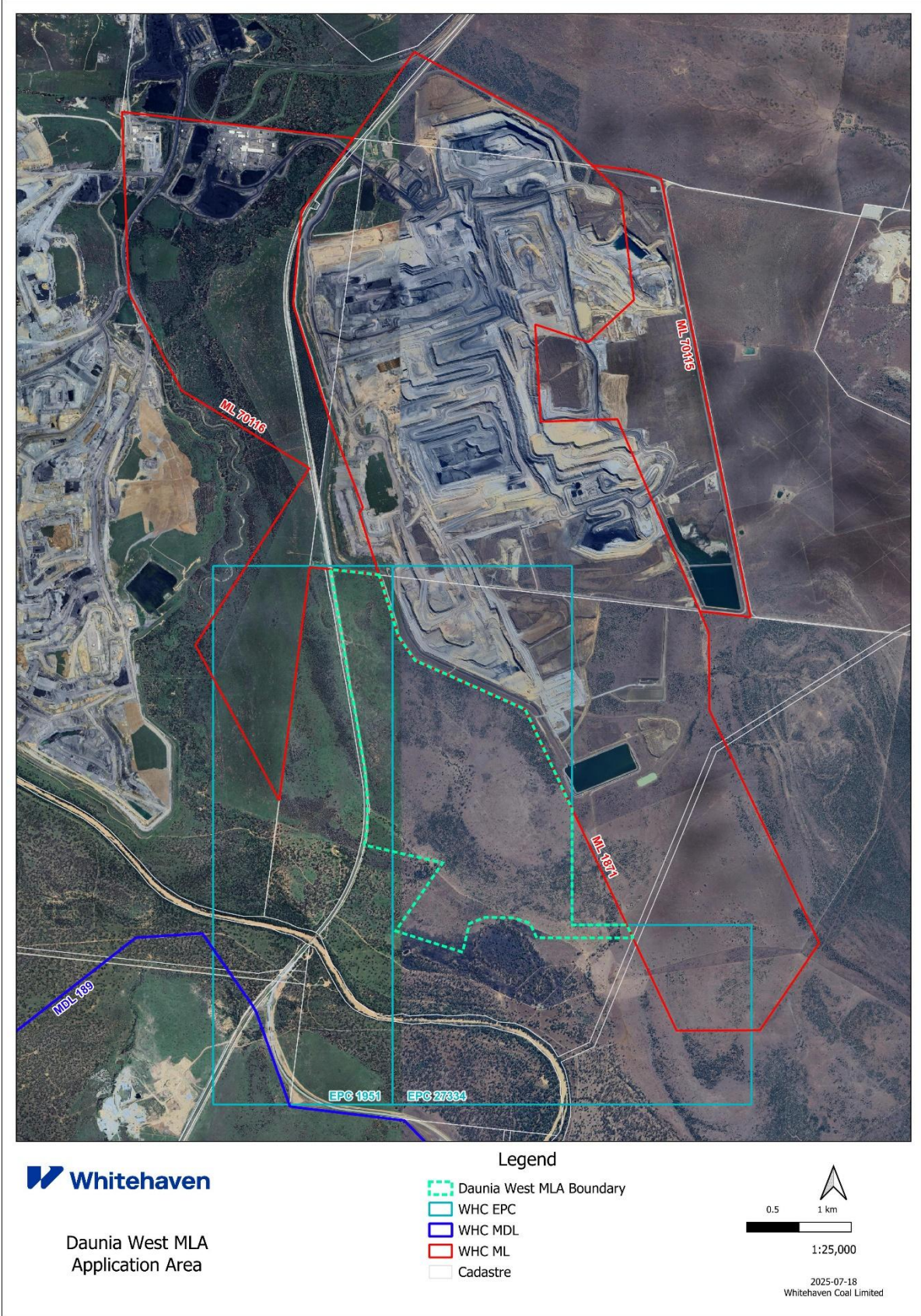
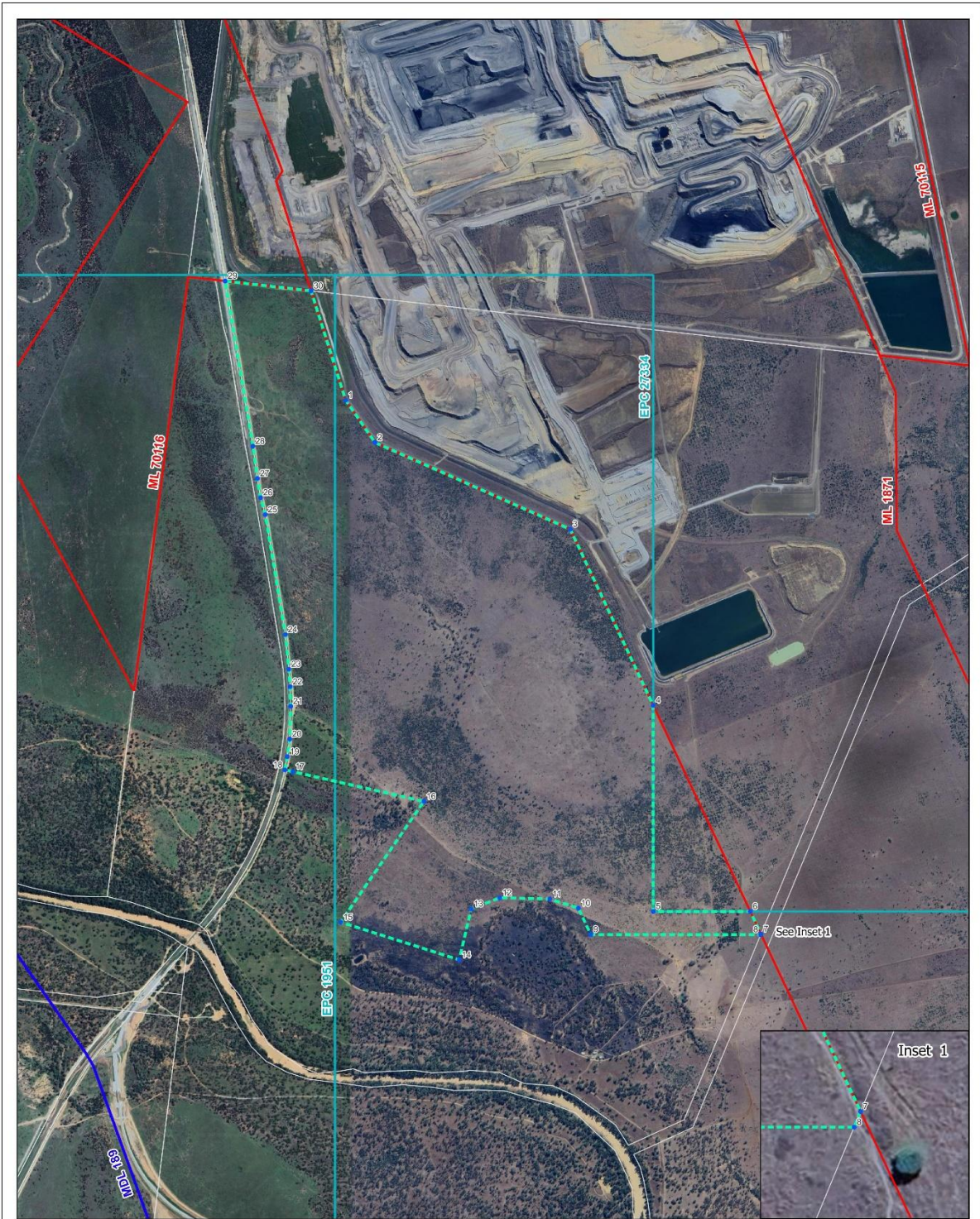


# Maps and Coordinates

## Daunia West

### Mining Lease Application





Daunia West MLA  
Application Area

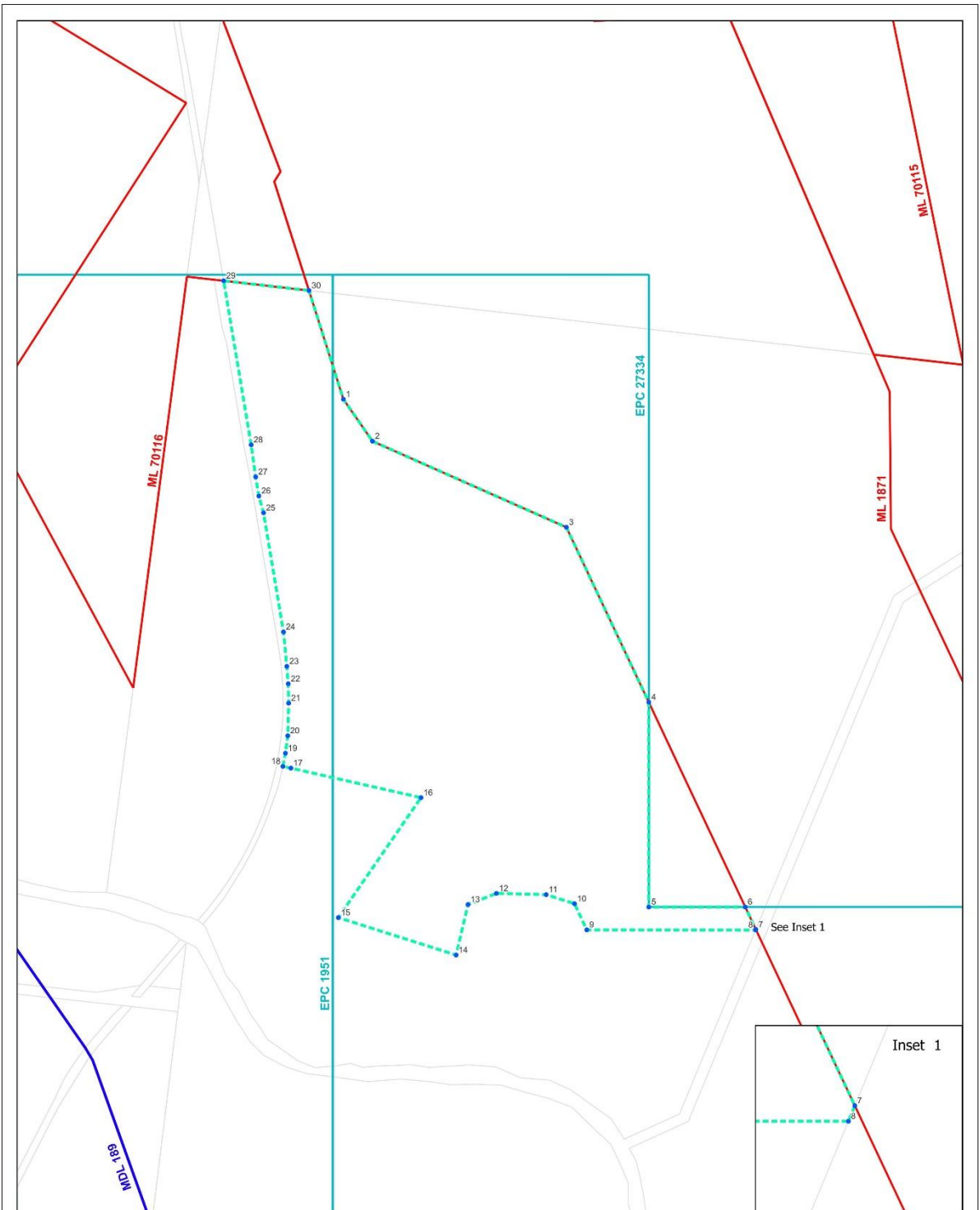
Legend

- Daunia West MLA Boundary
- Daunia West MLA Coords
- WHC EPC
- WHC MDL
- WHC ML
- Cadastre



1:15,000

2025-07-18  
Whitehaven Coal Limited



Daunia West MLA  
Application Area

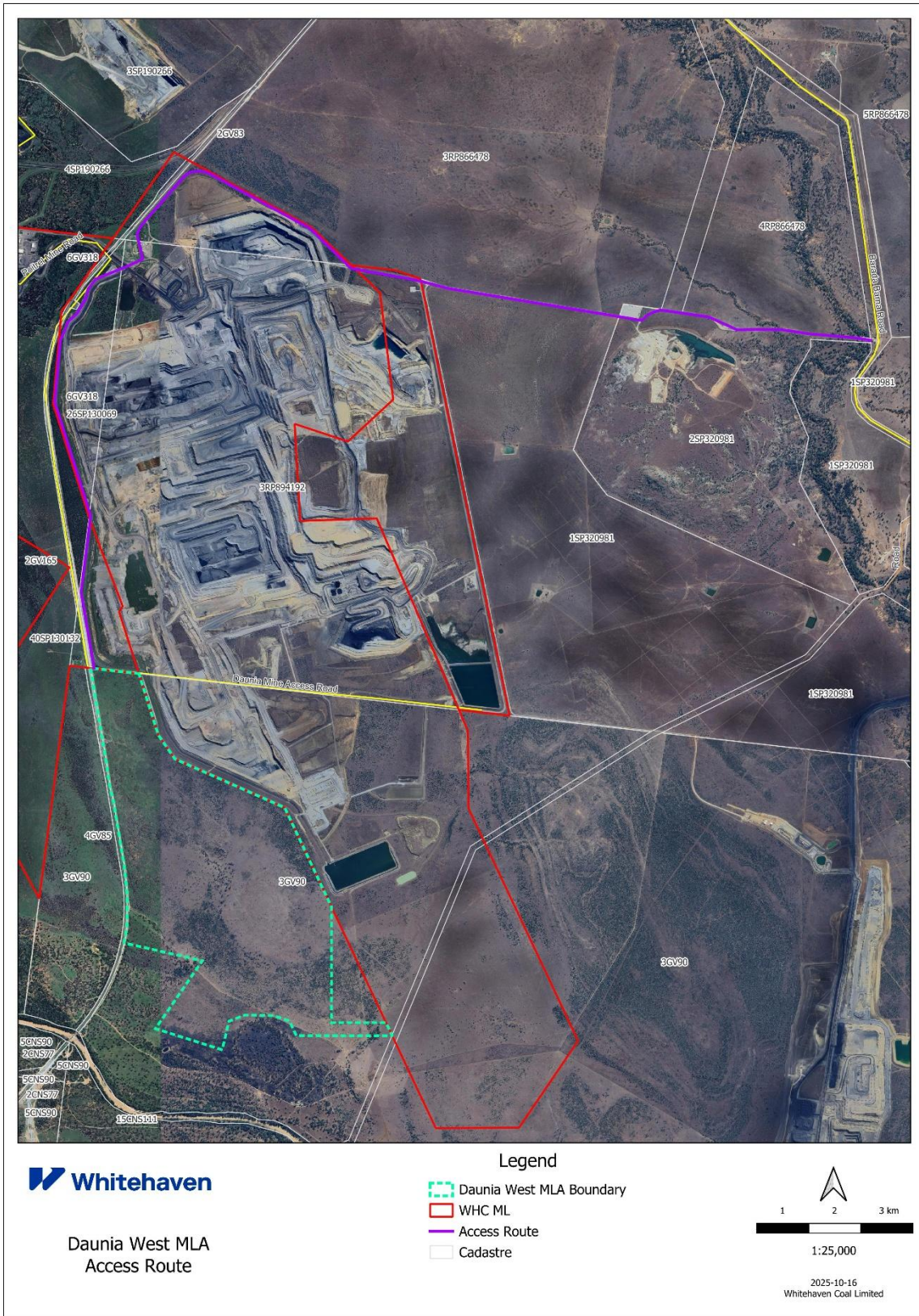
Legend

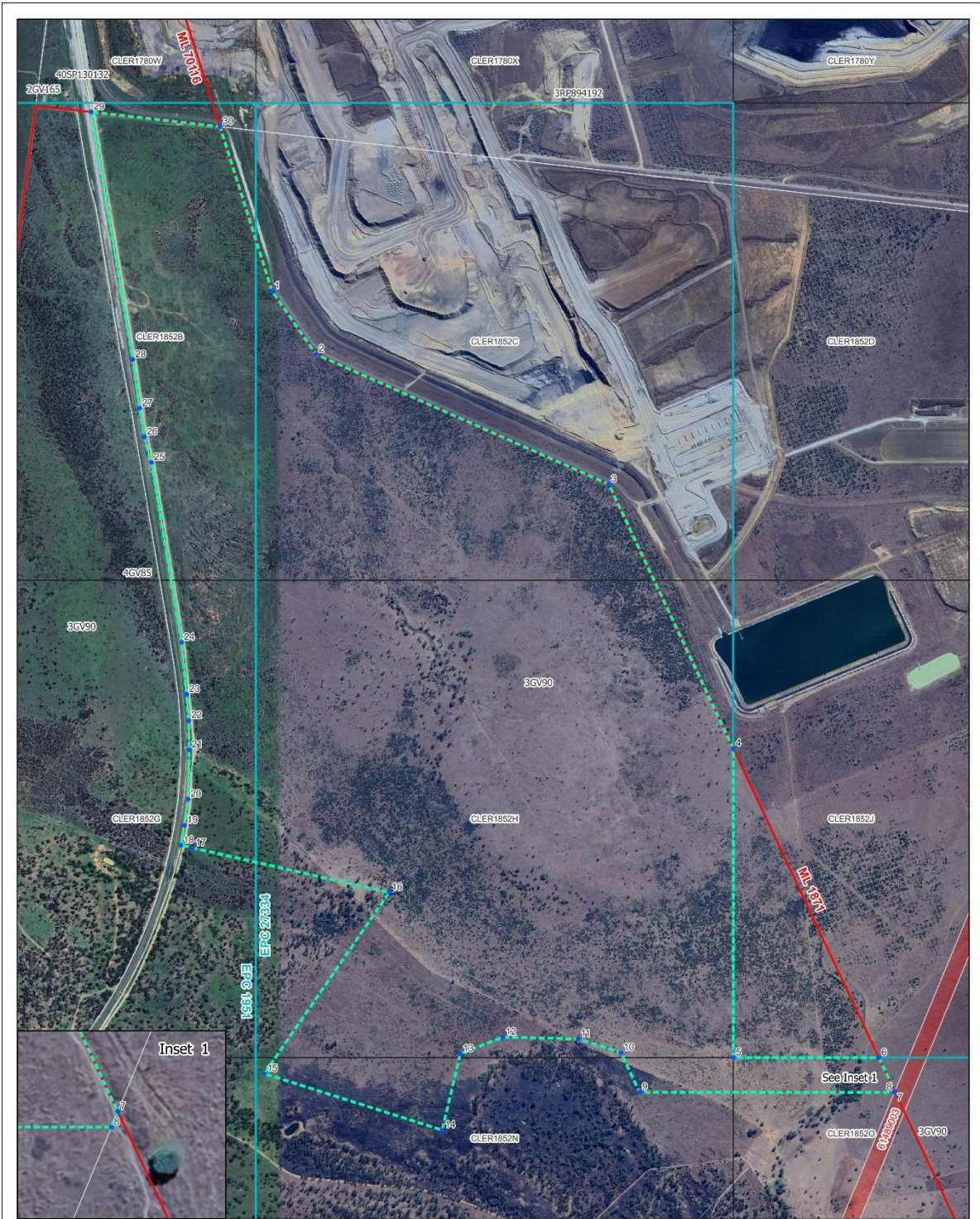
- Daunia West MLA Boundary
- Daunia West MLA Coords
- WHC EPC
- WHC MDL
- WHC ML
- Cadastre



1:15,000

2025-07-18  
Whitehaven Coal Limited

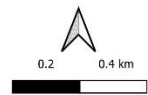




Daunia West MLA  
Application Area

Legend

- Daunia West MLA Boundary
- Daunia West MLA Coords
- WHC EPC
- WHC MDL
- WHC ML
- Cadastre



1:10,000

2025-07-18  
Whitehaven Coal Limited

**Mining Lease Application Area – Coordinates**

Corner	Easting	Northing	Description
1	632562.9	7556836	Being the point of commencement and a corner on the boundary of ML 1781 and then proceeding in a south-south easterly direction along the boundary of ML 1781 to Point 2.
2	632719.3	7556590	Being a corner on the boundary of ML 1781 and then proceeding in a south easterly direction along the boundary of ML 1781 to Point 3.
3	633769.8	7556078	Being a corner on the boundary of ML 1781 and then proceeding in a south-south easterly direction along the boundary of ML 1781 to Point 4.
4	634209.5	7555053	Being the point of intersection between the boundary of ML 1781, EPC 27334 and the eastern boundary of CLER1852J and then proceeding in a southerly direction along the eastern boundary of EPC 27334 to Point 5.
5	634199.3	7553858	Being a corner on EPC 27334 and the southwest corner of subblock CLER1852J and then proceeding in an easterly direction along the boundary of EPC 27334 to Point 6.
6	634723.9	7553854	Being the point of intersection between the boundary of ML 1781, EPC 27334 and the northern boundary of subblock CLER1852O and then proceeding in a south easterly direction along the boundary of ML 1781 to Point 7.
7	634780.3	7553722	Being the point of intersection between the boundary of ML 1781 and the boundary of road parcel SEGPARG61489003 and then proceeding in a south westerly direction along the boundary of road parcel SEGPARG61489003 to Point 8.
8	634778.9	7553719	Being a point on the boundary of road parcel SEGPARG61489003 and then proceeding in a westerly direction to Point 9.
9	633860.8	7553728	Being a point within lot 3GV90 and then proceeding in a north-north westerly direction to Point 10.
10	633795.1	7553881	Being a point within lot 3GV90 and then proceeding in a west-north westerly direction to Point 11.
11	633641.7	7553935	Being a point within lot 3GV90 and then proceeding in a westerly direction to Point 12.
12	633370.6	7553945	Being a point within lot 3GV90 and then proceeding in a west-south westerly direction to Point 13.
13	633216.1	7553881	Being a point within lot 3GV90 and then proceeding in a south-south westerly direction to Point 14.
14	633148.6	7553587	Being a point within lot 3GV90 and then proceeding in a west-north westerly direction to Point 15.
15	632509.9	7553811	Being a point within lot 3GV90 and then proceeding in a north easterly direction to Point 16.
16	632965.5	7554507	Being a point within lot 3GV90 and then proceeding in a west-north westerly direction to Point 17.
17	632259.2	7554685	Being a point within lot 3GV90 and then proceeding in a west-north westerly direction to Point 18.
18	632216	7554696	Being a point on the shared boundary of lot 3GV90 and lot 4GV85 and then proceeding in a northerly direction along the shared boundary of lot 3GV90 and lot 4GV85 to Point 19.
19	632230.3	7554773	Being a corner on the shared boundary of lot 3GV90 and lot 4GV85 and then proceeding in a northerly direction along the shared boundary of lot 3GV90 and lot 4GV85 to Point 20.
20	632243.9	7554874	Being a corner on the shared boundary of lot 3GV90 and lot 4GV85 and then proceeding in a northerly direction along the shared boundary of lot 3GV90 and lot 4GV85 to Point 21.

<b>21</b>	632250.2	7555065	Being a corner on the shared boundary of lot 3GV90 and lot 4GV85 and then proceeding in a northerly direction along the shared boundary of lot 3GV90 and lot 4GV85 to Point 22.
<b>22</b>	632249	7555178	Being a corner on the shared boundary of lot 3GV90 and lot 4GV85 and then proceeding in a northerly direction along the shared boundary of lot 3GV90 and lot 4GV85 to Point 23.
<b>23</b>	632242.2	7555280	Being a corner on the shared boundary of lot 3GV90 and lot 4GV85 and then proceeding in a northerly direction along the shared boundary of lot 3GV90 and lot 4GV85 to Point 24.
<b>24</b>	632225.6	7555480	Being a corner on the shared boundary of lot 3GV90 and lot 4GV85 and then proceeding in a northerly direction along the shared boundary of lot 3GV90 and lot 4GV85 to Point 25.
<b>25</b>	632123	7556177	Being a corner on the shared boundary of lot 3GV90 and lot 4GV85 and then proceeding in a northerly direction along the shared boundary of lot 3GV90 and lot 4GV85 to Point 26.
<b>26</b>	632098.3	7556275	Being a corner on the shared boundary of lot 3GV90 and lot 4GV85 and then proceeding in a northerly direction along the shared boundary of lot 3GV90 and lot 4GV85 to Point 27.
<b>27</b>	632081.9	7556387	Being a corner on the shared boundary of lot 3GV90 and lot 4GV85 and then proceeding in a northerly direction along the shared boundary of lot 3GV90 and lot 4GV85 to Point 28.
<b>28</b>	632059	7556574	Being a corner on the shared boundary of lot 3GV90 and lot 4GV85 and then proceeding in a northerly direction along the shared boundary of lot 3GV90 and lot 4GV85 to Point 29.
<b>29</b>	631917.5	7557533	Being the point of intersection between the shared boundary of lot 3GV90 and lot 4GV85 and the boundary of ML 70116 and then proceeding in an east-south easterly direction to Point 30.
<b>30</b>	632381	7557472	Being a corner on the shared boundary of ML 70116 and ML 1781 and then proceeding in a south-south easterly direction to Point 1.

**Access – Coordinates**

<b>Corner</b>	<b>Easting</b>	<b>Northing</b>
<b>1</b>	631952	7557532
<b>2</b>	631834	7558321
<b>3</b>	631932	7559103
<b>4</b>	631598	7560277
<b>5</b>	631656	7560911
<b>6</b>	631735	7561111
<b>7</b>	631818	7561186
<b>8</b>	631905	7561345
<b>9</b>	631926	7561441
<b>10</b>	631999	7561543
<b>11</b>	632324	7561680
<b>12</b>	632455	7561746
<b>13</b>	632401	7562000
<b>14</b>	632426	7562063
<b>15</b>	632494	7562159
<b>16</b>	632527	7562195
<b>17</b>	632856	7562590
<b>18</b>	632894	7562622
<b>19</b>	632942	7562642
<b>20</b>	632991	7562647
<b>21</b>	633035	7562645
<b>22</b>	633081	7562632
<b>23</b>	633121	7562611
<b>24</b>	634065	7562046
<b>25</b>	634436	7561652
<b>26</b>	634458	7561632
<b>27</b>	635078	7561505
<b>28</b>	635238	7561463
<b>29</b>	635353	7561426
<b>30</b>	635428	7561410
<b>31</b>	637016	7561114
<b>32</b>	637242	7561071
<b>33</b>	637295	7561126
<b>34</b>	637356	7561158
<b>35</b>	637418	7561176
<b>36</b>	637462	7561172
<b>37</b>	637884	7561102
<b>38</b>	638156	7560968
<b>39</b>	638343	7560969
<b>40</b>	638577	7560965
<b>41</b>	638805	7560927
<b>42</b>	638865	7560918
<b>43</b>	639273	7560878
<b>44</b>	639408	7560854
<b>45</b>	639438	7560846