

Whitehaven Solar Farm Project

OCTOBER 2024

Whitehaven Coal has lodged a Development Application for a proposed solar photovoltaic electricity generation system (solar farm).

The Whitehaven Solar Farm Project (Project) would be located adjacent to the existing Narrabri Mine on Whitehaven land, approximately 25km south-east of Narrabri.

The Project will be considered under the NSW Government's State Significant Development Application process.

The Project would generate 26MW of electricity, helping the Narrabri Mine to reduce the electricity it consumes from the grid. A 10MWh battery energy storage system (BESS) is proposed as part of the project.

This behind-the-meter proposal would supply electricity directly to the Narrabri Mine via the existing electricity transmission line for the remainder of the mine's operational life.

The Project would create around 65 jobs during peak construction.

Initial studies indicate the proposed solar farm would provide approximately one-third of the Narrabri Mine's electricity.

Reducing operational emissions

As part of Whitehaven's commitment to reduce its operational greenhouse gas emissions, it has been purchasing carbon neutral electricity certified by Climate Active since October 2021 across all its mines, including the Narrabri Mine. This means the greenhouse gas emissions from the generation of electricity are offset by the electricity supplier through the purchase of carbon offsets.

Community and stakeholder engagement

Whitehaven conducted comprehensive engagement with the community and stakeholders throughout the application process.

This included engaging with neighbours, local community members, the local indigenous community, the Narrabri Mine Community Consultative Committee (CCC), Narrabri Shire Council and relevant government agencies as part of the Department of Planning Housing and Infrastructure (DPHI) requirements.

The Project Environmental Impact Statement (EIS) will be placed on public exhibition by DPHI in due course, which will provide further opportunities for questions and issues to be raised and addressed.

APPROVAL TIMELINE

Lodgement of Scoping Report

Environmental Impact Statement (EIS development)

Development Application, including the EIS, lodged with NSW Department of Planning Housing and Infrastructure (DPHI)

WE ARE
HERE

DPHI reviews the EIS and prepares for public exhibition

EIS placed on public exhibition for comment

Whitehaven responds to submissions

DPHI assess the EIS, submissions and Whitehaven responses

Determination from DPHI or Independent Planning Commission

Tender and construction phase

For more information about the Solar Farm, visit:
whitehavencoal.com.au/solar-farm or scan the QR code



Key benefits of the Whitehaven Solar Farm Project



Approximately
65
peak construction
jobs, predominantly
locally based.

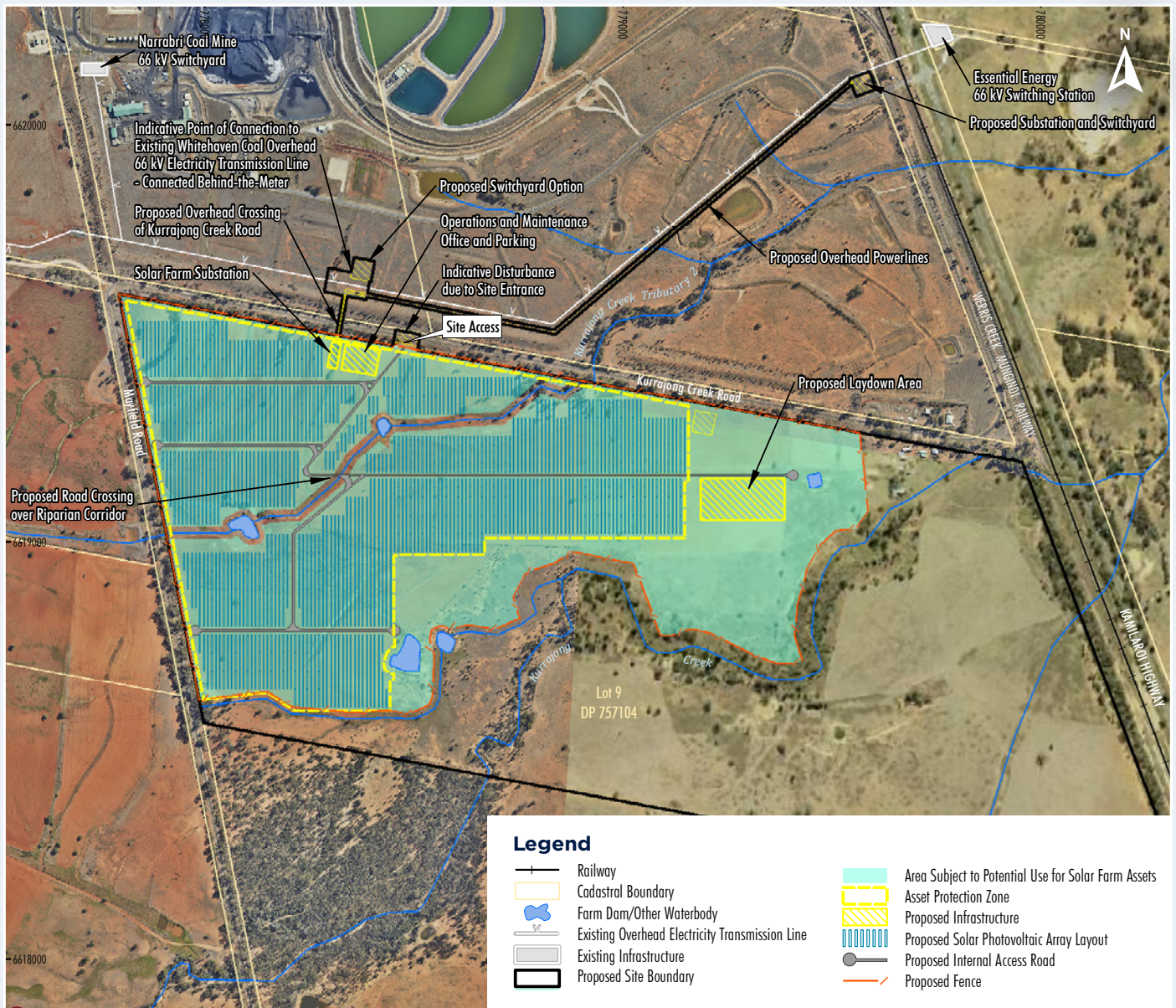


Generating
26MW
of electricity.



Generating more than
1/3
of the Narrabri Mine's
electricity from onsite
renewable energy.

Indicative Site Layout



The Whitehaven Solar Farm Project is located on the corner of Mayfield Rd and Kurrajong Creek Rd.

Contact Information

✉ WhitehavenSolarFarm@whitehavencoal.com.au
☎ 1800 WHAVEN (1800 942 836)

Scan the QR code for more
information about the
Whitehaven Solar Farm Project

