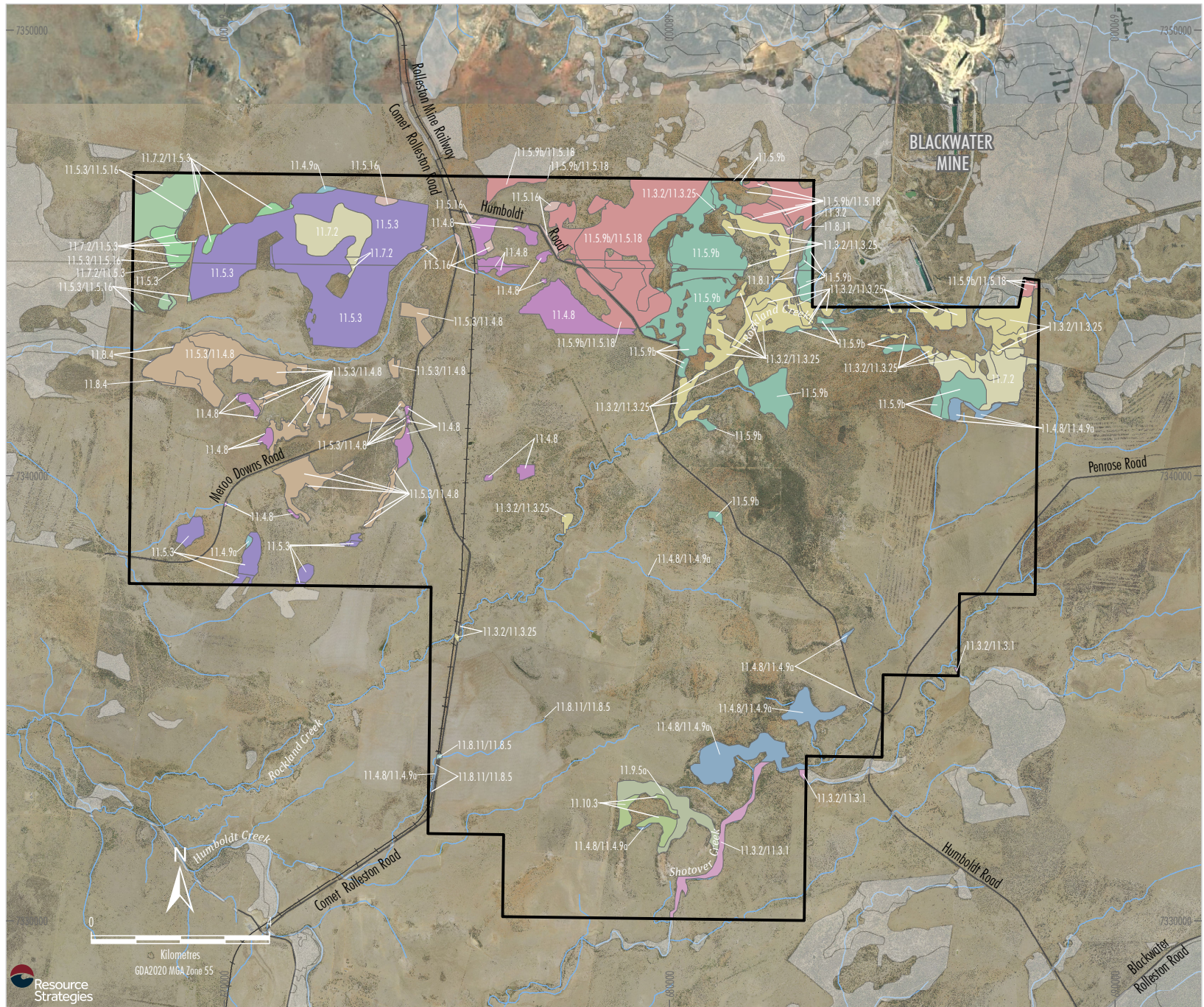


**DRAFT**



- LEGEND**
- EPBC Action Area
  - Railway
  - Road
  - Watercourse / Water Feature (VM Act)
  - Regional Ecosystem Outside of EPBC Action Area
- Regional Ecosystem**
- 11.3.1 *Acacia harpophylla* and/or *Casuarina cristata* open forest on alluvial plains.
  - 11.3.2 *Eucalyptus populnea* woodland on alluvial plains.
  - 11.3.25 *Eucalyptus tereticornis* or *E. camaldulensis* woodland fringing drainage lines.
  - 11.4.8 *Eucalyptus cambageana* woodland to open forest with *Acacia harpophylla* or *A. argyrodendron* on Cainozoic clay plains.
  - 11.4.9a *Acacia harpophylla*, *Lysiphyllum carronii* +/- *Casuarina cristata* open forest to woodland.
  - 11.5.3 *Eucalyptus populnea* +/- *E. melanophloia* +/- *Corymbia clarksoniana* woodland on Cainozoic sand plains and/or remnant surfaces.
  - 11.5.9b *Eucalyptus crebra*, *E. tenuipes*, *Lysicarpus angustifolius* +/- *Corymbia* spp. woodland.
  - 11.5.16 *Acacia harpophylla* and/or *Casuarina cristata* open forest in depressions on Cainozoic sand plains and remnant surfaces.
  - 11.5.18 *Micromyrtus capricornia* open shrubland on Cainozoic sand plains and/or remnant surfaces.
  - 11.7.2 *Acacia* spp. woodland on Cainozoic lateritic duricrust. Scarp retreat zone.
  - 11.8.4 *Eucalyptus melanophloia* woodland to open woodland on Cainozoic igneous rocks.
  - 11.8.5 *Eucalyptus argadophila* open woodland on Cainozoic igneous rocks.
  - 11.8.11 *Dichanthium sericeum* grassland on Cainozoic igneous rocks.
  - 11.9.5a *Acacia harpophylla* and/or *Casuarina cristata* open forest to woodland on fine-grained sedimentary rocks.
  - 11.10.3 *Acacia shirleyi* or *A. catenulata* open forest on coarse-grained sedimentary rocks. Crests and scarps.

Source: State of Queensland (2021); BMA (2021)  
 Ortho: BMA (2015); Google Earth (2021)



**BHP Mitsubishi Alliance**  
 BLACKWATER SOUTH COKING COAL PROJECT  
 Regional Ecosystem Mapping

**Figure 3**

BHP-21-30\_BVNS\_EPBC\_Ref\_2024