

# Blackwater Mine

## Blackwater North Extension

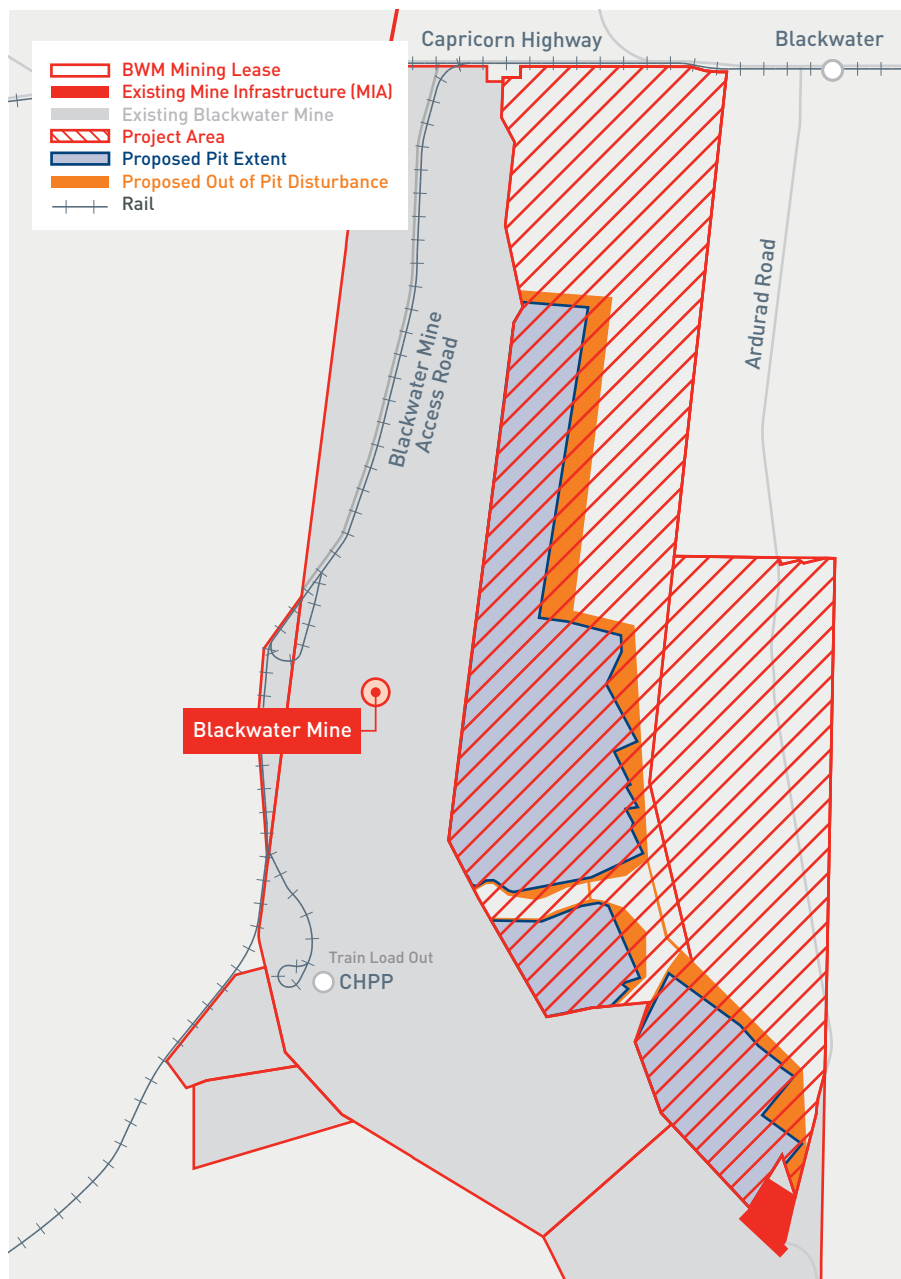


BHP Mitsubishi Alliance

The BHP Mitsubishi Alliance (BMA) Blackwater North Extension project is located within the mining lease boundaries of Blackwater Mine, located approximately 20 kilometres south of Blackwater, Central Queensland.

BMA is proposing to extend its operation at the northern end of its Blackwater Mine, within BMA's existing mining lease to allow for life of mine extension so that production will be sustained.

By accessing additional resources at Blackwater Mine we are ultimately contributing to the long term viability and sustainability of the operation—continuing to deliver local jobs and investment for the regional supply chain and broader community. The area in which additional approvals are being sought is shown in the figure below.



### Project key information

#### Project location

Blackwater North is located within the Blackwater Mine Mining Lease, east of the existing pits.



#### Sustaining our operations

This project is about sustaining the existing workforce and production levels.

### Project milestones



**1 Dec 2023**

Lodge Commonwealth Application with the Department of Climate Change, Energy, Environment and Water (DCCEEW).



**Mid Dec 2023**

Lodge State Application with the Queensland Department of Environment & Science (DES)



**2025**

Decision by DES and DCCEEW in relation to the State and Commonwealth Approvals following assessment and completion of any required public notification processes.

# Blackwater Mine

## Blackwater North Extension



BHP Mitsubishi Alliance

### BMA operations



### About Blackwater Mine

BMA's Blackwater Mine is owned and operated by BHP Mitsubishi Alliance (BMA), a 50:50 joint venture between BHP and Mitsubishi Development Pty.

Blackwater Mine was first opened in 1967. It's one of the longest coal mines in the Southern Hemisphere with a strike length of 80 kilometres. In 50 years, the operation has produced approximately 450 million tonnes of coal. The mine currently rails all coal through The Port of Gladstone.

### Divestment Review outcome—Blackwater

In October 2023 BHP announced that BHP and Mitsubishi Development have agreed to divest the Blackwater and Daunia Mines to Whitehaven Coal.

Whitehaven will assume operating control of the Daunia and Blackwater mines on completion of the sale, which is expected to occur in Q4 FY24. The extension application provides confidence to the new owners that environmental approvals for the continuation of BWM are in place, facilitating the most efficient and productive development of the mine. The divestment parties are fully aware of the applications and are supportive of its progression.

### About BMA

BHP Mitsubishi Alliance (BMA) is a leading producer of low-cost, high quality, premium hard coking coal.

BMA owns seven Bowen Basin mines—Goonyella Riverside, Broadmeadow, Caval Ridge, Daunia, Peak Downs, Saraji and Blackwater. BMA also operates the Hay Point Coal Terminal near Mackay. The mines are located in the coal-rich Bowen Basin of Central Queensland, which covers an area of 75,000 square kilometres.

With the exception of BMA's Broadmeadow underground longwall operation, all of the mines are open-cut, using dragline and truck/shovel fleets for overburden removal.



For more information on the Blackwater North Extension project as it becomes available visit

[bhp.com/sustainability/environment/regulatory-information](https://bhp.com/sustainability/environment/regulatory-information)

BHP/BMA Community hotline: 1800 078 797