

# Whitehaven Solar Farm Project

SEPTEMBER 2023

## Whitehaven Coal is currently preparing a Development Application for a proposed solar photovoltaic electricity generation system (solar farm).

The Whitehaven Solar Farm Project (Project) would be located adjacent to the existing Narrabri Mine on Whitehaven land, approximately 25km south-east of Narrabri.

The Project would generate 26MW of electricity, helping the Narrabri Mine to reduce the electricity it consumes from the grid.

The Project will not connect to the grid. It is a behind-the-meter proposal to supply electricity directly to the Narrabri Mine via the existing electricity transmission line for the remainder of the mine's operational life.

The Project would create around 65 jobs during peak construction.

Initial studies indicate the proposed solar farm would provide more than one-third of the Narrabri Mine's electricity and require a capital investment of approximately \$43 million.

## Reducing operational emissions

As part of Whitehaven's commitment to reduce its operational greenhouse gas emissions, it has been purchasing carbon neutral electricity certified by Climate Active since October 2021 across all of its mines, including Narrabri. This means the greenhouse gas emissions from the generation of electricity are offset by the electricity supplier through the purchase of carbon offsets.

The Project will allow the carbon neutral electricity previously consumed by the Narrabri Mine to be dispatched elsewhere in the grid.

## Community and stakeholder engagement

The Project will be considered under the NSW Government's State Significant Development Application process.

Whitehaven is committed to ongoing, comprehensive engagement with the community and stakeholders throughout the process. This includes neighbours, local community members and the Aboriginal community, the Narrabri Mine Community Consultative Committee (CCC), Narrabri Shire Council and relevant government agencies as part of the Department of Planning and Environment's (DPE) requirements.

The Project Environmental Impact Statement (EIS) will be placed on public exhibition by the DPE in due course, which will provide further opportunities for questions and issues to be raised and addressed.

### APPROVAL TIMELINE

Lodgement of Scoping Report

WE ARE  
HERE

Environmental Impact Statement (EIS development)

Development Application, including the EIS, lodged with NSW Department of Planning and Environment (DPE)

DPE reviews the EIS and prepares for public exhibition

EIS placed on public exhibition for comment

Whitehaven responds to submissions

DPE assess the EIS, submissions and Whitehaven responses

Determination from the Department of Planning and Environment or Independent Planning Commission

Tender and construction phase

For more information about the Solar Farm, visit: [whitehavencoal.com.au/solar-farm](http://whitehavencoal.com.au/solar-farm) or scan the QR code



# Key benefits of the Whitehaven Solar Farm Project



Approximately

**65**

peak construction jobs, predominantly locally based.



Generating

**26MW**

of electricity.



Generating more than

**1/3**

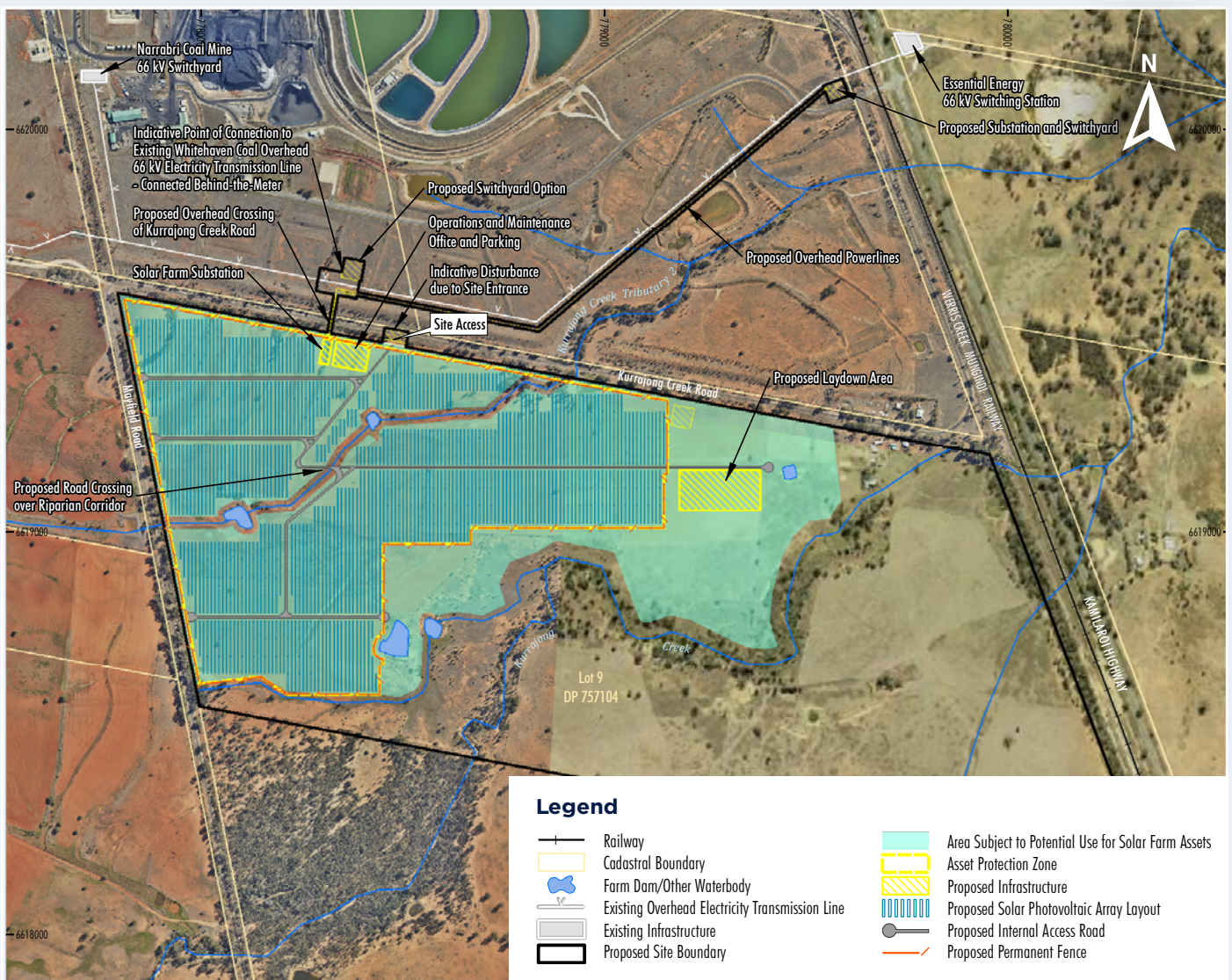
of the Narrabri Mine's electricity from onsite renewable energy.



Approximate cost of project

**\$43m**

## Indicative Site Layout



The Whitehaven Solar Farm Project is located on the corner of Mayfield Rd and Kurrajong Creek Rd.

## Contact Information

✉ [WhitehavenSolarFarm@whitehavencoal.com.au](mailto:WhitehavenSolarFarm@whitehavencoal.com.au)

☎ 1800 WHAVEN (1800 942 836)

Scan the QR code for more information about the Whitehaven Solar Farm Project

