

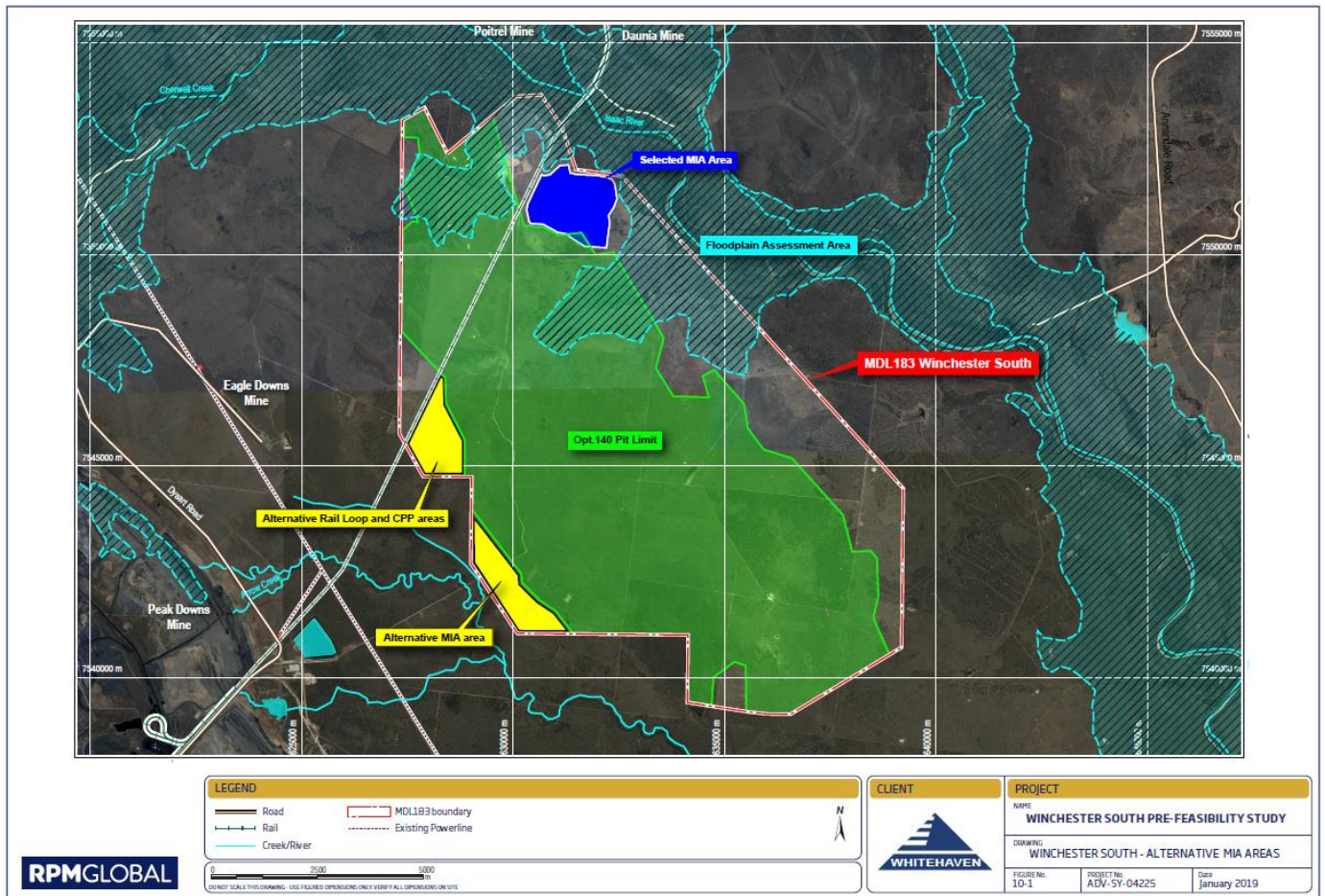
13 June 2019

Mining and Petroleum Operations
 Department of Natural Resources and Mines
 Building E, 25 Yepoon Road, Parkhurst QLD 4702

RE: Whitehaven WS Pty Ltd (ACN 625 165 004) – Winchester South Mining Lease Applications - Statement Justifying the Area of the Permit and its Shape and the required Surface Area

The tenement underlying the Winchester South Mining Lease Applications (MDL 183) is relatively confined to support a substantial open cut coal mine operation targeting the full extent of the economic resource within MDL 183. As a result, the Winchester South Mining Lease Applications seek to utilise the entire area of MDL 183, including surface rights.

RPM Advisory Services Pty Ltd (RPM) in 2019 has been engaged to complete conceptual mine planning and design. This work includes a proposed project layout for the Winchester South Project, the proposed project layout ensures that the significant coal resource is developed in the most the efficient way, whilst also taking into consideration various site constraints. The proposed project layout is extracted below.



The area shaded in green in the site layout represents the bit configuration based on optimal coal economics (including out of pit waste rock dumps). The area in blue is the selected mine infrastructure area, with two alternative mine infrastructure areas shown in yellow. As negotiations with key infrastructure providers (including rail water and power) have not yet concluded, it is essential to retain both of these areas as options, should they become necessary. The area to the north east of the pit layout is retained as an environmental monitoring and buffer zone, to ensure in particular that surface water quality is appropriate as it leaves the site and enters the Isaac River catchment.

As a result, there are no areas that can reasonably be removed either from the Winchester South Mining Lease Applications or the surface area requirements identified for them.

The only exception to this outcome is that surface area has been sought for the full extent of the rail corridor. Once negotiations with the rail service provider are complete, it is anticipated that this will be reduced to, for example, a 100m wide crossing, likely in the form of an overpass.

As shown by the attached proposed project layout, all of the surface area within the Mining Lease Application areas is required for the following purposes:

- Open Cut Pits;
- Waste Rock Emplacements;
- Coal Product Stockpile;
- Coal Handling Preparation Plant;
- Internal Haul and Light Vehicle Roads;
- Flood Levees;
- Rail Loop and Load Out;
- Mine Infrastructure Area;
- Mining Administration Offices;
- Maintenance Workshops;
- Water Management Structures;
- Water pipeline;
- Electricity Transmission Line; and
- Environmental Monitoring locations (i.e. groundwater monitoring bores)

RPM reviewed three development scenarios. At 5Mtpa, the mine would support a 300 people strong workforce, ramping up to 540 people at 10Mtpa and 680 people at 15Mtpa. The general site layout is common for all development scenarios, with only minor variations due to increased throughput.

Yours Sincerely,



Todd Harrington

Project Director, Whitehaven Coal Limited