

TARRAWONGA COAL MINE – MONTHLY MONITORING SUMMARY

Site Information

EPL No: 12365

EPA Website Link: <http://www.epa.nsw.gov.au/prpoeoapp/ViewPOEOLicence.aspx?DOCID=55113&SYSUID=1&LICID=12365>

Licensee: Tarrawonga Coal Pty Ltd

Licensee Address: Tarrawonga Coal Mine, 469 Goonbri Road, BOGGABRI NSW 2382

EPL Monitoring Points: See Figure 1 and 2 below

Sampling Period: April 2019

Obtained Date: 04/05/2019

Publication Date: 06/05/2019

Table 1 - No Pollutant Limits Apply

EPL ID	Pollutant	Units of Measure	Monitoring Frequency	No. of Samples for the Month	Date Sampled	Date Obtained	Min Value	Mean Value	Median Value	Max or Only Value	Comments
5	TSS	mg/L	Upon discharge	0	-	-	-	-	-	-	-
	Conductivity	ms/cm		0	-	-	-	-	-	-	-
	Oil & Grease	mg/L		0	-	-	-	-	-	-	-
	pH	pH		0	-	-	-	-	-	-	-
6	TSS	mg/L	Upon discharge	0	-	-	-	-	-	-	-
	Conductivity	ms/cm		0	-	-	-	-	-	-	-
	Oil & Grease	mg/L		0	-	-	-	-	-	-	-
	pH	pH		0	-	-	-	-	-	-	-
7	TSS	mg/L	Upon discharge	0	-	-	-	-	-	-	-
	Conductivity	ms/cm		0	-	-	-	-	-	-	-
	Oil & Grease	mg/L		0	-	-	-	-	-	-	-
	pH	pH		0	-	-	-	-	-	-	-
8	TSS	mg/L	Upon discharge	0	-	-	-	-	-	-	-
	Conductivity	ms/cm		0	-	-	-	-	-	-	-
	Oil & Grease	mg/L		0	-	-	-	-	-	-	-
	pH	pH		0	-	-	-	-	-	-	-

Table 2 - Pollutant Limits Apply

EPL ID	Pollutant	Units of Measure	Monitoring & Frequency	No. of Samples for the Month	Date Sampled	Date Obtained	Min Value	Max or Only Value	100%ile Limit	Exceedance (Yes/No)	Comments
1	TSS	mg/L	Upon discharge	0	-	-	-	-	-	-	-
	Oil & Grease	mg/L		0	-	-	-	-	-	-	-
	pH	pH		0	-	-	-	-	-	-	-
2	TSS	mg/L	Upon discharge	0	-	-	-	-	-	-	-
	Oil & Grease	mg/L		0	-	-	-	-	-	-	-
	pH	pH		0	-	-	-	-	-	-	-
3	TSS	mg/L	Upon discharge	0	-	-	-	-	-	-	-
	Oil & Grease	mg/L		0	-	-	-	-	-	-	-
	pH	pH		0	-	-	-	-	-	-	-
24	TSS	mg/L	Upon discharge	0	-	-	-	-	-	-	-
	Oil & Grease	mg/L		0	-	-	-	-	-	-	-
	pH	pH		0	-	-	-	-	-	-	-
25	TSS	mg/L	Upon discharge	0	-	-	-	-	-	-	-
	Oil & Grease	mg/L		0	-	-	-	-	-	-	-
	pH	pH		0	-	-	-	-	-	-	-
26	TSS	mg/L	Upon discharge	0	-	-	-	-	-	-	-
	Oil & Grease	mg/L		0	-	-	-	-	-	-	-
	pH	pH		0	-	-	-	-	-	-	-
27	TSS	mg/L	Upon discharge	0	-	-	-	-	-	-	-
	Oil & Grease	mg/L		0	-	-	-	-	-	-	-
	pH	pH		0	-	-	-	-	-	-	-

Table 3 – Monitoring (Quarterly & 6 Monthly – No Limits apply)

EPL ID	Pollutant	Units of Measure	Monitoring Frequency	No. of Samples for the Period	Date Sampled	Date Obtained	Min Value	Mean Value	Median Value	Max or Only Value
9	Conductivity	µS/cm*	6 monthly – (Mar- Sep)	0	-	-	-	-	-	-
	Lead	mg/L		0	-	-	-	-	-	-
	pH	pH		0	-	-	-	-	-	-
	Standing Water Level	metres		0	-	-	-	-	-	-
10	Conductivity	µS/cm*	6 monthly – (Mar- Sep)	0	-	-	-	-	-	-
	Lead	mg/L		0	-	-	-	-	-	-
	pH	pH		0	-	-	-	-	-	-
	Standing Water Level	metres		0	-	-	-	-	-	-
11	Conductivity	µS/cm*	6 monthly – (Jun- Dec)	0	-	-	-	-	-	-
	Lead	mg/L		0	-	-	-	-	-	-
	pH	pH		0	-	-	-	-	-	-
	Standing Water Level	metres		0	-	-	-	-	-	-
12	Conductivity	µS/cm*	6 monthly – (Mar- Sep)	0	-	-	-	-	-	-
	Lead	mg/L		0	-	-	-	-	-	-
	pH	pH		0	-	-	-	-	-	-
	Standing Water Level	metres		0	-	-	-	-	-	-
13	Conductivity	µS/cm*	Quarterly - (Feb, May, Aug, Nov)	0	-	-	-	-	-	-
	Oil & Grease	mg/L		0	-	-	-	-	-	-
	pH	pH		0	-	-	-	-	-	-
	TSS	mg/L		0	-	-	-	-	-	-

*Note: From April 2012 to February 2019, Electrical Conductivity was reported with the incorrect unit of measure (mS/cm).

Table 4 – Quarterly Monitoring (Noise – Limits Apply)-

(Next Quarterly noise monitoring will be undertaken in May 2019)

Table 5 – Monthly Monitoring (Blasts – Limits Apply)

Location	Parameter	Units of Measure	Frequency	No. of Blasts for the Month	Average Value	Max Value	100%ile Limit	(Potential) Non-compliance /breach	Date Obtained
Tarrawonga* (TB1)	Blast Noise	dB (Lin Peak)	Every Blast	4	91.1	94.5	N/A	N/A	18/04/2019
	Blast Vibration	mm/s	Every Blast	4	0.17	0.2	N/A	N/A	04/04/2019
Coomalgah	Blast Noise	dB (Lin Peak)	Every Blast	4	94.9	101.3	120	Nil	18/04/2019
	Blast Vibration	mm/s	Every Blast	4	0.18	0.31	10	Nil	04/04/2019

**Mine owned property – no limit apply*

Table 6- Monthly Monitoring (Dust PM10 – No Limits apply)

Location	No. of samples required by licence	Lowest sample value	Mean of sample	Highest sample value
“Flixton” property* TEOM 24 hr average ($\mu\text{g}/\text{m}^3$)	Continuous	0.0	26.6	77.6

**Mine owned property – no limit apply*

Figure 1 – EPL 12365 Onsite Monitoring Locations

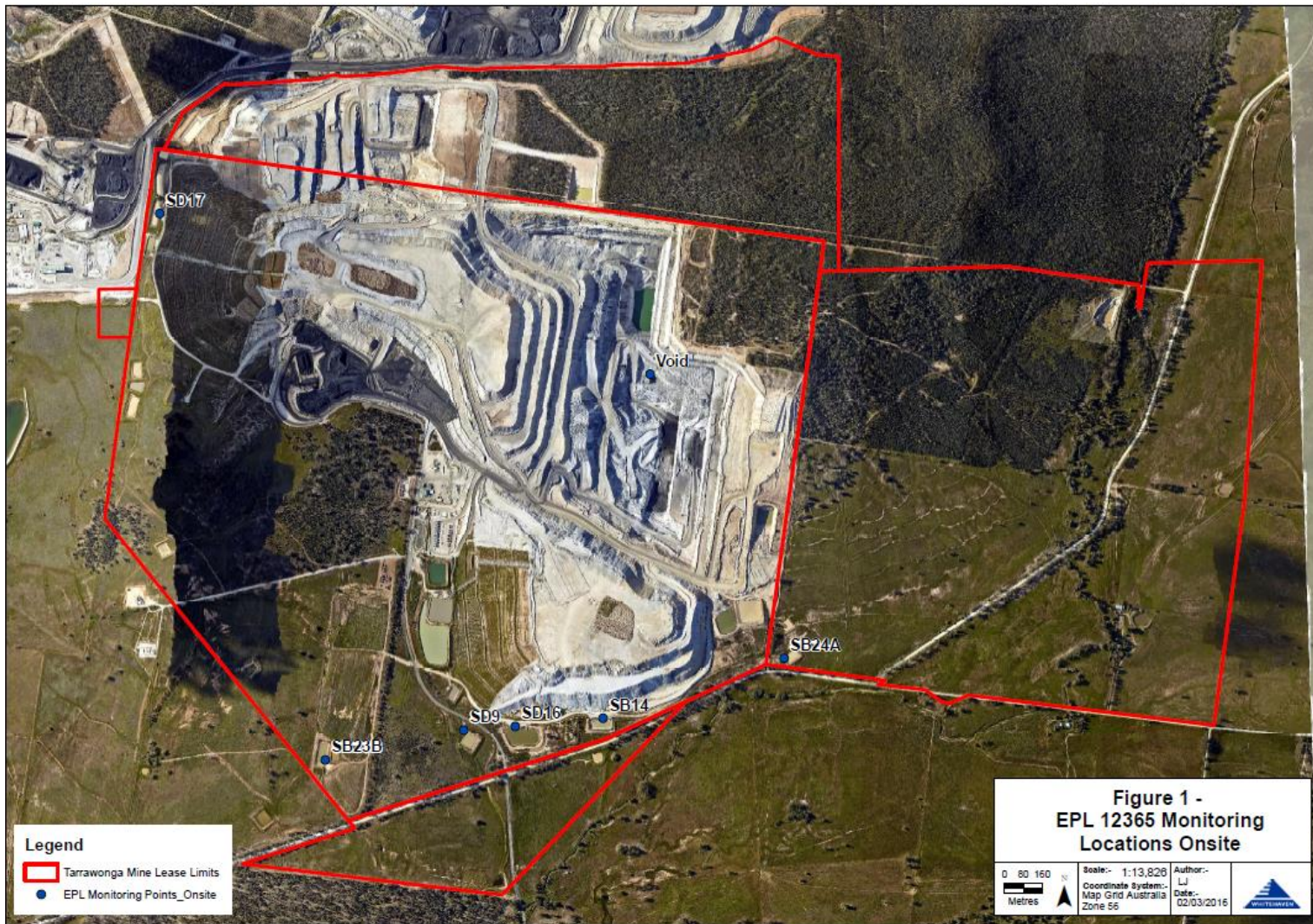


Figure 2 – EPL 12365 Offsite Monitoring Locations

