

NARRABRI UNDERGROUND MINE EXTENSION PROJECT

SEPTEMBER 2019

Whitehaven Coal's Narrabri Underground Mine is located approximately 30km south-east of Narrabri, and 10km north-west of Baan Baa.

The mine has been operating since 2012 and employs around 250 people who live locally. As one of the most productive underground mines in Australia, Narrabri is approved to produce 11 million tonnes per annum of high quality thermal coal until 2031.







About Whitehaven Coal

Whitehaven Coal is proud to be the leading Australian producer of high-quality coal, and the dominant player in Australia's only emerging high-quality coal basin. We help power developed and emerging economies in Asia where there is strong and growing demand for our product.

We operate six mines in the Gunnedah Basin in North West NSW and have a reputation for excellence in project delivery and safe, efficient and environmentally responsible operation.

We're proudly local, and around 75% of our 2,400-strong workforce live in the communities around our mine sites. We believe in helping communities grow, ensuring benefits flowing from our operations accrue locally.

Fast facts

-  Maintain hundreds of local jobs
-  Support local families and businesses for years to come
-  Millions in NSW government royalties to fund schools and hospitals
-  No new pit top
-  No new coal preparation plant
-  No new rail loop
-  No new access points

About the Narrabri Underground Mine Extension Project

The Extension Project is a proposal to extract coal to the south of the current mine within the existing Exploration Licence area, and via the established surface infrastructure, using the existing coal handling preparation plant, rail loop, box cut and offices. No new coal processing facilities will be constructed to the south of the existing operation.

Under the proposal, Whitehaven will continue extracting coal via the underground longwall mining method already being successfully used at the mine. The extension involves continuing the existing southern longwall blocks into the adjacent Narrabri South Exploration Licence, owned by Whitehaven Coal. This will extend the approved life of the mine from 2031 to 2045, providing continued employment for hundreds of people in the region.

The extension of the longwall blocks will enable the mine to produce continually for 12 months without the need for a longwall change out to occur, which is when the longwall finishes mining an area and is relocated to a new area. This relocation typically takes up to six weeks, halting production.

We are also applying for an extension of the existing services infrastructure into the southern area, and the construction of new ventilation shafts and fan sites.

Community engagement

It is our responsibility and commitment to ensure the project meets all required approvals, which includes ensuring our project and approach align with local community expectations. We do this through meaningful and transparent dialogue with stakeholders, and listening to any concerns and issues as they arise through interactions with landholders, community information drop-in sessions, online surveys and information mail outs. We will continue to work with a cross-section of groups and individuals, using a variety of tools and approaches, as the project progresses.

Next steps

The proposal must go through an extensive State and Federal Government approval process. We anticipate lodging an Environmental Impact Statement with the NSW Department of Planning, Industry & Environment in the coming year, which the community will be able to review and provide comment on.

COMPLETED

Gateway Certificate Application

Request for Secretary's Environmental Assessment Requirements (SEARs)

EPBC Act referral

WE ARE HERE

EIS studies and preparation of EIS

EIS lodged with DPI&E

Lodgement of State Significant Development Application with DPI&E

Lodgement of Mining Lease Application (MLA) with Resources & Geoscience

Assessment of EIS and submissions by DPI&E

Minister for Planning or IPC determines application

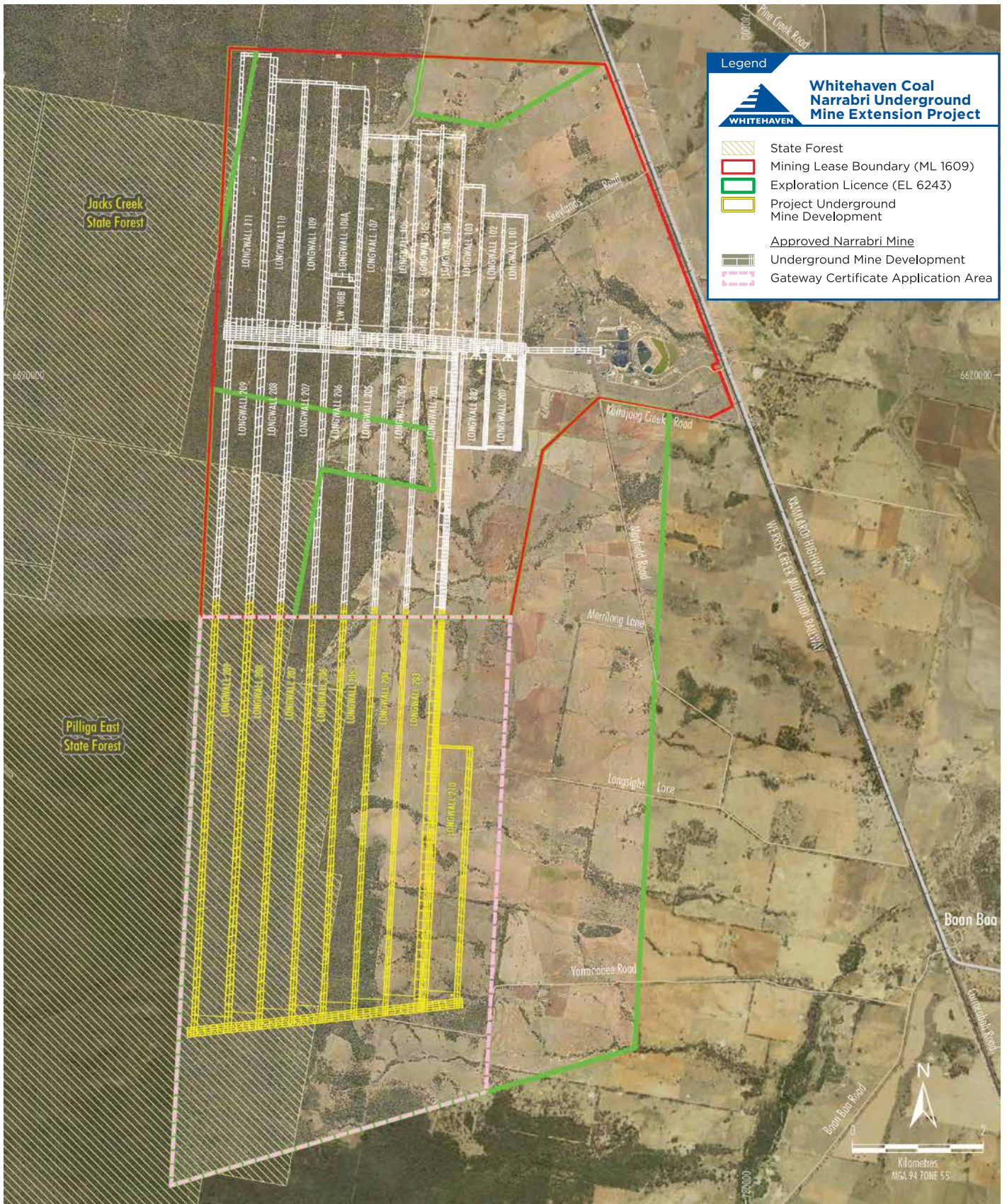
If approved, Grant of Development Approval with conditions

Minister for Resources grants a Mining Lease (ML)

Submission of Mining Operations Plan to Resources & Geoscience

Approvals and Licences obtained from other NSW Government agencies

For more information, contact the Project Director on 02 6794 4184 or visit whitehavencoal.com.au/narrabri-mine



Source: Orthophotos - Whitehaven Coal (2017); R.W. Corkery & Co Pty Ltd (2009); NSW Trade & Investment (2017); NCOPL (2019).