



Narrabri Stage 3 Extension Project:

Providing local jobs for decades to come

May 2021



The Narrabri underground coal mine has been operating since 2012 and employs around 500 people, most of whom live in the region. The mine is approved to extract coal at a rate of up to 11 million tonnes of run-of-mine coal per annum until 2031.

The Narrabri Stage 3 Extension Project is a proposal to extract coal to the south of the existing mine and within the existing exploration lease area. Coal will be mined using the underground longwall mining method already used successfully and safely, and using the established surface infrastructure, including the existing CHPP, rail loop, box cut and offices.

The extension will extend the life of the mine from 2031 to 2044, providing continued employment for hundreds of people, extending the millions in spending with local businesses and delivering millions more in royalty payments to the NSW Government.

Designed to minimise impacts

The longwall layout and surface infrastructure have been designed to minimise impacts on threatened species and their habitats, and avoid direct disturbance to cultural heritage sites.

Surface infrastructure would be progressively decommissioned over the life of the Project, with disturbed land to be rehabilitated to the pre-mining land use of agriculture and forestry. We will use the existing pit top area for coal handling and transport, so no new coal stockpiles, coal handling and preparation plant or rail load out facilities will need to be constructed to access coal to the south of the existing mine.

Respecting the local environment

We've worked to identify and minimise environmental impacts, including:

- Noise impacts will comply with NSW Government guidelines, or are subject to agreements that are already formed or being negotiated between Whitehaven and relevant landholders.
- Air quality will remain within NSW Government limits at all privately owned receivers.
- The mine has an existing, robust surface water management system that will meet the needs of the Extension Project. The Extension is predicted to have negligible impacts to surface water.
- The Extension will not disturb any alluvial aquifers and it will not impact any bores within the highly productive ground water sources of the Namoi Alluvium or Pilliga Sandstone. For further detail, see the Groundwater fact sheet.
- All water use and impacts will be managed in accordance with state and federal Government guidelines.
- Biodiversity impacts would be offset in accordance with NSW and Federal Government guidelines.
- No long-term impact on agricultural production and biophysical strategic agricultural land.

Find out more

As part of the Government assessment process, we've studied potential impacts and incorporated feedback from a wide range of stakeholders. The results of these studies are outlined in the Environmental Impact Statement (EIS), which includes a proposed design that aims to avoid, minimise or offset environmental and other impacts.

COMPLETED

EIS development

Development Application, including the Environmental Impact Statement (EIS), lodged with NSW Department of Planning, Industry and Environment (DPIE).

DPIE reviews the EIS and prepares for public exhibition.

EIS placed on public exhibition for comment, and submissions are lodged.

WE ARE HERE

Whitehaven responds to submissions made during the exhibition period.

DPIE assesses the EIS, submissions and Whitehaven responses.

The NSW Minister for Planning may direct the Independent Planning Commission (IPC) to undertake an independent review of the Project.

The IPC or a delegate of the Minister for Planning makes a determination.

The NSW Department of Planning, Industry and Environment sought public feedback on the proposal in late 2020. Of the 84 submissions made, 76% were in support of the Project. We are now responding to questions raised in submissions.

Stay up to date on the process at whitehavencoal.com.au/Narrabri

Key benefits of the Narrabri Stage 3 Extension Project



\$599m

added net economic benefit to NSW in addition to the existing mine



500

jobs continuing for decades



\$317m

in direct local wages until 2044



\$259m

in royalties to the NSW Government on top of \$409m from the existing mine



\$247m

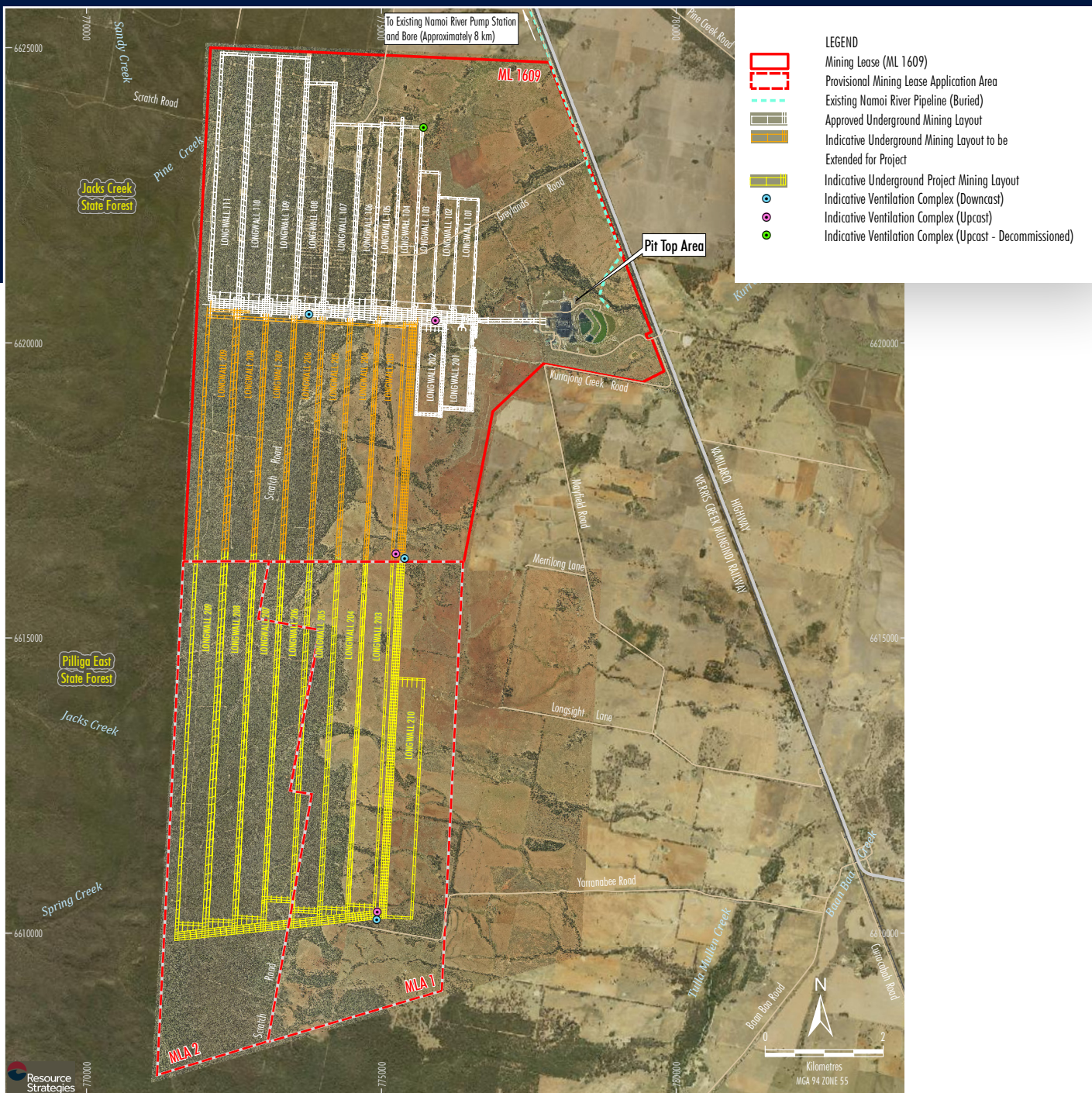
in local supplier expenditure until 2044



75%

of workforce locally-based

* all economic benefits are stated in net present value terms



Find out more

The NSW Department of Planning, Industry and Environment sought public feedback on the proposal in late 2020, and we are now responding to questions raised in submissions.

See the full EIS and stay up to date on the process at whitehavencoal.com.au/Narrabri

For more information, contact the Project Director on 02 6794 4151, narrabrichoaloperations@whitehavencoal.com.au or visit whitehavencoal.com.au/Narrabri

