



Reference: KB

Contact: Kyla Breese

7th September, 2006.

Mr. Ray Robinson,
Werris Creek Coal Pty Ltd,
P.O. Box 5,
CURLEWIS. NSW. 2381.


Dear Ray,

Werris Creek Coal Community Consultative Committee Meeting
held on Tuesday 22 August 2006

Please find attached minutes from the previous Werris Creek Coal Community Consultative Committee Meeting which was held on Tuesday, 22nd August, 2006.

If you have any further enquiries please do not hesitate to contact either myself or Kyla Breese.

Yours faithfully,


per
A. R. Short,
CHAIR.

LIVERPOOL PLAINS SHIRE COUNCIL

60 Station Street PO Box 152 QUIRINDI NSW 2343 TEL 02 6746 1755 FAX 02 6746 3255
EMAIL lpssc@lpssc.nsw.gov.au WEBSITE www.lpssc.gov.au ABN 97 810 717 370

MINUTES

WERRIS CREEK COAL COMMUNITY CONSULTATIVE COMMITTEE MEETING

TUESDAY 22 AUGUST 2006

Present: Cr. Ron Short, Christopher Holley, Ray Robinson, Bob Corbet, Bob Stewart, Kay Neal, John Janetzki, Kyla Breese and Cas Barnes.

Apologies: Tony Ryan and Col Philips

1. OPENING OF MEETING BY THE CHAIRPERSON:

Cr. Ron Short declared the meeting opened at 10.30 a.m. Ron explained that an invitation was extended to Monique McDonald, A/Senior Environmental Officer, NSW Department of Primary Industries – Mineral Resources to present the meeting but was unable to attend. Ron added that Monique should be able to attend the next meeting of the Werris Creek Coal Consultative Committee.

2. MINUTES OF PREVIOUS MEETING:

MOVED Ray Robinson SECONDED Kay Neal that the Minutes of the Werris Creek Coal Community Consultative Committee held on 13th October, 2005 be CONFIRMED.

3. MATTERS ARISING:

Nil.

4. RESIGNATION OF MIKE LOMAX:

Ron Short explained that advertising for a representative to replace Mike Lomax received nil applications and asked the question to the committee if they feel a replacement is required.

Kay Neal then presented the committee with her resignation letter explaining that she now lives in town and the Werris Creek Coal Mine no longer affects her. She added that she felt a resident should replace her, some-one who is directly affected by the Coal Mine.

Ron Short accepted Kay's resignation and stated that the committee still had three (3) external representatives but he and Chris Holley both felt it should go the Department first.

Vacancies for community representatives be run again and appropriate appointment be made through the Department.

5. REVIEW OF CONSULTATIVE COMMITTEE OPERATIONS:

Ron Short explained his reason for adding this topic on the agenda. He expressed that he has had little approach from the outside in relation to the Werris Creek Coal Mine.

Ray Robinson gave an overview of the operations of the mine and the impacts of noise and dust and how the mine monitors these factors. He stated that the closer residents are going to be more effected then others.

Kay Neal questioned Ron Short as to whether he had been receiving any complaints.

Ron Short answered that he received one phone call off Tony Ryan some months ago and also off Bob McInnes (adjacent to Killara Feedlot) regarding a blast on site.

Chris Holley added that he had received no complaints so far.

Bob Stewart offered that Council had received only one (1) compliant.

Kay Neal declared that she had received a number of complaints previously but feels that people are accepting the mine more and accept the blasts, dust and noise.

Bob Corbet informed that there are statutory limits for vibration levels and if they are exceeded a report needs to be made to the Department of Environment and Conservation of NSW. He further added that there has been two (2) formal exceedances which were above 120 decibels from 59 blasts (up until the last financial year).

6. **TABLING OF ANNUAL ENVIRONMENTAL MANAGEMENT REPORT AND DISCUSSION:**

Ray Robinson said that Monique McDonald will go through the performance of the mine. He made a presentation to the committee outlining what the mine has done so far and what the future plans are for the mine. He gave an overview of the water management (storage etc), progressive activities, complaints that had been received, number of staff employed and the blast monitoring and results. He also talked about the relocation of the Axe Grinding Grooves.

Chris Holley would like the committee members to receive monthly interim summaries of the Coal Mine, since the last meeting was held in October.

Ray Robinson added that the company could send the monthly monitoring results to all committee members.

Bob Stewart is to make a copy of the Environmental Management report publicly available.

7. **GENERAL BUSINESS:**

Nil.

Ron Short declared the meeting closed at 12.55 p.m.

Ron Short,
Chairman.

An aerial photograph of a rural landscape. In the center, a town with many houses and buildings is visible. To the left of the town, a large, dark, rectangular area, likely a coal mine or a large pond, is situated. A major highway runs vertically through the center of the image, passing through the town. The surrounding area is mostly green fields and some scattered trees. The text 'Werris Creek Coal Mine' is overlaid on the top part of the image in a large, bold, white font with a green outline.

Werris Creek Coal Mine

**Community
Consultative
Committee**

22 AUGUST 2006



Aerial 16 August 05





Aerial 23 March 06





Mine Water Storage





Water Management





Rail Siding





Rehabilitation





Progressive Activities

- *Mine access road complete 13/01/06*
- *Stage 2 commenced 2 weeks later*
- *Demolition of Narrawolga complete following heritage report to Council*
- *Purchased Hillview property*



Progressive Activities (cont)

- *Production to 31 July 2006*
- *Area cleared 98 Ha*
- *Topsoil/subsoil removed 1.1 Mbcm*
- *Overburden removed 6.5 Mbcm*
- *Coal mined 1.03 Mtonnes*



Personnel

Werris Creek Coal

Crushing, hauling & train loading

Tamworth	4
Curlewis	2
Quirindi	1
Werris Creek	4

Casuals

Werris Creek	2
Total	13



Personnel

Roche Mining

Mining Operations

Employees at 30 Jul 06

Tamworth	14
Quirindi	14
Werris Creek	2
Gunnedah	2
Other	5
Total	37



Complaints



Complaints

07 Excessive dust, North

08 Lights pointed at residence, South

09 Noise, North

10 Noise, North

11 Rail crossing & mine dust, LPSC

12 Blast 24/07/2006, North



Complaints (cont)

13 Noise & lights, East



Blast Overpressure Exceedance

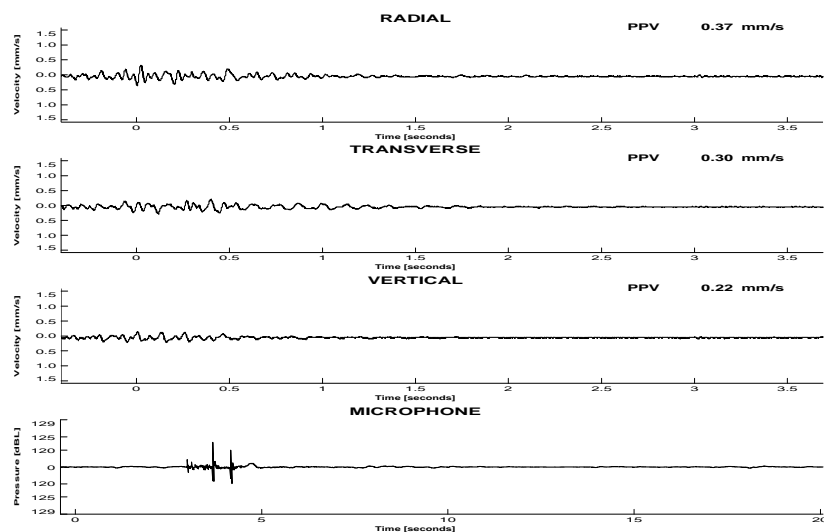
Reported to EPA 04/07/06



Werris Creek

Time: 13:13:38
Date: 04 Jul 2006

Monitor Location: Hillview
Blast No/Id: WC66_sh63



Blast Overpressure

04 July 2006

Blast overpressure criteria:

Less than 115dBL 95% of blasts

Not to exceed 120dBL

BLAST SUMMARY

Pattern Type	: Staggered	Max. Inst. Charge	: 240kgs
Pattern Size (m)	: 4.5 x 5	Explosive (Type & Weight)	
Designed Tonnage	: 5708 kgs	a) TM830 @ 1.2 g/cc	
Bench Height (m)	: 1.8 – 7 mtrs	b)	
Number of Rows	: 10	c)	
Number of Holes	: 192	Delay Type - Electronic	
Blasthole Dia. (mm)	: 171mm	- Average Interval (ms):	9.42 ms
Stemming (m)	: 1.8 – 3.0 mtrs	- Duration (ms)	1800 ms
Sub Drill	: 0		

Peak Vector Sum Velocity : 0.40 mm/s
Peak Overpressure : 123.3 dBL

Comments & Observations

.

Monitoring conducted by:Jim Drane.....Roche Blasting Services.....
Roche Blasting Services

Checked by:

TM Serial Number: 3041

Last Calibration: 08 Apr 2006

EL:4.0 Werris Creek\WC Standard.rtf

Werris Creek\Hillview\Hillview - 2006-07-04 13.13.38 - 1.twf

Blast Monitoring



Monitoring Results



- *Blast Monitoring, each blast*
- *Deposited Dust, monthly*
- *PM10 Dust Concentration, 6 day cycle*
- *Water Bore Testing, now 3 monthly*
- *Noise Modelling, monthly*



The Future

- *MOP to be modified to reflect variation in rehabilitation timetable*
- *Discussion with Nungaroo LALC and others regarding relocation of Axe Grinding Grooves*
- *On schedule to produce 1.4 Mtpa*



THANK YOU

Next Meeting: