

## TARRAWONGA COAL MINE – MONTHLY MONITORING SUMMARY

### Site Information

**EPL No:** 12365

**EPA Website Link:** <http://www.epa.nsw.gov.au/prpoeoapp/ViewPOEOLicence.aspx?DOCID=55113&SYSUID=1&LICID=12365>

**Licensee:** Tarrawonga Coal Pty Ltd

**Licensee Address:** Tarrawonga Coal Mine, 469 Goonbri Road, BOGGABRI NSW 2382

**EPL Monitoring Points:** See Figure 1 below

**Sampling Period:** August 2021

**Obtained Date:** 6/08/2021

**Publication Date:** 6/08/2021

**Table 1 - No Pollutant Limits Apply**

EPL ID	Pollutant	Units of Measure	Monitoring Frequency	No. of Samples for the Month	Date Sampled	Date of Max. Value Obtained	Min Value	Mean Value	Median Value	Max or Only Value	Comments
5	TSS	mg/L	Upon discharge	0	-	-	-	-	-	-	-
	Conductivity	µS/cm		0	-	-	-	-	-	-	-
	Oil & Grease	mg/L		0	-	-	-	-	-	-	-
	pH	pH		0	-	-	-	-	-	-	-
6	TSS	mg/L	Upon discharge	0	-	-	-	-	-	-	-
	Conductivity	µS/cm		0	-	-	-	-	-	-	-
	Oil & Grease	mg/L		0	-	-	-	-	-	-	-
	pH	pH		0	-	-	-	-	-	-	-

Table 2 - Pollutant Limits Apply

EPL ID	Pollutant	Units of Measure	Monitoring Frequency	No. of Samples for the Month	Date Sampled	Date of Max. Value Obtained	Min Value	Max or Only Value	100%ile Limit	Exceed-ance (Yes/No)	Comment/s
1	TSS	mg/L	Upon discharge	0	-	-	-	-	-	-	-
	Conductivity	µS/cm		0	-	-	-	-	-	-	-
	Oil & Grease	mg/L		0	-	-	-	-	-	-	-
	pH	pH		0	-	-	-	-	-	-	-
2	TSS	mg/L	Upon discharge	6	4-8-21 & 19-8-21	6-8-21	25	48	50	No	Controlled release. Duplicate samples taken for two events over multiple days.
	Conductivity	µS/cm		6	4-8-21 & 19-8-21	20-8-21	303	345	NA	No	
	Oil & Grease	mg/L		6	4-8-21 & 19-8-21	-	<5	<5	10	No	
	pH	pH		6	4-8-21 & 19-8-21	4-8-21	7.18	8.06	6.5-8.5	No	
3	TSS	mg/L	Upon discharge	0	-	-	-	-	-	-	-
	Conductivity	µS/cm		0	-	-	-	-	-	-	-
	Oil & Grease	mg/L		0	-	-	-	-	-	-	-
	pH	pH		0	-	-	-	-	-	-	-
24	TSS	mg/L		0	-	-	-	-	-	-	-

EPL ID	Pollutant	Units of Measure	Monitoring Frequency	No. of Samples for the Month	Date Sampled	Date of Max. Value Obtained	Min Value	Max or Only Value	100%ile Limit	Exceed-ance (Yes/ No)	Comment/s
	Conductivity	µS/cm	Upon discharge	0	-	-	-	-	-	-	-
	Oil & Grease	mg/L		0	-	-	-	-	-	-	-
	pH	pH		0	-	-	-	-	-	-	-
26	TSS	mg/L	Upon discharge	4	4-8-21 & 19-8-21	19-08-21	<5	<5	50	No	Controlled release. Duplicate samples taken for two events.
	Conductivity	µS/cm		4	4-8-21 & 19-8-21	19-08-21	302	302	NA	No	
	Oil & Grease	mg/L		4	4-8-21 & 19-8-21	19-08-21	<5	<5	10	No	
	pH	pH		4	4-8-21 & 19-8-21	19-08-21	7.36	7.59	6.5-8.5	No	
27	TSS	mg/L	Upon discharge	0	-	-	-	-	-	-	-
	Conductivity	µS/cm		0	-	-	-	-	-	-	-
	Oil & Grease	mg/L		0	-	-	-	-	-	-	-
	pH	pH		0	-	-	-	-	-	-	-

**Table 3 – Monitoring (Quarterly & 6 Monthly – No Limits apply)**

EPL ID	Pollutant	Units of Measure	Monitoring Frequency	No. of Samples for the Period	Date Sampled	Date of Max. Value Obtained	Min Value	Mean Value	Median Value	Max or Only Value
9	Conductivity	µS/cm	6 monthly – (Mar- Sep)	0	-	-	-	-	-	-
	Lead	mg/L		0	-	-	-	-	-	-
	pH	pH		0	-	-	-	-	-	-
	Standing Water Level	metres		0	-	-	-	-	-	-
10	Conductivity	µS/cm	6 monthly – (Mar- Sep)	0	-	-	-	-	-	-
	Lead	mg/L		0	-	-	-	-	-	-
	pH	pH		0	-	-	-	-	-	-
	Standing Water Level	metres		0	-	-	-	-	-	-
12	Conductivity	µS/cm	6 monthly – (Mar- Sep)	0	-	-	-	-	-	-
	Lead	mg/L		0	-	-	-	-	-	-
	pH	pH		0	-	-	-	-	-	-
	Standing Water Level	metres		0	-	-	-	-	-	-
13	Conductivity	µS/cm	Quarterly - (Feb, May, Aug, Nov)	1	16-8-2021	16-8-2021				1,240
	Oil & Grease	mg/L		1	16-8-2021	16-8-2021				<5
	pH	pH		1	16-8-2021	16-8-2021				8.84
	TSS	mg/L		1	16-8-2021	16-8-2021				11

**Table 4 – Quarterly Attended Noise Monitoring**

(Noise Limits Apply -35dB LAeq(15min) -Day, Evening and Night;45dB LA1(1min) -Night )

*Next quarterly attended noise monitoring conducted in September.*

**Table 5 – Monthly Monitoring (Blasts – Limits Apply)**

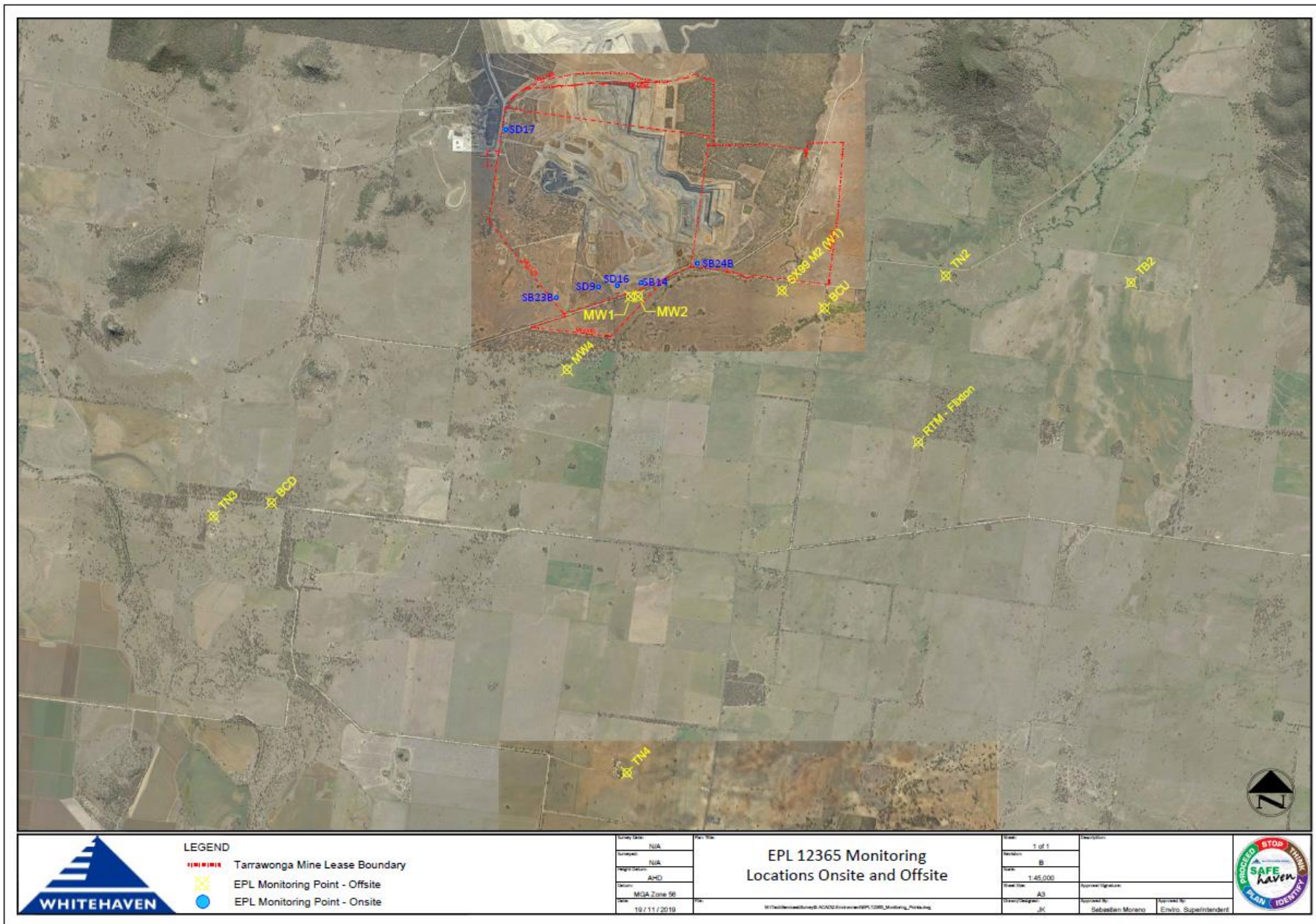
Location	Parameter	Units of Measure	Frequency	No. of Blasts for the Month	Average Value	Max Value	100%ile Limit	(Potential) Non-compliance /breach	Date of Max. Value Obtained
Coomalgah (TB2)	Blast Noise	dB (Lin Peak)	Every Blast	6	101.80	113.4	120	Nil	30-08-21
	Blast Vibration	mm/s	Every Blast	6	0.16	0.25	10	Nil	30-08-21

**Table 6- Monthly Monitoring (Dust PM10 – No Limits apply)**

Location	No. of samples required by licence	Lowest sample value	Mean of sample	Highest sample value
“Flixton” property* TEOM (µg/m <sup>3</sup> )	Continuous	0	11.3	25.4

*\*Mine owned property – no limit apply*

Figure 1 – EPL 12365 Monitoring Locations



**LEGEND**  
 Tarrawonga Mine Lease Boundary  
 EPL Monitoring Point - Offsite  
 EPL Monitoring Point - Onsite

Drawn Date:	N/A
Drawn By:	N/A
Project Name:	AMD
Location:	MGA Zone 96
Date:	19/11/2019

**EPL 12365 Monitoring Locations Onsite and Offsite**

Page:	1 of 1
Revision:	B
Scale:	1:65,000
Sheet No.:	A3
Author:	JK
Checked By:	Sebastian Moreno
Approved By:	Enviro. Superintendent

