



## TARRAWONGA COAL MINE – MONTHLY MONITORING SUMMARY

### Site Information

**EPL No:** 12365

**EPA Website Link:** <http://www.epa.nsw.gov.au/prpoeoapp/ViewPOEOLicence.aspx?DOCID=55113&SYSUID=1&LICID=12365>

**Licensee:** Tarrawonga Coal Pty Ltd

**Licensee Address:** Tarrawonga Coal Mine, 469 Goonbri Road, BOGGABRI NSW 2382

**EPL Monitoring Points:** See Figure 1 and 2 below

**Sampling Period:** January 2018

**Obtained Date:** 5/02/2018

**Publication Date:** 5/02/2018

**Table 1 - No Pollutant Limits Apply**

EPL ID	Pollutant	Units of Measure	Monitoring Frequency	No. of Samples for the Month	Date Sampled	Date Obtained	Min Value	Mean Value	Median Value	Max or Only Value
5	TSS	mg/L	Upon discharge	0	-	-	-	-	-	-
	Conductivity	ms/cm		0	-	-	-	-	-	-
	Oil & Grease	mg/L		0	-	-	-	-	-	-
	pH	pH		0	-	-	-	-	-	-
6	TSS	mg/L	Upon discharge	0	-	-	-	-	-	-
	Conductivity	ms/cm		0	-	-	-	-	-	-
	Oil & Grease	mg/L		0	-	-	-	-	-	-
	pH	pH		0	-	-	-	-	-	-
7	TSS	mg/L	Upon discharge	0	-	-	-	-	-	-
	Conductivity	ms/cm		0	-	-	-	-	-	-
	Oil & Grease	mg/L		0	-	-	-	-	-	-
	pH	pH		0	-	-	-	-	-	-
8	TSS	mg/L	Upon discharge	0	-	-	-	-	-	-
	Conductivity	ms/cm		0	-	-	-	-	-	-
	Oil & Grease	mg/L		0	-	-	-	-	-	-
	pH	pH		0	-	-	-	-	-	-



**Table 2 - Pollutant Limits Apply**

EPL ID	Pollutant	Units of Measure	Monitoring Frequency	No. of Samples for the Month	Date Sampled	Date Obtained	Min Value	Max or Only Value	100%ile Limit	Exceedance (Yes/No)	Comments
1	TSS	mg/L	Upon discharge	0	-	-	-	-		-	-
	Oil & Grease	mg/L		0	-	-	-	-		-	-
	pH	pH		0	-	-	-	-		-	-
2	TSS	mg/L	Upon discharge	0	-	-	-	-		-	-
	Oil & Grease	mg/L		0	-	-	-	-		-	-
	pH	pH		0	-	-	-	-		-	-
3	TSS	mg/L	Upon discharge	0	-	-	-	-		-	-
	Oil & Grease	mg/L		0	-	-	-	-		-	-
	pH	pH		0	-	-	-	-		-	-
24	TSS	mg/L	Upon discharge	0	-	-	-	-		-	-
	Oil & Grease	mg/L		0	-	-	-	-		-	-
	pH	pH		0	-	-	-	-		-	-
25	TSS	mg/L	Upon discharge	0	-	-	-	-		-	-
	Oil & Grease	mg/L		0	-	-	-	-		-	-
	pH	pH		0	-	-	-	-		-	-
26	TSS	mg/L	Upon discharge	0	-	-	-	-		-	-
	Oil & Grease	mg/L		0	-	-	-	-		-	-
	pH	pH		0	-	-	-	-		-	-
27	TSS	mg/L	Upon discharge	0	-	-	-	-		-	-
	Oil & Grease	mg/L		0	-	-	-	-		-	-
	pH	pH		0	-	-	-	-		-	-



**Table 3 – Monitoring (Quarterly & 6 Monthly – No Limits apply)**

EPL ID	Pollutant	Units of Measure	Monitoring Frequency	No. of Samples for the Period	Date Sampled	Date Obtained	Min Value	Mean Value	Median Value	Max or Only Value
9	Conductivity	ms/cm	6 monthly	0	-	-	-	-		
	Lead	mg/L		0	-	-	-	-		
	pH	pH		0	-	-	-	-		
	Standing Water Level	metres		0	-	-	-	-		
10	Conductivity	ms/cm	6 monthly	0	-	-	-	-		
	Lead	mg/L		0	-	-	-	-		
	pH	pH		0	-	-	-	-		
	Standing Water Level	metres		0	-	-	-	-		
11	Conductivity	ms/cm	6 monthly	0	-	-	-	-		
	Lead	mg/L		0	-	-	-	-		
	pH	pH		0	-	-	-	-		
	Standing Water Level	metres		0	-	-	-	-		
12	Conductivity	ms/cm	6 monthly	0	-	-	-	-		
	Lead	mg/L		0	-	-	-	-		
	pH	pH		0	-	-	-	-		
	Standing Water Level	metres		0	-	-	-	-		
13	Conductivity	ms/cm	Quarterly	0	-	-	-	-		
	Oil & Grease	mg/L		0	-	-	-	-		
	pH	pH		0	-	-	-	-		
	TSS	mg/L		0	-	-	-	-		



**Table 4 – Monitoring (Noise – Limits Apply)**

EPL ID	Date	Start Time	Measurement period	Measured Levels – dB(A) L <sub>eq</sub> 15min Day	Measured Levels – dB(A) L <sub>eq</sub> 15min Evening	Measured Levels – dB(A) L <sub>eq</sub> 15min Night	Measured Levels – dB(A) L <sub>A1</sub> (1 min) Night	Limit	Wind Speed (m/s)	Stability Class	Compliant (Yes/No)	Date Obtained
TN2	-	-	-	-				-	-	-	-	No Sampling
	-	-	-		-			-	-	-	-	
	-	-	-			-		-	-	-	-	
	-	-	-				-	-	-	-	-	



**Table 5 – Monitoring (Noise – Limits Apply)**

EPL ID	Date	Start Time	Measurement period	Measured Levels – dB(A) L <sub>eq</sub> 15min Day	Measured Levels – dB(A) L <sub>eq</sub> 15min Evening	Measured Levels – dB(A) L <sub>eq</sub> 15min Night	Measured Levels – dB(A) L <sub>A1</sub> (1 min) Night	Limit	Wind Speed (m/s)	Stability Class	Compliant (Yes/No)	Date Obtained
TN3	-	-	-	-				-	-	-	-	No Sampling
	-	-	-		-			-	-	-	-	
	-	-	-			-		-	-	-	-	
	-	-	-				-	-	-	-	-	



**Table 6 – Monitoring (Noise – Limits Apply)**

EPL ID	Date	Start Time	Measurement period	Measured Levels – dB(A) L <sub>eq</sub> 15min Day	Measured Levels – dB(A) L <sub>eq</sub> 15min Evening	Measured Levels – dB(A) L <sub>eq</sub> 15min Night	Measured Levels – dB(A) L <sub>A1</sub> (1 min) Night	Limit	Wind Speed (m/s)	Stability Class	Compliant (Yes/No)	Date Obtained
TN4	-	-	-	-	-	-	-	-	-	-	-	No Sampling
	-	-	-	-	-	-	-	-	-	-	-	
	-	-	-	-	-	-	-	-	-	-	-	
	-	-	-	-	-	-	-	-	-	-	-	

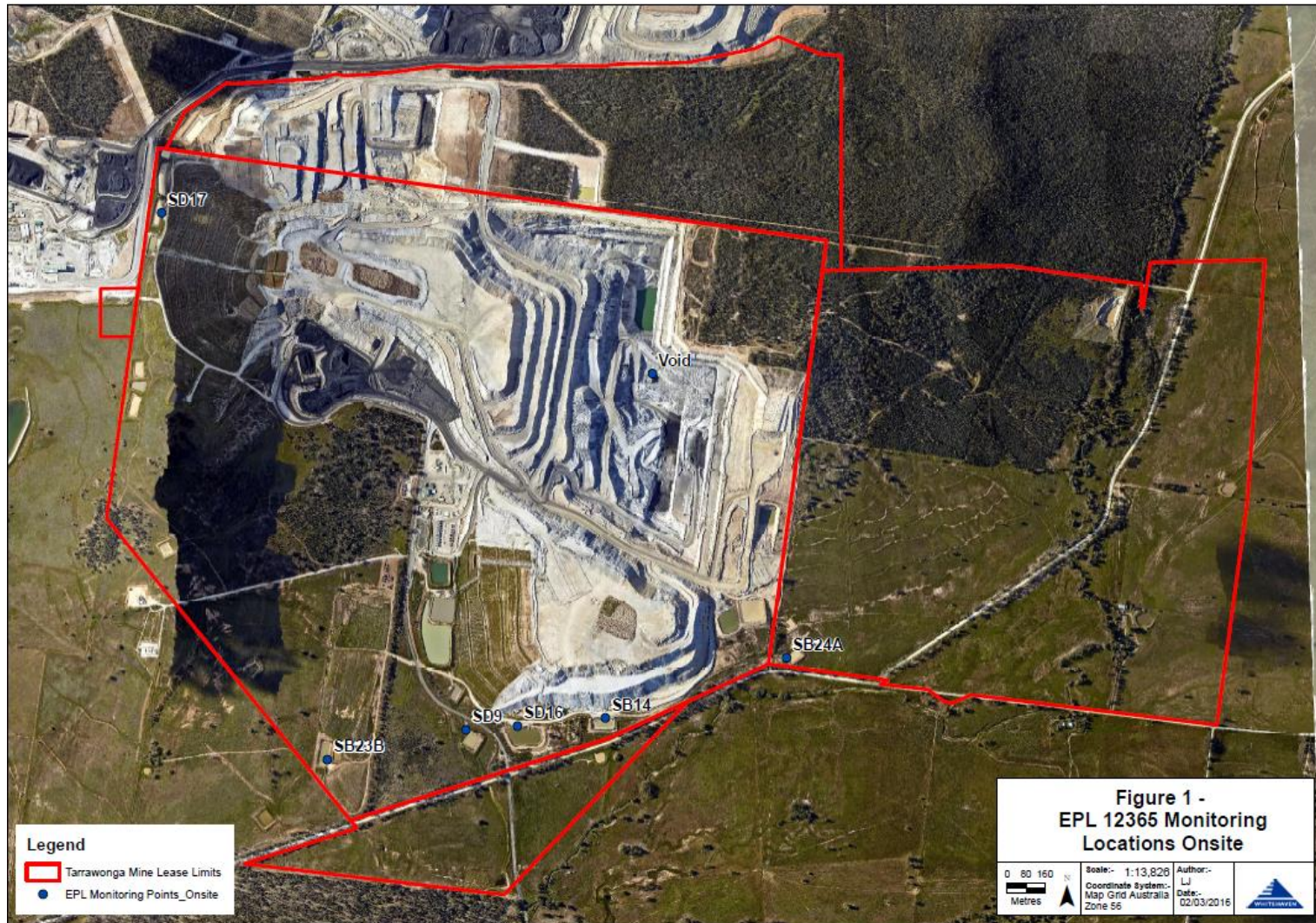


**Table 7 – Monitoring (Blasts – Limits Apply)**

Location	Parameter	Units of Measure	Frequency	No. of Blasts for the Month	Average Value	Max Value	100%ile Limit	(Potential) Non-compliance /breach	Date Obtained
Tarrawonga	Blast Noise	dB (Lin Peak)	Every Blast	9	92.15	107	120	Nil	05/02/2018
	Blast Vibration	mm/s	Every Blast	9	0.25	0.76	10	Nil	05/02/2018

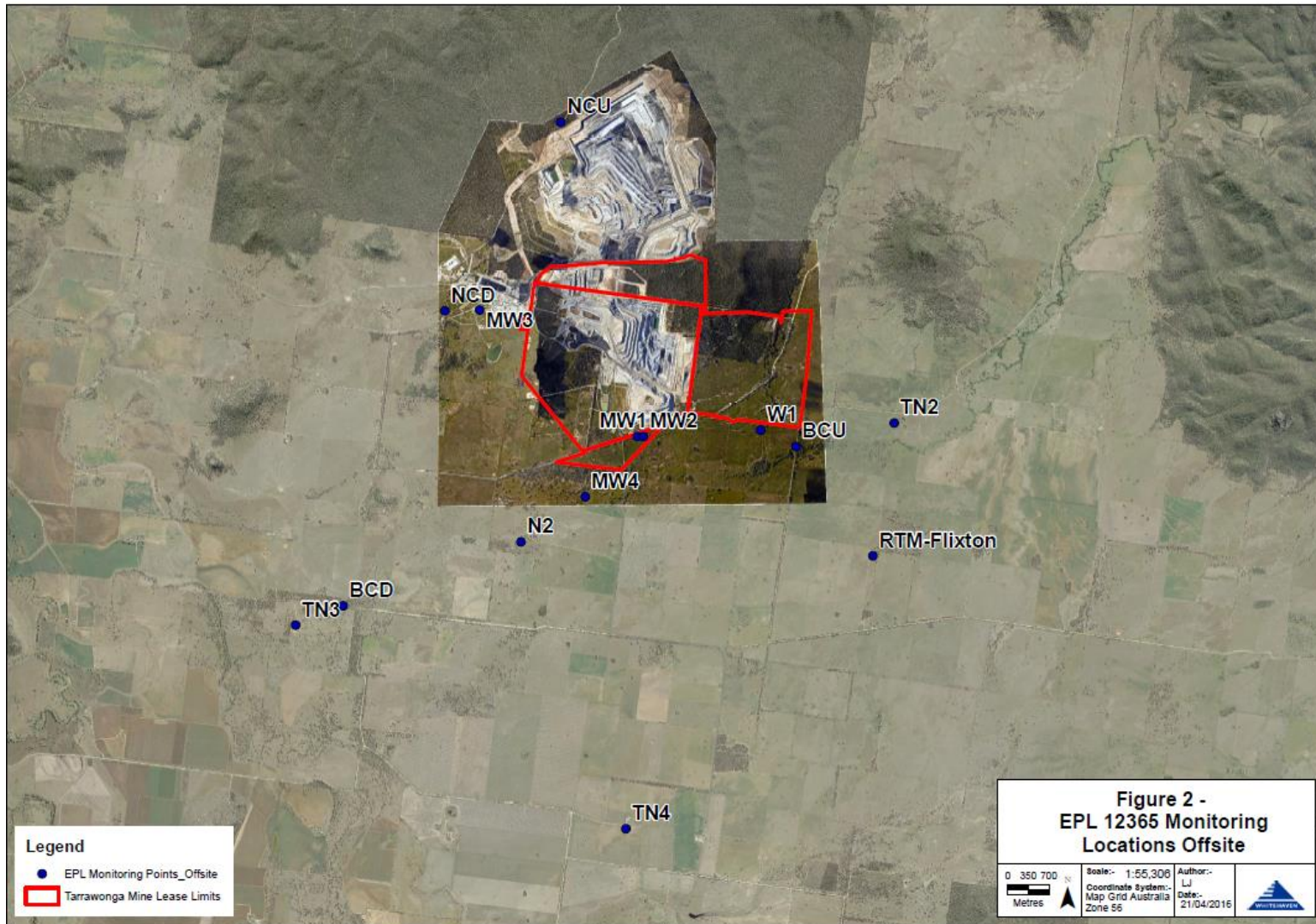


Figure 1 – EPL 12365 Onsite Monitoring Locations





**Figure 2 – EPL 12365 Offsite Monitoring Locations**





## TARRAWONGA COAL MINE – MONTHLY MONITORING SUMMARY

### Site Information

**EPL No:** 12365

**EPA Website Link:** <http://www.epa.nsw.gov.au/prpoeoapp/ViewPOEOLicence.aspx?DOCID=55113&SYSUID=1&LICID=12365>

**Licensee:** Tarrawonga Coal Pty Ltd

**Licensee Address:** Tarrawonga Coal Mine, 469 Goonbri Road, BOGGABRI NSW 2382

**EPL Monitoring Points:** See Figure 1 and 2 below

**Sampling Period:** February 2018

**Obtained Date:** 2/03/2018

**Publication Date:** 2/03/2018

**Table 1 - No Pollutant Limits Apply**

EPL ID	Pollutant	Units of Measure	Monitoring Frequency	No. of Samples for the Month	Date Sampled	Date Obtained	Min Value	Mean Value	Median Value	Max or Only Value
5	TSS	mg/L	Upon discharge	0	-	-	-	-	-	-
	Conductivity	ms/cm		0	-	-	-	-	-	-
	Oil & Grease	mg/L		0	-	-	-	-	-	-
	pH	pH		0	-	-	-	-	-	-
6	TSS	mg/L	Upon discharge	0	-	-	-	-	-	-
	Conductivity	ms/cm		0	-	-	-	-	-	-
	Oil & Grease	mg/L		0	-	-	-	-	-	-
	pH	pH		0	-	-	-	-	-	-
7	TSS	mg/L	Upon discharge	0	-	-	-	-	-	-
	Conductivity	ms/cm		0	-	-	-	-	-	-
	Oil & Grease	mg/L		0	-	-	-	-	-	-
	pH	pH		0	-	-	-	-	-	-
8	TSS	mg/L	Upon discharge	0	-	-	-	-	-	-
	Conductivity	ms/cm		0	-	-	-	-	-	-
	Oil & Grease	mg/L		0	-	-	-	-	-	-
	pH	pH		0	-	-	-	-	-	-



Table 2 - Pollutant Limits Apply

EPL ID	Pollutant	Units of Measure	Monitoring Frequency	No. of Samples for the Month	Date Sampled	Date Obtained	Min Value	Max or Only Value	100%ile Limit	Exceedance (Yes/No)	Comments
1	TSS	mg/L	Upon discharge	0	-	-	-	-		-	-
	Oil & Grease	mg/L		0	-	-	-	-		-	-
	pH	pH		0	-	-	-	-		-	-
2	TSS	mg/L	Upon discharge	0	-	-	-	-		-	-
	Oil & Grease	mg/L		0	-	-	-	-		-	-
	pH	pH		0	-	-	-	-		-	-
3	TSS	mg/L	Upon discharge	0	-	-	-	-		-	-
	Oil & Grease	mg/L		0	-	-	-	-		-	-
	pH	pH		0	-	-	-	-		-	-
24	TSS	mg/L	Upon discharge	0	-	-	-	-		-	-
	Oil & Grease	mg/L		0	-	-	-	-		-	-
	pH	pH		0	-	-	-	-		-	-
25	TSS	mg/L	Upon discharge	0	-	-	-	-		-	-
	Oil & Grease	mg/L		0	-	-	-	-		-	-
	pH	pH		0	-	-	-	-		-	-
26	TSS	mg/L	Upon discharge	0	-	-	-	-		-	-
	Oil & Grease	mg/L		0	-	-	-	-		-	-
	pH	pH		0	-	-	-	-		-	-
27	TSS	mg/L	Upon discharge	0	-	-	-	-		-	-
	Oil & Grease	mg/L		0	-	-	-	-		-	-
	pH	pH		0	-	-	-	-		-	-



**Table 3 – Monitoring (Quarterly & 6 Monthly – No Limits apply)**

EPL ID	Pollutant	Units of Measure	Monitoring Frequency	No. of Samples for the Period	Date Sampled	Date Obtained	Min Value	Mean Value	Median Value	Max or Only Value
9	Conductivity	ms/cm	6 monthly	0	-	-	-	-		
	Lead	mg/L		0	-	-	-	-		
	pH	pH		0	-	-	-	-		
	Standing Water Level	metres		0	-	-	-	-		
10	Conductivity	ms/cm	6 monthly	0	-	-	-	-		
	Lead	mg/L		0	-	-	-	-		
	pH	pH		0	-	-	-	-		
	Standing Water Level	metres		0	-	-	-	-		
11	Conductivity	ms/cm	6 monthly	0	-	-	-	-		
	Lead	mg/L		0	-	-	-	-		
	pH	pH		0	-	-	-	-		
	Standing Water Level	metres		0	-	-	-	-		
12	Conductivity	ms/cm	6 monthly	0	-	-	-	-		
	Lead	mg/L		0	-	-	-	-		
	pH	pH		0	-	-	-	-		
	Standing Water Level	metres		0	-	-	-	-		
13	Conductivity	ms/cm	Quarterly	1	22/02/2018	-	-	-	3.600	-
	Oil & Grease	mg/L		1	22/02/2018	-	-	-	<5	-
	pH	pH		1	22/02/2018	-	-	-	8.7	-
	TSS	mg/L		1	22/02/2018	-	-	-	15	-



**Table 4 – Quarterly Monitoring (Noise – Limits Apply)**

EPL ID	Date	Start Time	Measurement period	Measured Levels – dB(A) L <sub>eq</sub> 15min Day	Measured Levels – dB(A) L <sub>eq</sub> 15min Evening	Measured Levels – dB(A) L <sub>eq</sub> 15min Night	Measured Levels – dB(A) L <sub>A1</sub> (1 min) Night	Limit	Wind Speed (m/s)	Stability Class	Compliant (Yes/No)	Date Obtained
TN2	-	-	-	-				-	-	-	-	No Sampling
	-	-	-		-			-	-	-	-	
	-	-	-			-		-	-	-	-	
	-	-	-				-	-	-	-	-	



**Table 5 – Quarterly Monitoring (Noise – Limits Apply)**

EPL ID	Date	Start Time	Measurement period	Measured Levels – dB(A) L <sub>eq</sub> 15min Day	Measured Levels – dB(A) L <sub>eq</sub> 15min Evening	Measured Levels – dB(A) L <sub>eq</sub> 15min Night	Measured Levels – dB(A) L <sub>A1</sub> (1 min) Night	Limit	Wind Speed (m/s)	Stability Class	Compliant (Yes/No)	Date Obtained
TN3	-	-	-	-				-	-	-	-	No Sampling
	-	-	-		-			-	-	-	-	
	-	-	-			-		-	-	-	-	
	-	-	-				-	-	-	-	-	



**Table 6 – Quarterly Monitoring (Noise – Limits Apply)**

EPL ID	Date	Start Time	Measurement period	Measured Levels – dB(A) L <sub>eq</sub> 15min Day	Measured Levels – dB(A) L <sub>eq</sub> 15min Evening	Measured Levels – dB(A) L <sub>eq</sub> 15min Night	Measured Levels – dB(A) L <sub>A1</sub> (1 min) Night	Limit	Wind Speed (m/s)	Stability Class	Compliant (Yes/No)	Date Obtained
TN4	-	-	-	-	-	-	-	-	-	-	-	No Sampling
	-	-	-	-	-	-	-	-	-	-	-	
	-	-	-	-	-	-	-	-	-	-	-	
	-	-	-	-	-	-	-	-	-	-	-	





**Table 7 – Monthly Monitoring (Blasts – Limits Apply)**

Location	Parameter	Units of Measure	Frequency	No. of Blasts for the Month	Average Value	Max Value	100%ile Limit	(Potential) Non-compliance /breach	Date Obtained
Tarrawonga	Blast Noise	dB (Lin Peak)	Every Blast	7	98.81	104.7	120	Nil	28/02/2018
	Blast Vibration	mm/s	Every Blast	7	0.17	0.25	10	Nil	28/02/2018

Figure 1 – EPL 12365 Onsite Monitoring Locations

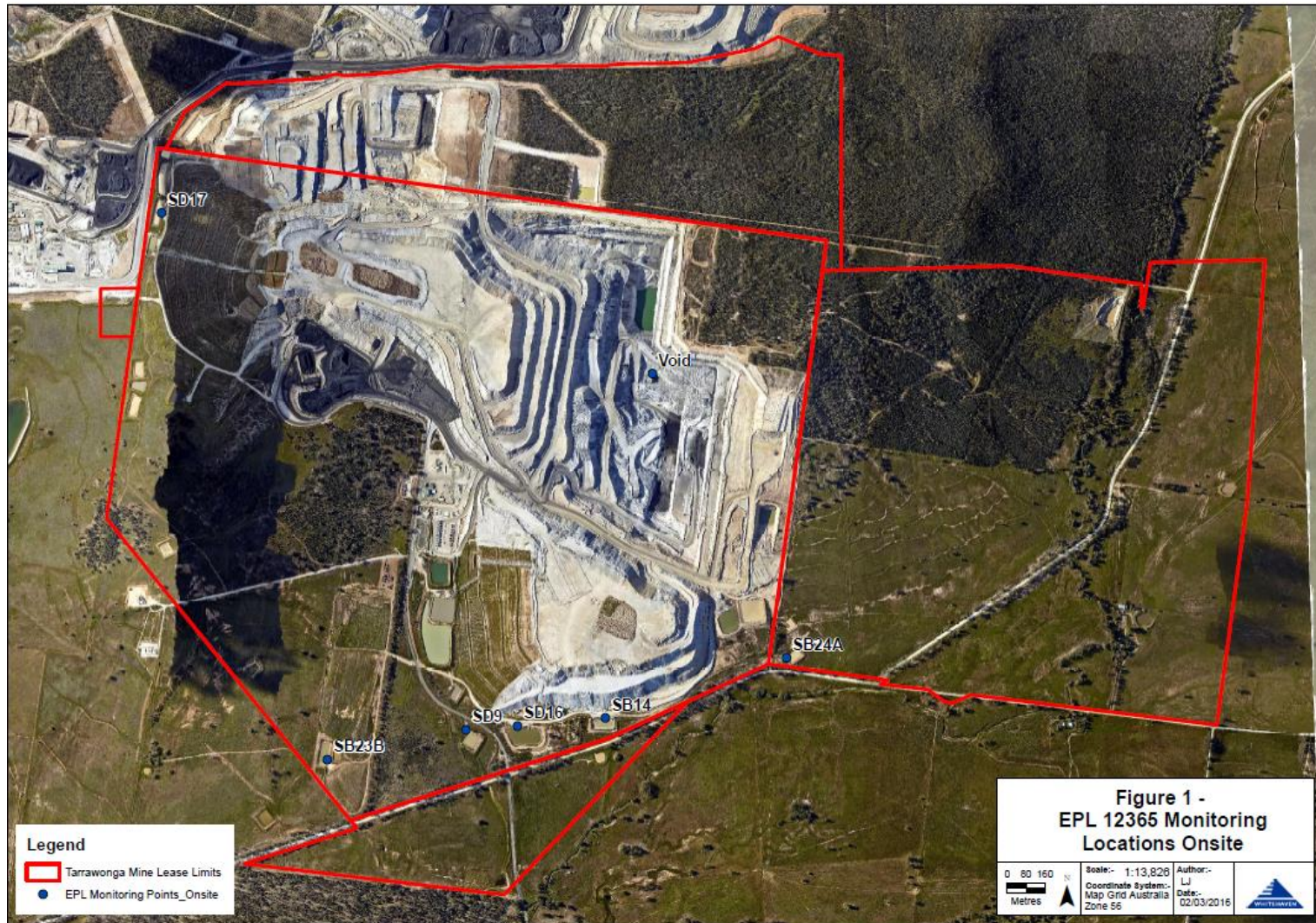
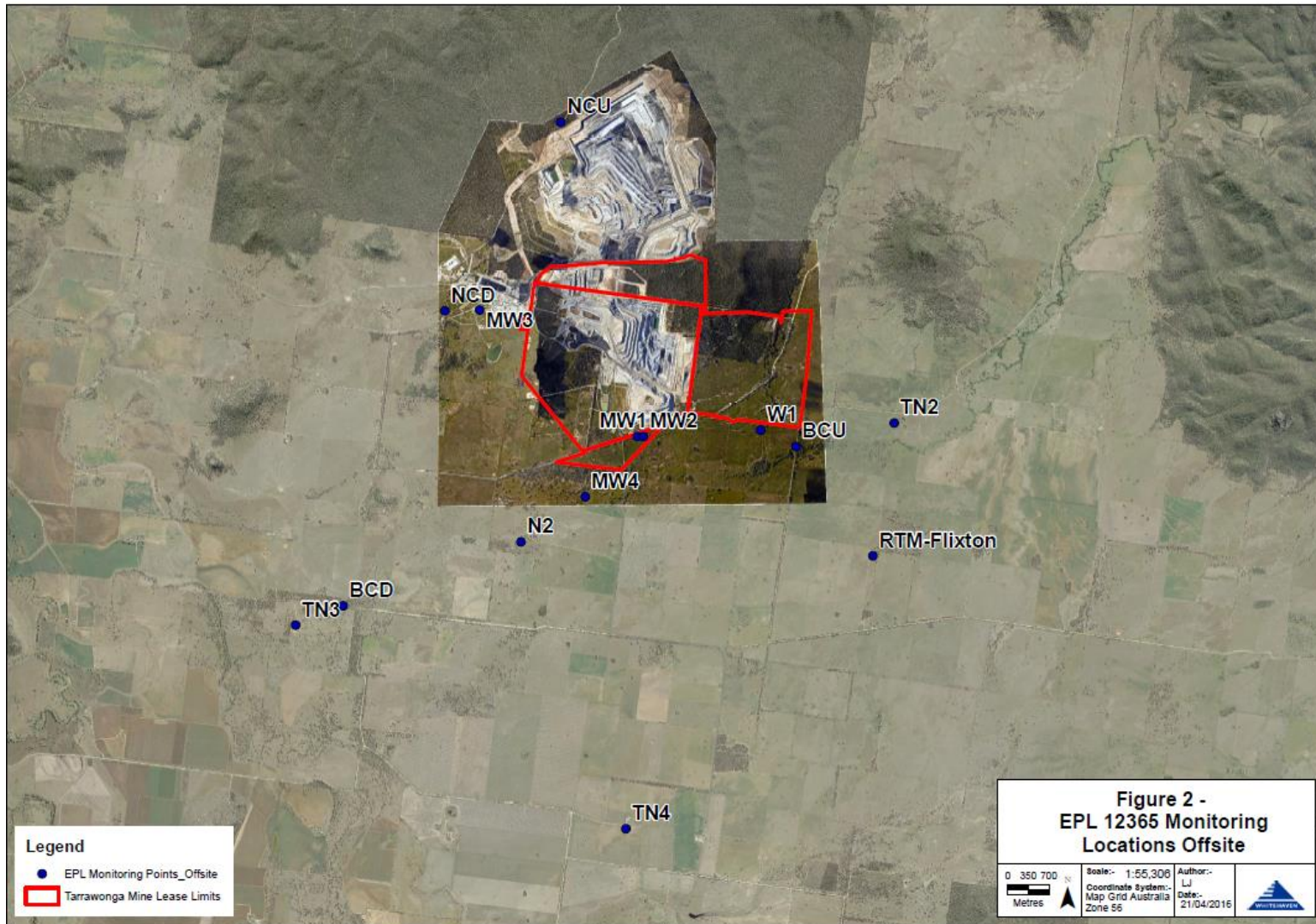




Figure 2 – EPL 12365 Offsite Monitoring Locations





## TARRAWONGA COAL MINE – MONTHLY MONITORING SUMMARY

### Site Information

**EPL No:** 12365

**EPA Website Link:** <http://www.epa.nsw.gov.au/prpoeoapp/ViewPOEOLicence.aspx?DOCID=55113&SYSUID=1&LICID=12365>

**Licensee:** Tarrawonga Coal Pty Ltd

**Licensee Address:** Tarrawonga Coal Mine, 469 Goonbri Road, BOGGABRI NSW 2382

**EPL Monitoring Points:** See Figure 1 and 2 below

**Sampling Period:** March 2018

**Obtained Date:** 4/04/2018

**Publication Date:** 6/04/2018

**Table 1 - No Pollutant Limits Apply**

EPL ID	Pollutant	Units of Measure	Monitoring Frequency	No. of Samples for the Month	Date Sampled	Date Obtained	Min Value	Mean Value	Median Value	Max or Only Value
5	TSS	mg/L	Upon discharge	0	-	-	-	-	-	-
	Conductivity	ms/cm		0	-	-	-	-	-	-
	Oil & Grease	mg/L		0	-	-	-	-	-	-
	pH	pH		0	-	-	-	-	-	-
6	TSS	mg/L	Upon discharge	0	-	-	-	-	-	-
	Conductivity	ms/cm		0	-	-	-	-	-	-
	Oil & Grease	mg/L		0	-	-	-	-	-	-
	pH	pH		0	-	-	-	-	-	-
7	TSS	mg/L	Upon discharge	0	-	-	-	-	-	-
	Conductivity	ms/cm		0	-	-	-	-	-	-
	Oil & Grease	mg/L		0	-	-	-	-	-	-
	pH	pH		0	-	-	-	-	-	-
8	TSS	mg/L	Upon discharge	0	-	-	-	-	-	-
	Conductivity	ms/cm		0	-	-	-	-	-	-
	Oil & Grease	mg/L		0	-	-	-	-	-	-
	pH	pH		0	-	-	-	-	-	-



**Table 2 - Pollutant Limits Apply**

EPL ID	Pollutant	Units of Measure	Monitoring Frequency	No. of Samples for the Month	Date Sampled	Date Obtained	Min Value	Max or Only Value	100%ile Limit	Exceedance (Yes/No)	Comments
1	TSS	mg/L	Upon discharge	0	-	-	-	-		-	-
	Oil & Grease	mg/L		0	-	-	-	-		-	-
	pH	pH		0	-	-	-	-		-	-
2	TSS	mg/L	Upon discharge	0	-	-	-	-		-	-
	Oil & Grease	mg/L		0	-	-	-	-		-	-
	pH	pH		0	-	-	-	-		-	-
3	TSS	mg/L	Upon discharge	0	-	-	-	-		-	-
	Oil & Grease	mg/L		0	-	-	-	-		-	-
	pH	pH		0	-	-	-	-		-	-
24	TSS	mg/L	Upon discharge	0	-	-	-	-		-	-
	Oil & Grease	mg/L		0	-	-	-	-		-	-
	pH	pH		0	-	-	-	-		-	-
25	TSS	mg/L	Upon discharge	0	-	-	-	-		-	-
	Oil & Grease	mg/L		0	-	-	-	-		-	-
	pH	pH		0	-	-	-	-		-	-
26	TSS	mg/L	Upon discharge	0	-	-	-	-		-	-
	Oil & Grease	mg/L		0	-	-	-	-		-	-
	pH	pH		0	-	-	-	-		-	-
27	TSS	mg/L	Upon discharge	0	-	-	-	-		-	-
	Oil & Grease	mg/L		0	-	-	-	-		-	-
	pH	pH		0	-	-	-	-		-	-



**Table 3 – Monitoring (Quarterly & 6 Monthly – No Limits apply)**

EPL ID	Pollutant	Units of Measure	Monitoring Frequency	No. of Samples for the Period	Date Sampled	Date Obtained	Min Value	Mean Value	Median Value	Max or Only Value
9	Conductivity	ms/cm	6 monthly	1	22/03/2018	-	-	-	-	3,360
	Lead	mg/L		1	22/03/2018	-	-	-	-	0.038
	pH	pH		1	22/03/2018	-	-	-	-	7.9
	Standing Water Level	metres		1	22/03/2018	-	-	-	-	7.48
10	Conductivity	ms/cm	6 monthly	1	22/03/2018	-	-	-	-	498
	Lead	mg/L		1	22/03/2018	-	-	-	-	0.01
	pH	pH		1	22/03/2018	-	-	-	-	7.3
	Standing Water Level	metres		1	22/03/2018	-	-	-	-	5.02
11	Conductivity	ms/cm	6 monthly	0	-	-	-	-	-	-
	Lead	mg/L		0	-	-	-	-	-	-
	pH	pH		0	-	-	-	-	-	-
	Standing Water Level	metres		0	-	-	-	-	-	-
12	Conductivity	ms/cm	6 monthly	1	22/03/2018	-	-	-	-	4,470
	Lead	mg/L		1	22/03/2018	-	-	-	-	0.013
	pH	pH		1	22/03/2018	-	-	-	-	7.4
	Standing Water Level	metres		1	22/03/2018	-	-	-	-	9.7
13	Conductivity	ms/cm	Quarterly	0	-	-	-	-	-	-
	Oil & Grease	mg/L		0	-	-	-	-	-	-
	pH	pH		0	-	-	-	-	-	-
	TSS	mg/L		0	-	-	-	-	-	-



**Table 4.2 – Quarterly Monitoring (Noise – LAeq,15min Limits Apply [35dBA])**

*Extract from Global Acoustics Quarterly report*



Table 4.2 compares measured L<sub>Aeq,15minute</sub> levels from TCM with project approval and EPL criterion.

Table 4.2: L<sub>Aeq,15minute</sub> GENERATED BY TCM AGAINST PROJECT APPROVAL/EPL CRITERION – QUARTER 1 2018

Location	Start Date and Time	Wind Speed m/s	Stability Class <sup>2</sup>	VTG °C per 100m	Criterion dB	Criterion Applies? <sup>1,6</sup>	TCM L <sub>Aeq,15min</sub> dB <sup>3,4</sup>	Exceedance <sup>5</sup>
Day								
TN2	12/03/2018 16:23	3.0	B	-1.8	Nil	Yes	<25	Nil
TN2	12/03/2018 16:38	3.4	C	-1.6	Nil	No	NM	NA
TN2	12/03/2018 16:53	4.5	C	-1.6	Nil	No	NM	NA
TN2	12/03/2018 17:08	5.0	C	-1.6	Nil	No	NM	NA
TN2	12/03/2018 17:23	5.1	D	-1.0	Nil	No	NM	NA
TN2	12/03/2018 17:38	3.7	C	-1.6	Nil	No	NM	NA
TN2	13/03/2018 11:03	1.4	A	-2.0	Nil	Yes	<25	Nil
TN2	13/03/2018 11:18	2.6	B	-1.8	Nil	Yes	<25	Nil
TN2	13/03/2018 11:33	1.1	B	-1.8	Nil	Yes	<25	Nil
TN2	13/03/2018 11:53	1.2	A	-2.0	Nil	Yes	<25	Nil
TN2	13/03/2018 12:10	2.0	A	-2.0	Nil	Yes	<25	Nil
TN2	13/03/2018 12:25	1.5	A	-2.0	Nil	Yes	<25	Nil
TN2	14/03/2018 10:16	2.4	A	-2.0	Nil	Yes	<20	Nil
TN2	14/03/2018 10:32	1.8	A	-2.0	Nil	Yes	<20	Nil
TN2	14/03/2018 10:47	1.1	A	-2.0	Nil	Yes	IA	Nil
TN2	14/03/2018 11:02	1.9	A	-2.0	Nil	Yes	<20	Nil
TN2	14/03/2018 11:18	1.8	A	-2.0	Nil	Yes	<20	Nil
TN2	14/03/2018 11:33	1.6	A	-2.0	Nil	Yes	<20	Nil
TN2	15/03/2018 11:16	1.7	A	-2.0	Nil	Yes	<25	Nil
TN2	15/03/2018 11:31	1.9	A	-2.0	Nil	Yes	<25	Nil
TN2	15/03/2018 11:46	2.5	A	-2.0	Nil	Yes	<25	Nil
TN2	15/03/2018 12:01	2.6	A	-2.0	Nil	Yes	<25	Nil
TN2	15/03/2018 12:16	2.0	A	-2.0	Nil	Yes	<25	Nil
TN2	15/03/2018 12:32	1.6	A	-2.0	Nil	Yes	<25	Nil
TN3	12/03/2018 14:31	2.3	A	-2.0	35	Yes	IA	Nil
TN3	12/03/2018 14:46	2.0	A	-2.0	35	Yes	IA	Nil
TN3	12/03/2018 15:01	1.7	A	-2.0	35	Yes	IA	Nil
TN3	12/03/2018 15:16	3.0	A	-2.0	35	Yes	IA	Nil
TN3	12/03/2018 15:31	1.9	A	-2.0	35	Yes	IA	Nil
TN3	12/03/2018 15:46	2.2	A	-2.0	35	Yes	IA	Nil
TN3	13/03/2018 09:53	0.8	A	-2.0	35	Yes	<25	Nil
TN3	13/03/2018 10:08	1.6	A	-2.0	35	Yes	IA	Nil

Location	Start Date and Time	Wind Speed m/s	Stability Class <sup>2</sup>	VTG °C per 100m	Criterion dB	Criterion Applies? <sup>2,6</sup>	TCM L <sub>Aeq,15min</sub> dB <sup>3,4</sup>	Exceedance <sup>5</sup>
TN3	13/03/2018 10:23	1.1	A	-2.0	35	Yes	<25	Nil
TN3	13/03/2018 10:38	1.4	A	-2.0	35	Yes	<25	Nil
TN3	13/03/2018 10:53	1.7	A	-2.0	35	Yes	<25	Nil
TN3	13/03/2018 11:08	1.4	A	-2.0	35	Yes	IA	Nil
TN3	14/03/2018 11:05	1.9	A	-2.0	35	Yes	IA	Nil
TN3	14/03/2018 11:20	1.8	A	-2.0	35	Yes	IA	Nil
TN3	14/03/2018 11:35	1.6	A	-2.0	35	Yes	IA	Nil
TN3	14/03/2018 11:50	2.7	A	-2.0	35	Yes	IA	Nil
TN3	14/03/2018 12:05	1.4	A	-2.0	35	Yes	IA	Nil
TN3	14/03/2018 12:20	1.7	A	-2.0	35	Yes	IA	Nil
TN3	15/03/2018 11:20	1.9	A	-2.0	35	Yes	IA	Nil
TN3	15/03/2018 11:35	1.8	A	-2.0	35	Yes	IA	Nil
TN3	15/03/2018 11:52	2.8	B	-1.8	35	Yes	IA	Nil
TN3	15/03/2018 12:07	2.3	A	-2.0	35	Yes	IA	Nil
TN3	15/03/2018 12:22	1.6	A	-2.0	35	Yes	IA	Nil
TN3	15/03/2018 12:37	2.2	A	-2.0	35	Yes	IA	Nil
TN4	12/03/2018 16:26	3.2	B	-1.8	35	No	IA	NA
TN4	12/03/2018 16:44	3.5	C	-1.6	35	No	IA	NA
TN4	12/03/2018 16:59	4.6	C	-1.6	35	No	IA	NA
TN4	12/03/2018 17:14	5.0	C	-1.6	35	No	IA	NA
TN4	12/03/2018 17:29	3.7	B	-1.8	35	No	IA	NA
TN4	12/03/2018 17:44	4.0	C	-1.6	35	No	IA	NA
TN4	13/03/2018 15:25	1.3	A	-2.0	35	Yes	IA	Nil
TN4	13/03/2018 15:40	2.3	A	-2.0	35	Yes	IA	Nil
TN4	13/03/2018 15:55	1.9	A	-2.0	35	Yes	IA	Nil
TN4	13/03/2018 16:10	1.6	A	-2.0	35	Yes	IA	Nil
TN4	13/03/2018 16:25	1.7	A	-2.0	35	Yes	IA	Nil
TN4	13/03/2018 16:40	1.9	A	-2.0	35	Yes	IA	Nil
TN4	14/03/2018 12:55	1.7	A	-2.0	35	Yes	IA	Nil
TN4	14/03/2018 13:10	2.1	A	-2.0	35	Yes	IA	Nil
TN4	14/03/2018 13:25	2.1	A	-2.0	35	Yes	IA	Nil
TN4	14/03/2018 13:40	1.9	A	-2.0	35	Yes	IA	Nil
TN4	14/03/2018 13:55	1.6	A	-2.0	35	Yes	IA	Nil
TN4	14/03/2018 14:10	2.0	A	-2.0	35	Yes	IA	Nil
TN4	15/03/2018 13:25	3.5	D	-1.0	35	No	IA	NA
TN4	15/03/2018 13:40	2.6	A	-2.0	35	Yes	IA	Nil

Location	Start Date and Time	Wind Speed m/s	Stability Class <sup>2</sup>	VTG °C per 100m	Criterion dB	Criterion Applies? <sup>2,6</sup>	TCM LAeq,15min dB <sup>3,4</sup>	Exceedance <sup>5</sup>
TN4	15/03/2018 13:55	1.6	A	-2.0	35	Yes	IA	Nil
TN4	15/03/2018 14:10	1.7	A	-2.0	35	Yes	IA	Nil
TN4	15/03/2018 14:25	2.3	A	-2.0	35	Yes	IA	Nil
TN4	15/03/2018 14:40	1.8	A	-2.0	35	Yes	IA	Nil
<b>Evening</b>								
TN2	12/03/2018 21:36	1.3	D	-1.0	Nil	Yes	IA	Nil
TN2	12/03/2018 21:51	1.3	D	-1.0	Nil	Yes	IA	Nil
TN2	13/03/2018 20:39	1.2	F	3.0	Nil	Yes	20	Nil
TN2	13/03/2018 20:55	2.1	E	0.5	Nil	Yes	<20	Nil
TN2	14/03/2018 19:58	1.1	E	0.5	Nil	Yes	IA	Nil
TN2	14/03/2018 20:14	1.0	E	0.5	Nil	Yes	IA	Nil
TN2	15/03/2018 21:26	1.9	D	-1.0	Nil	Yes	32	Nil
TN2	15/03/2018 21:41	1.4	F	3.0	Nil	Yes	31	Nil
TN3	12/03/2018 18:23	2.9	D	-1.0	35	Yes	IA	Nil
TN3	12/03/2018 18:38	2.1	E	0.5	35	Yes	IA	Nil
TN3	13/03/2018 19:25	0.8	D	-1.0	35	Yes	IA	Nil
TN3	13/03/2018 19:42	0.9	E	0.5	35	Yes	IA	Nil
TN3	14/03/2018 20:45	1.0	D	-1.0	35	Yes	<25	Nil
TN3	14/03/2018 21:00	1.0	F	3.0	35	Yes	26	Nil
TN3	15/03/2018 21:30	1.9	D	-1.0	35	Yes	IA	Nil
TN3	15/03/2018 21:45	1.3	F	3.0	35	Yes	IA	Nil
TN4	12/03/2018 21:25	1.7	D	-1.0	35	Yes	IA	Nil
TN4	12/03/2018 21:41	1.3	D	-1.0	35	Yes	NM	Nil
TN4	13/03/2018 21:15	2.8	D	-1.0	35	Yes	IA	Nil
TN4	13/03/2018 21:31	1.6	D	-1.0	35	Yes	IA	Nil
TN4	14/03/2018 21:30	0.8	D	-1.0	35	Yes	<20	Nil
TN4	14/03/2018 21:45	0.0	G	4.1	35	No	<20	NA
TN4	15/03/2018 20:20	1.2	D	-1.0	35	Yes	IA	Nil
TN4	15/03/2018 20:35	1.3	E	0.5	35	Yes	IA	Nil
<b>Night</b>								
TN2	12/03/2018 22:20	1.6	E	0.5	Nil	Yes	IA	Nil
TN2	12/03/2018 22:35	0.6	E	0.5	Nil	Yes	IA	Nil
TN2	12/03/2018 22:50	0.2	G	4.1	Nil	No	IA	NA
TN2	12/03/2018 23:05	0.4	E	0.5	Nil	Yes	<20	Nil
TN2	13/03/2018 22:00	1.6	F	3.0	Nil	Yes	<20	Nil

Location	Start Date and Time	Wind Speed m/s	Stability Class <sup>2</sup>	VTG °C per 100m	Criterion dB	Criterion Applies? <sup>1,6</sup>	TCM L <sub>Aeq,15min</sub> dB <sup>3,4</sup>	Exceedance <sup>5</sup>
TN2	13/03/2018 22:15	2.7	D	-1.0	Nil	Yes	NM	Nil
TN2	13/03/2018 22:31	2.2	F	3.0	Nil	No	<20	NA
TN2	13/03/2018 22:46	2.2	F	3.0	Nil	No	<20	NA
TN2	14/03/2018 23:25	0.6	D	-1.0	Nil	Yes	NM	Nil
TN2	14/03/2018 23:42	0.2	D	-1.0	Nil	Yes	NM	Nil
TN2	14/03/2018 23:57	0.2	E	0.5	Nil	Yes	NM	Nil
TN2	15/03/2018 00:14	0.5	F	3.0	Nil	Yes	NM	Nil
TN2	15/03/2018 22:00	1.2	F	3.0	Nil	Yes	<25	Nil
TN2	15/03/2018 22:15	0.8	F	3.0	Nil	Yes	<25	Nil
TN2	15/03/2018 22:31	1.1	F	3.0	Nil	Yes	<25	Nil
TN2	15/03/2018 22:46	0.6	F	3.0	Nil	Yes	<25	Nil
TN3	13/03/2018 00:01	1.0	F	3.0	35	Yes	28	Nil
TN3	13/03/2018 00:16	0.6	F	3.0	35	Yes	29	Nil
TN3	13/03/2018 00:31	0.5	F	3.0	35	Yes	30	Nil
TN3	13/03/2018 00:46	1.1	F	3.0	35	Yes	30	Nil
TN3	13/03/2018 23:20	2.3	D	-1.0	35	Yes	<25	Nil
TN3	13/03/2018 23:40	1.8	D	-1.0	35	Yes	<25	Nil
TN3	13/03/2018 23:59	4.5	D	-1.0	35	No	25	NA
TN3	14/03/2018 00:20	5.1	D	-1.0	35	No	<25	NA
TN3	14/03/2018 23:40	0.2	D	-1.0	35	Yes	<30	Nil
TN3	14/03/2018 23:57	0.2	E	0.5	35	Yes	<30	Nil
TN3	15/03/2018 00:15	0.5	F	3.0	35	Yes	NM	Nil
TN3	15/03/2018 00:30	1.7	E	0.5	35	Yes	NM	Nil
TN3	15/03/2018 22:16	0.8	F	3.0	35	Yes	IA	Nil
TN3	15/03/2018 22:33	1.2	F	3.0	35	Yes	IA	Nil
TN3	15/03/2018 22:49	0.5	F	3.0	35	Yes	IA	Nil
TN3	15/03/2018 23:04	1.0	D	-1.0	35	Yes	IA	Nil
TN4	12/03/2018 22:00	1.4	D	-1.0	35	Yes	NM	Nil
TN4	12/03/2018 22:17	1.7	E	0.5	35	Yes	IA	Nil
TN4	12/03/2018 22:35	0.6	E	0.5	35	Yes	NM	Nil
TN4	12/03/2018 22:50	0.2	G	4.1	35	No	NM	NA
TN4	13/03/2018 22:00	1.6	F	3.0	35	Yes	<30	Nil
TN4	13/03/2018 22:15	2.7	D	-1.0	35	Yes	NM	Nil
TN4	13/03/2018 22:30	2.2	F	3.0	35	No	IA	NA
TN4	13/03/2018 22:45	2.2	F	3.0	35	No	IA	NA
TN4	14/03/2018 22:00	0.7	E	0.5	35	Yes	<25	Nil

Location	Start Date and Time	Wind Speed m/s	Stability Class <sup>2</sup>	VTG °C per 100m	Criterion dB	Criterion Applies? <sup>1,6</sup>	TCM LAeq,15min dB <sup>3,4</sup>	Exceedance <sup>5</sup>
TN4	14/03/2018 22:15	0.9	F	3.0	35	Yes	<25	Nil
TN4	14/03/2018 22:30	0.7	F	3.0	35	Yes	<25	Nil
TN4	14/03/2018 22:45	0.5	D	-1.0	35	Yes	<25	Nil
TN4	15/03/2018 23:30	0.9	F	3.0	35	Yes	<20	Nil
TN4	15/03/2018 23:49	1.2	F	3.0	35	Yes	<20	Nil
TN4	16/03/2018 00:06	1.0	F	3.0	35	Yes	IA	Nil
TN4	16/03/2018 00:22	0.9	F	3.0	35	Yes	IA	Nil

Notes:

1. Criterion may or may not apply due to rounding of meteorological data values;
2. Calculated stability class data (as per requirements in the EPL);
3. Estimated or measured LAeq,15minute attributed to TCM;
4. Bold results in red are possible exceedances of relevant criteria;
5. NA in exceedance column indicates atmospheric conditions outside those specified in project approval and EPL, therefore criterion does not apply; and
6. Noise emission limits do not apply during wind speeds greater than 3 metres per second (at a height of 10 metres), stability category F temperature conditions and wind speeds greater than 2 m/s at 10m above ground level; or stability category G temperature inversion conditions.



**Table 4.3 - Quarterly Monitoring (Noise – LA1,1min Limits Apply [45dBA])**

*Extract from Global Acoustics Quarterly Report*

Table 4.3 compares measured  $L_{A1,1\text{minute}}$  levels from TCM with project approval and EPL criterion.

Table 4.3:  $L_{A1,1\text{minute}}$  GENERATED BY TCM AGAINST PROJECT APPROVAL/EPL CRITERION – QUARTER 1 2018

Location	Start Date and Time	Wind Speed m/s	Stability Class <sup>2</sup>	VTG °C per 100m	Criterion dB	Criterion Applies? <sup>1,6</sup>	TCM $L_{A1,1\text{min}}$ dB <sup>3,4</sup>	Exceedance <sup>5</sup>
TN2	12/03/2018 22:20	1.6	E	0.5	Nil	Yes	IA	Nil
TN2	12/03/2018 22:35	0.6	E	0.5	Nil	Yes	IA	Nil
TN2	12/03/2018 22:50	0.2	G	4.1	Nil	No	IA	NA
TN2	12/03/2018 23:05	0.4	E	0.5	Nil	Yes	<20	Nil
TN2	13/03/2018 22:00	1.6	F	3.0	Nil	Yes	<20	Nil
TN2	13/03/2018 22:15	2.7	D	-1.0	Nil	Yes	NM	Nil
TN2	13/03/2018 22:31	2.2	F	3.0	Nil	No	<20	NA
TN2	13/03/2018 22:46	2.2	F	3.0	Nil	No	<20	NA
TN2	14/03/2018 23:25	0.6	D	-1.0	Nil	Yes	NM	Nil
TN2	14/03/2018 23:42	0.2	D	-1.0	Nil	Yes	NM	Nil
TN2	14/03/2018 23:57	0.2	E	0.5	Nil	Yes	NM	Nil
TN2	15/03/2018 00:14	0.5	F	3.0	Nil	Yes	NM	Nil
TN2	15/03/2018 22:00	1.2	F	3.0	Nil	Yes	30	Nil
TN2	15/03/2018 22:15	0.8	F	3.0	Nil	Yes	32	Nil
TN2	15/03/2018 22:31	1.1	F	3.0	Nil	Yes	<25	Nil
TN2	15/03/2018 22:46	0.6	F	3.0	Nil	Yes	38	Nil
TN3	13/03/2018 00:01	1.0	F	3.0	45	Yes	33	Nil
TN3	13/03/2018 00:16	0.6	F	3.0	45	Yes	38	Nil
TN3	13/03/2018 00:31	0.5	F	3.0	45	Yes	39	Nil
TN3	13/03/2018 00:46	1.1	F	3.0	45	Yes	38	Nil
TN3	13/03/2018 23:20	2.3	D	-1.0	45	Yes	32	Nil
TN3	13/03/2018 23:40	1.8	D	-1.0	45	Yes	35	Nil
TN3	13/03/2018 23:59	4.5	D	-1.0	45	No	31	NA
TN3	14/03/2018 00:20	5.1	D	-1.0	45	No	30	NA
TN3	14/03/2018 23:40	0.2	D	-1.0	45	Yes	<30	Nil
TN3	14/03/2018 23:57	0.2	E	0.5	45	Yes	35	Nil
TN3	15/03/2018 00:15	0.5	F	3.0	45	Yes	NM	Nil
TN3	15/03/2018 00:30	1.7	E	0.5	45	Yes	NM	Nil
TN3	15/03/2018 22:16	0.8	F	3.0	45	Yes	IA	Nil
TN3	15/03/2018 22:33	1.2	F	3.0	45	Yes	IA	Nil
TN3	15/03/2018 22:49	0.5	F	3.0	45	Yes	IA	Nil
TN3	15/03/2018 23:04	1.0	D	-1.0	45	Yes	IA	Nil
TN4	12/03/2018 22:00	1.4	D	-1.0	45	Yes	NM	Nil
TN4	12/03/2018 22:17	1.7	E	0.5	45	Yes	IA	Nil



Location	Start Date and Time	Wind Speed m/s	Stability Class <sup>2</sup>	VTG °C per 100m	Criterion dB	Criterion Applies? <sup>1,6</sup>	TCM LA1,1min dB <sup>3,4</sup>	Exceedance <sup>5</sup>
TN4	12/03/2018 22:35	0.6	E	0.5	45	Yes	NM	Nil
TN4	12/03/2018 22:50	0.2	G	4.1	45	No	NM	NA
TN4	13/03/2018 22:00	1.6	F	3.0	45	Yes	33	Nil
TN4	13/03/2018 22:15	2.7	D	-1.0	45	Yes	33	Nil
TN4	13/03/2018 22:30	2.2	F	3.0	45	No	IA	NA
TN4	13/03/2018 22:45	2.2	F	3.0	45	No	IA	NA
TN4	14/03/2018 22:00	0.7	E	0.5	45	Yes	33	Nil
TN4	14/03/2018 22:15	0.9	F	3.0	45	Yes	27	Nil
TN4	14/03/2018 22:30	0.7	F	3.0	45	Yes	27	Nil
TN4	14/03/2018 22:45	0.5	D	-1.0	45	Yes	26	Nil
TN4	15/03/2018 23:30	0.9	F	3.0	45	Yes	<20	Nil
TN4	15/03/2018 23:49	1.2	F	3.0	45	Yes	<20	Nil
TN4	16/03/2018 00:06	1.0	F	3.0	45	Yes	IA	Nil
TN4	16/03/2018 00:22	0.9	F	3.0	45	Yes	IA	Nil

Notes:

1. Criterion may or may not apply due to rounding of meteorological data values;
2. Calculated stability class data (as per requirements in the EPL);
3. Estimated or measured LA1,1minute attributed to TCM;
4. Bold results in red are possible exceedances of relevant criteria;
5. NA in exceedance column indicates atmospheric conditions outside those specified in project approval and EPL, therefore criterion does not apply; and
6. Noise emission limits do not apply during wind speeds greater than 3 metres per second (at a height of 10 metres), stability category F temperature conditions and wind speeds greater than 2m/s at 10m above ground level, or stability category G temperature inversion conditions.



**Table 5 – Monthly Monitoring (Blasts – Limits Apply)**

Location	Parameter	Units of Measure	Frequency	No. of Blasts for the Month	Average Value	Max Value	100%ile Limit	(Potential) Non-compliance /breach	Date Obtained
Tarrawonga	Blast Noise	dB (Lin Peak)	Every Blast	6	97.4	108.1	120	Nil	4/04/2018
	Blast Vibration	mm/s	Every Blast	6	0.26	0.45	10	Nil	4/04/2018

Figure 1 – EPL 12365 Onsite Monitoring Locations

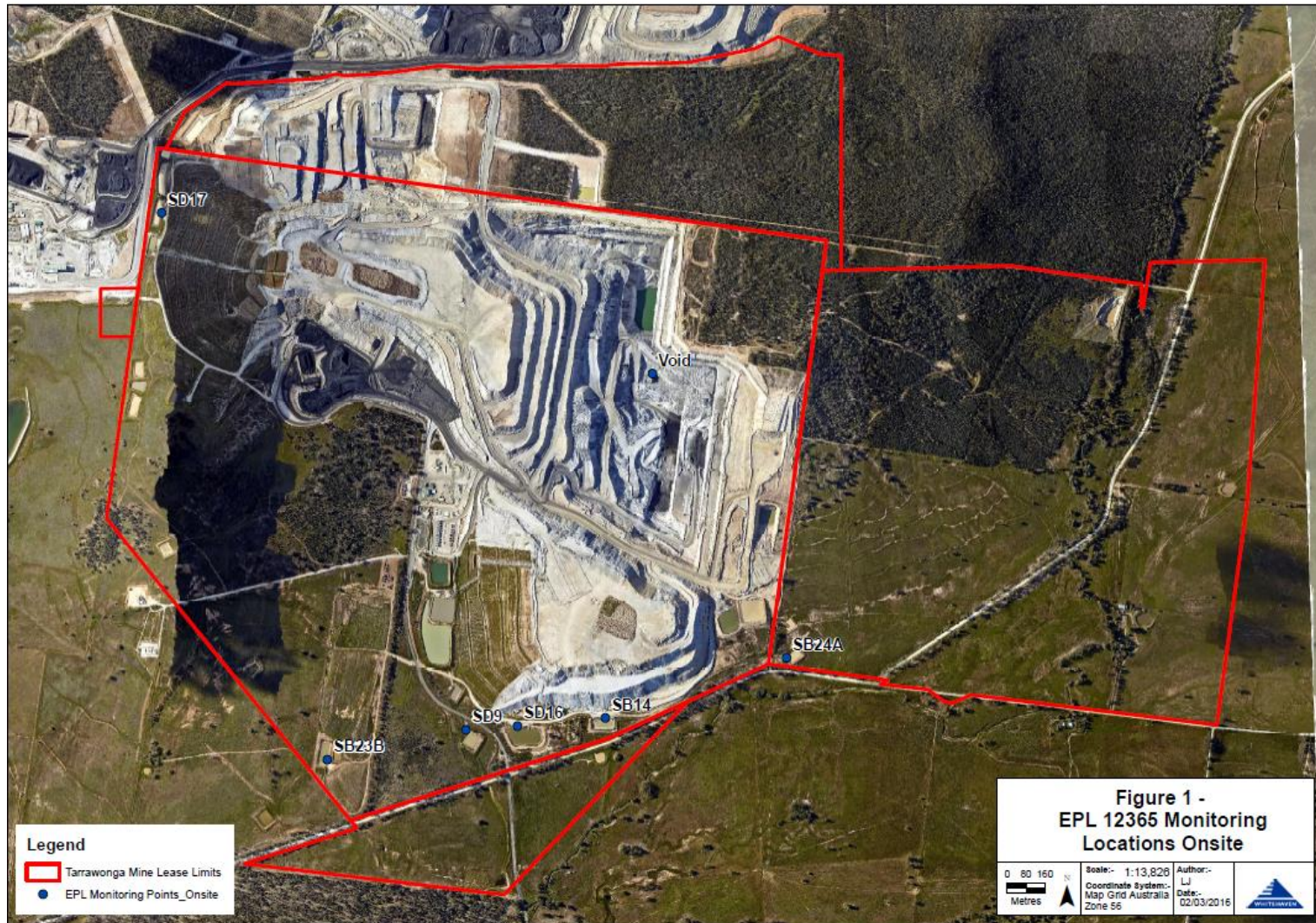
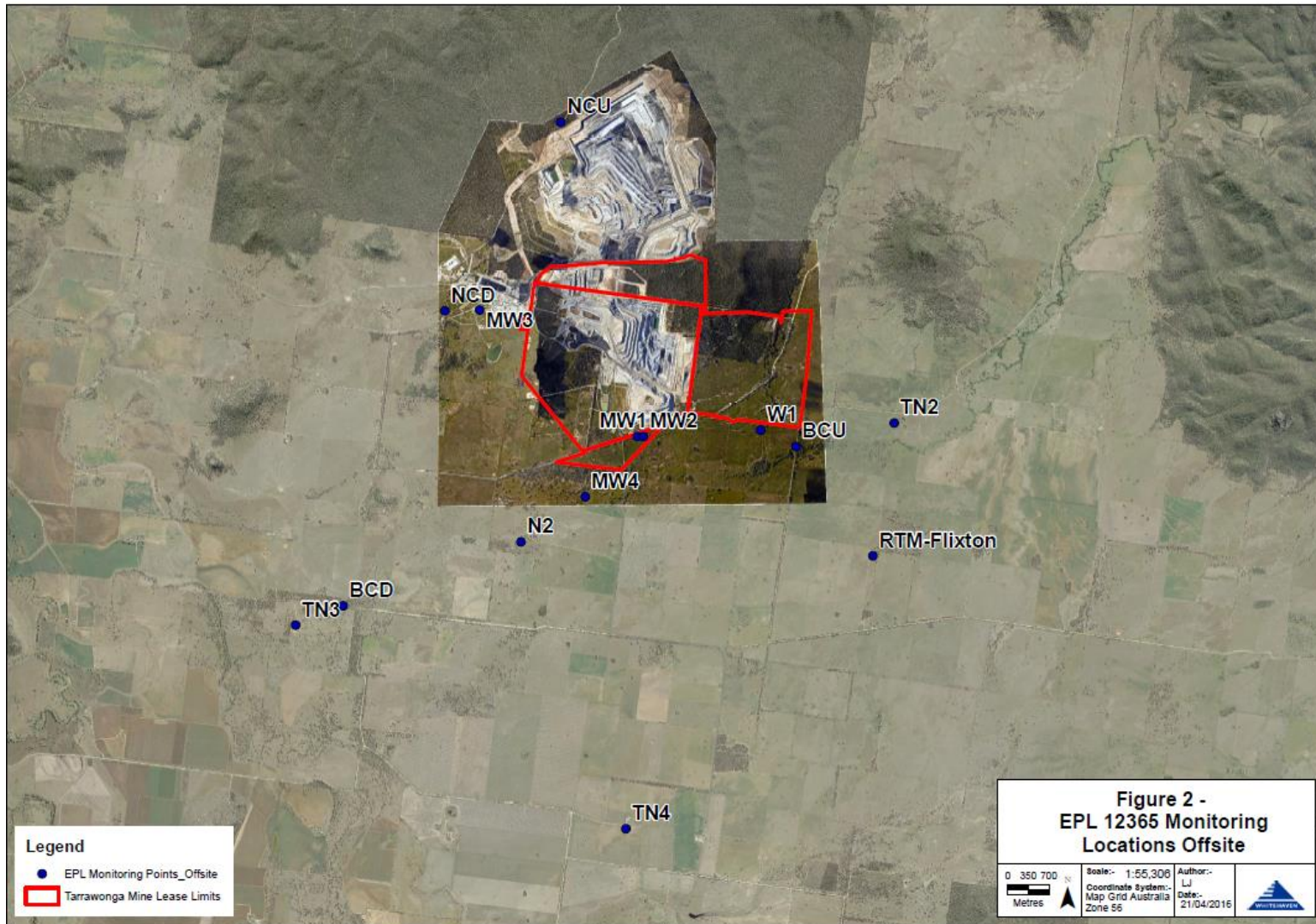




Figure 2 – EPL 12365 Offsite Monitoring Locations





## TARRAWONGA COAL MINE – MONTHLY MONITORING SUMMARY

### Site Information

**EPL No:** 12365

**EPA Website Link:** <http://www.epa.nsw.gov.au/prpoeoapp/ViewPOEOLicence.aspx?DOCID=55113&SYSUID=1&LICID=12365>

**Licensee:** Tarrawonga Coal Pty Ltd

**Licensee Address:** Tarrawonga Coal Mine, 469 Goonbri Road, BOGGABRI NSW 2382

**EPL Monitoring Points:** See Figure 1 and 2 below

**Sampling Period:** April 2018

**Obtained Date:** 09/05/2018

**Publication Date:** 09/05/2018

**Table 1 - No Pollutant Limits Apply**

EPL ID	Pollutant	Units of Measure	Monitoring Frequency	No. of Samples for the Month	Date Sampled	Date Obtained	Min Value	Mean Value	Median Value	Max or Only Value
5	TSS	mg/L	Upon discharge	0	-	-	-	-	-	-
	Conductivity	ms/cm		0	-	-	-	-	-	-
	Oil & Grease	mg/L		0	-	-	-	-	-	-
	pH	pH		0	-	-	-	-	-	-
6	TSS	mg/L	Upon discharge	0	-	-	-	-	-	-
	Conductivity	ms/cm		0	-	-	-	-	-	-
	Oil & Grease	mg/L		0	-	-	-	-	-	-
	pH	pH		0	-	-	-	-	-	-
7	TSS	mg/L	Upon discharge	0	-	-	-	-	-	-
	Conductivity	ms/cm		0	-	-	-	-	-	-
	Oil & Grease	mg/L		0	-	-	-	-	-	-
	pH	pH		0	-	-	-	-	-	-
8	TSS	mg/L	Upon discharge	0	-	-	-	-	-	-
	Conductivity	ms/cm		0	-	-	-	-	-	-
	Oil & Grease	mg/L		0	-	-	-	-	-	-
	pH	pH		0	-	-	-	-	-	-



**Table 2 - Pollutant Limits Apply**

EPL ID	Pollutant	Units of Measure	Monitoring Frequency	No. of Samples for the Month	Date Sampled	Date Obtained	Min Value	Max or Only Value	100%ile Limit	Exceedance (Yes/No)	Comments
1	TSS	mg/L	Upon discharge	0	-	-	-	-		-	-
	Oil & Grease	mg/L		0	-	-	-	-		-	-
	pH	pH		0	-	-	-	-		-	-
2	TSS	mg/L	Upon discharge	0	-	-	-	-		-	-
	Oil & Grease	mg/L		0	-	-	-	-		-	-
	pH	pH		0	-	-	-	-		-	-
3	TSS	mg/L	Upon discharge	0	-	-	-	-		-	-
	Oil & Grease	mg/L		0	-	-	-	-		-	-
	pH	pH		0	-	-	-	-		-	-
24	TSS	mg/L	Upon discharge	0	-	-	-	-		-	-
	Oil & Grease	mg/L		0	-	-	-	-		-	-
	pH	pH		0	-	-	-	-		-	-
25	TSS	mg/L	Upon discharge	0	-	-	-	-		-	-
	Oil & Grease	mg/L		0	-	-	-	-		-	-
	pH	pH		0	-	-	-	-		-	-
26	TSS	mg/L	Upon discharge	0	-	-	-	-		-	-
	Oil & Grease	mg/L		0	-	-	-	-		-	-
	pH	pH		0	-	-	-	-		-	-
27	TSS	mg/L	Upon discharge	0	-	-	-	-		-	-
	Oil & Grease	mg/L		0	-	-	-	-		-	-
	pH	pH		0	-	-	-	-		-	-



**Table 3 – Monitoring (Quarterly & 6 Monthly – No Limits apply)**

EPL ID	Pollutant	Units of Measure	Monitoring Frequency	No. of Samples for the Period	Date Sampled	Date Obtained	Min Value	Mean Value	Median Value	Max or Only Value
9	Conductivity	ms/cm	6 monthly	0	-	-	-	-		
	Lead	mg/L		0	-	-	-	-		
	pH	pH		0	-	-	-	-		
	Standing Water Level	metres		0	-	-	-	-		
10	Conductivity	ms/cm	6 monthly	0	-	-	-	-		
	Lead	mg/L		0	-	-	-	-		
	pH	pH		0	-	-	-	-		
	Standing Water Level	metres		0	-	-	-	-		
11	Conductivity	ms/cm	6 monthly	0	-	-	-	-		
	Lead	mg/L		0	-	-	-	-		
	pH	pH		0	-	-	-	-		
	Standing Water Level	metres		0	-	-	-	-		
12	Conductivity	ms/cm	6 monthly	0	-	-	-	-		
	Lead	mg/L		0	-	-	-	-		
	pH	pH		0	-	-	-	-		
	Standing Water Level	metres		0	-	-	-	-		
13	Conductivity	ms/cm	Quarterly	0	-	-	-	-	-	-
	Oil & Grease	mg/L		0	-	-	-	-	-	-
	pH	pH		0	-	-	-	-	-	-
	TSS	mg/L		0	-	-	-	-	-	-





**Table 4 – Quarterly Monitoring (Noise – Limits Apply)**

EPL ID	Date	Start Time	Measurement period	Measured Levels – dB(A) L <sub>eq</sub> 15min Day	Measured Levels – dB(A) L <sub>eq</sub> 15min Evening	Measured Levels – dB(A) L <sub>eq</sub> 15min Night	Measured Levels – dB(A) L <sub>A1</sub> (1 min) Night	Limit	Wind Speed (m/s)	Stability Class	Compliant (Yes/No)	Date Obtained
TN2	-	-	-	-				-	-	-	-	No Sampling
	-	-	-		-			-	-	-	-	
	-	-	-			-		-	-	-	-	
	-	-	-				-	-	-	-	-	



**Table 5 – Quarterly Monitoring (Noise – Limits Apply)**

EPL ID	Date	Start Time	Measurement period	Measured Levels – dB(A) L <sub>eq</sub> 15min Day	Measured Levels – dB(A) L <sub>eq</sub> 15min Evening	Measured Levels – dB(A) L <sub>eq</sub> 15min Night	Measured Levels – dB(A) L <sub>A1</sub> (1 min) Night	Limit	Wind Speed (m/s)	Stability Class	Compliant (Yes/No)	Date Obtained
TN3	-	-	-	-				-	-	-	-	No Sampling
	-	-	-		-			-	-	-	-	
	-	-	-			-		-	-	-	-	
	-	-	-				-	-	-	-	-	



**Table 6 – Quarterly Monitoring (Noise – Limits Apply)**

EPL ID	Date	Start Time	Measurement period	Measured Levels – dB(A) L <sub>eq</sub> 15min Day	Measured Levels – dB(A) L <sub>eq</sub> 15min Evening	Measured Levels – dB(A) L <sub>eq</sub> 15min Night	Measured Levels – dB(A) L <sub>A1</sub> (1 min) Night	Limit	Wind Speed (m/s)	Stability Class	Compliant (Yes/No)	Date Obtained
TN4	-	-	-	-	-	-	-	-	-	-	-	No Sampling
	-	-	-	-	-	-	-	-	-	-	-	
	-	-	-	-	-	-	-	-	-	-	-	
	-	-	-	-	-	-	-	-	-	-	-	



**Table 7 – Monthly Monitoring (Blasts – Limits Apply)**

<b>Location</b>	<b>Parameter</b>	<b>Units of Measure</b>	<b>Frequency</b>	<b>No. of Blasts for the Month</b>	<b>Average Value</b>	<b>Max Value</b>	<b>100%ile Limit</b>	<b>(Potential) Non-compliance /breach</b>	<b>Date Obtained</b>
<b>Tarrawonga</b>	<b>Blast Noise</b>	<b>dB (Lin Peak)</b>	<b>Every Blast</b>	5	97.1	105.1	120	<b>Nil</b>	9/05/2018
	<b>Blast Vibration</b>	<b>mm/s</b>	<b>Every Blast</b>	5	0.44	1.04	10	<b>Nil</b>	9/05/2018

Figure 1 – EPL 12365 Onsite Monitoring Locations

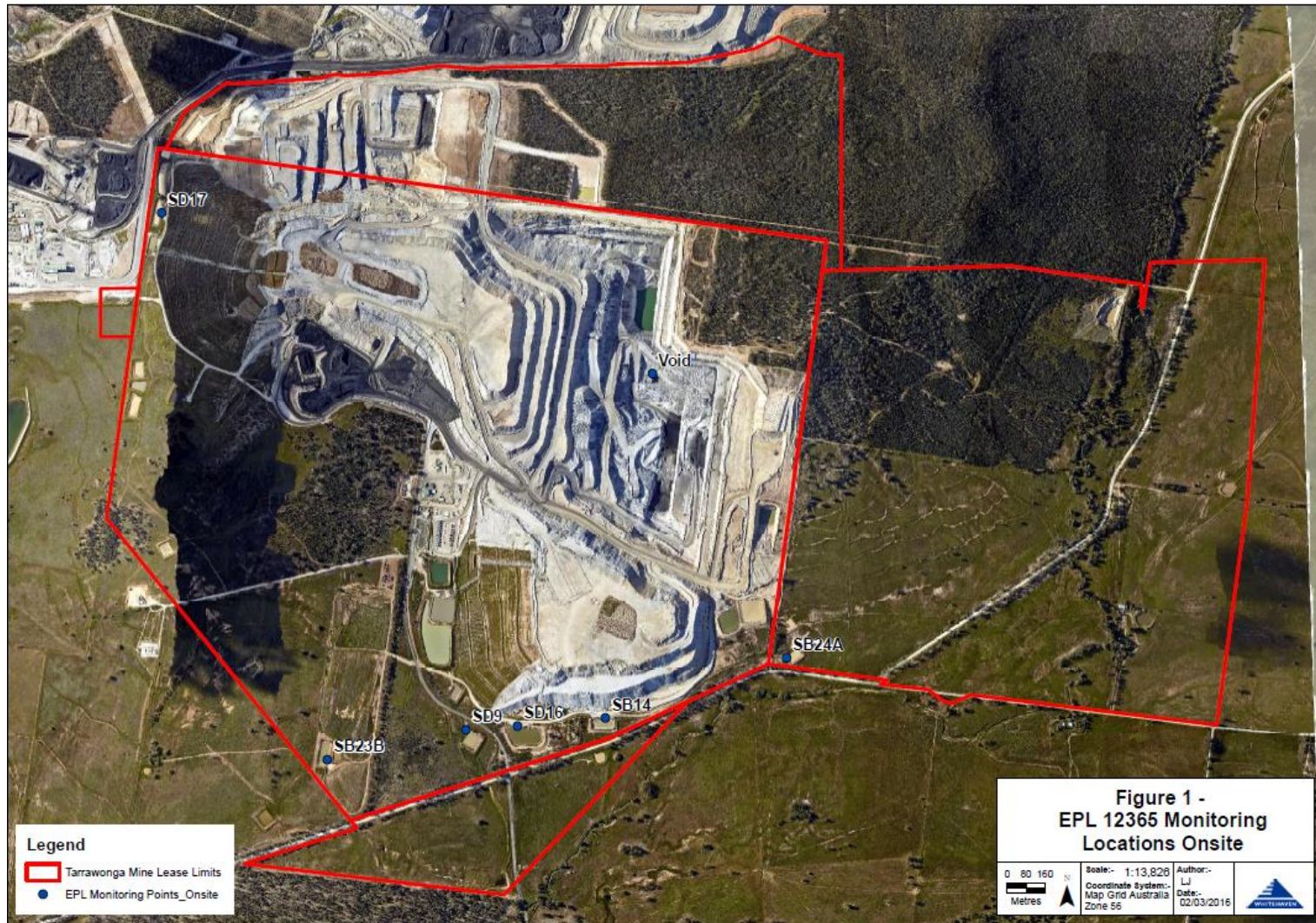
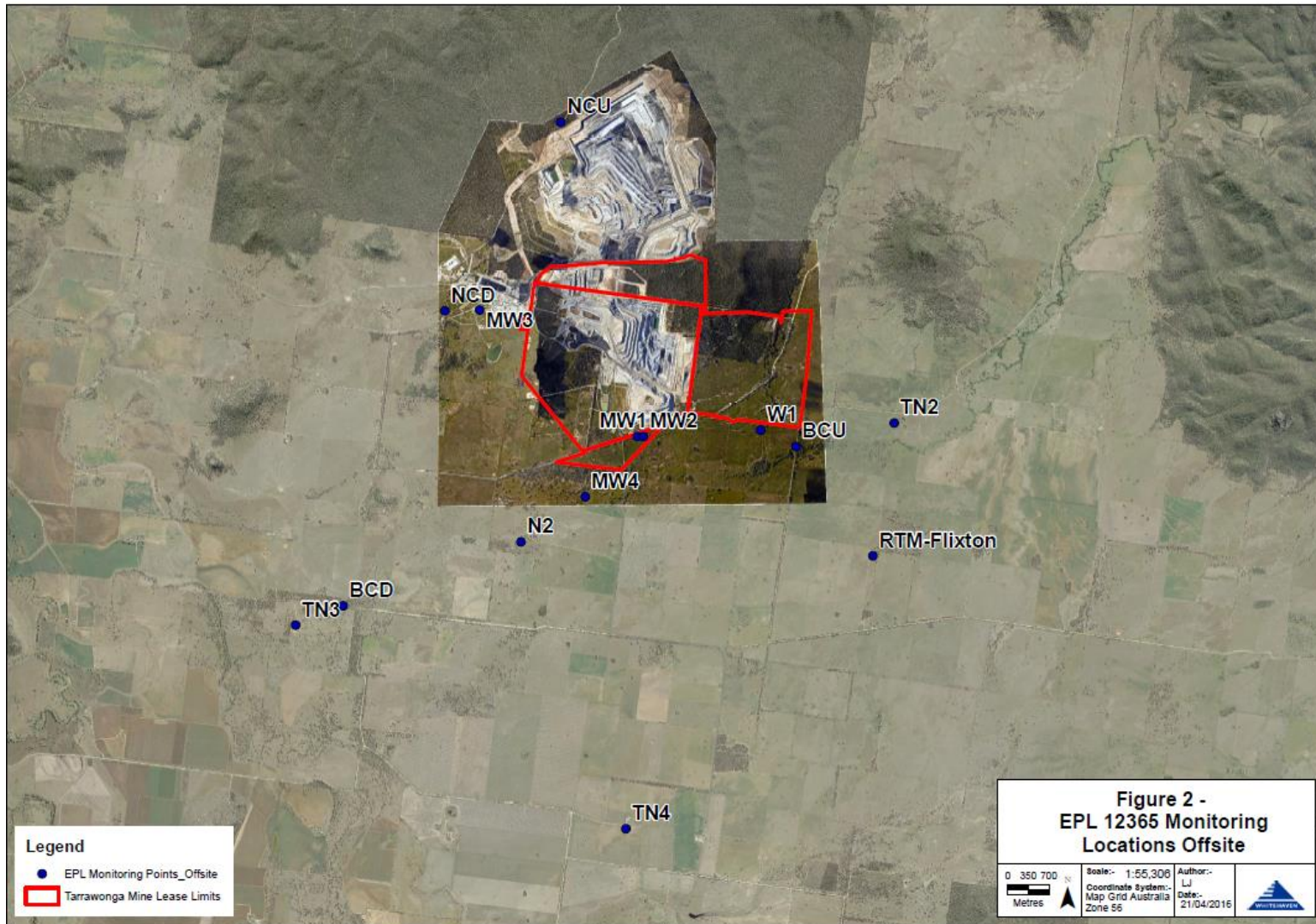




Figure 2 – EPL 12365 Offsite Monitoring Locations



## TARRAWONGA COAL MINE – MONTHLY MONITORING SUMMARY

### Site Information

**EPL No:** 12365

**EPA Website Link:** <http://www.epa.nsw.gov.au/prpoeoapp/ViewPOEOLicence.aspx?DOCID=55113&SYSUID=1&LICID=12365>

**Licensee:** Tarrawonga Coal Pty Ltd

**Licensee Address:** Tarrawonga Coal Mine, 469 Goonbri Road, BOGGABRI NSW 2382

**EPL Monitoring Points:** See Figure 1 and 2 below

**Sampling Period:** May 2018

**Obtained Date:** 03/06/2018

**Publication Date:** 03/06/2018

**Table 1 - No Pollutant Limits Apply**

EPL ID	Pollutant	Units of Measure	Monitoring Frequency	No. of Samples for the Month	Date Sampled	Date Obtained	Min Value	Mean Value	Median Value	Max or Only Value
5	TSS	mg/L	Upon discharge	0	-	-	-	-	-	-
	Conductivity	ms/cm		0	-	-	-	-	-	-
	Oil & Grease	mg/L		0	-	-	-	-	-	-
	pH	pH		0	-	-	-	-	-	-
6	TSS	mg/L	Upon discharge	0	-	-	-	-	-	-
	Conductivity	ms/cm		0	-	-	-	-	-	-
	Oil & Grease	mg/L		0	-	-	-	-	-	-
	pH	pH		0	-	-	-	-	-	-
7	TSS	mg/L	Upon discharge	0	-	-	-	-	-	-
	Conductivity	ms/cm		0	-	-	-	-	-	-
	Oil & Grease	mg/L		0	-	-	-	-	-	-
	pH	pH		0	-	-	-	-	-	-
8	TSS	mg/L	Upon discharge	0	-	-	-	-	-	-
	Conductivity	ms/cm		0	-	-	-	-	-	-
	Oil & Grease	mg/L		0	-	-	-	-	-	-
	pH	pH		0	-	-	-	-	-	-

Table 2 - Pollutant Limits Apply

EPL ID	Pollutant	Units of Measure	Monitoring Frequency	No. of Samples for the Month	Date Sampled	Date Obtained	Min Value	Max or Only Value	100%ile Limit	Exceedance (Yes/No)	Comments
1	TSS	mg/L	Upon discharge	0	-	-	-	-		-	-
	Oil & Grease	mg/L		0	-	-	-	-		-	-
	pH	pH		0	-	-	-	-		-	-
2	TSS	mg/L	Upon discharge	0	-	-	-	-		-	-
	Oil & Grease	mg/L		0	-	-	-	-		-	-
	pH	pH		0	-	-	-	-		-	-
3	TSS	mg/L	Upon discharge	0	-	-	-	-		-	-
	Oil & Grease	mg/L		0	-	-	-	-		-	-
	pH	pH		0	-	-	-	-		-	-
24	TSS	mg/L	Upon discharge	0	-	-	-	-		-	-
	Oil & Grease	mg/L		0	-	-	-	-		-	-
	pH	pH		0	-	-	-	-		-	-
25	TSS	mg/L	Upon discharge	0	-	-	-	-		-	-
	Oil & Grease	mg/L		0	-	-	-	-		-	-
	pH	pH		0	-	-	-	-		-	-
26	TSS	mg/L	Upon discharge	0	-	-	-	-		-	-
	Oil & Grease	mg/L		0	-	-	-	-		-	-
	pH	pH		0	-	-	-	-		-	-
27	TSS	mg/L	Upon discharge	0	-	-	-	-		-	-
	Oil & Grease	mg/L		0	-	-	-	-		-	-
	pH	pH		0	-	-	-	-		-	-



**Table 3 – Monitoring (Quarterly & 6 Monthly – No Limits apply)**

<b>EPL ID</b>	<b>Pollutant</b>	<b>Units of Measure</b>	<b>Monitoring Frequency</b>	<b>No. of Samples for the Period</b>	<b>Date Sampled</b>	<b>Date Obtained</b>	<b>Min Value</b>	<b>Mean Value</b>	<b>Median Value</b>	<b>Max or Only Value</b>
9	Conductivity	ms/cm	6 monthly	0	-	-	-	-		
	Lead	mg/L		0	-	-	-	-		
	pH	pH		0	-	-	-	-		
	Standing Water Level	metres		0	-	-	-	-		
10	Conductivity	ms/cm	6 monthly	0	-	-	-	-		
	Lead	mg/L		0	-	-	-	-		
	pH	pH		0	-	-	-	-		
	Standing Water Level	metres		0	-	-	-	-		
11	Conductivity	ms/cm	6 monthly	0	-	-	-	-		
	Lead	mg/L		0	-	-	-	-		
	pH	pH		0	-	-	-	-		
	Standing Water Level	metres		0	-	-	-	-		
12	Conductivity	ms/cm	6 monthly	0	-	-	-	-		
	Lead	mg/L		0	-	-	-	-		
	pH	pH		0	-	-	-	-		
	Standing Water Level	metres		0	-	-	-	-		
13	Conductivity	ms/cm	Quarterly	1	22/05/18	30/5/18	-	-	-	3340
	Oil & Grease	mg/L		1	22/05/18	30/5/18	-	-	-	6
	pH	pH		1	22/05/18	30/5/18	-	-	-	8.9
	TSS	mg/L		1	22/05/18	30/5/18	-	-	-	14

**Table 4 – Quarterly Monitoring (Noise – Limits Apply)**

EPL ID	Date	Start Time	Measurement period	Measured Levels – dB(A) L <sub>eq</sub> 15min Day	Measured Levels – dB(A) L <sub>eq</sub> 15min Evening	Measured Levels – dB(A) L <sub>eq</sub> 15min Night	Measured Levels – dB(A) L <sub>A1</sub> (1 min) Night	Limit	Wind Speed (m/s)	Stability Class	Compliant (Yes/No)	Date Obtained
TN2	-	-	-	-				-	-	-	-	No Sampling
	-	-	-		-			-	-	-	-	
	-	-	-			-		-	-	-	-	
	-	-	-				-	-	-	-	-	

**Table 5 – Quarterly Monitoring (Noise – Limits Apply)**

EPL ID	Date	Start Time	Measurement period	Measured Levels – dB(A) L <sub>eq</sub> 15min Day	Measured Levels – dB(A) L <sub>eq</sub> 15min Evening	Measured Levels – dB(A) L <sub>eq</sub> 15min Night	Measured Levels – dB(A) L <sub>A1</sub> (1 min) Night	Limit	Wind Speed (m/s)	Stability Class	Compliant (Yes/No)	Date Obtained
TN3	-	-	-	-				-	-	-	-	No Sampling
	-	-	-		-			-	-	-	-	
	-	-	-			-		-	-	-	-	
	-	-	-				-	-	-	-	-	

**Table 6 – Quarterly Monitoring (Noise – Limits Apply)**

EPL ID	Date	Start Time	Measurement period	Measured Levels – dB(A) L <sub>eq</sub> 15min Day	Measured Levels – dB(A) L <sub>eq</sub> 15min Evening	Measured Levels – dB(A) L <sub>eq</sub> 15min Night	Measured Levels – dB(A) L <sub>A1</sub> (1 min) Night	Limit	Wind Speed (m/s)	Stability Class	Compliance (Yes/No)	Date Obtained
TN4	-	-	-	-				-	-	-	-	No Sampling
	-	-	-		-			-	-	-	-	
	-	-	-			-		-	-	-	-	
	-	-	-				-	-	-	-	-	

**Table 7 – Monthly Monitoring (Blasts – Limits Apply)**

Location	Parameter	Units of Measure	Frequency	No. of Blasts for the Month	Average Value	Max Value	100%ile Limit	(Potential) Non-compliance /breach	Date Obtained
Tarrawonga*	Blast Noise	dB (Lin Peak)	Every Blast	6	99.6	103.2	N/A	N/A	1/06/2018
	Blast Vibration	mm/s	Every Blast	6	0.3	0.77	N/A	N/A	1/06/2018
Coomalgah	Blast Noise	dB (Lin Peak)	Every Blast	6	97.4	101.1	120	Nil	1/06/2018
	Blast Vibration	mm/s	Every Blast	6	0.26	0.56	10	Nil	1/06/2018

*\*Mine owned property – no limit apply*

Figure 1 – EPL 12365 Onsite Monitoring Locations

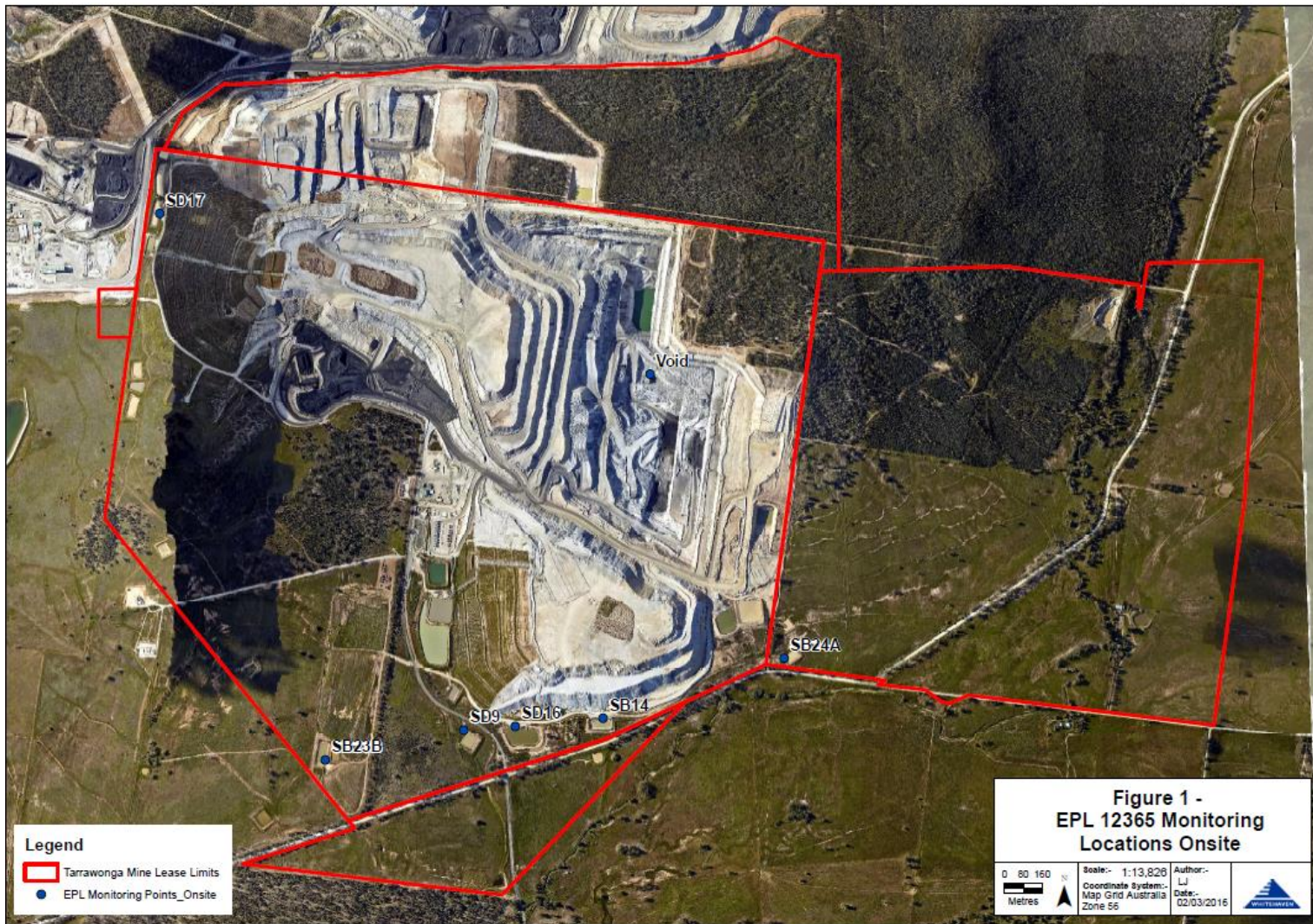
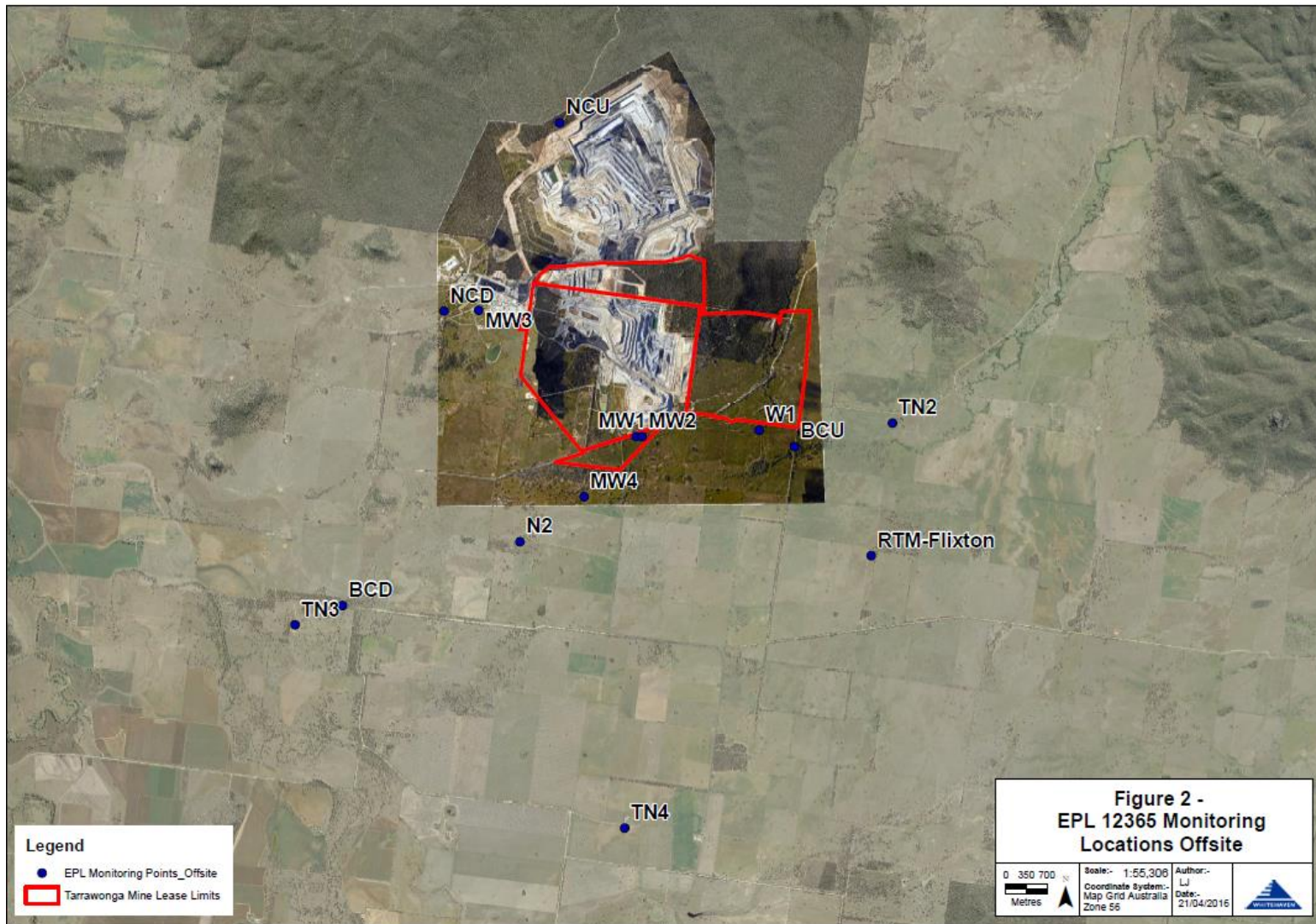




Figure 2 – EPL 12365 Offsite Monitoring Locations



## TARRAWONGA COAL MINE – MONTHLY MONITORING SUMMARY

### Site Information

**EPL No:** 12365

**EPA Website Link:** <http://www.epa.nsw.gov.au/prpoeoapp/ViewPOEOLicence.aspx?DOCID=55113&SYSUID=1&LICID=12365>

**Licensee:** Tarrawonga Coal Pty Ltd

**Licensee Address:** Tarrawonga Coal Mine, 469 Goonbri Road, BOGGABRI NSW 2382

**EPL Monitoring Points:** See Figure 1 and 2 below

**Sampling Period:** June 2018

**Obtained Date:** 06/07/2018

**Publication Date:** 06/07/2018

**Table 1 - No Pollutant Limits Apply**

EPL ID	Pollutant	Units of Measure	Monitoring Frequency	No. of Samples for the Month	Date Sampled	Date Obtained	Min Value	Mean Value	Median Value	Max or Only Value
5	TSS	mg/L	Upon discharge	0	-	-	-	-	-	-
	Conductivity	ms/cm		0	-	-	-	-	-	-
	Oil & Grease	mg/L		0	-	-	-	-	-	-
	pH	pH		0	-	-	-	-	-	-
6	TSS	mg/L	Upon discharge	0	-	-	-	-	-	-
	Conductivity	ms/cm		0	-	-	-	-	-	-
	Oil & Grease	mg/L		0	-	-	-	-	-	-
	pH	pH		0	-	-	-	-	-	-
7	TSS	mg/L	Upon discharge	0	-	-	-	-	-	-
	Conductivity	ms/cm		0	-	-	-	-	-	-
	Oil & Grease	mg/L		0	-	-	-	-	-	-
	pH	pH		0	-	-	-	-	-	-
8	TSS	mg/L	Upon discharge	0	-	-	-	-	-	-
	Conductivity	ms/cm		0	-	-	-	-	-	-
	Oil & Grease	mg/L		0	-	-	-	-	-	-
	pH	pH		0	-	-	-	-	-	-



Table 2 - Pollutant Limits Apply

EPL ID	Pollutant	Units of Measure	Monitoring Frequency	No. of Samples for the Month	Date Sampled	Date Obtained	Min Value	Max or Only Value	100%ile Limit	Exceedance (Yes/No)	Comments
1	TSS	mg/L	Upon discharge	0	-	-	-	-		-	-
	Oil & Grease	mg/L		0	-	-	-	-		-	-
	pH	pH		0	-	-	-	-		-	-
2	TSS	mg/L	Upon discharge	0	-	-	-	-		-	-
	Oil & Grease	mg/L		0	-	-	-	-		-	-
	pH	pH		0	-	-	-	-		-	-
3	TSS	mg/L	Upon discharge	0	-	-	-	-		-	-
	Oil & Grease	mg/L		0	-	-	-	-		-	-
	pH	pH		0	-	-	-	-		-	-
24	TSS	mg/L	Upon discharge	0	-	-	-	-		-	-
	Oil & Grease	mg/L		0	-	-	-	-		-	-
	pH	pH		0	-	-	-	-		-	-
25	TSS	mg/L	Upon discharge	0	-	-	-	-		-	-
	Oil & Grease	mg/L		0	-	-	-	-		-	-
	pH	pH		0	-	-	-	-		-	-
26	TSS	mg/L	Upon discharge	0	-	-	-	-		-	-
	Oil & Grease	mg/L		0	-	-	-	-		-	-
	pH	pH		0	-	-	-	-		-	-
27	TSS	mg/L	Upon discharge	0	-	-	-	-		-	-
	Oil & Grease	mg/L		0	-	-	-	-		-	-
	pH	pH		0	-	-	-	-		-	-

**Table 3 – Monitoring (Quarterly & 6 Monthly – No Limits apply)**

<b>EPL ID</b>	<b>Pollutant</b>	<b>Units of Measure</b>	<b>Monitoring Frequency</b>	<b>No. of Samples for the Period</b>	<b>Date Sampled</b>	<b>Date Obtained</b>	<b>Min Value</b>	<b>Mean Value</b>	<b>Median Value</b>	<b>Max or Only Value</b>
9	Conductivity	ms/cm	6 monthly	0	-	-	-	-		
	Lead	mg/L		0	-	-	-	-		
	pH	pH		0	-	-	-	-		
	Standing Water Level	metres		0	-	-	-	-		
10	Conductivity	ms/cm	6 monthly	0	-	-	-	-		
	Lead	mg/L		0	-	-	-	-		
	pH	pH		0	-	-	-	-		
	Standing Water Level	metres		0	-	-	-	-		
11	Conductivity	ms/cm	6 monthly	0	-	-	-	-		
	Lead	mg/L		0	-	-	-	-		
	pH	pH		0	-	-	-	-		
	Standing Water Level	metres		0	-	-	-	-		
12	Conductivity	ms/cm	6 monthly	0	-	-	-	-		
	Lead	mg/L		0	-	-	-	-		
	pH	pH		0	-	-	-	-		
	Standing Water Level	metres		0	-	-	-	-		
13	Conductivity	ms/cm	Quarterly	0						
	Oil & Grease	mg/L		0						
	pH	pH		0						
	TSS	mg/L		0						

**Table 4 – Quarterly Monitoring (Noise – Limits Apply- Samples taken in June but results available in July 2018)**

EPL ID	Date	Start Time	Measurement period	Measured Levels – dB(A) L <sub>eq</sub> 15min Day	Measured Levels – dB(A) L <sub>eq</sub> 15min Evening	Measured Levels – dB(A) L <sub>eq</sub> 15min Night	Measured Levels – dB(A) L <sub>A1</sub> (1 min) Night	Limit	Wind Speed (m/s)	Stability Class	Compliant (Yes/No)	Date Obtained
TN2	-	-	-	-	-	-	-	-	-	-	-	No Sampling
	-	-	-	-	-	-	-	-	-	-	-	
	-	-	-	-	-	-	-	-	-	-	-	
	-	-	-	-	-	-	-	-	-	-	-	

**Table 5 – Quarterly Monitoring (Noise – Limits Apply)**

EPL ID	Date	Start Time	Measurement period	Measured Levels – dB(A) L <sub>eq</sub> 15min Day	Measured Levels – dB(A) L <sub>eq</sub> 15min Evening	Measured Levels – dB(A) L <sub>eq</sub> 15min Night	Measured Levels – dB(A) L <sub>A1</sub> (1 min) Night	Limit	Wind Speed (m/s)	Stability Class	Compliant (Yes/No)	Date Obtained
TN3	-	-	-	-				-	-	-	-	No Sampling
	-	-	-		-			-	-	-	-	
	-	-	-			-		-	-	-	-	
	-	-	-				-	-	-	-	-	

**Table 6 – Quarterly Monitoring (Noise – Limits Apply)**

EPL ID	Date	Start Time	Measurement period	Measured Levels – dB(A) L <sub>eq</sub> 15min Day	Measured Levels – dB(A) L <sub>eq</sub> 15min Evening	Measured Levels – dB(A) L <sub>eq</sub> 15min Night	Measured Levels – dB(A) L <sub>A1</sub> (1 min) Night	Limit	Wind Speed (m/s)	Stability Class	Compliance (Yes/No)	Date Obtained
TN4	-	-	-	-				-	-	-	-	No Sampling
	-	-	-		-			-	-	-	-	
	-	-	-			-		-	-	-	-	
	-	-	-				-	-	-	-	-	

**Table 7 – Monthly Monitoring (Blasts – Limits Apply)**

Location	Parameter	Units of Measure	Frequency	No. of Blasts for the Month	Average Value	Max Value	100%ile Limit	(Potential) Non-compliance /breach	Date Obtained
Tarrawonga*	Blast Noise	dB (Lin Peak)	Every Blast	5	93.4	102.1	N/A	N/A	07/06/2018
	Blast Vibration	mm/s	Every Blast	5	0.28	0.51	N/A	N/A	01/06/2018
Coomalgah	Blast Noise	dB (Lin Peak)	Every Blast	5	100.4	104.2	120	Nil	07/06/2018
	Blast Vibration	mm/s	Every Blast	5	0.20	0.37	10	Nil	26/06/2018

*\*Mine owned property – no limit apply*

**Table 8- Monthly Monitoring (Dust PM10 – No Limits apply)**

Location	No. of samples required by licence	Lowest sample value	Mean of sample	Highest sample value
“Flixton” property* TEOM (µg/m <sup>3</sup> )	Continuous	4.0	22.1	56.9

*\*Mine owned property – no limit apply*



Figure 1 – EPL 12365 Onsite Monitoring Locations

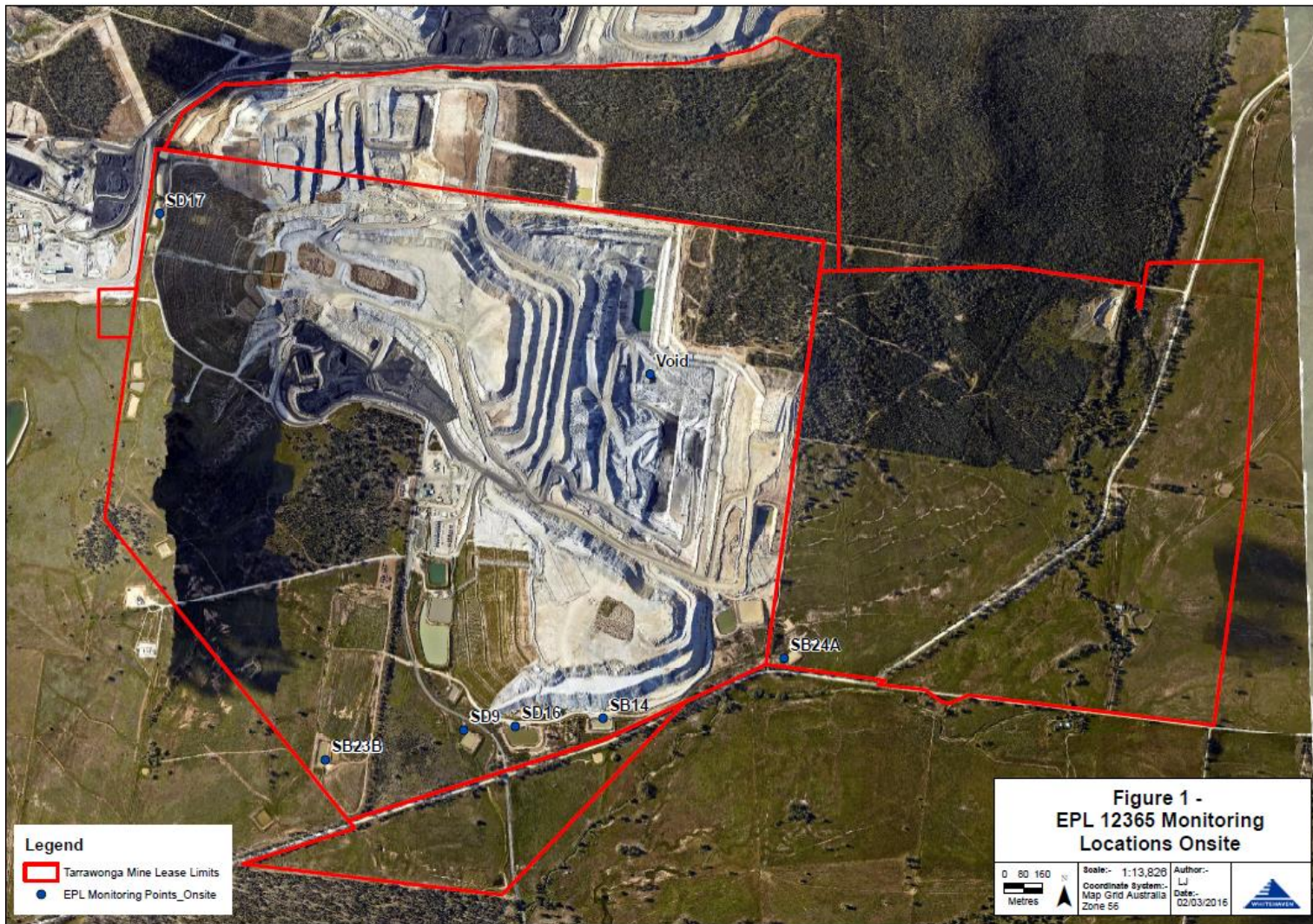
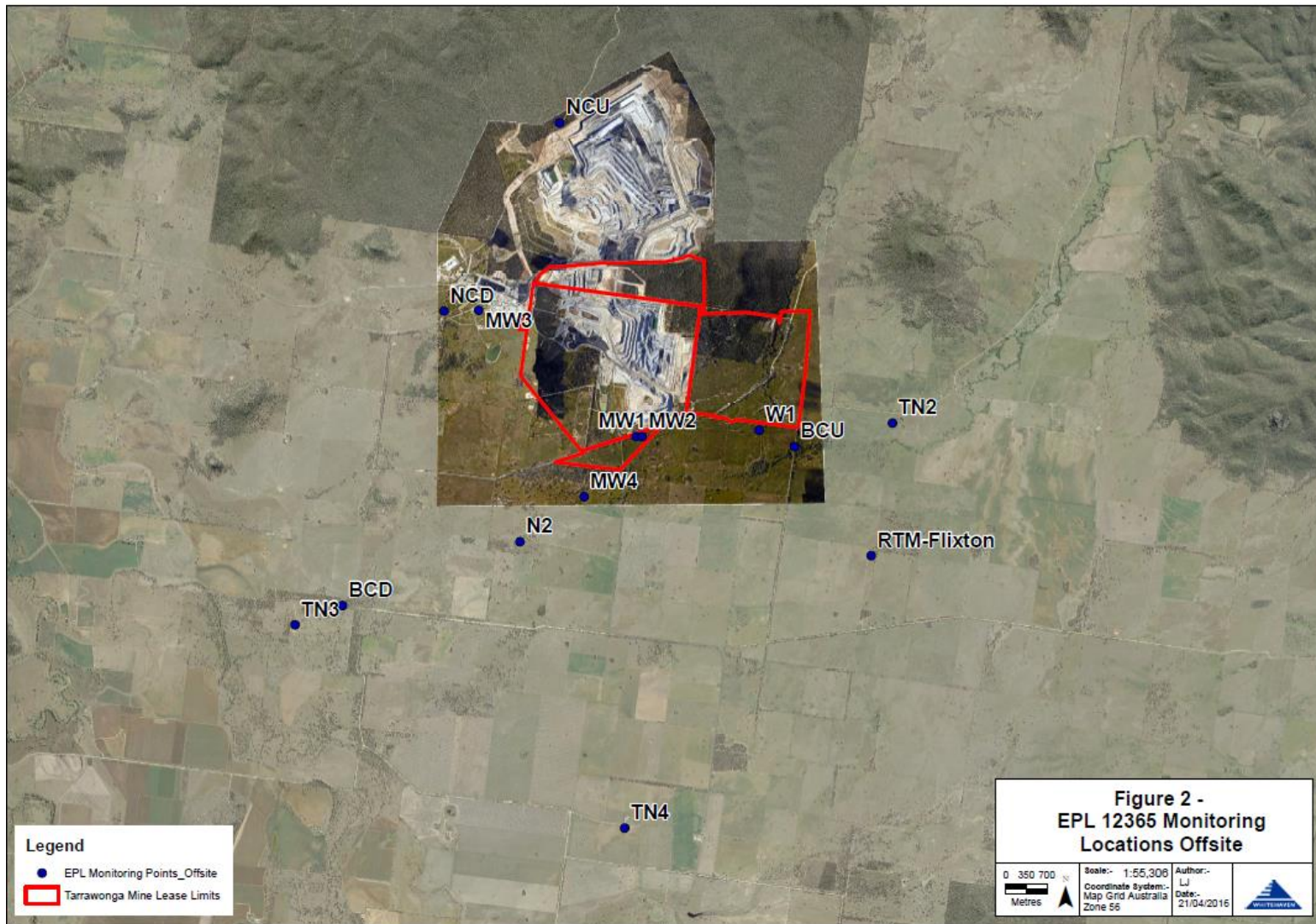




Figure 2 – EPL 12365 Offsite Monitoring Locations



## TARRAWONGA COAL MINE – MONTHLY MONITORING SUMMARY

### Site Information

**EPL No:** 12365

**EPA Website Link:** <http://www.epa.nsw.gov.au/prpoeoapp/ViewPOEOLicence.aspx?DOCID=55113&SYSUID=1&LICID=12365>

**Licensee:** Tarrawonga Coal Pty Ltd

**Licensee Address:** Tarrawonga Coal Mine, 469 Goonbri Road, BOGGABRI NSW 2382

**EPL Monitoring Points:** See Figure 1 and 2 below

**Sampling Period:** July 2018

**Obtained Date:** 13/08/2018

**Publication Date:** 13/08/2018

**Table 1 - No Pollutant Limits Apply**

EPL ID	Pollutant	Units of Measure	Monitoring Frequency	No. of Samples for the Month	Date Sampled	Date Obtained	Min Value	Mean Value	Median Value	Max or Only Value
5	TSS	mg/L	Upon discharge	0	-	-	-	-	-	-
	Conductivity	ms/cm		0	-	-	-	-	-	-
	Oil & Grease	mg/L		0	-	-	-	-	-	-
	pH	pH		0	-	-	-	-	-	-
6	TSS	mg/L	Upon discharge	0	-	-	-	-	-	-
	Conductivity	ms/cm		0	-	-	-	-	-	-
	Oil & Grease	mg/L		0	-	-	-	-	-	-
	pH	pH		0	-	-	-	-	-	-
7	TSS	mg/L	Upon discharge	0	-	-	-	-	-	-
	Conductivity	ms/cm		0	-	-	-	-	-	-
	Oil & Grease	mg/L		0	-	-	-	-	-	-
	pH	pH		0	-	-	-	-	-	-
8	TSS	mg/L	Upon discharge	0	-	-	-	-	-	-
	Conductivity	ms/cm		0	-	-	-	-	-	-
	Oil & Grease	mg/L		0	-	-	-	-	-	-
	pH	pH		0	-	-	-	-	-	-

Table 2 - Pollutant Limits Apply

EPL ID	Pollutant	Units of Measure	Monitoring Frequency	No. of Samples for the Month	Date Sampled	Date Obtained	Min Value	Max or Only Value	100%ile Limit	Exceedance (Yes/No)	Comments
1	TSS	mg/L	Upon discharge	0	-	-	-	-		-	-
	Oil & Grease	mg/L		0	-	-	-	-		-	-
	pH	pH		0	-	-	-	-		-	-
2	TSS	mg/L	Upon discharge	0	-	-	-	-		-	-
	Oil & Grease	mg/L		0	-	-	-	-		-	-
	pH	pH		0	-	-	-	-		-	-
3	TSS	mg/L	Upon discharge	0	-	-	-	-		-	-
	Oil & Grease	mg/L		0	-	-	-	-		-	-
	pH	pH		0	-	-	-	-		-	-
24	TSS	mg/L	Upon discharge	0	-	-	-	-		-	-
	Oil & Grease	mg/L		0	-	-	-	-		-	-
	pH	pH		0	-	-	-	-		-	-
25	TSS	mg/L	Upon discharge	0	-	-	-	-		-	-
	Oil & Grease	mg/L		0	-	-	-	-		-	-
	pH	pH		0	-	-	-	-		-	-
26	TSS	mg/L	Upon discharge	0	-	-	-	-		-	-
	Oil & Grease	mg/L		0	-	-	-	-		-	-
	pH	pH		0	-	-	-	-		-	-
27	TSS	mg/L	Upon discharge	0	-	-	-	-		-	-
	Oil & Grease	mg/L		0	-	-	-	-		-	-
	pH	pH		0	-	-	-	-		-	-

**Table 3 – Monitoring (Quarterly & 6 Monthly – No Limits apply)**

<b>EPL ID</b>	<b>Pollutant</b>	<b>Units of Measure</b>	<b>Monitoring Frequency</b>	<b>No. of Samples for the Period</b>	<b>Date Sampled</b>	<b>Date Obtained</b>	<b>Min Value</b>	<b>Mean Value</b>	<b>Median Value</b>	<b>Max or Only Value</b>
9	Conductivity	ms/cm	6 monthly	0	-	-	-	-		
	Lead	mg/L		0	-	-	-	-		
	pH	pH		0	-	-	-	-		
	Standing Water Level	metres		0	-	-	-	-		
10	Conductivity	ms/cm	6 monthly	0	-	-	-	-		
	Lead	mg/L		0	-	-	-	-		
	pH	pH		0	-	-	-	-		
	Standing Water Level	metres		0	-	-	-	-		
11	Conductivity	ms/cm	6 monthly	0	-	-	-	-		
	Lead	mg/L		0	-	-	-	-		
	pH	pH		0	-	-	-	-		
	Standing Water Level	metres		0	-	-	-	-		
12	Conductivity	ms/cm	6 monthly	0	-	-	-	-		
	Lead	mg/L		0	-	-	-	-		
	pH	pH		0	-	-	-	-		
	Standing Water Level	metres		0	-	-	-	-		
13	Conductivity	ms/cm	Quarterly	0						
	Oil & Grease	mg/L		0						
	pH	pH		0						
	TSS	mg/L		0						

**Table 4 – Quarterly Monitoring (Noise – Limits Apply- Extracted from Table 1 -SLR Q2 2018 Monitoring report)**

EPL ID	Location	Date	Tarrawonga Coal Mine Contribution dBA				Criteria	Measurement Periods	Weather Compliant			Compliant
			LAeq(15minute) Day	LAeq(15minute) Evening	LAeq(15minute) Night	LA1(1minute) Night			Day	Eve	Night	
79a	Barbers Lagoon	20/06/2018	I/A	30	29	31	Day, Evening and Night – 35 dBA LAeq(15minute)	Day - 1.5 hrs Evening - 0.5 hrs Night – 1hrs	N	Y	Y	Y
		21/06/2018	I/A	26	25	33			Y	Y	Y	Y
		22/06/2018	N/M	I/A	30	32			Y	Y	N	Y
		23/06/2018	34	I/A	I/A	I/A			Y	Y	Y	Y
89	Bungalow	20/06/2018	I/A	I/A	I/A	I/A	Night – 45 dBA LA1(1minute)  Cumulative Day, Evening, Night 40 dBA LAeq(15minute)	Day - 1.5 hrs Evening - 0.5 hrs Night – 1hrs	Y	Y	N	Y
		21/06/2018	I/A	N/M	20	34			N	Y	N	Y
		22/06/2018	I/A	I/A	25	29			Y	Y	Y	Y
		23/06/2018	I/A	I/A	I/A	I/A			Y	Y	Y	Y
60a	Coomalgah/ Matong	20/06/2018	25	19	19	24	Night – 45 dBA LA1(1minute)  Cumulative Day, Evening, Night 40 dBA LAeq(15minute)	Day - 1.5 hrs Evening - 0.5 hrs Night – 1hrs	N	Y	Y	Y
		21/06/2018	24	N/M	26	30			Y	Y	Y	Y
		22/06/2018	35	21	31	39			Y	Y	Y	Y
		23/06/2018	35	I/A	I/A	I/A			Y	Y	Y	Y

Note:

I/A = Inaudible

N/M = Not Measurable



**Table 5 – Monthly Monitoring (Blasts – Limits Apply)**

Location	Parameter	Units of Measure	Frequency	No. of Blasts for the Month	Average Value	Max Value	100%ile Limit	(Potential) Non-compliance /breach	Date Obtained
Tarrawonga*	Blast Noise	dB (Lin Peak)	Every Blast	4	98.3	107.8	N/A	N/A	18/07/2018
	Blast Vibration	mm/s	Every Blast	4	0.45	0.82	N/A	N/A	18/07/2018
Coomalgah	Blast Noise	dB (Lin Peak)	Every Blast	4	96.6	102.7	120	Nil	18/07/2018
	Blast Vibration	mm/s	Every Blast	4	0.38	1.12	10	Nil	18/07/2018

*\*Mine owned property – no limit apply*

**Table 6- Monthly Monitoring (Dust PM10 – No Limits apply)**

Location	No. of samples required by licence	Lowest sample value	Mean of sample	Highest sample value
“Flixton” property* TEOM (µg/m <sup>3</sup> )	Continuous	6.3	31.5	127.3

*\*Mine owned property – no limit apply*

Figure 1 – EPL 12365 Onsite Monitoring Locations

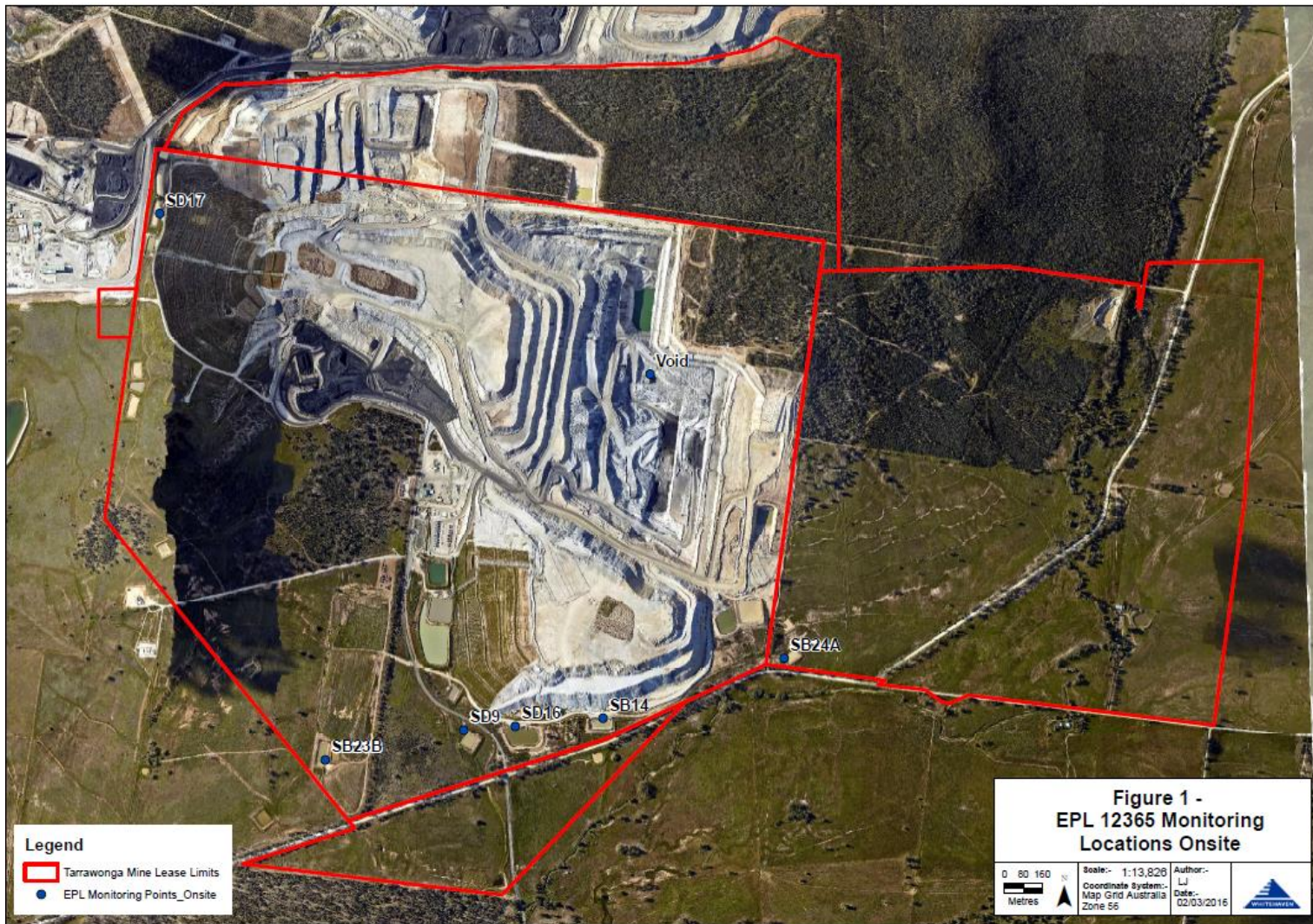
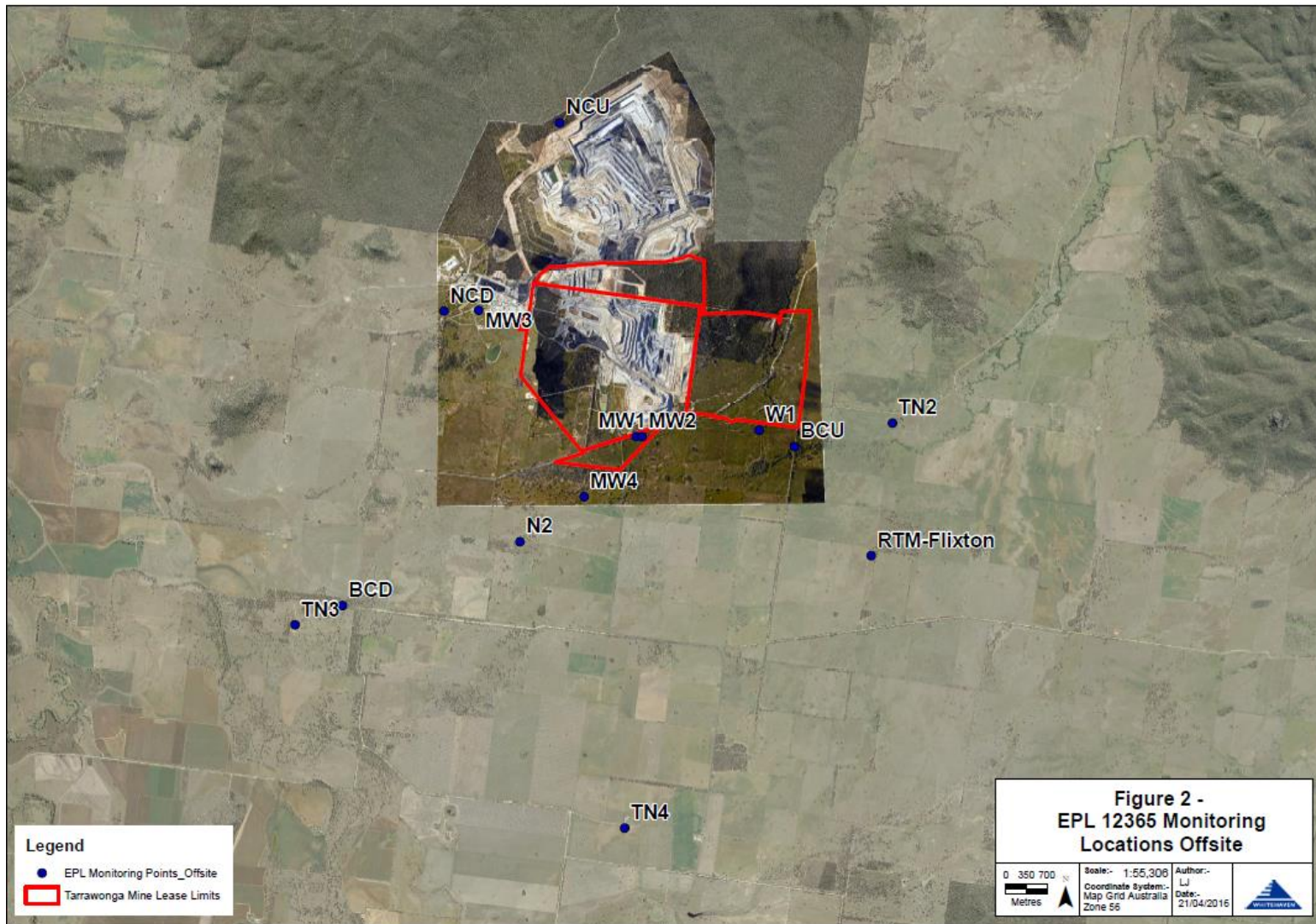




Figure 2 – EPL 12365 Offsite Monitoring Locations



## TARRAWONGA COAL MINE – MONTHLY MONITORING SUMMARY

### Site Information

**EPL No:** 12365

**EPA Website Link:** <http://www.epa.nsw.gov.au/prpoeoapp/ViewPOEOLicence.aspx?DOCID=55113&SYSUID=1&LICID=12365>

**Licensee:** Tarrawonga Coal Pty Ltd

**Licensee Address:** Tarrawonga Coal Mine, 469 Goonbri Road, BOGGABRI NSW 2382

**EPL Monitoring Points:** See Figure 1 and 2 below

**Sampling Period:** August 2018

**Obtained Date:** 04/09/2018

**Publication Date:** 04/09/2018

**Table 1 - No Pollutant Limits Apply**

EPL ID	Pollutant	Units of Measure	Monitoring Frequency	No. of Samples for the Month	Date Sampled	Date Obtained	Min Value	Mean Value	Median Value	Max or Only Value
5	TSS	mg/L	Upon discharge	0	-	-	-	-	-	-
	Conductivity	ms/cm		0	-	-	-	-	-	-
	Oil & Grease	mg/L		0	-	-	-	-	-	-
	pH	pH		0	-	-	-	-	-	-
6	TSS	mg/L	Upon discharge	0	-	-	-	-	-	-
	Conductivity	ms/cm		0	-	-	-	-	-	-
	Oil & Grease	mg/L		0	-	-	-	-	-	-
	pH	pH		0	-	-	-	-	-	-
7	TSS	mg/L	Upon discharge	0	-	-	-	-	-	-
	Conductivity	ms/cm		0	-	-	-	-	-	-
	Oil & Grease	mg/L		0	-	-	-	-	-	-
	pH	pH		0	-	-	-	-	-	-
8	TSS	mg/L	Upon discharge	0	-	-	-	-	-	-
	Conductivity	ms/cm		0	-	-	-	-	-	-
	Oil & Grease	mg/L		0	-	-	-	-	-	-
	pH	pH		0	-	-	-	-	-	-

Table 2 - Pollutant Limits Apply

EPL ID	Pollutant	Units of Measure	Monitoring Frequency	No. of Samples for the Month	Date Sampled	Date Obtained	Min Value	Max or Only Value	100%ile Limit	Exceedance (Yes/No)	Comments
1	TSS	mg/L	Upon discharge	0	-	-	-	-	-	-	-
	Oil & Grease	mg/L		0	-	-	-	-	-	-	-
	pH	pH		0	-	-	-	-	-	-	-
2	TSS	mg/L	Upon discharge	0	-	-	-	-	-	-	-
	Oil & Grease	mg/L		0	-	-	-	-	-	-	-
	pH	pH		0	-	-	-	-	-	-	-
3	TSS	mg/L	Upon discharge	0	-	-	-	-	-	-	-
	Oil & Grease	mg/L		0	-	-	-	-	-	-	-
	pH	pH		0	-	-	-	-	-	-	-
24	TSS	mg/L	Upon discharge	0	-	-	-	-	-	-	-
	Oil & Grease	mg/L		0	-	-	-	-	-	-	-
	pH	pH		0	-	-	-	-	-	-	-
25	TSS	mg/L	Upon discharge	0	-	-	-	-	-	-	-
	Oil & Grease	mg/L		0	-	-	-	-	-	-	-
	pH	pH		0	-	-	-	-	-	-	-
26	TSS	mg/L	Upon discharge	0	-	-	-	-	-	-	-
	Oil & Grease	mg/L		0	-	-	-	-	-	-	-
	pH	pH		0	-	-	-	-	-	-	-
27	TSS	mg/L	Upon discharge	0	-	-	-	-	-	-	-
	Oil & Grease	mg/L		0	-	-	-	-	-	-	-
	pH	pH		0	-	-	-	-	-	-	-

**Table 3 – Monitoring (Quarterly & 6 Monthly – No Limits apply)**

EPL ID	Pollutant	Units of Measure	Monitoring Frequency	No. of Samples for the Period	Date Sampled	Date Obtained	Min Value	Mean Value	Median Value	Max or Only Value
9	Conductivity	ms/cm	6 monthly – (Mar- Sep)	0	-	-	-	-	-	-
	Lead	mg/L		0	-	-	-	-	-	-
	pH	pH		0	-	-	-	-	-	-
	Standing Water Level	metres		0	-	-	-	-	-	-
10	Conductivity	ms/cm	6 monthly – (Mar- Sep)	0	-	-	-	-	-	-
	Lead	mg/L		0	-	-	-	-	-	-
	pH	pH		0	-	-	-	-	-	-
	Standing Water Level	metres		0	-	-	-	-	-	-
11	Conductivity	ms/cm	6 monthly – (Mar- Sep)	0	-	-	-	-	-	-
	Lead	mg/L		0	-	-	-	-	-	-
	pH	pH		0	-	-	-	-	-	-
	Standing Water Level	metres		0	-	-	-	-	-	-
12	Conductivity	ms/cm	6 monthly – (Mar- Sep)	0	-	-	-	-	-	-
	Lead	mg/L		0	-	-	-	-	-	-
	pH	pH		0	-	-	-	-	-	-
	Standing Water Level	metres		0	-	-	-	-	-	-
13	Conductivity	ms/cm	Quarterly - (Feb, May, Aug, Nov)	1	21/08/18	-	-	-	-	3590
	Oil & Grease	mg/L		1	21/08/18	-	-	-	-	<5
	pH	pH		1	21/08/18	-	-	-	-	8.9
	TSS	mg/L		1	21/08/18	-	-	-	-	<5

**Table 4 – Quarterly Monitoring (Noise – Limits Apply)**

*Not Available- Next Quarterly monitoring to be undertaken in September 2018*



**Table 5 – Monthly Monitoring (Blasts – Limits Apply)**

Location	Parameter	Units of Measure	Frequency	No. of Blasts for the Month	Average Value	Max Value	100%ile Limit	(Potential) Non-compliance /breach	Date Obtained
Tarrawonga*	Blast Noise	dB (Lin Peak)	Every Blast	8	94.3	105.5	N/A	N/A	15/08/18
	Blast Vibration	mm/s	Every Blast	8	0.22	0.76	N/A	N/A	02/08/18
Coomalgah	Blast Noise	dB (Lin Peak)	Every Blast	8	96.1	104.2	120	Nil	15/08/18
	Blast Vibration	mm/s	Every Blast	8	0.27	1.03	10	Nil	02/08/18

*\*Mine owned property – no limit apply*

**Table 6- Monthly Monitoring (Dust PM10 – No Limits apply)**

Location	No. of samples required by licence	Lowest sample value	Mean of sample	Highest sample value
“Flixton” property* TEOM (µg/m <sup>3</sup> )	Continuous	6.9	22.3	85.0

*\*Mine owned property – no limit apply*

Figure 1 – EPL 12365 Onsite Monitoring Locations

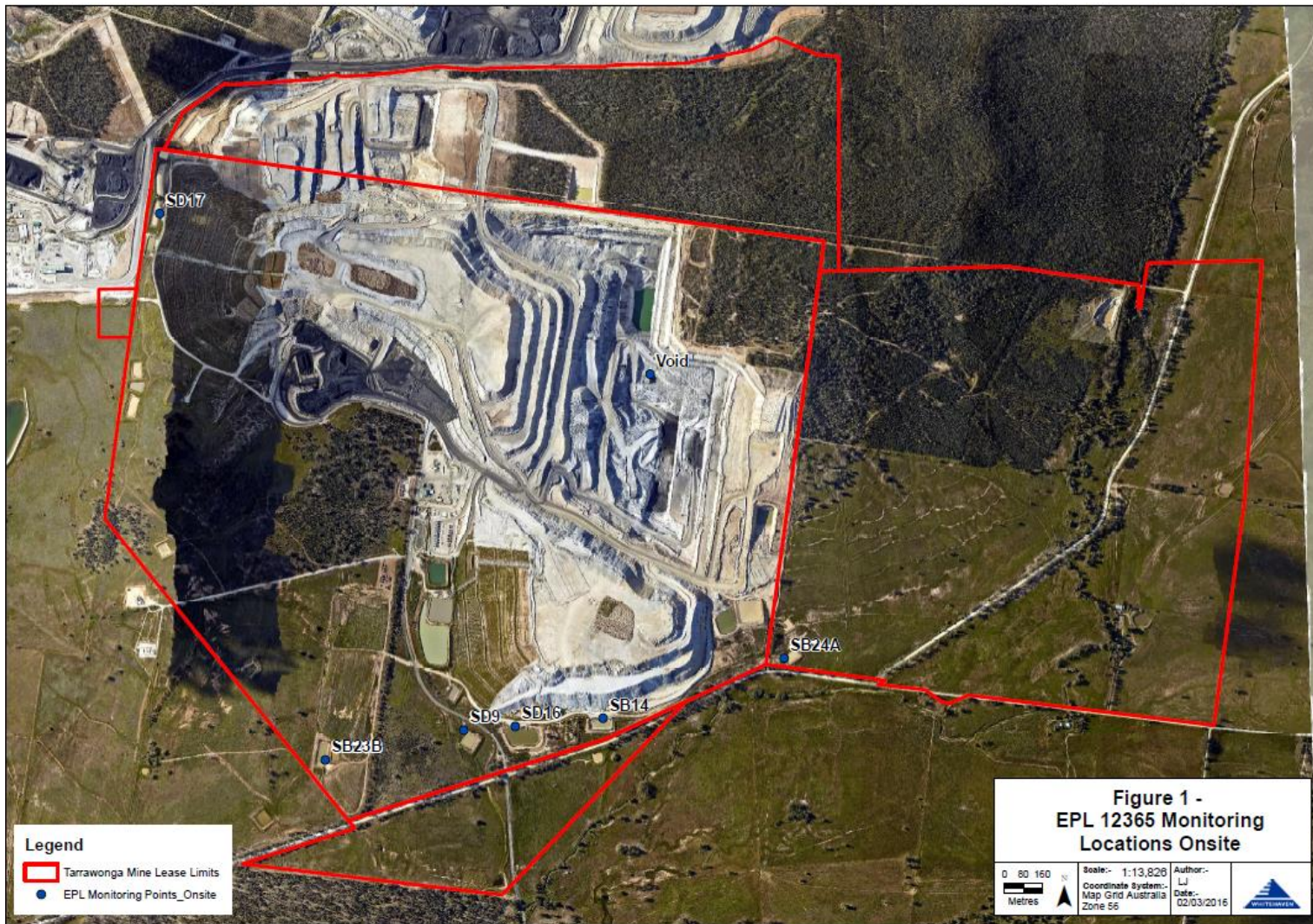
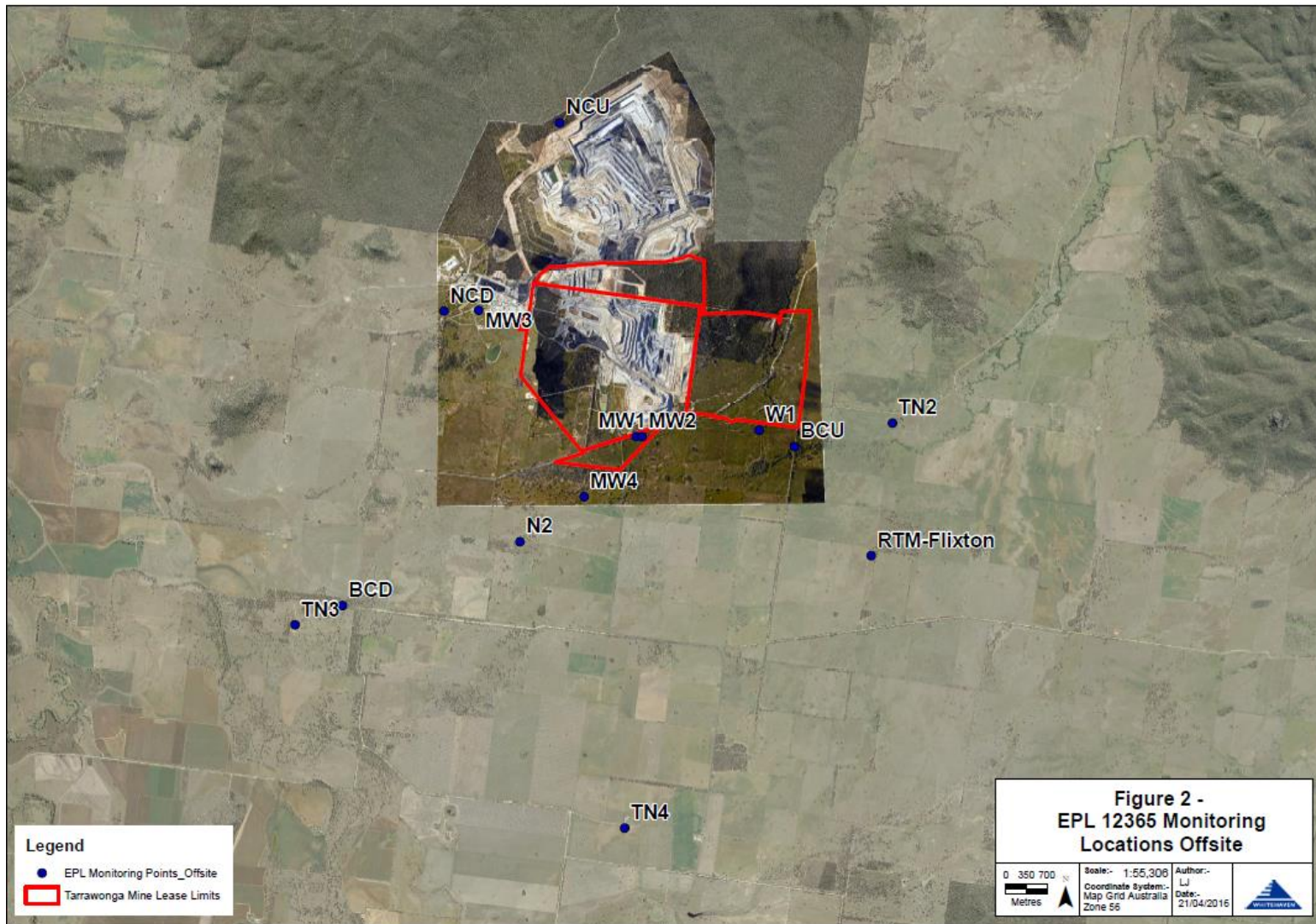




Figure 2 – EPL 12365 Offsite Monitoring Locations



## TARRAWONGA COAL MINE – MONTHLY MONITORING SUMMARY

### Site Information

**EPL No:** 12365

**EPA Website Link:** <http://www.epa.nsw.gov.au/prpoeoapp/ViewPOEOLicence.aspx?DOCID=55113&SYSUID=1&LICID=12365>

**Licensee:** Tarrawonga Coal Pty Ltd

**Licensee Address:** Tarrawonga Coal Mine, 469 Goonbri Road, BOGGABRI NSW 2382

**EPL Monitoring Points:** See Figure 1 and 2 below

**Sampling Period:** September 2018

**Obtained Date:** 10/10/2018

**Publication Date:** 10/10/2018

**Table 1 - No Pollutant Limits Apply**

EPL ID	Pollutant	Units of Measure	Monitoring Frequency	No. of Samples for the Month	Date Sampled	Date Obtained	Min Value	Mean Value	Median Value	Max or Only Value
5	TSS	mg/L	Upon discharge	0	-	-	-	-	-	-
	Conductivity	ms/cm		0	-	-	-	-	-	-
	Oil & Grease	mg/L		0	-	-	-	-	-	-
	pH	pH		0	-	-	-	-	-	-
6	TSS	mg/L	Upon discharge	0	-	-	-	-	-	-
	Conductivity	ms/cm		0	-	-	-	-	-	-
	Oil & Grease	mg/L		0	-	-	-	-	-	-
	pH	pH		0	-	-	-	-	-	-
7	TSS	mg/L	Upon discharge	0	-	-	-	-	-	-
	Conductivity	ms/cm		0	-	-	-	-	-	-
	Oil & Grease	mg/L		0	-	-	-	-	-	-
	pH	pH		0	-	-	-	-	-	-
8	TSS	mg/L	Upon discharge	0	-	-	-	-	-	-
	Conductivity	ms/cm		0	-	-	-	-	-	-
	Oil & Grease	mg/L		0	-	-	-	-	-	-
	pH	pH		0	-	-	-	-	-	-

Table 2 - Pollutant Limits Apply

EPL ID	Pollutant	Units of Measure	Monitoring Frequency	No. of Samples for the Month	Date Sampled	Date Obtained	Min Value	Max or Only Value	100%ile Limit	Exceedance (Yes/No)	Comments
1	TSS	mg/L	Upon discharge	0	-	-	-	-	-	-	-
	Oil & Grease	mg/L		0	-	-	-	-	-	-	-
	pH	pH		0	-	-	-	-	-	-	-
2	TSS	mg/L	Upon discharge	0	-	-	-	-	-	-	-
	Oil & Grease	mg/L		0	-	-	-	-	-	-	-
	pH	pH		0	-	-	-	-	-	-	-
3	TSS	mg/L	Upon discharge	0	-	-	-	-	-	-	-
	Oil & Grease	mg/L		0	-	-	-	-	-	-	-
	pH	pH		0	-	-	-	-	-	-	-
24	TSS	mg/L	Upon discharge	0	-	-	-	-	-	-	-
	Oil & Grease	mg/L		0	-	-	-	-	-	-	-
	pH	pH		0	-	-	-	-	-	-	-
25	TSS	mg/L	Upon discharge	0	-	-	-	-	-	-	-
	Oil & Grease	mg/L		0	-	-	-	-	-	-	-
	pH	pH		0	-	-	-	-	-	-	-
26	TSS	mg/L	Upon discharge	0	-	-	-	-	-	-	-
	Oil & Grease	mg/L		0	-	-	-	-	-	-	-
	pH	pH		0	-	-	-	-	-	-	-
27	TSS	mg/L	Upon discharge	0	-	-	-	-	-	-	-
	Oil & Grease	mg/L		0	-	-	-	-	-	-	-
	pH	pH		0	-	-	-	-	-	-	-

**Table 3 – Monitoring (Quarterly & 6 Monthly – No Limits apply)**

EPL ID	Pollutant	Units of Measure	Monitoring Frequency	No. of Samples for the Period	Date Sampled	Date Obtained	Min Value	Mean Value	Median Value	Max or Only Value
9	Conductivity	ms/cm	6 monthly – (Mar- Sep)	1	13/09/18	-	-	-	-	3,430
	Lead	mg/L		1	13/09/18	-	-	-	-	0.004
	pH	pH		1	13/09/18	-	-	-	-	7.7
	Standing Water Level	metres		1	13/09/18	-	-	-	-	6.92
10	Conductivity	ms/cm	6 monthly – (Mar- Sep)	1	13/09/18	-	-	-	-	615
	Lead	mg/L		1	13/09/18	-	-	-	-	0.009
	pH	pH		1	13/09/18	-	-	-	-	6.8
	Standing Water Level	metres		1	13/09/18	-	-	-	-	4.79
11	Conductivity	ms/cm	6 monthly – (Mar- Sep)	1	04/06/18	-	-	-	-	2,040
	Lead	mg/L		1	04/06/18	-	-	-	-	<0.0005
	pH	pH		1	04/06/18	-	-	-	-	7.3
	Standing Water Level	metres		1	03/06/18	-	-	-	-	8.6
12	Conductivity	ms/cm	6 monthly – (Mar- Sep)	1	13/09/18	-	-	-	-	4560
	Lead	mg/L		1	13/09/18	-	-	-	-	0.002
	pH	pH		1	13/09/18	-	-	-	-	6.9
	Standing Water Level	metres		1	13/09/18	-	-	-	-	9.34
13	Conductivity	ms/cm	Quarterly - (Feb, May, Aug, Nov)	0	-	-	-	-	-	-
	Oil & Grease	mg/L		0	-	-	-	-	-	-
	pH	pH		0	-	-	-	-	-	-
	TSS	mg/L		0	-	-	-	-	-	-



**Table 4 – Quarterly Monitoring (Noise – Limits Apply)**

*Not Available- Quarterly monitoring was undertaken late September 2018*

**Table 5 – Monthly Monitoring (Blasts – Limits Apply)**

Location	Parameter	Units of Measure	Frequency	No. of Blasts for the Month	Average Value	Max Value	100%ile Limit	(Potential) Non-compliance /breach	Date Obtained
Tarrawonga*	Blast Noise	dB (Lin Peak)	Every Blast	5	99.9	116	N/A	N/A	21/9/18
	Blast Vibration	mm/s	Every Blast	5	0.47	1.3	N/A	N/A	27/09/18
Coomalgah	Blast Noise	dB (Lin Peak)	Every Blast	5	94.8	101.2	120	Nil	21/09/18
	Blast Vibration	mm/s	Every Blast	5	0.4	1.08	10	Nil	21/09/18

*\*Mine owned property – no limit apply*

**Table 6- Monthly Monitoring (Dust PM10 – No Limits apply)**

Location	No. of samples required by licence	Lowest sample value	Mean of sample	Highest sample value
“Flixton” property* TEOM (µg/m <sup>3</sup> )	Continuous	2.5	22.6	159.4 <sup>#</sup>

*\*Mine owned property – no limit apply*

*# investigation showed wind were from S-SW*

Figure 1 – EPL 12365 Onsite Monitoring Locations

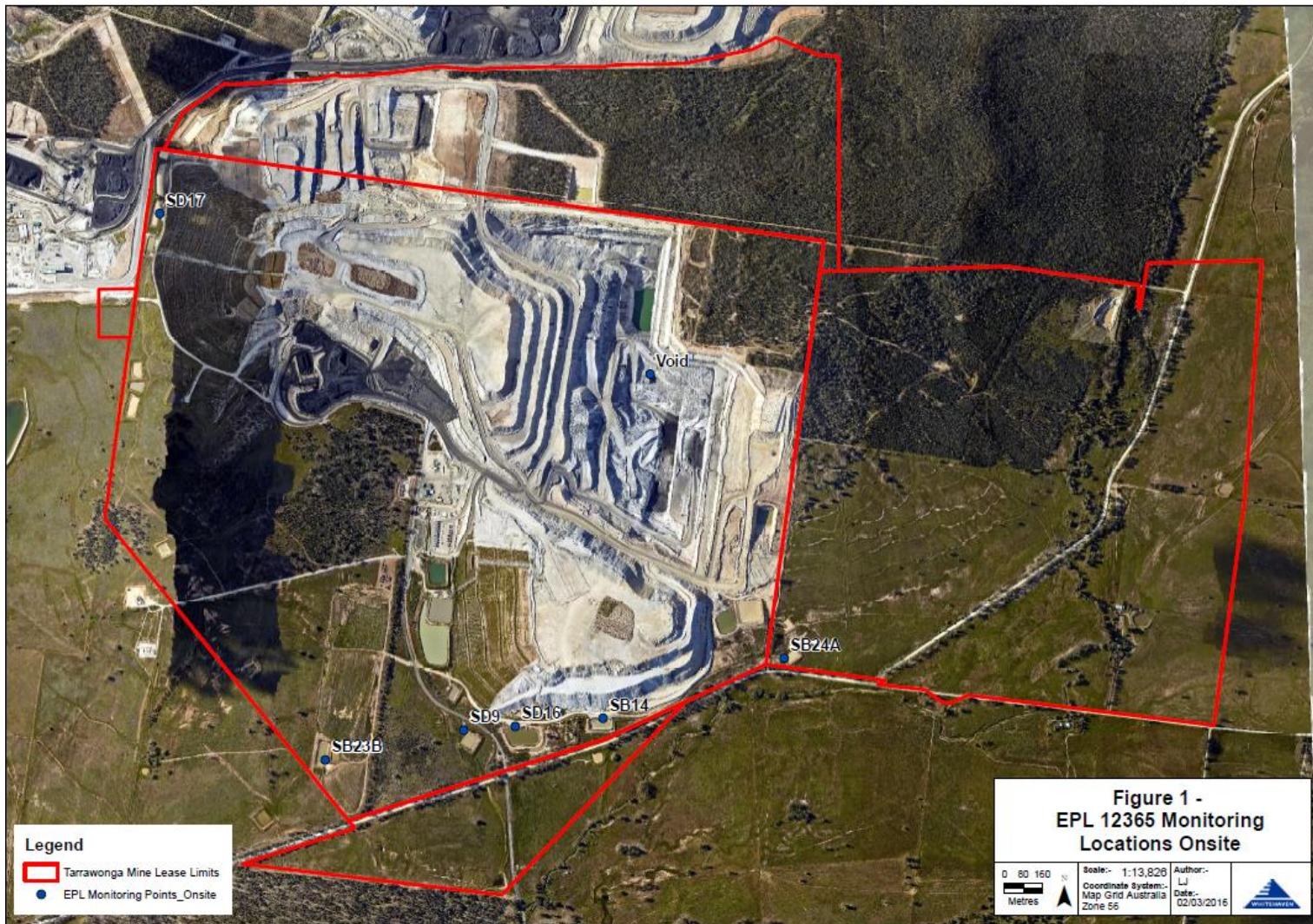
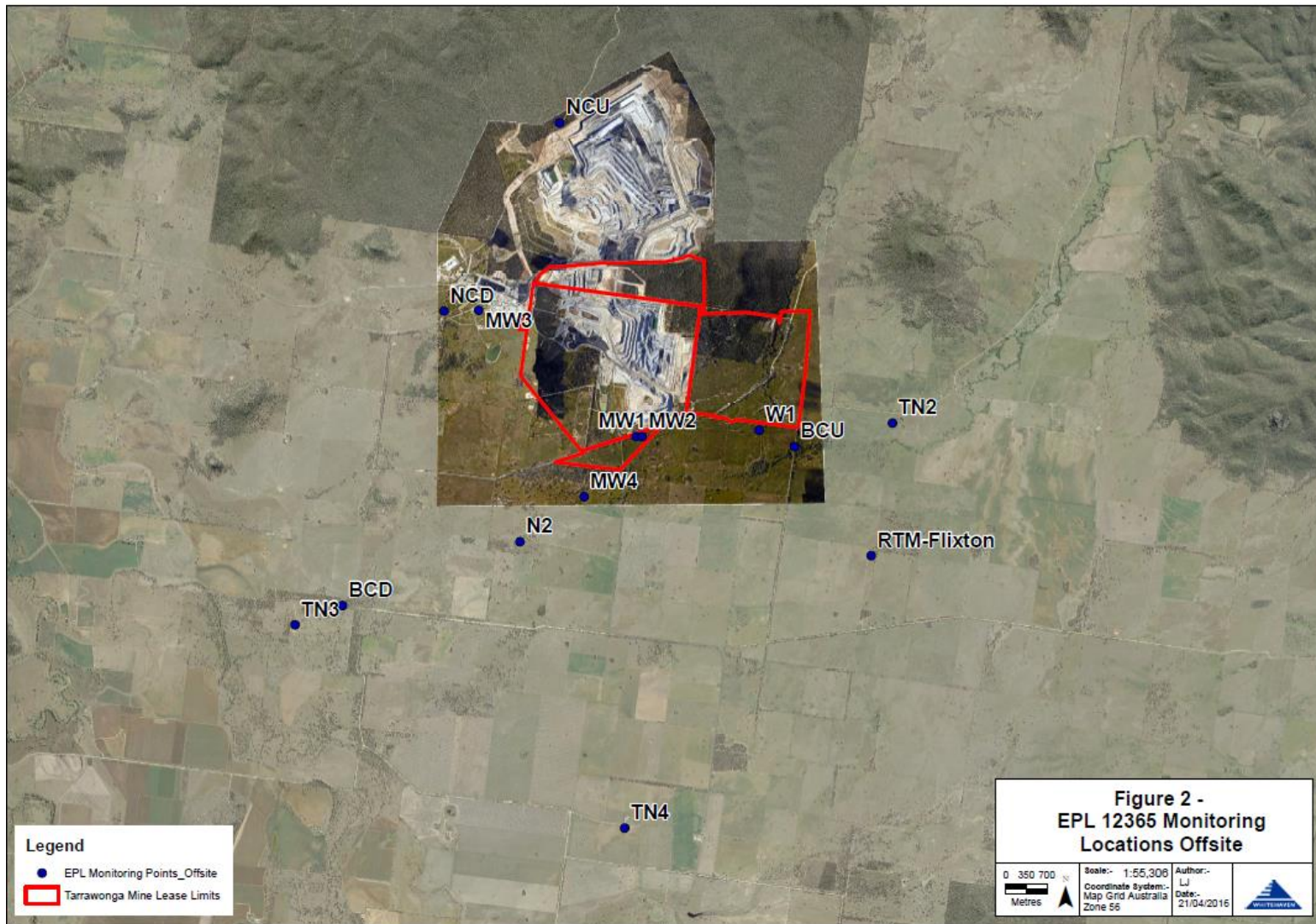




Figure 2 – EPL 12365 Offsite Monitoring Locations



## TARRAWONGA COAL MINE – MONTHLY MONITORING SUMMARY

### Site Information

**EPL No:** 12365

**EPA Website Link:** <http://www.epa.nsw.gov.au/prpoeoapp/ViewPOEOLicence.aspx?DOCID=55113&SYSUID=1&LICID=12365>

**Licensee:** Tarrawonga Coal Pty Ltd

**Licensee Address:** Tarrawonga Coal Mine, 469 Goonbri Road, BOGGABRI NSW 2382

**EPL Monitoring Points:** See Figure 1 and 2 below

**Sampling Period:** October 2018

**Obtained Date:** 10/11/2018

Publication Date: 10/11/2018

**Table 1 - No Pollutant Limits Apply**

EPL ID	Pollutant	Units of Measure	Monitoring Frequency	No. of Samples for the Month	Date Sampled	Date Obtained	Min Value	Mean Value	Median Value	Max or Only Value	Comments
5	TSS	mg/L	Upon discharge	0	-	-	-	-	-	-	No sample- Bollol Creek Dry
	Conductivity	ms/cm		0	-	-	-	-	-	-	
	Oil & Grease	mg/L		0	-	-	-	-	-	-	
	pH	pH		0	-	-	-	-	-	-	
6	TSS	mg/L	Upon discharge	0	-	-	-	-	-	-	No Sample- Bollol Creek Dry
	Conductivity	ms/cm		0	-	-	-	-	-	-	
	Oil & Grease	mg/L		0	-	-	-	-	-	-	
	pH	pH		0	-	-	-	-	-	-	
7	TSS	mg/L	Upon discharge	0	-	-	-	-	-	-	No Sample by BCM- Dryd
	Conductivity	ms/cm		0	-	-	-	-	-	-	
	Oil & Grease	mg/L		0	-	-	-	-	-	-	
	pH	pH		0	-	-	-	-	-	-	
8	TSS	mg/L	Upon discharge	0	-	-	-	-	-	-	No Sample by BCM- Dry
	Conductivity	ms/cm		0	-	-	-	-	-	-	
	Oil & Grease	mg/L		0	-	-	-	-	-	-	
	pH	pH		0	-	-	-	-	-	-	

**Table 2 - Pollutant Limits Apply**

EPL ID	Pollutant	Units of Measure	Monitoring Frequency	No. of Samples for the Month	Date Sampled	Date Obtained	Min Value	Max or Only Value	100%ile Limit	Exceedance (Yes/No)	Comments
1	TSS	mg/L	Upon discharge	1	21/10/18	-	-	3,970	50	NA	TSS limit do not apply after more than 38.3mm of rainfall in 5 days preceding the discharge
	Oil & Grease	mg/L		1	21/10/18	-	-	<5	10	No	
	pH	pH		1	21/10/18	-	-	7.7	6.5-8.5	No	
2	TSS	mg/L	Upon discharge	0	-	-	-	-	-	-	-
	Oil & Grease	mg/L		0	-	-	-	-	-	-	-
	pH	pH		0	-	-	-	-	-	-	-
3	TSS	mg/L	Upon discharge	0	-	-	-	-	-	-	-
	Oil & Grease	mg/L		0	-	-	-	-	-	-	-
	pH	pH		0	-	-	-	-	-	-	-
24	TSS	mg/L	Upon discharge	0	-	-	-	-	-	-	-
	Oil & Grease	mg/L		0	-	-	-	-	-	-	-
	pH	pH		0	-	-	-	-	-	-	-
25	TSS	mg/L		0	-	-	-	-	-	-	-



EPL ID	Pollutant	Units of Measure	Monitoring Frequency	No. of Samples for the Month	Date Sampled	Date Obtained	Min Value	Max or Only Value	100%ile Limit	Exceedance (Yes/No)	Comments
	Oil & Grease	mg/L	Upon discharge	0	-	-	-	-	-	-	-
	pH	pH		0	-	-	-	-	-	-	-
26	TSS	mg/L	Upon discharge	0	-	-	-	-	-	-	-
	Oil & Grease	mg/L		0	-	-	-	-	-	-	-
	pH	pH		0	-	-	-	-	-	-	-
27	TSS	mg/L	Upon discharge	0	-	-	-	-	-	-	-
	Oil & Grease	mg/L		0	-	-	-	-	-	-	-
	pH	pH		0	-	-	-	-	-	-	-

**Table 3 – Monitoring (Quarterly & 6 Monthly – No Limits apply)**

<b>EPL ID</b>	<b>Pollutant</b>	<b>Units of Measure</b>	<b>Monitoring Frequency</b>	<b>No. of Samples for the Period</b>	<b>Date Sampled</b>	<b>Date Obtained</b>	<b>Min Value</b>	<b>Mean Value</b>	<b>Median Value</b>	<b>Max or Only Value</b>
9	Conductivity	ms/cm	6 monthly – (Mar- Sep)	-	-	-	-	-	-	-
	Lead	mg/L		-	-	-	-	-	-	-
	pH	pH		-	-	-	-	-	-	-
	Standing Water Level	metres		-	-	-	-	-	-	-
10	Conductivity	ms/cm	6 monthly – (Mar- Sep)	-	-	-	-	-	-	-
	Lead	mg/L		-	-	-	-	-	-	-
	pH	pH		-	-	-	-	-	-	-
	Standing Water Level	metres		-	-	-	-	-	-	-
11	Conductivity	ms/cm	6 monthly – (Mar- Sep)	-	-	-	-	-	-	-
	Lead	mg/L		-	-	-	-	-	-	-
	pH	pH		-	-	-	-	-	-	-
	Standing Water Level	metres		-	-	-	-	-	-	-
12	Conductivity	ms/cm	6 monthly – (Mar- Sep)	-	-	-	-	-	-	-
	Lead	mg/L		-	-	-	-	-	-	-
	pH	pH		-	-	-	-	-	-	-
	Standing Water Level	metres		-	-	-	-	-	-	-
13	Conductivity	ms/cm	Quarterly - (Feb, May, Aug, Nov)	-	-	-	-	-	-	-
	Oil & Grease	mg/L		-	-	-	-	-	-	-
	pH	pH		-	-	-	-	-	-	-
	TSS	mg/L		-	-	-	-	-	-	-

**Table 4 – Quarterly Monitoring (Noise – Limits Apply)- Monitoring conducted late September**

EPL ID	Location	Date	Tarrawonga Coal Mine Contribution dBA				Criteria	Measurement Periods	Weather Compliant			Compliant
			LAeq(15minute) Day	LAeq(15minute) Evening	LAeq(15minute) Night	LA1(1minute) Night			Day	Eve	Night	
79a	Barbers Lagoon	17/09/2018	I/A	N/M	29	31	Day, Evening and Night – 35 dBA LAeq(15minute)	Day - 1.5 hrs Evening - 0.5 hrs Night – 1hrs	N	Y	Y	Y
		18/09/2018	I/A	26	30	32			N	Y	N	Y
		19/09/2018	I/A	N/M	I/A	I/A			N	N	Y	Y
		20/09/2018	I/A	I/A	28	29			N	Y	Y	Y
89	Bungalow	17/09/2018	I/A	I/A	27	32	Night – 45 dBA LA1(1minute)		N	Y	Y	Y
		18/09/2018	28	I/A	29	I/A	Cumulative Day, Evening, Night 40 dBA LAeq(15minute)		Y	N	N	Y
		19/09/2018	I/A	I/A	I/A	I/A	N		Y	Y	Y	
		20/09/2018	I/A	I/A	I/A	I/A	N		Y	Y	Y	
60a	Coomalgah/ Matong	17/09/2018	27	I/A	I/A	I/A	Y		Y	Y	Y	
		18/09/2018	29	I/A	I/A	I/A	N		N	N	Y	
		19/09/2018	29	30	32	34	N		Y	Y	Y	
		20/09/2018	N/M	35	31	33	N		N	Y	Y	

Note:  
 I/A = Inaudible  
 N/M = Not Measurable

**Table 5 – Monthly Monitoring (Blasts – Limits Apply)**

Location	Parameter	Units of Measure	Frequency	No. of Blasts for the Month	Average Value	Max Value	100%ile Limit	(Potential) Non-compliance /breach	Date Obtained
Tarrawonga*	Blast Noise	dB (Lin Peak)	Every Blast	10	95.1	104.8	N/A	N/A	12/10/18
	Blast Vibration	mm/s	Every Blast	10	0.17	0.36	N/A	N/A	26/10/18
Coomalgah	Blast Noise	dB (Lin Peak)	Every Blast	10	96.2	106.2	<b>120</b>	<b>Nil</b>	12/10/18
	Blast Vibration	mm/s	Every Blast	10	0.16	0.4	<b>10</b>	<b>Nil</b>	12/10/18

*\*Mine owned property – no limit apply*

**Table 6- Monthly Monitoring (Dust PM10 – No Limits apply)**

Location	No. of samples required by licence	Lowest sample value	Mean of sample	Highest sample value
“Flixton” property* TEOM (µg/m <sup>3</sup> )	Continuous	2.9	13.2	26.7

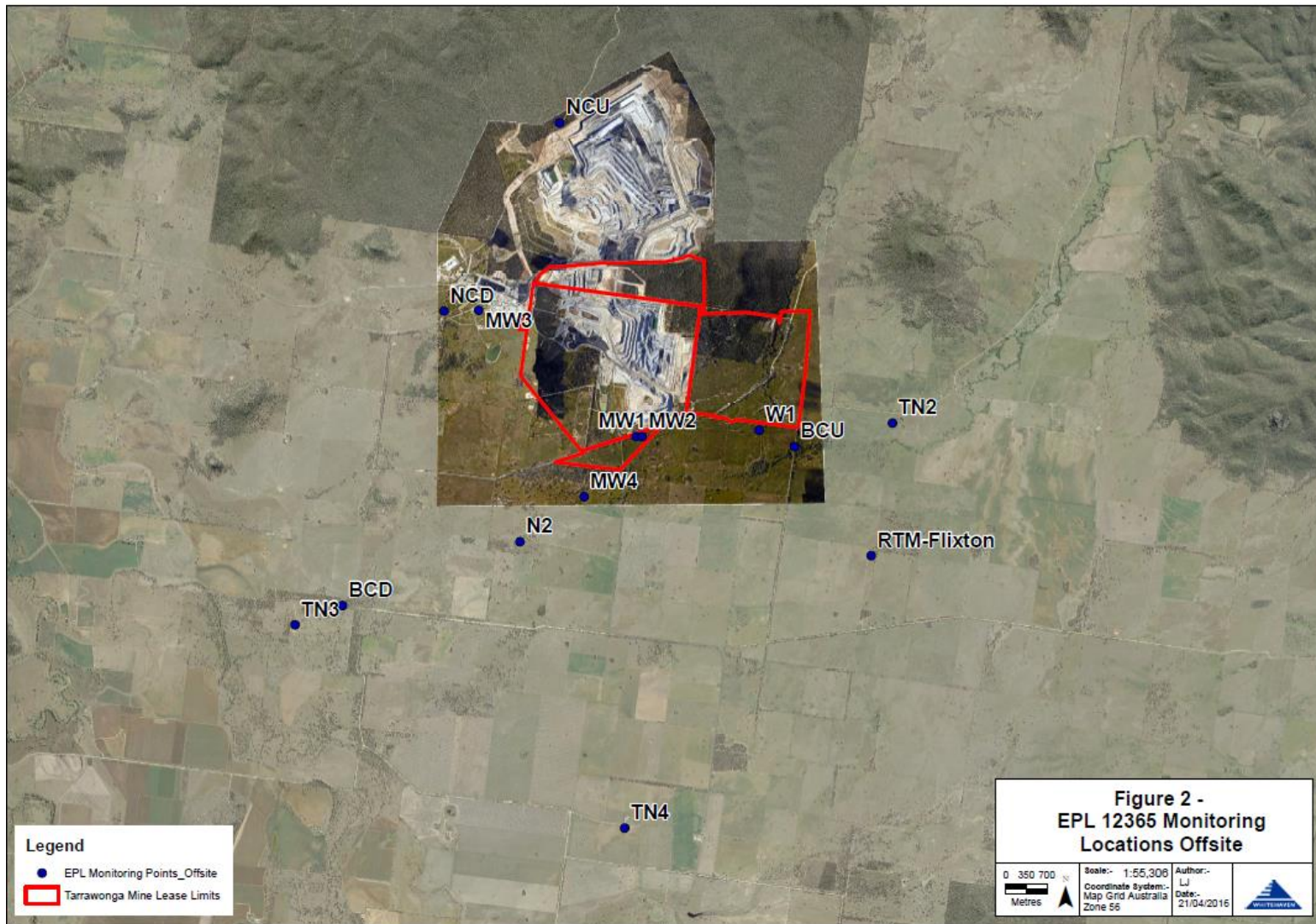
*\*Mine owned property – no limit apply*

Figure 1 – EPL 12365 Onsite Monitoring Locations





Figure 2 – EPL 12365 Offsite Monitoring Locations





## TARRAWONGA COAL MINE – MONTHLY MONITORING SUMMARY

### Site Information

**EPL No:** 12365

**EPA Website Link:** <http://www.epa.nsw.gov.au/prpoeoapp/ViewPOEOLicence.aspx?DOCID=55113&SYSUID=1&LICID=12365>

**Licensee:** Tarrawonga Coal Pty Ltd

**Licensee Address:** Tarrawonga Coal Mine, 469 Goonbri Road, BOGGABRI NSW 2382

**EPL Monitoring Points:** See Figure 1 and 2 below

**Sampling Period:** November 2018

**Obtained Date:** 4/12/2018

Publication Date: 4/12/2018

**Table 1 - No Pollutant Limits Apply**

EPL ID	Pollutant	Units of Measure	Monitoring Frequency	No. of Samples for the Month	Date Sampled	Date Obtained	Min Value	Mean Value	Median Value	Max or Only Value	Comments
5	TSS	mg/L	Upon discharge	0	-	-	-	-	-	-	
	Conductivity	ms/cm		0	-	-	-	-	-	-	
	Oil & Grease	mg/L		0	-	-	-	-	-	-	
	pH	pH		0	-	-	-	-	-	-	
6	TSS	mg/L	Upon discharge	0	-	-	-	-	-	-	
	Conductivity	ms/cm		0	-	-	-	-	-	-	
	Oil & Grease	mg/L		0	-	-	-	-	-	-	
	pH	pH		0	-	-	-	-	-	-	
7	TSS	mg/L	Upon discharge	0	-	-	-	-	-	-	
	Conductivity	ms/cm		0	-	-	-	-	-	-	
	Oil & Grease	mg/L		0	-	-	-	-	-	-	
	pH	pH		0	-	-	-	-	-	-	
8	TSS	mg/L	Upon discharge	0	-	-	-	-	-	-	
	Conductivity	ms/cm		0	-	-	-	-	-	-	
	Oil & Grease	mg/L		0	-	-	-	-	-	-	
	pH	pH		0	-	-	-	-	-	-	

**Table 2 - Pollutant Limits Apply**

<b>EPL ID</b>	<b>Pollutant</b>	<b>Units of Measure</b>	<b>Monitoring &amp; Frequency</b>	<b>No. of Samples for the Month</b>	<b>Date Sampled</b>	<b>Date Obtained</b>	<b>Min Value</b>	<b>Max or Only Value</b>	<b>100%ile Limit</b>	<b>Exceedance (Yes/No)</b>	<b>Comments</b>
1	TSS	mg/L	Upon discharge	0	-	-	-	-	-	-	-
	Oil & Grease	mg/L		0	-	-	-	-	-	-	-
	pH	pH		0	-	-	-	-	-	-	-
2	TSS	mg/L	Upon discharge	0	-	-	-	-	-	-	-
	Oil & Grease	mg/L		0	-	-	-	-	-	-	-
	pH	pH		0	-	-	-	-	-	-	-
3	TSS	mg/L	Upon discharge	0	-	-	-	-	-	-	-
	Oil & Grease	mg/L		0	-	-	-	-	-	-	-
	pH	pH		0	-	-	-	-	-	-	-
24	TSS	mg/L	Upon discharge	0	-	-	-	-	-	-	-
	Oil & Grease	mg/L		0	-	-	-	-	-	-	-
	pH	pH		0	-	-	-	-	-	-	-
25	TSS	mg/L	Upon discharge	0	-	-	-	-	-	-	-
	Oil & Grease	mg/L		0	-	-	-	-	-	-	-
	pH	pH		0	-	-	-	-	-	-	-
26	TSS	mg/L	Upon discharge	0	-	-	-	-	-	-	-
	Oil & Grease	mg/L		0	-	-	-	-	-	-	-
	pH	pH		0	-	-	-	-	-	-	-
27	TSS	mg/L	Upon discharge	0	-	-	-	-	-	-	-
	Oil & Grease	mg/L		0	-	-	-	-	-	-	-
	pH	pH		0	-	-	-	-	-	-	-

**Table 3 – Monitoring (Quarterly & 6 Monthly – No Limits apply)**

<b>EPL ID</b>	<b>Pollutant</b>	<b>Units of Measure</b>	<b>Monitoring Frequency</b>	<b>No. of Samples for the Period</b>	<b>Date Sampled</b>	<b>Date Obtained</b>	<b>Min Value</b>	<b>Mean Value</b>	<b>Median Value</b>	<b>Max or Only Value</b>
9	Conductivity	ms/cm	6 monthly – (Mar- Sep)	-	-	-	-	-	-	-
	Lead	mg/L		-	-	-	-	-	-	-
	pH	pH		-	-	-	-	-	-	-
	Standing Water Level	metres		-	-	-	-	-	-	-
10	Conductivity	ms/cm	6 monthly – (Mar- Sep)	-	-	-	-	-	-	-
	Lead	mg/L		-	-	-	-	-	-	-
	pH	pH		-	-	-	-	-	-	-
	Standing Water Level	metres		-	-	-	-	-	-	-
11	Conductivity	ms/cm	6 monthly – (Mar- Sep)	-	-	-	-	-	-	-
	Lead	mg/L		-	-	-	-	-	-	-
	pH	pH		-	-	-	-	-	-	-
	Standing Water Level	metres		-	-	-	-	-	-	-
12	Conductivity	ms/cm	6 monthly – (Mar- Sep)	-	-	-	-	-	-	-
	Lead	mg/L		-	-	-	-	-	-	-
	pH	pH		-	-	-	-	-	-	-
	Standing Water Level	metres		-	-	-	-	-	-	-
13	Conductivity	ms/cm	Quarterly - (Feb, May, Aug, Nov)	1	13/11/18	-	-	-	-	2,880
	Oil & Grease	mg/L		1	13/11/18	-	-	-	-	<5
	pH	pH		1	13/11/18	-	-	-	-	7.2
	TSS	mg/L		1	13/11/18	-	-	-	-	18

**Table 4 – Quarterly Monitoring (Noise – Limits Apply)-**

*Next Monitoring will be undertaken in Dec -2018*

**Table 5 – Monthly Monitoring (Blasts – Limits Apply)**

Location	Parameter	Units of Measure	Frequency	No. of Blasts for the Month	Average Value	Max Value	100%ile Limit	(Potential) Non-compliance /breach	Date Obtained
Tarrawonga*	Blast Noise	dB (Lin Peak)	Every Blast	5	98.9	106.3	N/A	N/A	2/11/18
	Blast Vibration	mm/s	Every Blast	5	0.18	0.30	N/A	N/A	19/11/18
Coomalgah	Blast Noise	dB (Lin Peak)	Every Blast	5	93.8	100.4	120	Nil	6/1/18
	Blast Vibration	mm/s	Every Blast	5	0.14	0.25	10	Nil	19/11/18

*\*Mine owned property – no limit apply*

**Table 6- Monthly Monitoring (Dust PM10 – No Limits apply)**

Location	No. of samples required by licence	Lowest sample value	Mean of sample	Highest sample value
“Flixton” property* TEOM (µg/m <sup>3</sup> )	Continuous	4.7	36.1	218 <sup>#</sup>

*\*Mine owned property – no limit apply*

*# recorded during a regional dust storm event*

Figure 1 – EPL 12365 Onsite Monitoring Locations

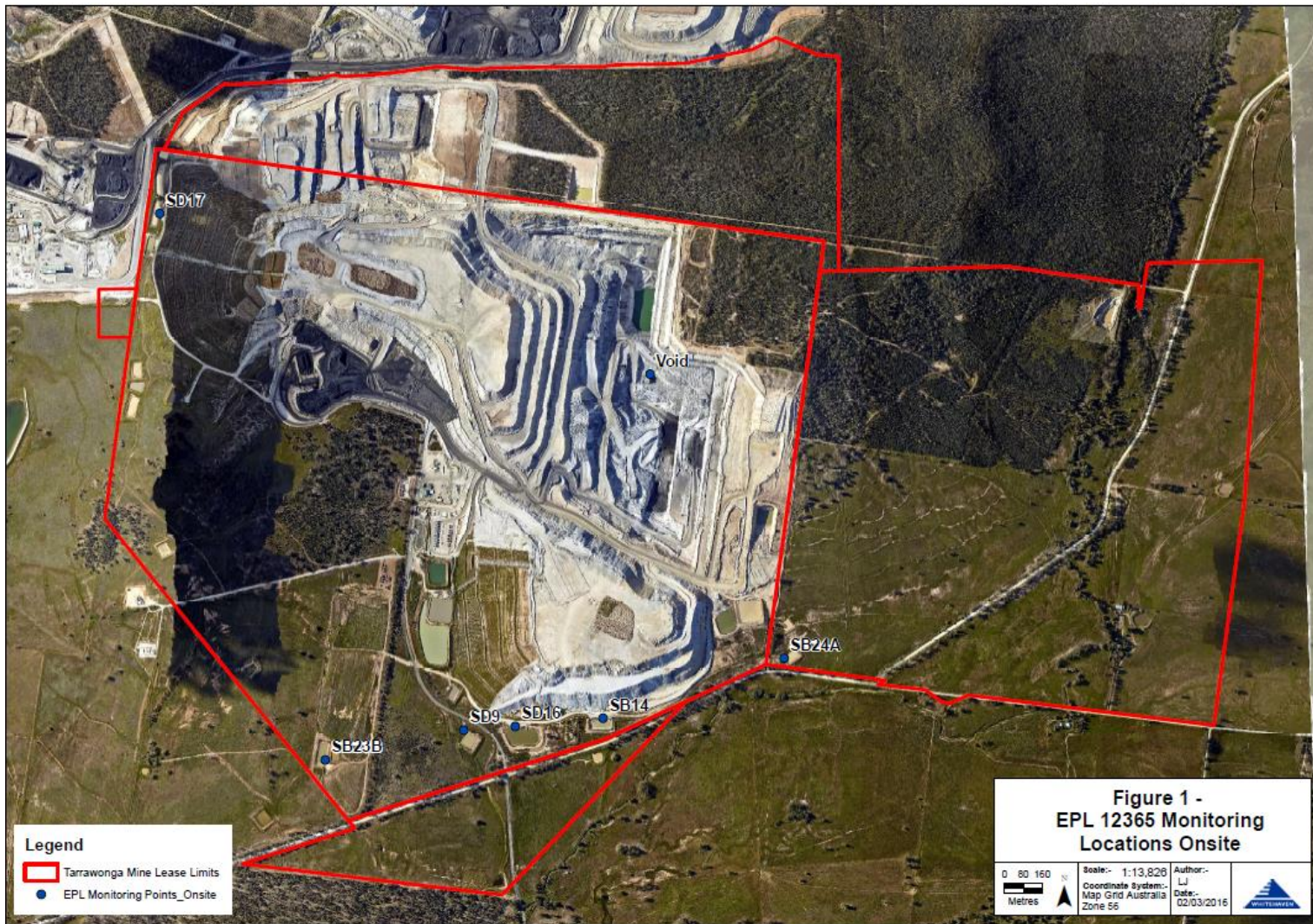
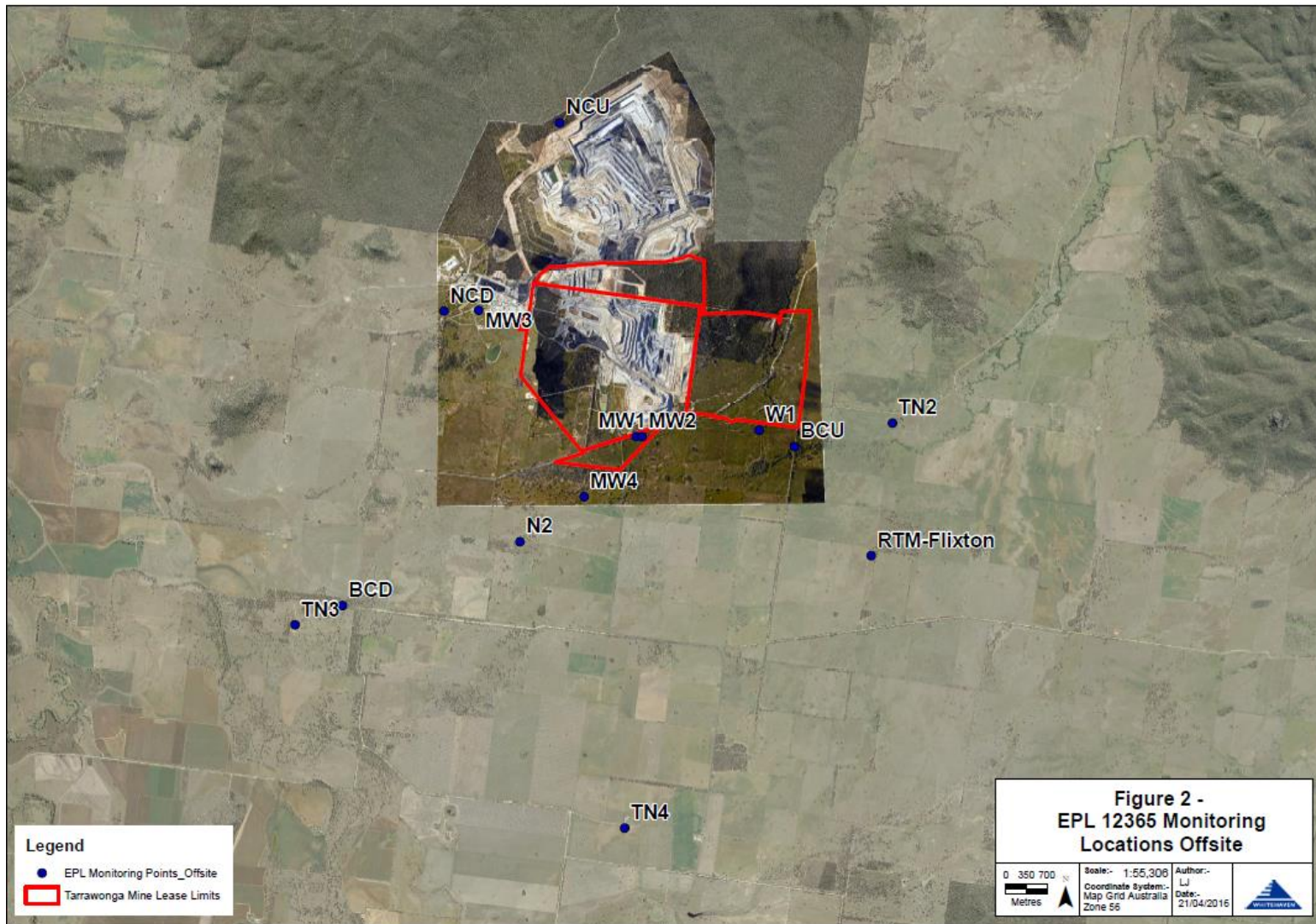




Figure 2 – EPL 12365 Offsite Monitoring Locations



## TARRAWONGA COAL MINE – MONTHLY MONITORING SUMMARY

### Site Information

**EPL No:** 12365

**EPA Website Link:** <http://www.epa.nsw.gov.au/prpoeoapp/ViewPOEOLicence.aspx?DOCID=55113&SYSUID=1&LICID=12365>

**Licensee:** Tarrawonga Coal Pty Ltd

**Licensee Address:** Tarrawonga Coal Mine, 469 Goonbri Road, BOGGABRI NSW 2382

**EPL Monitoring Points:** See Figure 1 and 2 below

**Sampling Period:** December 2018

**Obtained Date:** 4/01/2019

**Publication Date:** 8/01/2019

**Table 1 - No Pollutant Limits Apply**

EPL ID	Pollutant	Units of Measure	Monitoring Frequency	No. of Samples for the Month	Date Sampled	Date Obtained	Min Value	Mean Value	Median Value	Max or Only Value	Comments
5	TSS	mg/L	Upon discharge	0	-	-	-	-	-	-	
	Conductivity	ms/cm		0	-	-	-	-	-	-	
	Oil & Grease	mg/L		0	-	-	-	-	-	-	
	pH	pH		0	-	-	-	-	-	-	
6	TSS	mg/L	Upon discharge	0	-	-	-	-	-	-	
	Conductivity	ms/cm		0	-	-	-	-	-	-	
	Oil & Grease	mg/L		0	-	-	-	-	-	-	
	pH	pH		0	-	-	-	-	-	-	
7	TSS	mg/L	Upon discharge	0	-	-	-	-	-	-	
	Conductivity	ms/cm		0	-	-	-	-	-	-	
	Oil & Grease	mg/L		0	-	-	-	-	-	-	
	pH	pH		0	-	-	-	-	-	-	
8	TSS	mg/L	Upon discharge	0	-	-	-	-	-	-	
	Conductivity	ms/cm		0	-	-	-	-	-	-	
	Oil & Grease	mg/L		0	-	-	-	-	-	-	
	pH	pH		0	-	-	-	-	-	-	

**Table 2 - Pollutant Limits Apply**

<b>EPL ID</b>	<b>Pollutant</b>	<b>Units of Measure</b>	<b>Monitoring &amp; Frequency</b>	<b>No. of Samples for the Month</b>	<b>Date Sampled</b>	<b>Date Obtained</b>	<b>Min Value</b>	<b>Max or Only Value</b>	<b>100%ile Limit</b>	<b>Exceedance (Yes/No)</b>	<b>Comments</b>
1	TSS	mg/L	Upon discharge	0	-	-	-	-	-	-	-
	Oil & Grease	mg/L		0	-	-	-	-	-	-	-
	pH	pH		0	-	-	-	-	-	-	-
2	TSS	mg/L	Upon discharge	0	-	-	-	-	-	-	-
	Oil & Grease	mg/L		0	-	-	-	-	-	-	-
	pH	pH		0	-	-	-	-	-	-	-
3	TSS	mg/L	Upon discharge	0	-	-	-	-	-	-	-
	Oil & Grease	mg/L		0	-	-	-	-	-	-	-
	pH	pH		0	-	-	-	-	-	-	-
24	TSS	mg/L	Upon discharge	0	-	-	-	-	-	-	-
	Oil & Grease	mg/L		0	-	-	-	-	-	-	-
	pH	pH		0	-	-	-	-	-	-	-
25	TSS	mg/L	Upon discharge	0	-	-	-	-	-	-	-
	Oil & Grease	mg/L		0	-	-	-	-	-	-	-
	pH	pH		0	-	-	-	-	-	-	-
26	TSS	mg/L	Upon discharge	0	-	-	-	-	-	-	-
	Oil & Grease	mg/L		0	-	-	-	-	-	-	-
	pH	pH		0	-	-	-	-	-	-	-
27	TSS	mg/L	Upon discharge	0	-	-	-	-	-	-	-
	Oil & Grease	mg/L		0	-	-	-	-	-	-	-
	pH	pH		0	-	-	-	-	-	-	-

**Table 3 – Monitoring (Quarterly & 6 Monthly – No Limits apply)**

<b>EPL ID</b>	<b>Pollutant</b>	<b>Units of Measure</b>	<b>Monitoring Frequency</b>	<b>No. of Samples for the Period</b>	<b>Date Sampled</b>	<b>Date Obtained</b>	<b>Min Value</b>	<b>Mean Value</b>	<b>Median Value</b>	<b>Max or Only Value</b>
9	Conductivity	ms/cm	6 monthly – (Mar- Sep)	-	-	-	-	-	-	-
	Lead	mg/L		-	-	-	-	-	-	-
	pH	pH		-	-	-	-	-	-	-
	Standing Water Level	metres		-	-	-	-	-	-	-
10	Conductivity	ms/cm	6 monthly – (Mar- Sep)	-	-	-	-	-	-	-
	Lead	mg/L		-	-	-	-	-	-	-
	pH	pH		-	-	-	-	-	-	-
	Standing Water Level	metres		-	-	-	-	-	-	-
11	Conductivity	ms/cm	6 monthly – (Mar- Sep)	-	-	-	-	-	-	-
	Lead	mg/L		-	-	-	-	-	-	-
	pH	pH		-	-	-	-	-	-	-
	Standing Water Level	metres		-	-	-	-	-	-	-
12	Conductivity	ms/cm	6 monthly – (Mar- Sep)	-	-	-	-	-	-	-
	Lead	mg/L		-	-	-	-	-	-	-
	pH	pH		-	-	-	-	-	-	-
	Standing Water Level	metres		-	-	-	-	-	-	-
13	Conductivity	ms/cm	Quarterly - (Feb, May, Aug, Nov)	-	-	-	-	-	-	-
	Oil & Grease	mg/L		-	-	-	-	-	-	-
	pH	pH		-	-	-	-	-	-	-
	TSS	mg/L		-	-	-	-	-	-	-

**Table 4 – Quarterly Monitoring (Noise – Limits Apply)-**

**Table 1 Performance Assessment – Operations**

EPL ID	Location	Date	Tarrowonga Coal Mine Contribution dBA				Criteria	Measurement Periods	Weather Compliant			Compliant
			LAeq(15minute) Day	LAeq(15minute) Evening	LAeq(15minute) Night	LA1(1minute) Night			Day	Eve	Night	
79a	Barbers Lagoon	10/12/2018	I/A	I/A	I/A	I/A	Day, Evening and Night – 35 dBA LAeq(15minute)	Day - 1.5 hrs Evening - 0.5 hrs Night – 1hrs	Yes	No	Yes	Yes
		11/12/2018	31	I/A	34	44			Yes	No	Yes	Yes
		12/12/2018	I/A	28	26	35			Yes	Yes	No	Yes
		13/12/2018	30	N/M	I/A	I/A			Yes	Yes	Yes	Yes
89	Bungalow	10/12/2018	28	I/A	I/A	I/A	Night – 45 dBA LA1(1minute)  Cumulative Day, Evening, Night 40 dBA LAeq(15minute)		No	Yes	No	Yes
		11/12/2018	I/A	I/A	28	42			No	No	No	Yes
		12/12/2018	I/A	25	25	32			Yes	Yes	Yes	Yes
		13/12/2018	I/A	I/A	30	38			No	No	Yes	Yes
60a	Coomalgah/ Matong	10/12/2018	32	I/A	I/A	I/A			Yes	Yes	No	Yes
		11/12/2018	I/A	I/A	30	43			No	Yes	No	Yes
		12/12/2018	27	I/A	I/A	I/A			Yes	Yes	Yes	Yes
		13/12/2018	26	I/A	32	I/A			No	Yes	Yes	Yes

Note:

I/A = Inaudible

N/M = Not Measurable

**Table 5 – Monthly Monitoring (Blasts – Limits Apply)**

Location	Parameter	Units of Measure	Frequency	No. of Blasts for the Month	Average Value	Max Value	100%ile Limit	(Potential) Non-compliance /breach	Date Obtained
Tarrawonga*	Blast Noise	dB (Lin Peak)	Every Blast	5	100.92	105.1	N/A	N/A	02/01/19
	Blast Vibration	mm/s	Every Blast	5	0.37	0.72	N/A	N/A	02/01/19
Coomalgah	Blast Noise	dB (Lin Peak)	Every Blast	5	97.06	98.80	120	Nil	02/01/19
	Blast Vibration	mm/s	Every Blast	5	0.31	0.74	10	Nil	02/01/19

*\*Mine owned property – no limit apply*

**Table 6- Monthly Monitoring (Dust PM10 – No Limits apply)**

Location	No. of samples required by licence	Lowest sample value	Mean of sample	Highest sample value
“Flixton” property* TEOM (µg/m <sup>3</sup> )	Continuous	10.3	35.83	172.2 <sup>#</sup>

*\*Mine owned property – no limit apply*

*# recorded during a regional dust storm event*



Figure 1 – EPL 12365 Onsite Monitoring Locations

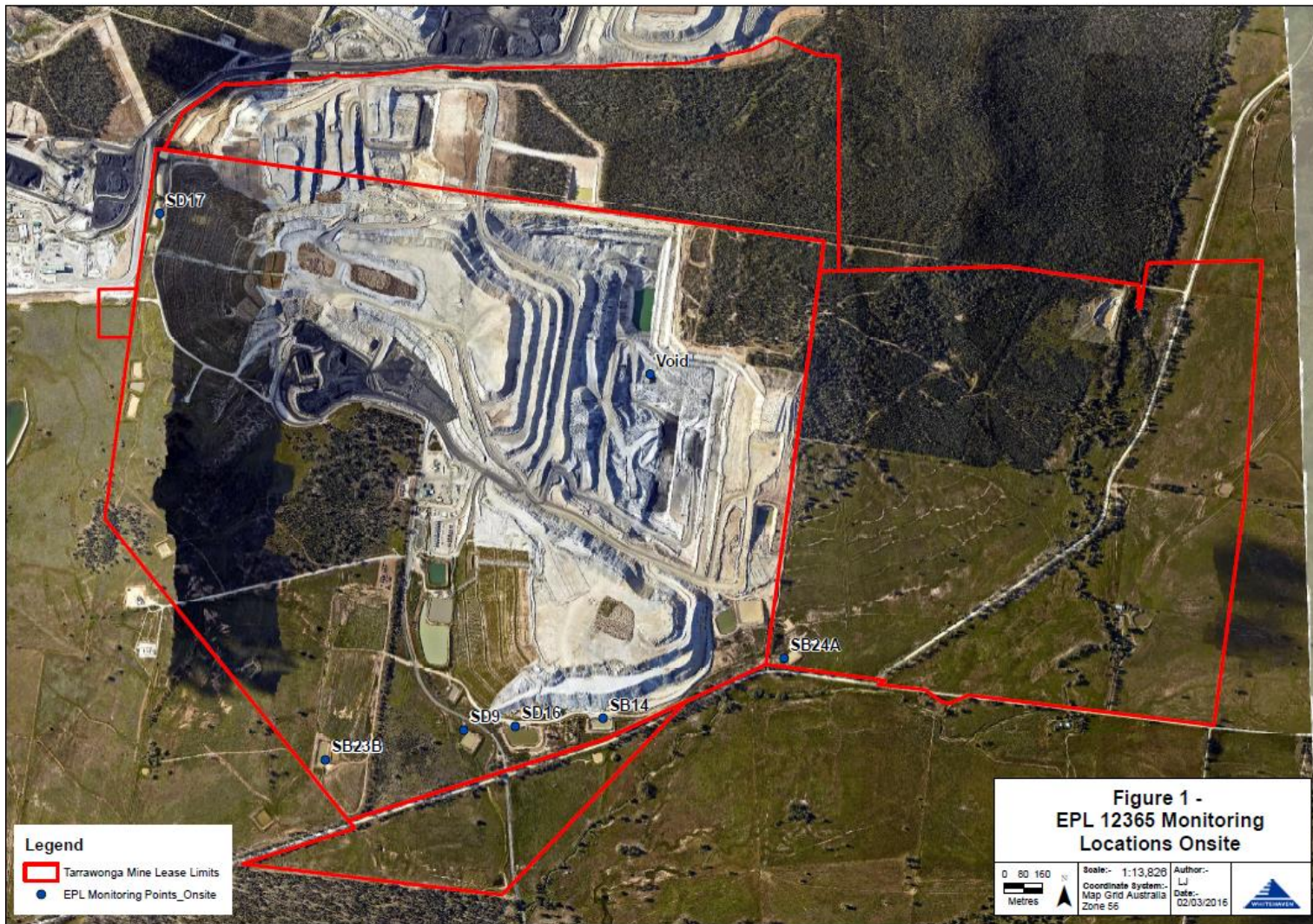




Figure 2 – EPL 12365 Offsite Monitoring Locations

