

TARRAWONGA COAL MINE – MONTHLY MONITORING SUMMARY

Site Information

EPL No: 12365

EPA Website Link: <http://www.environment.nsw.gov.au/prpoeoapp/ViewPOEOLicence.aspx?DOCID=32390&SYSUID=1&LICID=12365>

Licensee: Tarrawonga Coal Pty Ltd

Licensee Address: Tarrawonga Coal Mine, 469 Goonbri Road, BOGGABRI NSW 2382

EPL Monitoring Points: See Figure 1 below

Sampling Period: January 2015

Publication Date: 26th February 2015

Table 1 - No Pollutant Limits Apply

EPL ID	Pollutant	Units of Measure	Monitoring Frequency	No. of Samples for the Month	Date Sampled	Date Obtained	Min Value	Mean Value	Median Value	Max or Only Value
5	TSS	mg/L	Upon discharge	0	-	-	-	-	-	-
	Conductivity	ms/cm		0	-	-	-	-	-	-
	Oil & Grease	mg/L		0	-	-	-	-	-	-
	pH	pH		0	-	-	-	-	-	-
6	TSS	mg/L	Upon discharge	0	-	-	-	-	-	-
	Conductivity	ms/cm		0	-	-	-	-	-	-
	Oil & Grease	mg/L		0	-	-	-	-	-	-
	pH	pH		0	-	-	-	-	-	-
7	TSS	mg/L	Upon discharge	0	-	-	-	-	-	-
	Conductivity	ms/cm		0	-	-	-	-	-	-
	Oil & Grease	mg/L		0	-	-	-	-	-	-
	pH	pH		0	-	-	-	-	-	-
8	TSS	mg/L	Upon discharge	1	28/1/15	10/2/15	-	-	-	348
	Conductivity	ms/cm		1	28/1/15	10/2/15	-	-	-	189
	Oil & Grease	mg/L		1	28/1/15	10/2/15	-	-	-	<5
	pH	pH		1	28/1/15	10/2/15	-	-	-	7.01



Table 2 - Pollutant Limits Apply

EPL ID	Pollutant	Units of Measure	Monitoring Frequency	No. of Samples for the Month	Date Sampled	Date Obtained	Min Value	Max or Only Value	100%ile Limit	Exceedance (Yes/No)	Comments
1	TSS	mg/L	Upon discharge	0	-	-	-	-		-	-
	Oil & Grease	mg/L		0	-	-	-	-		-	-
	pH	pH		0	-	-	-	-		-	-
2	TSS	mg/L	Upon discharge	0	-	-	-	-		-	-
	Oil & Grease	mg/L		0	-	-	-	-		-	-
	pH	pH		0	-	-	-	-		-	-
3	TSS	mg/L	Upon discharge	0	-	-	-	-		-	-
	Oil & Grease	mg/L		0	-	-	-	-		-	-
	pH	pH		0	-	-	-	-		-	-
24	TSS	mg/L	Upon discharge	0	-	-	-	-		-	-
	Oil & Grease	mg/L		0	-	-	-	-		-	-
	pH	pH		0	-	-	-	-		-	-
25	TSS	mg/L	Upon discharge	0	-	-	-	-		-	-
	Oil & Grease	mg/L		0	-	-	-	-		-	-
	pH	pH		0	-	-	-	-		-	-
26	TSS	mg/L	Upon discharge	0	-	-	-	-		-	-
	Oil & Grease	mg/L		0	-	-	-	-		-	-
	pH	pH		0	-	-	-	-		-	-
27	TSS	mg/L	Upon discharge	0	-	-	-	-		-	-
	Oil & Grease	mg/L		0	-	-	-	-		-	-
	pH	pH		0	-	-	-	-		-	-

Table 3 – Monitoring (Quarterly & 6 Monthly – No Limits apply)

EPL ID	Pollutant	Units of Measure	Monitoring Frequency	No. of Samples for the Period	Date Sampled	Date Obtained	Min Value	Mean Value	Median Value	Max or Only Value
9	Conductivity	ms/cm	6 monthly	0	-	-	-	-	-	-
	Lead	mg/L		0	-	-	-	-	-	-
	pH	pH		0	-	-	-	-	-	-
	Standing Water Level	metres		0	-	-	-	-	-	-
10	Conductivity	ms/cm	6 monthly	0	-	-	-	-	-	-
	Lead	mg/L		0	-	-	-	-	-	-
	pH	pH		0	-	-	-	-	-	-
	Standing Water Level	metres		0	-	-	-	-	-	-
11	Conductivity	ms/cm	6 monthly	1	29/1/15	9/2/15	-	-	-	2050
	Lead	mg/L		1	29/1/15	9/2/15	-	-	-	<0.001
	pH	pH		1	29/1/15	9/2/15	-	-	-	7.92
	Standing Water Level	metres		1	29/1/15	9/2/15	-	-	-	10.47
12	Conductivity	ms/cm	6 monthly	0	-	-	-	-	-	-
	Lead	mg/L		0	-	-	-	-	-	-
	pH	pH		0	-	-	-	-	-	-
	Standing Water Level	metres		0	-	-	-	-	-	-
13	Conductivity	ms/cm	Quarterly	0	-	-	-	-	-	-
	Oil & Grease	mg/L		0	-	-	-	-	-	-
	pH	pH		0	-	-	-	-	-	-
	TSS	mg/L		0	-	-	-	-	-	-

Table 4 – Monitoring (Noise – Limits Apply)

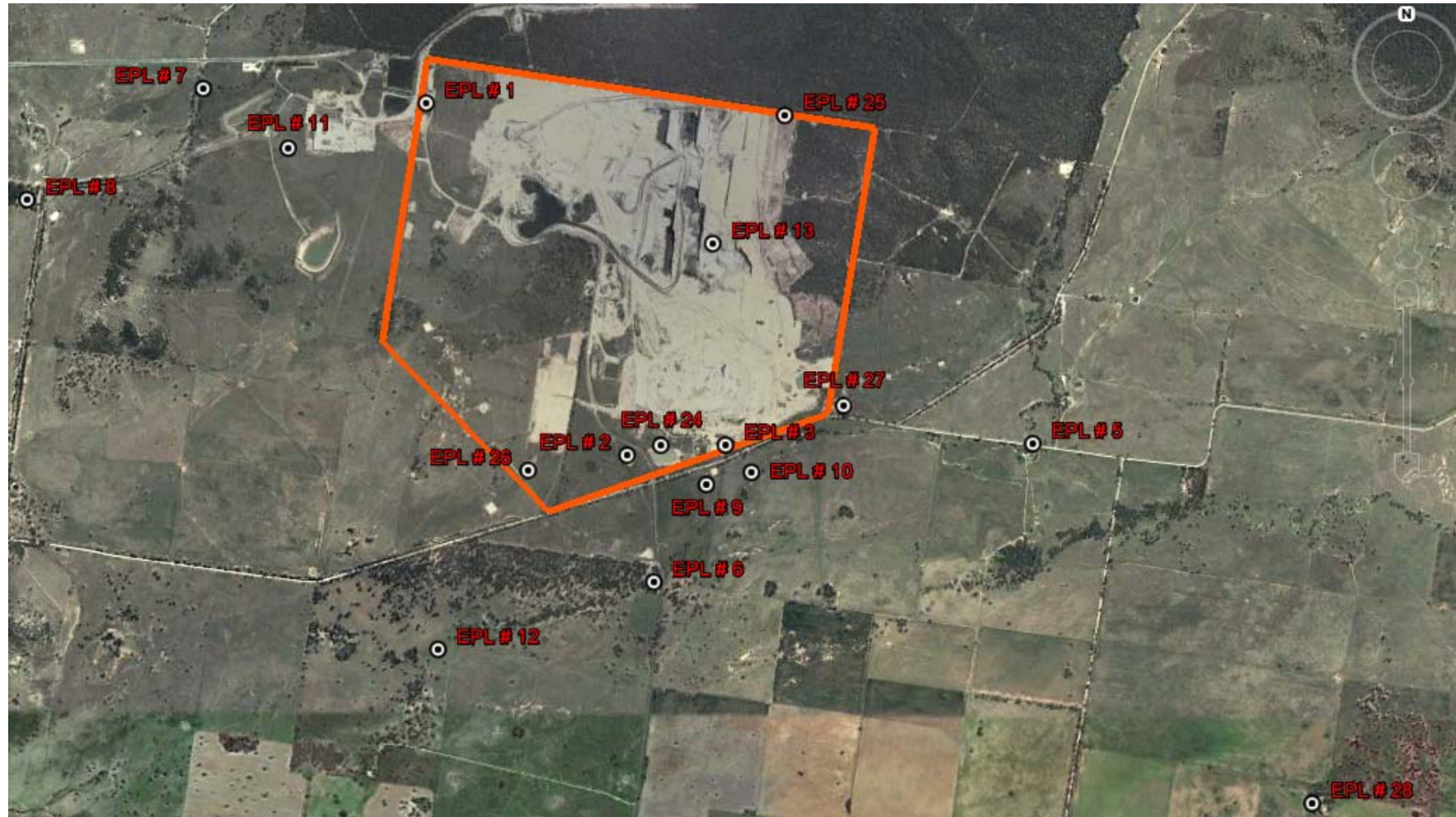
EPL ID	Date	Start Time	Measurement period	Measured Levels – dB(A)	Measured Levels – dB(A)	Measured Levels – dB(A)	Measured Levels – dB(A)	Limit	Weather	Compliant (Yes/No)	Comments
				L _{eq} 15min Day	L _{eq} 15min Evening	L _{eq} 15min Night	L _{A1} (1 min) Night				
N1											No monitoring undertaken during January

Note: Measured noise levels refer to noise attributable to Tarrawonga Coal Mine

Table 5 – Monitoring (Blasts – Limits Apply)

Location	Parameter	Units of Measure	Frequency	No. of Blasts for the Month	Average Value	Max Value	100%ile Limit	(Potential) Non-compliance /breach
Tarrawonga	Blast Noise	dB (Lin Peak)	Every Blast	7	102.3	127.3	120	Nil (EPA investigation deemed that no breach of license occurred)
	Blast Vibration	mm/s	Every Blast	7	0.34	0.78	10	Nil

Figure 1 – EPL 12365 Monitoring Locations



TARRAWONGA COAL MINE – MONTHLY MONITORING SUMMARY

Site Information

EPL No: 12365

EPA Website Link: <http://www.environment.nsw.gov.au/prpoeoapp/ViewPOEOLicence.aspx?DOCID=32390&SYSUID=1&LICID=12365>

Licensee: Tarrawonga Coal Pty Ltd

Licensee Address: Tarrawonga Coal Mine, 469 Goonbri Road, BOGGABRI NSW 2382

EPL Monitoring Points: See Figure 1 below

Sampling Period: February 2015

Publication Date: 1st April 2015

Table 1 - No Pollutant Limits Apply

EPL ID	Pollutant	Units of Measure	Monitoring Frequency	No. of Samples for the Month	Date Sampled	Date Obtained	Min Value	Mean Value	Median Value	Max or Only Value
5	TSS	mg/L	Upon discharge	0	-	-	-	-	-	-
	Conductivity	ms/cm		0	-	-	-	-	-	-
	Oil & Grease	mg/L		0	-	-	-	-	-	-
	pH	pH		0	-	-	-	-	-	-
6	TSS	mg/L	Upon discharge	0	-	-	-	-	-	-
	Conductivity	ms/cm		0	-	-	-	-	-	-
	Oil & Grease	mg/L		0	-	-	-	-	-	-
	pH	pH		0	-	-	-	-	-	-
7	TSS	mg/L	Upon discharge	0	-	-	-	-	-	-
	Conductivity	ms/cm		0	-	-	-	-	-	-
	Oil & Grease	mg/L		0	-	-	-	-	-	-
	pH	pH		0	-	-	-	-	-	-
8	TSS	mg/L	Upon discharge	0	-	-	-	-	-	-
	Conductivity	ms/cm		0	-	-	-	-	-	-
	Oil & Grease	mg/L		0	-	-	-	-	-	-
	pH	pH		0	-	-	-	-	-	-



Table 2 - Pollutant Limits Apply

EPL ID	Pollutant	Units of Measure	Monitoring Frequency	No. of Samples for the Month	Date Sampled	Date Obtained	Min Value	Max or Only Value	100%ile Limit	Exceedance (Yes/No)	Comments
1	TSS	mg/L	Upon discharge	0	-	-	-	-		-	-
	Oil & Grease	mg/L		0	-	-	-	-		-	-
	pH	pH		0	-	-	-	-		-	-
2	TSS	mg/L	Upon discharge	0	-	-	-	-		-	-
	Oil & Grease	mg/L		0	-	-	-	-		-	-
	pH	pH		0	-	-	-	-		-	-
3	TSS	mg/L	Upon discharge	0	-	-	-	-		-	-
	Oil & Grease	mg/L		0	-	-	-	-		-	-
	pH	pH		0	-	-	-	-		-	-
24	TSS	mg/L	Upon discharge	0	-	-	-	-		-	-
	Oil & Grease	mg/L		0	-	-	-	-		-	-
	pH	pH		0	-	-	-	-		-	-
25	TSS	mg/L	Upon discharge	0	-	-	-	-		-	-
	Oil & Grease	mg/L		0	-	-	-	-		-	-
	pH	pH		0	-	-	-	-		-	-
26	TSS	mg/L	Upon discharge	0	-	-	-	-		-	-
	Oil & Grease	mg/L		0	-	-	-	-		-	-
	pH	pH		0	-	-	-	-		-	-
27	TSS	mg/L	Upon discharge	0	-	-	-	-		-	-
	Oil & Grease	mg/L		0	-	-	-	-		-	-
	pH	pH		0	-	-	-	-		-	-

Table 3 – Monitoring (Quarterly & 6 Monthly – No Limits apply)

EPL ID	Pollutant	Units of Measure	Monitoring Frequency	No. of Samples for the Period	Date Sampled	Date Obtained	Min Value	Mean Value	Median Value	Max or Only Value
9	Conductivity	ms/cm	6 monthly	1	26/2/15	6/3/15	-	-	-	3420
	Lead	mg/L		1	26/2/15	6/3/15	-	-	-	0.003
	pH	pH		1	26/2/15	6/3/15	-	-	-	8.00
	Standing Water Level	metres		1	26/2/15	6/3/15	-	-	-	6.39
10	Conductivity	ms/cm	6 monthly	1	26/2/15	6/3/15	-	-	-	617
	Lead	mg/L		1	26/2/15	6/3/15	-	-	-	0.001
	pH	pH		1	26/2/15	6/3/15	-	-	-	7.59
	Standing Water Level	metres		1	26/2/15	6/3/15	-	-	-	6.32
11	Conductivity	ms/cm	6 monthly	0	-	-	-	-	-	-
	Lead	mg/L		0	-	-	-	-	-	-
	pH	pH		0	-	-	-	-	-	-
	Standing Water Level	metres		0	-	-	-	-	-	-
12	Conductivity	ms/cm	6 monthly	0	26/2/15	6/3/15	-	-	-	4430
	Lead	mg/L		0	26/2/15	6/3/15	-	-	-	0.002
	pH	pH		0	26/2/15	6/3/15	-	-	-	7.7
	Standing Water Level	metres		0	26/2/15	6/3/15	-	-	-	8.71
13	Conductivity	ms/cm	Quarterly	0	18/2/15	26/2/15	-	-	-	3170
	Oil & Grease	mg/L		0	18/2/15	26/2/15	-	-	-	<5
	pH	pH		0	18/2/15	26/2/15	-	-	-	8.72
	TSS	mg/L		0	18/2/15	26/2/15	-	-	-	10

Table 4 – Monitoring (Noise – Limits Apply)

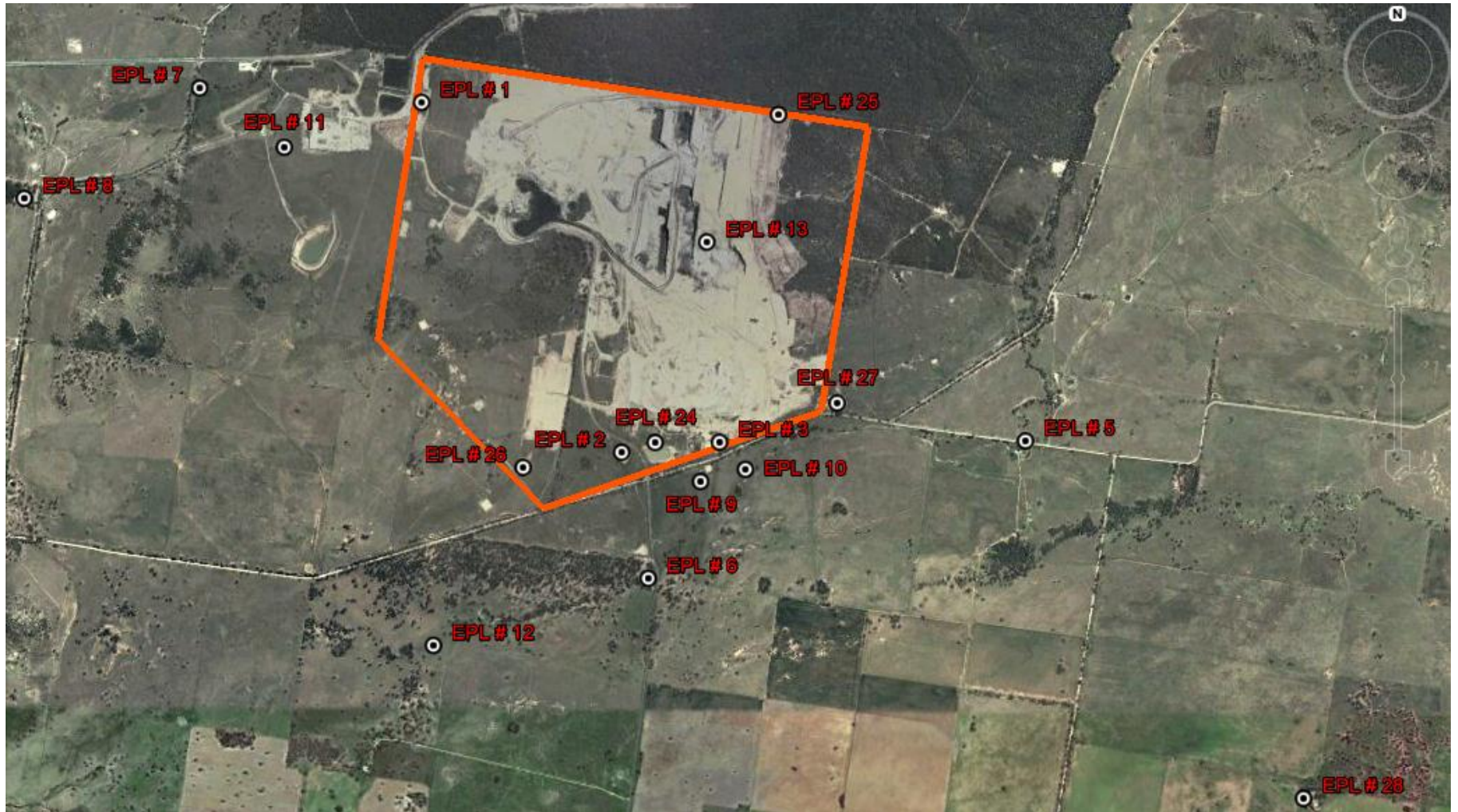
EPL ID	Date	Start Time	Measurement period	Measured Levels – dB(A)	Measured Levels – dB(A)	Measured Levels – dB(A)	Measured Levels – dB(A)	Limit	Weather	Compliant (Yes/No)	Comments
				L _{eq} 15min Day	L _{eq} 15min Evening	L _{eq} 15min Night	L _{A1} (1 min) Night				
N1											No monitoring undertaken

Note: Measured noise levels refer to noise attributable to Tarrawonga Coal Mine

Table 5 – Monitoring (Blasts – Limits Apply)

Location	Parameter	Units of Measure	Frequency	No. of Blasts for the Month	Average Value	Max Value	100%ile Limit	(Potential) Non-compliance /breach
Tarrawonga	Blast Noise	dB (Lin Peak)	Every Blast	8	97.1	110	120	Nil
	Blast Vibration	mm/s	Every Blast	8	0.27	0.42	5	Nil

Figure 1 – EPL 12365 Monitoring Locations





TARRAWONGA COAL MINE – MONTHLY MONITORING SUMMARY

Site Information

EPL No: 12365

EPA Website Link: <http://www.environment.nsw.gov.au/prpoeoapp/ViewPOEOLicence.aspx?DOCID=32390&SYSUID=1&LICID=12365>

Licensee: Tarrawonga Coal Pty Ltd

Licensee Address: Tarrawonga Coal Mine, 469 Goonbri Road, BOGGABRI NSW 2382

EPL Monitoring Points: See Figure 1 below

Sampling Period: March 2015

Publication Date: 24th April 2015

Table 1 - No Pollutant Limits Apply

EPL ID	Pollutant	Units of Measure	Monitoring Frequency	No. of Samples for the Month	Date Sampled	Date Obtained	Min Value	Mean Value	Median Value	Max or Only Value
5	TSS	mg/L	Upon discharge	0	-	-	-	-	-	-
	Conductivity	ms/cm		0	-	-	-	-	-	-
	Oil & Grease	mg/L		0	-	-	-	-	-	-
	pH	pH		0	-	-	-	-	-	-
6	TSS	mg/L	Upon discharge	0	-	-	-	-	-	-
	Conductivity	ms/cm		0	-	-	-	-	-	-
	Oil & Grease	mg/L		0	-	-	-	-	-	-
	pH	pH		0	-	-	-	-	-	-
7	TSS	mg/L	Upon discharge	0	-	-	-	-	-	-
	Conductivity	ms/cm		0	-	-	-	-	-	-
	Oil & Grease	mg/L		0	-	-	-	-	-	-
	pH	pH		0	-	-	-	-	-	-
8	TSS	mg/L	Upon discharge	0	-	-	-	-	-	-
	Conductivity	ms/cm		0	-	-	-	-	-	-
	Oil & Grease	mg/L		0	-	-	-	-	-	-
	pH	pH		0	-	-	-	-	-	-



Table 2 - Pollutant Limits Apply

EPL ID	Pollutant	Units of Measure	Monitoring Frequency	No. of Samples for the Month	Date Sampled	Date Obtained	Min Value	Max or Only Value	100%ile Limit	Exceedance (Yes/No)	Comments
1	TSS	mg/L	Upon discharge	0	-	-	-	-		-	-
	Oil & Grease	mg/L		0	-	-	-	-		-	-
	pH	pH		0	-	-	-	-		-	-
2	TSS	mg/L	Upon discharge	0	-	-	-	-		-	-
	Oil & Grease	mg/L		0	-	-	-	-		-	-
	pH	pH		0	-	-	-	-		-	-
3	TSS	mg/L	Upon discharge	0	-	-	-	-		-	-
	Oil & Grease	mg/L		0	-	-	-	-		-	-
	pH	pH		0	-	-	-	-		-	-
24	TSS	mg/L	Upon discharge	0	-	-	-	-		-	-
	Oil & Grease	mg/L		0	-	-	-	-		-	-
	pH	pH		0	-	-	-	-		-	-
25	TSS	mg/L	Upon discharge	0	-	-	-	-		-	-
	Oil & Grease	mg/L		0	-	-	-	-		-	-
	pH	pH		0	-	-	-	-		-	-
26	TSS	mg/L	Upon discharge	0	-	-	-	-		-	-
	Oil & Grease	mg/L		0	-	-	-	-		-	-
	pH	pH		0	-	-	-	-		-	-
27	TSS	mg/L	Upon discharge	0	-	-	-	-		-	-
	Oil & Grease	mg/L		0	-	-	-	-		-	-
	pH	pH		0	-	-	-	-		-	-

Table 3 – Monitoring (Quarterly & 6 Monthly – No Limits apply)

EPL ID	Pollutant	Units of Measure	Monitoring Frequency	No. of Samples for the Period	Date Sampled	Date Obtained	Min Value	Mean Value	Median Value	Max or Only Value
9	Conductivity	ms/cm	6 monthly	0	-	-	-	-	-	-
	Lead	mg/L		0	-	-	-	-	-	-
	pH	pH		0	-	-	-	-	-	-
	Standing Water Level	metres		0	-	-	-	-	-	-
10	Conductivity	ms/cm	6 monthly	0	-	-	-	-	-	-
	Lead	mg/L		0	-	-	-	-	-	-
	pH	pH		0	-	-	-	-	-	-
	Standing Water Level	metres		0	-	-	-	-	-	-
11	Conductivity	ms/cm	6 monthly	0	-	-	-	-	-	-
	Lead	mg/L		0	-	-	-	-	-	-
	pH	pH		0	-	-	-	-	-	-
	Standing Water Level	metres		0	-	-	-	-	-	-
12	Conductivity	ms/cm	6 monthly	0	-	-	-	-	-	-
	Lead	mg/L		0	-	-	-	-	-	-
	pH	pH		0	-	-	-	-	-	-
	Standing Water Level	metres		0	-	-	-	-	-	-
13	Conductivity	ms/cm	Quarterly	0	-	-	-	-	-	-
	Oil & Grease	mg/L		0	-	-	-	-	-	-
	pH	pH		0	-	-	-	-	-	-
	TSS	mg/L		0	-	-	-	-	-	-

Table 4 – Monitoring (Noise – Limits Apply)

EPL ID	Date	Start Time	Measurement period	Measured Levels – dB(A) Leq 15min Day	Measured Levels – dB(A) Leq 15min Evening	Measured Levels – dB(A) Leq 15min Night	Measured Levels – dB(A) LA1 (1 min) Night	Limit	Weather	Compliant (Yes/No)	Comments
TN2	23/3/15	9.46am	90	Inaudible				35	1.3/213	Yes	Nil
	23/3/15	7.48pm	30		Inaudible			35	0.9/1	Yes	
	23/3/15	10.02pm	60			Faintly Audible		35	1.7/1	Yes	
	23/3/15	10.02pm	60				20	45	1.7/1	Yes	
	24/3/15	7.28am	90	24				35	0.8/343	Yes	
	24/3/15	7.45pm	30		28			35	2.1/55	Yes	
	24/3/15	10.01pm	60			25		35	0.8/191	Yes	
	24/3/15	10.01pm	60				29	45	0.8/191	Yes	
	25/3/15	7.50am	90	30				35	1.0/174	Yes	
	25/3/15	9.08pm	30		27			35	1.1/350	Yes	
	25/3/15	12.29am	60			22		35	0.8/347	Yes	
	25/3/15	12.29am	60				25	45	0.8/347	Yes	
	26/3/15	8.17am	90	23				35	1.0/187	Yes	
	26/3/15	7.41pm	30		24			35	1.7/226	Yes	
26/3/15	10.15pm	60			27		35	0.6/251	Yes		
26/3/15	10.15pm	60				31	45	0.6/251	Yes		

Note: Measured noise levels refer to noise attributable to Tarrawonga Coal Mine

EPL ID	Date	Start Time	Measurement period	Measured Levels – dB(A) L _{eq} 15min Day	Measured Levels – dB(A) L _{eq} 15min Evening	Measured Levels – dB(A) L _{eq} 15min Night	Measured Levels – dB(A) L _{A1} (1 min) Night	Limit	Weather	Compliant (Yes/No)	Comments
TN3	23/3/15	1.39pm	90	Inaudible				35	2.3/272	Yes	Nil
	23/3/15	9.16pm	30		Inaudible			35	1.2/29	Yes	
	24/3/15	12.33am	60			Faintly audible		35	2.9/11	Yes	
	24/3/15	12.33am	60				19	45	2.9/11	Yes	
	24/3/15	11.06am	90	Inaudible				35	6.1/327	Yes	
	24/3/15	9.15pm	30		22			35	1.3/215	Yes	
	25/3/15	12.34am	60			27		35	1.4/209	Yes	
	25/3/15	12.34am	60				30	45	1.4/209	Yes	
	25/3/15	11.16am	90	Inaudible				35	1.6/207	Yes	
	25/3/15	7.38pm	30		Inaudible			35	1.0/308	Yes	
	25/3/15	10.00pm	60			Faintly Audible		35	0.6/341	Yes	
	25/3/15	10.00pm	60				n/a	45	0.6/341	Yes	
	26/3/15	11.44am	90	Inaudible				35	2.8/286	Yes	
	26/3/15	9.09pm	30		Inaudible			35	0.5/128	Yes	
	27/3/15	12.43am	60			Inaudible		35	0.7/199	Yes	
27/3/15	12.43am	60				n/a	45	0.7/199	Yes		

Note: Measured noise levels refer to noise attributable to Tarrawonga Coal Mine

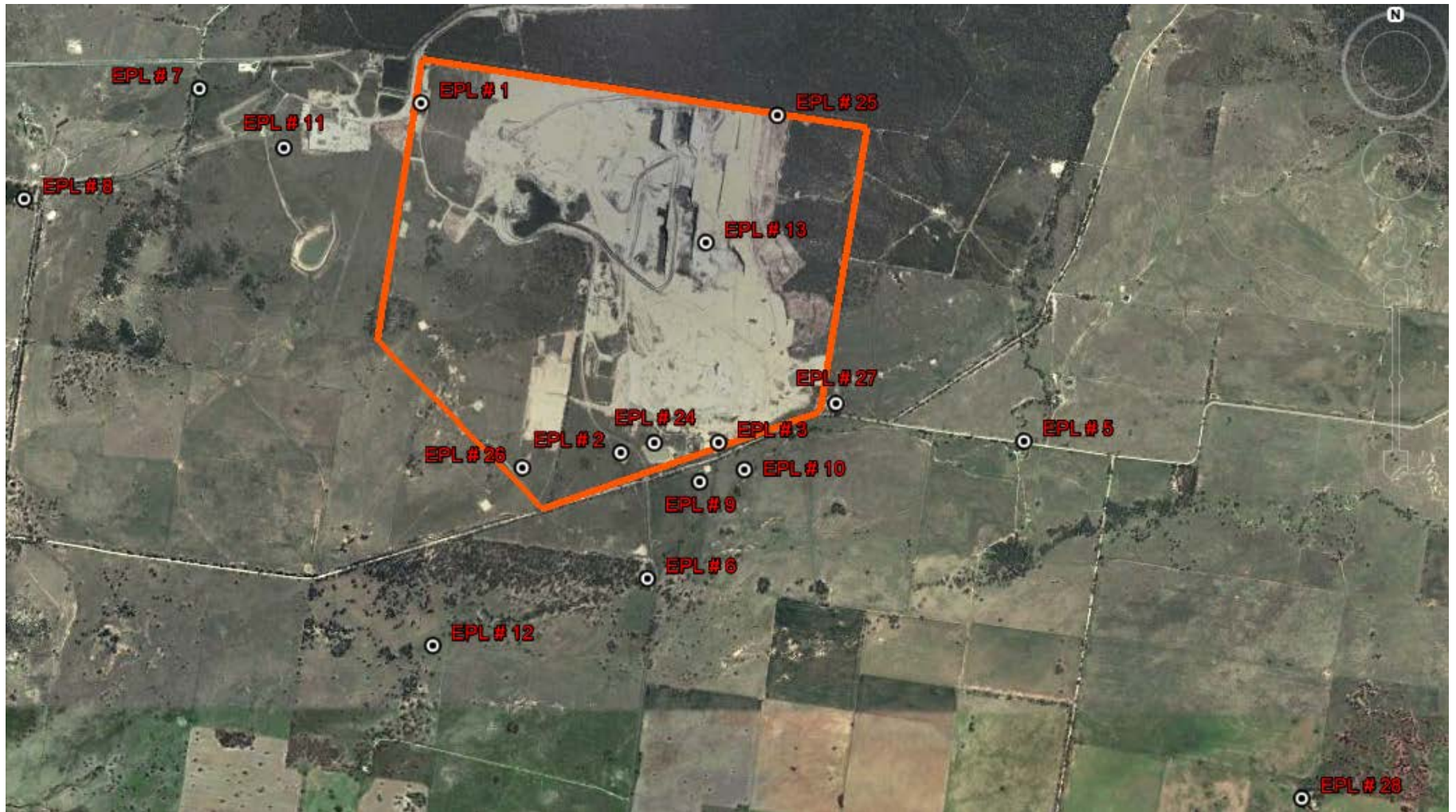
EPL ID	Date	Start Time	Measurement period	Measured Levels – dB(A) L _{eq} 15min Day	Measured Levels – dB(A) L _{eq} 15min Evening	Measured Levels – dB(A) L _{eq} 15min Night	Measured Levels – dB(A) L _{A1} (1 min) Night	Limit	Weather	Compliant (Yes/No)	Comments
TN4	23/3/15	11.26am	90	Inaudible				35	1.3/219	Yes	Nil
	23/3/15	8.32pm	30		Inaudible			35	1.0/24	Yes	
	23/3/15	11.12pm	60			Faintly Audible		35	1.6/351	Yes	
	23/3/15	11.12pm	60				19	45	1.6/351	Yes	
	24/3/15	9.19am	90	21				35	2.1/276	Yes	
	24/3/15	8.28pm	30		Inaudible			35	0.8/113	Yes	
	24/3/15	11.16pm	60			19		35	1.1/231	Yes	
	24/3/15	11.16pm	60				22	45	1.1/231	Yes	
	25/3/15	9.31am	90	Faintly audible				35	1.2/173	Yes	
	25/3/15	8.22pm	30		Inaudible			35	0.8/4	Yes	
	25/3/15	11.14pm	60			Inaudible		35	1.0/346	Yes	
	25/3/15	11.14pm	60				n/a		1.0/346	Yes	
	26/3/15	10.00am	90	Inaudible				35	0.8/190	Yes	
	26/3/15	8.23pm	30		Inaudible			35	1.7/226	Yes	
	26/3/15	11.28pm	60			Inaudible		35	0.8/217	Yes	
26/3/15	11.28pm	60				n/a		0.8/217	Yes		

Note: Measured noise levels refer to noise attributable to Tarrawonga Coal Mine

Table 5 – Monitoring (Blasts – Limits Apply)

Location	Parameter	Units of Measure	Frequency	No. of Blasts for the Month	Average Value	Max Value	100%ile Limit	(Potential) Non-compliance /breach
Tarrawonga	Blast Noise	dB (Lin Peak)	Every Blast	10	97.3	108.2	120	Nil
	Blast Vibration	mm/s	Every Blast	10	0.29	0.85	10	Nil

Figure 1 – EPL 12365 Monitoring Locations





WHITEHAVEN COAL

TARRAWONGA COAL MINE – MONTHLY MONITORING SUMMARY

Site Information

EPL No: 12365

EPA Website Link: <http://www.environment.nsw.gov.au/prpoeoapp/ViewPOEOLicence.aspx?DOCID=32390&SYSUID=1&LICID=12365>

Licensee: Tarrawonga Coal Pty Ltd

Licensee Address: Tarrawonga Coal Mine, 469 Goonbri Road, BOGGABRI NSW 2382

EPL Monitoring Points: See Figure 1 below

Sampling Period: April 2015

Publication Date: 2nd June 2015

Table 1 - No Pollutant Limits Apply

EPL ID	Pollutant	Units of Measure	Monitoring Frequency	No. of Samples for the Month	Date Sampled	Date Obtained	Min Value	Mean Value	Median Value	Max or Only Value
5	TSS	mg/L	Upon discharge	0	-	-	-	-	-	-
	Conductivity	ms/cm		0	-	-	-	-	-	-
	Oil & Grease	mg/L		0	-	-	-	-	-	-
	pH	pH		0	-	-	-	-	-	-
6	TSS	mg/L	Upon discharge	0	-	-	-	-	-	-
	Conductivity	ms/cm		0	-	-	-	-	-	-
	Oil & Grease	mg/L		0	-	-	-	-	-	-
	pH	pH		0	-	-	-	-	-	-
7	TSS	mg/L	Upon discharge	0	-	-	-	-	-	-
	Conductivity	ms/cm		0	-	-	-	-	-	-
	Oil & Grease	mg/L		0	-	-	-	-	-	-
	pH	pH		0	-	-	-	-	-	-
8	TSS	mg/L	Upon discharge	2	4/4/15; 21/4/15	13/4/15; 28/4/15	221	274	-	326
	Conductivity	ms/cm		2	4/4/15; 21/4/15	13/4/15; 28/4/15	185	199	-	213



WHITEHAVEN COAL

EPL ID	Pollutant	Units of Measure	Monitoring Frequency	No. of Samples for the Month	Date Sampled	Date Obtained	Min Value	Mean Value	Median Value	Max or Only Value
	Oil & Grease	mg/L		2	4/4/15; 21/4/15	13/4/15; 28/4/15	<5	<5	-	5
	pH	pH		2	4/4/15; 21/4/15	13/4/15; 28/4/15	7.18	7.2	-	7.21

Table 2 - Pollutant Limits Apply

EPL ID	Pollutant	Units of Measure	Monitoring Frequency	No. of Samples for the Month	Date Sampled	Date Obtained	Min Value	Max or Only Value	100%ile Limit	Exceedance (Yes/No)	Comments
1	TSS	mg/L	Upon discharge	0	-	-	-	-		-	-
	Oil & Grease	mg/L		0	-	-	-	-		-	-
	pH	pH		0	-	-	-	-		-	-
2	TSS	mg/L	Upon discharge	0	-	-	-	-		-	-
	Oil & Grease	mg/L		0	-	-	-	-		-	-
	pH	pH		0	-	-	-	-		-	-
3	TSS	mg/L	Upon discharge	0	-	-	-	-		-	-
	Oil & Grease	mg/L		0	-	-	-	-		-	-
	pH	pH		0	-	-	-	-		-	-
24	TSS	mg/L	Upon discharge	0	-	-	-	-		-	-
	Oil & Grease	mg/L		0	-	-	-	-		-	-
	pH	pH		0	-	-	-	-		-	-
25	TSS	mg/L	Upon discharge	0	-	-	-	-		-	-
	Oil & Grease	mg/L		0	-	-	-	-		-	-
	pH	pH		0	-	-	-	-		-	-
26	TSS	mg/L	Upon discharge	0	-	-	-	-		-	-
	Oil & Grease	mg/L		0	-	-	-	-		-	-
	pH	pH		0	-	-	-	-		-	-



EPL ID	Pollutant	Units of Measure	Monitoring Frequency	No. of Samples for the Month	Date Sampled	Date Obtained	Min Value	Max or Only Value	100%ile Limit	Exceedance (Yes/No)	Comments
27	TSS	mg/L	Upon discharge	0	-	-	-	-		-	-
	Oil & Grease	mg/L		0	-	-	-	-		-	-
	pH	pH		0	-	-	-	-		-	-

Table 3 – Monitoring (Quarterly & 6 Monthly – No Limits apply)

EPL ID	Pollutant	Units of Measure	Monitoring Frequency	No. of Samples for the Period	Date Sampled	Date Obtained	Min Value	Mean Value	Median Value	Max or Only Value
9	Conductivity	ms/cm	6 monthly	0	-	-	-	-	-	-
	Lead	mg/L		0	-	-	-	-	-	-
	pH	pH		0	-	-	-	-	-	-
	Standing Water Level	metres		0	-	-	-	-	-	-
10	Conductivity	ms/cm	6 monthly	0	-	-	-	-	-	-
	Lead	mg/L		0	-	-	-	-	-	-
	pH	pH		0	-	-	-	-	-	-
	Standing Water Level	metres		0	-	-	-	-	-	-
11	Conductivity	ms/cm	6 monthly	0	-	-	-	-	-	-
	Lead	mg/L		0	-	-	-	-	-	-
	pH	pH		0	-	-	-	-	-	-
	Standing Water Level	metres		0	-	-	-	-	-	-
12	Conductivity	ms/cm	6 monthly	0	-	-	-	-	-	-
	Lead	mg/L		0	-	-	-	-	-	-
	pH	pH		0	-	-	-	-	-	-



EPL ID	Pollutant	Units of Measure	Monitoring Frequency	No. of Samples for the Period	Date Sampled	Date Obtained	Min Value	Mean Value	Median Value	Max or Only Value
	Standing Water Level	metres		0	-	-	-	-	-	-
13	Conductivity	ms/cm	Quarterly	0	-	-	-	-	-	-
	Oil & Grease	mg/L		0	-	-	-	-	-	-
	pH	pH		0	-	-	-	-	-	-
	TSS	mg/L		0	-	-	-	-	-	-

Table 4 – Monitoring (Noise – Limits Apply)

EPL ID	Date	Start Time	Measurement period	Measured Levels – dB(A) L _{eq} 15min Day	Measured Levels – dB(A) L _{eq} 15min Evening	Measured Levels – dB(A) L _{eq} 15min Night	Measured Levels – dB(A) L _{A1} (1 min) Night	Limit	Weather	Compliant (Yes/No)	Comments
N1											



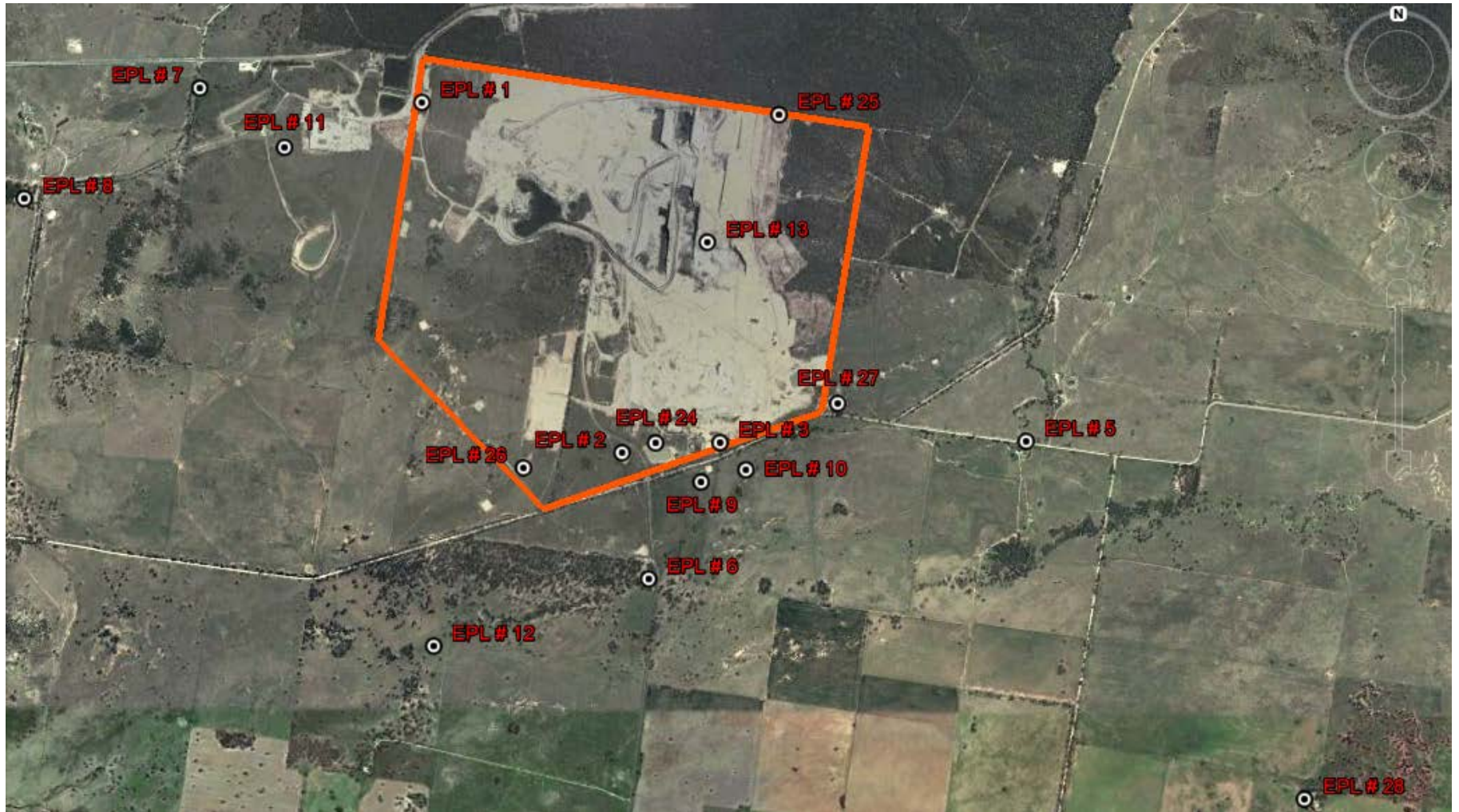
Note: Measured noise levels refer to noise attributable to Tarrawonga Coal Mine

Table 5 – Monitoring (Blasts – Limits Apply)

Location	Parameter	Units of Measure	Frequency	No. of Blasts for the Month	Average Value	Max Value	100%ile Limit	(Potential) Non-compliance /breach
Tarrawonga	Blast Noise	dB (Lin Peak)	Every Blast	5	101.3	110.3	120	Nil
	Blast Vibration	mm/s	Every Blast	5	0.37	0.79	10	Nil



Figure 1 – EPL 12365 Monitoring Locations





WHITEHAVEN COAL

TARRAWONGA COAL MINE – MONTHLY MONITORING SUMMARY

Site Information

EPL No: 12365

EPA Website Link: <http://www.environment.nsw.gov.au/prpoeoapp/ViewPOEOLicence.aspx?DOCID=32390&SYSUID=1&LICID=12365>

Licensee: Tarrawonga Coal Pty Ltd

Licensee Address: Tarrawonga Coal Mine, 469 Goonbri Road, BOGGABRI NSW 2382

EPL Monitoring Points: See Figure 1 below

Sampling Period: May 2015

Publication Date: 5th August 2015

Table 1 - No Pollutant Limits Apply

EPL ID	Pollutant	Units of Measure	Monitoring Frequency	No. of Samples for the Month	Date Sampled	Date Obtained	Min Value	Mean Value	Median Value	Max or Only Value
5	TSS	mg/L	Upon discharge	0	-	-	-	-	-	-
	Conductivity	ms/cm		0	-	-	-	-	-	-
	Oil & Grease	mg/L		0	-	-	-	-	-	-
	pH	pH		0	-	-	-	-	-	-
6	TSS	mg/L	Upon discharge	0	-	-	-	-	-	-
	Conductivity	ms/cm		0	-	-	-	-	-	-
	Oil & Grease	mg/L		0	-	-	-	-	-	-
	pH	pH		0	-	-	-	-	-	-
7	TSS	mg/L	Upon discharge	0	-	-	-	-	-	-
	Conductivity	ms/cm		0	-	-	-	-	-	-
	Oil & Grease	mg/L		0	-	-	-	-	-	-
	pH	pH		0	-	-	-	-	-	-
8	TSS	mg/L	Upon discharge	0	-	-	-	-	-	-
	Conductivity	ms/cm		0	-	-	-	-	-	-
	Oil & Grease	mg/L		0	-	-	-	-	-	-
	pH	pH		0	-	-	-	-	-	-



Table 2 - Pollutant Limits Apply

EPL ID	Pollutant	Units of Measure	Monitoring Frequency	No. of Samples for the Month	Date Sampled	Date Obtained	Min Value	Max or Only Value	100%ile Limit	Exceedance (Yes/No)	Comments
1	TSS	mg/L	Upon discharge	0	-	-	-	-		-	-
	Oil & Grease	mg/L		0	-	-	-	-		-	-
	pH	pH		0	-	-	-	-		-	-
2	TSS	mg/L	Upon discharge	0	-	-	-	-		-	-
	Oil & Grease	mg/L		0	-	-	-	-		-	-
	pH	pH		0	-	-	-	-		-	-
3	TSS	mg/L	Upon discharge	0	-	-	-	-		-	-
	Oil & Grease	mg/L		0	-	-	-	-		-	-
	pH	pH		0	-	-	-	-		-	-
24	TSS	mg/L	Upon discharge	0	-	-	-	-		-	-
	Oil & Grease	mg/L		0	-	-	-	-		-	-
	pH	pH		0	-	-	-	-		-	-
25	TSS	mg/L	Upon discharge	0	-	-	-	-		-	-
	Oil & Grease	mg/L		0	-	-	-	-		-	-
	pH	pH		0	-	-	-	-		-	-
26	TSS	mg/L	Upon discharge	0	-	-	-	-		-	-
	Oil & Grease	mg/L		0	-	-	-	-		-	-
	pH	pH		0	-	-	-	-		-	-
27	TSS	mg/L	Upon discharge	0	-	-	-	-		-	-
	Oil & Grease	mg/L		0	-	-	-	-		-	-
	pH	pH		0	-	-	-	-		-	-



Table 3 – Monitoring (Quarterly & 6 Monthly – No Limits apply)

EPL ID	Pollutant	Units of Measure	Monitoring Frequency	No. of Samples for the Period	Date Sampled	Date Obtained	Min Value	Mean Value	Median Value	Max or Only Value
9	Conductivity	ms/cm	6 monthly	0	-	-	-	-	-	-
	Lead	mg/L		0	-	-	-	-	-	-
	pH	pH		0	-	-	-	-	-	-
	Standing Water Level	metres		0	-	-	-	-	-	-
10	Conductivity	ms/cm	6 monthly	0	-	-	-	-	-	-
	Lead	mg/L		0	-	-	-	-	-	-
	pH	pH		0	-	-	-	-	-	-
	Standing Water Level	metres		0	-	-	-	-	-	-
11	Conductivity	ms/cm	6 monthly	0	-	-	-	-	-	-
	Lead	mg/L		0	-	-	-	-	-	-
	pH	pH		0	-	-	-	-	-	-
	Standing Water Level	metres		0	-	-	-	-	-	-
12	Conductivity	ms/cm	6 monthly	0	-	-	-	-	-	-
	Lead	mg/L		0	-	-	-	-	-	-
	pH	pH		0	-	-	-	-	-	-
	Standing Water Level	metres		0	-	-	-	-	-	-
13	Conductivity	ms/cm	Quarterly	1	7/5/15	7/5/15	-	-	-	2910
	Oil & Grease	mg/L		1	7/5/15	7/5/15	-	-	-	<5
	pH	pH		1	7/5/15	7/5/15	-	-	-	8.62
	TSS	mg/L		1	7/5/15	7/5/15	-	-	-	5



Table 4 – Monitoring (Noise – Limits Apply)

EPL ID	Date	Start Time	Measurement period	Measured Levels – dB(A) Leq 15min Day	Measured Levels – dB(A) Leq 15min Evening	Measured Levels – dB(A) Leq 15min Night	Measured Levels – dB(A) LA1 (1 min) Night	Limit	Weather	Compliant (Yes/No)	Comments
											No monitoring undertaken

Note: Measured noise levels refer to noise attributable to Tarrawonga Coal Mine

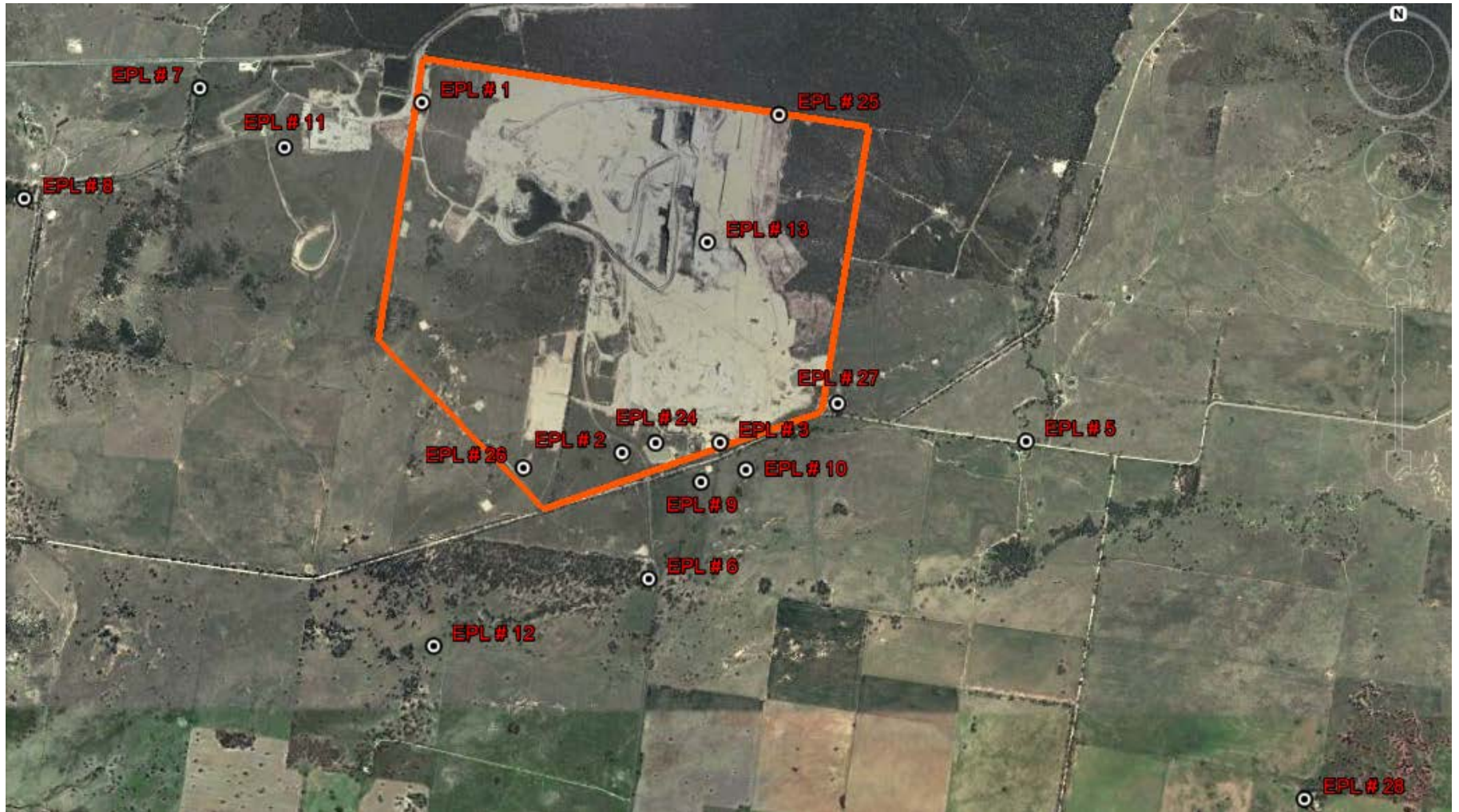


Table 5 – Monitoring (Blasts – Limits Apply)

Location	Parameter	Units of Measure	Frequency	No. of Blasts for the Month	Average Value	Max Value	100%ile Limit	(Potential) Non-compliance /breach
Tarrawonga	Blast Noise	dB (Lin Peak)	Every Blast	7	102.7	109.1	120	Nil
	Blast Vibration	mm/s	Every Blast	7	0.26	0.63	10	Nil



Figure 1 – EPL 12365 Monitoring Locations





WHITEHAVEN COAL

TARRAWONGA COAL MINE – MONTHLY MONITORING SUMMARY

Site Information

EPL No: 12365

EPA Website Link: <http://www.environment.nsw.gov.au/prpoeoapp/ViewPOEOLicence.aspx?DOCID=32390&SYSUID=1&LICID=12365>

Licensee: Tarrawonga Coal Pty Ltd

Licensee Address: Tarrawonga Coal Mine, 469 Goonbri Road, BOGGABRI NSW 2382

EPL Monitoring Points: See Figure 1 below

Sampling Period: June 2015

Publication Date: 5 August 2015

Table 1 - No Pollutant Limits Apply

EPL ID	Pollutant	Units of Measure	Monitoring Frequency	No. of Samples for the Month	Date Sampled	Date Obtained	Min Value	Mean Value	Median Value	Max or Only Value
5	TSS	mg/L	Upon discharge	0	-	-	-	-	-	-
	Conductivity	ms/cm		0	-	-	-	-	-	-
	Oil & Grease	mg/L		0	-	-	-	-	-	-
	pH	pH		0	-	-	-	-	-	-
6	TSS	mg/L	Upon discharge	0	-	-	-	-	-	-
	Conductivity	ms/cm		0	-	-	-	-	-	-
	Oil & Grease	mg/L		0	-	-	-	-	-	-
	pH	pH		0	-	-	-	-	-	-
7	TSS	mg/L	Upon discharge	0	-	-	-	-	-	-
	Conductivity	ms/cm		0	-	-	-	-	-	-
	Oil & Grease	mg/L		0	-	-	-	-	-	-
	pH	pH		0	-	-	-	-	-	-
8	TSS	mg/L	Upon discharge	1	17/6/15	-	-	-	-	192
	Conductivity	ms/cm		1	17/6/15	-	-	-	-	197
	Oil & Grease	mg/L		1	17/6/15	-	-	-	-	<5
	pH	pH		1	17/6/15	-	-	-	-	7.19



Table 2 - Pollutant Limits Apply

EPL ID	Pollutant	Units of Measure	Monitoring Frequency	No. of Samples for the Month	Date Sampled	Date Obtained	Min Value	Max or Only Value	100%ile Limit	Exceedance (Yes/No)	Comments
1	TSS	mg/L	Upon discharge	0	-	-	-	-		-	-
	Oil & Grease	mg/L		0	-	-	-	-		-	-
	pH	pH		0	-	-	-	-		-	-
2	TSS	mg/L	Upon discharge	0	-	-	-	-		-	-
	Oil & Grease	mg/L		0	-	-	-	-		-	-
	pH	pH		0	-	-	-	-		-	-
3	TSS	mg/L	Upon discharge	0	-	-	-	-		-	-
	Oil & Grease	mg/L		0	-	-	-	-		-	-
	pH	pH		0	-	-	-	-		-	-
24	TSS	mg/L	Upon discharge	0	-	-	-	-		-	-
	Oil & Grease	mg/L		0	-	-	-	-		-	-
	pH	pH		0	-	-	-	-		-	-
25	TSS	mg/L	Upon discharge	0	-	-	-	-		-	-
	Oil & Grease	mg/L		0	-	-	-	-		-	-
	pH	pH		0	-	-	-	-		-	-
26	TSS	mg/L	Upon discharge	0	-	-	-	-		-	-
	Oil & Grease	mg/L		0	-	-	-	-		-	-
	pH	pH		0	-	-	-	-		-	-
27	TSS	mg/L	Upon discharge	0	-	-	-	-		-	-
	Oil & Grease	mg/L		0	-	-	-	-		-	-
	pH	pH		0	-	-	-	-		-	-



Table 3 – Monitoring (Quarterly & 6 Monthly – No Limits apply)

EPL ID	Pollutant	Units of Measure	Monitoring Frequency	No. of Samples for the Period	Date Sampled	Date Obtained	Min Value	Mean Value	Median Value	Max or Only Value
9	Conductivity	ms/cm	6 monthly	0	-	-	-	-	-	-
	Lead	mg/L		0	-	-	-	-	-	-
	pH	pH		0	-	-	-	-	-	-
	Standing Water Level	metres		0	-	-	-	-	-	-
10	Conductivity	ms/cm	6 monthly	0	-	-	-	-	-	-
	Lead	mg/L		0	-	-	-	-	-	-
	pH	pH		0	-	-	-	-	-	-
	Standing Water Level	metres		0	-	-	-	-	-	-
11	Conductivity	ms/cm	6 monthly	0	-	-	-	-	-	-
	Lead	mg/L		0	-	-	-	-	-	-
	pH	pH		0	-	-	-	-	-	-
	Standing Water Level	metres		0	-	-	-	-	-	-
12	Conductivity	ms/cm	6 monthly	0	-	-	-	-	-	-
	Lead	mg/L		0	-	-	-	-	-	-
	pH	pH		0	-	-	-	-	-	-
	Standing Water Level	metres		0	-	-	-	-	-	-
13	Conductivity	ms/cm	Quarterly	0	-	-	-	-	-	-
	Oil & Grease	mg/L		0	-	-	-	-	-	-
	pH	pH		0	-	-	-	-	-	-
	TSS	mg/L		0	-	-	-	-	-	-



Table 4 – Monitoring (Noise – Limits Apply)

EPL ID	Date	Start Time	Measurement period	Measured Levels – dB(A) Leq 15min Day	Measured Levels – dB(A) Leq 15min Evening	Measured Levels – dB(A) Leq 15min Night	Measured Levels – dB(A) LA1 (1 min) Night	Limit	Weather	Compliant (Yes/No)	Comments
TN2 – Matong	9/6/15	10.24am	90	35				35	3.7/306	Yes	
	9/6/15	8.42pm	30		<20			35	1.0/334	Yes	
	10/6/15	12.35am	60			<20		35	0.6/40	Yes	
	10/6/15	12.35	60				22	45	0.6/40	Yes	
	10/6/15	8.54am	90	27				35	1.6/187	Yes	
	10/6/15	7.25pm	30		<20			35	1.3/171	Yes	
	10/6/15	10.14pm	60			<20		35	1.7/174	Yes	
	10/6/15	10.14pm	60				<20	45	1.7/174	Yes	
	11/6/15	10.30am	90	<20				35	4.6/123	Yes	
	11/6/15	7.50pm	30		<20			35	0.6/74	Yes	
	11/6/15	10.04pm	60			<20		35	1.4/145	Yes	
	11/6/15	10.04pm	60				<20	45	1.4/145	Yes	
	12/6/15	10.46am	90	<20				35	4.9/128	Yes	
	12/6/15	8.31pm	30		<20			35	0.5/359	Yes	
	12/6/15	10.10pm	60			<20		35	0.2/348	Yes	
12/6/15	10.10pm	60				20	45	0.2/348	Yes		

Note: Measured noise levels refer to noise attributable to Tarrawonga Coal Mine



Table 5 – Monitoring (Noise – Limits Apply)

EPL ID	Date	Start Time	Measurement period	Measured Levels – dB(A) Leq 15min Day	Measured Levels – dB(A) Leq 15min Evening	Measured Levels – dB(A) Leq 15min Night	Measured Levels – dB(A) LA1 (1 min) Night	Limit	Weather	Compliant (Yes/No)	Comments
TN3 – Barbers Lagoon	9/6/15	7.00am	90	29				35	0.3/10	Yes	
	9/6/15	9.27pm	30		<20			35	0.7/313	Yes	
	10/6/15	1.49am	60			31		35	0.7/343	Yes	
	10/6/15	1.49am	60				34	45	0.7/343	Yes	
	10/6/15	2.11pm	90	<20				35	3.2/163	Yes	
	10/6/15	9.30pm	30		34			35	0.7/285	Yes	
	11/6/15	2.03am	60			33		35	0.5/188	Yes	
	11/6/15	2.03am	60				37	45	0.5/188	Yes	
	11/6/15	12.16pm	90	<20				35	4.4/135	Yes	
	11/6/15	8.36pm	30		31			35	0.9/149	Yes	
	11/6/15	11.22pm	60			32		35	0.9/172	Yes	
	11/6/15	11.22pm	60				37	45	0.9/172	Yes	
	12/6/15	9.01am	90	27				35	4.2/126	Yes	
	12/6/15	9.25pm	30		28			35	0.3/330	Yes	
	12/6/15	11.26pm	60			29		35	0.3/331	Yes	
12/6/15	11.26pm	60				34	45	0.3/331	Yes		

Note: Measured noise levels refer to noise attributable to Tarrawonga Coal Mine



Table 6 – Monitoring (Noise – Limits Apply)

EPL ID	Date	Start Time	Measurement period	Measured Levels – dB(A) Leq 15min Day	Measured Levels – dB(A) Leq 15min Evening	Measured Levels – dB(A) Leq 15min Night	Measured Levels – dB(A) LA1 (1 min) Night	Limit	Weather	Compliant (Yes/No)	Comments
TN4 - Bungalow	9/6/15	8.41am	90	33 (26) ¹				35	0.7/169	Yes	
	9/6/15	7.31pm	30		22 ¹			35	0.9/349	Yes	
	10/6/15	12.38am	60			<20		35	0.6/40	Yes	
	10/6/15	12.38am	60				<20	45	0.6/40	Yes	
	10/6/15	11.00am	90	34				35	2.8/173	Yes	
	10/6/15	9.30am	30		31 (27) ¹			35	2.8/173	Yes	
	11/6/15	12.36am	60			30		35	2.6/131	Yes	
	11/6/15	12.36am	60				35	45	2.6/131	Yes	
	11/6/15	2.01pm	90	<20				35	4.1/141	Yes	
	11/6/15	9.18pm	30		31			35	0.7/152	Yes	
	12/6/15	12.36am	60			27		35	0.7/204	Yes	
	12/6/15	12.36am	60				32	45	0.7/204	Yes	
	12/6/15	12.34pm	90	24				35	3.8/141	Yes	
	12/6/15	9.20pm	30		26			35	0.3/330	Yes	
	12/6/15	10.00pm	60			27		35	0.3/341	Yes	
12/6/15	10.00pm	60				32	45	0.3/341	Yes		

1. TCM haul trucks on haul road

Note: Measured noise levels refer to noise attributable to Tarrawonga Coal Mine

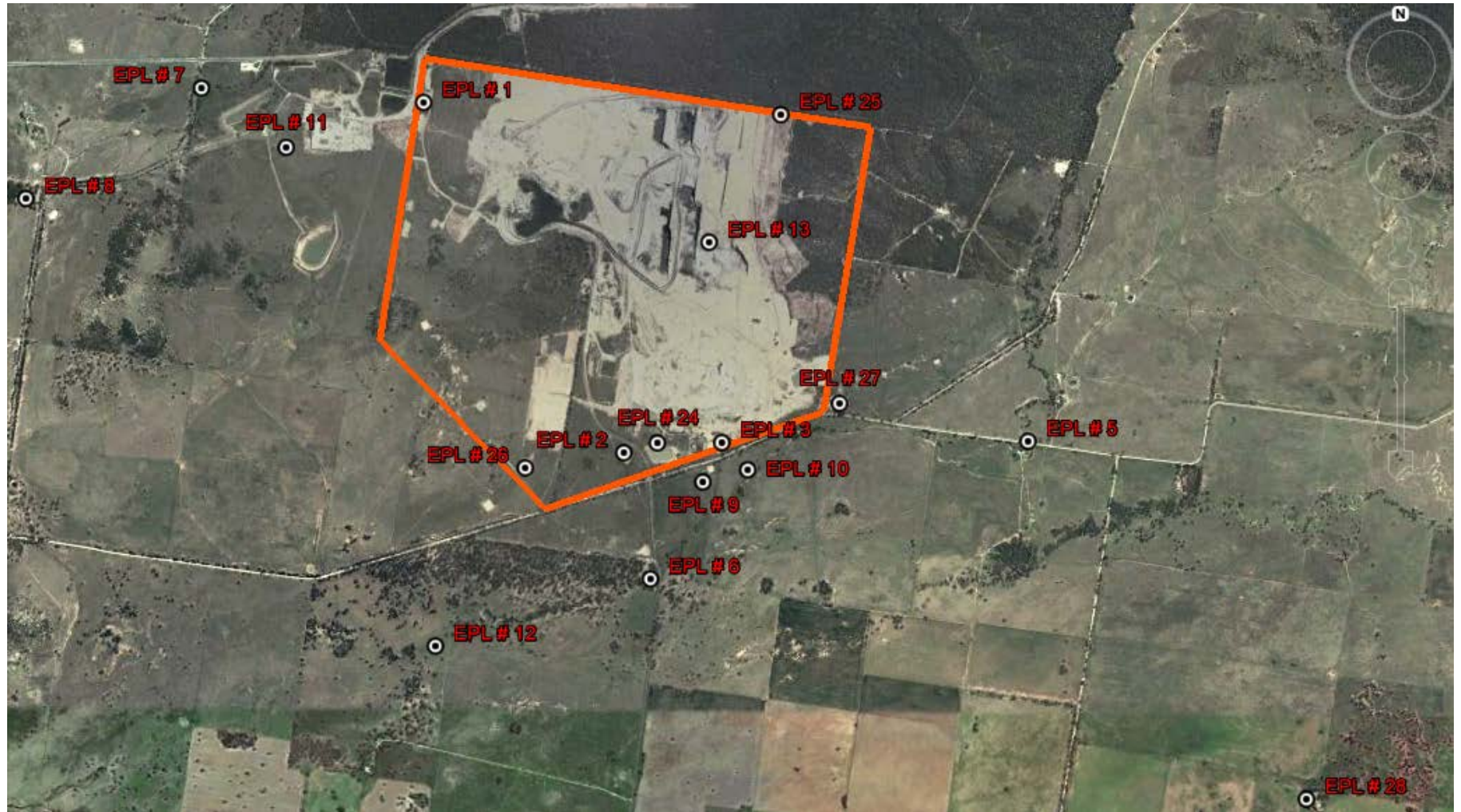


Table 7 – Monitoring (Blasts – Limits Apply)

Location	Parameter	Units of Measure	Frequency	No. of Blasts for the Month	Average Value	Max Value	100%ile Limit	(Potential) Non-compliance /breach
Tarrawonga	Blast Noise	dB (Lin Peak)	Every Blast	8	100.9	117.5	120	Nil
	Blast Vibration	mm/s	Every Blast	8	0.29	0.71	10	Nil



Figure 1 – EPL 12365 Monitoring Locations





WHITEHAVEN COAL

TARRAWONGA COAL MINE – MONTHLY MONITORING SUMMARY

Site Information

EPL No: 12365

EPA Website Link: <http://www.environment.nsw.gov.au/prpoeoapp/ViewPOEOLicence.aspx?DOCID=32390&SYSUID=1&LICID=12365>

Licensee: Tarrawonga Coal Pty Ltd

Licensee Address: Tarrawonga Coal Mine, 469 Goonbri Road, BOGGABRI NSW 2382

EPL Monitoring Points: See Figure 1 below

Sampling Period: July 2015

Publication Date: 28 August 2015

Table 1 - No Pollutant Limits Apply

EPL ID	Pollutant	Units of Measure	Monitoring Frequency	No. of Samples for the Month	Date Sampled	Date Obtained	Min Value	Mean Value	Median Value	Max or Only Value
5	TSS	mg/L	Upon discharge	0	-	-	-	-	-	-
	Conductivity	ms/cm		0	-	-	-	-	-	-
	Oil & Grease	mg/L		0	-	-	-	-	-	-
	pH	pH		0	-	-	-	-	-	-
6	TSS	mg/L	Upon discharge	0	-	-	-	-	-	-
	Conductivity	ms/cm		0	-	-	-	-	-	-
	Oil & Grease	mg/L		0	-	-	-	-	-	-
	pH	pH		0	-	-	-	-	-	-
7	TSS	mg/L	Upon discharge	0	-	-	-	-	-	-
	Conductivity	ms/cm		0	-	-	-	-	-	-
	Oil & Grease	mg/L		0	-	-	-	-	-	-
	pH	pH		0	-	-	-	-	-	-
8	TSS	mg/L	Upon discharge	0	-	-	-	-	-	-
	Conductivity	ms/cm		0	-	-	-	-	-	-
	Oil & Grease	mg/L		0	-	-	-	-	-	-



WHITEHAVEN COAL

EPL ID	Pollutant	Units of Measure	Monitoring Frequency	No. of Samples for the Month	Date Sampled	Date Obtained	Min Value	Mean Value	Median Value	Max or Only Value
	pH	pH		0	-	-	-	-	-	-

Table 2 - Pollutant Limits Apply

EPL ID	Pollutant	Units of Measure	Monitoring Frequency	No. of Samples for the Month	Date Sampled	Date Obtained	Min Value	Max or Only Value	100%ile Limit	Exceedance (Yes/No)	Comments
1	TSS	mg/L	Upon discharge	0	-	-	-	-		-	-
	Oil & Grease	mg/L		0	-	-	-	-		-	-
	pH	pH		0	-	-	-	-		-	-
2	TSS	mg/L	Upon discharge	0	-	-	-	-		-	-
	Oil & Grease	mg/L		0	-	-	-	-		-	-
	pH	pH		0	-	-	-	-		-	-
3	TSS	mg/L	Upon discharge	0	-	-	-	-		-	-
	Oil & Grease	mg/L		0	-	-	-	-		-	-
	pH	pH		0	-	-	-	-		-	-
24	TSS	mg/L	Upon discharge	0	-	-	-	-		-	-
	Oil & Grease	mg/L		0	-	-	-	-		-	-
	pH	pH		0	-	-	-	-		-	-
25	TSS	mg/L	Upon discharge	0	-	-	-	-		-	-
	Oil & Grease	mg/L		0	-	-	-	-		-	-
	pH	pH		0	-	-	-	-		-	-
26	TSS	mg/L	Upon discharge	0	-	-	-	-		-	-
	Oil & Grease	mg/L		0	-	-	-	-		-	-
	pH	pH		0	-	-	-	-		-	-
27	TSS	mg/L	Upon discharge	0	-	-	-	-		-	-
	Oil & Grease	mg/L		0	-	-	-	-		-	-
	pH	pH		0	-	-	-	-		-	-



Table 3 – Monitoring (Quarterly & 6 Monthly – No Limits apply)

EPL ID	Pollutant	Units of Measure	Monitoring Frequency	No. of Samples for the Period	Date Sampled	Date Obtained	Min Value	Mean Value	Median Value	Max or Only Value
9	Conductivity	ms/cm	6 monthly	0	-	-	-	-	-	-
	Lead	mg/L		0	-	-	-	-	-	-
	pH	pH		0	-	-	-	-	-	-
	Standing Water Level	metres		0	-	-	-	-	-	-
10	Conductivity	ms/cm	6 monthly	0	-	-	-	-	-	-
	Lead	mg/L		0	-	-	-	-	-	-
	pH	pH		0	-	-	-	-	-	-
	Standing Water Level	metres		0	-	-	-	-	-	-
11	Conductivity	ms/cm	6 monthly	0	-	-	-	-	-	-
	Lead	mg/L		0	-	-	-	-	-	-
	pH	pH		0	-	-	-	-	-	-
	Standing Water Level	metres		0	-	-	-	-	-	-
12	Conductivity	ms/cm	6 monthly	0	-	-	-	-	-	-
	Lead	mg/L		0	-	-	-	-	-	-
	pH	pH		0	-	-	-	-	-	-
	Standing Water Level	metres		0	-	-	-	-	-	-
13	Conductivity	ms/cm	Quarterly	0	-	-	-	-	-	-
	Oil & Grease	mg/L		0	-	-	-	-	-	-
	pH	pH		0	-	-	-	-	-	-
	TSS	mg/L		0	-	-	-	-	-	-



Table 4 – Monitoring (Noise – Limits Apply)

EPL ID	Date	Start Time	Measurement period	Measured Levels – dB(A) Leq 15min Day	Measured Levels – dB(A) Leq 15min Evening	Measured Levels – dB(A) Leq 15min Night	Measured Levels – dB(A) LA1 (1 min) Night	Limit	Weather	Compliant (Yes/No)	Comments
TN2, TN3, TN4											No monitoring undertaken

Note: Measured noise levels refer to noise attributable to Tarrawonga Coal Mine

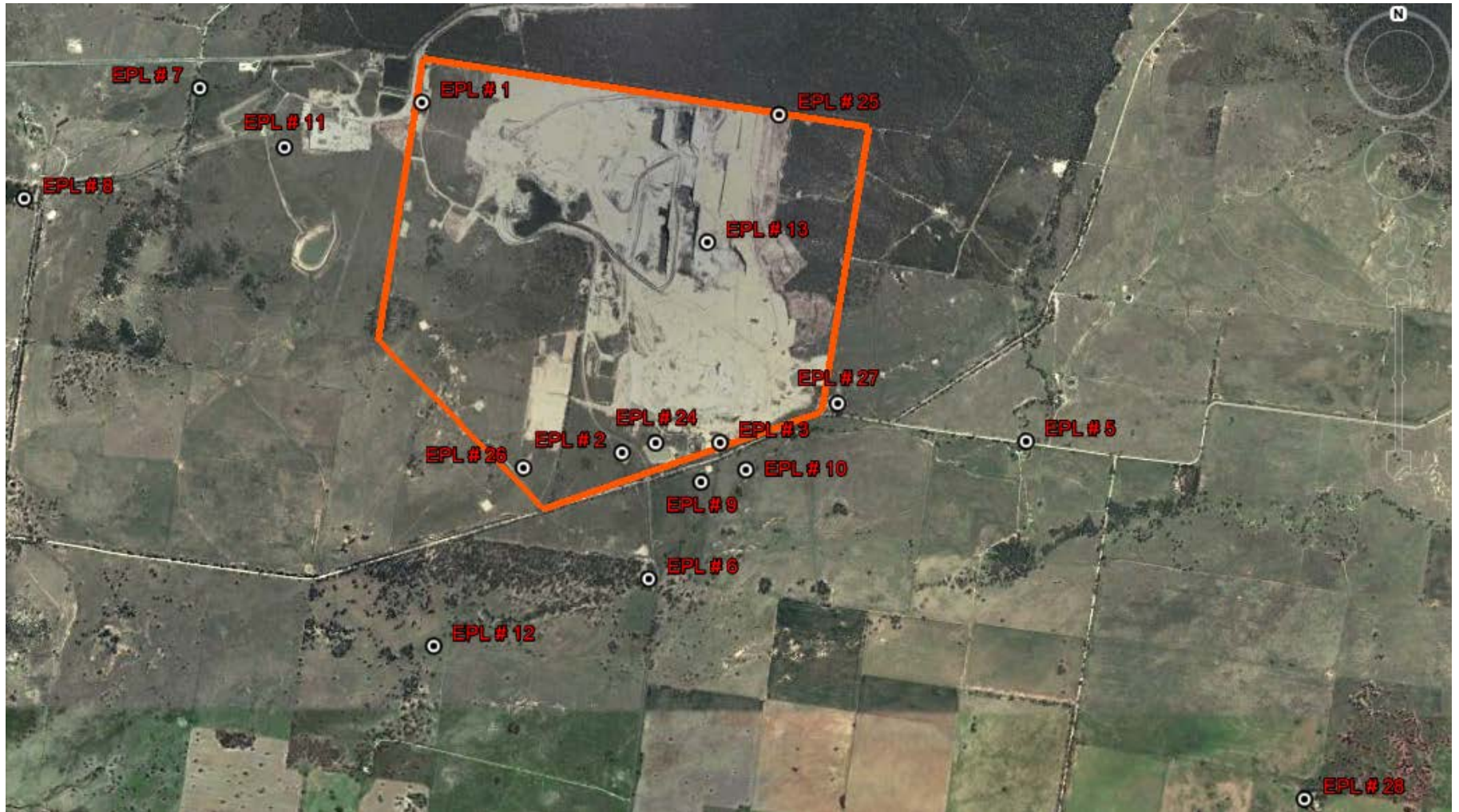


Table 5 – Monitoring (Blasts – Limits Apply)

Location	Parameter	Units of Measure	Frequency	No. of Blasts for the Month	Average Value	Max Value	100%ile Limit	(Potential) Non-compliance /breach
Tarrowonga	Blast Noise	dB (Lin Peak)	Every Blast	6	103.7	109.3	120	Nil
	Blast Vibration	mm/s	Every Blast	6	0.31	0.51	10	Nil



Figure 1 – EPL 12365 Monitoring Locations





WHITEHAVEN COAL

TARRAWONGA COAL MINE – MONTHLY MONITORING SUMMARY

Site Information

EPL No: 12365

EPA Website Link: <http://www.epa.nsw.gov.au/prpoeoapp/ViewPOEOLicence.aspx?DOCID=55113&SYSUID=1&LICID=12365>

Licensee: Tarrawonga Coal Pty Ltd

Licensee Address: Tarrawonga Coal Mine, 469 Goonbri Road, BOGGABRI NSW 2382

EPL Monitoring Points: See Figure 1 below

Sampling Period: August 2015

Publication Date: 2nd October 2015

Table 1 - No Pollutant Limits Apply

EPL ID	Pollutant	Units of Measure	Monitoring Frequency	No. of Samples for the Month	Date Sampled	Date Obtained	Min Value	Mean Value	Median Value	Max or Only Value
5	TSS	mg/L	Upon discharge	0	-	-	-	-	-	-
	Conductivity	ms/cm		0	-	-	-	-	-	-
	Oil & Grease	mg/L		0	-	-	-	-	-	-
	pH	pH		0	-	-	-	-	-	-
6	TSS	mg/L	Upon discharge	0	-	-	-	-	-	-
	Conductivity	ms/cm		0	-	-	-	-	-	-
	Oil & Grease	mg/L		0	-	-	-	-	-	-
	pH	pH		0	-	-	-	-	-	-
7	TSS	mg/L	Upon discharge	0	-	-	-	-	-	-
	Conductivity	ms/cm		0	-	-	-	-	-	-
	Oil & Grease	mg/L		0	-	-	-	-	-	-
	pH	pH		0	-	-	-	-	-	-
8	TSS	mg/L	Upon discharge	0	-	-	-	-	-	-
	Conductivity	ms/cm		0	-	-	-	-	-	-
	Oil & Grease	mg/L		0	-	-	-	-	-	-
	pH	pH		0	-	-	-	-	-	-



Table 2 - Pollutant Limits Apply

EPL ID	Pollutant	Units of Measure	Monitoring Frequency	No. of Samples for the Month	Date Sampled	Date Obtained	Min Value	Max or Only Value	100%ile Limit	Exceedance (Yes/No)	Comments
1	TSS	mg/L	Upon discharge	0	-	-	-	-		-	-
	Oil & Grease	mg/L		0	-	-	-	-		-	-
	pH	pH		0	-	-	-	-		-	-
2	TSS	mg/L	Upon discharge	0	-	-	-	-		-	-
	Oil & Grease	mg/L		0	-	-	-	-		-	-
	pH	pH		0	-	-	-	-		-	-
3	TSS	mg/L	Upon discharge	0	-	-	-	-		-	-
	Oil & Grease	mg/L		0	-	-	-	-		-	-
	pH	pH		0	-	-	-	-		-	-
24	TSS	mg/L	Upon discharge	0	-	-	-	-		-	-
	Oil & Grease	mg/L		0	-	-	-	-		-	-
	pH	pH		0	-	-	-	-		-	-
25	TSS	mg/L	Upon discharge	0	-	-	-	-		-	-
	Oil & Grease	mg/L		0	-	-	-	-		-	-
	pH	pH		0	-	-	-	-		-	-
26	TSS	mg/L	Upon discharge	0	-	-	-	-		-	-
	Oil & Grease	mg/L		0	-	-	-	-		-	-
	pH	pH		0	-	-	-	-		-	-
27	TSS	mg/L	Upon discharge	0	-	-	-	-		-	-
	Oil & Grease	mg/L		0	-	-	-	-		-	-
	pH	pH		0	-	-	-	-		-	-



Table 3 – Monitoring (Quarterly & 6 Monthly – No Limits apply)

EPL ID	Pollutant	Units of Measure	Monitoring Frequency	No. of Samples for the Period	Date Sampled	Date Obtained	Min Value	Mean Value	Median Value	Max or Only Value
9	Conductivity	ms/cm	6 monthly	1	27/8/15	3/9/15	-	-	-	3440
	Lead	mg/L		1	27/8/15	3/9/15	-	-	-	<0.001
	pH	pH		1	27/8/15	3/9/15	-	-	-	8.03
	Standing Water Level	metres		1	27/8/15	3/9/15	-	-	-	6.51
10	Conductivity	ms/cm	6 monthly	1	27/8/15	3/9/15	-	-	-	538
	Lead	mg/L		1	27/8/15	3/9/15	-	-	-	0.001
	pH	pH		1	27/8/15	3/9/15	-	-	-	7.32
	Standing Water Level	metres		1	27/8/15	3/9/15	-	-	-	3.46
11	Conductivity	ms/cm	6 monthly	1	13/8/15	29/9/15	-	-	-	2060
	Lead	mg/L		1	13/8/15	29/9/15	-	-	-	<0.001
	pH	pH		1	13/8/15	29/9/15	-	-	-	7.96
	Standing Water Level	metres		1	13/8/15	29/9/15	-	-	-	9.55
12	Conductivity	ms/cm	6 monthly	1	27/8/15	3/9/15	-	-	-	4340
	Lead	mg/L		1	27/8/15	3/9/15	-	-	-	0.002
	pH	pH		1	27/8/15	3/9/15	-	-	-	7.72
	Standing Water Level	metres		1	27/8/15	3/9/15	-	-	-	8.85
13	Conductivity	ms/cm	Quarterly	1	27/8/15	4/9/15	-	-	-	1020
	Oil & Grease	mg/L		1	27/8/15	4/9/15	-	-	-	6
	pH	pH		1	27/8/15	4/9/15	-	-	-	8.41
	TSS	mg/L		1	27/8/15	4/9/15	-	-	-	49200



Table 4 – Monitoring (Noise – Limits Apply)

EPL ID	Date	Start Time	Measurement period	Measured Levels – dB(A) L _{eq} 15min Day	Measured Levels – dB(A) L _{eq} 15min Evening	Measured Levels – dB(A) L _{eq} 15min Night	Measured Levels – dB(A) L _{A1} (1 min) Night	Limit	Weather	Compliant (Yes/No)	Comments
TN2, TN3, TN4											No monitoring undertaken

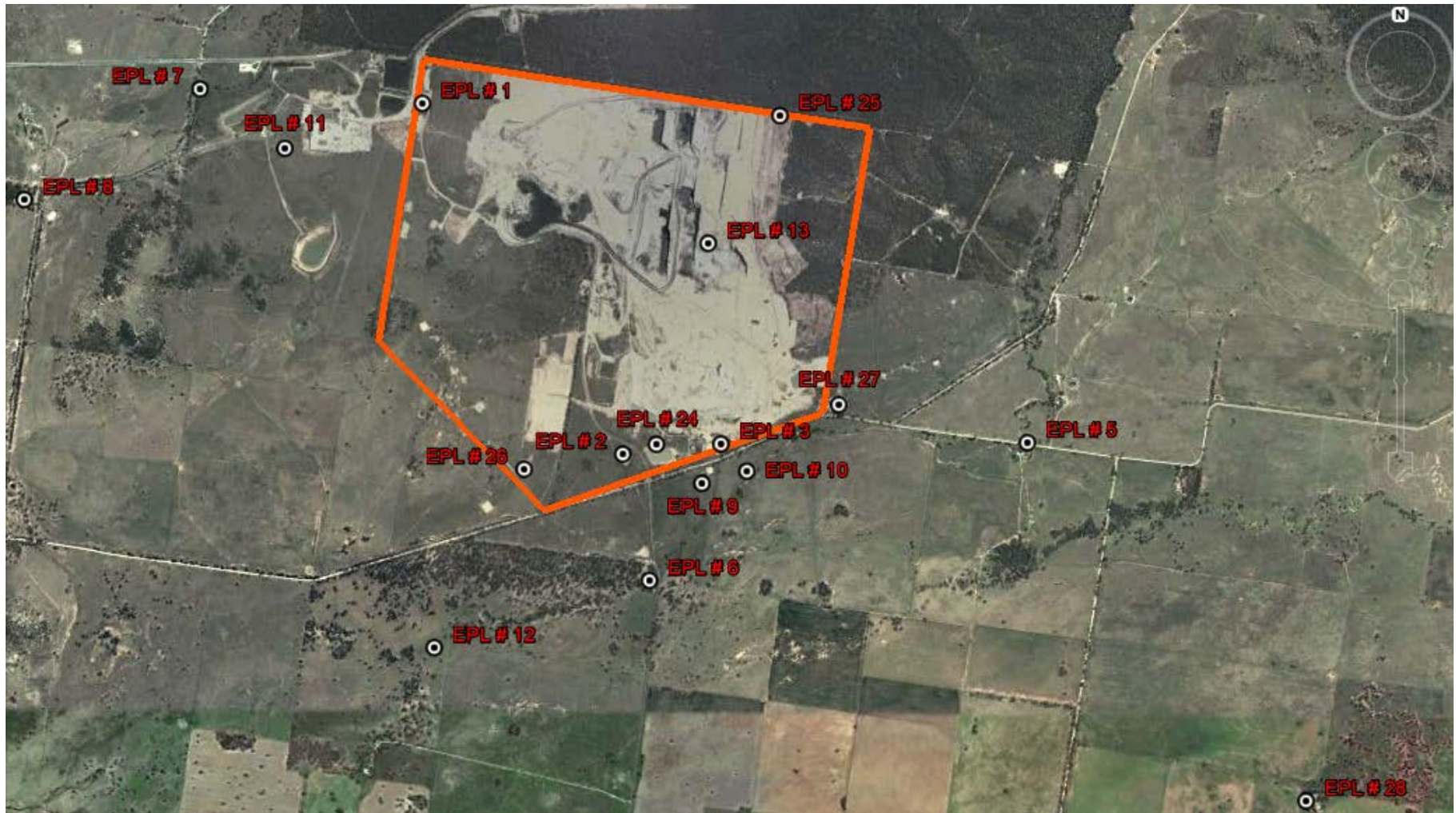
Note: Measured noise levels refer to noise attributable to Tarrawonga Coal Mine



Table 5 – Monitoring (Blasts – Limits Apply)

Location	Parameter	Units of Measure	Frequency	No. of Blasts for the Month	Average Value	Max Value	100%ile Limit	(Potential) Non-compliance /breach
Tarrawonga	Blast Noise	dB (Lin Peak)	Every Blast	8	99.3	104.9	120	Nil
	Blast Vibration	mm/s	Every Blast	8	0.32	0.48	10	Nil

Figure 1 – EPL 12365 Monitoring Locations





WHITEHAVEN COAL

TARRAWONGA COAL MINE – MONTHLY MONITORING SUMMARY

Site Information

EPL No: 12365

EPA Website Link: <http://www.epa.nsw.gov.au/prpoeoapp/ViewPOEOLicence.aspx?DOCID=55113&SYSUID=1&LICID=12365>

Licensee: Tarrawonga Coal Pty Ltd

Licensee Address: Tarrawonga Coal Mine, 469 Goonbri Road, BOGGABRI NSW 2382

EPL Monitoring Points: See Figure 1 below

Sampling Period: September 2015

Publication Date: 20th October 2015

Table 1 - No Pollutant Limits Apply

EPL ID	Pollutant	Units of Measure	Monitoring Frequency	No. of Samples for the Month	Date Sampled	Date Obtained	Min Value	Mean Value	Median Value	Max or Only Value
5	TSS	mg/L	Upon discharge	0	-	-	-	-	-	-
	Conductivity	ms/cm		0	-	-	-	-	-	-
	Oil & Grease	mg/L		0	-	-	-	-	-	-
	pH	pH		0	-	-	-	-	-	-
6	TSS	mg/L	Upon discharge	0	-	-	-	-	-	-
	Conductivity	ms/cm		0	-	-	-	-	-	-
	Oil & Grease	mg/L		0	-	-	-	-	-	-
	pH	pH		0	-	-	-	-	-	-
7	TSS	mg/L	Upon discharge	0	-	-	-	-	-	-
	Conductivity	ms/cm		0	-	-	-	-	-	-
	Oil & Grease	mg/L		0	-	-	-	-	-	-
	pH	pH		0	-	-	-	-	-	-
8	TSS	mg/L	Upon discharge	0	-	-	-	-	-	-
	Conductivity	ms/cm		0	-	-	-	-	-	-
	Oil & Grease	mg/L		0	-	-	-	-	-	-
	pH	pH		0	-	-	-	-	-	-



Table 2 - Pollutant Limits Apply

EPL ID	Pollutant	Units of Measure	Monitoring Frequency	No. of Samples for the Month	Date Sampled	Date Obtained	Min Value	Max or Only Value	100%ile Limit	Exceedance (Yes/No)	Comments
1	TSS	mg/L	Upon discharge	0	-	-	-	-		-	-
	Oil & Grease	mg/L		0	-	-	-	-		-	-
	pH	pH		0	-	-	-	-		-	-
2	TSS	mg/L	Upon discharge	0	-	-	-	-		-	-
	Oil & Grease	mg/L		0	-	-	-	-		-	-
	pH	pH		0	-	-	-	-		-	-
3	TSS	mg/L	Upon discharge	0	-	-	-	-		-	-
	Oil & Grease	mg/L		0	-	-	-	-		-	-
	pH	pH		0	-	-	-	-		-	-
24	TSS	mg/L	Upon discharge	0	-	-	-	-		-	-
	Oil & Grease	mg/L		0	-	-	-	-		-	-
	pH	pH		0	-	-	-	-		-	-
25	TSS	mg/L	Upon discharge	0	-	-	-	-		-	-
	Oil & Grease	mg/L		0	-	-	-	-		-	-
	pH	pH		0	-	-	-	-		-	-
26	TSS	mg/L	Upon discharge	0	-	-	-	-		-	-
	Oil & Grease	mg/L		0	-	-	-	-		-	-
	pH	pH		0	-	-	-	-		-	-
27	TSS	mg/L	Upon discharge	0	-	-	-	-		-	-
	Oil & Grease	mg/L		0	-	-	-	-		-	-
	pH	pH		0	-	-	-	-		-	-



Table 3 – Monitoring (Quarterly & 6 Monthly – No Limits apply)

EPL ID	Pollutant	Units of Measure	Monitoring Frequency	No. of Samples for the Period	Date Sampled	Date Obtained	Min Value	Mean Value	Median Value	Max or Only Value
9	Conductivity	ms/cm	6 monthly	0	-	-	-	-	-	-
	Lead	mg/L		0	-	-	-	-	-	-
	pH	pH		0	-	-	-	-	-	-
	Standing Water Level	metres		0	-	-	-	-	-	-
10	Conductivity	ms/cm	6 monthly	0	-	-	-	-	-	-
	Lead	mg/L		0	-	-	-	-	-	-
	pH	pH		0	-	-	-	-	-	-
	Standing Water Level	metres		0	-	-	-	-	-	-
11	Conductivity	ms/cm	6 monthly	0	-	-	-	-	-	-
	Lead	mg/L		0	-	-	-	-	-	-
	pH	pH		0	-	-	-	-	-	-
	Standing Water Level	metres		0	-	-	-	-	-	-
12	Conductivity	ms/cm	6 monthly	0	-	-	-	-	-	-
	Lead	mg/L		0	-	-	-	-	-	-
	pH	pH		0	-	-	-	-	-	-
	Standing Water Level	metres		0	-	-	-	-	-	-
13	Conductivity	ms/cm	Quarterly	0	-	-	-	-	-	-
	Oil & Grease	mg/L		0	-	-	-	-	-	-
	pH	pH		0	-	-	-	-	-	-
	TSS	mg/L		0	-	-	-	-	-	-



Table 4 – Monitoring (Noise – Limits Apply)

EPL ID	Date	Start Time	Measurement period	Measured Levels – dB(A) L _{eq} 15min Day	Measured Levels – dB(A) L _{eq} 15min Evening	Measured Levels – dB(A) L _{eq} 15min Night	Measured Levels – dB(A) L _{A1} (1 min) Night	Limit	Weather	Compliant (Yes/No)	Comments
TN2	11/9/2015	10.22am	90	<20				35	1.9/SE	Yes	
	7/9/2015	7.49pm	30		<20			35	1.0/N	Yes	
	7/9/2015	11.13pm	60			<20		35	1.6/SW	Yes	
	7/9/2015	11.13pm	60				<20	45	1.6/SW	Yes	
	8/9/2015	11.10am	90	<20				35	2.0/SW	Yes	
	8/9/2015	7.42pm	30		<20			35	0.8/W	Yes	
	9/9/2015	12.30am	60			24		35	0.8/WNW	Yes	
	9/9/2015	12.30am	60				36	45	0.8/WNW	Yes	
	9/9/2015	12.05pm	90	21				35	2.8/SW	Yes	
	9/9/2015	8.18pm	30		29			35	0.7/W	Yes	
	10/9/2015	12.21am	60			<20		35	0.8/N	Yes	
	10/9/2015	12.21am	60				30	45	0.8/N	Yes	
	10/9/2015	11.27am	90	<20				35	1.7/S	Yes	
	10/9/2015	7.40pm	30		<20			35	1.3/SSE	Yes	
	10/9/2015	10.00pm	60			<20		35	0.7/N	Yes	
10/9/2015	10.00pm	60				31	45	0.7/N	Yes		

Note: Measured noise levels refer to noise attributable to Tarrawonga Coal Mine



Table 5 – Monitoring (Noise – Limits Apply)

EPL ID	Date	Start Time	Measurement period	Measured Levels – dB(A) L _{eq} 15min Day	Measured Levels – dB(A) L _{eq} 15min Evening	Measured Levels – dB(A) L _{eq} 15min Night	Measured Levels – dB(A) L _{A1} (1 min) Night	Limit	Weather	Compliant (Yes/No)	Comments
TN3	11/9/2015	8.40am	90	32				35	1.9/SSW	Yes	
	7/9/2015	8.32pm	30		<20			35	2.5/SW	Yes	
	8/9/2015	2.44am	60			<20		35	0.6/SE	Yes	
	8/9/2015	2.44am	60				<20	45	0.6/SE	Yes	
	8/9/2015	2.26pm	90	<20				35	2.0/SW	Yes	
	8/9/2015	8.36pm	30		<20			35	0.7/WNW	Yes	
	9/9/2015	12.21am	60			<20		35	0.9/WNW	Yes	
	9/9/2015	12.21am	60				<20	45	0.9/WNW	Yes	
	9/9/2015	8.33am	90	<20				35	2.3/SSW	Yes	
	9/9/2015	8.34pm	30		<20			35	1.0/WSW	Yes	
	10/9/2015	12.22am	60			<20		35	0.8/N	Yes	
	10/9/2015	12.22am	60				<20	45	0.8/N	Yes	
	10/9/2015	10.23am	90	29				35	1.8/S	Yes	
	10/9/2015	8.21pm	30		23			35	1.9/S	Yes	
	10/9/2015	11.12pm	60			25		35	3.4/SE	Yes	
10/9/2015	11.12pm	60				30	45	3.4/SE	Yes		

Note: Measured noise levels refer to noise attributable to Tarrawonga Coal Mine



Table 6 – Monitoring (Blasts – Limits Apply)

EPL ID	Date	Start Time	Measurement period	Measured Levels – dB(A) L _{eq} 15min Day	Measured Levels – dB(A) L _{eq} 15min Evening	Measured Levels – dB(A) L _{eq} 15min Night	Measured Levels – dB(A) LA1 (1 min) Night	Limit	Weather	Compliant (Yes/No)	Comments
TN4	11/9/2015	7.01am	90	33				35	0.6/N	Yes	
	7/9/2015	9.12pm	30		<20			35	0.8/N	Yes	
	8/9/2015	1.35am	60			23		35	Calm	Yes	
	8/9/2015	1.35am	60				26	45	Calm	Yes	
	8/9/2015	4.21pm	90	<20				35	2.3/S	Yes	
	8/9/2015	6.13pm	30		<20			35	2.0/SW	Yes	
	8/9/2015	10.00pm	60			<20		35	0.6/N	Yes	
	8/9/2015	10.00pm	60				<20	45	0.6/N	Yes	
	9/9/2015	1.54pm	90	22				35	1.3/W	Yes	
	9/9/2015	9.02pm	30		<20			35	0.7/NNE	Yes	
	10/9/2015	1.35am	60			<20		35	0.6/N	Yes	
	10/9/2015	1.35am	60				<20	45	0.6/N	Yes	
	10/9/2015	3.04pm	90	<20				35	2.5/S	Yes	
	10/9/2015	9.12pm	30		<20			35	1.4/SSE	Yes	
	11/9/2015	12.21am	60				29	35	2.9/SE	Yes	
11/9/2015	12.21am	60				37	45	2.9/SE	Yes		

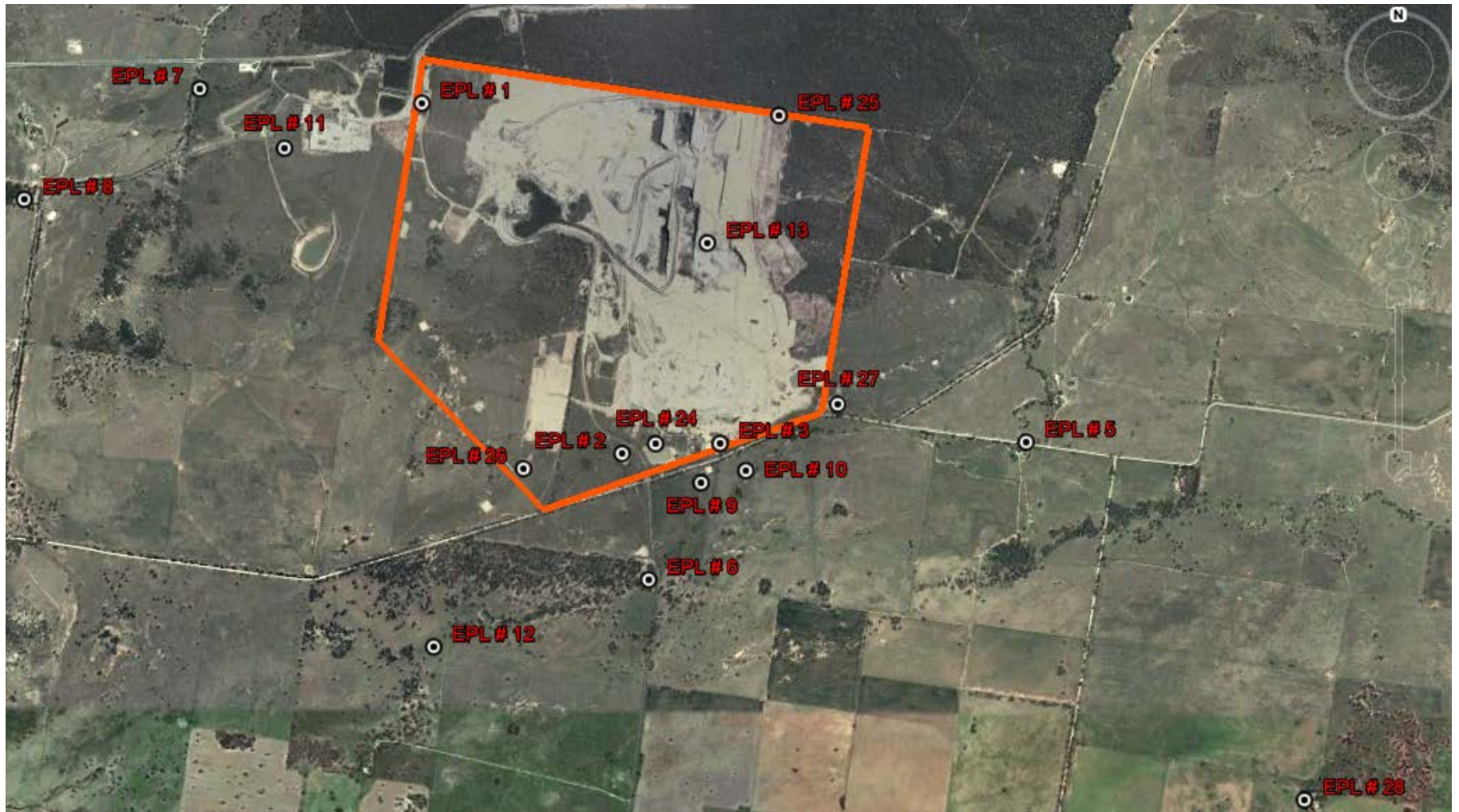
Note: Measured noise levels refer to noise attributable to Tarrawonga Coal Mine



Table 7 – Monitoring (Blasts – Limits Apply)

Location	Parameter	Units of Measure	Frequency	No. of Blasts for the Month	Average Value	Max Value	100%ile Limit	(Potential) Non-compliance /breach
Tarrawonga	Blast Noise	dB (Lin Peak)	Every Blast	6	102.6	118.3	120	Nil
	Blast Vibration	mm/s	Every Blast	6	0.45	0.52	10	Nil

Figure 1 – EPL 12365 Monitoring Locations



TARRAWONGA COAL MINE – MONTHLY MONITORING SUMMARY

Site Information

EPL No: 12365

EPA Website Link: <http://www.environment.nsw.gov.au/prpoeoapp/ViewPOEOLicence.aspx?DOCID=32390&SYSUID=1&LICID=12365>

Licensee: Tarrawonga Coal Pty Ltd

Licensee Address: Tarrawonga Coal Mine, 469 Goonbri Road, BOGGABRI NSW 2382

EPL Monitoring Points: See Figure 1 below

Sampling Period: October 2015

Publication Date: 10th November 2015

Table 1 - No Pollutant Limits Apply

EPL ID	Pollutant	Units of Measure	Monitoring Frequency	No. of Samples for the Month	Date Sampled	Date Obtained	Min Value	Mean Value	Median Value	Max or Only Value
5	TSS	mg/L	Upon discharge	0	-	-	-	-	-	-
	Conductivity	ms/cm		0	-	-	-	-	-	-
	Oil & Grease	mg/L		0	-	-	-	-	-	-
	pH	pH		0	-	-	-	-	-	-
6	TSS	mg/L	Upon discharge	0	-	-	-	-	-	-
	Conductivity	ms/cm		0	-	-	-	-	-	-
	Oil & Grease	mg/L		0	-	-	-	-	-	-
	pH	pH		0	-	-	-	-	-	-
7	TSS	mg/L	Upon discharge	0	-	-	-	-	-	-
	Conductivity	ms/cm		0	-	-	-	-	-	-
	Oil & Grease	mg/L		0	-	-	-	-	-	-
	pH	pH		0	-	-	-	-	-	-
8	TSS	mg/L	Upon discharge	0	-	-	-	-	-	-
	Conductivity	ms/cm		0	-	-	-	-	-	-
	Oil & Grease	mg/L		0	-	-	-	-	-	-
	pH	pH		0	-	-	-	-	-	-



Table 2 - Pollutant Limits Apply

EPL ID	Pollutant	Units of Measure	Monitoring Frequency	No. of Samples for the Month	Date Sampled	Date Obtained	Min Value	Max or Only Value	100%ile Limit	Exceedance (Yes/No)	Comments
1	TSS	mg/L	Upon discharge	0	-	-	-	-	-	-	-
	Oil & Grease	mg/L		0	-	-	-	-	-	-	-
	pH	pH		0	-	-	-	-	-	-	-
2	TSS	mg/L	Upon discharge	0	-	-	-	-	-	-	-
	Oil & Grease	mg/L		0	-	-	-	-	-	-	-
	pH	pH		0	-	-	-	-	-	-	-
3	TSS	mg/L	Upon discharge	0	-	-	-	-	-	-	-
	Oil & Grease	mg/L		0	-	-	-	-	-	-	-
	pH	pH		0	-	-	-	-	-	-	-
24	TSS	mg/L	Upon discharge	0	-	-	-	-	-	-	-
	Oil & Grease	mg/L		0	-	-	-	-	-	-	-
	pH	pH		0	-	-	-	-	-	-	-
25	TSS	mg/L	Upon discharge	0	-	-	-	-	-	-	-
	Oil & Grease	mg/L		0	-	-	-	-	-	-	-
	pH	pH		0	-	-	-	-	-	-	-
26	TSS	mg/L	Upon discharge	0	-	-	-	-	-	-	-
	Oil & Grease	mg/L		0	-	-	-	-	-	-	-
	pH	pH		0	-	-	-	-	-	-	-
27	TSS	mg/L	Upon discharge	0	-	-	-	-	-	-	-
	Oil & Grease	mg/L		0	-	-	-	-	-	-	-
	pH	pH		0	-	-	-	-	-	-	-

Table 3 – Monitoring (Quarterly & 6 Monthly – No Limits apply)

EPL ID	Pollutant	Units of Measure	Monitoring Frequency	No. of Samples for the Period	Date Sampled	Date Obtained	Min Value	Mean Value	Median Value	Max or Only Value
9	Conductivity	ms/cm	6 monthly	0	-	-	-	-	-	-
	Lead	mg/L		0	-	-	-	-	-	-
	pH	pH		0	-	-	-	-	-	-
	Standing Water Level	metres		0	-	-	-	-	-	-
10	Conductivity	ms/cm	6 monthly	0	-	-	-	-	-	-
	Lead	mg/L		0	-	-	-	-	-	-
	pH	pH		0	-	-	-	-	-	-
	Standing Water Level	metres		0	-	-	-	-	-	-
11	Conductivity	ms/cm	6 monthly	0	-	-	-	-	-	-
	Lead	mg/L		0	-	-	-	-	-	-
	pH	pH		0	-	-	-	-	-	-
	Standing Water Level	metres		0	-	-	-	-	-	-
12	Conductivity	ms/cm	6 monthly	0	-	-	-	-	-	-
	Lead	mg/L		0	-	-	-	-	-	-
	pH	pH		0	-	-	-	-	-	-
	Standing Water Level	metres		0	-	-	-	-	-	-
13	Conductivity	ms/cm	Quarterly	1	-	-	-	-	-	-
	Oil & Grease	mg/L		1	-	-	-	-	-	-
	pH	pH		1	-	-	-	-	-	-
	TSS	mg/L		1	-	-	-	-	-	-

Table 4 – Monitoring (Noise – Limits Apply)

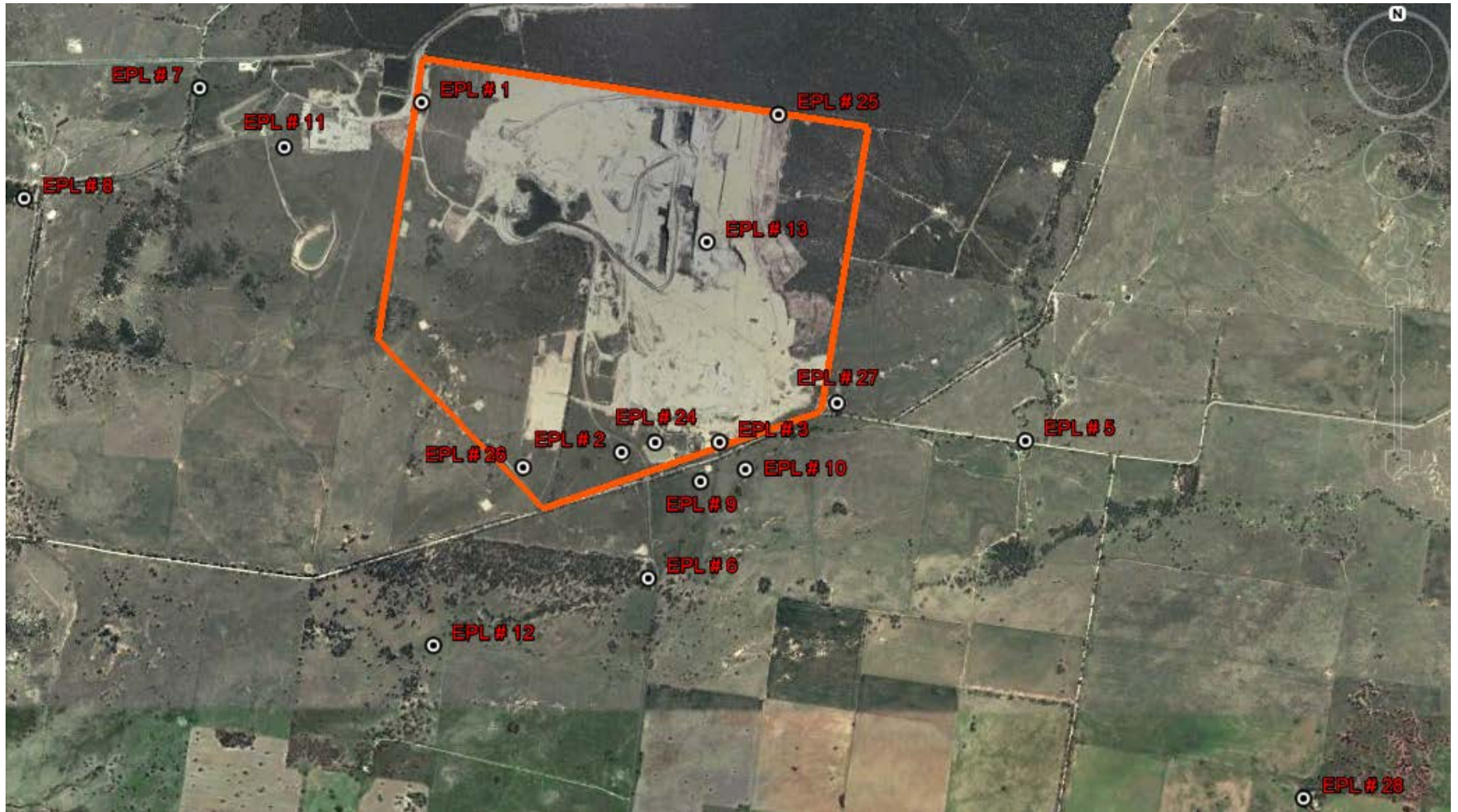
EPL ID	Date	Start Time	Measurement period	Measured Levels – dB(A) L _{eq} 15min Day	Measured Levels – dB(A) L _{eq} 15min Evening	Measured Levels – dB(A) L _{eq} 15min Night	Measured Levels – dB(A) L _{A1} (1 min) Night	Limit	Weather	Compliant (Yes/No)	Comments
N1	-	-	90min	-				35	-	-	-
	-	-	30min		-			35	-	-	
	-	-	60min			-		35	-	-	
	-	-	60min				-	45	-	-	
	-	-	90min	-				35	-	-	
	-	-	30min		-			35	-	-	
	-	-	60min			-		35	-	-	
	-	-	60min				-	45	-	-	
	-	-	90min	-				35	-	-	
	-	-	30min		-			35	-	-	
	-	-	60min			-		35	-	-	
	-	-	60min				-	45	-	-	
	-	-	90min	-				35	-	-	
	-	-	30min		-			35	-	-	
	-	-	60min			-		35	-	-	
-	-	60min				-	45	-	-		

Note: Measured noise levels refer to noise attributable to Tarrawonga Coal Mine

Table 5 – Monitoring (Blasts – Limits Apply)

Location	Parameter	Units of Measure	Frequency	No. of Blasts for the Month	Average Value	Max Value	100%ile Limit	(Potential) Non-compliance /breach
Tarrawonga	Blast Noise	dB (Lin Peak)	Every Blast	4	101.6	105.9	120	Nil
	Blast Vibration	mm/s	Every Blast	4	0.34	0.78	10	Nil

Figure 1 – EPL 12365 Monitoring Locations





WHITEHAVEN COAL

TARRAWONGA COAL MINE – MONTHLY MONITORING SUMMARY

Site Information

EPL No: 12365

EPA Website Link: <http://www.epa.nsw.gov.au/prpoeoapp/ViewPOEOLicence.aspx?DOCID=55113&SYSUID=1&LICID=12365>

Licensee: Tarrawonga Coal Pty Ltd

Licensee Address: Tarrawonga Coal Mine, 469 Goonbri Road, BOGGABRI NSW 2382

EPL Monitoring Points: See Figure 1 below

Sampling Period: November 2015

Publication Date: 15 December 2015

Table 1 - No Pollutant Limits Apply

EPL ID	Pollutant	Units of Measure	Monitoring Frequency	No. of Samples for the Month	Date Sampled	Date Obtained	Min Value	Mean Value	Median Value	Max or Only Value
5	TSS	mg/L	Upon discharge	0	-	-	-	-	-	-
	Conductivity	ms/cm		0	-	-	-	-	-	-
	Oil & Grease	mg/L		0	-	-	-	-	-	-
	pH	pH		0	-	-	-	-	-	-
6	TSS	mg/L	Upon discharge	0	-	-	-	-	-	-
	Conductivity	ms/cm		0	-	-	-	-	-	-
	Oil & Grease	mg/L		0	-	-	-	-	-	-
	pH	pH		0	-	-	-	-	-	-
7	TSS	mg/L	Upon discharge	0	-	-	-	-	-	-
	Conductivity	ms/cm		0	-	-	-	-	-	-
	Oil & Grease	mg/L		0	-	-	-	-	-	-
	pH	pH		0	-	-	-	-	-	-
8	TSS	mg/L	Upon discharge	1	-	-	-	-	-	-
	Conductivity	ms/cm		1	-	-	-	-	-	-
	Oil & Grease	mg/L		1	-	-	-	-	-	-
	pH	pH		1	-	-	-	-	-	-



Table 2 - Pollutant Limits Apply

EPL ID	Pollutant	Units of Measure	Monitoring Frequency	No. of Samples for the Month	Date Sampled	Date Obtained	Min Value	Max or Only Value	100%ile Limit	Exceedance (Yes/No)	Comments
1	TSS	mg/L	Upon discharge	0	-	-	-	-		-	-
	Oil & Grease	mg/L		0	-	-	-	-		-	-
	pH	pH		0	-	-	-	-		-	-
2	TSS	mg/L	Upon discharge	0	-	-	-	-		-	-
	Oil & Grease	mg/L		0	-	-	-	-		-	-
	pH	pH		0	-	-	-	-		-	-
3	TSS	mg/L	Upon discharge	0	-	-	-	-		-	-
	Oil & Grease	mg/L		0	-	-	-	-		-	-
	pH	pH		0	-	-	-	-		-	-
24	TSS	mg/L	Upon discharge	0	-	-	-	-		-	-
	Oil & Grease	mg/L		0	-	-	-	-		-	-
	pH	pH		0	-	-	-	-		-	-
25	TSS	mg/L	Upon discharge	0	-	-	-	-		-	-
	Oil & Grease	mg/L		0	-	-	-	-		-	-
	pH	pH		0	-	-	-	-		-	-
26	TSS	mg/L	Upon discharge	0	-	-	-	-		-	-
	Oil & Grease	mg/L		0	-	-	-	-		-	-
	pH	pH		0	-	-	-	-		-	-
27	TSS	mg/L	Upon discharge	0	-	-	-	-		-	-
	Oil & Grease	mg/L		0	-	-	-	-		-	-
	pH	pH		0	-	-	-	-		-	-



Table 3 – Monitoring (Quarterly & 6 Monthly – No Limits apply)

EPL ID	Pollutant	Units of Measure	Monitoring Frequency	No. of Samples for the Period	Date Sampled	Date Obtained	Min Value	Mean Value	Median Value	Max or Only Value
9	Conductivity	ms/cm	6 monthly	0	-	-	-	-	-	-
	Lead	mg/L		0	-	-	-	-	-	-
	pH	pH		0	-	-	-	-	-	-
	Standing Water Level	metres		0	-	-	-	-	-	-
10	Conductivity	ms/cm	6 monthly	0	-	-	-	-	-	-
	Lead	mg/L		0	-	-	-	-	-	-
	pH	pH		0	-	-	-	-	-	-
	Standing Water Level	metres		0	-	-	-	-	-	-
11	Conductivity	ms/cm	6 monthly	0	-	-	-	-	-	-
	Lead	mg/L		0	-	-	-	-	-	-
	pH	pH		0	-	-	-	-	-	-
	Standing Water Level	metres		0	-	-	-	-	-	-
12	Conductivity	ms/cm	6 monthly	0	-	-	-	-	-	-
	Lead	mg/L		0	-	-	-	-	-	-
	pH	pH		0	-	-	-	-	-	-
	Standing Water Level	metres		0	-	-	-	-	-	-
13	Conductivity	ms/cm	Quarterly	1	17/11/2015	25/11/2015	-	-	-	1350
	Oil & Grease	mg/L		1	17/11/2015	25/11/2015	-	-	-	<5
	pH	pH		1	17/11/2015	25/11/2015	-	-	-	8.36
	TSS	mg/L		1	17/11/2015	25/11/2015	-	-	-	43



Table 4 – Monitoring (Noise – Limits Apply)

EPL ID	Date	Start Time	Measurement period	Measured Levels – dB(A) L _{eq} 15min Day	Measured Levels – dB(A) L _{eq} 15min Evening	Measured Levels – dB(A) L _{eq} 15min Night	Measured Levels – dB(A) L _{A1} (1 min) Night	Limit	Weather	Compliant (Yes/No)	Comments
TN2, TN3, TN4			90								No monitoring undertaken
			30								
			60								
			60								
			90								
			30								
			60								
			60								
			90								
			30								
			60								
			60								
			90								
			30								
			60								
		60									

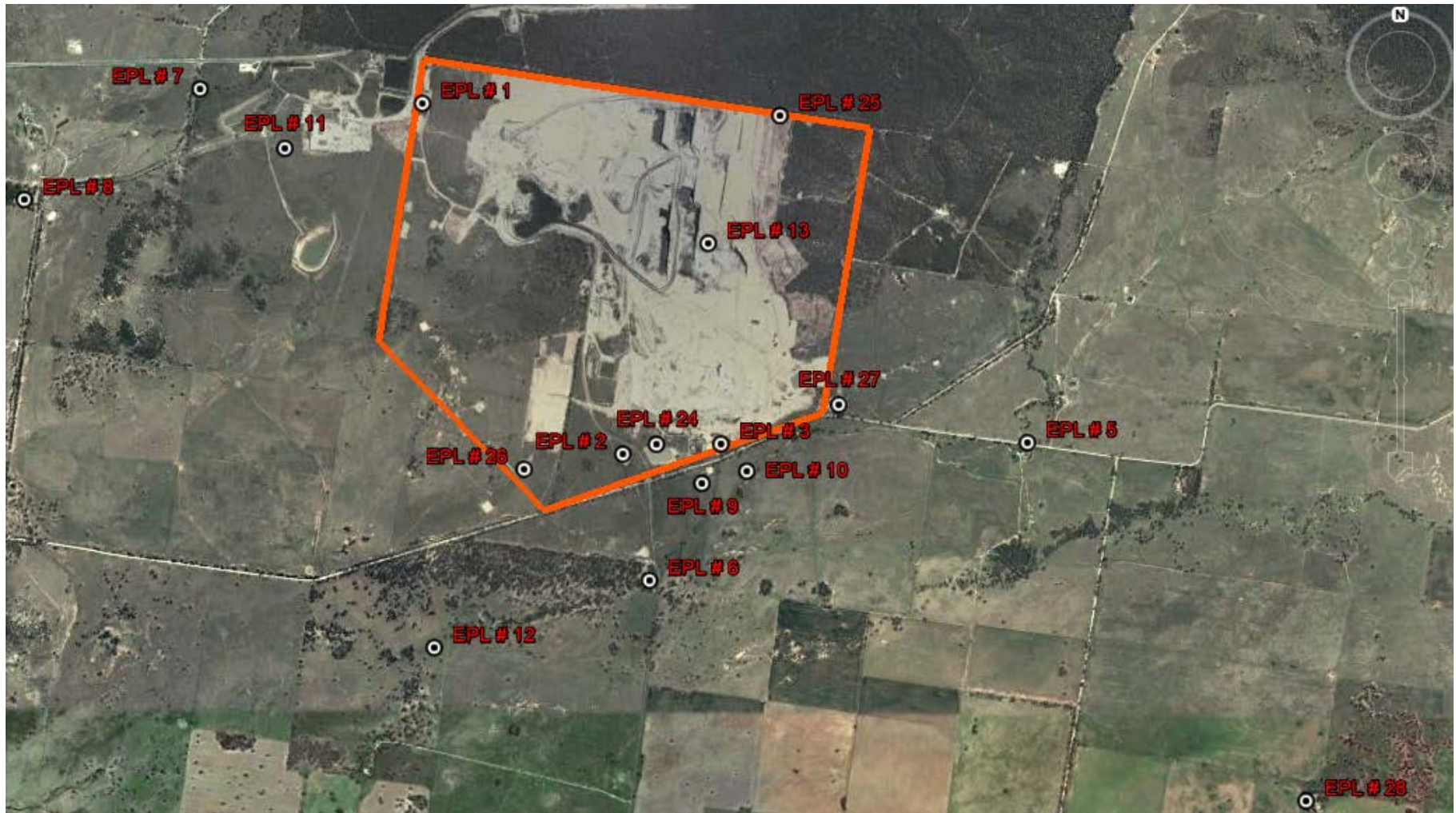
Note: Measured noise levels refer to noise attributable to Tarrawonga Coal Mine



Table 7 – Monitoring (Blasts – Limits Apply)

Location	Parameter	Units of Measure	Frequency	No. of Blasts for the Month	Average Value	Max Value	100%ile Limit	(Potential) Non-compliance /breach
Tarrawonga	Blast Noise	dB (Lin Peak)	Every Blast	9	102.0	110.6	120	Nil
	Blast Vibration	mm/s	Every Blast	9	0.28	0.48	10	Nil

Figure 1 – EPL 12365 Monitoring Locations





WHITEHAVEN COAL

TARRAWONGA COAL MINE – MONTHLY MONITORING SUMMARY

Site Information

EPL No: 12365

EPA Website Link: <http://www.epa.nsw.gov.au/prpoeoapp/ViewPOEOLicence.aspx?DOCID=55113&SYSUID=1&LICID=12365>

Licensee: Tarrawonga Coal Pty Ltd

Licensee Address: Tarrawonga Coal Mine, 469 Goonbri Road, BOGGABRI NSW 2382

EPL Monitoring Points: See Figure 1 below

Sampling Period: December 2015

Publication Date: 5th February 2016

Table 1 - No Pollutant Limits Apply

EPL ID	Pollutant	Units of Measure	Monitoring Frequency	No. of Samples for the Month	Date Sampled	Date Obtained	Min Value	Mean Value	Median Value	Max or Only Value
5	TSS	mg/L	Upon discharge	0	-	-	-	-	-	-
	Conductivity	ms/cm		0	-	-	-	-	-	-
	Oil & Grease	mg/L		0	-	-	-	-	-	-
	pH	pH		0	-	-	-	-	-	-
6	TSS	mg/L	Upon discharge	0	-	-	-	-	-	-
	Conductivity	ms/cm		0	-	-	-	-	-	-
	Oil & Grease	mg/L		0	-	-	-	-	-	-
	pH	pH		0	-	-	-	-	-	-
7	TSS	mg/L	Upon discharge	0	-	-	-	-	-	-
	Conductivity	ms/cm		0	-	-	-	-	-	-
	Oil & Grease	mg/L		0	-	-	-	-	-	-
	pH	pH		0	-	-	-	-	-	-
8	TSS	mg/L	Upon discharge	0	-	-	-	-	-	-
	Conductivity	ms/cm		0	-	-	-	-	-	-
	Oil & Grease	mg/L		0	-	-	-	-	-	-
	pH	pH		0	-	-	-	-	-	-



Table 2 - Pollutant Limits Apply

EPL ID	Pollutant	Units of Measure	Monitoring Frequency	No. of Samples for the Month	Date Sampled	Date Obtained	Min Value	Max or Only Value	100%ile Limit	Exceedance (Yes/No)	Comments
1	TSS	mg/L	Upon discharge	0	-	-	-	-		-	-
	Oil & Grease	mg/L		0	-	-	-	-		-	-
	pH	pH		0	-	-	-	-		-	-
2	TSS	mg/L	Upon discharge	0	-	-	-	-		-	-
	Oil & Grease	mg/L		0	-	-	-	-		-	-
	pH	pH		0	-	-	-	-		-	-
3	TSS	mg/L	Upon discharge	0	-	-	-	-		-	-
	Oil & Grease	mg/L		0	-	-	-	-		-	-
	pH	pH		0	-	-	-	-		-	-
24	TSS	mg/L	Upon discharge	0	-	-	-	-		-	-
	Oil & Grease	mg/L		0	-	-	-	-		-	-
	pH	pH		0	-	-	-	-		-	-
25	TSS	mg/L	Upon discharge	0	-	-	-	-		-	-
	Oil & Grease	mg/L		0	-	-	-	-		-	-
	pH	pH		0	-	-	-	-		-	-
26	TSS	mg/L	Upon discharge	0	-	-	-	-		-	-
	Oil & Grease	mg/L		0	-	-	-	-		-	-
	pH	pH		0	-	-	-	-		-	-
27	TSS	mg/L	Upon discharge	0	-	-	-	-		-	-
	Oil & Grease	mg/L		0	-	-	-	-		-	-
	pH	pH		0	-	-	-	-		-	-



Table 3 – Monitoring (Quarterly & 6 Monthly – No Limits apply)

EPL ID	Pollutant	Units of Measure	Monitoring Frequency	No. of Samples for the Period	Date Sampled	Date Obtained	Min Value	Mean Value	Median Value	Max or Only Value
9	Conductivity	ms/cm	6 monthly	0	-	-	-	-	-	-
	Lead	mg/L		0	-	-	-	-	-	-
	pH	pH		0	-	-	-	-	-	-
	Standing Water Level	metres		0	-	-	-	-	-	-
10	Conductivity	ms/cm	6 monthly	0	-	-	-	-	-	-
	Lead	mg/L		0	-	-	-	-	-	-
	pH	pH		0	-	-	-	-	-	-
	Standing Water Level	metres		0	-	-	-	-	-	-
11	Conductivity	ms/cm	6 monthly	0	-	-	-	-	-	-
	Lead	mg/L		0	-	-	-	-	-	-
	pH	pH		0	-	-	-	-	-	-
	Standing Water Level	metres		0	-	-	-	-	-	-
12	Conductivity	ms/cm	6 monthly	0	-	-	-	-	-	-
	Lead	mg/L		0	-	-	-	-	-	-
	pH	pH		0	-	-	-	-	-	-
	Standing Water Level	metres		0	-	-	-	-	-	-
13	Conductivity	ms/cm	Quarterly	0	-	-	-	-	-	-
	Oil & Grease	mg/L		0	-	-	-	-	-	-
	pH	pH		0	-	-	-	-	-	-
	TSS	mg/L		0	-	-	-	-	-	-



Table 4 – Monitoring (Noise – Limits Apply)

EPL ID	Date	Start Time	Measurement period	Measured Levels – dB(A) L _{eq} 15min Day	Measured Levels – dB(A) L _{eq} 15min Evening	Measured Levels – dB(A) L _{eq} 15min Night	Measured Levels – dB(A) L _{A1} (1 min) Night	Limit	Weather	Compliant (Yes/No)	Comments
TN2	7/12/15	11.57am	90	<20				35	1.7/WSW	Yes	
	7/12/15	7.28pm	30		<20			35	1.0/SW	Yes	
	7/12/15	10.02pm	60			<20		35	1.0/NNE	Yes	
	7/12/15	10.02pm	60				25	45	1.0/NNE	Yes	
	8/12/15	2.13pm	90	<20				35	4.4/NNW	Yes	
	8/12/15	7.50am	30		<20			35	0.7/NNE	Yes	
	8/12/15	10.03pm	60			<20		35	2.2/N	Yes	
	8/12/15	10.03pm	60				<20	45	2.2/N	Yes	
	9/12/15	10.35am	90	<20				35	2.9/NW	Yes	
	9/12/15	7.53pm	30		<20			35	2.3/NE	Yes	
	9/12/15	10.04pm	60			25		35	2.7/SE	Yes	
	9/12/15	10.04pm	60				30	45	2.7/SE	Yes	
	10/12/15	2.15pm	90	<20				35	2.1/SE	Yes	
	10/12/15	8.10pm	30		<20			35	1.7/NNE	Yes	
	10/12/15	10.00pm	60			<20		35	3.1/N	Yes	
10/12/15	10.00pm	60				<20	45	3.1/N	Yes		

Note: Measured noise levels refer to noise attributable to Tarrawonga Coal Mine



Table 5 – Monitoring (Noise – Limits Apply)

EPL ID	Date	Start Time	Measurement period	Measured Levels – dB(A) L _{eq} 15min Day	Measured Levels – dB(A) L _{eq} 15min Evening	Measured Levels – dB(A) L _{eq} 15min Night	Measured Levels – dB(A) L _{A1} (1 min) Night	Limit	Weather	Compliant (Yes/No)	Comments
TN3	7/12/15	1.43pm	90	<20				35	2.2/SW	Yes	
	7/12/15	9.12pm	30		<20			35	1.2/NW	Yes	
	8/12/15	12.31am	60			21		35	1.3/N	Yes	
	8/12/15	12.31am	60				27	45	1.3/N	Yes	
	8/12/15	2.39pm	90	<20				35	4.2//NW	Yes	
	8/12/15	8.35pm	30		<20			35	1.4/N	Yes	
	8/12/15	11.17pm	60			<20		35	3.0/W	Yes	
	8/12/15	11.17pm	60				<20	45	3.0/W	Yes	
	9/12/15	7.05am	90	25				35	2.7/NW	Yes	
	9/12/15	8.37pm	30		25			35	2.3/NE	Yes	
	9/12/15	11.19pm	60			<20		35	1.9/ENE	Yes	
	9/12/15	11.19pm	60				24	45	1.9/ENE	Yes	
	10/12/15	3.58pm	90	<20				35	1.5/NE	Yes	
	10/12/15	8.10pm	30		21			35	1.4/ENE	Yes	
	10/12/15	10.00pm	60			<20		35	3.1/N	Yes	
10/12/15	10.00pm	60				<20	45	3.1/N	Yes		

Note: Measured noise levels refer to noise attributable to Tarrawonga Coal Mine



Table 6 – Monitoring (Blasts – Limits Apply)

EPL ID	Date	Start Time	Measurement period	Measured Levels – dB(A) L _{eq} 15min Day	Measured Levels – dB(A) L _{eq} 15min Evening	Measured Levels – dB(A) L _{eq} 15min Night	Measured Levels – dB(A) L _{A1} (1 min) Night	Limit	Weather	Compliant (Yes/No)	Comments
TN4	7/12/15	11.57am	90	<20				35	1.3/W	Yes	
	7/12/15	9.12pm	30		<20			35	2.4/WNW	Yes	
	7/12/15	11.18pm	60			<20		35	1.2/NE	Yes	
	7/12/15	11.18pm	60				25	45	1.2/NE	Yes	
	8/12/15	12.56pm	90	<20				35	3.3/WNW	Yes	
	8/12/15	9.16pm	30		<20			35	1.8/N	Yes	
	9/12/15	12.29am	60			27		35	2.2/WSW	Yes	
	9/12/15	12.29am	60				33	45	2.2/WSW	Yes	
	9/9/12	8.48am	90	24				35	1.6/NNE	Yes	
	9/9/15	9.18pm	30		21			35	2.4/NE	Yes	
	10/12/15	12.33pm	60			22		35	1.4/WSW	Yes	
	10/12/15	12.33pm	60				26	45	1.4/WSW	Yes	
	10/12/15	9.07am	90	<20				35	4.6/SE	Yes	
	10/12/15	8.53pm	30		<20			35	1.2/NNE	Yes	
	10/12/15	11.14pm	60			<20		35	2.7/N	Yes	
10/12/15	11.14pm	60				<20	45	2.7/N	Yes		

Note: Measured noise levels refer to noise attributable to Tarrawonga Coal Mine



Table 7 – Monitoring (Blasts – Limits Apply)

Location	Parameter	Units of Measure	Frequency	No. of Blasts for the Month	Average Value	Max Value	100%ile Limit	(Potential) Non-compliance /breach
Tarrawonga	Blast Noise	dB (Lin Peak)	Every Blast	7	87.0	109.2	120	Nil
	Blast Vibration	mm/s	Every Blast	7	0.24	0.43	10	Nil

Figure 1 – EPL 12365 Monitoring Locations

