

TARRAWONGA COAL MINE – MONTHLY MONITORING SUMMARY

Site Information

EPL No: 12365

EPA Website Link: <http://epa.nsw.gov.au/prpoeoapp/ViewPOEOLicence.aspx?DOCID=33513&SYSUID=1&LICID=12365>

Licensee: Tarrawonga Coal Pty Ltd

Licensee Address: Tarrawonga Coal Mine, 469 Goonbri Road, BOGGABRI NSW 2382

EPL Monitoring Points: See Figure 1 below

Sampling Period: January 2014

Publication Date: 7th February 2014

Table 1 - No Pollutant Limits Apply

EPL ID	Pollutant	Units of Measure	Monitoring Frequency	No. of Samples for the Month	Date Sampled	Date Obtained	Min Value	Mean Value	Median Value	Max or Only Value
5	TSS	mg/L	Upon discharge	0	-	-	-	-	-	-
	Conductivity	ms/cm		0	-	-	-	-	-	-
	Oil & Grease	mg/L		0	-	-	-	-	-	-
	pH	pH		0	-	-	-	-	-	-
6	TSS	mg/L	Upon discharge	0	-	-	-	-	-	-
	Conductivity	ms/cm		0	-	-	-	-	-	-
	Oil & Grease	mg/L		0	-	-	-	-	-	-
	pH	pH		0	-	-	-	-	-	-
7	TSS	mg/L	Upon discharge	0	-	-	-	-	-	-
	Conductivity	ms/cm		0	-	-	-	-	-	-
	Oil & Grease	mg/L		0	-	-	-	-	-	-
	pH	pH		0	-	-	-	-	-	-
8	TSS	mg/L	Upon discharge	0	-	-	-	-	-	-
	Conductivity	ms/cm		0	-	-	-	-	-	-
	Oil & Grease	mg/L		0	-	-	-	-	-	-
	pH	pH		0	-	-	-	-	-	-



Table 2 - Pollutant Limits Apply

EPL ID	Pollutant	Units of Measure	Monitoring Frequency	No. of Samples for the Month	Date Sampled	Date Obtained	Min Value	Max or Only Value	100%ile Limit	Exceedance (Yes/No)	Comments
1	TSS	mg/L	Upon discharge	0	-	-	-	-	50	-	-
	Oil & Grease	mg/L		0	-	-	-	-	10	-	-
	pH	pH		0	-	-	-	-	6.5-8.5	-	-
2	TSS	mg/L	Upon discharge	0	-	-	-	-	50	-	-
	Oil & Grease	mg/L		0	-	-	-	-	10	-	-
	pH	pH		0	-	-	-	-	6.5-8.5	-	-
3	TSS	mg/L	Upon discharge	0	-	-	-	-	50	-	-
	Oil & Grease	mg/L		0	-	-	-	-	10	-	-
	pH	pH		0	-	-	-	-	6.5-8.5	-	-
4 (No longer exists)	TSS	mg/L	Upon discharge	-	-	-	-	-	50	-	-
	Oil & Grease	mg/L		-	-	-	-	-	10	-	-
	pH	pH		-	-	-	-	-	6.5-8.5	-	-
24	TSS	mg/L	Upon discharge	0	-	-	-	-	50	-	-
	Oil & Grease	mg/L		0	-	-	-	-	10	-	-
	pH	pH		0	-	-	-	-	6.5-8.5	-	-
25	TSS	mg/L	Upon discharge	0	-	-	-	-	50	-	-
	Oil & Grease	mg/L		0	-	-	-	-	10	-	-
	pH	pH		0	-	-	-	-	6.5-8.5	-	-
26	TSS	mg/L	Upon discharge	0	-	-	-	-	50	-	-
	Oil & Grease	mg/L		0	-	-	-	-	10	-	-
	pH	pH		0	-	-	-	-	6.5-8.5	-	-
27	TSS	mg/L	Upon discharge	0	-	-	-	-	50	-	-
	Oil & Grease	mg/L		0	-	-	-	-	10	-	-
	pH	pH		0	-	-	-	-	6.5-8.5	-	-

Table 3 – Monitoring (Quarterly & 6 Monthly – No Limits apply)

EPL ID	Pollutant	Units of Measure	Monitoring Frequency	No. of Samples for the Period	Date Sampled	Date Obtained	Min Value	Mean Value	Median Value	Max or Only Value
9	Conductivity	ms/cm	6 monthly	0	-	-	-	-	-	-
	Lead	mg/L		0	-	-	-	-	-	-
	pH	pH		0	-	-	-	-	-	-
	Standing Water Level	metres		0	-	-	-	-	-	-
10	Conductivity	ms/cm	6 monthly	0	-	-	-	-	-	-
	Lead	mg/L		0	-	-	-	-	-	-
	pH	pH		0	-	-	-	-	-	-
	Standing Water Level	metres		0	-	-	-	-	-	-
11	Conductivity	ms/cm	6 monthly	0	-	-	-	-	-	-
	Lead	mg/L		0	-	-	-	-	-	-
	pH	pH		0	-	-	-	-	-	-
	Standing Water Level	metres		0	-	-	-	-	-	-
12	Conductivity	ms/cm	6 monthly	0	-	-	-	-	-	-
	Lead	mg/L		0	-	-	-	-	-	-
	pH	pH		0	-	-	-	-	-	-
	Standing Water Level	metres		0	-	-	-	-	-	-
13	Conductivity	ms/cm	Quarterly	0	-	-	-	-	-	-
	Oil & Grease	mg/L		0	-	-	-	-	-	-
	pH	pH		0	-	-	-	-	-	-
	TSS	mg/L		0	-	-	-	-	-	-

Table 4 – Monitoring (Noise – Limits Apply)

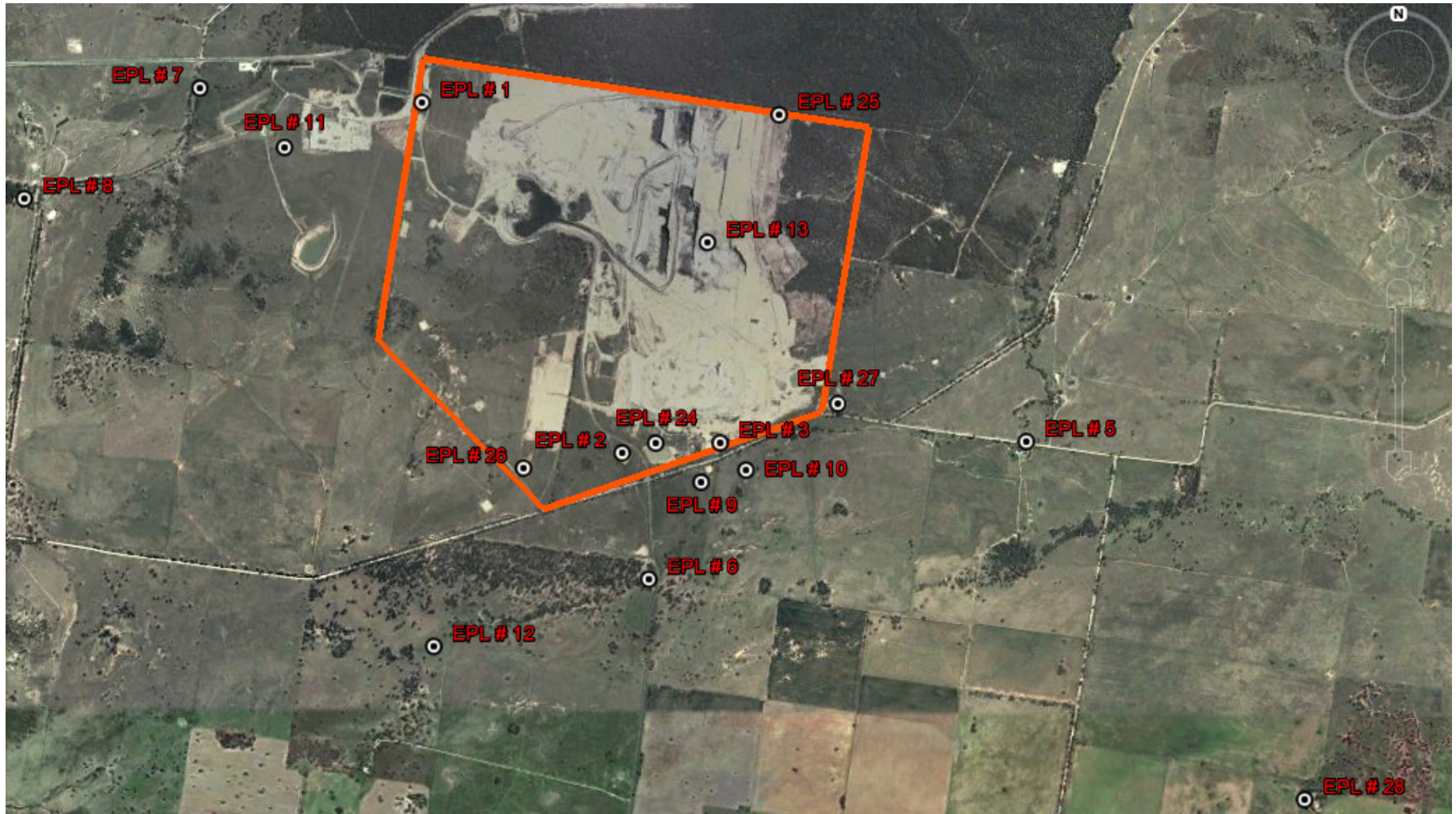
EPL ID	Date	Start Time	Measurement period	Measured Levels – dB(A) L _{eq} 15min Day	Measured Levels – dB(A) L _{eq} 15min Evening	Measured Levels – dB(A) L _{eq} 15min Night	Measured Levels – dB(A) L _{A1} (1 min) Night	Limit	Weather	Compliant (Yes/No)	Comments
N1			90 minutes					35			No monitoring this month
			30 minutes					35			
			60 minutes					35			
			60 minutes					45			
			90 minutes					35			
			30 minutes					35			
			60 minutes					35			
			60 minutes					45			
			90 minutes					35			
			30 minutes					35			
			60 minutes					35			

Note: Measured noise levels refer to noise attributable to Tarrawonga Coal Mine

Table 5 – Monitoring (Blasts – Limits Apply)

Location	Parameter	Units of Measure	Frequency	No. of Blasts for the Month	Average Value	Max Value	100%ile Limit	(Potential) Non-compliance /breach
Tarrawonga	Blast Noise	dB (Lin Peak)	Every Blast	3	87.1	89.0	120	No
	Blast Vibration	mm/s	Every Blast	3	0.21	0.42	10	No
Templemore	Blast Noise	dB (Lin Peak)	Every Blast	3	95.3	96.6	120	No
	Blast Vibration	mm/s	Every Blast	3	0.70	1.37	10	No

Figure 1 – EPL 12365 Monitoring Locations



TARRAWONGA COAL MINE – MONTHLY MONITORING SUMMARY

Site Information

EPL No: 12365

EPA Website Link: <http://www.environment.nsw.gov.au/prpoeoapp/ViewPOEOLicence.aspx?DOCID=32390&SYSUID=1&LICID=12365>

Licensee: Tarrawonga Coal Pty Ltd

Licensee Address: Tarrawonga Coal Mine, 469 Goonbri Road, BOGGABRI NSW 2382

EPL Monitoring Points: See Figure 1 below

Sampling Period: February 2014

Publication Date: 5th March 2014

Table 1 - No Pollutant Limits Apply

EPL ID	Pollutant	Units of Measure	Monitoring Frequency	No. of Samples for the Month	Date Sampled	Date Obtained	Min Value	Mean Value	Median Value	Max or Only Value
5	TSS	mg/L	Upon discharge	0	-	-	-	-	-	-
	Conductivity	ms/cm		0	-	-	-	-	-	-
	Oil & Grease	mg/L		0	-	-	-	-	-	-
	pH	pH		0	-	-	-	-	-	-
6	TSS	mg/L	Upon discharge	0	-	-	-	-	-	-
	Conductivity	ms/cm		0	-	-	-	-	-	-
	Oil & Grease	mg/L		0	-	-	-	-	-	-
	pH	pH		0	-	-	-	-	-	-
7	TSS	mg/L	Upon discharge	0	-	-	-	-	-	-
	Conductivity	ms/cm		0	-	-	-	-	-	-
	Oil & Grease	mg/L		0	-	-	-	-	-	-
	pH	pH		0	-	-	-	-	-	-
8	TSS	mg/L	Upon discharge	0	-	-	-	-	-	-
	Conductivity	ms/cm		0	-	-	-	-	-	-
	Oil & Grease	mg/L		0	-	-	-	-	-	-
	pH	pH		0	-	-	-	-	-	-



Table 2 - Pollutant Limits Apply

EPL ID	Pollutant	Units of Measure	Monitoring Frequency	No. of Samples for the Month	Date Sampled	Date Obtained	Min Value	Max or Only Value	100%ile Limit	Exceedance (Yes/No)	Comments
1	TSS	mg/L	Upon discharge	0	-	-	-	-	50	-	-
	Oil & Grease	mg/L		0	-	-	-	-	10	-	-
	pH	pH		0	-	-	-	-	6.5-8.5	-	-
2	TSS	mg/L	Upon discharge	0	-	-	-	-	50	-	-
	Oil & Grease	mg/L		0	-	-	-	-	10	-	-
	pH	pH		0	-	-	-	-	6.5-8.5	-	-
3	TSS	mg/L	Upon discharge	0	-	-	-	-	50	-	-
	Oil & Grease	mg/L		0	-	-	-	-	10	-	-
	pH	pH		0	-	-	-	-	6.5-8.5	-	-
4 (No longer exists)	TSS	mg/L	Upon discharge	-	-	-	-	-	50	-	-
	Oil & Grease	mg/L		-	-	-	-	-	10	-	-
	pH	pH		-	-	-	-	-	6.5-8.5	-	-
24	TSS	mg/L	Upon discharge	0	-	-	-	-	50	-	-
	Oil & Grease	mg/L		0	-	-	-	-	10	-	-
	pH	pH		0	-	-	-	-	6.5-8.5	-	-
25	TSS	mg/L	Upon discharge	0	-	-	-	-	50	-	-
	Oil & Grease	mg/L		0	-	-	-	-	10	-	-
	pH	pH		0	-	-	-	-	6.5-8.5	-	-
26	TSS	mg/L	Upon discharge	0	-	-	-	-	50	-	-
	Oil & Grease	mg/L		0	-	-	-	-	10	-	-
	pH	pH		0	-	-	-	-	6.5-8.5	-	-
27	TSS	mg/L	Upon discharge	0	-	-	-	-	50	-	-
	Oil & Grease	mg/L		0	-	-	-	-	10	-	-
	pH	pH		0	-	-	-	-	6.5-8.5	-	-

Table 3 – Monitoring (Quarterly & 6 Monthly – No Limits apply)

EPL ID	Pollutant	Units of Measure	Monitoring Frequency	No. of Samples for the Period	Date Sampled	Date Obtained	Min Value	Mean Value	Median Value	Max or Only Value
9	Conductivity	ms/cm	6 monthly	1	20/2/2014	28/2/2014	-	-	-	3440
	Lead	mg/L		1	20/2/2014	28/2/2014	-	-	-	0.031
	pH	pH		1	20/2/2014	28/2/2014	-	-	-	7.65
	Standing Water Level	metres		1	20/2/2014	28/2/2014	-	-	-	6.08
10	Conductivity	ms/cm	6 monthly	1	20/2/2014	28/2/2014	-	-	-	694
	Lead	mg/L		1	20/2/2014	28/2/2014	-	-	-	0.006
	pH	pH		1	20/2/2014	28/2/2014	-	-	-	7.01
	Standing Water Level	metres		1	20/2/2014	28/2/2014	-	-	-	3.72
11	Conductivity	ms/cm	6 monthly	1	3/2/2014	4/3/2014	-	-	-	2140
	Lead	mg/L		1	3/2/2014	4/3/2014	-	-	-	<0.001
	pH	pH		1	3/2/2014	4/3/2014	-	-	-	7.76
	Standing Water Level	metres		0	-	-	-	-	-	-
12	Conductivity	ms/cm	6 monthly	1	24/2/2014	4/3/2014	-	-	-	3890
	Lead	mg/L		1	24/2/2014	4/3/2014	-	-	-	0.006
	pH	pH		1	24/2/2014	4/3/2014	-	-	-	7.98
	Standing Water Level	metres		1	24/2/2014	4/3/2014	-	-	-	8.94
13	Conductivity	ms/cm	Quarterly	1	20/2/2014	27/2/2014	-	-	-	1350
	Oil & Grease	mg/L		1	20/2/2014	27/2/2014	-	-	-	<5
	pH	pH		1	20/2/2014	27/2/2014	-	-	-	8.63
	TSS	mg/L		1	20/2/2014	27/2/2014	-	-	-	22

Table 4 – Monitoring (Noise – Limits Apply)

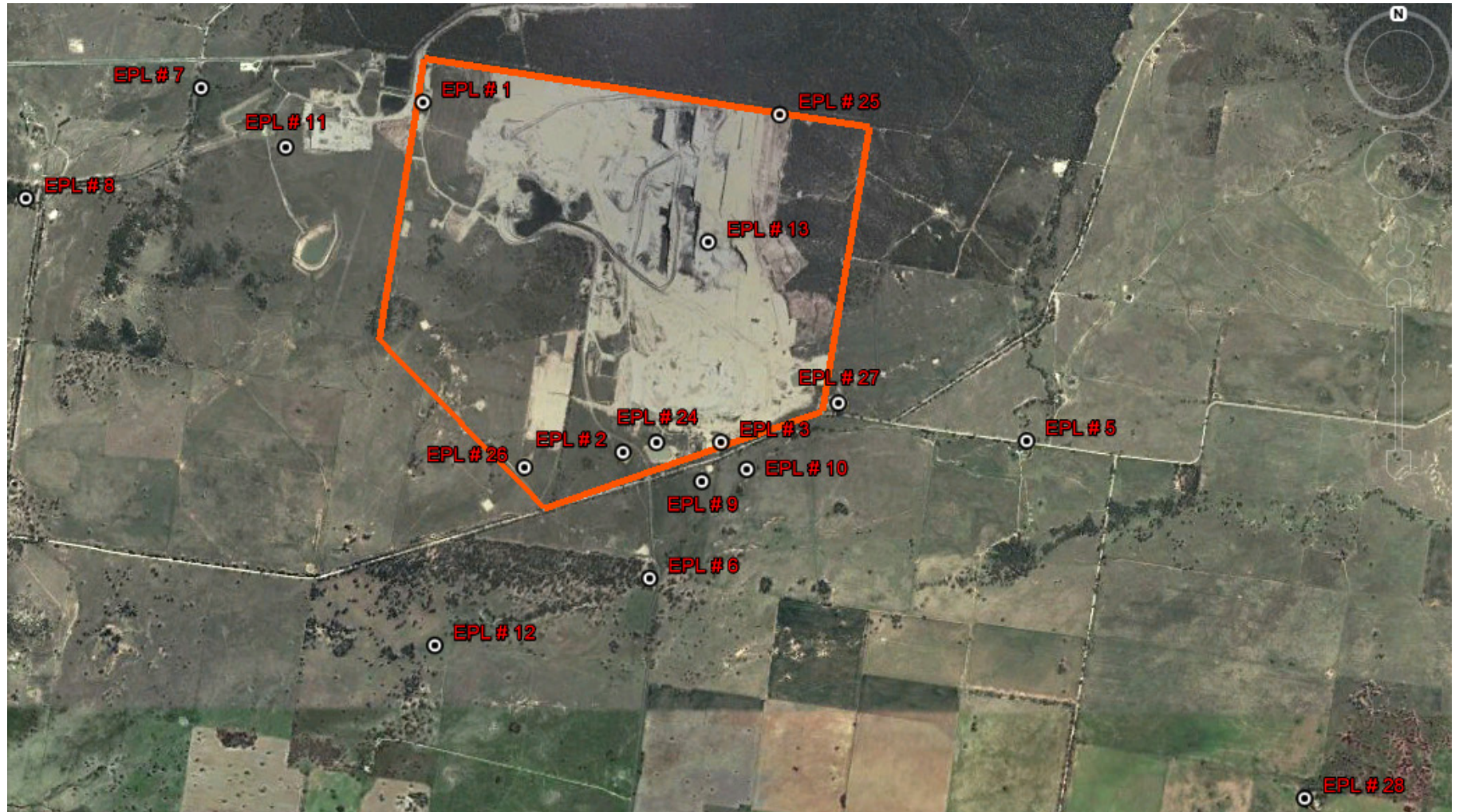
EPL ID	Date	Start Time	Measurement period	Measured Levels – dB(A) L _{eq} 15min Day	Measured Levels – dB(A) L _{eq} 15min Evening	Measured Levels – dB(A) L _{eq} 15min Night	Measured Levels – dB(A) L _{A1} (1 min) Night	Limit	Weather	Compliant (Yes/No)	Comments
N1			90 minutes					35			No monitoring this month
			30 minutes					35			
			60 minutes					35			
			60 minutes					45			
			90 minutes					35			
			30 minutes					35			
			60 minutes					35			
			60 minutes					45			
			90 minutes					35			
			30 minutes					35			
			60 minutes					35			

Note: Measured noise levels refer to noise attributable to Tarrawonga Coal Mine

Table 5 – Monitoring (Blasts – Limits Apply)

Location	Parameter	Units of Measure	Frequency	No. of Blasts for the Month	Average Value	Max Value	100%ile Limit	(Potential) Non-compliance /breach
Tarrawonga	Blast Noise	dB (Lin Peak)	Every Blast	4	98.85	106.3	120	Nil
	Blast Vibration	mm/s	Every Blast	4	0.22	0.61	10	Nil
Templemore	Blast Noise	dB (Lin Peak)	Every Blast	4	104.1	112.1	120	Nil
	Blast Vibration	mm/s	Every Blast	4	0.97	1.98	10	Nil

Figure 1 – EPL 12365 Monitoring Locations



TARRAWONGA COAL MINE – MONTHLY MONITORING SUMMARY

Site Information

EPL No: 12365

EPA Website Link: <http://www.environment.nsw.gov.au/prpoeoapp/ViewPOEOLicence.aspx?DOCID=32390&SYSUID=1&LICID=12365>

Licensee: Tarrawonga Coal Pty Ltd

Licensee Address: Tarrawonga Coal Mine, 469 Goonbri Road, BOGGABRI NSW 2382

EPL Monitoring Points: See Figure 1 below

Sampling Period: March 2014

Publication Date: 11th April 2014

Table 1 - No Pollutant Limits Apply

EPL ID	Pollutant	Units of Measure	Monitoring Frequency	No. of Samples for the Month	Date Sampled	Date Obtained	Min Value	Mean Value	Median Value	Max or Only Value
5	TSS	mg/L	Upon discharge	1	28/3/2014	8/4/14	-	-	-	88
	Conductivity	ms/cm		1	28/3/2014	8/4/14	-	-	-	131
	Oil & Grease	mg/L		1	28/3/2014	8/4/14	-	-	-	<5
	pH	pH		1	28/3/2014	8/4/14	-	-	-	7.19
6	TSS	mg/L	Upon discharge	0	28/3/2014	8/4/14	-	-	-	89
	Conductivity	ms/cm		0	28/3/2014	8/4/14	-	-	-	87
	Oil & Grease	mg/L		0	28/3/2014	8/4/14	-	-	-	<5
	pH	pH		0	28/3/2014	8/4/14	-	-	-	6.92
7	TSS	mg/L	Upon discharge	3	21,25,28/3/2014	31/3 & 2,8/4/14	26	86	72	160
	Conductivity	ms/cm		3	21,25,28/3/2014	31/3 & 2,8/4/14	34	82.6	93	121
	Oil & Grease	mg/L		3	21,25,28/3/2014	31/3 & 2,8/4/14	<5	<5	<5	<5
	pH	pH		3	21,25,28/3/2014	31/3 & 2,8/4/14	6.93	6.99	6.99	7.05
8	TSS	mg/L	Upon	3	21,25,28/3/2014	31/3 & 2,8/4/14	103	223.5	160	631

EPL ID	Pollutant	Units of Measure	Monitoring Frequency	No. of Samples for the Month	Date Sampled	Date Obtained	Min Value	Mean Value	Median Value	Max or Only Value
	Conductivity	ms/cm	discharge	3	21,25,28/3/2014	31/3 & 2,8/4/14	94	112	166	188
	Oil & Grease	mg/L		3	21,25,28/3/2014	31/3 & 2,8/4/14	<5	<5	<5	<5
	pH	pH		3	21,25,28/3/2014	31/3 & 2,8/4/14	7.04	7.16	7.12	7.31

Table 2 - Pollutant Limits Apply

EPL ID	Pollutant	Units of Measure	Monitoring Frequency	No. of Samples for the Month	Date Sampled	Date Obtained	Min Value	Max or Only Value	100%ile Limit	Exceedance (Yes/No)	Comments
1	TSS	mg/L	Upon discharge	0	-	-	-	-	50	-	-
	Oil & Grease	mg/L		0	-	-	-	-	10	-	-
	pH	pH		0	-	-	-	-	6.5-8.5	-	-
2	TSS	mg/L	Upon discharge	1	28/3/2014	8/4/14	-	12	50	No	-
	Oil & Grease	mg/L		1	28/3/2014	8/4/14	-	<5	10	No	-
	pH	pH		1	28/3/2014	8/4/14	-	7.21	6.5-8.5	No	-
3	TSS	mg/L	Upon discharge	0	-	-	-	-	50	-	-
	Oil & Grease	mg/L		0	-	-	-	-	10	-	-
	pH	pH		0	-	-	-	-	6.5-8.5	-	-
4 (No longer exists)	TSS	mg/L	Upon discharge	-	-	-	-	-	50	-	-
	Oil & Grease	mg/L		-	-	-	-	-	10	-	-
	pH	pH		-	-	-	-	-	6.5-8.5	-	-
24	TSS	mg/L	Upon discharge	0	-	-	-	-	50	-	-
	Oil & Grease	mg/L		0	-	-	-	-	10	-	-
	pH	pH		0	-	-	-	-	6.5-8.5	-	-
25	TSS	mg/L	Upon discharge	0	-	-	-	-	50	-	-
	Oil & Grease	mg/L		0	-	-	-	-	10	-	-
	pH	pH		0	-	-	-	-	6.5-8.5	-	-

EPL ID	Pollutant	Units of Measure	Monitoring Frequency	No. of Samples for the Month	Date Sampled	Date Obtained	Min Value	Max or Only Value	100%ile Limit	Exceedance (Yes/No)	Comments
26	TSS	mg/L	Upon discharge	0	-	-	-	-	50	-	-
	Oil & Grease	mg/L		0	-	-	-	-	10	-	-
	pH	pH		0	-	-	-	-	6.5-8.5	-	-
27	TSS	mg/L	Upon discharge	0	-	-	-	-	50	-	-
	Oil & Grease	mg/L		0	-	-	-	-	10	-	-
	pH	pH		0	-	-	-	-	6.5-8.5	-	-

Table 3 – Monitoring (Quarterly & 6 Monthly – No Limits apply)

EPL ID	Pollutant	Units of Measure	Monitoring Frequency	No. of Samples for the Period	Date Sampled	Date Obtained	Min Value	Mean Value	Median Value	Max or Only Value
9	Conductivity	ms/cm	6 monthly	0	-	-	-	-	-	-
	Lead	mg/L		0	-	-	-	-	-	-
	pH	pH		0	-	-	-	-	-	-
	Standing Water Level	metres		0	-	-	-	-	-	-
10	Conductivity	ms/cm	6 monthly	0	-	-	-	-	-	-
	Lead	mg/L		0	-	-	-	-	-	-
	pH	pH		0	-	-	-	-	-	-
	Standing Water Level	metres		0	-	-	-	-	-	-
11	Conductivity	ms/cm	6 monthly	0	-	-	-	-	-	-
	Lead	mg/L		0	-	-	-	-	-	-
	pH	pH		0	-	-	-	-	-	-
	Standing Water Level	metres		0	-	-	-	-	-	-
12	Conductivity	ms/cm	6 monthly	0	-	-	-	-	-	-
	Lead	mg/L		0	-	-	-	-	-	-
	pH	pH		0	-	-	-	-	-	-
	Standing Water Level	metres		0	-	-	-	-	-	-

EPL ID	Pollutant	Units of Measure	Monitoring Frequency	No. of Samples for the Period	Date Sampled	Date Obtained	Min Value	Mean Value	Median Value	Max or Only Value
13	Conductivity	ms/cm	Quarterly	0	-	-	-	-	-	-
	Oil & Grease	mg/L		0	-	-	-	-	-	-
	pH	pH		0	-	-	-	-	-	-
	TSS	mg/L		0	-	-	-	-	-	-

Table 4 – Monitoring (Noise – Limits Apply)

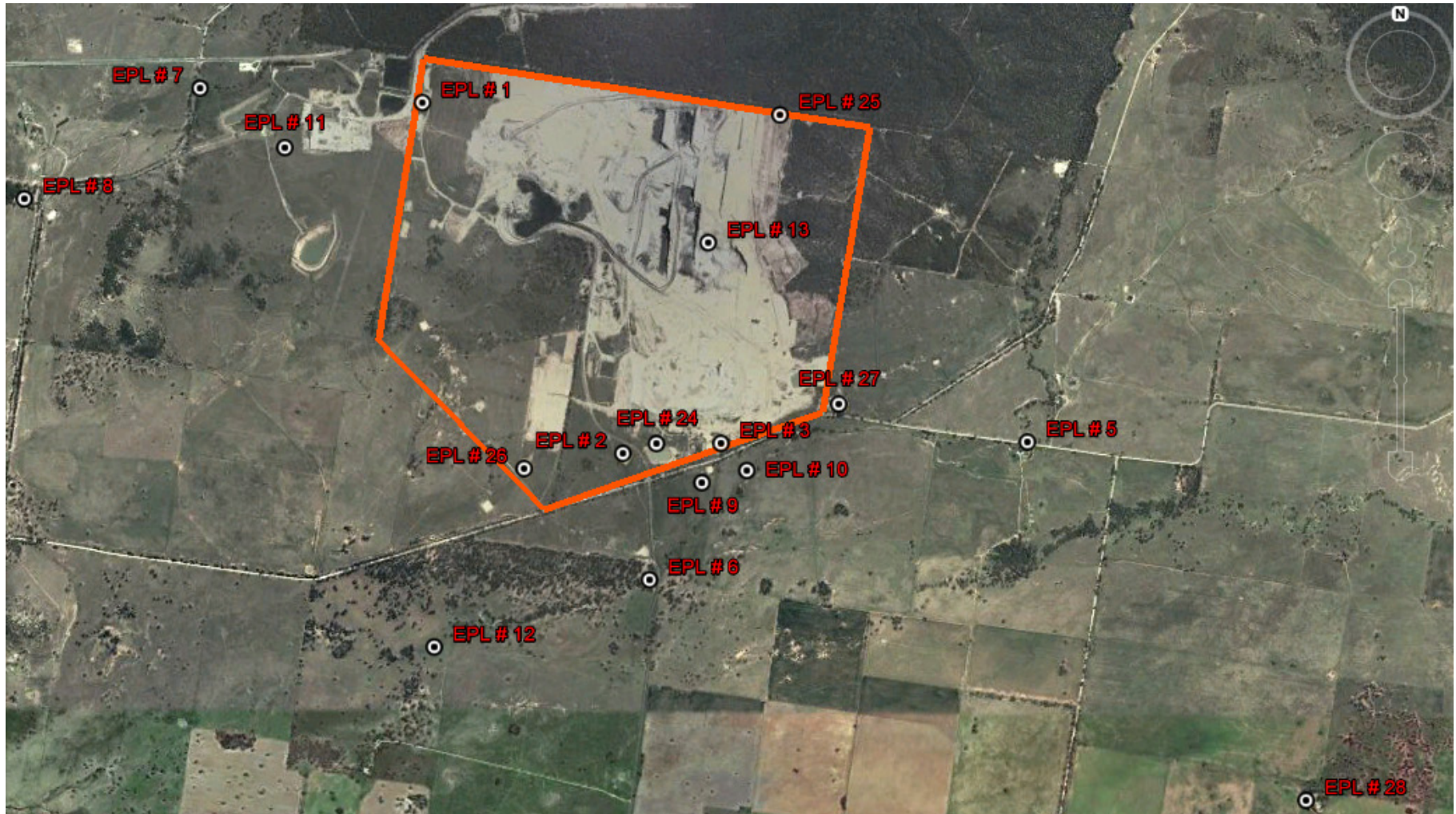
EPL ID	Date	Start Time	Measurement period	Measured Levels – dB(A) <i>L</i> _{eq} 15min Day	Measured Levels – dB(A) <i>L</i> _{eq} 15min Evening	Measured Levels – dB(A) <i>L</i> _{eq} 15min Night	Measured Levels – dB(A) <i>L</i> _{A1} (1 min) Night	Limit	Weather	Compliant (Yes/No)	Comments
N1	6/3/14	10:40am	90 minutes	24				35	1.2m/s NW	Yes	
	3/3/14	9:11pm	30 minutes		35			35	0.9m/s SE	Yes	
	3/3/14	1:17am	60 minutes			35		35	1.2m/s ESE	Yes	
	3/3/14	1:17am	60 minutes				42	45	1.2m/s ESE	Yes	
	4/3/14	1:22pm	90 minutes	21				35	0.9m/s SE	Yes	
	4/3/14	7:38pm	30 minutes		33			35	Calm	Yes	
	4/3/14	10:11pm	60 minutes			35		35	0.5m/s SSE	Yes	
	4/3/14	10:11pm	60 minutes				43	45	0.5m/s SSE	Yes	
	5/3/14	1:54pm	90 minutes	20				35	0.9m/s SW	Yes	
	5/3/14	9:24pm	30 minutes		24			35	Calm	Yes	
	5/3/14	1:21am	60 minutes			34		35	0.1m/s SSE	Yes	
5/3/14	1:21am	60 minutes				40	45	0.1m/s SSE	Yes		

Note: Measured noise levels refer to noise attributable to Tarrawonga Coal Mine

Table 5 – Monitoring (Blasts – Limits Apply)

Location	Parameter	Units of Measure	Frequency	No. of Blasts for the Month	Average Value	Max Value	100%ile Limit	(Potential) Non-compliance /breach
Tarrawonga	Blast Noise	dB (Lin Peak)	Every Blast	4	100.8	105.6	120	Nil
	Blast Vibration	mm/s	Every Blast	4	0.62	1.77	10	Nil
Templemore	Blast Noise	dB (Lin Peak)	Every Blast	4	100.5	109.1	120	Nil
	Blast Vibration	mm/s	Every Blast	4	0.4	0.66	10	Nil

Figure 1 – EPL 12365 Monitoring Locations



TARRAWONGA COAL MINE – MONTHLY MONITORING SUMMARY

Site Information

EPL No: 12365

EPA Website Link: <http://www.environment.nsw.gov.au/prpoeoapp/ViewPOEOLicence.aspx?DOCID=32390&SYSUID=1&LICID=12365>

Licensee: Tarrawonga Coal Pty Ltd

Licensee Address: Tarrawonga Coal Mine, 469 Goonbri Road, BOGGABRI NSW 2382

EPL Monitoring Points: See Figure 1 below

Sampling Period: April 2014

Publication Date: 7th May 2014

Table 1 - No Pollutant Limits Apply

EPL ID	Pollutant	Units of Measure	Monitoring Frequency	No. of Samples for the Month	Date Sampled	Date Obtained	Min Value	Mean Value	Median Value	Max or Only Value
5	TSS	mg/L	Upon discharge	0	-	-	-	-	-	-
	Conductivity	ms/cm		0	-	-	-	-	-	-
	Oil & Grease	mg/L		0	-	-	-	-	-	-
	pH	pH		0	-	-	-	-	-	-
6	TSS	mg/L	Upon discharge	0	-	-	-	-	-	-
	Conductivity	ms/cm		0	-	-	-	-	-	-
	Oil & Grease	mg/L		0	-	-	-	-	-	-
	pH	pH		0	-	-	-	-	-	-
7	TSS	mg/L	Upon discharge	0	-	-	-	-	-	-
	Conductivity	ms/cm		0	-	-	-	-	-	-
	Oil & Grease	mg/L		0	-	-	-	-	-	-
	pH	pH		0	-	-	-	-	-	-
8	TSS	mg/L	Upon discharge	0	-	-	-	-	-	-
	Conductivity	ms/cm		0	-	-	-	-	-	-
	Oil & Grease	mg/L		0	-	-	-	-	-	-
	pH	pH		0	-	-	-	-	-	-



Table 2 - Pollutant Limits Apply

EPL ID	Pollutant	Units of Measure	Monitoring Frequency	No. of Samples for the Month	Date Sampled	Date Obtained	Min Value	Max or Only Value	100%ile Limit	Exceedance (Yes/No)	Comments
1	TSS	mg/L	Upon discharge	0	-	-	-	-	-	-	-
	Oil & Grease	mg/L		0	-	-	-	-	-	-	-
	pH	pH		0	-	-	-	-	-	-	-
2	TSS	mg/L	Upon discharge	0	-	-	-	-	-	-	-
	Oil & Grease	mg/L		0	-	-	-	-	-	-	-
	pH	pH		0	-	-	-	-	-	-	-
3	TSS	mg/L	Upon discharge	0	-	-	-	-	-	-	-
	Oil & Grease	mg/L		0	-	-	-	-	-	-	-
	pH	pH		0	-	-	-	-	-	-	-
4 (No longer exists)	TSS	mg/L	Upon discharge	-	-	-	-	-	-	-	-
	Oil & Grease	mg/L		-	-	-	-	-	-	-	-
	pH	pH		-	-	-	-	-	-	-	-
24	TSS	mg/L	Upon discharge	0	-	-	-	-	-	-	-
	Oil & Grease	mg/L		0	-	-	-	-	-	-	-
	pH	pH		0	-	-	-	-	-	-	-
25	TSS	mg/L	Upon discharge	0	-	-	-	-	-	-	-
	Oil & Grease	mg/L		0	-	-	-	-	-	-	-
	pH	pH		0	-	-	-	-	-	-	-
26	TSS	mg/L	Upon discharge	0	-	-	-	-	-	-	-
	Oil & Grease	mg/L		0	-	-	-	-	-	-	-
	pH	pH		0	-	-	-	-	-	-	-
27	TSS	mg/L	Upon discharge	0	-	-	-	-	-	-	-
	Oil & Grease	mg/L		0	-	-	-	-	-	-	-
	pH	pH		0	-	-	-	-	-	-	-

Table 3 – Monitoring (Quarterly & 6 Monthly – No Limits apply)

EPL ID	Pollutant	Units of Measure	Monitoring Frequency	No. of Samples for the Period	Date Sampled	Date Obtained	Min Value	Mean Value	Median Value	Max or Only Value
9	Conductivity	ms/cm	6 monthly	0	-	-	-	-	-	-
	Lead	mg/L		0	-	-	-	-	-	-
	pH	pH		0	-	-	-	-	-	-
	Standing Water Level	metres		0	-	-	-	-	-	-
10	Conductivity	ms/cm	6 monthly	0	-	-	-	-	-	-
	Lead	mg/L		0	-	-	-	-	-	-
	pH	pH		0	-	-	-	-	-	-
	Standing Water Level	metres		0	-	-	-	-	-	-
11	Conductivity	ms/cm	6 monthly	0	-	-	-	-	-	-
	Lead	mg/L		0	-	-	-	-	-	-
	pH	pH		0	-	-	-	-	-	-
	Standing Water Level	metres		0	-	-	-	-	-	-
12	Conductivity	ms/cm	6 monthly	0	-	-	-	-	-	-
	Lead	mg/L		0	-	-	-	-	-	-
	pH	pH		0	-	-	-	-	-	-
	Standing Water Level	metres		0	-	-	-	-	-	-
13	Conductivity	ms/cm	Quarterly	0	-	-	-	-	-	-
	Oil & Grease	mg/L		0	-	-	-	-	-	-
	pH	pH		0	-	-	-	-	-	-
	TSS	mg/L		0	-	-	-	-	-	-

Table 4 – Monitoring (Noise – Limits Apply)

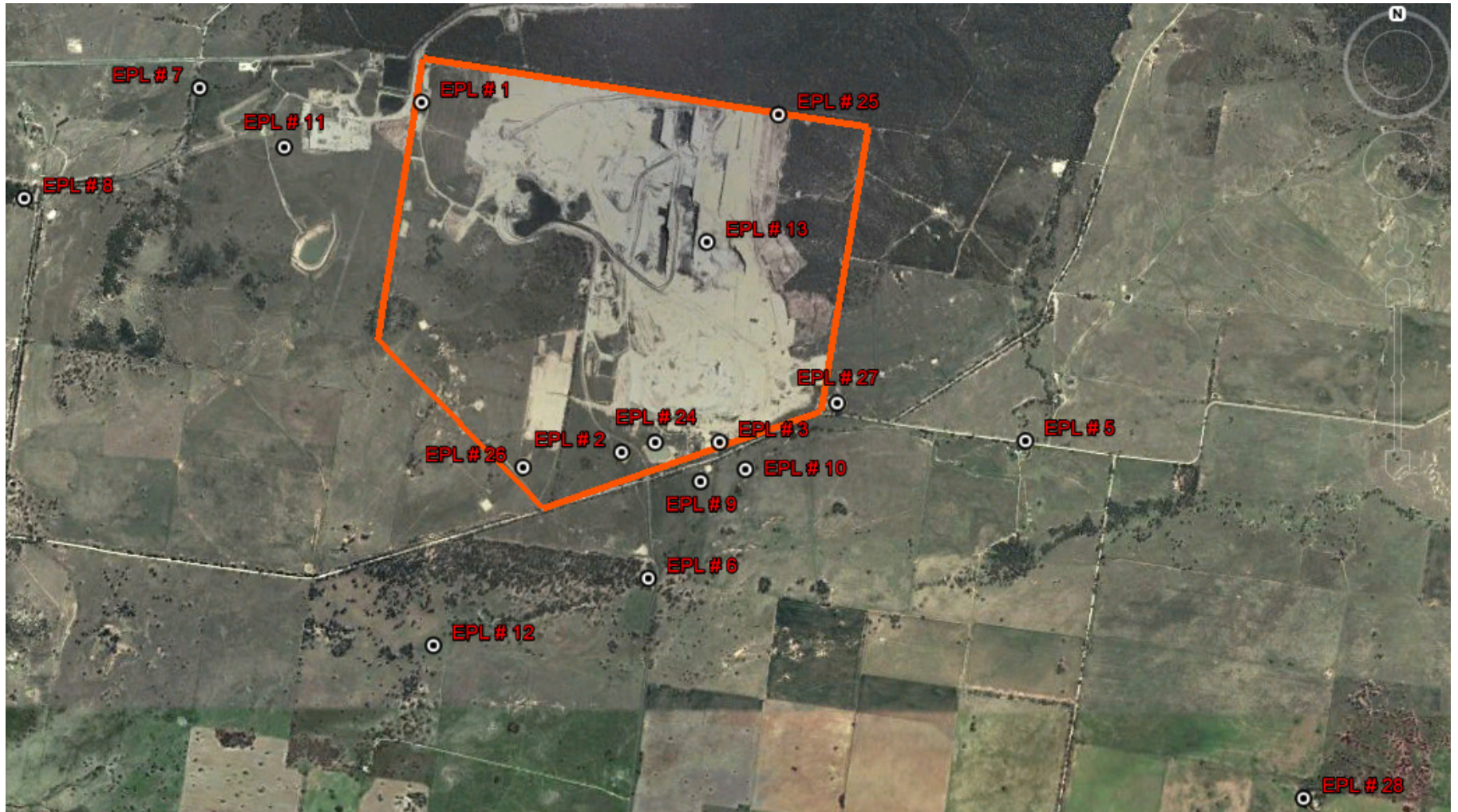
EPL ID	Date	Start Time	Measurement period	Measured Levels – dB(A)	Measured Levels – dB(A)	Measured Levels – dB(A)	Measured Levels – dB(A)	Limit	Weather	Compliant (Yes/No)	Comments
				L _{eq} 15min Day	L _{eq} 15min Evening	L _{eq} 15min Night	L _{A1} (1 min) Night				
N1			90 minutes								No monitoring this month
			30 minutes								
			60 minutes								
			60 minutes								
			90 minutes								
			30 minutes								
			60 minutes								
			60 minutes								
			90 minutes								
			30 minutes								
			60 minutes								
			60 minutes								

Note: Measured noise levels refer to noise attributable to Tarrawonga Coal Mine

Table 5 – Monitoring (Blasts – Limits Apply)

Location	Parameter	Units of Measure	Frequency	No. of Blasts for the Month	Average Value	Max Value	100%ile Limit	(Potential) Non-compliance /breach
Tarrawonga	Blast Noise	dB (Lin Peak)	Every Blast	6	97.1	102.1	120	Nil
	Blast Vibration	mm/s	Every Blast	6	0.22	0.59	10	Nil
Templemore	Blast Noise	dB (Lin Peak)	Every Blast	6	98.3	103.1	120	Nil
	Blast Vibration	mm/s	Every Blast	6	0.18	0.46	10	Nil

Figure 1 – EPL 12365 Monitoring Locations





TARRAWONGA COAL MINE – MONTHLY MONITORING SUMMARY

Site Information

EPL No: 12365

EPA Website Link: <http://www.environment.nsw.gov.au/prpoeoapp/ViewPOEOLicence.aspx?DOCID=32390&SYSUID=1&LICID=12365>

Licensee: Tarrawonga Coal Pty Ltd

Licensee Address: Tarrawonga Coal Mine, 469 Goonbri Road, BOGGABRI NSW 2382

EPL Monitoring Points: See Figure 1 below

Sampling Period: May 2014

Publication Date: 11th June 2014

Table 1 - No Pollutant Limits Apply

EPL ID	Pollutant	Units of Measure	Monitoring Frequency	No. of Samples for the Month	Date Sampled	Date Obtained	Min Value	Mean Value	Median Value	Max or Only Value
5	TSS	mg/L	Upon discharge	0						
	Conductivity	ms/cm		0						
	Oil & Grease	mg/L		0						
	pH	pH		0						
6	TSS	mg/L	Upon discharge	0						
	Conductivity	ms/cm		0						
	Oil & Grease	mg/L		0						
	pH	pH		0						
7	TSS	mg/L	Upon discharge	0						
	Conductivity	ms/cm		0						
	Oil & Grease	mg/L		0						
	pH	pH		0						
8	TSS	mg/L	Upon discharge	0						
	Conductivity	ms/cm		0						
	Oil & Grease	mg/L		0						
	pH	pH		0						

Table 2 - Pollutant Limits Apply

EPL ID	Pollutant	Units of Measure	Monitoring Frequency	No. of Samples for the Month	Date Sampled	Date Obtained	Min Value	Max or Only Value	100%ile Limit	Exceedance (Yes/No)	Comments
1	TSS	mg/L	Upon discharge	0							
	Oil & Grease	mg/L		0							
	pH	pH		0							
2	TSS	mg/L	Upon discharge	0							
	Oil & Grease	mg/L		0							
	pH	pH		0							
3	TSS	mg/L	Upon discharge	0							
	Oil & Grease	mg/L		0							
	pH	pH		0							
4 (No longer exists)	TSS	mg/L	Upon discharge	0							
	Oil & Grease	mg/L		0							
	pH	pH		0							
24	TSS	mg/L	Upon discharge	0							
	Oil & Grease	mg/L		0							
	pH	pH		0							
25	TSS	mg/L	Upon discharge	0							
	Oil & Grease	mg/L		0							
	pH	pH		0							
26	TSS	mg/L	Upon discharge	0							
	Oil & Grease	mg/L		0							
	pH	pH		0							
27	TSS	mg/L	Upon discharge	0							
	Oil & Grease	mg/L		0							
	pH	pH		0							

Table 3 – Monitoring (Quarterly & 6 Monthly – No Limits apply)

EPL ID	Pollutant	Units of Measure	Monitoring Frequency	No. of Samples for the Period	Date Sampled	Date Obtained	Min Value	Mean Value	Median Value	Max or Only Value
9	Conductivity	ms/cm	6 monthly	0						
	Lead	mg/L		0						
	pH	pH		0						
	Standing Water Level	metres		0						
10	Conductivity	ms/cm	6 monthly	0						
	Lead	mg/L		0						
	pH	pH		0						
	Standing Water Level	metres		0						
11	Conductivity	ms/cm	6 monthly	0						
	Lead	mg/L		0						
	pH	pH		0						
	Standing Water Level	metres		0						
12	Conductivity	ms/cm	6 monthly	0						
	Lead	mg/L		0						
	pH	pH		0						
	Standing Water Level	metres		0						
13	Conductivity	ms/cm	Quarterly	1	6/5/2014	13/5/2014	-	-	-	3280
	Oil & Grease	mg/L		1	6/5/2014	13/5/2014	-	-	-	<5
	pH	pH		1	6/5/2014	13/5/2014	-	-	-	8.31
	TSS	mg/L		1	6/5/2014	13/5/2014	-	-	-	213

Table 4 – Monitoring (Noise – Limits Apply)

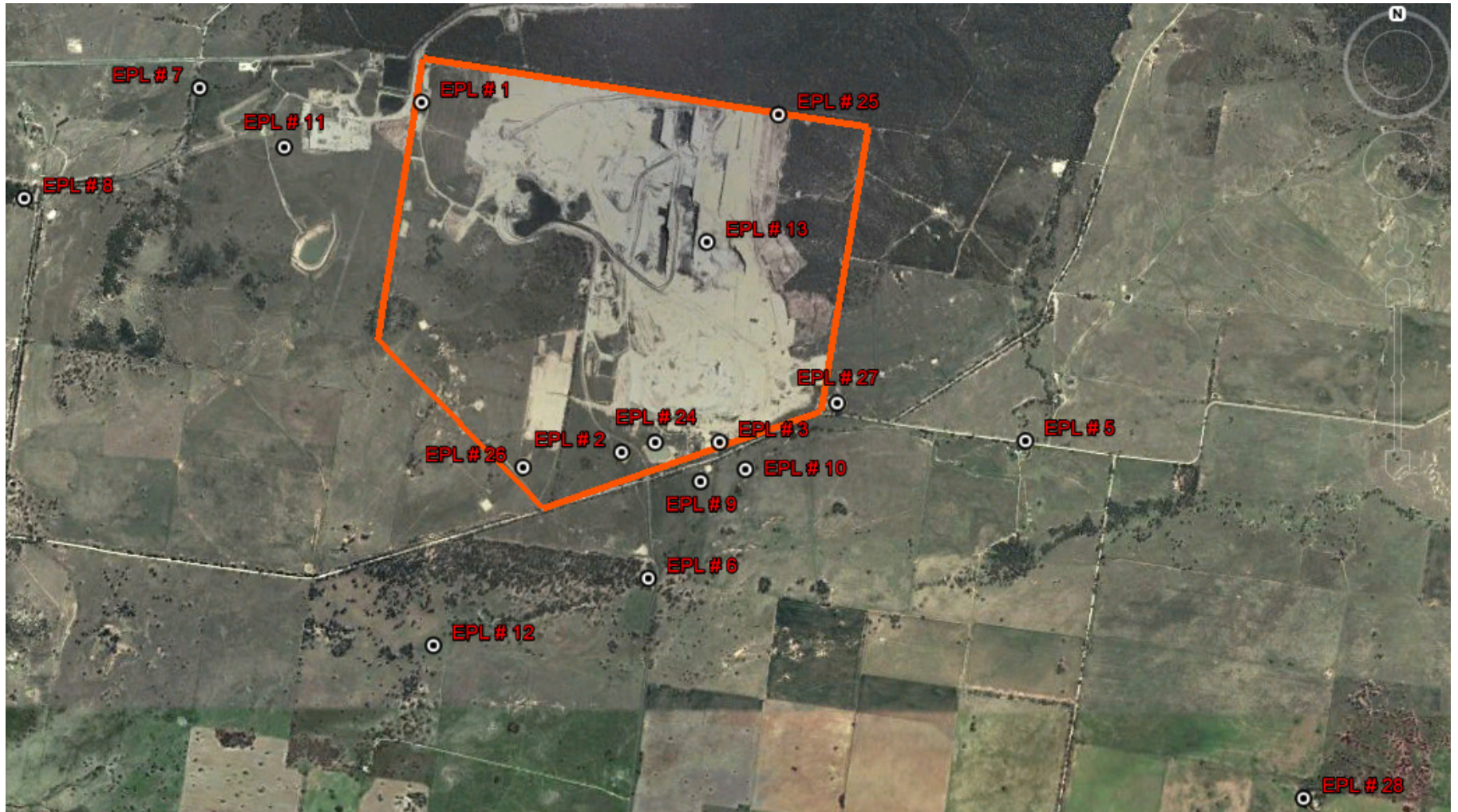
EPL ID	Date	Start Time	Measurement period	Measured Levels – dB(A)	Measured Levels – dB(A)	Measured Levels – dB(A)	Measured Levels – dB(A)	Limit	Weather	Compliant (Yes/No)	Comments
				L _{eq} 15min Day	L _{eq} 15min Evening	L _{eq} 15min Night	L _{A1} (1 min) Night				
N1			90 minutes								No monitoring this month
			30 minutes								
			60 minutes								
			60 minutes								
			90 minutes								
			30 minutes								
			60 minutes								
			60 minutes								
			90 minutes								
			30 minutes								
			60 minutes								
			60 minutes								

Note: Measured noise levels refer to noise attributable to Tarrawonga Coal Mine

Table 5 – Monitoring (Blasts – Limits Apply)

Location	Parameter	Units of Measure	Frequency	No. of Blasts for the Month	Average Value	Max Value	100%ile Limit	(Potential) Non-compliance /breach
Tarrawonga	Blast Noise	dB (Lin Peak)	Every Blast	10	95.96	104.6	120	Nil
	Blast Vibration	mm/s	Every Blast	10	0.24	0.52	10	Nil
Templemore	Blast Noise	dB (Lin Peak)	Every Blast	10	95.21	106.7	120	Nil
	Blast Vibration	mm/s	Every Blast	10	0.14	0.48	10	Nil

Figure 1 – EPL 12365 Monitoring Locations



TARRAWONGA COAL MINE – MONTHLY MONITORING SUMMARY

Site Information

EPL No: 12365

EPA Website Link: <http://www.environment.nsw.gov.au/prpoeoapp/ViewPOEOLicence.aspx?DOCID=32390&SYSUID=1&LICID=12365>

Licensee: Tarrawonga Coal Pty Ltd

Licensee Address: Tarrawonga Coal Mine, 469 Goonbri Road, BOGGABRI NSW 2382

EPL Monitoring Points: See Figure 1 below

Sampling Period: June 2014

Publication Date: 21st July 2014

Table 1 - No Pollutant Limits Apply

EPL ID	Pollutant	Units of Measure	Monitoring Frequency	No. of Samples for the Month	Date Sampled	Date Obtained	Min Value	Mean Value	Median Value	Max or Only Value
5	TSS	mg/L	Upon discharge	0	-	-	-	-	-	-
	Conductivity	ms/cm		0	-	-	-	-	-	-
	Oil & Grease	mg/L		0	-	-	-	-	-	-
	pH	pH		0	-	-	-	-	-	-
6	TSS	mg/L	Upon discharge	0	-	-	-	-	-	-
	Conductivity	ms/cm		0	-	-	-	-	-	-
	Oil & Grease	mg/L		0	-	-	-	-	-	-
	pH	pH		0	-	-	-	-	-	-
7	TSS	mg/L	Upon discharge	0	-	-	-	-	-	-
	Conductivity	ms/cm		0	-	-	-	-	-	-
	Oil & Grease	mg/L		0	-	-	-	-	-	-
	pH	pH		0	-	-	-	-	-	-
8	TSS	mg/L	Upon discharge	0	-	-	-	-	-	-
	Conductivity	ms/cm		0	-	-	-	-	-	-
	Oil & Grease	mg/L		0	-	-	-	-	-	-
	pH	pH		0	-	-	-	-	-	-



Table 2 - Pollutant Limits Apply

EPL ID	Pollutant	Units of Measure	Monitoring Frequency	No. of Samples for the Month	Date Sampled	Date Obtained	Min Value	Max or Only Value	100%ile Limit	Exceedance (Yes/No)	Comments
1	TSS	mg/L	Upon discharge	0	-	-	-	-	-	-	-
	Oil & Grease	mg/L		0	-	-	-	-	-	-	-
	pH	pH		0	-	-	-	-	-	-	-
2	TSS	mg/L	Upon discharge	0	-	-	-	-	-	-	-
	Oil & Grease	mg/L		0	-	-	-	-	-	-	-
	pH	pH		0	-	-	-	-	-	-	-
3	TSS	mg/L	Upon discharge	0	-	-	-	-	-	-	-
	Oil & Grease	mg/L		0	-	-	-	-	-	-	-
	pH	pH		0	-	-	-	-	-	-	-
4 (No longer exists)	TSS	mg/L	Upon discharge	-	-	-	-	-	-	-	-
	Oil & Grease	mg/L		-	-	-	-	-	-	-	-
	pH	pH		-	-	-	-	-	-	-	-
24	TSS	mg/L	Upon discharge	0	-	-	-	-	-	-	-
	Oil & Grease	mg/L		0	-	-	-	-	-	-	-
	pH	pH		0	-	-	-	-	-	-	-
25	TSS	mg/L	Upon discharge	0	-	-	-	-	-	-	-
	Oil & Grease	mg/L		0	-	-	-	-	-	-	-
	pH	pH		0	-	-	-	-	-	-	-
26	TSS	mg/L	Upon discharge	0	-	-	-	-	-	-	-
	Oil & Grease	mg/L		0	-	-	-	-	-	-	-
	pH	pH		0	-	-	-	-	-	-	-
27	TSS	mg/L	Upon discharge	0	-	-	-	-	-	-	-
	Oil & Grease	mg/L		0	-	-	-	-	-	-	-
	pH	pH		0	-	-	-	-	-	-	-

Table 3 – Monitoring (Quarterly & 6 Monthly – No Limits apply)

EPL ID	Pollutant	Units of Measure	Monitoring Frequency	No. of Samples for the Period	Date Sampled	Date Obtained	Min Value	Mean Value	Median Value	Max or Only Value
9	Conductivity	ms/cm	6 monthly	0	-	-	-	-	-	-
	Lead	mg/L		0	-	-	-	-	-	-
	pH	pH		0	-	-	-	-	-	-
	Standing Water Level	metres		0	-	-	-	-	-	-
10	Conductivity	ms/cm	6 monthly	0	-	-	-	-	-	-
	Lead	mg/L		0	-	-	-	-	-	-
	pH	pH		0	-	-	-	-	-	-
	Standing Water Level	metres		0	-	-	-	-	-	-
11	Conductivity	ms/cm	6 monthly	0	-	-	-	-	-	-
	Lead	mg/L		0	-	-	-	-	-	-
	pH	pH		0	-	-	-	-	-	-
	Standing Water Level	metres		0	-	-	-	-	-	-
12	Conductivity	ms/cm	6 monthly	0	-	-	-	-	-	-
	Lead	mg/L		0	-	-	-	-	-	-
	pH	pH		0	-	-	-	-	-	-
	Standing Water Level	metres		0	-	-	-	-	-	-
13	Conductivity	ms/cm	Quarterly	0	-	-	-	-	-	-
	Oil & Grease	mg/L		0	-	-	-	-	-	-
	pH	pH		0	-	-	-	-	-	-
	TSS	mg/L		0	-	-	-	-	-	-

Table 4 – Monitoring (Noise – Limits Apply)

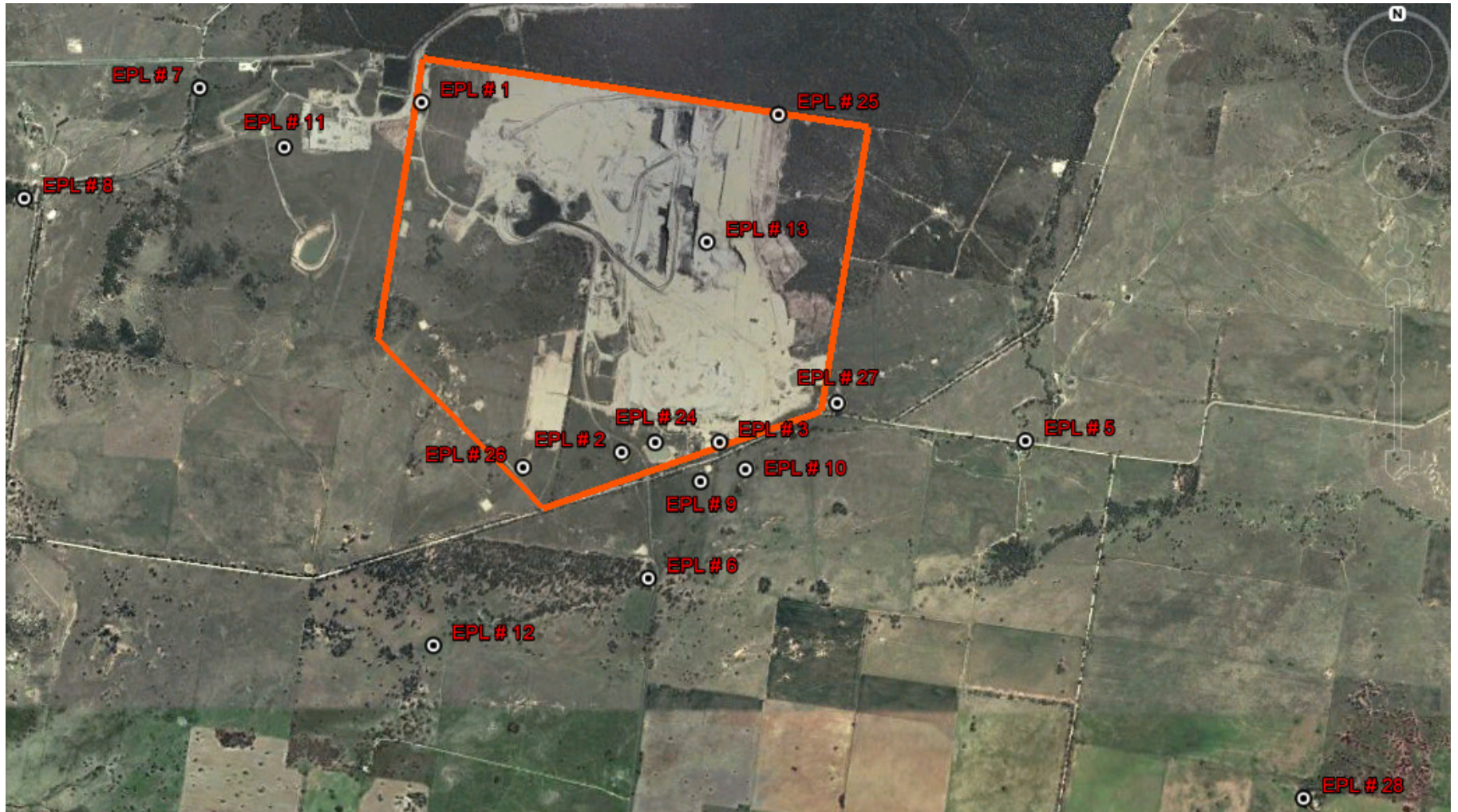
EPL ID	Date	Start Time	Measurement period	Measured Levels – dB(A) L_{eq} 15min Day	Measured Levels – dB(A) L_{eq} 15min Evening	Measured Levels – dB(A) L_{eq} 15min Night	Measured Levels – dB(A) L_{A1} (1 min) Night	Limit	Weather	Compliant (Yes/No)	Comments
N1	10/6/2014	1.48pm	90 minutes	32				35	5.7m/s 125°	Yes	Project Owned Land – noise criteria do not apply
	10/6/2014	9.29pm	30 minutes		Inaudible			35	5.2m/s 113°	Yes	
	10/6/2014	1.36am	60 minutes			28		35	1.1m/s 143°	Yes	
	10/6/2014	1.36am	60 minutes				35	45	1.1m/s 143°	Yes	
	11/6/2014	2.27pm	90 minutes	28				35	2.1m/s 163°	Yes	
	11/6/2014	9.20pm	30 minutes		Inaudible			35	0.8m/s 342°	Yes	
	11/6/2014	1.29am	60 minutes			44		35	Calm	Yes	
	11/6/2014	1.29am	60 minutes				51	45	Calm	Yes	
	12/6/2014	9.17am	90 minutes	43				35	1.3m/s 158°	Yes	
	12/6/2014	9.27pm	30 minutes		37			35	1.4m/s 353°	Yes	
	12/6/2014	1.37am	60 minutes			43		35	0.6 m/s 307°	Yes	
12/6/2014	1.36am	60 minutes				51	45	0.6m/s 307°	Yes		

Note: Measured noise levels refer to noise attributable to Tarrawonga Coal Mine

Table 5 – Monitoring (Blasts – Limits Apply)

Location	Parameter	Units of Measure	Frequency	No. of Blasts for the Month	Average Value	Max Value	100%ile Limit	(Potential) Non-compliance /breach
Tarrawonga	Blast Noise	dB (Lin Peak)	Every Blast	5	99.0	106.1	120	Nil
	Blast Vibration	mm/s	Every Blast	5	0.3	0.5	10	Nil
Matong	Blast Noise	dB (Lin Peak)	Every Blast	5	102.22	122.7	120	Nil – project related property
	Blast Vibration	mm/s	Every Blast	5	0.26	0.51	10	Nil

Figure 1 – EPL 12365 Monitoring Locations



TARRAWONGA COAL MINE – MONTHLY MONITORING SUMMARY

Site Information

EPL No: 12365

EPA Website Link: <http://www.environment.nsw.gov.au/prpoeoapp/ViewPOEOLicence.aspx?DOCID=32390&SYSUID=1&LICID=12365>

Licensee: Tarrawonga Coal Pty Ltd

Licensee Address: Tarrawonga Coal Mine, 469 Goonbri Road, BOGGABRI NSW 2382

EPL Monitoring Points: See Figure 1 below

Sampling Period: July 2014

Publication Date: 10th August 2014 (republished 18th November 2014)

Table 1 - No Pollutant Limits Apply

EPL ID	Pollutant	Units of Measure	Monitoring Frequency	No. of Samples for the Month	Date Sampled	Date Obtained	Min Value	Mean Value	Median Value	Max or Only Value
5	TSS	mg/L	Upon discharge	0	-	-	-	-	-	-
	Conductivity	ms/cm		0	-	-	-	-	-	-
	Oil & Grease	mg/L		0	-	-	-	-	-	-
	pH	pH		0	-	-	-	-	-	-
6	TSS	mg/L	Upon discharge	0	-	-	-	-	-	-
	Conductivity	ms/cm		0	-	-	-	-	-	-
	Oil & Grease	mg/L		0	-	-	-	-	-	-
	pH	pH		0	-	-	-	-	-	-
7	TSS	mg/L	Upon discharge	0	-	-	-	-	-	-
	Conductivity	ms/cm		0	-	-	-	-	-	-
	Oil & Grease	mg/L		0	-	-	-	-	-	-
	pH	pH		0	-	-	-	-	-	-
8	TSS	mg/L	Upon discharge	0	-	-	-	-	-	-
	Conductivity	ms/cm		0	-	-	-	-	-	-
	Oil & Grease	mg/L		0	-	-	-	-	-	-
	pH	pH		0	-	-	-	-	-	-



Table 2 - Pollutant Limits Apply

EPL ID	Pollutant	Units of Measure	Monitoring Frequency	No. of Samples for the Month	Date Sampled	Date Obtained	Min Value	Max or Only Value	100%ile Limit	Exceedance (Yes/No)	Comments
1	TSS	mg/L	Upon discharge	0	-	-	-	-	-	-	-
	Oil & Grease	mg/L		0	-	-	-	-	-	-	-
	pH	pH		0	-	-	-	-	-	-	-
2	TSS	mg/L	Upon discharge	0	-	-	-	-	-	-	-
	Oil & Grease	mg/L		0	-	-	-	-	-	-	-
	pH	pH		0	-	-	-	-	-	-	-
3	TSS	mg/L	Upon discharge	0	-	-	-	-	-	-	-
	Oil & Grease	mg/L		0	-	-	-	-	-	-	-
	pH	pH		0	-	-	-	-	-	-	-
24	TSS	mg/L	Upon discharge	0	-	-	-	-	-	-	-
	Oil & Grease	mg/L		0	-	-	-	-	-	-	-
	pH	pH		0	-	-	-	-	-	-	-
25	TSS	mg/L	Upon discharge	0	-	-	-	-	-	-	-
	Oil & Grease	mg/L		0	-	-	-	-	-	-	-
	pH	pH		0	-	-	-	-	-	-	-
26	TSS	mg/L	Upon discharge	0	-	-	-	-	-	-	-
	Oil & Grease	mg/L		0	-	-	-	-	-	-	-
	pH	pH		0	-	-	-	-	-	-	-
27	TSS	mg/L	Upon discharge	0	-	-	-	-	-	-	-
	Oil & Grease	mg/L		0	-	-	-	-	-	-	-
	pH	pH		0	-	-	-	-	-	-	-

Table 3 – Monitoring (Quarterly & 6 Monthly – No Limits apply)

EPL ID	Pollutant	Units of Measure	Monitoring Frequency	No. of Samples for the Period	Date Sampled	Date Obtained	Min Value	Mean Value	Median Value	Max or Only Value
9	Conductivity	ms/cm	6 monthly	0	-	-	-	-	-	-
	Lead	mg/L		0	-	-	-	-	-	-
	pH	pH		0	-	-	-	-	-	-
	Standing Water Level	metres		0	-	-	-	-	-	-
10	Conductivity	ms/cm	6 monthly	0	-	-	-	-	-	-
	Lead	mg/L		0	-	-	-	-	-	-
	pH	pH		0	-	-	-	-	-	-
	Standing Water Level	metres		0	-	-	-	-	-	-
11	Conductivity	ms/cm	6 monthly	1	17/7/2014	5/8/2014	-	-	-	2150
	Lead	mg/L		1	17/7/2014	5/8/2014	-	-	-	<0.001
	pH	pH		1	17/7/2014	5/8/2014	-	-	-	7.98
	Standing Water Level	metres		1	17/7/2014	5/8/2014	-	-	-	10.0
12	Conductivity	ms/cm	6 monthly	0	-	-	-	-	-	-
	Lead	mg/L		0	-	-	-	-	-	-
	pH	pH		0	-	-	-	-	-	-
	Standing Water Level	metres		0	-	-	-	-	-	-
13	Conductivity	ms/cm	Quarterly	0	-	-	-	-	-	-
	Oil & Grease	mg/L		0	-	-	-	-	-	-
	pH	pH		0	-	-	-	-	-	-
	TSS	mg/L		0	-	-	-	-	-	-

Table 4 – Monitoring (Noise – Limits Apply)

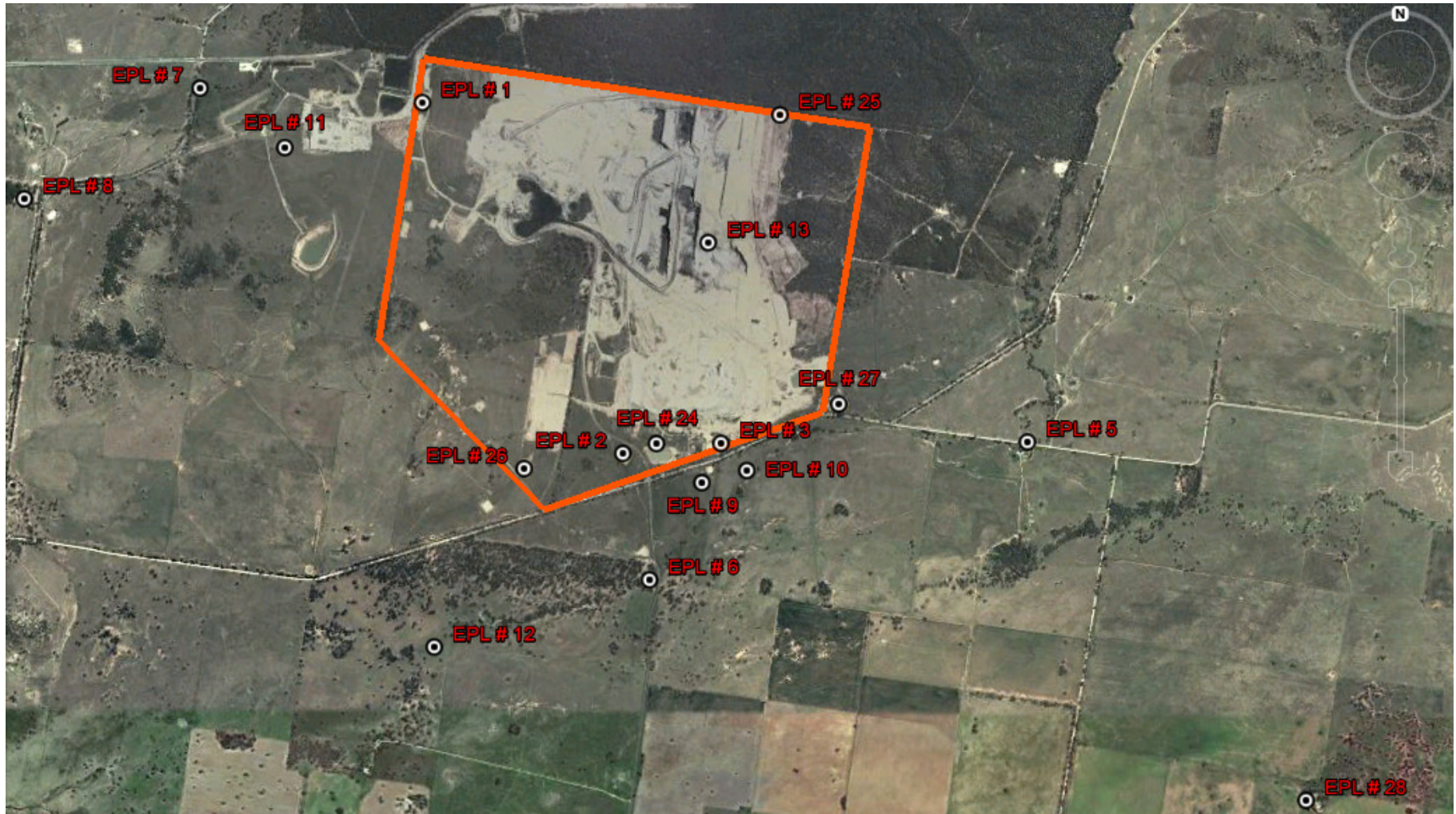
EPL ID	Date	Start Time	Measurement period	Measured Levels – dB(A)	Measured Levels – dB(A)	Measured Levels – dB(A)	Measured Levels – dB(A)	Limit	Weather	Compliant (Yes/No)	Comments
				L _{eq} 15min Day	L _{eq} 15min Evening	L _{eq} 15min Night	L _{A1} (1 min) Night				
N1	Nil		90 minutes								No monitoring this month
	Nil		30 minutes								
	Nil		60 minutes								
	Nil		60 minutes								
	Nil		90 minutes								
	Nil		30 minutes								
	Nil		60 minutes								
	Nil		60 minutes								
	Nil		90 minutes								
	Nil		30 minutes								
	Nil		60 minutes								
	Nil		60 minutes								

Note: Measured noise levels refer to noise attributable to Tarrawonga Coal Mine

Table 5 – Monitoring (Blasts – Limits Apply)

Location	Parameter	Units of Measure	Frequency	No. of Blasts for the Month	Average Value	Max Value	100%ile Limit	(Potential) Non-compliance /breach
Tarrawonga	Blast Noise	dB (Lin Peak)	Every Blast	7	101.8	114.3	120	Nil
	Blast Vibration	mm/s	Every Blast	7	0.28	0.66	10	Nil

Figure 1 – EPL 12365 Monitoring Locations



TARRAWONGA COAL MINE – MONTHLY MONITORING SUMMARY

Site Information

EPL No: 12365

EPA Website Link: <http://www.environment.nsw.gov.au/prpoeoapp/ViewPOEOLicence.aspx?DOCID=32390&SYSUID=1&LICID=12365>

Licensee: Tarrawonga Coal Pty Ltd

Licensee Address: Tarrawonga Coal Mine, 469 Goonbri Road, BOGGABRI NSW 2382

EPL Monitoring Points: See Figure 1 below

Sampling Period: August 2014

Publication Date: 18th September 2014 (republished 18th November 2014)

Table 1 - No Pollutant Limits Apply

EPL ID	Pollutant	Units of Measure	Monitoring Frequency	No. of Samples for the Month	Date Sampled	Date Obtained	Min Value	Mean Value	Median Value	Max or Only Value
5	TSS	mg/L	Upon discharge	0	-	-	-	-	-	-
	Conductivity	ms/cm		0	-	-	-	-	-	-
	Oil & Grease	mg/L		0	-	-	-	-	-	-
	pH	pH		0	-	-	-	-	-	-
6	TSS	mg/L	Upon discharge	0	-	-	-	-	-	-
	Conductivity	ms/cm		0	-	-	-	-	-	-
	Oil & Grease	mg/L		0	-	-	-	-	-	-
	pH	pH		0	-	-	-	-	-	-
7	TSS	mg/L	Upon discharge	0	-	-	-	-	-	-
	Conductivity	ms/cm		0	-	-	-	-	-	-
	Oil & Grease	mg/L		0	-	-	-	-	-	-
	pH	pH		0	-	-	-	-	-	-
8	TSS	mg/L	Upon discharge	1	27/8/14	4/9/14	839	839	839	839
	Conductivity	ms/cm		1	27/8/14	4/9/14	193	193	193	193
	Oil & Grease	mg/L		1	27/8/14	4/9/14	<5	<5	<5	<5
	pH	pH		1	27/8/14	4/9/14	7.39	7.39	7.39	7.39



Table 2 - Pollutant Limits Apply

EPL ID	Pollutant	Units of Measure	Monitoring Frequency	No. of Samples for the Month	Date Sampled	Date Obtained	Min Value	Max or Only Value	100%ile Limit	Exceedance (Yes/No)	Comments
1	TSS	mg/L	Upon discharge	0	-	-	-	-	-	-	-
	Oil & Grease	mg/L		0	-	-	-	-	-	-	-
	pH	pH		0	-	-	-	-	-	-	-
2	TSS	mg/L	Upon discharge	0	-	-	-	-	-	-	-
	Oil & Grease	mg/L		0	-	-	-	-	-	-	-
	pH	pH		0	-	-	-	-	-	-	-
3	TSS	mg/L	Upon discharge	0	-	-	-	-	-	-	-
	Oil & Grease	mg/L		0	-	-	-	-	-	-	-
	pH	pH		0	-	-	-	-	-	-	-
24	TSS	mg/L	Upon discharge	0	-	-	-	-	-	-	-
	Oil & Grease	mg/L		0	-	-	-	-	-	-	-
	pH	pH		0	-	-	-	-	-	-	-
25	TSS	mg/L	Upon discharge	0	-	-	-	-	-	-	-
	Oil & Grease	mg/L		0	-	-	-	-	-	-	-
	pH	pH		0	-	-	-	-	-	-	-
26	TSS	mg/L	Upon discharge	0	-	-	-	-	-	-	-
	Oil & Grease	mg/L		0	-	-	-	-	-	-	-
	pH	pH		0	-	-	-	-	-	-	-
27	TSS	mg/L	Upon discharge	0	-	-	-	-	-	-	-
	Oil & Grease	mg/L		0	-	-	-	-	-	-	-
	pH	pH		0	-	-	-	-	-	-	-

Table 3 – Monitoring (Quarterly & 6 Monthly – No Limits apply)

EPL ID	Pollutant	Units of Measure	Monitoring Frequency	No. of Samples for the Period	Date Sampled	Date Obtained	Min Value	Mean Value	Median Value	Max or Only Value
9	Conductivity	ms/cm	6 monthly	0	-	-	-	-	-	-
	Lead	mg/L		0	-	-	-	-	-	-
	pH	pH		0	-	-	-	-	-	-
	Standing Water Level	metres		0	-	-	-	-	-	-
10	Conductivity	ms/cm	6 monthly	0	-	-	-	-	-	-
	Lead	mg/L		0	-	-	-	-	-	-
	pH	pH		0	-	-	-	-	-	-
	Standing Water Level	metres		0	-	-	-	-	-	-
11	Conductivity	ms/cm	6 monthly	0	-	-	-	-	-	-
	Lead	mg/L		0	-	-	-	-	-	-
	pH	pH		0	-	-	-	-	-	-
	Standing Water Level	metres		0	-	-	-	-	-	-
12	Conductivity	ms/cm	6 monthly	0	-	-	-	-	-	-
	Lead	mg/L		0	-	-	-	-	-	-
	pH	pH		0	-	-	-	-	-	-
	Standing Water Level	metres		0	-	-	-	-	-	-
13	Conductivity	ms/cm	Quarterly	1	6/8/2014	13/8/2014	-	-	-	3260
	Oil & Grease	mg/L		1	6/8/2014	13/8/2014	-	-	-	<5
	pH	pH		1	6/8/2014	13/8/2014	-	-	-	8.5
	TSS	mg/L		1	6/8/2014	13/8/2014	-	-	-	515

Table 4 – Monitoring (Noise – Limits Apply)

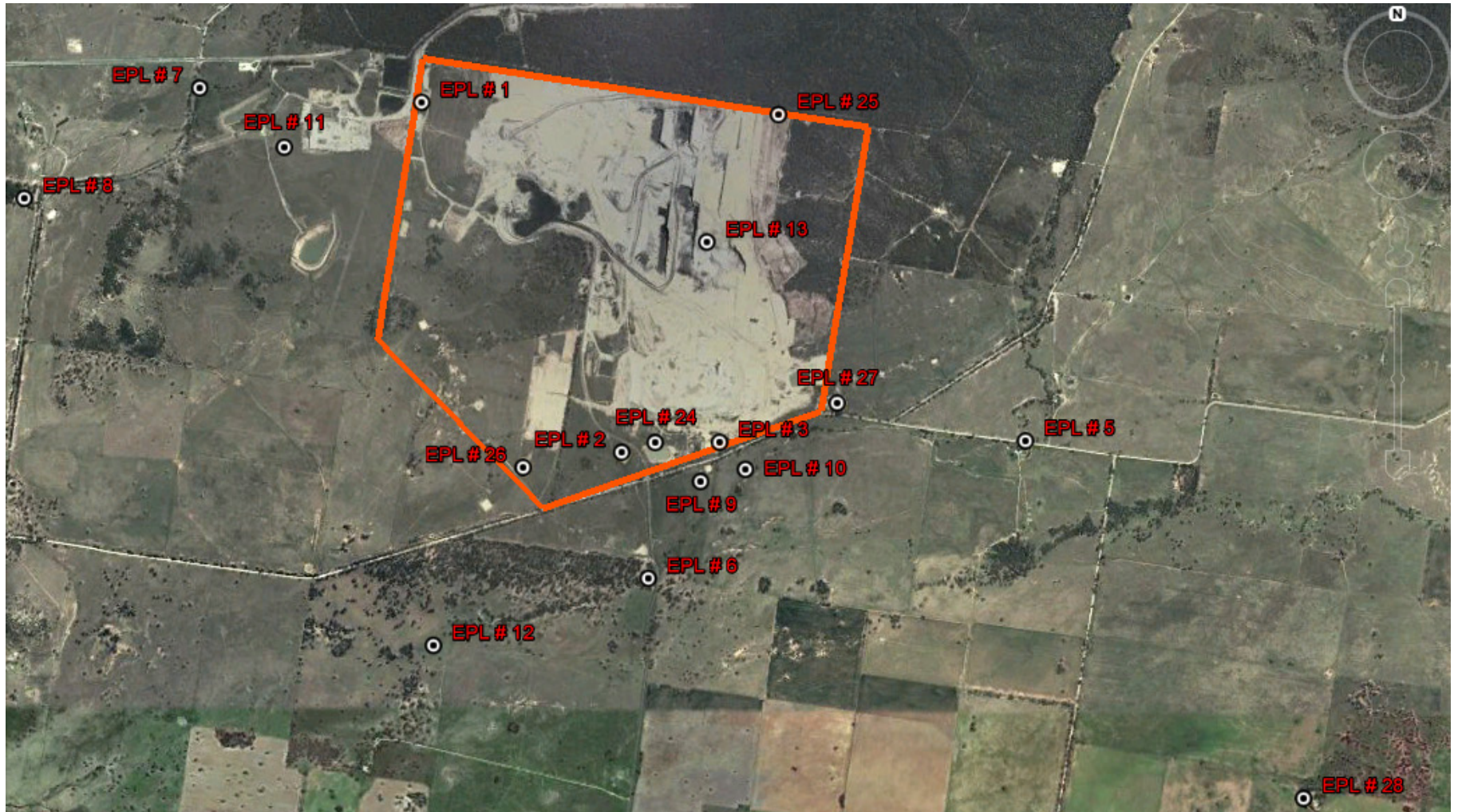
EPL ID	Date	Start Time	Measurement period	Measured Levels – dB(A)	Measured Levels – dB(A)	Measured Levels – dB(A)	Measured Levels – dB(A)	Limit	Weather	Compliant (Yes/No)	Comments
				L _{eq} 15min Day	L _{eq} 15min Evening	L _{eq} 15min Night	L _{A1} (1 min) Night				
N1	Nil		90 minutes								No monitoring this month
	Nil		30 minutes								
	Nil		60 minutes								
	Nil		60 minutes								
	Nil		90 minutes								
	Nil		30 minutes								
	Nil		60 minutes								
	Nil		60 minutes								
	Nil		90 minutes								
	Nil		30 minutes								
	Nil		60 minutes								
	Nil		60 minutes								

Note: Measured noise levels refer to noise attributable to Tarrawonga Coal Mine

Table 5 – Monitoring (Blasts – Limits Apply)

Location	Parameter	Units of Measure	Frequency	No. of Blasts for the Month	Average Value	Max Value	100%ile Limit	(Potential) Non-compliance /breach
Tarrawonga	Blast Noise	dB (Lin Peak)	Every Blast	9	96.7	105.2	120	Nil
	Blast Vibration	mm/s	Every Blast	9	0.32	0.79	10	Nil

Figure 1 – EPL 12365 Monitoring Locations



TARRAWONGA COAL MINE – MONTHLY MONITORING SUMMARY

Site Information

EPL No: 12365

EPA Website Link: <http://www.environment.nsw.gov.au/prpoeoapp/ViewPOEOLicence.aspx?DOCID=32390&SYSUID=1&LICID=12365>

Licensee: Tarrawonga Coal Pty Ltd

Licensee Address: Tarrawonga Coal Mine, 469 Goonbri Road, BOGGABRI NSW 2382

EPL Monitoring Points: See Figure 1 below

Sampling Period: September 2014

Publication Date: 24th October 2014

Table 1 - No Pollutant Limits Apply

EPL ID	Pollutant	Units of Measure	Monitoring Frequency	No. of Samples for the Month	Date Sampled	Date Obtained	Min Value	Mean Value	Median Value	Max or Only Value
5	TSS	mg/L	Upon discharge	0	-	-	-	-	-	-
	Conductivity	ms/cm		0	-	-	-	-	-	-
	Oil & Grease	mg/L		0	-	-	-	-	-	-
	pH	pH		0	-	-	-	-	-	-
6	TSS	mg/L	Upon discharge	0	-	-	-	-	-	-
	Conductivity	ms/cm		0	-	-	-	-	-	-
	Oil & Grease	mg/L		0	-	-	-	-	-	-
	pH	pH		0	-	-	-	-	-	-
7	TSS	mg/L	Upon discharge	0	-	-	-	-	-	-
	Conductivity	ms/cm		0	-	-	-	-	-	-
	Oil & Grease	mg/L		0	-	-	-	-	-	-
	pH	pH		0	-	-	-	-	-	-
8	TSS	mg/L	Upon discharge	0	-	-	-	-	-	-
	Conductivity	ms/cm		0	-	-	-	-	-	-
	Oil & Grease	mg/L		0	-	-	-	-	-	-
	pH	pH		0	-	-	-	-	-	-



Table 2 - Pollutant Limits Apply

EPL ID	Pollutant	Units of Measure	Monitoring Frequency	No. of Samples for the Month	Date Sampled	Date Obtained	Min Value	Max or Only Value	100%ile Limit	Exceedance (Yes/No)	Comments
1	TSS	mg/L	Upon discharge	0	-	-	-	-	-	-	-
	Oil & Grease	mg/L		0	-	-	-	-	-	-	-
	pH	pH		0	-	-	-	-	-	-	-
2	TSS	mg/L	Upon discharge	0	-	-	-	-	-	-	-
	Oil & Grease	mg/L		0	-	-	-	-	-	-	-
	pH	pH		0	-	-	-	-	-	-	-
3	TSS	mg/L	Upon discharge	0	-	-	-	-	-	-	-
	Oil & Grease	mg/L		0	-	-	-	-	-	-	-
	pH	pH		0	-	-	-	-	-	-	-
24	TSS	mg/L	Upon discharge	0	-	-	-	-	-	-	-
	Oil & Grease	mg/L		0	-	-	-	-	-	-	-
	pH	pH		0	-	-	-	-	-	-	-
25	TSS	mg/L	Upon discharge	0	-	-	-	-	-	-	-
	Oil & Grease	mg/L		0	-	-	-	-	-	-	-
	pH	pH		0	-	-	-	-	-	-	-
26	TSS	mg/L	Upon discharge	0	-	-	-	-	-	-	-
	Oil & Grease	mg/L		0	-	-	-	-	-	-	-
	pH	pH		0	-	-	-	-	-	-	-
27	TSS	mg/L	Upon discharge	0	-	-	-	-	-	-	-
	Oil & Grease	mg/L		0	-	-	-	-	-	-	-
	pH	pH		0	-	-	-	-	-	-	-

Table 3 – Monitoring (Quarterly & 6 Monthly – No Limits apply)

EPL ID	Pollutant	Units of Measure	Monitoring Frequency	No. of Samples for the Period	Date Sampled	Date Obtained	Min Value	Mean Value	Median Value	Max or Only Value
9	Conductivity	ms/cm	6 monthly	1	9/9/14	16/9/14	-	-	-	3320
	Lead	mg/L		1	9/9/14	16/9/14	-	-	-	0.006
	pH	pH		1	9/9/14	16/9/14	-	-	-	7.70
	Standing Water Level	metres		1	9/9/14	16/9/14	-	-	-	6.26
10	Conductivity	ms/cm	6 monthly	1	9/9/14	16/9/14	-	-	-	615
	Lead	mg/L		1	9/9/14	16/9/14	-	-	-	0.01
	pH	pH		1	9/9/14	16/9/14	-	-	-	7.27
	Standing Water Level	metres		1	9/9/14	16/9/14	-	-	-	3.50
11	Conductivity	ms/cm	6 monthly	0	-	-	-	-	-	-
	Lead	mg/L		0	-	-	-	-	-	-
	pH	pH		0	-	-	-	-	-	-
	Standing Water Level	metres		0	-	-	-	-	-	-
12	Conductivity	ms/cm	6 monthly	1	9/9/14	16/9/14	-	-	-	4170
	Lead	mg/L		1	9/9/14	16/9/14	-	-	-	0.007
	pH	pH		1	9/9/14	16/9/14	-	-	-	7.83
	Standing Water Level	metres		1	9/9/14	16/9/14	-	-	-	8.76
13	Conductivity	ms/cm	Quarterly	0	-	-	-	-	-	-
	Oil & Grease	mg/L		0	-	-	-	-	-	-
	pH	pH		0	-	-	-	-	-	-
	TSS	mg/L		0	-	-	-	-	-	-

Table 4 – Monitoring (Noise – Limits Apply)

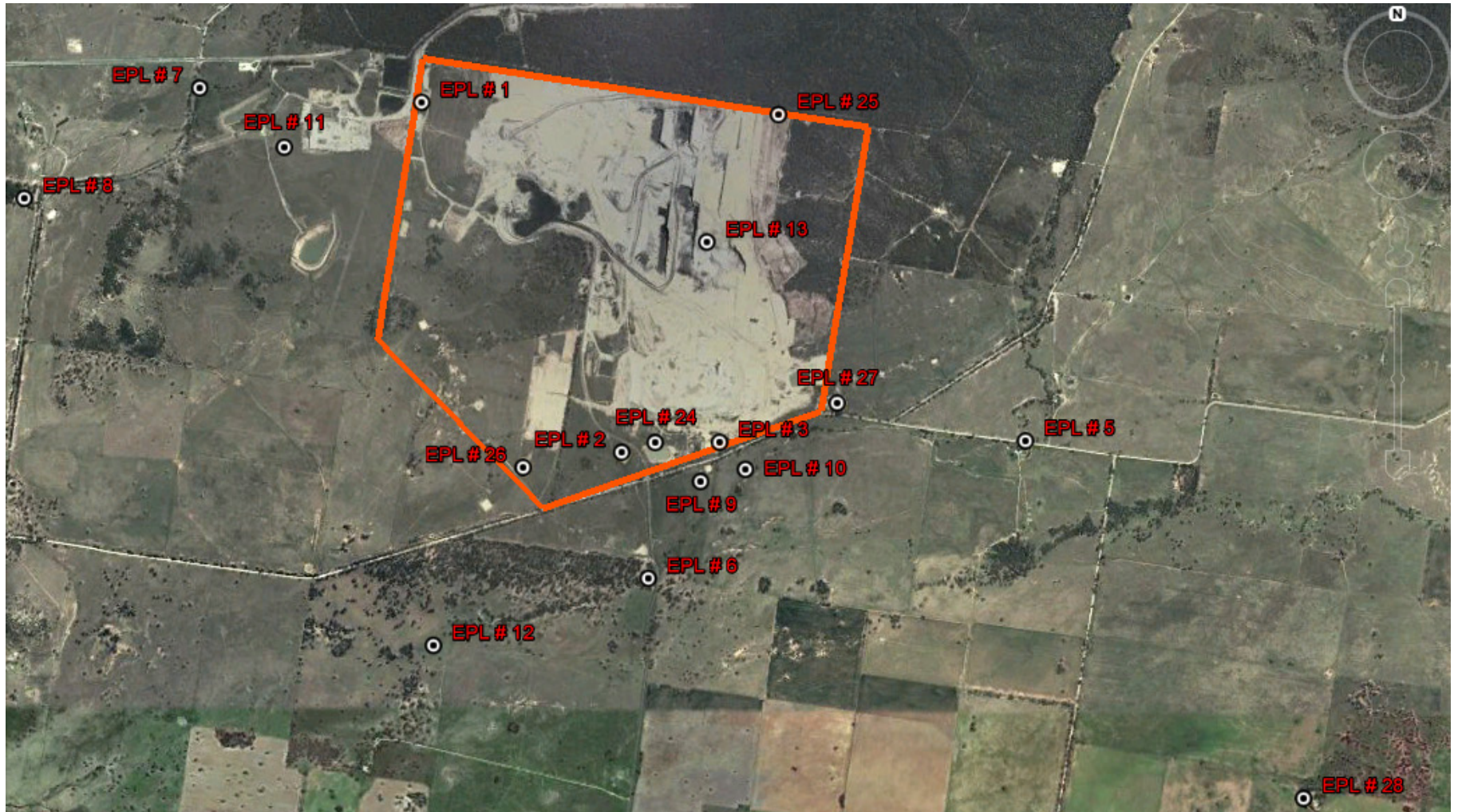
EPL ID	Date	Start Time	Measurement period	Measured Levels – dB(A)	Measured Levels – dB(A)	Measured Levels – dB(A)	Measured Levels – dB(A)	Limit	Weather	Compliant (Yes/No)	Comments
				L _{eq} 15min Day	L _{eq} 15min Evening	L _{eq} 15min Night	L _{A1} (1 min) Night				
N1	9/9/2014	15:32	90 minutes	36				35	3.8/329	No	Property project related
	9/9/2014	21:09	30 minutes		32			35	1.5/5	Yes	
	9/9/2014	22:05	60 minutes			37		35	1.5/6	No	
	9/9/2014	22:05	60 minutes				43	45	1.5/6	Yes	
	10/9/14	08:49	90 minutes	30				35	3.9/267	Yes	
	10/9/14	19:01	30 minutes		26			35	1.0/211	Yes	
	10/9/14	22:04	60 minutes			Inaudible		35	Calm	Yes	
	10/9/14	22:04	60 minutes				n/a	45	Calm	Yes	
	11/9/14	08:05	90 minutes	25				35	1.1/169	Yes	
	11/9/14	19:05	30 minutes		28			35	0.7/343	Yes	
	11/9/14	22:00	60 minutes			22		35	0.8/331	Yes	
	11/9/14	22:00	60 minutes				24	45	0.8/331	Yes	
	12/9/14	08:47	90 minutes	37				35	2.1/145	No	
	12/9/14	19:14	30 minutes		30			35	0.8/338	Yes	
	12/9/14	22:06	60 minutes			37		35	0.4/249	Yes	
12/9/14	22:06	60 minutes				44	45	0.4/249	Yes		

Note: Measured noise levels refer to noise attributable to Tarrawonga Coal Mine

Table 5 – Monitoring (Blasts – Limits Apply)

Location	Parameter	Units of Measure	Frequency	No. of Blasts for the Month	Average Value	Max Value	100%ile Limit	(Potential) Non-compliance /breach
Tarrawonga	Blast Noise	dB (Lin Peak)	Every Blast	9	101.6	119.1	120	Nil
	Blast Vibration	mm/s	Every Blast	9	0.31	0.85	10	Nil

Figure 1 – EPL 12365 Monitoring Locations



TARRAWONGA COAL MINE – MONTHLY MONITORING SUMMARY

Site Information

EPL No: 12365

EPA Website Link: <http://www.environment.nsw.gov.au/prpoeoapp/ViewPOEOLicence.aspx?DOCID=32390&SYSUID=1&LICID=12365>

Licensee: Tarrawonga Coal Pty Ltd

Licensee Address: Tarrawonga Coal Mine, 469 Goonbri Road, BOGGABRI NSW 2382

EPL Monitoring Points: See Figure 1 below

Sampling Period: October 2014

Publication Date: 26th November 2014

Table 1 - No Pollutant Limits Apply

EPL ID	Pollutant	Units of Measure	Monitoring Frequency	No. of Samples for the Month	Date Sampled	Date Obtained	Min Value	Mean Value	Median Value	Max or Only Value
5	TSS	mg/L	Upon discharge	0	-	-	-	-	-	-
	Conductivity	ms/cm		0	-	-	-	-	-	-
	Oil & Grease	mg/L		0	-	-	-	-	-	-
	pH	pH		0	-	-	-	-	-	-
6	TSS	mg/L	Upon discharge	0	-	-	-	-	-	-
	Conductivity	ms/cm		0	-	-	-	-	-	-
	Oil & Grease	mg/L		0	-	-	-	-	-	-
	pH	pH		0	-	-	-	-	-	-
7	TSS	mg/L	Upon discharge	0	-	-	-	-	-	-
	Conductivity	ms/cm		0	-	-	-	-	-	-
	Oil & Grease	mg/L		0	-	-	-	-	-	-
	pH	pH		0	-	-	-	-	-	-
8	TSS	mg/L	Upon discharge	0	-	-	-	-	-	-
	Conductivity	ms/cm		0	-	-	-	-	-	-
	Oil & Grease	mg/L		0	-	-	-	-	-	-
	pH	pH		0	-	-	-	-	-	-



Table 2 - Pollutant Limits Apply

EPL ID	Pollutant	Units of Measure	Monitoring Frequency	No. of Samples for the Month	Date Sampled	Date Obtained	Min Value	Max or Only Value	100%ile Limit	Exceedance (Yes/No)	Comments
1	TSS	mg/L	Upon discharge	0	-	-	-	-	-	-	-
	Oil & Grease	mg/L		0	-	-	-	-	-	-	-
	pH	pH		0	-	-	-	-	-	-	-
2	TSS	mg/L	Upon discharge	0	-	-	-	-	-	-	-
	Oil & Grease	mg/L		0	-	-	-	-	-	-	-
	pH	pH		0	-	-	-	-	-	-	-
3	TSS	mg/L	Upon discharge	0	-	-	-	-	-	-	-
	Oil & Grease	mg/L		0	-	-	-	-	-	-	-
	pH	pH		0	-	-	-	-	-	-	-
24	TSS	mg/L	Upon discharge	0	-	-	-	-	-	-	-
	Oil & Grease	mg/L		0	-	-	-	-	-	-	-
	pH	pH		0	-	-	-	-	-	-	-
25	TSS	mg/L	Upon discharge	0	-	-	-	-	-	-	-
	Oil & Grease	mg/L		0	-	-	-	-	-	-	-
	pH	pH		0	-	-	-	-	-	-	-
26	TSS	mg/L	Upon discharge	0	-	-	-	-	-	-	-
	Oil & Grease	mg/L		0	-	-	-	-	-	-	-
	pH	pH		0	-	-	-	-	-	-	-
27	TSS	mg/L	Upon discharge	0	-	-	-	-	-	-	-
	Oil & Grease	mg/L		0	-	-	-	-	-	-	-
	pH	pH		0	-	-	-	-	-	-	-

Table 3 – Monitoring (Quarterly & 6 Monthly – No Limits apply)

EPL ID	Pollutant	Units of Measure	Monitoring Frequency	No. of Samples for the Period	Date Sampled	Date Obtained	Min Value	Mean Value	Median Value	Max or Only Value
9	Conductivity	ms/cm	6 monthly	0	-	-	-	-	-	-
	Lead	mg/L		0	-	-	-	-	-	-
	pH	pH		0	-	-	-	-	-	-
	Standing Water Level	metres		0	-	-	-	-	-	-
10	Conductivity	ms/cm	6 monthly	0	-	-	-	-	-	-
	Lead	mg/L		0	-	-	-	-	-	-
	pH	pH		0	-	-	-	-	-	-
	Standing Water Level	metres		0	-	-	-	-	-	-
11	Conductivity	ms/cm	6 monthly	0	-	-	-	-	-	-
	Lead	mg/L		0	-	-	-	-	-	-
	pH	pH		0	-	-	-	-	-	-
	Standing Water Level	metres		0	-	-	-	-	-	-
12	Conductivity	ms/cm	6 monthly	0	-	-	-	-	-	-
	Lead	mg/L		0	-	-	-	-	-	-
	pH	pH		0	-	-	-	-	-	-
	Standing Water Level	metres		0	-	-	-	-	-	-
13	Conductivity	ms/cm	Quarterly	0	-	-	-	-	-	-
	Oil & Grease	mg/L		0	-	-	-	-	-	-
	pH	pH		0	-	-	-	-	-	-
	TSS	mg/L		0	-	-	-	-	-	-

Table 4 – Monitoring (Noise – Limits Apply)

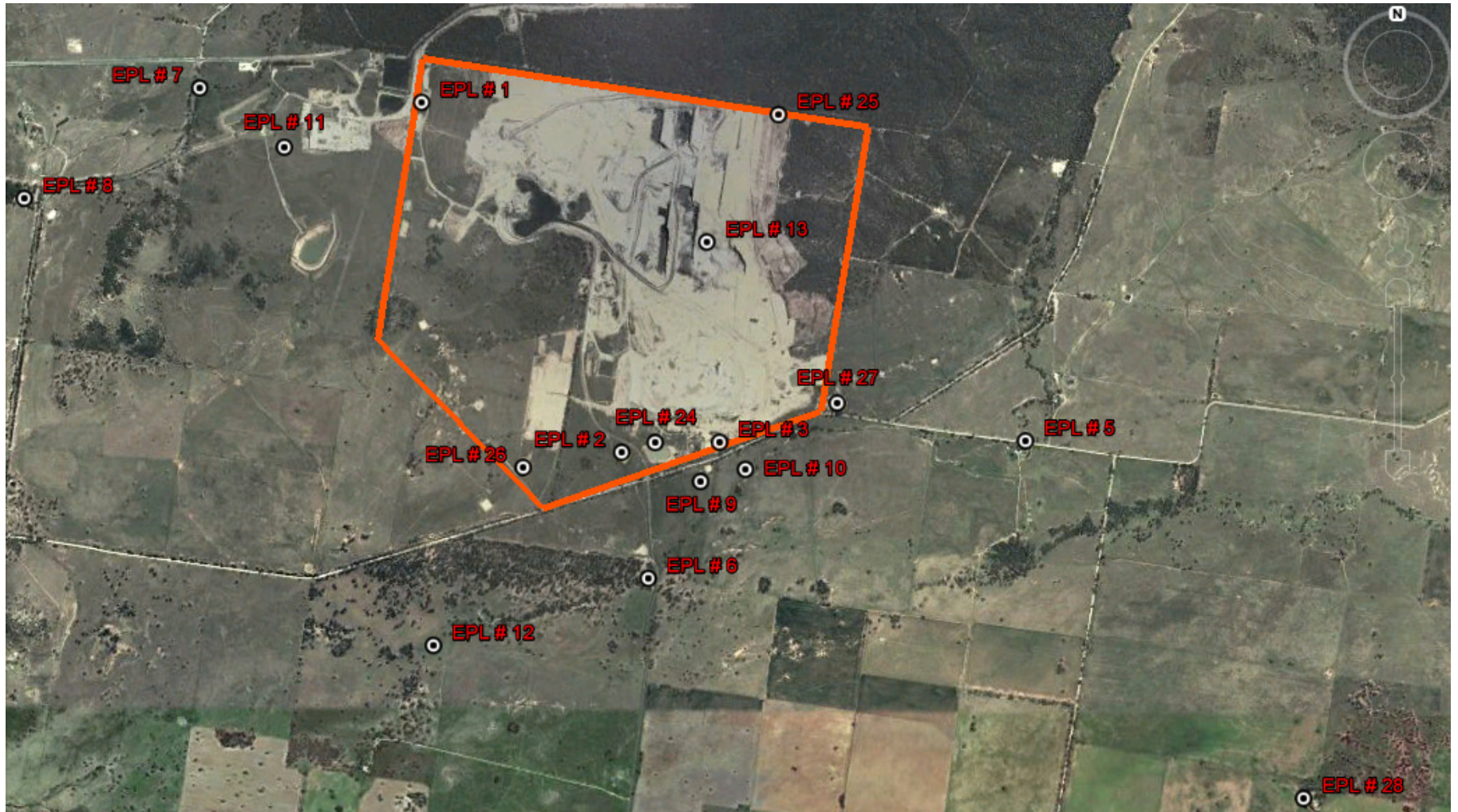
EPL ID	Date	Start Time	Measurement period	Measured Levels – dB(A)	Measured Levels – dB(A)	Measured Levels – dB(A)	Measured Levels – dB(A)	Limit	Weather	Compliant (Yes/No)	Comments
				L _{eq} 15min Day	L _{eq} 15min Evening	L _{eq} 15min Night	L _{A1} (1 min) Night				
N1	Nil		90 minutes								No monitoring this month
	Nil		30 minutes								
	Nil		60 minutes								
	Nil		60 minutes								
	Nil		90 minutes								
	Nil		30 minutes								
	Nil		60 minutes								
	Nil		60 minutes								
	Nil		90 minutes								
	Nil		30 minutes								
	Nil		60 minutes								
	Nil		60 minutes								

Note: Measured noise levels refer to noise attributable to Tarrawonga Coal Mine

Table 5 – Monitoring (Blasts – Limits Apply)

Location	Parameter	Units of Measure	Frequency	No. of Blasts for the Month	Average Value	Max Value	100%ile Limit	(Potential) Non-compliance /breach
Tarrawonga	Blast Noise	dB (Lin Peak)	Every Blast	9	97.69	108.5	120	Nil
	Blast Vibration	mm/s	Every Blast	9	0.25	0.41	5	Nil

Figure 1 – EPL 12365 Monitoring Locations



TARRAWONGA COAL MINE – MONTHLY MONITORING SUMMARY

Site Information

EPL No: 12365

EPA Website Link: <http://www.environment.nsw.gov.au/prpoeoapp/ViewPOEOLicence.aspx?DOCID=32390&SYSUID=1&LICID=12365>

Licensee: Tarrawonga Coal Pty Ltd

Licensee Address: Tarrawonga Coal Mine, 469 Goonbri Road, BOGGABRI NSW 2382

EPL Monitoring Points: See Figure 1 below

Sampling Period: November 2014

Publication Date: 29th December 2014

Table 1 - No Pollutant Limits Apply

EPL ID	Pollutant	Units of Measure	Monitoring Frequency	No. of Samples for the Month	Date Sampled	Date Obtained	Min Value	Mean Value	Median Value	Max or Only Value
5	TSS	mg/L	Upon discharge	0	-	-	-	-	-	-
	Conductivity	ms/cm		0	-	-	-	-	-	-
	Oil & Grease	mg/L		0	-	-	-	-	-	-
	pH	pH		0	-	-	-	-	-	-
6	TSS	mg/L	Upon discharge	0	-	-	-	-	-	-
	Conductivity	ms/cm		0	-	-	-	-	-	-
	Oil & Grease	mg/L		0	-	-	-	-	-	-
	pH	pH		0	-	-	-	-	-	-
7	TSS	mg/L	Upon discharge	0	-	-	-	-	-	-
	Conductivity	ms/cm		0	-	-	-	-	-	-
	Oil & Grease	mg/L		0	-	-	-	-	-	-
	pH	pH		0	-	-	-	-	-	-
8	TSS	mg/L	Upon discharge	0	-	-	-	-	-	-
	Conductivity	ms/cm		0	-	-	-	-	-	-
	Oil & Grease	mg/L		0	-	-	-	-	-	-
	pH	pH		0	-	-	-	-	-	-



Table 2 - Pollutant Limits Apply

EPL ID	Pollutant	Units of Measure	Monitoring Frequency	No. of Samples for the Month	Date Sampled	Date Obtained	Min Value	Max or Only Value	100%ile Limit	Exceedance (Yes/No)	Comments
1	TSS	mg/L	Upon discharge	0	-	-	-	-		-	-
	Oil & Grease	mg/L		0	-	-	-	-		-	-
	pH	pH		0	-	-	-	-		-	-
2	TSS	mg/L	Upon discharge	0	-	-	-	-		-	-
	Oil & Grease	mg/L		0	-	-	-	-		-	-
	pH	pH		0	-	-	-	-		-	-
3	TSS	mg/L	Upon discharge	0	-	-	-	-		-	-
	Oil & Grease	mg/L		0	-	-	-	-		-	-
	pH	pH		0	-	-	-	-		-	-
24	TSS	mg/L	Upon discharge	0	-	-	-	-		-	-
	Oil & Grease	mg/L		0	-	-	-	-		-	-
	pH	pH		0	-	-	-	-		-	-
25	TSS	mg/L	Upon discharge	0	-	-	-	-		-	-
	Oil & Grease	mg/L		0	-	-	-	-		-	-
	pH	pH		0	-	-	-	-		-	-
26	TSS	mg/L	Upon discharge	0	-	-	-	-		-	-
	Oil & Grease	mg/L		0	-	-	-	-		-	-
	pH	pH		0	-	-	-	-		-	-
27	TSS	mg/L	Upon discharge	0	-	-	-	-		-	-
	Oil & Grease	mg/L		0	-	-	-	-		-	-
	pH	pH		0	-	-	-	-		-	-

Table 3 – Monitoring (Quarterly & 6 Monthly – No Limits apply)

EPL ID	Pollutant	Units of Measure	Monitoring Frequency	No. of Samples for the Period	Date Sampled	Date Obtained	Min Value	Mean Value	Median Value	Max or Only Value
9	Conductivity	ms/cm	6 monthly	0	-	-	-	-	-	-
	Lead	mg/L		0	-	-	-	-	-	-
	pH	pH		0	-	-	-	-	-	-
	Standing Water Level	metres		0	-	-	-	-	-	-
10	Conductivity	ms/cm	6 monthly	0	-	-	-	-	-	-
	Lead	mg/L		0	-	-	-	-	-	-
	pH	pH		0	-	-	-	-	-	-
	Standing Water Level	metres		0	-	-	-	-	-	-
11	Conductivity	ms/cm	6 monthly	0	-	-	-	-	-	-
	Lead	mg/L		0	-	-	-	-	-	-
	pH	pH		0	-	-	-	-	-	-
	Standing Water Level	metres		0	-	-	-	-	-	-
12	Conductivity	ms/cm	6 monthly	0	-	-	-	-	-	-
	Lead	mg/L		0	-	-	-	-	-	-
	pH	pH		0	-	-	-	-	-	-
	Standing Water Level	metres		0	-	-	-	-	-	-
13	Conductivity	ms/cm	Quarterly	0	-	-	-	-	-	-
	Oil & Grease	mg/L		0	-	-	-	-	-	-
	pH	pH		0	-	-	-	-	-	-
	TSS	mg/L		0	-	-	-	-	-	-

Table 4 – Monitoring (Noise – Limits Apply)

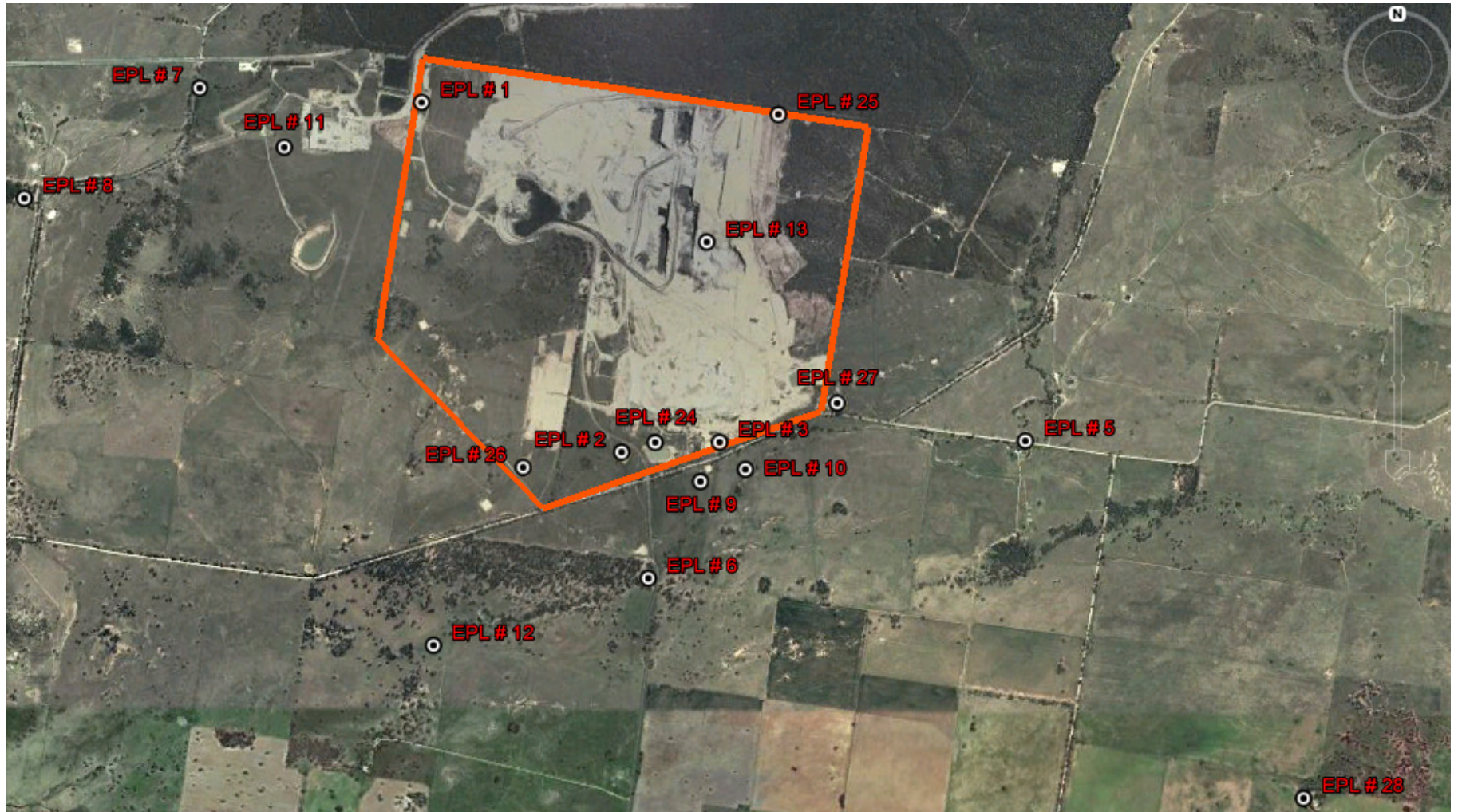
EPL ID	Date	Start Time	Measurement period	Measured Levels – dB(A)	Measured Levels – dB(A)	Measured Levels – dB(A)	Measured Levels – dB(A)	Limit	Weather	Compliant (Yes/No)	Comments
				L _{eq} 15min Day	L _{eq} 15min Evening	L _{eq} 15min Night	L _{A1} (1 min) Night				
N1	Nil		90 minutes								
	Nil		30 minutes								
	Nil		60 minutes								
	Nil		60 minutes								
	Nil		90 minutes								
	Nil		30 minutes								
	Nil		60 minutes								
	Nil		60 minutes								
	Nil		90 minutes								
	Nil		30 minutes								
	Nil		60 minutes								
	Nil		60 minutes								

Note: Measured noise levels refer to noise attributable to Tarrawonga Coal Mine

Table 5 – Monitoring (Blasts – Limits Apply)

Location	Parameter	Units of Measure	Frequency	No. of Blasts for the Month	Average Value	Max Value	100%ile Limit	(Potential) Non-compliance /breach
Tarrawonga	Blast Noise	dB (Lin Peak)	Every Blast	5	93.5	100.1	120	Nil
	Blast Vibration	mm/s	Every Blast	5	0.17	0.28	10	Nil

Figure 1 – EPL 12365 Monitoring Locations



TARRAWONGA COAL MINE – MONTHLY MONITORING SUMMARY

Site Information

EPL No: 12365

EPA Website Link: <http://www.environment.nsw.gov.au/prpoeoapp/ViewPOEOLicence.aspx?DOCID=32390&SYSUID=1&LICID=12365>

Licensee: Tarrawonga Coal Pty Ltd

Licensee Address: Tarrawonga Coal Mine, 469 Goonbri Road, BOGGABRI NSW 2382

EPL Monitoring Points: See Figure 1 below

Sampling Period: December 2014

Publication Date: 5th February 2014

Table 1 - No Pollutant Limits Apply

EPL ID	Pollutant	Units of Measure	Monitoring Frequency	No. of Samples for the Month	Date Sampled	Date Obtained	Min Value	Mean Value	Median Value	Max or Only Value
5	TSS	mg/L	Upon discharge	0	-	-	-	-	-	-
	Conductivity	ms/cm		0	-	-	-	-	-	-
	Oil & Grease	mg/L		0	-	-	-	-	-	-
	pH	pH		0	-	-	-	-	-	-
6	TSS	mg/L	Upon discharge	0	-	-	-	-	-	-
	Conductivity	ms/cm		0	-	-	-	-	-	-
	Oil & Grease	mg/L		0	-	-	-	-	-	-
	pH	pH		0	-	-	-	-	-	-
7	TSS	mg/L	Upon discharge	0	-	-	-	-	-	-
	Conductivity	ms/cm		0	-	-	-	-	-	-
	Oil & Grease	mg/L		0	-	-	-	-	-	-
	pH	pH		0	-	-	-	-	-	-
8	TSS	mg/L	Upon discharge	0	-	-	-	-	-	-
	Conductivity	ms/cm		0	-	-	-	-	-	-
	Oil & Grease	mg/L		0	-	-	-	-	-	-
	pH	pH		0	-	-	-	-	-	-



Table 2 - Pollutant Limits Apply

EPL ID	Pollutant	Units of Measure	Monitoring Frequency	No. of Samples for the Month	Date Sampled	Date Obtained	Min Value	Max or Only Value	100%ile Limit	Exceedance (Yes/No)	Comments
1	TSS	mg/L	Upon discharge	0	-	-	-	-	-	-	-
	Oil & Grease	mg/L		0	-	-	-	-	-	-	-
	pH	pH		0	-	-	-	-	-	-	-
2	TSS	mg/L	Upon discharge	0	-	-	-	-	-	-	-
	Oil & Grease	mg/L		0	-	-	-	-	-	-	-
	pH	pH		0	-	-	-	-	-	-	-
3	TSS	mg/L	Upon discharge	0	-	-	-	-	-	-	-
	Oil & Grease	mg/L		0	-	-	-	-	-	-	-
	pH	pH		0	-	-	-	-	-	-	-
24	TSS	mg/L	Upon discharge	0	-	-	-	-	-	-	-
	Oil & Grease	mg/L		0	-	-	-	-	-	-	-
	pH	pH		0	-	-	-	-	-	-	-
25	TSS	mg/L	Upon discharge	0	-	-	-	-	-	-	-
	Oil & Grease	mg/L		0	-	-	-	-	-	-	-
	pH	pH		0	-	-	-	-	-	-	-
26	TSS	mg/L	Upon discharge	0	-	-	-	-	-	-	-
	Oil & Grease	mg/L		0	-	-	-	-	-	-	-
	pH	pH		0	-	-	-	-	-	-	-
27	TSS	mg/L	Upon discharge	0	-	-	-	-	-	-	-
	Oil & Grease	mg/L		0	-	-	-	-	-	-	-
	pH	pH		0	-	-	-	-	-	-	-



Table 3 – Monitoring (Quarterly & 6 Monthly – No Limits apply)

EPL ID	Pollutant	Units of Measure	Monitoring Frequency	No. of Samples for the Period	Date Sampled	Date Obtained	Min Value	Mean Value	Median Value	Max or Only Value
9	Conductivity	ms/cm	6 monthly	0	-	-	-	-	-	-
	Lead	mg/L		0	-	-	-	-	-	-
	pH	pH		0	-	-	-	-	-	-
	Standing Water Level	metres		0	-	-	-	-	-	-
10	Conductivity	ms/cm	6 monthly	0	-	-	-	-	-	-
	Lead	mg/L		0	-	-	-	-	-	-
	pH	pH		0	-	-	-	-	-	-
	Standing Water Level	metres		0	-	-	-	-	-	-
11	Conductivity	ms/cm	6 monthly	0	-	-	-	-	-	-
	Lead	mg/L		0	-	-	-	-	-	-
	pH	pH		0	-	-	-	-	-	-
	Standing Water Level	metres		0	-	-	-	-	-	-
12	Conductivity	ms/cm	6 monthly	0	-	-	-	-	-	-
	Lead	mg/L		0	-	-	-	-	-	-
	pH	pH		0	-	-	-	-	-	-
	Standing Water Level	metres		0	-	-	-	-	-	-
13	Conductivity	ms/cm	Quarterly	1	8/12/14	15/12/14	-	-	-	3060
	Oil & Grease	mg/L		1	8/12/14	15/12/14	-	-	-	<5
	pH	pH		1	8/12/14	15/12/14	-	-	-	8.04
	TSS	mg/L		1	8/12/14	15/12/14	-	-	-	170

Table 4 – Monitoring (Noise – Limits Apply)

EPL ID	Date	Start Time	Measurement period	Measured Levels – dB(A)	Measured Levels – dB(A)	Measured Levels – dB(A)	Measured Levels – dB(A)	Limit	Weather	Compliant (Yes/No)	Comments
				L _{eq} 15min Day	L _{eq} 15min Evening	L _{eq} 15min Night	L _{A1} (1 min) Night				
N1	9/12/14	2.55pm	90min	26				35	7.1/131	Yes	Project related property
	9/12/14	9.10pm	30min		35			35	2.3/126	Yes	
	10/12/14	1.29am	60min			40		35	3.4/58	No	
	10/12/14	1.29am	60min				43	45	3.4/58	Yes	
	10/12/14	12.14pm	90min	27				35	1.8/221	Yes	
	10/12/14	9.16pm	30min		33			35	3.8/142	Yes	
	11/12/14	5.45am	60min			Inaudible		35	6.4/23	Yes	
	11/12/14	5.45am	60min				n/a	45	6.4/23	Yes	
	11/12/14	12.27pm	90min	30				35	2.0/233	Yes	
	11/12/14	9.13pm	30min		Inaudible			35	7.8/151	Yes	
	12/12/14	1.28am	60min			Inaudible		35	5.9/160	Yes	
	12/9/14	1.28am	60min				n/a	45	5.9/160	Yes	
	12/12/14	8.40am	90min	Inaudible				35	7.8/159	Yes	
	12/12/14	9.26pm	30min		Inaudible			35	6.0/125	Yes	
	12/12/14	10.04pm	60min			Inaudible		35	7.2/129	Yes	
12/12/14	10.04pm	60min				Inaudible	45	7.2/129	Yes		

Note: Measured noise levels refer to noise attributable to Tarrawonga Coal Mine

Table 5 – Monitoring (Blasts – Limits Apply)

Location	Parameter	Units of Measure	Frequency	No. of Blasts for the Month	Average Value	Max Value	100%ile Limit	(Potential) Non-compliance /breach
Tarrawonga	Blast Noise	dB (Lin Peak)	Every Blast	5	107.2	111.7		Nil
	Blast Vibration	mm/s	Every Blast	5	0.38	0.58		Nil

Figure 1 – EPL 12365 Monitoring Locations

