

## SUNNYSIDE COAL MINE – MONTHLY MONITORING SUMMARY

### Site Information

**EPL No:** 12957

**EPA Website Link:** <http://epa.nsw.gov.au/prpoeoapp/ViewPOEOLicence.aspx?DOCID=40292&SYSUID=1&LICID=12957>

**Licensee:** Namoi Mining Pty Ltd

**Licensee Address:** Sunnyside Coal Project, 259 Coocooboona Lane, GUNNEDAH NSW 2380

**EPL Monitoring Points:** See Figure 1 below

**Sampling Period:** January 2022

**Obtained Date:** 15<sup>th</sup> February 2022

**Publication Date:** 17<sup>th</sup> February 2022

**Table 1 - No Pollutant Limits Apply**

EPL ID	Pollutant	Units of Measure	Monitoring Frequency	No. of Samples for the Month	Date(s) Sampled	Date(s) Obtained	Min Value	Mean Value	Median Value	Max or Only Value
1	Particulates-Deposited Matter (SD1)	g/m <sup>2</sup> /month	Continuous	1	17/01/2022	27/01/2022	-	-	-	0.9
2	Particulates-Deposited Matter (SD3)	g/m <sup>2</sup> /month	Continuous	1	17/01/2022	27/01/2022	-	-	-	0.7
4	Particulates-Deposited Matter (SD5)	g/m <sup>2</sup> /month	Continuous	1	17/01/2022	27/01/2022	-	-	-	2.3
5	Particulates-Deposited Matter (SD6)	g/m <sup>2</sup> /month	Continuous	1	17/01/2022	27/01/2022	-	-	-	0.9
6	Particulates-Deposited Matter (SD7)	g/m <sup>2</sup> /month	Continuous	1	17/01/2022	27/01/2022	-	-	-	1.4
7	PM <sub>10</sub>	µg/m <sup>3</sup>	Every 6 days	5	Various	15/02/2022	0.05	3.15	2.3	8.4
9	Conductivity	µS/cm	Special Frequency 1*	-	-	-	-	-	-	-
	Total organic carbon	mg/L		-	-	-	-	-	-	-
10	Conductivity	µS/cm		-	-	-	-	-	-	-

## SUNNYSIDE COAL MINE – MONTHLY MONITORING SUMMARY

EPL ID	Pollutant	Units of Measure	Monitoring Frequency	No. of Samples for the Month	Date(s) Sampled	Date(s) Obtained	Min Value	Mean Value	Median Value	Max or Only Value
	Total organic carbon	mg/L	Special Frequency 1*				-	-	-	-
11	TSS	mg/L	Special Frequency 2**	-	-	-	-	-	-	-
	Conductivity	µS/cm					-	-	-	-
	Oil & Grease	mg/L					-	-	-	-
	pH	pH					-	-	-	-
	Total organic carbon	mg/L					-	-	-	-
12	TSS	mg/L	Special Frequency 2**	-	-	-	-	-	-	-
	Conductivity	µS/cm					-	-	-	-
	Oil & Grease	mg/L					-	-	-	-
	pH	pH					-	-	-	-
	Total organic carbon	mg/L					-	-	-	-

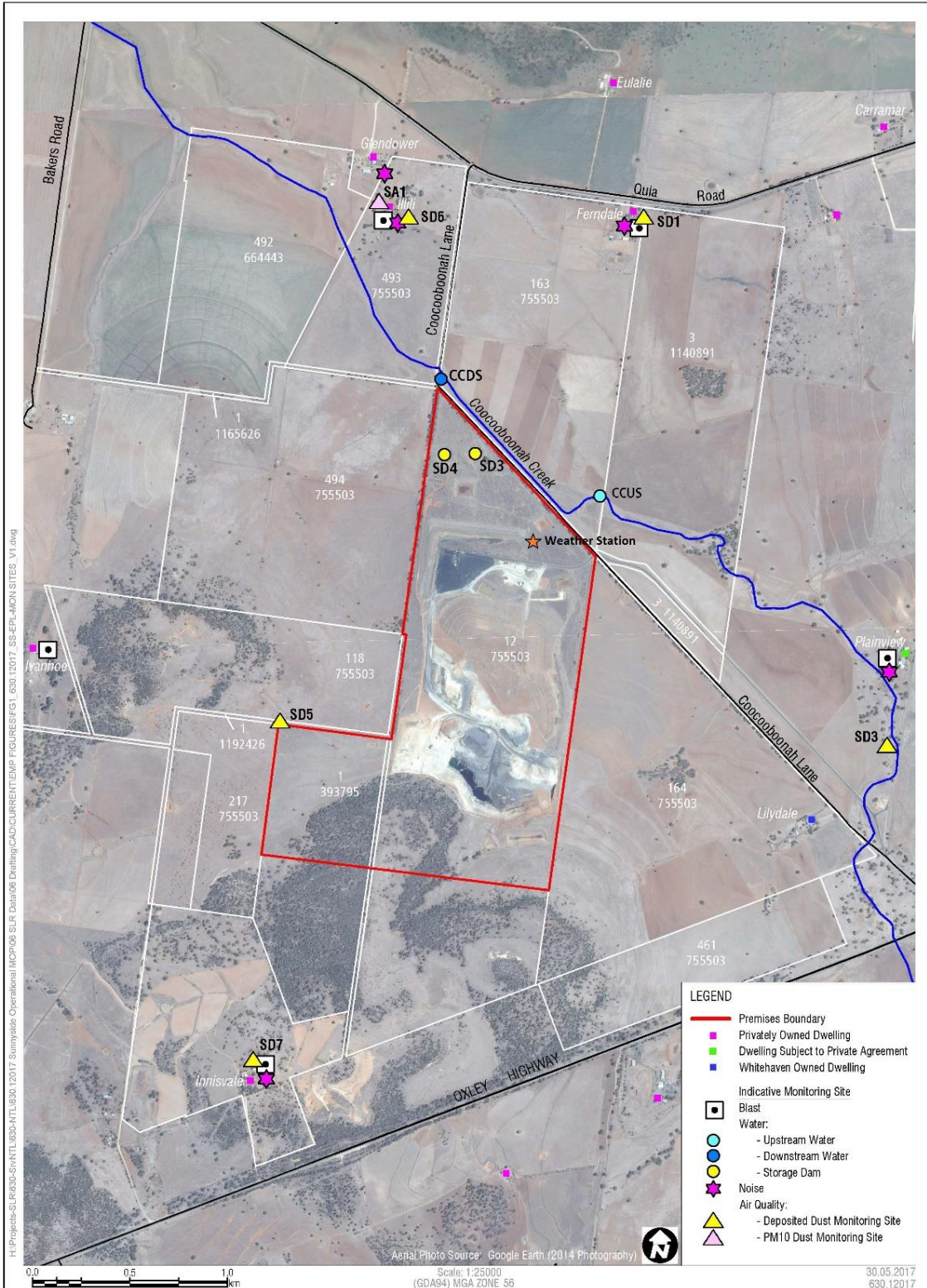
**Table 2 - Pollutant Limits Apply**

EPL ID	Pollutant	Units of Measure	Monitoring Frequency	No. of Samples for the Month	Date Sampled	Date Obtained	Min Value	Max Value	100%ile Limit	Exceedance (Yes/No)	Comments
9	TSS	mg/L	Special Frequency 1*	0	-	-	-	-	50	-	No discharge
	Oil & Grease	mg/L		0			-	-	10	-	No discharge
	pH	pH		0			-	-	6.5-8.5	-	No discharge
10	TSS	mg/L	Special Frequency 1*	0	-	-	-	-	50	-	No discharge
	Oil & Grease	mg/L		0			-	-	10	-	No discharge
	pH	pH		0			-	-	6.5-8.5	-	No discharge

\* Special Frequency 1 means the collection of samples as soon as practicable after each discharge commences and in any case not more than 12 hours after each discharge commences.

\*\* Special Frequency 2 means collection of samples quarterly (in the event of flow during the quarter) at a time when there is flow and as soon as practicable after each wet weather discharge from points 9 and 10 commences and in any case not more than 12 hours after each discharge commences.

Figure 1 – EPL 12957 Monitoring Locations



## SUNNYSIDE COAL MINE – MONTHLY MONITORING SUMMARY

### Site Information

**EPL No:** 12957

**EPA Website Link:** <http://epa.nsw.gov.au/prpoeoapp/ViewPOEOLicence.aspx?DOCID=40292&SYSUID=1&LICID=12957>

**Licensee:** Namoi Mining Pty Ltd

**Licensee Address:** Sunnyside Coal Project, 259 Coocooboona Lane, GUNNEDAH NSW 2380

**EPL Monitoring Points:** See Figure 1 below

**Sampling Period:** February 2022

**Obtained Date:** 17<sup>th</sup> March 2022

**Publication Date:** 21<sup>st</sup> March 2022

**Table 1 - No Pollutant Limits Apply**

EPL ID	Pollutant	Units of Measure	Monitoring Frequency	No. of Samples for the Month	Date(s) Sampled	Date(s) Obtained	Min Value	Mean Value	Median Value	Max or Only Value
1	Particulates-Deposited Matter (SD1)	g/m <sup>2</sup> /month	Continuous	1	17/02/2022	24/02/2022	-	-	-	0.43
2	Particulates-Deposited Matter (SD3)	g/m <sup>2</sup> /month	Continuous	1	17/02/2022	24/02/2022	-	-	-	1.31
4	Particulates-Deposited Matter (SD5)	g/m <sup>2</sup> /month	Continuous	1	17/02/2022	24/02/2022	-	-	-	0.53
5	Particulates-Deposited Matter (SD6)	g/m <sup>2</sup> /month	Continuous	1	17/02/2022	24/02/2022	-	-	-	0.3
6	Particulates-Deposited Matter (SD7)	g/m <sup>2</sup> /month	Continuous	1	17/02/2022	24/02/2022	-	-	-	0.43
7	PM <sub>10</sub>	µg/m <sup>3</sup>	Every 6 days	5	Various	17/03/2022	2.7	5.5	5.2	8.1
9	Conductivity	µS/cm	Special Frequency 1*	-	-	-	-	-	-	-
	Total organic carbon	mg/L		-	-	-	-	-	-	-
10	Conductivity	µS/cm		-	-	-	-	-	-	-

## SUNNYSIDE COAL MINE – MONTHLY MONITORING SUMMARY

EPL ID	Pollutant	Units of Measure	Monitoring Frequency	No. of Samples for the Month	Date(s) Sampled	Date(s) Obtained	Min Value	Mean Value	Median Value	Max or Only Value
	Total organic carbon	mg/L	Special Frequency 1*				-	-	-	-
11	TSS	mg/L	Special Frequency 2**	-	-	-	-	-	-	-
	Conductivity	µS/cm					-	-	-	-
	Oil & Grease	mg/L					-	-	-	-
	pH	pH					-	-	-	-
	Total organic carbon	mg/L					-	-	-	-
12	TSS	mg/L	Special Frequency 2**	-	-	-	-	-	-	-
	Conductivity	µS/cm					-	-	-	-
	Oil & Grease	mg/L					-	-	-	-
	pH	pH					-	-	-	-
	Total organic carbon	mg/L					-	-	-	-

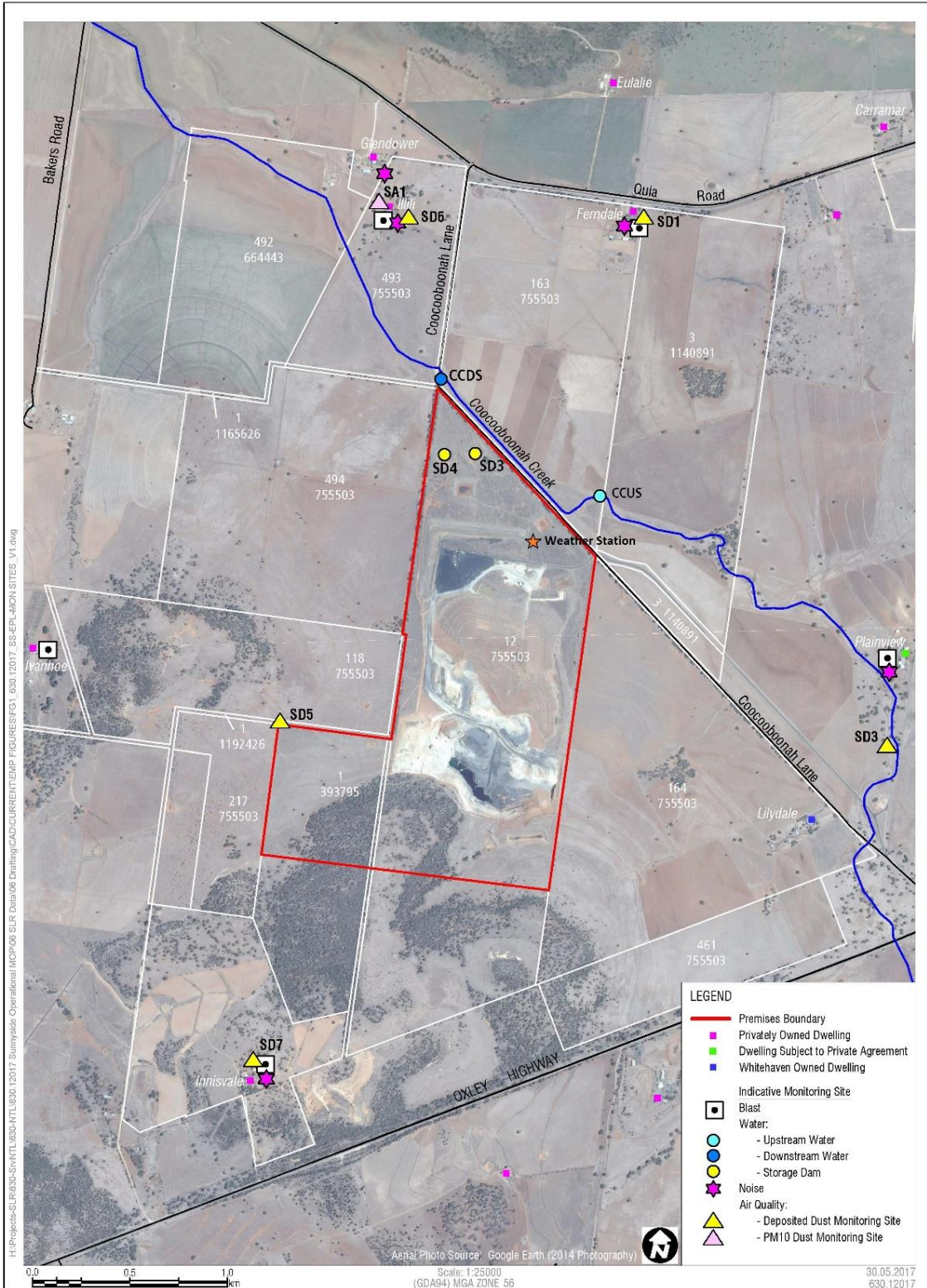
**Table 2 - Pollutant Limits Apply**

EPL ID	Pollutant	Units of Measure	Monitoring Frequency	No. of Samples for the Month	Date Sampled	Date Obtained	Min Value	Max Value	100%ile Limit	Exceedance (Yes/No)	Comments
9	TSS	mg/L	Special Frequency 1*	0	-	-	-	-	50	-	No discharge
	Oil & Grease	mg/L		0			-	-	10	-	No discharge
	pH	pH		0			-	-	6.5-8.5	-	No discharge
10	TSS	mg/L	Special Frequency 1*	0	-	-	-	-	50	-	No discharge
	Oil & Grease	mg/L		0			-	-	10	-	No discharge
	pH	pH		0			-	-	6.5-8.5	-	No discharge

\* Special Frequency 1 means the collection of samples as soon as practicable after each discharge commences and in any case not more than 12 hours after each discharge commences.

\*\* Special Frequency 2 means collection of samples quarterly (in the event of flow during the quarter) at a time when there is flow and as soon as practicable after each wet weather discharge from points 9 and 10 commences and in any case not more than 12 hours after each discharge commences.

Figure 1 – EPL 12957 Monitoring Locations



## SUNNYSIDE COAL MINE – MONTHLY MONITORING SUMMARY

### Site Information

**EPL No:** 12957

**EPA Website Link:** <http://epa.nsw.gov.au/prpoeoapp/ViewPOEOLicence.aspx?DOCID=40292&SYSUID=1&LICID=12957>

**Licensee:** Namoi Mining Pty Ltd

**Licensee Address:** Sunnyside Coal Project, 259 Coocooboona Lane, GUNNEDAH NSW 2380

**EPL Monitoring Points:** See Figure 1 below

**Sampling Period:** March 2022

**Obtained Date:** 20 April 2022

**Publication Date:** 20 April 2022

EPL ID	Pollutant	Units of Measure	Monitoring Frequency	No. of Samples for the Month	Date(s) Sampled	Date(s) Obtained	Min Value	Mean Value	Median Value	Max or Only Value
1	Particulates-Deposited Matter (SD1)	g/m <sup>2</sup> /month	Continuous	1	21/03/2022	8/04/2022	-	-	-	4.05
2	Particulates-Deposited Matter (SD3)	g/m <sup>2</sup> /month	Continuous	1	21/03/2022	8/04/2022	-	-	-	0.46
4	Particulates-Deposited Matter (SD5)	g/m <sup>2</sup> /month	Continuous	1	21/03/2022	8/04/2022	-	-	-	1.17
5	Particulates-Deposited Matter (SD6)	g/m <sup>2</sup> /month	Continuous	1	21/03/2022	8/04/2022	-	-	-	0.93
6	Particulates-Deposited Matter (SD7)	g/m <sup>2</sup> /month	Continuous	1	21/03/2022	8/04/2022	-	-	-	1.07
7	PM <sub>10</sub>	µg/m <sup>3</sup>	Every 6 days	5	Various	14/04/2022	3	7.1	6.6	12.7
11	TSS	mg/L	Special Frequency 2** (Quarterly Sampling)	-	-	-	-	-	-	-
	Conductivity	µS/cm					-	-	-	-
	Oil & Grease	mg/L					-	-	-	-
	pH	pH					-	-	-	-



## SUNNYSIDE COAL MINE – MONTHLY MONITORING SUMMARY

EPL ID	Pollutant	Units of Measure	Monitoring Frequency	No. of Samples for the Month	Date(s) Sampled	Date(s) Obtained	Min Value	Mean Value	Median Value	Max or Only Value
	Total organic carbon	mg/L					-	-	-	-
12	TSS	mg/L	Special Frequency 2** (Quarterly Sampling)	1	28/03/2022	20/04/2022	-	-	-	736
	Conductivity	µS /cm					-	-	-	190
	Oil & Grease	mg/L					-	-	-	<5
	pH	pH					-	-	-	7.3
	Total organic carbon	mg/L					-	-	-	23

EPL ID	Pollutant	Units of Measure	Monitoring Frequency	No. of Samples for the Month	Date Sampled	Date Obtained	Min Value	Max Value	100%ile Limit	Exceedance (Yes/No)	Comments
9	TSS	mg/L	Special Frequency 1*	0	-	-	-	-	50	-	No discharge
	Conductivity	µS /cm		0			-	-	-	-	No discharge
	Oil & Grease	mg/L		0			-	-	10	-	No discharge
	pH	pH		0			-	-	6.5-8.5	-	No discharge
	Total organic carbon	mg/L		0			-	-	-	-	No discharge
10	TSS	mg/L	Special Frequency 1*	0	-	-	-	-	50	-	No discharge
	Conductivity	µS /cm		0			-	-	-	-	No discharge
	Oil & Grease	mg/L		0			-	-	10	-	No discharge
	pH	pH		0			-	-	6.5-8.5	-	No discharge
	Total organic carbon	mg/L		0			-	-	-	-	No discharge
9	TSS <sup>1</sup>	mg/L	Special Frequency 2**	0	-	-	-	-	50	-	No discharge
	Conductivity	µS /cm		0			-	-	-	-	No discharge
	Oil & Grease	mg/L		0			-	-	10	-	No discharge
	pH	pH		0			-	-	6.5-8.5	-	No discharge



**SUNNYSIDE COAL MINE – MONTHLY MONITORING SUMMARY**

	Total organic carbon	mg/L		0			-	-	-	-	No discharge
10	TSS <sup>1</sup>	mg/L	Special Frequency 2**	0	-	-	-	-	50	-	No discharge
	Conductivity	µS /cm		0			-	-	-	-	No discharge
	Oil & Grease	mg/L		0			-	-	10	-	No discharge
	pH	pH		0			-	-	6.5-8.5	-	No discharge
	Total organic carbon	mg/L		0			-	-	-	-	No discharge

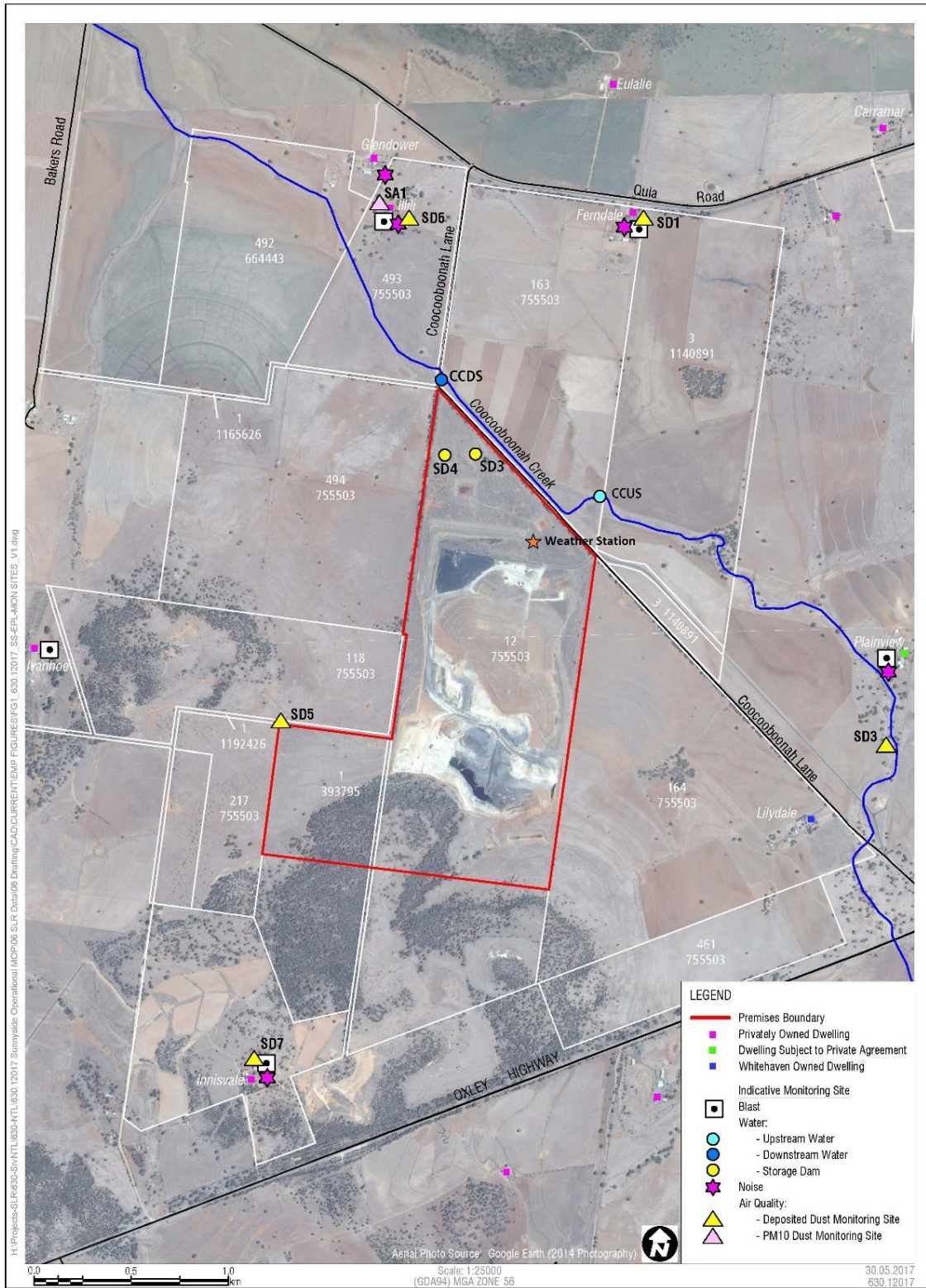
<sup>1</sup>The Total Suspended Solids concentration limits specified for Points 9 and 10 may be exceeded for water discharged provided that:

- (a) the discharge occurs solely as a result of rainfall measured at the premises that exceeds 38.4 millimetres over any consecutive 5 day period immediately prior to the discharge occurring; and
- (b) all practical measures have been implemented to dewater all sediment dams within 5 days of rainfall such that they have sufficient capacity to store run off from a 38.4 millimetre, 5 day rainfall event.

\* Special Frequency 1 means the collection of samples as soon as practicable after each discharge commences and, in any case, not more than 12 hours after each discharge commences.

\*\* Special Frequency 2 means collection of samples quarterly (in the event of flow during the quarter) at a time when there is flow and as soon as practicable after each wet weather discharge from points 9 and 10 commences and in any case not more than 12 hours after each discharge commences.

Figure 1 – EPL 12957 Monitoring Locations





## SUNNYSIDE COAL MINE – MONTHLY MONITORING SUMMARY

### Site Information

**EPL No:** 12957

**EPA Website Link:** <http://epa.nsw.gov.au/prpoeoapp/ViewPOEOLicence.aspx?DOCID=40292&SYSUID=1&LICID=12957>

**Licensee:** Namoi Mining Pty Ltd

**Licensee Address:** Sunnyside Coal Project, 259 Coocooboona Lane, GUNNEDAH NSW 2380

**EPL Monitoring Points:** See Figure 1 below

**Sampling Period:** April 2022

**Obtained Date:** 16<sup>th</sup> May 2022

**Publication Date:** 18<sup>th</sup> May 2022

EPL ID	Pollutant	Units of Measure	Monitoring Frequency	No. of Samples for the Month	Date(s) Sampled	Date(s) Obtained	Min Value	Mean Value	Median Value	Max or Only Value
1	Particulates-Deposited Matter (SD1)	g/m <sup>2</sup> /month	Continuous	1	21/04/2022	16/05/2022	-	-	-	9.1
2	Particulates-Deposited Matter (SD3)	g/m <sup>2</sup> /month	Continuous	1	21/04/2022	16/05/2022	-	-	-	0.36
4	Particulates-Deposited Matter (SD5)	g/m <sup>2</sup> /month	Continuous	1	21/04/2022	16/05/2022	-	-	-	1.35
5	Particulates-Deposited Matter (SD6)	g/m <sup>2</sup> /month	Continuous	1	21/04/2022	16/05/2022	-	-	-	0.27
6	Particulates-Deposited Matter (SD7)	g/m <sup>2</sup> /month	Continuous	1	21/04/2022	16/05/2022	-	-	-	0.25
7	PM <sub>10</sub>	µg/m <sup>3</sup>	Every 6 days	5	4/04/2022, 10/04/2022, 16/04/2022, 22/04/2022, 28/04/2022	11/05/2022	1.5	2.5	2.3	3.4
11	TSS	mg/L		-			-	-	-	-



## SUNNYSIDE COAL MINE – MONTHLY MONITORING SUMMARY

EPL ID	Pollutant	Units of Measure	Monitoring Frequency	No. of Samples for the Month	Date(s) Sampled	Date(s) Obtained	Min Value	Mean Value	Median Value	Max or Only Value
	Conductivity	µS/cm	Special Frequency 2** (Quarterly Sampling)		-	-	-	-	-	-
	Oil & Grease	mg/L					-	-	-	-
	pH	pH					-	-	-	-
	Total organic carbon	mg/L					-	-	-	-
12	TSS	mg/L	Special Frequency 2** (Quarterly Sampling)	-	-	-	-	-	-	-
	Conductivity	µS /cm					-	-	-	-
	Oil & Grease	mg/L					-	-	-	-
	pH	pH					-	-	-	-
	Total organic carbon	mg/L					-	-	-	-

EPL ID	Pollutant	Units of Measure	Monitoring Frequency	No. of Samples for the Month	Date Sampled	Date Obtained	Min Value	Max Value	100%ile Limit	Exceedance (Yes/No)	Comments
9	TSS	mg/L	Special Frequency 1*	0	-	-	-	-	50	-	No discharge
	Conductivity	µS /cm		0			-	-	-	-	No discharge
	Oil & Grease	mg/L		0			-	-	10	-	No discharge
	pH	pH		0			-	-	6.5-8.5	-	No discharge
	Total organic carbon	mg/L		0			-	-	-	-	No discharge
10	TSS	mg/L	Special Frequency 1*	0	-	-	-	-	50	-	No discharge
	Conductivity	µS /cm		0			-	-	-	-	No discharge
	Oil & Grease	mg/L		0			-	-	10	-	No discharge
	pH	pH		0			-	-	6.5-8.5	-	No discharge
	Total organic carbon	mg/L		0			-	-	-	-	No discharge
9	TSS <sup>1</sup>	mg/L		0			-	-	50	-	No discharge
	Conductivity	µS /cm		0			-	-	-	-	No discharge

## SUNNYSIDE COAL MINE – MONTHLY MONITORING SUMMARY

	Oil & Grease	mg/L	Special Frequency 2**	0	-	-	-	-	10	-	No discharge
	pH	pH		0	-	-	-	-	6.5-8.5	-	No discharge
	Total organic carbon	mg/L		0	-	-	-	-	-	-	No discharge
10	TSS <sup>1</sup>	mg/L	Special Frequency 2**	0	-	-	-	-	50	-	No discharge
	Conductivity	µS /cm		0	-	-	-	-	-	-	No discharge
	Oil & Grease	mg/L		0	-	-	-	-	10	-	No discharge
	pH	pH		0	-	-	-	-	6.5-8.5	-	No discharge
	Total organic carbon	mg/L		0	-	-	-	-	-	-	No discharge

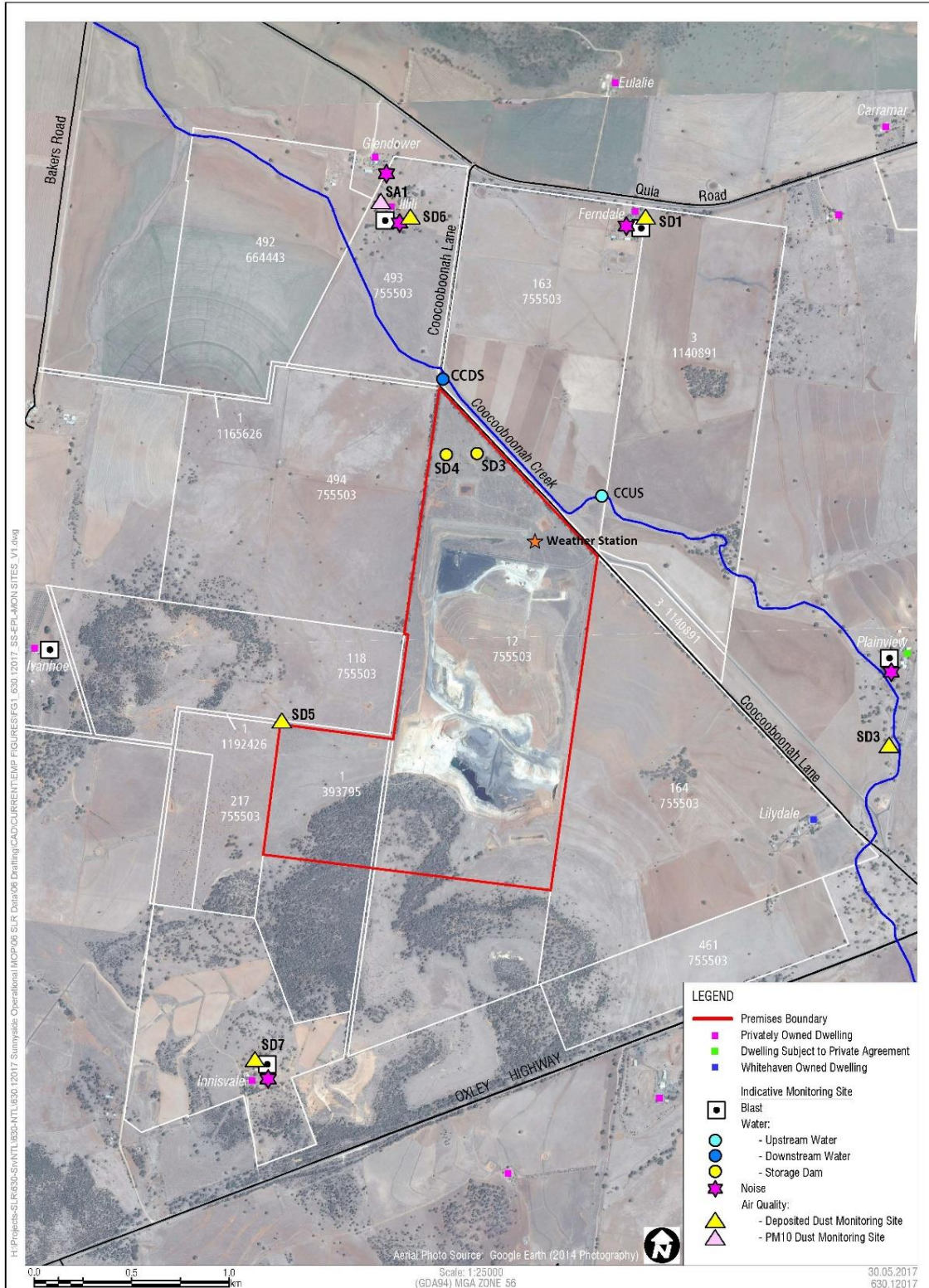
<sup>1</sup> The Total Suspended Solids concentration limits specified for Points 9 and 10 may be exceeded for water discharged provided that:

- (a) the discharge occurs solely as a result of rainfall measured at the premises that exceeds 38.4 millimetres over any consecutive 5 day period immediately prior to the discharge occurring; and
- (b) all practical measures have been implemented to dewater all sediment dams within 5 days of rainfall such that they have sufficient capacity to store run off from a 38.4 millimetre, 5 day rainfall event.

\* Special Frequency 1 means the collection of samples as soon as practicable after each discharge commences and, in any case, not more than 12 hours after each discharge commences.

\*\* Special Frequency 2 means collection of samples quarterly (in the event of flow during the quarter) at a time when there is flow and as soon as practicable after each wet weather discharge from points 9 and 10 commences and in any case not more than 12 hours after each discharge commences.

Figure 1 – EPL 12957 Monitoring Locations





## SUNNYSIDE COAL MINE – MONTHLY MONITORING SUMMARY

### Site Information

**EPL No:** 12957

**EPA Website Link:** <http://epa.nsw.gov.au/prpoeoapp/ViewPOEOLicence.aspx?DOCID=40292&SYSUID=1&LICID=12957>

**Licensee:** Namoi Mining Pty Ltd

**Licensee Address:** Sunnyside Coal Project, 259 Coocooboona Lane, GUNNEDAH NSW 2380

**EPL Monitoring Points:** See Figure 1 below

**Sampling Period:** May 2022

**Obtained Date:** 14<sup>th</sup> June 2022

**Publication Date:** 20<sup>th</sup> June 2022

EPL ID	Pollutant	Units of Measure	Monitoring Frequency	No. of Samples for the Month	Date(s) Sampled	Date(s) Obtained	Min Value	Mean Value	Median Value	Max or Only Value
1	Particulates-Deposited Matter (SD1)	g/m <sup>2</sup> /month	Continuous	1	19/05/2022	31/05/2022	-	-	-	0.45
2	Particulates-Deposited Matter (SD3)	g/m <sup>2</sup> /month	Continuous	1	19/05/2022	31/05/2022	-	-	-	0.21
4	Particulates-Deposited Matter (SD5)	g/m <sup>2</sup> /month	Continuous	1	19/05/2022	31/05/2022	-	-	-	1.58
5	Particulates-Deposited Matter (SD6)	g/m <sup>2</sup> /month	Continuous	1	19/05/2022	31/05/2022	-	-	-	0.71
6	Particulates-Deposited Matter (SD7)	g/m <sup>2</sup> /month	Continuous	1	19/05/2022	31/05/2022	-	-	-	0.48
7	PM <sub>10</sub>	µg/m <sup>3</sup>	Every 6 days	5	4/05/2022 10/05/2022 16/05/2022 22/05/2022 28/05/2022	14/06/2022	0.3	2.3	2.5	5.4
11	TSS	mg/L		0			-	-	-	-

## SUNNYSIDE COAL MINE – MONTHLY MONITORING SUMMARY

EPL ID	Pollutant	Units of Measure	Monitoring Frequency	No. of Samples for the Month	Date(s) Sampled	Date(s) Obtained	Min Value	Mean Value	Median Value	Max or Only Value
	Conductivity	µS/cm	Special Frequency 2**		-	-	-	-	-	-
	Oil & Grease	mg/L					-	-	-	-
	pH	pH					-	-	-	-
	Total organic carbon	mg/L					-	-	-	-
12	TSS	mg/L	Special Frequency 2**	0	-	-	-	-	-	-
	Conductivity	µS /cm					-	-	-	-
	Oil & Grease	mg/L					-	-	-	-
	pH	pH					-	-	-	-
	Total organic carbon	mg/L					-	-	-	-

<sup>1</sup>The Total Suspended Solids concentration limits specified for Points 9 and 10 may be exceeded for water discharged provided that:

(a) the discharge occurs solely as a result of rainfall measured at the premises that exceeds 38.4 millimetres over any consecutive 5 day period immediately prior to the discharge occurring; and

EPL ID	Pollutant	Units of Measure	Monitoring Frequency	No. of Samples for the Month	Date Sampled	Date Obtained	Min Value	Max Value	100%ile Limit	Exceedance (Yes/No)	Comments
9	TSS	mg/L	Special Frequency 1*	0	0	-	-	-	50	-	No discharge
	Conductivity	µS /cm		0			-	-	-	-	No discharge
	Oil & Grease	mg/L		0			-	-	10	-	No discharge
	pH	pH		0			-	-	6.5-8.5	-	No discharge
	Total organic carbon	mg/L		0			-	-	-	-	No discharge
10	TSS	mg/L	Special Frequency 1*	0	0	-	-	-	50	-	No discharge
	Conductivity	µS /cm		0			-	-	-	-	No discharge
	Oil & Grease	mg/L		0			-	-	10	-	No discharge
	pH	pH		0			-	-	6.5-8.5	-	No discharge
	Total organic carbon	mg/L		0			-	-	-	-	No discharge





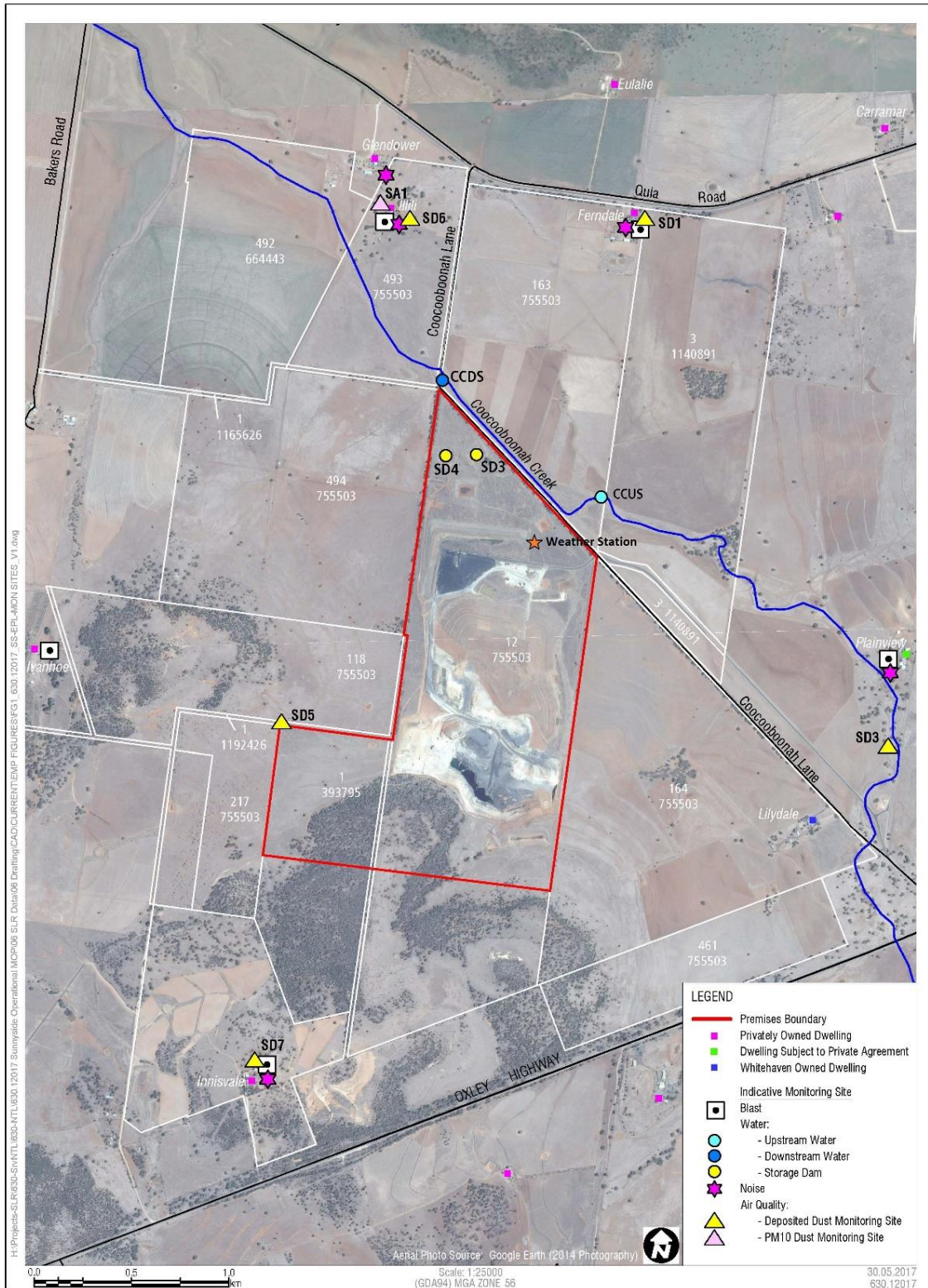
## **SUNNYSIDE COAL MINE – MONTHLY MONITORING SUMMARY**

(b) all practical measures have been implemented to dewater all sediment dams within 5 days of rainfall such that they have sufficient capacity to store run off from a 38.4 millimetre, 5 day rainfall event.

\* Special Frequency 1 means the collection of samples as soon as practicable after each discharge commences and, in any case, not more than 12 hours after each discharge commences.

\*\* Special Frequency 2 means collection of samples quarterly (in the event of flow during the quarter) at a time when there is flow and as soon as practicable after each wet weather discharge from points 9 and 10 commences and in any case not more than 12 hours after each discharge commences.

**Figure 1 – EPL 12957 Monitoring Locations**





## SUNNYSIDE COAL MINE – MONTHLY MONITORING SUMMARY

### Site Information

**EPL No:** 12957

**EPA Website Link:** <http://epa.nsw.gov.au/prpoeoapp/ViewPOEOLicence.aspx?DOCID=40292&SYSUID=1&LICID=12957>

**Licensee:** Namoi Mining Pty Ltd

**Licensee Address:** Sunnyside Coal Project, 259 Coocooboona Lane, GUNNEDAH NSW 2380

**EPL Monitoring Points:** See Figure 1 below

**Sampling Period:** June 2022

**Obtained Date:** 11<sup>th</sup> July 2022

**Publication Date:** 19<sup>th</sup> July 2022

EPL ID	Pollutant	Units of Measure	Monitoring Frequency	No. of Samples for the Month	Date(s) Sampled	Date(s) Obtained	Min Value	Mean Value	Median Value	Max or Only Value
1	Particulates-Deposited Matter (SD1)	g/m <sup>2</sup> /month	Continuous	1	20/06/2022	11/07/2022	-	-	-	1.01
2	Particulates-Deposited Matter (SD3)	g/m <sup>2</sup> /month	Continuous	1	20/06/2022	11/07/2022	-	-	-	1.53
4	Particulates-Deposited Matter (SD5)	g/m <sup>2</sup> /month	Continuous	1	20/06/2022	11/07/2022	-	-	-	0.99
5	Particulates-Deposited Matter (SD6)	g/m <sup>2</sup> /month	Continuous	1	20/06/2022	11/07/2022	-	-	-	0.77
6	Particulates-Deposited Matter (SD7)	g/m <sup>2</sup> /month	Continuous	1	20/06/2022	11/07/2022	-	-	-	0.66
7	PM <sub>10</sub>	µg/m <sup>3</sup>	Every 6 days	5	3/06/2022 9/06/2022 15/06/2022 21/06/2022 27/06/2022	(Last result received) 8/07/2022	0.3	2.6	2.3	4.6
11	TSS	mg/L		0			-	-	-	-

## SUNNYSIDE COAL MINE – MONTHLY MONITORING SUMMARY

EPL ID	Pollutant	Units of Measure	Monitoring Frequency	No. of Samples for the Month	Date(s) Sampled	Date(s) Obtained	Min Value	Mean Value	Median Value	Max or Only Value
	Conductivity	µS/cm	Special Frequency 2**		-	-	-	-	-	-
	Oil & Grease	mg/L					-	-	-	-
	pH	pH					-	-	-	-
	Total organic carbon	mg/L					-	-	-	-
12	TSS	mg/L	Special Frequency 2**	0	-	-	-	-	-	-
	Conductivity	µS /cm					-	-	-	-
	Oil & Grease	mg/L					-	-	-	-
	pH	pH					-	-	-	-
	Total organic carbon	mg/L					-	-	-	-

<sup>1</sup>The Total Suspended Solids concentration limits specified for Points 9 and 10 may be exceeded for water discharged provided that:

(a) the discharge occurs solely as a result of rainfall measured at the premises that exceeds 38.4 millimetres over any consecutive 5 day period immediately prior to the discharge occurring; and

EPL ID	Pollutant	Units of Measure	Monitoring Frequency	No. of Samples for the Month	Date Sampled	Date Obtained	Min Value	Max Value	100%ile Limit	Exceedance (Yes/No)	Comments
9	TSS	mg/L	Special Frequency 1*	0	0	-	-	-	50	-	No discharge
	Conductivity	µS /cm		0			-	-	-	-	No discharge
	Oil & Grease	mg/L		0			-	-	10	-	No discharge
	pH	pH		0			-	-	6.5-8.5	-	No discharge
	Total organic carbon	mg/L		0			-	-	-	-	No discharge
10	TSS	mg/L	Special Frequency 1*	0	0	-	-	-	50	-	No discharge
	Conductivity	µS /cm		0			-	-	-	-	No discharge
	Oil & Grease	mg/L		0			-	-	10	-	No discharge
	pH	pH		0			-	-	6.5-8.5	-	No discharge
	Total organic carbon	mg/L		0			-	-	-	-	No discharge



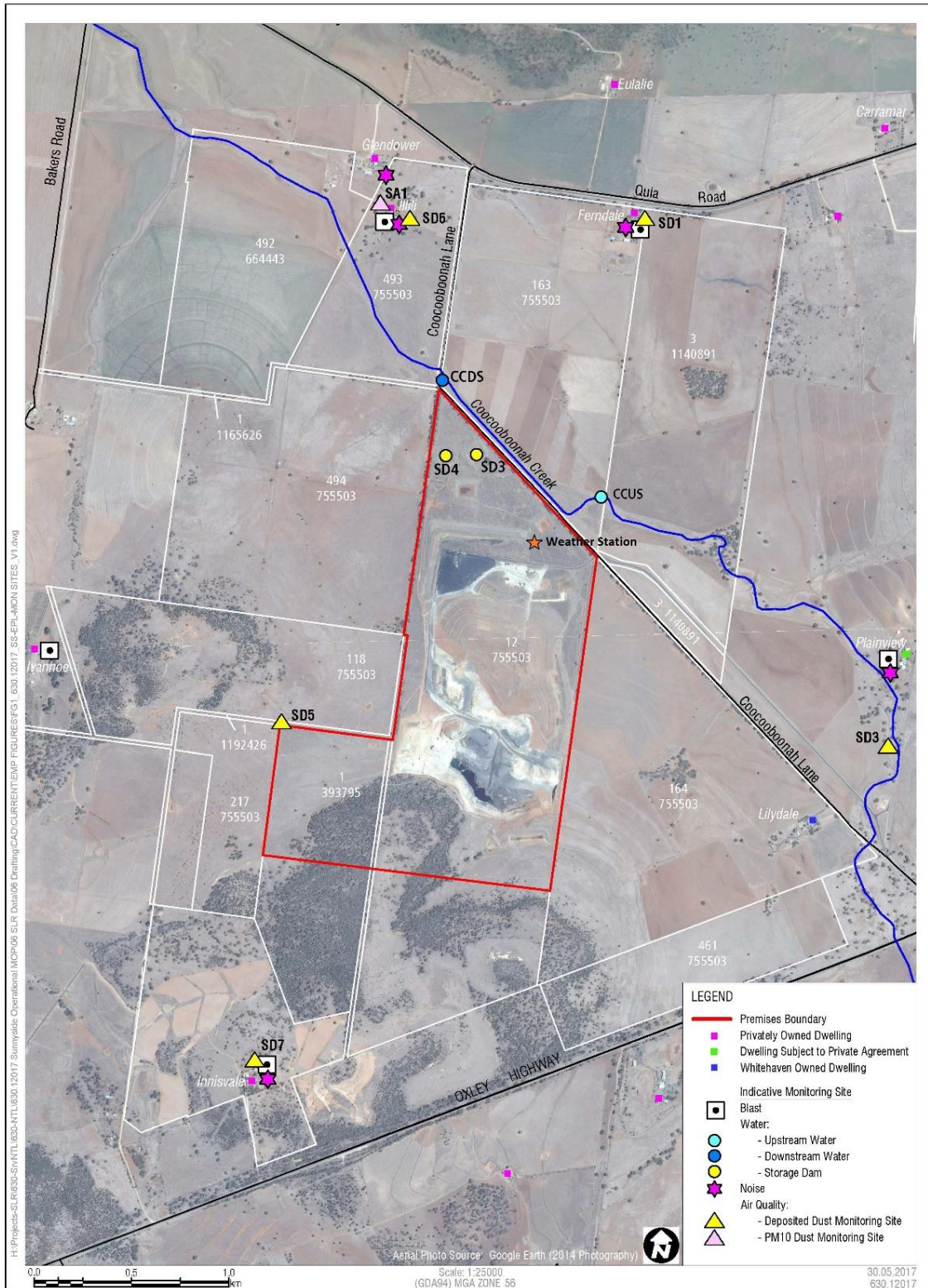
## **SUNNYSIDE COAL MINE – MONTHLY MONITORING SUMMARY**

(b) all practical measures have been implemented to dewater all sediment dams within 5 days of rainfall such that they have sufficient capacity to store run off from a 38.4 millimetre, 5 day rainfall event.

\* Special Frequency 1 means the collection of samples as soon as practicable after each discharge commences and, in any case, not more than 12 hours after each discharge commences.

\*\* Special Frequency 2 means collection of samples quarterly (in the event of flow during the quarter) at a time when there is flow and as soon as practicable after each wet weather discharge from points 9 and 10 commences and in any case not more than 12 hours after each discharge commences.

Figure 1 – EPL 12957 Monitoring Locations





## SUNNYSIDE COAL MINE – MONTHLY MONITORING SUMMARY

### Site Information

**EPL No:** 12957

**EPA Website Link:** <http://epa.nsw.gov.au/prpoeoapp/ViewPOEOLicence.aspx?DOCID=40292&SYSUID=1&LICID=12957>

**Licensee:** Namoi Mining Pty Ltd

**Licensee Address:** Sunnyside Coal Project, 259 Coocooboona Lane, GUNNEDAH NSW 2380

**EPL Monitoring Points:** See Figure 1 below

**Sampling Period:** July 2022

**Obtained Date:** 9<sup>th</sup> August 2022

**Publication Date:** 19<sup>th</sup> August 2022

EPL ID	Pollutant	Units of Measure	Monitoring Frequency	No. of Samples for the Month	Date(s) Sampled	Date(s) Obtained	Min Value	Mean Value	Median Value	Max or Only Value
1	Particulates-Deposited Matter (SD1)	g/m <sup>2</sup> /month	Continuous	1	19/07/2022	3/08/2022	-	-	-	0.78
2	Particulates-Deposited Matter (SD3)	g/m <sup>2</sup> /month	Continuous	1	19/07/2022	3/08/2022	-	-	-	0.49
4	Particulates-Deposited Matter (SD5)	g/m <sup>2</sup> /month	Continuous	1	19/07/2022	3/08/2022	-	-	-	2.34
5	Particulates-Deposited Matter (SD6)	g/m <sup>2</sup> /month	Continuous	1	19/07/2022	3/08/2022	-	-	-	2.9
6	Particulates-Deposited Matter (SD7)	g/m <sup>2</sup> /month	Continuous	1	19/07/2022	3/08/2022	-	-	-	0.43
7	PM <sub>10</sub>	µg/m <sup>3</sup>	Every 6 days	5	3/07/2022 9/07/2022 15/07/2022 21/07/2022 27/07/2022	(Last result received) 9/08/2022	0.2	1.2	0.7	3
11	TSS	mg/L		0			-	-	-	-

## SUNNYSIDE COAL MINE – MONTHLY MONITORING SUMMARY

EPL ID	Pollutant	Units of Measure	Monitoring Frequency	No. of Samples for the Month	Date(s) Sampled	Date(s) Obtained	Min Value	Mean Value	Median Value	Max or Only Value
	Conductivity	µS/cm	Special Frequency 2**		-	-	-	-	-	-
	Oil & Grease	mg/L					-	-	-	-
	pH	pH					-	-	-	-
	Total organic carbon	mg/L					-	-	-	-
12	TSS	mg/L	Special Frequency 2**	0	-	-	-	-	-	-
	Conductivity	µS /cm					-	-	-	-
	Oil & Grease	mg/L					-	-	-	-
	pH	pH					-	-	-	-
	Total organic carbon	mg/L					-	-	-	-

<sup>1</sup>The Total Suspended Solids concentration limits specified for Points 9 and 10 may be exceeded for water discharged provided that:

(a) the discharge occurs solely as a result of rainfall measured at the premises that exceeds 38.4 millimetres over any consecutive 5 day period immediately prior to the discharge occurring; and

EPL ID	Pollutant	Units of Measure	Monitoring Frequency	No. of Samples for the Month	Date Sampled	Date Obtained	Min Value	Max Value	100%ile Limit	Exceedance (Yes/No)	Comments
9	TSS	mg/L	Special Frequency 1*	0	0	-	-	-	50	-	No discharge
	Conductivity	µS /cm		0			-	-	-	-	No discharge
	Oil & Grease	mg/L		0			-	-	10	-	No discharge
	pH	pH		0			-	-	6.5-8.5	-	No discharge
	Total organic carbon	mg/L		0			-	-	-	-	No discharge
10	TSS	mg/L	Special Frequency 1*	0	0	-	-	-	50	-	No discharge
	Conductivity	µS /cm		0			-	-	-	-	No discharge
	Oil & Grease	mg/L		0			-	-	10	-	No discharge
	pH	pH		0			-	-	6.5-8.5	-	No discharge
	Total organic carbon	mg/L		0			-	-	-	-	No discharge





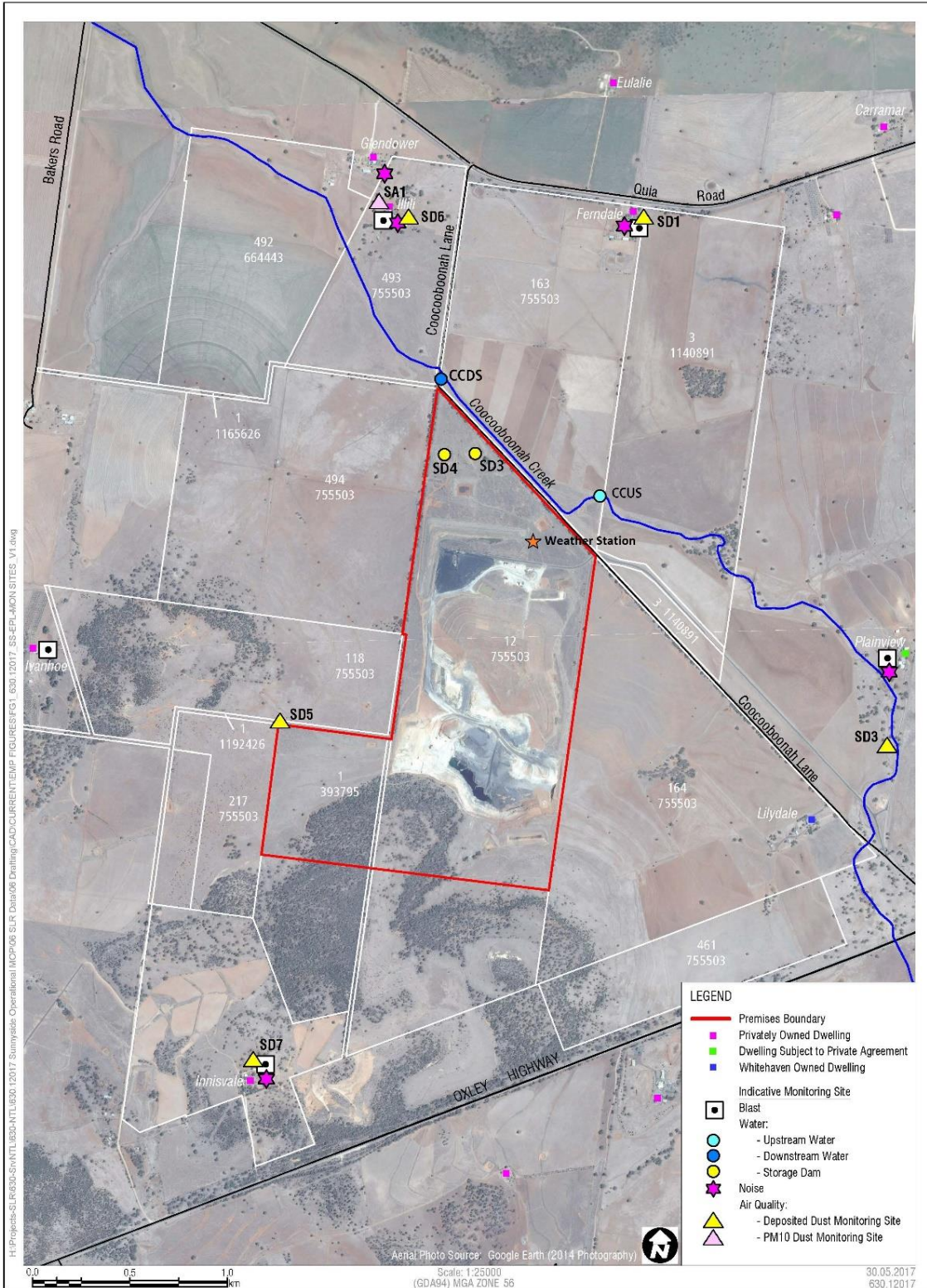
## **SUNNYSIDE COAL MINE – MONTHLY MONITORING SUMMARY**

(b) all practical measures have been implemented to dewater all sediment dams within 5 days of rainfall such that they have sufficient capacity to store run off from a 38.4 millimetre, 5 day rainfall event.

\* Special Frequency 1 means the collection of samples as soon as practicable after each discharge commences and, in any case, not more than 12 hours after each discharge commences.

\*\* Special Frequency 2 means collection of samples quarterly (in the event of flow during the quarter) at a time when there is flow and as soon as practicable after each wet weather discharge from points 9 and 10 commences and in any case not more than 12 hours after each discharge commences.

Figure 1 – EPL 12957 Monitoring Locations





## SUNNYSIDE COAL MINE – MONTHLY MONITORING SUMMARY

### Site Information

**EPL No:** 12957

**EPA Website Link:** <http://epa.nsw.gov.au/prpoeoapp/ViewPOEOLicence.aspx?DOCID=40292&SYSUID=1&LICID=12957>

**Licensee:** Namoi Mining Pty Ltd

**Licensee Address:** Sunnyside Coal Project, 259 Coocooboona Lane, GUNNEDAH NSW 2380

**EPL Monitoring Points:** See Figure 1 below

**Sampling Period:** August 2022

**Obtained Date:** 10<sup>th</sup> September 2022

**Publication Date:** 23<sup>rd</sup> September 2022

EPL ID	Pollutant	Units of Measure	Monitoring Frequency	No. of Samples for the Month	Date(s) Sampled	Date(s) Obtained	Min Value	Mean Value	Median Value	Max or Only Value
1	Particulates-Deposited Matter (SD1)	g/m <sup>2</sup> /month	Continuous	1	18/08/2022	6/09/2022	-	-	-	1.97
2	Particulates-Deposited Matter (SD3)	g/m <sup>2</sup> /month	Continuous	1	18/08/2022	6/09/2022	-	-	-	41.71
4	Particulates-Deposited Matter (SD5)	g/m <sup>2</sup> /month	Continuous	1	18/08/2022	6/09/2022	-	-	-	1.04
5	Particulates-Deposited Matter (SD6)	g/m <sup>2</sup> /month	Continuous	1	18/08/2022	6/09/2022	-	-	-	0.36
6	Particulates-Deposited Matter (SD7)	g/m <sup>2</sup> /month	Continuous	1	18/08/2022	6/09/2022	-	-	-	0.32
7	PM <sub>10</sub>	µg/m <sup>3</sup>	Every 6 days	5	8/08/2022 14/08/2022 20/08/2022 23/08/2022 26/08/2022	(Last result received) 10/09/2022	0.05	1.37	0.9	4.3
11	TSS	mg/L		0			-	-	-	-

## SUNNYSIDE COAL MINE – MONTHLY MONITORING SUMMARY

EPL ID	Pollutant	Units of Measure	Monitoring Frequency	No. of Samples for the Month	Date(s) Sampled	Date(s) Obtained	Min Value	Mean Value	Median Value	Max or Only Value
	Conductivity	µS/cm	Special Frequency 2**		-	-	-	-	-	-
	Oil & Grease	mg/L					-	-	-	-
	pH	pH					-	-	-	-
	Total organic carbon	mg/L					-	-	-	-
12	TSS	mg/L	Special Frequency 2**	0	-	-	-	-	-	-
	Conductivity	µS /cm					-	-	-	-
	Oil & Grease	mg/L					-	-	-	-
	pH	pH					-	-	-	-
	Total organic carbon	mg/L					-	-	-	-

<sup>1</sup>The Total Suspended Solids concentration limits specified for Points 9 and 10 may be exceeded for water discharged provided that:

(a) the discharge occurs solely as a result of rainfall measured at the premises that exceeds 38.4 millimetres over any consecutive 5 day period immediately prior to the discharge occurring; and

EPL ID	Pollutant	Units of Measure	Monitoring Frequency	No. of Samples for the Month	Date Sampled	Date Obtained	Min Value	Max Value	100%ile Limit	Exceedance (Yes/No)	Comments
9	TSS	mg/L	Special Frequency 1*	0	0	-	-	-	50	-	No discharge
	Conductivity	µS /cm		0			-	-	-	-	No discharge
	Oil & Grease	mg/L		0			-	-	10	-	No discharge
	pH	pH		0			-	-	6.5-8.5	-	No discharge
	Total organic carbon	mg/L		0			-	-	-	-	No discharge
10	TSS	mg/L	Special Frequency 1*	0	0	-	-	-	50	-	No discharge
	Conductivity	µS /cm		0			-	-	-	-	No discharge
	Oil & Grease	mg/L		0			-	-	10	-	No discharge
	pH	pH		0			-	-	6.5-8.5	-	No discharge
	Total organic carbon	mg/L		0			-	-	-	-	No discharge



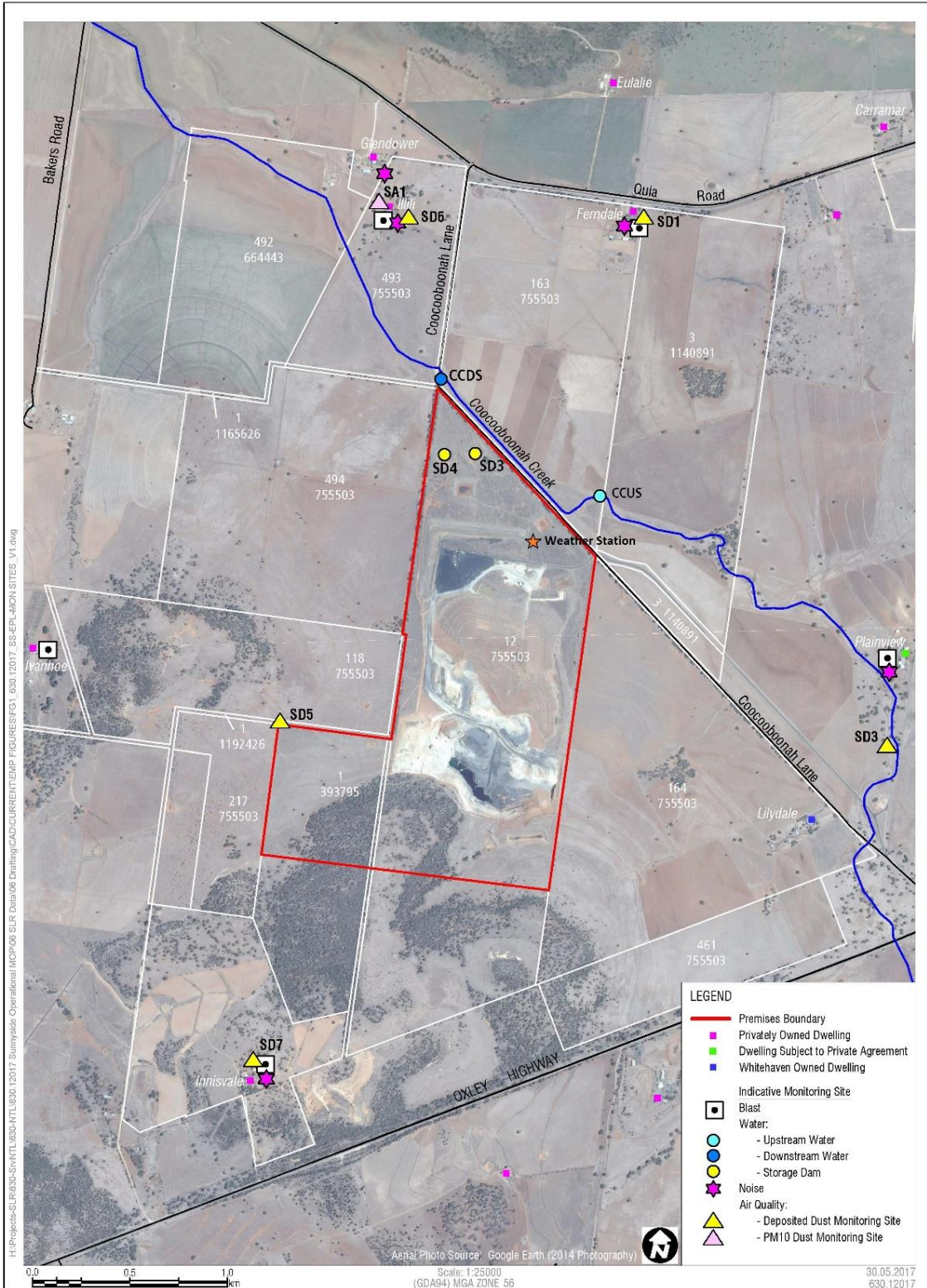
## **SUNNYSIDE COAL MINE – MONTHLY MONITORING SUMMARY**

(b) all practical measures have been implemented to dewater all sediment dams within 5 days of rainfall such that they have sufficient capacity to store run off from a 38.4 millimetre, 5 day rainfall event.

\* Special Frequency 1 means the collection of samples as soon as practicable after each discharge commences and, in any case, not more than 12 hours after each discharge commences.

\*\* Special Frequency 2 means collection of samples quarterly (in the event of flow during the quarter) at a time when there is flow and as soon as practicable after each wet weather discharge from points 9 and 10 commences and in any case not more than 12 hours after each discharge commences.

Figure 1 – EPL 12957 Monitoring Locations





## SUNNYSIDE COAL MINE – MONTHLY MONITORING SUMMARY

### Site Information

**EPL No:** 12957

**EPA Website Link:** <http://epa.nsw.gov.au/prpoeoapp/ViewPOEOLicence.aspx?DOCID=40292&SYSUID=1&LICID=12957>

**Licensee:** Namoi Mining Pty Ltd

**Licensee Address:** Sunnyside Coal Project, 259 Coocooboona Lane, GUNNEDAH NSW 2380

**EPL Monitoring Points:** See Figure 1 below

**Sampling Period:** September 2022

**Obtained Date:** 10<sup>th</sup> October 2022

**Publication Date:** 19<sup>th</sup> October 2022

EPL ID	Pollutant	Units of Measure	Monitoring Frequency	No. of Samples for the Month	Date(s) Sampled	Date(s) Obtained	Min Value	Mean Value	Median Value	Max or Only Value
1	Particulates-Deposited Matter (SD1)	g/m <sup>2</sup> /month	Continuous	1	15/09/2022	30/09/2022	-	-	-	6.68
2	Particulates-Deposited Matter (SD3)	g/m <sup>2</sup> /month	Continuous	1	15/09/2022	30/09/2022	-	-	-	1.97
4	Particulates-Deposited Matter (SD5)	g/m <sup>2</sup> /month	Continuous	1	15/09/2022	30/09/2022	-	-	-	0.65
5	Particulates-Deposited Matter (SD6)	g/m <sup>2</sup> /month	Continuous	1	15/09/2022	30/09/2022	-	-	-	0.33
6	Particulates-Deposited Matter (SD7)	g/m <sup>2</sup> /month	Continuous	1	15/09/2022	30/09/2022	-	-	-	0.42
7	PM <sub>10</sub>	µg/m <sup>3</sup>	Every 6 days	5	1/09/2022 7/09/2022 13/09/2022 19/09/2022 25/09/2022	(Last result received) 10/10/2022	2.7	4	3.1	6.9
11	TSS	mg/L					-	-	-	60

## SUNNYSIDE COAL MINE – MONTHLY MONITORING SUMMARY

EPL ID	Pollutant	Units of Measure	Monitoring Frequency	No. of Samples for the Month	Date(s) Sampled	Date(s) Obtained	Min Value	Mean Value	Median Value	Max or Only Value
	Conductivity	µS/cm	Special Frequency 2**	1	16/09/2022	27/09/2022	-	-	-	120
	Oil & Grease	mg/L					-	-	-	<5
	pH	pH					-	-	-	7.38
	Total organic carbon	mg/L					-	-	-	14
12	TSS	mg/L	Special Frequency 2**	1	16/09/2022	27/09/2022	-	-	-	1880
	Conductivity	µS /cm					-	-	-	112
	Oil & Grease	mg/L					-	-	-	<5
	pH	pH					-	-	-	7.63
	Total organic carbon	mg/L					-	-	-	14

<sup>1</sup>The Total Suspended Solids concentration limits specified for Points 9 and 10 may be exceeded for water discharged provided that:

(a) the discharge occurs solely as a result of rainfall measured at the premises that exceeds 38.4 millimetres over any consecutive 5 day period immediately prior to the discharge occurring; and

EPL ID	Pollutant	Units of Measure	Monitoring Frequency	No. of Samples for the Month	Date Sampled	Date Obtained	Min Value	Max Value	100%ile Limit	Exceedance (Yes/No)	Comments
9	TSS	mg/L	Special Frequency 1*	0	0	-	-	-	50	-	No discharge
	Conductivity	µS /cm		0			-	-	-	-	No discharge
	Oil & Grease	mg/L		0			-	-	10	-	No discharge
	pH	pH		0			-	-	6.5-8.5	-	No discharge
	Total organic carbon	mg/L		0			-	-	-	-	No discharge
10	TSS	mg/L	Special Frequency 1*	0	0	-	-	-	50	-	No discharge
	Conductivity	µS /cm		0			-	-	-	-	No discharge
	Oil & Grease	mg/L		0			-	-	10	-	No discharge
	pH	pH		0			-	-	6.5-8.5	-	No discharge
	Total organic carbon	mg/L		0			-	-	-	-	No discharge





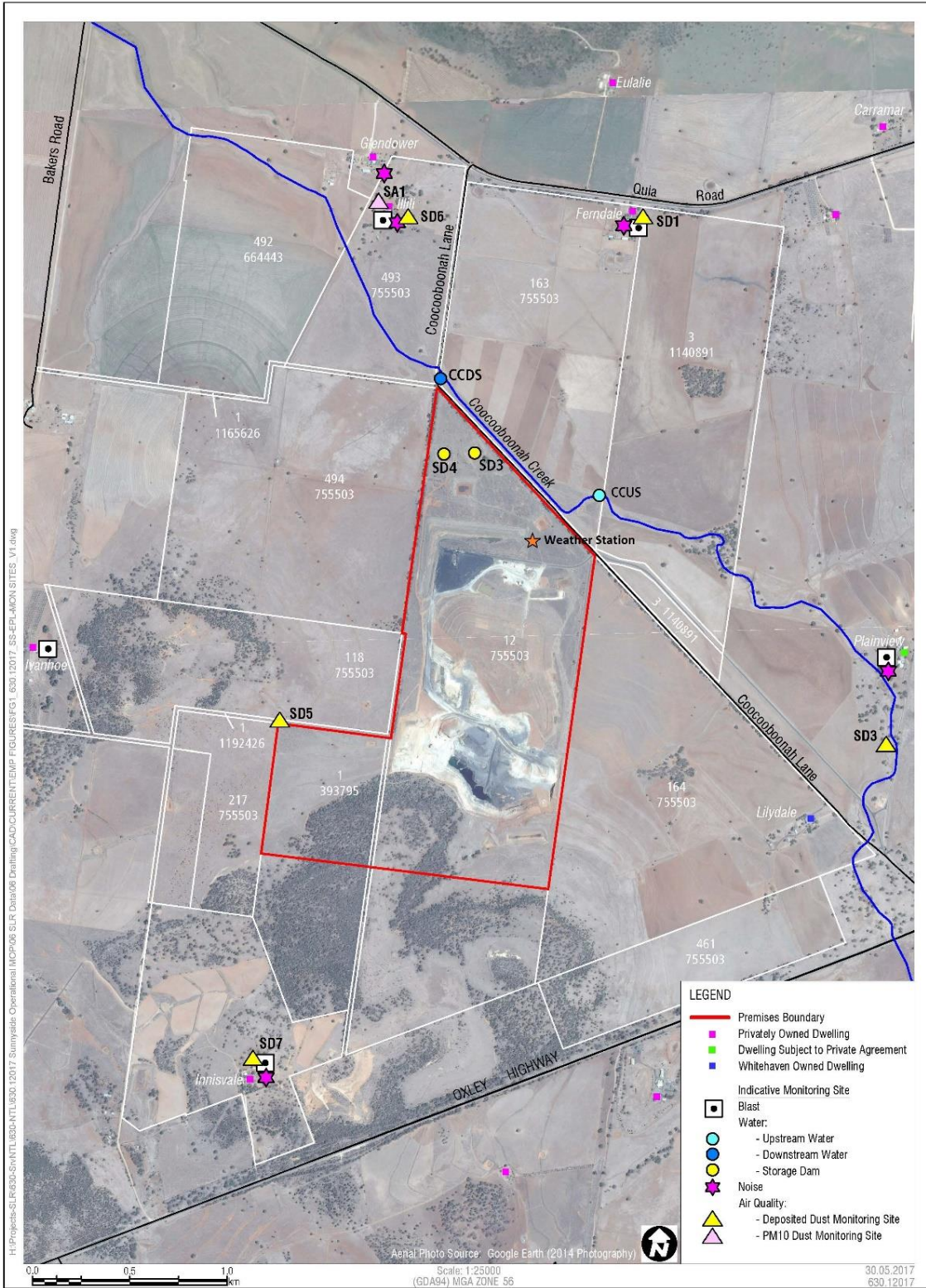
## **SUNNYSIDE COAL MINE – MONTHLY MONITORING SUMMARY**

(b) all practical measures have been implemented to dewater all sediment dams within 5 days of rainfall such that they have sufficient capacity to store run off from a 38.4 millimetre, 5 day rainfall event.

\* Special Frequency 1 means the collection of samples as soon as practicable after each discharge commences and, in any case, not more than 12 hours after each discharge commences.

\*\* Special Frequency 2 means collection of samples quarterly (in the event of flow during the quarter) at a time when there is flow and as soon as practicable after each wet weather discharge from points 9 and 10 commences and in any case not more than 12 hours after each discharge commences.

Figure 1 – EPL 12957 Monitoring Locations





## SUNNYSIDE COAL MINE – MONTHLY MONITORING SUMMARY

### Site Information

**EPL No:** 12957

**EPA Website Link:** <http://epa.nsw.gov.au/prpoeoapp/ViewPOEOLicence.aspx?DOCID=40292&SYSUID=1&LICID=12957>

**Licensee:** Namoi Mining Pty Ltd

**Licensee Address:** Sunnyside Coal Project, 259 Coocooboona Lane, GUNNEDAH NSW 2380

**EPL Monitoring Points:** See Figure 1 below

**Sampling Period:** October 2022

**Obtained Date:** 16<sup>th</sup> November 2022

**Publication Date:** 17<sup>th</sup> November 2022

EPL ID	Pollutant	Units of Measure	Monitoring Frequency	No. of Samples for the Month	Date(s) Sampled	Date(s) Obtained	Min Value	Mean Value	Median Value	Max or Only Value
1	Particulates-Deposited Matter (SD1)	g/m <sup>2</sup> /month	Continuous	1	17/10/2022	11/11/2022	-	-	-	9.66
2	Particulates-Deposited Matter (SD3)	g/m <sup>2</sup> /month	Continuous	1	17/10/2022	11/11/2022	-	-	-	1.03
4	Particulates-Deposited Matter (SD5)	g/m <sup>2</sup> /month	Continuous	1	17/10/2022	11/11/2022	-	-	-	0.55
5	Particulates-Deposited Matter (SD6)	g/m <sup>2</sup> /month	Continuous	1	17/10/2022	11/11/2022	-	-	-	1.21
6	Particulates-Deposited Matter (SD7)	g/m <sup>2</sup> /month	Continuous	1	17/10/2022	11/11/2022	-	-	-	0.59
7	PM <sub>10</sub>	µg/m <sup>3</sup>	Every 6 days	5	31/10/2022	(Last result received) 16/11/2022	4.6	6	6.2	7.0
11	TSS	mg/L	Special Frequency 2** (CCUS)				-	-	-	44
	Conductivity	µS/cm					-	-	-	94

## SUNNYSIDE COAL MINE – MONTHLY MONITORING SUMMARY

EPL ID	Pollutant	Units of Measure	Monitoring Frequency	No. of Samples for the Month	Date(s) Sampled	Date(s) Obtained	Min Value	Mean Value	Median Value	Max or Only Value
	Oil & Grease	mg/L		1	21/10/2022	1/11/2022	-	-	-	<5
	pH	pH					-	-	-	7.02
	Total organic carbon	mg/L					-	-	-	11
12	TSS	mg/L	Special Frequency 2**(CCDS)	1	21/10/2022	1/11/2022	-	-	-	125
	Conductivity	µS /cm					-	-	-	94
	Oil & Grease	mg/L					-	-	-	<5
	pH	pH					-	-	-	7.07
	Total organic carbon	mg/L					-	-	-	10

<sup>1</sup> The Total Suspended Solids concentration limits specified for Points 9 and 10 may be exceeded for water discharged provided that:

- (a) the discharge occurs solely as a result of rainfall measured at the premises that exceeds 38.4 millimetres over any consecutive 5 day period immediately prior to the discharge occurring; and

EPL ID	Pollutant	Units of Measure	Monitoring Frequency	No. of Samples for the Month	Date Sampled	Date Obtained	Min Value	Max Value	100%ile Limit	Exceedance (Yes/No)	Comments
9	TSS	mg/L	Special Frequency 1*(SD3)	0		-	-	-	50	-	No discharge
	Conductivity	µS /cm		0			-	-	-	-	No discharge
	Oil & Grease	mg/L		0			-	-	10	-	No discharge
	pH	pH		0			-	-	6.5-8.5	-	No discharge
	Total organic carbon	mg/L		0			-	-	-	-	No discharge
10	TSS	mg/L	Special Frequency 1*(SD4)	0		-	-	-	50	-	No discharge
	Conductivity	µS /cm		0			-	-	-	-	No discharge
	Oil & Grease	mg/L		0			-	-	10	-	No discharge
	pH	pH		0			-	-	6.5-8.5	-	No discharge
	Total organic carbon	mg/L		0			-	-	-	-	No discharge



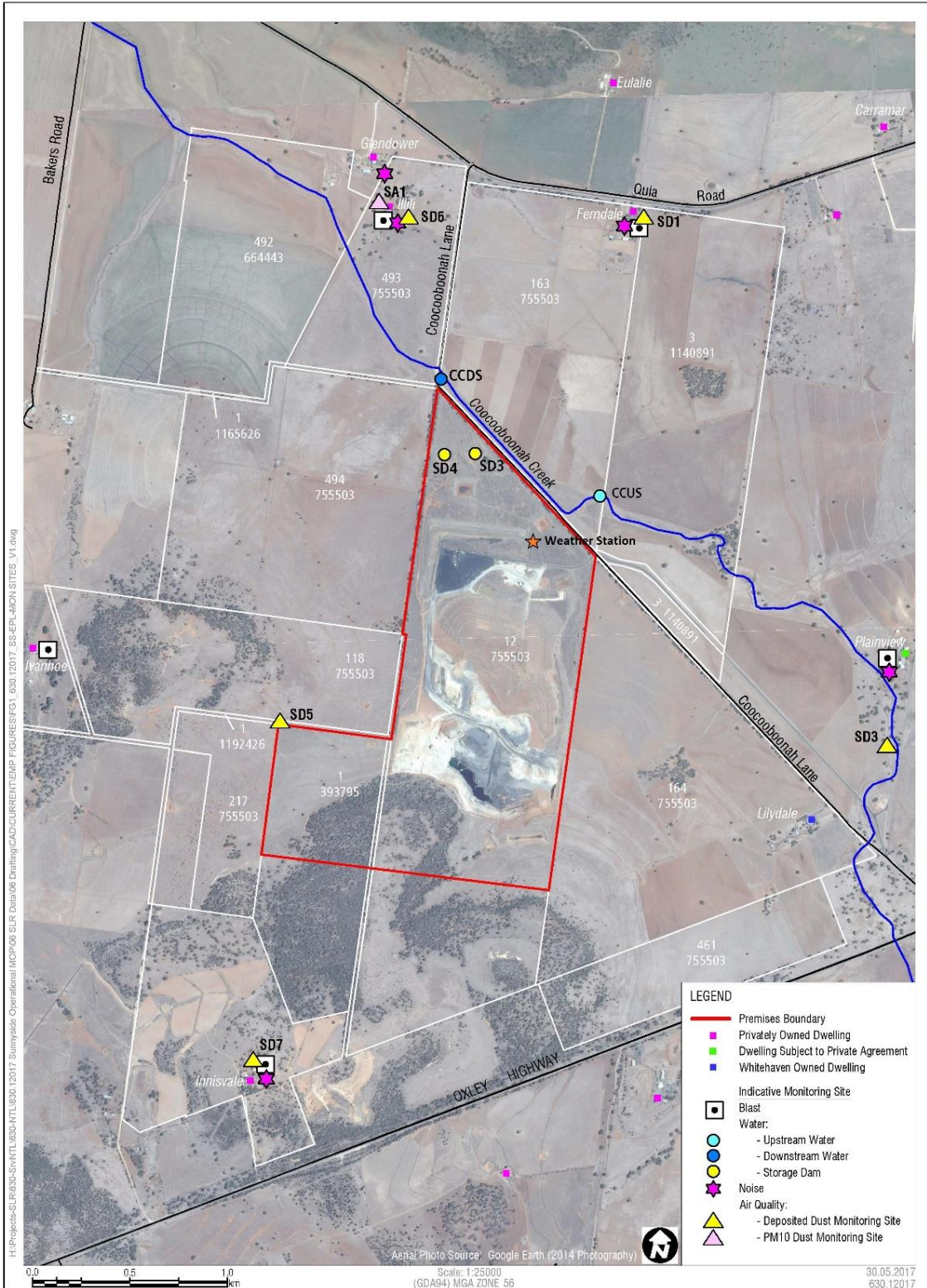
## **SUNNYSIDE COAL MINE – MONTHLY MONITORING SUMMARY**

(b) all practical measures have been implemented to dewater all sediment dams within 5 days of rainfall such that they have sufficient capacity to store run off from a 38.4 millimetre, 5 day rainfall event.

\* Special Frequency 1 means the collection of samples as soon as practicable after each discharge commences and, in any case, not more than 12 hours after each discharge commences.

\*\* Special Frequency 2 means collection of samples quarterly (in the event of flow during the quarter) at a time when there is flow and as soon as practicable after each wet weather discharge from points 9 and 10 commences and in any case not more than 12 hours after each discharge commences.

Figure 1 – EPL 12957 Monitoring Locations





## SUNNYSIDE COAL MINE – MONTHLY MONITORING SUMMARY

### Site Information

**EPL No:** 12957

**EPA Website Link:** <http://epa.nsw.gov.au/prpoeoapp/ViewPOEOLicence.aspx?DOCID=40292&SYSUID=1&LICID=12957>

**Licensee:** Namoi Mining Pty Ltd

**Licensee Address:** Sunnyside Coal Project, 259 Coocooboona Lane, GUNNEDAH NSW 2380

**EPL Monitoring Points:** See Figure 1 below

**Sampling Period:** November 2022

**Obtained Date:** 16<sup>th</sup> December 2022

**Publication Date:** 20<sup>th</sup> December 2022

EPL ID	Pollutant	Units of Measure	Monitoring Frequency	No. of Samples for the Month	Date(s) Sampled	Date(s) Obtained	Min Value	Mean Value	Median Value	Max or Only Value
1	Particulates-Deposited Matter (SD1)	g/m <sup>2</sup> /month	Continuous	1	16/11/2022	6/12/2022	-	-	-	11.0
2	Particulates-Deposited Matter (SD3)	g/m <sup>2</sup> /month	Continuous	1	16/11/2022	6/12/2022	-	-	-	0.4
4	Particulates-Deposited Matter (SD5)	g/m <sup>2</sup> /month	Continuous	1	16/11/2022	6/12/2022	-	-	-	0.4
5	Particulates-Deposited Matter (SD6)	g/m <sup>2</sup> /month	Continuous	1	16/11/2022	6/12/2022	-	-	-	1.8
6	Particulates-Deposited Matter (SD7)	g/m <sup>2</sup> /month	Continuous	1	16/11/2022	6/12/2022	-	-	-	0.7
7	PM <sub>10</sub>	µg/m <sup>3</sup>	Every 6 days	5	6/11/2022 12/11/2022 18/11/2022 24/11/2022 30/11/2022	(Last result received) 16/12/2022	0.2	5	6.1	10.2

**SUNNYSIDE COAL MINE – MONTHLY MONITORING SUMMARY**

EPL ID	Pollutant	Units of Measure	Monitoring Frequency	No. of Samples for the Month	Date(s) Sampled	Date(s) Obtained	Min Value	Mean Value	Median Value	Max or Only Value
11	TSS	mg/L	Special Frequency 2** (CCUS)	0	-	-	-	-	-	-
	Conductivity	µS/cm					-	-	-	-
	Oil & Grease	mg/L					-	-	-	-
	pH	pH					-	-	-	-
	Total organic carbon	mg/L					-	-	-	-
12	TSS	mg/L	Special Frequency 2**(CCDS)	0	-	-	-	-	-	-
	Conductivity	µS/cm					-	-	-	-
	Oil & Grease	mg/L					-	-	-	-
	pH	pH					-	-	-	-
	Total organic carbon	mg/L					-	-	-	-

<sup>1</sup> The Total Suspended Solids concentration limits specified for Points 9 and 10 may be exceeded for water discharged provided that:

- (a) the discharge occurs solely as a result of rainfall measured at the premises that exceeds 38.4 millimetres over any consecutive 5-day period immediately prior to the discharge occurring; and

EPL ID	Pollutant	Units of Measure	Monitoring Frequency	No. of Samples for the Month	Date Sampled	Date Obtained	Min Value	Max Value	100%ile Limit	Exceedance (Yes/No)	Comments
9	TSS	mg/L	Special Frequency 1*(SD3)	0	0	-	-	-	50	-	No discharge
	Conductivity	µS/cm		0			-	-	-	-	No discharge
	Oil & Grease	mg/L		0			-	-	10	-	No discharge
	pH	pH		0			-	-	6.5-8.5	-	No discharge
	Total organic carbon	mg/L		0			-	-	-	-	No discharge
10	TSS	mg/L	Special Frequency 1*(SD4)	0	0	-	-	-	50	-	No discharge
	Conductivity	µS/cm		0			-	-	-	-	No discharge
	Oil & Grease	mg/L		0			-	-	10	-	No discharge
	pH	pH		0			-	-	6.5-8.5	-	No discharge
	Total organic carbon	mg/L		0			-	-	-	-	No discharge





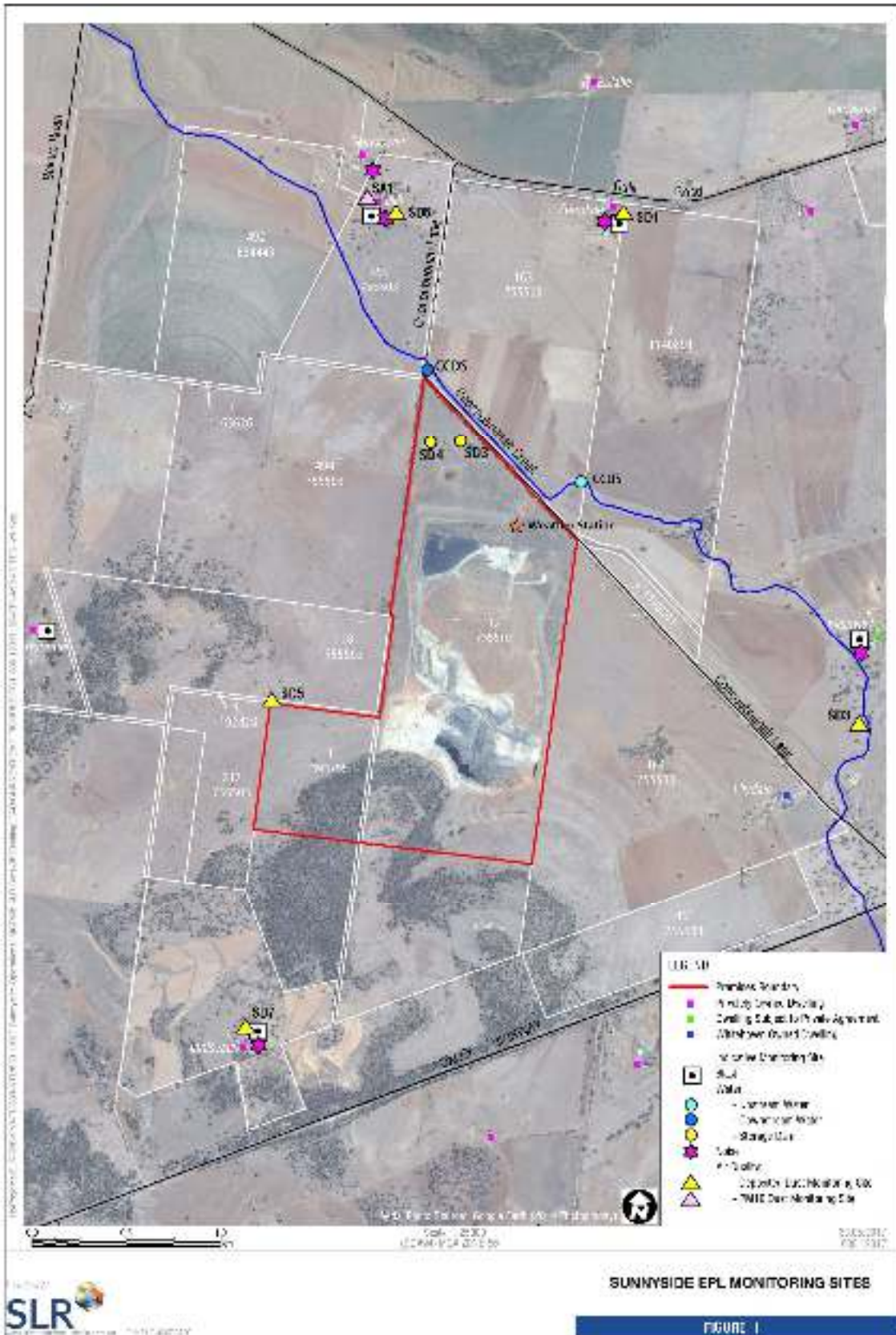
## **SUNNYSIDE COAL MINE – MONTHLY MONITORING SUMMARY**

(b) all practical measures have been implemented to dewater all sediment dams within 5 days of rainfall such that they have sufficient capacity to store run off from a 38.4 millimetre, 5 day rainfall event.

\* Special Frequency 1 means the collection of samples as soon as practicable after each discharge commences and, in any case, not more than 12 hours after each discharge commences.

\*\* Special Frequency 2 means collection of samples quarterly (in the event of flow during the quarter) at a time when there is flow and as soon as practicable after each wet weather discharge from points 9 and 10 commences and in any case not more than 12 hours after each discharge commences.

Figure 1 – EPL 12957 Monitoring Locations





## SUNNYSIDE COAL MINE – MONTHLY MONITORING SUMMARY

### Site Information

**EPL No:** 12957

**EPA Website Link:** <http://epa.nsw.gov.au/prpoeoapp/ViewPOEOLicence.aspx?DOCID=40292&SYSUID=1&LICID=12957>

**Licensee:** Namoi Mining Pty Ltd

**Licensee Address:** Sunnyside Coal Project, 259 Coocooboona Lane, GUNNEDAH NSW 2380

**EPL Monitoring Points:** See Figure 1 below

**Sampling Period:** December 2022

**Obtained Date:** 16<sup>th</sup> January 2023

**Publication Date:** 17<sup>th</sup> January 2023

EPL ID	Pollutant	Units of Measure	Monitoring Frequency	No. of Samples for the Month	Date(s) Sampled	Date(s) Obtained	Min Value	Mean Value	Median Value	Max or Only Value
1	Particulates-Deposited Matter (SD1)	g/m <sup>2</sup> /month	Continuous	1	15/12/2022	16/1/2023	-	-	-	1.98
2	Particulates-Deposited Matter (SD3)	g/m <sup>2</sup> /month	Continuous	1	15/12/2022	16/1/2023	-	-	-	1.35
4	Particulates-Deposited Matter (SD5)	g/m <sup>2</sup> /month	Continuous	1	15/12/2022	16/1/2023	-	-	-	1.95
5	Particulates-Deposited Matter (SD6)	g/m <sup>2</sup> /month	Continuous	1	15/12/2022	16/1/2023	-	-	-	1.32
6	Particulates-Deposited Matter (SD7)	g/m <sup>2</sup> /month	Continuous	1	15/12/2022	16/1/2023	-	-	-	1.67
7	PM <sub>10</sub>	µg/m <sup>3</sup>	Every 6 days	5	6/12/2022 12/12/2022 18/12/2022 24/12/2022 30/12/2022	(Last result received) 16/01/2023	2	7.3	7.2	14.2

## SUNNYSIDE COAL MINE – MONTHLY MONITORING SUMMARY

EPL ID	Pollutant	Units of Measure	Monitoring Frequency	No. of Samples for the Month	Date(s) Sampled	Date(s) Obtained	Min Value	Mean Value	Median Value	Max or Only Value
11	TSS	mg/L	Special Frequency 2** (CCUS)	0	-	-	-	-	-	-
	Conductivity	µS/cm					-	-	-	-
	Oil & Grease	mg/L					-	-	-	-
	pH	pH					-	-	-	-
	Total organic carbon	mg/L					-	-	-	-
12	TSS	mg/L	Special Frequency 2**(CCDS)	0	-	-	-	-	-	-
	Conductivity	µS/cm					-	-	-	-
	Oil & Grease	mg/L					-	-	-	-
	pH	pH					-	-	-	-
	Total organic carbon	mg/L					-	-	-	-

<sup>1</sup> The Total Suspended Solids concentration limits specified for Points 9 and 10 may be exceeded for water discharged provided that:

- (a) the discharge occurs solely as a result of rainfall measured at the premises that exceeds 38.4 millimetres over any consecutive 5-day period immediately prior to the discharge occurring; and

EPL ID	Pollutant	Units of Measure	Monitoring Frequency	No. of Samples for the Month	Date Sampled	Date Obtained	Min Value	Max Value	100%ile Limit	Exceedance (Yes/No)	Comments
9	TSS	mg/L	Special Frequency 1*(SD3)	0	0	-	-	-	50	-	No discharge
	Conductivity	µS/cm		0			-	-	-	-	No discharge
	Oil & Grease	mg/L		0			-	-	10	-	No discharge
	pH	pH		0			-	-	6.5-8.5	-	No discharge
	Total organic carbon	mg/L		0			-	-	-	-	No discharge
10	TSS	mg/L	Special Frequency 1*(SD4)	0	0	-	-	-	50	-	No discharge
	Conductivity	µS/cm		0			-	-	-	-	No discharge
	Oil & Grease	mg/L		0			-	-	10	-	No discharge
	pH	pH		0			-	-	6.5-8.5	-	No discharge
	Total organic carbon	mg/L		0			-	-	-	-	No discharge



## **SUNNYSIDE COAL MINE – MONTHLY MONITORING SUMMARY**

(b) all practical measures have been implemented to dewater all sediment dams within 5 days of rainfall such that they have sufficient capacity to store run off from a 38.4 millimetre, 5 day rainfall event.

\* Special Frequency 1 means the collection of samples as soon as practicable after each discharge commences and, in any case, not more than 12 hours after each discharge commences.

\*\* Special Frequency 2 means collection of samples quarterly (in the event of flow during the quarter) at a time when there is flow and as soon as practicable after each wet weather discharge from points 9 and 10 commences and in any case not more than 12 hours after each discharge commences.

Figure 1 – EPL 12957 Monitoring Locations

