



SUNNYSIDE COAL MINE – MONTHLY MONITORING SUMMARY

Site Information

EPL No: 12957

EPA Website Link: <http://www.epa.nsw.gov.au/prpoeoapp/ViewPOEOLicence.aspx?DOCID=32488&SYSUID=1&LICID=12957>

Licensee: Namoi Mining Pty Ltd

Licensee Address: Sunnyside Coal Project, 259 Coocooboonah Lane, GUNNEDAH NSW 2380

EPL Monitoring Points: See Figure 1 below

Sampling Period: January 2015

Publication Date: 25th February 2015

Table 1 - No Pollutant Limits Apply

| EPL ID | Pollutant | Units of Measure | Monitoring Frequency | No. of Samples for the Month | Date(s) Sampled | Date(s) Obtained | Min Value | Mean Value | Median Value | Max or Only Value |
|--------|-------------------------------|-------------------------|----------------------|------------------------------|-----------------|------------------|-----------|------------|--------------|-------------------|
| 1 | Particulates-Deposited Matter | g/m ² /month | Continuous | 1 | 16/01/2015 | 30/01/2015 | - | - | - | 2.0 |
| 2 | Particulates-Deposited Matter | g/m ² /month | Continuous | 1 | 16/01/2015 | 30/01/2015 | - | - | - | 1.9 |
| 4 | Particulates-Deposited Matter | g/m ² /month | Continuous | 1 | 16/01/2015 | 30/01/2015 | - | - | - | 9.6 |
| 5 | Particulates-Deposited Matter | g/m ² /month | Continuous | 1 | 16/01/2015 | 30/01/2015 | - | - | - | 3.8 |
| 6 | Particulates-Deposited Matter | g/m ² /month | Continuous | 1 | 16/01/2015 | 30/01/2015 | - | - | - | 1.2 |
| 7 | PM ₁₀ | µg/m ³ | Every 6 days | 5 | Various | 10/02/2015 | 8.4 | 11.0 | 12.9 | 13.8 |
| 9 | Conductivity | µS/cm | Special Frequency 1* | 0 | - | - | - | - | - | - |
| | Total organic carbon | mg/L | | | | | - | - | - | - |
| 10 | Conductivity | µS/cm | Special Frequency 1* | 0 | - | - | - | - | - | - |
| | Total organic carbon | mg/L | | | | | - | - | - | - |



SUNNYSIDE COAL MINE – MONTHLY MONITORING SUMMARY

| EPL ID | Pollutant | Units of Measure | Monitoring Frequency | No. of Samples for the Month | Date(s) Sampled | Date(s) Obtained | Min Value | Mean Value | Median Value | Max or Only Value |
|--------|----------------------|------------------|-----------------------|------------------------------|-----------------|------------------|-----------|------------|--------------|-------------------|
| 11 | TSS | mg/L | Special Frequency 2** | 0 | - | - | - | - | - | - |
| | Conductivity | µS/cm | | 0 | | | - | - | - | - |
| | Oil & Grease | mg/L | | 0 | | | - | - | - | - |
| | pH | pH | | 0 | | | - | - | - | - |
| | Total organic carbon | mg/L | | 0 | | | - | - | - | - |
| 12 | TSS | mg/L | Special Frequency 2** | 0 | - | - | - | - | - | - |
| | Conductivity | µS /cm | | 0 | | | - | - | - | - |
| | Oil & Grease | mg/L | | 0 | | | - | - | - | - |
| | pH | pH | | 0 | | | - | - | - | - |
| | Total organic carbon | mg/L | | 0 | | | - | - | - | - |

* Special Frequency 1 means the collection of samples as soon as practicable after each discharge commences and in any case not more than 12 hours after each discharge commences.

** Special Frequency 2 means collection of samples quarterly (in the event of flow during the quarter) at a time when there is flow and as soon as practicable after each wet weather discharge from points 9 and 10 commences and in any case not more than 12 hours after each discharge commences.

Table 2 - Pollutant Limits Apply

| EPL ID | Pollutant | Units of Measure | Monitoring Frequency | No. of Samples for the Month | Date Sampled | Date Obtained | Min Value | Max Value | 100%ile Limit | Exceedance (Yes/No) | Comments |
|--------|--------------|------------------|----------------------|------------------------------|--------------|---------------|-----------|-----------|---------------|---------------------|--------------|
| 9 | TSS | mg/L | Special Frequency 1* | 0 | - | - | - | - | 50 | - | No discharge |
| | Oil & Grease | mg/L | | 0 | | | - | - | 10 | - | No discharge |
| | pH | pH | | 0 | | | - | - | 6.5-8.5 | - | No discharge |
| 10 | TSS | mg/L | Special Frequency 1* | 0 | - | - | - | - | 50 | - | No discharge |
| | Oil & Grease | mg/L | | 0 | | | - | - | 10 | - | No discharge |
| | pH | pH | | 0 | | | - | - | 6.5-8.5 | - | No discharge |



SUNNYSIDE COAL MINE – MONTHLY MONITORING SUMMARY

Table 3 – Monitoring (Blasts – Limits Apply)

| Location | Parameter | Units of Measure | Frequency | No. of Blasts for the Month | Average Value | Max or Only Value | 100%ile Limit | (Potential) Non-compliance/breach |
|----------|-----------------|------------------|-------------|-----------------------------|---------------|-------------------|---------------|-----------------------------------|
| R1 | Blast Noise | dB (Lin Peak) | Every Blast | 0 | - | - | - | - |
| | Blast Vibration | mm/s | | | - | - | - | - |
| R2 | Blast Noise | dB (Lin Peak) | Every Blast | 0 | - | - | - | - |
| | Blast Vibration | mm/s | | | - | - | - | - |
| R4 | Blast Noise | dB (Lin Peak) | Every Blast | 0 | - | - | - | - |
| | Blast Vibration | mm/s | | | - | - | - | - |
| R6 | Blast Noise | dB (Lin Peak) | Every Blast | 0 | - | - | - | - |
| | Blast Vibration | mm/s | | | - | - | - | - |

SUNNYSIDE COAL MINE – MONTHLY MONITORING SUMMARY

Figure 1 – EPL 12957 Monitoring Locations





SUNNYSIDE COAL MINE – MONTHLY MONITORING SUMMARY

Site Information

EPL No: 12957

EPA Website Link: <http://epa.nsw.gov.au/prpoeoapp/ViewPOEOLicence.aspx?DOCID=40292&SYSUID=1&LICID=12957>

Licensee: Namoi Mining Pty Ltd

Licensee Address: Sunnyside Coal Project, 259 Coocooboonah Lane, GUNNEDAH NSW 2380

EPL Monitoring Points: See Figure 1 below

Sampling Period: February 2015

Publication Date: 24th April 2015

Table 1 - No Pollutant Limits Apply

| EPL ID | Pollutant | Units of Measure | Monitoring Frequency | No. of Samples for the Month | Date(s) Sampled | Date(s) Obtained | Min Value | Mean Value | Median Value | Max or Only Value |
|--------|-------------------------------|-------------------------|----------------------|------------------------------|-----------------|------------------|-----------|------------|--------------|-------------------|
| 1 | Particulates-Deposited Matter | g/m ² /month | Continuous | 1 | 16/2/15 | 23/2/15 | - | - | - | 2.3 |
| 2 | Particulates-Deposited Matter | g/m ² /month | Continuous | 1 | 16/2/15 | 23/2/15 | - | - | - | 0.6 |
| 4 | Particulates-Deposited Matter | g/m ² /month | Continuous | 1 | 16/2/15 | 23/2/15 | - | - | - | 4.9 |
| 5 | Particulates-Deposited Matter | g/m ² /month | Continuous | 1 | 16/2/15 | 23/2/15 | - | - | - | 2.8 |
| 6 | Particulates-Deposited Matter | g/m ² /month | Continuous | 1 | 16/2/15 | 23/2/15 | - | - | - | 1.4 |
| 7 | PM ₁₀ | µg/m ³ | Every 6 days | 5 | Various | 10/3/15 | 4.2 | 9.1 | 10.1 | 11.4 |
| 9 | Conductivity | µS/cm | Special Frequency 1* | 0 | - | - | - | - | - | - |
| | Total organic carbon | mg/L | | | | | - | - | - | - |
| 10 | Conductivity | µS/cm | Special Frequency 1* | 0 | - | - | - | - | - | - |
| | Total organic carbon | mg/L | | | | | - | - | - | - |



SUNNYSIDE COAL MINE – MONTHLY MONITORING SUMMARY

| EPL ID | Pollutant | Units of Measure | Monitoring Frequency | No. of Samples for the Month | Date(s) Sampled | Date(s) Obtained | Min Value | Mean Value | Median Value | Max or Only Value |
|--------|----------------------|------------------|-----------------------|------------------------------|-----------------|------------------|-----------|------------|--------------|-------------------|
| 11 | TSS | mg/L | Special Frequency 2** | 0 | - | - | - | - | - | - |
| | Conductivity | µS/cm | | 0 | | | - | - | - | - |
| | Oil & Grease | mg/L | | 0 | | | - | - | - | - |
| | pH | pH | | 0 | | | - | - | - | - |
| | Total organic carbon | mg/L | | 0 | | | - | - | - | - |
| 12 | TSS | mg/L | Special Frequency 2** | 0 | - | - | - | - | - | - |
| | Conductivity | µS/cm | | 0 | | | - | - | - | - |
| | Oil & Grease | mg/L | | 0 | | | - | - | - | - |
| | pH | pH | | 0 | | | - | - | - | - |
| | Total organic carbon | mg/L | | 0 | | | - | - | - | - |

* Special Frequency 1 means the collection of samples as soon as practicable after each discharge commences and in any case not more than 12 hours after each discharge commences.

** Special Frequency 2 means collection of samples quarterly (in the event of flow during the quarter) at a time when there is flow and as soon as practicable after each wet weather discharge from points 9 and 10 commences and in any case not more than 12 hours after each discharge commences.

Table 2 - Pollutant Limits Apply

| EPL ID | Pollutant | Units of Measure | Monitoring Frequency | No. of Samples for the Month | Date Sampled | Date Obtained | Min Value | Max Value | 100%ile Limit | Exceedance (Yes/No) | Comments |
|--------|--------------|------------------|----------------------|------------------------------|--------------|---------------|-----------|-----------|---------------|---------------------|--------------|
| 9 | TSS | mg/L | Special Frequency 1* | 0 | - | - | - | - | 50 | - | No discharge |
| | Oil & Grease | mg/L | | 0 | | | - | - | 10 | - | No discharge |
| | pH | pH | | 0 | | | - | - | 6.5-8.5 | - | No discharge |
| 10 | TSS | mg/L | Special Frequency 1* | 0 | - | - | - | - | 50 | - | No discharge |
| | Oil & Grease | mg/L | | 0 | | | - | - | 10 | - | No discharge |
| | pH | pH | | 0 | | | - | - | 6.5-8.5 | - | No discharge |



SUNNYSIDE COAL MINE – MONTHLY MONITORING SUMMARY

Table 3 – Monitoring (Blasts – Limits Apply)

| Location | Parameter | Units of Measure | Frequency | No. of Blasts for the Month | Average Value | Max or Only Value | 100%ile Limit | (Potential) Non-compliance/breach |
|----------|-----------------|------------------|-------------|-----------------------------|---------------|-------------------|---------------|-----------------------------------|
| R1 | Blast Noise | dB (Lin Peak) | Every Blast | 0 | - | - | - | - |
| | Blast Vibration | mm/s | | | - | - | - | - |
| R2 | Blast Noise | dB (Lin Peak) | Every Blast | 0 | - | - | - | - |
| | Blast Vibration | mm/s | | | - | - | - | - |
| R4 | Blast Noise | dB (Lin Peak) | Every Blast | 0 | - | - | - | - |
| | Blast Vibration | mm/s | | | - | - | - | - |
| R6 | Blast Noise | dB (Lin Peak) | Every Blast | 0 | - | - | - | - |
| | Blast Vibration | mm/s | | | - | - | - | - |

SUNNYSIDE COAL MINE – MONTHLY MONITORING SUMMARY

Figure 1 – EPL 12957 Monitoring Locations





SUNNYSIDE COAL MINE – MONTHLY MONITORING SUMMARY

Site Information

EPL No: 12957

EPA Website Link: <http://epa.nsw.gov.au/prpoeoapp/ViewPOEOLicence.aspx?DOCID=40292&SYSUID=1&LICID=12957>

Licensee: Namoi Mining Pty Ltd

Licensee Address: Sunnyside Coal Project, 259 Coocooboonah Lane, GUNNEDAH NSW 2380

EPL Monitoring Points: See Figure 1 below

Sampling Period: March 2015

Publication Date: 24th April 2015

Table 1 - No Pollutant Limits Apply

| EPL ID | Pollutant | Units of Measure | Monitoring Frequency | No. of Samples for the Month | Date(s) Sampled | Date(s) Obtained | Min Value | Mean Value | Median Value | Max or Only Value |
|--------|-------------------------------|-------------------------|----------------------|------------------------------|-----------------|------------------|-----------|------------|--------------|-------------------|
| 1 | Particulates-Deposited Matter | g/m ² /month | Continuous | 1 | 17/3/15 | 25/3/15 | - | - | - | 1.3 |
| 2 | Particulates-Deposited Matter | g/m ² /month | Continuous | 1 | 17/3/15 | 25/3/15 | - | - | - | 2.4 |
| 4 | Particulates-Deposited Matter | g/m ² /month | Continuous | 1 | 17/3/15 | 25/3/15 | - | - | - | 4.4 |
| 5 | Particulates-Deposited Matter | g/m ² /month | Continuous | 1 | 17/3/15 | 25/3/15 | - | - | - | 0.9 |
| 6 | Particulates-Deposited Matter | g/m ² /month | Continuous | 1 | 17/3/15 | 25/3/15 | - | - | - | 2.0 |
| 7 | PM ₁₀ | µg/m ³ | Every 6 days | 5 | Various | 13/4/15 | 8.8 | 17.8 | 17.2 | 29.7 |
| 9 | Conductivity | µS/cm | Special Frequency 1* | 0 | - | - | - | - | - | - |
| | Total organic carbon | mg/L | | | | | - | - | - | - |
| 10 | Conductivity | µS/cm | Special Frequency 1* | 0 | - | - | - | - | - | - |
| | Total organic carbon | mg/L | | | | | - | - | - | - |



SUNNYSIDE COAL MINE – MONTHLY MONITORING SUMMARY

| EPL ID | Pollutant | Units of Measure | Monitoring Frequency | No. of Samples for the Month | Date(s) Sampled | Date(s) Obtained | Min Value | Mean Value | Median Value | Max or Only Value |
|--------|----------------------|------------------|-----------------------|------------------------------|-----------------|------------------|-----------|------------|--------------|-------------------|
| 11 | TSS | mg/L | Special Frequency 2** | 0 | - | - | - | - | - | - |
| | Conductivity | µS/cm | | 0 | | | - | - | - | - |
| | Oil & Grease | mg/L | | 0 | | | - | - | - | - |
| | pH | pH | | 0 | | | - | - | - | - |
| | Total organic carbon | mg/L | | 0 | | | - | - | - | - |
| 12 | TSS | mg/L | Special Frequency 2** | 0 | - | - | - | - | - | - |
| | Conductivity | µS/cm | | 0 | | | - | - | - | - |
| | Oil & Grease | mg/L | | 0 | | | - | - | - | - |
| | pH | pH | | 0 | | | - | - | - | - |
| | Total organic carbon | mg/L | | 0 | | | - | - | - | - |

* Special Frequency 1 means the collection of samples as soon as practicable after each discharge commences and in any case not more than 12 hours after each discharge commences.

** Special Frequency 2 means collection of samples quarterly (in the event of flow during the quarter) at a time when there is flow and as soon as practicable after each wet weather discharge from points 9 and 10 commences and in any case not more than 12 hours after each discharge commences.

Table 2 - Pollutant Limits Apply

| EPL ID | Pollutant | Units of Measure | Monitoring Frequency | No. of Samples for the Month | Date Sampled | Date Obtained | Min Value | Max Value | 100%ile Limit | Exceedance (Yes/No) | Comments |
|--------|--------------|------------------|----------------------|------------------------------|--------------|---------------|-----------|-----------|---------------|---------------------|--------------|
| 9 | TSS | mg/L | Special Frequency 1* | 0 | - | - | - | - | 50 | - | No discharge |
| | Oil & Grease | mg/L | | 0 | | | - | - | 10 | - | No discharge |
| | pH | pH | | 0 | | | - | - | 6.5-8.5 | - | No discharge |
| 10 | TSS | mg/L | Special Frequency 1* | 0 | - | - | - | - | 50 | - | No discharge |
| | Oil & Grease | mg/L | | 0 | | | - | - | 10 | - | No discharge |
| | pH | pH | | 0 | | | - | - | 6.5-8.5 | - | No discharge |



SUNNYSIDE COAL MINE – MONTHLY MONITORING SUMMARY

Table 3 – Monitoring (Blasts – Limits Apply)

| Location | Parameter | Units of Measure | Frequency | No. of Blasts for the Month | Average Value | Max or Only Value | 100%ile Limit | (Potential) Non-compliance/breach |
|----------|-----------------|------------------|-------------|-----------------------------|---------------|-------------------|---------------|-----------------------------------|
| R1 | Blast Noise | dB (Lin Peak) | Every Blast | 0 | - | - | - | - |
| | Blast Vibration | mm/s | | | - | - | - | - |
| R2 | Blast Noise | dB (Lin Peak) | Every Blast | 0 | - | - | - | - |
| | Blast Vibration | mm/s | | | - | - | - | - |
| R4 | Blast Noise | dB (Lin Peak) | Every Blast | 0 | - | - | - | - |
| | Blast Vibration | mm/s | | | - | - | - | - |
| R6 | Blast Noise | dB (Lin Peak) | Every Blast | 0 | - | - | - | - |
| | Blast Vibration | mm/s | | | - | - | - | - |

SUNNYSIDE COAL MINE – MONTHLY MONITORING SUMMARY

Figure 1 – EPL 12957 Monitoring Locations





SUNNYSIDE COAL MINE – MONTHLY MONITORING SUMMARY

Site Information

EPL No: 12957

EPA Website Link: <http://epa.nsw.gov.au/prpoeoapp/ViewPOEOLicence.aspx?DOCID=40292&SYSUID=1&LICID=12957>

Licensee: Namoi Mining Pty Ltd

Licensee Address: Sunnyside Coal Project, 259 Coocooboona Lane, GUNNEDAH NSW 2380

EPL Monitoring Points: See Figure 1 below

Sampling Period: April 2015

Publication Date: 19th May 2015

Table 1 - No Pollutant Limits Apply

| EPL ID | Pollutant | Units of Measure | Monitoring Frequency | No. of Samples for the Month | Date(s) Sampled | Date(s) Obtained | Min Value | Mean Value | Median Value | Max or Only Value |
|--------|-------------------------------|-------------------------|----------------------|------------------------------|-----------------|------------------|-----------|------------|--------------|-------------------|
| 1 | Particulates-Deposited Matter | g/m ² /month | Continuous | 1 | 17/04/2015 | 19/05/2015 | - | - | - | 1.4 |
| 2 | Particulates-Deposited Matter | g/m ² /month | Continuous | 1 | 17/04/2015 | 19/05/2015 | - | - | - | 1.4 |
| 4 | Particulates-Deposited Matter | g/m ² /month | Continuous | 1 | 17/04/2015 | 19/05/2015 | - | - | - | 4.7 |
| 5 | Particulates-Deposited Matter | g/m ² /month | Continuous | 1 | 17/04/2015 | 19/05/2015 | - | - | - | 1.3 |
| 6 | Particulates-Deposited Matter | g/m ² /month | Continuous | 1 | 17/04/2015 | 19/05/2015 | - | - | - | 1.7 |
| 7 | PM ₁₀ | µg/m ³ | Every 6 days | 5 | Various | 12/05/2015 | 2.1 | 7.5 | 5.1 | 21.8 |
| 9 | Conductivity | µS/cm | Special Frequency 1* | 0 | - | - | - | - | - | - |
| | Total organic carbon | mg/L | | | | | - | - | - | - |
| 10 | Conductivity | µS/cm | Special Frequency 1* | 0 | - | - | - | - | - | - |
| | Total organic carbon | mg/L | | | | | - | - | - | - |

SUNNYSIDE COAL MINE – MONTHLY MONITORING SUMMARY

| EPL ID | Pollutant | Units of Measure | Monitoring Frequency | No. of Samples for the Month | Date(s) Sampled | Date(s) Obtained | Min Value | Mean Value | Median Value | Max or Only Value |
|--------|----------------------|------------------|-----------------------|------------------------------|-----------------|------------------|-----------|------------|--------------|-------------------|
| 11 | TSS | mg/L | Special Frequency 2** | 0 | 21/04/2015 | 28/04/2015 | - | - | - | 12 |
| | Conductivity | µS/cm | | 0 | | | - | - | - | 95 |
| | Oil & Grease | mg/L | | 0 | | | - | - | - | <5 |
| | pH | pH | | 0 | | | - | - | - | 7.46 |
| | Total organic carbon | mg/L | | 0 | | | - | - | - | 8 |
| 12 | TSS | mg/L | Special Frequency 2** | 0 | 21/04/2015 | 28/04/2015 | - | - | - | 48 |
| | Conductivity | µS /cm | | 0 | | | - | - | - | 119 |
| | Oil & Grease | mg/L | | 0 | | | - | - | - | <5 |
| | pH | pH | | 0 | | | - | - | - | 7.80 |
| | Total organic carbon | mg/L | | 0 | | | - | - | - | 10 |

Table 2 - Pollutant Limits Apply

| EPL ID | Pollutant | Units of Measure | Monitoring Frequency | No. of Samples for the Month | Date Sampled | Date Obtained | Min Value | Max Value | 100%ile Limit | Exceedance (Yes/No) | Comments |
|--------|--------------|------------------|----------------------|------------------------------|--------------|---------------|-----------|-----------|---------------|---------------------|--------------|
| 9 | TSS | mg/L | Special Frequency 1* | 0 | - | - | - | - | 50 | - | No discharge |
| | Oil & Grease | mg/L | | 0 | | | - | - | 10 | - | No discharge |
| | pH | pH | | 0 | | | - | - | 6.5-8.5 | - | No discharge |
| 10 | TSS | mg/L | Special Frequency 1* | 0 | - | - | - | - | 50 | - | No discharge |
| | Oil & Grease | mg/L | | 0 | | | - | - | 10 | - | No discharge |
| | pH | pH | | 0 | | | - | - | 6.5-8.5 | - | No discharge |

* Special Frequency 1 means the collection of samples as soon as practicable after each discharge commences and in any case not more than 12 hours after each discharge commences.

** Special Frequency 2 means collection of samples quarterly (in the event of flow during the quarter) at a time when there is flow and as soon as practicable after each wet weather discharge from points 9 and 10 commences and in any case not more than 12 hours after each discharge commences.



SUNNYSIDE COAL MINE – MONTHLY MONITORING SUMMARY

Table 3 – Monitoring (Blasts – Limits Apply)

| Location | Parameter | Units of Measure | Frequency | No. of Blasts for the Month | Average Value | Max or Only Value | 100%ile Limit | (Potential) Non-compliance/breach |
|-----------------|------------------|-------------------------|------------------|------------------------------------|----------------------|--------------------------|----------------------|--|
| R1 | Blast Noise | dB (Lin Peak) | Every Blast | 0 | - | - | - | - |
| | Blast Vibration | mm/s | | | - | - | - | - |
| R2 | Blast Noise | dB (Lin Peak) | Every Blast | 0 | - | - | - | - |
| | Blast Vibration | mm/s | | | - | - | - | - |
| R4 | Blast Noise | dB (Lin Peak) | Every Blast | 0 | - | - | - | - |
| | Blast Vibration | mm/s | | | - | - | - | - |
| R6 | Blast Noise | dB (Lin Peak) | Every Blast | 0 | - | - | - | - |
| | Blast Vibration | mm/s | | | - | - | - | - |

SUNNYSIDE COAL MINE – MONTHLY MONITORING SUMMARY

Figure 1 – EPL 12957 Monitoring Locations





SUNNYSIDE COAL MINE – MONTHLY MONITORING SUMMARY

Site Information

EPL No: 12957

EPA Website Link: <http://epa.nsw.gov.au/prpoeoapp/ViewPOEOLicence.aspx?DOCID=40292&SYSUID=1&LICID=12957>

Licensee: Namoi Mining Pty Ltd

Licensee Address: Sunnyside Coal Project, 259 Coocooboona Lane, GUNNEDAH NSW 2380

EPL Monitoring Points: See Figure 1 below

Sampling Period: May 2015

Publication Date: 23/06/2015

Table 1 - No Pollutant Limits Apply

| EPL ID | Pollutant | Units of Measure | Monitoring Frequency | No. of Samples for the Month | Date(s) Sampled | Date(s) Obtained | Min Value | Mean Value | Median Value | Max or Only Value |
|--------|-------------------------------|-------------------------|----------------------|------------------------------|-----------------|------------------|-----------|------------|--------------|-------------------|
| 1 | Particulates-Deposited Matter | g/m ² /month | Continuous | 1 | 18/05/2015 | 26/05/2015 | - | - | - | 0.4 |
| 2 | Particulates-Deposited Matter | g/m ² /month | Continuous | 1 | 18/05/2015 | 26/05/2015 | - | - | - | 0.2 |
| 4 | Particulates-Deposited Matter | g/m ² /month | Continuous | 1 | 18/05/2015 | 26/05/2015 | - | - | - | 1.2 |
| 5 | Particulates-Deposited Matter | g/m ² /month | Continuous | 1 | 18/05/2015 | 26/05/2015 | - | - | - | 1.5 |
| 6 | Particulates-Deposited Matter | g/m ² /month | Continuous | 1 | 18/05/2015 | 26/05/2015 | - | - | - | 1.0 |
| 7 | PM ₁₀ | µg/m ³ | Every 6 days | 5 | Various | 16/06/2015 | 4.0 | 7.1 | 6.8 | 10.5 |
| 9 | Conductivity | µS/cm | Special Frequency 1* | - | - | - | - | - | - | - |
| | Total organic carbon | mg/L | | | | | - | - | - | - |
| 10 | Conductivity | µS/cm | Special Frequency 1* | - | - | - | - | - | - | - |
| | Total organic carbon | mg/L | | | | | - | - | - | - |

SUNNYSIDE COAL MINE – MONTHLY MONITORING SUMMARY

| EPL ID | Pollutant | Units of Measure | Monitoring Frequency | No. of Samples for the Month | Date(s) Sampled | Date(s) Obtained | Min Value | Mean Value | Median Value | Max or Only Value |
|--------|----------------------|------------------|-----------------------|------------------------------|-----------------|------------------|-----------|------------|--------------|-------------------|
| 11 | TSS | mg/L | Special Frequency 2** | 0 | - | - | - | - | - | - |
| | Conductivity | µS/cm | | 0 | | | - | - | - | - |
| | Oil & Grease | mg/L | | 0 | | | - | - | - | - |
| | pH | pH | | 0 | | | - | - | - | - |
| | Total organic carbon | mg/L | | 0 | | | - | - | - | - |
| 12 | TSS | mg/L | Special Frequency 2** | 0 | - | - | - | - | - | - |
| | Conductivity | µS /cm | | 0 | | | - | - | - | - |
| | Oil & Grease | mg/L | | 0 | | | - | - | - | - |
| | pH | pH | | 0 | | | - | - | - | - |
| | Total organic carbon | mg/L | | 0 | | | - | - | - | - |

Table 2 - Pollutant Limits Apply

| EPL ID | Pollutant | Units of Measure | Monitoring Frequency | No. of Samples for the Month | Date Sampled | Date Obtained | Min Value | Max Value | 100%ile Limit | Exceedance (Yes/No) | Comments |
|--------|--------------|------------------|----------------------|------------------------------|--------------|---------------|-----------|-----------|---------------|---------------------|--------------|
| 9 | TSS | mg/L | Special Frequency 1* | 0 | - | - | - | - | 50 | - | No discharge |
| | Oil & Grease | mg/L | | 0 | | | - | - | 10 | - | No discharge |
| | pH | pH | | 0 | | | - | - | 6.5-8.5 | - | No discharge |
| 10 | TSS | mg/L | Special Frequency 1* | 0 | - | - | - | - | 50 | - | No discharge |
| | Oil & Grease | mg/L | | 0 | | | - | - | 10 | - | No discharge |
| | pH | pH | | 0 | | | - | - | 6.5-8.5 | - | No discharge |

* Special Frequency 1 means the collection of samples as soon as practicable after each discharge commences and in any case not more than 12 hours after each discharge commences.

** Special Frequency 2 means collection of samples quarterly (in the event of flow during the quarter) at a time when there is flow and as soon as practicable after each wet weather discharge from points 9 and 10 commences and in any case not more than 12 hours after each discharge commences.



SUNNYSIDE COAL MINE – MONTHLY MONITORING SUMMARY

Table 3 – Monitoring (Blasts – Limits Apply)

| Location | Parameter | Units of Measure | Frequency | No. of Blasts for the Month | Average Value | Max or Only Value | 100%ile Limit | (Potential) Non-compliance/breach |
|-----------------|------------------|-------------------------|------------------|------------------------------------|----------------------|--------------------------|----------------------|--|
| R1 | Blast Noise | dB (Lin Peak) | Every Blast | 0 | - | - | - | - |
| | Blast Vibration | mm/s | | | - | - | - | - |
| R2 | Blast Noise | dB (Lin Peak) | Every Blast | 0 | - | - | - | - |
| | Blast Vibration | mm/s | | | - | - | - | - |
| R4 | Blast Noise | dB (Lin Peak) | Every Blast | 0 | - | - | - | - |
| | Blast Vibration | mm/s | | | - | - | - | - |
| R6 | Blast Noise | dB (Lin Peak) | Every Blast | 0 | - | - | - | - |
| | Blast Vibration | mm/s | | | - | - | - | - |

SUNNYSIDE COAL MINE – MONTHLY MONITORING SUMMARY

Figure 1 – EPL 12957 Monitoring Locations





SUNNYSIDE COAL MINE – MONTHLY MONITORING SUMMARY

Site Information

EPL No: 12957

EPA Website Link: <http://epa.nsw.gov.au/prpoeoapp/ViewPOEOLicence.aspx?DOCID=40292&SYSUID=1&LICID=12957>

Licensee: Namoi Mining Pty Ltd

Licensee Address: Sunnyside Coal Project, 259 Coocooboona Lane, GUNNEDAH NSW 2380

EPL Monitoring Points: See Figure 1 below

Sampling Period: June 2015

Publication Date: 21st July 2015

Table 1 - No Pollutant Limits Apply

| EPL ID | Pollutant | Units of Measure | Monitoring Frequency | No. of Samples for the Month | Date(s) Sampled | Date(s) Obtained | Min Value | Mean Value | Median Value | Max or Only Value |
|--------|-------------------------------|-------------------------|----------------------|------------------------------|-----------------|------------------|-----------|------------|--------------|-------------------|
| 1 | Particulates-Deposited Matter | g/m ² /month | Continuous | 1 | 17/06/2015 | 22/06/2015 | - | - | - | 0.2 |
| 2 | Particulates-Deposited Matter | g/m ² /month | Continuous | 1 | 17/06/2015 | 22/06/2015 | - | - | - | 2.3 |
| 4 | Particulates-Deposited Matter | g/m ² /month | Continuous | 1 | 17/06/2015 | 22/06/2015 | - | - | - | 4.0 |
| 5 | Particulates-Deposited Matter | g/m ² /month | Continuous | 1 | 17/06/2015 | 22/06/2015 | - | - | - | <0.1 |
| 6 | Particulates-Deposited Matter | g/m ² /month | Continuous | 1 | 17/06/2015 | 22/06/2015 | - | - | - | 1.2 |
| 7 | PM ₁₀ | µg/m ³ | Every 6 days | 5 | Various | 09/07/2015 | 2.6 | 4.3 | 3.5 | 5.8 |
| 9 | Conductivity | µS/cm | Special Frequency 1* | - | - | - | - | - | - | - |
| | Total organic carbon | mg/L | | | | | - | - | - | - |
| 10 | Conductivity | µS/cm | Special Frequency 1* | - | - | - | - | - | - | - |
| | Total organic carbon | mg/L | | | | | - | - | - | - |

SUNNYSIDE COAL MINE – MONTHLY MONITORING SUMMARY

| EPL ID | Pollutant | Units of Measure | Monitoring Frequency | No. of Samples for the Month | Date(s) Sampled | Date(s) Obtained | Min Value | Mean Value | Median Value | Max or Only Value |
|--------|----------------------|------------------|-----------------------|------------------------------|-----------------|------------------|-----------|------------|--------------|-------------------|
| 11 | TSS | mg/L | Special Frequency 2** | 0 | - | - | - | - | - | - |
| | Conductivity | µS/cm | | 0 | | | - | - | - | - |
| | Oil & Grease | mg/L | | 0 | | | - | - | - | - |
| | pH | pH | | 0 | | | - | - | - | - |
| | Total organic carbon | mg/L | | 0 | | | - | - | - | - |
| 12 | TSS | mg/L | Special Frequency 2** | 0 | - | - | - | - | - | - |
| | Conductivity | µS /cm | | 0 | | | - | - | - | - |
| | Oil & Grease | mg/L | | 0 | | | - | - | - | - |
| | pH | pH | | 0 | | | - | - | - | - |
| | Total organic carbon | mg/L | | 0 | | | - | - | - | - |

Table 2 - Pollutant Limits Apply

| EPL ID | Pollutant | Units of Measure | Monitoring Frequency | No. of Samples for the Month | Date Sampled | Date Obtained | Min Value | Max Value | 100%ile Limit | Exceedance (Yes/No) | Comments |
|--------|--------------|------------------|----------------------|------------------------------|--------------|---------------|-----------|-----------|---------------|---------------------|--------------|
| 9 | TSS | mg/L | Special Frequency 1* | 0 | - | - | - | - | 50 | - | No discharge |
| | Oil & Grease | mg/L | | 0 | | | - | - | 10 | - | No discharge |
| | pH | pH | | 0 | | | - | - | 6.5-8.5 | - | No discharge |
| 10 | TSS | mg/L | Special Frequency 1* | 0 | - | - | - | - | 50 | - | No discharge |
| | Oil & Grease | mg/L | | 0 | | | - | - | 10 | - | No discharge |
| | pH | pH | | 0 | | | - | - | 6.5-8.5 | - | No discharge |

* Special Frequency 1 means the collection of samples as soon as practicable after each discharge commences and in any case not more than 12 hours after each discharge commences.

** Special Frequency 2 means collection of samples quarterly (in the event of flow during the quarter) at a time when there is flow and as soon as practicable after each wet weather discharge from points 9 and 10 commences and in any case not more than 12 hours after each discharge commences.



SUNNYSIDE COAL MINE – MONTHLY MONITORING SUMMARY

Table 3 – Monitoring (Blasts – Limits Apply)

| Location | Parameter | Units of Measure | Frequency | No. of Blasts for the Month | Average Value | Max or Only Value | 100%ile Limit | (Potential) Non-compliance/breach |
|----------|-----------------|------------------|-------------|-----------------------------|---------------|-------------------|---------------|-----------------------------------|
| R1 | Blast Noise | dB (Lin Peak) | Every Blast | 0 | - | - | - | - |
| | Blast Vibration | mm/s | | | - | - | - | - |
| R2 | Blast Noise | dB (Lin Peak) | Every Blast | 0 | - | - | - | - |
| | Blast Vibration | mm/s | | | - | - | - | - |
| R4 | Blast Noise | dB (Lin Peak) | Every Blast | 0 | - | - | - | - |
| | Blast Vibration | mm/s | | | - | - | - | - |
| R6 | Blast Noise | dB (Lin Peak) | Every Blast | 0 | - | - | - | - |
| | Blast Vibration | mm/s | | | - | - | - | - |

SUNNYSIDE COAL MINE – MONTHLY MONITORING SUMMARY

Figure 1 – EPL 12957 Monitoring Locations





SUNNYSIDE COAL MINE – MONTHLY MONITORING SUMMARY

Site Information

EPL No: 12957

EPA Website Link: <http://epa.nsw.gov.au/prpoeoapp/ViewPOEOLicence.aspx?DOCID=40292&SYSUID=1&LICID=12957>

Licensee: Namoi Mining Pty Ltd

Licensee Address: Sunnyside Coal Project, 259 Coocooboona Lane, GUNNEDAH NSW 2380

EPL Monitoring Points: See Figure 1 below

Sampling Period: July 2015

Publication Date: 13th August 2015

Table 1 - No Pollutant Limits Apply

| EPL ID | Pollutant | Units of Measure | Monitoring Frequency | No. of Samples for the Month | Date(s) Sampled | Date(s) Obtained | Min Value | Mean Value | Median Value | Max or Only Value |
|--------|-------------------------------|-------------------------|----------------------|------------------------------|-----------------|------------------|-----------|------------|--------------|-------------------|
| 1 | Particulates-Deposited Matter | g/m ² /month | Continuous | 1 | 16-07-15 | 22-07-15 | - | - | - | 0.4 |
| 2 | Particulates-Deposited Matter | g/m ² /month | Continuous | 1 | 16-07-15 | 22-07-15 | - | - | - | 1.0 |
| 4 | Particulates-Deposited Matter | g/m ² /month | Continuous | 1 | 16-07-15 | 22-07-15 | - | - | - | 0.9 |
| 5 | Particulates-Deposited Matter | g/m ² /month | Continuous | 1 | 16-07-15 | 22-07-15 | - | - | - | 0.4 |
| 6 | Particulates-Deposited Matter | g/m ² /month | Continuous | 1 | 16-07-15 | 22-07-15 | - | - | - | 1.0 |
| 7 | PM ₁₀ | µg/m ³ | Every 6 days | 5 | Various | 12-08-15 | 1.5 | 5.3 | 6.1 | 7.0 |
| 9 | Conductivity | µS/cm | Special Frequency 1* | - | - | - | - | - | - | - |
| | Total organic carbon | mg/L | | | | | - | - | - | - |
| 10 | Conductivity | µS/cm | Special Frequency 1* | - | - | - | - | - | - | - |
| | Total organic carbon | mg/L | | | | | - | - | - | - |

SUNNYSIDE COAL MINE – MONTHLY MONITORING SUMMARY

| EPL ID | Pollutant | Units of Measure | Monitoring Frequency | No. of Samples for the Month | Date(s) Sampled | Date(s) Obtained | Min Value | Mean Value | Median Value | Max or Only Value |
|--------|----------------------|------------------|-----------------------|------------------------------|-----------------|------------------|-----------|------------|--------------|-------------------|
| 11 | TSS | mg/L | Special Frequency 2** | 0 | - | - | - | - | - | - |
| | Conductivity | µS/cm | | 0 | | | - | - | - | - |
| | Oil & Grease | mg/L | | 0 | | | - | - | - | - |
| | pH | pH | | 0 | | | - | - | - | - |
| | Total organic carbon | mg/L | | 0 | | | - | - | - | - |
| 12 | TSS | mg/L | Special Frequency 2** | 0 | - | - | - | - | - | - |
| | Conductivity | µS /cm | | 0 | | | - | - | - | - |
| | Oil & Grease | mg/L | | 0 | | | - | - | - | - |
| | pH | pH | | 0 | | | - | - | - | - |
| | Total organic carbon | mg/L | | 0 | | | - | - | - | - |

Table 2 - Pollutant Limits Apply

| EPL ID | Pollutant | Units of Measure | Monitoring Frequency | No. of Samples for the Month | Date Sampled | Date Obtained | Min Value | Max Value | 100%ile Limit | Exceedance (Yes/No) | Comments |
|--------|--------------|------------------|----------------------|------------------------------|--------------|---------------|-----------|-----------|---------------|---------------------|--------------|
| 9 | TSS | mg/L | Special Frequency 1* | 0 | - | - | - | - | 50 | - | No discharge |
| | Oil & Grease | mg/L | | 0 | | | - | - | 10 | - | No discharge |
| | pH | pH | | 0 | | | - | - | 6.5-8.5 | - | No discharge |
| 10 | TSS | mg/L | Special Frequency 1* | 0 | - | - | - | - | 50 | - | No discharge |
| | Oil & Grease | mg/L | | 0 | | | - | - | 10 | - | No discharge |
| | pH | pH | | 0 | | | - | - | 6.5-8.5 | - | No discharge |

* Special Frequency 1 means the collection of samples as soon as practicable after each discharge commences and in any case not more than 12 hours after each discharge commences.

** Special Frequency 2 means collection of samples quarterly (in the event of flow during the quarter) at a time when there is flow and as soon as practicable after each wet weather discharge from points 9 and 10 commences and in any case not more than 12 hours after each discharge commences.



SUNNYSIDE COAL MINE – MONTHLY MONITORING SUMMARY

Table 3 – Monitoring (Blasts – Limits Apply)

| Location | Parameter | Units of Measure | Frequency | No. of Blasts for the Month | Average Value | Max or Only Value | 100%ile Limit | (Potential) Non-compliance/breach |
|----------|-----------------|------------------|-------------|-----------------------------|---------------|-------------------|---------------|-----------------------------------|
| R1 | Blast Noise | dB (Lin Peak) | Every Blast | 0 | - | - | - | - |
| | Blast Vibration | mm/s | | | - | - | - | - |
| R2 | Blast Noise | dB (Lin Peak) | Every Blast | 0 | - | - | - | - |
| | Blast Vibration | mm/s | | | - | - | - | - |
| R4 | Blast Noise | dB (Lin Peak) | Every Blast | 0 | - | - | - | - |
| | Blast Vibration | mm/s | | | - | - | - | - |
| R6 | Blast Noise | dB (Lin Peak) | Every Blast | 0 | - | - | - | - |
| | Blast Vibration | mm/s | | | - | - | - | - |

SUNNYSIDE COAL MINE – MONTHLY MONITORING SUMMARY

Figure 1 – EPL 12957 Monitoring Locations





SUNNYSIDE COAL MINE – MONTHLY MONITORING SUMMARY

Site Information

EPL No: 12957

EPA Website Link: <http://epa.nsw.gov.au/prpoeoapp/ViewPOEOLicence.aspx?DOCID=40292&SYSUID=1&LICID=12957>

Licensee: Namoi Mining Pty Ltd

Licensee Address: Sunnyside Coal Project, 259 Coocooboona Lane, GUNNEDAH NSW 2380

EPL Monitoring Points: See Figure 1 below

Sampling Period: August 2015

Publication Date: 21st September 2015

Table 1 - No Pollutant Limits Apply

| EPL ID | Pollutant | Units of Measure | Monitoring Frequency | No. of Samples for the Month | Date(s) Sampled | Date(s) Obtained | Min Value | Mean Value | Median Value | Max or Only Value |
|--------|-------------------------------|-------------------------|----------------------|------------------------------|-----------------|------------------|-----------|------------|--------------|-------------------|
| 1 | Particulates-Deposited Matter | g/m ² /month | Continuous | 1 | 17-08-15 | 20-08-15 | - | - | - | <0.1 |
| 2 | Particulates-Deposited Matter | g/m ² /month | Continuous | 1 | 17-08-15 | 20-08-15 | - | - | - | 0.6 |
| 4 | Particulates-Deposited Matter | g/m ² /month | Continuous | 1 | 17-08-15 | 20-08-15 | - | - | - | 1.9 |
| 5 | Particulates-Deposited Matter | g/m ² /month | Continuous | 1 | 17-08-15 | 20-08-15 | - | - | - | 0.2 |
| 6 | Particulates-Deposited Matter | g/m ² /month | Continuous | 1 | 17-08-15 | 20-08-15 | - | - | - | 0.5 |
| 7 | PM ₁₀ | µg/m ³ | Every 6 days | 5 | Various | 4-09-15 | 6.9 | 11.6 | 10.2 | 20.1 |
| 9 | Conductivity | µS/cm | Special Frequency 1* | - | - | - | - | - | - | - |
| | Total organic carbon | mg/L | | | | | - | - | - | - |
| 10 | Conductivity | µS/cm | Special Frequency 1* | - | - | - | - | - | - | - |
| | Total organic carbon | mg/L | | | | | - | - | - | - |

SUNNYSIDE COAL MINE – MONTHLY MONITORING SUMMARY

| EPL ID | Pollutant | Units of Measure | Monitoring Frequency | No. of Samples for the Month | Date(s) Sampled | Date(s) Obtained | Min Value | Mean Value | Median Value | Max or Only Value |
|--------|----------------------|------------------|-----------------------|------------------------------|-----------------|------------------|-----------|------------|--------------|-------------------|
| 11 | TSS | mg/L | Special Frequency 2** | 0 | - | - | - | - | - | - |
| | Conductivity | µS/cm | | 0 | | | - | - | - | - |
| | Oil & Grease | mg/L | | 0 | | | - | - | - | - |
| | pH | pH | | 0 | | | - | - | - | - |
| | Total organic carbon | mg/L | | 0 | | | - | - | - | - |
| 12 | TSS | mg/L | Special Frequency 2** | 0 | - | - | - | - | - | - |
| | Conductivity | µS /cm | | 0 | | | - | - | - | - |
| | Oil & Grease | mg/L | | 0 | | | - | - | - | - |
| | pH | pH | | 0 | | | - | - | - | - |
| | Total organic carbon | mg/L | | 0 | | | - | - | - | - |

Table 2 - Pollutant Limits Apply

| EPL ID | Pollutant | Units of Measure | Monitoring Frequency | No. of Samples for the Month | Date Sampled | Date Obtained | Min Value | Max Value | 100%ile Limit | Exceedance (Yes/No) | Comments |
|--------|--------------|------------------|----------------------|------------------------------|--------------|---------------|-----------|-----------|---------------|---------------------|--------------|
| 9 | TSS | mg/L | Special Frequency 1* | 0 | - | - | - | - | 50 | - | No discharge |
| | Oil & Grease | mg/L | | 0 | | | - | - | 10 | - | No discharge |
| | pH | pH | | 0 | | | - | - | 6.5-8.5 | - | No discharge |
| 10 | TSS | mg/L | Special Frequency 1* | 0 | - | - | - | - | 50 | - | No discharge |
| | Oil & Grease | mg/L | | 0 | | | - | - | 10 | - | No discharge |
| | pH | pH | | 0 | | | - | - | 6.5-8.5 | - | No discharge |

* Special Frequency 1 means the collection of samples as soon as practicable after each discharge commences and in any case not more than 12 hours after each discharge commences.

** Special Frequency 2 means collection of samples quarterly (in the event of flow during the quarter) at a time when there is flow and as soon as practicable after each wet weather discharge from points 9 and 10 commences and in any case not more than 12 hours after each discharge commences.



SUNNYSIDE COAL MINE – MONTHLY MONITORING SUMMARY

Table 3 – Monitoring (Blasts – Limits Apply)

| Location | Parameter | Units of Measure | Frequency | No. of Blasts for the Month | Average Value | Max or Only Value | 100%ile Limit | (Potential) Non-compliance/breach |
|-----------------|------------------|-------------------------|------------------|------------------------------------|----------------------|--------------------------|----------------------|--|
| R1 | Blast Noise | dB (Lin Peak) | Every Blast | 0 | - | - | - | - |
| | Blast Vibration | mm/s | | | - | - | - | - |
| R2 | Blast Noise | dB (Lin Peak) | Every Blast | 0 | - | - | - | - |
| | Blast Vibration | mm/s | | | - | - | - | - |
| R4 | Blast Noise | dB (Lin Peak) | Every Blast | 0 | - | - | - | - |
| | Blast Vibration | mm/s | | | - | - | - | - |
| R6 | Blast Noise | dB (Lin Peak) | Every Blast | 0 | - | - | - | - |
| | Blast Vibration | mm/s | | | - | - | - | - |

SUNNYSIDE COAL MINE – MONTHLY MONITORING SUMMARY

Figure 1 – EPL 12957 Monitoring Locations





SUNNYSIDE COAL MINE – MONTHLY MONITORING SUMMARY

Site Information

EPL No: 12957

EPA Website Link: <http://epa.nsw.gov.au/prpoeoapp/ViewPOEOLicence.aspx?DOCID=40292&SYSUID=1&LICID=12957>

Licensee: Namoi Mining Pty Ltd

Licensee Address: Sunnyside Coal Project, 259 Coocooboona Lane, GUNNEDAH NSW 2380

EPL Monitoring Points: See Figure 1 below

Sampling Period: September 2015

Publication Date: October 2015

Table 1 - No Pollutant Limits Apply

| EPL ID | Pollutant | Units of Measure | Monitoring Frequency | No. of Samples for the Month | Date(s) Sampled | Date(s) Obtained | Min Value | Mean Value | Median Value | Max or Only Value |
|--------|-------------------------------|-------------------------|----------------------|------------------------------|-----------------|------------------|-----------|------------|--------------|-------------------|
| 1 | Particulates-Deposited Matter | g/m ² /month | Continuous | 1 | 16-09-15 | 25-09-15 | - | - | - | 0.3 |
| 2 | Particulates-Deposited Matter | g/m ² /month | Continuous | 1 | 16-09-15 | 25-09-15 | - | - | - | 0.4 |
| 4 | Particulates-Deposited Matter | g/m ² /month | Continuous | 1 | 16-09-15 | 25-09-15 | - | - | - | 1.8 |
| 5 | Particulates-Deposited Matter | g/m ² /month | Continuous | 1 | 16-09-15 | 25-09-15 | - | - | - | 0.4 |
| 6 | Particulates-Deposited Matter | g/m ² /month | Continuous | 1 | 16-09-15 | 25-09-15 | - | - | - | 0.9 |
| 7 | PM ₁₀ | µg/m ³ | Every 6 days | 5 | Various | 13-10-15 | 6.4 | 10.1 | 10.4 | 14.2 |
| 9 | Conductivity | µS/cm | Special Frequency 1* | - | - | - | - | - | - | - |
| | Total organic carbon | mg/L | | | | | - | - | - | - |
| 10 | Conductivity | µS/cm | Special Frequency 1* | - | - | - | - | - | - | - |
| | Total organic carbon | mg/L | | | | | - | - | - | - |

SUNNYSIDE COAL MINE – MONTHLY MONITORING SUMMARY

| EPL ID | Pollutant | Units of Measure | Monitoring Frequency | No. of Samples for the Month | Date(s) Sampled | Date(s) Obtained | Min Value | Mean Value | Median Value | Max or Only Value |
|--------|----------------------|------------------|-----------------------|------------------------------|-----------------|------------------|-----------|------------|--------------|-------------------|
| 11 | TSS | mg/L | Special Frequency 2** | 0 | - | - | - | - | - | - |
| | Conductivity | µS/cm | | 0 | | | - | - | - | - |
| | Oil & Grease | mg/L | | 0 | | | - | - | - | - |
| | pH | pH | | 0 | | | - | - | - | - |
| | Total organic carbon | mg/L | | 0 | | | - | - | - | - |
| 12 | TSS | mg/L | Special Frequency 2** | 0 | - | - | - | - | - | - |
| | Conductivity | µS/cm | | 0 | | | - | - | - | - |
| | Oil & Grease | mg/L | | 0 | | | - | - | - | - |
| | pH | pH | | 0 | | | - | - | - | - |
| | Total organic carbon | mg/L | | 0 | | | - | - | - | - |

Table 2 - Pollutant Limits Apply

| EPL ID | Pollutant | Units of Measure | Monitoring Frequency | No. of Samples for the Month | Date Sampled | Date Obtained | Min Value | Max Value | 100%ile Limit | Exceedance (Yes/No) | Comments |
|--------|--------------|------------------|----------------------|------------------------------|--------------|---------------|-----------|-----------|---------------|---------------------|--------------|
| 9 | TSS | mg/L | Special Frequency 1* | 0 | - | - | - | - | 50 | - | No discharge |
| | Oil & Grease | mg/L | | 0 | | | - | - | 10 | - | No discharge |
| | pH | pH | | 0 | | | - | - | 6.5-8.5 | - | No discharge |
| 10 | TSS | mg/L | Special Frequency 1* | 0 | - | - | - | - | 50 | - | No discharge |
| | Oil & Grease | mg/L | | 0 | | | - | - | 10 | - | No discharge |
| | pH | pH | | 0 | | | - | - | 6.5-8.5 | - | No discharge |

* Special Frequency 1 means the collection of samples as soon as practicable after each discharge commences and in any case not more than 12 hours after each discharge commences.

** Special Frequency 2 means collection of samples quarterly (in the event of flow during the quarter) at a time when there is flow and as soon as practicable after each wet weather discharge from points 9 and 10 commences and in any case not more than 12 hours after each discharge commences.



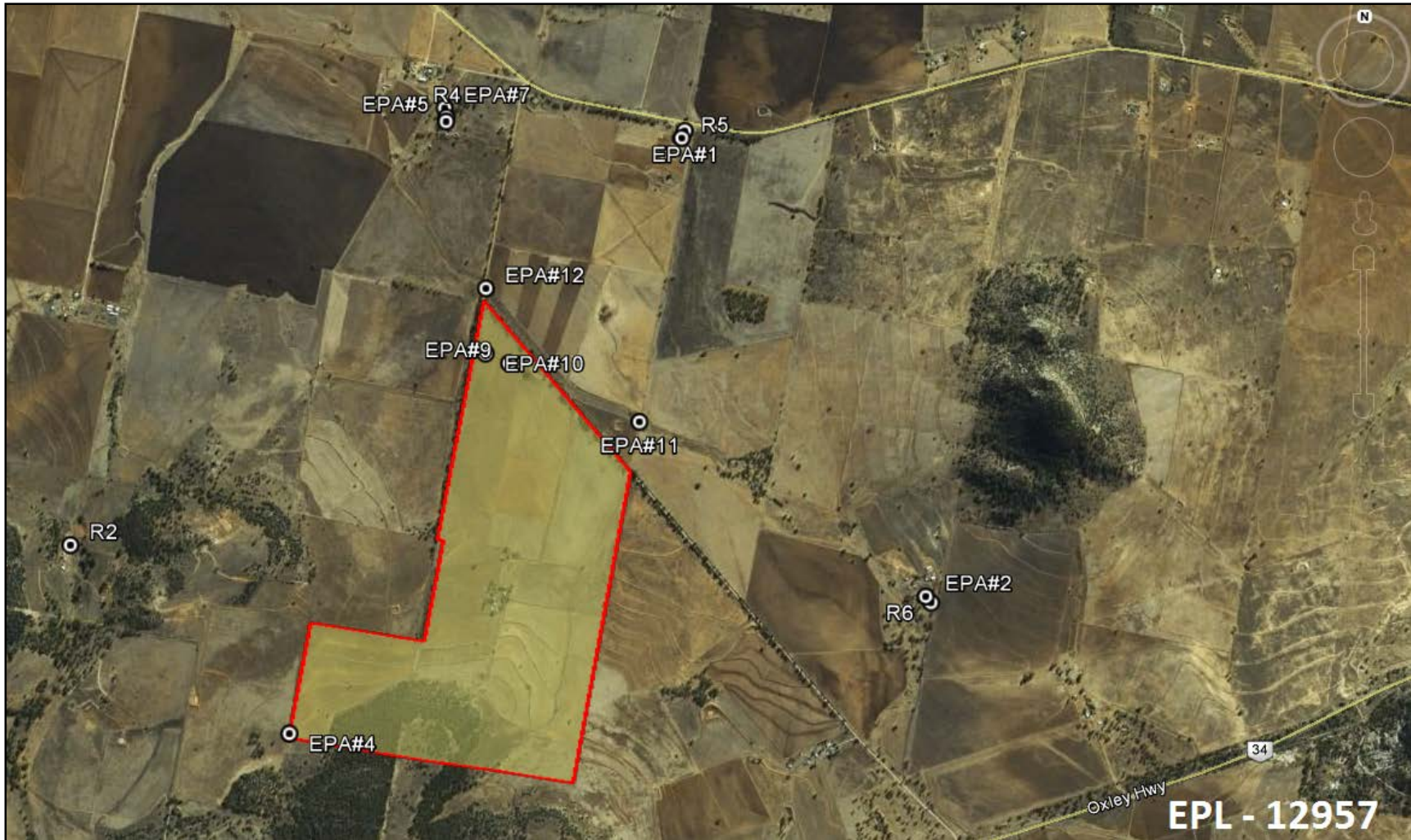
SUNNYSIDE COAL MINE – MONTHLY MONITORING SUMMARY

Table 3 – Monitoring (Blasts – Limits Apply)

| Location | Parameter | Units of Measure | Frequency | No. of Blasts for the Month | Average Value | Max or Only Value | 100%ile Limit | (Potential) Non-compliance/breach |
|----------|-----------------|------------------|-------------|-----------------------------|---------------|-------------------|---------------|-----------------------------------|
| R1 | Blast Noise | dB (Lin Peak) | Every Blast | 0 | - | - | - | - |
| | Blast Vibration | mm/s | | | - | - | - | - |
| R2 | Blast Noise | dB (Lin Peak) | Every Blast | 0 | - | - | - | - |
| | Blast Vibration | mm/s | | | - | - | - | - |
| R4 | Blast Noise | dB (Lin Peak) | Every Blast | 0 | - | - | - | - |
| | Blast Vibration | mm/s | | | - | - | - | - |
| R6 | Blast Noise | dB (Lin Peak) | Every Blast | 0 | - | - | - | - |
| | Blast Vibration | mm/s | | | - | - | - | - |

SUNNYSIDE COAL MINE – MONTHLY MONITORING SUMMARY

Figure 1 – EPL 12957 Monitoring Locations





SUNNYSIDE COAL MINE – MONTHLY MONITORING SUMMARY

Site Information

EPL No: 12957

EPA Website Link: <http://epa.nsw.gov.au/prpoeoapp/ViewPOEOLicence.aspx?DOCID=40292&SYSUID=1&LICID=12957>

Licensee: Namoi Mining Pty Ltd

Licensee Address: Sunnyside Coal Project, 259 Coocooboona Lane, GUNNEDAH NSW 2380

EPL Monitoring Points: See Figure 1 below

Sampling Period: October 2015

Publication Date: 10th November 2015

Table 1 - No Pollutant Limits Apply

| EPL ID | Pollutant | Units of Measure | Monitoring Frequency | No. of Samples for the Month | Date(s) Sampled | Date(s) Obtained | Min Value | Mean Value | Median Value | Max or Only Value |
|--------|-------------------------------|-------------------------|----------------------|------------------------------|-----------------|------------------|-----------|------------|--------------|-------------------|
| 1 | Particulates-Deposited Matter | g/m ² /month | Continuous | 1 | 16-10-15 | 22-10-15 | - | - | - | 0.5 |
| 2 | Particulates-Deposited Matter | g/m ² /month | Continuous | 1 | 16-10-15 | 22-10-15 | - | - | - | 3.5 |
| 4 | Particulates-Deposited Matter | g/m ² /month | Continuous | 1 | 16-10-15 | 22-10-15 | - | - | - | 2.7 |
| 5 | Particulates-Deposited Matter | g/m ² /month | Continuous | 1 | 16-10-15 | 22-10-15 | - | - | - | 1.2 |
| 6 | Particulates-Deposited Matter | g/m ² /month | Continuous | 1 | 16-10-15 | 22-10-15 | - | - | - | 0.5 |
| 7 | PM ₁₀ | µg/m ³ | Every 6 days | 5 | Various | 09-10-15 | 12.3 | 17.3 | 17.3 | 21.6 |
| 9 | Conductivity | µS/cm | Special Frequency 1* | - | - | - | - | - | - | - |
| | Total organic carbon | mg/L | | | | | - | - | - | - |
| 10 | Conductivity | µS/cm | Special Frequency 1* | - | - | - | - | - | - | - |
| | Total organic carbon | mg/L | | | | | - | - | - | - |

SUNNYSIDE COAL MINE – MONTHLY MONITORING SUMMARY

| EPL ID | Pollutant | Units of Measure | Monitoring Frequency | No. of Samples for the Month | Date(s) Sampled | Date(s) Obtained | Min Value | Mean Value | Median Value | Max or Only Value |
|--------|----------------------|------------------|-----------------------|------------------------------|-----------------|------------------|-----------|------------|--------------|-------------------|
| 11 | TSS | mg/L | Special Frequency 2** | 0 | - | - | - | - | - | - |
| | Conductivity | µS/cm | | 0 | | | - | - | - | - |
| | Oil & Grease | mg/L | | 0 | | | - | - | - | - |
| | pH | pH | | 0 | | | - | - | - | - |
| | Total organic carbon | mg/L | | 0 | | | - | - | - | - |
| 12 | TSS | mg/L | Special Frequency 2** | 0 | - | - | - | - | - | - |
| | Conductivity | µS /cm | | 0 | | | - | - | - | - |
| | Oil & Grease | mg/L | | 0 | | | - | - | - | - |
| | pH | pH | | 0 | | | - | - | - | - |
| | Total organic carbon | mg/L | | 0 | | | - | - | - | - |

Table 2 - Pollutant Limits Apply

| EPL ID | Pollutant | Units of Measure | Monitoring Frequency | No. of Samples for the Month | Date Sampled | Date Obtained | Min Value | Max Value | 100%ile Limit | Exceedance (Yes/No) | Comments |
|--------|--------------|------------------|----------------------|------------------------------|--------------|---------------|-----------|-----------|---------------|---------------------|--------------|
| 9 | TSS | mg/L | Special Frequency 1* | 0 | - | - | - | - | 50 | - | No discharge |
| | Oil & Grease | mg/L | | 0 | | | - | - | 10 | - | No discharge |
| | pH | pH | | 0 | | | - | - | 6.5-8.5 | - | No discharge |
| 10 | TSS | mg/L | Special Frequency 1* | 0 | - | - | - | - | 50 | - | No discharge |
| | Oil & Grease | mg/L | | 0 | | | - | - | 10 | - | No discharge |
| | pH | pH | | 0 | | | - | - | 6.5-8.5 | - | No discharge |

* Special Frequency 1 means the collection of samples as soon as practicable after each discharge commences and in any case not more than 12 hours after each discharge commences.

** Special Frequency 2 means collection of samples quarterly (in the event of flow during the quarter) at a time when there is flow and as soon as practicable after each wet weather discharge from points 9 and 10 commences and in any case not more than 12 hours after each discharge commences.



SUNNYSIDE COAL MINE – MONTHLY MONITORING SUMMARY

Table 3 – Monitoring (Blasts – Limits Apply)

| Location | Parameter | Units of Measure | Frequency | No. of Blasts for the Month | Average Value | Max or Only Value | 100%ile Limit | (Potential) Non-compliance/breach |
|-----------------|------------------|-------------------------|------------------|------------------------------------|----------------------|--------------------------|----------------------|--|
| R1 | Blast Noise | dB (Lin Peak) | Every Blast | 0 | - | - | - | - |
| | Blast Vibration | mm/s | | | - | - | - | - |
| R2 | Blast Noise | dB (Lin Peak) | Every Blast | 0 | - | - | - | - |
| | Blast Vibration | mm/s | | | - | - | - | - |
| R4 | Blast Noise | dB (Lin Peak) | Every Blast | 0 | - | - | - | - |
| | Blast Vibration | mm/s | | | - | - | - | - |
| R6 | Blast Noise | dB (Lin Peak) | Every Blast | 0 | - | - | - | - |
| | Blast Vibration | mm/s | | | - | - | - | - |

SUNNYSIDE COAL MINE – MONTHLY MONITORING SUMMARY

Figure 1 – EPL 12957 Monitoring Locations





SUNNYSIDE COAL MINE – MONTHLY MONITORING SUMMARY

Site Information

EPL No: 12957

EPA Website Link: <http://epa.nsw.gov.au/prpoeoapp/ViewPOEOLicence.aspx?DOCID=40292&SYSUID=1&LICID=12957>

Licensee: Namoi Mining Pty Ltd

Licensee Address: Sunnyside Coal Project, 259 Coocooboona Lane, GUNNEDAH NSW 2380

EPL Monitoring Points: See Figure 1 below

Sampling Period: November 2015

Publication Date: 17 December 2015

Table 1 - No Pollutant Limits Apply

| EPL ID | Pollutant | Units of Measure | Monitoring Frequency | No. of Samples for the Month | Date(s) Sampled | Date(s) Obtained | Min Value | Mean Value | Median Value | Max or Only Value |
|--------|-------------------------------|-------------------------|----------------------|------------------------------|-----------------|------------------|-----------|------------|--------------|-------------------|
| 1 | Particulates-Deposited Matter | g/m ² /month | Continuous | 1 | 17-11-2015 | 24-11-2015 | - | - | - | 1.0 |
| 2 | Particulates-Deposited Matter | g/m ² /month | Continuous | 1 | 17-11-2015 | 24-11-2015 | - | - | - | 1.5 |
| 4 | Particulates-Deposited Matter | g/m ² /month | Continuous | 1 | 17-11-2015 | 24-11-2015 | - | - | - | 2.7 |
| 5 | Particulates-Deposited Matter | g/m ² /month | Continuous | 1 | 17-11-2015 | 24-11-2015 | - | - | - | 3.3 |
| 6 | Particulates-Deposited Matter | g/m ² /month | Continuous | 1 | 17-11-2015 | 24-11-2015 | - | - | - | 0.5 |
| 7 | PM ₁₀ | µg/m ³ | Every 6 days | 5 | Various | 9-12-2015 | 8.7 | 18.26 | 15.4 | 27.0 |
| 9 | Conductivity | µS/cm | Special Frequency 1* | - | - | - | - | - | - | - |
| | Total organic carbon | mg/L | | | | | - | - | - | - |
| 10 | Conductivity | µS/cm | Special Frequency 1* | - | - | - | - | - | - | - |
| | Total organic carbon | mg/L | | | | | - | - | - | - |

SUNNYSIDE COAL MINE – MONTHLY MONITORING SUMMARY

| EPL ID | Pollutant | Units of Measure | Monitoring Frequency | No. of Samples for the Month | Date(s) Sampled | Date(s) Obtained | Min Value | Mean Value | Median Value | Max or Only Value |
|--------|----------------------|------------------|-----------------------|------------------------------|-----------------|------------------|-----------|------------|--------------|-------------------|
| 11 | TSS | mg/L | Special Frequency 2** | 0 | - | - | - | - | - | - |
| | Conductivity | µS/cm | | 0 | | | - | - | - | - |
| | Oil & Grease | mg/L | | 0 | | | - | - | - | - |
| | pH | pH | | 0 | | | - | - | - | - |
| | Total organic carbon | mg/L | | 0 | | | - | - | - | - |
| 12 | TSS | mg/L | Special Frequency 2** | 0 | - | - | - | - | - | - |
| | Conductivity | µS /cm | | 0 | | | - | - | - | - |
| | Oil & Grease | mg/L | | 0 | | | - | - | - | - |
| | pH | pH | | 0 | | | - | - | - | - |
| | Total organic carbon | mg/L | | 0 | | | - | - | - | - |

Table 2 - Pollutant Limits Apply

| EPL ID | Pollutant | Units of Measure | Monitoring Frequency | No. of Samples for the Month | Date Sampled | Date Obtained | Min Value | Max Value | 100%ile Limit | Exceedance (Yes/No) | Comments |
|--------|--------------|------------------|----------------------|------------------------------|--------------|---------------|-----------|-----------|---------------|---------------------|--------------|
| 9 | TSS | mg/L | Special Frequency 1* | 0 | - | - | - | - | 50 | - | No discharge |
| | Oil & Grease | mg/L | | 0 | | | - | - | 10 | - | No discharge |
| | pH | pH | | 0 | | | - | - | 6.5-8.5 | - | No discharge |
| 10 | TSS | mg/L | Special Frequency 1* | 0 | - | - | - | - | 50 | - | No discharge |
| | Oil & Grease | mg/L | | 0 | | | - | - | 10 | - | No discharge |
| | pH | pH | | 0 | | | - | - | 6.5-8.5 | - | No discharge |

* Special Frequency 1 means the collection of samples as soon as practicable after each discharge commences and in any case not more than 12 hours after each discharge commences.

** Special Frequency 2 means collection of samples quarterly (in the event of flow during the quarter) at a time when there is flow and as soon as practicable after each wet weather discharge from points 9 and 10 commences and in any case not more than 12 hours after each discharge commences.



SUNNYSIDE COAL MINE – MONTHLY MONITORING SUMMARY

Table 3 – Monitoring (Blasts – Limits Apply)

| Location | Parameter | Units of Measure | Frequency | No. of Blasts for the Month | Average Value | Max or Only Value | 100%ile Limit | (Potential) Non-compliance/breach |
|-----------------|------------------|-------------------------|------------------|------------------------------------|----------------------|--------------------------|----------------------|--|
| R1 | Blast Noise | dB (Lin Peak) | Every Blast | 0 | - | - | - | - |
| | Blast Vibration | mm/s | | | - | - | - | - |
| R2 | Blast Noise | dB (Lin Peak) | Every Blast | 0 | - | - | - | - |
| | Blast Vibration | mm/s | | | - | - | - | - |
| R4 | Blast Noise | dB (Lin Peak) | Every Blast | 0 | - | - | - | - |
| | Blast Vibration | mm/s | | | - | - | - | - |
| R6 | Blast Noise | dB (Lin Peak) | Every Blast | 0 | - | - | - | - |
| | Blast Vibration | mm/s | | | - | - | - | - |

SUNNYSIDE COAL MINE – MONTHLY MONITORING SUMMARY

Figure 1 – EPL 12957 Monitoring Locations





SUNNYSIDE COAL MINE – MONTHLY MONITORING SUMMARY

Site Information

EPL No: 12957

EPA Website Link: <http://epa.nsw.gov.au/prpoeoapp/ViewPOEOLicence.aspx?DOCID=40292&SYSUID=1&LICID=12957>

Licensee: Namoi Mining Pty Ltd

Licensee Address: Sunnyside Coal Project, 259 Coocooboona Lane, GUNNEDAH NSW 2380

EPL Monitoring Points: See Figure 1 below

Sampling Period: December 2015

Publication Date: 14 January 2016

Table 1 - No Pollutant Limits Apply

| EPL ID | Pollutant | Units of Measure | Monitoring Frequency | No. of Samples for the Month | Date(s) Sampled | Date(s) Obtained | Min Value | Mean Value | Median Value | Max or Only Value |
|--------|-------------------------------|-------------------------|----------------------|------------------------------|-----------------|------------------|-----------|------------|--------------|-------------------|
| 1 | Particulates-Deposited Matter | g/m ² /month | Continuous | 1 | 16/12/15 | 29/12/15 | - | - | - | 2.2 |
| 2 | Particulates-Deposited Matter | g/m ² /month | Continuous | 1 | 16/12/15 | 29/12/15 | - | - | - | 2.3 |
| 4 | Particulates-Deposited Matter | g/m ² /month | Continuous | 1 | 16/12/15 | 29/12/15 | - | - | - | 3.5 |
| 5 | Particulates-Deposited Matter | g/m ² /month | Continuous | 1 | 16/12/15 | 29/12/15 | - | - | - | 1.5 |
| 6 | Particulates-Deposited Matter | g/m ² /month | Continuous | 1 | 16/12/15 | 29/12/15 | - | - | - | 0.5 |
| 7 | PM ₁₀ | µg/m ³ | Every 6 days | 5 | Various | 11/01/16 | 4.6 | 17.4 | 20.4 | 27.4 |
| 9 | Conductivity | µS/cm | Special Frequency 1* | - | - | - | - | - | - | - |
| | Total organic carbon | mg/L | | | | | - | - | - | - |
| 10 | Conductivity | µS/cm | Special Frequency 1* | - | - | - | - | - | - | - |
| | Total organic carbon | mg/L | | | | | - | - | - | - |

SUNNYSIDE COAL MINE – MONTHLY MONITORING SUMMARY

| EPL ID | Pollutant | Units of Measure | Monitoring Frequency | No. of Samples for the Month | Date(s) Sampled | Date(s) Obtained | Min Value | Mean Value | Median Value | Max or Only Value |
|--------|----------------------|------------------|-----------------------|------------------------------|-----------------|------------------|-----------|------------|--------------|-------------------|
| 11 | TSS | mg/L | Special Frequency 2** | 0 | - | - | - | - | - | - |
| | Conductivity | µS/cm | | 0 | | | - | - | - | - |
| | Oil & Grease | mg/L | | 0 | | | - | - | - | - |
| | pH | pH | | 0 | | | - | - | - | - |
| | Total organic carbon | mg/L | | 0 | | | - | - | - | - |
| 12 | TSS | mg/L | Special Frequency 2** | 0 | - | - | - | - | - | - |
| | Conductivity | µS /cm | | 0 | | | - | - | - | - |
| | Oil & Grease | mg/L | | 0 | | | - | - | - | - |
| | pH | pH | | 0 | | | - | - | - | - |
| | Total organic carbon | mg/L | | 0 | | | - | - | - | - |

Table 2 - Pollutant Limits Apply

| EPL ID | Pollutant | Units of Measure | Monitoring Frequency | No. of Samples for the Month | Date Sampled | Date Obtained | Min Value | Max Value | 100%ile Limit | Exceedance (Yes/No) | Comments |
|--------|--------------|------------------|----------------------|------------------------------|--------------|---------------|-----------|-----------|---------------|---------------------|--------------|
| 9 | TSS | mg/L | Special Frequency 1* | 0 | - | - | - | - | 50 | - | No discharge |
| | Oil & Grease | mg/L | | 0 | | | - | - | 10 | - | No discharge |
| | pH | pH | | 0 | | | - | - | 6.5-8.5 | - | No discharge |
| 10 | TSS | mg/L | Special Frequency 1* | 0 | - | - | - | - | 50 | - | No discharge |
| | Oil & Grease | mg/L | | 0 | | | - | - | 10 | - | No discharge |
| | pH | pH | | 0 | | | - | - | 6.5-8.5 | - | No discharge |

* Special Frequency 1 means the collection of samples as soon as practicable after each discharge commences and in any case not more than 12 hours after each discharge commences.

** Special Frequency 2 means collection of samples quarterly (in the event of flow during the quarter) at a time when there is flow and as soon as practicable after each wet weather discharge from points 9 and 10 commences and in any case not more than 12 hours after each discharge commences.



SUNNYSIDE COAL MINE – MONTHLY MONITORING SUMMARY

Table 3 – Monitoring (Blasts – Limits Apply)

| Location | Parameter | Units of Measure | Frequency | No. of Blasts for the Month | Average Value | Max or Only Value | 100%ile Limit | (Potential) Non-compliance/breach |
|-----------------|------------------|-------------------------|------------------|------------------------------------|----------------------|--------------------------|----------------------|--|
| R1 | Blast Noise | dB (Lin Peak) | Every Blast | 0 | - | - | - | - |
| | Blast Vibration | mm/s | | | - | - | - | - |
| R2 | Blast Noise | dB (Lin Peak) | Every Blast | 0 | - | - | - | - |
| | Blast Vibration | mm/s | | | - | - | - | - |
| R4 | Blast Noise | dB (Lin Peak) | Every Blast | 0 | - | - | - | - |
| | Blast Vibration | mm/s | | | - | - | - | - |
| R6 | Blast Noise | dB (Lin Peak) | Every Blast | 0 | - | - | - | - |
| | Blast Vibration | mm/s | | | - | - | - | - |

SUNNYSIDE COAL MINE – MONTHLY MONITORING SUMMARY

Figure 1 – EPL 12957 Monitoring Locations

