

SUNNYSIDE COAL MINE – MONTHLY MONITORING SUMMARY
Site Information
EPL No: 12957

EPA Website Link: <http://www.environment.nsw.gov.au/prpoeoapp/ViewPOEOLicence.aspx?DOCID=31541&SYSUID=1&LICID=12957> (Licence version 15-Jun-2012)

Licensee: Namoi Mining Pty Ltd

Licensee Address: Sunnyside Coal Project, 259 Coccooboonah Lane, GUNNEDAH NSW 2380

EPL Monitoring Points: See Figure 1 below

Sampling Period: April 2012 (Licence version 20-Dec-2011)

Publication Date: 22nd June 2012 (re-published 9th September 2014)

Table 1 - No Pollutant Limits Apply

EPL ID	Pollutant	Units of Measure	Monitoring Frequency	No. of Samples for the Month	Date(s) Sampled	Date Obtained	Min Value	Mean Value	Median Value	Max Value
1	Particulates-Deposited Matter	g/m ² /month	Continuous	1	18/4/2012	27/4/2012	0.8	0.8	0.8	0.8
2	Particulates-Deposited Matter	g/m ² /month	Continuous	1	18/4/2012	27/4/2012	3.3	3.3	3.3	3.3
3	Particulates-Deposited Matter	g/m ² /month	Continuous	1	18/4/2012	27/4/2012	0.4	0.4	0.4	0.4
4	Particulates-Deposited Matter	g/m ² /month	Continuous	1	18/4/2012	27/4/2012	1.7	1.7	1.7	1.7
5	Particulates-Deposited Matter	g/m ² /month	Continuous	1	18/4/2012	27/4/2012	1.1	1.1	1.1	1.1
6	Particulates-Deposited Matter	g/m ² /month	Continuous	1	18/4/2012	27/4/2012	1.1	1.1	1.1	1.1
7	PM ₁₀	µg/m ³	Continuous*	5	2,8,14,20,26/5/2012	7/5/2012	9.0	14.6	15	22.4
8	PM ₁₀	µg/m ³	Continuous*	5	2,8,14,20,26/5/2012	7/5/2012	2.7	9.6	6.7	17.5
9	Conductivity	µS/cm	Special Frequency 1**	0	-	-	-	-	-	-
	Total organic carbon	mg/L		0	-	-	-	-	-	-
10	Conductivity	µS/cm	Special Frequency 1**	0	-	-	-	-	-	-
	Total organic carbon	mg/L		0	-	-	-	-	-	-

SUNNYSIDE COAL MINE – MONTHLY MONITORING SUMMARY

11	TSS	mg/L	Special Frequency 2***	0	-	-	-	-	-	-
	Conductivity	µS/cm		0	-	-	-	-	-	-
	Oil & Grease	mg/L		0	-	-	-	-	-	-
	pH	pH		0	-	-	-	-	-	-
	Total organic carbon	mg/L		0	-	-	-	-	-	-
12	TSS	mg/L	Special Frequency 2***	0	-	-	-	-	-	-
	Conductivity	µS/cm		0	-	-	-	-	-	-
	Oil & Grease	mg/L		0	-	-	-	-	-	-
	pH	pH		0	-	-	-	-	-	-
	Total organic carbon	mg/L		0	-	-	-	-	-	-

* This frequency is an error; this licence has since been varied to a frequency of every 6 days.

** Special Frequency 1 means the collection of samples as soon as practicable after each discharge commences and in any case not more than 12 hours after each discharge commences.

*** Special Frequency 2 means collection of samples quarterly (in the event of flow during the quarter) at a time when there is flow and as soon as practicable after each wet weather discharge from points 9 and 10 commences and in any case not more than 12 hours after each discharge commences.

Table 2 - Pollutant Limits Apply

EPL ID	Pollutant	Units of Measure	Monitoring Frequency	No. of Samples for the Month	Date Sampled	Date Obtained	Min Value	Max Value	100%ile Limit	Exceedance (Yes/No)	Comments
9	TSS	mg/L	Special Frequency 1**	0	-	-	-	-	50	-	No discharge
	Oil & Grease	mg/L		0	-	-	-	-	10	-	No discharge
	pH	pH		0	-	-	-	-	6.5-8.5	-	No discharge
10	TSS	mg/L	Special Frequency 1**	0	-	-	-	-	50	-	No discharge
	Oil & Grease	mg/L		0	-	-	-	-	10	-	No discharge
	pH	pH		0	-	-	-	-	6.5-8.5	-	No discharge



SUNNYSIDE COAL MINE – MONTHLY MONITORING SUMMARY

Table 3 – Monitoring (Noise – Limits Apply)

EPL ID	Date	Start Time	Measurement Period	Measured Levels – dB(A)	Measured Levels – dB(A)	Measured Levels – dB(A)	Measured Levels – dB(A)	Limit(s)	Weather	Compliant (Yes/No)	Comments
				L _{eq} 15min Day	L _{eq} 15min Evening	L _{eq} 15min Night	L _{A1} (1 min) Night				
R2	-	-	-	-	-	-	-	Day, Evening & Night~: 35	-	-	No monitoring for month
R4	-	-	-	-	-	-	-	Day, Evening & Night~: 35	-	-	No monitoring for month
R5	-	-	-	-	-	-	-	Day, Evening & Night~: 35	-	-	No monitoring for month
R6	-	-	-	-	-	-	-	Day, Evening & Night~: 35	-	-	No monitoring for month

~Note Sunnyside mine does not operate during night hours, hence no measurements are taken.



SUNNYSIDE COAL MINE – MONTHLY MONITORING SUMMARY

Table 4 – Monitoring (Blasts – Limits Apply)

Location	Parameter	Units of Measure	Frequency	No. of Blasts for the Month	Average Value	Max Value	100%ile Limit	(Potential) Non-compliance /breach
R1	Blast Noise	dB (Lin Peak)	Every Blast	1	101.3	101.3	120	No
	Blast Vibration	mm/s	Every Blast	1	0.29	0.29	10	No
R2	Blast Noise	dB (Lin Peak)	Every Blast	1	DNT	DNT	120	No
	Blast Vibration	mm/s	Every Blast	1	DNT	DNT	10	No
R4	Blast Noise	dB (Lin Peak)	Every Blast	1	DNT	DNT	120	No
	Blast Vibration	mm/s	Every Blast	1	DNT	DNT	10	No
R6	Blast Noise	dB (Lin Peak)	Every Blast	1	98.6	98.6	120	No
	Blast Vibration	mm/s	Every Blast	1	0.37	0.37	10	No

DNT – Indicates the blast did not trigger a result at the monitor.

SUNNYSIDE COAL MINE – MONTHLY MONITORING SUMMARY

Figure 1 – EPL 12957 Monitoring Locations





SUNNYSIDE COAL MINE – MONTHLY MONITORING SUMMARY

Site Information

EPL No: 12957

EPA Website Link: <http://www.environment.nsw.gov.au/prpoeoapp/ViewPOEOLicence.aspx?DOCID=31541&SYSUID=1&LICID=12957> (Licence version 15-Jun-2012)

Licensee: Namoi Mining Pty Ltd

Licensee Address: Sunnyside Coal Project, 259 Coccoo boonah Lane, GUNNEDAH NSW 2380

EPL Monitoring Points: See Figure 1 below

Sampling Period: May 2012 (Licence version 20-Dec-2011)

Publication Date: 22nd June 2012 (re-published 9th September 2014)

Table 1 - No Pollutant Limits Apply

EPL ID	Pollutant	Units of Measure	Monitoring Frequency	No. of Samples for the Month	Date(s) Sampled	Date Obtained	Min Value	Mean Value	Median Value	Max Value
1	Particulates-Deposited Matter	g/m ² /month	Continuous	1	18/5/2012	30/5/2012	1.6	1.6	1.6	1.6
2	Particulates-Deposited Matter	g/m ² /month	Continuous	1	18/5/2012	30/5/2012	0.5	0.5	0.5	0.5
3	Particulates-Deposited Matter	g/m ² /month	Continuous	1	18/5/2012	30/5/2012	0.5	0.5	0.5	0.5
4	Particulates-Deposited Matter	g/m ² /month	Continuous	1	18/5/2012	30/5/2012	1.2	1.2	1.2	1.2
5	Particulates-Deposited Matter	g/m ² /month	Continuous	1	18/5/2012	30/5/2012	0.7	0.7	0.7	0.7
6	Particulates-Deposited Matter	g/m ² /month	Continuous	1	18/5/2012	30/5/2012	1.2	1.2	1.2	1.2
7	PM ₁₀	µg/m ³	Continuous*	5	2,8,14,20,26/5/2012	8/6/2012	5.3	11.2	12.9	17.6
8	PM ₁₀	µg/m ³	Continuous*	5	2,8,14,20,26/5/2012	8/6/2012	3.5	6.9	6.7	11.9
9	Conductivity	µS/cm	Special Frequency 1**	0	-	-	-	-	-	-
	Total organic carbon	mg/L		0	-	-	-	-	-	-
10	Conductivity	µS/cm	Special Frequency 1**	0	-	-	-	-	-	-
	Total organic carbon	mg/L		0	-	-	-	-	-	-

SUNNYSIDE COAL MINE – MONTHLY MONITORING SUMMARY

11	TSS	mg/L	Special Frequency 2***	0	-	-	-	-	-	-
	Conductivity	µS/cm		0	-	-	-	-	-	-
	Oil & Grease	mg/L		0	-	-	-	-	-	-
	pH	pH		0	-	-	-	-	-	-
	Total organic carbon	mg/L		0	-	-	-	-	-	-
12	TSS	mg/L	Special Frequency 2***	0	-	-	-	-	-	-
	Conductivity	µS/cm		0	-	-	-	-	-	-
	Oil & Grease	mg/L		0	-	-	-	-	-	-
	pH	pH		0	-	-	-	-	-	-
	Total organic carbon	mg/L		0	-	-	-	-	-	-

* This frequency is an error; this licence has since been varied to a frequency of every 6 days.

** Special Frequency 1 means the collection of samples as soon as practicable after each discharge commences and in any case not more than 12 hours after each discharge commences.

*** Special Frequency 2 means collection of samples quarterly (in the event of flow during the quarter) at a time when there is flow and as soon as practicable after each wet weather discharge from points 9 and 10 commences and in any case not more than 12 hours after each discharge commences.

Table 2 - Pollutant Limits Apply

EPL ID	Pollutant	Units of Measure	Monitoring Frequency	No. of Samples for the Month	Date Sampled	Date Obtained	Min Value	Max Value	100%ile Limit	Exceedance (Yes/No)	Comments
9	TSS	mg/L	Special Frequency 1**	0	-	-	-	-	50	-	No discharge
	Oil & Grease	mg/L		0	-	-	-	-	10	-	No discharge
	pH	pH		0	-	-	-	-	6.5-8.5	-	No discharge
10	TSS	mg/L	Special Frequency 1**	0	-	-	-	-	50	-	No discharge
	Oil & Grease	mg/L		0	-	-	-	-	10	-	No discharge
	pH	pH		0	-	-	-	-	6.5-8.5	-	No discharge



SUNNYSIDE COAL MINE – MONTHLY MONITORING SUMMARY

Table 3 – Monitoring (Noise – Limits Apply)

EPL ID	Date	Start Time	Measurement Period	Measured Levels – dB(A) <small>L_{eq} 15min Day</small>	Measured Levels – dB(A) <small>L_{eq} 15min Evening</small>	Limit(s)	Weather	Compliant (Yes/No)	Comments
R2	29/5/2012	-	-	-	-	Day, Evening & Night~: 35	-	-	No access to property
R4	29/5/2012	4:23pm /8:08pm	Day/Evening	35	33	Day, Evening & Night~: 35	Wind 1m/s South and 2m/s South	Yes	
R5	29/5/2012	5:12pm /9:01pm	Day/Evening	35	37	Day, Evening & Night~: 35	Wind 1.5m/s South	Yes	Temperature inversion present
R6	29/5/2012	3:58pm /7:36pm	Day/Evening	Inaudible	Inaudible	Day, Evening & Night~: 35	Wind 2-3m/s South	Yes	

~Note Sunnyside mine does not operate during night hours, hence no measurements are taken.



SUNNYSIDE COAL MINE – MONTHLY MONITORING SUMMARY

Table 4 – Monitoring (Blasts – Limits Apply)

Location	Parameter	Units of Measure	Frequency	No. of Blasts for the Month	Average Value	Max Value	100%ile Limit	(Potential) Non-compliance /breach
R1	Blast Noise	dB (Lin Peak)	Every Blast	3	102.3	103.5	120	No
	Blast Vibration	mm/s	Every Blast	3	1.17	1.8	10	No
R2	Blast Noise	dB (Lin Peak)	Every Blast	3	102.9	107.0	120	No
	Blast Vibration	mm/s	Every Blast	3	0.77	1.06	10	No
R4	Blast Noise	dB (Lin Peak)	Every Blast	3	DNT	DNT	120	No
	Blast Vibration	mm/s	Every Blast	3	DNT	DNT	10	No
R6	Blast Noise	dB (Lin Peak)	Every Blast	3	107.7	107.9	120	No
	Blast Vibration	mm/s	Every Blast	3	0.98	1.07	10	No

DNT – Indicates the blast did not trigger a result at the monitor.

SUNNYSIDE COAL MINE – MONTHLY MONITORING SUMMARY

Figure 1 – EPL 12957 Monitoring Locations





SUNNYSIDE COAL MINE – MONTHLY MONITORING SUMMARY

Site Information

EPL No: 12957

EPA Website Link: <http://www.environment.nsw.gov.au/prpoeoapp/ViewPOEOLicence.aspx?DOCID=31541&SYSUID=1&LICID=12957>

Licensee: Namoi Mining Pty Ltd

Licensee Address: Sunnyside Coal Project, 259 Coocooboona Lane, GUNNEDAH NSW 2380

EPL Monitoring Points: See Figure 1 below

Sampling Period: June 2012

Publication Date: 24th July 2012 (re-published 9th September 2014)

Table 1 - No Pollutant Limits Apply

EPL ID	Pollutant	Units of Measure	Monitoring Frequency	No. of Samples for the Month	Date(s) Sampled	Date Obtained	Min Value	Mean Value	Median Value	Max Value
1	Particulates-Deposited Matter	g/m ² /month	Continuous	1	19/6/2012	2/7/2012	2.2	2.2	2.2	2.2
2	Particulates-Deposited Matter	g/m ² /month	Continuous	1	19/6/2012	2/7/2012	1.0	1.0	1.0	1.0
4	Particulates-Deposited Matter	g/m ² /month	Continuous	1	19/6/2012	2/7/2012	0.8	0.8	0.8	0.8
5	Particulates-Deposited Matter	g/m ² /month	Continuous	1	19/6/2012	2/7/2012	0.8	0.8	0.8	0.8
6	Particulates-Deposited Matter	g/m ² /month	Continuous	1	19/6/2012	2/7/2012	0.7	0.7	0.7	0.7
7	PM ₁₀	µg/m ³	Every 6 days	5	1,7,13,19,25/6/2012	10/7/2012	5.5	7.1	7.1	9.2
9	Conductivity	µS/cm	Special Frequency 1*	0	-	-	-	-	-	-
	Total organic carbon	mg/L		0	-	-	-	-	-	-
10	Conductivity	µS/cm	Special Frequency 1*	0	-	-	-	-	-	-
	Total organic carbon	mg/L		0	-	-	-	-	-	-



SUNNYSIDE COAL MINE – MONTHLY MONITORING SUMMARY

11	TSS	mg/L	Special Frequency 2**	0	-	-	-	-	-	-
	Conductivity	µS/cm		0	-	-	-	-	-	-
	Oil & Grease	mg/L		0	-	-	-	-	-	-
	pH	pH		0	-	-	-	-	-	-
	Total organic carbon	mg/L		0	-	-	-	-	-	-
12	TSS	mg/L	Special Frequency 2**	0	-	-	-	-	-	-
	Conductivity	µS/cm		0	-	-	-	-	-	-
	Oil & Grease	mg/L		0	-	-	-	-	-	-
	pH	pH		0	-	-	-	-	-	-
	Total organic carbon	mg/L		0	-	-	-	-	-	-

* Special Frequency 1 means the collection of samples as soon as practicable after each discharge commences and in any case not more than 12 hours after each discharge commences.

** Special Frequency 2 means collection of samples quarterly (in the event of flow during the quarter) at a time when there is flow and as soon as practicable after each wet weather discharge from points 9 and 10 commences and in any case not more than 12 hours after each discharge commences.

Table 2 - Pollutant Limits Apply

EPL ID	Pollutant	Units of Measure	Monitoring Frequency	No. of Samples for the Month	Date Sampled	Date Obtained	Min Value	Max Value	100%ile Limit	Exceedance (Yes/No)	Comments
9	TSS	mg/L	Special Frequency 1*	0	-	-	-	-	50	-	No discharge
	Oil & Grease	mg/L		0	-	-	-	-	10	-	No discharge
	pH	pH		0	-	-	-	-	6.5-8.5	-	No discharge
10	TSS	mg/L	Special Frequency 1*	0	-	-	-	-	50	-	No discharge
	Oil & Grease	mg/L		0	-	-	-	-	10	-	No discharge
	pH	pH		0	-	-	-	-	6.5-8.5	-	No discharge



SUNNYSIDE COAL MINE – MONTHLY MONITORING SUMMARY

Table 3 – Monitoring (Noise – Limits Apply)

EPL ID	Date	Start Time	Measurement Period	Measured Levels – dB(A)	Measured Levels – dB(A)	Limit(s)	Weather	Compliant (Yes/No)	Comments
				L _{eq} 15min Day	L _{eq} 15min Evening				
R2	-	-	-	-	-	Day, Evening & Night~: 35	-	-	No monitoring for month
R4	-	-	-	-	-	Day, Evening & Night~: 35	-	-	No monitoring for month
R5	-	-	-	-	-	Day, Evening & Night~: 35	-	-	No monitoring for month
R6	-	-	-	-	-	Day, Evening & Night~: 35	-	-	No monitoring for month

~Note Sunnyside mine does not operate during night hours, hence no measurements are taken.

Table 4 – Monitoring (Blasts – Limits Apply)

Location	Parameter	Units of Measure	Frequency	No. of Blasts for the Month	Average Value	Max Value	100%ile Limit	(Potential) Non-compliance /breach
R1	Blast Noise	dB (Lin Peak)	Every Blast	1	DNT	DNT	120	No
	Blast Vibration	mm/s	Every Blast	1	DNT	DNT	10	No
R2	Blast Noise	dB (Lin Peak)	Every Blast	1	99.5	99.5	120	No
	Blast Vibration	mm/s	Every Blast	1	0.44	0.44	10	No
R4	Blast Noise	dB (Lin Peak)	Every Blast	1	100.2	100.2	120	No
	Blast Vibration	mm/s	Every Blast	1	0.24	0.24	10	No
R6	Blast Noise	dB (Lin Peak)	Every Blast	1	DNT	DNT	120	No
	Blast Vibration	mm/s	Every Blast	1	DNT	DNT	10	No

DNT – Indicates the blast did not trigger a result at the monitor.

SUNNYSIDE COAL MINE – MONTHLY MONITORING SUMMARY

Figure 1 – EPL 12957 Monitoring Locations





SUNNYSIDE COAL MINE – MONTHLY MONITORING SUMMARY

Site Information

EPL No: 12957

EPA Website Link: <http://www.environment.nsw.gov.au/prpoeoapp/ViewPOEOLicence.aspx?DOCID=31541&SYSUID=1&LICID=12957>

Licensee: Namoi Mining Pty Ltd

Licensee Address: Sunnyside Coal Project, 259 Coocooboona Lane, GUNNEDAH NSW 2380

EPL Monitoring Points: See Figure 1 below

Sampling Period: July 2012

Publication Date: 23rd August 2012 (re-published 9th September 2014)

Table 1 - No Pollutant Limits Apply

EPL ID	Pollutant	Units of Measure	Monitoring Frequency	No. of Samples for the Month	Date(s) Sampled	Date Obtained	Min Value	Mean Value	Median Value	Max Value
1	Particulates-Deposited Matter	g/m ² /month	Continuous	1	19/7/2012	25/7/2012	1.1	1.1	1.1	1.1
2	Particulates-Deposited Matter	g/m ² /month	Continuous	1	19/7/2012	25/7/2012	0.8	0.8	0.8	0.8
4	Particulates-Deposited Matter	g/m ² /month	Continuous	1	19/7/2012	25/7/2012	2.3	2.3	2.3	2.3
5	Particulates-Deposited Matter	g/m ² /month	Continuous	1	19/7/2012	25/7/2012	1.7	1.7	1.7	1.7
6	Particulates-Deposited Matter	g/m ² /month	Continuous	1	19/7/2012	25/7/2012	0.7	0.7	0.7	0.7
7	PM ₁₀	µg/m ³	Every 6 days	6	1,7,13,19,25,31/7/2012	14/8/2012	7.2	8.3	8.0	7.2
9	Conductivity	µS/cm	Special Frequency 1*	0	-	-	-	-	-	-
	Total organic carbon	mg/L		0	-	-	-	-	-	-
10	Conductivity	µS/cm	Special Frequency 1*	0	-	-	-	-	-	-
	Total organic carbon	mg/L		0	-	-	-	-	-	-



SUNNYSIDE COAL MINE – MONTHLY MONITORING SUMMARY

11	TSS	mg/L	Special Frequency 2**	0	-	-	-	-	-	-
	Conductivity	µS/cm		0	-	-	-	-	-	-
	Oil & Grease	mg/L		0	-	-	-	-	-	-
	pH	pH		0	-	-	-	-	-	-
	Total organic carbon	mg/L		0	-	-	-	-	-	-
12	TSS	mg/L	Special Frequency 2**	0	-	-	-	-	-	-
	Conductivity	µS/cm		0	-	-	-	-	-	-
	Oil & Grease	mg/L		0	-	-	-	-	-	-
	pH	pH		0	-	-	-	-	-	-
	Total organic carbon	mg/L		0	-	-	-	-	-	-

* Special Frequency 1 means the collection of samples as soon as practicable after each discharge commences and in any case not more than 12 hours after each discharge commences.

**Special Frequency 2 means collection of samples quarterly (in the event of flow during the quarter) at a time when there is flow and as soon as practicable after each wet weather discharge from points 9 and 10 commences and in any case not more than 12 hours after each discharge commences.

Table 2 - Pollutant Limits Apply

EPL ID	Pollutant	Units of Measure	Monitoring Frequency	No. of Samples for the Month	Date Sampled	Date Obtained	Min Value	Max Value	100%ile Limit	Exceedance (Yes/No)	Comments
9	TSS	mg/L	Special Frequency 1*	0	-	-	-	-	50	-	No discharge
	Oil & Grease	mg/L		0	-	-	-	-	10	-	No discharge
	pH	pH		0	-	-	-	-	6.5-8.5	-	No discharge
10	TSS	mg/L	Special Frequency 1*	0	-	-	-	-	50	-	No discharge
	Oil & Grease	mg/L		0	-	-	-	-	10	-	No discharge
	pH	pH		0	-	-	-	-	6.5-8.5	-	No discharge



SUNNYSIDE COAL MINE – MONTHLY MONITORING SUMMARY

Table 3 – Monitoring (Noise – Limits Apply)

EPL ID	Date	Start Time	Measurement Period	Measured Levels – dB(A)	Measured Levels – dB(A)	Limit(s)	Weather	Compliant (Yes/No)	Comments
				L _{eq} 15min Day	L _{eq} 15min Evening				
R2	-	-	-	-	-	Day, Evening & Night~: 35	-	-	No monitoring for month
R4	-	-	-	-	-	Day, Evening & Night~: 35	-	-	No monitoring for month
R5	-	-	-	-	-	Day, Evening & Night~: 35	-	-	No monitoring for month
R6	-	-	-	-	-	Day, Evening & Night~: 35	-	-	No monitoring for month

~Note Sunnyside mine does not operate during night hours, hence no measurements are taken.

Table 4 – Monitoring (Blasts – Limits Apply)

Location	Parameter	Units of Measure	Frequency	No. of Blasts for the Month	Average Value	Max Value	100%ile Limit	(Potential) Non-compliance /breach
R1	Blast Noise	dB (Lin Peak)	Every Blast	3	106.2	108.9	120	No
	Blast Vibration	mm/s	Every Blast	3	0.38	0.70	10	No
R2	Blast Noise	dB (Lin Peak)	Every Blast	3	106.9	106.9	120	No
	Blast Vibration	mm/s	Every Blast	3	0.48	0.48	10	No
R4	Blast Noise	dB (Lin Peak)	Every Blast	3	104.9	108.9	120	No
	Blast Vibration	mm/s	Every Blast	3	0.24	0.25	10	No
R6	Blast Noise	dB (Lin Peak)	Every Blast	3	108	109.9	120	No
	Blast Vibration	mm/s	Every Blast	3	0.43	0.80	10	No

DNT – Indicates the blast did not trigger a result at the monitor.

SUNNYSIDE COAL MINE – MONTHLY MONITORING SUMMARY

Figure 1 – EPL 12957 Monitoring Locations





SUNNYSIDE COAL MINE – MONTHLY MONITORING SUMMARY

Site Information

EPL No: 12957

EPA Website Link: <http://www.environment.nsw.gov.au/prpoeoapp/ViewPOEOLicence.aspx?DOCID=31541&SYSUID=1&LICID=12957>

Licensee: Namoi Mining Pty Ltd

Licensee Address: Sunnyside Coal Project, 259 Coocooboona Lane, GUNNEDAH NSW 2380

EPL Monitoring Points: See Figure 1 below

Sampling Period: August 2012

Publication Date: 19th September 2012 (re-published 9th September 2014)

Table 1 - No Pollutant Limits Apply

EPL ID	Pollutant	Units of Measure	Monitoring Frequency	No. of Samples for the Month	Date(s) Sampled	Date Obtained	Min Value	Mean Value	Median Value	Max Value
1	Particulates-Deposited Matter	g/m ² /month	Continuous	1	20/8/2012	29/8/2012	0.3	0.3	0.3	0.3
2	Particulates-Deposited Matter	g/m ² /month	Continuous	1	20/8/2012	29/8/2012	0.2	0.2	0.2	0.2
4	Particulates-Deposited Matter	g/m ² /month	Continuous	1	20/8/2012	29/8/2012	0.4	0.4	0.4	0.4
5	Particulates-Deposited Matter	g/m ² /month	Continuous	1	20/8/2012	29/8/2012	0.3	0.3	0.3	0.3
6	Particulates-Deposited Matter	g/m ² /month	Continuous	1	20/8/2012	29/8/2012	0.2	0.2	0.2	0.2
7	PM ₁₀	µg/m ³	Every 6 days	6	6,12,18,24,30/2012	13/9/2012	10.2	13.9	12.2	19.5
9	Conductivity	µS/mg	Special Frequency 1*	0	-	-	-	-	-	-
	Total organic carbon	mg/L		0	-	-	-	-	-	-
10	Conductivity	µS/mg	Special Frequency 1*	0	-	-	-	-	-	-
	Total organic carbon	mg/L		0	-	-	-	-	-	-

SUNNYSIDE COAL MINE – MONTHLY MONITORING SUMMARY

11	TSS	mg/L	Special Frequency 2**	0	-	-	-	-	-	-
	Conductivity	µS/mg		0	-	-	-	-	-	-
	Oil & Grease	mg/L		0	-	-	-	-	-	-
	pH	pH		0	-	-	-	-	-	-
	Total organic carbon	mg/L		0	-	-	-	-	-	-
12	TSS	mg/L	Special Frequency 2**	0	-	-	-	-	-	-
	Conductivity	µS/mg		0	-	-	-	-	-	-
	Oil & Grease	mg/L		0	-	-	-	-	-	-
	pH	pH		0	-	-	-	-	-	-
	Total organic carbon	mg/L		0	-	-	-	-	-	-

* Special Frequency 1 means the collection of samples as soon as practicable after each discharge commences and in any case not more than 12 hours after each discharge commences.

** Special Frequency 2 means collection of samples quarterly (in the event of flow during the quarter) at a time when there is flow and as soon as practicable after each wet weather discharge from points 9 and 10 commences and in any case not more than 12 hours after each discharge commences.

Table 2 - Pollutant Limits Apply

EPL ID	Pollutant	Units of Measure	Monitoring Frequency	No. of Samples for the Month	Date Sampled	Date Obtained	Min Value	Max Value	100%ile Limit	Exceedance (Yes/No)	Comments
9	TSS	mg/L	Special Frequency 1*	0	-	-	-	-	50	-	No discharge
	Oil & Grease	mg/L		0	-	-	-	-	10	-	No discharge
	pH	pH		0	-	-	-	-	6.5-8.5	-	No discharge
10	TSS	mg/L	Special Frequency 1*	0	-	-	-	-	50	-	No discharge
	Oil & Grease	mg/L		0	-	-	-	-	10	-	No discharge
	pH	pH		0	-	-	-	-	6.5-8.5	-	No discharge



SUNNYSIDE COAL MINE – MONTHLY MONITORING SUMMARY

Table 3 – Monitoring (Noise – Limits Apply)

EPL ID	Date	Start Time	Measurement Period	Measured Levels – dB(A)	Measured Levels – dB(A)	Limit(s)	Weather	Compliant (Yes/No)	Comments
				L _{eq} 15min Day	L _{eq} 15min Evening				
R2	-	-	-	-	-	Day, Evening & Night~: 35	-	-	No monitoring for month
R4	-	-	-	-	-	Day, Evening & Night~: 35	-	-	No monitoring for month
R5	-	-	-	-	-	Day, Evening & Night~: 35	-	-	No monitoring for month
R6	-	-	-	-	-	Day, Evening & Night~: 35	-	-	No monitoring for month

~Note Sunnyside mine does not operate during night hours, hence no measurements are taken.

Table 4 – Monitoring (Blasts – Limits Apply)

Location	Parameter	Units of Measure	Frequency	No. of Blasts for the Month	Average Value	Max Value	100%ile Limit	(Potential) Non-compliance /breach
R1	Blast Noise	dB (Lin Peak)	Every Blast	2	102.0	102.1	120	No
	Blast Vibration	mm/s	Every Blast	2	1.0	1.08	10	No
R2	Blast Noise	dB (Lin Peak)	Every Blast	2	106.2	107.5	120	No
	Blast Vibration	mm/s	Every Blast	2	0.48	0.62	10	No
R4	Blast Noise	dB (Lin Peak)	Every Blast	2	106.9	109.7	120	No
	Blast Vibration	mm/s	Every Blast	2	0.31	0.35	10	No
R6	Blast Noise	dB (Lin Peak)	Every Blast	2	112.7	114.8	120	No
	Blast Vibration	mm/s	Every Blast	2	0.89	1.10	10	No

DNT – Indicates the blast did not trigger a result at the monitor.

SUNNYSIDE COAL MINE – MONTHLY MONITORING SUMMARY

Figure 1 – EPL 12957 Monitoring Locations





SUNNYSIDE COAL MINE – MONTHLY MONITORING SUMMARY

Site Information

EPL No: 12957

EPA Website Link: <http://www.environment.nsw.gov.au/prpoeoapp/ViewPOEOLicence.aspx?DOCID=31541&SYSUID=1&LICID=12957>

Licensee: Namoi Mining Pty Ltd

Licensee Address: Sunnyside Coal Project, 259 Coocooboona Lane, GUNNEDAH NSW 2380

EPL Monitoring Points: See Figure 1 below

Sampling Period: September 2012

Publication Date: 18th October 2012 (re-published 9th September 2014)

Table 1 - No Pollutant Limits Apply

EPL ID	Pollutant	Units of Measure	Monitoring Frequency	No. of Samples for the Month	Date(s) Sampled	Date Obtained	Min Value	Mean Value	Median Value	Max Value
1	Particulates-Deposited Matter	g/m ² /month	Continuous	1	19/9/2012	28/9/2012	1.2	1.2	1.2	1.2
2	Particulates-Deposited Matter	g/m ² /month	Continuous	1	19/9/2012	28/9/2012	1.5	1.5	1.5	1.5
4	Particulates-Deposited Matter	g/m ² /month	Continuous	1	19/9/2012	28/9/2012	1.1	1.1	1.1	1.1
5	Particulates-Deposited Matter	g/m ² /month	Continuous	1	19/9/2012	28/9/2012	1.8	1.8	1.8	1.8
6	Particulates-Deposited Matter	g/m ² /month	Continuous	1	19/9/2012	28/9/2012	0.8	0.8	0.8	0.8
7	PM ₁₀	µg/m ³	Every 6 days	6	5,11,17,23,29/9/2012	16/10/2012	8.9	26.1	18.2	49.3
9	Conductivity	µS/cm	Special Frequency 1*	0	-	-	-	-	-	-
	Total organic carbon	mg/L		0	-	-	-	-	-	-
10	Conductivity	µS/cm	Special Frequency 1*	0	-	-	-	-	-	-
	Total organic carbon	mg/L		0	-	-	-	-	-	-



SUNNYSIDE COAL MINE – MONTHLY MONITORING SUMMARY

EPL ID	Pollutant	Units of Measure	Monitoring Frequency	No. of Samples for the Month	Date(s) Sampled	Date Obtained	Min Value	Mean Value	Median Value	Max Value
11	TSS	mg/L	Special Frequency 2**	0	-	-	-	-	-	-
	Conductivity	µS/cm		0	-	-	-	-	-	-
	Oil & Grease	mg/L		0	-	-	-	-	-	-
	pH	pH		0	-	-	-	-	-	-
	Total organic carbon	mg/L								
12	TSS	mg/L	Special Frequency 2**	0	-	-	-	-	-	-
	Conductivity	µS/cm		0	-	-	-	-	-	-
	Oil & Grease	mg/L		0	-	-	-	-	-	-
	pH	pH		0	-	-	-	-	-	-
	Total organic carbon	mg/L								

* Special Frequency 1 means the collection of samples as soon as practicable after each discharge commences and in any case not more than 12 hours after each discharge commences.

** Special Frequency 2 means collection of samples quarterly (in the event of flow during the quarter) at a time when there is flow and as soon as practicable after each wet weather discharge from points 9 and 10 commences and in any case not more than 12 hours after each discharge commences.

Table 2 - Pollutant Limits Apply

EPL ID	Pollutant	Units of Measure	Monitoring Frequency	No. of Samples for the Month	Date Sampled	Date Obtained	Min Value	Max Value	100%ile Limit	Exceedance (Yes/No)	Comments
9	TSS	mg/L	Special Frequency 1*	0	-	-	-	-	50	-	No discharge
	Oil & Grease	mg/L		0	-	-	-	-	10	-	No discharge
	pH	pH		0	-	-	-	-	6.5-8.5	-	No discharge
10	TSS	mg/L	Special Frequency 1*	0	-	-	-	-	50	-	No discharge
	Oil & Grease	mg/L		0	-	-	-	-	10	-	No discharge
	pH	pH		0	-	-	-	-	6.5-8.5	-	No discharge

SUNNYSIDE COAL MINE – MONTHLY MONITORING SUMMARY
Table 3 – Monitoring (Noise – Limits Apply)

EPL ID	Date	Start Time	Measurement Period	Measured Levels – dB(A) L _{eq} 15min Day	Measured Levels – dB(A) L _{eq} 15min Evening	Limit	Wind speed/ direction	Compliant (Yes/No)	Comments
R2	-	-	-	-	-	35 dB(A) Leq (15 min)	-	-	No access to property
R4	17/9/2012	3:55pm	90min	25		35 dB(A) Leq (15 min)	3 m/s NW	Yes	
		7:30pm	30min		<20		0.5 m/s SE	Yes	
	18/9/2012	12:49pm	90min	<20			1.5 m/s NW	Yes	
		8:40pm	30min		Inaudible		1 m/s N	Yes	
	19/9/2012	2:08pm	90min	Inaudible			1.5 m/s, NW	Yes	
		6:26pm	30min		Inaudible		Calm	Yes	
R5	17/9/2012	12:25pm	90min	Inaudible		35 dB(A) Leq (15 min)	2 m/s NW	Yes	
		8:10pm	30min		21		Calm	Yes	
	18/9/2012	2:27pm	90min	Inaudible			1 m/s N	Yes	
		8:03pm	30min		Inaudible		1 m/s N	Yes	
	19/9/2012	12:34pm	90min	Inaudible			1.5 m/s NW	Yes	
		6:59pm	30min		<20		Calm	Yes	
R6	17/9/2012	2:02 pm	90min	22		35 dB(A) Leq (15 min)	1.5 m/s NW	Yes	
		6:48 pm	30min		21		0.5 m/s SE	Yes	
	18/9/2012	-	90min	-			3 m/s NW	-	Raining – no mining
		9:19 pm	30min		Inaudible		0.5 m/s N	Yes	
	19/9/2012	4:05 pm	90min	25			0.5 m/s NW	Yes	
		7:30 pm	30min		39		Calm	Yes	Private agreement in place

Note Sunnyside mine does not operate during night hours, hence no measurements are taken.



SUNNYSIDE COAL MINE – MONTHLY MONITORING SUMMARY

Table 4 – Monitoring (Blasts – Limits Apply)

Location	Parameter	Units of Measure	Frequency	No. of Blasts for the Month	Average Value	Max Value	100%ile Limit	(Potential) Non-compliance /breach
R1	Blast Noise	dB (Lin Peak)	Every Blast	1	DNT	DNT	120	No
	Blast Vibration	mm/s			DNT	DNT	10	No
R2	Blast Noise	dB (Lin Peak)	Every Blast	1	104.9	104.9	120	No
	Blast Vibration	mm/s			0.79	0.79	10	No
R4	Blast Noise	dB (Lin Peak)	Every Blast	1	107.5	107.5	120	No
	Blast Vibration	mm/s			0.46	0.46	10	No
R6	Blast Noise	dB (Lin Peak)	Every Blast	1	111.2	111.2	120	No
	Blast Vibration	mm/s			1.08	1.08	10	No

DNT – Indicates the blast did not trigger a result at the monitor.

SUNNYSIDE COAL MINE – MONTHLY MONITORING SUMMARY

Figure 1 – EPL 12957 Monitoring Locations





SUNNYSIDE COAL MINE – MONTHLY MONITORING SUMMARY

Site Information

EPL No: 12957

EPA Website Link: <http://www.environment.nsw.gov.au/prpoeoapp/ViewPOEOLicence.aspx?DOCID=31541&SYSUID=1&LICID=12957>

Licensee: Namoi Mining Pty Ltd

Licensee Address: Sunnyside Coal Project, 259 Coocooboona Lane, GUNNEDAH NSW 2380

EPL Monitoring Points: See Figure 1 below

Sampling Period: October 2012

Publication Date: 21st November 2012 (re-published 9th September 2014)

Table 1 - No Pollutant Limits Apply

EPL ID	Pollutant	Units of Measure	Monitoring Frequency	No. of Samples for the Month	Date(s) Sampled	Date Obtained	Min Value	Mean Value	Median Value	Max Value
1	Particulates-Deposited Matter	g/m ² /month	Continuous	1	19/10/2012	30/10/2012	1.0	1.0	1.0	1.0
2	Particulates-Deposited Matter	g/m ² /month	Continuous	1	19/10/2012	30/10/2012	1.2	1.2	1.2	1.2
4	Particulates-Deposited Matter	g/m ² /month	Continuous	1	19/10/2012	30/10/2012	1.7	1.7	1.7	1.7
5	Particulates-Deposited Matter	g/m ² /month	Continuous	1	19/10/2012	30/10/2012	0.7	0.7	0.7	0.7
6	Particulates-Deposited Matter	g/m ² /month	Continuous	1	19/10/2012	30/10/2012	1.4	1.4	1.4	1.4
7	PM ₁₀	µg/m ³	Every 6 days	5	5,11,17,23,29/10/2012	12/11/2012	11.4	21.5	18.7	36.5
9	Conductivity	µS/cm	Special Frequency 1*	0	-	-	-	-	-	-
	Total organic carbon	mg/L		0	-	-	-	-	-	-
10	Conductivity	µS/cm	Special Frequency 1*	0	-	-	-	-	-	-
	Total organic carbon	mg/L		0	-	-	-	-	-	-
11	TSS	mg/L	Special Frequency	0	-	-	-	-	-	-
	Conductivity	µS/cm		0	-	-	-	-	-	-



SUNNYSIDE COAL MINE – MONTHLY MONITORING SUMMARY

EPL ID	Pollutant	Units of Measure	Monitoring Frequency	No. of Samples for the Month	Date(s) Sampled	Date Obtained	Min Value	Mean Value	Median Value	Max Value
	Oil & Grease	mg/L	2**	0	-	-	-	-	-	-
	pH	pH		0	-	-	-	-	-	-
	Total organic carbon	mg/L		0	-	-	-	-	-	-
12	TSS	mg/L	Special Frequency 2**	0	-	-	-	-	-	-
	Conductivity	µS/cm		0	-	-	-	-	-	-
	Oil & Grease	mg/L		0	-	-	-	-	-	-
	pH	pH		0	-	-	-	-	-	-
	Total organic carbon	mg/L		0	-	-	-	-	-	-

* Special Frequency 1 means the collection of samples as soon as practicable after each discharge commences and in any case not more than 12 hours after each discharge commences.

** Special Frequency 2 means collection of samples quarterly (in the event of flow during the quarter) at a time when there is flow and as soon as practicable after each wet weather discharge from points 9 and 10 commences and in any case not more than 12 hours after each discharge commences.

Table 2 - Pollutant Limits Apply

EPL ID	Pollutant	Units of Measure	Monitoring Frequency	No. of Samples for the Month	Date Sampled	Date Obtained	Min Value	Max Value	100%ile Limit	Exceedance (Yes/No)	Comments
9	TSS	mg/L	Special Frequency 1*	0	-	-	-	-	50	-	No discharge
	Oil & Grease	mg/L		0	-	-	-	-	10	-	No discharge
	pH	pH		0	-	-	-	-	6.5-8.5	-	No discharge
10	TSS	mg/L	Special Frequency 1*	0	-	-	-	-	50	-	No discharge
	Oil & Grease	mg/L		0	-	-	-	-	10	-	No discharge
	pH	pH		0	-	-	-	-	6.5-8.5	-	No discharge



SUNNYSIDE COAL MINE – MONTHLY MONITORING SUMMARY

Table 3 – Monitoring (Noise – Limits Apply)

EPL ID	Date	Start Time	Measurement Period	Measured Levels – dB(A)	Measured Levels – dB(A)	Limit	Wind speed/ direction	Compliant (Yes/No)	Comments
				L _{eq} 15min Day	L _{eq} 15min Evening				
R2	-	-	-	-	-	35 dB(A) Leq (15 min)	-	-	No monitoring
R4	-	-	90min	-		35 dB(A) Leq (15 min)	-	-	No monitoring
		-	30min		-		-	-	No monitoring
	-	-	90min	-			-	-	No monitoring
		-	30min		-		-	-	No monitoring
	-	-	90min	-			-	-	No monitoring
		-	30min		-		-	-	No monitoring
R5	-	-	90min	-		35 dB(A) Leq (15 min)	-	-	No monitoring
		-	30min		-		-	-	No monitoring
	-	-	90min	-			-	-	No monitoring
		-	30min		-		-	-	No monitoring
	-	-	90min	-			-	-	No monitoring
		-	30min		-		-	-	No monitoring
R6	-	-	90min	-		35 dB(A) Leq (15 min)	-	-	No monitoring
		-	30min		-		-	-	No monitoring
	-	-	90min	-			-	-	No monitoring
		-	30min		-		-	-	No monitoring
	-	-	90min	-			-	-	No monitoring
		-	30min		-		-	-	No monitoring

Note Sunnyside mine does not operate during night hours, hence no measurements are taken



SUNNYSIDE COAL MINE – MONTHLY MONITORING SUMMARY

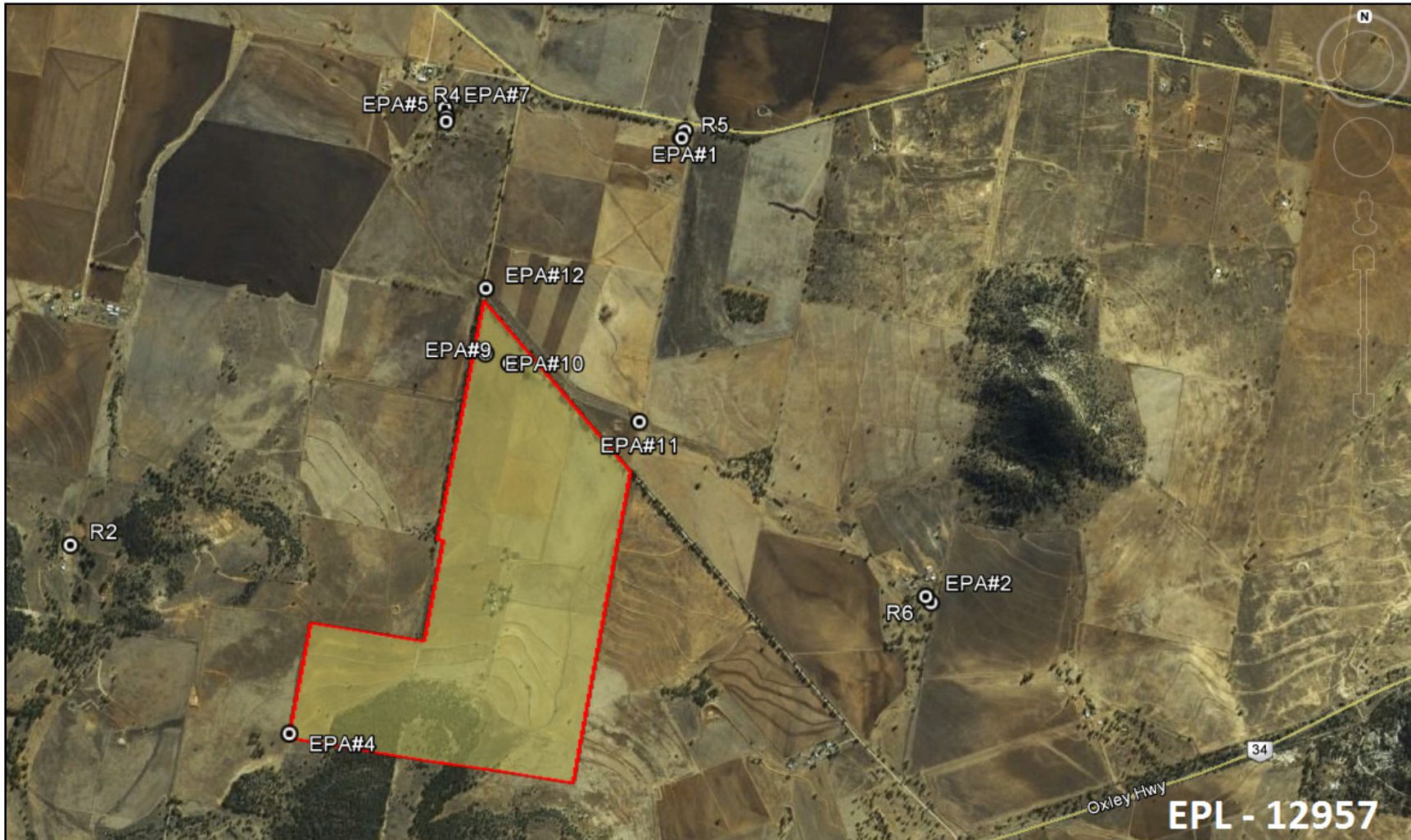
Table 4 – Monitoring (Blasts – Limits Apply)

Location	Parameter	Units of Measure	Frequency	No. of Blasts for the Month	Average Value	Max Value	100%ile Limit	(Potential) Non-compliance /breach
R1	Blast Noise	dB (Lin Peak)	Every Blast	0	-	-	120	No
	Blast Vibration	mm/s			-	-	10	No
R2	Blast Noise	dB (Lin Peak)	Every Blast	0	-	-	120	No
	Blast Vibration	mm/s			-	-	10	No
R4	Blast Noise	dB (Lin Peak)	Every Blast	0	-	-	120	No
	Blast Vibration	mm/s			-	-	10	No
R6	Blast Noise	dB (Lin Peak)	Every Blast	0	-	-	120	No
	Blast Vibration	mm/s			-	-	10	No

DNT – Indicates the blast did not trigger a result at the monitor.

SUNNYSIDE COAL MINE – MONTHLY MONITORING SUMMARY

Figure 1 – EPL 12957 Monitoring Locations





SUNNYSIDE COAL MINE – MONTHLY MONITORING SUMMARY

Site Information

EPL No: 12957

EPA Website Link: <http://www.environment.nsw.gov.au/prpoeoapp/ViewPOEOLicence.aspx?DOCID=31541&SYSUID=1&LICID=12957>

Licensee: Namoi Mining Pty Ltd

Licensee Address: Sunnyside Coal Project, 259 Coocooboona Lane, GUNNEDAH NSW 2380

EPL Monitoring Points: See Figure 1 below

Sampling Period: November 2012

Publication Date: 13th December 2012 (re-published 9th September 2014)

Table 1 - No Pollutant Limits Apply

EPL ID	Pollutant	Units of Measure	Monitoring Frequency	No. of Samples for the Month	Date(s) Sampled	Date Obtained	Min Value	Mean Value	Median Value	Max Value
1	Particulates-Deposited Matter	g/m ² /month	Continuous	1	20/11/2012	27/11/2012	0.8	0.8	0.8	0.8
2	Particulates-Deposited Matter	g/m ² /month	Continuous	1	20/11/2012	27/11/2012	0.7	0.7	0.7	0.7
4	Particulates-Deposited Matter	g/m ² /month	Continuous	1	20/11/2012	27/11/2012	0.5	0.5	0.5	0.5
5	Particulates-Deposited Matter	g/m ² /month	Continuous	1	20/11/2012	27/11/2012	2.2	2.2	2.2	2.2
6	Particulates-Deposited Matter	g/m ² /month	Continuous	1	20/11/2012	27/11/2012	1.2	1.2	1.2	1.2
7	PM ₁₀	µg/m ³	Every 6 days	5	4,10,16,22,28/11/2012	12/12/2012	12.4	17	15.6	23.3
9	Conductivity	µS/cm	Special Frequency 1*	0	-	-	-	-	-	-
	Total organic carbon	mg/L		0	-	-	-	-	-	-
10	Conductivity	µS/cm	Special Frequency 1*	0	-	-	-	-	-	-
	Total organic carbon	mg/L		0	-	-	-	-	-	-
11	TSS	mg/L	Special Frequency 2**	0	-	-	-	-	-	-
	Conductivity	µS/cm		0	-	-	-	-	-	-
	Oil & Grease	mg/L		0	-	-	-	-	-	-



SUNNYSIDE COAL MINE – MONTHLY MONITORING SUMMARY

EPL ID	Pollutant	Units of Measure	Monitoring Frequency	No. of Samples for the Month	Date(s) Sampled	Date Obtained	Min Value	Mean Value	Median Value	Max Value
	pH	pH		0	-	-	-	-	-	-
	Total organic carbon	mg/L		0	-	-	-	-	-	-
12	TSS	mg/L	Special Frequency 2**	0	-	-	-	-	-	-
	Conductivity	µS/cm		0	-	-	-	-	-	-
	Oil & Grease	mg/L		0	-	-	-	-	-	-
	pH	pH		0	-	-	-	-	-	-
	Total organic carbon	mg/L		0	-	-	-	-	-	-

* Special Frequency 1 means the collection of samples as soon as practicable after each discharge commences and in any case not more than 12 hours after each discharge commences.

** Special Frequency 2 means collection of samples quarterly (in the event of flow during the quarter) at a time when there is flow and as soon as practicable after each wet weather discharge from points 9 and 10 commences and in any case not more than 12 hours after each discharge commences.

Table 2 - Pollutant Limits Apply

EPL ID	Pollutant	Units of Measure	Monitoring Frequency	No. of Samples for the Month	Date Sampled	Date Obtained	Min Value	Max Value	100%ile Limit	Exceedance (Yes/No)	Comments
9	TSS	mg/L	Special Frequency 1*	0	-	-	-	-	50	-	No discharge
	Oil & Grease	mg/L		0	-	-	-	-	10	-	No discharge
	pH	pH		0	-	-	-	-	6.5-8.5	-	No discharge
10	TSS	mg/L	Special Frequency 1*	0	-	-	-	-	50	-	No discharge
	Oil & Grease	mg/L		0	-	-	-	-	10	-	No discharge
	pH	pH		0	-	-	-	-	6.5-8.5	-	No discharge



SUNNYSIDE COAL MINE – MONTHLY MONITORING SUMMARY

Table 3 – Monitoring (Noise – Limits Apply)

EPL ID	Date	Start Time	Measurement Period	Measured Levels – dB(A)	Measured Levels – dB(A)	Limit	Wind speed/ direction	Compliant (Yes/No)	Comments
				L _{eq} 15min Day	L _{eq} 15min Evening				
R2	-	-	-	-	-	35 dB(A) Leq (15 min)	-	-	No monitoring
R4	-	-	90min	-		35 dB(A) Leq (15 min)	-	-	No monitoring
		-	30min		-		-	No monitoring	
	-	-	90min	-			-	-	No monitoring
		-	30min		-		-	No monitoring	
	-	-	90min	-			-	-	No monitoring
		-	30min		-		-	No monitoring	
R5	-	-	90min	-		35 dB(A) Leq (15 min)	-	-	No monitoring
		-	30min		-		-	No monitoring	
	-	-	90min	-			-	-	No monitoring
		-	30min		-		-	No monitoring	
	-	-	90min	-			-	-	No monitoring
		-	30min		-		-	No monitoring	
R6	-	-	90min	-		35 dB(A) Leq (15 min)	-	-	No monitoring
		-	30min		-		-	No monitoring	
	-	-	90min	-			-	-	No monitoring
		-	30min		-		-	No monitoring	
	-	-	90min	-			-	-	No monitoring
		-	30min		-		-	No monitoring	

Note Sunnyside mine does not operate during night hours, hence no measurements are taken



SUNNYSIDE COAL MINE – MONTHLY MONITORING SUMMARY

Table 4 – Monitoring (Blasts – Limits Apply)

Location	Parameter	Units of Measure	Frequency	No. of Blasts for the Month	Average Value	Max Value	100%ile Limit	(Potential) Non-compliance /breach
R1	Blast Noise	dB (Lin Peak)	Every Blast	0	-	-	120	No
	Blast Vibration	mm/s			-	-	10	No
R2	Blast Noise	dB (Lin Peak)	Every Blast	0	-	-	120	No
	Blast Vibration	mm/s			-	-	10	No
R4	Blast Noise	dB (Lin Peak)	Every Blast	0	-	-	120	No
	Blast Vibration	mm/s			-	-	10	No
R6	Blast Noise	dB (Lin Peak)	Every Blast	0	-	-	120	No
	Blast Vibration	mm/s			-	-	10	No

DNT – Indicates the blast did not trigger a result at the monitor.

SUNNYSIDE COAL MINE – MONTHLY MONITORING SUMMARY

Figure 1 – EPL 12957 Monitoring Locations





SUNNYSIDE COAL MINE – MONTHLY MONITORING SUMMARY

Site Information

EPL No: 12957

EPA Website Link: <http://www.environment.nsw.gov.au/prpoeoapp/ViewPOEOLicence.aspx?DOCID=31541&SYSUID=1&LICID=12957>

Licensee: Namoi Mining Pty Ltd

Licensee Address: Sunnyside Coal Project, 259 Coccoofoonah Lane, GUNNEDAH NSW 2380

EPL Monitoring Points: See Figure 1 below

Sampling Period: December 2012

Publication Date: 15th January 2013 (re-published 9th September 2014)

Table 1 - No Pollutant Limits Apply

EPL ID	Pollutant	Units of Measure	Monitoring Frequency	No. of Samples for the Month	Date(s) Sampled	Date Obtained	Min Value	Mean Value	Median Value	Max Value
1	Particulates-Deposited Matter	g/m ² /month	Continuous	1	19/12/2012	2/1/2013	3.0	3.0	3.0	3.0
2	Particulates-Deposited Matter	g/m ² /month	Continuous	1	19/12/2012	2/1/2013	1.6	1.6	1.6	1.6
4	Particulates-Deposited Matter	g/m ² /month	Continuous	1	19/12/2012	2/1/2013	1.3	1.3	1.3	1.3
5	Particulates-Deposited Matter	g/m ² /month	Continuous	1	19/12/2012	2/1/2013	0.8	0.8	0.8	0.8
6	Particulates-Deposited Matter	g/m ² /month	Continuous	1	19/12/2012	2/1/2013	2.0	2.0	2.0	2.0
7	PM ₁₀	µg/m ³	Every 6 days	5	4,10,16,22,28/12/2012	10/1/2013	6.7	10.8	9.8	16.4
9	Conductivity	µS/cm	Special Frequency 1*	0	-	-	-	-	-	-
	Total organic carbon	mg/L		0	-	-	-	-	-	-
10	Conductivity	µS/cm	Special Frequency 1*	0	-	-	-	-	-	-
	Total organic carbon	mg/L		0	-	-	-	-	-	-



SUNNYSIDE COAL MINE – MONTHLY MONITORING SUMMARY

EPL ID	Pollutant	Units of Measure	Monitoring Frequency	No. of Samples for the Month	Date(s) Sampled	Date Obtained	Min Value	Mean Value	Median Value	Max Value
11	TSS	mg/L	Special Frequency 2**	0	-	-	-	-	-	-
	Conductivity	µS/cm		0	-	-	-	-	-	-
	Oil & Grease	mg/L		0	-	-	-	-	-	-
	pH	pH		0	-	-	-	-	-	-
	Total organic carbon	mg/L								
12	TSS	mg/L	Special Frequency 2**	0	-	-	-	-	-	-
	Conductivity	µS/cm		0	-	-	-	-	-	-
	Oil & Grease	mg/L		0	-	-	-	-	-	-
	pH	pH		0	-	-	-	-	-	-
	Total organic carbon	mg/L								

* Special Frequency 1 means the collection of samples as soon as practicable after each discharge commences and in any case not more than 12 hours after each discharge commences.

** Special Frequency 2 means collection of samples quarterly (in the event of flow during the quarter) at a time when there is flow and as soon as practicable after each wet weather discharge from points 9 and 10 commences and in any case not more than 12 hours after each discharge commences.

Table 2 - Pollutant Limits Apply

EPL ID	Pollutant	Units of Measure	Monitoring Frequency	No. of Samples for the Month	Date Sampled	Date Obtained	Min Value	Max Value	100%ile Limit	Exceedance (Yes/No)	Comments
9	TSS	mg/L	Special Frequency 1*	0	-	-	-	-	50	-	No discharge
	Oil & Grease	mg/L		0	-	-	-	-	10	-	No discharge
	pH	pH		0	-	-	-	-	6.5-8.5	-	No discharge
10	TSS	mg/L	Special Frequency 1*	0	-	-	-	-	50	-	No discharge
	Oil & Grease	mg/L		0	-	-	-	-	10	-	No discharge
	pH	pH		0	-	-	-	-	6.5-8.5	-	No discharge



SUNNYSIDE COAL MINE – MONTHLY MONITORING SUMMARY

Table 3 – Monitoring (Noise – Limits Apply)

EPL ID	Date	Start Time	Measurement Period	Measured Levels – dB(A)	Measured Levels – dB(A)	Limit	Wind speed/ direction	Compliant (Yes/No)	Comments
				L _{eq} 15min Day	L _{eq} 15min Evening				
R2	-	-	-	-	-	35 dB(A) Leq (15 min)	-	-	No monitoring
R4	-	-	90min	-		35 dB(A) Leq (15 min)	-	-	No monitoring
		-	30min		-		-	-	No monitoring
	-	-	90min	-			-	-	No monitoring
		-	30min		-		-	-	No monitoring
	-	-	90min	-			-	-	No monitoring
		-	30min		-		-	-	No monitoring
R5	-	-	90min	-		35 dB(A) Leq (15 min)	-	-	No monitoring
		-	30min		-		-	-	No monitoring
	-	-	90min	-			-	-	No monitoring
		-	30min		-		-	-	No monitoring
	-	-	90min	-			-	-	No monitoring
		-	30min		-		-	-	No monitoring
R6	-	-	90min	-		35 dB(A) Leq (15 min)	-	-	No monitoring
		-	30min		-		-	-	No monitoring
	-	-	90min	-			-	-	No monitoring
		-	30min		-		-	-	No monitoring
	-	-	90min	-			-	-	No monitoring
		-	30min		-		-	-	No monitoring

Note Sunnyside mine does not operate during night hours, hence no measurements are taken



SUNNYSIDE COAL MINE – MONTHLY MONITORING SUMMARY

Table 4 – Monitoring (Blasts – Limits Apply)

Location	Parameter	Units of Measure	Frequency	No. of Blasts for the Month	Average Value	Max Value	100%ile Limit	(Potential) Non-compliance /breach
R1	Blast Noise	dB (Lin Peak)	Every Blast	0	-	-	120	No
	Blast Vibration	mm/s			-	-	10	No
R2	Blast Noise	dB (Lin Peak)	Every Blast	0	-	-	120	No
	Blast Vibration	mm/s			-	-	10	No
R4	Blast Noise	dB (Lin Peak)	Every Blast	0	-	-	120	No
	Blast Vibration	mm/s			-	-	10	No
R6	Blast Noise	dB (Lin Peak)	Every Blast	0	-	-	120	No
	Blast Vibration	mm/s			-	-	10	No

DNT – Indicates the blast did not trigger a result at the monitor.

SUNNYSIDE COAL MINE – MONTHLY MONITORING SUMMARY

Figure 1 – EPL 12957 Monitoring Locations





SUNNYSIDE COAL MINE – MONTHLY MONITORING SUMMARY CORRECTION LOG

Site Information

EPL No: 12957

EPA Website Link: <http://www.environment.nsw.gov.au/prpoeoapp/ViewPOEOLicence.aspx?DOCID=32488&SYSUID=1&LICID=12957>

Licensee: Namoi Mining Pty Ltd

Licensee Address: Sunnyside Coal Project, 259 Coccoo boonah Lane, GUNNEDAH NSW 2380

EPL Monitoring Points: See Figure 1 below

Sample Point/s	Sample Date	Original Data	Corrected Data	Date Corrected	Date Originally Published	Reason
9 and 10	April 2012			9/09/2014	22/06/2012	The EPL requires monitoring of five pollutants but limits only apply to three of those pollutants. The two other pollutants (Electrical Conductivity and Total Organic Carbon) were unintentionally excluded from reporting and have now been included.
	May 2012			9/09/2014	22/06/2012	
	June 2012			9/09/2014	24/07/2012	
	July 2012			9/09/2014	23/08/2012	
	August 2012			9/09/2014	19/09/2012	
	September 2012			9/09/2014	18/10/2012	
	October 2012			9/09/2014	21/11/2012	
	November 2012			9/09/2014	13/12/2012	
	December 2012			9/09/2014	15/01/2013	
	January 2013			9/09/2014	21/02/2013	
	February 2013			9/09/2014	13/03/2013	
	March 2013			9/09/2014	11/04/2013	
	April 2013			9/09/2014	10/05/2013	
	May 2013			9/09/2014	21/06/2013	
	June 2013			9/09/2014	19/07/2013	
	July 2013			9/09/2014	09/08/2013	
	August 2013			9/09/2014	17/09/2013	
	September 2013			9/09/2014	11/10/2013	
	October 2013			9/09/2014	19/11/2013	
	November 2013			9/09/2014	19/12/2013	
December 2013			9/09/2014	16/01/2014		



SUNNYSIDE COAL MINE – MONTHLY MONITORING SUMMARY

CORRECTION LOG

Sample Point/s	Sample Date	Original Data	Corrected Data	Date Corrected	Date Originally Published	Reason
	January 2014			9/09/2014	18/02/2014	The EPL requires monitoring of five pollutants. One of these pollutants (Total Organic Carbon) was unintentionally excluded from reporting and has now been included.
	February 2014			9/09/2014	14/03/2014	
	March 2014			9/09/2014	23/04/2014	
	April 2014			9/09/2014	22/05/2014	
	May 2014			9/09/2014	17/06/2014	
11 and 12	April 2012			9/09/2014	22/06/2012	
	May 2012			9/09/2014	22/06/2012	
	June 2012			9/09/2014	24/07/2012	
	July 2012			9/09/2014	23/08/2012	
	August 2012			9/09/2014	19/09/2012	
	September 2012			9/09/2014	18/10/2012	
	October 2012			9/09/2014	21/11/2012	
	November 2012			9/09/2014	13/12/2012	
	December 2012			9/09/2014	15/01/2013	
	January 2013			9/09/2014	21/02/2013	
	February 2013			9/09/2014	13/03/2013	
	March 2013			9/09/2014	11/04/2013	
	April 2013			9/09/2014	10/05/2013	
	May 2013			9/09/2014	21/06/2013	
	June 2013			9/09/2014	19/07/2013	
	July 2013			9/09/2014	09/08/2013	
	August 2013			9/09/2014	17/09/2013	
	September 2013			9/09/2014	11/10/2013	
	October 2013			9/09/2014	19/11/2013	
	November 2013			9/09/2014	19/12/2013	
	December 2013			9/09/2014	16/01/2014	
	January 2014			9/09/2014	18/02/2014	
	February 2014			9/09/2014	14/03/2014	
	March 2014			9/09/2014	23/04/2014	
	April 2014			9/09/2014	22/05/2014	



SUNNYSIDE COAL MINE – MONTHLY MONITORING SUMMARY

CORRECTION LOG

Sample Point/s	Sample Date	Original Data	Corrected Data	Date Corrected	Date Originally Published	Reason
	May 2014			9/09/2014	17/06/2014	
11 and 12	April 2012			9/09/2014	22/06/2012	The units in which Electrical Conductivity are measured were incorrectly shown as ms/cm, this was corrected to µS/cm.
	May 2012			9/09/2014	22/06/2012	
	June 2012			9/09/2014	24/07/2012	
	July 2012			9/09/2014	23/08/2012	
	August 2012			9/09/2014	19/09/2012	
	September 2012			9/09/2014	18/10/2012	
	October 2012			9/09/2014	21/11/2012	
	November 2012			9/09/2014	13/12/2012	
	December 2012			9/09/2014	15/01/2013	
	January 2013			9/09/2014	21/02/2013	
	February 2013			9/09/2014	13/03/2013	
	March 2013			9/09/2014	11/04/2013	
	April 2013			9/09/2014	10/05/2013	
	May 2013			9/09/2014	21/06/2013	
	June 2013			9/09/2014	19/07/2013	
	July 2013			9/09/2014	09/08/2013	
	August 2013			9/09/2014	17/09/2013	
	September 2013			9/09/2014	11/10/2013	
	October 2013			9/09/2014	19/11/2013	
	November 2013			9/09/2014	19/12/2013	
	December 2013			9/09/2014	16/01/2014	
	January 2014			9/09/2014	18/02/2014	
	February 2014			9/09/2014	14/03/2014	
	March 2014			9/09/2014	23/04/2014	
April 2014			9/09/2014	22/05/2014		
May 2014			9/09/2014	17/06/2014		



SUNNYSIDE COAL MINE – MONTHLY MONITORING SUMMARY

CORRECTION LOG

Figure 1 – EPL 12957 Monitoring Locations

