

**Minutes of the 32<sup>nd</sup> Meeting of the  
Sunnyside Coal Mine Community Consultative Committee**

**Meeting Held: 12<sup>th</sup> February 2020**

**Venue:** The meeting was held at Namoi Valley Brickworks at 15:30

**1. Present and Apologies**

**Present:** Michael Broekman (MB) (Chairperson)  
Craig Sullivan (CS) (Operations Superintendent/MEM- Whitehaven)  
Andrew Raal (AR) (Environmental Officer- Whitehaven)

**Apologies:** Colleen Fuller Colleen Fuller (CF) (Gunnedah Shire Council Rep), Ron Fuller (RF)  
Community Representative, Andrew Johns (AJ) (Gunnedah Shire Council); Liz  
Ferguson (LF) (Community Representative)

**2. Previous Minutes**

Minutes of the previous meeting were adopted as a true record on the motion and confirmed by CS and AR.

**3. Business Arising**

MB recommended CCC site visit to mine. MB proposed that meeting be reduced to 6 monthly due reduced activity and as the mine is in final rehabilitation phase.

**4. Operations Report**

- CS gave detailed production report for current financial Year
- Mine has ceased production and coal trucking.
  - 7 operators on site with budget for 11, Reduced work week 45h per week
  - 9.9ha have been rehabilitated to date.
  - Up to November 462 357 m<sup>3</sup> of material have been moved LTIFR 904

**5. Environmental Report**

AR presented environmental monitoring results and records of complaints, which are include in the Environmental Monitoring Report.  
Attended noise monitoring undertaken in mid Dec2019 – no no-conformances.  
Mean levels for depositional dust are below requirements but had elevated levels over the last 3 months. PM10 respirable dust had high levels due to bushfire smoke, regional high winds and dust storms, and drought conditions.

**6. General Business**

None, recommendation made for next CCC to be held at Sunnyside Mine.

**7. Next meeting**

Next meeting scheduled for Wednesday 13<sup>th</sup> August 2020 at 3:00pm, at Sunnyside Mine.

Meeting closed at 15:45

Michael Broekman – Chairperson

# Sunnyside Coal Mine Community Consultative Committee Meeting #32

## Environmental Monitoring Report November - January 2020

### Noise Monitoring

Noise monitoring was conducted over four days 16<sup>th</sup> - 18<sup>th</sup> December 2019. Sunnyside Coal Mine complied with the project specific noise criteria across all measurement locations and periods for Quarter 4 2019.

### Blasting

There has been no blasting during the reporting period.

### Air Quality Monitoring

#### **Deposited Dust**

The annual averages for deposited dusts at all monitoring locations remain below the criteria of 4g/m<sup>2</sup>/month average over 12 month period ending December 2019. There were elevated dust levels at Plain View each month of the last quarter and December showed elevated levels at Lilydale, Ivanhoe and Woodlawn gauges. Table 1 below shows the monthly depositional dust readings at each gauge over the last quarter.

Table 1: Quarterly depositional dust gauge readings

Month	SD1 Ferndale (EPL 1)	SD3 Plain View (EPL 2)	SD4 Lilydale	SD5 Ivanhoe (EPL 4)	SD6 Illili (EPL 5)	SD7 Innisvale (EPL 6)	SD8 Woodlawn
Nov-19	1.6	5.9	1.5	2.7	1.9	1.2	1.0
Dec-19	3.5	6.7	4.2	6.2	3.1	3.9	5.1
Jan-20	3.2	58.5	2.5	2.5	2.1	2.3	3.3
<b>Average</b>	<b>2.77</b>	<b>23.70</b>	<b>2.73</b>	<b>3.80</b>	<b>2.37</b>	<b>2.47</b>	<b>3.13</b>

#### **Dust PM<sub>10</sub> Data**

PM10 dust levels are taken every 6 days at Sunnyside. Table 2 below details each reading over the last quarter. There were several regional dust events over this period contributing to the elevated readings, ie over 50 µg/m<sup>3</sup> per day limit. Investigation into the high readings indicated the causes were due to:

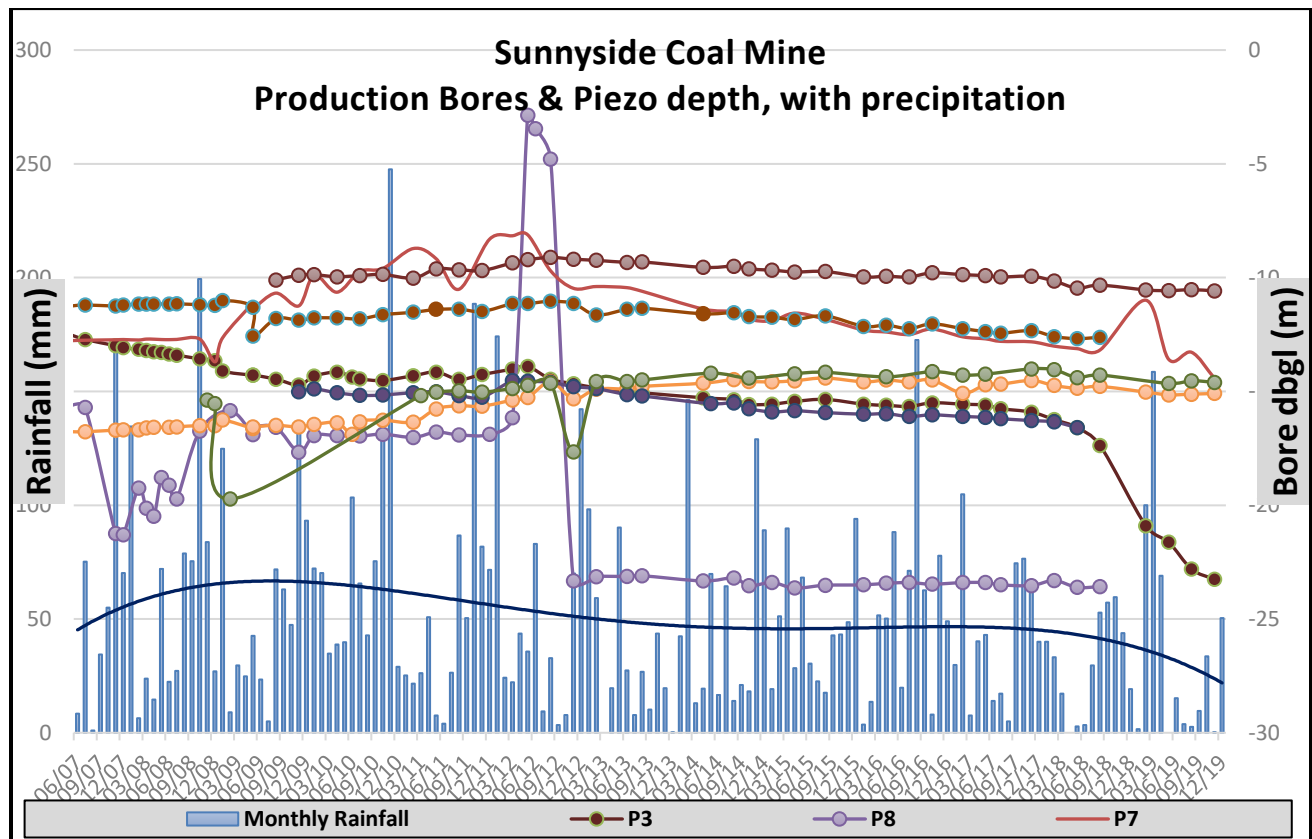
- Bushfire smoke
- Regional high winds and dust storms
- Drought conditions where farm paddocks have been left bare

Table 2: Quarterly Illili PM10 High Volume Air Sampler

Date	mg/paper	$\mu\text{g}/\text{m}^3$	Annual Average
4/11/2019	6.2	4.2	28.46
10/11/2019	50	33.9	28.56
16/11/2019	36.2	52.2	29.00
22/11/2019	281	198	32.07
28/11/2019	131	91.3	33.13
4/12/2019	65.6	45.1	33.34
10/12/2019	88.1	62.4	33.84
16/12/2019	157	111	35.15
22/12/2019	259	183	37.61
28/12/2019	51.1	35.8	37.58
3/01/2020	108	76.8	76.80
9/01/2020	114	80.5	76.80
15/01/2020	54.1	38.1	38.88
21/01/2020	68.8	48.3	39.02
27/01/2020	16.7	11.7	38.61

**Groundwater Monitoring**

Groundwater monitoring is undertaken from a range of monitoring piezometers and water bores both within and surrounding the mine site. Standing Water Level (SWL) checks are undertaken on a quarterly basis, with full water quality sampling undertaken on a 6 monthly basis. Standing water levels have stabilized over the last quarter except for P3 a piezometer close to the eastern pit edge.



## Surface Water

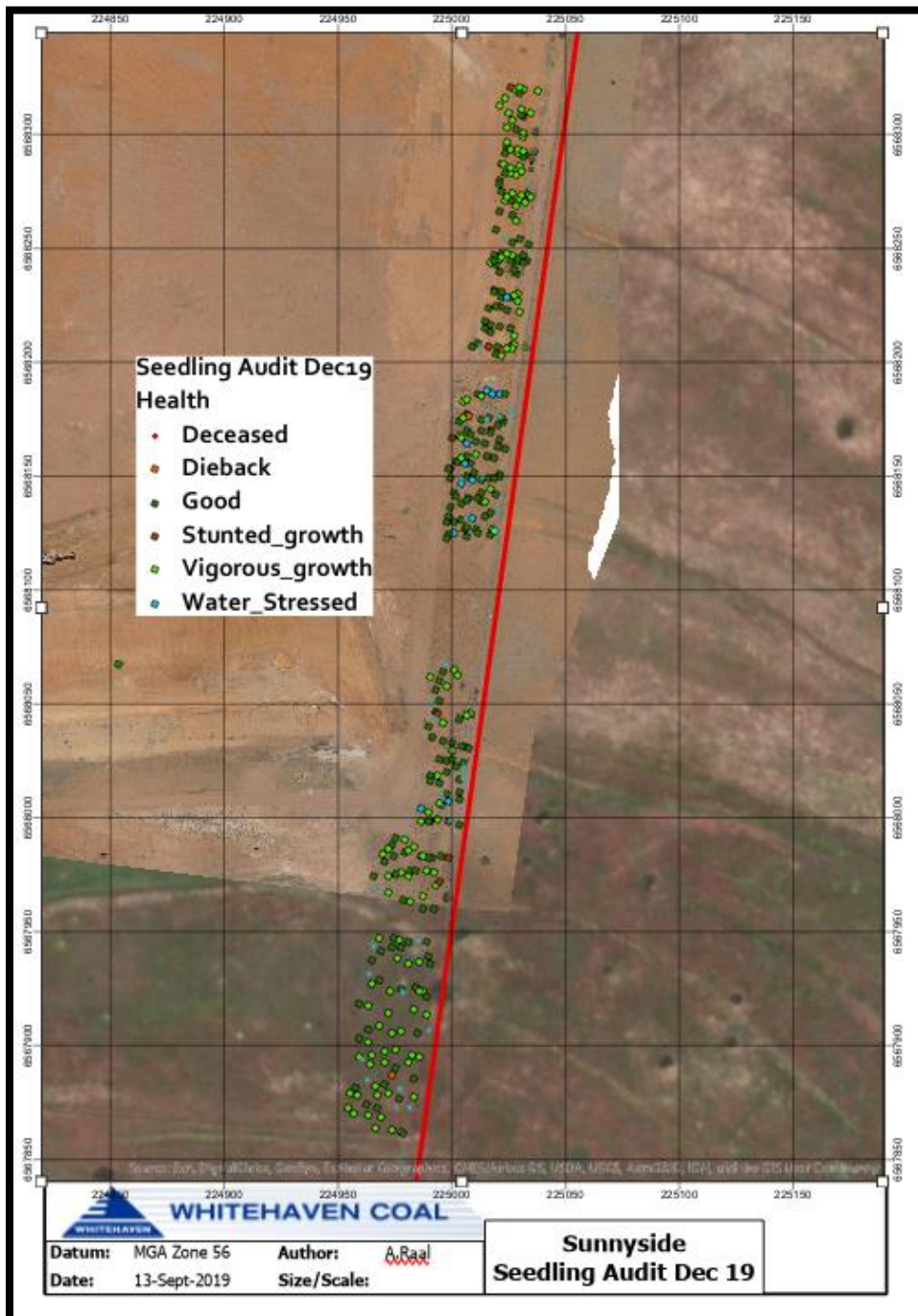
Surface water sampling of storages onsite continues to be carried out on a quarterly basis. Dam levels have dropped over the last 3 months, however recent rains have provided some water in these dams.

## Complaints

No complaints have been received for the Sunnyside Coal Mine since the previous CCC meeting.

## Rehabilitation

A total of 36.75ha was reshaped to final landform. Rehabilitation is scheduled to be completed by November 2020. Tube stock planted in the Koala corridors has had ongoing watering and are doing very well with +92% survival rate.



**Minutes of the 33<sup>rd</sup> Meeting of the  
Sunnyside Coal Mine Community Consultative Committee**

**Meeting Held: 18<sup>th</sup> November 2020**

**Venue:** The meeting was held at Namoi Valley Brickworks with site visit to mine site 15:00

**1. Present and Apologies**

**Present:** Michael Broekman (MB) (Chairperson)  
Andrew Raal (AR) (Environmental Officer- Whitehaven), Mr Wade Hudson Senior Development Officer (WH) (Gunnedah Shire Council); Liz Ferguson (LF) (Community Representative)

**Apologies:** Colleen Fuller Colleen Fuller (CF) (Gunnedah Shire Council Rep), Ron Fuller (RF) Community Representative, Daryl Robinson (Whitehaven Coal)z

**2. Previous Minutes**

Minutes of the previous meeting were adopted as a true record on the motion and confirmed by MB and AR.

**3. Business Arising**

Committee happy with mine progress towards rehabilitation and vegetation growth. LF has concerns with remaining highwall stability. AR notes that a highwall drain will be installed and no run on water will be running over the highwall edge from the south, also the high wall is rock and weathered rock which is more stable than soil. MB noted the reaming High Wall reduces the aesthetic of the area and should look at planting vegetation on the high wall.

Discussion was held on site drainage and where water flows into the Coccoofoonah creek

**4. Environmental Report**

AR presented environmental monitoring results and records of complaints, which are include in the Environmental Monitoring Report.

Groundwater levels improved due to the Feb-March 2020 rainfall. February 2020 had high dust levels due to regional dust storms and drought conditions. Attended noise monitoring has been suspended due to lack of activity on the mine site.

**5. General Business**

AR recommended a follow up site visit in 12 months to view highwall stability. Bulk earthworks and rehabilitation will be completed by Mid-December 2020. Only remaining works will be planting, installation of highwall drain and demobilisation of equipment.

Coccoofoonah original dirt road is to be reinstated, and the existing bitumen road removed as it is on private property.

**6. Next meeting**

Next meeting scheduled for Wednesday 19th May 2021 at 3:30pm, at Namoi Valley Brickworks.

Meeting closed at 16:07

# Sunnyside Coal Mine Community Consultative Committee Meeting #33

## Environmental Monitoring Report February – October 2020

### Noise Monitoring

Attended noise monitoring was conducted on the 9<sup>th</sup>/10<sup>th</sup> March 2020, and on 23/24/25/ June 2020. Sunnyside Coal Mine complied with the project specific noise criteria across all measurement locations and periods for the first 2 Quarters of 2020. Correspondence from the EPA stated they no longer require scheduled attended noise monitoring. Monitoring will only be on an as needs bases. Site noise management plan was updated and approved by the Department of Planning.

### Blasting

There has been no blasting during the reporting period, all site blasting has ceased.

### Air Quality Monitoring

#### **Deposited Dust**

The annual averages for deposited dusts at all monitoring locations remain below the criteria of 4g/m<sup>2</sup>/month average over 12 month period ending December 2019. There were elevated dust levels at Plain View each month of the last quarter and December showed elevated levels at Ferndale, Plain View, Lilydale, Ivanhoe and Illili dust gauges. Table 1 below shows the monthly depositional dust readings at each gauge over the last quarter.

Table 1: Quarterly depositional dust gauge readings

Month	SD1	SD3	SD4	SD5	SD6	SD7	SD8
	Ferndale	Plain View	Lilydale	Ivanhoe	Illili	Innisvalle	Woodlawn
	(EPL 1)	(EPL 2)		(EPL 4)	(EPL 5)	(EPL 6)	
Feb-20	6.2	9	2.6	6	5.6	1.1	3.7
Mar-20	1.6	1.4	0.9	1.3	1.9	1.4	0.7
Apr-20	1.4	2.2	0.9	2.5	1.1	0.8	0.7
May-20	2.4	0.9	0.8	0.8	1.7	0.3	0.5
Jun-20	0.6	2.7	0.2	0.3	0.4	0.4	0.3
Jul-20	0.3	2.1	0.3	0.3	0.4	0.5	0.4

Aug-20	0.9	1.2	0.4	0.3	0.4	0.5	0.3
Sep-20	0.4	0.9	0.6	1	5.2	0.5	0.3
Oct-20	0.6	0.9	0.5	1.2	0.9	0.4	2

#### Dust PM<sub>10</sub> Data

PM<sub>10</sub> dust levels are taken every 6 days at Sunnyside. Table 2 below details each reading over the last quarter. Single exceedance was on 2<sup>nd</sup> February 2020, regional dust storms.

Table 2: Quarterly Illili PM<sub>10</sub> High Volume Air Sampler

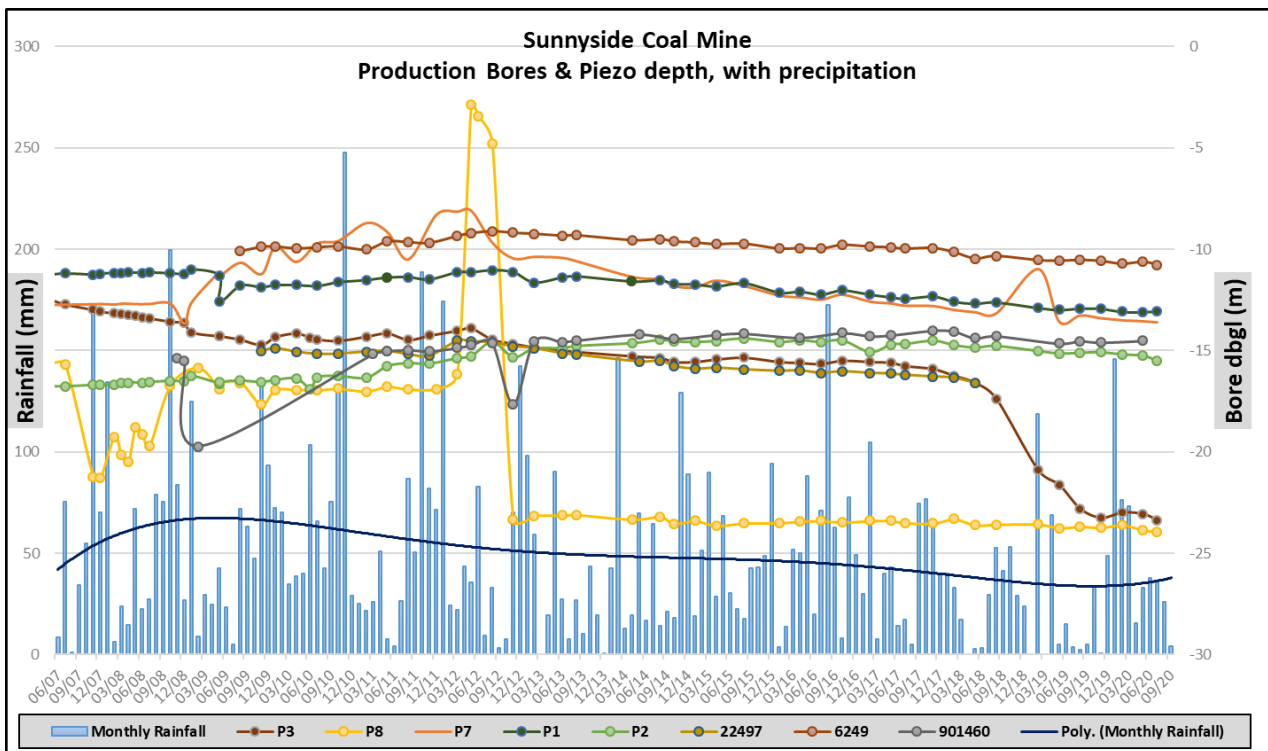
Date	mg/paper	µg/m <sup>3</sup>
2-Feb-20	70.30	50.40
8-Feb-20	2.40	1.60
14-Feb-20	9.20	6.40
20-Feb-20	34.90	24.10
26-Feb-20	17.60	12.20
3-Mar-20	33.70	23.20
9-Mar-20	6.80	4.60
15-Mar-20	10.40	7.00
21-Mar-20	34.30	24.00
27-Mar-20	12.00	8.10
2-Apr-20	10.60	7.20
8-Apr-20	8.20	5.50
14-Apr-20	13.00	8.70
20-Apr-20	11.60	7.70
26-Apr-20	21.70	14.60
2-May-20	0.10	0.10
8-May-20	11.20	7.40
14-May-20	4.80	3.10
20-May-20	10.00	6.70
26-May-20	2.70	1.80
1-Jun-20	9.70	6.50
7-Jun-20	9.60	6.20
13-Jun-20	4.00	6.00
19-Jun-20	2.90	4.40
25-Jun-20	1.10	0.70
1-Jul-20	7.50	4.90
7-Jul-20	6.90	4.50
13-Jul-20	<0.1	<0.1
19-Jul-20	2.90	1.90
25-Jul-20	<0.1	<0.1
31-Jul-20	8.30	5.40

Date	mg/paper	µg/m <sup>3</sup>
6-Aug-20	6.60	4.30
12-Aug-20	6.10	4.10
18-Aug-20	2.90	1.90
24-Aug-20	2.40	1.50
30-Aug-20	13.80	8.50
5-Sep-20	10.10	6.30
11-Sep-20	4.30	2.60
17-Sep-20	25.30	15.60
23-Sep-20	17.40	10.70
29-Sep-20	18.50	11.40
5-Oct-20	20.10	12.60
11-Oct-20	16.10	10.00
17-Oct-20	52.30	33.40
23-Oct-20	15.60	9.90
29-Oct-20	10.80	6.80

### Groundwater Monitoring

Groundwater monitoring is undertaken from a range of monitoring piezometers and water bores both within and surrounding the mine site. Standing Water Level (SWL) checks are undertaken on a quarterly basis, with full water quality sampling undertaken on a 6 monthly basis. Standing water levels increased after the Feb-April 2020 rainfall. Mean drop of 0.155m since April 2020.

The Verona Bore was removed April 2020 for refurbishment, and has since been decommissioned, and generator removed.





### **Surface Water**

Surface water sampling of storages onsite continues to be carried out on a quarterly basis. Water stored on site is approximately 1ML

### **Complaints**

No complaints have been received for the Sunnyside Coal Mine since the previous CCC meeting.

### **Rehabilitation**

Rehabilitation undertaken since last meeting

#### **General Rehab:**

- Removal of all infrastructure (buildings, weigh bridge, ROM pad, UG cables etc..)
- Removal bitumen road from internal mine gate to ROM pad.
- Final landform and spreading of topsoil

#### **Planting:**

- Aug 2020: 850trees on overburden dump infill planting, corejute mesh and tree guard
- 28/8/2020: 1,402 trees, koala corridors east and west area ripped, planted with matting and tree guards.
- October 2019: 13ha cover crop in void (oats/millet)