

# Schedule of Adopted Environmental Monitoring



**APPENDIX H**



Table 1 - Environmental Monitoring Program

		Conditional Requirement <sup>1</sup>	Monitoring Locations <sup>2</sup>	By	Jan	Feb	Mar	Apr	May	Jun	Jul	Aug	Sep	Oct	Nov	Dec
NOISE	Operational Noise Attended	3(10)	N1 & N2	Spectrum Acoustic			*			*			*			*
	Operational Noise Unattended	3(10)	N1 & N2	Spectrum Acoustic			*			*			*			*
	Equipment Noise	-		Spectrum Acoustic	SPL of mobile equipment monitored upon request by Mine Manager											
BLASTING	Ground Vibration	3(22)	BB-1 to BB-3	Orica	Blast Monitoring will be undertaken at sites BB-1 and BB-3 for all blasts and as required at BB-2.											
	Air Overpressure	3(22)														
AIR QUALITY	Dust	3(24)	BD-2 to BD-8	WCMLP	*	*	*	*	*	*	*	*	*	*	*	*
	PM10	3(24)	BA-1 & BA-2	WCMLP	Once every 6 days in accordance with DECC state schedule for PM10 monitoring											

<sup>1</sup> Project Approval PA 06\_0198 issued by the Minister for Planning, 15<sup>th</sup> April 2008.

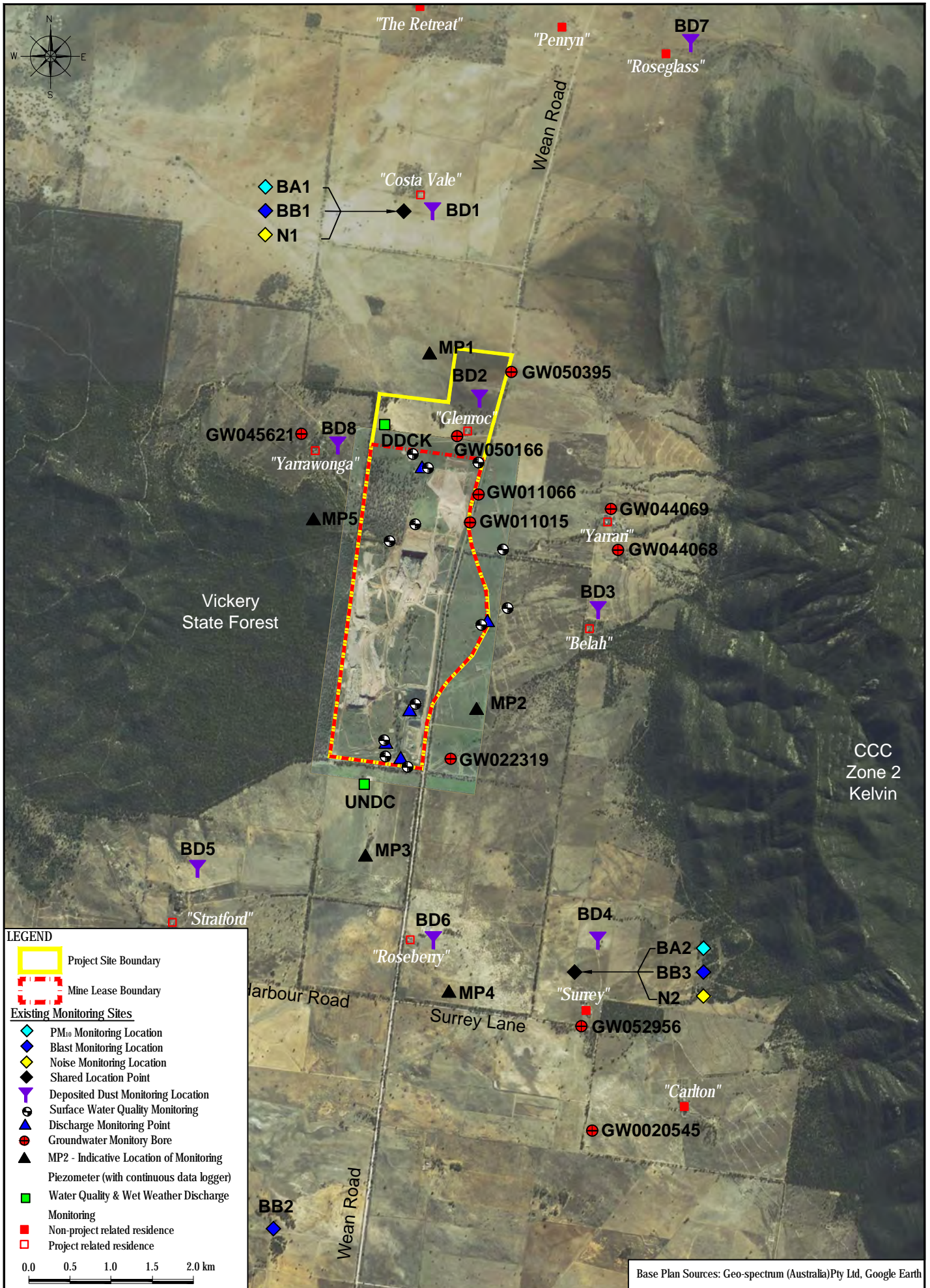
<sup>2</sup> See Figures 2 and 3.

		Conditional Requirement <sup>1</sup>	Monitoring Locations <sup>2</sup>	By	Jan	Feb	Mar	Apr	May	Jun	Jul	Aug	Sep	Oct	Nov	Dec
EROSION AND SEDIMENT CONTROL		3(4)	All water management and erosion and sediment control structures <sup>3</sup>	WC MPL	*	*	*	*	*	*	*	*	*	*	*	*
GROUND WATER	Water Quality (Full analysis)	3(6)	MP1-5, WB1-13	WC MPL					*						*	
	SWL, EC, pH	3(6)				*		*		*		*		*		*
SURFACE WATER	Wet Weather Discharge (TSS, TOC, Grease & Oil, pH, EC)	3(5)	SD3 & Northern Boundary Site Exit	WC MPL	As soon as practicable after overflow commences and not more than 12 hours after the commencement of overflow											
	Water Quality (TSS, TOC, Grease & Oil, pH, EC) Off Site	3(5)	DDCK, UNDC, SD7	WC MPL	Quarterly at a time when there is flow and as soon as practicable after overflow commences and not more than 12 hours after the commencement of overflow.											
	Water Quality (TSS, Grease & Oil, pH, EC) On Site	3(5)	All project site storage dams and mining void sump(s)	WC MPL			*			*			*			*
	Water Quality (Representative metals and ions) On Site	3(5)	All project site storage dams and mining void sump(s)	WC MPL												*

<sup>3</sup> Monthly inspection or following rainfall of >25mm/24 hours

		Conditional Requirement <sup>1</sup>	Monitoring Locations <sup>2</sup>	By	Jan	Feb	Mar	Apr	May	Jun	Jul	Aug	Sep	Oct	Nov	Dec
WEATHER		3(25)	W1	WC MPL	Frequency – continuous Average period – 1 hourly for rainfall, 15 minutes for remaining parameters											
FLORA AND FAUNA	Flora and Fauna	3(30)	TBA	TBA	TBA											
CULTURAL HERITAGE	Ground Disturbance Activities		Mine site Soil Strip Areas	Gunida Gonyah AC, Min Min AC	Representatives invited to monitor all ground disturbing activities											
GREENHOUSE GAS EMISSIONS and ENERGY EFFICIENCY		3(47)	Mine site	WC MPL	Monthly internal reports on fuel and energy consumption, and actions initiated to reduce emissions and increase energy efficiency to be reported in AEMR and Greenhouse and Energy Efficiency Plan											
WASTE MANAGEMENT	Waste Minimisation	3(48)	Mine site	NCPL	Quarterly internal reports on volumes of each waste stream and actions initiated to reduce waste volume and improve recycling practice to be reported in AEMR.											





To be printed A4