

## Rocglen Coal Mine- Monthly Monitoring Summary

### Site Information

**EPL No:** 12870

**EPA Website Link:** <http://epa.nsw.gov.au/prpoeoapp/ViewPOEOLicence.aspx?DOCID=40278&SYSUID=1&LICID=12870>

**Licensee:** Whitehaven Coal Mining Pty Ltd

**Licensee Address:** Rocglen Coal Mine, Wean Road, GUNNEDAH NSW 2380

**EPL Monitoring Points:** See Figure 1 below

**Sampling Period:** August 2019

**Obtained Date:** 17 September 2019

**Publication Date:** 19 September 2019

**Table 1 - No Pollutant Limits Apply**

EPL ID	Pollutant	Units of Measure	Monitoring Frequency	No. of Samples for the Month	Date(s) Sampled	Date(s) Obtained	Min Value	Mean Value	Median Value	Max or Only Value
4	Particulates-Deposited Matter	g/m <sup>2</sup> /month	Continuous	1	15/08/19	16/09/19	-	-	-	2.2
6	Particulates-Deposited Matter	g/m <sup>2</sup> /month	Continuous	1	15/08/19	16/09/19	-	-	-	1.4
10	PM <sub>10</sub>	µg/m <sup>3</sup>	Every 6 days	5	Various	13/09/19	4	20.8	25.3	37.2
11	Conductivity	µS/cm	Special Frequency 1*	-	-	-	-	-	-	-
	Total organic carbon	mg/L					-	-	-	-
12	Conductivity	µS/cm	Special Frequency 1*	-	-	-	-	-	-	-
	Total organic carbon	mg/L					-	-	-	-
13	TSS	mg/L	Special Frequency 2**	-	-	-	-	-	-	-
	Conductivity	µS/cm					-	-	-	-
	Oil & Grease	mg/L					-	-	-	-
	pH	pH					-	-	-	-



# WHITEHAVEN COAL

## Rocgen Coal Mine- Monthly Monitoring Summary

EPL ID	Pollutant	Units of Measure	Monitoring Frequency	No. of Samples for the Month	Date(s) Sampled	Date(s) Obtained	Min Value	Mean Value	Median Value	Max or Only Value
	Total organic carbon	mg/L					-	-	-	-
14	TSS	mg/L	Special Frequency 2**	-	-	-	-	-	-	-
	Conductivity	µS/cm					-	-	-	-
	Oil & Grease	mg/L					-	-	-	-
	pH	pH					-	-	-	-
	Total organic carbon	mg/L					-	-	-	-
15	TSS	mg/L	Special Frequency 2**	-	-	-	-	-	-	-
	Conductivity	µS /cm					-	-	-	-
	Oil & Grease	mg/L					-	-	-	-
	pH	pH					-	-	-	-
	Total organic carbon	mg/L					-	-	-	-

<sup>1</sup>result caused by a regional dust event, not mine related.

**Table 2 - Pollutant Limits Apply**

EPL ID	Pollutant	Units of Measure	Monitoring Frequency	No. of Samples for the Month	Date(s) Sampled	Date(s) Obtained	Min Value	Max or Only Value	100%ile Limit	Exceedance (Yes/No)	Comments
11	TSS	mg/L	Special Frequency 1*	-	-	-	-	-	50	-	
	Oil & Grease	mg/L					-	-	10	-	
	pH	pH					-	-	6.5-8.5	-	
12	TSS	mg/L	Special Frequency 1*	-	-	-	-	-	50	-	
	Oil & Grease	mg/L					-	-	10	-	
	pH	pH					-	-	6.5-8.5	-	



## Rocgen Coal Mine- Monthly Monitoring Summary

\* Special Frequency 1 means the collection of samples as soon as practicable after each discharge commences and in any case not more than 12 hours after each discharge commences.

\*\* Special Frequency 2 means collection of samples quarterly (in the event of flow during the quarter) at a time when there is flow and as soon as practicable after each wet weather discharge from points 11 and 12 commences and in any case not more than 12 hours after each discharge commences.

**Table 3 – Monitoring (Quarterly & Yearly – No Limits apply)**

EPL ID	Pollutant	Units of Measure	Monitoring Frequency	No. of Samples for the Month	Date Sampled	Date Obtained	Min Value	Mean Value	Median Value	Max Value/Only Value
16	Aluminium	mg/L	Yearly	-	-	-	-	-	-	
	Arsenic	mg/L					-	-	-	
	Bicarbonate	mg/L					-	-	-	
	Chloride	mg/L					-	-	-	
	Iron	mg/L					-	-	-	
	Manganese	mg/L					-	-	-	
	Sodium	mg/L					-	-	-	
16	Conductivity	µS/cm	Quarterly	1	20/08/2019	28/08/2019	-	-	-	1540
	Oil & Grease	mg/L					-	-	-	<5
	pH	pH					-	-	-	8.61
	TOC	mg/L					-	-	-	4
	TSS	mg/L					-	-	-	7



# WHITEHAVEN COAL

## Rocgen Coal Mine- Monthly Monitoring Summary

**Table 4 – Monitoring (Noise – Limits Apply)**

EPL ID	Date	Start Time	Period (mins)	Rocgen Measured Levels – dB(A) Leq 15min Day	Rocgen Measured Levels – dB(A) Leq 15min Evening	Rocgen Measured Levels – dB(A) Leq 15min Night	Rocgen Measured Levels – dB(A) LA 1min Night	Limits	Wind speed (m/s)	Compliant (Y/N)	Comments		
N1								35 dB(A) Leq (15 min) Day, Evening, Night  45dB(A) LA (1 min) Night			Noise results not available at time of publication, will be included in the June report.		
	N2									35 dB(A) Leq (15 min) Day, Evening, Night  45dB(A) LA (1 min) Night			



# WHITEHAVEN COAL

## Roclen Coal Mine- Monthly Monitoring Summary

EPL ID	Date	Start Time	Period (mins)	Roclen Measured Levels – dB(A) Leq 15min Day	Roclen Measured Levels – dB(A) Leq 15min Evening	Roclen Measured Levels – dB(A) Leq 15min Night	Roclen Measured Levels – dB(A) LA 1min Night	Limits	Wind speed (m/s)	Compliant (Y/N)	Comments
								35 dB(A) Leq (15 min) Day, Evening, Night			
								45dB(A) L <sub>A</sub> (1 min) Night			

Note: Measured noise levels are not necessarily the result of activity at Roclen Coal Mine

## Rocgen Coal Mine- Monthly Monitoring Summary

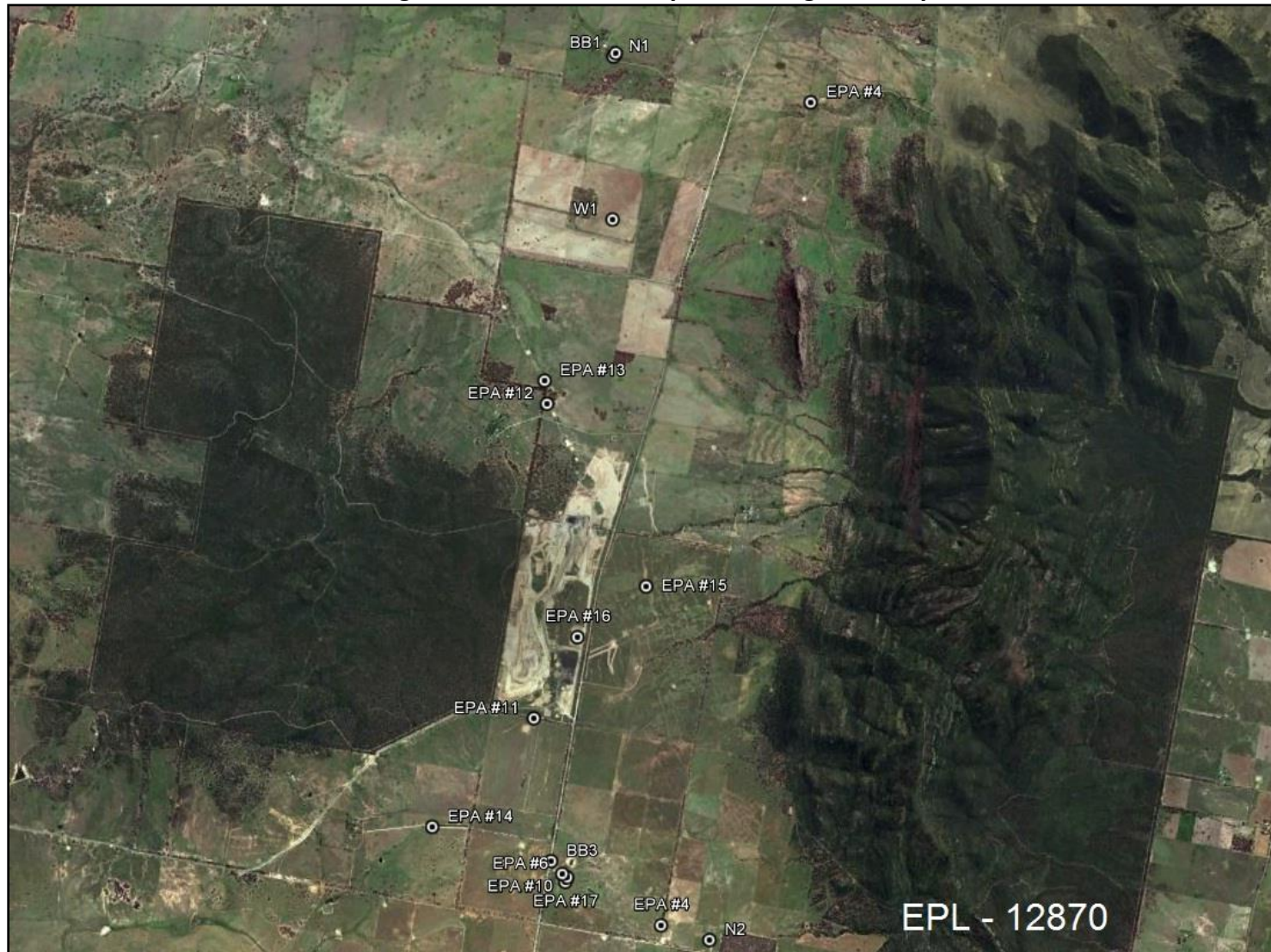


Figure 1 – EPL 12870 Monitoring Locations