



## Rocglen Coal Mine- Monthly Monitoring Summary

### Site Information

**EPL No:** 12870

**EPA Website Link:** <http://epa.nsw.gov.au/prpoeoapp/ViewPOEOLicence.aspx?DOCID=40278&SYSUID=1&LICID=12870>

**Licensee:** Whitehaven Coal Mining Pty Ltd

**Licensee Address:** Rocglen Coal Mine, Wean Road, GUNNEDAH NSW 2380

**EPL Monitoring Points:** See Figure 1 below

**Sampling Period:** October 2018

**Obtained Date:** 6 November 2018

**Publication Date:** 9 November 2018

**Table 1 - No Pollutant Limits Apply**

EPL ID	Pollutant	Units of Measure	Monitoring Frequency	No. of Samples for the Month	Date(s) Sampled	Date(s) Obtained	Min Value	Mean Value	Median Value	Max or Only Value
4	Particulates-Deposited Matter	g/m <sup>2</sup> /month	Continuous	1	17/10/18	24/10/18	-	-	-	2.8
6	Particulates-Deposited Matter	g/m <sup>2</sup> /month	Continuous	1	17/10/18	24/10/18	-	-	-	1.5
10	PM <sub>10</sub>	µg/m <sup>3</sup>	Every 6 days	5	Various	6/11/18	5.8	14.1	15.2	22.9
11	Conductivity	µS/cm	Special Frequency 1*	-	-	-	-	-	-	-
	Total organic carbon	mg/L					-	-	-	-
12	Conductivity	µS/cm	Special Frequency 1*	-	-	-	-	-	-	-
	Total organic carbon	mg/L					-	-	-	-
13	TSS	mg/L	Special Frequency 2**	-	-	-	-	-	-	-
	Conductivity	µS/cm					-	-	-	-
	Oil & Grease	mg/L					-	-	-	-
	pH	pH					-	-	-	-
	Total organic carbon	mg/L					-	-	-	-
14	TSS	mg/L		-	-	-	-	-	-	-
	Conductivity	µS/cm					-	-	-	-



# WHITEHAVEN COAL

## Rocgen Coal Mine- Monthly Monitoring Summary

EPL ID	Pollutant	Units of Measure	Monitoring Frequency	No. of Samples for the Month	Date(s) Sampled	Date(s) Obtained	Min Value	Mean Value	Median Value	Max or Only Value
	Oil & Grease	mg/L	Special Frequency 2**				-	-	-	-
	pH	pH					-	-	-	-
	Total organic carbon	mg/L					-	-	-	-
15	TSS	mg/L	Special Frequency 2**	-	-	-	-	-	-	-
	Conductivity	µS/cm					-	-	-	-
	Oil & Grease	mg/L					-	-	-	-
	pH	pH					-	-	-	-
	Total organic carbon	mg/L					-	-	-	-

Table 2 - Pollutant Limits Apply

EPL ID	Pollutant	Units of Measure	Monitoring Frequency	No. of Samples for the Month	Date(s) Sampled	Date(s) Obtained	Min Value	Max or Only Value	100%ile Limit	Exceedance (Yes/No)	Comments
11	TSS	mg/L	Special Frequency 1*	-	-	-	-	-	50	-	-
	Oil & Grease	mg/L					-	-	10	-	
	pH	pH					-	-	6.5-8.5	-	
12	TSS	mg/L	Special Frequency 1*	-	-	-	-	-	50	-	-
	Oil & Grease	mg/L					-	-	10	-	
	pH	pH					-	-	6.5-8.5	-	

\* Special Frequency 1 means the collection of samples as soon as practicable after each discharge commences and in any case not more than 12 hours after each discharge commences.

\*\* Special Frequency 2 means collection of samples quarterly (in the event of flow during the quarter) at a time when there is flow and as soon as practicable after each wet weather discharge from points 11 and 12 commences and in any case not more than 12 hours after each discharge commences.



# WHITEHAVEN COAL

**Rocgen Coal Mine- Monthly Monitoring Summary**  
**Table 3 – Monitoring (Quarterly & Yearly – No Limits apply)**

EPL ID	Pollutant	Units of Measure	Monitoring Frequency	No. of Samples for the Month	Date Sampled	Date Obtained	Min Value	Mean Value	Median Value	Max Value/Only Value
16	Aluminium	mg/L	Yearly	-	-	-	-	-	-	-
	Arsenic	mg/L					-	-	-	-
	Bicarbonate	mg/L					-	-	-	-
	Chloride	mg/L					-	-	-	-
	Iron	mg/L					-	-	-	-
	Manganese	mg/L					-	-	-	-
	Sodium	mg/L					-	-	-	-
16	Conductivity	µS/cm	Quarterly	-	-	-	-	-	-	-
	Oil & Grease	mg/L					-	-	-	-
	pH	pH					-	-	-	-
	TOC	mg/L					-	-	-	-
	TSS	mg/L					-	-	-	-



**Rocglen Coal Mine- Monthly Monitoring Summary**  
**Table 4 – Monitoring (Noise – Limits Apply)**

EPL ID	Date	Start Time	Period (mins)	Rocglen Measured Levels – dB(A) <small>Leq 15min Day</small>	Rocglen Measured Levels – dB(A) <small>Leq 15min Evening</small>	Rocglen Measured Levels – dB(A) <small>Leq 15min Night</small>	Rocglen Measured Levels – dB(A) <small>LA 1min Night</small>	Limits	Wind speed (m/s)	Compliant (Y/N)	Comments
N1	-	-	90	-				35 dB(A) Leq (15 min) Day, Evening, Night  45dB(A) LA (1 min) Night	-	-	
		-	30		-				-	-	
		-	60			-			-	-	
		-	60				-		-	-	
	-	90	-						-	-	
	-	30		-					-	-	
	-	60			-				-	-	
	-	60				-			-	-	
	-	90	-						-	-	
	-	30		-					-	-	
	-	60			-				-	-	
	-	60				-			-	-	
N2	-	-	90	-				35 dB(A) Leq (15 min) Day, Evening, Night  45dB(A) LA (1 min) Night	-	-	
		-	30		-				-	-	
		-	60			-			-	-	
		-	60				-		-	-	
	-	90	-						-	-	
	-	30		-					-	-	
	-	60			-				-	-	
	-	60				-			-	-	
	-	90	-						-	-	
	-	30		-					-	-	
	-	60			-				-	-	
	-	60				-			-	-	

Note: Measured noise levels are not necessarily the result of activity at Rocglen Coal Mine



# WHITEHAVEN COAL

**Rocglen Coal Mine- Monthly Monitoring Summary**  
**Table 5 – Monitoring (Blasts – Limits Apply)**

EPL ID	Parameter	Units of Measure	Frequency	No. of Blasts for the Month	Average Value	Max or Only Value	100%ile Limit	(Potential) Non-compliance /breach
BB1	Blast Noise	dB (Lin Peak)	Every Blast	1	-	107.3	120	No
	Blast Vibration	mm/s	Every Blast		-	0.28	10	No
BB3	Blast Noise	dB (Lin Peak)	Every Blast	1	-	89.9	120	No
	Blast Vibration	mm/s	Every Blast		-	0.40	10	No



# WHITEHAVEN COAL

## Rocgen Coal Mine- Monthly Monitoring Summary

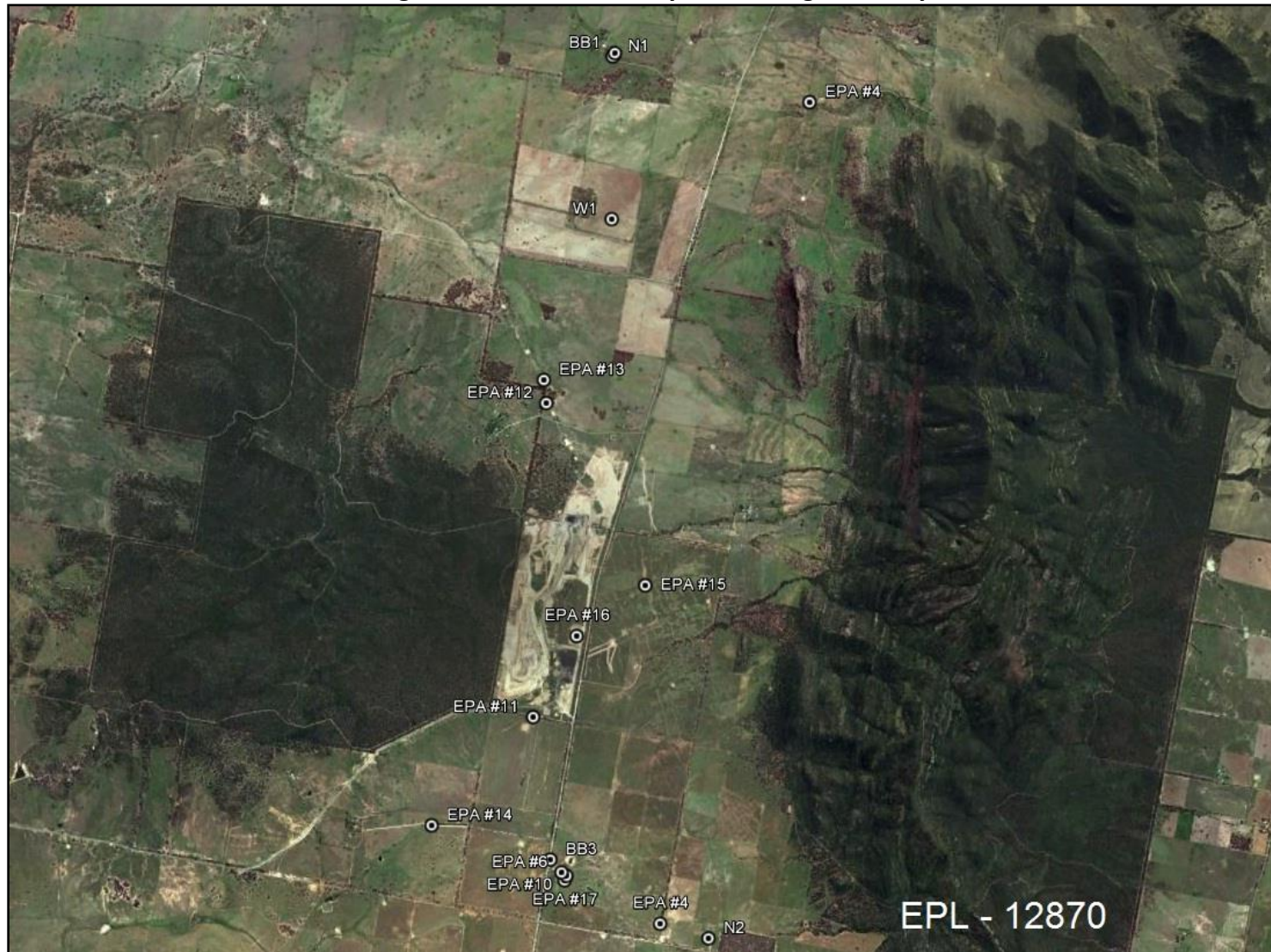


Figure 1 – EPL 12870 Monitoring Locations