



Rocglen Coal Mine- Monthly Monitoring Summary

Site Information

EPL No: 12870

EPA Website Link: <http://epa.nsw.gov.au/prpoeoapp/ViewPOEOLicence.aspx?DOCID=40278&SYSUID=1&LICID=12870>

Licensee: Whitehaven Coal Mining Pty Ltd

Licensee Address: Rocglen Coal Mine, Wean Road, GUNNEDAH NSW 2380

EPL Monitoring Points: See Figure 1 below

Sampling Period: January 2022

Obtained Date: 15th February 2022

Publication Date: 17th February 2022

Table 1 - No Pollutant Limits Apply

EPL ID	Pollutant	Units of Measure	Monitoring Frequency	No. of Samples for the Month	Date(s) Sampled	Date(s) Obtained	Min Value	Mean Value	Median Value	Max or Only Value
4	Particulates-Deposited Matter (BD4)	g/m ² /month	Continuous	1	13/01/2022	2/02/2022	-	-	-	1.13
6	Particulates-Deposited Matter (BD6)	g/m ² /month	Continuous	1	13/12/2021	2/02/2022	-	-	-	3.08
10	PM ₁₀	µg/m ³	Every 6 days	5	Various	15/02/2022	5.9	8.6	7.2	13.6
11	Conductivity	µS/cm	Special Frequency 1*	0	-	-	-	-	-	-
	Total organic carbon	mg/L					-	-	-	-
12	Conductivity	µS/cm	Special Frequency 1*	0	-	-	-	-	-	-
	Total organic carbon	mg/L					-	-	-	-
13	TSS	mg/L	Special Frequency 2**(DDCK)	0	-	-	-	-	-	-
	Conductivity	µS/cm					-	-	-	-
	Oil & Grease	mg/L					-	-	-	-
	pH	pH					-	-	-	-
	Total organic carbon	mg/L					-	-	-	-
14	TSS	mg/L		0	-	-	-	-	-	-
	Conductivity	µS/cm					-	-	-	-



WHITEHAVEN COAL

Rocgen Coal Mine- Monthly Monitoring Summary

EPL ID	Pollutant	Units of Measure	Monitoring Frequency	No. of Samples for the Month	Date(s) Sampled	Date(s) Obtained	Min Value	Mean Value	Median Value	Max or Only Value
	Oil & Grease	mg/L	Special Frequency 2**(UNDC)				-	-	-	-
	pH	pH					-	-	-	-
	Total organic carbon	mg/L					-	-	-	-
15	TSS	mg/L	Special Frequency 2** (SD7)	0	-	-	-	-	-	-
	Conductivity	µS /cm					-	-	-	-
	Oil & Grease	mg/L					-	-	-	-
	pH	pH					-	-	-	-
	Total organic carbon	mg/L					-	-	-	-

Table 2 - Pollutant Limits Apply

EPL ID	Pollutant	Units of Measure	Monitoring Frequency	No. of Samples for the Month	Date(s) Sampled	Date(s) Obtained	Min Value	Max or Only Value	100%ile Limit	Exceedance (Yes/No)	Comments
11	TSS	mg/L	Special Frequency 1*	0	-	-	-	-	-	No	-
	Oil & Grease	mg/L					-	-	-	No	
	pH	pH					-	-	-	No	
12	TSS	mg/L	Special Frequency 1*	0	-	-	-	-	-	No	-
	Oil & Grease	mg/L					-	-	-	No	
	pH	pH					-	-	-	No	

* Special Frequency 1 means the collection of samples as soon as practicable after each discharge commences and in any case not more than 12 hours after each discharge commences.

** Special Frequency 2 means collection of samples quarterly (in the event of flow during the quarter) at a time when there is flow and as soon as practicable after each wet weather discharge from points 11 and 12 commences and in any case not more than 12 hours after each discharge commences.



WHITEHAVEN COAL

Rocgen Coal Mine- Monthly Monitoring Summary
Table 3 – Monitoring (Quarterly & Yearly – No Limits apply)

EPL ID	Pollutant	Units of Measure	Monitoring Frequency	No. of Samples for the Month	Date Sampled	Date Obtained	Min Value	Mean Value	Median Value	Max Value/Only Value
16	Aluminium	mg/L	Yearly	0	-	-	-	-	-	-
	Arsenic	mg/L					-	-	-	-
	Bicarbonate	mg/L					-	-	-	-
	Chloride	mg/L					-	-	-	-
	Iron	mg/L					-	-	-	-
	Manganese	mg/L					-	-	-	-
	Sodium	mg/L					-	-	-	-
16	Conductivity	µS/cm	Quarterly	0	-	-	-	-	-	-
	Oil & Grease	mg/L					-	-	-	-
	pH	pH					-	-	-	-
	TOC	mg/L					-	-	-	-
	TSS	mg/L					-	-	-	-



WHITEHAVEN COAL

Rocglen Coal Mine- Monthly Monitoring Summary
Figure 1 – EPL 12870 Monitoring Locations





Rocglen Coal Mine- Monthly Monitoring Summary

Site Information

EPL No: 12870

EPA Website Link: <http://epa.nsw.gov.au/prpoeoapp/ViewPOEOLicence.aspx?DOCID=40278&SYSUID=1&LICID=12870>

Licensee: Whitehaven Coal Mining Pty Ltd

Licensee Address: Rocglen Coal Mine, Wean Road, GUNNEDAH NSW 2380

EPL Monitoring Points: See Figure 1 below

Sampling Period: February 2022

Obtained Date: 17th March 2022

Publication Date: 21st March 2022

Table 1 - No Pollutant Limits Apply

EPL ID	Pollutant	Units of Measure	Monitoring Frequency	No. of Samples for the Month	Date(s) Sampled	Date(s) Obtained	Min Value	Mean Value	Median Value	Max or Only Value
4	Particulates-Deposited Matter (BD4)	g/m ² /month	Continuous	1	14/02/2022	22/02/2022	-	-	-	1.93
6	Particulates-Deposited Matter (BD6)	g/m ² /month	Continuous	1	14/02/2022	22/02/2022	-	-	-	1.51
10	PM ₁₀	µg/m ³	Every 6 days	5	Various	17/03/2022	3	4.8	4.8	7.9
11	Conductivity	µS/cm	Special Frequency 1*	1	22/02/2022	2/03/2022	-	-	-	603
	Total organic carbon	mg/L					-	-	-	8
12	Conductivity	µS/cm	Special Frequency 1*	0	-	-	-	-	-	-
	Total organic carbon	mg/L					-	-	-	-
13	TSS	mg/L	Special Frequency 2**(DDCK)	0	-	-	-	-	-	-
	Conductivity	µS/cm					-	-	-	-
	Oil & Grease	mg/L					-	-	-	-
	pH	pH					-	-	-	-
	Total organic carbon	mg/L					-	-	-	-
	TSS	mg/L			-	-	-	-	-	



WHITEHAVEN COAL

Rocgen Coal Mine- Monthly Monitoring Summary

EPL ID	Pollutant	Units of Measure	Monitoring Frequency	No. of Samples for the Month	Date(s) Sampled	Date(s) Obtained	Min Value	Mean Value	Median Value	Max or Only Value
14	Conductivity	µS/cm	Special Frequency 2**(UNDC)	0			-	-	-	-
	Oil & Grease	mg/L					-	-	-	-
	pH	pH					-	-	-	-
	Total organic carbon	mg/L					-	-	-	-
15	TSS	mg/L	Special Frequency 2**(SD7)	0	-	-	-	-	-	-
	Conductivity	µS/cm					-	-	-	-
	Oil & Grease	mg/L					-	-	-	-
	pH	pH					-	-	-	-
	Total organic carbon	mg/L					-	-	-	-

Table 2 - Pollutant Limits Apply

EPL ID	Pollutant	Units of Measure	Monitoring Frequency	No. of Samples for the Month	Date(s) Sampled	Date(s) Obtained	Min Value	Max or Only Value	100%ile Limit	Exceedance (Yes/No)	Comments
11	TSS	mg/L	Special Frequency 1*	1	22/02/2022	2/03/2022	-	-	285	No	-
	Oil & Grease	mg/L					-	-	<5	No	
	pH	pH					-	-	7.82	No	
12	TSS	mg/L	Special Frequency 1*	0	-	-	-	-	-	-	-
	Oil & Grease	mg/L					-	-	-	-	
	pH	pH					-	-	-	-	

* Special Frequency 1 means the collection of samples as soon as practicable after each discharge commences and in any case not more than 12 hours after each discharge commences.

** Special Frequency 2 means collection of samples quarterly (in the event of flow during the quarter) at a time when there is flow and as soon as practicable after each wet weather discharge from points 11 and 12 commences and in any case not more than 12 hours after each discharge commences.



WHITEHAVEN COAL

Rocgen Coal Mine- Monthly Monitoring Summary

Table 3 – Monitoring (Quarterly & Yearly – No Limits apply)

EPL ID	Pollutant	Units of Measure	Monitoring Frequency	No. of Samples for the Month	Date Sampled	Date Obtained	Min Value	Mean Value	Median Value	Max Value/Only Value
16	Aluminium	mg/L	Yearly	0			-	-	-	-
	Arsenic	mg/L					-	-	-	-
	Bicarbonate	mg/L					-	-	-	-
	Chloride	mg/L					-	-	-	-
	Iron	mg/L					-	-	-	-
	Manganese	mg/L					-	-	-	-
	Sodium	mg/L					-	-	-	-
16	Conductivity	µS/cm	Quarterly	1	21/02/2022	7/03/2022	-	-	-	540
	Oil & Grease	mg/L					-	-	-	<5
	pH	pH					-	-	-	7.96
	TOC	mg/L					-	-	-	5
	TSS	mg/L					-	-	-	76



WHITEHAVEN COAL

Rocglen Coal Mine- Monthly Monitoring Summary
Figure 1 – EPL 12870 Monitoring Locations





Rocglen Coal Mine- Monthly Monitoring Summary

Site Information

EPL No: 12870

EPA Website Link: <http://epa.nsw.gov.au/prpoeoapp/ViewPOEOLicence.aspx?DOCID=40278&SYSUID=1&LICID=12870>

Licensee: Whitehaven Coal Mining Pty Ltd

Licensee Address: Rocglen Coal Mine, Wean Road, GUNNEDAH NSW 2380

EPL Monitoring Points: See Figure 1 below

Sampling Period: March 2022

Obtained Date: 14th April 2022

Publication Date: 20th April 2022

Table 1 - No Pollutant Limits Apply

EPL ID	Pollutant	Units of Measure	Monitoring Frequency	No. of Samples for the Month	Date(s) Sampled	Date(s) Obtained	Min Value	Mean Value	Median Value	Max or Only Value
4	Particulates-Deposited Matter (BD4)	g/m ² /month	Continuous	1	16/03/2022	31/03/2022	-	-	-	1.01
6	Particulates-Deposited Matter (BD6)	g/m ² /month	Continuous	1	16/03/2022	31/03/2022	-	-	-	1.43
10	PM ₁₀	µg/m ³	Every 6 days	5	Various	14/04/2022	4.3	14.8	5.3	53.7
11	Conductivity	µS/cm	Special Frequency 1*	2	8/03/2022, 28/03/2022	17/03/2022, 7/04/2022	348	352	352	356
	Total Organic Carbon	mg/L					5	11	10.5	16
12	Conductivity	µS/cm	Special Frequency 1*	0	-	-	-	-	-	-
	Total Organic Carbon	mg/L					-	-	-	-
13	TSS	mg/L	Special Frequency 2**	0	-	-	-	-	-	-
	Conductivity	µS/cm					-	-	-	-
	Oil & Grease	mg/L					-	-	-	-
	pH	pH					-	-	-	-
	Total organic carbon	mg/L					-	-	-	-



Rocgen Coal Mine- Monthly Monitoring Summary

EPL ID	Pollutant	Units of Measure	Monitoring Frequency	No. of Samples for the Month	Date(s) Sampled	Date(s) Obtained	Min Value	Mean Value	Median Value	Max or Only Value
14	TSS	mg/L	Special Frequency 2**	1	28/03/2022	7/04/2022	-	-	-	7.22
	Conductivity	µS/cm					-	-	-	276
	Oil & Grease	mg/L					-	-	-	<5
	pH	pH					-	-	-	16
	Total organic carbon	mg/L					-	-	-	286
15	TSS	mg/L	Special Frequency 2**	0	-	-	-	-	-	-
	Conductivity	µS /cm					-	-	-	-
	Oil & Grease	mg/L					-	-	-	-
	pH	pH					-	-	-	-
	Total organic carbon	mg/L					-	-	-	-

Table 2 - Pollutant Limits Apply

EPL ID	Pollutant	Units of Measure	Monitoring Frequency	No. of Samples for the Month	Date(s) Sampled	Date(s) Obtained	Min Value	Max or Only Value	100%ile Limit	Exceedance (Yes/No)	Comments
11	TSS	mg/L	Special Frequency 1*	2	8/03/2022, 28/03/2022	17/03/2022, 7/04/2022	911	1566	50	No	Both result of >38.5mm of rainfall. No limit on TSS.
	Oil & Grease	mg/L					<5	<5	10	No	
	pH	pH					7.76	7.77	6.5-8.5	No	
12	TSS	mg/L	Special Frequency 1*	0	-	-	-	-	50	-	-
	Oil & Grease	mg/L					-	-	10	-	
	pH	pH					-	-	6.5-8.5	-	

* Special Frequency 1 means the collection of samples as soon as practicable after each discharge commences and, in any case, not more than 12 hours after each discharge commences.

** Special Frequency 2 means collection of samples quarterly (in the event of flow during the quarter) at a time when there is flow and as soon as practicable after each wet weather discharge from points 11 and 12 commences and in any case not more than 12 hours after each discharge commences.

Rocgen Coal Mine- Monthly Monitoring Summary
Table 3 – Monitoring (Quarterly & Yearly – No Limits apply)

EPL ID	Pollutant	Units of Measure	Monitoring Frequency	No. of Samples for the Month	Date Sampled	Date Obtained	Min Value	Mean Value	Median Value	Max Value/Only Value
16	Aluminium	mg/L	Yearly	0	-	-	-	-	-	-
	Arsenic	mg/L					-	-	-	-
	Bicarbonate	mg/L					-	-	-	-
	Chloride	mg/L					-	-	-	-
	Iron	mg/L					-	-	-	-
	Manganese	mg/L					-	-	-	-
	Sodium	mg/L					-	-	-	-
16	Conductivity	µS/cm	Quarterly	0	-	-	-	-	-	-
	Oil & Grease	mg/L					-	-	-	-
	pH	pH					-	-	-	-
	TOC	mg/L					-	-	-	-
	TSS	mg/L					-	-	-	-



WHITEHAVEN COAL

Rocglen Coal Mine- Monthly Monitoring Summary

Figure 1 – EPL 12870 Monitoring Locations





Rocglen Coal Mine- Monthly Monitoring Summary

Site Information

EPL No: 12870

EPA Website Link: <http://epa.nsw.gov.au/prpoeoapp/ViewPOEOLicence.aspx?DOCID=40278&SYSUID=1&LICID=12870>

Licensee: Whitehaven Coal Mining Pty Ltd

Licensee Address: Rocglen Coal Mine, Wean Road, GUNNEDAH NSW 2380

EPL Monitoring Points: See Figure 1 below

Sampling Period: April 2022

Obtained Date: 11th May 2022

Publication Date: 18th May 2022

Table 1 - No Pollutant Limits Apply

EPL ID	Pollutant	Units of Measure	Monitoring Frequency	No. of Samples for the Month	Date(s) Sampled	Date(s) Obtained	Min Value	Mean Value	Median Value	Max or Only Value
4	Particulates-Deposited Matter (BD4)	g/m ² /month	Continuous	1	13/04/2022	11/05/2022	-	-	-	3.08
6	Particulates-Deposited Matter (BD6)	g/m ² /month	Continuous	1	13/04/2022	11/05/2022	-	-	-	1.21
10	PM ₁₀	µg/m ³	Every 6 days	5	4/04/2022, 10/04/2022, 16/04/2022, 22/04/2022, 28/04/2022	Last result received 11/05/2022	1.5	12.6	1.7	55.3
11	Conductivity	µS/cm	Special Frequency 1*	0	-	-	-	-	-	-
	Total Organic Carbon	mg/L					-	-	-	-
12	Conductivity	µS/cm	Special Frequency 1*	0	-	-	-	-	-	-
	Total Organic Carbon	mg/L					-	-	-	-
13	TSS	mg/L	Special Frequency 2**	0	-	-	-	-	-	-
	Conductivity	µS/cm					-	-	-	-
	Oil & Grease	mg/L					-	-	-	-
	pH	pH					-	-	-	-



WHITEHAVEN COAL

Rocgen Coal Mine- Monthly Monitoring Summary

EPL ID	Pollutant	Units of Measure	Monitoring Frequency	No. of Samples for the Month	Date(s) Sampled	Date(s) Obtained	Min Value	Mean Value	Median Value	Max or Only Value
	Total organic carbon	mg/L					-	-	-	-
14	TSS	mg/L	Special Frequency 2**	0	-	-	-	-	-	-
	Conductivity	µS/cm					-	-	-	-
	Oil & Grease	mg/L					-	-	-	-
	pH	pH					-	-	-	-
	Total organic carbon	mg/L					-	-	-	-
15	TSS	mg/L	Special Frequency 2**	0	-	-	-	-	-	-
	Conductivity	µS/cm					-	-	-	-
	Oil & Grease	mg/L					-	-	-	-
	pH	pH					-	-	-	-
	Total organic carbon	mg/L					-	-	-	-

Table 2 - Pollutant Limits Apply

EPL ID	Pollutant	Units of Measure	Monitoring Frequency	No. of Samples for the Month	Date(s) Sampled	Date(s) Obtained	Min Value	Max or Only Value	100%ile Limit	Exceedance (Yes/No)	Comments
11	TSS	mg/L	Special Frequency 1*	0	-	-	-	-	-	-	-
	Oil & Grease	mg/L					-	-	-	-	
	pH	pH					-	-	-	-	
12	TSS	mg/L	Special Frequency 1*	0	-	-	-	-	-	-	-
	Oil & Grease	mg/L					-	-	-	-	
	pH	pH					-	-	-	-	

* Special Frequency 1 means the collection of samples as soon as practicable after each discharge commences and in any case not more than 12 hours after each discharge commences.

Rocgen Coal Mine- Monthly Monitoring Summary

** Special Frequency 2 means collection of samples quarterly (in the event of flow during the quarter) at a time when there is flow and as soon as practicable after each wet weather discharge from points 11 and 12 commences and in any case not more than 12 hours after each discharge commences.

Table 3 – Monitoring (Quarterly & Yearly – No Limits apply)

EPL ID	Pollutant	Units of Measure	Monitoring Frequency	No. of Samples for the Month	Date Sampled	Date Obtained	Min Value	Mean Value	Median Value	Max Value/Only Value
16	Aluminium	mg/L	Yearly	0	-	-	-	-	-	-
	Arsenic	mg/L					-	-	-	-
	Bicarbonate	mg/L					-	-	-	-
	Chloride	mg/L					-	-	-	-
	Iron	mg/L					-	-	-	-
	Manganese	mg/L					-	-	-	-
	Sodium	mg/L					-	-	-	-
16	Conductivity	µS/cm	Quarterly	0	-	-	-	-	-	-
	Oil & Grease	mg/L					-	-	-	-
	pH	pH					-	-	-	-
	TOC	mg/L					-	-	-	-
	TSS	mg/L					-	-	-	-



WHITEHAVEN COAL

Rocglen Coal Mine- Monthly Monitoring Summary
Figure 1 – EPL 12870 Monitoring Locations





Rocglen Coal Mine- Monthly Monitoring Summary

Site Information

EPL No: 12870

EPA Website Link: <http://epa.nsw.gov.au/prpoeoapp/ViewPOEOLicence.aspx?DOCID=40278&SYSUID=1&LICID=12870>

Licensee: Whitehaven Coal Mining Pty Ltd

Licensee Address: Rocglen Coal Mine, Wean Road, GUNNEDAH NSW 2380

EPL Monitoring Points: See Figure 1 below

Sampling Period: May 2022

Obtained Date: 15th June 2022

Publication Date: 20th June 2022

Table 1 - No Pollutant Limits Apply

EPL ID	Pollutant	Units of Measure	Monitoring Frequency	No. of Samples for the Month	Date(s) Sampled	Date(s) Obtained	Min Value	Mean Value	Median Value	Max or Only Value
4	Particulates-Deposited Matter (BD4)	g/m ² /month	Continuous	1	13/05/2022	1/06/2022	-	-	-	1.34
6	Particulates-Deposited Matter (BD6)	g/m ² /month	Continuous	1	13/05/2022	1/06/2022	-	-	-	0.96
10	PM ₁₀	µg/m ³	Every 6 days	5	4/05/2022 10/05/2022 16/05/2022 22/05/2022 28/05/2022	15/06/2022 (Last result received)	0.2	1.7	2.2	2.5
11	Conductivity	µS/cm	Special Frequency 1*	3	5/05/2022 15/05/2022 23/05/2022	27/05/2022 23/05/2022 1/06/2022	289.5	342.2	365	385.7
	Total organic carbon	mg/L					2.4	3.1	3	4
12	Conductivity	µS/cm	Special Frequency 1*	0	-	-	-	-	-	-
	Total organic carbon	mg/L					-	-	-	-
13	TSS	mg/L	Special Frequency 2**(DDCK)	0	-	-	-	-	-	-
	Conductivity	µS/cm					-	-	-	-
	Oil & Grease	mg/L					-	-	-	-
	pH	pH					-	-	-	-
	Total organic carbon	mg/L					-	-	-	-



Rocgen Coal Mine- Monthly Monitoring Summary

EPL ID	Pollutant	Units of Measure	Monitoring Frequency	No. of Samples for the Month	Date(s) Sampled	Date(s) Obtained	Min Value	Mean Value	Median Value	Max or Only Value
14	TSS	mg/L	Special Frequency 2**(UNDC)	0			-	-	-	-
	Conductivity	µS/cm					-	-	-	-
	Oil & Grease	mg/L					-	-	-	-
	pH	pH					-	-	-	-
	Total organic carbon	mg/L					-	-	-	-
15	TSS	mg/L	Special Frequency 2**(SD7)	1	18/05/2022	27/05/2022	-	-	-	34
	Conductivity	µS/cm					-	-	-	250
	Oil & Grease	mg/L					-	-	-	<5
	pH	pH					-	-	-	7.6
	Total organic carbon	mg/L					-	-	-	14

Table 2 - Pollutant Limits Apply

EPL ID	Pollutant	Units of Measure	Monitoring Frequency	No. of Samples for the Month	Date(s) Sampled	Date(s) Obtained	Min Value	Max or Only Value	100%ile Limit	Exceedance (Yes/No)	Comments
11	TSS	mg/L	Special Frequency 1*	3	5/05/2022 15/05/2022 23/05/2022	27/05/2022 23/05/2022 1/06/2022	14	4540	50	No	wet weather discharge event (15/05) resulted in TSS of 4,540. Rainfall exceeded 38.4mm.
	Oil & Grease	mg/L					<5	<5	10	No	
	pH	pH					8.12	8.48	6.5-8.5	No	
12	TSS	mg/L	Special Frequency 1*	0			-	-	-	No	-
	Oil & Grease	mg/L					-	-	-	No	
	pH	pH					-	-	-	No	

* Special Frequency 1 means the collection of samples as soon as practicable after each discharge commences and in any case not more than 12 hours after each discharge commences.

** Special Frequency 2 means collection of samples quarterly (in the event of flow during the quarter) at a time when there is flow and as soon as practicable after each wet weather discharge from points 11 and 12 commences and in any case not more than 12 hours after each discharge commences.

Rocgen Coal Mine- Monthly Monitoring Summary

Table 3 – Monitoring (Quarterly & Yearly – No Limits apply)

EPL ID	Pollutant	Units of Measure	Monitoring Frequency	No. of Samples for the Month	Date Sampled	Date Obtained	Min Value	Mean Value	Median Value	Max Value/Only Value
16	Aluminium	mg/L	Yearly	1	18/05/2022	27/05/2022	-	-	-	109
	Arsenic	mg/L					-	-	-	0.015
	Bicarbonate	mg/L					-	-	-	138
	Chloride	mg/L					-	-	-	27
	Iron	mg/L					-	-	-	81.7
	Manganese	mg/L					-	-	-	1.06
	Sodium	mg/L					-	-	-	93
16	Conductivity	µS/cm	Quarterly	1	18/05/2022	27/05/2022	-	-	-	590
	Oil & Grease	mg/L					-	-	-	<5
	pH	pH					-	-	-	8.5
	TOC	mg/L					-	-	-	3
	TSS	mg/L					-	-	-	827



WHITEHAVEN COAL

Rocgen Coal Mine- Monthly Monitoring Summary

Figure 1 – EPL 12870 Monitoring Locations





Rocglen Coal Mine- Monthly Monitoring Summary

Site Information

EPL No: 12870

EPA Website Link: <http://epa.nsw.gov.au/prpoeoapp/ViewPOEOLicence.aspx?DOCID=40278&SYSUID=1&LICID=12870>

Licensee: Whitehaven Coal Mining Pty Ltd

Licensee Address: Rocglen Coal Mine, Wean Road, GUNNEDAH NSW 2380

EPL Monitoring Points: See Figure 1 below

Sampling Period: June 2022

Obtained Date: 8th July 2022

Publication Date: 19th July 2022

Table 1 - No Pollutant Limits Apply

EPL ID	Pollutant	Units of Measure	Monitoring Frequency	No. of Samples for the Month	Date(s) Sampled	Date(s) Obtained	Min Value	Mean Value	Median Value	Max or Only Value
4	Particulates-Deposited Matter (BD4)	g/m ² /month	Continuous	1	14/06/2022	29/06/2022	-	-	-	1.2
6	Particulates-Deposited Matter (BD6)	g/m ² /month	Continuous	1	14/06/2022	29/06/2022	-	-	-	1.1
10	PM ₁₀	µg/m ³	Every 6 days	5	3/06/2022 9/06/2022 15/06/2022 21/06/2022 27/06/2022	8/07/2022	0.05	2.35	3.2	4.1
11	Conductivity	µS/cm	Special Frequency 1*	2	2/06/2022 9/06/2022	14/06/2022 17/06/2022	300.5	332.75	332.75	365
	Total organic carbon	mg/L					2.4	2.7	2.7	3
12	Conductivity	µS/cm	Special Frequency 1*	0	-	-	-	-	-	-
	Total organic carbon	mg/L					-	-	-	-
13	TSS	mg/L	Special Frequency 2**(DDCK)	0	-	-	-	-	-	-
	Conductivity	µS/cm					-	-	-	-
	Oil & Grease	mg/L					-	-	-	-
	pH	pH					-	-	-	-



Rocgen Coal Mine- Monthly Monitoring Summary

EPL ID	Pollutant	Units of Measure	Monitoring Frequency	No. of Samples for the Month	Date(s) Sampled	Date(s) Obtained	Min Value	Mean Value	Median Value	Max or Only Value
	Total organic carbon	mg/L					-	-	-	-
14	TSS	mg/L	Special Frequency 2**(UNDC)	0	-	-	-	-	-	-
	Conductivity	µS/cm					-	-	-	-
	Oil & Grease	mg/L					-	-	-	-
	pH	pH					-	-	-	-
	Total organic carbon	mg/L					-	-	-	-
15	TSS	mg/L	Special Frequency 2** (SD7)	0	-	-	-	-	-	-
	Conductivity	µS /cm					-	-	-	-
	Oil & Grease	mg/L					-	-	-	-
	pH	pH					-	-	-	-
	Total organic carbon	mg/L					-	-	-	-

Table 2 - Pollutant Limits Apply

EPL ID	Pollutant	Units of Measure	Monitoring Frequency	No. of Samples for the Month	Date(s) Sampled	Date(s) Obtained	Min Value	Max or Only Value	100%ile Limit	Exceedance (Yes/No)	Comments
11	TSS	mg/L	Special Frequency 1*	2	2/06/2022 9/06/2022	14/06/2022 17/06/2022	2.5	10	50	No	Both Controlled discharges
	Oil & Grease	mg/L					5	5	10	No	
	pH	pH					8.39	8.49	6.5-8.5	No	
12	TSS	mg/L	Special Frequency 1*	0	-	-	-	-	-	No	-
	Oil & Grease	mg/L					-	-	-	No	
	pH	pH					-	-	-	No	

* Special Frequency 1 means the collection of samples as soon as practicable after each discharge commences and in any case not more than 12 hours after each discharge commences.

** Special Frequency 2 means collection of samples quarterly (in the event of flow during the quarter) at a time when there is flow and as soon as practicable after each wet weather discharge from points 11 and 12 commences and in any case not more than 12 hours after each discharge commences.



Rocgen Coal Mine- Monthly Monitoring Summary

Table 3 – Monitoring (Quarterly & Yearly – No Limits apply)

EPL ID	Pollutant	Units of Measure	Monitoring Frequency	No. of Samples for the Month	Date Sampled	Date Obtained	Min Value	Mean Value	Median Value	Max Value/Only Value
16	Aluminium	mg/L	Yearly	0	-	-	-	-	-	-
	Arsenic	mg/L					-	-	-	-
	Bicarbonate	mg/L					-	-	-	-
	Chloride	mg/L					-	-	-	-
	Iron	mg/L					-	-	-	-
	Manganese	mg/L					-	-	-	-
	Sodium	mg/L					-	-	-	-
16	Conductivity	µS/cm	Quarterly	0	-	-	-	-	-	-
	Oil & Grease	mg/L					-	-	-	-
	pH	pH					-	-	-	-
	TOC	mg/L					-	-	-	-
	TSS	mg/L					-	-	-	-



WHITEHAVEN COAL

Rocglen Coal Mine- Monthly Monitoring Summary

Figure 1 – EPL 12870 Monitoring Locations





Rocglen Coal Mine- Monthly Monitoring Summary

Site Information

EPL No: 12870

EPA Website Link: <http://epa.nsw.gov.au/prpoeoapp/ViewPOEOLicence.aspx?DOCID=40278&SYSUID=1&LICID=12870>

Licensee: Whitehaven Coal Mining Pty Ltd

Licensee Address: Rocglen Coal Mine, Wean Road, GUNNEDAH NSW 2380

EPL Monitoring Points: See Figure 1 below

Sampling Period: July 2022

Obtained Date: 9th August 2022

Publication Date: 19th August 2022

Table 1 - No Pollutant Limits Apply

EPL ID	Pollutant	Units of Measure	Monitoring Frequency	No. of Samples for the Month	Date(s) Sampled	Date(s) Obtained	Min Value	Mean Value	Median Value	Max or Only Value
4	Particulates-Deposited Matter (BD4)	g/m ² /month	Continuous	1	14/07/2022	3/08/2022	-	-	-	1.04
6	Particulates-Deposited Matter (BD6)	g/m ² /month	Continuous	1	14/07/2022	3/08/2022	-	-	-	0.62
10	PM ₁₀	µg/m ³	Every 6 days	5	3/07/2022 9/07/2022 15/07/2022 21/07/2022 27/07/2022	9/08/2022	0.05	0.75	0.4	2.8
11	Conductivity	µS/cm	Special Frequency 1*	0	-	-	-	-	-	-
	Total organic carbon	mg/L					-	-	-	-
12	Conductivity	µS/cm	Special Frequency 1*	0	-	-	-	-	-	-
	Total organic carbon	mg/L					-	-	-	-
13	TSS	mg/L	Special Frequency 2**(DDCK)	0	-	-	-	-	-	-
	Conductivity	µS/cm					-	-	-	-
	Oil & Grease	mg/L					-	-	-	-
	pH	pH					-	-	-	-



WHITEHAVEN COAL

Rocgen Coal Mine- Monthly Monitoring Summary

EPL ID	Pollutant	Units of Measure	Monitoring Frequency	No. of Samples for the Month	Date(s) Sampled	Date(s) Obtained	Min Value	Mean Value	Median Value	Max or Only Value
	Total organic carbon	mg/L					-	-	-	-
14	TSS	mg/L	Special Frequency 2**(UNDC)	0	-	-	-	-	-	-
	Conductivity	µS/cm					-	-	-	-
	Oil & Grease	mg/L					-	-	-	-
	pH	pH					-	-	-	-
	Total organic carbon	mg/L					-	-	-	-
15	TSS	mg/L	Special Frequency 2** (SD7)	0	-	-	-	-	-	-
	Conductivity	µS /cm					-	-	-	-
	Oil & Grease	mg/L					-	-	-	-
	pH	pH					-	-	-	-
	Total organic carbon	mg/L					-	-	-	-

Table 2 - Pollutant Limits Apply

EPL ID	Pollutant	Units of Measure	Monitoring Frequency	No. of Samples for the Month	Date(s) Sampled	Date(s) Obtained	Min Value	Max or Only Value	100%ile Limit	Exceedance (Yes/No)	Comments
11	TSS	mg/L	Special Frequency 1*	0	-	-	-	-	-	No	-
	Oil & Grease	mg/L					-	-	-	No	
	pH	pH					-	-	-	No	
12	TSS	mg/L	Special Frequency 1*	0	-	-	-	-	-	No	-
	Oil & Grease	mg/L					-	-	-	No	
	pH	pH					-	-	-	No	

* Special Frequency 1 means the collection of samples as soon as practicable after each discharge commences and in any case not more than 12 hours after each discharge commences.

** Special Frequency 2 means collection of samples quarterly (in the event of flow during the quarter) at a time when there is flow and as soon as practicable after each wet weather discharge from points 11 and 12 commences and in any case not more than 12 hours after each discharge commences.



Rocgen Coal Mine- Monthly Monitoring Summary

Table 3 – Monitoring (Quarterly & Yearly – No Limits apply)

EPL ID	Pollutant	Units of Measure	Monitoring Frequency	No. of Samples for the Month	Date Sampled	Date Obtained	Min Value	Mean Value	Median Value	Max Value/Only Value
16	Aluminium	mg/L	Yearly	0	-	-	-	-	-	-
	Arsenic	mg/L					-	-	-	-
	Bicarbonate	mg/L					-	-	-	-
	Chloride	mg/L					-	-	-	-
	Iron	mg/L					-	-	-	-
	Manganese	mg/L					-	-	-	-
	Sodium	mg/L					-	-	-	-
16	Conductivity	µS/cm	Quarterly	0	-	-	-	-	-	-
	Oil & Grease	mg/L					-	-	-	-
	pH	pH					-	-	-	-
	TOC	mg/L					-	-	-	-
	TSS	mg/L					-	-	-	-



WHITEHAVEN COAL

Rocgen Coal Mine- Monthly Monitoring Summary

Figure 1 – EPL 12870 Monitoring Locations





Rocglen Coal Mine- Monthly Monitoring Summary

Site Information

EPL No: 12870

EPA Website Link: <http://epa.nsw.gov.au/prpoeoapp/ViewPOEOLicence.aspx?DOCID=40278&SYSUID=1&LICID=12870>

Licensee: Whitehaven Coal Mining Pty Ltd

Licensee Address: Rocglen Coal Mine, Wean Road, GUNNEDAH NSW 2380

EPL Monitoring Points: See Figure 1 below

Sampling Period: August 2022

Obtained Date: 9th September 2022

Publication Date: 19th September 2022

Table 1 - No Pollutant Limits Apply

EPL ID	Pollutant	Units of Measure	Monitoring Frequency	No. of Samples for the Month	Date(s) Sampled	Date(s) Obtained	Min Value	Mean Value	Median Value	Max or Only Value
4	Particulates-Deposited Matter (BD4)	g/m ² /month	Continuous	1	8/08/2022	25/08/2022	-	-	-	0.57
6	Particulates-Deposited Matter (BD6)	g/m ² /month	Continuous	1	8/08/2022	25/08/2022	-	-	-	0.6
10	PM ₁₀	µg/m ³	Every 6 days	5	2/08/2022 8/08/2022 14/08/2022 20/08/2022 26/08/2022	9/09/2022	0.05	0.47	0.4	1
11	Conductivity	µS/cm	Special Frequency 1*	3	3/08/2022 5/08/2022 26/08/2022	5/09/2022	81.4	294.8	369.7	433.4
	Total organic carbon	mg/L					2	5	3	11
12	Conductivity	µS/cm	Special Frequency 1*	0	-	-	-	-	-	-
	Total organic carbon	mg/L					-	-	-	-
13	TSS	mg/L	Special Frequency 2**(DDCK)	1	5/08/2022	10/08/2022	-	-	-	68
	Conductivity	µS/cm					-	-	-	92
	Oil & Grease	mg/L					-	-	-	<5



WHITEHAVEN COAL

Rocgen Coal Mine- Monthly Monitoring Summary

EPL ID	Pollutant	Units of Measure	Monitoring Frequency	No. of Samples for the Month	Date(s) Sampled	Date(s) Obtained	Min Value	Mean Value	Median Value	Max or Only Value
	pH	pH					-	-	-	6.9
	Total organic carbon	mg/L					-	-	-	14
14	TSS	mg/L	Special Frequency 2**(UNDC)	1	5/08/2022	10/08/2022	-	-	-	351
	Conductivity	µS/cm					-	-	-	81.4
	Oil & Grease	mg/L					-	-	-	5
	pH	pH					-	-	-	7.09
	Total organic carbon	mg/L					-	-	-	12
15	TSS	mg/L	Special Frequency 2** (SD7)	1	10/08/2022	15/08/2022	-	-	-	1640
	Conductivity	µS /cm					-	-	-	180
	Oil & Grease	mg/L					-	-	-	<5
	pH	pH					-	-	-	7.3
	Total organic carbon	mg/L					-	-	-	15

Table 2 - Pollutant Limits Apply

EPL ID	Pollutant	Units of Measure	Monitoring Frequency	No. of Samples for the Month	Date(s) Sampled	Date(s) Obtained	Min Value	Max or Only Value	100%ile Limit	Exceedance (Yes/No)	Comments
11	TSS	mg/L	Special Frequency 1*	3	3/08/2022 5/08/2022 26/08/2022	5/09/2022	13	5450 (ww discharge)	50	No	2 controlled releases and 1 wet weather discharge (no TSS limit applies)
	Oil & Grease	mg/L					<5	<5	10	No	
	pH	pH					7.52	8.49	8.5	No	
12	TSS	mg/L	Special Frequency 1*	0	-	-	-	-	-	No	-
	Oil & Grease	mg/L					-	-	-	No	
	pH	pH					-	-	-	No	

* Special Frequency 1 means the collection of samples as soon as practicable after each discharge commences and in any case not more than 12 hours after each discharge commences.



WHITEHAVEN COAL

Rocgen Coal Mine- Monthly Monitoring Summary

** Special Frequency 2 means collection of samples quarterly (in the event of flow during the quarter) at a time when there is flow and as soon as practicable after each wet weather discharge from points 11 and 12 commences and in any case not more than 12 hours after each discharge commences.

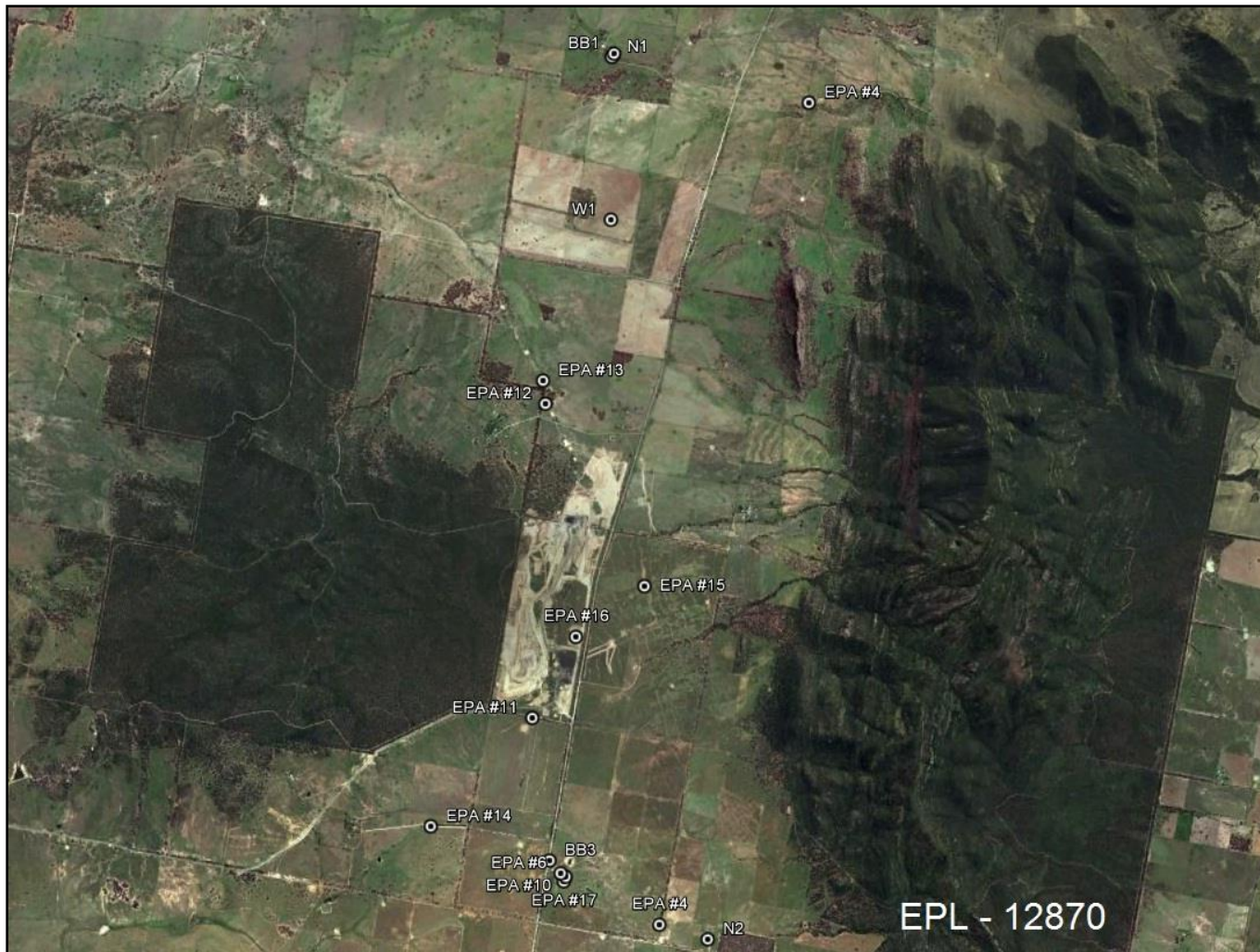
Table 3 – Monitoring (Quarterly & Yearly – No Limits apply)

EPL ID	Pollutant	Units of Measure	Monitoring Frequency	No. of Samples for the Month	Date Sampled	Date Obtained	Min Value	Mean Value	Median Value	Max Value/Only Value
16	Aluminium	mg/L	Yearly	0	-	-	-	-	-	-
	Arsenic	mg/L					-	-	-	-
	Bicarbonate	mg/L					-	-	-	-
	Chloride	mg/L					-	-	-	-
	Iron	mg/L					-	-	-	-
	Manganese	mg/L					-	-	-	-
	Sodium	mg/L					-	-	-	-
16	Conductivity	µS/cm	Quarterly	1	10/08/2022	15/09/2022	-	-	-	620
	Oil & Grease	mg/L					-	-	-	<5
	pH	pH					-	-	-	8.6
	TOC	mg/L					-	-	-	38
	TSS	mg/L					-	-	-	2020



Roclen Coal Mine- Monthly Monitoring Summary

Figure 1 – EPL 12870 Monitoring Locations



Site Information

EPL No: 12870

EPA Website Link: <http://epa.nsw.gov.au/prpoeoapp/ViewPOEOLicence.aspx?DOCID=40278&SYSUID=1&LICID=12870>



Rocglen Coal Mine- Monthly Monitoring Summary

Licensee: Whitehaven Coal Mining Pty Ltd

Licensee Address: Rocglen Coal Mine, Wean Road, GUNNEDAH NSW 2380

EPL Monitoring Points: See Figure 1 below

Sampling Period: September 2022

Obtained Date: 10th October 2022

Publication Date: 19th October 2022

Table 1 - No Pollutant Limits Apply

EPL ID	Pollutant	Units of Measure	Monitoring Frequency	No. of Samples for the Month	Date(s) Sampled	Date(s) Obtained	Min Value	Mean Value	Median Value	Max or Only Value
4	Particulates-Deposited Matter (BD4)	g/m ² /month	Continuous	1	13/09/2022	30/09/2022	-	-	-	5.74
6	Particulates-Deposited Matter (BD6)	g/m ² /month	Continuous	1	13/09/2022	30/09/2022	-	-	-	1.09
10	PM ₁₀	µg/m ³	Every 6 days	5	1/09/2022 7/09/2022 13/09/2022 19/09/2022 25/09/2022	10/10/2022	0.05	2.77	2	7.1
11	Conductivity	µS/cm	Special Frequency 1*	4	8/09/2022 14/09/2022 16/09/2022 22/09/2022	4/10/2022	117	198	210.5	254.1
	Total organic carbon	mg/L					3	8	6.5	16
12	Conductivity	µS/cm	Special Frequency 1*	0	-	-	-	-	-	-
	Total organic carbon	mg/L					-	-	-	-
13	TSS	mg/L	Special Frequency 2**(DDCK)	1	16/09/2022	27/09/2022	-	-	-	44
	Conductivity	µS/cm					-	-	-	87
	Oil & Grease	mg/L					-	-	-	<5
	pH	pH					-	-	-	7.13
	Total organic carbon	mg/L					-	-	-	12
14	TSS	mg/L			9/09/2022	4/10/2022	276	752	899	1080
	Conductivity	µS/cm					105.8	135.3	126.1	174.1



Rocgen Coal Mine- Monthly Monitoring Summary

EPL ID	Pollutant	Units of Measure	Monitoring Frequency	No. of Samples for the Month	Date(s) Sampled	Date(s) Obtained	Min Value	Mean Value	Median Value	Max or Only Value
	Oil & Grease	mg/L	Special Frequency 2**(UNDC)	3	16/09/2022 22/09/2022		<5	<5	<5	<5
	pH	pH					7.08	7.21	7.2	7.34
	Total organic carbon	mg/L					10	12	13	14
15	TSS	mg/L	Special Frequency 2** (SD7)	0	-	-	-	-	-	-
	Conductivity	µS /cm					-	-	-	-
	Oil & Grease	mg/L					-	-	-	-
	pH	pH					-	-	-	-
	Total organic carbon	mg/L					-	-	-	-

Table 2 - Pollutant Limits Apply

EPL ID	Pollutant	Units of Measure	Monitoring Frequency	No. of Samples for the Month	Date(s) Sampled	Date(s) Obtained	Min Value	Max or Only Value	100%ile Limit	Exceedance (Yes/No)	Comments
11	TSS	mg/L	Special Frequency 1*	4	8/09/2022 14/09/2022 16/09/2022 22/09/2022	4/10/2022	23	3480	50	No	-
	Oil & Grease	mg/L					<5	<5	10	No	
	pH	pH					7.38	8.5	8.5	No	
12	TSS	mg/L	Special Frequency 1*	0	-	-	-	-	-	No	-
	Oil & Grease	mg/L					-	-	-	No	
	pH	pH					-	-	-	No	

* Special Frequency 1 means the collection of samples as soon as practicable after each discharge commences and in any case not more than 12 hours after each discharge commences.

** Special Frequency 2 means collection of samples quarterly (in the event of flow during the quarter) at a time when there is flow and as soon as practicable after each wet weather discharge from points 11 and 12 commences and in any case not more than 12 hours after each discharge commences.

Table 3 – Monitoring (Quarterly & Yearly – No Limits apply)



Rocgen Coal Mine- Monthly Monitoring Summary

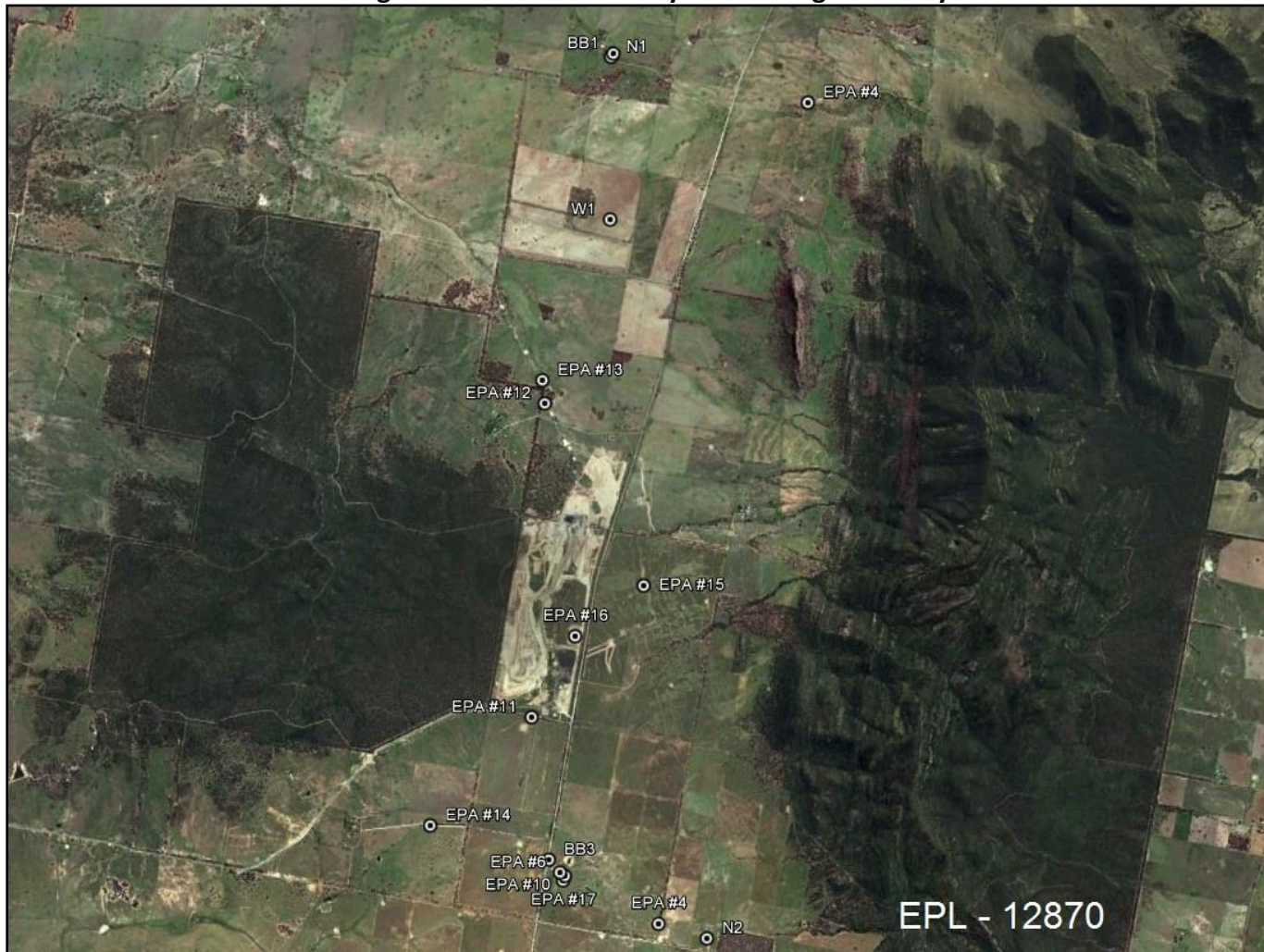
EPL ID	Pollutant	Units of Measure	Monitoring Frequency	No. of Samples for the Month	Date Sampled	Date Obtained	Min Value	Mean Value	Median Value	Max Value/Only Value
16	Aluminium	mg/L	Yearly	0	-	-	-	-	-	-
	Arsenic	mg/L					-	-	-	-
	Bicarbonate	mg/L					-	-	-	-
	Chloride	mg/L					-	-	-	-
	Iron	mg/L					-	-	-	-
	Manganese	mg/L					-	-	-	-
	Sodium	mg/L					-	-	-	-
16	Conductivity	µS/cm	Quarterly	0	-	-	-	-	-	-
	Oil & Grease	mg/L					-	-	-	-
	pH	pH					-	-	-	-
	TOC	mg/L					-	-	-	-
	TSS	mg/L					-	-	-	-

Figure 1 – EPL 12870 Monitoring Locations



WHITEHAVEN COAL

Rocgen Coal Mine- Monthly Monitoring Summary





Rocglen Coal Mine- Monthly Monitoring Summary

Site Information

EPL No: 12870

EPA Website Link: <http://epa.nsw.gov.au/prpoeoapp/ViewPOEOLicence.aspx?DOCID=40278&SYSUID=1&LICID=12870>

Licensee: Whitehaven Coal Mining Pty Ltd

Licensee Address: Rocglen Coal Mine, Wean Road, GUNNEDAH NSW 2380

EPL Monitoring Points: See Figure 1 below

Sampling Period: October 2022

Obtained Date: 11th November 2022

Publication Date: 17th November 2022

Table 1 - No Pollutant Limits Apply

EPL ID	Pollutant	Units of Measure	Monitoring Frequency	No. of Samples for the Month	Date(s) Sampled	Date(s) Obtained	Min Value	Mean Value	Median Value	Max or Only Value
4	Particulates-Deposited Matter (BD4)	g/m ² /month	Continuous	1	12/10/2022	28/10/2022	-	-	-	0.58
6	Particulates-Deposited Matter (BD6)	g/m ² /month	Continuous	1	12/10/2022	28/10/2022	-	-	-	1.24
10	PM ₁₀	µg/m ³	Every 6 days	6	1/10/2022 7/10/2022 14/10/2022 19/10/2022 25/10/2022 31/10/2022	11/11/2022 (Last result received)	1.8	2.9	2.55	5.4
11	Conductivity	µS/cm	Special Frequency 1*	3	5/10/2022 9/10/2022 21/10/2022	28/10/2022 (Last result received)	97.2	218.1	277.5	279.7
	Total organic carbon	mg/L					3	8	8.5	12
12	Conductivity	µS/cm	Special Frequency 1*	3	5/10/2022 21/10/2022 28/10/2022	3/11/2022 (Last result received)	145.7	261.9	298	342
	Total organic carbon	mg/L					6	13	6	26
13	TSS	mg/L	Special Frequency 2**(DDCK)	2	9/10/2022 21/10/2022	28/10/2022 (Last result received)	24	65	65	106
	Conductivity	µS/cm					68.1	86.4	86.4	104.7
	Oil & Grease	mg/L					<5	<5	<5	<5
	pH	pH					6.86	7.24	7.24	7.62



Rocgen Coal Mine- Monthly Monitoring Summary

EPL ID	Pollutant	Units of Measure	Monitoring Frequency	No. of Samples for the Month	Date(s) Sampled	Date(s) Obtained	Min Value	Mean Value	Median Value	Max or Only Value
	Total organic carbon	mg/L					12	15	14.5	17
14	TSS	mg/L	Special Frequency 2**(UNDC)	2	9/10/2022 21/10/2022	28/10/2022 (Last result received)	40	58	58	76
	Conductivity	µS/cm					67.1	116.3	116.3	165.5
	Oil & Grease	mg/L					<5	<5	<5	<5
	pH	pH					7.1	7.13	7.13	7.16
	Total organic carbon	mg/L					9	13	13	17
15	TSS	mg/L	Special Frequency 2** (SD7)	1	21/10/2022	28/10/2022 (Last result received)	-	-	-	31
	Conductivity	µS/cm					-	-	-	326
	Oil & Grease	mg/L					-	-	-	<5
	pH	pH					-	-	-	6.78
	Total organic carbon	mg/L					-	-	-	8

Table 2 - Pollutant Limits Apply

EPL ID	Pollutant	Units of Measure	Monitoring Frequency	No. of Samples for the Month	Date(s) Sampled	Date(s) Obtained	Min Value	Max or Only Value	100%ile Limit	Exceedance (Yes/No)	Comments
11	TSS	mg/L	Special Frequency 1*	3	5/10/2022 9/10/2022 21/10/2022	28/10/2022 (Last result received)	13	2280 (>38.4mm of rain)	50	No	-
	Oil & Grease	mg/L					<5	<5	10	No	
	pH	pH					7.34	8.43	8.5	No	
12	TSS	mg/L	Special Frequency 1*	3	5/10/2022 21/10/2022 28/10/2022	3/11/2022 (Last result received)	33	158 (>38.4mm of rain)	50	No	-
	Oil & Grease	mg/L					<5	<5	10	No	
	pH	pH					7.88	8.1	8.5	No	

* Special Frequency 1 means the collection of samples as soon as practicable after each discharge commences and, in any case, not more than 12 hours after each discharge commences.



Rocgen Coal Mine- Monthly Monitoring Summary

** Special Frequency 2 means collection of samples quarterly (in the event of flow during the quarter) at a time when there is flow and as soon as practicable after each wet weather discharge from points 11 and 12 commences and in any case not more than 12 hours after each discharge commences.

Table 3 – Monitoring (Quarterly & Yearly – No Limits apply)

EPL ID	Pollutant	Units of Measure	Monitoring Frequency	No. of Samples for the Month	Date Sampled	Date Obtained	Min Value	Mean Value	Median Value	Max Value/Only Value
16	Aluminium	mg/L	Yearly	0	-	-	-	-	-	-
	Arsenic	mg/L					-	-	-	-
	Bicarbonate	mg/L					-	-	-	-
	Chloride	mg/L					-	-	-	-
	Iron	mg/L					-	-	-	-
	Manganese	mg/L					-	-	-	-
	Sodium	mg/L					-	-	-	-
16	Conductivity	µS/cm	Quarterly	0	-	-	-	-	-	-
	Oil & Grease	mg/L					-	-	-	-
	pH	pH					-	-	-	-
	TOC	mg/L					-	-	-	-
	TSS	mg/L					-	-	-	-



WHITEHAVEN COAL

Rocgen Coal Mine- Monthly Monitoring Summary





Rocglen Coal Mine- Monthly Monitoring Summary

Site Information

EPL No: 12870

EPA Website Link: <http://epa.nsw.gov.au/prpoeoapp/ViewPOEOLicence.aspx?DOCID=40278&SYSUID=1&LICID=12870>

Licensee: Whitehaven Coal Mining Pty Ltd

Licensee Address: Rocglen Coal Mine, Wean Road, GUNNEDAH NSW 2380

EPL Monitoring Points: See Figure 1 below

Sampling Period: November 2022

Obtained Date: 16th December 2022

Publication Date: 20th December 2022

Table 1 - No Pollutant Limits Apply

EPL ID	Pollutant	Units of Measure	Monitoring Frequency	No. of Samples for the Month	Date(s) Sampled	Date(s) Obtained	Min Value	Mean Value	Median Value	Max or Only Value
4	Particulates-Deposited Matter (BD4)	g/m ² /month	Continuous	1	10/11/2022	12/10/2022	-	-	-	0.6
6	Particulates-Deposited Matter (BD6)	g/m ² /month	Continuous	1	10/11/2022	12/10/2022	-	-	-	1.2
10	PM ₁₀	µg/m ³	Every 6 days	5	6/11/2022 12/11/2022 18/11/2022 24/11/2022 30/11/2022	16/11/2022 (Last result received)	0.05	6.47	4.4	16.8
11	Conductivity	µS/cm	Special Frequency 1*	2	1/11/2022 14/11/2022	10/11/2022 18/11/2022	167.9	552.95	552.95	938
	Total organic carbon	mg/L					13	17	16.5	20
12	Conductivity	µS/cm	Special Frequency 1*	2	14/11/2022 23/11/2022	18/11/2022 1/12/2022	266	271	271	276
	Total organic carbon	mg/L					6	6	6	6
13	TSS	mg/L	Special Frequency 2**(DDCK)	2	1/11/2022 14/11/2022	10/11/2022 18/11/2022	15	36	35.5	56
	Conductivity	µS/cm					158	281	281	404
	Oil & Grease	mg/L					<5	<5	<5	<5
	pH	pH					7.3	7.6	7.55	7.8



Rocgen Coal Mine- Monthly Monitoring Summary

EPL ID	Pollutant	Units of Measure	Monitoring Frequency	No. of Samples for the Month	Date(s) Sampled	Date(s) Obtained	Min Value	Mean Value	Median Value	Max or Only Value
	Total organic carbon	mg/L					18	27	27	36
14	TSS	mg/L	Special Frequency 2**(UNDC)	2	1/11/2022 14/11/2022	10/11/2022 18/11/2022	33	39	39	45
	Conductivity	µS/cm					100.8	101.4	101.4	102
	Oil & Grease	mg/L					<5	<5	<5	<5
	pH	pH					6.84	6.85	6.85	6.85
	Total organic carbon	mg/L					12	13	13	14
15	TSS	mg/L	Special Frequency 2** (SD7)	1	1/11/2022	10/11/2022				29
	Conductivity	µS /cm								43.8
	Oil & Grease	mg/L								<5
	pH	pH								6.55
	Total organic carbon	mg/L								13

Table 2 - Pollutant Limits Apply

EPL ID	Pollutant	Units of Measure	Monitoring Frequency	No. of Samples for the Month	Date(s) Sampled	Date(s) Obtained	Min Value	Max or Only Value	100%ile Limit	Exceedance (Yes/No)	Comments
11	TSS	mg/L	Special Frequency 1*	2	1/11/2022 14/11/2022	10/11/2022 18/11/2022	136	1880	50	No	-
	Oil & Grease	mg/L					<5	<5	10	No	
	pH	pH					7.81	8.38	8.5	No	
12	TSS	mg/L	Special Frequency 1*	2	14/11/2022 23/11/2022	18/11/2022 1/12/2022	26	36	50	No	-
	Oil & Grease	mg/L					<5	<5	10	No	
	pH	pH					8.06	8.06	8.5	No	

* Special Frequency 1 means the collection of samples as soon as practicable after each discharge commences and, in any case, not more than 12 hours after each discharge commences.

** Special Frequency 2 means collection of samples quarterly (in the event of flow during the quarter) at a time when there is flow and as soon as practicable after each wet weather discharge from points 11 and 12 commences and in any case not more than 12 hours after each discharge commences.



WHITEHAVEN COAL

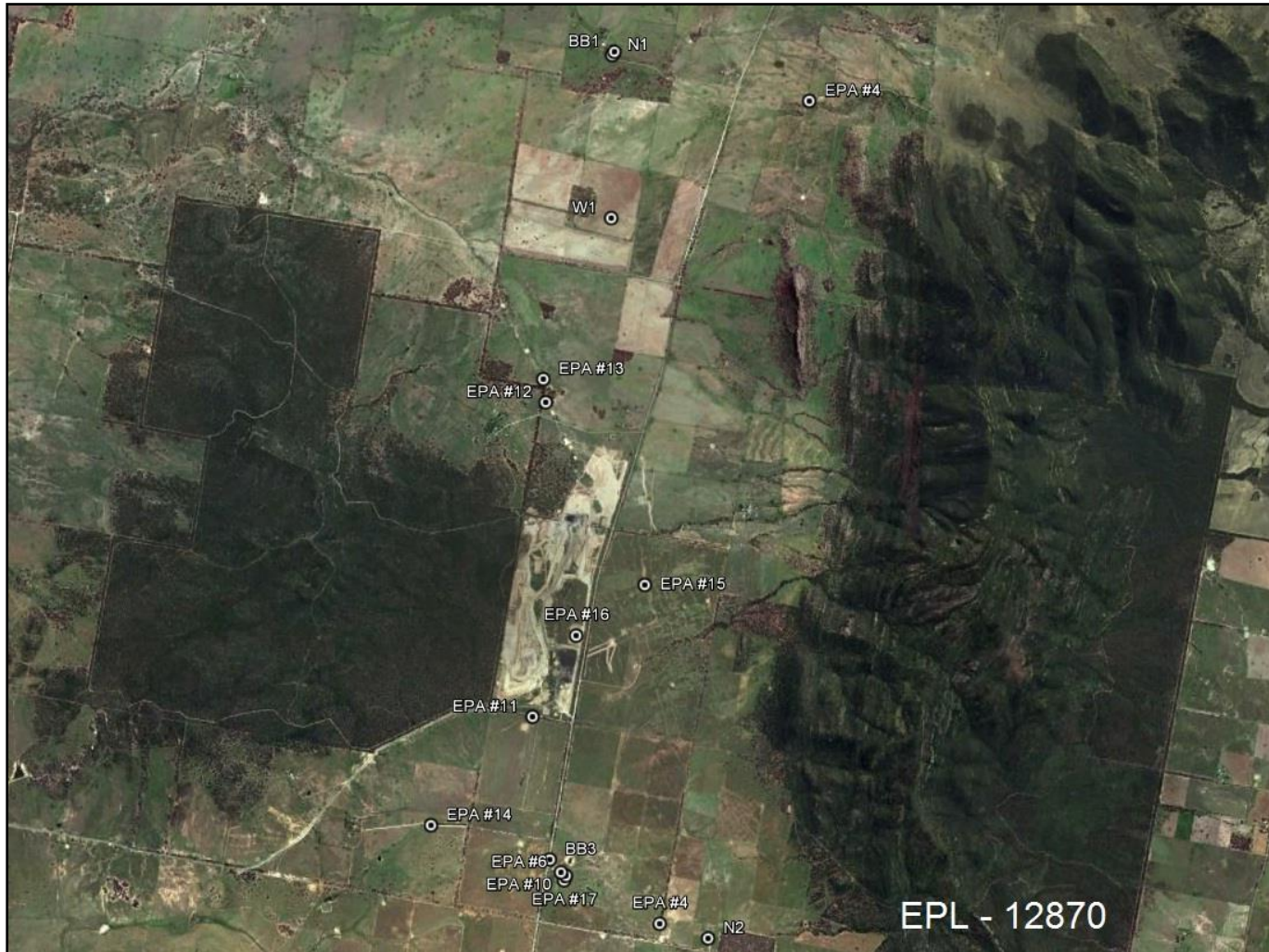
Rocgen Coal Mine- Monthly Monitoring Summary
Table 3 – Monitoring (Quarterly & Yearly – No Limits apply)

EPL ID	Pollutant	Units of Measure	Monitoring Frequency	No. of Samples for the Month	Date Sampled	Date Obtained	Min Value	Mean Value	Median Value	Max Value/Only Value
16	Aluminium	mg/L	Yearly	0	-	-	-	-	-	-
	Arsenic	mg/L					-	-	-	-
	Bicarbonate	mg/L					-	-	-	-
	Chloride	mg/L					-	-	-	-
	Iron	mg/L					-	-	-	-
	Manganese	mg/L					-	-	-	-
	Sodium	mg/L					-	-	-	-
16	Conductivity	µS/cm	Quarterly	0	-	-	-	-	-	-
	Oil & Grease	mg/L					-	-	-	-
	pH	pH					-	-	-	-
	TOC	mg/L					-	-	-	-
	TSS	mg/L					-	-	-	-



WHITEHAVEN COAL

Roglen Coal Mine- Monthly Monitoring Summary





Rocglen Coal Mine- Monthly Monitoring Summary

Site Information

EPL No: 12870

EPA Website Link: <http://epa.nsw.gov.au/prpoeoapp/ViewPOEOLicence.aspx?DOCID=40278&SYSUID=1&LICID=12870>

Licensee: Whitehaven Coal Mining Pty Ltd

Licensee Address: Rocglen Coal Mine, Wean Road, GUNNEDAH NSW 2380

EPL Monitoring Points: See Figure 1 below

Sampling Period: December 2022

Obtained Date: 20th January 2023

Publication Date: 20th January 2023

Table 1 - No Pollutant Limits Apply

EPL ID	Pollutant	Units of Measure	Monitoring Frequency	No. of Samples for the Month	Date(s) Sampled	Date(s) Obtained	Min Value	Mean Value	Median Value	Max or Only Value
4	Particulates-Deposited Matter (BD4)	g/m ² /month	Continuous	1	16/12/2022	20/01/2023	-	-	-	1.49
6	Particulates-Deposited Matter (BD6)	g/m ² /month	Continuous	1	16/12/2022	20/01/2023	-	-	-	1.2
10	PM ₁₀	µg/m ³	Every 6 days	5	6/12/2022 12/12/2022 18/12/2022 24/12/2022 30/12/2022	16/01/2023 (Last result received)	0.5	6.29	6.9	12.6
11	Conductivity	µS/cm	Special Frequency 1*	0	-	-	-	-	-	-
	Total organic carbon	mg/L					-	-	-	-
12	Conductivity	µS/cm	Special Frequency 1*	0	-	-	-	-	-	-
	Total organic carbon	mg/L					-	-	-	-
13	TSS	mg/L	Special Frequency 2**(DDCK)	0	-	-	-	-	-	-
	Conductivity	µS/cm					-	-	-	-
	Oil & Grease	mg/L					-	-	-	-
	pH	pH					-	-	-	-



WHITEHAVEN COAL

Rocgen Coal Mine- Monthly Monitoring Summary

EPL ID	Pollutant	Units of Measure	Monitoring Frequency	No. of Samples for the Month	Date(s) Sampled	Date(s) Obtained	Min Value	Mean Value	Median Value	Max or Only Value
	Total organic carbon	mg/L					-	-	-	-
14	TSS	mg/L	Special Frequency 2**(UNDC)	0	-	-	-	-	-	-
	Conductivity	µS/cm					-	-	-	-
	Oil & Grease	mg/L					-	-	-	-
	pH	pH					-	-	-	-
	Total organic carbon	mg/L					-	-	-	-
15	TSS	mg/L	Special Frequency 2** (SD7)	0	-	-	-	-	-	-
	Conductivity	µS /cm					-	-	-	-
	Oil & Grease	mg/L					-	-	-	-
	pH	pH					-	-	-	-
	Total organic carbon	mg/L					-	-	-	-

Table 2 - Pollutant Limits Apply

EPL ID	Pollutant	Units of Measure	Monitoring Frequency	No. of Samples for the Month	Date(s) Sampled	Date(s) Obtained	Min Value	Max or Only Value	100%ile Limit	Exceedance (Yes/No)	Comments
11	TSS	mg/L	Special Frequency 1*	0	-	-	-	-	50	-	-
	Oil & Grease	mg/L					-	-	10	-	
	pH	pH					-	-	8.5	-	
12	TSS	mg/L	Special Frequency 1*	0	-	-	-	-	50	-	-
	Oil & Grease	mg/L					-	-	10	-	
	pH	pH					-	-	8.5	-	

* Special Frequency 1 means the collection of samples as soon as practicable after each discharge commences and, in any case, not more than 12 hours after each discharge commences.

** Special Frequency 2 means collection of samples quarterly (in the event of flow during the quarter) at a time when there is flow and as soon as practicable after each wet weather discharge from points 11 and 12 commences and in any case not more than 12 hours after each discharge commences.



WHITEHAVEN COAL

Rocgen Coal Mine- Monthly Monitoring Summary
Table 3 – Monitoring (Quarterly & Yearly – No Limits apply)

EPL ID	Pollutant	Units of Measure	Monitoring Frequency	No. of Samples for the Month	Date Sampled	Date Obtained	Min Value	Mean Value	Median Value	Max Value/Only Value
16	Aluminium	mg/L	Yearly	0	-	-	-	-	-	-
	Arsenic	mg/L					-	-	-	-
	Bicarbonate	mg/L					-	-	-	-
	Chloride	mg/L					-	-	-	-
	Iron	mg/L					-	-	-	-
	Manganese	mg/L					-	-	-	-
	Sodium	mg/L					-	-	-	-
16	Conductivity	µS/cm	Quarterly	0	-	-	-	-	-	-
	Oil & Grease	mg/L					-	-	-	-
	pH	pH					-	-	-	-
	TOC	mg/L					-	-	-	-
	TSS	mg/L					-	-	-	-



WHITEHAVEN COAL

Roglen Coal Mine- Monthly Monitoring Summary

