



Rocglen Coal Mine- Monthly Monitoring Summary

Site Information

EPL No: 12870

EPA Website Link: <http://epa.nsw.gov.au/prpoeoapp/ViewPOEOLicence.aspx?DOCID=40278&SYSUID=1&LICID=12870>

Licensee: Whitehaven Coal Mining Pty Ltd

Licensee Address: Rocglen Coal Mine, Wean Road, GUNNEDAH NSW 2380

EPL Monitoring Points: See Figure 1 below

Sampling Period: January 2021

Obtained Date: 4th February 2021

Publication Date: 20th February 2021

Table 1 - No Pollutant Limits Apply

EPL ID	Pollutant	Units of Measure	Monitoring Frequency	No. of Samples for the Month	Date(s) Sampled	Date(s) Obtained	Min Value	Mean Value	Median Value	Max or Only Value
4	Particulates-Deposited Matter (BD4)	g/m ² /month	Continuous	1	14/01/21	04/02/21	-	-	-	9.54
6	Particulates-Deposited Matter (BD6)	g/m ² /month	Continuous	1	14/01/21	04/02/21	-	-	-	1.19
10	PM ₁₀	µg/m ³	Every 6 days	5	Various	04/02/21	2.4	11.4	12.6	22.3
11	Conductivity	µS/cm	Special Frequency 1*	-	-	-	-	-	-	-
	Total organic carbon	mg/L					-	-	-	-
12	Conductivity	µS/cm	Special Frequency 1*	-	-	-	-	-	-	-
	Total organic carbon	mg/L					-	-	-	-
13	TSS	mg/L	Special Frequency 2**	-	-	-	-	-	-	-
	Conductivity	µS/cm					-	-	-	-
	Oil & Grease	mg/L					-	-	-	-
	pH	pH					-	-	-	-
	Total organic carbon	mg/L					-	-	-	-
14	TSS	mg/L		-	-	-	-	-	-	-
	Conductivity	µS/cm					-	-	-	-



WHITEHAVEN COAL

Rocgen Coal Mine- Monthly Monitoring Summary

EPL ID	Pollutant	Units of Measure	Monitoring Frequency	No. of Samples for the Month	Date(s) Sampled	Date(s) Obtained	Min Value	Mean Value	Median Value	Max or Only Value
	Oil & Grease	mg/L	Special Frequency 2**				-	-	-	-
	pH	pH					-	-	-	-
	Total organic carbon	mg/L					-	-	-	-
15	TSS	mg/L	Special Frequency 2**	-	-	-	-	-	-	-
	Conductivity	µS /cm					-	-	-	-
	Oil & Grease	mg/L					-	-	-	-
	pH	pH					-	-	-	-
	Total organic carbon	mg/L					-	-	-	-

Table 2 - Pollutant Limits Apply

EPL ID	Pollutant	Units of Measure	Monitoring Frequency	No. of Samples for the Month	Date(s) Sampled	Date(s) Obtained	Min Value	Max or Only Value	100%ile Limit	Exceedance (Yes/No)	Comments
11	TSS	mg/L	Special Frequency 1*	-	-	-	-	-	-	-	-
	Oil & Grease	mg/L					-	-	-	-	
	pH	pH					-	-	-	-	
12	TSS	mg/L	Special Frequency 1*	-	-	-	-	-	-	-	-
	Oil & Grease	mg/L					-	-	-	-	
	pH	pH					-	-	-	-	

* Special Frequency 1 means the collection of samples as soon as practicable after each discharge commences and in any case not more than 12 hours after each discharge commences.

** Special Frequency 2 means collection of samples quarterly (in the event of flow during the quarter) at a time when there is flow and as soon as practicable after each wet weather discharge from points 11 and 12 commences and in any case not more than 12 hours after each discharge commences.



WHITEHAVEN COAL

Rocgen Coal Mine- Monthly Monitoring Summary
Table 3 – Monitoring (Quarterly & Yearly – No Limits apply)

EPL ID	Pollutant	Units of Measure	Monitoring Frequency	No. of Samples for the Month	Date Sampled	Date Obtained	Min Value	Mean Value	Median Value	Max Value/Only Value
16	Aluminium	mg/L	Yearly	-	-	-	-	-	-	-
	Arsenic	mg/L					-	-	-	-
	Bicarbonate	mg/L					-	-	-	-
	Chloride	mg/L					-	-	-	-
	Iron	mg/L					-	-	-	-
	Manganese	mg/L					-	-	-	-
	Sodium	mg/L					-	-	-	-
16	Conductivity	µS/cm	Quarterly	-	-	-	-	-	-	-
	Oil & Grease	mg/L					-	-	-	-
	pH	pH					-	-	-	-
	TOC	mg/L					-	-	-	-
	TSS	mg/L					-	-	-	-



WHITEHAVEN COAL

Rocgen Coal Mine- Monthly Monitoring Summary

Figure 1 – EPL 12870 Monitoring Locations



Rocglen Coal Mine- Monthly Monitoring Summary

Site Information

EPL No: 12870

EPA Website Link: <http://epa.nsw.gov.au/prpoeoapp/ViewPOEOLicence.aspx?DOCID=40278&SYSUID=1&LICID=12870>

Licensee: Whitehaven Coal Mining Pty Ltd

Licensee Address: Rocglen Coal Mine, Wean Road, GUNNEDAH NSW 2380

EPL Monitoring Points: See Figure 1 below

Sampling Period: February 2021

Obtained Date: 11th March 2021

Publication Date: 20th March 2021

Table 1 - No Pollutant Limits Apply

EPL ID	Pollutant	Units of Measure	Monitoring Frequency	No. of Samples for the Month	Date(s) Sampled	Date(s) Obtained	Min Value	Mean Value	Median Value	Max or Only Value
4	Particulates-Deposited Matter (BD4)	g/m ² /month	Continuous	1	15/02/21	23/02/21	-	-	-	1.5
6	Particulates-Deposited Matter (BD6)	g/m ² /month	Continuous	1	15/02/21	23/02/21	-	-	-	1.5
10	PM ₁₀	µg/m ³	Every 6 days	5	Various	11/03/21	3.7	6.7	7.8	9.1
11	Conductivity	µS/cm	Special Frequency 1*	-	-	-	-	-	-	-
	Total organic carbon	mg/L		-	-	-	-	-	-	-
12	Conductivity	µS/cm	Special Frequency 1*	-	-	-	-	-	-	-
	Total organic carbon	mg/L		-	-	-	-	-	-	-
13	TSS	mg/L	Special Frequency 2**	-	-	-	-	-	-	-
	Conductivity	µS/cm		-	-	-	-	-	-	-
	Oil & Grease	mg/L		-	-	-	-	-	-	-
	pH	pH		-	-	-	-	-	-	-
	Total organic carbon	mg/L		-	-	-	-	-	-	-



Rocgen Coal Mine- Monthly Monitoring Summary

EPL ID	Pollutant	Units of Measure	Monitoring Frequency	No. of Samples for the Month	Date(s) Sampled	Date(s) Obtained	Min Value	Mean Value	Median Value	Max or Only Value
14	TSS	mg/L	Special Frequency 2**	-	-	-	-	-	-	-
	Conductivity	µS/cm					-	-	-	-
	Oil & Grease	mg/L					-	-	-	-
	pH	pH					-	-	-	-
	Total organic carbon	mg/L					-	-	-	-
15	TSS	mg/L	Special Frequency 2**	-	-	-	-	-	-	-
	Conductivity	µS /cm					-	-	-	-
	Oil & Grease	mg/L					-	-	-	-
	pH	pH					-	-	-	-
	Total organic carbon	mg/L					-	-	-	-

Table 2 - Pollutant Limits Apply

EPL ID	Pollutant	Units of Measure	Monitoring Frequency	No. of Samples for the Month	Date(s) Sampled	Date(s) Obtained	Min Value	Max or Only Value	100%ile Limit	Exceedance (Yes/No)	Comments
11	TSS	mg/L	Special Frequency 1*	-	-	-	-	-	-	-	-
	Oil & Grease	mg/L					-	-	-	-	
	pH	pH					-	-	-	-	
12	TSS	mg/L	Special Frequency 1*	-	-	-	-	-	-	-	-
	Oil & Grease	mg/L					-	-	-	-	
	pH	pH					-	-	-	-	

* Special Frequency 1 means the collection of samples as soon as practicable after each discharge commences and in any case not more than 12 hours after each discharge commences.

** Special Frequency 2 means collection of samples quarterly (in the event of flow during the quarter) at a time when there is flow and as soon as practicable after each wet weather discharge from points 11 and 12 commences and in any case not more than 12 hours after each discharge commences.



Rocgen Coal Mine- Monthly Monitoring Summary

Table 3 – Monitoring (Quarterly & Yearly – No Limits apply)

EPL ID	Pollutant	Units of Measure	Monitoring Frequency	No. of Samples for the Month	Date Sampled	Date Obtained	Min Value	Mean Value	Median Value	Max Value/Only Value
16	Aluminium	mg/L	Yearly	-	-	-	-	-	-	-
	Arsenic	mg/L					-	-	-	-
	Bicarbonate	mg/L					-	-	-	-
	Chloride	mg/L					-	-	-	-
	Iron	mg/L					-	-	-	-
	Manganese	mg/L					-	-	-	-
	Sodium	mg/L					-	-	-	-
16	Conductivity	µS/cm	Quarterly	-	-	-	-	-	-	-
	Oil & Grease	mg/L					-	-	-	-
	pH	pH					-	-	-	-
	TOC	mg/L					-	-	-	-
	TSS	mg/L					-	-	-	-



WHITEHAVEN COAL

Rocglen Coal Mine- Monthly Monitoring Summary
Figure 1 – EPL 12870 Monitoring Locations





Rocglen Coal Mine- Monthly Monitoring Summary

Site Information

EPL No: 12870

EPA Website Link: <http://epa.nsw.gov.au/prpoeoapp/ViewPOEOLicence.aspx?DOCID=40278&SYSUID=1&LICID=12870>

Licensee: Whitehaven Coal Mining Pty Ltd

Licensee Address: Rocglen Coal Mine, Wean Road, GUNNEDAH NSW 2380

EPL Monitoring Points: See Figure 1 below

Sampling Period: March 2021

Obtained Date: 13th April 2021

Publication Date: 19th April 2021

Table 1 - No Pollutant Limits Apply

EPL ID	Pollutant	Units of Measure	Monitoring Frequency	No. of Samples for the Month	Date(s) Sampled	Date(s) Obtained	Min Value	Mean Value	Median Value	Max or Only Value
4	Particulates-Deposited Matter (BD4)	g/m ² /month	Continuous	1	16/03/21	13/04/21	-	-	-	2.1
6	Particulates-Deposited Matter (BD6)	g/m ² /month	Continuous	1	16/03/21	13/04/21	-	-	-	5.9
10	PM ₁₀	µg/m ³	Every 6 days	5	Various	29/03/21	0.05	5.69	5.2	9.7
11	Conductivity	µS/cm	Special Frequency 1*	2	Various	30/03/2021	310	361	371	402
	Total Organic Carbon	mg/L					3	4.6	5	6
12	Conductivity	µS/cm	Special Frequency 1*	2	Various	1/04/2021	8	131.5	131.5	255
	Total Organic Carbon	mg/L					4	5	5	6
13	TSS	mg/L	Special Frequency 2**	2	-	-	20	58.5	58.5	97
	Conductivity	µS/cm					142	168.5	168.5	195
	Oil & Grease	mg/L					<5	<5	<5	<5
	pH	pH					7.11	7.46	7.46	7.82
	Total organic carbon	mg/L					12	14	14	16



WHITEHAVEN COAL

Rocgen Coal Mine- Monthly Monitoring Summary

EPL ID	Pollutant	Units of Measure	Monitoring Frequency	No. of Samples for the Month	Date(s) Sampled	Date(s) Obtained	Min Value	Mean Value	Median Value	Max or Only Value
14	TSS	mg/L	Special Frequency 2**	1			-	-	-	1310
	Conductivity	µS/cm					-	-	-	315
	Oil & Grease	mg/L					-	-	-	<5
	pH	pH					-	-	-	7.86
	Total organic carbon	mg/L					-	-	-	8
15	TSS	mg/L	Special Frequency 2**	1			-	-	-	25
	Conductivity	µS /cm					-	-	-	81
	Oil & Grease	mg/L					-	-	-	<5
	pH	pH					-	-	-	6.93
	Total organic carbon	mg/L					-	-	-	8

Table 2 - Pollutant Limits Apply

EPL ID	Pollutant	Units of Measure	Monitoring Frequency	No. of Samples for the Month	Date(s) Sampled	Date(s) Obtained	Min Value	Max or Only Value	100%ile Limit	Exceedance (Yes/No)	Comments
11	TSS	mg/L	Special Frequency 1*	2	Various	30/03/2021	301	5370	50	No (rainfall > 38.4mm of rain)	-
	Oil & Grease	mg/L					<5	<5	10	No	
	pH	pH					8.03	8.14	6.5-8.5	No	
12	TSS	mg/L	Special Frequency 1*	2	Various	1/04/2021	43	126	50	No (rainfall > 38.4mm of rain)	-
	Oil & Grease	mg/L					<5	<5	10	No	
	pH	pH					7.5	7.99	6.5-8.5	No	

* Special Frequency 1 means the collection of samples as soon as practicable after each discharge commences and, in any case, not more than 12 hours after each discharge commences.

** Special Frequency 2 means collection of samples quarterly (in the event of flow during the quarter) at a time when there is flow and as soon as practicable after each wet weather discharge from points 11 and 12 commences and in any case not more than 12 hours after each discharge commences.

Rocgen Coal Mine- Monthly Monitoring Summary

Table 3 – Monitoring (Quarterly & Yearly – No Limits apply)

EPL ID	Pollutant	Units of Measure	Monitoring Frequency	No. of Samples for the Month	Date Sampled	Date Obtained	Min Value	Mean Value	Median Value	Max Value/Only Value
16	Aluminium	mg/L	Yearly	-	-	-	-	-	-	-
	Arsenic	mg/L					-	-	-	-
	Bicarbonate	mg/L					-	-	-	-
	Chloride	mg/L					-	-	-	-
	Iron	mg/L					-	-	-	-
	Manganese	mg/L					-	-	-	-
	Sodium	mg/L					-	-	-	-
16	Conductivity	µS/cm	Quarterly	1	22/03/2021	30/03/2021	-	-	-	396
	Oil & Grease	mg/L					-	-	-	<5
	pH	pH					-	-	-	8.35
	TOC	mg/L					-	-	-	2
	TSS	mg/L					-	-	-	119



WHITEHAVEN COAL

Rocglen Coal Mine- Monthly Monitoring Summary

Figure 1 – EPL 12870 Monitoring Locations



Rocglen Coal Mine- Monthly Monitoring Summary

Site Information

EPL No: 12870

EPA Website Link: <http://epa.nsw.gov.au/prpoeoapp/ViewPOEOLicence.aspx?DOCID=40278&SYSUID=1&LICID=12870>

Licensee: Whitehaven Coal Mining Pty Ltd

Licensee Address: Rocglen Coal Mine, Wean Road, GUNNEDAH NSW 2380

EPL Monitoring Points: See Figure 1 below

Sampling Period: April 2021

Obtained Date: 10 May 2021

Publication Date: 19 May 2021

Table 1 - No Pollutant Limits Apply

EPL ID	Pollutant	Units of Measure	Monitoring Frequency	No. of Samples for the Month	Date(s) Sampled	Date(s) Obtained	Min Value	Mean Value	Median Value	Max or Only Value
4	Particulates-Deposited Matter (BD4)	g/m ² /month	Continuous	1	14/04/21	10/05/21	-	-	-	1.02
6	Particulates-Deposited Matter (BD6)	g/m ² /month	Continuous	1	14/04/21	10/05/21	-	-	-	0.83
10	PM ₁₀	µg/m ³	Every 6 days	5	Various	10/05/21	0.05	5.69	5.2	9.7
11	Conductivity	µS/cm	Special Frequency 1*	2	13/04/2021	10/05/2021	398	398	398	398
	Total Organic Carbon	mg/L			21/04/2021		2	2	2	2
12	Conductivity	µS/cm	Special Frequency 1*	0	-	-	-	-	-	-
	Total Organic Carbon	mg/L					-	-	-	-
13	TSS	mg/L	Special Frequency 2**	0	-	-	-	-	-	-
	Conductivity	µS/cm					-	-	-	-
	Oil & Grease	mg/L					-	-	-	-
	pH	pH					-	-	-	-
	Total organic carbon	mg/L					-	-	-	-



Rocgen Coal Mine- Monthly Monitoring Summary

EPL ID	Pollutant	Units of Measure	Monitoring Frequency	No. of Samples for the Month	Date(s) Sampled	Date(s) Obtained	Min Value	Mean Value	Median Value	Max or Only Value
14	TSS	mg/L	Special Frequency 2**	0	-	-	-	-	-	-
	Conductivity	µS/cm					-	-	-	-
	Oil & Grease	mg/L					-	-	-	-
	pH	pH					-	-	-	-
	Total organic carbon	mg/L					-	-	-	-
15	TSS	mg/L	Special Frequency 2**	0	-	-	-	-	-	-
	Conductivity	µS /cm					-	-	-	-
	Oil & Grease	mg/L					-	-	-	-
	pH	pH					-	-	-	-
	Total organic carbon	mg/L					-	-	-	-

Table 2 - Pollutant Limits Apply

EPL ID	Pollutant	Units of Measure	Monitoring Frequency	No. of Samples for the Month	Date(s) Sampled	Date(s) Obtained	Min Value	Max or Only Value	100%ile Limit	Exceedance (Yes/No)	Comments
11	TSS	mg/L	Special Frequency 1*	2	13/04/2021 21/04/2021	23/04/2021	46	76	50	No	Controlled release
	Oil & Grease	mg/L					<5	<5	10	No	
	pH	pH					8.09	8.12	6.5-8.5	No	
12	TSS	mg/L	Special Frequency 1*	0	-	-	-	-	-	-	-
	Oil & Grease	mg/L					-	-	-	-	
	pH	pH					-	-	-	-	

* Special Frequency 1 means the collection of samples as soon as practicable after each discharge commences and in any case not more than 12 hours after each discharge commences.



Rocgen Coal Mine- Monthly Monitoring Summary

** Special Frequency 2 means collection of samples quarterly (in the event of flow during the quarter) at a time when there is flow and as soon as practicable after each wet weather discharge from points 11 and 12 commences and in any case not more than 12 hours after each discharge commences.

Table 3 – Monitoring (Quarterly & Yearly – No Limits apply)

EPL ID	Pollutant	Units of Measure	Monitoring Frequency	No. of Samples for the Month	Date Sampled	Date Obtained	Min Value	Mean Value	Median Value	Max Value/Only Value
16	Aluminium	mg/L	Yearly	0	-	-	-	-	-	-
	Arsenic	mg/L					-	-	-	-
	Bicarbonate	mg/L					-	-	-	-
	Chloride	mg/L					-	-	-	-
	Iron	mg/L					-	-	-	-
	Manganese	mg/L					-	-	-	-
	Sodium	mg/L					-	-	-	-
16	Conductivity	µS/cm	Quarterly	0	-	-	-	-	-	-
	Oil & Grease	mg/L					-	-	-	-
	pH	pH					-	-	-	-
	TOC	mg/L					-	-	-	-
	TSS	mg/L					-	-	-	-



WHITEHAVEN COAL

Rocglen Coal Mine- Monthly Monitoring Summary
Figure 1 – EPL 12870 Monitoring Locations





Rocglen Coal Mine- Monthly Monitoring Summary

Site Information

EPL No: 12870

EPA Website Link: <http://epa.nsw.gov.au/prpoeoapp/ViewPOEOLicence.aspx?DOCID=40278&SYSUID=1&LICID=12870>

Licensee: Whitehaven Coal Mining Pty Ltd

Licensee Address: Rocglen Coal Mine, Wean Road, GUNNEDAH NSW 2380

EPL Monitoring Points: See Figure 1 below

Sampling Period: May 2021

Obtained Date: 11 June 2021

Publication Date: 18 June 2021

Table 1 - No Pollutant Limits Apply

EPL ID	Pollutant	Units of Measure	Monitoring Frequency	No. of Samples for the Month	Date(s) Sampled	Date(s) Obtained	Min Value	Mean Value	Median Value	Max or Only Value
4	Particulates-Deposited Matter (BD4)	g/m2/month	Continuous	1	13/05/21	25/05/21	-	-	-	1.45
6	Particulates-Deposited Matter (BD6)	g/m2/month	Continuous	1	13/05/21	25/05/21	-	-	-	2.71
10	PM ₁₀	µg/m ³	Every 6 days	5	Various	11/06/21	3.6	5.5	4.8	9.5
11	Conductivity	µS/cm	Special Frequency 1*	-	-	-	-	-	-	-
	Total Organic Carbon	mg/L					-	-	-	-
12	Conductivity	µS/cm	Special Frequency 1*	1	3/05/2021	10/05/2021	-	-	-	354
	Total Organic Carbon	mg/L					-	-	-	1
13	TSS	mg/L	Special Frequency 2**(DDCK)	-	-	-	-	-	-	-
	Conductivity	µS/cm					-	-	-	-
	Oil & Grease	mg/L					-	-	-	-
	pH	pH					-	-	-	-
	Total organic carbon	mg/L					-	-	-	-
14	TSS	mg/L		-	-	-	-	-	-	-
	Conductivity	µS/cm					-	-	-	-



Rocgen Coal Mine- Monthly Monitoring Summary

EPL ID	Pollutant	Units of Measure	Monitoring Frequency	No. of Samples for the Month	Date(s) Sampled	Date(s) Obtained	Min Value	Mean Value	Median Value	Max or Only Value
	Oil & Grease	mg/L	Special Frequency 2**(UNDC)				-	-	-	-
	pH	pH					-	-	-	-
	Total organic carbon	mg/L					-	-	-	-
15	TSS	mg/L	Special Frequency 2** (SD7)	-	-	-	-	-	-	-
	Conductivity	µS /cm					-	-	-	-
	Oil & Grease	mg/L					-	-	-	-
	pH	pH					-	-	-	-
	Total organic carbon	mg/L					-	-	-	-

Table 2 - Pollutant Limits Apply

EPL ID	Pollutant	Units of Measure	Monitoring Frequency	No. of Samples for the Month	Date(s) Sampled	Date(s) Obtained	Min Value	Max or Only Value	100%ile Limit	Exceedance (Yes/No)	Comments
11	TSS	mg/L	Special Frequency 1* (LDP11)	-	-	-	-	-	-	-	-
	Oil & Grease	mg/L					-	-	-	-	
	pH	pH					-	-	-	-	
12	TSS	mg/L	Special Frequency 1* (LDP12)	1	3/05/2021	10/05/2021	-	46	50	No	Controlled Discharge
	Oil & Grease	mg/L					-	<5	10	No	
	pH	pH					-	8.09	6.5-8.5	No	

* Special Frequency 1 means the collection of samples as soon as practicable after each discharge commences and in any case not more than 12 hours after each discharge commences.

** Special Frequency 2 means collection of samples quarterly (in the event of flow during the quarter) at a time when there is flow and as soon as practicable after each wet weather discharge from points 11 and 12 commences and in any case not more than 12 hours after each discharge commences.



WHITEHAVEN COAL

Rocgen Coal Mine- Monthly Monitoring Summary
Table 3 – Monitoring (Quarterly & Yearly – No Limits apply)

EPL ID	Pollutant	Units of Measure	Monitoring Frequency	No. of Samples for the Month	Date Sampled	Date Obtained	Min Value	Mean Value	Median Value	Max Value/Only Value
16	Aluminium	mg/L	Yearly	-	-	-	-	-	-	-
	Arsenic	mg/L					-	-	-	-
	Bicarbonate	mg/L					-	-	-	-
	Chloride	mg/L					-	-	-	-
	Iron	mg/L					-	-	-	-
	Manganese	mg/L					-	-	-	-
	Sodium	mg/L					-	-	-	-
16	Conductivity	µS/cm	Quarterly	1	26/05/2021	03/06/2021	-	-	-	439
	Oil & Grease	mg/L					-	-	-	<5
	pH	pH					-	-	-	8.23
	TOC	mg/L					-	-	-	<1
	TSS	mg/L					-	-	-	63



WHITEHAVEN COAL

Rocglen Coal Mine- Monthly Monitoring Summary
Figure 1 – EPL 12870 Monitoring Locations





Rocglen Coal Mine- Monthly Monitoring Summary

Site Information

EPL No: 12870

EPA Website Link: <http://epa.nsw.gov.au/prpoeoapp/ViewPOEOLicence.aspx?DOCID=40278&SYSUID=1&LICID=12870>

Licensee: Whitehaven Coal Mining Pty Ltd

Licensee Address: Rocglen Coal Mine, Wean Road, GUNNEDAH NSW 2380

EPL Monitoring Points: See Figure 1 below

Sampling Period: June 2021

Obtained Date: 8 July 2021

Publication Date: 19 July 2021

Table 1 - No Pollutant Limits Apply

EPL ID	Pollutant	Units of Measure	Monitoring Frequency	No. of Samples for the Month	Date(s) Sampled	Date(s) Obtained	Min Value	Mean Value	Median Value	Max or Only Value
4	Particulates-Deposited Matter (BD4)	g/m2/month	Continuous	1	10/06/2021	29/06/2021	-	-	-	0.55
6	Particulates-Deposited Matter (BD6)	g/m2/month	Continuous	1	10/06/2021	29/06/2021	-	-	-	2.07
10	PM ₁₀	µg/m ³	Every 6 days	5	Various	8/07/2021	0.05	1.98	0.05	8.8
11	Conductivity	µS/cm	Special Frequency 1*	1	10/06/2021	18/06/2021	-	-	-	416
	Total Organic Carbon	mg/L					-	-	-	1
12	Conductivity	µS/cm	Special Frequency 1*	-	-	-	-	-	-	-
	Total Organic Carbon	mg/L					-	-	-	-
13	TSS	mg/L	Special Frequency 2**(DDCK)	1	10/06/2021	18/06/2021	-	-	-	43
	Conductivity	µS/cm					-	-	-	199
	Oil & Grease	mg/L					-	-	-	<5
	pH	pH					-	-	-	7.49
	Total organic carbon	mg/L					-	-	-	19
14	TSS	mg/L		1	10/06/2021	18/06/2021	-	-	-	551
	Conductivity	µS/cm					-	-	-	223



Rocgen Coal Mine- Monthly Monitoring Summary

EPL ID	Pollutant	Units of Measure	Monitoring Frequency	No. of Samples for the Month	Date(s) Sampled	Date(s) Obtained	Min Value	Mean Value	Median Value	Max or Only Value
	Oil & Grease	mg/L	Special Frequency 2**(UNDC)				-	-	-	<5
	pH	pH					-	-	-	7.49
	Total organic carbon	mg/L					-	-	-	12
15	TSS	mg/L	Special Frequency 2**(SD7)	1	10/06/2021	18/06/2021	-	-	-	22
	Conductivity	µS /cm					-	-	-	91
	Oil & Grease	mg/L					-	-	-	<5
	pH	pH					-	-	-	7.59
	Total organic carbon	mg/L					-	-	-	4

Table 2 - Pollutant Limits Apply

EPL ID	Pollutant	Units of Measure	Monitoring Frequency	No. of Samples for the Month	Date(s) Sampled	Date(s) Obtained	Min Value	Max or Only Value	100%ile Limit	Exceedance (Yes/No)	Comments
11	TSS	mg/L	Special Frequency 1* (LDP11)	1	10/06/2021	13/06/2021	-	208	-	N/A	Rainfall well exceeded 38.4mm
	Oil & Grease	mg/L					-	<5	-	N	
	pH	pH					-	7.92	-	N	
12	TSS	mg/L	Special Frequency 1* (LDP12)	-	-	-	-	-	-	-	-
	Oil & Grease	mg/L					-	-	-	-	
	pH	pH					-	-	-	-	

* Special Frequency 1 means the collection of samples as soon as practicable after each discharge commences and, in any case, not more than 12 hours after each discharge commences.

** Special Frequency 2 means collection of samples quarterly (in the event of flow during the quarter) at a time when there is flow and as soon as practicable after each wet weather discharge from points 11 and 12 commences and in any case not more than 12 hours after each discharge commences.



WHITEHAVEN COAL

Roclen Coal Mine- Monthly Monitoring Summary
Table 3 – Monitoring (Quarterly & Yearly – No Limits apply)

EPL ID	Pollutant	Units of Measure	Monitoring Frequency	No. of Samples for the Month	Date Sampled	Date Obtained	Min Value	Mean Value	Median Value	Max Value/Only Value
16	Aluminium	mg/L	Yearly	-	-	-	-	-	-	-
	Arsenic	mg/L					-	-	-	-
	Bicarbonate	mg/L					-	-	-	-
	Chloride	mg/L					-	-	-	-
	Iron	mg/L					-	-	-	-
	Manganese	mg/L					-	-	-	-
	Sodium	mg/L					-	-	-	-
16	Conductivity	µS/cm	Quarterly	-	-	-	-	-	-	-
	Oil & Grease	mg/L					-	-	-	-
	pH	pH					-	-	-	-
	TOC	mg/L					-	-	-	-
	TSS	mg/L					-	-	-	-



WHITEHAVEN COAL

Rocglen Coal Mine- Monthly Monitoring Summary
Figure 1 – EPL 12870 Monitoring Locations





Rocglen Coal Mine- Monthly Monitoring Summary

Site Information

EPL No: 12870

EPA Website Link: <http://epa.nsw.gov.au/prpoeoapp/ViewPOEOLicence.aspx?DOCID=40278&SYSUID=1&LICID=12870>

Licensee: Whitehaven Coal Mining Pty Ltd

Licensee Address: Rocglen Coal Mine, Wean Road, GUNNEDAH NSW 2380

EPL Monitoring Points: See Figure 1 below

Sampling Period: July 2021

Obtained Date: 5 August 2021

Publication Date: 19 August 2021

Table 1 - No Pollutant Limits Apply

EPL ID	Pollutant	Units of Measure	Monitoring Frequency	No. of Samples for the Month	Date(s) Sampled	Date(s) Obtained	Min Value	Mean Value	Median Value	Max or Only Value
4	Particulates-Deposited Matter (BD4)	g/m ² /month	Continuous	1	12/07/21	18/08/21	-	-	-	0.49
6	Particulates-Deposited Matter (BD6)	g/m ² /month	Continuous	1	12/07/21	18/08/21	-	-	-	0.38
10	PM ₁₀	µg/m ³	Every 6 days	5	Various	05/08/21	0.7	1.8	1.3	3.4
11	Conductivity	µS/cm	Special Frequency 1*	-	-	-	-	-	-	-
	Total Organic Carbon	mg/L					-	-	-	-
12	Conductivity	µS/cm	Special Frequency 1*	-	-	-	-	-	-	-
	Total Organic Carbon	mg/L					-	-	-	-
13	TSS	mg/L	Special Frequency 2**(DDCK)	-	-	-	-	-	-	-
	Conductivity	µS/cm					-	-	-	-
	Oil & Grease	mg/L					-	-	-	-
	pH	pH					-	-	-	-
	Total organic carbon	mg/L					-	-	-	-
14	TSS	mg/L		-	-	-	-	-	-	-
	Conductivity	µS/cm					-	-	-	-



Rocgen Coal Mine- Monthly Monitoring Summary

EPL ID	Pollutant	Units of Measure	Monitoring Frequency	No. of Samples for the Month	Date(s) Sampled	Date(s) Obtained	Min Value	Mean Value	Median Value	Max or Only Value
	Oil & Grease	mg/L	Special Frequency 2**(UNDC)				-	-	-	-
	pH	pH					-	-	-	-
	Total organic carbon	mg/L					-	-	-	-
15	TSS	mg/L	Special Frequency 2** (SD7)	-	-	-	-	-	-	-
	Conductivity	µS /cm					-	-	-	-
	Oil & Grease	mg/L					-	-	-	-
	pH	pH					-	-	-	-
	Total organic carbon	mg/L					-	-	-	-

Table 2 - Pollutant Limits Apply

EPL ID	Pollutant	Units of Measure	Monitoring Frequency	No. of Samples for the Month	Date(s) Sampled	Date(s) Obtained	Min Value	Max or Only Value	100%ile Limit	Exceedance (Yes/No)	Comments
11	TSS	mg/L	Special Frequency 2* (LDP11)	-	-	-	-	-	-	-	-
	Oil & Grease	mg/L					-	-	-	-	
	pH	pH					-	-	-	-	
12	TSS	mg/L	Special Frequency 2* (LDP12)	-	-	-	-	-	-	-	-
	Oil & Grease	mg/L					-	-	-	-	
	pH	pH					-	-	-	-	

Rocgen Coal Mine- Monthly Monitoring Summary

* Special Frequency 1 means the collection of samples as soon as practicable after each discharge commences and in any case not more than 12 hours after each discharge commences.

** Special Frequency 2 means collection of samples quarterly (in the event of flow during the quarter) at a time when there is flow and as soon as practicable after each wet weather discharge from points 11 and 12 commences and in any case not more than 12 hours after each discharge commences.

Table 3 – Monitoring (Quarterly & Yearly – No Limits apply)

EPL ID	Pollutant	Units of Measure	Monitoring Frequency	No. of Samples for the Month	Date Sampled	Date Obtained	Min Value	Mean Value	Median Value	Max Value/Only Value
16	Aluminium	mg/L	Yearly	-	-	-	-	-	-	-
	Arsenic	mg/L					-	-	-	-
	Bicarbonate	mg/L					-	-	-	-
	Chloride	mg/L					-	-	-	-
	Iron	mg/L					-	-	-	-
	Manganese	mg/L					-	-	-	-
	Sodium	mg/L					-	-	-	-
16	Conductivity	µS/cm	Quarterly	-	-	-	-	-	-	-
	Oil & Grease	mg/L					-	-	-	-
	pH	pH					-	-	-	-
	TOC	mg/L					-	-	-	-
	TSS	mg/L					-	-	-	-



WHITEHAVEN COAL

Rocgen Coal Mine- Monthly Monitoring Summary
Figure 1 – EPL 12870 Monitoring Locations



Rocglen Coal Mine- Monthly Monitoring Summary

Site Information

EPL No: 12870

EPA Website Link: <http://epa.nsw.gov.au/prpoeoapp/ViewPOEOLicence.aspx?DOCID=40278&SYSUID=1&LICID=12870>

Licensee: Whitehaven Coal Mining Pty Ltd

Licensee Address: Rocglen Coal Mine, Wean Road, GUNNEDAH NSW 2380

EPL Monitoring Points: See Figure 1 below

Sampling Period: August 2021

Obtained Date: 13 Sept 2021

Publication Date: 20 Sept 2021

Table 1 - No Pollutant Limits Apply

EPL ID	Pollutant	Units of Measure	Monitoring Frequency	No. of Samples for the Month	Date(s) Sampled	Date(s) Obtained	Min Value	Mean Value	Median Value	Max or Only Value
4	Particulates-Deposited Matter (BD4)	g/m2/month	Continuous	1	12/08/21	23/08/21	-	-	-	0.43
6	Particulates-Deposited Matter (BD6)	g/m2/month	Continuous	1	12/08/21	23/08/21	-	-	-	0.60
10	PM ₁₀	µg/m ³	Every 6 days	6	Various	16/09/21	1.3	5.4	4.85	12.4
11	Conductivity	µS/cm	Special Frequency 1*	-	-	-	-	-	-	-
	Total Organic Carbon	mg/L					-	-	-	-
12	Conductivity	µS/cm	Special Frequency 1*	-	-	-	-	-	-	-
	Total Organic Carbon	mg/L					-	-	-	-
13	TSS	mg/L	Special Frequency 2**(DDCK)	-	-	-	-	-	-	-
	Conductivity	µS/cm					-	-	-	-
	Oil & Grease	mg/L					-	-	-	-
	pH	pH					-	-	-	-
	Total organic carbon	mg/L					-	-	-	-



WHITEHAVEN COAL

Rocgen Coal Mine- Monthly Monitoring Summary

EPL ID	Pollutant	Units of Measure	Monitoring Frequency	No. of Samples for the Month	Date(s) Sampled	Date(s) Obtained	Min Value	Mean Value	Median Value	Max or Only Value
14	TSS	mg/L	Special Frequency 2**(UNDC)	-	-	-	-	-	-	-
	Conductivity	µS/cm					-	-	-	-
	Oil & Grease	mg/L					-	-	-	-
	pH	pH					-	-	-	-
	Total organic carbon	mg/L					-	-	-	-
15	TSS	mg/L	Special Frequency 2**(SD7)	1	23/08/2021	13/09/2021	-	-	-	45
	Conductivity	µS /cm					-	-	-	110
	Oil & Grease	mg/L					-	-	-	<5
	pH	pH					-	-	-	7.90
	Total organic carbon	mg/L					-	-	-	15

Table 2 - Pollutant Limits Apply

EPL ID	Pollutant	Units of Measure	Monitoring Frequency	No. of Samples for the Month	Date(s) Sampled	Date(s) Obtained	Min Value	Max or Only Value	100%ile Limit	Exceedance (Yes/No)	Comments
11	TSS	mg/L	Special Frequency 2* (LDP11)	-	-	-	-	-	-	-	-
	Oil & Grease	mg/L					-	-	-	-	
	pH	pH					-	-	-	-	
12	TSS	mg/L	Special Frequency 2* (LDP12)	-	-	-	-	-	-	-	-
	Oil & Grease	mg/L					-	-	-	-	
	pH	pH					-	-	-	-	

* Special Frequency 1 means the collection of samples as soon as practicable after each discharge commences and in any case not more than 12 hours after each discharge commences.

** Special Frequency 2 means collection of samples quarterly (in the event of flow during the quarter) at a time when there is flow and as soon as practicable after each wet weather discharge from points 11 and 12 commences and in any case not more than 12 hours after each discharge commences.

Rocgen Coal Mine- Monthly Monitoring Summary

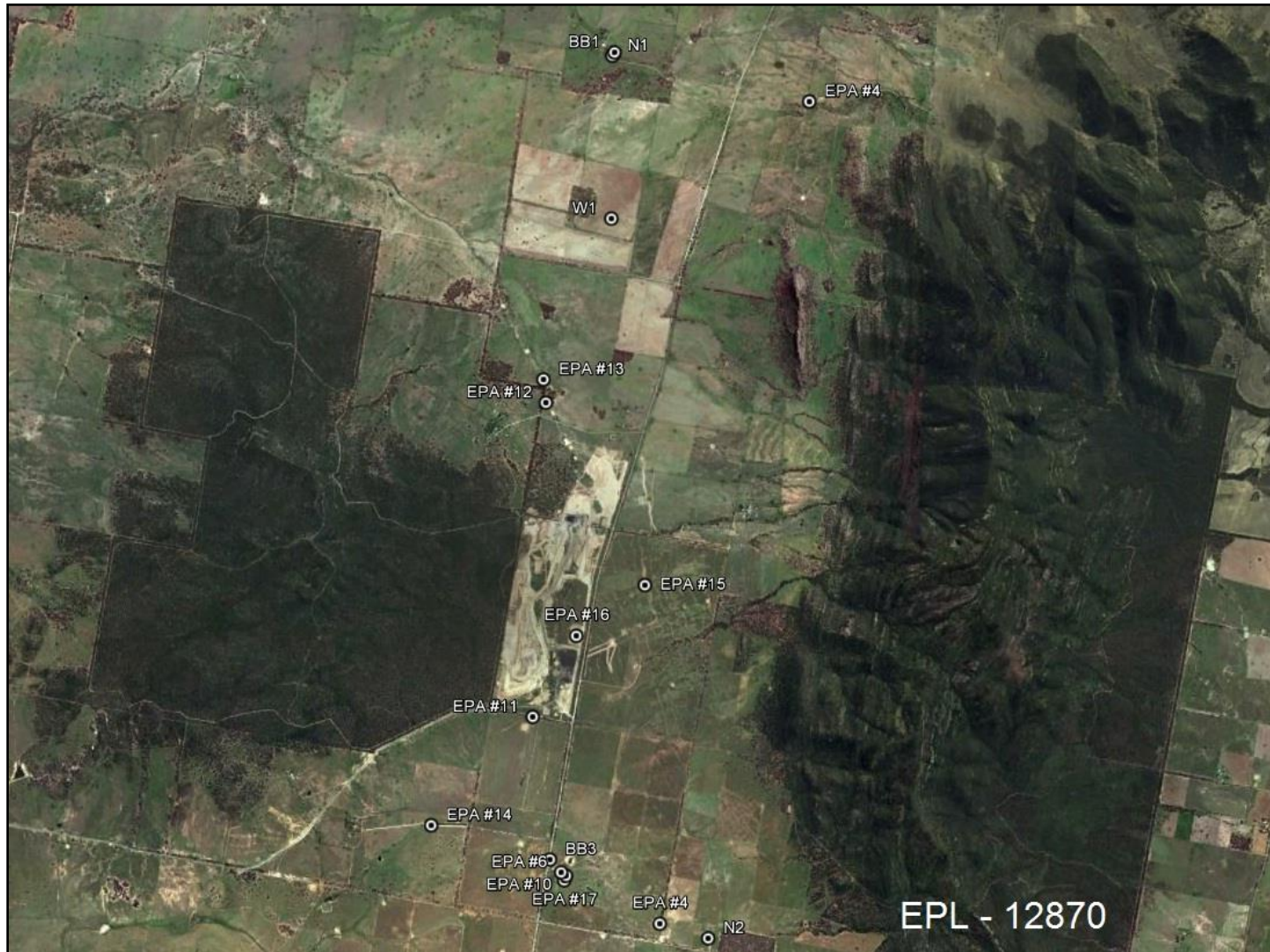
Table 3 – Monitoring (Quarterly & Yearly – No Limits apply)

EPL ID	Pollutant	Units of Measure	Monitoring Frequency	No. of Samples for the Month	Date Sampled	Date Obtained	Min Value	Mean Value	Median Value	Max Value/Only Value
16	Aluminium	mg/L	Yearly	-		-	-	-	-	-
	Arsenic	mg/L					-	-	-	-
	Bicarbonate	mg/L					-	-	-	-
	Chloride	mg/L					-	-	-	-
	Iron	mg/L					-	-	-	-
	Manganese	mg/L					-	-	-	-
	Sodium	mg/L					-	-	-	-
16	Conductivity	µS/cm	Quarterly	-	23/08/2021	13/09/2021	-	-	-	483
	Oil & Grease	mg/L					-	-	-	2.5
	pH	pH					-	-	-	8.4
	TOC	mg/L					-	-	-	6
	TSS	mg/L					-	-	-	338



WHITEHAVEN COAL

Rocgen Coal Mine- Monthly Monitoring Summary
Figure 1 – EPL 12870 Monitoring Locations





Rocglen Coal Mine- Monthly Monitoring Summary

Site Information

EPL No: 12870

EPA Website Link: <http://epa.nsw.gov.au/prpoeoapp/ViewPOEOLicence.aspx?DOCID=40278&SYSUID=1&LICID=12870>

Licensee: Whitehaven Coal Mining Pty Ltd

Licensee Address: Rocglen Coal Mine, Wean Road, GUNNEDAH NSW 2380

EPL Monitoring Points: See Figure 1 below

Sampling Period: September 2021

Obtained Date: 11 October 2021

Publication Date: 19 October 2021

Table 1 - No Pollutant Limits Apply

EPL ID	Pollutant	Units of Measure	Monitoring Frequency	No. of Samples for the Month	Date(s) Sampled	Date(s) Obtained	Min Value	Mean Value	Median Value	Max or Only Value
4	Particulates-Deposited Matter (BD4)	g/m2/month	Continuous	1	13/09/21	23/09/21	-	-	-	1.26
6	Particulates-Deposited Matter (BD6)	g/m2/month	Continuous	1	13/09/21	23/09/21	-	-	-	2.44
10	PM ₁₀	µg/m ³	Every 6 days	5	Various	12/10/21	0.4	10.3	8.5	24.7
11	Conductivity	µS/cm	Special Frequency 1*	-	-	-	-	-	-	-
	Total Organic Carbon	mg/L					-	-	-	-
12	Conductivity	µS/cm	Special Frequency 1*	1	17/09/2021	27/09/2021	-	-	-	389
	Total Organic Carbon	mg/L					-	-	-	5
13	TSS	mg/L	Special Frequency 2**(DDCK)	-	-	-	-	-	-	-
	Conductivity	µS/cm					-	-	-	-
	Oil & Grease	mg/L					-	-	-	-
	pH	pH					-	-	-	-
	Total organic carbon	mg/L					-	-	-	-
14	TSS	mg/L	-	-	-	-	-	-	-	-
	Conductivity	µS/cm					-	-	-	-



Rocgen Coal Mine- Monthly Monitoring Summary

EPL ID	Pollutant	Units of Measure	Monitoring Frequency	No. of Samples for the Month	Date(s) Sampled	Date(s) Obtained	Min Value	Mean Value	Median Value	Max or Only Value
	Oil & Grease	mg/L	Special Frequency 2**(UNDC)				-	-	-	-
	pH	pH					-	-	-	-
	Total organic carbon	mg/L					-	-	-	-
15	TSS	mg/L	Special Frequency 2** (SD7)	-	-	-	-	-	-	-
	Conductivity	µS /cm					-	-	-	-
	Oil & Grease	mg/L					-	-	-	-
	pH	pH					-	-	-	-
	Total organic carbon	mg/L					-	-	-	-

Table 2 - Pollutant Limits Apply

EPL ID	Pollutant	Units of Measure	Monitoring Frequency	No. of Samples for the Month	Date(s) Sampled	Date(s) Obtained	Min Value	Max or Only Value	100%ile Limit	Exceedance (Yes/No)	Comments
11	TSS	mg/L	Special Frequency 1* (LDP11)	-	-	-	-	-	-	-	-
	Oil & Grease	mg/L					-	-	-	-	
	pH	pH					-	-	-	-	
12	TSS	mg/L	Special Frequency 1* (LDP12)	1	17/09/2021	27/09/2021	-	22	50	No	Controlled Discharge
	Oil & Grease	mg/L					-	<5	10	No	
	pH	pH					-	7.7	6.5-8.5	No	

* Special Frequency 1 means the collection of samples as soon as practicable after each discharge commences and in any case not more than 12 hours after each discharge commences.

** Special Frequency 2 means collection of samples quarterly (in the event of flow during the quarter) at a time when there is flow and as soon as practicable after each wet weather discharge from points 11 and 12 commences and in any case not more than 12 hours after each discharge commences.



Roclen Coal Mine- Monthly Monitoring Summary
Table 3 – Monitoring (Quarterly & Yearly – No Limits apply)

EPL ID	Pollutant	Units of Measure	Monitoring Frequency	No. of Samples for the Month	Date Sampled	Date Obtained	Min Value	Mean Value	Median Value	Max Value/Only Value
16	Aluminium	mg/L	Yearly	-		-	-	-	-	-
	Arsenic	mg/L					-	-	-	-
	Bicarbonate	mg/L					-	-	-	-
	Chloride	mg/L					-	-	-	-
	Iron	mg/L					-	-	-	-
	Manganese	mg/L					-	-	-	-
	Sodium	mg/L					-	-	-	-
16	Conductivity	µS/cm	Quarterly	-	-	-	-	-	-	-
	Oil & Grease	mg/L					-	-	-	-
	pH	pH					-	-	-	-
	TOC	mg/L					-	-	-	-
	TSS	mg/L					-	-	-	-



WHITEHAVEN COAL

Rocgen Coal Mine- Monthly Monitoring Summary

Figure 1 – EPL 12870 Monitoring Locations





Rocglen Coal Mine- Monthly Monitoring Summary

Site Information

EPL No: 12870

EPA Website Link: <http://epa.nsw.gov.au/prpoeoapp/ViewPOEOLicence.aspx?DOCID=40278&SYSUID=1&LICID=12870>

Licensee: Whitehaven Coal Mining Pty Ltd

Licensee Address: Rocglen Coal Mine, Wean Road, GUNNEDAH NSW 2380

EPL Monitoring Points: See Figure 1 below

Sampling Period: October 2021

Obtained Date: 15 November 2021

Publication Date: 19 November 2021

Table 1 - No Pollutant Limits Apply

EPL ID	Pollutant	Units of Measure	Monitoring Frequency	No. of Samples for the Month	Date(s) Sampled	Date(s) Obtained	Min Value	Mean Value	Median Value	Max or Only Value
4	Particulates-Deposited Matter (BD4)	g/m2/month	Continuous	1	14/10/21	26/10/21	-	-	-	2.00
6	Particulates-Deposited Matter (BD6)	g/m2/month	Continuous	1	14/10/21	26/10/21	-	-	-	1.57
10	PM ₁₀	µg/m ³	Every 6 days	5	Various	15/11/2021	2.1	5.6	6.7	7.7
11	Conductivity	µS/cm	Special Frequency 1*	2	13/10/2021	22/10/2021	218	369	369	520
	Total Organic Carbon	mg/L			25/10/2021	29/10/2021	2	8.50	8.50	15
12	Conductivity	µS/cm	Special Frequency 1*	-	-	-	-	-	-	-
	Total Organic Carbon	mg/L					-	-	-	-
13	TSS	mg/L	Special Frequency 2**(DDCK)	-	-	-	-	-	-	-
	Conductivity	µS/cm					-	-	-	-
	Oil & Grease	mg/L					-	-	-	-
	pH	pH					-	-	-	-
	Total organic carbon	mg/L					-	-	-	-



Rocgen Coal Mine- Monthly Monitoring Summary

EPL ID	Pollutant	Units of Measure	Monitoring Frequency	No. of Samples for the Month	Date(s) Sampled	Date(s) Obtained	Min Value	Mean Value	Median Value	Max or Only Value
14	TSS	mg/L	Special Frequency 2**(UNDC)	1	13/10/2021	22/10/2021	-	-	-	59
	Conductivity	µS/cm					-	-	-	264
	Oil & Grease	mg/L					-	-	-	<5
	pH	pH					-	-	-	7.15
	Total organic carbon	mg/L					-	-	-	14
15	TSS	mg/L	Special Frequency 2** (SD7)	-	-	-	-	-	-	-
	Conductivity	µS/cm					-	-	-	-
	Oil & Grease	mg/L					-	-	-	-
	pH	pH					-	-	-	-
	Total organic carbon	mg/L					-	-	-	-

Table 2 - Pollutant Limits Apply

EPL ID	Pollutant	Units of Measure	Monitoring Frequency	No. of Samples for the Month	Date(s) Sampled	Date(s) Obtained	Min Value	Max or Only Value	100%ile Limit	Exceedance (Yes/No)	Comments
11	TSS	mg/L	Special Frequency 1* (LDP11)	2	13/10/2021 25/10/2021	22/10/2021 29/10/2021	<5	169	50	No	1 Controlled Discharge and 1 Uncontrolled Discharge
	Oil & Grease	mg/L					<5	<5	10	No	
	pH	pH					6.91	6.89	6.5-8.5	No	
12	TSS	mg/L	Special Frequency 1* (LDP12)	-	-	-	-	-	-	-	-
	Oil & Grease	mg/L					-	-	-	-	
	pH	pH					-	-	-	-	

* Special Frequency 1 means the collection of samples as soon as practicable after each discharge commences and in any case not more than 12 hours after each discharge commences.

** Special Frequency 2 means collection of samples quarterly (in the event of flow during the quarter) at a time when there is flow and as soon as practicable after each wet weather discharge from points 11 and 12 commences and in any case not more than 12 hours after each discharge commences.



Rocgen Coal Mine- Monthly Monitoring Summary

Table 3 – Monitoring (Quarterly & Yearly – No Limits apply)

EPL ID	Pollutant	Units of Measure	Monitoring Frequency	No. of Samples for the Month	Date Sampled	Date Obtained	Min Value	Mean Value	Median Value	Max Value/Only Value
16	Aluminium	mg/L	Yearly	-		-	-	-	-	-
	Arsenic	mg/L					-	-	-	-
	Bicarbonate	mg/L					-	-	-	-
	Chloride	mg/L					-	-	-	-
	Iron	mg/L					-	-	-	-
	Manganese	mg/L					-	-	-	-
	Sodium	mg/L					-	-	-	-
16	Conductivity	µS/cm	Quarterly	-	-	-	-	-	-	-
	Oil & Grease	mg/L					-	-	-	-
	pH	pH					-	-	-	-
	TOC	mg/L					-	-	-	-
	TSS	mg/L					-	-	-	-



WHITEHAVEN COAL

Rocgen Coal Mine- Monthly Monitoring Summary

Figure 1 – EPL 12870 Monitoring Locations





Rocglen Coal Mine- Monthly Monitoring Summary

Site Information

EPL No: 12870

EPA Website Link: <http://epa.nsw.gov.au/prpoeoapp/ViewPOEOLicence.aspx?DOCID=40278&SYSUID=1&LICID=12870>

Licensee: Whitehaven Coal Mining Pty Ltd

Licensee Address: Rocglen Coal Mine, Wean Road, GUNNEDAH NSW 2380

EPL Monitoring Points: See Figure 1 below

Sampling Period: November 2021

Obtained Date: 14 December 2021

Publication Date: 17 December 2021

Table 1 - No Pollutant Limits Apply

EPL ID	Pollutant	Units of Measure	Monitoring Frequency	No. of Samples for the Month	Date(s) Sampled	Date(s) Obtained	Min Value	Mean Value	Median Value	Max or Only Value
4	Particulates-Deposited Matter (BD4)	g/m2/month	Continuous	1	17/11/21	23/11/21	-	-	-	2.70
6	Particulates-Deposited Matter (BD6)	g/m2/month	Continuous	1	17/11/21	23/11/21	-	-	-	1.73
10	PM ₁₀	µg/m3	Every 6 days	5	Various	14/12/2021	2.9	4.8	4.4	7.4
11	Conductivity	µS/cm	Special Frequency 1*	3	8/11/2021	16/11/2021	335	401	370	500
	Total Organic Carbon	mg/L			19/11/2021	30/11/2021	2	5	6	7
12	Conductivity	µS/cm	Special Frequency 1*	1	22/11/2021	25/11/2021	-	-	-	324
	Total Organic Carbon	mg/L					-	-	-	5
13	TSS	mg/L	Special Frequency 2**(DDCK)	2	8/11/2021 22/11/2021	Various	6	38	22	38
	Conductivity	µS/cm					82	116	116	150
	Oil & Grease	mg/L					5	6	5.5	6
	pH	pH					6.76	7.08	7.08	7.4



WHITEHAVEN COAL

Rocgen Coal Mine- Monthly Monitoring Summary

EPL ID	Pollutant	Units of Measure	Monitoring Frequency	No. of Samples for the Month	Date(s) Sampled	Date(s) Obtained	Min Value	Mean Value	Median Value	Max or Only Value
	Total organic carbon	mg/L					17	21	20.5	24
14	TSS	mg/L	Special Frequency 2**(UNDC)	2	8/11/2021 22/11/2021	Various	40	79	78.5	117
	Conductivity	µS/cm					80	143	143	206
	Oil & Grease	mg/L					5	5	5	5
	pH	pH					6.97	7	6.995	7.02
	Total organic carbon	mg/L					16	17	17	18
15	TSS	mg/L	Special Frequency 2** (SD7)	-	-	-	-	-	-	-
	Conductivity	µS /cm					-	-	-	-
	Oil & Grease	mg/L					-	-	-	-
	pH	pH					-	-	-	-
	Total organic carbon	mg/L					-	-	-	-

Table 2 - Pollutant Limits Apply

EPL ID	Pollutant	Units of Measure	Monitoring Frequency	No. of Samples for the Month	Date(s) Sampled	Date(s) Obtained	Min Value	Med	Max	Exceedance (Yes/No)	Comments
11	TSS	mg/L	Special Frequency 1* (LDP11)	3	8/11/2021 19/11/2021 22/11/2021	16/11/2021 30/11/2021 25/11/2021	16	4750	12400	No	1 Controlled and 2 Uncontrolled Discharges
	Oil & Grease	mg/L					<5	<5	<5	No	
	pH	pH					7.94	8.04	8.23	No	
12	TSS	mg/L	Special Frequency 1* (LDP12)	1	22/11/2021	25/11/2021	-	-	68	No	1 Uncontrolled Discharge
	Oil & Grease	mg/L					-	-	<5	No	
	pH	pH					-	-	8.01	No	

Rocgen Coal Mine- Monthly Monitoring Summary

* Special Frequency 1 means the collection of samples as soon as practicable after each discharge commences and in any case not more than 12 hours after each discharge commences.

** Special Frequency 2 means collection of samples quarterly (in the event of flow during the quarter) at a time when there is flow and as soon as practicable after each wet weather discharge from points 11 and 12 commences and in any case not more than 12 hours after each discharge commences.

Table 3 – Monitoring (Quarterly & Yearly – No Limits apply)

EPL ID	Pollutant	Units of Measure	Monitoring Frequency	No. of Samples for the Month	Date Sampled	Date Obtained	Min Value	Mean Value	Median Value	Max Value/Only Value
16	Aluminium	mg/L	Yearly	-	-	-	-	-	-	-
	Arsenic	mg/L					-	-	-	-
	Bicarbonate	mg/L					-	-	-	-
	Chloride	mg/L					-	-	-	-
	Iron	mg/L					-	-	-	-
	Manganese	mg/L					-	-	-	-
	Sodium	mg/L					-	-	-	-
16	Conductivity	µS/cm	Quarterly	-	-	-	-	-	-	-
	Oil & Grease	mg/L					-	-	-	-
	pH	pH					-	-	-	-
	TOC	mg/L					-	-	-	-
	TSS	mg/L					-	-	-	-



WHITEHAVEN COAL

Rocgen Coal Mine- Monthly Monitoring Summary

Figure 1 – EPL 12870 Monitoring Locations





Rocglen Coal Mine- Monthly Monitoring Summary

Site Information

EPL No: 12870

EPA Website Link: <http://epa.nsw.gov.au/prpoeoapp/ViewPOEOLicence.aspx?DOCID=40278&SYSUID=1&LICID=12870>

Licensee: Whitehaven Coal Mining Pty Ltd

Licensee Address: Rocglen Coal Mine, Wean Road, GUNNEDAH NSW 2380

EPL Monitoring Points: See Figure 1 below

Sampling Period: December 2021

Obtained Date: 18th January 2022

Publication Date: 18th January 2022

Table 1 - No Pollutant Limits Apply

EPL ID	Pollutant	Units of Measure	Monitoring Frequency	No. of Samples for the Month	Date(s) Sampled	Date(s) Obtained	Min Value	Mean Value	Median Value	Max or Only Value
4	Particulates-Deposited Matter (BD4)	g/m2/month	Continuous	1	14/12/2021	5/01/2022	-	-	-	2.60
6	Particulates-Deposited Matter (BD6)	g/m2/month	Continuous	1	14/12/2021	5/01/2022	-	-	-	1.20
10	PM ₁₀	µg/m ³	Every 6 days	5	Various	18/01/2022	1.9	5.4	4.7	10.8
11	Conductivity	µS/cm	Special Frequency 1*	1	8/12/2021	20/12/2021	-	-	-	356
	Total Organic Carbon	mg/L					-	-	-	4
12	Conductivity	µS/cm	Special Frequency 1*	1	8/12/2021	20/12/2021	-	-	-	296
	Total Organic Carbon	mg/L					-	-	-	9
13	TSS	mg/L	Special Frequency 2**(DDCK)	1	8/12/2021	20/12/2021	-	-	-	44
	Conductivity	µS/cm					-	-	-	131
	Oil & Grease	mg/L					-	-	-	<5
	pH	pH					-	-	-	7.46
	Total organic carbon	mg/L					-	-	-	20



WHITEHAVEN COAL

Rocgen Coal Mine- Monthly Monitoring Summary

EPL ID	Pollutant	Units of Measure	Monitoring Frequency	No. of Samples for the Month	Date(s) Sampled	Date(s) Obtained	Min Value	Mean Value	Median Value	Max or Only Value
14	TSS	mg/L	Special Frequency 2**(UNDC)	1	8/12/2021	20/12/2021	-	-	-	90
	Conductivity	µS/cm					-	-	-	268
	Oil & Grease	mg/L					-	-	-	<5
	pH	pH					-	-	-	7.51
	Total organic carbon	mg/L					-	-	-	23
15	TSS	mg/L	Special Frequency 2**(SD7)	1	2/12/2021	13/12/2021	-	-	-	32
	Conductivity	µS/cm					-	-	-	102
	Oil & Grease	mg/L					-	-	-	<5
	pH	pH					-	-	-	7.19
	Total organic carbon	mg/L					-	-	-	16

Table 2 - Pollutant Limits Apply

EPL ID	Pollutant	Units of Measure	Monitoring Frequency	No. of Samples for the Month	Date(s) Sampled	Date(s) Obtained	Min Value	Med	Max	Exceedance (Yes/No)	Comments
11	TSS	mg/L	Special Frequency 1* (LDP11)	1	8/12/2021	20/12/2021	-	-	5090	No	Uncontrolled Discharge
	Oil & Grease	mg/L					-	-	<5	No	
	pH	pH					-	-	7.78	No	
12	TSS	mg/L	Special Frequency 1* (LDP12)	1	8/12/2021	20/12/2021	-	-	55	No	Uncontrolled Discharge
	Oil & Grease	mg/L					-	-	<5	No	
	pH	pH					-	-	7.32	No	

Rocgen Coal Mine- Monthly Monitoring Summary

* Special Frequency 1 means the collection of samples as soon as practicable after each discharge commences and, in any case, not more than 12 hours after each discharge commences.

** Special Frequency 2 means collection of samples quarterly (in the event of flow during the quarter) at a time when there is flow and as soon as practicable after each wet weather discharge from points 11 and 12 commences and in any case not more than 12 hours after each discharge commences.

Table 3 – Monitoring (Quarterly & Yearly – No Limits apply)

EPL ID	Pollutant	Units of Measure	Monitoring Frequency	No. of Samples for the Month	Date Sampled	Date Obtained	Min Value	Mean Value	Median Value	Max Value/Only Value
16	Aluminium	mg/L	Yearly	-	-	-	-	-	-	-
	Arsenic	mg/L					-	-	-	-
	Bicarbonate	mg/L					-	-	-	-
	Chloride	mg/L					-	-	-	-
	Iron	mg/L					-	-	-	-
	Manganese	mg/L					-	-	-	-
	Sodium	mg/L					-	-	-	-
16	Conductivity	µS/cm	Quarterly	1	2/12/2021	13/12/2021	-	-	-	392
	Oil & Grease	mg/L					-	-	-	<5
	pH	pH					-	-	-	8.06
	TOC	mg/L					-	-	-	4
	TSS	mg/L					-	-	-	164



WHITEHAVEN COAL

Rocgen Coal Mine- Monthly Monitoring Summary

Figure 1 – EPL 12870 Monitoring Locations

