

## Rocglen Coal Mine- Monthly Monitoring Summary

### Site Information

**EPL No:** 12870

**EPA Website Link:** <http://epa.nsw.gov.au/prpoeoapp/ViewPOEOLicence.aspx?DOCID=40278&SYSUID=1&LICID=12870>

**Licensee:** Whitehaven Coal Mining Pty Ltd

**Licensee Address:** Rocglen Coal Mine, Wean Road, GUNNEDAH NSW 2380

**EPL Monitoring Points:** See Figure 1 below

**Sampling Period:** January 2024

**Obtained Date:** 21<sup>st</sup> February 2024

**Publication Date:** 22<sup>nd</sup> February 2024

**Table 1 - No Pollutant Limits Apply**

EPL ID	Pollutant	Units of Measure	Monitoring Frequency	No. of Samples for the Month	Date(s) Sampled	Date(s) Obtained	Min Value	Mean Value	Median Value	Max or Only Value
4	Particulates-Deposited Matter (BD4)	g/m <sup>2</sup> /month	Continuous	1	12/01/2024	30/01/2024	-	-	-	1.6
6	Particulates-Deposited Matter (BD6)	g/m <sup>2</sup> /month	Continuous	1	12/01/2024	30/01/2024	-	-	-	1.0
10	PM <sub>10</sub>	µg/m <sup>3</sup>	Every 6 days	5	6/01/2024 12/01/2024 18/01/2024 24/01/2024 30/01/2024	21/02/2024	3.4	7	5.7	11.1
11	Conductivity	µS/cm	Special Frequency 1*	0	-	-	-	-	-	-
	Total organic carbon	mg/L					-	-	-	-
12	Conductivity	µS/cm	Special Frequency 1*	0	-	-	-	-	-	-
	Total organic carbon	mg/L					-	-	-	-
13	TSS	mg/L	Special Frequency 2**(DDCK)	0	-	-	-	-	-	-
	Conductivity	µS/cm					-	-	-	-
	Oil & Grease	mg/L					-	-	-	-
	pH	pH					-	-	-	-



# WHITEHAVEN COAL

## Rocgen Coal Mine- Monthly Monitoring Summary

EPL ID	Pollutant	Units of Measure	Monitoring Frequency	No. of Samples for the Month	Date(s) Sampled	Date(s) Obtained	Min Value	Mean Value	Median Value	Max or Only Value
	Total organic carbon	mg/L					-	-	-	-
14	TSS	mg/L	Special Frequency 2**(UNDC)	0	-	-	-	-	-	-
	Conductivity	µS/cm					-	-	-	-
	Oil & Grease	mg/L					-	-	-	-
	pH	pH					-	-	-	-
	Total organic carbon	mg/L					-	-	-	-
15	TSS	mg/L	Special Frequency 2** (SD7)	0	-	-	-	-	-	-
	Conductivity	µS /cm					-	-	-	-
	Oil & Grease	mg/L					-	-	-	-
	pH	pH					-	-	-	-
	Total organic carbon	mg/L					-	-	-	-

Table 2 - Pollutant Limits Apply

EPL ID	Pollutant	Units of Measure	Monitoring Frequency	No. of Samples for the Month	Date(s) Sampled	Date(s) Obtained	Min Value	Max or Only Value	100%ile Limit	Exceedance (Yes/No)	Comments
11	TSS	mg/L	Special Frequency 1*	0	-	-	-	-	-	No	-
	Oil & Grease	mg/L					-	-	-	No	
	pH	pH					-	-	-	No	
12	TSS	mg/L	Special Frequency 1*	0	-	-	-	-	-	No	-
	Oil & Grease	mg/L					-	-	-	No	
	pH	pH					-	-	-	No	

\* Special Frequency 1 means the collection of samples as soon as practicable after each discharge commences and in any case not more than 12 hours after each discharge commences.

\*\* Special Frequency 2 means collection of samples quarterly (in the event of flow during the quarter) at a time when there is flow and as soon as practicable after each wet weather discharge from points 11 and 12 commences and in any case not more than 12 hours after each discharge commences.



## Rocgen Coal Mine- Monthly Monitoring Summary

Table 3 – Monitoring (Quarterly & Yearly – No Limits apply)

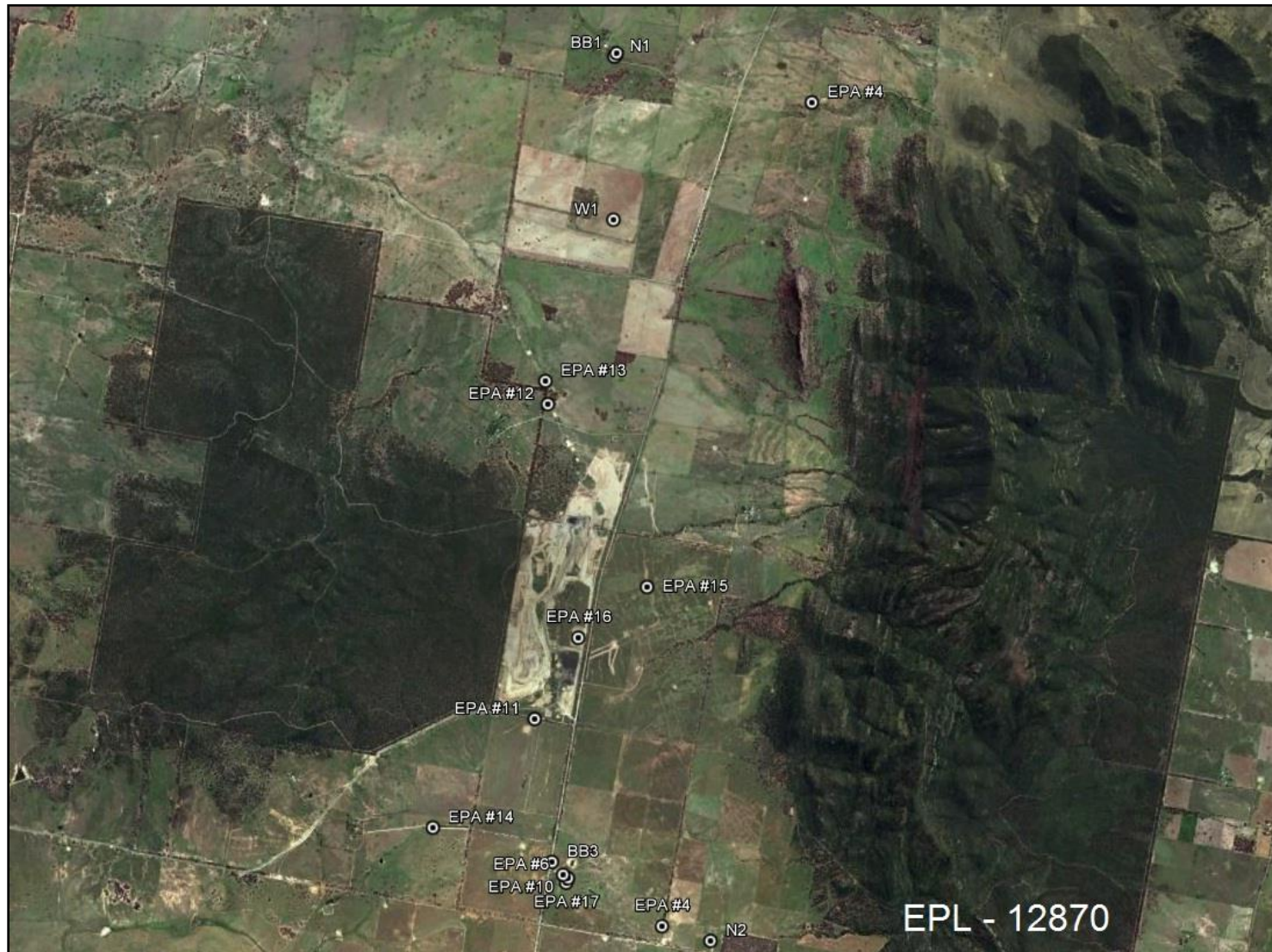
EPL ID	Pollutant	Units of Measure	Monitoring Frequency	No. of Samples for the Month	Date Sampled	Date Obtained	Min Value	Mean Value	Median Value	Max Value/Only Value
16	Aluminium	mg/L	Yearly	0	-	-	-	-	-	-
	Arsenic	mg/L					-	-	-	-
	Bicarbonate	mg/L					-	-	-	-
	Chloride	mg/L					-	-	-	-
	Iron	mg/L					-	-	-	-
	Manganese	mg/L					-	-	-	-
	Sodium	mg/L					-	-	-	-
16	Conductivity	µS/cm	Quarterly	0	-	-	-	-	-	-
	Oil & Grease	mg/L					-	-	-	-
	pH	pH					-	-	-	-
	TOC	mg/L					-	-	-	-
	TSS	mg/L					-	-	-	-



# WHITEHAVEN COAL

## Rocgen Coal Mine- Monthly Monitoring Summary

Figure 1 – EPL 12870 Monitoring Locations



## Rocglen Coal Mine- Monthly Monitoring Summary

### Site Information

**EPL No:** 12870

**EPA Website Link:** <http://epa.nsw.gov.au/prpoeoapp/ViewPOEOLicence.aspx?DOCID=40278&SYSUID=1&LICID=12870>

**Licensee:** Whitehaven Coal Mining Pty Ltd

**Licensee Address:** Rocglen Coal Mine, Wean Road, GUNNEDAH NSW 2380

**EPL Monitoring Points:** See Figure 1 below

**Sampling Period:** February 2024

**Obtained Date:** 17<sup>th</sup> March 2024

**Publication Date:** 27<sup>th</sup> March 2024

**Table 1 - No Pollutant Limits Apply**

EPL ID	Pollutant	Units of Measure	Monitoring Frequency	No. of Samples for the Month	Date(s) Sampled	Date(s) Obtained	Min Value	Mean Value	Median Value	Max or Only Value
4	Particulates-Deposited Matter (BD4)	g/m <sup>2</sup> /month	Continuous	1	12/02/2024	17/03/2024	-	-	-	1.6
6	Particulates-Deposited Matter (BD6)	g/m <sup>2</sup> /month	Continuous	1	12/02/2024	17/03/2024	-	-	-	1.0
10	PM <sub>10</sub>	µg/m <sup>3</sup>	Every 6 days	5	5/02/2024 11/02/2024 17/02/2024 23/02/2024 29/02/2024	11/04/2024	3.6	7.5	6.3	13.1
11	Conductivity	µS/cm	Special Frequency 1*	0	-	-	-	-	-	-
	Total organic carbon	mg/L					-	-	-	-
12	Conductivity	µS/cm	Special Frequency 1*	0	-	-	-	-	-	-
	Total organic carbon	mg/L					-	-	-	-
13	TSS	mg/L	Special Frequency 2**(DDCK)	0	-	-	-	-	-	-
	Conductivity	µS/cm					-	-	-	-
	Oil & Grease	mg/L					-	-	-	-



# WHITEHAVEN COAL

## Rocgen Coal Mine- Monthly Monitoring Summary

EPL ID	Pollutant	Units of Measure	Monitoring Frequency	No. of Samples for the Month	Date(s) Sampled	Date(s) Obtained	Min Value	Mean Value	Median Value	Max or Only Value
	pH	pH					-	-	-	-
	Total organic carbon	mg/L					-	-	-	-
14	TSS	mg/L	Special Frequency 2**(UNDC)	0	-	-	-	-	-	-
	Conductivity	µS/cm					-	-	-	-
	Oil & Grease	mg/L					-	-	-	-
	pH	pH					-	-	-	-
	Total organic carbon	mg/L					-	-	-	-
15	TSS	mg/L	Special Frequency 2** (SD7)	0	-	-	-	-	-	-
	Conductivity	µS /cm					-	-	-	-
	Oil & Grease	mg/L					-	-	-	-
	pH	pH					-	-	-	-
	Total organic carbon	mg/L					-	-	-	-

Table 2 - Pollutant Limits Apply

EPL ID	Pollutant	Units of Measure	Monitoring Frequency	No. of Samples for the Month	Date(s) Sampled	Date(s) Obtained	Min Value	Max or Only Value	100%ile Limit	Exceedance (Yes/No)	Comments
11	TSS	mg/L	Special Frequency 1*	0	-	-	-	-	-	No	-
	Oil & Grease	mg/L					-	-	-	No	
	pH	pH					-	-	-	No	
12	TSS	mg/L	Special Frequency 1*	0	-	-	-	-	-	No	-
	Oil & Grease	mg/L					-	-	-	No	
	pH	pH					-	-	-	No	

\* Special Frequency 1 means the collection of samples as soon as practicable after each discharge commences and in any case not more than 12 hours after each discharge commences.



# WHITEHAVEN COAL

## Rocgen Coal Mine- Monthly Monitoring Summary

\*\* Special Frequency 2 means collection of samples quarterly (in the event of flow during the quarter) at a time when there is flow and as soon as practicable after each wet weather discharge from points 11 and 12 commences and in any case not more than 12 hours after each discharge commences.

**Table 3 – Monitoring (Quarterly & Yearly – No Limits apply)**

EPL ID	Pollutant	Units of Measure	Monitoring Frequency	No. of Samples for the Month	Date Sampled	Date Obtained	Min Value	Mean Value	Median Value	Max Value/Only Value
16	Aluminium	mg/L	Yearly	0	-	-	-	-	-	-
	Arsenic	mg/L					-	-	-	-
	Bicarbonate	mg/L					-	-	-	-
	Chloride	mg/L					-	-	-	-
	Iron	mg/L					-	-	-	-
	Manganese	mg/L					-	-	-	-
	Sodium	mg/L					-	-	-	-
16	Conductivity	µS/cm	Quarterly	1	15/02/2024	22/02/2024	-	-	-	836
	Oil & Grease	mg/L					-	-	-	<5
	pH	pH					-	-	-	8.92
	TOC	mg/L					-	-	-	5
	TSS	mg/L					-	-	-	91



# WHITEHAVEN COAL

## Rocgen Coal Mine- Monthly Monitoring Summary

Figure 1 – EPL 12870 Monitoring Locations







## Rocglen Coal Mine- Monthly Monitoring Summary

### Site Information

**EPL No:** 12870

**EPA Website Link:** <http://epa.nsw.gov.au/prpoeoapp/ViewPOEOLicence.aspx?DOCID=40278&SYSUID=1&LICID=12870>

**Licensee:** Whitehaven Coal Mining Pty Ltd

**Licensee Address:** Rocglen Coal Mine, Wean Road, GUNNEDAH NSW 2380

**EPL Monitoring Points:** See Figure 1 below

**Sampling Period:** March 2024

**Obtained Date:** 17<sup>th</sup> April 2024

**Publication Date:** 18<sup>th</sup> April 2024

**Table 1 - No Pollutant Limits Apply**

EPL ID	Pollutant	Units of Measure	Monitoring Frequency	No. of Samples for the Month	Date(s) Sampled	Date(s) Obtained	Min Value	Mean Value	Median Value	Max or Only Value
4	Particulates-Deposited Matter (BD4)	g/m <sup>2</sup> /month	Continuous	1	14/03/2024	19/03/2024	-	-	-	1.1
6	Particulates-Deposited Matter (BD6)	g/m <sup>2</sup> /month	Continuous	1	14/03/2024	19/03/2024	-	-	-	1.0
10	PM <sub>10</sub>	µg/m <sup>3</sup>	Every 6 days	5	6/03/2024 12/03/2024 18/03/2024 24/03/2024 30/03/2024	13/04/2024	5.5	8.48	8.2	13.1
11	Conductivity	µS/cm	Special Frequency 1*	0	-	-	-	-	-	-
	Total organic carbon	mg/L					-	-	-	-
12	Conductivity	µS/cm	Special Frequency 1*	0	-	-	-	-	-	-
	Total organic carbon	mg/L					-	-	-	-
13	TSS	mg/L	Special Frequency 2**(DDCK)	0	-	-	-	-	-	-
	Conductivity	µS/cm					-	-	-	-
	Oil & Grease	mg/L					-	-	-	-
	pH	pH					-	-	-	-



# WHITEHAVEN COAL

## Rocgen Coal Mine- Monthly Monitoring Summary

EPL ID	Pollutant	Units of Measure	Monitoring Frequency	No. of Samples for the Month	Date(s) Sampled	Date(s) Obtained	Min Value	Mean Value	Median Value	Max or Only Value
	Total organic carbon	mg/L					-	-	-	-
14	TSS	mg/L	Special Frequency 2**(UNDC)	0	-	-	-	-	-	-
	Conductivity	µS/cm					-	-	-	-
	Oil & Grease	mg/L					-	-	-	-
	pH	pH					-	-	-	-
	Total organic carbon	mg/L					-	-	-	-
15	TSS	mg/L	Special Frequency 2** (SD7)	0	-	-	-	-	-	-
	Conductivity	µS /cm					-	-	-	-
	Oil & Grease	mg/L					-	-	-	-
	pH	pH					-	-	-	-
	Total organic carbon	mg/L					-	-	-	-

Table 2 - Pollutant Limits Apply

EPL ID	Pollutant	Units of Measure	Monitoring Frequency	No. of Samples for the Month	Date(s) Sampled	Date(s) Obtained	Min Value	Max or Only Value	100%ile Limit	Exceedance (Yes/No)	Comments
11	TSS	mg/L	Special Frequency 1*	0	-	-	-	-	-	No	-
	Oil & Grease	mg/L					-	-	-	No	
	pH	pH					-	-	-	No	
12	TSS	mg/L	Special Frequency 1*	0	-	-	-	-	-	No	-
	Oil & Grease	mg/L					-	-	-	No	
	pH	pH					-	-	-	No	

\* Special Frequency 1 means the collection of samples as soon as practicable after each discharge commences and in any case not more than 12 hours after each discharge commences.

\*\* Special Frequency 2 means collection of samples quarterly (in the event of flow during the quarter) at a time when there is flow and as soon as practicable after each wet weather discharge from points 11 and 12 commences and in any case not more than 12 hours after each discharge commences.

**Rocgen Coal Mine- Monthly Monitoring Summary**
**Table 3 – Monitoring (Quarterly & Yearly – No Limits apply)**

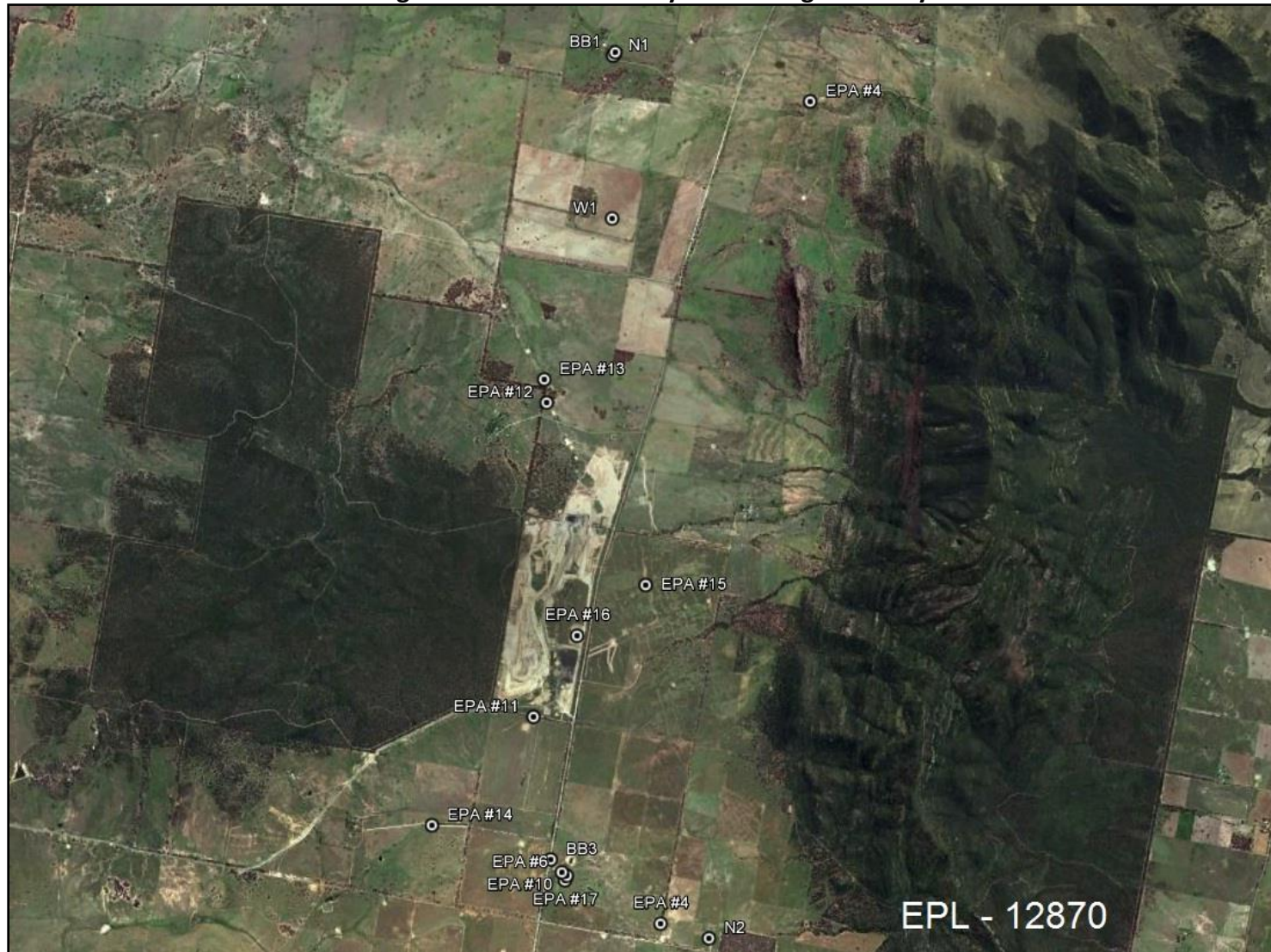
EPL ID	Pollutant	Units of Measure	Monitoring Frequency	No. of Samples for the Month	Date Sampled	Date Obtained	Min Value	Mean Value	Median Value	Max Value/Only Value
16	Aluminium	mg/L	Yearly	0	-	-	-	-	-	-
	Arsenic	mg/L					-	-	-	-
	Bicarbonate	mg/L					-	-	-	-
	Chloride	mg/L					-	-	-	-
	Iron	mg/L					-	-	-	-
	Manganese	mg/L					-	-	-	-
	Sodium	mg/L					-	-	-	-
16	Conductivity	µS/cm	Quarterly	0			-	-	-	-
	Oil & Grease	mg/L					-	-	-	-
	pH	pH					-	-	-	-
	TOC	mg/L					-	-	-	-
	TSS	mg/L					-	-	-	-

**Figure 1 – EPL 12870 Monitoring Locations**



# WHITEHAVEN COAL

## Rocgen Coal Mine- Monthly Monitoring Summary





## Rocglen Coal Mine- Monthly Monitoring Summary

### Site Information

EPL No: 12870

EPA Website Link: <http://epa.nsw.gov.au/prpoeoapp/ViewPOEOLicence.aspx?DOCID=40278&SYSUID=1&LICID=12870>

Licensee: Whitehaven Coal Mining Pty Ltd

Licensee Address: Rocglen Coal Mine, Wean Road, GUNNEDAH NSW 2380

EPL Monitoring Points: See Figure 1 below

Sampling Period: April 2024

Obtained Date: 14<sup>th</sup> May 2024

Publication Date: 21<sup>st</sup> May 2024

Table 1 - No Pollutant Limits Apply

EPL ID	Pollutant	Units of Measure	Monitoring Frequency	No. of Samples for the Month	Date(s) Sampled	Date(s) Obtained	Min Value	Mean Value	Median Value	Max or Only Value
4	Particulates-Deposited Matter (BD4)	g/m <sup>2</sup> /month	Continuous	1	11/04/2024	22/04/2024	-	-	-	0.5
6	Particulates-Deposited Matter (BD6)	g/m <sup>2</sup> /month	Continuous	1	11/04/2024	22/04/2024	-	-	-	0.5
10	PM <sub>10</sub>	µg/m <sup>3</sup>	Every 6 days	5	8/04/2024 11/04/2024 17/04/2024 23/04/2024 29/04/2024	14/05/2024	3.7	7.22	6.1	12.7
11	Conductivity	µS/cm	Special Frequency 1*	0	-	-	-	-	-	-
	Total organic carbon	mg/L					-	-	-	-
12	Conductivity	µS/cm	Special Frequency 1*	0	-	-	-	-	-	-
	Total organic carbon	mg/L					-	-	-	-
13	TSS	mg/L	Special Frequency 2**(DDCK)	0	-	-	-	-	-	-
	Conductivity	µS/cm					-	-	-	-
	Oil & Grease	mg/L					-	-	-	-
	pH	pH					-	-	-	-



# WHITEHAVEN COAL

## Rocgen Coal Mine- Monthly Monitoring Summary

EPL ID	Pollutant	Units of Measure	Monitoring Frequency	No. of Samples for the Month	Date(s) Sampled	Date(s) Obtained	Min Value	Mean Value	Median Value	Max or Only Value
	Total organic carbon	mg/L					-	-	-	-
14	TSS	mg/L	Special Frequency 2**(UNDC)	0	-	-	-	-	-	-
	Conductivity	µS/cm					-	-	-	-
	Oil & Grease	mg/L					-	-	-	-
	pH	pH					-	-	-	-
	Total organic carbon	mg/L					-	-	-	-
15	TSS	mg/L	Special Frequency 2** (SD7)	0	-	-	-	-	-	-
	Conductivity	µS /cm					-	-	-	-
	Oil & Grease	mg/L					-	-	-	-
	pH	pH					-	-	-	-
	Total organic carbon	mg/L					-	-	-	-

Table 2 - Pollutant Limits Apply

EPL ID	Pollutant	Units of Measure	Monitoring Frequency	No. of Samples for the Month	Date(s) Sampled	Date(s) Obtained	Min Value	Max or Only Value	100%ile Limit	Exceedance (Yes/No)	Comments
11	TSS	mg/L	Special Frequency 1*	0	-	-	-	-	-	No	-
	Oil & Grease	mg/L					-	-	-	No	
	pH	pH					-	-	-	No	
12	TSS	mg/L	Special Frequency 1*	0	-	-	-	-	-	No	-
	Oil & Grease	mg/L					-	-	-	No	
	pH	pH					-	-	-	No	

\* Special Frequency 1 means the collection of samples as soon as practicable after each discharge commences and in any case not more than 12 hours after each discharge commences.

\*\* Special Frequency 2 means collection of samples quarterly (in the event of flow during the quarter) at a time when there is flow and as soon as practicable after each wet weather discharge from points 11 and 12 commences and in any case not more than 12 hours after each discharge commences.

**Rocgen Coal Mine- Monthly Monitoring Summary**
**Table 3 – Monitoring (Quarterly & Yearly – No Limits apply)**

EPL ID	Pollutant	Units of Measure	Monitoring Frequency	No. of Samples for the Month	Date Sampled	Date Obtained	Min Value	Mean Value	Median Value	Max Value/Only Value
16	Aluminium	mg/L	Yearly	0	-	-	-	-	-	-
	Arsenic	mg/L					-	-	-	-
	Bicarbonate	mg/L					-	-	-	-
	Chloride	mg/L					-	-	-	-
	Iron	mg/L					-	-	-	-
	Manganese	mg/L					-	-	-	-
	Sodium	mg/L					-	-	-	-
16	Conductivity	µS/cm	Quarterly	0			-	-	-	-
	Oil & Grease	mg/L					-	-	-	-
	pH	pH					-	-	-	-
	TOC	mg/L					-	-	-	-
	TSS	mg/L					-	-	-	-

**Figure 1 – EPL 12870 Monitoring Locations**



# WHITEHAVEN COAL

## Rocgen Coal Mine- Monthly Monitoring Summary







## Rocglen Coal Mine- Monthly Monitoring Summary

### Site Information

EPL No: 12870

EPA Website Link: <http://epa.nsw.gov.au/prpoeoapp/ViewPOEOLicence.aspx?DOCID=40278&SYSUID=1&LICID=12870>

Licensee: Whitehaven Coal Mining Pty Ltd

Licensee Address: Rocglen Coal Mine, Wean Road, GUNNEDAH NSW 2380

EPL Monitoring Points: See Figure 1 below

Sampling Period: May 2024

Obtained Date: 11<sup>th</sup> June 2024

Publication Date: 21<sup>st</sup> June 2024

Table 1 - No Pollutant Limits Apply

EPL ID	Pollutant	Units of Measure	Monitoring Frequency	No. of Samples for the Month	Date(s) Sampled	Date(s) Obtained	Min Value	Mean Value	Median Value	Max or Only Value
4	Particulates-Deposited Matter (BD4)	g/m <sup>2</sup> /month	Continuous	1	10/05/2024	30/05/2024	-	-	-	1.2
6	Particulates-Deposited Matter (BD6)	g/m <sup>2</sup> /month	Continuous	1	10/05/2024	30/05/2024	-	-	-	0.3
10	PM <sub>10</sub>	µg/m <sup>3</sup>	Every 6 days	5	5/05/2024 09/05/2024 17/05/2024 23/05/2024 29/05/2024	11/06/2024	1.4	8.42	8.7	15.5
11	Conductivity	µS/cm	Special Frequency 1*	0	-	-	-	-	-	-
	Total organic carbon	mg/L					-	-	-	-
12	Conductivity	µS/cm	Special Frequency 1*	0	-	-	-	-	-	-
	Total organic carbon	mg/L					-	-	-	-
13	TSS	mg/L	Special Frequency 2**(DDCK)	0	-	-	-	-	-	-
	Conductivity	µS/cm					-	-	-	-
	Oil & Grease	mg/L					-	-	-	-
	pH	pH					-	-	-	-



# WHITEHAVEN COAL

## Rocgen Coal Mine- Monthly Monitoring Summary

EPL ID	Pollutant	Units of Measure	Monitoring Frequency	No. of Samples for the Month	Date(s) Sampled	Date(s) Obtained	Min Value	Mean Value	Median Value	Max or Only Value
	Total organic carbon	mg/L					-	-	-	-
14	TSS	mg/L	Special Frequency 2**(UNDC)	0	-	-	-	-	-	-
	Conductivity	µS/cm					-	-	-	-
	Oil & Grease	mg/L					-	-	-	-
	pH	pH					-	-	-	-
	Total organic carbon	mg/L					-	-	-	-
15	TSS	mg/L	Special Frequency 2** (SD7)	1	28/05/24	05/06/24	-	-	-	34
	Conductivity	µS/cm					-	-	-	444
	Oil & Grease	mg/L					-	-	-	<5
	pH	pH					-	-	-	7.7
	Total organic carbon	mg/L					-	-	-	20

Table 2 - Pollutant Limits Apply

EPL ID	Pollutant	Units of Measure	Monitoring Frequency	No. of Samples for the Month	Date(s) Sampled	Date(s) Obtained	Min Value	Max or Only Value	100%ile Limit	Exceedance (Yes/No)	Comments
11	TSS	mg/L	Special Frequency 1*	0	-	-	-	-	-	No	-
	Oil & Grease	mg/L					-	-	-	No	
	pH	pH					-	-	-	No	
12	TSS	mg/L	Special Frequency 1*	0	-	-	-	-	-	No	-
	Oil & Grease	mg/L					-	-	-	No	
	pH	pH					-	-	-	No	

\* Special Frequency 1 means the collection of samples as soon as practicable after each discharge commences and in any case not more than 12 hours after each discharge commences.

\*\* Special Frequency 2 means collection of samples quarterly (in the event of flow during the quarter) at a time when there is flow and as soon as practicable after each wet weather discharge from points 11 and 12 commences and in any case not more than 12 hours after each discharge commences.



## Rocgen Coal Mine- Monthly Monitoring Summary

Table 3 – Monitoring (Quarterly & Yearly – No Limits apply)

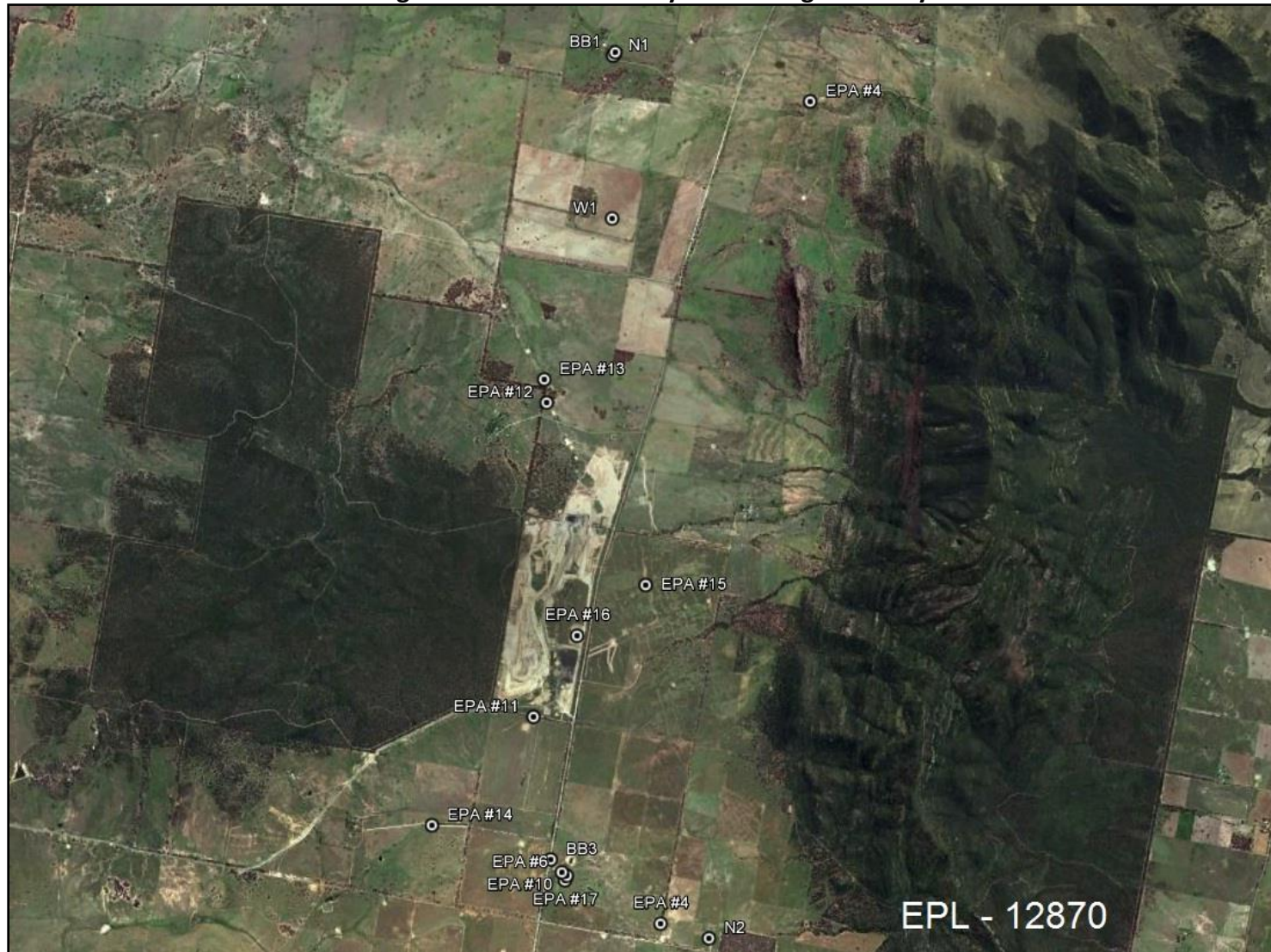
EPL ID	Pollutant	Units of Measure	Monitoring Frequency	No. of Samples for the Month	Date Sampled	Date Obtained	Min Value	Mean Value	Median Value	Max Value/Only Value
16	Aluminium	mg/L	Yearly (Void)	0	-	-	-	-	-	-
	Arsenic	mg/L					-	-	-	-
	Bicarbonate	mg/L					-	-	-	-
	Chloride	mg/L					-	-	-	-
	Iron	mg/L					-	-	-	-
	Manganese	mg/L					-	-	-	-
	Sodium	mg/L					-	-	-	-
16	Conductivity	µS/cm	Quarterly (Void)	1	28/05/24	05/06/24	-	-	-	954
	Oil & Grease	mg/L					-	-	-	<5
	pH	pH					-	-	-	8.98
	TOC	mg/L					-	-	-	5
	TSS	mg/L					-	-	-	53

Figure 1 – EPL 12870 Monitoring Locations



# WHITEHAVEN COAL

## Rocgen Coal Mine- Monthly Monitoring Summary





## Rocglen Coal Mine- Monthly Monitoring Summary

### Site Information

**EPL No:** 12870

**EPA Website Link:** <http://epa.nsw.gov.au/prpoeoapp/ViewPOEOLicence.aspx?DOCID=40278&SYSUID=1&LICID=12870>

**Licensee:** Whitehaven Coal Mining Pty Ltd

**Licensee Address:** Rocglen Coal Mine, Wean Road, GUNNEDAH NSW 2380

**EPL Monitoring Points:** See Figure 1 below

**Sampling Period:** June 2024

**Obtained Date:** 11<sup>th</sup> June 2024

**Publication Date:** 25<sup>th</sup> June 2024

**Table 1 - No Pollutant Limits Apply**

EPL ID	Pollutant	Units of Measure	Monitoring Frequency	No. of Samples for the Month	Date(s) Sampled	Date(s) Obtained	Min Value	Mean Value	Median Value	Max or Only Value
4	Particulates-Deposited Matter (BD4)	g/m <sup>2</sup> /month	Continuous	0	11/06/24	26/06/2024	-	-	-	0.9
6	Particulates-Deposited Matter (BD6)	g/m <sup>2</sup> /month	Continuous	0	11/06/2024	26/06/2024	-	-	-	0.2
10	PM <sub>10</sub>	µg/m <sup>3</sup>	Every 6 days	5	04/06/2024 10/06/2024 16/06/2024 22/06/2024 28/06/2024	11/06/2024	2.8	4.08	3.9	6.1
11	Conductivity	µS/cm	Special Frequency 1*	1	01/06/2024	01/06/2024	-	-	-	402
	Total organic carbon	mg/L					-	-	-	7
12	Conductivity	µS/cm	Special Frequency 1*	0	-	-	-	-	-	-
	Total organic carbon	mg/L					-	-	-	-
13	TSS	mg/L	Special Frequency 2**(DDCK)	0	-	-	-	-	-	-
	Conductivity	µS/cm					-	-	-	-
	Oil & Grease	mg/L					-	-	-	-
	pH	pH					-	-	-	-
	Total organic carbon	mg/L					-	-	-	-



# WHITEHAVEN COAL

## Rocgen Coal Mine- Monthly Monitoring Summary

EPL ID	Pollutant	Units of Measure	Monitoring Frequency	No. of Samples for the Month	Date(s) Sampled	Date(s) Obtained	Min Value	Mean Value	Median Value	Max or Only Value
14	TSS	mg/L	Special Frequency 2**(UNDC)	0	-	-	-	-	-	-
	Conductivity	µS/cm					-	-	-	-
	Oil & Grease	mg/L					-	-	-	-
	pH	pH					-	-	-	-
	Total organic carbon	mg/L					-	-	-	-
15	TSS	mg/L	Special Frequency 2**(SD7)	0			-	-	-	-
	Conductivity	µS /cm					-	-	-	-
	Oil & Grease	mg/L					-	-	-	-
	pH	pH					-	-	-	-
	Total organic carbon	mg/L					-	-	-	-

Table 2 - Pollutant Limits Apply

EPL ID	Pollutant	Units of Measure	Monitoring Frequency	No. of Samples for the Month	Date(s) Sampled	Date(s) Obtained	Min Value	Max or Only Value	100%ile Limit	Exceedance (Yes/No)	Comments
11	TSS	mg/L	Special Frequency 1*	1	01/06/2024	26/06/2024	-	518	50	No	Result of >56.8mm rainfall. No limit on TSS
	Oil & Grease	mg/L					-	< 5	10	No	
	pH	pH					-	7.44	6.5-8.5	No	
12	TSS	mg/L	Special Frequency 1*	0	-	-	-	-	-	No	-
	Oil & Grease	mg/L					-	-	-	No	
	pH	pH					-	-	-	No	

\* Special Frequency 1 means the collection of samples as soon as practicable after each discharge commences and, in any case, not more than 12 hours after each discharge commences.

\*\* Special Frequency 2 means collection of samples quarterly (in the event of flow during the quarter) at a time when there is flow and as soon as practicable after each wet weather discharge from points 11 and 12 commences and in any case not more than 12 hours after each discharge commences.

## Rocgen Coal Mine- Monthly Monitoring Summary

**Table 3 – Monitoring (Quarterly & Yearly – No Limits apply)**

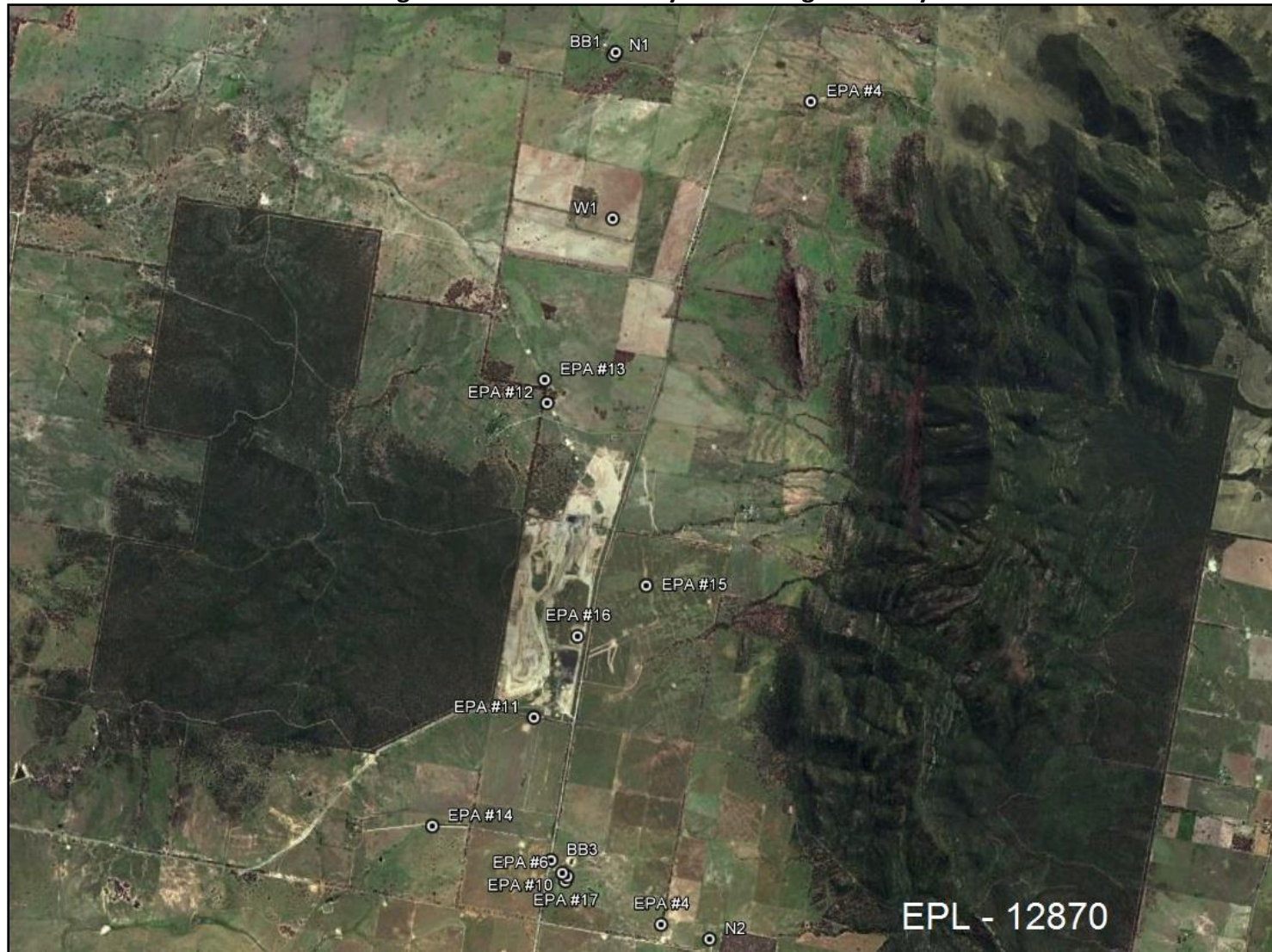
EPL ID	Pollutant	Units of Measure	Monitoring Frequency	No. of Samples for the Month	Date Sampled	Date Obtained	Min Value	Mean Value	Median Value	Max Value/Only Value
16	Aluminium	mg/L	Yearly (Void)	1	26/06/2024	04/07/2024	-	-	-	0.32
	Arsenic	mg/L					-	-	-	0.008
	Bicarbonate	mg/L					-	-	-	219
	Chloride	mg/L					-	-	-	105
	Iron	mg/L					-	-	-	0.15
	Manganese	mg/L					-	-	-	0.029
	Sodium	mg/L					-	-	-	146
16	Conductivity	µS/cm	Quarterly (Void)	0	-	-	-	-	-	-
	Oil & Grease	mg/L					-	-	-	-
	pH	pH					-	-	-	-
	TOC	mg/L					-	-	-	-
	TSS	mg/L					-	-	-	-

**Figure 1 – EPL 12870 Monitoring Locations**



# WHITEHAVEN COAL

## Rocgen Coal Mine- Monthly Monitoring Summary







## Rocglen Coal Mine- Monthly Monitoring Summary

### Site Information

**EPL No:** 12870

**EPA Website Link:** <http://epa.nsw.gov.au/prpoeoapp/ViewPOEOLicence.aspx?DOCID=40278&SYSUID=1&LICID=12870>

**Licensee:** Whitehaven Coal Mining Pty Ltd

**Licensee Address:** Rocglen Coal Mine, Wean Road, GUNNEDAH NSW 2380

**EPL Monitoring Points:** See Figure 1 below

**Sampling Period:** July 2024

**Obtained Date:** 08<sup>th</sup> August 2024

**Publication Date:** 19<sup>th</sup> August 2024

**Table 1 - No Pollutant Limits Apply**

EPL ID	Pollutant	Units of Measure	Monitoring Frequency	No. of Samples for the Month	Date(s) Sampled	Date(s) Obtained	Min Value	Mean Value	Median Value	Max or Only Value
4	Particulates-Deposited Matter (BD4)	g/m <sup>2</sup> /month	Continuous	1	10/07/24	23/07/2024	-	-	-	5.3
6	Particulates-Deposited Matter (BD6)	g/m <sup>2</sup> /month	Continuous	1	10/07/2024	23/07/2024	-	-	-	0.3
10	PM <sub>10</sub>	µg/m <sup>3</sup>	Every 6 days	5	04/07/2024 10/07/2024 16/07/2024 22/07/2024 28/07/2024	08/08/2024	1.6	4.14	3.9	6
11	Conductivity	µS/cm	Special Frequency 1*	0	-	-	-	-	-	-
	Total organic carbon	mg/L					-	-	-	-
12	Conductivity	µS/cm	Special Frequency 1*	0	-	-	-	-	-	-
	Total organic carbon	mg/L					-	-	-	-
13	TSS	mg/L	Special Frequency 2**(DDCK)	0	-	-	-	-	-	-
	Conductivity	µS/cm					-	-	-	-
	Oil & Grease	mg/L					-	-	-	-
	pH	pH					-	-	-	-
	Total organic carbon	mg/L					-	-	-	-



## Rocgen Coal Mine- Monthly Monitoring Summary

EPL ID	Pollutant	Units of Measure	Monitoring Frequency	No. of Samples for the Month	Date(s) Sampled	Date(s) Obtained	Min Value	Mean Value	Median Value	Max or Only Value
14	TSS	mg/L	Special Frequency 2**(UNDC)	0	-	-	-	-	-	-
	Conductivity	µS/cm					-	-	-	-
	Oil & Grease	mg/L					-	-	-	-
	pH	pH					-	-	-	-
	Total organic carbon	mg/L					-	-	-	-
15	TSS	mg/L	Special Frequency 2**(SD7)	0			-	-	-	-
	Conductivity	µS /cm					-	-	-	-
	Oil & Grease	mg/L					-	-	-	-
	pH	pH					-	-	-	-
	Total organic carbon	mg/L					-	-	-	-

Table 2 - Pollutant Limits Apply

EPL ID	Pollutant	Units of Measure	Monitoring Frequency	No. of Samples for the Month	Date(s) Sampled	Date(s) Obtained	Min Value	Max or Only Value	100%ile Limit	Exceedance (Yes/No)	Comments
11	TSS	mg/L	Special Frequency 1*	0	-	-	-	-	-	No	-
	Oil & Grease	mg/L					-	-	-	No	
	pH	pH					-	-	-	No	
12	TSS	mg/L	Special Frequency 1*	0	-	-	-	-	-	No	-
	Oil & Grease	mg/L					-	-	-	No	
	pH	pH					-	-	-	No	

\* Special Frequency 1 means the collection of samples as soon as practicable after each discharge commences and in any case not more than 12 hours after each discharge commences.

\*\* Special Frequency 2 means collection of samples quarterly (in the event of flow during the quarter) at a time when there is flow and as soon as practicable after each wet weather discharge from points 11 and 12 commences and in any case not more than 12 hours after each discharge commences.

**Rocgen Coal Mine- Monthly Monitoring Summary**
**Table 3 – Monitoring (Quarterly & Yearly – No Limits apply)**

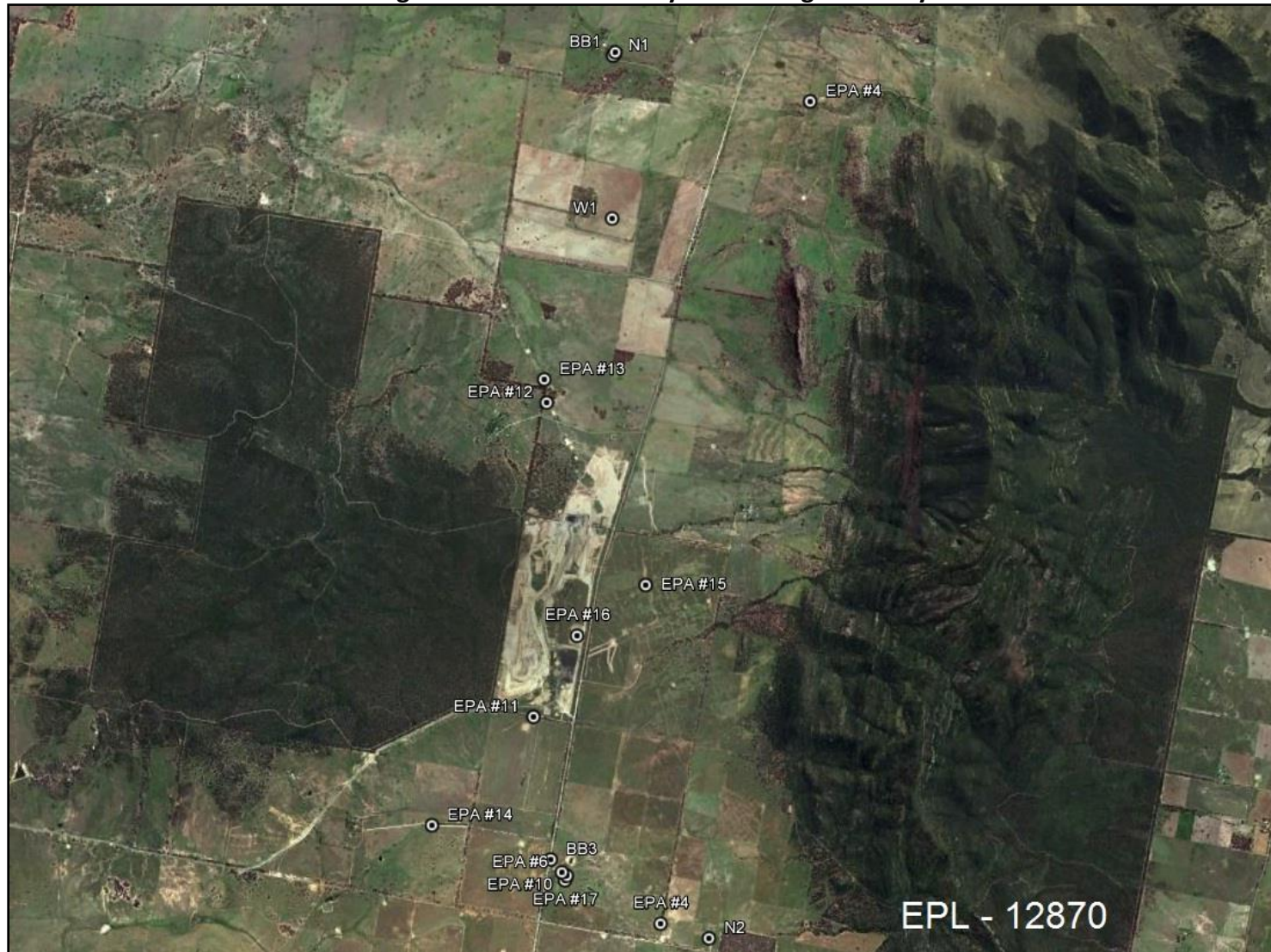
EPL ID	Pollutant	Units of Measure	Monitoring Frequency	No. of Samples for the Month	Date Sampled	Date Obtained	Min Value	Mean Value	Median Value	Max Value/Only Value
16	Aluminium	mg/L	Yearly (Void)	0	-	-	-	-	-	-
	Arsenic	mg/L					-	-	-	-
	Bicarbonate	mg/L					-	-	-	-
	Chloride	mg/L					-	-	-	-
	Iron	mg/L					-	-	-	-
	Manganese	mg/L					-	-	-	-
	Sodium	mg/L					-	-	-	-
16	Conductivity	µS/cm	Quarterly (Void)	0	-	-	-	-	-	-
	Oil & Grease	mg/L					-	-	-	-
	pH	pH					-	-	-	-
	TOC	mg/L					-	-	-	-
	TSS	mg/L					-	-	-	-

**Figure 1 – EPL 12870 Monitoring Locations**



# WHITEHAVEN COAL

## Rocgen Coal Mine- Monthly Monitoring Summary





## Rocglen Coal Mine- Monthly Monitoring Summary

### Site Information

EPL No: 12870

EPA Website Link: <http://epa.nsw.gov.au/prpoeoapp/ViewPOEOLicence.aspx?DOCID=40278&SYSUID=1&LICID=12870>

Licensee: Whitehaven Coal Mining Pty Ltd

Licensee Address: Rocglen Coal Mine, Wean Road, GUNNEDAH NSW 2380

EPL Monitoring Points: See Figure 1 below

Sampling Period: August 2024

Obtained Date: 10<sup>th</sup> September 2024

Publication Date: 19<sup>th</sup> September 2024

Table 1 - No Pollutant Limits Apply

EPL ID	Pollutant	Units of Measure	Monitoring Frequency	No. of Samples for the Month	Date(s) Sampled	Date(s) Obtained	Min Value	Mean Value	Median Value	Max or Only Value
4	Particulates-Deposited Matter (BD4)	g/m <sup>2</sup> /month	Continuous	1	08/08/24	30/08/2024	-	-	-	1.2
6	Particulates-Deposited Matter (BD6)	g/m <sup>2</sup> /month	Continuous	1	08/08/2024	30/08/2024	-	-	-	0.9
10	PM <sub>10</sub>	µg/m <sup>3</sup>	Every 6 days	4	07/08/2024 15/08/2024 21/08/2024 27/08/2024	10/09/2024	1.5	8.6	10.25	17.4
11	Conductivity	µS/cm	Special Frequency 1*	1	06/08/2024	-	-	-	-	379
	Total organic carbon	mg/L					-	-	-	5
12	Conductivity	µS/cm	Special Frequency 1*	0	-	-	-	-	-	-
	Total organic carbon	mg/L					-	-	-	-
13	TSS	mg/L	Special Frequency 2**(DDCK)	0	-	-	-	-	-	-
	Conductivity	µS/cm					-	-	-	-
	Oil & Grease	mg/L					-	-	-	-
	pH	pH					-	-	-	-
	Total organic carbon	mg/L					-	-	-	-



# WHITEHAVEN COAL

## Rocgen Coal Mine- Monthly Monitoring Summary

EPL ID	Pollutant	Units of Measure	Monitoring Frequency	No. of Samples for the Month	Date(s) Sampled	Date(s) Obtained	Min Value	Mean Value	Median Value	Max or Only Value
14	TSS	mg/L	Special Frequency 2**(UNDC)	1	06/08/2024	15/08/2024	-	-	-	117
	Conductivity	µS/cm					-	-	-	118
	Oil & Grease	mg/L					-	-	-	5
	pH	pH					-	-	-	7.41
	Total organic carbon	mg/L					-	-	-	13
15	TSS	mg/L	Special Frequency 2**(SD7)	0			-	-	-	-
	Conductivity	µS /cm					-	-	-	-
	Oil & Grease	mg/L					-	-	-	-
	pH	pH					-	-	-	-
	Total organic carbon	mg/L					-	-	-	-

Table 2 - Pollutant Limits Apply

EPL ID	Pollutant	Units of Measure	Monitoring Frequency	No. of Samples for the Month	Date(s) Sampled	Date(s) Obtained	Min Value	Max or Only Value	100%ile Limit	Exceedance (Yes/No)	Comments
11	TSS	mg/L	Special Frequency 1*	1	06/08/2024	15/08/2024	-	102	-	No	-
	Oil & Grease	mg/L					-	< 5	-	No	
	pH	pH					-	7.75	-	No	
12	TSS	mg/L	Special Frequency 1*	0	-	-	-	-	-	No	-
	Oil & Grease	mg/L					-	-	-	No	
	pH	pH					-	-	-	No	

\* Special Frequency 1 means the collection of samples as soon as practicable after each discharge commences and in any case not more than 12 hours after each discharge commences.

\*\* Special Frequency 2 means collection of samples quarterly (in the event of flow during the quarter) at a time when there is flow and as soon as practicable after each wet weather discharge from points 11 and 12 commences and in any case not more than 12 hours after each discharge commences.



# WHITEHAVEN COAL

## Rocgen Coal Mine- Monthly Monitoring Summary

Table 3 – Monitoring (Quarterly & Yearly – No Limits apply)

EPL ID	Pollutant	Units of Measure	Monitoring Frequency	No. of Samples for the Month	Date Sampled	Date Obtained	Min Value	Mean Value	Median Value	Max Value/Only Value
16	Aluminium	mg/L	Yearly (Void)	0			-	-	-	-
	Arsenic	mg/L					-	-	-	-
	Bicarbonate	mg/L					-	-	-	-
	Chloride	mg/L					-	-	-	-
	Iron	mg/L					-	-	-	-
	Manganese	mg/L					-	-	-	-
	Sodium	mg/L					-	-	-	-
16	Conductivity	µS/cm	Quarterly (Void)	1	13/08/2024	21/08/2024	-	-	-	600
	Oil & Grease	mg/L					-	-	-	< 5
	pH	pH					-	-	-	8.48
	TOC	mg/L					-	-	-	4
	TSS	mg/L					-	-	-	16

Figure 1 – EPL 12870 Monitoring Locations



# WHITEHAVEN COAL

## Rocgen Coal Mine- Monthly Monitoring Summary







## Rocglen Coal Mine- Monthly Monitoring Summary

### Site Information

**EPL No:** 12870

**EPA Website Link:** <http://epa.nsw.gov.au/prpoeoapp/ViewPOEOLicence.aspx?DOCID=40278&SYSUID=1&LICID=12870>

**Licensee:** Whitehaven Coal Mining Pty Ltd

**Licensee Address:** Rocglen Coal Mine, Wean Road, GUNNEDAH NSW 2380

**EPL Monitoring Points:** See Figure 1 below

**Sampling Period:** September 2024

**Obtained Date:** 09<sup>th</sup> October 2024

**Publication Date:** 15<sup>th</sup> October 2024

**Table 1 - No Pollutant Limits Apply**

EPL ID	Pollutant	Units of Measure	Monitoring Frequency	No. of Samples for the Month	Date(s) Sampled	Date(s) Obtained	Min Value	Mean Value	Median Value	Max or Only Value
4	Particulates-Deposited Matter (BD4)	g/m <sup>2</sup> /month	Continuous	1	05/09/2024	23/09/2024	-	-	-	0.7
6	Particulates-Deposited Matter (BD6)	g/m <sup>2</sup> /month	Continuous	1	05/09/2024	23/09/2024	-	-	-	1.1
10	PM <sub>10</sub>	µg/m <sup>3</sup>	Every 6 days	5	02/09/2024 08/09/2024 14/09/2024 20/09/2024 26/09/2024	09/10/2024	2.9	10.12	10.6	16.2
11	Conductivity	µS/cm	Special Frequency 1*	0		-	-	-	-	-
	Total organic carbon	mg/L					-	-	-	-
12	Conductivity	µS/cm	Special Frequency 1*	0	-	-	-	-	-	-
	Total organic carbon	mg/L					-	-	-	-
13	TSS	mg/L	Special Frequency 2**(DDCK)	0	-	-	-	-	-	-
	Conductivity	µS/cm					-	-	-	-
	Oil & Grease	mg/L					-	-	-	-
	pH	pH					-	-	-	-
	Total organic carbon	mg/L					-	-	-	-



## Rocgen Coal Mine- Monthly Monitoring Summary

EPL ID	Pollutant	Units of Measure	Monitoring Frequency	No. of Samples for the Month	Date(s) Sampled	Date(s) Obtained	Min Value	Mean Value	Median Value	Max or Only Value
14	TSS	mg/L	Special Frequency 2**(UNDC)	0	-	-	-	-	-	-
	Conductivity	µS/cm					-	-	-	-
	Oil & Grease	mg/L					-	-	-	-
	pH	pH					-	-	-	-
	Total organic carbon	mg/L					-	-	-	-
15	TSS	mg/L	Special Frequency 2**(SD7)	0	-	-	-	-	-	-
	Conductivity	µS /cm					-	-	-	-
	Oil & Grease	mg/L					-	-	-	-
	pH	pH					-	-	-	-
	Total organic carbon	mg/L					-	-	-	-

**Table 2 - Pollutant Limits Apply**

EPL ID	Pollutant	Units of Measure	Monitoring Frequency	No. of Samples for the Month	Date(s) Sampled	Date(s) Obtained	Min Value	Max or Only Value	100%ile Limit	Exceedance (Yes/No)	Comments
11	TSS	mg/L	Special Frequency 1*	0	-	-	-	-	-	No	-
	Oil & Grease	mg/L					-	-	-	No	
	pH	pH					-	-	-	No	
12	TSS	mg/L	Special Frequency 1*	0	-	-	-	-	-	No	-
	Oil & Grease	mg/L					-	-	-	No	
	pH	pH					-	-	-	No	

\* Special Frequency 1 means the collection of samples as soon as practicable after each discharge commences and in any case not more than 12 hours after each discharge commences.

\*\* Special Frequency 2 means collection of samples quarterly (in the event of flow during the quarter) at a time when there is flow and as soon as practicable after each wet weather discharge from points 11 and 12 commences and in any case not more than 12 hours after each discharge commences.

**Rocgen Coal Mine- Monthly Monitoring Summary**
**Table 3 – Monitoring (Quarterly & Yearly – No Limits apply)**

EPL ID	Pollutant	Units of Measure	Monitoring Frequency	No. of Samples for the Month	Date Sampled	Date Obtained	Min Value	Mean Value	Median Value	Max Value/Only Value
16	Aluminium	mg/L	Yearly (Void)	-	-	-	-	-	-	-
	Arsenic	mg/L					-	-	-	-
	Bicarbonate	mg/L					-	-	-	-
	Chloride	mg/L					-	-	-	-
	Iron	mg/L					-	-	-	-
	Manganese	mg/L					-	-	-	-
	Sodium	mg/L					-	-	-	-
16	Conductivity	µS/cm	Quarterly (Void)	-	-	-	-	-	-	-
	Oil & Grease	mg/L					-	-	-	-
	pH	pH					-	-	-	-
	TOC	mg/L					-	-	-	-
	TSS	mg/L					-	-	-	-

**Figure 1 – EPL 12870 Monitoring Locations**



# WHITEHAVEN COAL

## Rocgen Coal Mine- Monthly Monitoring Summary





## Rocglen Coal Mine- Monthly Monitoring Summary

### Site Information

**EPL No:** 12870

**EPA Website Link:** <http://epa.nsw.gov.au/prpoeoapp/ViewPOEOLicence.aspx?DOCID=40278&SYSUID=1&LICID=12870>

**Licensee:** Whitehaven Coal Mining Pty Ltd

**Licensee Address:** Rocglen Coal Mine, Wean Road, GUNNEDAH NSW 2380

**EPL Monitoring Points:** See Figure 1 below

**Sampling Period:** October 2024

**Obtained Date:** 7<sup>th</sup> November 2024

**Publication Date:** 12<sup>th</sup> November 2024

**Table 1 - No Pollutant Limits Apply**

EPL ID	Pollutant	Units of Measure	Monitoring Frequency	No. of Samples for the Month	Date(s) Sampled	Date(s) Obtained	Min Value	Mean Value	Median Value	Max or Only Value
4	Particulates-Deposited Matter (BD4)	g/m <sup>2</sup> /month	Continuous	1	03/10/2024	23/10/2024	-	-	-	0.3
6	Particulates-Deposited Matter (BD6)	g/m <sup>2</sup> /month	Continuous	1	03/10/2024	23/10/2024	-	-	-	0.5
10	PM <sub>10</sub>	µg/m <sup>3</sup>	Every 6 days	5	02/10/2024 08/10/2024 14/10/2024 20/10/2024 26/10/2024	07/11/2024	5.0	9.02	8.0	13.6
11	Conductivity	µS/cm	Special Frequency 1*	0		-	-	-	-	-
	Total organic carbon	mg/L					-	-	-	-
12	Conductivity	µS/cm	Special Frequency 1*	0	-	-	-	-	-	-
	Total organic carbon	mg/L					-	-	-	-
13	TSS	mg/L	Special Frequency 2**(DDCK)	0	-	-	-	-	-	-
	Conductivity	µS/cm					-	-	-	-
	Oil & Grease	mg/L					-	-	-	-
	pH	pH					-	-	-	-
	Total organic carbon	mg/L					-	-	-	-



# WHITEHAVEN COAL

## Rocgen Coal Mine- Monthly Monitoring Summary

EPL ID	Pollutant	Units of Measure	Monitoring Frequency	No. of Samples for the Month	Date(s) Sampled	Date(s) Obtained	Min Value	Mean Value	Median Value	Max or Only Value
14	TSS	mg/L	Special Frequency 2**(UNDC)	0	-	-	-	-	-	-
	Conductivity	µS/cm					-	-	-	-
	Oil & Grease	mg/L					-	-	-	-
	pH	pH					-	-	-	-
	Total organic carbon	mg/L					-	-	-	-
15	TSS	mg/L	Special Frequency 2**(SD7)	0	-	-	-	-	-	-
	Conductivity	µS /cm					-	-	-	-
	Oil & Grease	mg/L					-	-	-	-
	pH	pH					-	-	-	-
	Total organic carbon	mg/L					-	-	-	-

Table 2 - Pollutant Limits Apply

EPL ID	Pollutant	Units of Measure	Monitoring Frequency	No. of Samples for the Month	Date(s) Sampled	Date(s) Obtained	Min Value	Max or Only Value	100%ile Limit	Exceedance (Yes/No)	Comments
11	TSS	mg/L	Special Frequency 1*	0	-	-	-	-	-	No	-
	Oil & Grease	mg/L					-	-	-	No	
	pH	pH					-	-	-	No	
12	TSS	mg/L	Special Frequency 1*	0	-	-	-	-	-	No	-
	Oil & Grease	mg/L					-	-	-	No	
	pH	pH					-	-	-	No	

\* Special Frequency 1 means the collection of samples as soon as practicable after each discharge commences and in any case not more than 12 hours after each discharge commences.

\*\* Special Frequency 2 means collection of samples quarterly (in the event of flow during the quarter) at a time when there is flow and as soon as practicable after each wet weather discharge from points 11 and 12 commences and in any case not more than 12 hours after each discharge commences.

**Rocgen Coal Mine- Monthly Monitoring Summary**
**Table 3 – Monitoring (Quarterly & Yearly – No Limits apply)**

EPL ID	Pollutant	Units of Measure	Monitoring Frequency	No. of Samples for the Month	Date Sampled	Date Obtained	Min Value	Mean Value	Median Value	Max Value/Only Value
16	Aluminium	mg/L	Yearly (Void)	-	-	-	-	-	-	-
	Arsenic	mg/L					-	-	-	-
	Bicarbonate	mg/L					-	-	-	-
	Chloride	mg/L					-	-	-	-
	Iron	mg/L					-	-	-	-
	Manganese	mg/L					-	-	-	-
	Sodium	mg/L					-	-	-	-
16	Conductivity	µS/cm	Quarterly (Void)	-	-	-	-	-	-	-
	Oil & Grease	mg/L					-	-	-	-
	pH	pH					-	-	-	-
	TOC	mg/L					-	-	-	-
	TSS	mg/L					-	-	-	-

**Figure 1 – EPL 12870 Monitoring Locations**



# WHITEHAVEN COAL

## Rocgen Coal Mine- Monthly Monitoring Summary







## Rocglen Coal Mine- Monthly Monitoring Summary

### Site Information

**EPL No:** 12870

**EPA Website Link:** <http://epa.nsw.gov.au/prpoeoapp/ViewPOEOLicence.aspx?DOCID=40278&SYSUID=1&LICID=12870>

**Licensee:** Whitehaven Coal Mining Pty Ltd

**Licensee Address:** Rocglen Coal Mine, Wean Road, GUNNEDAH NSW 2380

**EPL Monitoring Points:** See Figure 1 below

**Sampling Period:** November 2024

**Obtained Date:** 9<sup>th</sup> December 2024

**Publication Date:** 23<sup>rd</sup> December 2024

**Table 1 - No Pollutant Limits Apply**

EPL ID	Pollutant	Units of Measure	Monitoring Frequency	No. of Samples for the Month	Date(s) Sampled	Date(s) Obtained	Min Value	Mean Value	Median Value	Max or Only Value
4	Particulates-Deposited Matter (BD4)	g/m <sup>2</sup> /month	Continuous	1	4/11/2024	26/11/2024	-	-	-	0.9
6	Particulates-Deposited Matter (BD6)	g/m <sup>2</sup> /month	Continuous	1	4/11/2024	26/11/2024	-	-	-	0.6
10	PM <sub>10</sub>	µg/m <sup>3</sup>	Every 6 days	5	01/11/2024 07/11/2024 13/11/2024 19/11/2024 25/11/2024	09/12/2024	9.9	17.6	15.9	29.5
11	Conductivity	µS/cm	Special Frequency 1*	0		-	-	-	-	-
	Total organic carbon	mg/L					-	-	-	-
12	Conductivity	µS/cm	Special Frequency 1*	0	-	-	-	-	-	-
	Total organic carbon	mg/L					-	-	-	-
13	TSS	mg/L	Special Frequency 2**(DDCK)	0	-	-	-	-	-	-
	Conductivity	µS/cm					-	-	-	-
	Oil & Grease	mg/L					-	-	-	-
	pH	pH					-	-	-	-
	Total organic carbon	mg/L					-	-	-	-



# WHITEHAVEN COAL

## Rocgen Coal Mine- Monthly Monitoring Summary

EPL ID	Pollutant	Units of Measure	Monitoring Frequency	No. of Samples for the Month	Date(s) Sampled	Date(s) Obtained	Min Value	Mean Value	Median Value	Max or Only Value
14	TSS	mg/L	Special Frequency 2**(UNDC)	0	-	-	-	-	-	-
	Conductivity	µS/cm					-	-	-	-
	Oil & Grease	mg/L					-	-	-	-
	pH	pH					-	-	-	-
	Total organic carbon	mg/L					-	-	-	-
15	TSS	mg/L	Special Frequency 2**(SD7)	0	-	-	-	-	-	-
	Conductivity	µS /cm					-	-	-	-
	Oil & Grease	mg/L					-	-	-	-
	pH	pH					-	-	-	-
	Total organic carbon	mg/L					-	-	-	-

Table 2 - Pollutant Limits Apply

EPL ID	Pollutant	Units of Measure	Monitoring Frequency	No. of Samples for the Month	Date(s) Sampled	Date(s) Obtained	Min Value	Max or Only Value	100%ile Limit	Exceedance (Yes/No)	Comments
11	TSS	mg/L	Special Frequency 1*	1	2/12/2024	12/12/2024	-	54	-	No	56.8mm in a 5 day period
	Oil & Grease	mg/L					-	<5	-	No	
	pH	pH					-	8.33	-	No	
12	TSS	mg/L	Special Frequency 1*	0	-	-	-	-	-	No	-
	Oil & Grease	mg/L					-	-	-	No	
	pH	pH					-	-	-	No	

\* Special Frequency 1 means the collection of samples as soon as practicable after each discharge commences and in any case not more than 12 hours after each discharge commences.

\*\* Special Frequency 2 means collection of samples quarterly (in the event of flow during the quarter) at a time when there is flow and as soon as practicable after each wet weather discharge from points 11 and 12 commences and in any case not more than 12 hours after each discharge commences.



## Rocgen Coal Mine- Monthly Monitoring Summary

Table 3 – Monitoring (Quarterly & Yearly – No Limits apply)

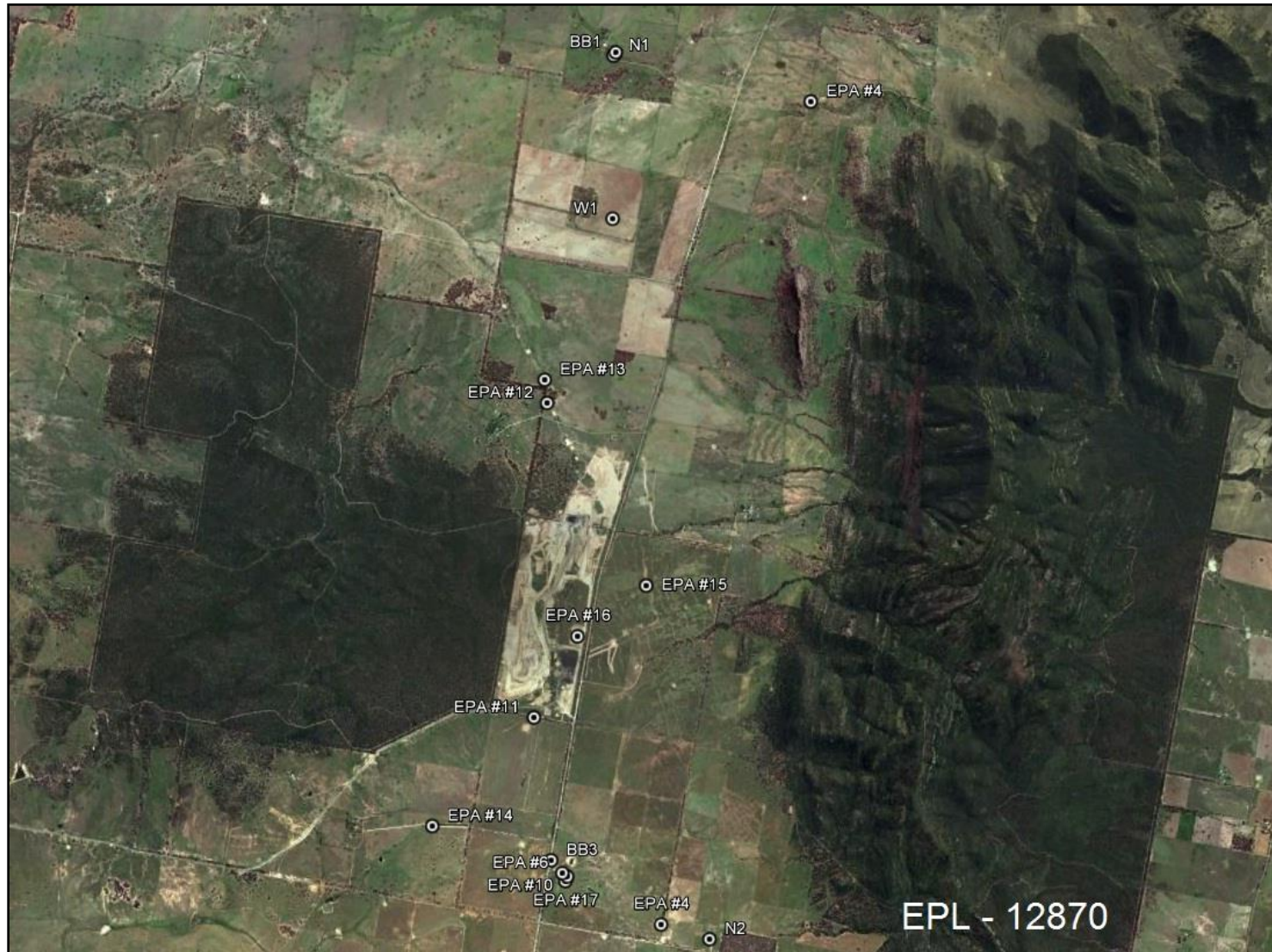
EPL ID	Pollutant	Units of Measure	Monitoring Frequency	No. of Samples for the Month	Date Sampled	Date Obtained	Min Value	Mean Value	Median Value	Max Value/Only Value
16	Aluminium	mg/L	Yearly (Void)	-	-	-	-	-	-	-
	Arsenic	mg/L					-	-	-	-
	Bicarbonate	mg/L					-	-	-	-
	Chloride	mg/L					-	-	-	-
	Iron	mg/L					-	-	-	-
	Manganese	mg/L					-	-	-	-
	Sodium	mg/L					-	-	-	-
16	Conductivity	µS/cm	Quarterly (Void)	1	20/11/2024	-	-	-	-	1160
	Oil & Grease	mg/L					-	-	-	<5
	pH	pH					-	-	-	9.03
	TOC	mg/L					-	-	-	13
	TSS	mg/L					-	-	-	*

\*Laboratory reporting error, result to be added in due course



# WHITEHAVEN COAL

Rocglen Coal Mine- Monthly Monitoring Summary  
Figure 1 – EPL 12870 Monitoring Locations





## Rocglen Coal Mine- Monthly Monitoring Summary

### Site Information

**EPL No:** 12870

**EPA Website Link:** <http://epa.nsw.gov.au/prpoeoapp/ViewPOEOLicence.aspx?DOCID=40278&SYSUID=1&LICID=12870>

**Licensee:** Whitehaven Coal Mining Pty Ltd

**Licensee Address:** Rocglen Coal Mine, Wean Road, GUNNEDAH NSW 2380

**EPL Monitoring Points:** See Figure 1 below

**Sampling Period:** December 2024

**Obtained Date:** 7<sup>th</sup> January 2025

**Publication Date:** 13<sup>th</sup> January 2025

**Table 1 - No Pollutant Limits Apply**

EPL ID	Pollutant	Units of Measure	Monitoring Frequency	No. of Samples for the Month	Date(s) Sampled	Date(s) Obtained	Min Value	Mean Value	Median Value	Max or Only Value
4	Particulates-Deposited Matter (BD4)	g/m <sup>2</sup> /month	Continuous	1	6/12/2024	19/12/2024	-	-	-	1.5
6	Particulates-Deposited Matter (BD6)	g/m <sup>2</sup> /month	Continuous	1	6/12/2024	19/12/2024	-	-	-	0.9
10	PM <sub>10</sub>	µg/m <sup>3</sup>	Every 6 days	5	01/12/2024 07/12/2024 13/12/2024 19/12/2024 25/12/2024	07/01/2025	8.8	14.4	13	18.9
11	Conductivity	µS/cm	Special Frequency 1*	0		-	-	-	-	-
	Total organic carbon	mg/L					-	-	-	-
12	Conductivity	µS/cm	Special Frequency 1*	0	-	-	-	-	-	-
	Total organic carbon	mg/L					-	-	-	-
13	TSS	mg/L	Special Frequency 2**(DDCK)	0	-	-	-	-	-	-
	Conductivity	µS/cm					-	-	-	-
	Oil & Grease	mg/L					-	-	-	-
	pH	pH					-	-	-	-
	Total organic carbon	mg/L					-	-	-	-



# WHITEHAVEN COAL

## Rocgen Coal Mine- Monthly Monitoring Summary

EPL ID	Pollutant	Units of Measure	Monitoring Frequency	No. of Samples for the Month	Date(s) Sampled	Date(s) Obtained	Min Value	Mean Value	Median Value	Max or Only Value
14	TSS	mg/L	Special Frequency 2**(UNDC)	0	-	-	-	-	-	-
	Conductivity	µS/cm					-	-	-	-
	Oil & Grease	mg/L					-	-	-	-
	pH	pH					-	-	-	-
	Total organic carbon	mg/L					-	-	-	-
15	TSS	mg/L	Special Frequency 2**(SD7)	0	-	-	-	-	-	-
	Conductivity	µS /cm					-	-	-	-
	Oil & Grease	mg/L					-	-	-	-
	pH	pH					-	-	-	-
	Total organic carbon	mg/L					-	-	-	-

Table 2 - Pollutant Limits Apply

EPL ID	Pollutant	Units of Measure	Monitoring Frequency	No. of Samples for the Month	Date(s) Sampled	Date(s) Obtained	Min Value	Max or Only Value	100%ile Limit	Exceedance (Yes/No)	Comments
11	TSS	mg/L	Special Frequency 1*	0	-	-	-	-	-	No	-
	Oil & Grease	mg/L					-	-	-	No	
	pH	pH					-	-	-	No	
12	TSS	mg/L	Special Frequency 1*	0	-	-	-	-	-	No	-
	Oil & Grease	mg/L					-	-	-	No	
	pH	pH					-	-	-	No	

\* Special Frequency 1 means the collection of samples as soon as practicable after each discharge commences and in any case not more than 12 hours after each discharge commences.

\*\* Special Frequency 2 means collection of samples quarterly (in the event of flow during the quarter) at a time when there is flow and as soon as practicable after each wet weather discharge from points 11 and 12 commences and in any case not more than 12 hours after each discharge commences.

## Rocgen Coal Mine- Monthly Monitoring Summary

**Table 3 – Monitoring (Quarterly & Yearly – No Limits apply)**

EPL ID	Pollutant	Units of Measure	Monitoring Frequency	No. of Samples for the Month	Date Sampled	Date Obtained	Min Value	Mean Value	Median Value	Max Value/Only Value
16	Aluminium	mg/L	Yearly (Void)	-	-	-	-	-	-	-
	Arsenic	mg/L					-	-	-	-
	Bicarbonate	mg/L					-	-	-	-
	Chloride	mg/L					-	-	-	-
	Iron	mg/L					-	-	-	-
	Manganese	mg/L					-	-	-	-
	Sodium	mg/L					-	-	-	-
16	Conductivity	µS/cm	Quarterly (Void)	1	24/12/2024	06/01/2025	-	-	-	*
	Oil & Grease	mg/L					-	-	-	*
	pH	pH					-	-	-	*
	TOC	mg/L					-	-	-	*
	TSS	mg/L					-	-	-	232

\*As reported in EPL report - November, 2024



# WHITEHAVEN COAL

Rocglen Coal Mine- Monthly Monitoring Summary  
Figure 1 – EPL 12870 Monitoring Locations

