

NARRABRI MINE – MONTHLY MONITORING SUMMARY

Site Information

EPL No: 12789

EPA Website Link: <http://www.epa.nsw.gov.au/prpoeoapp/ViewPOEOLicence.aspx?DOCID=106922&SYSUID=1&LICID=12789>

Licensee: Narrabri Coal Operations Pty Ltd

Licensee Address: Narrabri Mine, 10 Kurrajong Creek Road, BAAN BAA NSW 2390

EPL Monitoring Points: See Figure 1 below

Sampling Period: January 2026

Obtained Date: 18/02/2026

Publication Date: 19/02/2026

Table 1 – No Pollutant Limits Apply

EPL ID	Pollutant	Units of Measure	Sample Method	Monitoring Frequency	No. of Samples for the Month	Dates Sampled	Date Obtained	Min Value	Mean Value	Median Value	Max or Only Value
ND3	Deposited Matter	g/m ² /month	Lab Analysis	Once a month (min. 4 weeks)	1	7/01/2026	19/01/2026	NA	NA	NA	0.7
11 (SD4)	Conductivity	µs/cm	In situ	Upon discharge (within 12 hours)	<i>No discharge occurred during sampling period (SD4)</i>						
	TOC	mg/L	Lab Analysis								
13 (SD2)	Conductivity	µs/cm	In situ	Upon discharge (within 12 hours)	<i>No discharge occurred during sampling period (SD2)</i>						
	TOC	mg/L	Lab Analysis								
	TOC	mg/L	Lab Analysis								
14 (KC1US)	Conductivity	µs/cm	In situ	In the event of flow during the quarter & after each wet weather discharge from points 11, 13, 18,27, 43	<i>No flow recorded during sampling period of EPL 43</i>						
	TOC	mg/L	Lab Analysis								
	Oil & Grease	mg/L	Lab Analysis								
	pH	pH	In situ								
	TSS	mg/L	Lab Analysis								
15 (KC1DS)	Conductivity	µs/cm	In situ	In the event of flow during the quarter & after each wet weather discharge from points 11, 13, 18,27, 43	<i>No flow recorded during sampling period of EPL 43</i>						
	TOC	mg/L	Lab Analysis								
	Oil & Grease	mg/L	Lab Analysis								
	pH	pH	In situ								
	TSS	mg/L	Lab Analysis								

16 (KC2US)	Conductivity	µs/cm	In situ	In the event of flow during the quarter & after each wet weather discharge from points 11, 13, 18,27, 43	<i>No flow recorded during sampling period of EPL 43</i>
	TOC	mg/L	Lab Analysis		
	Oil & Grease	mg/L	Lab Analysis		
	pH	pH	In situ		
	TSS	mg/L	Lab Analysis		
17 (KC2DS)	Conductivity	µs/cm	In situ	In the event of flow during the quarter & after each wet weather discharge from points 11, 13, 18,27,43	<i>No flow recorded during sampling period of EPL 43</i>
	TOC	mg/L	Lab Analysis		
	Oil & Grease	mg/L	Lab Analysis		
	pH	pH	In situ		
	TSS	mg/L	Lab Analysis		
18 (SD7)	Conductivity	µs/cm	In Situ	Upon discharge (within 12 hours)	<i>No discharge occurred during sampling period (SD7)</i>
	TOC	mg/L	Lab Analysis		
19 (KCUS)	Conductivity	µs/cm	In situ	In the event of flow during the quarter & after each wet weather discharge from points 11, 13, 18,27,43	<i>No flow recorded during sampling period of EPL 43</i>
	TOC	mg/L	Lab Analysis		
	Oil & Grease	mg/L	Lab Analysis		
	pH	pH	In situ		
	TSS	mg/L	Lab Analysis		

20 (KCDS)	Conductivity	µs/cm	In situ	In the event of flow during the quarter & after each wet weather discharge from points 11, 13, 18,27,43	<i>No flow recorded during discharge of EPL 43</i>
	TOC	mg/L	Lab Analysis		
	Oil & Grease	mg/L	Lab Analysis		
	pH	pH	In situ		
	TSS	mg/L	Lab Analysis		
21 (PCa)	Conductivity	µs/cm	In situ	In the event of flow during the quarter & after each wet weather discharge from points 11, 13, 18,27,43	<i>No flow recorded during sampling period</i>
	TOC	mg/L	Lab Analysis		
	Oil & Grease	mg/L	Lab Analysis		
	pH	pH	In situ		
	TSS	mg/L	Lab Analysis		
22 (PC1)	Conductivity	µs/cm	In situ	In the event of flow during the quarter & after each wet weather discharge from points 11, 13, 18,27,43	<i>No flow recorded during sampling period</i>
	TOC	mg/L	Lab Analysis		
	Oil & Grease	mg/L	Lab Analysis		
	pH	pH	In situ		
	TSS	mg/L	Lab Analysis		
24 (NR1)	pH	pH	In situ	Upon Discharge (within 4 hrs)	<i>Namoi discharge point – Not constructed or currently utilised (NR1)</i>
	TDS	mg/L	Lab Analysis		

25 (NRUS)	pH	pH	In situ	Upon Discharge (within 4 hrs)	<i>Namoi discharge point – Not constructed or currently utilised (NRUS)</i>
	TDS	mg/L	Lab Analysis		
26 (NRDS)	pH	pH	In situ	Upon Discharge (within 4 hrs)	<i>Namoi discharge point – Not constructed or currently utilised (NRDS)</i>
	TDS	mg/L	Lab Analysis		
28 (P28)	Conductivity	µs/cm	In situ	Quarterly	<i>Not scheduled for sampling during this period</i>
	pH	pH	In situ		
	SWL	mbtoc	In situ		
	Bicarbonate	mg/L	Lab Analysis		
	Calcium	mg/L	Lab Analysis		
	Carbonate	mg/L	Lab Analysis		
	Chloride	mg/L	Lab Analysis		
	Magnesium	mg/L	Lab Analysis		
	Potassium	mg/L	Lab Analysis		
	Sulphate	mg/L	Lab Analysis		
29 (P29)	Conductivity	µs/cm	In situ	Quarterly	<i>Not scheduled for sampling during this period</i>
	pH	pH	In situ		
	SWL	mbtoc	In situ		
	Bicarbonate	mg/L	Lab Analysis		
	Calcium	mg/L	Lab Analysis		
	Carbonate	mg/L	Lab Analysis		
	Chloride	mg/L	Lab Analysis		
	Magnesium	mg/L	Lab Analysis		
	Potassium	mg/L	Lab Analysis		
	Sulphate	mg/L	Lab Analysis		
30 (P30)	Conductivity	µs/cm	In situ	Quarterly	<i>Not scheduled for sampling during this period</i>
	pH	pH	In situ		
	SWL	mbtoc	In situ		
	Bicarbonate	mg/L	Lab Analysis		

	Calcium	mg/L	Lab Analysis		
	Carbonate	mg/L	Lab Analysis		
	Chloride	mg/L	Lab Analysis		
	Magnesium	mg/L	Lab Analysis		
	Potassium	mg/L	Lab Analysis		
	Sodium	mg/L	Lab Analysis		
	Sulphate	mg/L	Lab Analysis		
31 (P31)	Conductivity	µs/cm	In situ	Quarterly	<i>Not scheduled for sampling during this period</i>
	pH	pH	In situ		
	SWL	mbtoc	In situ		
	Bicarbonate	mg/L	Lab Analysis		
	Calcium	mg/L	Lab Analysis		
	Carbonate	mg/L	Lab Analysis		
	Chloride	mg/L	Lab Analysis		
	Magnesium	mg/L	Lab Analysis		
	Potassium	mg/L	Lab Analysis		
	Sodium	mg/L	Lab Analysis		
	Sulphate	mg/L	Lab Analysis		
32 (P32)	Conductivity	µs/cm	In situ	Quarterly	<i>Not scheduled for sampling during this period</i>
	pH	pH	In situ		
	SWL	mbtoc	In situ		
	Bicarbonate	mg/L	Lab Analysis		
	Calcium	mg/L	Lab Analysis		
	Carbonate	mg/L	Lab Analysis		
	Chloride	mg/L	Lab Analysis		
	Magnesium	mg/L	Lab Analysis		
	Potassium	mg/L	Lab Analysis		
	Sodium	mg/L	Lab Analysis		
	Sulphate	mg/L	Lab Analysis		
33 (P33)	Conductivity	µs/cm	In situ	Quarterly	<i>Not scheduled for sampling during this period</i>
	pH	pH	In situ		
	SWL	mbtoc	In situ		

	Bicarbonate	mg/L	Lab Analysis		
	Calcium	mg/L	Lab Analysis		
	Carbonate	mg/L	Lab Analysis		
	Chloride	mg/L	Lab Analysis		
	Magnesium	mg/L	Lab Analysis		
	Potassium	mg/L	Lab Analysis		
	Sodium	mg/L	Lab Analysis		
	Sulphate	mg/L	Lab Analysis		
34 (P34)	Conductivity	µs/cm	In situ	Quarterly	<i>Not scheduled for sampling during this period</i>
	pH	pH	In situ		
	SWL	mbtoc	In situ		
	Bicarbonate	mg/L	Lab Analysis		
	Calcium	mg/L	Lab Analysis		
	Carbonate	mg/L	Lab Analysis		
	Chloride	mg/L	Lab Analysis		
	Magnesium	mg/L	Lab Analysis		
	Potassium	mg/L	Lab Analysis		
	Sodium	mg/L	Lab Analysis		
	Sulphate	mg/L	Lab Analysis		

35 (P58)	Conductivity	µs/cm	In situ	Quarterly	<i>Not scheduled for sampling during this period</i>
	pH	pH	In situ		
	SWL	mbtoc	In situ		
	Bicarbonate	mg/L	Lab Analysis		
	Calcium	mg/L	Lab Analysis		
	Carbonate	mg/L	Lab Analysis		
	Chloride	mg/L	Lab Analysis		
	Magnesium	mg/L	Lab Analysis		
	Potassium	mg/L	Lab Analysis		
	Sodium	mg/L	Lab Analysis		
	Sulfate	mg/L	Lab Analysis		
36 (P83)	Conductivity	µs/cm	In situ	Quarterly	<i>Not scheduled for sampling during this period</i>
	pH	pH	In situ		
	SWL	mbtoc	In situ		
	Bicarbonate	mg/L	Lab Analysis		
	Calcium	mg/L	Lab Analysis		
	Carbonate	mg/L	Lab Analysis		
	Chloride	mg/L	Lab Analysis		
	Magnesium	mg/L	Lab Analysis		
	Potassium	mg/L	Lab Analysis		
	Sodium	mg/L	Lab Analysis		
	Sulphate	mg/L	Lab Analysis		
37 (P84)	Conductivity	µs/cm	In situ	Quarterly	<i>Not scheduled for sampling during this period</i>
	pH	pH	In situ		
	SWL	mbtoc	In situ		
	Bicarbonate	mg/L	Lab Analysis		
	Calcium	mg/L	Lab Analysis		
	Carbonate	mg/L	Lab Analysis		
	Chloride	mg/L	Lab Analysis		
	Magnesium	mg/L	Lab Analysis		
	Potassium	mg/L	Lab Analysis		
	Sodium	mg/L	Lab Analysis		

	Sulphate	mg/L	Lab Analysis		
38 (P85)	Conductivity	µs/cm	In situ	Quarterly	<i>Not scheduled for sampling during this period</i>
	pH	pH	In situ		
	SWL	mbtoc	In situ		
	Bicarbonate	mg/L	Lab Analysis		
	Calcium	mg/L	Lab Analysis		
	Carbonate	mg/L	Lab Analysis		
	Chloride	mg/L	Lab Analysis		
	Magnesium	mg/L	Lab Analysis		
	Potassium	mg/L	Lab Analysis		
	Sodium	mg/L	Lab Analysis		
	Sulfate	mg/L	Lab Analysis		
39 (P88)	Conductivity	µs/cm	In situ	Quarterly	<i>Not scheduled for sampling during this period</i>
	pH	pH	In situ		
	SWL	mbtoc	In situ		
	Bicarbonate	mg/L	Lab Analysis		
	Calcium	mg/L	Lab Analysis		
	Carbonate	mg/L	Lab Analysis		
	Chloride	mg/L	Lab Analysis		
	Magnesium	mg/L	Lab Analysis		
	Potassium	mg/L	Lab Analysis		
	Sodium	mg/L	Lab Analysis		
	Sulfate	mg/L	Lab Analysis		
40 (P89)	Conductivity	µs/cm	In situ	Quarterly	<i>Not scheduled for sampling during this period</i>
	pH	pH	In situ		
	SWL	mbtoc	In situ		
	Bicarbonate	mg/L	Lab Analysis		
	Calcium	mg/L	Lab Analysis		
	Carbonate	mg/L	Lab Analysis		
	Chloride	mg/L	Lab Analysis		
	Magnesium	mg/L	Lab Analysis		

	Potassium	mg/L	Lab Analysis		
	Sodium	mg/L	Lab Analysis		
	Sulphate	mg/L	Lab Analysis		
43 (SD9)	Conductivity	µs/cm	In situ	Upon discharge (within 12 hours)	<i>No discharge occurred during sampling period (SD9)</i>
	TOC	mg/L	Lab Analysis		
44 (KCTOP)	Conductivity	µs/cm	In situ	In the event of flow during the quarter & after each wet weather discharge from points 11, 13, 18,27,43	<i>No flow recorded during discharge of EPL 43</i>
	TOC	mg/L	Lab Analysis		
	Oil & Grease	mg/L	Lab Analysis		
	pH	pH	In situ		
	TSS	mg/L	Lab Analysis		
43 (SD9)	Conductivity	µs/cm	In situ	Upon discharge (within 12 hours)	<i>No discharge occurred during sampling period (SD10)</i>
	TOC	mg/L	Lab Analysis		

Table 2 - Pollutant Limits Apply (Water)

EPL ID	Pollutant	Units of Measure	Sample Method	Monitoring Frequency	No. of Samples for the Month	Date Sampled	Date Obtained	Min Value	Mean Value	Max or Only Value	EPL Limit	Exceedance (Yes/No)	Comments (Mine Site Sample ID)	
11	TSS	mg/L	Lab Analysis	Upon discharge	0						50	NA	SD4	
	Oil & Grease	mg/L	Lab Analysis		0						<i>No discharge occurred during sampling period</i>	10		NA
	pH	pH	In situ		0						6.5-8.5	NA		
13	TSS	mg/L	Lab Analysis	Upon discharge	0						50	NA	SD2	
	Oil & Grease	mg/L	Lab Analysis		0						<i>No discharge occurred during sampling period</i>	10		NA
	pH	pH	In situ		0						6.5-8.5	NA		
18	TSS	mg/L	Lab Analysis	Upon discharge	0						50	NA	SD7	
	Oil & Grease	mg/L	Lab Analysis		0						<i>No discharge occurred during sampling period</i>	10		NA
	pH	pH	In situ		0						6.5-8.5	NA		
24	TDS	mg/L	Lab Analysis	Upon discharge	0						350	NA	NR1	
	pH	pH	In situ		0						<i>Namoi discharge point – Not constructed or currently utilised.</i>	6.5-8.5		NA
27	TSS	mg/L	Lab Analysis	Upon discharge	0						50	NA	SD8	
	Oil & Grease	mg/L	Lab Analysis		0						<i>No discharge occurred during sampling period</i>	10		NA
	pH	pH	In situ		0						6.5-8.5	NA		

EPL ID	Pollutant	Units of Measure	Sample Method	Monitoring Frequency	No. of Samples for the Month	Date Sampled	Date Obtained	Min Value	Mean Value	Max or Only Value	EPL Limit	Exceedance (Yes/No)	Comments (Mine Site Sample ID)	
43	TSS	mg/L	Lab Analysis	Upon discharge	0						50	NA	SD9	
	Oil & Grease	mg/L	Lab Analysis		0						<i>No discharge occurred during sampling period</i>	10		NA
	pH	pH	In situ		0						6.5-8.5	NA		
45	TSS	mg/L	Lab Analysis	Upon discharge	0						50	NA	SD10	
	Oil & Grease	mg/L	Lab Analysis		0						<i>No discharge occurred during sampling period</i>	10		NA
	pH	pH	In situ		0						6.5-8.5	NA		

Table 3 – Quarterly Attended Noise Monitoring Results Summary Table

EPL ID	Date	Measured Levels LA eq (15 min) Day	Measured Levels LA eq (15 min) Evening	Measured Levels LA eq (15 min) Night	Measured Levels LA1 (1 min) Night	Limit (s)	Measurement	Standard Weather			Date Obtained
							Periods	Day	Evening	Night	
N5 ¹	Noise monitoring not scheduled in January 2026. Next scheduled sampling is for March 2026.										
N6											
N8 ¹											
N9 ¹											

I/A = Inaudible, N/M = Not Measurable

Note 1: Property is owned by Narrabri Coal Operations. Noise limits contained in Conditions 1-3, Schedule 4 of PA 08_0144 Mod 2 and the identical limits contained in condition L3 of Environment Protection Licence No 12789 are not applicable.

Note 2: Evening and Night monitoring conducted on this date, Day monitoring conducted during the following day period

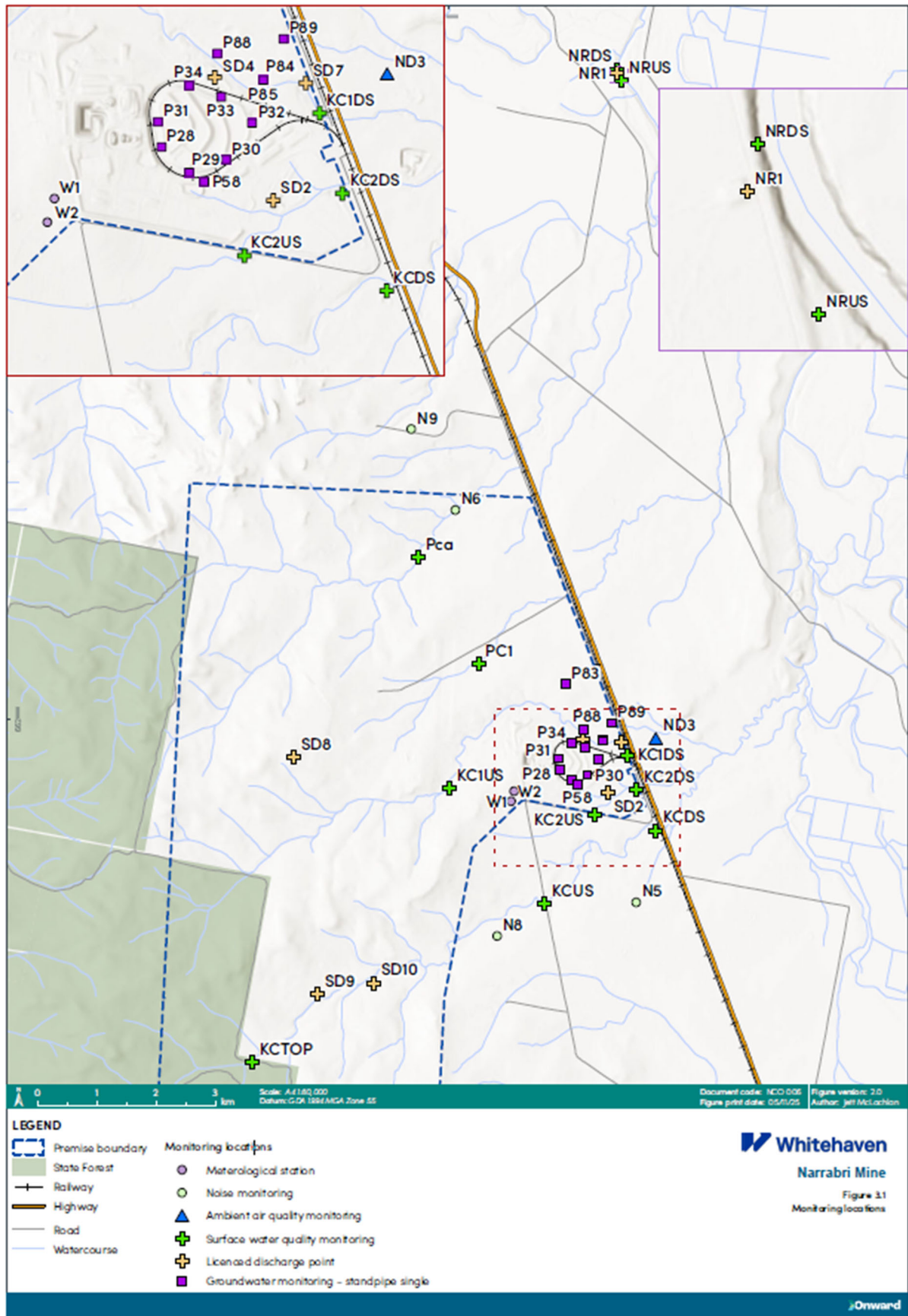


Figure 1 – EPL 12789 Monitoring Locations

NARRABRI MINE – MONTHLY MONITORING SUMMARY

Site Information

EPL No: 12789

EPA Website Link: <http://www.epa.nsw.gov.au/prpoeoapp/ViewPOEOLicence.aspx?DOCID=106922&SYSUID=1&LICID=12789>

Licensee: Narrabri Coal Operations Pty Ltd

Licensee Address: Narrabri Mine, 10 Kurrajong Creek Road, BAAN BAA NSW 2390

EPL Monitoring Points: See Figure 1 below

Sampling Period: February 2026

Obtained Date: 28/02/2026

Publication Date: 23/03/2026

Table 1 – No Pollutant Limits Apply

EPL ID	Pollutant	Units of Measure	Sample Method	Monitoring Frequency	No. of Samples for the Month	Dates Sampled	Date Obtained	Min Value	Mean Value	Median Value	Max or Only Value
ND3	Deposited Matter	g/m ² /month	Lab Analysis	Once a month (min. 4 weeks)	1	6/2/2026	28/2/2026	NA	NA	NA	0.6
11 (SD4)	Conductivity	µs/cm	In situ	Upon discharge (within 12 hours)	<i>No discharge occurred during sampling period (SD4)</i>						
	TOC	mg/L	Lab Analysis								
13 (SD2)	Conductivity	µs/cm	In situ	Upon discharge (within 12 hours)	<i>No discharge occurred during sampling period (SD2)</i>						
	TOC	mg/L	Lab Analysis								
	TOC	mg/L	Lab Analysis								
14 (KC1US)	Conductivity	µs/cm	In situ	In the event of flow during the quarter & after each wet weather discharge from points 11, 13, 18,27, 43	<i>No flow recorded during sampling period of EPL 43</i>						
	TOC	mg/L	Lab Analysis								
	Oil & Grease	mg/L	Lab Analysis								
	pH	pH	In situ								
	TSS	mg/L	Lab Analysis								
15 (KC1DS)	Conductivity	µs/cm	In situ	In the event of flow during the quarter & after each wet weather discharge from points 11, 13, 18,27, 43	<i>No flow recorded during sampling period of EPL 43</i>						
	TOC	mg/L	Lab Analysis								
	Oil & Grease	mg/L	Lab Analysis								
	pH	pH	In situ								
	TSS	mg/L	Lab Analysis								
16 (KC2US)	Conductivity	µs/cm	In situ	In the event of flow during the quarter & after each wet weather discharge from points 11, 13, 18,27, 43	<i>No flow recorded during sampling period of EPL 43</i>						
	TOC	mg/L	Lab Analysis								
	Oil & Grease	mg/L	Lab Analysis								
	pH	pH	In situ								
	TSS	mg/L	Lab Analysis								
17	Conductivity	µs/cm	In situ		<i>No flow recorded during sampling period of EPL 43</i>						

EPL ID	Pollutant	Units of Measure	Sample Method	Monitoring Frequency	No. of Samples for the Month	Dates Sampled	Date Obtained	Min Value	Mean Value	Median Value	Max or Only Value
(KC2DS)	TOC	mg/L	Lab Analysis	In the event of flow during the quarter & after each wet weather discharge from points 11, 13, 18,27,43							
	Oil & Grease	mg/L	Lab Analysis								
	pH	pH	In situ								
	TSS	mg/L	Lab Analysis								
18 (SD7)	Conductivity	µs/cm	In Situ	Upon discharge (within 12 hours)							<i>No discharge occurred during sampling period (SD7)</i>
	TOC	mg/L	Lab Analysis								
19 (KCUS)	Conductivity	µs/cm	In situ	In the event of flow during the quarter & after each wet weather discharge from points 11, 13, 18,27,43							<i>No flow recorded during sampling period of EPL 43</i>
	TOC	mg/L	Lab Analysis								
	Oil & Grease	mg/L	Lab Analysis								
	pH	pH	In situ								
	TSS	mg/L	Lab Analysis								
20 (KCDS)	Conductivity	µs/cm	In situ	In the event of flow during the quarter & after each wet weather discharge from points 11, 13, 18,27,43							<i>No flow recorded during discharge of EPL 43</i>
	TOC	mg/L	Lab Analysis								
	Oil & Grease	mg/L	Lab Analysis								
	pH	pH	In situ								
	TSS	mg/L	Lab Analysis								
21 (PCa)	Conductivity	µs/cm	In situ	In the event of flow during the quarter & after each wet weather discharge from points 11, 13, 18,27,43							<i>No flow recorded during sampling period</i>
	TOC	mg/L	Lab Analysis								
	Oil & Grease	mg/L	Lab Analysis								
	pH	pH	In situ								
	TSS	mg/L	Lab Analysis								
22 (PC1)	Conductivity	µs/cm	In situ	In the event of flow during the							<i>No flow recorded during sampling period</i>
	TOC	mg/L	Lab Analysis								

EPL ID	Pollutant	Units of Measure	Sample Method	Monitoring Frequency	No. of Samples for the Month	Dates Sampled	Date Obtained	Min Value	Mean Value	Median Value	Max or Only Value
	Oil & Grease	mg/L	Lab Analysis	quarter & after each wet weather discharge from points 11, 13, 18,27,43							
	pH	pH	In situ								
	TSS	mg/L	Lab Analysis								
24 (NR1)	pH	pH	In situ	Upon Discharge (within 4 hrs)	<i>Namoi discharge point – Not constructed or currently utilised (NR1)</i>						
	TDS	mg/L	Lab Analysis								
25 (NRUS)	pH	pH	In situ	Upon Discharge (within 4 hrs)	<i>Namoi discharge point – Not constructed or currently utilised (NRUS)</i>						
	TDS	mg/L	Lab Analysis								
26 (NRDS)	pH	pH	In situ	Upon Discharge (within 4 hrs)	<i>Namoi discharge point – Not constructed or currently utilised (NRDS)</i>						
	TDS	mg/L	Lab Analysis								
28 (P28)	Conductivity	µs/cm	In situ	Quarterly	<i>Not scheduled for sampling during this period</i>						
	pH	pH	In situ								
	SWL	mbtoc	In situ								
	Bicarbonate	mg/L	Lab Analysis								
	Calcium	mg/L	Lab Analysis								
	Carbonate	mg/L	Lab Analysis								
	Chloride	mg/L	Lab Analysis								
	Magnesium	mg/L	Lab Analysis								
	Potassium	mg/L	Lab Analysis								
	Sodium	mg/L	Lab Analysis								
	Sulphate	mg/L	Lab Analysis								
29 (P29)	Conductivity	µs/cm	In situ	Quarterly	1	6/2/2026	18/2/2026	NA	NA	NA	19260
	pH	pH	In situ		1	6/2/2026	18/2/2026	NA	NA	NA	7.1
	SWL	mbtoc	In situ		1	6/2/2026	18/2/2026	NA	NA	NA	4.36
	Bicarbonate	mg/L	Lab Analysis		1	6/2/2026	18/2/2026	NA	NA	NA	669
	Calcium	mg/L	Lab Analysis		1	6/2/2026	18/2/2026	NA	NA	NA	218
	Carbonate	mg/L	Lab Analysis		1	6/2/2026	18/2/2026	NA	NA	NA	< 1

EPL ID	Pollutant	Units of Measure	Sample Method	Monitoring Frequency	No. of Samples for the Month	Dates Sampled	Date Obtained	Min Value	Mean Value	Median Value	Max or Only Value
	Chloride	mg/L	Lab Analysis		1	6/2/2026	18/2/2026	NA	NA	NA	6750
	Magnesium	mg/L	Lab Analysis		1	6/2/2026	18/2/2026	NA	NA	NA	446
	Potassium	mg/L	Lab Analysis		1	6/2/2026	18/2/2026	NA	NA	NA	7
	Sodium	mg/L	Lab Analysis		1	6/2/2026	18/2/2026	NA	NA	NA	4200
	Sulphate	mg/L	Lab Analysis		1	6/2/2026	18/2/2026	NA	NA	NA	957
30 (P30)	Conductivity	µs/cm	In situ	Quarterly	1	6/2/2026	18/2/2026	NA	NA	NA	14910
	pH	pH	In situ		1	6/2/2026	18/2/2026	NA	NA	NA	6.92
	SWL	mbtoc	In situ		1	6/2/2026	18/2/2026	NA	NA	NA	10.74
	Bicarbonate	mg/L	Lab Analysis		1	6/2/2026	18/2/2026	NA	NA	NA	892
	Calcium	mg/L	Lab Analysis		1	6/2/2026	18/2/2026	NA	NA	NA	156
	Carbonate	mg/L	Lab Analysis		1	6/2/2026	18/2/2026	NA	NA	NA	< 1
	Chloride	mg/L	Lab Analysis		1	6/2/2026	18/2/2026	NA	NA	NA	5180
	Magnesium	mg/L	Lab Analysis		1	6/2/2026	18/2/2026	NA	NA	NA	357
	Potassium	mg/L	Lab Analysis		1	6/2/2026	18/2/2026	NA	NA	NA	17
	Sodium	mg/L	Lab Analysis		1	6/2/2026	18/2/2026	NA	NA	NA	3090
	Sulphate	mg/L	Lab Analysis		1	6/2/2026	18/2/2026	NA	NA	NA	1020
31 (P31)	Conductivity	µs/cm	In situ	Quarterly	1	6/2/2026	18/2/2026	NA	NA	NA	6230
	pH	pH	In situ		1	6/2/2026	18/2/2026	NA	NA	NA	7.08
	SWL	mbtoc	In situ		1	6/2/2026	18/2/2026	NA	NA	NA	16.25
	Bicarbonate	mg/L	Lab Analysis		1	6/2/2026	18/2/2026	NA	NA	NA	870
	Calcium	mg/L	Lab Analysis		1	6/2/2026	18/2/2026	NA	NA	NA	107
	Carbonate	mg/L	Lab Analysis		1	6/2/2026	18/2/2026	NA	NA	NA	< 1
	Chloride	mg/L	Lab Analysis		1	6/2/2026	18/2/2026	NA	NA	NA	1640
	Magnesium	mg/L	Lab Analysis		1	6/2/2026	18/2/2026	NA	NA	NA	171
	Potassium	mg/L	Lab Analysis		1	6/2/2026	18/2/2026	NA	NA	NA	16
	Sodium	mg/L	Lab Analysis		1	6/2/2026	18/2/2026	NA	NA	NA	1270
	Sulphate	mg/L	Lab Analysis		1	6/2/2026	18/2/2026	NA	NA	NA	342

EPL ID	Pollutant	Units of Measure	Sample Method	Monitoring Frequency	No. of Samples for the Month	Dates Sampled	Date Obtained	Min Value	Mean Value	Median Value	Max or Only Value
32 (P32)	Conductivity	µs/cm	In situ	Quarterly	1	6/2/2026	18/2/2026	NA	NA	NA	3920
	pH	pH	In situ		1	6/2/2026	18/2/2026	NA	NA	NA	7.42
	SWL	mbtoc	In situ		1	6/2/2026	18/2/2026	NA	NA	NA	6.7
	Bicarbonate	mg/L	Lab Analysis		1	6/2/2026	18/2/2026	NA	NA	NA	967
	Calcium	mg/L	Lab Analysis		1	6/2/2026	18/2/2026	NA	NA	NA	5
	Carbonate	mg/L	Lab Analysis		1	6/2/2026	18/2/2026	NA	NA	NA	21
	Chloride	mg/L	Lab Analysis		1	6/2/2026	18/2/2026	NA	NA	NA	708
	Magnesium	mg/L	Lab Analysis		1	6/2/2026	18/2/2026	NA	NA	NA	22
	Potassium	mg/L	Lab Analysis		1	6/2/2026	18/2/2026	NA	NA	NA	2
	Sodium	mg/L	Lab Analysis		1	6/2/2026	18/2/2026	NA	NA	NA	1030
	Sulphate	mg/L	Lab Analysis		1	6/2/2026	18/2/2026	NA	NA	NA	279
33 (P33)	Conductivity	µs/cm	In situ	Quarterly	1	6/2/2026	18/2/2026	NA	NA	NA	21900
	pH	pH	In situ		1	6/2/2026	18/2/2026	NA	NA	NA	7.12
	SWL	mbtoc	In situ		1	6/2/2026	18/2/2026	NA	NA	NA	12.99
	Bicarbonate	mg/L	Lab Analysis		1	6/2/2026	18/2/2026	NA	NA	NA	682
	Calcium	mg/L	Lab Analysis		1	6/2/2026	18/2/2026	NA	NA	NA	208
	Carbonate	mg/L	Lab Analysis		1	6/2/2026	18/2/2026	NA	NA	NA	< 1
	Chloride	mg/L	Lab Analysis		1	6/2/2026	18/2/2026	NA	NA	NA	8020
	Magnesium	mg/L	Lab Analysis		1	6/2/2026	18/2/2026	NA	NA	NA	580
	Potassium	mg/L	Lab Analysis		1	6/2/2026	18/2/2026	NA	NA	NA	22
	Sodium	mg/L	Lab Analysis		1	6/2/2026	18/2/2026	NA	NA	NA	5310
	Sulphate	mg/L	Lab Analysis		1	6/2/2026	18/2/2026	NA	NA	NA	1840
34 (P34)	Conductivity	µs/cm	In situ	Quarterly	<i>Not scheduled for sampling during this period</i>						
	pH	pH	In situ								
	SWL	mbtoc	In situ								
	Bicarbonate	mg/L	Lab Analysis								
	Calcium	mg/L	Lab Analysis								
	Carbonate	mg/L	Lab Analysis								

EPL ID	Pollutant	Units of Measure	Sample Method	Monitoring Frequency	No. of Samples for the Month	Dates Sampled	Date Obtained	Min Value	Mean Value	Median Value	Max or Only Value
	Chloride	mg/L	Lab Analysis								
	Magnesium	mg/L	Lab Analysis								
	Potassium	mg/L	Lab Analysis								
	Sodium	mg/L	Lab Analysis								
	Sulphate	mg/L	Lab Analysis								
35 (P58)	Conductivity	µs/cm	In situ	Quarterly	1	6/2/2026	18/2/2026	NA	NA	NA	11050
	pH	pH	In situ		1	6/2/2026	18/2/2026	NA	NA	NA	6.86
	SWL	mbtoc	In situ		1	6/2/2026	18/2/2026	NA	NA	NA	17.34
	Bicarbonate	mg/L	Lab Analysis		1	6/2/2026	18/2/2026	NA	NA	NA	4720
	Calcium	mg/L	Lab Analysis		1	6/2/2026	18/2/2026	NA	NA	NA	32
	Carbonate	mg/L	Lab Analysis		1	6/2/2026	18/2/2026	NA	NA	NA	< 1
	Chloride	mg/L	Lab Analysis		1	6/2/2026	18/2/2026	NA	NA	NA	1790
	Magnesium	mg/L	Lab Analysis		1	6/2/2026	18/2/2026	NA	NA	NA	63
	Potassium	mg/L	Lab Analysis		1	6/2/2026	18/2/2026	NA	NA	NA	76
	Sodium	mg/L	Lab Analysis		1	6/2/2026	18/2/2026	NA	NA	NA	2730
	Sulfate	mg/L	Lab Analysis		1	6/2/2026	18/2/2026	NA	NA	NA	160
36 (P83)	Conductivity	µs/cm	In situ	Quarterly							
	pH	pH	In situ								
	SWL	mbtoc	In situ								
	Bicarbonate	mg/L	Lab Analysis								
	Calcium	mg/L	Lab Analysis								
	Carbonate	mg/L	Lab Analysis								
	Chloride	mg/L	Lab Analysis								
	Magnesium	mg/L	Lab Analysis								
	Potassium	mg/L	Lab Analysis								
	Sodium	mg/L	Lab Analysis								
Sulphate	mg/L	Lab Analysis									
37 (P84)	Conductivity	µs/cm	In situ	Quarterly	1	5/2/2026	18/2/2026	NA	NA	NA	18900
	pH	pH	In situ		1	5/2/2026	18/2/2026	NA	NA	NA	6.71

EPL ID	Pollutant	Units of Measure	Sample Method	Monitoring Frequency	No. of Samples for the Month	Dates Sampled	Date Obtained	Min Value	Mean Value	Median Value	Max or Only Value
	SWL	mbtoc	In situ		1	5/2/2026	18/2/2026	NA	NA	NA	13.43
	Bicarbonate	mg/L	Lab Analysis		1	5/2/2026	18/2/2026	NA	NA	NA	2680
	Calcium	mg/L	Lab Analysis		1	5/2/2026	18/2/2026	NA	NA	NA	121
	Carbonate	mg/L	Lab Analysis		1	5/2/2026	18/2/2026	NA	NA	NA	< 1
	Chloride	mg/L	Lab Analysis		1	5/2/2026	18/2/2026	NA	NA	NA	6320
	Magnesium	mg/L	Lab Analysis		1	5/2/2026	18/2/2026	NA	NA	NA	459
	Potassium	mg/L	Lab Analysis		1	5/2/2026	18/2/2026	NA	NA	NA	42
	Sodium	mg/L	Lab Analysis		1	5/2/2026	18/2/2026	NA	NA	NA	5170
	Sulphate	mg/L	Lab Analysis		1	5/2/2026	18/2/2026	NA	NA	NA	1090
38 (P85)	Conductivity	µs/cm	In situ	Quarterly	<i>Not scheduled for sampling during this period</i>						
	pH	pH	In situ								
	SWL	mbtoc	In situ								
	Bicarbonate	mg/L	Lab Analysis								
	Calcium	mg/L	Lab Analysis								
	Carbonate	mg/L	Lab Analysis								
	Chloride	mg/L	Lab Analysis								
	Magnesium	mg/L	Lab Analysis								
	Potassium	mg/L	Lab Analysis								
	Sodium	mg/L	Lab Analysis								
	Sulfate	mg/L	Lab Analysis								
39 (P88)	Conductivity	µs/cm	In situ	Quarterly	<i>Not scheduled for sampling during this period</i>						
	pH	pH	In situ								
	SWL	mbtoc	In situ								
	Bicarbonate	mg/L	Lab Analysis								
	Calcium	mg/L	Lab Analysis								
	Carbonate	mg/L	Lab Analysis								
	Chloride	mg/L	Lab Analysis								
	Magnesium	mg/L	Lab Analysis								
	Potassium	mg/L	Lab Analysis								

EPL ID	Pollutant	Units of Measure	Sample Method	Monitoring Frequency	No. of Samples for the Month	Dates Sampled	Date Obtained	Min Value	Mean Value	Median Value	Max or Only Value
	Sodium	mg/L	Lab Analysis								
	Sulfate	mg/L	Lab Analysis								
40 (P89)	Conductivity	µs/cm	In situ	Quarterly	<i>Not scheduled for sampling during this period</i>						
	pH	pH	In situ								
	SWL	mbtoc	In situ								
	Bicarbonate	mg/L	Lab Analysis								
	Calcium	mg/L	Lab Analysis								
	Carbonate	mg/L	Lab Analysis								
	Chloride	mg/L	Lab Analysis								
	Magnesium	mg/L	Lab Analysis								
	Potassium	mg/L	Lab Analysis								
	Sodium	mg/L	Lab Analysis								
	Sulphate	mg/L	Lab Analysis								
43 (SD9)	Conductivity	µs/cm	In situ	Upon discharge (within 12 hours)	<i>No discharge occurred during sampling period (SD9)</i>						
	TOC	mg/L	Lab Analysis								
44 (KCTOP)	Conductivity	µs/cm	In situ	In the event of flow during the quarter & after each wet weather discharge from points 11, 13, 18,27,43	<i>No flow recorded during discharge of EPL 43</i>						
	TOC	mg/L	Lab Analysis								
	Oil & Grease	mg/L	Lab Analysis								
	pH	pH	In situ								
	TSS	mg/L	Lab Analysis								
43 (SD9)	Conductivity	µs/cm	In situ	Upon discharge (within 12 hours)	<i>No discharge occurred during sampling period (SD10)</i>						
	TOC	mg/L	Lab Analysis								

Table 2 - Pollutant Limits Apply (Water)

EPL ID	Pollutant	Units of Measure	Sample Method	Monitoring Frequency	No. of Samples for the Month	Date Sampled	Date Obtained	Min Value	Mean Value	Max or Only Value	EPL Limit	Exceedance (Yes/No)	Comments (Mine Site Sample ID)	
11	TSS	mg/L	Lab Analysis	Upon discharge	0						50	NA	SD4	
	Oil & Grease	mg/L	Lab Analysis		0						<i>No discharge occurred during sampling period</i>	10		NA
	pH	pH	In situ		0						6.5-8.5	NA		
13	TSS	mg/L	Lab Analysis	Upon discharge	0						50	NA	SD2	
	Oil & Grease	mg/L	Lab Analysis		0						<i>No discharge occurred during sampling period</i>	10		NA
	pH	pH	In situ		0						6.5-8.5	NA		
18	TSS	mg/L	Lab Analysis	Upon discharge	0						50	NA	SD7	
	Oil & Grease	mg/L	Lab Analysis		0						<i>No discharge occurred during sampling period</i>	10		NA
	pH	pH	In situ		0						6.5-8.5	NA		
24	TDS	mg/L	Lab Analysis	Upon discharge	0						350	NA	NR1	
	pH	pH	In situ		0						<i>Namoi discharge point – Not constructed or currently utilised.</i>	6.5-8.5		NA
27	TSS	mg/L	Lab Analysis	Upon discharge	0						50	NA	SD8	
	Oil & Grease	mg/L	Lab Analysis		0						<i>No discharge occurred during sampling period</i>	10		NA
	pH	pH	In situ		0						6.5-8.5	NA		

EPL ID	Pollutant	Units of Measure	Sample Method	Monitoring Frequency	No. of Samples for the Month	Date Sampled	Date Obtained	Min Value	Mean Value	Max or Only Value	EPL Limit	Exceedance (Yes/No)	Comments (Mine Site Sample ID)
43	TSS	mg/L	Lab Analysis	Upon discharge	0	<i>No discharge occurred during sampling period</i>					50	NA	SD9
	Oil & Grease	mg/L	Lab Analysis		0						10	NA	
	pH	pH	In situ		0						6.5-8.5	NA	
45	TSS	mg/L	Lab Analysis	Upon discharge	0	<i>No discharge occurred during sampling period</i>					50	NA	SD10
	Oil & Grease	mg/L	Lab Analysis		0						10	NA	
	pH	pH	In situ		0						6.5-8.5	NA	

Table 3 – Quarterly Attended Noise Monitoring Results Summary Table

EPL ID	Date	Measured Levels LA eq (15 min) Day	Measured Levels LA eq (15 min) Evening	Measured Levels LA eq (15 min) Night	Measured Levels LA1 (1 min) Night	Limit (s)	Measurement	Standard Weather			Date Obtained
							Periods	Day	Evening	Night	
N5 ¹	Noise monitoring not scheduled in February 2026. Next scheduled sampling is for March 2026.										
N6											
N8 ¹											
N9 ¹											

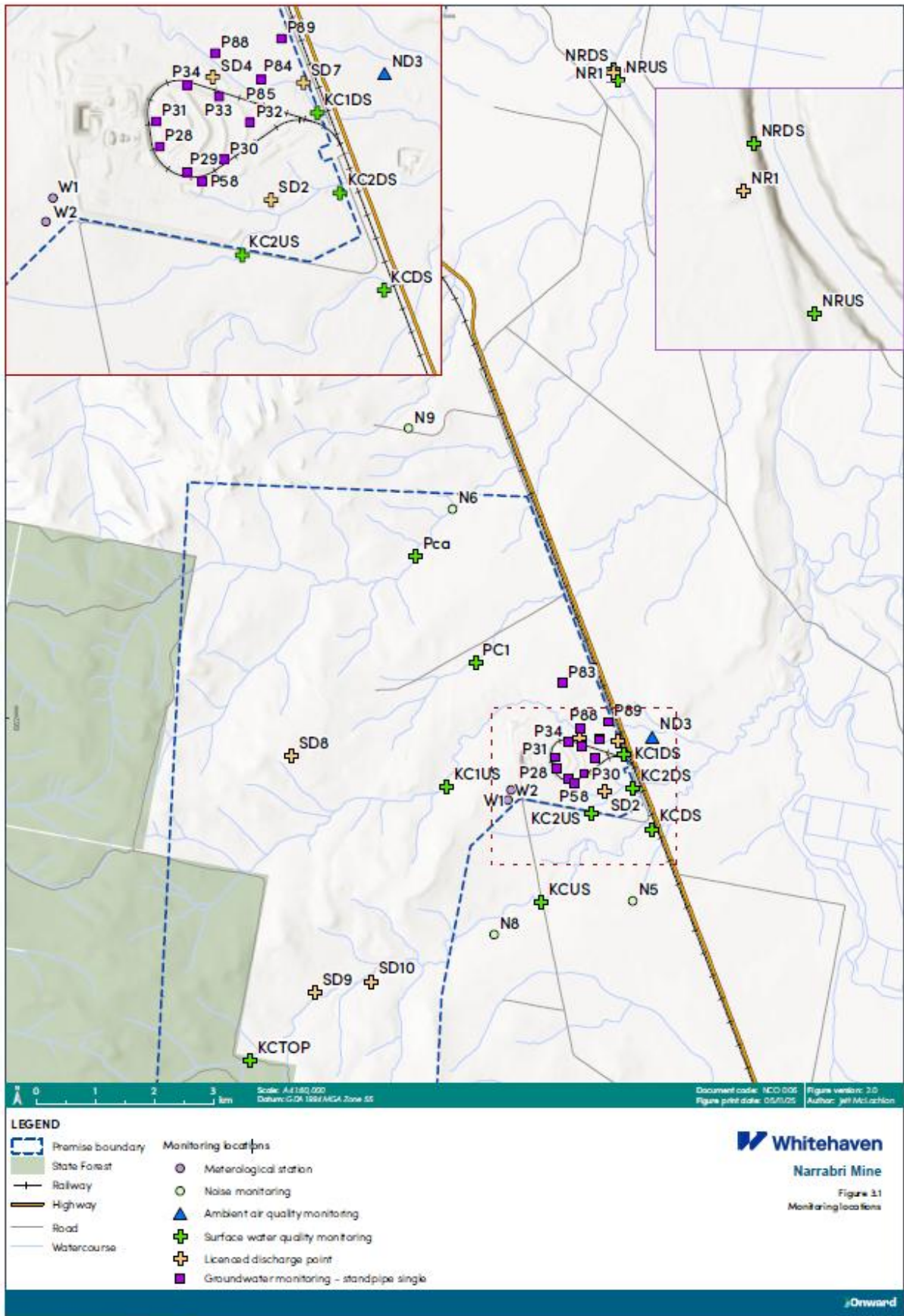


Figure 1 – EPL 12789 Monitoring Locations

NARRABRI MINE – MONTHLY MONITORING SUMMARY

Site Information

EPL No: 12789

EPA Website Link: <http://www.epa.nsw.gov.au/prpoeoapp/ViewPOEOLicence.aspx?DOCID=106922&SYSUID=1&LICID=12789>

Licensee: Narrabri Coal Operations Pty Ltd

Licensee Address: Narrabri Mine, 10 Kurrajong Creek Road, BAAN BAA NSW 2390

EPL Monitoring Points: See Figure 1 below

Sampling Period: March 2026

Obtained Date: 13/04/2026

Publication Date: 15/04/2026

Table 1 – No Pollutant Limits Apply

EPL ID	Pollutant	Units of Measure	Sample Method	Monitoring Frequency	No. of Samples for the Month	Dates Sampled	Date Obtained	Min Value	Mean Value	Median Value	Max or Only Value
ND3	Deposited Matter	g/m ² /month	Lab Analysis	Once a month (min. 4 weeks)	1	9/3/2026	19/3/2026	NA	NA	NA	0.4
11 (SD4)	Conductivity	µs/cm	In situ	Upon discharge (within 12 hours)	<i>No discharge occurred during sampling period (SD4)</i>						
	TOC	mg/L	Lab Analysis								
13 (SD2)	Conductivity	µs/cm	In situ	Upon discharge (within 12 hours)	<i>No discharge occurred during sampling period (SD2)</i>						
	TOC	mg/L	Lab Analysis								
	TOC	mg/L	Lab Analysis								
14 (KC1US)	Conductivity	µs/cm	In situ	In the event of flow during the quarter & after each wet weather discharge from points 11, 13, 18,27, 43	<i>No flow recorded during sampling period of EPL 43</i>						
	TOC	mg/L	Lab Analysis								
	Oil & Grease	mg/L	Lab Analysis								
	pH	pH	In situ								
	TSS	mg/L	Lab Analysis								
15 (KC1DS)	Conductivity	µs/cm	In situ	In the event of flow during the quarter & after each wet weather discharge from points 11, 13, 18,27, 43	<i>No flow recorded during sampling period of EPL 43</i>						
	TOC	mg/L	Lab Analysis								
	Oil & Grease	mg/L	Lab Analysis								
	pH	pH	In situ								
	TSS	mg/L	Lab Analysis								
16 (KC2US)	Conductivity	µs/cm	In situ	In the event of flow during the quarter & after each wet weather discharge from points 11, 13, 18,27, 43	<i>No flow recorded during sampling period of EPL 43</i>						
	TOC	mg/L	Lab Analysis								
	Oil & Grease	mg/L	Lab Analysis								
	pH	pH	In situ								
	TSS	mg/L	Lab Analysis								
17	Conductivity	µs/cm	In situ		<i>No flow recorded during sampling period of EPL 43</i>						

EPL ID	Pollutant	Units of Measure	Sample Method	Monitoring Frequency	No. of Samples for the Month	Dates Sampled	Date Obtained	Min Value	Mean Value	Median Value	Max or Only Value
(KC2DS)	TOC	mg/L	Lab Analysis	In the event of flow during the quarter & after each wet weather discharge from points 11, 13, 18,27,43							
	Oil & Grease	mg/L	Lab Analysis								
	pH	pH	In situ								
	TSS	mg/L	Lab Analysis								
18 (SD7)	Conductivity	µs/cm	In Situ	Upon discharge (within 12 hours)							<i>No discharge occurred during sampling period (SD7)</i>
	TOC	mg/L	Lab Analysis								
19 (KCUS)	Conductivity	µs/cm	In situ	In the event of flow during the quarter & after each wet weather discharge from points 11, 13, 18,27,43							<i>No flow recorded during sampling period of EPL 43</i>
	TOC	mg/L	Lab Analysis								
	Oil & Grease	mg/L	Lab Analysis								
	pH	pH	In situ								
	TSS	mg/L	Lab Analysis								
20 (KCDS)	Conductivity	µs/cm	In situ	In the event of flow during the quarter & after each wet weather discharge from points 11, 13, 18,27,43							<i>No flow recorded during discharge of EPL 43</i>
	TOC	mg/L	Lab Analysis								
	Oil & Grease	mg/L	Lab Analysis								
	pH	pH	In situ								
	TSS	mg/L	Lab Analysis								
21 (PCa)	Conductivity	µs/cm	In situ	In the event of flow during the quarter & after each wet weather discharge from points 11, 13, 18,27,43							<i>No flow recorded during sampling period</i>
	TOC	mg/L	Lab Analysis								
	Oil & Grease	mg/L	Lab Analysis								
	pH	pH	In situ								
	TSS	mg/L	Lab Analysis								
22 (PC1)	Conductivity	µs/cm	In situ	In the event of flow during the							<i>No flow recorded during sampling period</i>
	TOC	mg/L	Lab Analysis								

EPL ID	Pollutant	Units of Measure	Sample Method	Monitoring Frequency	No. of Samples for the Month	Dates Sampled	Date Obtained	Min Value	Mean Value	Median Value	Max or Only Value
	Oil & Grease	mg/L	Lab Analysis	quarter & after each wet weather discharge from points 11, 13, 18,27,43							
	pH	pH	In situ								
	TSS	mg/L	Lab Analysis								
24 (NR1)	pH	pH	In situ	Upon Discharge (within 4 hrs)							<i>Namoi discharge point – Not constructed or currently utilised (NR1)</i>
	TDS	mg/L	Lab Analysis								
25 (NRUS)	pH	pH	In situ	Upon Discharge (within 4 hrs)							<i>Namoi discharge point – Not constructed or currently utilised (NRUS)</i>
	TDS	mg/L	Lab Analysis								
26 (NRDS)	pH	pH	In situ	Upon Discharge (within 4 hrs)							<i>Namoi discharge point – Not constructed or currently utilised (NRDS)</i>
	TDS	mg/L	Lab Analysis								
28 (P28)	Conductivity	µs/cm	In situ	Quarterly							<i>Not scheduled for sampling during this period</i>
	pH	pH	In situ								
	SWL	mbtoc	In situ								
	Bicarbonate	mg/L	Lab Analysis								
	Calcium	mg/L	Lab Analysis								
	Carbonate	mg/L	Lab Analysis								
	Chloride	mg/L	Lab Analysis								
	Magnesium	mg/L	Lab Analysis								
	Potassium	mg/L	Lab Analysis								
	Sodium	mg/L	Lab Analysis								
	Sulphate	mg/L	Lab Analysis								
29 (P29)	Conductivity	µs/cm	In situ	Quarterly							<i>Not scheduled for sampling during this period</i>
	pH	pH	In situ								
	SWL	mbtoc	In situ								
	Bicarbonate	mg/L	Lab Analysis								
	Calcium	mg/L	Lab Analysis								
	Carbonate	mg/L	Lab Analysis								
	Chloride	mg/L	Lab Analysis								

EPL ID	Pollutant	Units of Measure	Sample Method	Monitoring Frequency	No. of Samples for the Month	Dates Sampled	Date Obtained	Min Value	Mean Value	Median Value	Max or Only Value
	Magnesium	mg/L	Lab Analysis								
	Potassium	mg/L	Lab Analysis								
	Sodium	mg/L	Lab Analysis								
	Sulphate	mg/L	Lab Analysis								
30 (P30)	Conductivity	µs/cm	In situ	Quarterly							<i>Not scheduled for sampling during this period</i>
	pH	pH	In situ								
	SWL	mbtoc	In situ								
	Bicarbonate	mg/L	Lab Analysis								
	Calcium	mg/L	Lab Analysis								
	Carbonate	mg/L	Lab Analysis								
	Chloride	mg/L	Lab Analysis								
	Magnesium	mg/L	Lab Analysis								
	Potassium	mg/L	Lab Analysis								
	Sodium	mg/L	Lab Analysis								
Sulphate	mg/L	Lab Analysis									
31 (P31)	Conductivity	µs/cm	In situ	Quarterly							<i>Not scheduled for sampling during this period</i>
	pH	pH	In situ								
	SWL	mbtoc	In situ								
	Bicarbonate	mg/L	Lab Analysis								
	Calcium	mg/L	Lab Analysis								
	Carbonate	mg/L	Lab Analysis								
	Chloride	mg/L	Lab Analysis								
	Magnesium	mg/L	Lab Analysis								
	Potassium	mg/L	Lab Analysis								
	Sodium	mg/L	Lab Analysis								
	Sulphate	mg/L	Lab Analysis								
32 (P32)	Conductivity	µs/cm	In situ	Quarterly							<i>Not scheduled for sampling during this period</i>
	pH	pH	In situ								
	SWL	mbtoc	In situ								

EPL ID	Pollutant	Units of Measure	Sample Method	Monitoring Frequency	No. of Samples for the Month	Dates Sampled	Date Obtained	Min Value	Mean Value	Median Value	Max or Only Value
	Bicarbonate	mg/L	Lab Analysis								
	Calcium	mg/L	Lab Analysis								
	Carbonate	mg/L	Lab Analysis								
	Chloride	mg/L	Lab Analysis								
	Magnesium	mg/L	Lab Analysis								
	Potassium	mg/L	Lab Analysis								
	Sodium	mg/L	Lab Analysis								
	Sulphate	mg/L	Lab Analysis								
33 (P33)	Conductivity	µs/cm	In situ	Quarterly							<i>Not scheduled for sampling during this period</i>
	pH	pH	In situ								
	SWL	mbtoc	In situ								
	Bicarbonate	mg/L	Lab Analysis								
	Calcium	mg/L	Lab Analysis								
	Carbonate	mg/L	Lab Analysis								
	Chloride	mg/L	Lab Analysis								
	Magnesium	mg/L	Lab Analysis								
	Potassium	mg/L	Lab Analysis								
	Sodium	mg/L	Lab Analysis								
	Sulphate	mg/L	Lab Analysis								
34 (P34)	Conductivity	µs/cm	In situ	Quarterly							<i>Not scheduled for sampling during this period</i>
	pH	pH	In situ								
	SWL	mbtoc	In situ								
	Bicarbonate	mg/L	Lab Analysis								
	Calcium	mg/L	Lab Analysis								
	Carbonate	mg/L	Lab Analysis								
	Chloride	mg/L	Lab Analysis								
	Magnesium	mg/L	Lab Analysis								
	Potassium	mg/L	Lab Analysis								
	Sodium	mg/L	Lab Analysis								
	Sulphate	mg/L	Lab Analysis								

EPL ID	Pollutant	Units of Measure	Sample Method	Monitoring Frequency	No. of Samples for the Month	Dates Sampled	Date Obtained	Min Value	Mean Value	Median Value	Max or Only Value
35 (P58)	Conductivity	µs/cm	In situ	Quarterly							<i>Not scheduled for sampling during this period</i>
	pH	pH	In situ								
	SWL	mbtoc	In situ								
	Bicarbonate	mg/L	Lab Analysis								
	Calcium	mg/L	Lab Analysis								
	Carbonate	mg/L	Lab Analysis								
	Chloride	mg/L	Lab Analysis								
	Magnesium	mg/L	Lab Analysis								
	Potassium	mg/L	Lab Analysis								
	Sodium	mg/L	Lab Analysis								
	Sulfate	mg/L	Lab Analysis								
36 (P83)	Conductivity	µs/cm	In situ	Quarterly							<i>Not scheduled for sampling during this period</i>
	pH	pH	In situ								
	SWL	mbtoc	In situ								
	Bicarbonate	mg/L	Lab Analysis								
	Calcium	mg/L	Lab Analysis								
	Carbonate	mg/L	Lab Analysis								
	Chloride	mg/L	Lab Analysis								
	Magnesium	mg/L	Lab Analysis								
	Potassium	mg/L	Lab Analysis								
	Sodium	mg/L	Lab Analysis								
	Sulphate	mg/L	Lab Analysis								
37 (P84)	Conductivity	µs/cm	In situ	Quarterly							<i>Not scheduled for sampling during this period</i>
	pH	pH	In situ								
	SWL	mbtoc	In situ								
	Bicarbonate	mg/L	Lab Analysis								
	Calcium	mg/L	Lab Analysis								
	Carbonate	mg/L	Lab Analysis								
	Chloride	mg/L	Lab Analysis								
	Magnesium	mg/L	Lab Analysis								

EPL ID	Pollutant	Units of Measure	Sample Method	Monitoring Frequency	No. of Samples for the Month	Dates Sampled	Date Obtained	Min Value	Mean Value	Median Value	Max or Only Value
	Potassium	mg/L	Lab Analysis								
	Sodium	mg/L	Lab Analysis								
	Sulphate	mg/L	Lab Analysis								
38 (P85)	Conductivity	µs/cm	In situ	Quarterly							<i>Not scheduled for sampling during this period</i>
	pH	pH	In situ								
	SWL	mbtoc	In situ								
	Bicarbonate	mg/L	Lab Analysis								
	Calcium	mg/L	Lab Analysis								
	Carbonate	mg/L	Lab Analysis								
	Chloride	mg/L	Lab Analysis								
	Magnesium	mg/L	Lab Analysis								
	Potassium	mg/L	Lab Analysis								
	Sodium	mg/L	Lab Analysis								
Sulfate	mg/L	Lab Analysis									
39 (P88)	Conductivity	µs/cm	In situ	Quarterly							<i>Not scheduled for sampling during this period</i>
	pH	pH	In situ								
	SWL	mbtoc	In situ								
	Bicarbonate	mg/L	Lab Analysis								
	Calcium	mg/L	Lab Analysis								
	Carbonate	mg/L	Lab Analysis								
	Chloride	mg/L	Lab Analysis								
	Magnesium	mg/L	Lab Analysis								
	Potassium	mg/L	Lab Analysis								
	Sodium	mg/L	Lab Analysis								
Sulfate	mg/L	Lab Analysis									
40 (P89)	Conductivity	µs/cm	In situ	Quarterly							<i>Not scheduled for sampling during this period</i>
	pH	pH	In situ								
	SWL	mbtoc	In situ								

EPL ID	Pollutant	Units of Measure	Sample Method	Monitoring Frequency	No. of Samples for the Month	Dates Sampled	Date Obtained	Min Value	Mean Value	Median Value	Max or Only Value
	Bicarbonate	mg/L	Lab Analysis								
	Calcium	mg/L	Lab Analysis								
	Carbonate	mg/L	Lab Analysis								
	Chloride	mg/L	Lab Analysis								
	Magnesium	mg/L	Lab Analysis								
	Potassium	mg/L	Lab Analysis								
	Sodium	mg/L	Lab Analysis								
Sulphate	mg/L	Lab Analysis									
43 (SD9)	Conductivity	µs/cm	In situ	Upon discharge (within 12 hours)	<i>No discharge occurred during sampling period (SD9)</i>						
	TOC	mg/L	Lab Analysis								
44 (KCTOP)	Conductivity	µs/cm	In situ	In the event of flow during the quarter & after each wet weather discharge from points 11, 13, 18,27,43	<i>No flow recorded during discharge of EPL 43</i>						
	TOC	mg/L	Lab Analysis								
	Oil & Grease	mg/L	Lab Analysis								
	pH	pH	In situ								
	TSS	mg/L	Lab Analysis								
43 (SD9)	Conductivity	µs/cm	In situ	Upon discharge (within 12 hours)	<i>No discharge occurred during sampling period (SD10)</i>						
	TOC	mg/L	Lab Analysis								

Table 2 - Pollutant Limits Apply (Water)

EPL ID	Pollutant	Units of Measure	Sample Method	Monitoring Frequency	No. of Samples for the Month	Date Sampled	Date Obtained	Min Value	Mean Value	Max or Only Value	EPL Limit	Exceedance (Yes/No)	Comments (Mine Site Sample ID)	
11	TSS	mg/L	Lab Analysis	Upon discharge	0						50	NA	SD4	
	Oil & Grease	mg/L	Lab Analysis		0						<i>No discharge occurred during sampling period</i>	10		NA
	pH	pH	In situ		0						6.5-8.5	NA		
13	TSS	mg/L	Lab Analysis	Upon discharge	0						50	NA	SD2	
	Oil & Grease	mg/L	Lab Analysis		0						<i>No discharge occurred during sampling period</i>	10		NA
	pH	pH	In situ		0						6.5-8.5	NA		
18	TSS	mg/L	Lab Analysis	Upon discharge	0						50	NA	SD7	
	Oil & Grease	mg/L	Lab Analysis		0						<i>No discharge occurred during sampling period</i>	10		NA
	pH	pH	In situ		0						6.5-8.5	NA		
24	TDS	mg/L	Lab Analysis	Upon discharge	0						350	NA	NR1	
	pH	pH	In situ		0						<i>Namoi discharge point – Not constructed or currently utilised.</i>	6.5-8.5		NA
27	TSS	mg/L	Lab Analysis	Upon discharge	0						50	NA	SD8	
	Oil & Grease	mg/L	Lab Analysis		0						<i>No discharge occurred during sampling period</i>	10		NA
	pH	pH	In situ		0						6.5-8.5	NA		

EPL ID	Pollutant	Units of Measure	Sample Method	Monitoring Frequency	No. of Samples for the Month	Date Sampled	Date Obtained	Min Value	Mean Value	Max or Only Value	EPL Limit	Exceedance (Yes/No)	Comments (Mine Site Sample ID)
43	TSS	mg/L	Lab Analysis	Upon discharge	0	<i>No discharge occurred during sampling period</i>					50	NA	SD9
	Oil & Grease	mg/L	Lab Analysis		0						10	NA	
	pH	pH	In situ		0						6.5-8.5	NA	
45	TSS	mg/L	Lab Analysis	Upon discharge	0	<i>No discharge occurred during sampling period</i>					50	NA	SD10
	Oil & Grease	mg/L	Lab Analysis		0						10	NA	
	pH	pH	In situ		0						6.5-8.5	NA	

Table 3 – Quarterly Attended Noise Monitoring Results Summary Table

EPL	Date	Narrabri Mine Contribution, dBA				Limits	Measurement Periods	Standard Weather			Date Obtained
		Measured Levels LA eq(15 min) Day	Measured Levels LA eq(15 min) Evening	Measured Levels LA eq(15 min) Night	Measured Levels LA1(1 min) Night ⁴			Day	Evening	Night	
N5	16/03/2026 ²	I/A	<20	N/M	N/M	Day, Evening, Night – LA eq(15min) - 35 dBA Night LA1(1min) – 45 dBA LAmix – 52 dBA	Day - 1.5 hrs Evening - 0.5 hrs Night – 1hrs	N	Y	N	08/04/2026
	17/03/2026 ²	N/M	N/M	N/M	N/M			Y	Y	Y	
	18/03/2026 ²	<25	I/A	I/A	I/A			Y	Y	N	
N6	16/03/2026 ²	I/A	I/A	I/A	I/A	Day, Evening, Night – LA eq(15min) - 35 dBA Night LA1(1min) – 45 dBA LAmix – 52 dBA	Day - 1.5 hrs Evening - 0.5 hrs Night – 1hrs	N	Y	N	08/04/2026
	17/03/2026 ²	26	I/A	23	25 (25)			Y	Y	Y	
	18/03/2026 ²	26	I/A	22	29 (29)			Y	Y	Y	
N8	16/03/2026 ²	I/A	I/A	N/M	N/M	Day, Evening, Night – LA eq(15min) - 35 dBA Night LA1(1min) – 45 dBA LAmix – 52 dBA	Day - 1.5 hrs Evening - 0.5 hrs Night – 1hrs	N	Y	N	08/04/2026
	17/03/2026 ²	26	I/A	26	28 (28)			Y	Y	Y	
	18/03/2026 ²	26	I/A	26	28 (28)			Y	Y	N	
N9	16/03/2026 ²	I/A	I/A	33	34 (34)	Day, Evening, Night – LA eq(15min) - 35 dBA Night LA1(1min) – 45 dBA LAmix – 52 dBA	Day - 1.5 hrs Evening - 0.5 hrs Night – 1hrs	N	Y	N	08/04/2026
	17/03/2026 ²	30	I/A	25	29 (29)			Y	Y	Y	
	18/03/2026 ²	26	22	I/A	I/A			Y	Y	Y	

I/A = Inaudible, N/M = Not Measurable

Note 1: Property is owned by Narrabri Coal Operations. Noise limits contained in Conditions 1-3, Schedule 4 of PA 08_0144 Mod 2 and the identical limits contained in condition L3 of Environment Protection Licence No 12789 are not applicable.

Note 2: Evening and Night monitoring conducted on this date, Day monitoring conducted during the following day period.

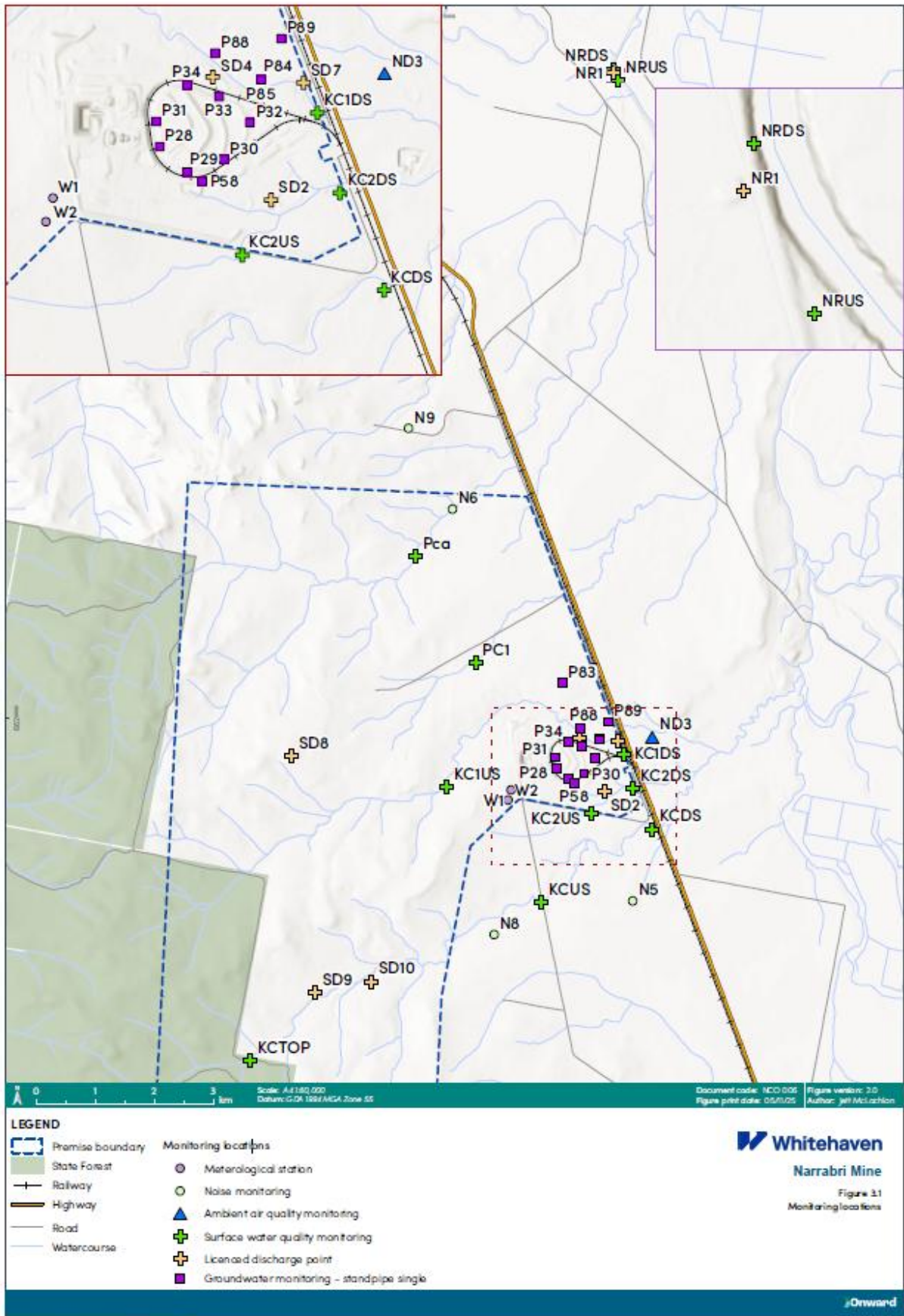


Figure 1 – EPL 12789 Monitoring Locations

NARRABRI MINE – MONTHLY MONITORING SUMMARY

Site Information

EPL No: 12789

EPA Website Link: <http://www.epa.nsw.gov.au/prpoeoapp/ViewPOEOLicence.aspx?DOCID=106922&SYSUID=1&LICID=12789>

Licensee: Narrabri Coal Operations Pty Ltd

Licensee Address: Narrabri Mine, 10 Kurrajong Creek Road, BAAN BAA NSW 2390

EPL Monitoring Points: See Figure 1 below

Sampling Period: April 2026

Obtained Date: 25/05/2026

Publication Date: 25/05/2026

Table 1 – No Pollutant Limits Apply

EPL ID	Pollutant	Units of Measure	Sample Method	Monitoring Frequency	No. of Samples for the Month	Dates Sampled	Date Obtained	Min Value	Mean Value	Median Value	Max or Only Value
ND3	Deposited Matter	g/m ² /month	Lab Analysis	Once a month (min. 4 weeks)	1	8/04/2026	17/04/2026	NA	NA	NA	0.5
11 (SD4)	Conductivity	µs/cm	In situ	Upon discharge (within 12 hours)	<i>No discharge occurred during sampling period (SD4)</i>						
	TOC	mg/L	Lab Analysis								
13 (SD2)	Conductivity	µs/cm	In situ	Upon discharge (within 12 hours)	<i>No discharge occurred during sampling period (SD2)</i>						
	TOC	mg/L	Lab Analysis								
	TOC	mg/L	Lab Analysis								
14 (KC1US)	Conductivity	µs/cm	In situ	In the event of flow during the quarter & after each wet weather discharge from points 11, 13, 18,27, 43	<i>No flow recorded during sampling period of EPL 43</i>						
	TOC	mg/L	Lab Analysis								
	Oil & Grease	mg/L	Lab Analysis								
	pH	pH	In situ								
	TSS	mg/L	Lab Analysis								
15 (KC1DS)	Conductivity	µs/cm	In situ	In the event of flow during the quarter & after each wet weather discharge from points 11, 13, 18,27, 43	<i>No flow recorded during sampling period of EPL 43</i>						
	TOC	mg/L	Lab Analysis								
	Oil & Grease	mg/L	Lab Analysis								
	pH	pH	In situ								
	TSS	mg/L	Lab Analysis								
16 (KC2US)	Conductivity	µs/cm	In situ	In the event of flow during the quarter & after each wet weather discharge from points 11, 13, 18,27, 43	<i>No flow recorded during sampling period of EPL 43</i>						
	TOC	mg/L	Lab Analysis								
	Oil & Grease	mg/L	Lab Analysis								
	pH	pH	In situ								
	TSS	mg/L	Lab Analysis								

EPL ID	Pollutant	Units of Measure	Sample Method	Monitoring Frequency	No. of Samples for the Month	Dates Sampled	Date Obtained	Min Value	Mean Value	Median Value	Max or Only Value
17 (KC2DS)	Conductivity	µs/cm	In situ	In the event of flow during the quarter & after each wet weather discharge from points 11, 13, 18,27,43							<i>No flow recorded during sampling period of EPL 43</i>
	TOC	mg/L	Lab Analysis								
	Oil & Grease	mg/L	Lab Analysis								
	pH	pH	In situ								
	TSS	mg/L	Lab Analysis								
18 (SD7)	Conductivity	µs/cm	In Situ	Upon discharge (within 12 hours)							<i>No discharge occurred during sampling period (SD7)</i>
	TOC	mg/L	Lab Analysis								
19 (KCUS)	Conductivity	µs/cm	In situ	In the event of flow during the quarter & after each wet weather discharge from points 11, 13, 18,27,43							<i>No flow recorded during sampling period of EPL 43</i>
	TOC	mg/L	Lab Analysis								
	Oil & Grease	mg/L	Lab Analysis								
	pH	pH	In situ								
	TSS	mg/L	Lab Analysis								
20 (KCDS)	Conductivity	µs/cm	In situ	In the event of flow during the quarter & after each wet weather discharge from points 11, 13, 18,27,43							<i>No flow recorded during discharge of EPL 43</i>
	TOC	mg/L	Lab Analysis								
	Oil & Grease	mg/L	Lab Analysis								
	pH	pH	In situ								
	TSS	mg/L	Lab Analysis								
21 (PCa)	Conductivity	µs/cm	In situ	In the event of flow during the quarter & after each wet weather discharge from points 11, 13, 18,27,43							<i>No flow recorded during sampling period</i>
	TOC	mg/L	Lab Analysis								
	Oil & Grease	mg/L	Lab Analysis								
	pH	pH	In situ								
	TSS	mg/L	Lab Analysis								
22 (PC1)	Conductivity	µs/cm	In situ	In the event of flow during the							<i>No flow recorded during sampling period</i>
	TOC	mg/L	Lab Analysis								

EPL ID	Pollutant	Units of Measure	Sample Method	Monitoring Frequency	No. of Samples for the Month	Dates Sampled	Date Obtained	Min Value	Mean Value	Median Value	Max or Only Value
	Oil & Grease	mg/L	Lab Analysis	quarter & after each wet weather discharge from points 11, 13, 18,27,43							
	pH	pH	In situ								
	TSS	mg/L	Lab Analysis								
24 (NR1)	pH	pH	In situ	Upon Discharge (within 4 hrs)							<i>Namoi discharge point – Not constructed or currently utilised (NR1)</i>
	TDS	mg/L	Lab Analysis								
25 (NRUS)	pH	pH	In situ	Upon Discharge (within 4 hrs)							<i>Namoi discharge point – Not constructed or currently utilised (NRUS)</i>
	TDS	mg/L	Lab Analysis								
26 (NRDS)	pH	pH	In situ	Upon Discharge (within 4 hrs)							<i>Namoi discharge point – Not constructed or currently utilised (NRDS)</i>
	TDS	mg/L	Lab Analysis								
28 (P28)	Conductivity	µs/cm	In situ	Quarterly							<i>Not scheduled for sampling during this period</i>
	pH	pH	In situ								
	SWL	mbtoc	In situ								
	Bicarbonate	mg/L	Lab Analysis								
	Calcium	mg/L	Lab Analysis								
	Carbonate	mg/L	Lab Analysis								
	Chloride	mg/L	Lab Analysis								
	Magnesium	mg/L	Lab Analysis								
	Potassium	mg/L	Lab Analysis								
	Sodium	mg/L	Lab Analysis								
	Sulphate	mg/L	Lab Analysis								
29 (P29)	Conductivity	µs/cm	In situ	Quarterly							<i>Not scheduled for sampling during this period</i>
	pH	pH	In situ								
	SWL	mbtoc	In situ								
	Bicarbonate	mg/L	Lab Analysis								
	Calcium	mg/L	Lab Analysis								
	Carbonate	mg/L	Lab Analysis								
	Chloride	mg/L	Lab Analysis								

EPL ID	Pollutant	Units of Measure	Sample Method	Monitoring Frequency	No. of Samples for the Month	Dates Sampled	Date Obtained	Min Value	Mean Value	Median Value	Max or Only Value
	Magnesium	mg/L	Lab Analysis								
	Potassium	mg/L	Lab Analysis								
	Sodium	mg/L	Lab Analysis								
	Sulphate	mg/L	Lab Analysis								
30 (P30)	Conductivity	µs/cm	In situ	Quarterly							<i>Not scheduled for sampling during this period</i>
	pH	pH	In situ								
	SWL	mbtoc	In situ								
	Bicarbonate	mg/L	Lab Analysis								
	Calcium	mg/L	Lab Analysis								
	Carbonate	mg/L	Lab Analysis								
	Chloride	mg/L	Lab Analysis								
	Magnesium	mg/L	Lab Analysis								
	Potassium	mg/L	Lab Analysis								
	Sodium	mg/L	Lab Analysis								
Sulphate	mg/L	Lab Analysis									
31 (P31)	Conductivity	µs/cm	In situ	Quarterly							<i>Not scheduled for sampling during this period</i>
	pH	pH	In situ								
	SWL	mbtoc	In situ								
	Bicarbonate	mg/L	Lab Analysis								
	Calcium	mg/L	Lab Analysis								
	Carbonate	mg/L	Lab Analysis								
	Chloride	mg/L	Lab Analysis								
	Magnesium	mg/L	Lab Analysis								
	Potassium	mg/L	Lab Analysis								
	Sodium	mg/L	Lab Analysis								
	Sulphate	mg/L	Lab Analysis								
32 (P32)	Conductivity	µs/cm	In situ	Quarterly							<i>Not scheduled for sampling during this period</i>
	pH	pH	In situ								
	SWL	mbtoc	In situ								

EPL ID	Pollutant	Units of Measure	Sample Method	Monitoring Frequency	No. of Samples for the Month	Dates Sampled	Date Obtained	Min Value	Mean Value	Median Value	Max or Only Value
	Bicarbonate	mg/L	Lab Analysis								
	Calcium	mg/L	Lab Analysis								
	Carbonate	mg/L	Lab Analysis								
	Chloride	mg/L	Lab Analysis								
	Magnesium	mg/L	Lab Analysis								
	Potassium	mg/L	Lab Analysis								
	Sodium	mg/L	Lab Analysis								
	Sulphate	mg/L	Lab Analysis								
33 (P33)	Conductivity	µs/cm	In situ	Quarterly							<i>Not scheduled for sampling during this period</i>
	pH	pH	In situ								
	SWL	mbtoc	In situ								
	Bicarbonate	mg/L	Lab Analysis								
	Calcium	mg/L	Lab Analysis								
	Carbonate	mg/L	Lab Analysis								
	Chloride	mg/L	Lab Analysis								
	Magnesium	mg/L	Lab Analysis								
	Potassium	mg/L	Lab Analysis								
	Sodium	mg/L	Lab Analysis								
	Sulphate	mg/L	Lab Analysis								
34 (P34)	Conductivity	µs/cm	In situ	Quarterly							<i>Not scheduled for sampling during this period</i>
	pH	pH	In situ								
	SWL	mbtoc	In situ								
	Bicarbonate	mg/L	Lab Analysis								
	Calcium	mg/L	Lab Analysis								
	Carbonate	mg/L	Lab Analysis								
	Chloride	mg/L	Lab Analysis								
	Magnesium	mg/L	Lab Analysis								
	Potassium	mg/L	Lab Analysis								
	Sodium	mg/L	Lab Analysis								
	Sulphate	mg/L	Lab Analysis								

EPL ID	Pollutant	Units of Measure	Sample Method	Monitoring Frequency	No. of Samples for the Month	Dates Sampled	Date Obtained	Min Value	Mean Value	Median Value	Max or Only Value
35 (P58)	Conductivity	µs/cm	In situ	Quarterly							<i>Not scheduled for sampling during this period</i>
	pH	pH	In situ								
	SWL	mbtoc	In situ								
	Bicarbonate	mg/L	Lab Analysis								
	Calcium	mg/L	Lab Analysis								
	Carbonate	mg/L	Lab Analysis								
	Chloride	mg/L	Lab Analysis								
	Magnesium	mg/L	Lab Analysis								
	Potassium	mg/L	Lab Analysis								
	Sodium	mg/L	Lab Analysis								
	Sulfate	mg/L	Lab Analysis								
36 (P83)	Conductivity	µs/cm	In situ	Quarterly							<i>Not scheduled for sampling during this period</i>
	pH	pH	In situ								
	SWL	mbtoc	In situ								
	Bicarbonate	mg/L	Lab Analysis								
	Calcium	mg/L	Lab Analysis								
	Carbonate	mg/L	Lab Analysis								
	Chloride	mg/L	Lab Analysis								
	Magnesium	mg/L	Lab Analysis								
	Potassium	mg/L	Lab Analysis								
	Sodium	mg/L	Lab Analysis								
	Sulphate	mg/L	Lab Analysis								
37 (P84)	Conductivity	µs/cm	In situ	Quarterly							<i>Not scheduled for sampling during this period</i>
	pH	pH	In situ								
	SWL	mbtoc	In situ								
	Bicarbonate	mg/L	Lab Analysis								
	Calcium	mg/L	Lab Analysis								
	Carbonate	mg/L	Lab Analysis								
	Chloride	mg/L	Lab Analysis								
	Magnesium	mg/L	Lab Analysis								

EPL ID	Pollutant	Units of Measure	Sample Method	Monitoring Frequency	No. of Samples for the Month	Dates Sampled	Date Obtained	Min Value	Mean Value	Median Value	Max or Only Value
	Potassium	mg/L	Lab Analysis								
	Sodium	mg/L	Lab Analysis								
	Sulphate	mg/L	Lab Analysis								
38 (P85)	Conductivity	µs/cm	In situ	Quarterly							<i>Not scheduled for sampling during this period</i>
	pH	pH	In situ								
	SWL	mbtoc	In situ								
	Bicarbonate	mg/L	Lab Analysis								
	Calcium	mg/L	Lab Analysis								
	Carbonate	mg/L	Lab Analysis								
	Chloride	mg/L	Lab Analysis								
	Magnesium	mg/L	Lab Analysis								
	Potassium	mg/L	Lab Analysis								
	Sodium	mg/L	Lab Analysis								
Sulfate	mg/L	Lab Analysis									
39 (P88)	Conductivity	µs/cm	In situ	Quarterly							<i>Not scheduled for sampling during this period</i>
	pH	pH	In situ								
	SWL	mbtoc	In situ								
	Bicarbonate	mg/L	Lab Analysis								
	Calcium	mg/L	Lab Analysis								
	Carbonate	mg/L	Lab Analysis								
	Chloride	mg/L	Lab Analysis								
	Magnesium	mg/L	Lab Analysis								
	Potassium	mg/L	Lab Analysis								
	Sodium	mg/L	Lab Analysis								
Sulfate	mg/L	Lab Analysis									
40 (P89)	Conductivity	µs/cm	In situ	Quarterly							<i>Not scheduled for sampling during this period</i>
	pH	pH	In situ								
	SWL	mbtoc	In situ								

EPL ID	Pollutant	Units of Measure	Sample Method	Monitoring Frequency	No. of Samples for the Month	Dates Sampled	Date Obtained	Min Value	Mean Value	Median Value	Max or Only Value
	Bicarbonate	mg/L	Lab Analysis								
	Calcium	mg/L	Lab Analysis								
	Carbonate	mg/L	Lab Analysis								
	Chloride	mg/L	Lab Analysis								
	Magnesium	mg/L	Lab Analysis								
	Potassium	mg/L	Lab Analysis								
	Sodium	mg/L	Lab Analysis								
Sulphate	mg/L	Lab Analysis									
43 (SD9)	Conductivity	µs/cm	In situ	Upon discharge (within 12 hours)	<i>No discharge occurred during sampling period (SD9)</i>						
	TOC	mg/L	Lab Analysis								
44 (KCTOP)	Conductivity	µs/cm	In situ	In the event of flow during the quarter & after each wet weather discharge from points 11, 13, 18,27,43	<i>No flow recorded during discharge of EPL 43</i>						
	TOC	mg/L	Lab Analysis								
	Oil & Grease	mg/L	Lab Analysis								
	pH	pH	In situ								
	TSS	mg/L	Lab Analysis								
43 (SD9)	Conductivity	µs/cm	In situ	Upon discharge (within 12 hours)	<i>No discharge occurred during sampling period (SD10)</i>						
	TOC	mg/L	Lab Analysis								

Table 2 - Pollutant Limits Apply (Water)

EPL ID	Pollutant	Units of Measure	Sample Method	Monitoring Frequency	No. of Samples for the Month	Date Sampled	Date Obtained	Min Value	Mean Value	Max or Only Value	EPL Limit	Exceedance (Yes/No)	Comments (Mine Site Sample ID)	
11	TSS	mg/L	Lab Analysis	Upon discharge	0						50	NA	SD4	
	Oil & Grease	mg/L	Lab Analysis		0						<i>No discharge occurred during sampling period</i>	10		NA
	pH	pH	In situ		0						6.5-8.5	NA		
13	TSS	mg/L	Lab Analysis	Upon discharge	0						50	NA	SD2	
	Oil & Grease	mg/L	Lab Analysis		0						<i>No discharge occurred during sampling period</i>	10		NA
	pH	pH	In situ		0						6.5-8.5	NA		
18	TSS	mg/L	Lab Analysis	Upon discharge	0						50	NA	SD7	
	Oil & Grease	mg/L	Lab Analysis		0						<i>No discharge occurred during sampling period</i>	10		NA
	pH	pH	In situ		0						6.5-8.5	NA		
24	TDS	mg/L	Lab Analysis	Upon discharge	0						350	NA	NR1	
	pH	pH	In situ		0						<i>Namoi discharge point – Not constructed or currently utilised.</i>	6.5-8.5		NA
27	TSS	mg/L	Lab Analysis	Upon discharge	0						50	NA	SD8	
	Oil & Grease	mg/L	Lab Analysis		0						<i>No discharge occurred during sampling period</i>	10		NA
	pH	pH	In situ		0						6.5-8.5	NA		

EPL ID	Pollutant	Units of Measure	Sample Method	Monitoring Frequency	No. of Samples for the Month	Date Sampled	Date Obtained	Min Value	Mean Value	Max or Only Value	EPL Limit	Exceedance (Yes/No)	Comments (Mine Site Sample ID)
43	TSS	mg/L	Lab Analysis	Upon discharge	0	<i>No discharge occurred during sampling period</i>					50	NA	SD9
	Oil & Grease	mg/L	Lab Analysis		0						10	NA	
	pH	pH	In situ		0						6.5-8.5	NA	
45	TSS	mg/L	Lab Analysis	Upon discharge	0	<i>No discharge occurred during sampling period</i>					50	NA	SD10
	Oil & Grease	mg/L	Lab Analysis		0						10	NA	
	pH	pH	In situ		0						6.5-8.5	NA	

Table 3 – Quarterly Attended Noise Monitoring Results Summary Table

EPL ID	Date	Measured Levels LA eq (15 min) Day	Measured Levels LA eq (15 min) Evening	Measured Levels LA eq (15 min) Night	Measured Levels LA1 (1 min) Night	Limit (s)	Measurement	Standard Weather			Date Obtained
							Periods	Day	Evening	Night	
N5 ¹											
N6											
N8 ¹											
N9 ¹											

Noise monitoring not scheduled in April 2026. Next scheduled sampling is for June 2026.

Note 1: Property is owned by Narrabri Coal Operations. Noise limits contained in Conditions 1-3, Schedule 4 of PA 08_0144 Mod 2 and the identical limits contained in condition L3 of Environment Protection Licence No 12789 are not applicable.

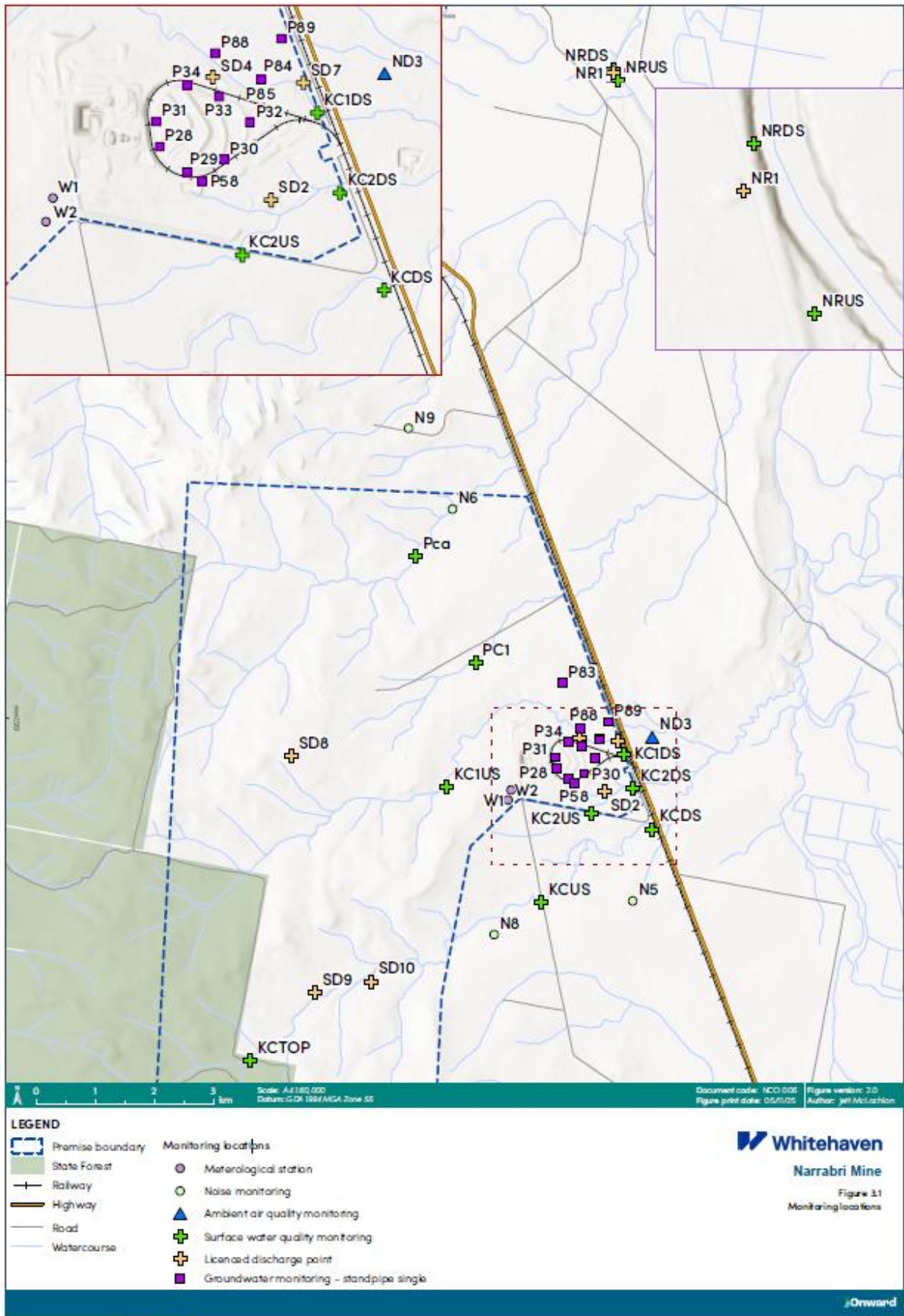


Figure 1 – EPL 12789 Monitoring Locations