



NARRABRI MINE – MONTHLY MONITORING SUMMARY

Site Information

EPL No: 12789

EPA Website Link: <http://www.epa.nsw.gov.au/prpoeoapp/ViewPOEOLicence.aspx?DOCID=106922&SYSUID=1&LICID=12789>

Licensee: Narrabri Coal Operations Pty Ltd

Licensee Address: Narrabri Mine, 10 Kurrajong Creek Road, BAAN BAA NSW 2390

EPL Monitoring Points: See Figure 1 below

Sampling Period: January 2025

Obtained Date: 28/01/2025

Publication Date: 13/02/2025

Table 1 – No Pollutant Limits Apply

EPL ID	Pollutant	Units of Measure	Sample Method	Monitoring Frequency	No. of Samples for the Month	Dates Sampled	Date Obtained	Min Value	Mean Value	Median Value	Max or Only Value
ND3	Deposited Matter	g/m ² /month	Lab Analysis	Once a month (min. 4 weeks)	1	13/01/2025	28/01/2025	NA	NA	NA	0.8
11 (SD4)	Conductivity	µs/cm	In situ	Upon discharge (within 12 hours)	<i>No discharge occurred during sampling period (SD4)</i>						
	TOC	mg/L	Lab Analysis								
13 (SD2)	Conductivity	µs/cm	In situ	Upon discharge (within 12 hours)	<i>No discharge occurred during sampling period (SD2)</i>						
	TOC	mg/L	Lab Analysis								
14 (KC1US)	Conductivity	µs/cm	In situ	In the event of flow during the quarter & after each wet weather discharge from points 11, 13, 18,27	<i>No flow events and/or mine discharge occurred during sampling period (KC1US)</i>						
	TOC	mg/L	Lab Analysis								
	Oil & Grease	mg/L	Lab Analysis								
	pH	pH	In situ								
15 (KC1DS)	TSS	mg/L	Lab Analysis	In the event of flow during the quarter & after each wet weather discharge from points 11, 13, 18,27	<i>No flow events and/or mine discharge occurred during sampling period (KC1DS)</i>						
	Conductivity	µs/cm	In situ								
	TOC	mg/L	Lab Analysis								
	Oil & Grease	mg/L	Lab Analysis								
	pH	pH	In situ								

16 (KC2US)	Conductivity	µs/cm	In situ	In the event of flow during the quarter & after each wet weather discharge from points 11, 13, 18,27	<i>No flow events and/or mine discharge occurred during sampling period (KC2US)</i>
	TOC	mg/L	Lab Analysis		
	Oil & Grease	mg/L	Lab Analysis		
	pH	pH	In situ		
	TSS	mg/L	Lab Analysis		
17 (KC2DS)	Conductivity	µs/cm	In situ	In the event of flow during the quarter & after each wet weather discharge from points 11, 13, 18,27	<i>No flow events and/or mine discharge occurred during sampling period (KC2DS)</i>
	TOC	mg/L	Lab Analysis		
	Oil & Grease	mg/L	Lab Analysis		
	pH	pH	In situ		
	TSS	mg/L	Lab Analysis		
18 (SD7)	Conductivity	µs/cm	In Situ	Upon discharge (within 12 hours)	<i>No discharge occurred during sampling period (SD7)</i>
	TOC	mg/L	Lab Analysis		
19 (KCUS)	Conductivity	µs/cm	In situ	In the event of flow during the quarter & after each wet weather discharge from points 11, 13, 18,27	<i>No flow events and/or mine discharge occurred during sampling period (KCUS)</i>
	TOC	mg/L	Lab Analysis		
	Oil & Grease	mg/L	Lab Analysis		
	pH	pH	In situ		
	TSS	mg/L	Lab Analysis		
20 (KCDS)	Conductivity	µs/cm	In situ	In the event of flow during the quarter & after each wet weather discharge	<i>No flow events and/or mine discharge occurred during sampling period (KCDS)</i>
	TOC	mg/L	Lab Analysis		
	Oil & Grease	mg/L	Lab Analysis		
	pH	pH	In situ		

	TSS	mg/L	Lab Analysis	from points 11, 13, 18,27	
21 (PCa)	Conductivity	µs/cm	In situ	In the event of flow during the quarter & after each wet weather discharge from points 11, 13, 18,27	<i>No flow events and/or mine discharge occurred during sampling period (PCa)</i>
	TOC	mg/L	Lab Analysis		
	Oil & Grease	mg/L	Lab Analysis		
	pH	pH	In situ		
	TSS	mg/L	Lab Analysis		
22 (PC1)	Conductivity	µs/cm	In situ	In the event of flow during the quarter & after each wet weather discharge from points 11, 13, 18,27	<i>No flow events and/or mine discharge occurred during sampling period (PC1)</i>
	TOC	mg/L	Lab Analysis		
	Oil & Grease	mg/L	Lab Analysis		
	pH	pH	In situ		
	TSS	mg/L	Lab Analysis		
24 (NR1)	pH	pH	In situ	Upon Discharge (within 4 hrs)	<i>Namoi discharge point – Not constructed or currently utilised (NR1)</i>
	TDS	mg/L	Lab Analysis		
25 (NRUS)	pH	pH	In situ	Upon Discharge (within 4 hrs)	<i>Namoi discharge point – Not constructed or currently utilised (NRUS)</i>
	TDS	mg/L	Lab Analysis		
26 (NRDS)	pH	pH	In situ	Upon Discharge (within 4 hrs)	<i>Namoi discharge point – Not constructed or currently utilised (NRDS)</i>
	TDS	mg/L	Lab Analysis		
28 (P28)	Conductivity	µs/cm	In situ	Quarterly	0
	pH	pH	In situ		0
	SWL	mbtoc	In situ		0
	Bicarbonate	mg/L	Lab Analysis		0
					<i>Not scheduled for sampling during sampling period</i>

	Calcium	mg/L	Lab Analysis		0	
	Carbonate	mg/L	Lab Analysis		0	
	Chloride	mg/L	Lab Analysis		0	
	Magnesium	mg/L	Lab Analysis		0	
	Potassium	mg/L	Lab Analysis		0	
	Sodium	mg/L	Lab Analysis		0	
	Sulphate	mg/L	Lab Analysis		0	
29 (P29)	Conductivity	µs/cm	Lab Analysis	Quarterly	0	<i>Not scheduled for sampling during sampling period</i>
	pH	pH	Lab Analysis		0	
	SWL	mbtoc	Lab Analysis		0	
	Bicarbonate	mg/L	Lab Analysis		0	
	Calcium	mg/L	Lab Analysis		0	
	Carbonate	mg/L	Lab Analysis		0	
	Chloride	mg/L	Lab Analysis		0	
	Magnesium	mg/L	Lab Analysis		0	
	Potassium	mg/L	Lab Analysis		0	
	Sodium	mg/L	Lab Analysis		0	

	Sulphate	mg/L	Lab Analysis		0	
30 (P30)	Conductivity	µs/cm	Lab Analysis	Quarterly	0	<i>Not scheduled for sampling during sampling period</i>
	pH	pH	Lab Analysis		0	
	SWL	mbtoc	Lab Analysis		0	
	Bicarbonate	mg/L	Lab Analysis		0	
	Calcium	mg/L	Lab Analysis		0	
	Carbonate	mg/L	Lab Analysis		0	
	Chloride	mg/L	Lab Analysis		0	
	Magnesium	mg/L	Lab Analysis		0	
	Potassium	mg/L	Lab Analysis		0	
	Sodium	mg/L	Lab Analysis		0	
	Sulphate	mg/L	Lab Analysis		0	
31 (P31)	Conductivity	µs/cm	Lab Analysis	Quarterly	0	<i>Not scheduled for sampling during sampling period</i>
	pH	pH	Lab Analysis		0	
	SWL	mbtoc	Lab Analysis		0	
	Bicarbonate	mg/L	Lab Analysis		0	
	Calcium	mg/L	Lab Analysis		0	

	Carbonate	mg/L	Lab Analysis		0	
	Chloride	mg/L	Lab Analysis		0	
	Magnesium	mg/L	Lab Analysis		0	
	Potassium	mg/L	Lab Analysis		0	
	Sodium	mg/L	Lab Analysis		0	
	Sulphate	mg/L	Lab Analysis		0	
32 (P32)	Conductivity	µs/cm	Lab Analysis	Quarterly	0	<i>Not scheduled for sampling during sampling period</i>
	pH	pH	Lab Analysis		0	
	SWL	mbtoc	Lab Analysis		0	
	Bicarbonate	mg/L	Lab Analysis		0	
	Calcium	mg/L	Lab Analysis		0	
	Carbonate	mg/L	Lab Analysis		0	
	Chloride	mg/L	Lab Analysis		0	
	Magnesium	mg/L	Lab Analysis		0	
	Potassium	mg/L	Lab Analysis		0	
	Sodium	mg/L	Lab Analysis		0	
	Sulphate	mg/L	Lab Analysis		0	

33 (P33)	Conductivity	µs/cm	Lab Analysis	Quarterly	0	<i>Not scheduled for sampling during sampling period</i>
	pH	pH	Lab Analysis		0	
	SWL	mbtoc	Lab Analysis		0	
	Bicarbonate	mg/L	Lab Analysis		0	
	Calcium	mg/L	Lab Analysis		0	
	Carbonate	mg/L	Lab Analysis		0	
	Chloride	mg/L	Lab Analysis		0	
	Magnesium	mg/L	Lab Analysis		0	
	Potassium	mg/L	Lab Analysis		0	
	Sodium	mg/L	Lab Analysis		0	
	Sulphate	mg/L	Lab Analysis		0	
34 (P34)	Conductivity	µs/cm	In situ	Quarterly	0	<i>Not scheduled for sampling during sampling period</i>
	pH	pH	In situ		0	
	SWL	mbtoc	In situ		0	
	Bicarbonate	mg/L	Lab Analysis		0	
	Calcium	mg/L	Lab Analysis		0	
	Carbonate	mg/L	Lab Analysis		0	
	Chloride	mg/L	Lab Analysis		0	
	Magnesium	mg/L	Lab Analysis		0	

	Potassium	mg/L	Lab Analysis		0	
	Sodium	mg/L	Lab Analysis		0	
	Sulphate	mg/L	Lab Analysis		0	
35 (P58)	Conductivity	µs/cm	Lab Analysis	Quarterly	0	<i>Not scheduled for sampling during sampling period</i>
	pH	pH	Lab Analysis		0	
	SWL	mbtoc	Lab Analysis		0	
	Bicarbonate	mg/L	Lab Analysis		0	
	Calcium	mg/L	Lab Analysis		0	
	Carbonate	mg/L	Lab Analysis		0	
	Chloride	mg/L	Lab Analysis		0	
	Magnesium	mg/L	Lab Analysis		0	
	Potassium	mg/L	Lab Analysis		0	
	Sodium	mg/L	Lab Analysis		0	
	Sulfate	mg/L	Lab Analysis		0	
36 (P83)	Conductivity	µs/cm	In situ	Quarterly	0	<i>Not scheduled for sampling during sampling period</i>
	pH	pH	In situ		0	
	SWL	mbtoc	In situ		0	
	Bicarbonate	mg/L	Lab Analysis		0	
	Calcium	mg/L	Lab Analysis		0	

	Carbonate	mg/L	Lab Analysis		0	
	Chloride	mg/L	Lab Analysis		0	
	Magnesium	mg/L	Lab Analysis		0	
	Potassium	mg/L	Lab Analysis		0	
	Sodium	mg/L	Lab Analysis		0	
	Sulphate	mg/L	Lab Analysis		0	
37 (P84)	Conductivity	µs/cm	In situ	Quarterly	0	<i>Not scheduled for sampling during sampling period</i>
	pH	pH	In situ		0	
	SWL	mbtoc	In situ		0	
	Bicarbonate	mg/L	Lab Analysis		0	
	Calcium	mg/L	Lab Analysis		0	
	Carbonate	mg/L	Lab Analysis		0	
	Chloride	mg/L	Lab Analysis		0	
	Magnesium	mg/L	Lab Analysis		0	
	Potassium	mg/L	Lab Analysis		0	
	Sodium	mg/L	Lab Analysis		0	
	Sulphate	mg/L	Lab Analysis		0	
38 (P85)	Conductivity	µs/cm	In situ		0	
	pH	pH	In situ		0	
	SWL	mbtoc	In situ		0	

	Bicarbonate	mg/L	Lab Analysis	Quarterly	0	<i>Not scheduled for sampling during sampling period</i>
	Calcium	mg/L	Lab Analysis		0	
	Carbonate	mg/L	Lab Analysis		0	
	Chloride	mg/L	Lab Analysis		0	
	Magnesium	mg/L	Lab Analysis		0	
	Potassium	mg/L	Lab Analysis		0	
	Sodium	mg/L	Lab Analysis		0	
	Sulfate	mg/L	Lab Analysis		0	
39 (P88)	Conductivity	µs/cm	In situ	Quarterly	0	<i>Not scheduled for sampling during sampling period</i>
	pH	pH	In situ		0	
	SWL	mbtoc	In situ		0	
	Bicarbonate	mg/L	Lab Analysis		0	
	Calcium	mg/L	Lab Analysis		0	
	Carbonate	mg/L	Lab Analysis		0	
	Chloride	mg/L	Lab Analysis		0	
	Magnesium	mg/L	Lab Analysis		0	
	Potassium	mg/L	Lab Analysis		0	
	Sodium	mg/L	Lab Analysis		0	
	Sulfate	mg/L	Lab Analysis		0	

40 (P89)	Conductivity	µs/cm	In situ	Quarterly	0	<i>Not scheduled for sampling during sampling period</i>
	pH	pH	In situ		0	
	SWL	mbtoc	In situ		0	
	Bicarbonate	mg/L	Lab Analysis		0	
	Calcium	mg/L	Lab Analysis		0	
	Carbonate	mg/L	Lab Analysis		0	
	Chloride	mg/L	Lab Analysis		0	
	Magnesium	mg/L	Lab Analysis		0	
	Potassium	mg/L	Lab Analysis		0	
	Sodium	mg/L	Lab Analysis		0	
	Sulphate	mg/L	Lab Analysis		0	
43 (SD9)	Conductivity	µs/cm	In situ		0	<i>No discharge occurred during sampling period (SD9)</i>
	pH	pH	In situ		0	
	SWL	mbtoc	In situ		0	
	Bicarbonate	mg/L	Lab Analysis		0	
	Calcium	mg/L	Lab Analysis		0	
	Carbonate	mg/L	Lab Analysis		0	
	Chloride	mg/L	Lab Analysis		0	
	Magnesium	mg/L	Lab Analysis		0	
Potassium	mg/L	Lab Analysis		0		



	Sodium	mg/L	Lab Analysis			
	Sulphate	mg/L	Lab Analysis			



Table 2 - Pollutant Limits Apply (Water)

EPL ID	Pollutant	Units of Measure	Sample Method	Monitoring Frequency	No. of Samples for the Month	Date Sampled	Date Obtained	Min Value	Mean Value	Max or Only Value	EPL Limit	Exceedance (Yes/No)	Comments (Mine Site Sample ID)
11	TSS	mg/L	Lab Analysis	Upon discharge	0	<i>No discharge occurred during sampling period</i>					50	NA	SD4
	Oil & Grease	mg/L	Lab Analysis		0						10	NA	
	pH	pH	In situ		0						6.5-8.5	NA	
13	TSS	mg/L	Lab Analysis	Upon discharge	0	<i>No discharge occurred during sampling period</i>					50	NA	SD2
	Oil & Grease	mg/L	Lab Analysis		0						10	NA	
	pH	pH	In situ		0						6.5-8.5	NA	
18	TSS	mg/L	Lab Analysis	Upon discharge	0	<i>No discharge occurred during sampling period</i>					50	NA	SD7
	Oil & Grease	mg/L	Lab Analysis		0						10	NA	
	pH	pH	In situ		0						6.5-8.5	NA	
24	TDS	mg/L	Lab Analysis	Upon discharge	0	<i>Namoi discharge point – Not constructed or currently utilised.</i>					350	NA	NR1
	pH	pH	In situ		0						6.5-8.5	NA	
27	TSS	mg/L	Lab Analysis	Upon discharge	0	<i>No discharge occurred during sampling period</i>					50	NA	SD8
	Oil & Grease	mg/L	Lab Analysis		0						10	NA	
	pH	pH	In situ		0						6.5-8.5	NA	
43	TSS	mg/L	Lab Analysis	Upon discharge	0	<i>No discharge occurred during sampling period</i>					50	NA	SD9



	Oil & Grease	mg/L	Lab Analysis		0		10	NA	
	pH	pH	In situ		0		6.5-8.5	NA	

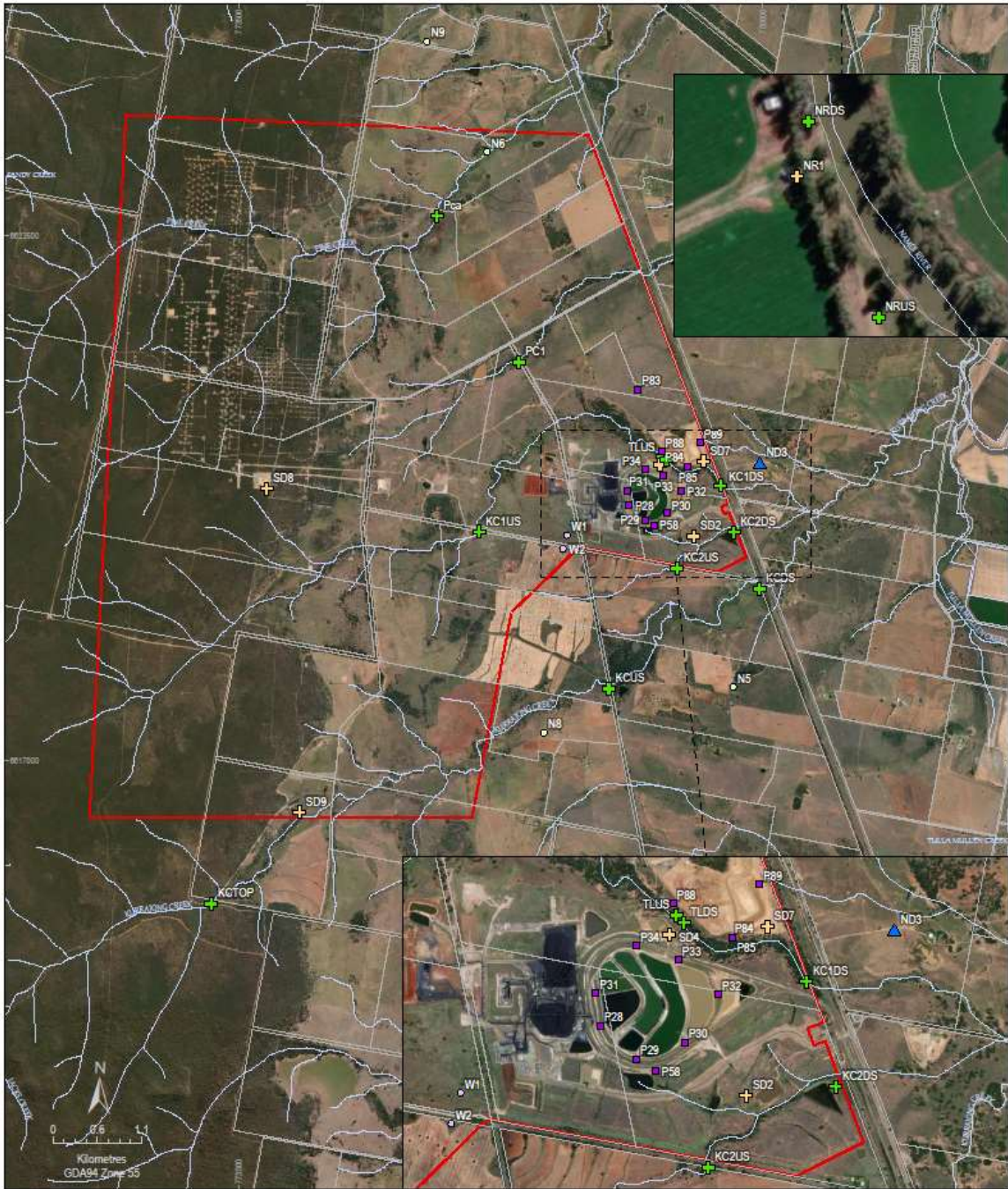


Table 3 – Quarterly Attended Noise Monitoring results summary table

Noise monitoring not scheduled in January 2025. Next scheduled sampling is for March 2025.

EPL ID	Date	Measured Levels – dB(A)	Measured Levels – dB(A)	Measured Levels – dB(A)	Measured Levels – dB(A)	Limit(s)	Measurement Periods	Weather Compliant Conditions (D/E/N)			Compliant (Yes/No)	Date Obtained
		Leq 15min Day	Leq 15min Evening	Leq 15min Night	LA1 (1 min) Night							
N5 ¹						<u>Day, Evening & Night:</u> 35 <u>Night</u> <u>LA1 (1 min):</u> 45	Day – 1.5 hrs					
							Evening – 0.5 hrs					
								Night – 1 hr				
N6						<u>Day, Evening & Night:</u> 35 <u>Night</u> <u>LA1 (1 min):</u> 45	Day – 1.5 hrs					
							Evening – 0.5 hrs					
								Night – 1 hr				
N8 ¹						<u>Day, Evening & Night:</u> 35 <u>Night</u> <u>LA1 (1 min):</u> 45	Day – 1.5 hrs					
							Evening – 0.5 hrs					
								Night – 1 hr				
N9 ¹						<u>Day, Evening & Night:</u> 35 <u>Night</u> <u>LA1 (1 min):</u> 45	Day – 1.5 hrs					
							Evening – 0.5 hrs					
								Night – 1 hr				

Figure 1 – EPL 12789 Monitoring Locations



WHITEHAVEN COAL

LEGEND

ML1609	Monitoring locations
Lot boundary	Surface water quality monitoring
Watercourses	Licensed discharge point
	Ambient air quality monitoring
	Groundwater monitoring - standpipe single
	Meteorological station
	Noise monitoring

NARRABRI MINE

Figure 1
EPL 12789 Monitoring Locations
February 2024



NARRABRI MINE – MONTHLY MONITORING SUMMARY

Site Information

EPL No: 12789

EPA Website Link: <http://www.epa.nsw.gov.au/prpoeoapp/ViewPOEOLicence.aspx?DOCID=106922&SYSUID=1&LICID=12789>

Licensee: Narrabri Coal Operations Pty Ltd

Licensee Address: Narrabri Mine, 10 Kurrajong Creek Road, BAAN BAA NSW 2390

EPL Monitoring Points: See Figure 1 below

Sampling Period: February 2025

Obtained Date: 27.02.2025

Publication Date: 13.03.2025

Table 1 – No Pollutant Limits Apply

EPL ID	Pollutant	Units of Measure	Sample Method	Monitoring Frequency	No. of Samples for the Month	Dates Sampled	Date Obtained	Min Value	Mean Value	Median Value	Max or Only Value
ND3	Deposited Matter	g/m ² /month	Lab Analysis	Once a month (min. 4 weeks)	1	12/02/2025	27/02/2025	NA	NA	NA	0.3
11 (SD4)	Conductivity	µs/cm	In situ	Upon discharge (within 12 hours)	<i>No discharge occurred during sampling period (SD4)</i>						
	TOC	mg/L	Lab Analysis								
13 (SD2)	Conductivity	µs/cm	In situ	Upon discharge (within 12 hours)	<i>No discharge occurred during sampling period (SD2)</i>						
	TOC	mg/L	Lab Analysis								
	TOC	mg/L	Lab Analysis								
14 (KC1US)	Conductivity	µs/cm	In situ	In the event of flow during the quarter & after each wet weather discharge from points 11, 13, 18,27, 43	<i>No flow recorded during discharge of EPA 11</i>						
	TOC	mg/L	Lab Analysis								
	Oil & Grease	mg/L	Lab Analysis								
	pH	pH	In situ								
	TSS	mg/L	Lab Analysis								
15 (KC1DS)	Conductivity	µs/cm	In situ	In the event of flow during the quarter & after each wet weather discharge from points 11, 13, 18,27, 43	<i>No flow recorded during discharge of EPA 11</i>						
	TOC	mg/L	Lab Analysis								
	Oil & Grease	mg/L	Lab Analysis								
	pH	pH	In situ								
	TSS	mg/L	Lab Analysis								



16 (KC2US)	Conductivity	µs/cm	In situ	In the event of flow during the quarter & after each wet weather discharge from points 11, 13, 18,27, 43	<i>No flow recorded during discharge of EPA 13</i>
	TOC	mg/L	Lab Analysis		
	Oil & Grease	mg/L	Lab Analysis		
	pH	pH	In situ		
	TSS	mg/L	Lab Analysis		
17 (KC2DS)	Conductivity	µs/cm	In situ	In the event of flow during the quarter & after each wet weather discharge from points 11, 13, 18,27,43	<i>No flow recorded during discharge of EPA 13</i>
	TOC	mg/L	Lab Analysis		
	Oil & Grease	mg/L	Lab Analysis		
	pH	pH	In situ		
	TSS	mg/L	Lab Analysis		
18 (SD7)	Conductivity	µs/cm	In Situ	Upon discharge (within 12 hours)	<i>No discharge occurred during sampling period (SD7)</i>
	TOC	mg/L	Lab Analysis		
19 (KCUS)	Conductivity	µs/cm	In situ	In the event of flow during the quarter & after each wet weather discharge from points 11, 13, 18,27,43	<i>No flow events and/or mine discharge occurred during sampling period (KCUS)</i>
	TOC	mg/L	Lab Analysis		
	Oil & Grease	mg/L	Lab Analysis		
	pH	pH	In situ		
	TSS	mg/L	Lab Analysis		
20 (KCDS)	Conductivity	µs/cm	In situ	In the event of flow during the quarter & after each wet weather	<i>No flow events and/or mine discharge occurred during sampling period (KCDS)</i>
	TOC	mg/L	Lab Analysis		
	Oil & Grease	mg/L	Lab Analysis		

	pH	pH	In situ	discharge from points 11, 13, 18,27,43	
	TSS	mg/L	Lab Analysis		
21 (PCa)	Conductivity	µs/cm	In situ	In the event of flow during the quarter & after each wet weather discharge from points 11, 13, 18,27,43	<i>No flow events and/or mine discharge occurred during sampling period (PCa)</i>
	TOC	mg/L	Lab Analysis		
	Oil & Grease	mg/L	Lab Analysis		
	pH	pH	In situ		
	TSS	mg/L	Lab Analysis		
22 (PC1)	Conductivity	µs/cm	In situ	In the event of flow during the quarter & after each wet weather discharge from points 11, 13, 18,27,43	<i>No flow events and/or mine discharge occurred during sampling period (PC1)</i>
	TOC	mg/L	Lab Analysis		
	Oil & Grease	mg/L	Lab Analysis		
	pH	pH	In situ		
	TSS	mg/L	Lab Analysis		
24 (NR1)	pH	pH	In situ	Upon Discharge (within 4 hrs)	<i>Namoi discharge point – Not constructed or currently utilised (NR1)</i>
	TDS	mg/L	Lab Analysis		
25 (NRUS)	pH	pH	In situ	Upon Discharge (within 4 hrs)	<i>Namoi discharge point – Not constructed or currently utilised (NRUS)</i>
	TDS	mg/L	Lab Analysis		
26 (NRDS)	pH	pH	In situ	Upon Discharge (within 4 hrs)	<i>Namoi discharge point – Not constructed or currently utilised (NRDS)</i>
	TDS	mg/L	Lab Analysis		
28 (P28)	Conductivity	µs/cm	In situ	Quarterly	<i>Bore was dry during sampling period</i>
	pH	pH	In situ		
	SWL	mbtoc	In situ		

	Bicarbonate	mg/L	Lab Analysis								
	Calcium	mg/L	Lab Analysis								
	Carbonate	mg/L	Lab Analysis								
	Chloride	mg/L	Lab Analysis								
	Magnesium	mg/L	Lab Analysis								
	Potassium	mg/L	Lab Analysis								
	Sodium	mg/L	Lab Analysis								
	Sulphate	mg/L	Lab Analysis								
29 (P29)	Conductivity	µs/cm	In situ	Quarterly	1	04/02/2025	18/02/2025	NA	NA	NA	13060
	pH	pH	In situ		1	04/02/2025	18/02/2025	NA	NA	NA	7.02
	SWL	mbtoc	In situ		1	04/02/2025	18/02/2025	NA	NA	NA	4.45
	Bicarbonate	mg/L	Lab Analysis		1	04/02/2025	18/02/2025	NA	NA	NA	685
	Calcium	mg/L	Lab Analysis		1	04/02/2025	18/02/2025	NA	NA	NA	120
	Carbonate	mg/L	Lab Analysis		1	04/02/2025	18/02/2025	NA	NA	NA	<1
	Chloride	mg/L	Lab Analysis		1	04/02/2025	18/02/2025	NA	NA	NA	5150
	Magnesium	mg/L	Lab Analysis		1	04/02/2025	18/02/2025	NA	NA	NA	290
	Potassium	mg/L	Lab Analysis		1	04/02/2025	18/02/2025	NA	NA	NA	5
	Sodium	mg/L	Lab Analysis		1	04/02/2025	18/02/2025	NA	NA	NA	3290

	Sulphate	mg/L	Lab Analysis		1	04/02/2025	18/02/2025	NA	NA	NA	634
30 (P30)	Conductivity	µs/cm	In situ	Quarterly	1	04/02/2025	18/02/2025	NA	NA	NA	20800
	pH	pH	In situ		1	04/02/2025	18/02/2025	NA	NA	NA	6.82
	SWL	mbtoc	In situ		1	04/02/2025	18/02/2025	NA	NA	NA	10.51
	Bicarbonate	mg/L	Lab Analysis		1	04/02/2025	18/02/2025	NA	NA	NA	918
	Calcium	mg/L	Lab Analysis		1	04/02/2025	18/02/2025	NA	NA	NA	134
	Carbonate	mg/L	Lab Analysis		1	04/02/2025	18/02/2025	NA	NA	NA	<1
	Chloride	mg/L	Lab Analysis		1	04/02/2025	18/02/2025	NA	NA	NA	4880
	Magnesium	mg/L	Lab Analysis		1	04/02/2025	18/02/2025	NA	NA	NA	359
	Potassium	mg/L	Lab Analysis		1	04/02/2025	18/02/2025	NA	NA	NA	18
	Sodium	mg/L	Lab Analysis		1	04/02/2025	18/02/2025	NA	NA	NA	3220
	Sulphate	mg/L	Lab Analysis		1	04/02/2025	18/02/2025	NA	NA	NA	1040
31 (P31)	Conductivity	µs/cm	In situ	Quarterly	1	04/02/2025	18/02/2025	NA	NA	NA	6930
	pH	pH	In situ		1	04/02/2025	18/02/2025	NA	NA	NA	7.01
	SWL	mbtoc	In situ		1	04/02/2025	18/02/2025	NA	NA	NA	16.45
	Bicarbonate	mg/L	Lab Analysis		1	04/02/2025	18/02/2025	NA	NA	NA	881
	Calcium	mg/L	Lab Analysis		1	04/02/2025	18/02/2025	NA	NA	NA	96
	Carbonate	mg/L	Lab Analysis		1	04/02/2025	18/02/2025	NA	NA	NA	<1
	Chloride	mg/L	Lab Analysis		1	04/02/2025	18/02/2025	NA	NA	NA	1490

	Magnesium	mg/L	Lab Analysis		1	04/02/2025	18/02/2025	NA	NA	NA	174
	Potassium	mg/L	Lab Analysis		1	04/02/2025	18/02/2025	NA	NA	NA	15
	Sodium	mg/L	Lab Analysis		1	04/02/2025	18/02/2025	NA	NA	NA	1260
	Sulphate	mg/L	Lab Analysis		1	04/02/2025	18/02/2025	NA	NA	NA	337
32 (P32)	Conductivity	µs/cm	In situ	Quarterly	1	04/02/2025	18/02/2025	NA	NA	NA	1902
	pH	pH	In situ		1	04/02/2025	18/02/2025	NA	NA	NA	8.24
	SWL	mbtoc	In situ		1	04/02/2025	18/02/2025	NA	NA	NA	7.37
	Bicarbonate	mg/L	Lab Analysis		1	04/02/2025	18/02/2025	NA	NA	NA	916
	Calcium	mg/L	Lab Analysis		1	04/02/2025	18/02/2025	NA	NA	NA	<1
	Carbonate	mg/L	Lab Analysis		1	04/02/2025	18/02/2025	NA	NA	NA	47
	Chloride	mg/L	Lab Analysis		1	04/02/2025	18/02/2025	NA	NA	NA	65
	Magnesium	mg/L	Lab Analysis		1	04/02/2025	18/02/2025	NA	NA	NA	2
	Potassium	mg/L	Lab Analysis		1	04/02/2025	18/02/2025	NA	NA	NA	<1
	Sodium	mg/L	Lab Analysis		1	04/02/2025	18/02/2025	NA	NA	NA	518
	Sulphate	mg/L	Lab Analysis		1	04/02/2025	18/02/2025	NA	NA	NA	57
33 (P33)	Conductivity	µs/cm	In situ	Quarterly	0	<i>Bore was dry during sampling period</i>					
	pH	pH	In situ		0						
	SWL	mbtoc	In situ		0						
	Bicarbonate	mg/L	Lab Analysis		0						
	Calcium	mg/L	Lab Analysis		0						

	Carbonate	mg/L	Lab Analysis		0						
	Chloride	mg/L	Lab Analysis		0						
	Magnesium	mg/L	Lab Analysis		0						
	Potassium	mg/L	Lab Analysis		0						
	Sodium	mg/L	Lab Analysis		0						
	Sulphate	mg/L	Lab Analysis		0						
34 (P34)	Conductivity	µs/cm	In situ	Quarterly	0	<i>Bore was dry during sampling period</i>					
	pH	pH	In situ		0						
	SWL	mbtoc	In situ		0						
	Bicarbonate	mg/L	Lab Analysis		0						
	Calcium	mg/L	Lab Analysis		0						
	Carbonate	mg/L	Lab Analysis		0						
	Chloride	mg/L	Lab Analysis		0						
	Magnesium	mg/L	Lab Analysis		0						
	Potassium	mg/L	Lab Analysis		0						
	Sodium	mg/L	Lab Analysis		0						
	Sulphate	mg/L	Lab Analysis		0						
35 (P58)	Conductivity	µs/cm	In situ	Quarterly	1	04/02/2025	18/02/2025	NA	NA	NA	10720
	pH	pH	In situ		1	04/02/2025	18/02/2025	NA	NA	NA	6.85
	SWL	mbtoc	In situ		1	04/02/2025	18/02/2025	NA	NA	NA	14.08

	Bicarbonate	mg/L	Lab Analysis		1	04/02/2025	18/02/2025	NA	NA	NA	5040
	Calcium	mg/L	Lab Analysis		1	04/02/2025	18/02/2025	NA	NA	NA	34
	Carbonate	mg/L	Lab Analysis		1	04/02/2025	18/02/2025	NA	NA	NA	<1
	Chloride	mg/L	Lab Analysis		1	04/02/2025	18/02/2025	NA	NA	NA	1520
	Magnesium	mg/L	Lab Analysis		1	04/02/2025	18/02/2025	NA	NA	NA	73
	Potassium	mg/L	Lab Analysis		1	04/02/2025	18/02/2025	NA	NA	NA	80
	Sodium	mg/L	Lab Analysis		1	04/02/2025	18/02/2025	NA	NA	NA	3060
	Sulfate	mg/L	Lab Analysis		1	04/02/2025	18/02/2025	NA	NA	NA	138
36 (P83)	Conductivity	µs/cm	In situ	Quarterly	0	<i>Bore was dry during sampling period</i>					
	pH	pH	In situ		0						
	SWL	mbtoc	In situ		0						
	Bicarbonate	mg/L	Lab Analysis		0						
	Calcium	mg/L	Lab Analysis		0						
	Carbonate	mg/L	Lab Analysis		0						
	Chloride	mg/L	Lab Analysis		0						
	Magnesium	mg/L	Lab Analysis		0						
	Potassium	mg/L	Lab Analysis		0						
	Sodium	mg/L	Lab Analysis		0						
	Sulphate	mg/L	Lab Analysis		0						

37 (P84)	Conductivity	µs/cm	In situ	Quarterly	1	30/01/2025	18/02/2025	NA	NA	NA	20650
	pH	pH	In situ		1	30/01/2025	18/02/2025	NA	NA	NA	6.77
	SWL	mbtoc	In situ		1	30/01/2025	18/02/2025	NA	NA	NA	13.49
	Bicarbonate	mg/L	Lab Analysis		1	30/01/2025	18/02/2025	NA	NA	NA	2700
	Calcium	mg/L	Lab Analysis		1	30/01/2025	18/02/2025	NA	NA	NA	92
	Carbonate	mg/L	Lab Analysis		1	30/01/2025	18/02/2025	NA	NA	NA	<1
	Chloride	mg/L	Lab Analysis		1	30/01/2025	18/02/2025	NA	NA	NA	5970
	Magnesium	mg/L	Lab Analysis		1	30/01/2025	18/02/2025	NA	NA	NA	409
	Potassium	mg/L	Lab Analysis		1	30/01/2025	18/02/2025	NA	NA	NA	38
	Sodium	mg/L	Lab Analysis		1	30/01/2025	18/02/2025	NA	NA	NA	4720
	Sulphate	mg/L	Lab Analysis		1	30/01/2025	18/02/2025	NA	NA	NA	985
38 (P85)	Conductivity	µs/cm	In situ	Quarterly	0	<i>Bore was dry during sampling period</i>					
	pH	pH	In situ		0						
	SWL	mbtoc	In situ		0						
	Bicarbonate	mg/L	Lab Analysis		0						
	Calcium	mg/L	Lab Analysis		0						
	Carbonate	mg/L	Lab Analysis		0						
	Chloride	mg/L	Lab Analysis		0						
	Magnesium	mg/L	Lab Analysis		0						
	Potassium	mg/L	Lab Analysis		0						

	Sodium	mg/L	Lab Analysis		0	
	Sulfate	mg/L	Lab Analysis		0	
39 (P88)	Conductivity	µs/cm	In situ	Quarterly	0	<i>Bore was dry during sampling period</i>
	pH	pH	In situ		0	
	SWL	mbtoc	In situ		0	
	Bicarbonate	mg/L	Lab Analysis		0	
	Calcium	mg/L	Lab Analysis		0	
	Carbonate	mg/L	Lab Analysis		0	
	Chloride	mg/L	Lab Analysis		0	
	Magnesium	mg/L	Lab Analysis		0	
	Potassium	mg/L	Lab Analysis		0	
	Sodium	mg/L	Lab Analysis		0	
	Sulfate	mg/L	Lab Analysis		0	
40 (P89)	Conductivity	µs/cm	In situ	Quarterly	0	<i>Bore was dry during sampling period</i>
	pH	pH	In situ		0	
	SWL	mbtoc	In situ		0	
	Bicarbonate	mg/L	Lab Analysis		0	
	Calcium	mg/L	Lab Analysis		0	
	Carbonate	mg/L	Lab Analysis		0	
	Chloride	mg/L	Lab Analysis		0	

	Magnesium	mg/L	Lab Analysis		0	
	Potassium	mg/L	Lab Analysis		0	
	Sodium	mg/L	Lab Analysis		0	
	Sulphate	mg/L	Lab Analysis		0	
43 (SD9)	Conductivity	µs/cm	In situ	Upon discharge (within 12 hours)	0	<i>No discharge occurred during sampling period (SD9)</i>
	TOC	mg/L	Lab Analysis		0	
44 (KCTOP)	Conductivity	µs/cm	In situ	In the event of flow during the quarter & after each wet weather discharge from points 11, 13, 18,27,43	0	<i>No flow events and/or mine discharge occurred during sampling period (KCTOP)</i>
	TOC	mg/L	Lab Analysis		0	
	Oil & Grease	mg/L	Lab Analysis		0	
	pH	pH	In situ		0	
	TSS	mg/L	Lab Analysis		0	

Table 2 - Pollutant Limits Apply (Water)

EPL ID	Pollutant	Units of Measure	Sample Method	Monitoring Frequency	No. of Samples for the Month	Date Sampled	Date Obtained	Min Value	Mean Value	Max or Only Value	EPL Limit	Exceedance (Yes/No)	Comments (Mine Site Sample ID)
11	TSS	mg/L	Lab Analysis	Upon discharge	0	<i>No discharge occurred during sampling period</i>					50	NA	SD4
	Oil & Grease	mg/L	Lab Analysis		0						10	NA	
	pH	pH	In situ		0						6.5-8.5	NA	
13	TSS	mg/L	Lab Analysis	Upon discharge	0	<i>No discharge occurred during sampling period</i>					50	NA	SD2
	Oil & Grease	mg/L	Lab Analysis		0						10	NA	
	pH	pH	In situ		0						6.5-8.5	NA	
18	TSS	mg/L	Lab Analysis	Upon discharge	0	<i>No discharge occurred during sampling period</i>					50	NA	SD7
	Oil & Grease	mg/L	Lab Analysis		0						10	NA	
	pH	pH	In situ		0						6.5-8.5	NA	
24	TDS	mg/L	Lab Analysis	Upon discharge	0	<i>Namoi discharge point – Not constructed or currently utilised.</i>					350	NA	NR1
	pH	pH	In situ		0						6.5-8.5	NA	
27	TSS	mg/L	Lab Analysis	Upon discharge	0	<i>No discharge occurred during sampling period</i>					50	NA	SD8
	Oil & Grease	mg/L	Lab Analysis		0						10	NA	
	pH	pH	In situ		0						6.5-8.5	NA	
43	TSS	mg/L	Lab Analysis	Upon discharge	0	<i>No discharge occurred during sampling period</i>					50	No ^a	SD9
	Oil & Grease	mg/L	Lab Analysis		0						10	No	
	pH	pH	In situ		0						6.5-8.5	No	



Table 3 – Quarterly Attended Noise Monitoring results summary table

Nosie monitoring not scheduled in February 2025. Next scheduled sampling is for March 2025.

EPL ID	Date	Measured Levels – dB(A) Leq 15min Day	Measured Levels – dB(A) Leq 15min Evening	Measured Levels – dB(A) Leq 15min Night	Measured Levels – dB(A) LA1 (1 min) Night	Limit(s)	Measurement Periods	Weather Compliant Conditions (D/E/N)	Compliant (Yes/No)	Date Obtained
N5						<u>Day, Evening & Night:</u> 35 <u>Night</u> <u>LA1 (1 min):</u> 45	Day – 1.5 hrs			
							Evening – 0.5 hrs			
							Night – 1 hr			
N6						<u>Day, Evening & Night:</u> 35 <u>Night</u> <u>LA1 (1 min):</u> 45	Day – 1.5 hrs			
							Evening – 0.5 hrs			
							Night – 1 hr			
N8						<u>Day, Evening & Night:</u> 35 <u>Night</u> <u>LA1 (1 min):</u> 45	Day – 1.5 hrs			
							Evening – 0.5 hrs			
							Night – 1 hr			
N9						<u>Day, Evening & Night:</u> 35 <u>Night</u> <u>LA1 (1 min):</u> 45	Day – 1.5 hrs			
							Evening – 0.5 hrs			
							Night – 1 hr			

Figure 1 – EPL 12789 Monitoring Locations



- LEGEND**
- ML1609
 - Lot boundary
 - Watercourses
 - Monitoring locations**
 - + Surface water quality monitoring
 - + Licensed discharge point
 - ▲ Ambient air quality monitoring
 - Groundwater monitoring - standpipe single
 - Meteorological station
 - Noise monitoring

NARRABRI MINE

Figure 1
EPL 12789 Monitoring Locations
February 2024



NARRABRI MINE – MONTHLY MONITORING SUMMARY

Site Information

EPL No: 12789

EPA Website Link: <http://www.epa.nsw.gov.au/prpoeoapp/ViewPOEOLicence.aspx?DOCID=106922&SYSUID=1&LICID=12789>

Licensee: Narrabri Coal Operations Pty Ltd

Licensee Address: Narrabri Mine, 10 Kurrajong Creek Road, BAAN BAA NSW 2390

EPL Monitoring Points: See Figure 1 below

Sampling Period: March 2025

Obtained Date: 15.04.2025

Publication Date: 17.04.2025



Table 1 – No Pollutant Limits Apply

EPL ID	Pollutant	Units of Measure	Sample Method	Monitoring Frequency	No. of Samples for the Month	Dates Sampled	Date Obtained	Min Value	Mean Value	Median Value	Max or Only Value
ND3	Deposited Matter	g/m ² /month	Lab Analysis	Once a month (min. 4 weeks)	1	13/03/2025	26/03/2025	NA	NA	NA	0.4
11 (SD4)	Conductivity	µs/cm	In situ	Upon discharge (within 12 hours)	1	30/03/2025	7/04/2025	NA	NA	NA	361
	TOC	mg/L	Lab Analysis		1	30/03/2025	7/04/2025	NA	NA	NA	14
13 (SD2)	Conductivity	µs/cm	In situ	Upon discharge (within 12 hours)	1	29/03/2025	7/04/2025	NA	NA	NA	416
	TOC	mg/L	Lab Analysis		1	29/03/2025	7/04/2025	NA	NA	NA	12
14 (KC1US)	Conductivity	µs/cm	In situ	In the event of flow during the quarter & after each wet weather discharge from points 11, 13, 18,27, 43	1	30/03/2025	7/04/2025	NA	NA	NA	26.13
	TOC	mg/L	Lab Analysis		1	30/03/2025	7/04/2025	NA	NA	NA	18
	Oil & Grease	mg/L	Lab Analysis		1	30/03/2025	7/04/2025	NA	NA	NA	<5
	pH	pH	In situ		1	30/03/2025	7/04/2025	NA	NA	NA	7.46
	TSS	mg/L	Lab Analysis		1	30/03/2025	7/04/2025	NA	NA	NA	52
15 (KC1DS)	Conductivity	µs/cm	In situ	In the event of flow during the quarter & after each wet weather discharge from points 11, 13, 18,27, 43	1	30/03/2025	7/04/2025	NA	NA	NA	237
	TOC	mg/L	Lab Analysis		1	30/03/2025	7/04/2025	NA	NA	NA	16
	Oil & Grease	mg/L	Lab Analysis		1	30/03/2025	7/04/2025	NA	NA	NA	<5
	pH	pH	In situ		1	30/03/2025	7/04/2025	NA	NA	NA	8.34
	TSS	mg/L	Lab Analysis		1	30/03/2025	7/04/2025	NA	NA	NA	226



16 (KC2US)	Conductivity	µs/cm	In situ	In the event of flow during the quarter & after each wet weather discharge from points 11, 13, 18,27, 43	1	29/03/2025	7/04/2025	NA	NA	NA	26.25
	TOC	mg/L	Lab Analysis		1	29/03/2025	7/04/2025	NA	NA	NA	10
	Oil & Grease	mg/L	Lab Analysis		1	29/03/2025	7/04/2025	NA	NA	NA	<5
	pH	pH	In situ		1	29/03/2025	7/04/2025	NA	NA	NA	7.05
	TSS	mg/L	Lab Analysis		1	29/03/2025	7/04/2025	NA	NA	NA	130
17 (KC2DS)	Conductivity	µs/cm	In situ	In the event of flow during the quarter & after each wet weather discharge from points 11, 13, 18,27,43	1	29/03/2025	7/04/2025	NA	NA	NA	447
	TOC	mg/L	Lab Analysis		1	29/03/2025	7/04/2025	NA	NA	NA	9
	Oil & Grease	mg/L	Lab Analysis		1	29/03/2025	7/04/2025	NA	NA	NA	<5
	pH	pH	In situ		1	29/03/2025	7/04/2025	NA	NA	NA	8.05
	TSS	mg/L	Lab Analysis		1	29/03/2025	7/04/2025	NA	NA	NA	81
18 (SD7)	Conductivity	µs/cm	In Situ	Upon discharge (within 12 hours)	<i>No discharge occurred during sampling period (SD7)</i>						
	TOC	mg/L	Lab Analysis								
19 (KCUS)	Conductivity	µs/cm	In situ	In the event of flow during the quarter & after each wet weather discharge from points 11, 13, 18,27,43	1	29/03/2025	7/04/2025	NA	NA	NA	Probe error
	TOC	mg/L	Lab Analysis		1	29/03/2025	7/04/2025	NA	NA	NA	10
	Oil & Grease	mg/L	Lab Analysis		1	29/03/2025	7/04/2025	NA	NA	NA	<5
	pH	pH	In situ		1	29/03/2025	7/04/2025	NA	NA	NA	7.79
	TSS	mg/L	Lab Analysis		1	29/03/2025	7/04/2025	NA	NA	NA	456
20 (KCDS)	Conductivity	µs/cm	In situ	In the event of flow during the quarter &	1	31/03/2025	11/04/2025	NA	NA	NA	359
	TOC	mg/L	Lab Analysis		1	31/03/2025	11/04/2025	NA	NA	NA	25

	Oil & Grease	mg/L	Lab Analysis	after each wet weather discharge from points 11, 13, 18,27,43	1	31/03/2025	11/04/2025	NA	NA	NA	<5
	pH	pH	In situ		1	31/03/2025	11/04/2025	NA	NA	NA	7.54
	TSS	mg/L	Lab Analysis		1	31/03/2025	11/04/2025	NA	NA	NA	12
21 (PCa)	Conductivity	µs/cm	In situ	In the event of flow during the quarter & after each wet weather discharge from points 11, 13, 18,27,43	1	1/04/2025	10/04/2025	No access in March. Sampled when access was available (1/4/2025)			122
	TOC	mg/L	Lab Analysis		1	1/04/2025	10/04/2025				17
	Oil & Grease	mg/L	Lab Analysis		1	1/04/2025	10/04/2025				<5
	pH	pH	In situ		1	1/04/2025	10/04/2025				7.48
	TSS	mg/L	Lab Analysis		1	1/04/2025	10/04/2025				63
22 (PC1)	Conductivity	µs/cm	In situ	In the event of flow during the quarter & after each wet weather discharge from points 11, 13, 18,27,43	1	31/03/2025	11/04/2025	NA	NA	NA	100.1
	TOC	mg/L	Lab Analysis		1	31/03/2025	11/04/2025	NA	NA	NA	14
	Oil & Grease	mg/L	Lab Analysis		1	31/03/2025	11/04/2025	NA	NA	NA	<5
	pH	pH	In situ		1	31/03/2025	11/04/2025	NA	NA	NA	7.12
	TSS	mg/L	Lab Analysis		1	31/03/2025	11/04/2025	NA	NA	NA	49
24 (NR1)	pH	pH	In situ	Upon Discharge (within 4 hrs)	<i>Namoi discharge point – Not constructed or currently utilised (NR1)</i>						
	TDS	mg/L	Lab Analysis								
25 (NRUS)	pH	pH	In situ	Upon Discharge (within 4 hrs)	<i>Namoi discharge point – Not constructed or currently utilised (NRUS)</i>						
	TDS	mg/L	Lab Analysis								
26 (NRDS)	pH	pH	In situ	Upon Discharge (within 4 hrs)	<i>Namoi discharge point – Not constructed or currently utilised (NRDS)</i>						
	TDS	mg/L	Lab Analysis								
28 (P28)	Conductivity	µs/cm	In situ	Quarterly	0						
	pH	pH	In situ		0						

	SWL	mbtoc	In situ		0	<i>Not scheduled for sampling during sampling period</i>
	Bicarbonate	mg/L	Lab Analysis		0	
	Calcium	mg/L	Lab Analysis		0	
	Carbonate	mg/L	Lab Analysis		0	
	Chloride	mg/L	Lab Analysis		0	
	Magnesium	mg/L	Lab Analysis		0	
	Potassium	mg/L	Lab Analysis		0	
	Sodium	mg/L	Lab Analysis		0	
	Sulphate	mg/L	Lab Analysis		0	
29 (P29)	Conductivity	µs/cm	In situ	Quarterly	0	<i>Not scheduled for sampling during sampling period</i>
	pH	pH	In situ		0	
	SWL	mbtoc	In situ		0	
	Bicarbonate	mg/L	Lab Analysis		0	
	Calcium	mg/L	Lab Analysis		0	
	Carbonate	mg/L	Lab Analysis		0	
	Chloride	mg/L	Lab Analysis		0	
	Magnesium	mg/L	Lab Analysis		0	
	Potassium	mg/L	Lab Analysis		0	
	Sodium	mg/L	Lab Analysis		0	

	Sulphate	mg/L	Lab Analysis		0	
30 (P30)	Conductivity	µs/cm	In situ	Quarterly	0	<i>Not scheduled for sampling during sampling period</i>
	pH	pH	In situ		0	
	SWL	mbtoc	In situ		0	
	Bicarbonate	mg/L	Lab Analysis		0	
	Calcium	mg/L	Lab Analysis		0	
	Carbonate	mg/L	Lab Analysis		0	
	Chloride	mg/L	Lab Analysis		0	
	Magnesium	mg/L	Lab Analysis		0	
	Potassium	mg/L	Lab Analysis		0	
	Sodium	mg/L	Lab Analysis		0	
	Sulphate	mg/L	Lab Analysis		0	
31 (P31)	Conductivity	µs/cm	In situ	Quarterly	0	<i>Not scheduled for sampling during sampling period</i>
	pH	pH	In situ		0	
	SWL	mbtoc	In situ		0	
	Bicarbonate	mg/L	Lab Analysis		0	
	Calcium	mg/L	Lab Analysis		0	
	Carbonate	mg/L	Lab Analysis		0	
	Chloride	mg/L	Lab Analysis		0	

	Magnesium	mg/L	Lab Analysis		0	
	Potassium	mg/L	Lab Analysis		0	
	Sodium	mg/L	Lab Analysis		0	
	Sulphate	mg/L	Lab Analysis		0	
32 (P32)	Conductivity	µs/cm	In situ	Quarterly	0	<i>Not scheduled for sampling during sampling period</i>
	pH	pH	In situ		0	
	SWL	mbtoc	In situ		0	
	Bicarbonate	mg/L	Lab Analysis		0	
	Calcium	mg/L	Lab Analysis		0	
	Carbonate	mg/L	Lab Analysis		0	
	Chloride	mg/L	Lab Analysis		0	
	Magnesium	mg/L	Lab Analysis		0	
	Potassium	mg/L	Lab Analysis		0	
	Sodium	mg/L	Lab Analysis		0	
	Sulphate	mg/L	Lab Analysis		0	
	33 (P33)	Conductivity	µs/cm		In situ	
pH		pH	In situ	0		
SWL		mbtoc	In situ	0		
Bicarbonate		mg/L	Lab Analysis	0		
Calcium		mg/L	Lab Analysis	0		

	Carbonate	mg/L	Lab Analysis		0	
	Chloride	mg/L	Lab Analysis		0	
	Magnesium	mg/L	Lab Analysis		0	
	Potassium	mg/L	Lab Analysis		0	
	Sodium	mg/L	Lab Analysis		0	
	Sulphate	mg/L	Lab Analysis		0	
34 (P34)	Conductivity	µs/cm	In situ	Quarterly	0	<i>Not scheduled for sampling during sampling period</i>
	pH	pH	In situ		0	
	SWL	mbtoc	In situ		0	
	Bicarbonate	mg/L	Lab Analysis		0	
	Calcium	mg/L	Lab Analysis		0	
	Carbonate	mg/L	Lab Analysis		0	
	Chloride	mg/L	Lab Analysis		0	
	Magnesium	mg/L	Lab Analysis		0	
	Potassium	mg/L	Lab Analysis		0	
	Sodium	mg/L	Lab Analysis		0	
	Sulphate	mg/L	Lab Analysis		0	
35 (P58)	Conductivity	µs/cm	In situ	Quarterly	0	
	pH	pH	In situ		0	
	SWL	mbtoc	In situ		0	

	Bicarbonate	mg/L	Lab Analysis		0	<i>Not scheduled for sampling during sampling period</i>
	Calcium	mg/L	Lab Analysis		0	
	Carbonate	mg/L	Lab Analysis		0	
	Chloride	mg/L	Lab Analysis		0	
	Magnesium	mg/L	Lab Analysis		0	
	Potassium	mg/L	Lab Analysis		0	
	Sodium	mg/L	Lab Analysis		0	
	Sulfate	mg/L	Lab Analysis		0	
36 (P83)	Conductivity	µs/cm	In situ	Quarterly	0	<i>Not scheduled for sampling during sampling period</i>
	pH	pH	In situ		0	
	SWL	mbtoc	In situ		0	
	Bicarbonate	mg/L	Lab Analysis		0	
	Calcium	mg/L	Lab Analysis		0	
	Carbonate	mg/L	Lab Analysis		0	
	Chloride	mg/L	Lab Analysis		0	
	Magnesium	mg/L	Lab Analysis		0	
	Potassium	mg/L	Lab Analysis		0	
	Sodium	mg/L	Lab Analysis		0	
	Sulphate	mg/L	Lab Analysis		0	

37 (P84)	Conductivity	µs/cm	In situ	Quarterly	0	<i>Not scheduled for sampling during sampling period</i>
	pH	pH	In situ		0	
	SWL	mbtoc	In situ		0	
	Bicarbonate	mg/L	Lab Analysis		0	
	Calcium	mg/L	Lab Analysis		0	
	Carbonate	mg/L	Lab Analysis		0	
	Chloride	mg/L	Lab Analysis		0	
	Magnesium	mg/L	Lab Analysis		0	
	Potassium	mg/L	Lab Analysis		0	
	Sodium	mg/L	Lab Analysis		0	
	Sulphate	mg/L	Lab Analysis		0	
38 (P85)	Conductivity	µs/cm	In situ	Quarterly	0	<i>Not scheduled for sampling during sampling period</i>
	pH	pH	In situ		0	
	SWL	mbtoc	In situ		0	
	Bicarbonate	mg/L	Lab Analysis		0	
	Calcium	mg/L	Lab Analysis		0	
	Carbonate	mg/L	Lab Analysis		0	
	Chloride	mg/L	Lab Analysis		0	
	Magnesium	mg/L	Lab Analysis		0	
	Potassium	mg/L	Lab Analysis		0	

	Sodium	mg/L	Lab Analysis		0	
	Sulfate	mg/L	Lab Analysis		0	
39 (P88)	Conductivity	µs/cm	In situ	Quarterly	0	<i>Not scheduled for sampling during sampling period</i>
	pH	pH	In situ		0	
	SWL	mbtoc	In situ		0	
	Bicarbonate	mg/L	Lab Analysis		0	
	Calcium	mg/L	Lab Analysis		0	
	Carbonate	mg/L	Lab Analysis		0	
	Chloride	mg/L	Lab Analysis		0	
	Magnesium	mg/L	Lab Analysis		0	
	Potassium	mg/L	Lab Analysis		0	
	Sodium	mg/L	Lab Analysis		0	
	Sulfate	mg/L	Lab Analysis		0	
40 (P89)	Conductivity	µs/cm	In situ	Quarterly	0	<i>Not scheduled for sampling during sampling period</i>
	pH	pH	In situ		0	
	SWL	mbtoc	In situ		0	
	Bicarbonate	mg/L	Lab Analysis		0	
	Calcium	mg/L	Lab Analysis		0	
	Carbonate	mg/L	Lab Analysis		0	
	Chloride	mg/L	Lab Analysis		0	

	Magnesium	mg/L	Lab Analysis		0						
	Potassium	mg/L	Lab Analysis		0						
	Sodium	mg/L	Lab Analysis		0						
	Sulphate	mg/L	Lab Analysis		0						
43 (SD9)	Conductivity	µs/cm	In situ	Upon discharge (within 12 hours)	1	29/03/2025	07/04/2025	NA	NA	NA	154
	TOC	mg/L	Lab Analysis		1	29/03/2025	07/04/2025	NA	NA	NA	4
44 (KCTOP)	Conductivity	µs/cm	In situ	In the event of flow during the quarter & after each wet weather discharge from points 11, 13, 18,27,43	1	29/03/2025	07/04/2025	NA	NA	NA	9.19
	TOC	mg/L	Lab Analysis		1	29/03/2025	07/04/2025	NA	NA	NA	9
	Oil & Grease	mg/L	Lab Analysis		1	29/03/2025	07/04/2025	NA	NA	NA	<5
	pH	pH	In situ		1	29/03/2025	07/04/2025	NA	NA	NA	6.95
	TSS	mg/L	Lab Analysis		1	29/03/2025	07/04/2025	NA	NA	NA	154

Table 2 - Pollutant Limits Apply (Water)

EPL ID	Pollutant	Units of Measure	Sample Method	Monitoring Frequency	No. of Samples for the Month	Date Sampled	Date Obtained	Min Value	Mean Value	Max or Only Value	EPL Limit	Exceedance (Yes/No)	Comments (Mine Site Sample ID)
11	TSS	mg/L	Lab Analysis	Upon discharge	1	30/03/2025	07/04/2025	NA	NA	156	50	No ^a	SD4
	Oil & Grease	mg/L	Lab Analysis		1	30/03/2025	07/04/2025	NA	NA	<5	10	No	
	pH	pH	In situ		1	30/03/2025	07/04/2025	NA	NA	8.38	6.5-8.5	No	
13	TSS	mg/L	Lab Analysis	Upon discharge	1	29/03/2025	07/04/2025	NA	NA	98	50	No ^a	SD2
	Oil & Grease	mg/L	Lab Analysis		1	29/03/2025	07/04/2025	NA	NA	<5	10	No	
	pH	pH	In situ		1	29/03/2025	07/04/2025	NA	NA	8.34	6.5-8.5	No	
18	TSS	mg/L	Lab Analysis	Upon discharge	0	<i>No discharge occurred during sampling period</i>					50	NA	SD7
	Oil & Grease	mg/L	Lab Analysis		0						10	NA	
	pH	pH	In situ		0						6.5-8.5	NA	
24	TDS	mg/L	Lab Analysis	Upon discharge	0	<i>Namoi discharge point – Not constructed or currently utilised.</i>					350	NA	NR1
	pH	pH	In situ		0						6.5-8.5	NA	
27	TSS	mg/L	Lab Analysis	Upon discharge	0	<i>No discharge occurred during sampling period</i>					50	NA	SD8
	Oil & Grease	mg/L	Lab Analysis		0						10	NA	
	pH	pH	In situ		0						6.5-8.5	NA	
43	TSS	mg/L	Lab Analysis	Upon discharge	1	29/03/2025	07/04/2025	NA	NA	772	50	No ^a	SD9
	Oil & Grease	mg/L	Lab Analysis		1	29/03/2025	07/04/2025	NA	NA	<5	10	No	
	pH	pH	In situ		1	29/03/2025	07/04/2025	NA	NA	7.98	6.5-8.5	No	

^a Total Suspended Solids (TSS) concentration limit did not apply as per EPL12789 Condition L2.5(a) as the controlled discharge occurred solely because of rainfall exceeding 38.4mm over a consecutive 5-day period (triggered 28/03/2025).

Table 3 – Quarterly Attended Noise Monitoring results summary table

EPL ID	Date	Measured Levels – dB(A) Leq 15min Day	Measured Levels – dB(A) Leq 15min Evening	Measured Levels – dB(A) Leq 15min Night	Measured Levels – dB(A) LA1 (1 min) Night	Limit(s)	Measurement Periods	Weather Compliant Conditions (D/E/N)			Compliant (Yes/No)	Date Obtained
								D	E	N		
N5 ¹	24/03/2025 ²	N/M	I/A	25	28	<u>Day, Evening & Night:</u> 35 <u>Night</u> <u>LA1 (1 min):</u> 45	Day – 1.5 hrs	N	Y	Y	Y	15/04/2025
	25/03/2025 ²	I/A	32	27	36		Evening – 0.5 hrs	N	Y	Y	Y	
	26/03/2025 ²	I/A	20	I/A	I/A		Night – 1 hr	N	Y	Y	Y	
N6	24/03/2025 ²	30	26	20	23	<u>Day, Evening & Night:</u> 35 <u>Night</u> <u>LA1 (1 min):</u> 45	Day – 1.5 hrs	Y	Y	Y	Y	
	25/03/2025 ²	N/M	N/M	30	39		Evening – 0.5 hrs	N	Y	Y	Y	
	26/03/2025 ²	30	N/M	N/M	N/M		Night – 1 hr	Y	Y	Y	Y	
N8 ¹	24/03/2025 ²	32	I/A	I/A	I/A	<u>Day, Evening & Night:</u> 35 <u>Night</u> <u>LA1 (1 min):</u> 45	Day – 1.5 hrs	N	Y	Y	Y	
	25/03/2025 ²	I/A	N/M	N.M	N/M		Evening – 0.5 hrs	N	Y	Y	Y	
	26/03/2025 ²	I/A	25	30	32		Night – 1 hr	N	Y	Y	Y	
N9	24/03/2025 ²	32	I/A	I/A	I/A	<u>Day, Evening & Night:</u> 35 <u>Night</u> <u>LA1 (1 min):</u> 45	Day – 1.5 hrs	Y	Y	Y	Y	
	25/03/2025 ²	I/A	I/A	30	34		Evening – 0.5 hrs	N	Y	Y	Y	
	26/03/2025 ²	I/A	I/A	I/A	I/A		Night – 1 hr	Y	Y	Y	Y	

I/A = Inaudible, N/M = Not Measurable

Note 1: Property is owned by Narrabri Coal Operations. Noise limits contained in Conditions 1-3, Schedule 4 of PA 08_0144 Mod 2 and the identical limits contained in condition L3 of Environment Protection Licence No 12789 are not applicable.

Note 2: Evening and Night monitoring conducted on this date, Day monitoring conducted during the following day period

Figure 1 – EPL 12789 Monitoring Locations



- LEGEND**
- ML1609
 - Lot boundary
 - Watercourses
 - Monitoring locations**
 - + Surface water quality monitoring
 - + Licensed discharge point
 - ▲ Ambient air quality monitoring
 - Groundwater monitoring - standpipe single
 - Meteorological station
 - Noise monitoring

NARRABRI MINE

Figure 1
EPL 12789 Monitoring Locations
February 2024



NARRABRI MINE – MONTHLY MONITORING SUMMARY

Site Information

EPL No: 12789

EPA Website Link: <http://www.epa.nsw.gov.au/prpoeoapp/ViewPOEOLicence.aspx?DOCID=106922&SYSUID=1&LICID=12789>

Licensee: Narrabri Coal Operations Pty Ltd

Licensee Address: Narrabri Mine, 10 Kurrajong Creek Road, BAAN BAA NSW 2390

EPL Monitoring Points: See Figure 1 below

Sampling Period: April 2025

Obtained Date: 29.04.2025

Publication Date: 16.05.2025



Table 1 – No Pollutant Limits Apply

EPA ID	Pollutant	Units of Measure	Sample Method	Monitoring Frequency	No. of Samples for the Month	Dates Sampled	Date Obtained	Min Value	Mean Value	Median Value	Max or Only Value
ND3	Deposited Matter	g/m ² /month	Lab Analysis	Once a month (min. 4 weeks)	1	11/04/2025	29/04/2025	NA	NA	NA	0.4
11 (SD4)	Conductivity	µs/cm	In situ	Upon discharge (within 12 hours)	<i>No discharge occurred during sampling period (SD4)</i>						
	TOC	mg/L	Lab Analysis								
13 (SD2)	Conductivity	µs/cm	In situ	Upon discharge (within 12 hours)	1	03/04/2025	10/04/2025	NA	NA	NA	314
	TOC	mg/L	Lab Analysis		1	03/04/2025	10/04/2025	NA	NA	NA	13
14 (KC1US)	Conductivity	µs/cm	In situ	In the event of flow during the quarter & after each wet weather discharge from points 11, 13, 18,27, 43	<i>No discharge occurred during sampling period of EPA 11</i>						
	TOC	mg/L	Lab Analysis								
	Oil & Grease	mg/L	Lab Analysis								
	pH	pH	In situ								
15 (KC1DS)	TSS	mg/L	Lab Analysis	In the event of flow during the quarter & after each wet weather discharge from points 11, 13, 18,27, 43	<i>No discharge occurred during sampling period of EPA 11</i>						
	Conductivity	µs/cm	In situ								
	TOC	mg/L	Lab Analysis								
	Oil & Grease	mg/L	Lab Analysis								
	pH	pH	In situ								
	TSS	mg/L	Lab Analysis								

16 (KC2US)	Conductivity	µs/cm	In situ	In the event of flow during the quarter & after each wet weather discharge from points 11, 13, 18,27, 43	1	03/04/2025	10/04/2025	NA	NA	NA	74.9
	TOC	mg/L	Lab Analysis		1	03/04/2025	10/04/2025	NA	NA	NA	14
	Oil & Grease	mg/L	Lab Analysis		1	03/04/2025	10/04/2025	NA	NA	NA	<5
	pH	pH	In situ		1	03/04/2025	10/04/2025	NA	NA	NA	7.15
	TSS	mg/L	Lab Analysis		1	03/04/2025	10/04/2025	NA	NA	NA	10
17 (KC2DS)	Conductivity	µs/cm	In situ	In the event of flow during the quarter & after each wet weather discharge from points 11, 13, 18,27,43	1	03/04/2025	10/04/2025	NA	NA	NA	104.3
	TOC	mg/L	Lab Analysis		1	03/04/2025	10/04/2025	NA	NA	NA	14
	Oil & Grease	mg/L	Lab Analysis		1	03/04/2025	10/04/2025	NA	NA	NA	<5
	pH	pH	In situ		1	03/04/2025	10/04/2025	NA	NA	NA	7.25
	TSS	mg/L	Lab Analysis		1	03/04/2025	10/04/2025	NA	NA	NA	17
18 (SD7)	Conductivity	µs/cm	In Situ	Upon discharge (within 12 hours)	<i>No discharge occurred during sampling period (SD7)</i>						
	TOC	mg/L	Lab Analysis								
19 (KCUS)	Conductivity	µs/cm	In situ	In the event of flow during the quarter & after each wet weather discharge from points 11, 13, 18,27,43	<i>Sampled prior to discharge of EPA 43 (29.03.2025)</i>						
	TOC	mg/L	Lab Analysis								
	Oil & Grease	mg/L	Lab Analysis								
	pH	pH	In situ								
	TSS	mg/L	Lab Analysis								
20 (KCDS)	Conductivity	µs/cm	In situ	In the event of flow during the quarter &	<i>Ambient flow sampled (31.03.2025) following significant rain event trigger (28.03.2025)</i>						
	TOC	mg/L	Lab Analysis								

	Oil & Grease	mg/L	Lab Analysis	after each wet weather discharge from points 11, 13, 18,27,43		
	pH	pH	In situ			
	TSS	mg/L	Lab Analysis			
21 (PCa)	Conductivity	µs/cm	In situ	In the event of flow during the quarter & after each wet weather discharge from points 11, 13, 18,27,43	<i>Ambient flow sampled (31.03.2025) following significant rain event trigger (28.03.2025)</i>	
	TOC	mg/L	Lab Analysis			
	Oil & Grease	mg/L	Lab Analysis			
	pH	pH	In situ			
	TSS	mg/L	Lab Analysis			
22 (PC1)	Conductivity	µs/cm	In situ	In the event of flow during the quarter & after each wet weather discharge from points 11, 13, 18,27,43	<i>Ambient flow sampled (31.03.2025) following significant rain event trigger (28.03.2025)</i>	
	TOC	mg/L	Lab Analysis			
	Oil & Grease	mg/L	Lab Analysis			
	pH	pH	In situ			
	TSS	mg/L	Lab Analysis			
24 (NR1)	pH	pH	In situ	Upon Discharge (within 4 hrs)	<i>Namoi discharge point – Not constructed or currently utilised (NR1)</i>	
	TDS	mg/L	Lab Analysis			
25 (NRUS)	pH	pH	In situ	Upon Discharge (within 4 hrs)	<i>Namoi discharge point – Not constructed or currently utilised (NRUS)</i>	
	TDS	mg/L	Lab Analysis			
26 (NRDS)	pH	pH	In situ	Upon Discharge (within 4 hrs)	<i>Namoi discharge point – Not constructed or currently utilised (NRDS)</i>	
	TDS	mg/L	Lab Analysis			
28 (P28)	Conductivity	µs/cm	In situ	Quarterly	0	
	pH	pH	In situ		0	

	SWL	mbtoc	In situ		0	<i>Not scheduled for sampling during sampling period</i>
	Bicarbonate	mg/L	Lab Analysis		0	
	Calcium	mg/L	Lab Analysis		0	
	Carbonate	mg/L	Lab Analysis		0	
	Chloride	mg/L	Lab Analysis		0	
	Magnesium	mg/L	Lab Analysis		0	
	Potassium	mg/L	Lab Analysis		0	
	Sodium	mg/L	Lab Analysis		0	
	Sulphate	mg/L	Lab Analysis		0	
29 (P29)	Conductivity	µs/cm	In situ	Quarterly	0	<i>Not scheduled for sampling during sampling period</i>
	pH	pH	In situ		0	
	SWL	mbtoc	In situ		0	
	Bicarbonate	mg/L	Lab Analysis		0	
	Calcium	mg/L	Lab Analysis		0	
	Carbonate	mg/L	Lab Analysis		0	
	Chloride	mg/L	Lab Analysis		0	
	Magnesium	mg/L	Lab Analysis		0	
	Potassium	mg/L	Lab Analysis		0	
	Sodium	mg/L	Lab Analysis		0	

	Sulphate	mg/L	Lab Analysis		0	
30 (P30)	Conductivity	µs/cm	In situ	Quarterly	0	<i>Not scheduled for sampling during sampling period</i>
	pH	pH	In situ		0	
	SWL	mbtoc	In situ		0	
	Bicarbonate	mg/L	Lab Analysis		0	
	Calcium	mg/L	Lab Analysis		0	
	Carbonate	mg/L	Lab Analysis		0	
	Chloride	mg/L	Lab Analysis		0	
	Magnesium	mg/L	Lab Analysis		0	
	Potassium	mg/L	Lab Analysis		0	
	Sodium	mg/L	Lab Analysis		0	
	Sulphate	mg/L	Lab Analysis		0	
31 (P31)	Conductivity	µs/cm	In situ	Quarterly	0	<i>Not scheduled for sampling during sampling period</i>
	pH	pH	In situ		0	
	SWL	mbtoc	In situ		0	
	Bicarbonate	mg/L	Lab Analysis		0	
	Calcium	mg/L	Lab Analysis		0	
	Carbonate	mg/L	Lab Analysis		0	
	Chloride	mg/L	Lab Analysis		0	

	Magnesium	mg/L	Lab Analysis		0	
	Potassium	mg/L	Lab Analysis		0	
	Sodium	mg/L	Lab Analysis		0	
	Sulphate	mg/L	Lab Analysis		0	
32 (P32)	Conductivity	µs/cm	In situ	Quarterly	0	<i>Not scheduled for sampling during sampling period</i>
	pH	pH	In situ		0	
	SWL	mbtoc	In situ		0	
	Bicarbonate	mg/L	Lab Analysis		0	
	Calcium	mg/L	Lab Analysis		0	
	Carbonate	mg/L	Lab Analysis		0	
	Chloride	mg/L	Lab Analysis		0	
	Magnesium	mg/L	Lab Analysis		0	
	Potassium	mg/L	Lab Analysis		0	
	Sodium	mg/L	Lab Analysis		0	
	Sulphate	mg/L	Lab Analysis		0	
	33 (P33)	Conductivity	µs/cm		In situ	
pH		pH	In situ	0		
SWL		mbtoc	In situ	0		
Bicarbonate		mg/L	Lab Analysis	0		
Calcium		mg/L	Lab Analysis	0		

	Carbonate	mg/L	Lab Analysis		0	
	Chloride	mg/L	Lab Analysis		0	
	Magnesium	mg/L	Lab Analysis		0	
	Potassium	mg/L	Lab Analysis		0	
	Sodium	mg/L	Lab Analysis		0	
	Sulphate	mg/L	Lab Analysis		0	
34 (P34)	Conductivity	µs/cm	In situ	Quarterly	0	<i>Not scheduled for sampling during sampling period</i>
	pH	pH	In situ		0	
	SWL	mbtoc	In situ		0	
	Bicarbonate	mg/L	Lab Analysis		0	
	Calcium	mg/L	Lab Analysis		0	
	Carbonate	mg/L	Lab Analysis		0	
	Chloride	mg/L	Lab Analysis		0	
	Magnesium	mg/L	Lab Analysis		0	
	Potassium	mg/L	Lab Analysis		0	
	Sodium	mg/L	Lab Analysis		0	
	Sulphate	mg/L	Lab Analysis		0	
35 (P58)	Conductivity	µs/cm	In situ	Quarterly	0	
	pH	pH	In situ		0	
	SWL	mbtoc	In situ		0	



	Bicarbonate	mg/L	Lab Analysis		0	<i>Not scheduled for sampling during sampling period</i>
	Calcium	mg/L	Lab Analysis		0	
	Carbonate	mg/L	Lab Analysis		0	
	Chloride	mg/L	Lab Analysis		0	
	Magnesium	mg/L	Lab Analysis		0	
	Potassium	mg/L	Lab Analysis		0	
	Sodium	mg/L	Lab Analysis		0	
	Sulfate	mg/L	Lab Analysis		0	
36 (P83)	Conductivity	µs/cm	In situ	Quarterly	0	<i>Not scheduled for sampling during sampling period</i>
	pH	pH	In situ		0	
	SWL	mbtoc	In situ		0	
	Bicarbonate	mg/L	Lab Analysis		0	
	Calcium	mg/L	Lab Analysis		0	
	Carbonate	mg/L	Lab Analysis		0	
	Chloride	mg/L	Lab Analysis		0	
	Magnesium	mg/L	Lab Analysis		0	
	Potassium	mg/L	Lab Analysis		0	
	Sodium	mg/L	Lab Analysis		0	
	Sulphate	mg/L	Lab Analysis		0	

37 (P84)	Conductivity	µs/cm	In situ	Quarterly	0	<i>Not scheduled for sampling during sampling period</i>
	pH	pH	In situ		0	
	SWL	mbtoc	In situ		0	
	Bicarbonate	mg/L	Lab Analysis		0	
	Calcium	mg/L	Lab Analysis		0	
	Carbonate	mg/L	Lab Analysis		0	
	Chloride	mg/L	Lab Analysis		0	
	Magnesium	mg/L	Lab Analysis		0	
	Potassium	mg/L	Lab Analysis		0	
	Sodium	mg/L	Lab Analysis		0	
	Sulphate	mg/L	Lab Analysis		0	
38 (P85)	Conductivity	µs/cm	In situ	Quarterly	0	<i>Not scheduled for sampling during sampling period</i>
	pH	pH	In situ		0	
	SWL	mbtoc	In situ		0	
	Bicarbonate	mg/L	Lab Analysis		0	
	Calcium	mg/L	Lab Analysis		0	
	Carbonate	mg/L	Lab Analysis		0	
	Chloride	mg/L	Lab Analysis		0	
	Magnesium	mg/L	Lab Analysis		0	
	Potassium	mg/L	Lab Analysis		0	



	Sodium	mg/L	Lab Analysis		0	
	Sulfate	mg/L	Lab Analysis		0	
39 (P88)	Conductivity	µs/cm	In situ	Quarterly	0	<i>Not scheduled for sampling during sampling period</i>
	pH	pH	In situ		0	
	SWL	mbtoc	In situ		0	
	Bicarbonate	mg/L	Lab Analysis		0	
	Calcium	mg/L	Lab Analysis		0	
	Carbonate	mg/L	Lab Analysis		0	
	Chloride	mg/L	Lab Analysis		0	
	Magnesium	mg/L	Lab Analysis		0	
	Potassium	mg/L	Lab Analysis		0	
	Sodium	mg/L	Lab Analysis		0	
	Sulfate	mg/L	Lab Analysis		0	
40 (P89)	Conductivity	µs/cm	In situ	Quarterly	0	<i>Not scheduled for sampling during sampling period</i>
	pH	pH	In situ		0	
	SWL	mbtoc	In situ		0	
	Bicarbonate	mg/L	Lab Analysis		0	
	Calcium	mg/L	Lab Analysis		0	
	Carbonate	mg/L	Lab Analysis		0	
	Chloride	mg/L	Lab Analysis		0	

	Magnesium	mg/L	Lab Analysis		0	
	Potassium	mg/L	Lab Analysis		0	
	Sodium	mg/L	Lab Analysis		0	
	Sulphate	mg/L	Lab Analysis		0	
43 (SD9)	Conductivity	µs/cm	In situ	Upon discharge (within 12 hours)	0	<i>Discharge commenced 29.03.2025, ceased 04.04.2025</i>
	TOC	mg/L	Lab Analysis		0	
44 (KCTOP)	Conductivity	µs/cm	In situ	In the event of flow during the quarter & after each wet weather discharge from points 11, 13, 18,27,43	0	<i>Sampled prior to discharge of EPA 43 (29.03.2025)</i>
	TOC	mg/L	Lab Analysis		0	
	Oil & Grease	mg/L	Lab Analysis		0	
	pH	pH	In situ		0	
	TSS	mg/L	Lab Analysis		0	

Table 2 - Pollutant Limits Apply (Water)

EPL ID	Pollutant	Units of Measure	Sample Method	Monitoring Frequency	No. of Samples for the Month	Date Sampled	Date Obtained	Min Value	Mean Value	Max or Only Value	EPL Limit	Exceedance (Yes/No)	Comments (Mine Site Sample ID)
11	TSS	mg/L	Lab Analysis	Upon discharge	0	<i>No discharge occurred during sampling period</i>					50	No ^a	SD4
	Oil & Grease	mg/L	Lab Analysis		0						10	No	
	pH	pH	In situ		0						6.5-8.5	No	
13	TSS	mg/L	Lab Analysis	Upon discharge	1	03/04/2025	10/10/2025	NA	NA	51	50	No ^a	SD2
	Oil & Grease	mg/L	Lab Analysis		1	03/04/2025	10/10/2025	NA	NA	<5	10	No	
	pH	pH	In situ		1	03/04/2025	10/10/2025	NA	NA	8.12	6.5-8.5	No	
18	TSS	mg/L	Lab Analysis	Upon discharge	0	<i>No discharge occurred during sampling period</i>					50	NA	SD7
	Oil & Grease	mg/L	Lab Analysis		0						10	NA	
	pH	pH	In situ		0						6.5-8.5	NA	
24	TDS	mg/L	Lab Analysis	Upon discharge	0	<i>Namoi discharge point – Not constructed or currently utilised.</i>					350	NA	NR1
	pH	pH	In situ		0						6.5-8.5	NA	
27	TSS	mg/L	Lab Analysis	Upon discharge	0	<i>No discharge occurred during sampling period</i>					50	NA	SD8
	Oil & Grease	mg/L	Lab Analysis		0						10	NA	
	pH	pH	In situ		0						6.5-8.5	NA	
43	TSS	mg/L	Lab Analysis	Upon discharge	0	Discharge commenced 29.03.2025, ceased 04.04.2025					50	No ^a	SD9
	Oil & Grease	mg/L	Lab Analysis		0						10	No	
	pH	pH	In situ		0						6.5-8.5	No	

^a Total Suspended Solids (TSS) concentration limit did not apply as per EPL12789 Condition L2.5(a) as the controlled discharge occurred solely because of rainfall exceeding 38.4mm over a consecutive 5-day period (triggered 28/03/2025).



Table 3 – Quarterly Attended Noise Monitoring results summary table

Nosie monitoring not scheduled in April 2025. Next scheduled sampling is for June 2025.

EPL ID	Date	Measured Levels – dB(A)	Measured Levels – dB(A)	Measured Levels – dB(A)	Measured Levels – dB(A)	Limit(s)	Measurement Periods	Weather Compliant Conditions (D/E/N)			Compliant (Yes/No)	Date Obtained
		L _{eq} 15min Day	L _{eq} 15min Evening	L _{eq} 15min Night	L _{A1} (1 min) Night							
N5						<u>Day, Evening & Night:</u> 35 <u>Night</u> <u>L_{A1} (1 min):</u> 45	Day – 1.5 hrs					
							Evening – 0.5 hrs					
								Night – 1 hr				
N6						<u>Day, Evening & Night:</u> 35 <u>Night</u> <u>L_{A1} (1 min):</u> 45	Day – 1.5 hrs					
							Evening – 0.5 hrs					
								Night – 1 hr				
N8						<u>Day, Evening & Night:</u> 35 <u>Night</u> <u>L_{A1} (1 min):</u> 45	Day – 1.5 hrs					
							Evening – 0.5 hrs					
								Night – 1 hr				
N9						<u>Day, Evening & Night:</u> 35 <u>Night</u> <u>L_{A1} (1 min):</u> 45	Day – 1.5 hrs					
							Evening – 0.5 hrs					
								Night – 1 hr				

Figure 1 – EPL 12789 Monitoring Locations



- LEGEND**
- ML1609
 - Lot boundary
 - Watercourses
 - Monitoring locations**
 - + Surface water quality monitoring
 - + Licensed discharge point
 - ▲ Ambient air quality monitoring
 - Groundwater monitoring - standpipe single
 - Meteorological station
 - Noise monitoring

NARRABRI MINE

Figure 1
EPL 12789 Monitoring Locations
February 2024