

Data range of report		1/01/2025 to 31/03/2025	Rainfall Depth (mm)	284.6
Dam Name		HWD8		
Latest field data			ML	
pH		Minimum sensor level		
EC	us/cm	Minimum pump level		
TSS	mg/L	Spillway		
OG	mg/L	Current level		
Notes				
<i>In accordance with the approved Water Management Plan, the catchment of HWD8 has been disturbed as part of mine progression and HWD8 is no longer a clean water dam</i>				
HWD Recorded Data				



Data range of report	1/01/2025 to 31/03/2025	Rainfall Depth (mm)	284.6
----------------------	-------------------------	---------------------	-------

Dam Name	HWD9
----------	------

Latest field data		ML
pH		Minimum sensor level
EC	us/cm	Minimum pump level
TSS	mg/L	Spillway
OG	mg/L	Current level

Notes

In accordance with the approved Water Management Plan, the catchment of HWD9 has been disturbed as part of mine progression and HWD9 is no longer a clean water dam

HWD Recorded Data



Data range of report	1/01/2025 to 31/03/2025	Rainfall Depth (mm)	284.6
----------------------	-------------------------	---------------------	-------

Dam Name	HWD10
----------	-------

Latest field data			
pH		Minimum sensor level	
EC	us/cm	Minimum pump level	
TSS	mg/L	Spillway	
OG	mg/L	Current level	

Notes

In accordance with the approved Water Management Plan, the catchment of HWD10 has been disturbed as part of mine progression and HWD10 is no longer a clean water dam



Data range of report 1/01/2025 to 31/03/2025 Rainfall Depth (mm) 284.6

Dam Name

HWD11

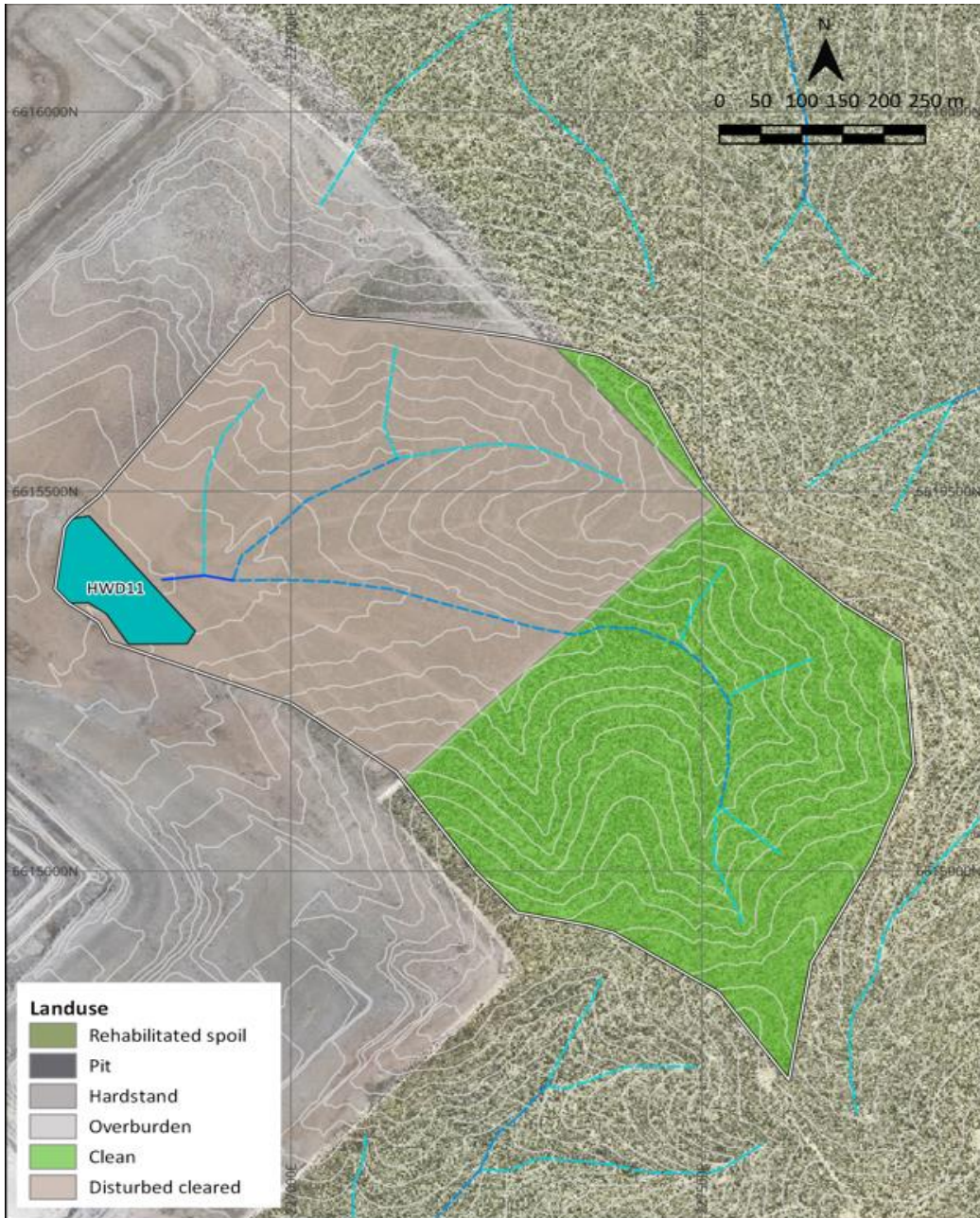
Latest field data

ML

pH		Minimum sensor level	
EC	us/cm	Minimum pump level	
TSS	mg/L	Spillway	
OG	mg/L	Current level	

Notes

In accordance with the approved Water Management Plan, the catchment of HWD11 has been disturbed as part of mine progression and HWD11 is no longer a clean water dam



Title: HWD11 2024 Catchment and Landuse Mapping

Project: Maules Creek Coal Mine Highwall Dams

HydroBalance

Legend

- Mine Water Dam
- Sediment Dam
- Raw/Clean Water Dam
- Catchment
- Ground contour (5m interval)

Stream order

- First order
- Second order
- Third order
- Fourth order
- Fifth order
- Sixth order+

Data range of report	1/01/2025 to 31/03/2025	Rainfall Depth (mm)	284.6
-----------------------------	--------------------------------	----------------------------	--------------

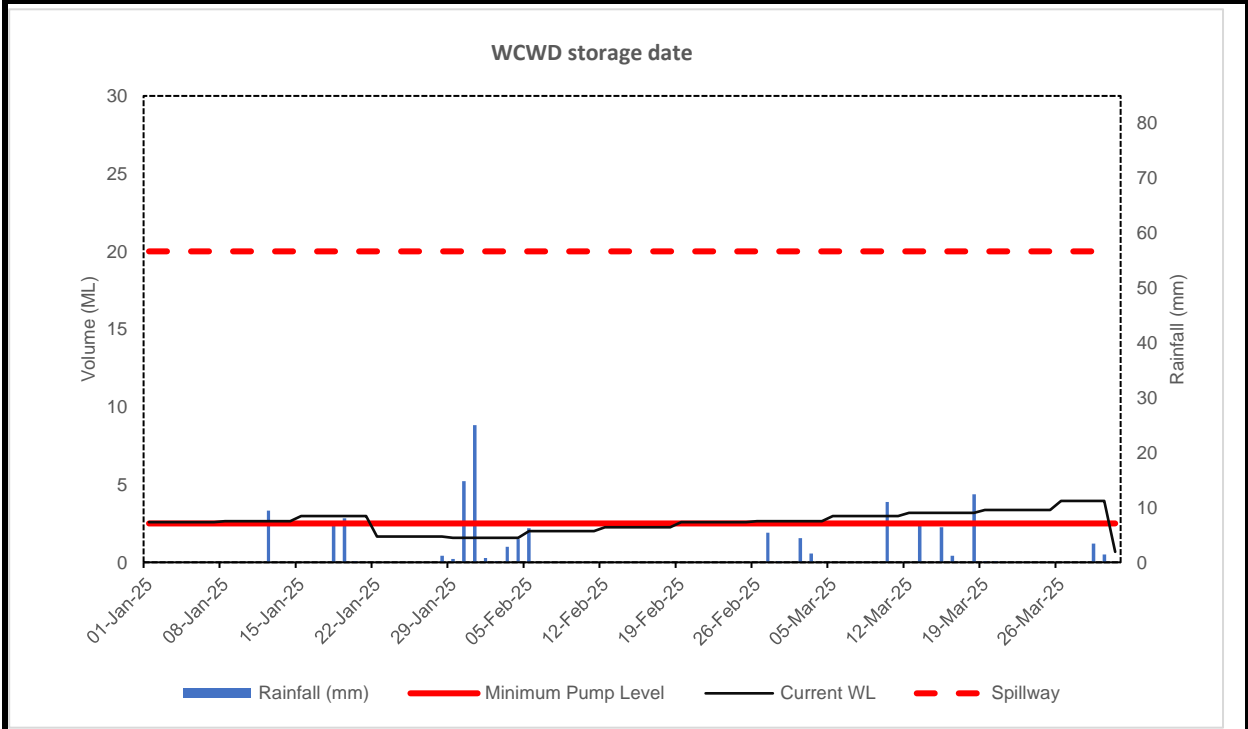
Dam Name

WCWD

Latest field data				ML
pH		8.2	Minimum sensor level	0.4
EC	us/cm	320	Minimum pump level	3.8
TSS	mg/L	38	Spillway	20.0
OG	mg/L	31	Current level	0.7

Notes

2.9 ML of inflows compared to 1.4 ML pumped to site as water quality exceeded EPL conditions. And 22.7ML pumped discharged as water quality and rainfall amount met EPL conditions.



Latest Photo



