



MAULES CREEK COAL MINE – MONTHLY MONITORING SUMMARY

Site Information

EPL No: 20221

EPA Website Link: [Hyperlink to Maules Creek Coal, Environment Protection Licence](#)

Licensee: Maules Creek Coal Mine Pty Ltd

Licensee Address: Maules Creek Coal Mine, Therribri Road, BOGGABRI NSW 2382

EPL Monitoring Points: See Figure 1 below

Sampling Period: April 2022

Obtained Date: 13th May 2022

Publication Date: 16th May 2022

Context: This Monthly Monitoring Summary aligns with the Environment Protection Licence (EPL) No. 20221 – Maules Creek Coal Mine issued 7th March 2018 by the NSW Environment Protection Authority (EPA).

Monthly Monitoring Summary

Table 1 - Wet Weather Discharge - Surface Water Monitoring

ID EPL (Site)	Parameter	Units	Frequency	Samples	Date	Laboratory Results Received	Min Value	Mean Value	Median Value	Max / Only Value
3 (SD3)	TSS	mg/L	Special Frequency Discharge only							No discharge at these locations this month
	Conductivity	µs/cm								
	Oil & Grease	mg/L								
	pH	pH								
36 (SD12)	TSS	mg/L	Special Frequency Discharge only							
	Conductivity	µs/cm								
	Oil & Grease	mg/L								
	pH	pH								

Table 2 - Surface Water Monitoring - Mine Void

ID EPL (Site)	Parameter	Units	Frequency	Samples	Date	Laboratory Results Received	Min	Mean	Max / Only Value
12 (Mine Void)	TSS	mg/L	Every 2 months						
	Conductivity	µs/cm							
	Oil & Grease	mg/L							
	pH	pH							

Next Sample May 2022

Table 3 – Groundwater Quality Monitoring

ID EPL (Bore)	Parameters	Units	Frequency	Samples	Date	Laboratory Results Received	Min	Mean	Max / Only Value															
15 (BCM01)	pH	pH	Quarterly	0																				
	Conductivity	µs/cm																						
	TDS	mg/L																						
16 (BCM03)	pH	pH	Quarterly	0																				
	Conductivity	µs/cm																						
	TDS	mg/L																						
17 (REG10A)	pH	pH	Quarterly	0																				
	Conductivity	µs/cm																						
	TDS	mg/L																						
24 (RB05A)	pH	pH	Quarterly	0																				
	Conductivity	µs/cm																						
	TDS	mg/L																						

Next sample in June 2022

Table 4 – Noise Monitoring (Attended – Measured)

MCC ID	Date	Start Time	Wind Speed (m/s)	MCCP LAeq 15min dB	Limit LAeq 15min (dB) Operations Criteria	MCCP LAeq 1min dB	Limit LA1 (1 min) (dB) Operations Criteria	Weather Rain (mm)	Exceedance (Yes / No)
NM1	12/04/2022	23:30	0.4	IA	35	IA	45	0.0	No
NM2	12/04/2022	23:00	0.1	28	39	31	45	0.0	No
NM3	12/04/2022	23:32	0.3	IA	35	IA	45	0.0	No
NM4	12/04/2022	22:30	0.8	26	35	32	45	0.0	No
NM5	13/04/2022	00:00	0.6	IA	35	IA	45	0.0	No
NM6	12/04/2022	23:00	0.5	25	35	28	45	0.0	No

MCC ID = Locations as per the EPL No.20221.

ND = No data due to high prevailing winds during the attended noise monitoring event.

Italicised text indicates wind speed exceeds the 3.0m/s maximum for noise monitoring.

NM = Not Measurable. If site noise is noted as NM, <20 dB or <30 dB, this means some noise was audible but could not be quantified.

IA = Site noise was inaudible at the monitoring location.

N/A in exceedance column means criterion was not applicable due to atmospheric conditions outside those specified in the project approval.

Table 5 - Noise Monitoring (Attended - Low Frequency Assessment)

None of the measurements satisfied the conditions for further assessment when assessed for the applicability of low frequency modification factors in accordance with the EPA's Noise Policy for Industry. Therefore no further assessment of low frequency noise was required to be undertaken.

Table 6 – Blast Monitoring (Blasts – Limits Apply)

Location	Parameter	Units	Frequency	Number	Average	Max	100% Limit	Exceedance (Yes / No)
Operations Blasts	Overpressure	Db (Lin Peak)	All	6	93.25	107.9	120	No
	Vibration	mm/s		6	0.13	0.29	10	No

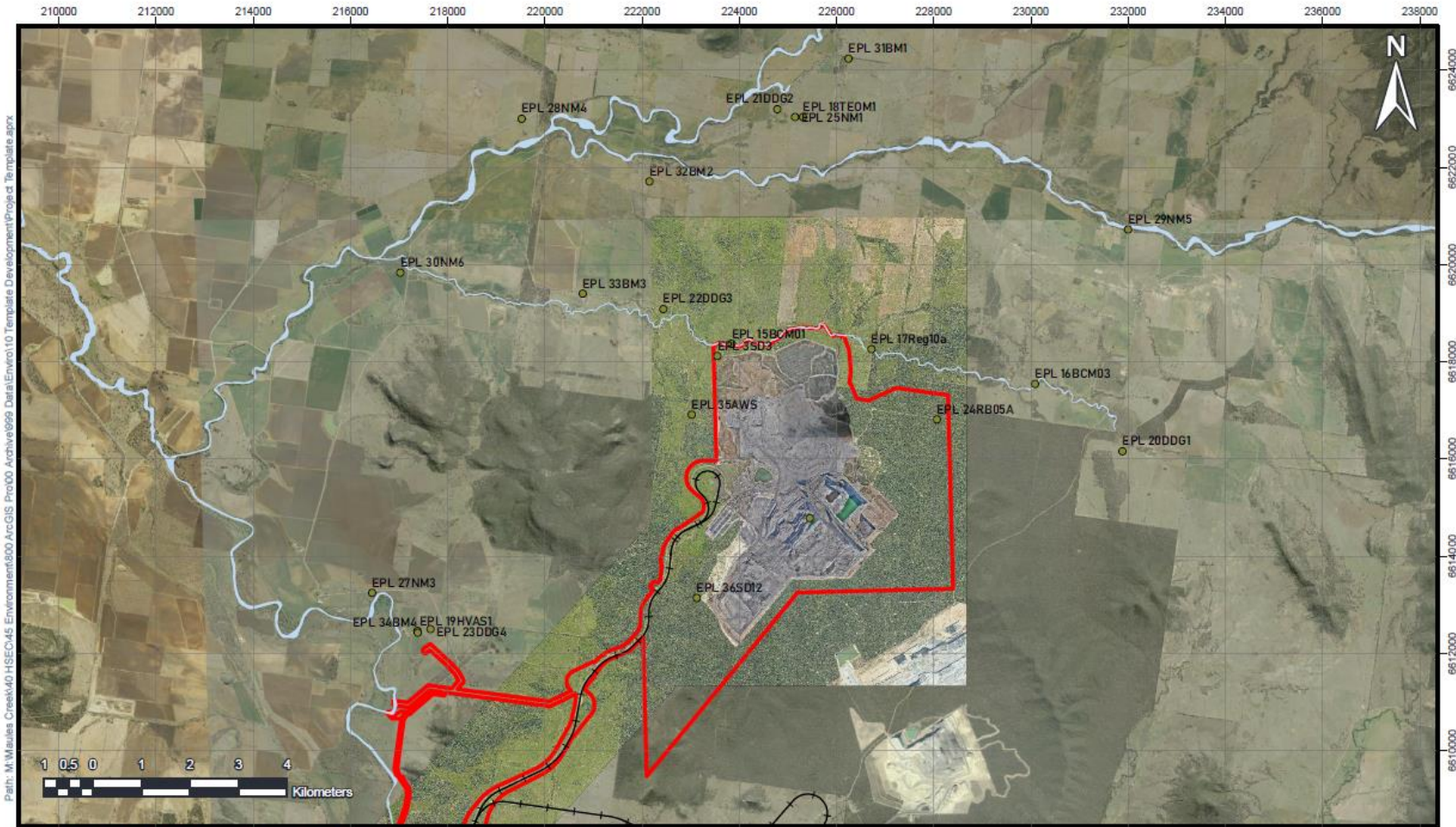
Note: As of March 2018, in accordance with the requirements of the approved variation of EPL 20221; M7.1 blast monitoring results are for four blast monitoring points 31 (BM1), 32 (BM2), 33 (BM3) and 34 (BM4).

Table 7 – Dust Monitoring (Limits Apply)

ID EPL (Site)	Sample period	Unit	Parameter	Rolling Annual Average	NEPM Annual Criteria	Exceedance (Yes / No)
18 (TEOM1)	Continuous	µg/m ³ month	PM ₁₀	5.6	30	No
19 (HVAS)	5 days	µg/m ³	PM ₁₀	8.8	30	No

ID EPL (Site)	Sample period	Particulates Deposited Matter	Rolling Annual Average Insoluble Solids	Criteria	Exceedance (Yes / No)
20 (DDG1/MC1)	Monthly	g/m ² month	1.6	4	No
21 (DDG2/MC2)	Monthly	g/m ² month	1.5	4	No
22 (DDG3/MC3)	Monthly	g/m ² month	1.6	4	No
23 (DDG4/MC4)	Monthly	g/m ² month	1.3	4	No

Figure 1 - EPL 20221 Monitoring Locations



Path: \\M:\Maules Creek\401\HSEC\45 Environment\600 ArcGIS Pro\100 Archive\699 Draft\Environ\10 Template Development\Project Template.aprx

EPL20221 Monitoring Locations

Legend

- PA Boundary
- Project Boundary
- EPL Monitoring Locations
- Railway
- Waterways

Scale: 1:105,390
 Author: AFrend
 Date Exported: 16/05/2022
 Spatial Reference: GDA 2020 MGA Zone 56

Maules Creek Coal



Disclaimer: Map for reference only and subject to survey. MCC makes no guarantee of the accuracy of this map and data within. MCC shall have no liability for any decisions made or actions taken based upon this map.