



## MAULES CREEK COAL MINE – MONTHLY MONITORING SUMMARY

### Site Information

**EPL No:** 20221

**EPA Website Link:** [Hyperlink to Maules Creek Coal, Environment Protection Licence](#)

**Licensee:** Maules Creek Coal Mine Pty Ltd

**Licensee Address:** Maules Creek Coal Mine, Therribri Road, BOGGABRI NSW 2382

**EPL Monitoring Points:** Figure 1

**Sampling Period:** May 2014

Context: This Monthly Monitoring Summary aligns with the applicable Environment Protection Licence (EPL) – Maules Creek Coal Mine issued 5<sup>th</sup> February 2014 by the NSW Environment Protection Authority (EPA).

## Monthly Monitoring Summary

Table 1 – Wet Weather Discharge - Surface Water Monitoring

EPL ID	Parameter	Units	Frequency	Samples	Date	Laboratory Results Received	Min Value	Mean Value	Median Value	Max / Only Value
SD1	TSS	mg/L	Special Frequency Discharge only	0	No discharge event this month.					
	Conductivity	µs/cm		0						
	Oil & Grease	mg/L		0						
	pH	pH		0						
SD2	TSS	mg/L	Special Frequency Discharge only	0						
	Conductivity	µs/cm		0						
	Oil & Grease	mg/L		0						
	pH	pH		0						
SD3	TSS	mg/L	Special Frequency Discharge only	0						
	Conductivity	µs/cm		0						
	Oil & Grease	mg/L		0						
	pH	pH		0						
SD4	TSS	mg/L	Special Frequency Discharge only	0						
	Conductivity	µs/cm		0						
	Oil & Grease	mg/L		0						
	pH	pH		0						
SD5	TSS	mg/L	Special Frequency Discharge only	0						
	Conductivity	µs/cm		0						
	Oil & Grease	mg/L		0						
	pH	pH		0						
SD6	TSS	mg/L	Special Frequency Discharge only	0						
	Conductivity	µs/cm		0						
	Oil & Grease	mg/L		0						
	pH	pH		0						
SD7	TSS	mg/L	Special Frequency Discharge only	0						
	Conductivity	µs/cm		0						
	Oil & Grease	mg/L		0						
	pH	pH		0						
SD8 (a)	TSS	mg/L	Special Frequency Discharge only	0						
	Conductivity	µs/cm		0						
	Oil & Grease	mg/L		0						
	pH	pH		0						

EPL ID	Parameter	Units	Frequency	Samples	Date	Laboratory Results Received	Min Value	Mean Value	Median Value	Max / Only Value												
SD8 (b)	TSS	mg/L	Special Frequency Discharge only	0																		
	Conductivity	µs/cm		0																		
	Oil & Grease	mg/L		0																		
	pH	pH		0																		
SD8 (c)	TSS	mg/L	Special Frequency Discharge only	0																		
	Conductivity	µs/cm		0																		
	Oil & Grease	mg/L		0																		
	pH	pH		0																		
SD8 (d)	TSS	mg/L	Special Frequency Discharge only	0																		
	Conductivity	µs/cm		0																		
	Oil & Grease	mg/L		0																		
	pH	pH		0																		

No discharge events this month.

**Table 2 – Noise Monitoring (Attended – Limits Apply)**

MCC ID	Date	Start Time	Wind Speed (m/s)	Measured Levels – dB(A) L <sub>Aeq 15min</sub> Day	Measured Levels – dB(A) L <sub>Aeq 15min</sub> Evening	Measured Levels – dB(A) L <sub>Aeq 15min</sub> Night	Measured Levels – dB(A) L <sub>A1</sub> (1 min) Night	Limit (dB)	Weather	Exceedance (Yes / No)
NM1	15/05/2014	11:26	2.8	IA*				40	No rain	No
NM2	15/05/2014	10:26	2.4	IA				40	No rain	No
NM3	15/05/2014	09:48	2.8	29				40	No rain	No
NM4	15/05/2014	10:57	2.7	IA				40	No rain	No
NM5	15/05/2014	11:53	1.6	IA				40	No rain	No
Gooboobindi	15/05/2014	09:13	2.1	35				45	No rain	No

\* IA = Inaudible

\*\*MCC ID = Locations as per the approved Noise Management Plan.

**Table 3 – Blast Monitoring (Blasts – Limits Apply)**

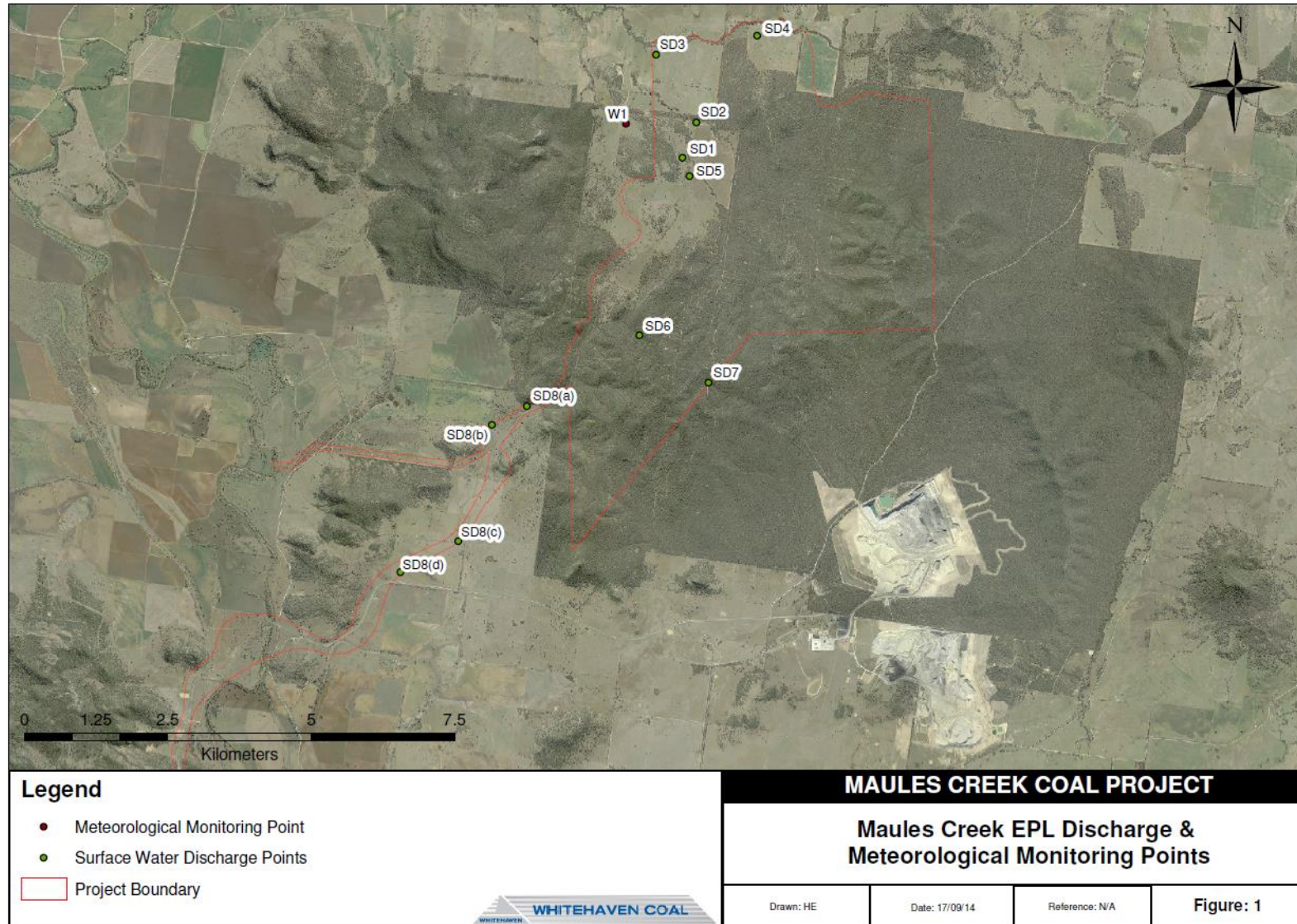
Location	Parameter	Units	Frequency	Number	Average	Max	100% Limit	Exceedance (Yes / No)
Construction Blasts*	Noise	Db (Lin Peak)	All	16	94	106	120	No
	Vibration	mm/s		16	<0.5	<0.5	10	No

\* Monitoring devices used were set at trigger levels of 88Db and 0.5mm/s.

\*\* Only 3 of the 16 blast events triggered a reading at the blast monitoring units.

# Figure

## Figure 1 – EPL 20221 Monitoring Locations





## MAULES CREEK COAL MINE – MONTHLY MONITORING SUMMARY

### Site Information

**EPL No:** 20221

**EPA Website Link:** <http://www.epa.nsw.gov.au/>

**Licensee:** Maules Creek Coal Mine Pty Ltd

**Licensee Address:** Maules Creek Coal Mine, Therribri Road, BOGGABRI NSW 2382

**EPL Monitoring Points:** Figure 1

**Sampling Period:** June 2014

**Publication Date:** 25/9/2014

Context: This Monthly Monitoring Summary aligns with the applicable Environment Protection Licence (EPL) – Maules Creek Coal Mine issued 5<sup>th</sup> February 2014 by the NSW Environment Protection Authority (EPA).

## Monthly Monitoring Summary

**Table 1 - Wet Weather Discharge - Surface Water Monitoring**

EPL ID	Pollutant	Units of Measure	Monitoring Frequency	No. of Samples	Date Sampled	Date Obtained	Min Value	Max or Only Value	100%ile Limit	Exceedance (Yes / No)
SD1	TSS	mg/L	Special Frequency Discharge only	0	No discharge event this month.					
	Conductivity	µs/cm		0						
	Oil & Grease	mg/L		0						
	pH	pH		0						
SD2	TSS	mg/L	Special Frequency Discharge only	0						
	Conductivity	µs/cm		0						
	Oil & Grease	mg/L		0						
	pH	pH		0						
SD3	TSS	mg/L	Special Frequency Discharge only	0						
	Conductivity	µs/cm		0						
	Oil & Grease	mg/L		0						
	pH	pH		0						
SD4	TSS	mg/L	Special Frequency Discharge only	0						
	Conductivity	µs/cm		0						
	Oil & Grease	mg/L		0						
	pH	pH		0						
SD5	TSS	mg/L	Special Frequency Discharge only	0						
	Conductivity	µs/cm		0						
	Oil & Grease	mg/L		0						
	pH	pH		0						
SD6	TSS	mg/L	Special Frequency Discharge only	0						
	Conductivity	µs/cm		0						
	Oil & Grease	mg/L		0						
	pH	pH		0						
SD7	TSS	mg/L	Special Frequency Discharge only	0						
	Conductivity	µs/cm		0						
	Oil & Grease	mg/L		0						
	pH	pH		0						
SD8 (a)	TSS	mg/L	Special Frequency Discharge only	0						
	Conductivity	µs/cm		0						
	Oil & Grease	mg/L		0						
	pH	pH		0						

EPL ID	Pollutant	Units of Measure	Monitoring Frequency	No. of Samples	Date Sampled	Date Obtained	Min Value	Max or Only Value	100%ile Limit	Exceedance (Yes / No)
SD8 (b)	TSS	mg/L	Special Frequency Discharge only	0	No discharge events this month.					
	Conductivity	µs/cm		0						
	Oil & Grease	mg/L		0						
	pH	pH		0						
SD8 (c)	TSS	mg/L	Special Frequency Discharge only	0						
	Conductivity	µs/cm		0						
	Oil & Grease	mg/L		0						
	pH	pH		0						
SD8 (d)	TSS	mg/L	Special Frequency Discharge only	0						
	Conductivity	µs/cm		0						
	Oil & Grease	mg/L		0						
	pH	pH		0						

**Table 2 – Noise Monitoring (Attended – Limits Apply)**

MCC ID	Date	Start Time	Wind Speed (mm/s)	Measured Levels – dB(A) Leq 15min Day	Measured Levels – dB(A) Leq 15min Evening	Measured Levels – dB(A) Leq 15min Night	Measured Levels – dB(A) LA1 (1 min) Night	Limit (dB)	Weather	Exceedance (Yes / No)
NM1	12/06/2014	10:09	1.4	IA*	Upon commencement of mining.			40	No rain	No
NM2	12/06/2014	9:07	1.6	21				40	No rain	No
NM3	12/06/2014	11:18	2	21				40	No rain	No
NM4	12/06/2014	9:36	1.5	<20				40	No rain	No
NM5	12/06/2014	10:35	2	IA				40	No rain	No
Goobobindi	12/06/2014	11:48	1.5	24				45	No rain	No

\* IA = Inaudible

\*\*MCC ID = Locations as per the approved Noise Management Plan.

**Table 3 – Blast Monitoring (Blasts – Limits Apply)**

Location	Parameter	Units	Frequency	Number	Average	Max	100% Limit	Exceedance (Yes / No)
Construction Blasts*	Noise	Db (Lin Peak)	All	6	94.6	100	120	No
	Vibration	mm/s		6	<0.5	<0.5	10	No

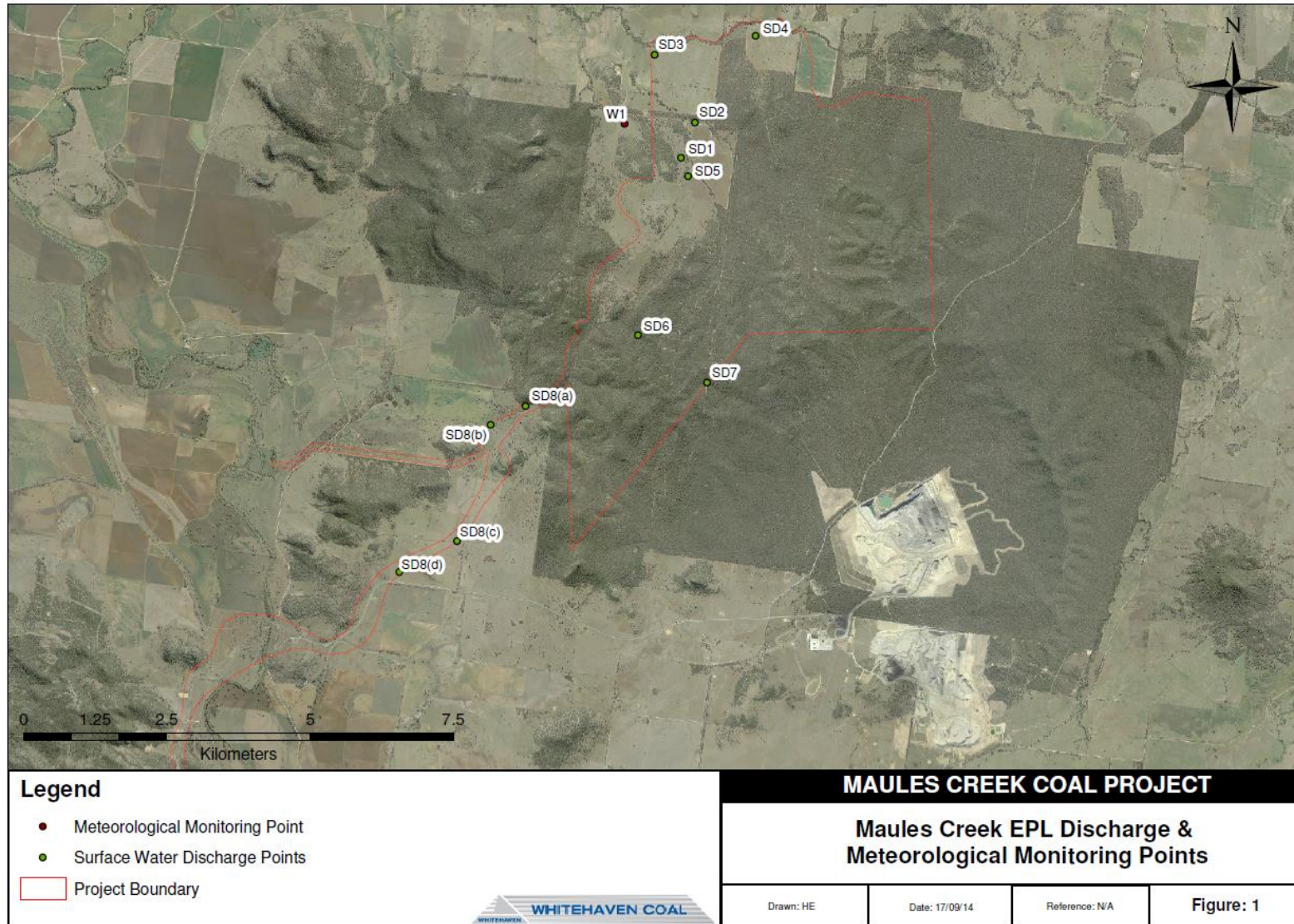
\* Monitoring devices used were set at trigger levels of 88Db and 0.5mm/s.

\*\* Only 2 of the 6 blast events triggered a reading at the blast monitoring units.



# Figure

## Figure 1 – EPL 20221 Monitoring Locations







## MAULES CREEK COAL MINE – MONTHLY MONITORING SUMMARY

### Site Information

**EPL No:** 20221

**EPA Website Link:** <http://www.epa.nsw.gov.au/>

**Licensee:** Maules Creek Coal Mine Pty Ltd

**Licensee Address:** Maules Creek Coal Mine, Therribri Road, BOGGABRI NSW 2382

**EPL Monitoring Points:** Figure 1

**Sampling Period:** July 2014

**Publication Date:** 25/9/2014

Context: This Monthly Monitoring Summary aligns with the applicable Environment Protection Licence (EPL) – Maules Creek Coal Mine issued 5<sup>th</sup> February 2014 by the NSW Environment Protection Authority (EPA).

## Monthly Monitoring Summary

**Table 1 – Wet Weather Discharge - Surface Water Monitoring**

EPL ID	Pollutant	Units of Measure	Monitoring Frequency	No. of Samples	Date Sampled	Date Obtained	Min Value	Max or Only Value	100%ile Limit	Exceedance (Yes/No)
SD1	TSS	mg/L	Special Frequency Discharge only	0	No discharge event this month.					
	Conductivity	µs/cm		0						
	Oil & Grease	mg/L		0						
	pH	pH		0						
SD2	TSS	mg/L	Special Frequency Discharge only	0						
	Conductivity	µs/cm		0						
	Oil & Grease	mg/L		0						
	pH	pH		0						
SD3	TSS	mg/L	Special Frequency Discharge only	0						
	Conductivity	µs/cm		0						
	Oil & Grease	mg/L		0						
	pH	pH		0						
SD4	TSS	mg/L	Special Frequency Discharge only	0						
	Conductivity	µs/cm		0						
	Oil & Grease	mg/L		0						
	pH	pH		0						
SD5	TSS	mg/L	Special Frequency Discharge only	0						
	Conductivity	µs/cm		0						
	Oil & Grease	mg/L		0						
	pH	pH		0						
SD6	TSS	mg/L	Special Frequency Discharge only	0						
	Conductivity	µs/cm		0						
	Oil & Grease	mg/L		0						
	pH	pH		0						
SD7	TSS	mg/L	Special Frequency Discharge only	0						
	Conductivity	µs/cm		0						
	Oil & Grease	mg/L		0						
	pH	pH		0						
SD8 (a)	TSS	mg/L	Special Frequency Discharge only	0						
	Conductivity	µs/cm		0						
	Oil & Grease	mg/L		0						
	pH	pH		0						

EPL ID	Pollutant	Units of Measure	Monitoring Frequency	No. of Samples	Date Sampled	Date Obtained	Min Value	Max or Only Value	100%ile Limit	Exceedance (Yes/No)
SD8 (b)	TSS	mg/L	Special Frequency Discharge only	0						
	Conductivity	µs/cm		0						
	Oil & Grease	mg/L		0						
	pH	pH		0						
SD8 (c)	TSS	mg/L	Special Frequency Discharge only	0						
	Conductivity	µs/cm		0						
	Oil & Grease	mg/L		0						
	pH	pH		0						
SD8 (d)	TSS	mg/L	Special Frequency Discharge only	0						
	Conductivity	µs/cm		0						
	Oil & Grease	mg/L		0						
	pH	pH		0						

No discharge events this month.

**Table 2 – Noise Monitoring (Attended – Limits Apply)**

MCC ID**	Date	Start Time	Wind Speed (mm/s)	Measured Levels – dB(A) Leq 15min Day	Measured Levels – dB(A) Leq 15min Evening	Measured Levels – dB(A) Leq 15min Night	Measured Levels – dB(A) LA1 (1 min) Night	Limit (dB)	Weather	Exceedance (Yes/No)
NM1	23/07/2014	9:25	1.6	<30	Upon commencement of mining.			40	No rain	No
NM2	23/07/2014	8:29	0.5	33				40	No rain	No
NM3	23/07/2014	10:29	1.9	<30				40	No rain	No
NM4	23/07/2014	8:56	1.3	30				40	No rain	No
NM5	23/07/2014	9:49	1.1	28				40	No rain	No
Cooboobindi	23/07/2014	10:56	0.6	<25				45	No rain	No

\* IA = Inaudible,

\*\*MCC ID = Locations as per the approved Noise Management Plan.

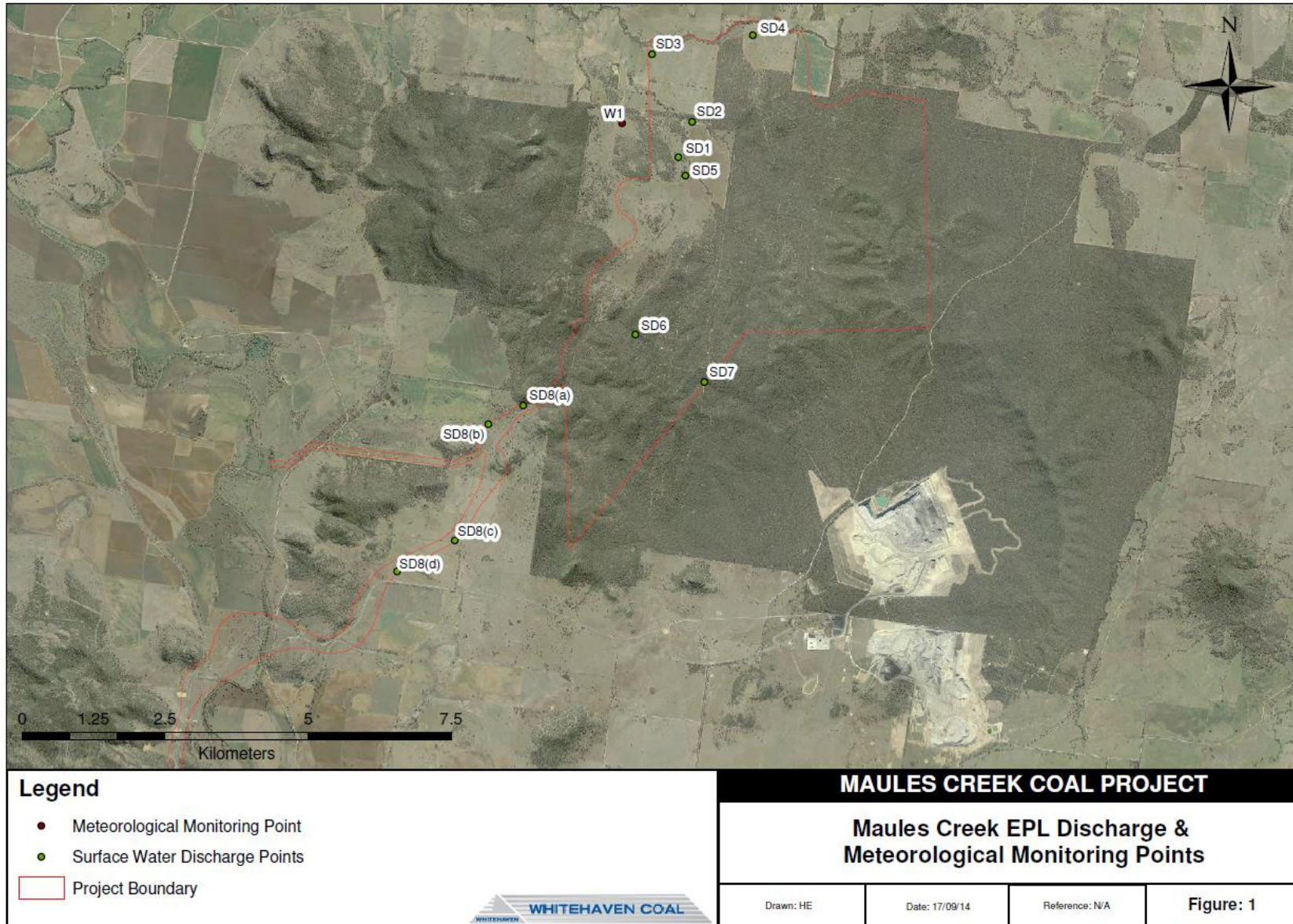
**Table 3 – Blast Monitoring (Blasts – Limits Apply)**

Location	Parameter	Units	Frequency	Number	Average	Max	100% Limit	Exceedance (Yes/No)
Construction Blasts*	Noise	Db (Lin Peak)	All	13	<88	<88	120	No
	Vibration	mm/s		13	<0.5	<0.5	10	No

\* Monitoring devices used were set at trigger levels of 88Db and 0.5mm/s.

# Figure

## Figure 1 – EPL 20221 Monitoring Locations





## MAULES CREEK COAL MINE – MONTHLY MONITORING SUMMARY

### Site Information

**EPL No:** 20221

**EPA Website Link:** [Hyperlink to Maules Creek Coal, Environment Protection Licence](#)

**Licensee:** Maules Creek Coal Mine Pty Ltd

**Licensee Address:** Maules Creek Coal Mine, Therribri Road, BOGGABRI NSW 2382

**EPL Monitoring Points:** Figure 1 Monitoring

**Sampling Period:** August 2014

**Publication Date:** 23 October 2014

Context: This Monthly Monitoring Summary aligns with the applicable Environment Protection Licence (EPL) – Maules Creek Coal Mine issued 5<sup>th</sup> February 2014 by the NSW Environment Protection Authority (EPA).



## Monthly Monitoring Summary

Table 1 - Wet Weather Discharge - Surface Water Monitoring

EPL ID	Parameter	Units	Frequency	Samples	Date	Laboratory Results Received	Min Value	Mean Value	Median Value	Max / Only Value
SD1	TSS	mg/L	Special Frequency Discharge only	0	No discharge event this month.					
	Conductivity	µs/cm		0						
	Oil & Grease	mg/L		0						
	pH	pH		0						
SD2	TSS	mg/L	Special Frequency Discharge only	0						
	Conductivity	µs/cm		0						
	Oil & Grease	mg/L		0						
	pH	pH		0						
SD3	TSS	mg/L	Special Frequency Discharge only	0						
	Conductivity	µs/cm		0						
	Oil & Grease	mg/L		0						
	pH	pH		0						
SD4	TSS	mg/L	Special Frequency Discharge only	0						
	Conductivity	µs/cm		0						
	Oil & Grease	mg/L		0						
	pH	pH		0						
SD5	TSS	mg/L	Special Frequency Discharge only	0						
	Conductivity	µs/cm		0						
	Oil & Grease	mg/L		0						
	pH	pH		0						
SD6	TSS	mg/L	Special Frequency Discharge only	0						
	Conductivity	µs/cm		0						
	Oil & Grease	mg/L		0						
	pH	pH		0						
SD7	TSS	mg/L	Special Frequency Discharge only	0						
	Conductivity	µs/cm		0						
	Oil & Grease	mg/L		0						
	pH	pH		0						
SD8 (a)	TSS	mg/L	Special Frequency Discharge only	0						
	Conductivity	µs/cm		0						
	Oil & Grease	mg/L		0						
	pH	pH		0						

EPL ID	Parameter	Units	Frequency	Samples	Date	Laboratory Results Received	Min Value	Mean Value	Median Value	Max / Only Value												
SD8 (b)	TSS	mg/L	Special Frequency Discharge only	0																		
	Conductivity	µs/cm		0																		
	Oil & Grease	mg/L		0																		
	pH	pH		0																		
SD8 (c)	TSS	mg/L	Special Frequency Discharge only	0																		
	Conductivity	µs/cm		0																		
	Oil & Grease	mg/L		0																		
	pH	pH		0																		
SD8 (d)	TSS	mg/L	Special Frequency Discharge only	0																		
	Conductivity	µs/cm		0																		
	Oil & Grease	mg/L		0																		
	pH	pH		0																		

No discharge events this month.

**Table 2 – Noise Monitoring (Attended – Limits Apply)**

MCC ID	Date	Start Time	Wind Speed (mm/s)	Measured Levels – dB(A) Leq 15min Day	Measured Levels – dB(A) Leq 15min Evening	Measured Levels – dB(A) Leq 15min Night	Measured Levels – dB(A) LA1 (1 min) Night	Limit (dB)	Weather	Exceedance (Yes / No)
NM1	04/09/2014	08:25	1.0	32	Upon commencement of mining.			40	No rain	No
NM2	04/09/2014	09:48	1.8	24				40	No rain	No
NM3	04/09/2014	11:07	2.6	25				40	No rain	No
NM4	04/09/2014	08:52	0.8	29				40	No rain	No
NM5	04/09/2014	08:00	1.5	34				40	No rain	No
Gooboobindi	04/09/2014	11:41	2.0	<25				45	No rain	No

\* IA = Inaudible.

\*\*MCC ID = Locations as per the approved Noise Management Plan. August noise monitoring conducted on 4<sup>th</sup> September.

**Table 3 – Blast Monitoring (Blasts – Limits Apply)**

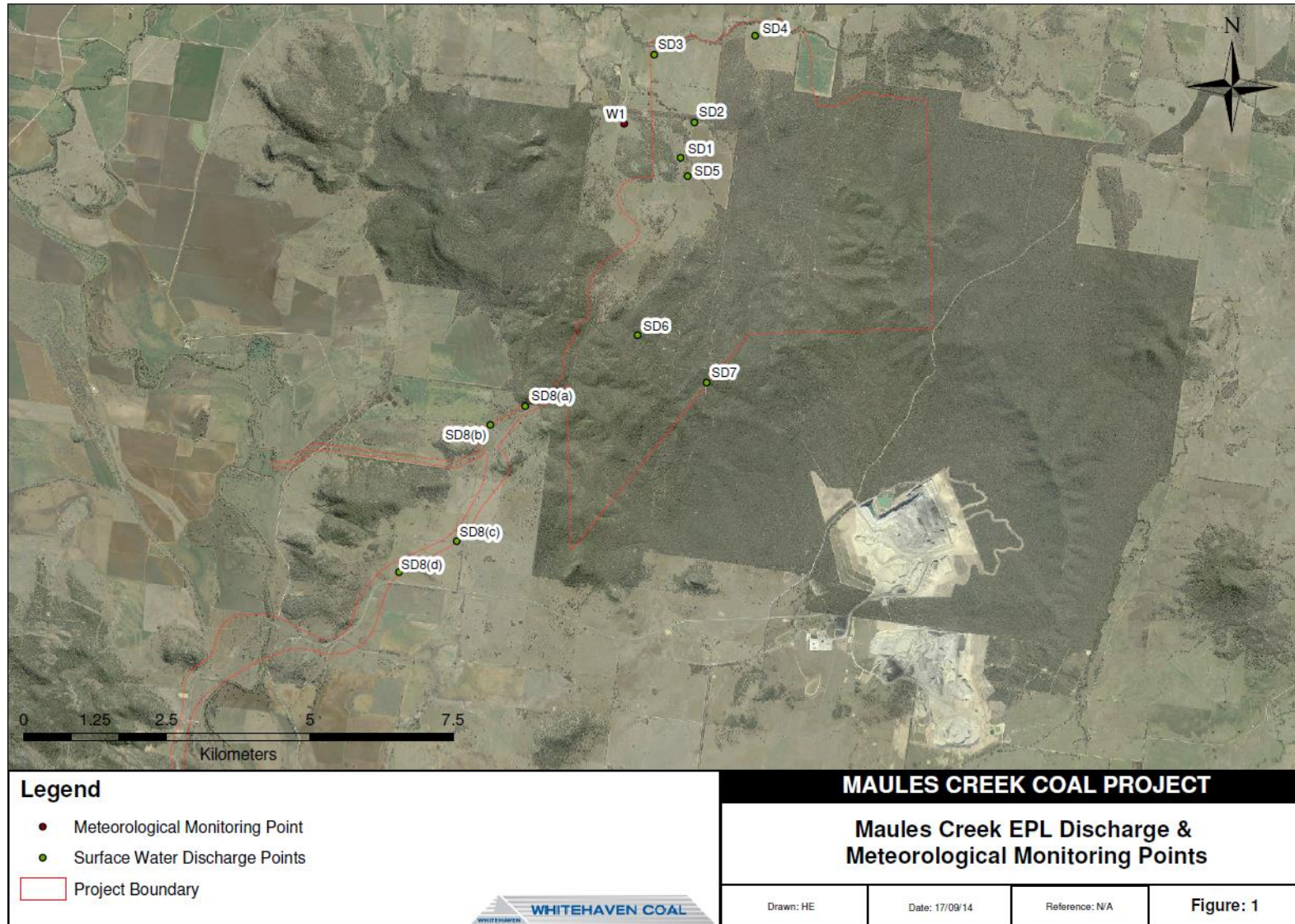
Location	Parameter	Units	Frequency	Number	Average	Max	100% Limit	Exceedance (Yes / No)
Construction Blasts*	Noise	Db (Lin Peak)	All	6	<88	<88	120	No
	Vibration	mm/s		6	<0.5	<0.5	10	No
Operations Blasts	Noise	Db (Lin Peak)	All	4	95.9	102.9	120	No
	Vibration	mm/s		4	0.24	0.35	10	No

\* Monitoring devices used for construction blast monitoring were set at trigger levels of 88Db and 0.5mm/s.

\*\* None of the 6 construction blast events triggered a reading at the blast monitoring units.

# Figures

## Figure 1 – EPL 20221 Monitoring Locations





## MAULES CREEK COAL MINE – MONTHLY MONITORING SUMMARY

### Site Information

**EPL No:** 20221

**EPA Website Link:** [Hyperlink to Maules Creek Coal, Environment Protection Licence](#)

**Licensee:** Maules Creek Coal Mine Pty Ltd

**Licensee Address:** Maules Creek Coal Mine, Therribri Road, BOGGABRI NSW 2382

**EPL Monitoring Points:** Figure 1 Monitoring

**Sampling Period:** September 2014

**Publication Date:** 18 December 2014

Context: This Monthly Monitoring Summary aligns with the applicable Environment Protection Licence (EPL) – Maules Creek Coal Mine issued 5<sup>th</sup> February 2014 by the NSW Environment Protection Authority (EPA).

## Monthly Monitoring Summary

Table 1 – Wet Weather Discharge - Surface Water Monitoring

EPL ID	Parameter	Units	Frequency	Samples	Date	Laboratory Results Received	Min Value	Mean Value	Median Value	Max / Only Value
SD1	TSS	mg/L	Special Frequency Discharge only	0	No discharge event this month.					
	Conductivity	µs/cm		0						
	Oil & Grease	mg/L		0						
	pH	pH		0						
SD2	TSS	mg/L	Special Frequency Discharge only	0						
	Conductivity	µs/cm		0						
	Oil & Grease	mg/L		0						
	pH	pH		0						
SD3	TSS	mg/L	Special Frequency Discharge only	0						
	Conductivity	µs/cm		0						
	Oil & Grease	mg/L		0						
	pH	pH		0						
SD4	TSS	mg/L	Special Frequency Discharge only	0						
	Conductivity	µs/cm		0						
	Oil & Grease	mg/L		0						
	pH	pH		0						
SD5	TSS	mg/L	Special Frequency Discharge only	0						
	Conductivity	µs/cm		0						
	Oil & Grease	mg/L		0						
	pH	pH		0						
SD6	TSS	mg/L	Special Frequency Discharge only	0						
	Conductivity	µs/cm		0						
	Oil & Grease	mg/L		0						
	pH	pH		0						
SD7	TSS	mg/L	Special Frequency Discharge only	0						
	Conductivity	µs/cm		0						
	Oil & Grease	mg/L		0						
	pH	pH		0						
SD8 (a)	TSS	mg/L	Special Frequency Discharge only	0						
	Conductivity	µs/cm		0						
	Oil & Grease	mg/L		0						
	pH	pH		0						



EPL ID	Parameter	Units	Frequency	Samples	Date	Laboratory Results Received	Min Value	Mean Value	Median Value	Max / Only Value
SD8 (b)	TSS	mg/L	Special Frequency Discharge only	0						
	Conductivity	µs/cm		0						
	Oil & Grease	mg/L		0						
	pH	pH		0						
SD8 (c)	TSS	mg/L	Special Frequency Discharge only	0						
	Conductivity	µs/cm		0						
	Oil & Grease	mg/L		0						
	pH	pH		0						
SD8 (d)	TSS	mg/L	Special Frequency Discharge only	0						
	Conductivity	µs/cm		0						
	Oil & Grease	mg/L		0						
	pH	pH		0						

No discharge events this month.

**Table 2 – Noise Monitoring (Attended – Limits Apply)**

### Construction

MCC ID	Date	Start Time	Wind Speed (m/s)	Measured Levels – dB(A) L <sub>Aeq 15min</sub> Day	Measured Levels – dB(A) L <sub>Aeq 15min</sub> Evening	Measured Levels – dB(A) L <sub>Aeq 15min</sub> Night	Measured Levels – dB(A) L <sub>A1</sub> (1 min) Night	Limit (dB) Construction Criteria	Weather	Exceedance (Yes / No)
NM1	19/09/2014	10:59	2.2	IA				40	No rain	No
NM2	19/09/2014	9:03	1.8	23				40	No rain	No
NM3	19/09/2014	8:27	1.3	31				40	No rain	No
NM4	19/09/2014	10:31	1.4	<20				40	No rain	No
NM5	19/09/2014	11:25	1.6	IA				40	No rain	No
Cooboobindi	19/09/2014	8:00	1.3	35				45	No rain	No

### Operations

MCC ID	Date	Start Time	Wind Speed (m/s)	Measured Levels – dB(A) L <sub>Aeq 15min</sub> Day	Measured Levels – dB(A) L <sub>Aeq 15min</sub> Evening	Measured Levels – dB(A) L <sub>Aeq 15min</sub> Night	Measured Levels – dB(A) L <sub>A1</sub> (1 min) Night	Limit (dB) Operations Criteria	Weather	Exceedance (Yes / No)
NM1	29/09/2014	9:02 PM	0.2		<20			35	No rain	No
NM1	30/09/2014	8:45 PM	0.3		IA			35	No rain	No

NM1	29/09/2014	10:27 PM	0.5			<20	23	35	No rain	No
NM1	30/09/2014	10:26 PM	0.3			IA	IA	35	No rain	No
NM2	29/09/2014	8:07 PM	0.9		20			39	No rain	No
NM2	30/09/2014	7:50 PM	0.8		IA			39	No rain	No
NM2	29/09/2014	11:23 PM	0.2			IA	IA	39	No rain	No
NM2	30/09/2014	11:20 PM	2.8			IA	IA	39	No rain	No
NM3	29/09/2014	7:11 PM	0.8		25			35	No rain	No
NM3	30/09/2014	6:54 PM	0.6		<20			35	No rain	No
NM3	30/09/2014	12:23 AM	0.2			28	29	35	No rain	No
NM3	1/10/2014	12:14 AM	1.4			<20	<20	35	No rain	No
NM4	29/09/2014	8:34 PM	0.5		20			35	No rain	No
NM4	30/09/2014	8:17 PM	0.6		IA			35	No rain	No
NM4	29/09/2014	10:55 PM	0.4			<20	<20	35	No rain	No
NM4	30/09/2014	10:53 PM	0.7			IA	IA	35	No rain	No
NM5	29/09/2014	9:27 PM	0.4		<20			35	No rain	No
NM5	30/09/2014	9:14 PM	0.4		IA			35	No rain	No
NM5	29/09/2014	10:01 PM	0.3			<20	23	35	No rain	No
NM5	30/09/2014	10:00 PM	0.5			IA	IA	35	No rain	No
NM6	29/09/2014	7:41 PM	1.0		IA			35	No rain	No
NM6	30/09/2014	7:21 PM	1.4		IA			35	No rain	No
NM6	29/09/2014	11:53 PM	0.1			IA	IA	35	No rain	No
NM6	30/09/2014	11:47 PM	2.0			IA	IA	35	No rain	No

\* IA = Inaudible.

\*\*MCC ID = Locations as per the approved Noise Management Plan.

\*\*\*Evening / Night Leq & Night LA1 monitoring was conducted on the 29<sup>th</sup>, 30<sup>th</sup> September and 1<sup>st</sup> October 2014.

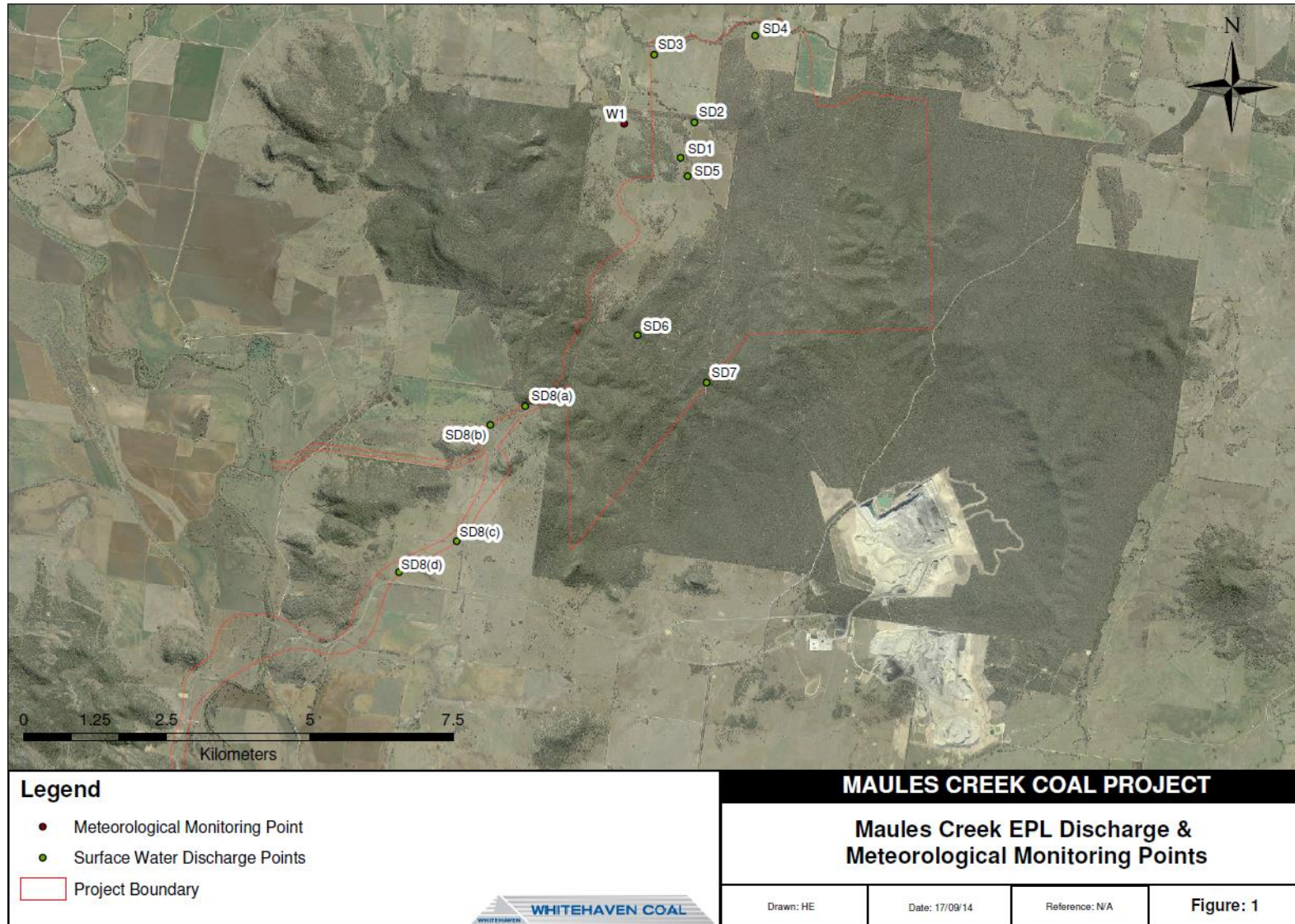
**Table 3 – Blast Monitoring (Blasts – Limits Apply)**

Location	Parameter	Units	Frequency	Number	Average	Max	100% Limit	Exceedance (Yes / No)
Construction Blasts*	Noise	Db (Lin Peak)	All	0			120	No
	Vibration	mm/s		0			10	No
Operations Blasts	Noise	Db (Lin Peak)	All	5	97.22	108.2	120	No
	Vibration	mm/s		5	0.34	0.81	10	No

\* The most recent construction related blast occurred in August 2014, there were no construction blasts in September.

# Figures

## Figure 1 – EPL 20221 Monitoring Locations





## MAULES CREEK COAL MINE – MONTHLY MONITORING SUMMARY

### Site Information

**EPL No:** 20221

**EPA Website Link:** [Hyperlink to Maules Creek Coal, Environment Protection Licence](#)

**Licensee:** Maules Creek Coal Mine Pty Ltd

**Licensee Address:** Maules Creek Coal Mine, Therribri Road, BOGGABRI NSW 2382

**EPL Monitoring Points:** Figure 1 Monitoring

**Sampling Period:** October 2014

**Publication Date:** 18 December 2014

Context: This Monthly Monitoring Summary aligns with the applicable Environment Protection Licence (EPL) – Maules Creek Coal Mine issued 5<sup>th</sup> February 2014 by the NSW Environment Protection Authority (EPA).

## Monthly Monitoring Summary

**Table 1 - Wet Weather Discharge - Surface Water Monitoring**

EPL ID	Parameter	Units	Frequency	Samples	Date	Laboratory Results Received	Min Value	Mean Value	Median Value	Max / Only Value
SD1	TSS	mg/L	Special Frequency Discharge only	0	No discharge event this month.					
	Conductivity	µs/cm		0						
	Oil & Grease	mg/L		0						
	pH	pH		0						
SD2	TSS	mg/L	Special Frequency Discharge only	0						
	Conductivity	µs/cm		0						
	Oil & Grease	mg/L		0						
	pH	pH		0						
SD3	TSS	mg/L	Special Frequency Discharge only	0						
	Conductivity	µs/cm		0						
	Oil & Grease	mg/L		0						
	pH	pH		0						
SD4	TSS	mg/L	Special Frequency Discharge only	0						
	Conductivity	µs/cm		0						
	Oil & Grease	mg/L		0						
	pH	pH		0						
SD5	TSS	mg/L	Special Frequency Discharge only	0						
	Conductivity	µs/cm		0						
	Oil & Grease	mg/L		0						
	pH	pH		0						
SD6	TSS	mg/L	Special Frequency Discharge only	0						
	Conductivity	µs/cm		0						
	Oil & Grease	mg/L		0						
	pH	pH		0						
SD7	TSS	mg/L	Special Frequency Discharge only	0						
	Conductivity	µs/cm		0						
	Oil & Grease	mg/L		0						
	pH	pH		0						
SD8 (a)	TSS	mg/L	Special Frequency Discharge only	0						
	Conductivity	µs/cm		0						
	Oil & Grease	mg/L		0						
	pH	pH		0						



EPL ID	Parameter	Units	Frequency	Samples	Date	Laboratory Results Received	Min Value	Mean Value	Median Value	Max / Only Value
SD8 (b)	TSS	mg/L	Special Frequency Discharge only	0	No discharge events this month.					
	Conductivity	µs/cm		0						
	Oil & Grease	mg/L		0						
	pH	pH		0						
SD8 (c)	TSS	mg/L	Special Frequency Discharge only	0						
	Conductivity	µs/cm		0						
	Oil & Grease	mg/L		0						
	pH	pH		0						
SD8 (d)	TSS	mg/L	Special Frequency Discharge only	0						
	Conductivity	µs/cm		0						
	Oil & Grease	mg/L		0						
	pH	pH		0						

**Table 2 – Noise Monitoring (Attended – Limits Apply)**

### Operations

MCC ID	Date	Start Time	Wind Speed (m/s)	Measured Levels – dB(A) <small>L<sub>Aeq 15min</sub> Day</small>	Measured Levels – dB(A) <small>L<sub>Aeq 15min</sub> Evening</small>	Measured Levels – dB(A) <small>L<sub>Aeq 15min</sub> Night</small>	Limit <small>L<sub>Aeq 15min</sub> (dB)</small> Operations Criteria	Measured Levels – dB(A) <small>L<sub>A1</sub> (1 min) Night</small>	Limit <small>L<sub>A1</sub> (1 min) (dB)</small> Operations Criteria	Weather	Exceedance (Yes / No)
NM1	23/10/2014	2:33 PM	3.9	IA			40			No rain	No
NM1	23/10/2014	8:42 PM	1.3		<25		35			No rain	No
NM1	23/10/2014	10:43 PM	1.9			<25	35	28	45	No rain	No
NM2	23/10/2014	2:04 PM	3.5	IA			40			No rain	No
NM2	23/10/2014	7:47 PM	0.4		<20		39			No rain	No
NM2	23/10/2014	11:41 PM	2.3			24	39	35	45	No rain	No
NM3	23/10/2014	1:01 PM	5.5	IA			40			No rain	No
NM3	23/10/2014	6:45 PM	0.8		IA		35			No rain	No
NM3	24/10/2014	12:40 AM	1.8			IA	35	IA	45	No rain	No
NM4	23/10/2014	1:37 PM	3.0	IA			40			No rain	No
NM4	23/10/2014	8:14 PM	1		<20		35			No rain	No
NM4	23/10/2014	11:12 PM	1.7			<20	35	<25	45	No rain	No
NM5	23/10/2014	2:58 PM	3.1	IA			40			No rain	No
NM5	23/10/2014	9:37 PM	1.8		IA		35			No rain	No
NM5	23/10/2014	10:17 PM	1.5			28	35	36	45	No rain	No
Cooboobindi	23/10/2014	12:20 PM	6.0	<35			45			No rain	No
NM6	23/10/2014	7:19 PM	0.6		IA		35			No rain	No
NM6	24/10/2014	12:10 AM	2.2			<20	35	<20	45	No rain	No

\* IA = Inaudible.

\*\*MCC ID = Locations as per the approved Noise Management Plan.

\*\*\*Evening / Night Leq & Night LA1 monitoring was conducted on the 23<sup>rd</sup>, 24<sup>th</sup> October 2014.  
*Italicised text indicates records where wind speed exceeds the 3.0m/s maximum for noise monitoring.*

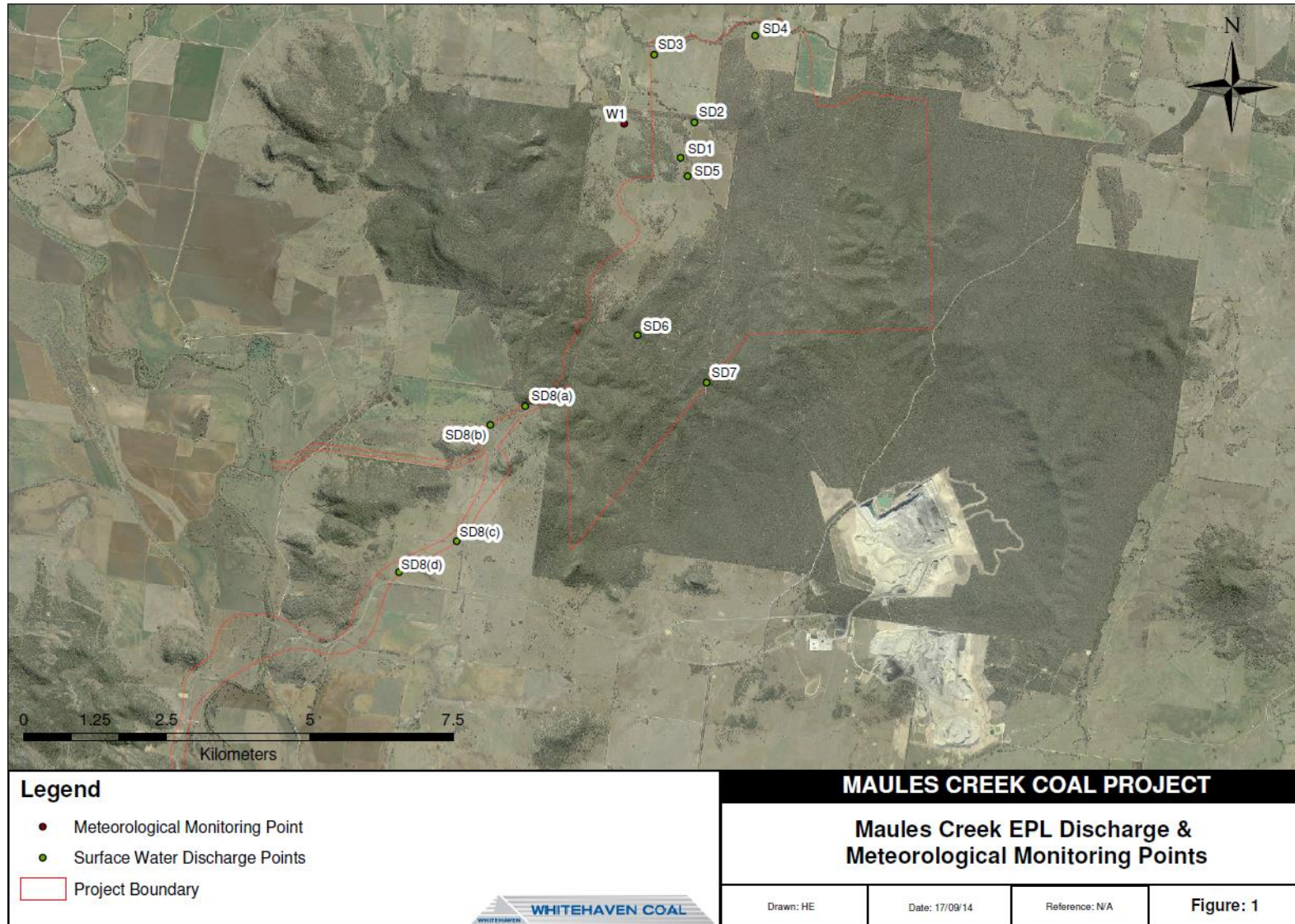
**Table 3 – Blast Monitoring (Blasts – Limits Apply)**

Location	Parameter	Units	Frequency	Number	Average	Max	100% Limit	Exceedance (Yes / No)
Operations Blasts	Noise	Db (Lin Peak)	All	7	98.35	106.1	120	No
	Vibration	mm/s		7	0.17	0.57	10	No

Construction related blasting concluded in August 2014.

# Figures

## Figure 1 – EPL 20221 Monitoring Locations





## MAULES CREEK COAL MINE – MONTHLY MONITORING SUMMARY

### Site Information

**EPL No:** 20221

**EPA Website Link:** [Hyperlink to Maules Creek Coal, Environment Protection Licence](#)

**Licensee:** Maules Creek Coal Mine Pty Ltd

**Licensee Address:** Maules Creek Coal Mine, Therribri Road, BOGGABRI NSW 2382

**EPL Monitoring Points:** Figure 1 Monitoring

**Sampling Period:** November 2014

**Publication Date:** 18 December 2014

Context: This Monthly Monitoring Summary aligns with the applicable Environment Protection Licence (EPL) – Maules Creek Coal Mine issued 5<sup>th</sup> February 2014 by the NSW Environment Protection Authority (EPA).

## Monthly Monitoring Summary

**Table 1 - Wet Weather Discharge - Surface Water Monitoring**

EPL ID	Parameter	Units	Frequency	Samples	Date	Laboratory Results Received	Min Value	Mean Value	Median Value	Max / Only Value
SD1	TSS	mg/L	Special Frequency Discharge only	0	No discharge event this month.					
	Conductivity	µs/cm		0						
	Oil & Grease	mg/L		0						
	pH	pH		0						
SD2	TSS	mg/L	Special Frequency Discharge only	0						
	Conductivity	µs/cm		0						
	Oil & Grease	mg/L		0						
	pH	pH		0						
SD3	TSS	mg/L	Special Frequency Discharge only	0						
	Conductivity	µs/cm		0						
	Oil & Grease	mg/L		0						
	pH	pH		0						
SD4	TSS	mg/L	Special Frequency Discharge only	0						
	Conductivity	µs/cm		0						
	Oil & Grease	mg/L		0						
	pH	pH		0						
SD5	TSS	mg/L	Special Frequency Discharge only	0						
	Conductivity	µs/cm		0						
	Oil & Grease	mg/L		0						
	pH	pH		0						
SD6	TSS	mg/L	Special Frequency Discharge only	0						
	Conductivity	µs/cm		0						
	Oil & Grease	mg/L		0						
	pH	pH		0						
SD7	TSS	mg/L	Special Frequency Discharge only	0						
	Conductivity	µs/cm		0						
	Oil & Grease	mg/L		0						
	pH	pH		0						
SD8 (a)	TSS	mg/L	Special Frequency Discharge only	0						
	Conductivity	µs/cm		0						
	Oil & Grease	mg/L		0						
	pH	pH		0						



EPL ID	Parameter	Units	Frequency	Samples	Date	Laboratory Results Received	Min Value	Mean Value	Median Value	Max / Only Value
SD8 (b)	TSS	mg/L	Special Frequency Discharge only	0	No discharge events this month.					
	Conductivity	µs/cm		0						
	Oil & Grease	mg/L		0						
	pH	pH		0						
SD8 (c)	TSS	mg/L	Special Frequency Discharge only	0						
	Conductivity	µs/cm		0						
	Oil & Grease	mg/L		0						
	pH	pH		0						
SD8 (d)	TSS	mg/L	Special Frequency Discharge only	0						
	Conductivity	µs/cm		0						
	Oil & Grease	mg/L		0						
	pH	pH		0						

**Table 2 – Noise Monitoring (Attended – Limits Apply)**

### Operations

MCC ID	Date	Start Time	Wind Speed (m/s)	Measured Levels – dB(A) L <sub>Aeq 15min</sub> Day	Measured Levels – dB(A) L <sub>Aeq 15min</sub> Evening	Measured Levels – dB(A) L <sub>Aeq 15min</sub> Night	Limit L <sub>Aeq 15min</sub> (dB) Operations Criteria	Measured Levels – dB(A) L <sub>A1</sub> (1 min) Night	Limit L <sub>A1</sub> (1 min) (dB) Operations Criteria	Weather	Exceedance (Yes / No)
NM1	26/11/2014	13:46	3.7	IA			40			No rain	No
NM1	25/11/2014	21:16	1.8		20		35			No rain	No
NM1	25/11/2014	22:26	2.4			<20	35	24	45	No rain	No
NM2	26/11/2014	12:29	3.0	IA			40			No rain	No
NM2	25/11/2014	20:21	2.2		27		39			No rain	No
NM2	25/11/2014	23:56	1.1			26	39	33	45	No rain	No
NM3	26/11/2014	11:41	2.1	IA			40			No rain	No
NM3	25/11/2014	19:22	0.8		IA		35			No rain	No
NM3	25/11/2014	23:22	0.4			<20	35	24	45	No rain	No
NM4	26/11/2014	13:15	3.9	IA			40			No rain	No
NM4	25/11/2014	20:49	1.7		22		35			No rain	No
NM4	26/11/2014	00:23	0.5			21	35	28	45	No rain	No
NM5	26/11/2014	14:10	4.1	IA			40			No rain	No
NM5	25/11/2014	21:41	2.1		NM		35			No rain	No
NM5	25/11/2014	22:01	1.8			<20	35	20	45	No rain	No
Cooboobindi	26/11/2014	11:16	1.8	30			45			No rain	No
NM6	25/11/2014	19:54	3.0		IA		35			No rain	No
NM6	25/11/2014	22:54	2.0			IA	35	IA	45	No rain	No

\* IA & NM = Inaudible & Not Measurable.

\*\*MCC ID = Locations as per the approved Noise Management Plan.

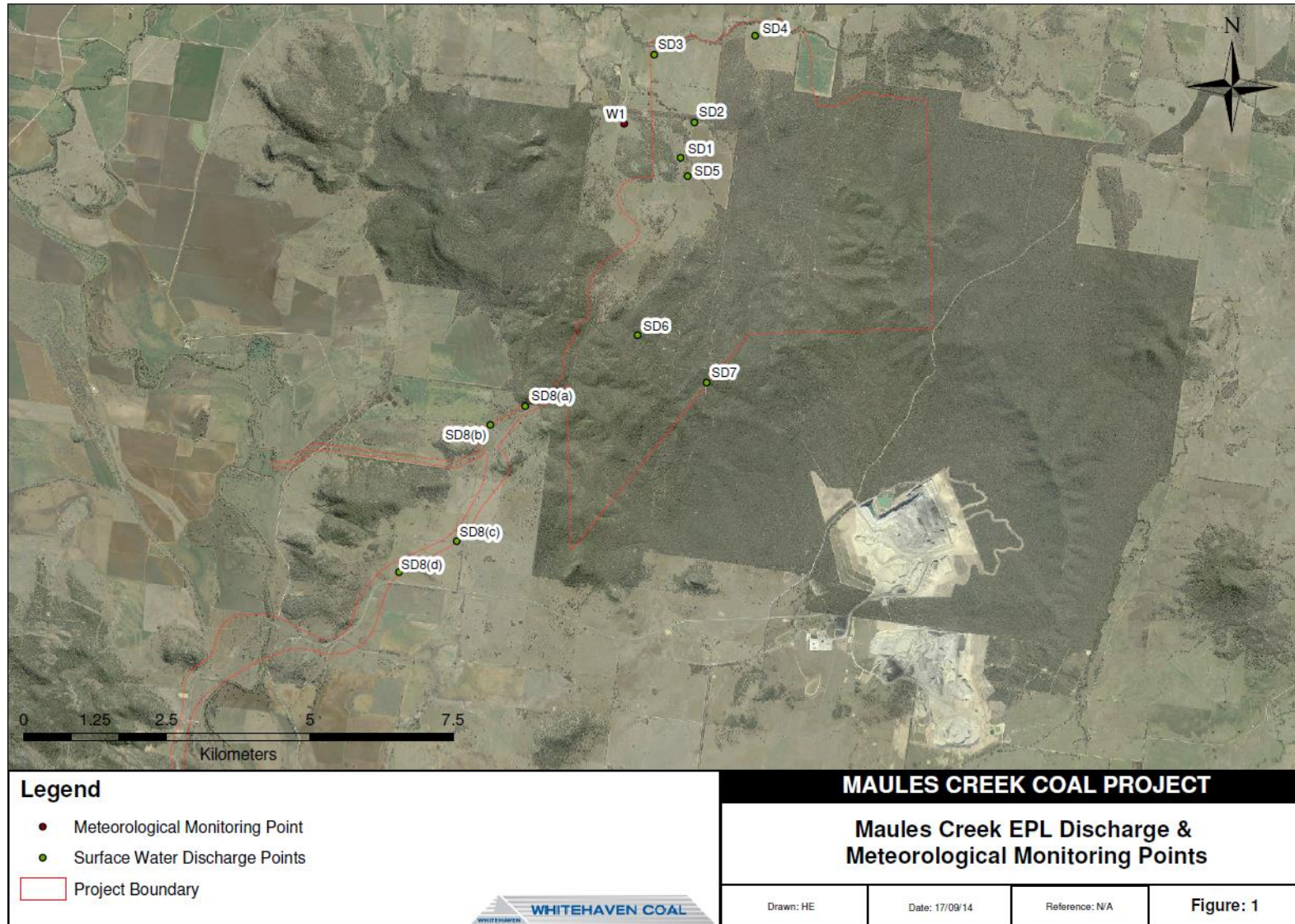
\*\*\*Evening / Night Leq & Night LA1 monitoring was conducted on the 25<sup>th</sup> & 26<sup>th</sup> November 2014.  
*Italicised text indicates records where wind speed exceeds the 3.0m/s maximum for noise monitoring.*

**Table 3 – Blast Monitoring (Blasts – Limits Apply)**

<b>Location</b>	<b>Parameter</b>	<b>Units</b>	<b>Frequency</b>	<b>Number</b>	<b>Average</b>	<b>Max</b>	<b>100% Limit</b>	<b>Exceedance (Yes / No)</b>
Operations	Noise	Db (Lin Peak)	All	6	96.93	113.50	120	No
Blasts	Vibration	mm/s		6	0.25	0.77	10	No

# Figures

Figure 1 – EPL 20221 Monitoring Locations





## MAULES CREEK COAL MINE – MONTHLY MONITORING SUMMARY

### Site Information

**EPL No:** 20221

**EPA Website Link:** [Hyperlink to Maules Creek Coal, Environment Protection Licence](#)

**Licensee:** Maules Creek Coal Mine Pty Ltd

**Licensee Address:** Maules Creek Coal Mine, Therribri Road, BOGGABRI NSW 2382

**EPL Monitoring Points:** Figure 1 Monitoring

**Sampling Period:** December 2014

**Publication Date:** 4 February 2015

Context: This Monthly Monitoring Summary aligns with the applicable Environment Protection Licence (EPL) – Maules Creek Coal Mine issued 5<sup>th</sup> February 2014 by the NSW Environment Protection Authority (EPA).

## Monthly Monitoring Summary

**Table 1 - Wet Weather Discharge - Surface Water Monitoring**

EPL ID	Parameter	Units	Frequency	Samples	Date	Laboratory Results Received	Min Value	Mean Value	Median Value	Max / Only Value
SD1	TSS	mg/L	Special Frequency Discharge only	0	No discharge event this month.					
	Conductivity	µs/cm		0						
	Oil & Grease	mg/L		0						
	pH	pH		0						
SD2	TSS	mg/L	Special Frequency Discharge only	0						
	Conductivity	µs/cm		0						
	Oil & Grease	mg/L		0						
	pH	pH		0						
SD3	TSS	mg/L	Special Frequency Discharge only	0						
	Conductivity	µs/cm		0						
	Oil & Grease	mg/L		0						
	pH	pH		0						
SD4	TSS	mg/L	Special Frequency Discharge only	0						
	Conductivity	µs/cm		0						
	Oil & Grease	mg/L		0						
	pH	pH		0						
SD5	TSS	mg/L	Special Frequency Discharge only	0						
	Conductivity	µs/cm		0						
	Oil & Grease	mg/L		0						
	pH	pH		0						
SD6	TSS	mg/L	Special Frequency Discharge only	0						
	Conductivity	µs/cm		0						
	Oil & Grease	mg/L		0						
	pH	pH		0						
SD7	TSS	mg/L	Special Frequency Discharge only	0						
	Conductivity	µs/cm		0						
	Oil & Grease	mg/L		0						
	pH	pH		0						
SD8 (a)	TSS	mg/L	Special Frequency Discharge only	0						
	Conductivity	µs/cm		0						
	Oil & Grease	mg/L		0						
	pH	pH		0						



EPL ID	Parameter	Units	Frequency	Samples	Date	Laboratory Results Received	Min Value	Mean Value	Median Value	Max / Only Value
SD8 (b)	TSS	mg/L	Special Frequency Discharge only	0	No discharge events this month.					
	Conductivity	µs/cm		0						
	Oil & Grease	mg/L		0						
	pH	pH		0						
SD8 (c)	TSS	mg/L	Special Frequency Discharge only	0						
	Conductivity	µs/cm		0						
	Oil & Grease	mg/L		0						
	pH	pH		0						
SD8 (d)	TSS	mg/L	Special Frequency Discharge only	0						
	Conductivity	µs/cm		0						
	Oil & Grease	mg/L		0						
	pH	pH		0						

**Table 2 – Noise Monitoring (Attended – Limits Apply)**

### Operations

MCC ID	Date	Start Time	Wind Speed (m/s)	Measured Levels – dB(A) L <sub>Aeq 15min</sub> Day	Measured Levels – dB(A) L <sub>Aeq 15min</sub> Evening	Measured Levels – dB(A) L <sub>Aeq 15min</sub> Night	Limit L <sub>Aeq 15min</sub> (dB) Operations Criteria	Measured Levels – dB(A) L <sub>A1</sub> (1 min) Night	Limit L <sub>A1</sub> (1 min) (dB) Operations Criteria	Weather	Exceedance (Yes / No)
NM1	10/12/2014	1719	2.7	IA			35			No rain	No
NM1	10/12/2014	ND	-				35			No rain	No
NM1	10/12/2014	2304	1.9			IA	35	IA	45	No rain	No
NM2	11/12/2014	0953	8.1	IA			35			No rain	No
NM2	10/12/2014	2034	0.6		IA		39			No rain	No
NM2	11/12/2014	0001	2.5			<25	39	33	45	No rain	No
NM3	10/12/2014	1755	2.0	IA			35			No rain	No
NM3	10/12/2014	1815	3.3		IA		35			No rain	No
NM3	11/12/2014	0121	2.7			26	35	29	45	No rain	No
NM4	11/12/2014	1020	7.0	IA			35			No rain	No
NM4	10/12/2014	2058	4.1		IA		35			No rain	No
NM4	10/12/2014	2333	1.4			22	35	31	45	No rain	No
NM5	10/12/2014	1654	4.0	IA			35			No rain	No
NM5	10/12/2014	ND	-				35			No rain	No
NM5	10/12/2014	2240	3.0			<20	35	23	45	No rain	No
Cooboobindi	11/12/2014	0912	4.2	<40			45			No rain	No
NM6	10/12/2014	1843	2.0		IA		35			No rain	No
NM6	11/12/2014	0053	3.8			IA	35	IA	45	No rain	No

\* IA & NM = Inaudible & Not Measurable.

\*\*MCC ID = Locations as per the approved Noise Management Plan.

\*\*\*Evening / Night Leq & Night LA1 monitoring was conducted on the 10<sup>th</sup> & 11<sup>th</sup> December 2014.

\*\*\*ND = No data due to high prevailing winds during the attended noise monitoring event.

*Italicised text indicates wind speed exceeds the 3.0m/s maximum for noise monitoring.*

**Table 3 – Blast Monitoring (Blasts – Limits Apply)**

<b>Location</b>	<b>Parameter</b>	<b>Units</b>	<b>Frequency</b>	<b>Number</b>	<b>Average</b>	<b>Max</b>	<b>100% Limit</b>	<b>Exceedance (Yes / No)</b>
Operations Blasts	Noise	Db (Lin Peak)	All	5	98.74	106.20	120	No
	Vibration	mm/s		5	0.33	0.66	10	No

# Figures

## Figure 1 – EPL 20221 Monitoring Locations

