

Notes: Notes of the 37th Meeting of the Maules Creek Coal Community Consultative Committee
Held at the Boggabri Golf Club

Wednesday 25 May 2022

Members Present: Brett Dickinson (BD) – Narrabri Shire Council, Darren Swain (DS) – WHC, Elizabeth O’Hara (EOH) – Community Representative, Emma Bulkeley (EB) – WHC, Jack Warnock (JW) – Community Representative, Michelle Henry (MH) – Narrabri Shire Council, Robyn Grover (RG) – Community Representative, Steve Eather (SE) – Community Representative, Talan Breden (TB) – WHC

Apologies: Libby Laird (LL) – Maules Creek Community Representative, Lyndell Crowley (LC) – Community Representative, Ros Druce (RD) – Community Representative (Alternate), Simone Moodie (SMo) – Community Aboriginal Representative

Independent Chair: David Ross (DR)

Independent Secretary: Debbie Corlet (DC)

Agenda Items	Who to Present
1. Apologies	DR
2. Declaration of pecuniary or other interests	DR
3. Confirmation of the Minutes of the previous meeting – Wednesday 25 May 2022	DR
4. Business arising from the previous minutes – Action List Distributed	DR
5. Company Report and Overview of Mine	WHC
6. General Business	DR
7. Next Meeting – Wednesday 24 August 2022	ALL

Agenda Item	Discussion	Action/By Whom
1.	Welcome and Apologies – DR welcomed everyone, particularly new members, to the meeting.	
2.	Declaration of pecuniary or other interests – DR is paid a fee as chair as is DC for typing the minutes. EOH has a small bundle of WHC shares. RG has a daughter at Maules Creek.	
3.	Confirmation of the Minutes of the previous meeting – The CCC endorsed the minutes from the previous meeting.	
4.	Business Arising from the previous minutes DR – Members have received responses to actions from the previous meeting.	
5.	<p>Company Reports and Overview of Activities</p> <p>Site Overview: Health and Safety TB discussed MCCM’s efforts to increase health and safety through increased field leadership activities. These included: increased hazard reporting; maturing health and safety critical control programs; building capabilities for Health and Safety Team; improvement in injury management (e.g., increased coverage through roster changes / earlier interaction / increased field leadership and mentoring of supervisors).</p> <p>Site Overview: COVID-19 TB described MCCM’s efforts to manage the risk of COVID. These include: early detection through Rapid Antigen Screening Program; and WHC Sponsored Clinic that attended the site in April / May 2022, delivering COVID-19 Booster Vaccine and Influenza Vaccines. COVID-19 related absenteeism continues to decline. Period from 1 January – 24 May 2022: 18,037 RATs conducted with 274 positive RAT confirmed cases.</p> <p>Environmental Monitoring – Air Quality Monitoring – All data in the Monitoring Report supplied.</p> <p><u>Depositional Dust</u> – The annual reporting period (12 monthly rolling annual average) remained below the relevant Project Approval (PA 10_0138) criteria 4g/m²/month for the respective monitoring points.</p> <p><u>HVAS</u> – The HVAS monitor is located on ‘Olivedene’. No exceedances recorded during the 24-hour average of 50 µg/m³. Rolling Annual Average was recorded at 9.4 µg/m³ which is below the Annual Average Guideline of 30µg/m³.</p> <p><u>TEOM (PM10)</u> –Annual rolling average for TEOM1 is 5.9 µg/m³ at 31 March 2022 (criteria 30µg/m³).</p>	

<p><u>Mitigation measures</u> – Ongoing dust suppressant application across the operation, i.e., water carts, stockpile sprays and progressive overburden emplacement and bulk shaping on the northern dump.</p> <p>Environmental Monitoring – Groundwater. Emma went through the slides. JW – Currawidgen is only available up to January this year and no data from January to May. EB – We have the data. Will ask the team and find out.</p> <p>Biodiversity Management <u>Feral Animal Management</u> – Most recent routine WHC Biodiversity Feral Animal Control program (March 2022) was constrained due to flooding, the results included: 122 out of total 185 pigs trapped were from the Maules Offset properties. 426 out of total 1470 baits (1080) taken were from the Maules Offsets properties. DR – Asked for a property map to be included in the next presentation to assist new members. <u>Weed Control</u> – Spraying of Summer growing invasive grasses completed. Targeted seasonal weed control for Sweet Briar and Box Thorn completed. Maintenance of fire break tracks to control excessive vegetation growth ongoing given good seasonal conditions. <u>Fencing & Waste Maintenance</u> – Final removal of waste stockpiles from Wirradale, Bimbooria and Velyama completed derelict infrastructure removal program. Additional fencing constructed for Mt Lindesay and Bimbooria as well as new Heritage Site had demarcation fencing installed. <u>Threatened Flora</u> – Quarterly inspections of threatened species is ongoing, including surveillance of flowering <i>Tylophora</i> plants. Good survival of Pomaderris plantings from last year with some plants flowering. <u>Upcoming Works</u></p> <ul style="list-style-type: none"> • Quarterly Pest Animal Monitoring and Control Program in June 2022. • Continued seasonal Weed Control Programs. Annual Reveg Planning and Assessment Inspections. • Quarterly Threatened Flora Inspections and Programs. Execute for Annual Ecological Burn Program. • Continue Heritage & Ecology Due Diligence Assessments. Continued Fencing / Maintenance works. <p>SE – There are a lot of fencing issues at the moment due to all the flooding. EB – They use a different contractor for the offsets. DW to get Brent to give Steve a call about this.</p> <p>Community – 2 complaints. 11/01/22 for a blast and 22/02/22 for a bus.</p> <p>Community Donations – For January to March 2022 almost \$198,900. Highlights included over \$50,904 to Westpac Rescue Helicopter (matching employee donations), and \$10,000 to Country Education Foundation Namoi.</p>	<p>ACTION 1 – EB to get data for Currawidgen and provide to JW and CCC</p> <p>ACTION 2 – EB to include property map</p> <p>ACTION 3 – DS to call SE re fencing</p>
--	--

	<p>BD – Do you get many requests? DS – This round just completed which was 1 April to 30 April we had about 25 applications. More advertising and word of mouth has helped increase this.</p> <p>AHS Project Works After the AHS system experienced delays through March and April by unforeseen controls that would not allow viable production, MCCM are now moving towards recommencement at the end of May and potential expansion by the end of 2022. Hitachi have released new enhancements that have provided genuine production benefits such as refining the topside loading process, enhanced Autonomous Haul Truck (AHT) Lidar detection logic at dumps, and reducing the AHT recovery.</p> <p>BD – Do they work with the driven vehicles. TB – No, they run very separately. SE – Do they do more damage to the road? EB – They need to do more roadworks but can do offsets. TB – The AHS tells you about the road, so it can be planned more efficiently. Always continuous improvement in this space.</p> <p>Approvals Update</p> <p><u>Blast Management Plan</u> – EB updated members, observing that the review comprises the following:</p> <ul style="list-style-type: none"> • Align BLMP and the BTM Strategy in relation to scheduling and delays between blasting activities across the BTM. • Update of the consultation process between the BTM mines and the community. • Formalise use of portable fume monitors when wind direction is between 90⁰ and 270⁰. <p>Members were invited to provide comments by the end of June 2022.</p> <p><u>Modification 9 – BOS and ETL</u> – EB provided an update on the Modification. No changes to the coal mining and processing rate, mining method, mine life or rail movements are proposed as part of the Modification. It is anticipated that the Modification application and Modification Report will be lodged in Q2 CY22 and subsequently placed on public exhibition for comment.</p>	<p>ACTION 4 – CCC to provide feedback on Blast Management Plan by end of June 2022</p> <p>ACTION 5 – EB to send DR link to Modification 9 when it is approved</p>
--	--	---

	<p>Maules Creek CCC Briefing – Water – Enforceable Undertaking update</p> <ul style="list-style-type: none"> • Water Management Plan to be resubmitted following consultation with regulators in May. • Construction of the 4 highwall dams has been completed. Installation of stream monitoring equipment in June. Clean water system is operational; however, adequate water capture for commissioning has not occurred. 	
6.	<p>General Business</p> <p>JW – Do you have any feedback on the fine that was imposed on the creek. How did it happen and when did it occur? EB – Heavy rainfall from January 2020 with the 1 in 100-year storm events, so we received massive rainfall and saw slumping which blocked the drain and water overflowed over the drain and into the creek.</p> <p>EOH – In 2018, there were 229 tyres buried. Can a slide on tyres buried be included in these presentations please? DS – It is included in our Annual Report which will hold all that information.</p> <p>EOH – Can you provide information on the clearing of land that took place? EB – It occurred between 15 February and 30 April. It wasn't a large area, and it was on the eastern side. This is consistent with our approval.</p> <p>EOH – How many passengers are using the mine bus? DS – There was an approval for 90% but now it is 70%. That's operational staff under the Award. EB – It is available on the Annual Review which is on the WHC website.</p> <p>There was a discussion about the polystyrene beads-related fine. TB read out a briefing that was sent out to WHC staff but is for internal communications. TB and EB will get company approval from the Communications Department and send through a summary to be included in the Minutes. It was observed that the beads were tiny, and blower (sucker) vacuums were used as were men on foot cleaned it up. BD – Why is it in the blast material? EB – They help with the density of the product, so you don't need to use as much product in the hole and with the explosion. They were a product from a previous blast contractor. They use a different product completely now. EOH observed that Roz Druce should be commended for bringing up the issue in the first place.</p> <p>DR – Noted that the Namoi Regional Air Quality Advisory Committee has gone through its 2-year term. Due to a lack of interest, the EPA have decided to use targeted information meetings across the region in the latter half of the year.</p> <p>DR explained to MH and BD that members have been interested in where the VPA money is being used. MH – Mentioned the allocation of community projects. \$800,000 from Maules Creek on community projects around Boggabri which is done via an application process through Council. There were 4 projects approved like the</p>	<p>ACTION 6 – WHC to send link for the Annual Report for DR to circulate to CCC members</p> <p>ACTION 7 – WHC to provide a summary of the polystyrene beads</p>

	<p>showground for approx. \$300,000. Local public school for \$22,00. Tractor shed for \$60,000 and \$120,000 was allocated to the CBD and business activation. There is still potential for more community projects. Go to Council website to apply.</p> <p>BD – There are certain rules of where the money goes. It is discussed at Council meetings.</p> <p>DS – There are certain projects that this was allocated to. \$13 million has been paid over 4- or 5-year period. It was paid about 2 or 3 years ago. Ongoing monthly payment. The mine pays a percentage (few cents per tonne).</p>	ACTION 8 – MH to supply link for community projects and how people can apply
7.	Next meeting date– Next meeting will be a site visit on Wednesday 24 August 2022 at 2:00 pm.	

Meeting Closed: 3:20 pm

Appendix 1: Actions

Page No	Action No	Description	Date Raised
3	1	EM to get data for Currawidgen and provide to JW and CCC	25 May 2022
3	2	WHC to include property map	25 May 2022
3	3	DS to call SE re fencing	25 May 2022
4	4	CCC to provide feedback on Blast Management Plan by end of June 2022	25 May 2022
4	5	EB to send DR link to Modification 9 when it is approved	3 November 2021
5	6	WHC to send link for the Annual Report for DR to circulate to CCC members	25 May 2022
5	7	WHC to provide a summary of the polystyrene beads	25 May 2022
6	8	MH to supply link for community projects and how people can apply	25 May 2022

Maules Creek Coal Mine

CCC MEETING

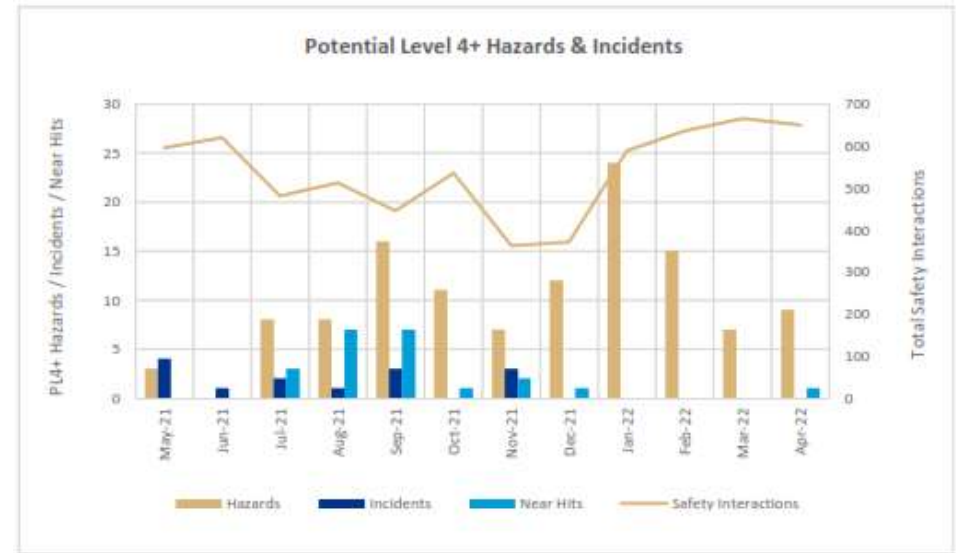
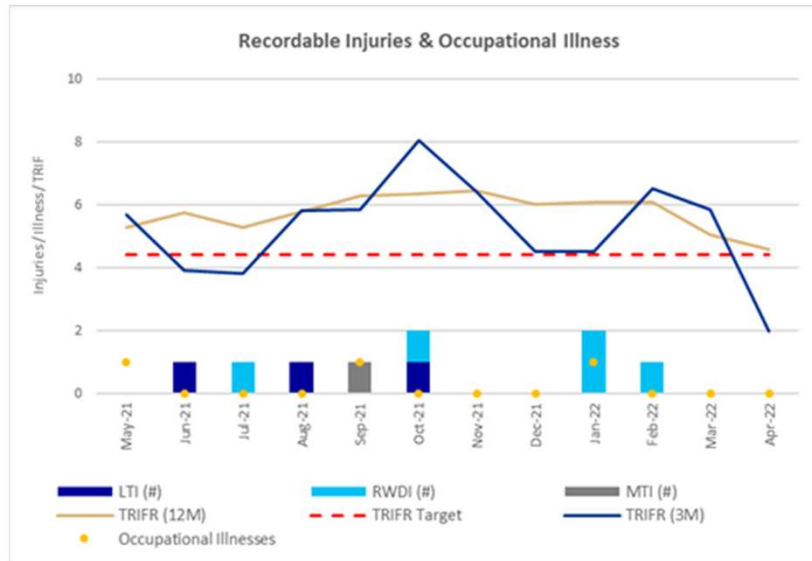
MAULES CREEK COAL MINE

FEBRUARY 2022



WHITEHAVEN COAL

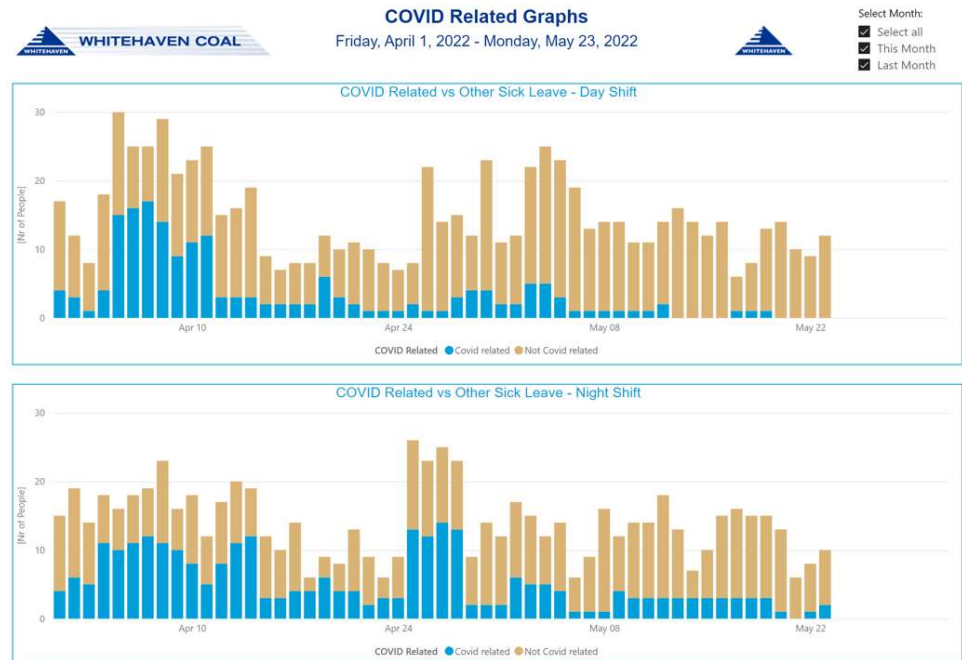
Site Overview: Health and Safety



- Increasing Lead indicators through increased field leadership activities
 - PTO's focusing on key risks road and working area conditions / positive communications
 - Increased Hazard reporting (PL4 Hazards ~130% of target)
 - Environmental critical control program and detailed schedule established
 - Maturing Health and Safety critical control programs (CY22 completion)
- Team development and building capabilities (Health and Safety team)
- Improvement in injury management (increased coverage through roster changes / earlier interaction / increased field leadership and mentoring of supervisors)
- ICAM training for front line leaders

Site Overview: COVID-19

- Focus remains on early detection through our Rapid Antigen Screening Program to protect our people, our operation and the community.
- Controls are in line with NSW Government requirements.
- WHC Sponsored Clinic attended site April/May 2022 delivering COVID-19 Booster Vaccine and Influenza Vaccines.
- COVID-19 Related absenteeism continues to decline (see right).
- Period from 01 January – 24 May 2022.
 - 18,037 RAT's conducted
 - 274 Positive RAT confirmed cases



Environmental Monitoring

All data is summarised in detail in the Monitoring Report Supplied.



WHITEHAVEN COAL

Environmental Monitoring

Air Quality Monitoring



WHITEHAVEN COAL

Depositional Dust

- The annual reporting period (12 monthly rolling annual average) remained below the relevant Project Approval (PA 10_0138) criteria of 4g/m²/month for the respective monitoring points.

MONTH	MC1	MC2	MC3	MC4
January	10.3c	0.6	2.6	3.6
February	22c	0.7	1.5	0.7
March	7.2c	0.6	2.3	0.3
12 MONTH ROLLING AVERAGE	1.5	1.6	1.5	1.2

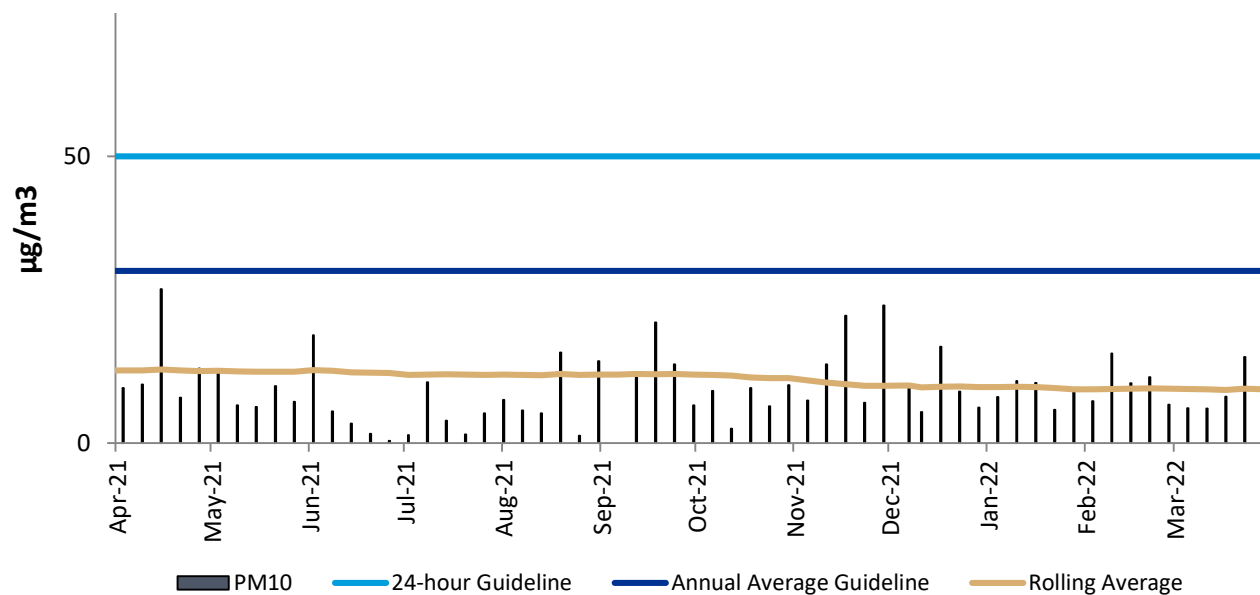
^c samples contaminated by bird dropping, decomposed insects or vegetable matter.

HVAS

- The HVAS monitor is located on 'Olivedene'
- Data is publically available
- No exceedances recorded during the 24 hour average of $50 \mu\text{g}/\text{m}^3$
- The Rolling Annual Average was recorded at **$9.4 \mu\text{g}/\text{m}^3$** , which is below the Annual Average Guideline of $30 \mu\text{g}/\text{m}^3$.

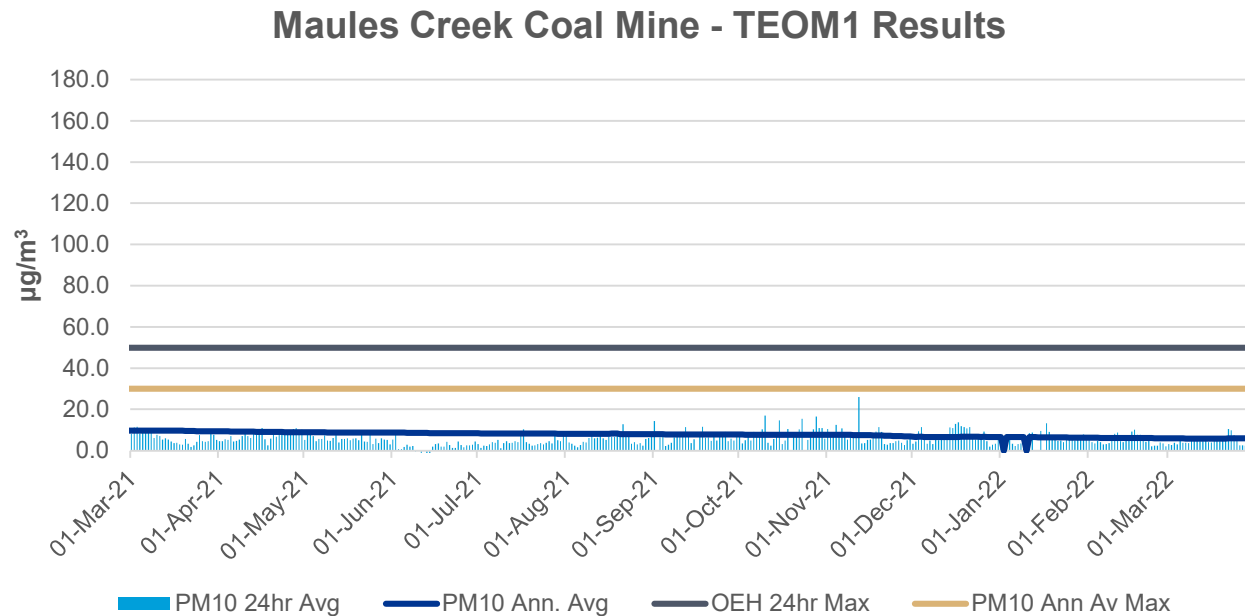
HVAS

HVAS (PM10) - Olivedene



TEOM (PM10)

- Publically available results of TEOM1 available on the EPA website. Annual rolling average for TEOM 1 is 5.9 $\mu\text{g}/\text{m}^3$ at 31 March 2022 (criteria 30 $\mu\text{g}/\text{m}^3$).



Air Quality Monitoring Rolling 12 Months

Regional Air Quality PM10 Comparison

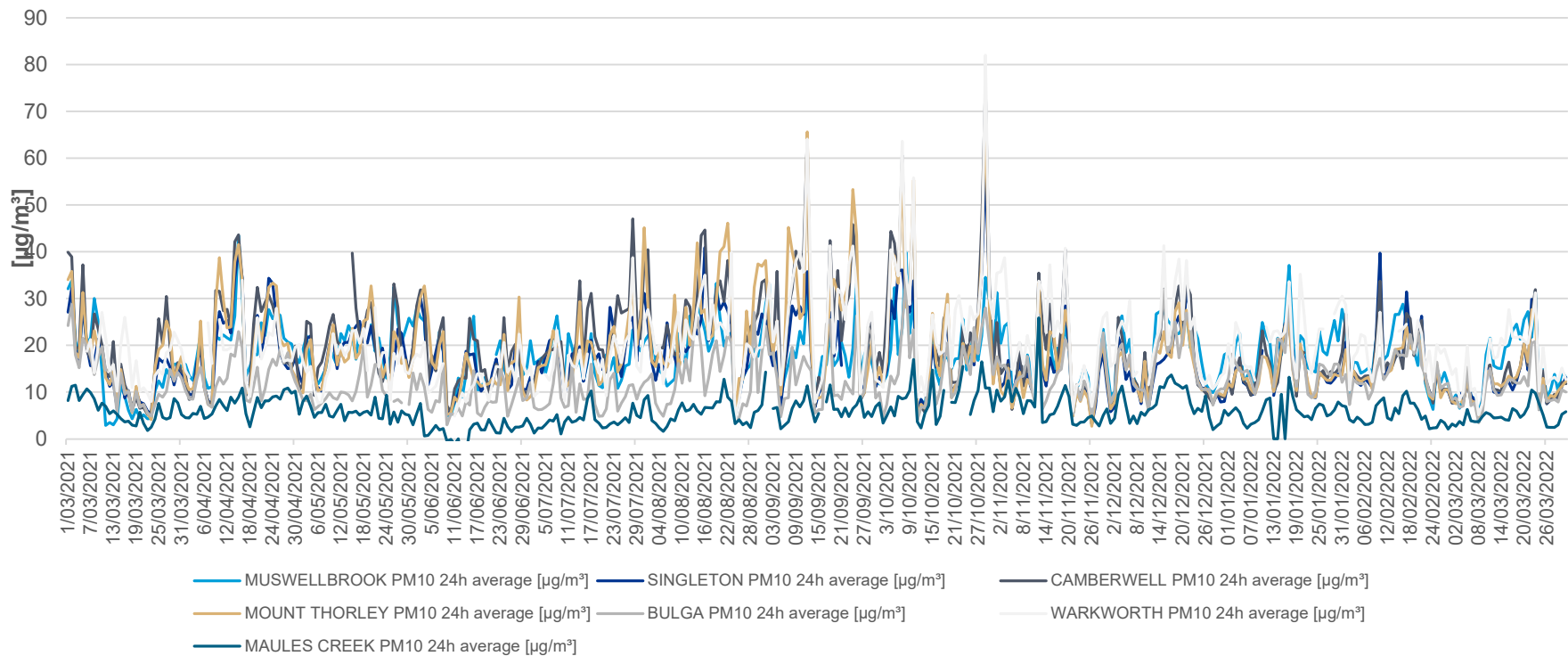


Table – Annual reporting data from 1st March 2021 to 31st March 2022.

01/01/2021 – 31/12/2021	TAMWORTH PM10	MUSWELLBROOK PM10	SINGLETON PM10	CAMBERWELL PM10	MOUNT THORLEY PM10	BULGA PM10	WARKWORTH PM10	MAULES CREEK PM10
Annual Average	12	18	17	20	18	13	20	6
Max 24hr Ave	36	44	58	76	71	35	82	26

Mitigation measures

- Ongoing dust suppressant application across the operation.
- i.e. water carts, stockpile sprays and progressive overburden emplacement and bulk shaping on the northern dump, with top soil spreading and tree planting in progress.

Environmental Monitoring

Groundwater

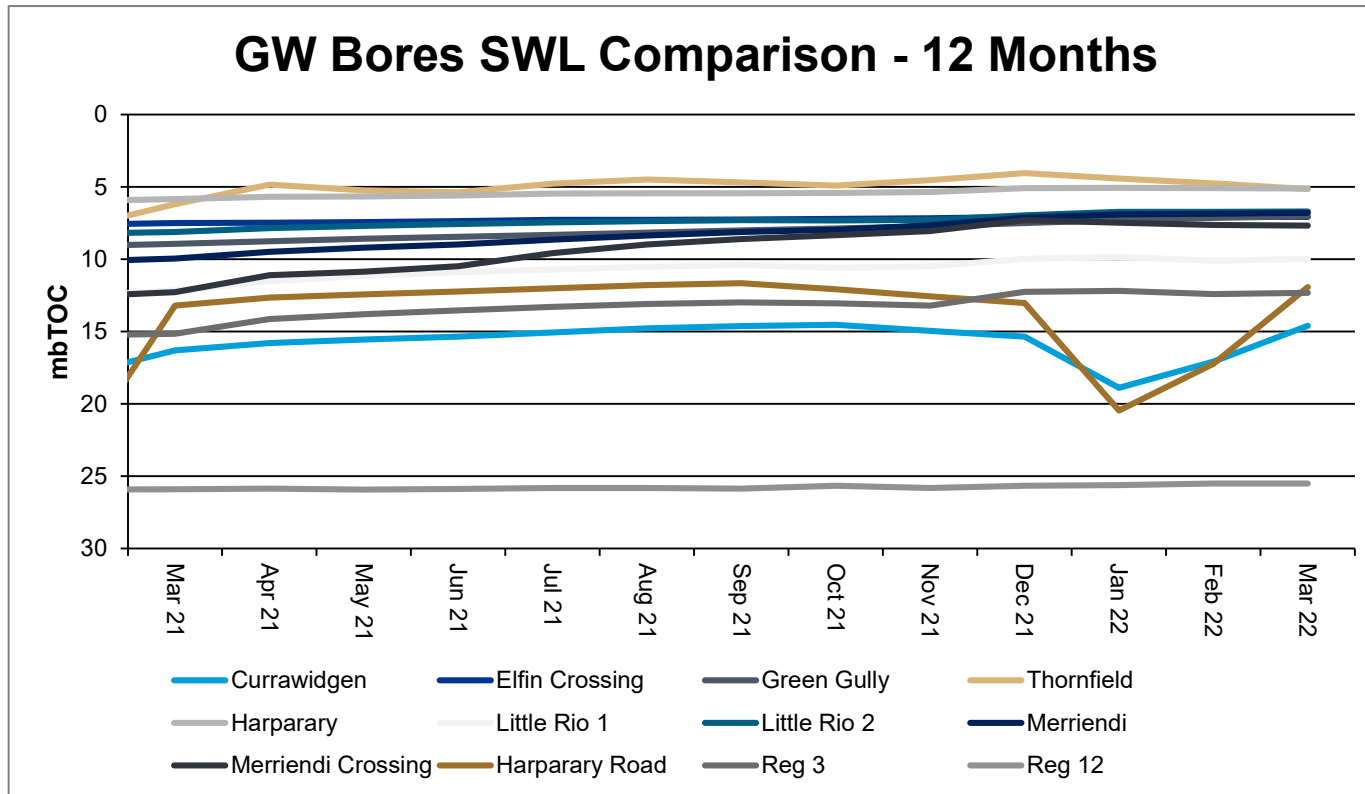


WHITEHAVEN COAL

Monitoring Locations



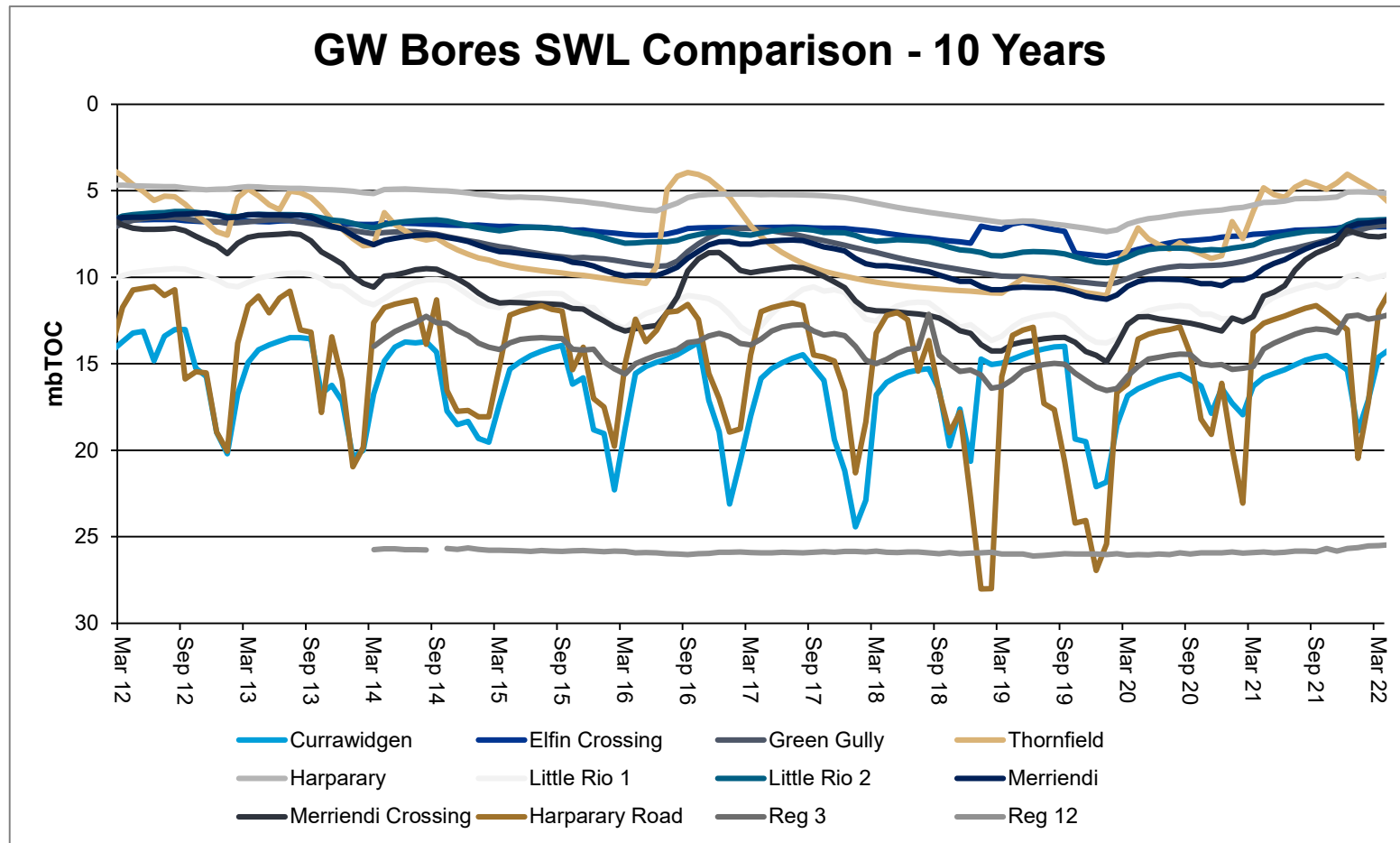
Groundwater levels



* Note Reg12 and Reg3 both within Boggabri Volcanics

Source: NSW DPI- Water & MCCM monitoring data

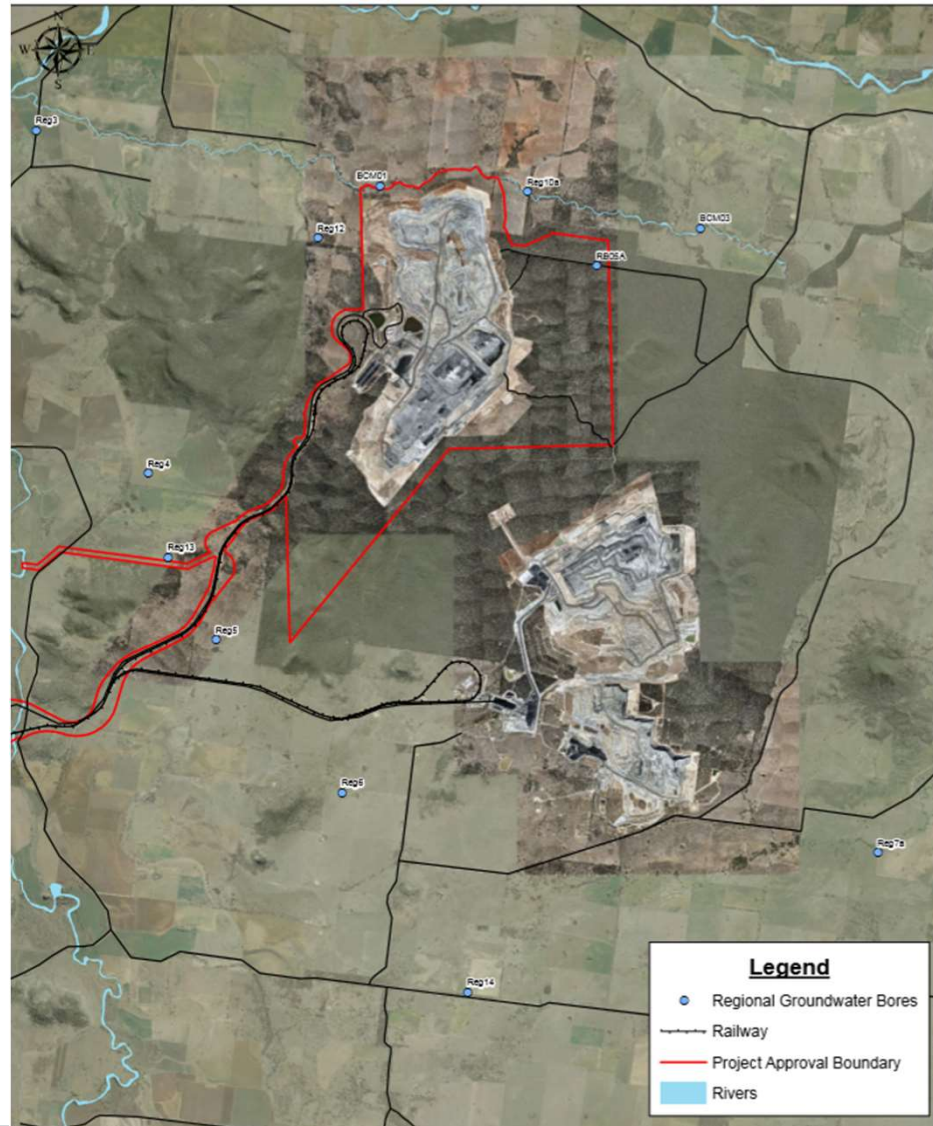
Groundwater levels



* Note Reg12 and Reg3 both within Boggabri Volcanics

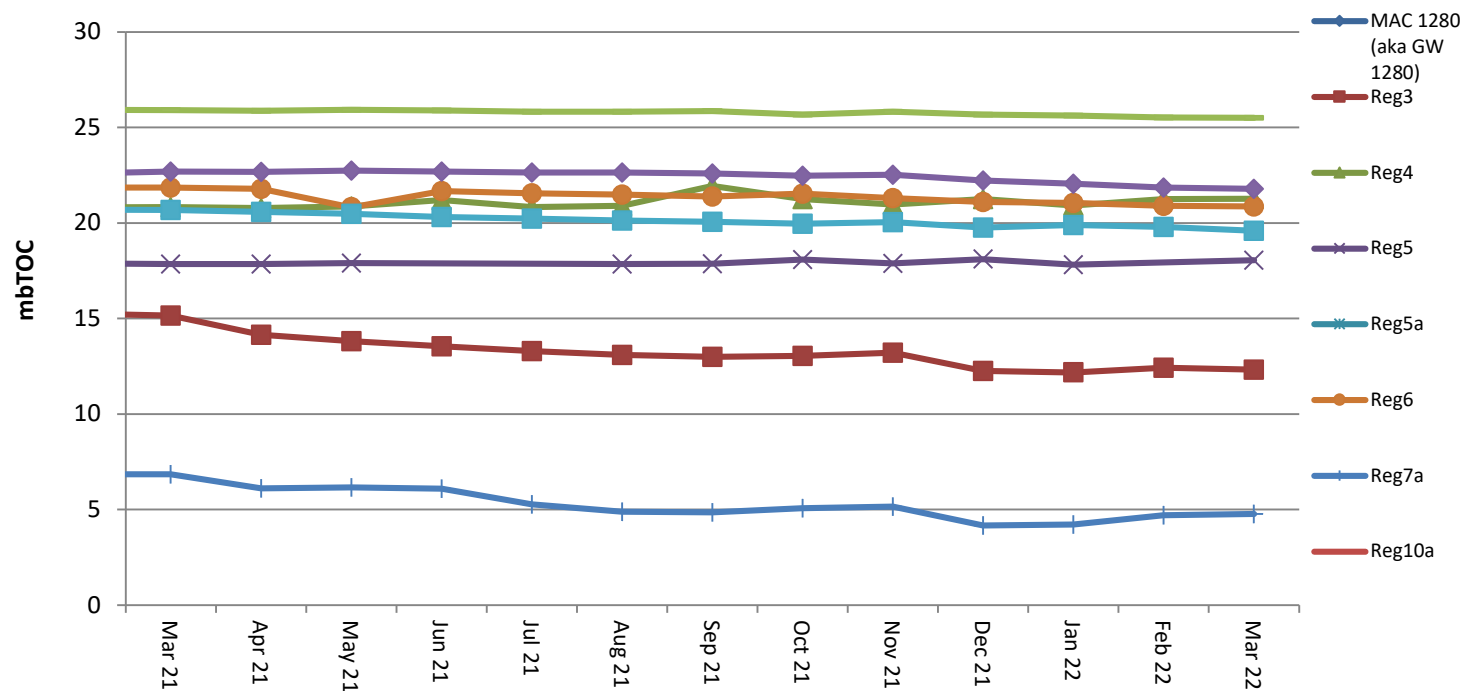
Source: NSW DPI- Water & MCCM monitoring data

Standing water levels



Standing water levels

Regional GW - Standing Water Level 2021



Environmental Monitoring

Biodiversity



WHITEHAVEN COAL

Biodiversity Management

Feral Animal Management

Most recent routine Whitehaven Biodiversity Feral Animal Control program (March 2022) was constrained due to flooding, the results included:

122 out of total 185 pigs trapped were from the Maules Offset properties; and,
426 out of total 1470 baits (1080) taken were from the Maules Offsets properties.

Weed Control

Spraying of Summer growing invasive grasses like Buffel, African Lovegrass and Coolati Grass completed.

Targeted seasonal weed control for Sweet Briar and Box Thorn completed.

Maintenance of fire break tracks to control excessive vegetation growth ongoing given good seasonal conditions.

Fencing & Waste Management

Final removal of waste stockpiles from Wirradale, Bimbooria and Velyama completed derelict infrastructure removal program.

Additional fencing constructed for Mt Lindesay and Bimbooria as well as new Heritage Site had demarcation fencing installed.

Biodiversity Management

Threatened Flora

Quarterly inspections of Threatened species is ongoing;

Surveillance of flowering Tylophora plants ongoing but no seed development as yet;

Good survival of Pomaderris plantings from last year with some plants flowering;



Biodiversity Management

Upcoming works:

- Quarterly Pest Animal Monitoring and Control Program in June 2022.
- Continued seasonal Weed Control Programs.
- Annual Reveg Planning and Assessment Inspections.
- Quarterly Threatened Flora Inspections and Programs.
- Execute for Annual Ecological Burn Program.
- Continue Heritage & Ecology Due Diligence Assessments.
- Continued Fencing/Maintenance works.

Community



WHITEHAVEN COAL

Community

- Feedback and Complaints for all Whitehaven sites can be made to:

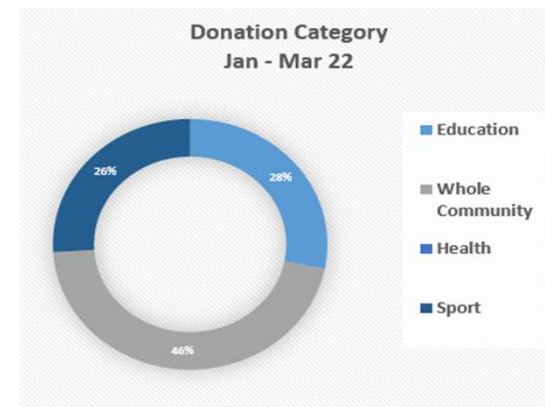
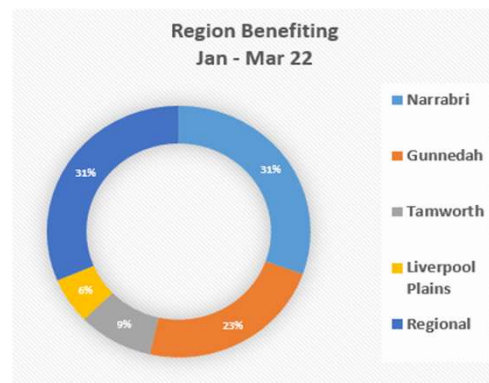
1800 WHAVEN (1800 942836)

- Each Whitehaven site has a site specific feedback email address. Maules Creek email address is: MaulesCreekCoal@whitehavencoal.com.au
- Complaints details: 2 complaints received during Q1

Date	Method	Category	Nature Of Complaint	MCCM Response
11/01/2022	Email	Blast	Complaint received from Local resident relating to vibration following a blast at MCCM.	MCC reviewed the monitoring data from a location in close proximity to complainant, this indicated compliance with blasting conditions. This information was provided to the resident. All information was also supplied to the EPA for their records.
22/02/2022	Phone	Bus	Complaint received from a community member relating to the park-up location of employees transport bus.	MCC reviewed the location and the bus location was moved.

Community

- Whitehaven continues to support the local Community with donations and sponsorships.
- More information on Sponsorships and Donations can be found at:
 - <https://whitehavencoal.com.au/sustainability/community/donations-sponsorships/>
- Donations for Jan – Mar 2022 almost \$198,000 spent in the local community.
- Highlights - over \$50,904 to Westpac Rescue Helicopter (matching Employee donations), \$10,000 to Country Education Foundation Namoi and \$6,500 to Nurruby Boggabri Community Childcare Centre & Preschool, \$6,000 to Boggabri Lions Club, \$5,000 to Currabubula Preschool etc.



Community continued

- Whitehaven attended the Narrabri Shire Council (NSC) Childcare Focus Group at Crossing Theatre
 - Discussion on the limitations and potential solutions to Childcare issues in Narrabri
 - Further surveys being carried out by NSC as per attached



NARRABRI SHIRE COUNCIL IS UNDERTAKING WIDESPREAD COMMUNITY CONSULTATION TO EXAMINE THE ACCESSIBILITY OF CHILDCARE FOR CHILDREN AGED BIRTH TO 14 YEARS WITHIN THE REGION.

The survey will examine current and future childcare supply and demand, identify gaps, issues, and gain the community's perspective on potential opportunities in the area.

The survey is aimed at parents, grandparents, caregivers, kinship carers, those planning to care for children in the future, and those interested in the topic.

The survey is open until Tuesday, 31 May 2022. Please scan the QR code to participate.



If you have any further enquiries regarding the survey or accessibility, please contact Narrabri Shire Council on 02 6799 6866 or council@narrabri.nsw.gov.au.

**Families
AT WORK**
WORKLIFE SPECIALISTS

NARRABRI SHIRE
DISCOVER THE POTENTIAL

KU
Children's Services
Since 1985

AHS Project Works



The AHS system operated through March and April until we were delayed by unforeseen controls that would not allow viable production for the AHS work area. We are now moving towards recommencement soon and potential expansion by the end of 2022.

Hitachi have released new enhancements that have provided genuine production benefits such as refining the top-side loading process, improving AHS live map updates, enhanced Autonomous Haul Truck (AHT) Lidar detection logic at dumps and reducing the AHT recovery time.

The AHS project will recommence operation at the end of May with new features and system upgrades to accompany the commencement of our longest haul route for an autonomous fleet at Maules Creek.

Old issue – If an AHT were to encounter a mechanical breakdown on an AHS haul road, in most circumstances there would be a significant delay to operations as all AHTs behind the break down would queue until the AHT was removed.

New Features – Hitachi are working on a new overtaking feature which creates a temporary path around the AHT (or other hazard), allowing minimal disruption to other AHTs while on their haul cycle. This is a significant improvement to the current system and valuable gain for Maules Creek.

A blue hexagonal logo with the text "Hitachi Technical Updates" in black, centered within the hexagon.

Hitachi Technical
Updates

Old issue – When both front speed sensors give a bad reading at the same time (e.g., harness failure) the AHT was not able to control speed properly and the system had to apply service brakes to avoid AHT going off the path.

New Features – An improved logic that includes a modification on how the rear speed sensor readings are used has been implemented to have a more robust speed control.

Maules Creek Coal Mine Approvals Update



WHITEHAVEN COAL

Blast Management Plan

The review comprises of the following

- **Update of the conditions to mirror PA10_0138 and EPL 20221 following amendments to licensing documents**
- **Align BLMP and the BTM Strategy in relation to scheduling and delays between blasting activities across the BTM**
- **Update of the consultation process between the BTM mines and the community.**
- **Formalise use of portable fume monitors when wind direction is between 90° and 270°**

Modification 9 – BOS and ETL

The Modification would comprise the following:

- modification of the MCCM biodiversity offset strategy to align the offset areas required under PA 10_0138 with the offset areas proposed to meet the requirements of the EPBC Act approval (EPBC 2010/5566); and
- construction of an ETL (including poles and overhead wires) within a 20 metre (m) corridor to connect the Roma Bore pump to an existing 11 kilovolt (kV) powerline which runs approximately 700 m to the west of the Roma.
- No changes to the coal mining and processing rate, mining method, mine life or rail movements are proposed as part of the Modification.
- It is anticipated that the Modification application and Modification Report will be lodged in Q2 CY22 and subsequently placed on public exhibition for comment.



Maules Creek CCC briefing - Water



WHITEHAVEN COAL

Enforceable Undertaking update

- WMP to be resubmitted following consultation with regulators in May.
- Construction of the 4 highwall dams completed
- Installation of stream monitoring equipment in June
- Clean water system operational however adequate water capture for commissioning has not occurred.



Thank you

www.whitehavencoal.com.au



WHITEHAVEN COAL

Briefing Note

To: Maules Creek Coal Mine CCC Members

From: Maules Creek Coal Mine (MCC)

Date: 25 May 2022

Reference: Responses to questions MCC CCC May 2022 Meeting

Subject: Responses to MCC CCC Actions and Questions

Action	Response
Action 1. Data for Currawidgen and provide to JW and CCC	Data is accessible through the NSW water portal and has been sent to JW and DR https://realtimedata.waternsw.com.au/
Action 2. include property map for biodiversity	Noted this will be included in the next presentation
Action 3. DS to speak with SE re fencing	Complete
Action 5. Emma Bulkeley to send David Ross link to Modification 9 when it live	The Modification report is still to be lodged with the DPE
Action 6. WHC to send link for the Annual Report for DR to circulate to CCC members	https://app.epa.nsw.gov.au/prpoeoapp/ In licencing enter 20221 which pull up the annual returns against the MCC EPL
Action 7. WHC to provide a summary of the polystyrene beads	WHC has made a statement on their website https://whitehavencoal.com.au/maules-creek-coal-pty-ltd-is-convicted-for-three-offences-of-polluting-waters-at-back-creek/

Maules Creek Coal Mine Community Consultative Committee Meeting #37

Environmental Monitoring Report For the Q1 period, January – March 2022

Attended Noise Monitoring

Maules Creek Coal (MCC) engaged an independent acoustic consultant to conduct LAeq (15minutes) and LA1 (1 minute) attended noise monitoring at six monitoring locations on site. The monitoring was carried out over January to March 2022.

A. LAeq, 15minute; GENERATED BY MCCM AGAINST OPERATIONAL DAY NOISE CRITERIA; JANUARY – MARCH 2022.

The results show that MCCM is within EPL 20221 compliance limits, that operations did not exceed the applicable LAeq (15minute) criteria of 35dB and the EPA's Noise Policy for Industry compliance guidelines.

Table 1 - January Noise Monitoring

Location	Start Date and Time	Wind Speed m/s	Rainfall mm	Criterion dB	Criterion Applies ¹	MCCP LAeq dB ²	Exceedance dB ³
NM1	10/01/2022 22:30	2.7	0.0	35	Yes	<20	Nil
NM2	10/01/2022 23:30	3.9	0.0	39	No	<20	NA
NM3	10/01/2022 23:40	4.0	0.0	35	No	IA	NA
NM4	10/01/2022 23:00	2.8	0.0	35	Yes	<20	Nil
NM5	10/01/2022 22:00	2.1	0.0	35	Yes	IA	Nil
NM6	10/01/2022 23:56	3.8	0.0	35	No	IA	NA

Notes:

1. Noise emission limits do not apply during periods of rainfall or winds greater than 3 metres per second (at a height of 10 metres);
2. Site-only LAeq,15minute attributed to MCCP, including modifying factors if applicable; and
3. NA in exceedance column means criterion was not applicable due to atmospheric conditions outside those specified in project approval.

Table 2 – February Noise Monitoring

Location	Start Date and Time	Wind Speed m/s	Rainfall mm	Criterion dB	Criterion Applies ¹	MCCP LAeq dB ²	Exceedance dB ³
NM1	08/02/2022 22:45	0.3	0	35	Yes	<25	Nil
NM2	08/02/2022 23:15	0.5	0	39	Yes	<25	Nil
NM3	09/02/2022 00:05	0.6	0	35	Yes	IA	Nil
NM4	08/02/2022 23:45	0.1	0	35	Yes	<20	Nil
NM5	08/02/2022 22:00	0.5	0	35	Yes	25	Nil
NM6	09/02/2022 00:09	0.8	0	35	Yes	<20	Nil

Notes:

1. Noise emission limits do not apply during periods of rainfall or winds greater than 3 metres per second (at a height of 10 metres);
2. Site-only LAeq,15minute attributed to MCCP, including modifying factors if applicable; and
3. NA in exceedance column means criterion was not applicable due to atmospheric conditions outside those specified in project approval.

Table 3 – March Noise Monitoring

Location	Start Date and Time	Wind Speed m/s	Rainfall mm	Criterion dB	Criterion Applies ¹	MCCP LAeq dB ²	Exceedance dB ³
NM1	07/03/2022 22:30	0.3	0.0	35	Yes	20	Nil
NM2	07/03/2022 23:30	0.6	0.0	39	Yes	25	Nil
NM3	07/03/2022 23:33	0.7	0.0	35	Yes	1A	Nil
NM4	07/03/2022 23:00	0.6	0.0	35	Yes	<20	Nil
NM5	07/03/2022 22:00	1.0	0.0	35	Yes	1A	Nil
NM6	07/03/2022 23:56	0.3	0.0	35	Yes	<20	Nil

Notes:

1. Noise emission limits do not apply during periods of rainfall or winds greater than 3 metres per second (at a height of 10 metres);
2. Site-only LAeq,15minute attributed to MCCP, including modifying factors if applicable; and
3. NA in exceedance column means criterion was not applicable due to atmospheric conditions outside those specified in project approval.

B. LA1, 1minute; GENERATED BY MCC AGAINST OPERATIONAL NIGHT NOISE CRITERIA; JANUARY – MARCH 2022.

MCC's EPL 20221 also has a '1 Minute - Night' criteria (LA1) that applies from 10pm to 7am Monday to Saturday & 10pm to 8am Sundays and Public Holidays. Results are shown on tables 4-6.

The results show that MCCM is within EPL 20221 compliance limits, that operations did not exceed the applicable LA1 (1minute) criteria of 45dB.

Table 4– January Noise Monitoring – Night

Location	Start Date and Time	Wind Speed m/s	Rainfall mm	Criterion dB	Criterion Applies ¹	MCCP LA1,1min dB ²	Exceedance dB ³
NM1	10/01/2022 22:30	2.7	0.0	45	Yes	<20	Nil
NM2	10/01/2022 23:30	3.9	0.0	45	No	<20	NA
NM3	10/01/2022 23:40	4.0	0.0	45	No	1A	NA
NM4	10/01/2022 23:00	2.8	0.0	45	Yes	20	Nil
NM5	10/01/2022 22:00	2.1	0.0	45	Yes	1A	Nil
NM6	10/01/2022 23:56	3.8	0.0	45	No	1A	NA

Notes:

1. Noise emission limits do not apply during periods of rainfall or winds greater than 3 metres per second (at a height of 10 metres);
2. Site-only LAeq,15minute attributed to MCCP, including modifying factors if applicable; and
3. NA in exceedance column means criterion was not applicable due to atmospheric conditions outside those specified in project approval.

Table 5 – February Noise Monitoring – Night

Location	Start Date and Time	Wind Speed m/s	Rainfall mm	Criterion dB	Criterion Applies ¹	MCCP LA1,1min dB ²	Exceedance dB ³
NM1	08/02/2022 22:45	0.3	0	45	Yes	<25	Nil
NM2	08/02/2022 23:15	0.5	0	45	Yes	<25	Nil
NM3	09/02/2022 00:05	0.6	0	45	Yes	IA	Nil
NM4	08/02/2022 23:45	0.1	0	45	Yes	<20	Nil
NM5	08/02/2022 22:00	0.5	0	45	Yes	28	Nil
NM6	09/02/2022 00:09	0.8	0	45	Yes	<20	Nil

Notes:

1. Noise emission limits do not apply during periods of rainfall or winds greater than 3 metres per second (at a height of 10 metres);
2. Site-only LAeq,15minute attributed to MCCP, including modifying factors if applicable; and
3. NA in exceedance column means criterion was not applicable due to atmospheric conditions outside those specified in project approval.

Table 6 – March Noise Monitoring – Night

Location	Start Date and Time	Wind Speed m/s	Rainfall mm	Criterion dB	Criterion Applies ¹	MCCP LA1,1min dB ²	Exceedance dB ³
NM1	07/03/2022 22:30	0.3	0.0	45	Yes	25	Nil
NM2	07/03/2022 23:30	0.6	0.0	45	Yes	40	Nil
NM3	07/03/2022 23:33	0.7	0.0	45	Yes	IA	Nil
NM4	07/03/2022 23:00	0.6	0.0	45	Yes	<20	Nil
NM5	07/03/2022 22:00	1.0	0.0	45	Yes	IA	Nil
NM6	07/03/2022 23:56	0.3	0.0	45	Yes	<20	Nil

Notes:

1. Noise emission limits do not apply during periods of rainfall or winds greater than 3 metres per second (at a height of 10 metres);
2. Site-only LAeq,15minute attributed to MCCP, including modifying factors if applicable; and
3. NA in exceedance column means criterion was not applicable due to atmospheric conditions outside those specified in project approval.

Wind Direction during Attended Monitoring

Wind direction data is collected from the Maule's Creek Coal Mine (MCCM) Automated Weather Station (AWS). Wind data for the duration of the attended monitoring assessment, recorded at the MCCM AWS is presented in the table below.

Table 7 - Prevailing Wind Direction

Monitoring Date	Prevailing Wind Direction
January	SE
February	SE
March	S/SE

Blast Monitoring

There were 30 blasts at MCCM during Q1 2022. All blast monitoring results recorded within the reporting period have complied with applicable overpressure and ground vibration limits specified in the respective approvals.

Table 8 – Blast Results Summary

Parameter	Units	Frequency	Number	Average	Max	100% Limit	Exceedance (Yes / No)
Noise	dB (Lin Peak)	All	30	94.2	113.2	120	No
Vibration	mm/s		30	0.20	1.75	10	No

Air Quality

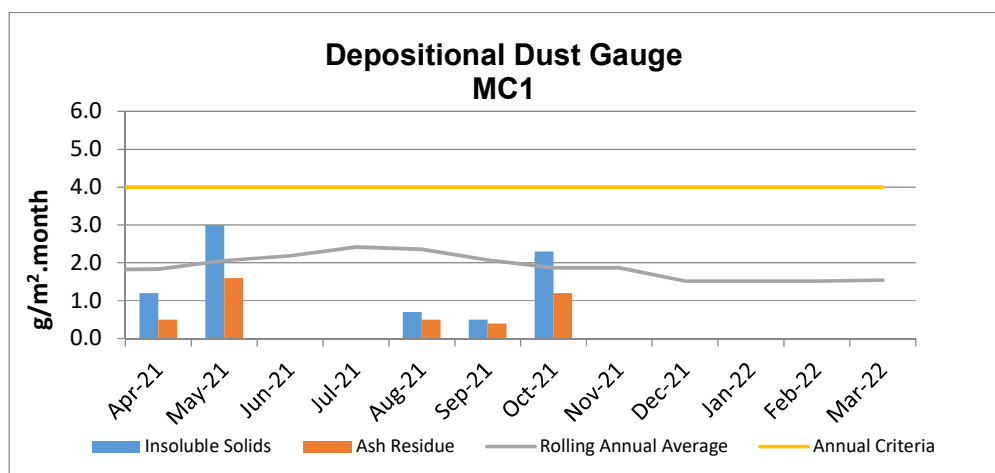
A. Total Depositional Dust

The 12 monthly rolling annual average remains below the relevant Project Approval (PA 10_0138) criteria of 4g/m²/month for the respective monitoring points.

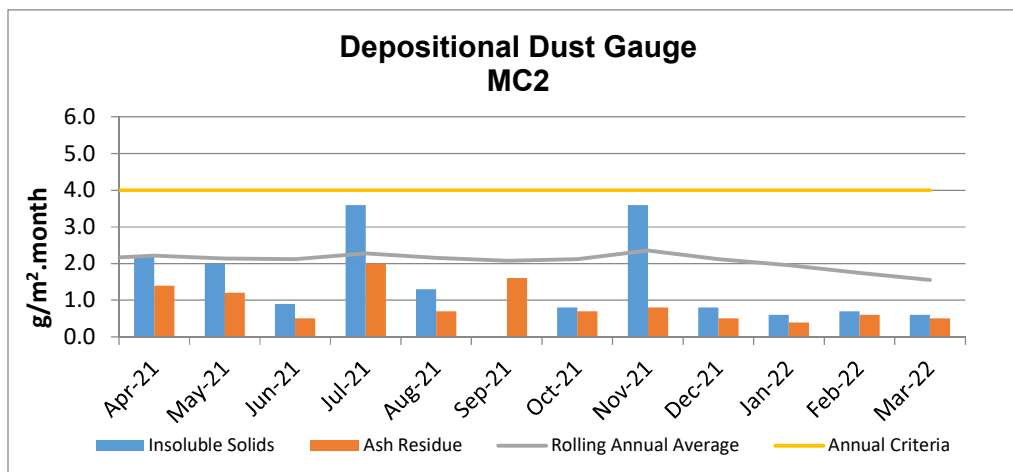
Table 9 – Deposited Dust Gauge Results [g/m²/month]

MONTH	MC1	MC2	MC3	MC4
January	10.3 ^c	0.6	2.6	3.6
February	22 ^c	0.7	1.5	0.7
March	7.2 ^c	0.6	2.3	0.3
12 MONTH ROLLING AVERAGE	1.5	1.6	1.5	1.2

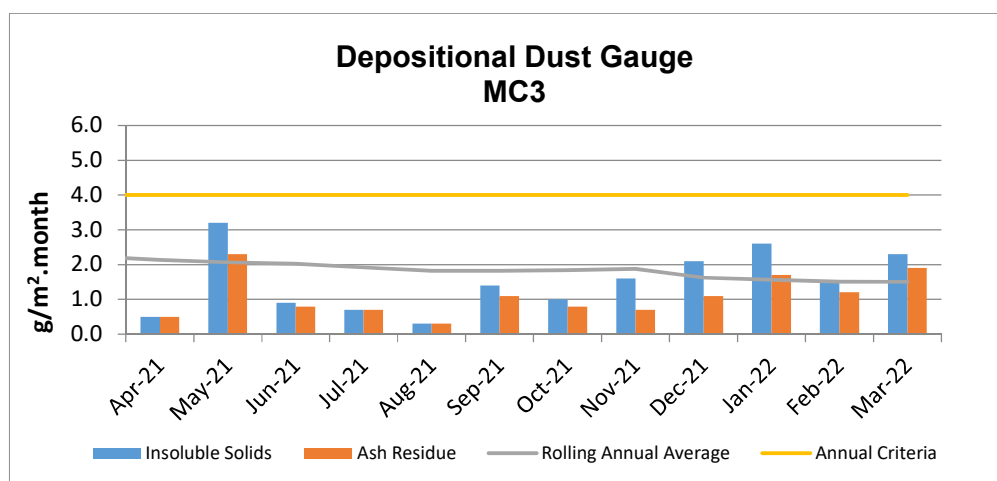
^c samples contaminated by bird dropping, decomposed insects or vegetable matter.



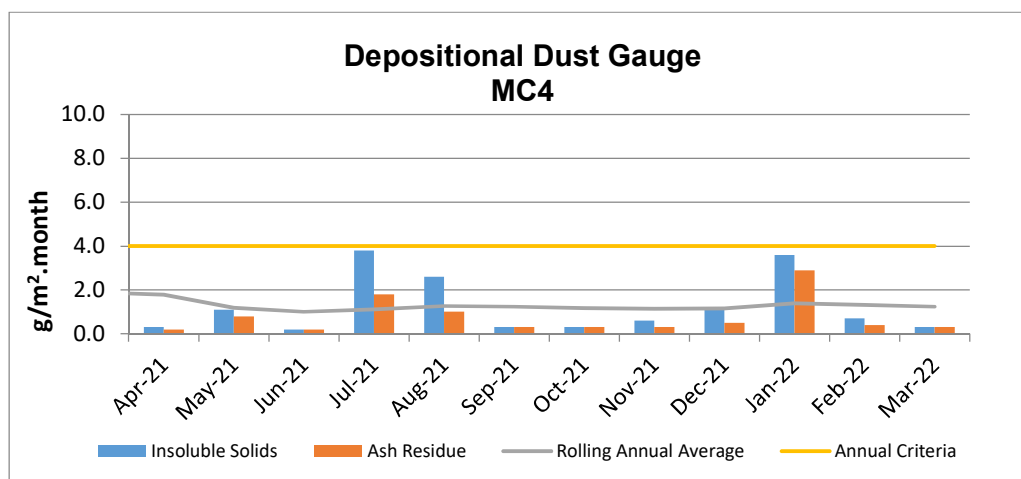
* Blank cells indicate sample periods where the sample has been contaminated and excluded from the results tables due to contaminated material (insect larvae, bird droppings, vegetation etc.).



* Blank cells indicate sample periods where the sample has been contaminated and excluded from the results tables due to contaminated material (insect larvae, bird droppings, vegetation etc.).



* Blank cells indicate sample periods where the sample has been contaminated and excluded from the results tables due to contaminated material (insect larvae, bird droppings, vegetation etc.).

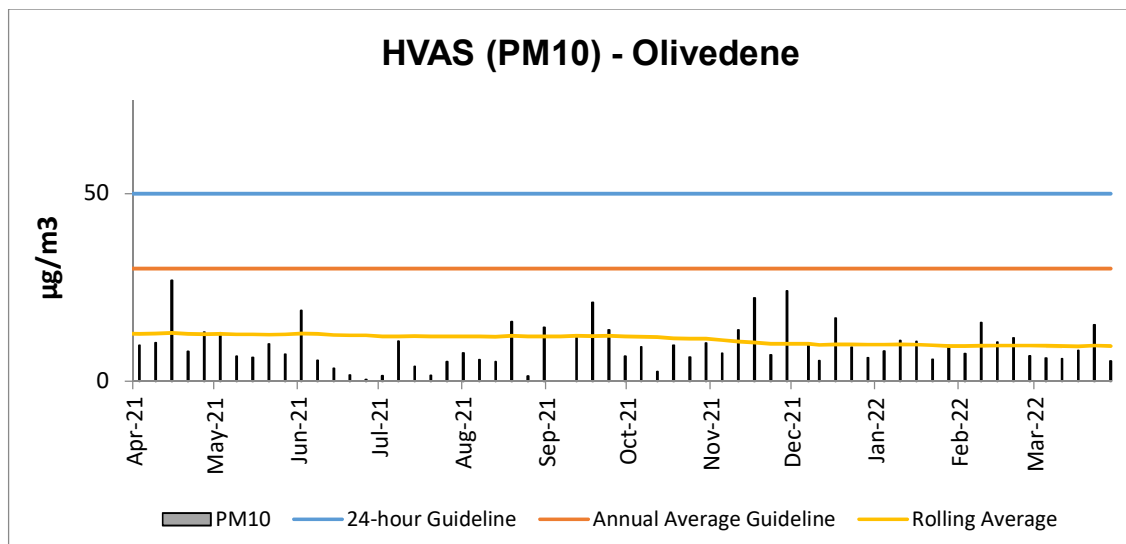


* Blank cells indicate sample periods where the sample has been contaminated and excluded from the results tables due to contaminated material (insect larvae, bird droppings, vegetation etc.).

B. High Volume Air Sampling (HVAS)

The HVAS monitor is located on the property 'Olivedene,' a mine owned property on Therribri Road. During past 12 months, there have been no exceedances of the 24-hour average of 50 $\mu\text{g}/\text{m}^3$.

HVAS PM₁₀ 2021 Rolling Annual Average was **9.4 $\mu\text{g}/\text{m}^3$** , which is below the Annual Average Guideline of 30 $\mu\text{g}/\text{m}^3$.



C. TEOM - PM10 Results

The annual rolling average for PM10 at the Maules Creek Coal TEOM was **5.9 $\mu\text{g}/\text{m}^3$** , which is below the Project Approval annual average criteria of 30 $\mu\text{g}/\text{m}^3$ as shown in the following figure. There have been no exceedances of the 24 hour average for Q1.

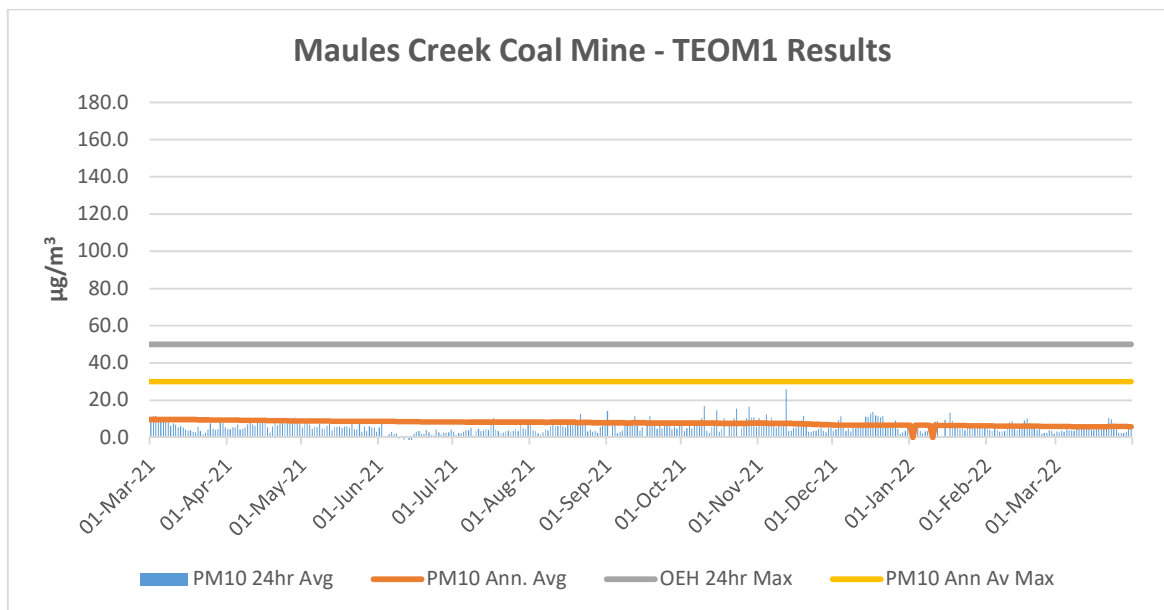


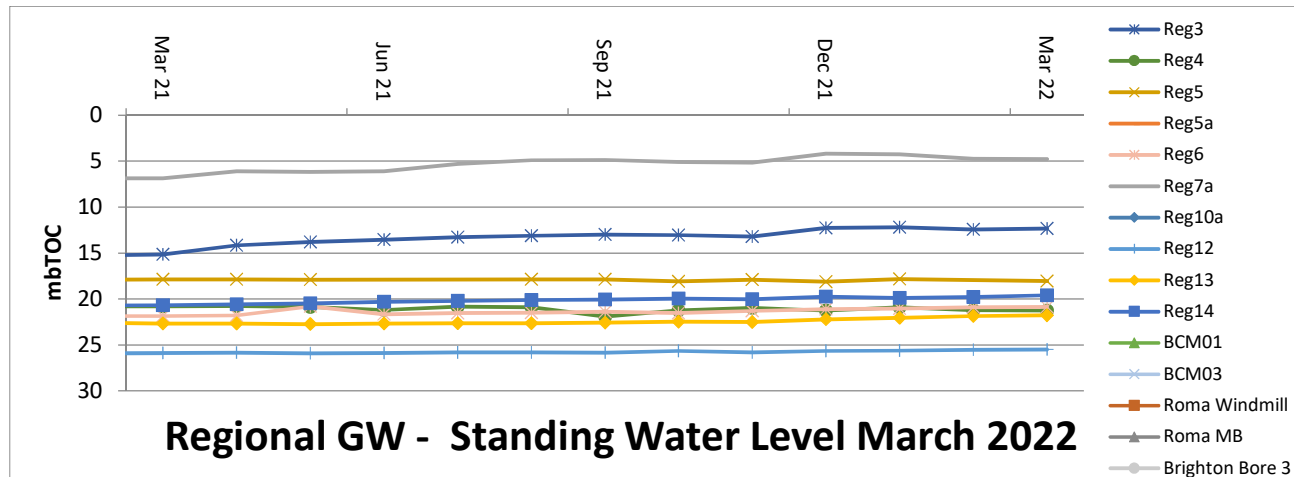
Figure 1 - TEOM Result – Particulate Matter PM₁₀ $\mu\text{g}/\text{m}^3$

* Blank columns indicate sample periods where there was either power outage, maintenance or other related causes.

Water Monitoring

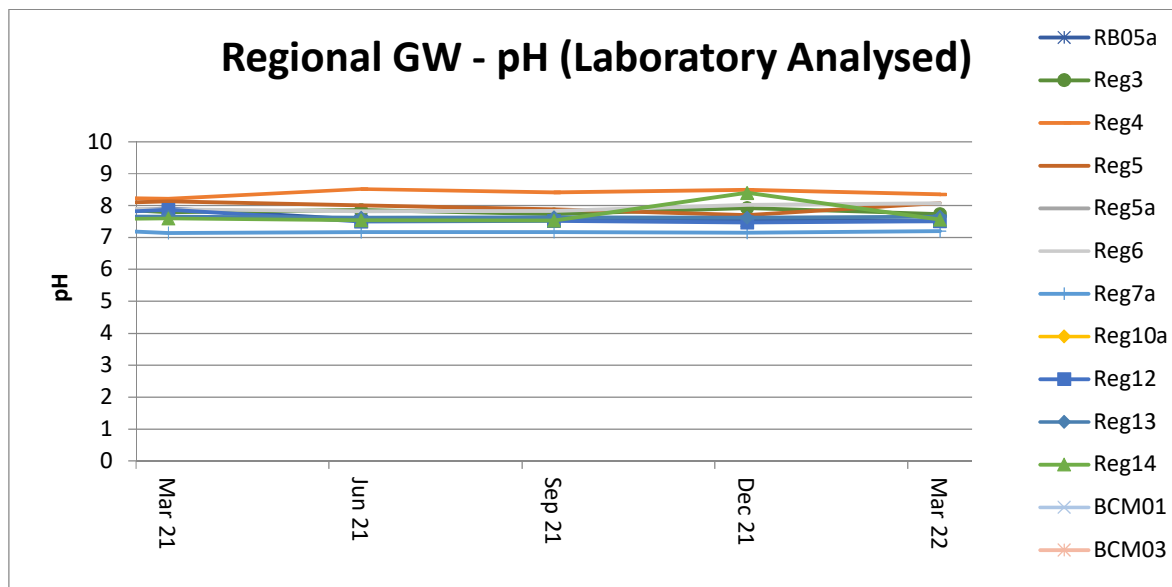
A. Groundwater

Groundwater monitoring results in open standpipe piezometers show levels to be relatively stable. The Regional bores were installed between Q4, 2013 and Q1, 2014. BCM01, BCM03, Reg10 are shallow bores which have remained dry since construction in 2013.



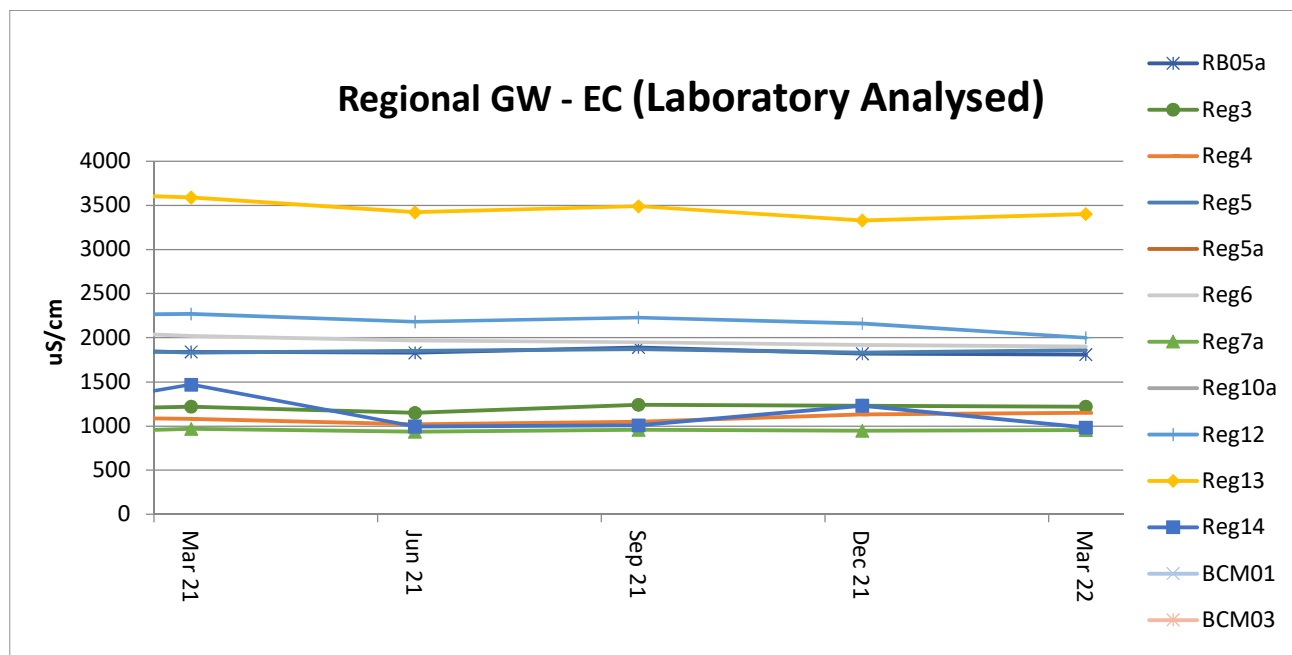
Acidity / Alkalinity (pH)

Over the past twelve months pH readings across the regional bores have remained static with very little fluctuation.



Electrical Conductivity

Laboratory Electrical Conductivity (EC) levels are all within historic groundwater EC range of 500 μ S/cm to 2,500 μ S/cm, with the exception of monitoring bore Reg13 which has a historic groundwater EC range of 2,500 μ S/cm to 4,100 μ S/cm. Within the last twelve months EC has remained static.

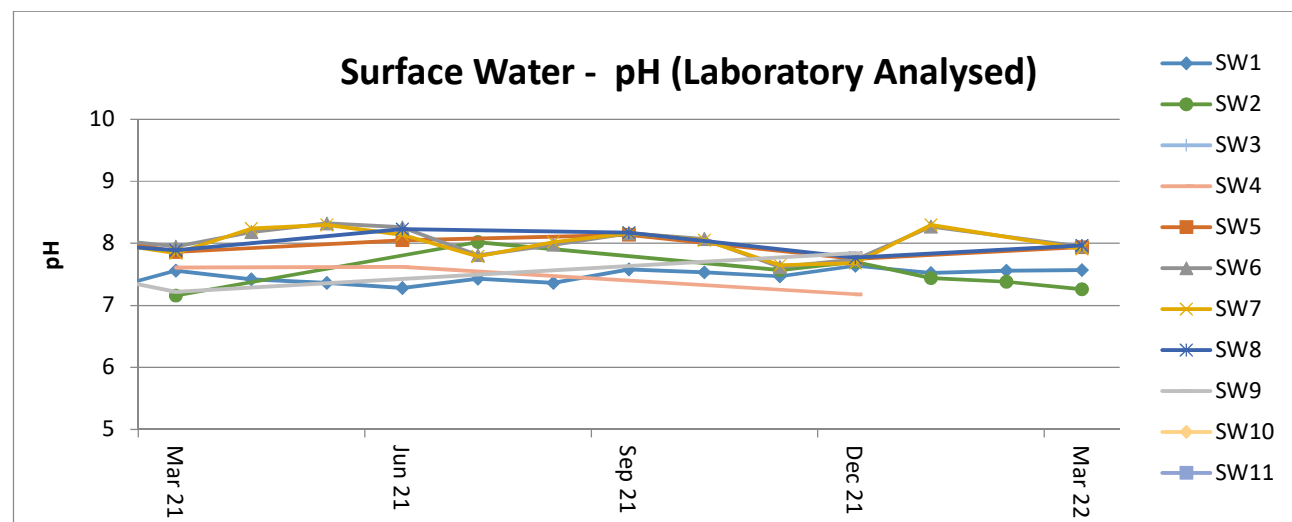


B. Surface Water – Creeks and Rivers

Routine surface water monitoring is conducted in surrounding creeks and rivers on a monthly basis. Results for parameters including pH, EC and Total Suspended Solids (TSS) are shown in the figures below. There are eleven surface water monitoring points, of which a maximum of six sites were able to be sampled during Q1 2022.

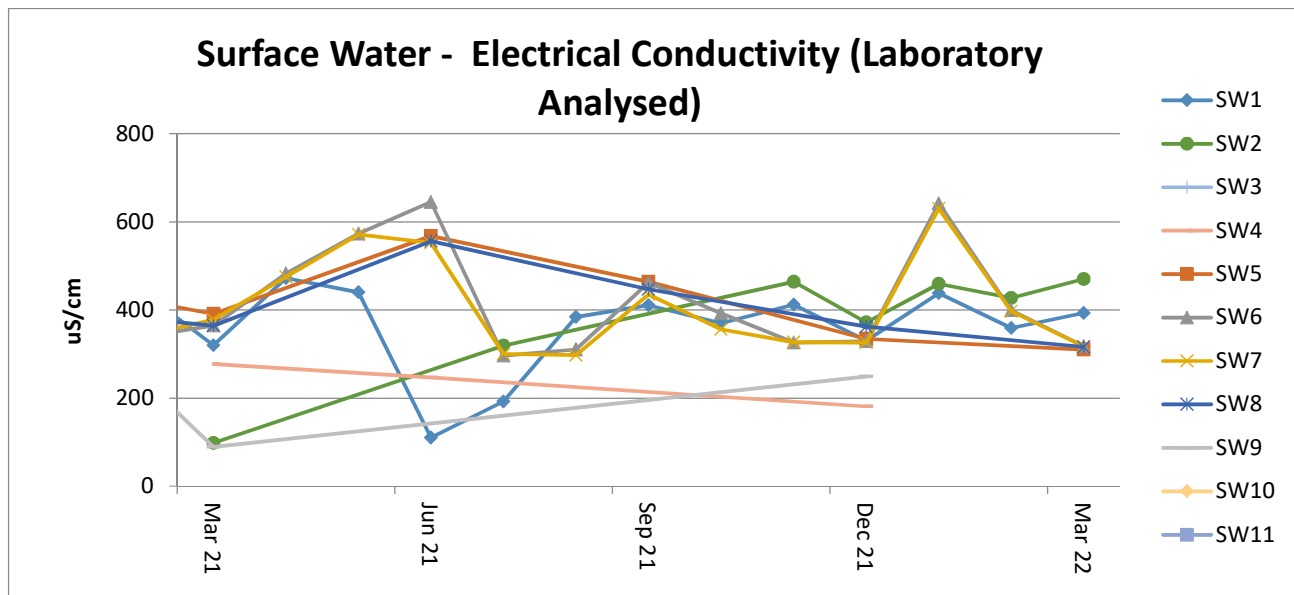
Acidity / Alkalinity (pH)

Monitoring results for pH in creeks and rivers surrounding MCCM are all trending within the ANZECC range for Irrigation, Ecosystem Health and Recreation.



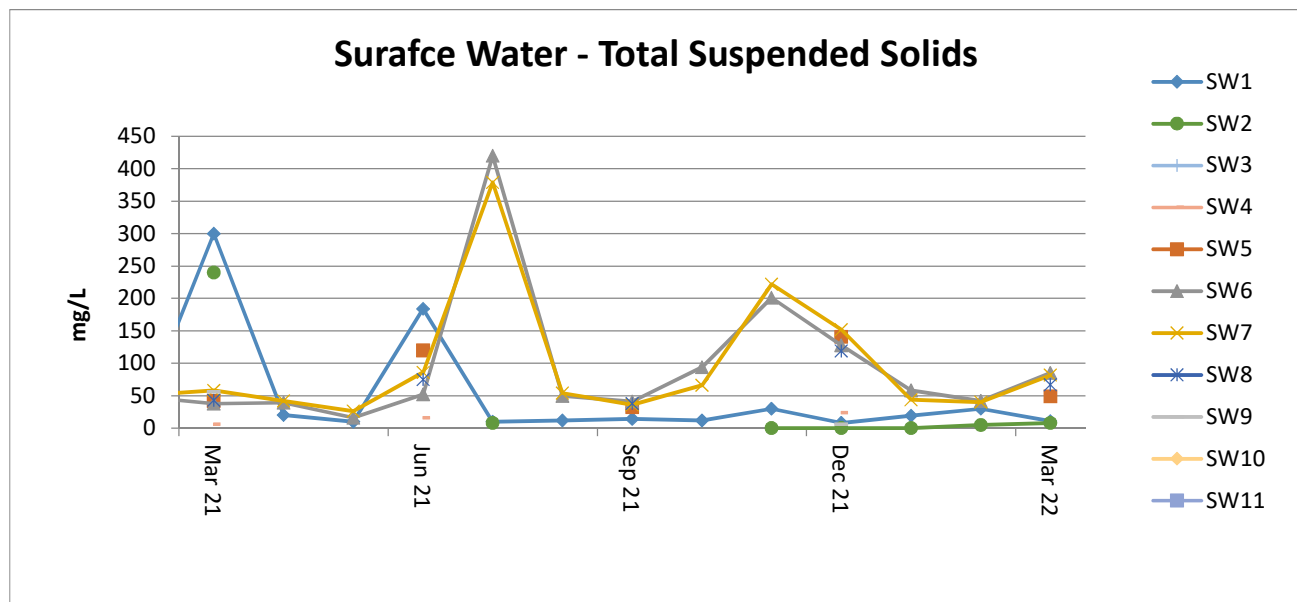
Electrical Conductivity

Surface water EC trends have remained consistent with SW5, SW6, SW7 and SW8 all historically variable. SW5, SW6, SW7 and SW8 are points along the Namoi River which are subject to regulated and variable flow regimes.



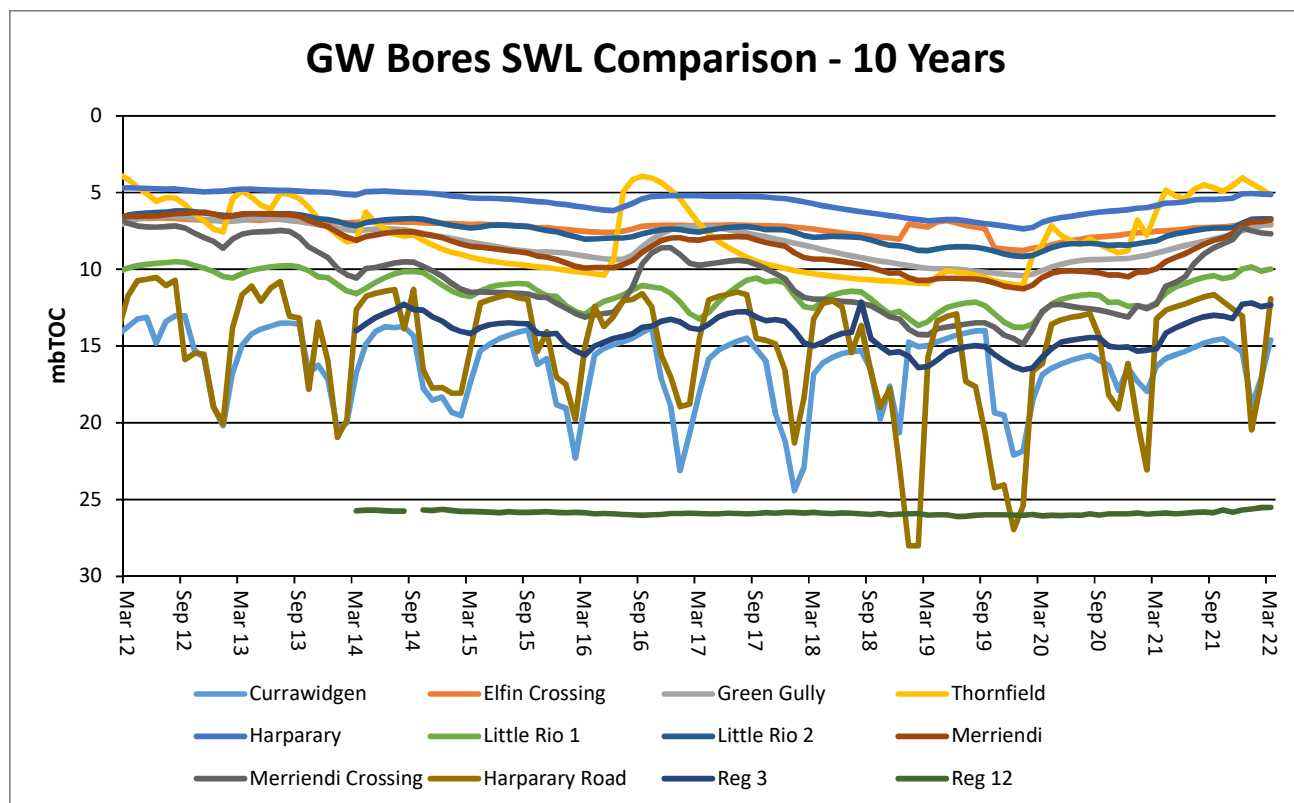
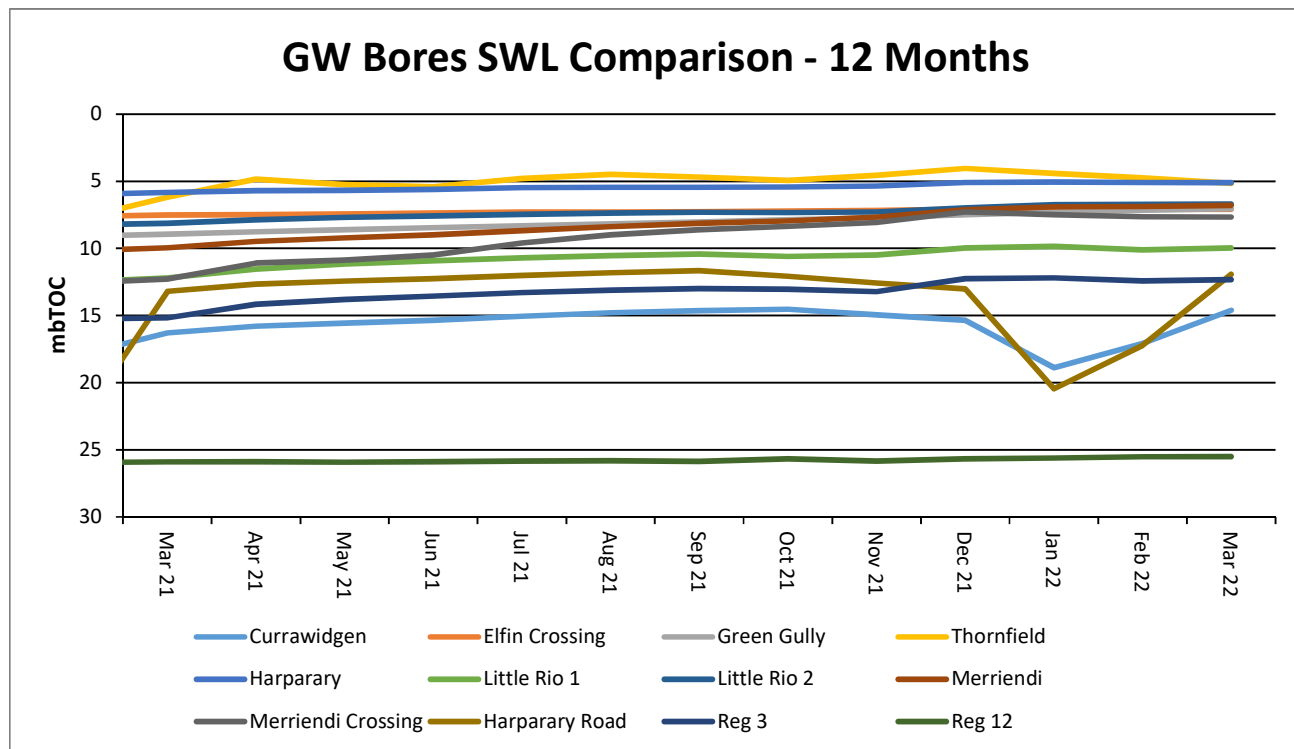
Total Suspended Solids (TSS)

Surface water TSS trends have remained generally consistent with historical results. SW5, SW6, SW7 and SW8 are historically variable as they are located along the Namoi River which is subject to regulated and variable flow regimes. The Q3 results were elevated due to significant rainfall events, as demonstrated on the graph below TSS levels have since decreased



Regional Groundwater monitoring

Maules Creek Coal Mine monitors regional bores across the region.



Rehabilitation

Progressive rehabilitation works are ongoing. 20 hectares have been reshaped in Q1 with seeding to occur in May 2022.

Feral Animal Management

Most recent routine Whitehaven Biodiversity Feral Animal Control program (March 2022) was constrained due to flooding, the results included:

- 122 out of total 185 pigs trapped were from the Maules Offset properties; and,
- 426 out of total 1470 baits (1080) taken were from the Maules Offsets properties.

Weed Control

- Spraying of summer growing invasive grasses like Buffel, African Lovegrass and Coolati Grass completed.
- Targeted seasonal weed control for Sweet Briar and Box Thorn completed.
- Maintenance of fire break tracks to control excessive vegetation growth ongoing given good seasonal conditions.

Fencing & Waste Management

- Final removal of waste stockpiles from Wirradale, Bimbooria and Velyama completed derelict infrastructure removal program.
- Additional fencing constructed for Mt Lindesay and Bimbooria as well as new Heritage Site had demarcation fencing installed.

Community Complaints

- **Two** complaints were received during Q1 2022.

Date	Method	Category	Nature Of Complaint	MCCM Response
11/01/2022	Email	Blast	Complaint received from Local resident relating to vibration following a blast at MCCM.	MCC reviewed the monitoring data from a location in close proximity to complainant, this indicated compliance with blasting conditions. This information was provided to the resident. All information was also supplied to the EPA for their records.
22/02/2022	Phone	Bus	Complaint received from a community member relating to the park-up location of employees transport bus.	MCC reviewed the location and the bus location was moved.