

Minutes: Minutes of the Meeting of the Maules Creek Coal Community Consultative Committee held on **Wednesday 15 May 2024** at the Boggabri Golf Club commencing at 1.09 pm.

Members Present: Elizabeth O’Hara (EOH) – Community Representative, Libby Laird (LL) – Community Representative, Robyn Grover (RG) – Community Representative, Steve Eather (SE) – Community Representative, Jorge Moraga - General Manager Maules Creek Operations, Darren Swain (DS) – WHC, Emma Bulkeley (EB) – WHC.

Apologies: Cr Brett Dickinson – (BD) Narrabri Shire Council

Independent Chair: Michael J. Silver OAM (MJS)

Agenda Item	Discussion	Action/By Whom
1.	Welcome and Apologies – MJS welcomed everyone to his first meeting as Chair.	
2.	Acknowledgement of Country - The Chair acknowledged the Traditional Owners of the land on which the meeting is being held and their continuing connection to land, water, and culture, paying respects to their Elders past, present and emerging.	
3.	Declaration of Pecuniary or Other Interests - EOH has a small bundle of WHC shares. RG has a family member working at Maules Creek Coal Mine. MJS expenses as chair are borne by the proponent.	
4.	Minutes of the Previous Meeting – Members noted the record of the minutes from the meeting held on 14 February 2024. EOH raised concerns regarding the record of certain items in the meeting. MJS indicated that this could be addressed in Business Arising.	
5.	Business Arising from the Previous Minutes EOH raised concerns regarding the contents of the previous minutes in four areas. She indicated that she was uncomfortable with the way the CCC's Environmental Representative matter had been recorded and had issue with several items listed in General Business. MJS noted her concerns and requested that she forward her comments/amendments to him for review. He advised that following receipt and assessment of EOH's advice he would finalise the minutes of the February 2024 meeting and distribute the approved minutes to the Committee.	ACTION: MJS to review February 2024 Minutes.
6.	Correspondence 6.1 NSW Department Planning Housing & Infrastructure: Advising of appointment of MJS as Independent Chair of the Maules Creek Coal Community Consultative Committee – Noted. 6.2 R. Druce – Provision of Firefighting Equipment The Committee received the correspondence from Ms Roselyn Druce seeking support for additional Bushfire Equipment in the Narrabri Rural Fire Service District. SE advised that the local brigade is not able to source an additional vehicle through the Rural Fire Service – they would have to forego a vehicle to obtain another. MJS indicated that the bushfire assets are the responsibility of Narrabri Shire Council and as such discussions should proceed with Council regarding its support for such a proposal. DS advised that Whitehaven would take on board the request however there needs to be support from NSC and RFS before progressing the matter further. LL questioned when Fire trail maintenance is undertaken and whether it is occurring. SE indicated it is undertaken when funds are available. It was agreed that MJS advise Ms Druce that the matter needs to be taken up with NSC and the RFS seeking their support for the proposal before any further consideration is given to the matter. 6.3 P. Laird: Seeking support for a proposed Scoping Study for a Maules Creek Water Pipeline. MJS advised he had met with Phil Laird a few weeks back regarding his Maules Creek Water Pipeline proposal. MJS indicated there were a variety of matters that would need to be resolved before such a proposal could be considered from a local government and NSW Government perspective. DS question whether such a proposal could be supported by NSW Water given the	ACTION: MJS to respond to R. Druce that the matter needs to be taken up with NSC and the RFS ACTION: MJS to respond to Mr Laird that there are fundamental issues that need to be addressed.

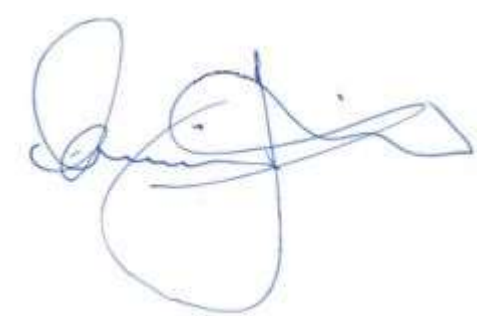
	fundamental issue of taking water from one zone to another and its probable inconsistency with the Water Sharing Plan. It was agreed that the primary issues of concern that need to be addressed be highlighted to Mr Laird.	
7.	<p>Proponent's Presentation</p> <p><i>EB presented the Proponent's Presentation. A copy of the presentation and the Monitoring Report is attached to the minutes.</i></p> <p>EB provided an overview of health and safety performance noting a total recordable injury frequency rate (TRIFR) of 3.51. JM explained that a policy review has occurred to ensure safety issues are appropriately evaluated. He advised that is critical to identify the hazards and put in place controls to ensure injuries are avoided. He noted that the trend indicates that injuries are reducing.</p> <p>EB noted that depositional dust remained below the relevant Project Approval (PA 10_0138) criteria of 4g/m2/month for the respective monitoring points. She also advised that there had been no exceedance at the High-Volume Air Sampler.</p> <p>The tapered element oscillating microbalance (TEOM PM10) at 'Avoca East' was 11.4 µg/m3 – below the criteria of 30µg/m3 as a twelve-month average. EOH questioned whether depositional dust of PM 2.5 was recorded. EB advised that although recorded there is no requirement to report on PM 2.5. The Committee noted the graph detailing the Regional Air Quality PM10 Comparison and discussed the location of monitors and data collection associated with the Regional Air Quality monitoring.</p> <p>EB provided an overview of groundwater levels and monitoring locations. EOH questioned how the groundwater data is sourced. EB took the question on notice.</p> <p>EB outlined the ground water levels over the last ten years. She noted that standing water levels had stabilised in the last 12 months.</p> <p>LL asked whether Whitehaven is aware of the UNSW ground water monitoring study in the Maules Creek area. Can Whitehaven provide information from the UNSW data to the CCC? DS advised that Whitehaven was aware of the study and would be seeking to use that data in its environmental assessment for the continuation project. DS advised he was not willing to provide data that did not belong to Maules Creek Coal Mine. MJS indicated he would make approaches to the UNSW regarding the availability of the ground water data.</p> <p>EB advised four hundred tyres had been disposed of in Quarter 1 in accordance with its Environmental Protection Licence.</p>	<p>ACTION: EB to advise how groundwater data is sourced</p> <p>ACTION: MJS to contact UNSW regarding availability of ground water data.</p>

	<p>EB noted the routine treatments in Whitehaven’s Biodiversity Feral Animal Control program. She also detailed the weed control undertaken via spot spraying/jetting on the Maules Biodiversity Properties. DS outlined how feral goats are rounded-up and sold with the proceeds going to a Landcare Fund from which high schools receive grant up \$15,000 for environmental projects.</p> <p>EB provided an update on the Onavale Reveg Project noting that 331ha was revegetated with ~26,000 trees and 960kg of native species to a native Box/Ironbark Woodland that will enhance and promote connectivity between the eastern Leard State Forest and Nandewar Range. She also noted that the 2024 microbat surveys were conducted over 6 weeks across Maules biodiversity properties and gave notice of upcoming biodiversity projects.</p> <p>The Committee noted that Modification 9 was approved on 20 March 2024 and that environmental monitoring and community consultation was ongoing in respect of the Continuation Project EIS. Consultations meetings are being conducted with NSC and landholders and EB indicated that it is anticipated that lodgement of the Project Application would occur in early 2025.</p> <p>DS highlighted the extent of community donations and sponsorships noting that \$183,960 had been invested in the community in the first quarter of 2024.</p> <p>MJS thanked EB for the presentation and invited further questions from the members.</p> <p>LL sought detail on the location of the water bores that are being monitored. DS took the question on notice. LL also questioned why water samples are taken from some bores rather than measuring standing water levels. DS explained that not all bores are accessible due to various barriers, viz. pumps in bores, plated bore, damage to bore casing or bore collapse.</p>	<p>ACTION: DS to provide locations of monitoring bores.</p>
8.	<p>Other Agenda Items</p> <p>Nil</p>	
9.	<p>General Business</p> <p>9.1 Environmental Representative – EOH commented on the need for an environmental representative on the CCC EOH advised that she does not satisfy the criteria to be considered an environmental representative.</p> <p>LL suggested that the environmental representative is a condition of approval and is important in the current Modification discussions. Inclusion of an environmental member makes for a better project, as would an aboriginal representative, as representatives with specific skills contribute a particular focus during consultation that community members do not have.</p>	<p>ACTION: MJS to discuss the environmental representative on the CCC with DPIE</p>

	<p>MJS advised he will discuss the matter with DPIE.</p> <p>EOH suggested that video conferencing during CCC meetings may enable those with the appropriate environmental qualification and skills to participate.</p> <p><i>Chair's Note: The Consolidated Consent for the Maules Creek Coal Mine, as of March 2024, provides in respect of a Community Consultative Committee the following:</i></p> <p><i>7. The Applicant must establish and operate a Community Consultative Committee (CCC) for the project to the satisfaction of the Planning Secretary. This CCC must be operated in general accordance with the Guidelines for Establishing and Operating Community Consultative Committees for Mining Projects (Department of Planning, 2007, or its latest version), and be operating within 6 months of the date of this approval.</i></p> <p><i>The CCC must include at least one member representing the Maules Creek community, one member from Aboriginal stakeholder groups, and seek to include some joint membership with CCCs for other operating coal mines within the Leard Forest Mining Precinct, unless otherwise agreed by the Planning Secretary.</i></p> <p><i>Notes:</i></p> <ul style="list-style-type: none"> <i>• The CCC is an advisory committee. The Department and other relevant agencies are responsible for ensuring that the Applicant complies with this approval; and</i> <i>• In accordance with the Department's guideline, the CCC should be comprised of an independent chair and appropriate representation from the Applicant, Council, recognised environmental groups and the local community.</i> <p>9.2 Water Management – EOH questioned the extent and detail of the information provided on water management. DS responded that information and data on ground water management is provided at each CCC meeting.</p> <p>9.3 Maules Creek Community Council v EPA – EOH advised on the matter currently before the Land and Environment Court.</p> <p>9.4 Future Tours – LL suggested a tour of monitoring bores in the future may be beneficial. MJS indicated he will consult with DS.</p> <p>9.5 Minutes – RG noted the quality of documenting of the last meeting may be due to a replacement stenographer.</p>	
10.	<p>Next meeting date</p> <p>Scheduled for August 2024 at the Boggabri Golf Club. MJS to confirm date and future meeting schedule.</p>	

Meeting Closed: 2.34 pm.

Approved:



Michael J. Silver
Independent Chair

6 June 2024

Appendix 1: Actions

Action No.	Description	Date Raised	Page No.	Status
1	MJS to review February 2024 Minutes.	15.05.24	2	
2	MJS to respond to R. Druce that the matter needs to be taken up with NSC and the RFS	15.05.24	2	
3	MJS to respond to Mr Laird that there are fundamental issues that need to be addressed.	15.05.24	2	
4	EB to advise how groundwater data is sourced.	15.05.24	3	
5	MJS to contact UNSW regarding availability of ground water data.	15.05.24	3	
6	DS to provide locations of monitoring bores.	15.05.24	4	
7	MJS to discuss the environmental representative on the CCC with DPIE	15.05.24	4	

Appendix 2: Input from CCC Members for Future Meetings (from October 2023)

Description
Future site tour options: <ul style="list-style-type: none">• Leard Forest Site Tour and presentation.• Tour of bores with hydrologist
Provision of Bush Fire Management Plans once revised.
Management of roads and access for fire management
Results of bird surveys
Experts for noise, dust, and water to attend if interest is there
When do the water models get updated?

Maules Creek Coal Mine Community Consultative Committee Meeting #45

Environmental Monitoring Report For the Q1 period, January – March 2024

Attended Noise Monitoring

Maules Creek Coal (MCC) engaged an independent acoustic consultant to conduct LAeq (15minutes) and LA1 (1 minute) attended noise monitoring at six monitoring locations on site.

A. NOISE GENERATED BY MCCM AGAINST OPERATIONAL DAY & NIGHT NOISE CRITERIA; JANUARY – MARCH 2023.

The results show that MCCM is within EPL 20221 compliance limits, that operations did not exceed the applicable; LAeq (15minute) 35dB Criteria, LA1 (1Minute) 45dB Criteria and the EPA's Noise Policy for Industry compliance guidelines.

Table 1 – January Noise Monitoring

Location	Start date and Time	Wind		Stability class	Very enhancing? ¹	Limits, dB ¹		Site levels, dB ²		Exceedances, dB	
		Speed m/s	Direction ³			L _{Aeq,15minute}	L _{Amax}	L _{Aeq,15minute}	L _{Amax}	L _{Aeq,15minute}	L _{Amax}
NM1	16/01/2024 22:30	2.9	85	D	No	35	45	IA	IA	Nil	Nil
NM2	16/01/2024 23:30	4.0	63	D	Yes	44	50	IA	IA	Nil	Nil
NM3	16/01/2024 23:30	4.0	63	D	Yes	40	50	IA	IA	Nil	Nil
NM4	16/01/2024 23:00	3.3	70	D	Yes	40	50	IA	IA	Nil	Nil
NM5	16/01/2024 22:00	3.8	74	D	Yes	40	50	IA	IA	Nil	Nil
NM6	16/01/2024 23:55	3.0	55	D	No	35	45	IA	IA	Nil	Nil

Notes: 1. Noise limits are adjusted by +5 dB during 'very enhancing meteorological conditions' in accordance with the NPfI.

2. Site-only LAeq,15minute, includes modifying factor penalties if applicable.

3. Degrees magnetic north, "-" indicates calm conditions.

Table 2 – February Noise Monitoring

Location	Start date and Time	Wind		Stability class	Very enhancing? ¹	Limits, dB ¹		Site levels, dB ²		Exceedances, dB	
		Speed m/s	Direction ³			L _{Aeq,15minute}	L _{Amax}	L _{Aeq,15minute}	L _{Amax}	L _{Aeq,15minute}	L _{Amax}
NM1	27/02/2024 22:30	4.3	83	D	Yes	40	50	IA	IA	Nil	Nil
NM2	27/02/2024 23:38	4.2	72	D	Yes	44	50	IA	IA	Nil	Nil
NM3	27/02/2024 23:21	3.8	65	D	Yes	40	50	IA	IA	Nil	Nil
NM4	27/02/2024 23:00	4.3	72	D	Yes	40	50	IA	IA	Nil	Nil
NM5	27/02/2024 22:00	3.1	80	D	Yes	40	50	IA	IA	Nil	Nil
NM6	28/02/2024 00:04	3.7	66	D	Yes	40	50	IA	IA	Nil	Nil

Notes: 1. Noise limits are adjusted by +5 dB during 'very enhancing meteorological conditions' in accordance with the NPfI.

2. Site-only LAeq,15minute, includes modifying factor penalties if applicable.

3. Degrees magnetic north, "-" indicates calm conditions.

Table 3 – March Noise Monitoring

Location	Start date and Time	Wind		Stability class	Very enhancing? ¹	Limits, dB ¹		Site levels, dB ²		Exceedances, dB	
		Speed m/s	Direction ³			L _{Aeq,15minute}	L _{Amax}	L _{Aeq,15minute}	L _{Amax}	L _{Aeq,15minute}	L _{Amax}
NM1	18/03/2024 22:30	2.3	99	E	No	40	50	IA	IA	Nil	Nil
NM2	18/03/2024 23:30	0.6	324	F	No	44	50	<20	25	Nil	Nil
NM3	19/03/2024 00:22	1.0	180	F	No	40	50	<20	<25	Nil	Nil
NM4	18/03/2024 23:00	2.0	86	F	No	40	50	IA	IA	Nil	Nil
NM5	18/03/2024 22:00	3.0	91	D	No	40	50	IA	IA	Nil	Nil
NM6	18/03/2024 23:55	1.2	15	F	No	40	50	IA	IA	Nil	Nil

Notes: 1. Noise limits are adjusted by +5 dB during 'very enhancing meteorological conditions' in accordance with the NPfl.
2. Site-only L_{Aeq,15minute}, includes modifying factor penalties if applicable.
3. Degrees magnetic north, "-" indicates calm conditions.

Wind Direction during Attended Monitoring

Wind direction data is collected from the Maule's Creek Coal Mine (MCCM) Automated Weather Station (AWS). Wind data for the duration of the attended monitoring assessment, recorded at the MCCM AWS is presented in the table below.

Table 4 - Prevailing Wind Direction

Monitoring Date	Prevailing Wind Direction
January	ESE
February	SE
March	ESE

Blast Monitoring

There was 30 blasts at MCCM during Q1 2023. All blast monitoring results recorded within the reporting period have complied with applicable overpressure and ground vibration limits specified in the respective approvals.

Table 5 – Blast Results Summary

Parameter	Units	Frequency	Number	Average	Max	100% Limit	Exceedance (Yes / No)
Noise	dB	All	30	94.52	112.7	120	No
Vibration	mm/s		30	0.10	0.37	10	No

Air Quality

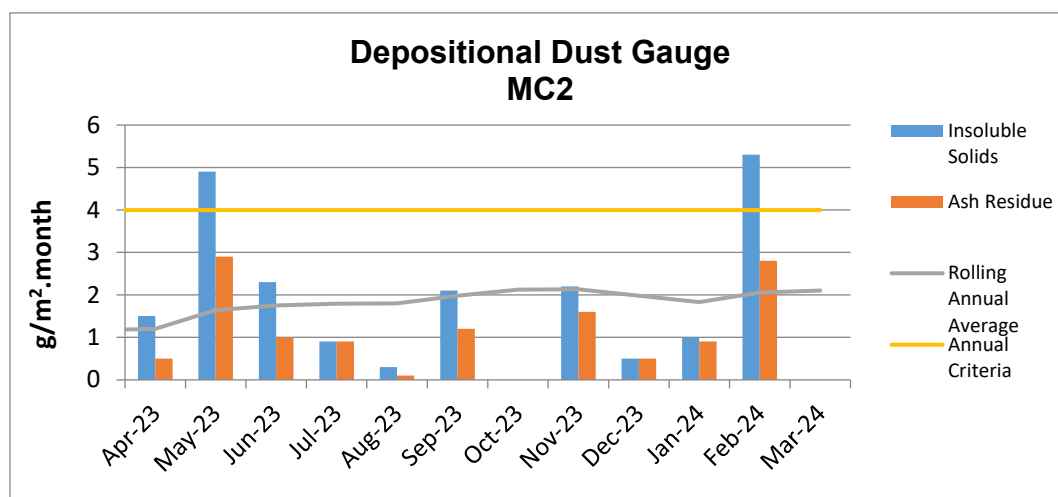
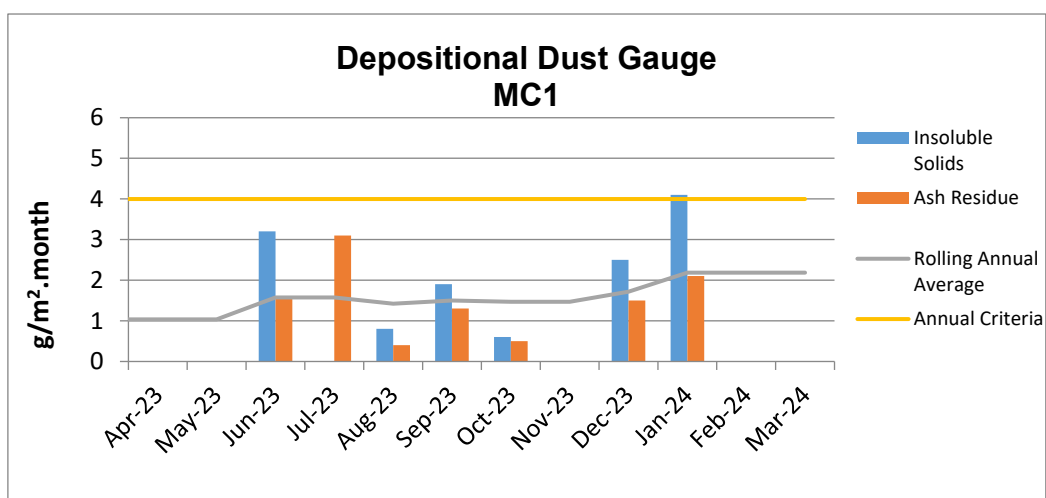
A. Total Depositional Dust

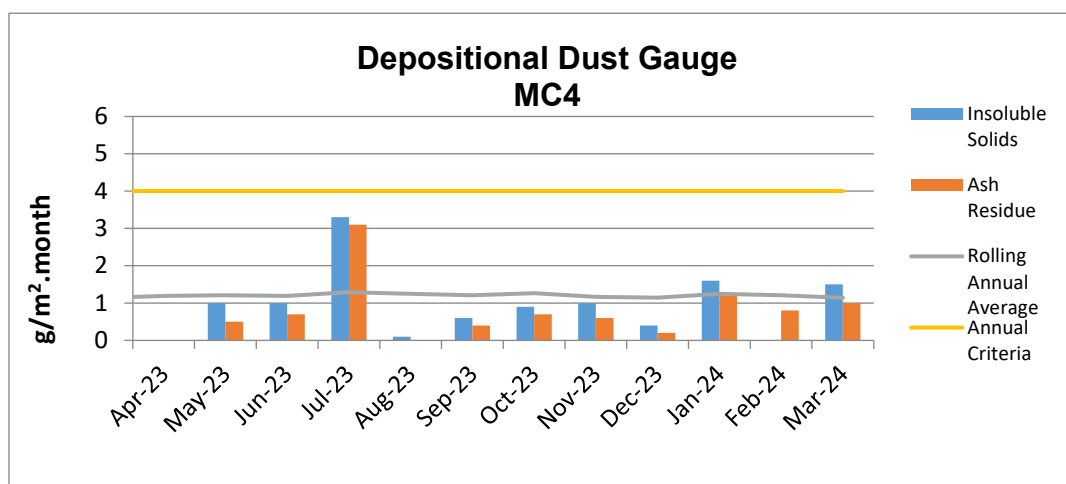
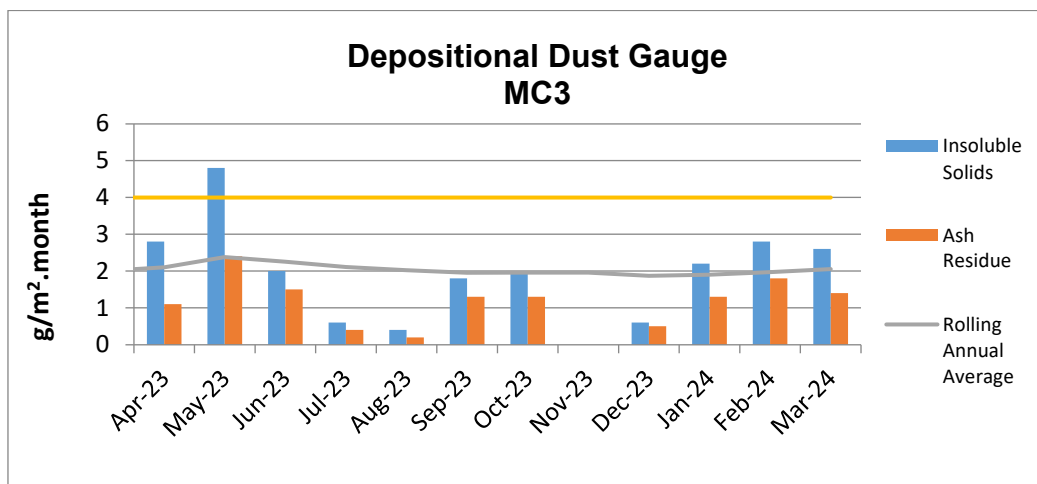
The 12 monthly rolling annual average remains below the relevant Project Approval (PA 10_0138) criteria of 4g/m²/month for the respective monitoring points.

Table 6 – Deposited Dust Gauge Results [g/m²/month]

MONTH	MC1	MC2	MC3	MC4
January	4.1	1.0	2.2	1.6
February	7.5c	5.3	2.8	3.7c
March	31.9c	9.1c	2.6	1.5
12 MONTH ROLLING AVERAGE	2.2	2.1	2.1	1.1

^c samples contaminated by bird dropping, decomposed insects or vegetable matter.



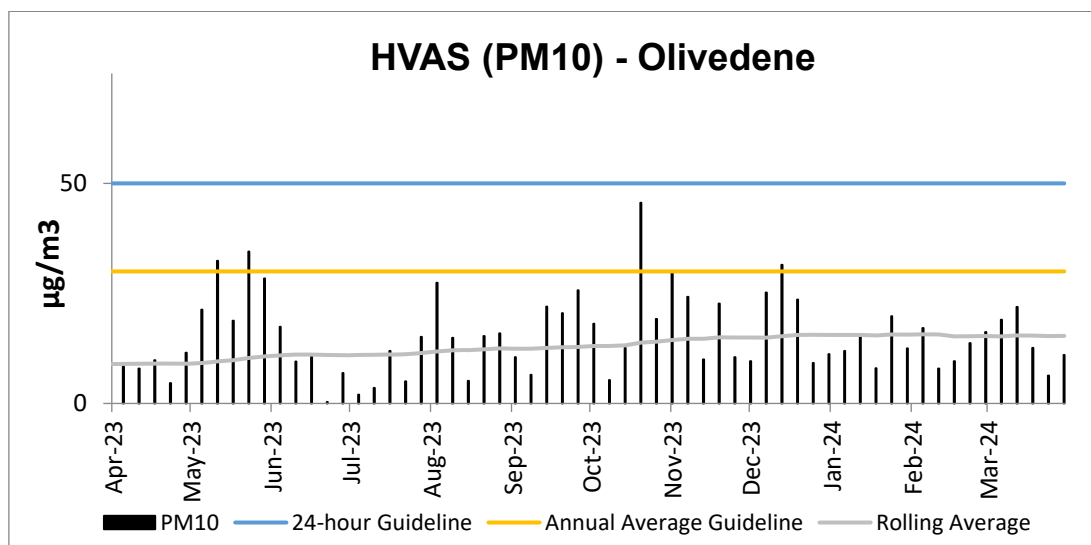


* Blank cells indicate sample periods where the sample has been contaminated and excluded from the results tables due to contaminated material (insect larvae, bird droppings, vegetation etc.).

B. High Volume Air Sampling (HVAS)

The HVAS monitor is located on the property 'Olivedene,' a mine owned property on Therribri Road. During past 12 months, there have been no exceedances of the 24-hour average of 50 $\mu\text{g}/\text{m}^3$.

HVAS PM₁₀ Rolling Annual Average as of March was **15.3 $\mu\text{g}/\text{m}^3$** , which is below the Annual Average Guideline of 30 $\mu\text{g}/\text{m}^3$.



C. TEOM - PM10 Results

The annual rolling average for PM10 at the Maules Creek Coal TEOM1 was **6.9 $\mu\text{g}/\text{m}^3$** , which is below the Project Approval annual average criteria of **30 $\mu\text{g}/\text{m}^3$** as shown in the following figure. There have been no exceedances of the 24-hour average for Q1 2023.

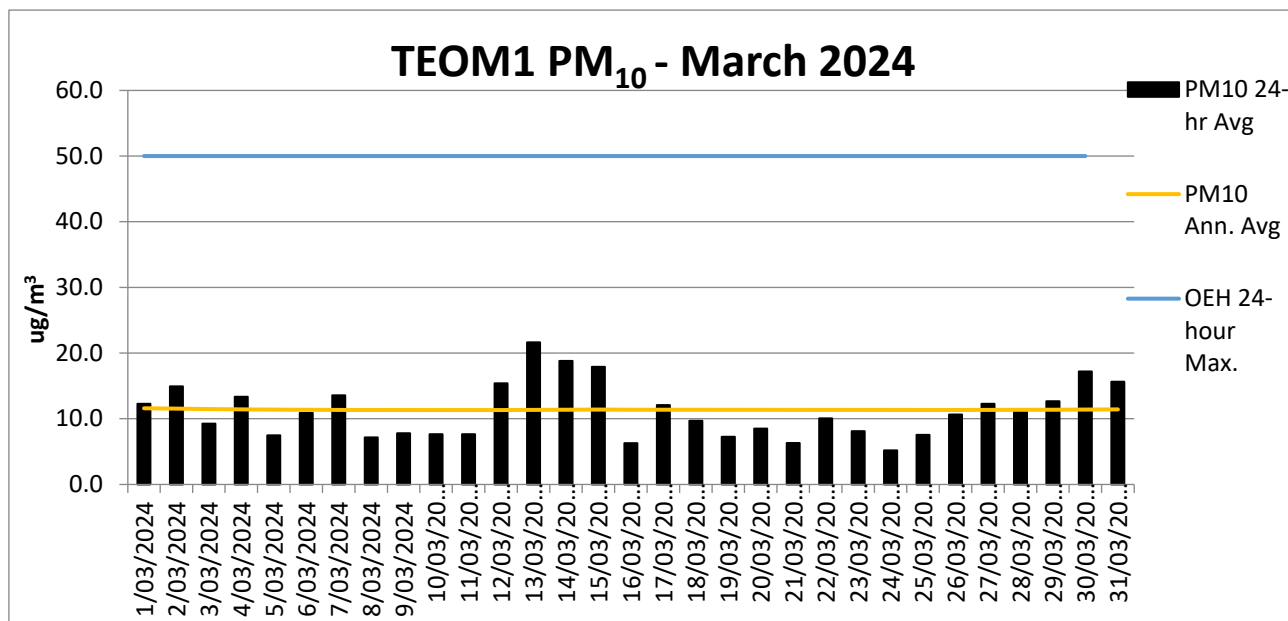


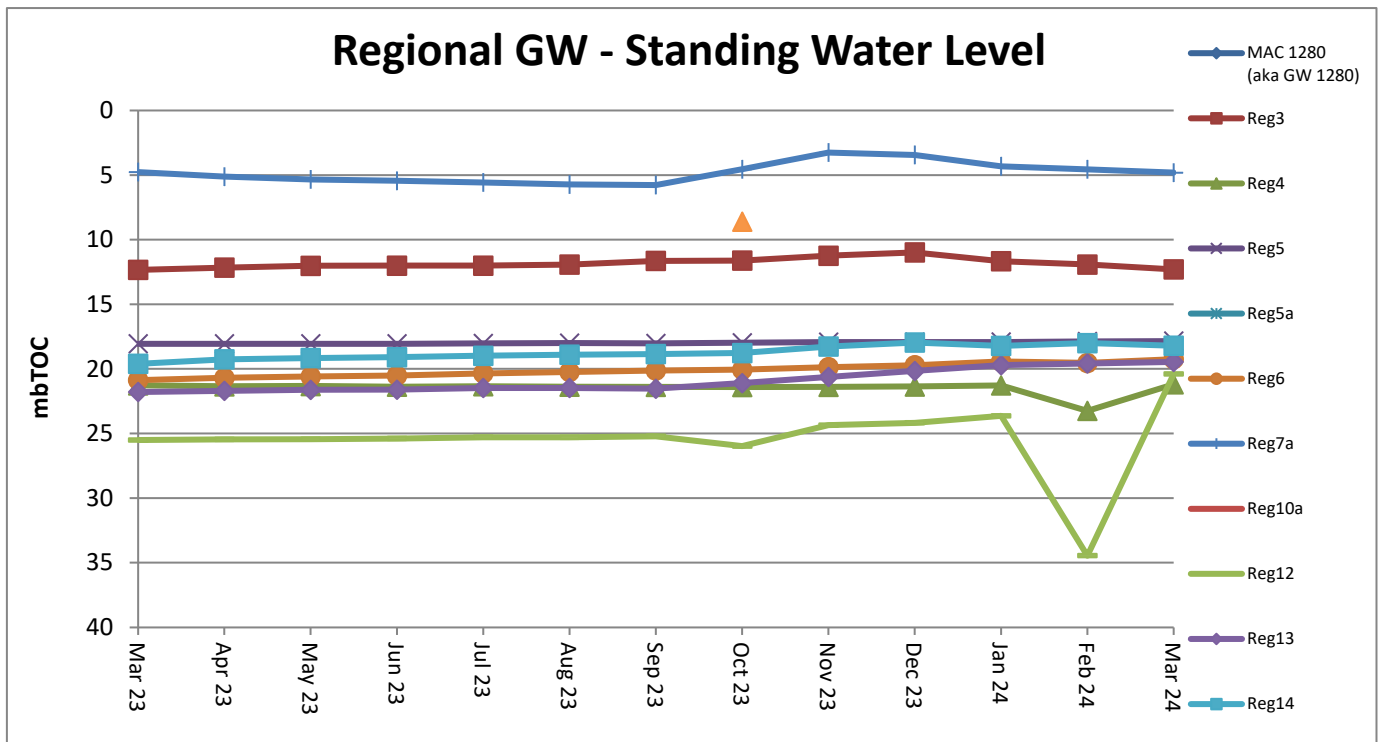
Figure 1 - TEOM Result – Particulate Matter $\text{PM}_{10\mu\text{g}/\text{m}^3}$

* Blank columns indicate sample periods where there was either power outage, maintenance or other related causes.

Water Monitoring

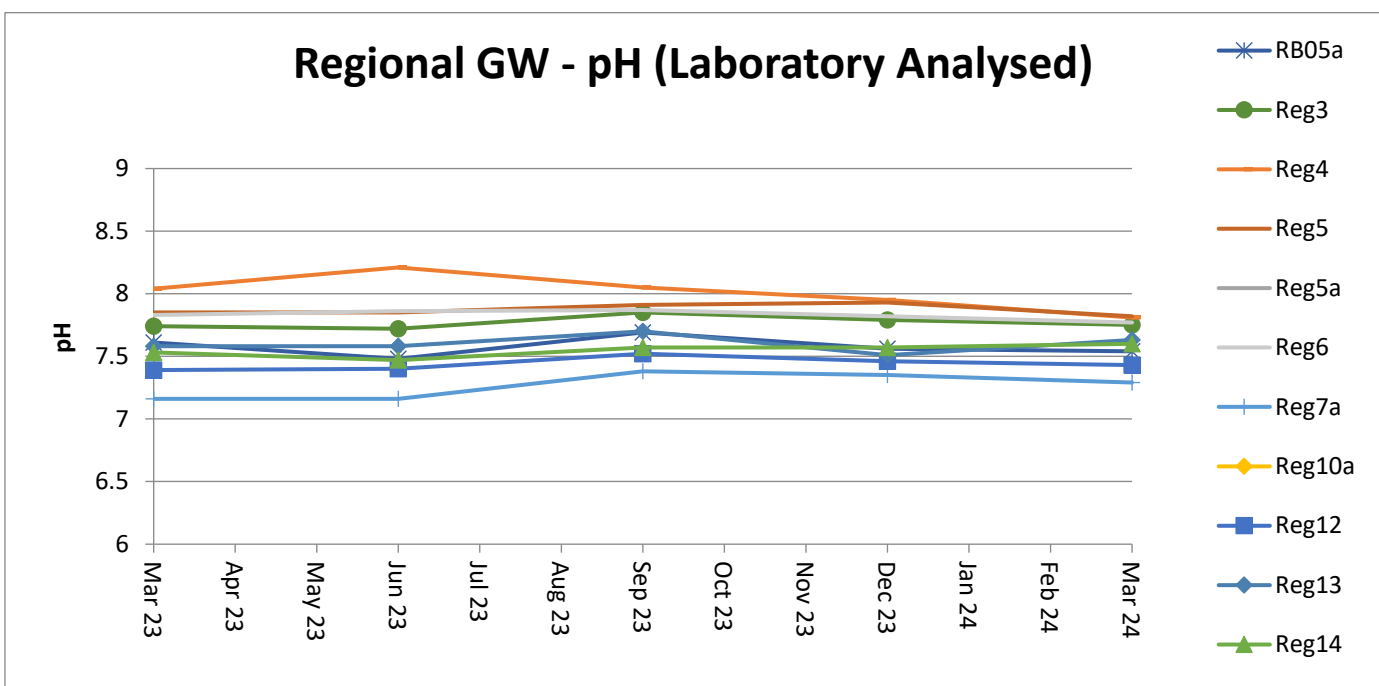
A. Groundwater

Groundwater monitoring results in open standpipe piezometers show levels to be relatively stable. The Regional bores were installed between Q4, 2013 and Q1, 2014. BCM01, BCM03, Reg10 are shallow bores which have remained dry since construction in 2013.



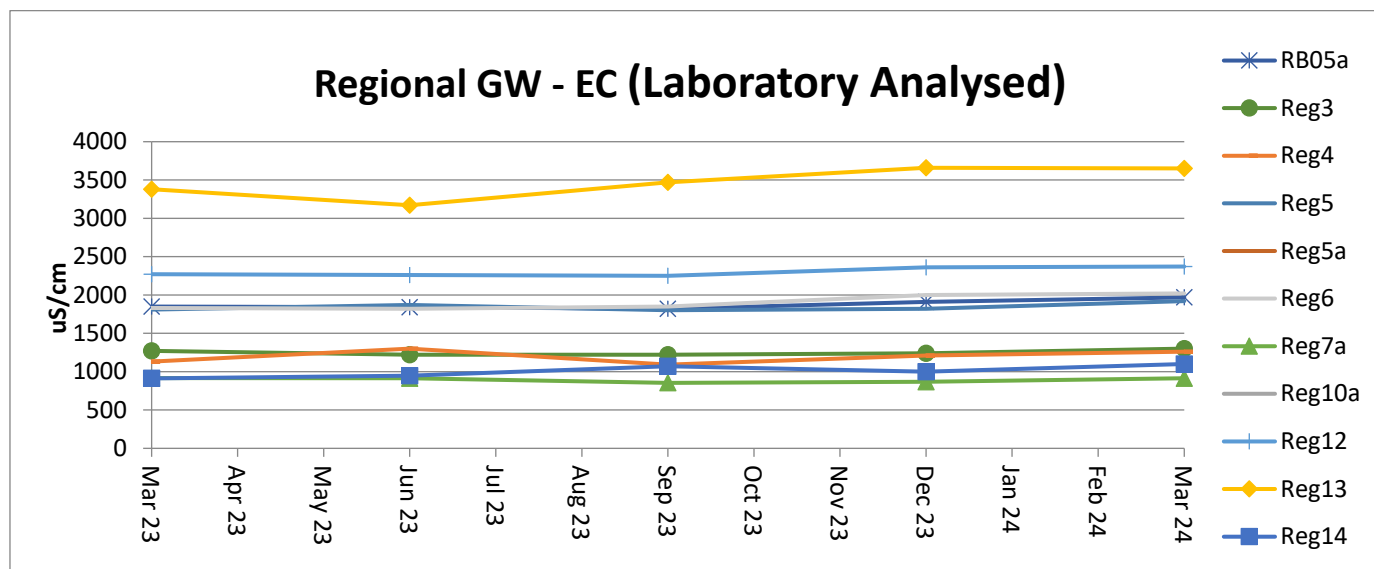
Acidity / Alkalinity (pH)

Over the past twelve months pH readings across the regional bores have remained static with very little fluctuation.



Electrical Conductivity

Laboratory Electrical Conductivity (EC) levels are all within historic groundwater EC range of 500 $\mu\text{S}/\text{cm}$ to 2,500 $\mu\text{S}/\text{cm}$, with the exception of monitoring bore Reg13 which has a historic groundwater EC range of 2,500 $\mu\text{S}/\text{cm}$ to 4,100 $\mu\text{S}/\text{cm}$. Within the last twelve months EC has remained static.

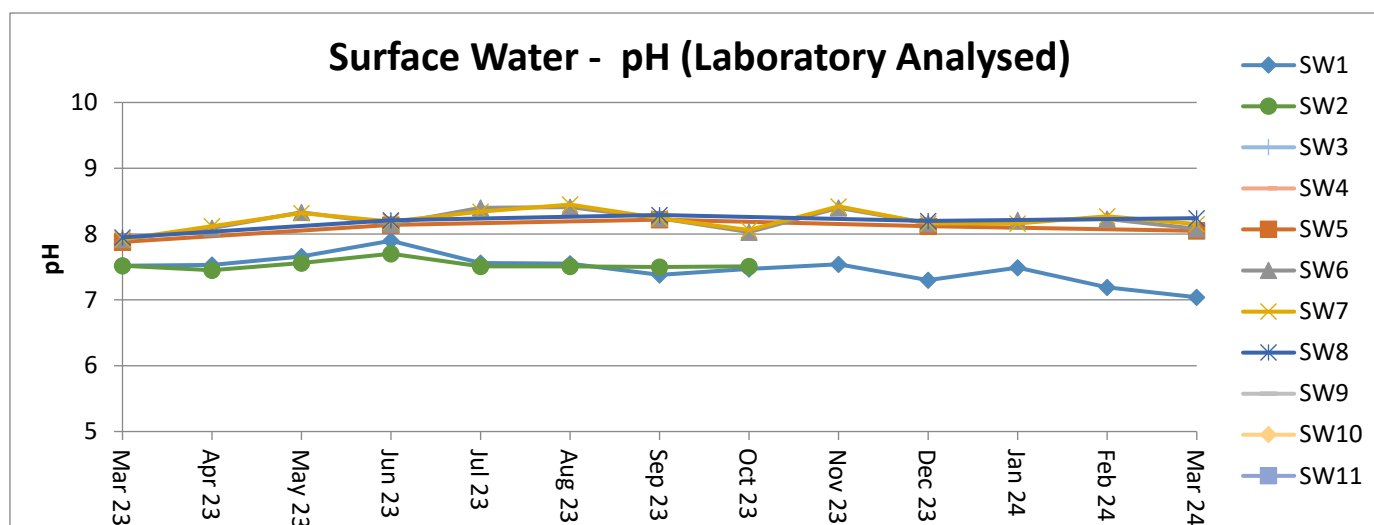


B. Surface Water – Creeks and Rivers

Routine surface water monitoring is conducted in surrounding creeks and rivers on a monthly basis. Results for parameters including pH, EC and Total Suspended Solids (TSS) are shown in the figures below.

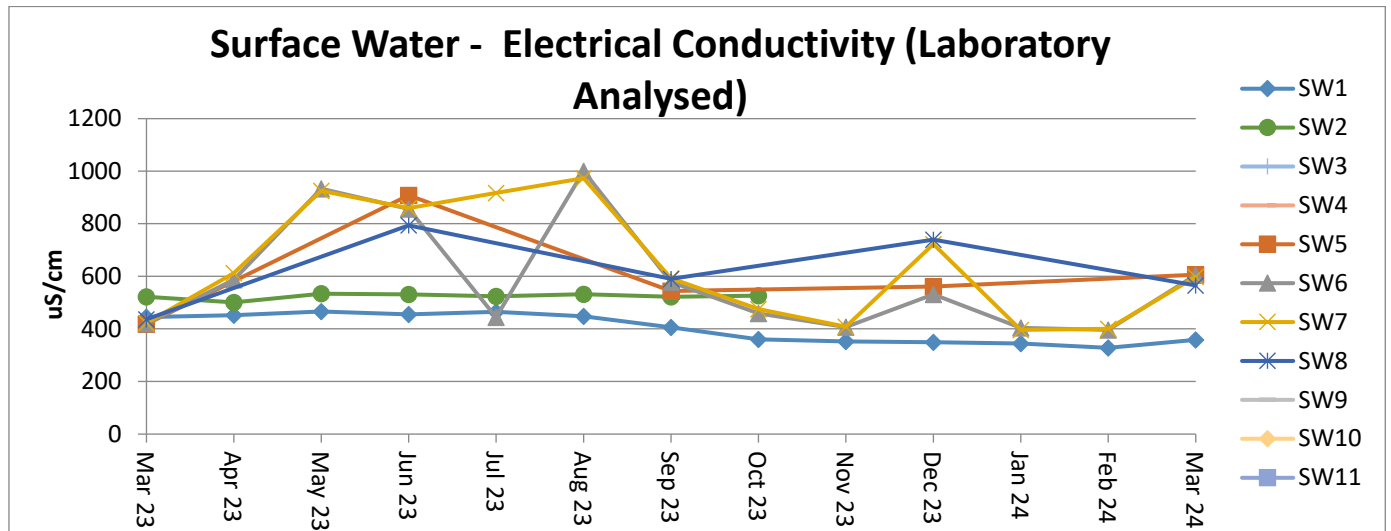
Acidity / Alkalinity (pH)

Monitoring results for pH in creeks and rivers surrounding MCCM are all trending within the ANZECC range for Irrigation, Ecosystem Health and Recreation.



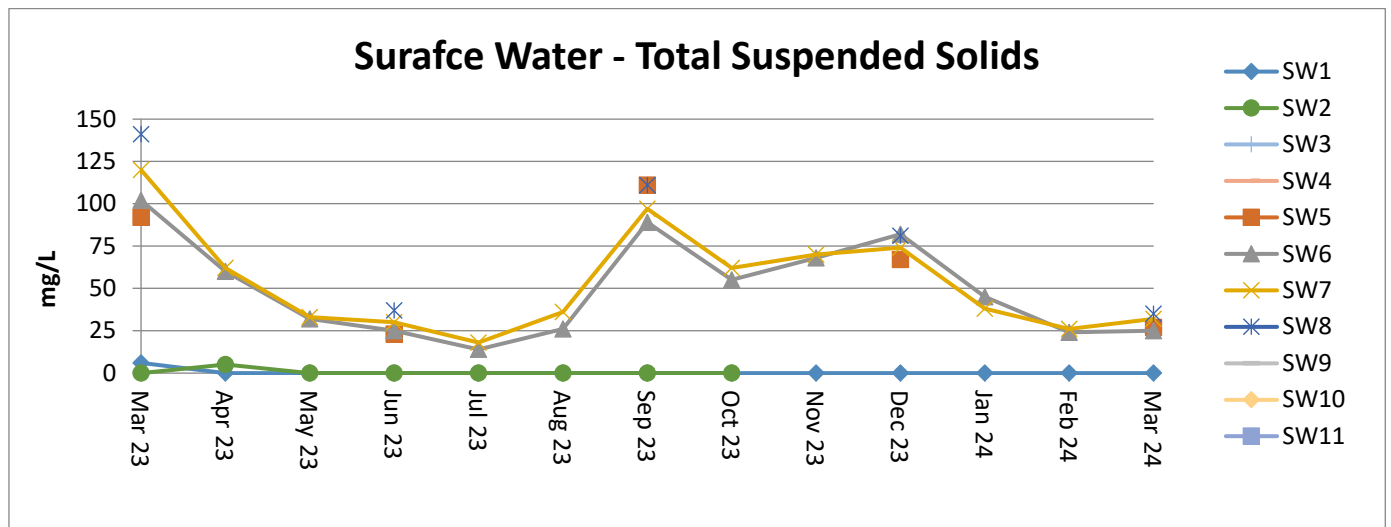
Electrical Conductivity

Surface water EC trends have remained consistent with SW5, SW6, SW7 and SW8 all historically variable. SW5, SW6, SW7 and SW8 are points along the Namoi River which are subject to regulated and variable flow regimes.



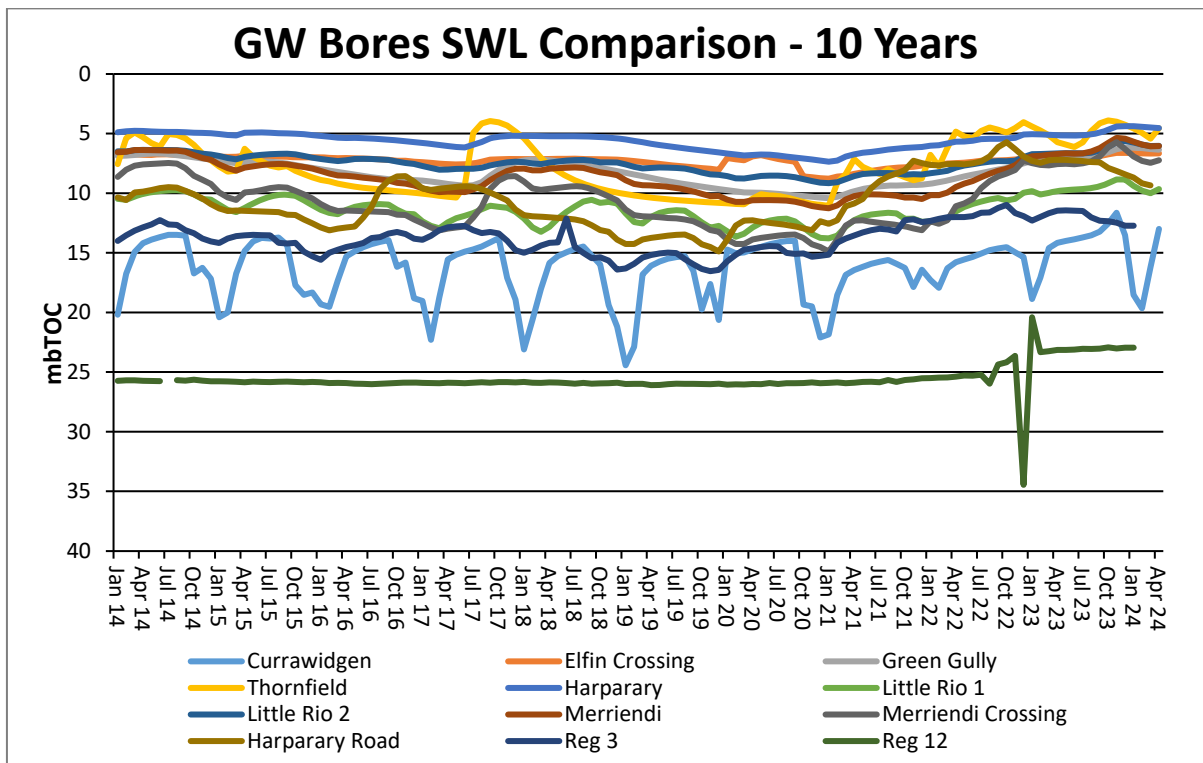
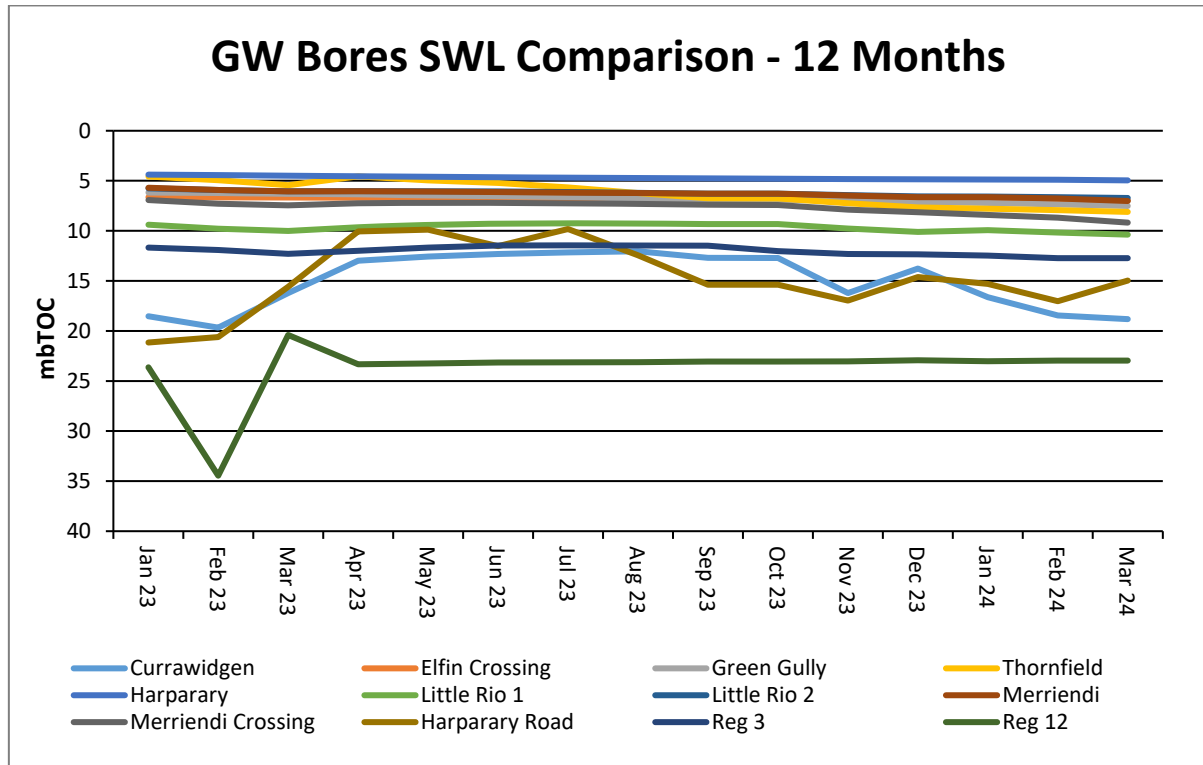
Total Suspended Solids (TSS)

Surface water TSS trends have remained generally consistent with historical results. SW5, SW6, SW7 and SW8 are historically variable as they are located along the Namoi River which is subject to regulated and variable flow regimes.



Regional Groundwater monitoring

Maules Creek Coal Mine monitors regional bores across the region.



Rehabilitation

Progressive rehabilitation works are ongoing. MCC is on track to complete CY24 rehabilitation in accordance with the Forward Plan.

Feral Animal Management

Most recent routine Whitehaven Biodiversity Feral Animal Control program (January to March 2024) results were:

- 1,336 out of total 2,189 pigs trapped or baited were from the Maules Biodiversity properties; and,
- All 20 of the Goats harvested were from the Maules Biodiversity properties; and,
- 128 out of total 447 Canid Pest Ejectors (1080) consumed were from the Maules Biodiversity properties

MCC conducted Feral Animal Control program during February – March 2023.

Weed Control

During January to March 2024 the following weed control was undertaken via spot spraying/jetting on the Maules Biodiversity Properties:

44ha of Broadleaf weeds such as General Broadleaf, marshmallow, St John's Wort, Cobblers Peg, General Thistles and Cockspur were sprayed.

191ha of Grasses such as African Lovegrass, Buffel Grass, Rhodes Grass and Coolatai Grass were sprayed.

96ha of Woody Weeds such as Box Thorn, Prickly Pear, Sweet Briar, Tiger Pear, Velvet Pear and Blackberry has been sprayed.

251ha of tracks sprayed as part of the track maintenance.

Community Complaints

No complaints were received during the quarter.

Maules Creek Coal Mine

CCC MEETING
Q1 2024

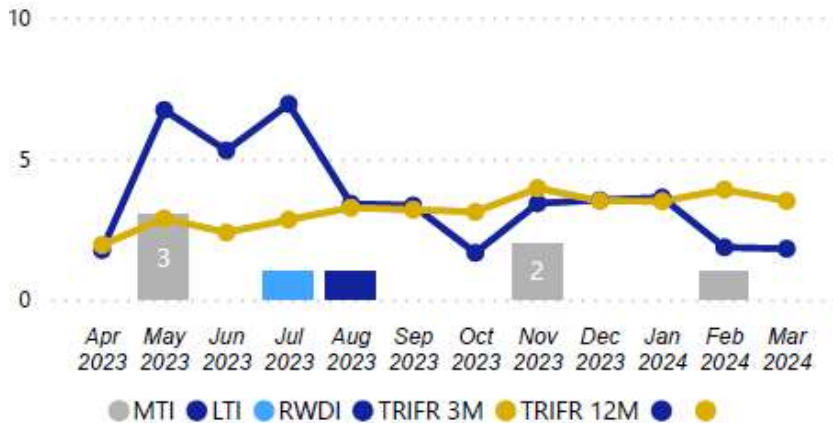
Maules Creek Coal Mine
May 2024



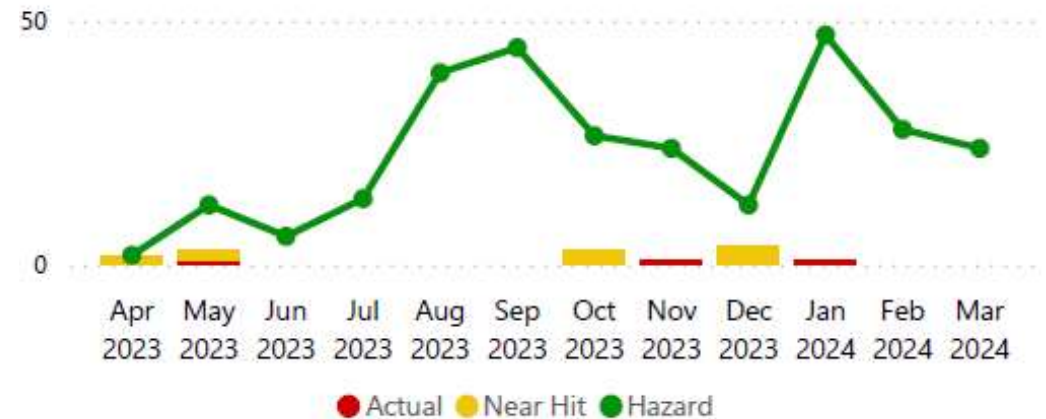
MCC Health and Safety Performance

- TRIFR 3.51
- PL4+ Hazards = 117 Q1 FY
- Critical controls verified 100%

Recordable Injuries & TRIFR



Significant Incidents



Environmental Monitoring

All data is summarised for quarter 1
in detail in the Monitoring Report
supplied

Maules Creek Coal Mine
May 2024



WHITEHAVEN COAL

Environmental Monitoring

Q1 2024 - Air Quality Monitoring

Maules Creek Coal Mine
May 2024



WHITEHAVEN COAL

Depositional Dust

The annual reporting period (12 monthly rolling annual average) remained below the relevant Project Approval (PA 10_0138) criteria of 4g/m²/month for the respective monitoring points.

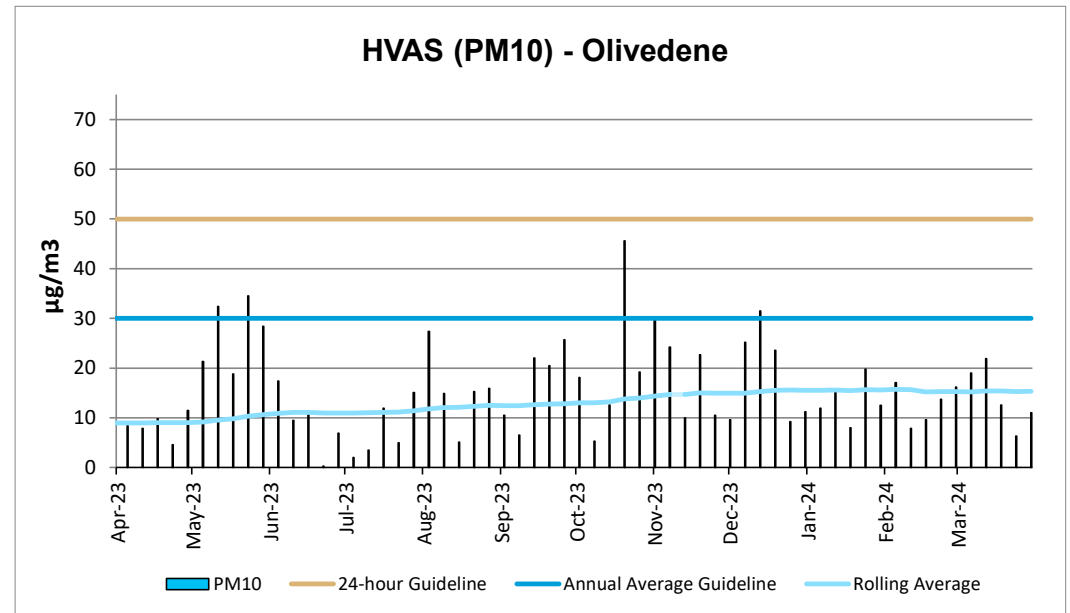
MONTH	MC1	MC2	MC3	MC4
January	4.1	1.0	2.2	1.6
February	7.5c	5.3	2.8	3.7c
March	31.9c	9.1c	2.6	1.5
12 MONTH ROLLING AVERAGE	2.2	2.1	2.1	1.1

^c samples contaminated by bird dropping, decomposed insects or vegetable matter.

HVAS

High Volume Air Sampler

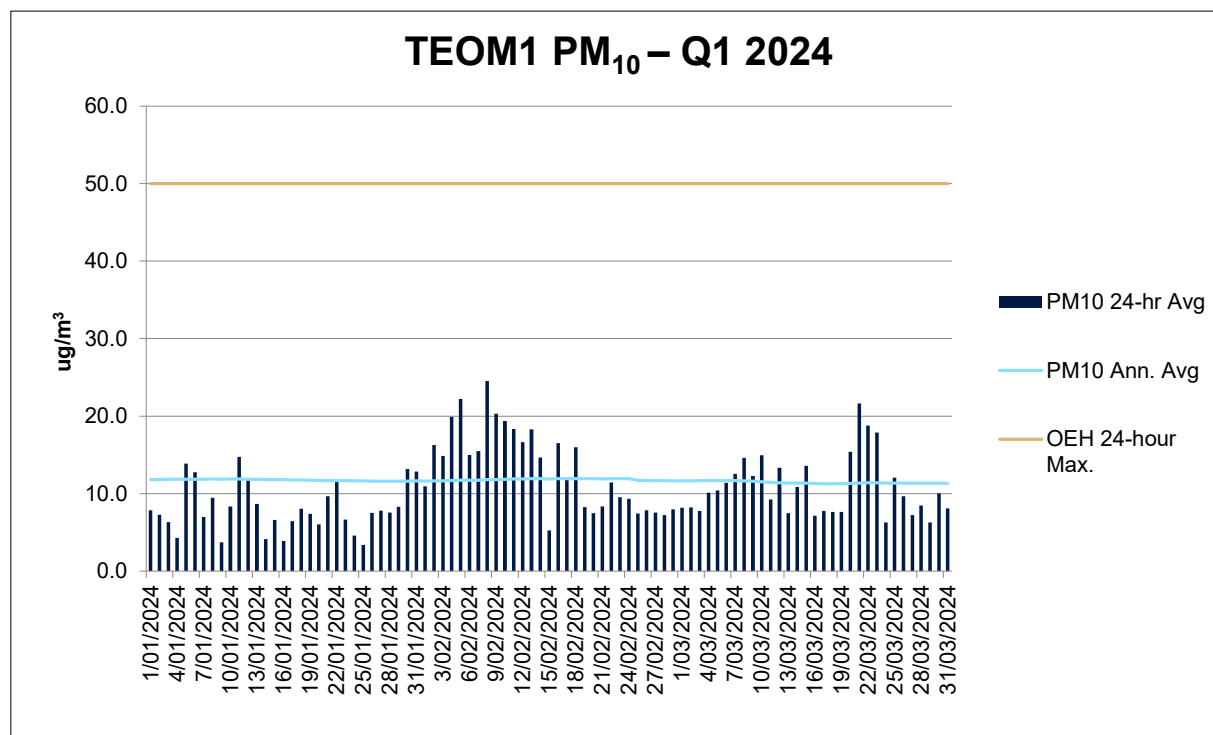
- The HVAS monitor is located on 'Olivedene'
- Data is publically available
- No exceedances recorded during the 24 hour average of $50 \mu\text{g}/\text{m}^3$
- The Rolling Annual Average was recorded at **$15.3 \mu\text{g}/\text{m}^3$** , which is below the Annual Average Guideline of $30 \mu\text{g}/\text{m}^3$.



TEOM (PM10)

Tapered element oscillating microbalance

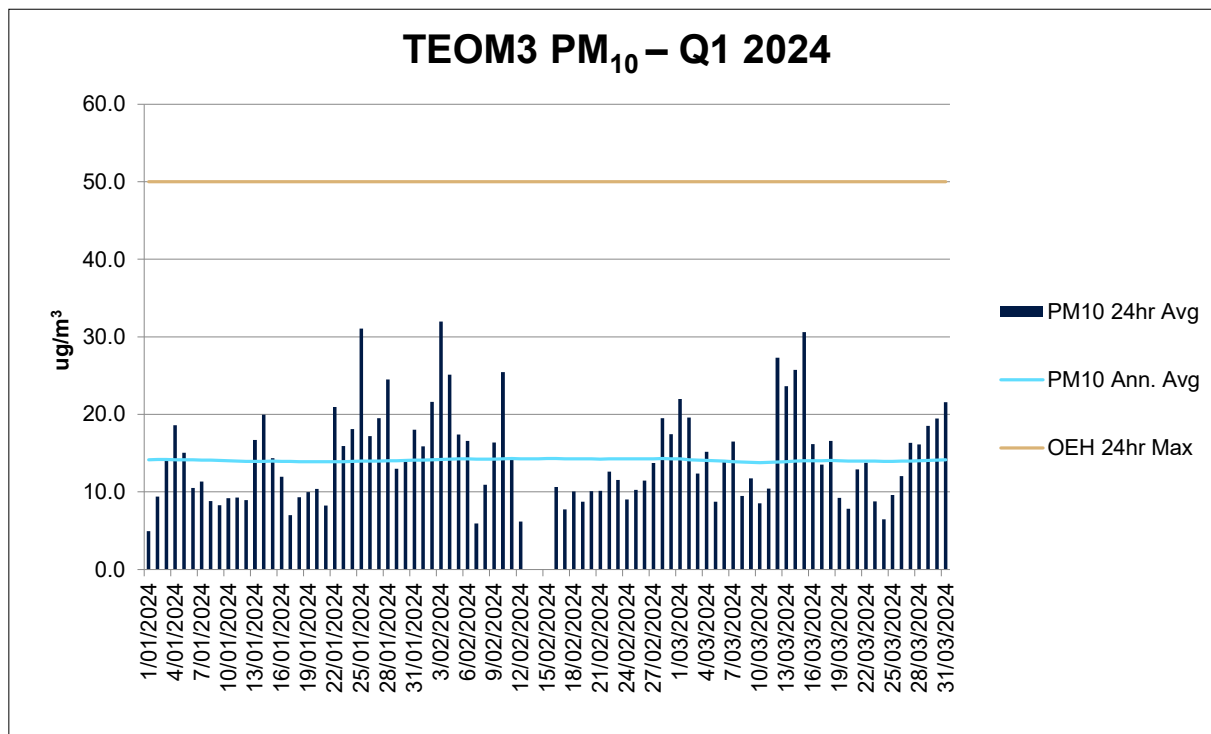
- Publicly available results of TEOM1 available on the EPA website.
- Annual rolling average for TEOM 1 is 11.4 $\mu\text{g}/\text{m}^3$ at 31 March 2024 (criteria 30 $\mu\text{g}/\text{m}^3$).



TEOM (PM10)

Tapered element oscillating microbalance

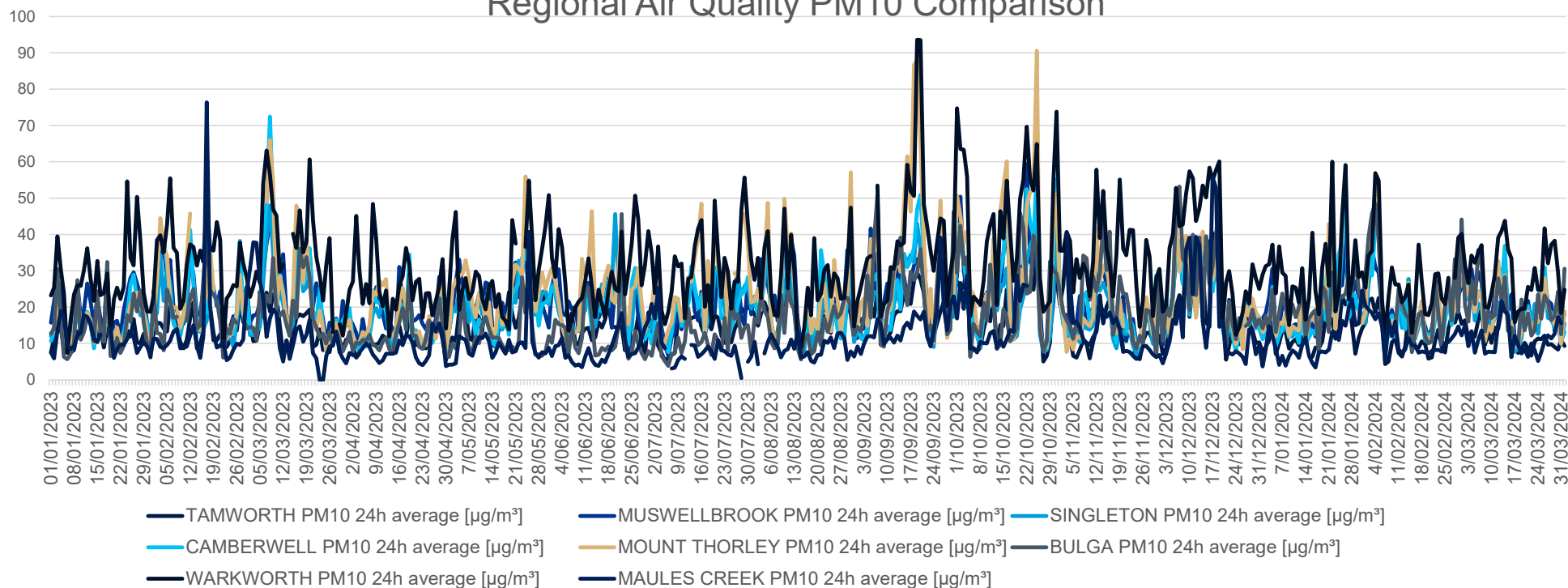
- Annual rolling average for TEOM 3 is 14.1 $\mu\text{g}/\text{m}^3$ at 31 March 2024 (criteria 30 $\mu\text{g}/\text{m}^3$).



Air Quality Monitoring Rolling 12 Months

Annual Reporting Data 1 January 2023 – 31 March 2024

Regional Air Quality PM10 Comparison



12 monthly	TAMWORTH PM10	MUSWELLBROOK PM10	SINGLETON PM10	CAMBERWELL PM10	MOUNT THORLEY PM10	BULGA PM10	WARKWORTH PM10	MAULES CREEK PM10
Annual Average	14.8	21.8	18.9	20.7	23.7	16.9	32.0	11.5
Max 24hr Ave	40.4	59.4	48.0	72.5	90.6	53.2	93.6	76.4

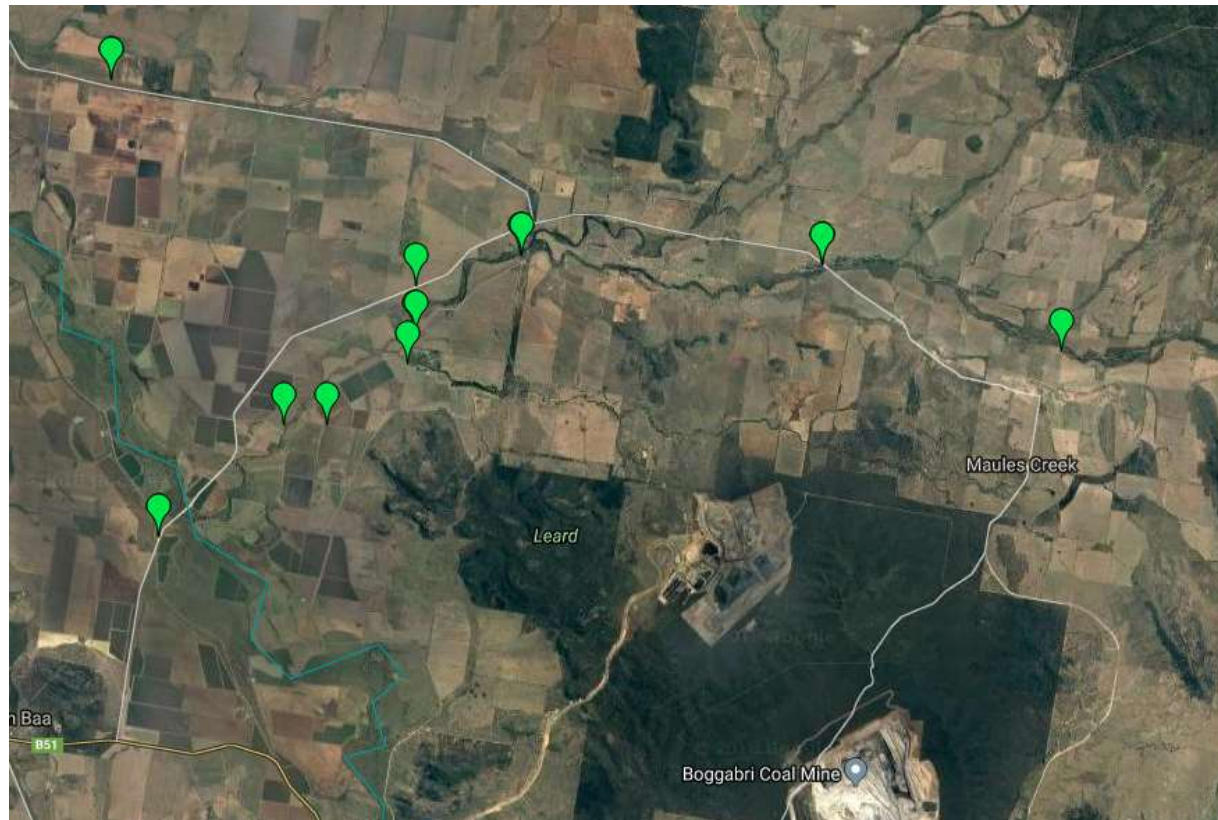
Environmental Monitoring

Q1 2024 - Groundwater

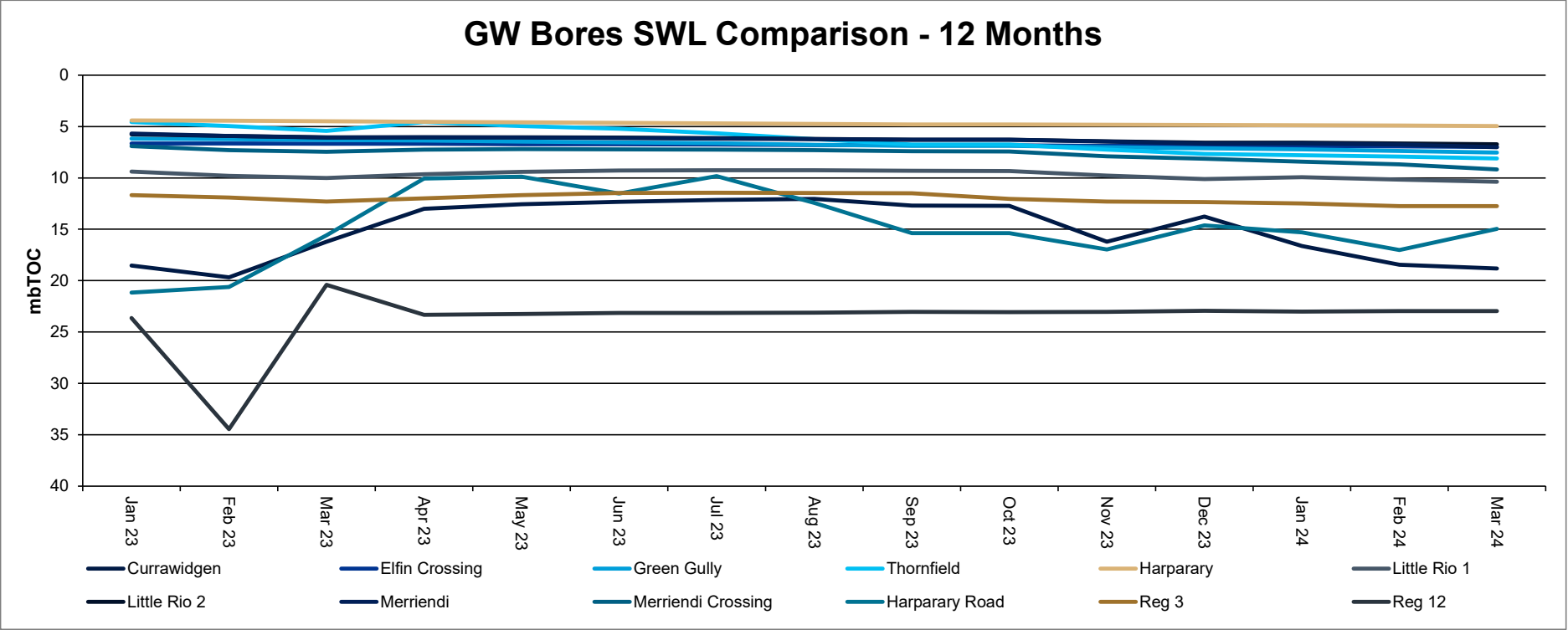
Maules Creek Coal Mine
May 2024



Monitoring Locations



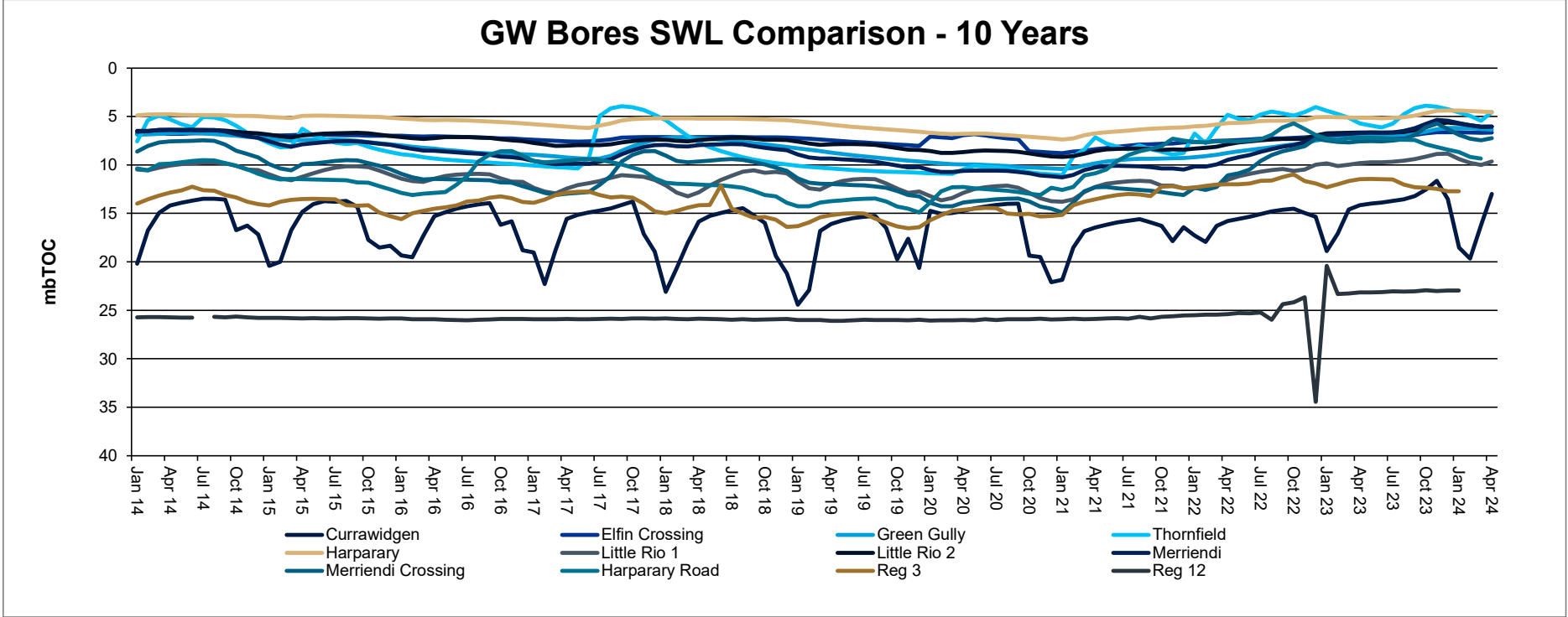
Groundwater Levels



* Note Reg12 and Reg3 both within Boggabri Volcanics

Source: NSW DPI- Water & MCCM monitoring data

Groundwater Levels

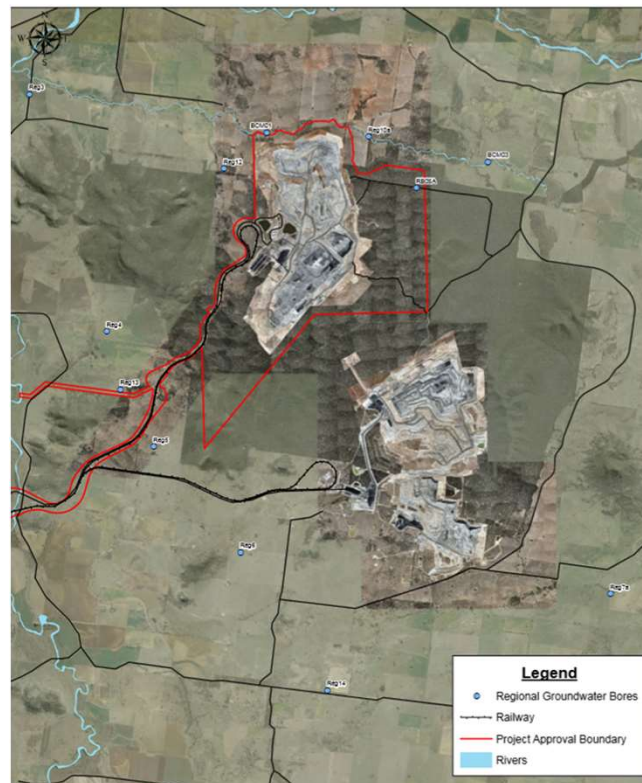


Source: NSW DPI- Water & MCCM monitoring data

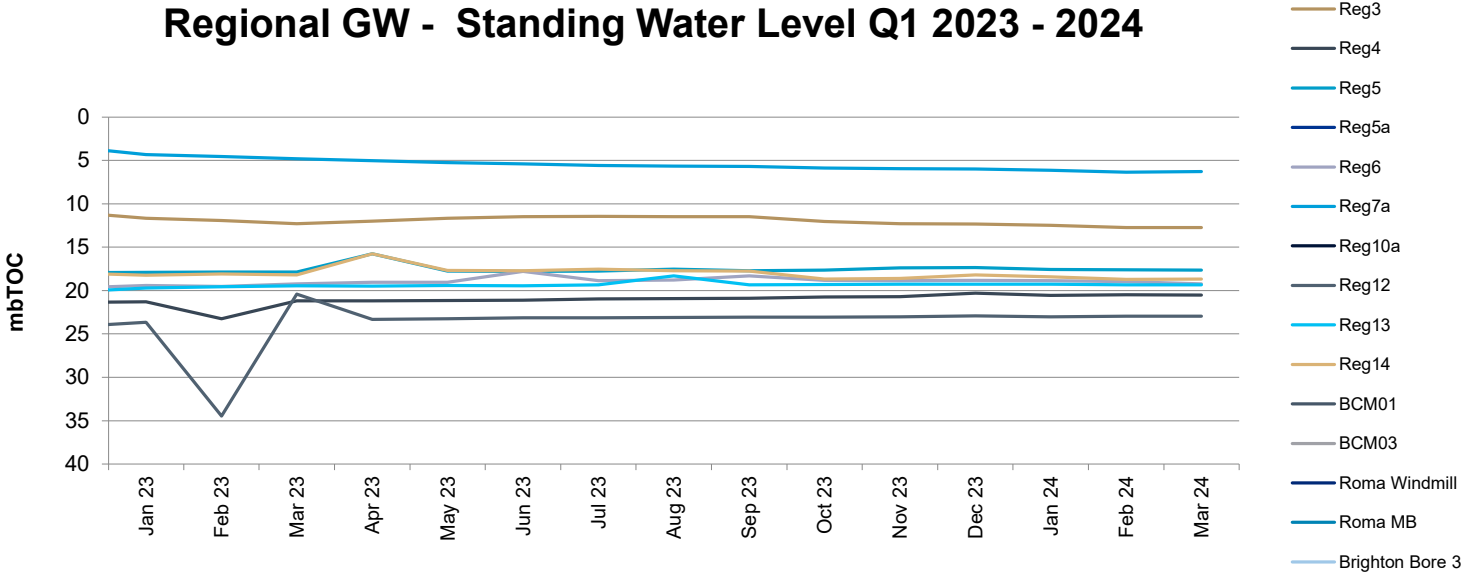
* Note Reg12 and Reg3 both within Boggabri Volcanics

Standing Water Levels

Regional Groundwater Bores



Standing Water Levels



Tyre Disposal 2024

- 400 tyres were disposed of in Q1
- All tyres were disposed of in accordance with EPL 20221

O4 Waste management

O4.1 The licensee is authorised to dispose of heavy plant tyre waste generated on the premises, in the waste rock/overburden emplacements.

The licensee must:

- a) ensure that heavy plant waste tyres are re-used on the premises as much as practical;
- b) ensure that any surplus heavy plant waste tyres can be emplaced by being spread out within the waste rock/overburden emplacements and buried as deep as practical, but, covered by at least 20 metres of inert material beneath any final rehabilitated surface;
- c) place heavy plant waste tyres at least 15 metres away from coarse reject material or tailings emplacement areas;
- d) not emplace any heavy plant waste tyres directly on the pit floor, or in a location that is likely to impede or contaminate saturated aquifers;
- e) not emplace any heavy plant waste tyres in a position that compromises the stability of the final rehabilitated landform;
- f) not place any heavy plant waste tyres within 15 metres of heated or potentially acid forming materials;
- g) not place any heavy plant waste tyres in an area likely to leach to any watercourse; and
- h) record the co-ordinates (easting, northing and elevation) of each disposal location.

Environmental Monitoring

Q1 2024 - Biodiversity

Maules Creek Coal Mine
May 2024



Biodiversity Management

Feral Animal Management

Most recent routine Whitehaven Biodiversity Feral Animal Control program (January to March 2024) results were:

- 1,336 out of total 2,189 pigs trapped or baited were from the Maules Biodiversity properties; and,
- All 20 of the Goats harvested were from the Maules Biodiversity properties; and,
- 128 out of total 447 Canid Pest Ejectors (1080) consumed were from the Maules Biodiversity properties.

Weed Control

During January to March 2024 the following weed control was undertaken via spot spraying/jetting on the Maules Biodiversity Properties:

44ha of Broadleaf weeds such as General Broadleaf, Marshmallow, St Johns Wort, Cobblers Peg, General Thistles and Cockspur were sprayed.

191ha of Grasses such as African Lovegrass, Buffel Grass, Rhodes Grass and Coolatai Grass were sprayed.

96ha of Woody Weeds such as Box Thorn, Prickly Pear, Sweet Briar, Tiger Pear, Velvet Pear and Blackberry has were sprayed.

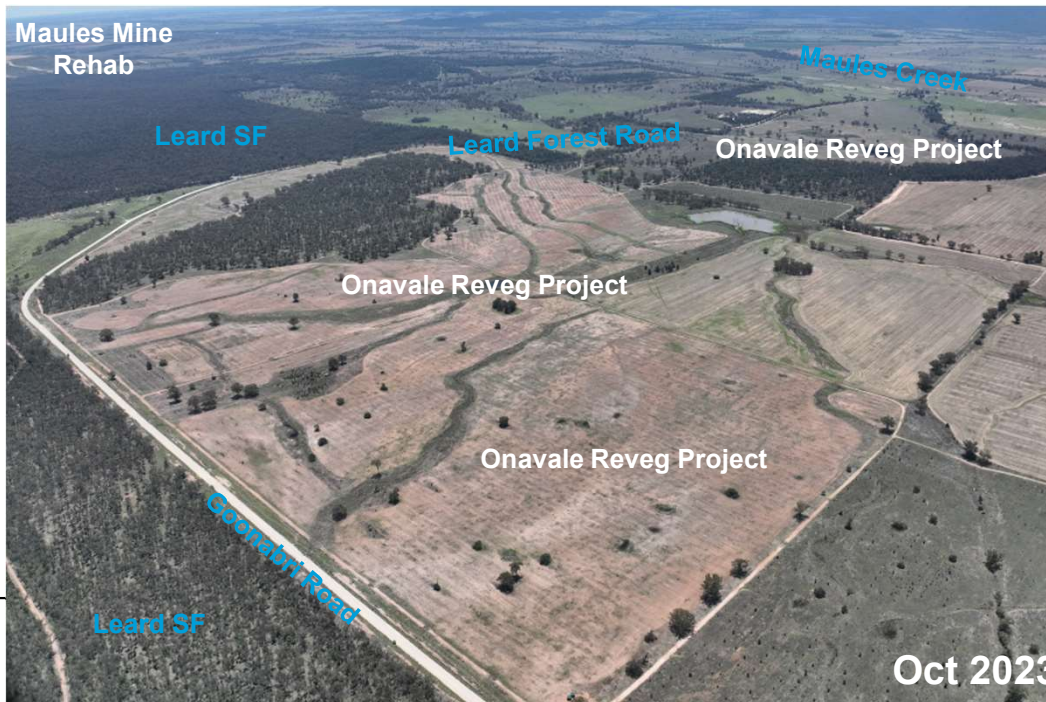
251ha of tracks sprayed as part of the track maintenance.



Biodiversity Management

Update on Onavale Reveg Project

Good survival and growth achieved up to end of March 2024 with maintenance watering and weed spraying undertaken since seeding and planting was completed in October 2023. A total of 331ha was revegetated with ~26,000 trees and 960kg of native species to a native Box/Ironbark Woodland that will enhance and promote connectivity between the eastern Leard SF and Nandewar Range.



Biodiversity Management

Annual Fauna Monitoring – Microbat Surveys

The 2024 Microbat Surveys were conducted over 6 weeks across Maules biodiversity properties.

Baseline surveys were conducted on Additional Offsets on Coonoor, Neranghi North, Long Gully, Triangle and Thornfield with near optimum conditions resulting in high capture rates and good species diversity achieved from specialised bat equipment called harp traps (lower middle and lower right photos).

Upcoming Biodiversity Projects and Works

Commence 2024 Revegetation Preparation and Tree Planting.

Continued Pest Animal Management Program April to June 2024.

Continued Seasonal Weed Control Programs.

Commence Annual Habitat Augmentation Monitoring & Installation.

Commence Ecological Thinning Assessment.

Continue Fire Break Track Maintenance Program.

Continue 2024 Ecological Burn Program.



MCC CCC Meeting Approvals Update

Maules Creek Coal Mine
May 2024



WHITEHAVEN COAL

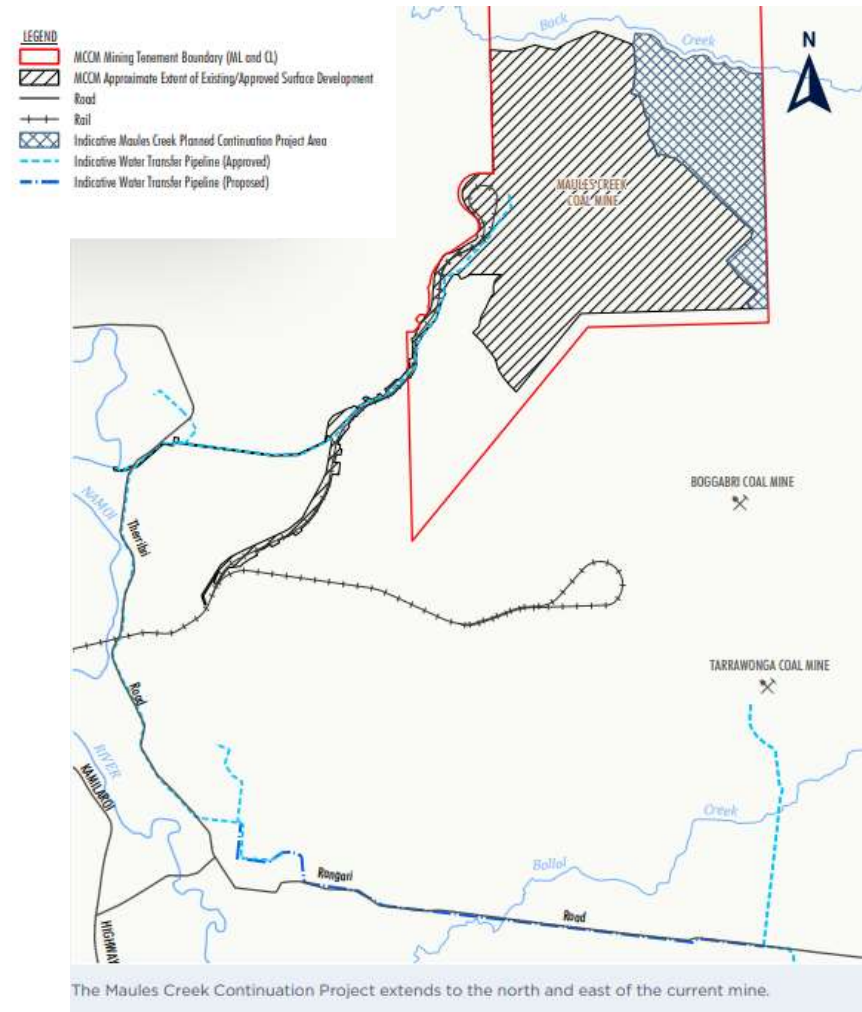
Approvals

Continuation Project EIS

- Environmental studies/modelling and community consultation ongoing.
- EPBC referral scheduled for Q4 FY24
- EIS lodgment scheduled for Q2 FY25

Modification 9 – BOS and ETL

- Determined 20th March 2024
- Approval documentation available on DPHI major projects website <https://www.planningportal.nsw.gov.au/major-projects>



Community

Maules Creek Coal Mine
May 2024



Community Investments

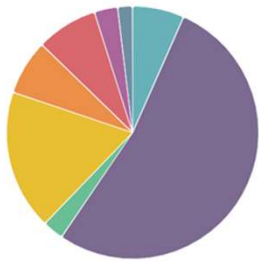
Whitehaven continues to support the local Community with donations and sponsorships.

More information on Sponsorships and Donations can be found at:

<https://whitehavencoal.com.au/sustainability/community/donations-sponsorships/>

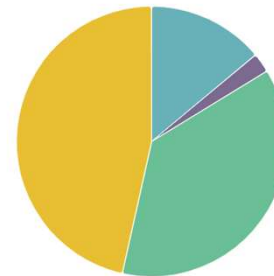
Donations/ Sponsorship January 2024 – March 2024 **\$183,960** spent in the local community.

Highlights: Black & Blue Gym, Gunnedah Show, Wean Jockey Club, Tamworth Rotary First Light, Gunnedah Bulldogs, 2024 Variety Bash NSW, Westpac Helicopter Charity Golf Day, Create 2024.



Location

- Boggabri, NSW, AU City
- Gunnedah, NSW, AU City
- Manilla, NSW, AU City
- Narrabri, NSW, AU City
- Quirindi, NSW, AU City
- Tamworth, NSW, AU City
- Wean, NSW, AU City
- Werris Creek, NSW, AU City



Area of Investment

- Education
- Health
- Regional sport
- Whole of community

Thank you

Maules Creek Coal Mine
May 2024

