

Notes: Notes of the Meeting of the Maules Creek Coal Community Consultative Committee
Held at Boggabri Golf Club at 1.00 pm.

Wednesday 14th February 2024

Members Present: Elizabeth O’Hara (EOH) – Community Representative, Libby Laird (LL) – Community Representative (via video), Robyn Grover (RG) – Community Representative, Steve Eather (SE) – Community Representative, Landon Brady (LB) – Narrabri Shire Council (Alternate), Darren Swain (DS) – WHC, Emma Bulkeley (EB) - WHC, Clr Brett Dickinson – (BD) Narrabri Shire Council

Apologies: Cr Michelle Henry – Narrabri Shire Council

Guest: Daniel Holm (DH) - Social Impact Assessment Consultant

Independent Chair: David Ross (DR)

Independent Secretary: Rhonda Smith (RS)

Agenda Items	Who to Present
1. Welcome and Apologies	DR
2. Declaration of pecuniary or other interests	DR
3. Confirmation of the Minutes of the previous meeting – Wednesday 25 October 2023	DR
4. Business arising from the previous minutes	DR
5. Company Overview	DS
6. Mine’s Environmental Performance	EB, DS
7. General Business	ALL
8. Next Meeting – Wednesday 15th May 2024	ALL

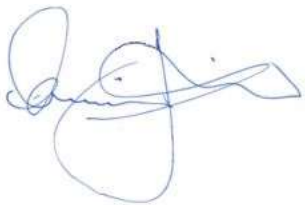
Agenda Item	Discussion	Action/By Whom
1.	Welcome and Apologies – DR welcomed everyone to the first meeting of the year.	
2.	Declaration of Pecuniary or Other Interests – DR is paid a fee as chair as is RS for typing the minutes. EOH has a small bundle of WHC shares. RG has a family member working at Maules Creek.	
3.	Confirmation of the Minutes of the Previous Meeting – Members were comfortable with the minutes from the previous meeting.	
4.	<p>Business Arising from the Previous Minutes</p> <p>EOH – Stated that she is not comfortable being labelled as the CCC’s Environmental Representative, as had been suggested following conclusion of the previous MCC CCC meeting. EOH stated that it would be completely inappropriate for her to allow this suggestion to stand. She advised that she has no qualifications for this position and has never claimed to possess them. She suggested that the role of Environmental Representative has very specific requirements.</p> <p>DR – Accepts her concerns and stated that efforts could be made to locate a new environmental representative. However, over the years, it has been very difficult to find anyone with the appropriate skills. Also informed members that efforts are being made to seek an Aboriginal Representative.</p> <p>DS distributed a Briefing Note to members, responding to actions from the last meeting (see attached).</p>	
5.	<p>Social Impact Assessment Presentation</p> <p>DR asked members if they were comfortable with adapting the standard agenda so that DH could present early in the meeting; members agreed.</p> <p>DH introduced himself and then commenced talking about the social impact assessment (SIA) that MCCM is undertaking as part of its environmental impact assessment associated with the proposed continuity project.</p> <p>DH spoke to his presentation (see attached). He observed that social impacts are the consequences people experience when a new project brings change and that potential impacts can be both good and bad. He assured participants that all responses were treated as being confidential.</p> <p>The SIA process aims to answer three questions:</p> <ul style="list-style-type: none"> • What are the social impacts associated with a project? 	

	<ul style="list-style-type: none"> • How might those impacts be experienced, and by whom? • What can be done to mitigate negative and enhance positive impacts? <p>DH then described how he evaluates potential social impacts, consultation undertaken to date with the community regarding the proposed continuity project. He then shared with members the feedback received from the community to date, which he had grouped into nine categories should the project proceed and six categories should the project <i>not</i> proceed.</p> <p>EOH – Observed that big business and government are working together on issues like this and the community feels it has poor representation.</p> <p>DH then wanted to hear from members if anything had been missed in his assessment to date. What was important to members and landholders? DR then broke members into groups to discuss the following questions from DH:</p> <ul style="list-style-type: none"> • Do the impacts make sense to you? • Is there anything that is not included? • Which of these issues are most important to you and the broader community. • Who do you think would be impacted by the project? <p>Members then proceeded to discuss these questions before providing DH with their answers. DH thanked everyone and informed members that he would like to come back to provide an update at a future meeting.</p>	
6.	<p>Company Overview and Mine’s Environmental Performance</p> <p>Due to a lengthy technology-related delay to the meeting, DR asked members if, rather than going through the presentations for the above topics during the meeting, they could please review the presentation in their own time. Members accepted this.</p>	
7.	<p>General Business</p> <p>EOH – Put to the meeting 3 questions sent through by LL who was unable to be re-admitted to the zoom meeting</p> <p>1. Why did WHC only take water samples from people’s bores instead of measuring water levels when it did the baseline survey reading last month on Harparary Road?</p> <p>EB – We took all samples where access was available - capped and equipped bores prevented access in some places. We took water samples and measured water levels.</p> <p>2. What value is a water sample when people are worried about losing their water entirely?</p> <p>DR- taken as a comment.</p>	

	<p>3. Why has it taken so long to get the baseline survey undertaken and when will the proponent be updating the groundwater model with the new data and increasing the model boundary to cover the new bores and wells?</p> <p>DS- a new groundwater model will be part of new the Maules Creek Coal Continuation Project assessments.</p> <p>EB – A new groundwater model is to be developed as part of the mine’s continuity project. The existing groundwater model for the mine is to be updated based on current approvals- a three yearly requirement.</p> <p>EOH – observed that the window of clearing of Leard State Forest starts today, which is very sad.</p> <p>EOH- Commented that Whitehaven is currently in court arguing for a permanent stay on the 2020 blast- continuing distress of community – there are other blasting incidents in court.</p> <p>EOH - How many personal injury claims are currently being heard in relation to MCC mine?</p> <p>DS- Will check with MCC legal services. <i>Chair’s note: Subsequent advice from MCC is that this data is not available.</i></p> <p>DR – reminded members that there had been a request for him to invite someone from the Tyre Stewardship organisation to present at the Joint CCC meeting in May. He has briefly spoken to their staff who are happy to be involved.</p>	
8.	<p>Next meeting date</p> <p>Wednesday 15th May 2024 at 1:00 pm. At Boggabri Golf Club</p> <p>DR informed the committee that, after 7.5 years chairing the BTM committees, he had informed the Department of Planning, Infrastructure and Housing that he was resigning. He thanked all members for their time and contribution through the years.</p>	

Meeting Closed: 3.00 pm.

Approved:



Michael J. Silver OAM
Independent Chair

24 June 2024

Appendix 1: Input from CCC Members for Future Meetings (from October 2023)

Description
Invite Social Impact Assessment staff to present.
DR to invite Minerals Council Tyre Stewardship staff to present.
Future site tour options: <ul style="list-style-type: none">• Leard Forest Site Tour and presentation.• Tour of bores with hydrologist
Provision of Bush Fire Management Plans, once revised.
Management of roads and access for fire management
Results of bird surveys
Experts for noise, dust and water to attend if interest is there
When do the water models get updated?

Maules Creek Coal Mine

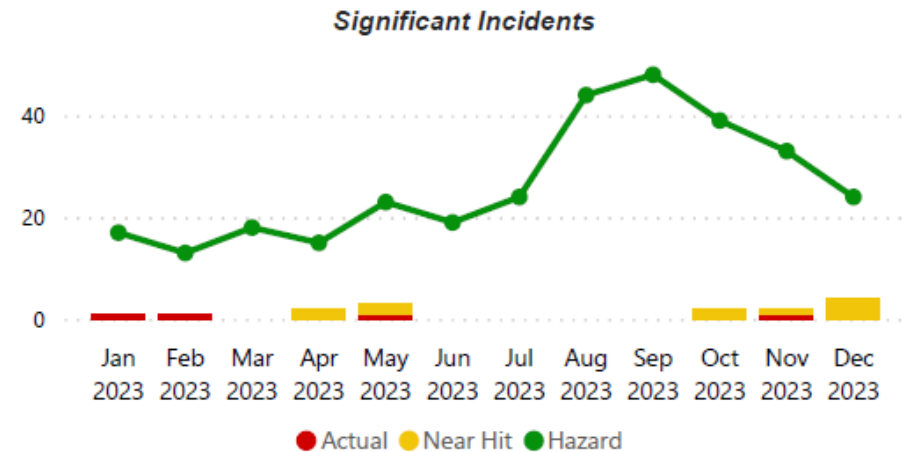
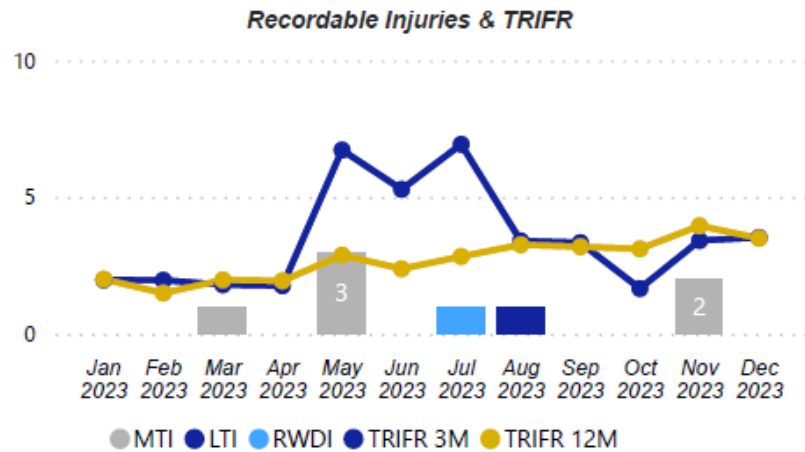
CCC MEETING
Q4 2023

Maules Creek Coal Mine
February 2024



MCC Health and Safety Performance

- Total Record Injury Frequency Rate 3.5
- Potential Level 4+ Hazards = 317 CY 2023
- Critical controls verified 100%



Environmental Monitoring

All data is summarised for quarter 3
in detail in the Monitoring Report
supplied

Maules Creek Coal
October 2023



Environmental Monitoring

Q3 2023 - Air Quality Monitoring

Maules Creek Coal
October 2023



Depositional Dust

The annual reporting period (12 monthly rolling annual average) remained below the relevant Project Approval (PA 10_0138) criteria of 4g/m²/month for the respective monitoring points.

MONTH	MC1	MC2	MC3	MC4
October	0.6	5.3c	2.0	0.9
November	3.8c	2.2	3.8c	1.0
December	2.5	0.5	0.6	0.4
12 MONTH ROLLING AVERAGE	1.7	2.0	2.5	1.1

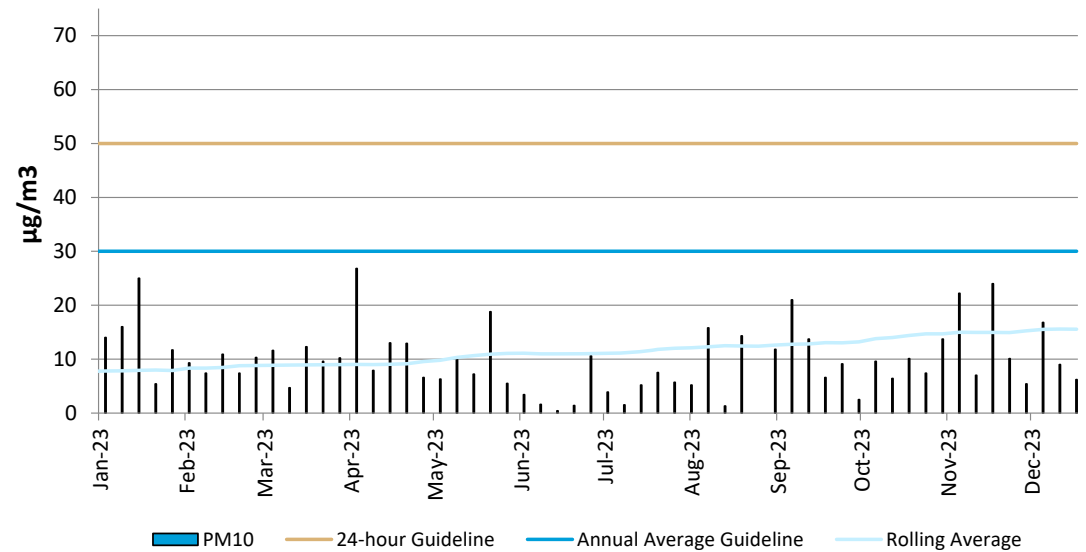
^c samples contaminated by bird dropping, decomposed insects or vegetable matter.

HVAS

High Volume Air Sampler

- The HVAS monitor is located on 'Olivedene'
- Data is publically available
- No exceedances recorded during the 24 hour average of 50 $\mu\text{g}/\text{m}^3$
- The Rolling Annual Average was recorded at **15.6 $\mu\text{g}/\text{m}^3$** , which is below the Annual Average Guideline of 30 $\mu\text{g}/\text{m}^3$.

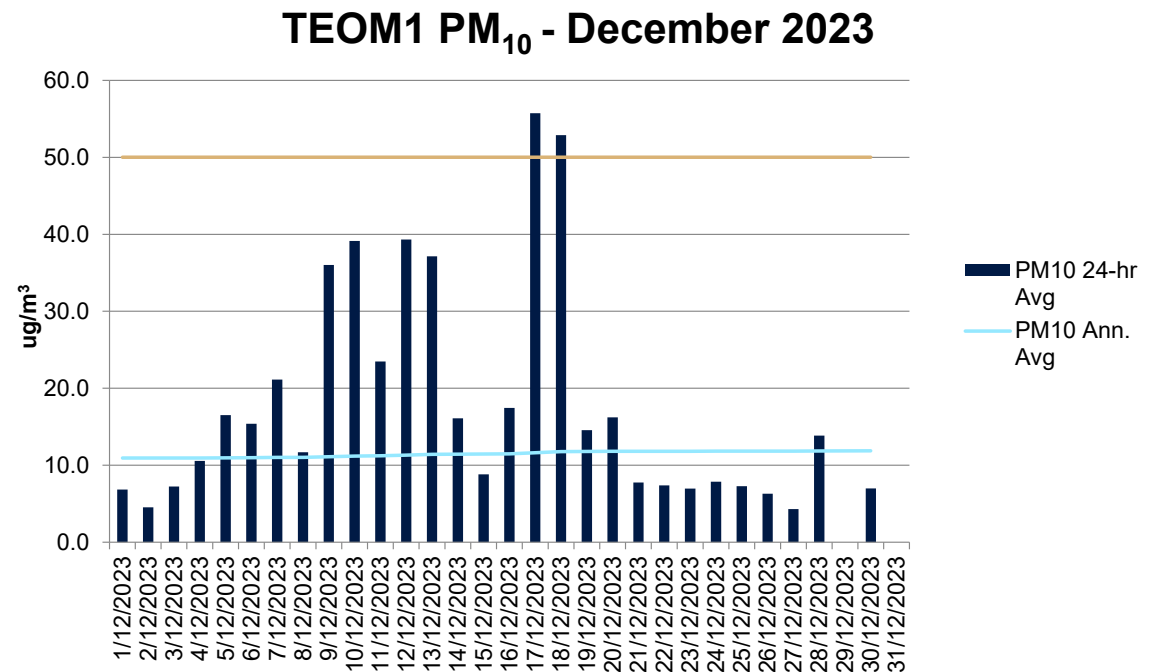
HVAS (PM10) - Olivedene



TEOM (PM10)

Tapered element oscillating microbalance

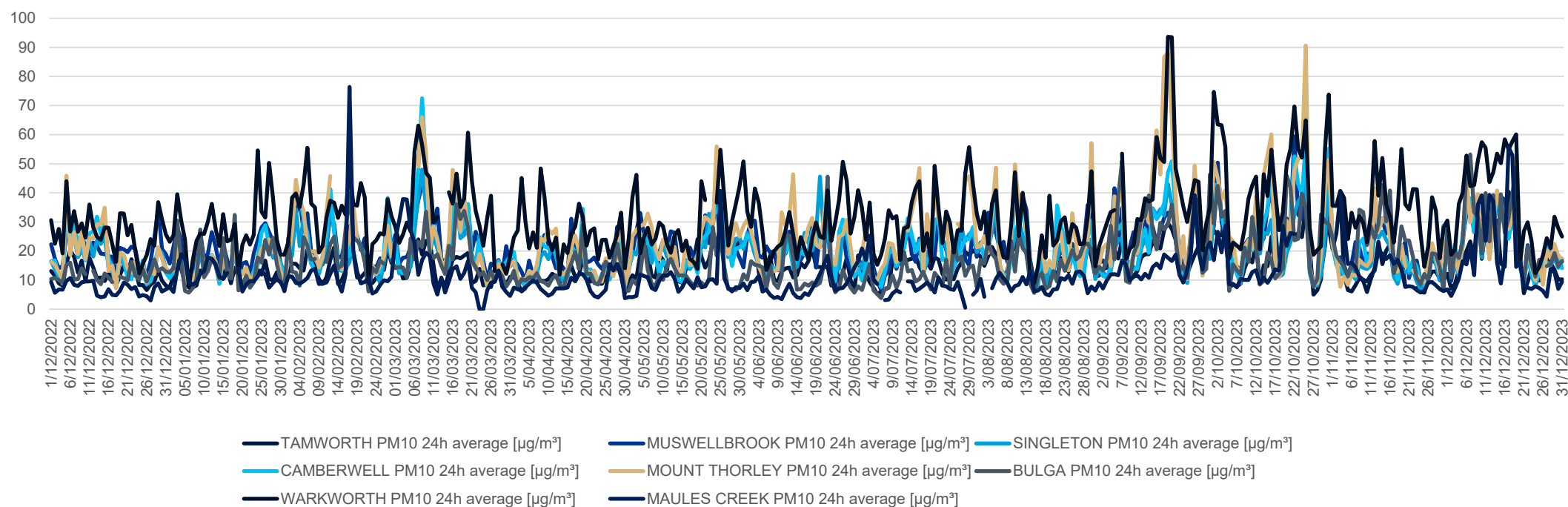
- Publicly available results of TEOM1 available on the EPA website.
- Annual rolling average for TEOM 1 is 11.9 $\mu\text{g}/\text{m}^3$ at 31 December 2023 (criteria 30 $\mu\text{g}/\text{m}^3$).
- Exceedances of the 24hr criteria in December related to the Pilliga Bushfire



Air Quality Monitoring Rolling 12 Months

Annual Reporting Data 1 December 2022 – 31 December 2023

Regional Air Quality PM10 Comparison



12 monthly	TAMWORTH PM10	MUSWELLBROOK PM10	SINGLETON PM10	CAMBERWELL PM10	MOUNT THORLEY PM10	BULGA PM10	WARKWORTH PM10	MAULES CREEK PM10
Annual Average	14.8	21.8	18.9	20.7	23.7	16.9	32.0	11.5
Max 24hr Ave	40.4	59.4	48.0	72.5	90.6	53.2	93.6	76.4

Environmental Monitoring

Q3 2023 - Groundwater

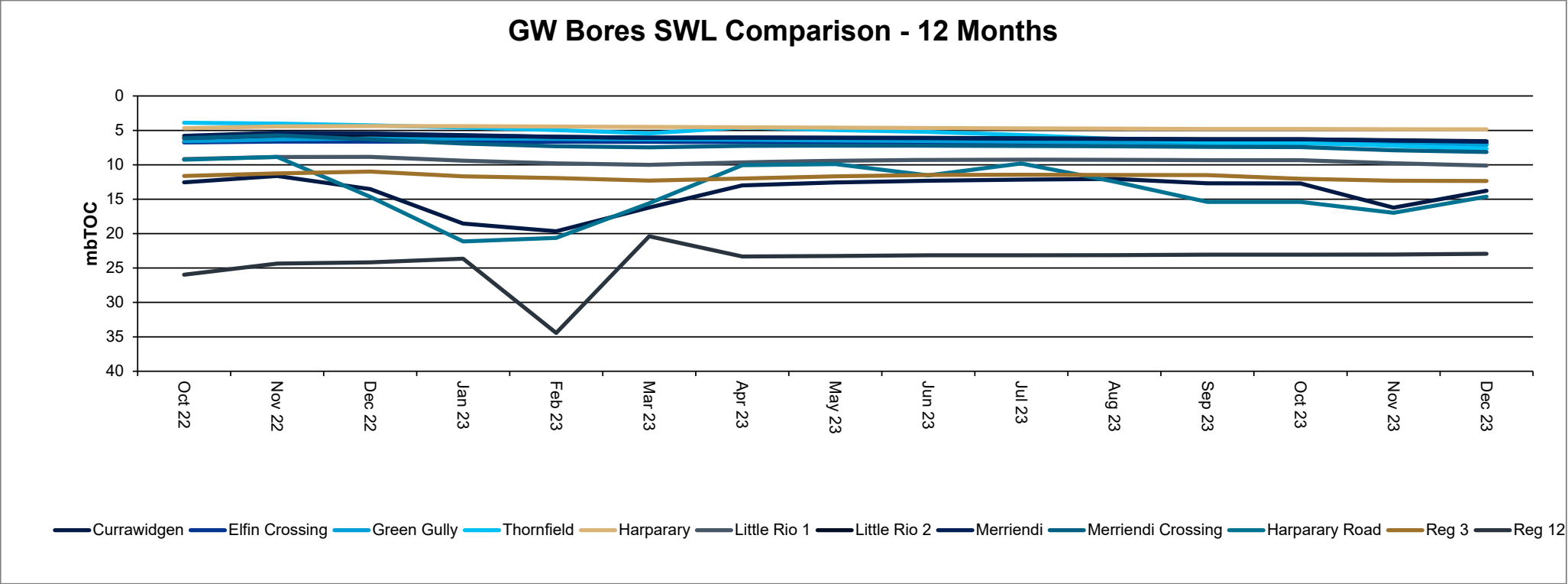
Maules Creek Coal
October 2023



Monitoring Locations



Groundwater Levels

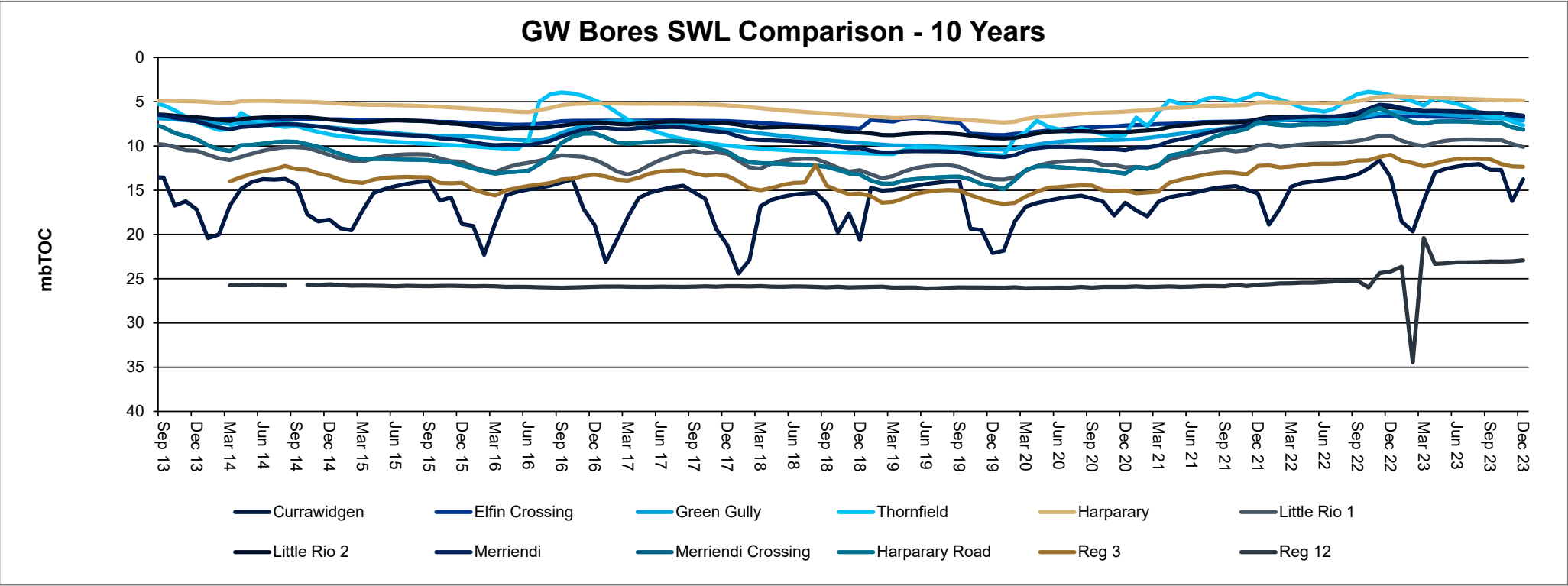


* Note Reg12 and Reg3 both within Boggabri Volcanics

Source: NSW DPI- Water & MCCM monitoring data

Groundwater Levels

GW Bores SWL Comparison - 10 Years

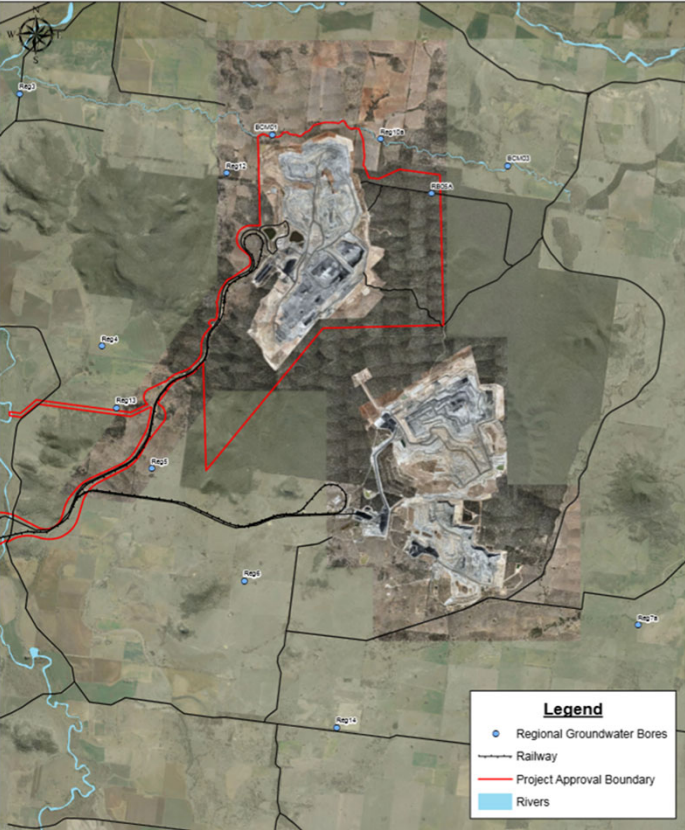


Source: NSW DPI- Water & MCCM monitoring data

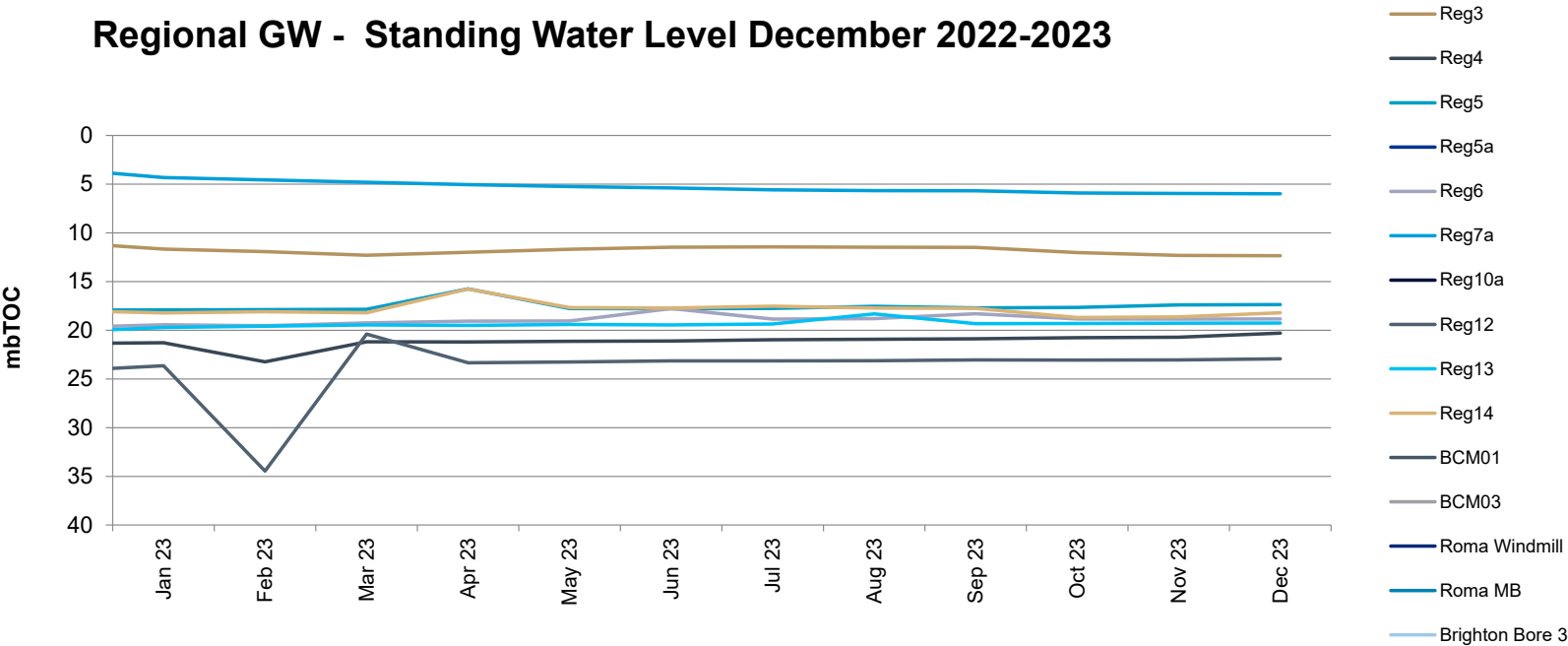
* Note Reg12 and Reg3 both within Boggabri Volcanics

Standing Water Levels

Regional Groundwater Bores



Standing Water Levels

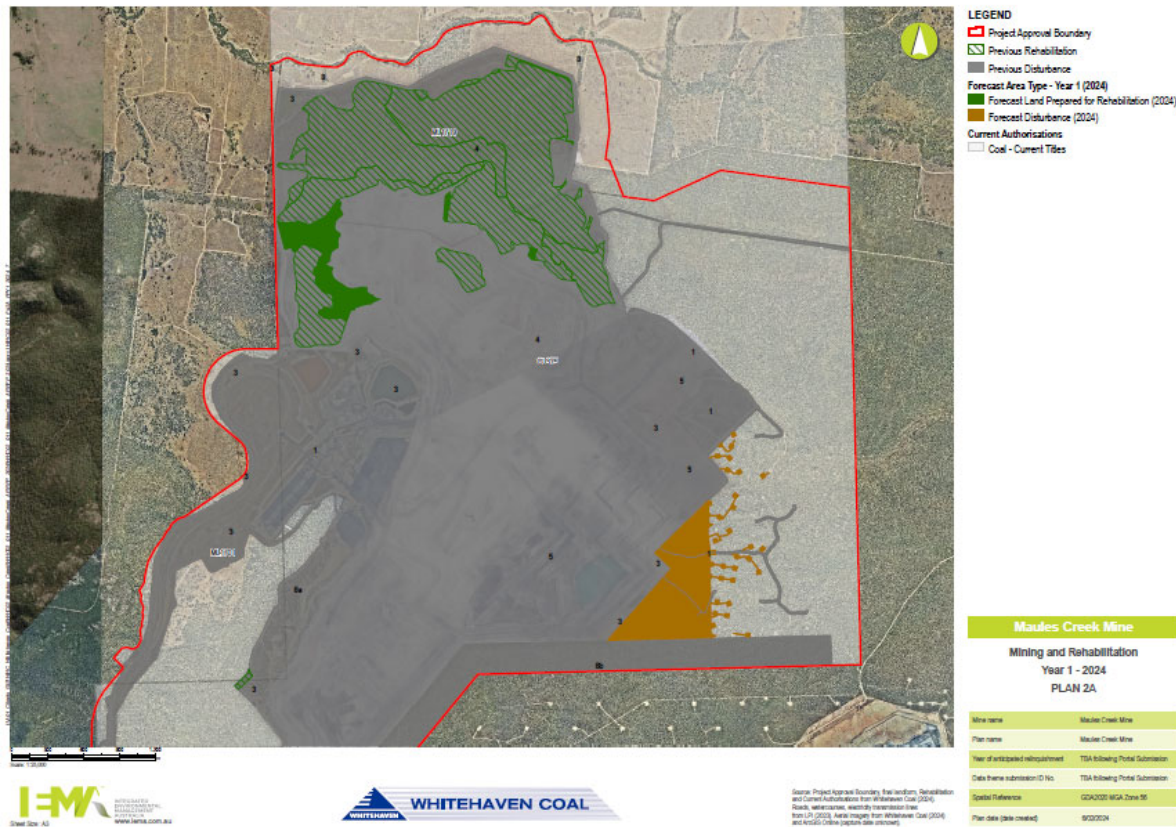


Tyre Disposal 2023

- No tyres have been disposed of during Q4 of 2023

2024 Clearing

52.14ha clearing proposed in accordance with the Forward Plan



Clearing areas are depicted in the forward plan which is publicly available at: <https://whitehavencoal.com.au/our-business/our-assets/maules-creek-mine/>

Environmental Monitoring

Q3 2023 - Biodiversity

Maules Creek Coal Mine
October 2023



Biodiversity Management

Feral Animal Management

Most recent routine Whitehaven Biodiversity Feral Animal Control program (October to December 2023) results were:

- 1,097 out of total 1,710 pigs trapped or baited were from the Maules Offset properties; and,
- 193 out of total 284 Goats harvested were from the Maules Offsets properties; and,
- 98 out of total 227 Canid Pest Ejectors (1080) consumed were from the Maules Offsets properties.

Weed Control

During October to December 2023 the following weed control was undertaken via spot spraying/jetting on the Maules Offset Properties:

127ha of Broadleaf weeds such as Pattersons Curse, Turnip, Saffron Thistle and Variegated thistle has been treated.

8ha of Woody Weeds such as Box Thorn, Prickly Pear, and Reveg Holes has been treated.

There was also 105ha of tracks sprayed as part of the track maintenance.

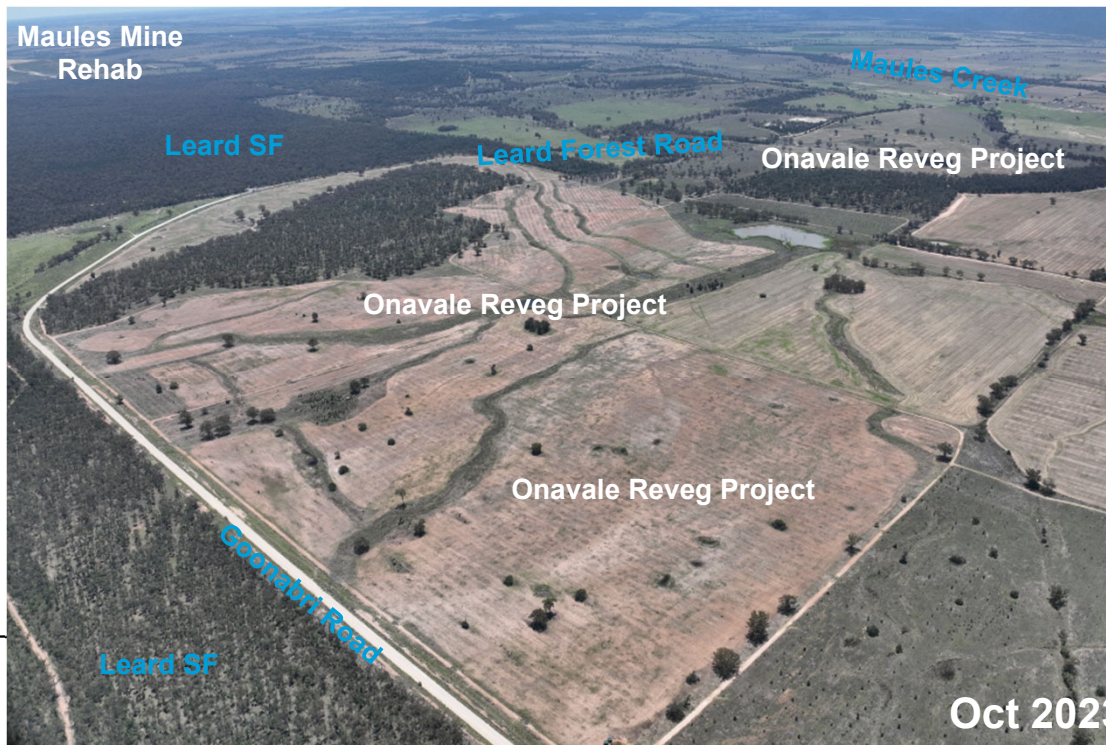


Biodiversity Management

Revegetation Program

Onavale Reveg Project was completed in October 2023 converting (in time) former pasture improved paddock into Native Box/Ironbark Woodland with 960kg of native grass seed sown over 210ha and 20,000+ seedlings planted over 254ha with 83% survival to date that will enhance and promote connectivity between the eastern Leard SF and Nandewar Range.

Overall 2023 resulted in 331ha being planted nearly 26,000 trees and watering program achieving 78%.



Oct 2023



Jan 2024

Biodiversity Management

Annual Fauna and Spring Flora Monitoring

Spring Flora Monitoring was completed with over 100 plots surveyed and Annual Fauna Monitoring program completing Bird and Reptile Surveys with Microbat Surveys continuing until February.

Fire Management

Earthwork contracting maintaining existing tracks to mineral earth fire breaks and constructing new fire break tracks on Additional Offset properties.

While Pilliga Bushfire did not impact any Maules biodiversity properties; there two lightning strike bushfires on Maules biodiversity properties in November & December burning combined total of 139ha.

Upcoming Biodiversity Projects and Works

Complete Annual Fauna Monitoring Programs.

Monthly Pest Animal Management Program Jan to March 2023.

Continued Seasonal Weed Control Programs.

Continue Tree Watering program and commence 2024 Reveg preparation.

Quarterly Threatened Flora Inspections and Programs ongoing.

Continued Fire Break Track Maintenance Program ongoing.

Planning for 2024 Ecological Burn Program.



MCC CCC Meeting Approvals Update

Maules Creek Coal Mine
October 2023



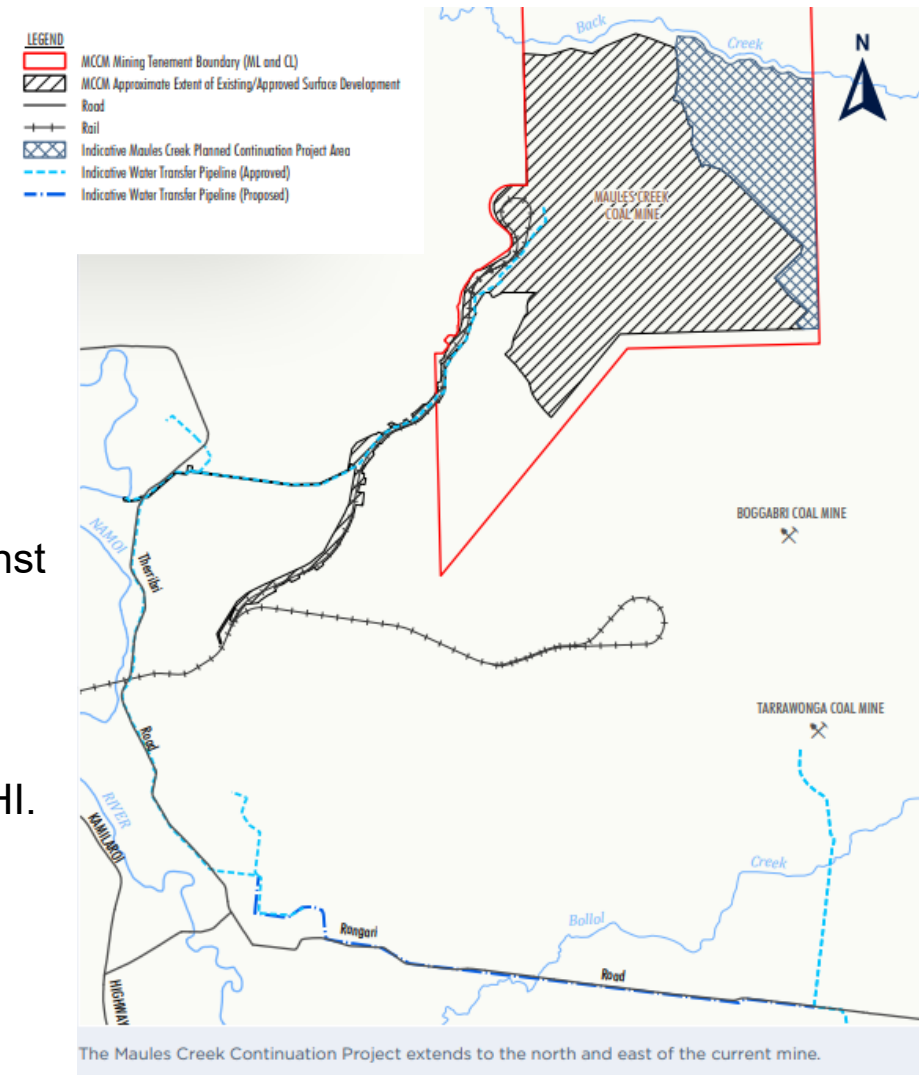
Approvals

Continuation Project EIS

- Environmental studies/modelling and community consultation ongoing.
- SEARs issued 21st November 2023.
- Scope of all environmental assessments being reviewed against SEARs.

Modification 9 – BOS and ETL

- A Response to Submissions (RtS) report was provided to DPHI.
- Application currently with DPHI for finalisation of assessment.



Autonomous Haulage System

AHS Update

Maules Creek Coal Mine
October 2023



Further information to come

Community

Maules Creek Coal Mine
October 2023



Community Investments

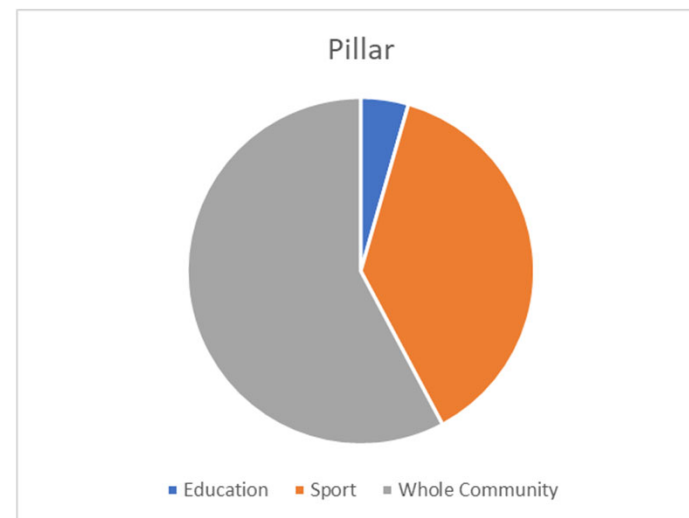
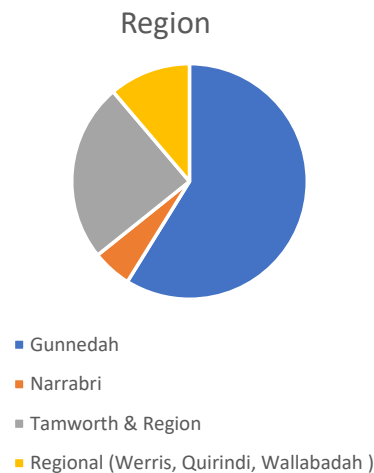
Whitehaven continues to support the local Community with donations and sponsorships.

More information on Sponsorships and Donations can be found at:

<https://whitehavencoal.com.au/sustainability/community/donations-sponsorships/>

Donations/ Sponsorship October 2023 – December 2023 \$110,520.48 spent in the local community.

Some highlights are: Manilla Team Penning, Narrabri High School – Science Forum, Werris Creek Community Garden, Red Chief Christmas Event, Movember, Women In Mining Breakfast, Tamworth Touch Football, Dorothea Mackellar Poetry Awards, Werris Creek Golf Club New Years Eve Event, Gunnedah Meals On Wheels.



Thank you

Maules Creek Coal Mine
October 2023



Maules Creek Coal Mine Community Consultative Committee Meeting #44

Environmental Monitoring Report For the Q4 period, October – December 2023

Attended Noise Monitoring

Maules Creek Coal (MCC) engaged an independent acoustic consultant to conduct LAeq (15minutes) and LA1 (1 minute) attended noise monitoring at six monitoring locations on site.

A. LAeq, 15minute; GENERATED BY MCCM AGAINST OPERATIONAL DAY NOISE CRITERIA; October – December 2023.

The results show that MCCM is within EPL 20221 compliance limits, that operations did not exceed the applicable LAeq (15minute) criteria of 35dB and the EPA's Noise Policy for Industry compliance guidelines.

Table 1 - October Noise Monitoring

Location	Start date and Time	Wind		Stability class	Very enhancing? ¹	Limits, dB ¹		Site levels, dB ²		Exceedances, dB	
		Speed m/s	Direction ³			LAeq,15minute	L _{Amax}	LAeq,15minute	L _{Amax}	LAeq,15minute	L _{Amax}
NM1	18/10/2023 22:30	3.3	144	D	Yes	40	50	IA	IA	Nil	Nil
NM2	18/10/2023 23:30	3.3	130	D	Yes	44	50	<20	25	Nil	Nil
NM3	19/10/2023 00:19	2.8	114	D	No	35	45	<25	27	Nil	Nil
NM4	18/10/2023 23:00	1.6	132	F	No	35	45	<20	<20	Nil	Nil
NM5	18/10/2023 22:00	3.9	144	D	Yes	40	50	IA	IA	Nil	Nil
NM6	18/10/2023 23:55	3.2	130	D	Yes	40	50	IA	IA	Nil	Nil

Notes: 1. Noise limits are adjusted by +5 dB during 'very enhancing meteorological conditions' in accordance with the NPfI.
2. Site-only LAeq,15minute, includes modifying factor penalties if applicable.
3. Degrees magnetic north, "-" indicates calm conditions.

Table 2 – November Noise Monitoring

Location	Start date and Time	Wind		Stability class	Very enhancing? ¹	Limits, dB ¹		Site levels, dB ²		Exceedances, dB	
		Speed m/s	Direction ³			LAeq,15minute	L _{Amax}	LAeq,15minute	L _{Amax}	LAeq,15minute	L _{Amax}
NM1	8/11/2023 22:30	3.1	88	D	Yes	40	50	IA	IA	Nil	Nil
NM2	8/11/2023 23:30	4.1	71	D	Yes	44	50	IA	IA	Nil	Nil
NM3	9/11/2023 00:20	3.4	62	D	Yes	40	50	IA	IA	Nil	Nil
NM4	8/11/2023 23:00	3.4	77	D	Yes	40	50	IA	IA	Nil	Nil
NM5	8/11/2023 22:00	0.4	92	F	No	35	45	IA	IA	Nil	Nil
NM6	8/11/2023 23:55	3.7	67	D	Yes	40	50	NM	NM	Nil	Nil

Notes: 1. Noise limits are adjusted by +5 dB during 'very enhancing meteorological conditions' in accordance with the NPfI.
2. Site-only LAeq,15minute, includes modifying factor penalties if applicable.
3. Degrees magnetic north, "-" indicates calm conditions.

Table 3 – December Noise Monitoring

Location	Start date and Time	Wind		Stability class	Very enhancing? ¹	Limits, dB ¹		Site levels, dB ²		Exceedances, dB	
		Speed m/s	Direction ³			L _{Aeq,15minute}	L _{Amax}	L _{Aeq,15minute}	L _{Amax}	L _{Aeq,15minute}	L _{Amax}
NM1	11/12/2023 22:30	1.2	15	F	No	35	45	IA	IA	Nil	Nil
NM2	11/12/2023 23:30	0.6	165	F	No	39	45	IA	IA	Nil	Nil
NM3	12/12/2023 00:20	1.2	209	F	No	35	45	IA	IA	Nil	Nil
NM4	11/12/2023 23:00	0.6	284	F	No	35	45	<20	<20	Nil	Nil
NM5	11/12/2023 22:00	0.2	0	F	No	35	45	IA	IA	Nil	Nil
NM6	11/12/2023 23:55	1.3	194	F	No	35	45	IA	IA	Nil	Nil

Notes: 1. Noise limits are adjusted by +5 dB during 'very enhancing meteorological conditions' in accordance with the NPFL.
2. Site-only L_{Aeq,15minute}, includes modifying factor penalties if applicable.
3. Degrees magnetic north, "-" indicates calm conditions.

Blast Monitoring

There was 24 blasts at MCCM during Q4 2023. All blast monitoring results recorded within the reporting period have complied with applicable overpressure and ground vibration limits specified in the respective approvals.

Table 5 – Blast Results Summary

Parameter	Units	Frequency	Number	Average	Max	100% Limit	Exceedance (Yes / No)
Noise	dB (Lin Peak)	All	24	93.11	114.5	120	No
Vibration	mm/s		24	0.12	0.52	10	No

Air Quality

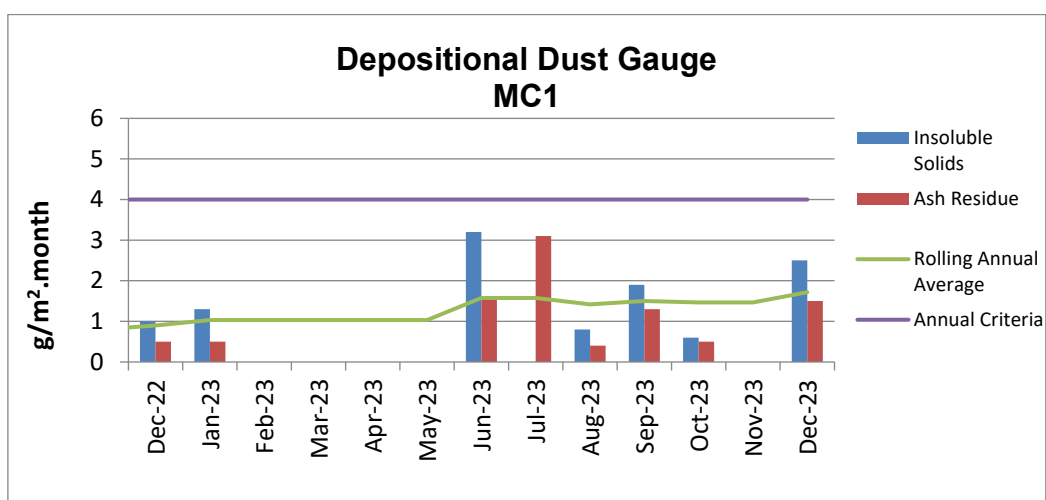
A. Total Depositional Dust

The 12 monthly rolling annual average remains below the relevant Project Approval (PA 10_0138) criteria of 4g/m²/month for the respective monitoring points.

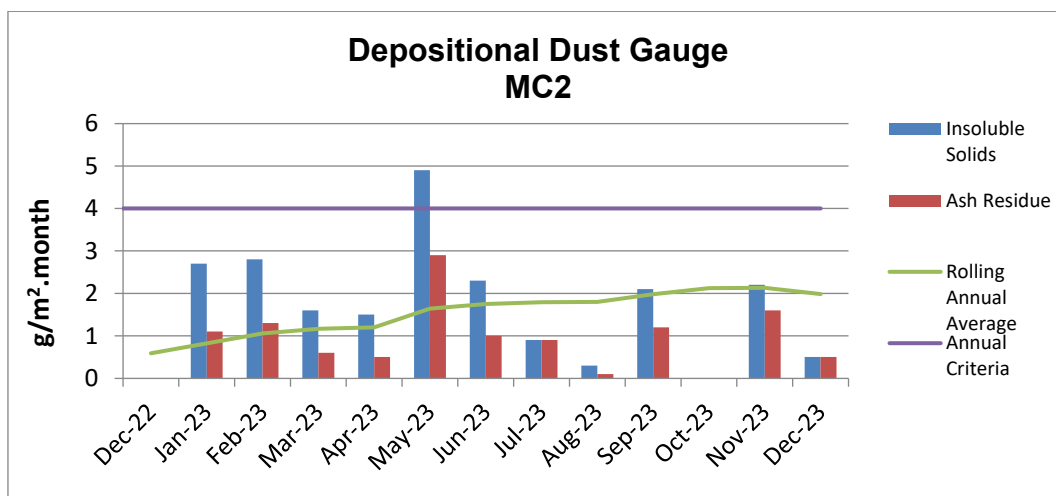
Table 6 – Depositional Dust Gauge Results [g/m²/month]

MONTH	MC1	MC2	MC3	MC4
October	0.6	5.3c	2.0	0.9
November	3.8c	2.2	3.8c	1.0
December	2.5	0.5	0.6	0.4
12 MONTH ROLLING AVERAGE	1.7	2.0	2.5	1.1

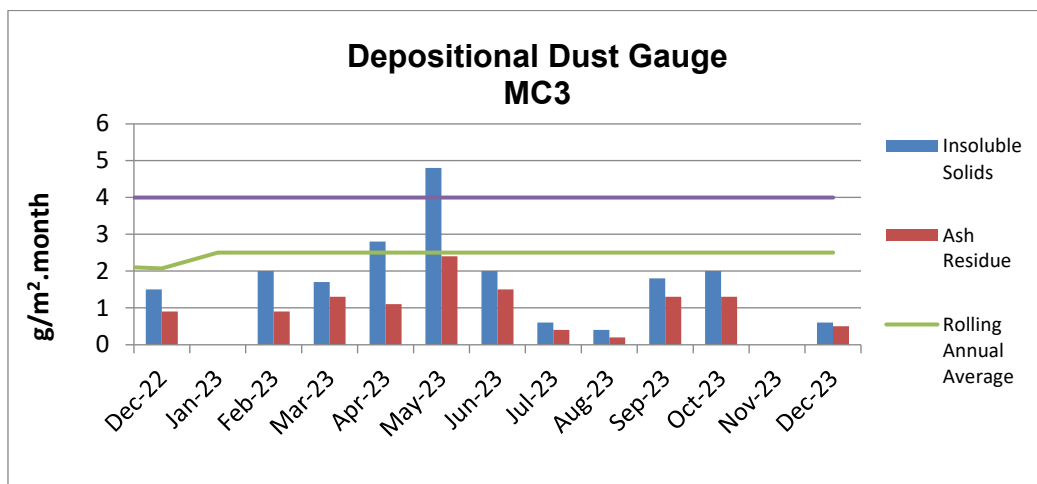
^c samples contaminated by bird dropping, decomposed insects or vegetable matter.



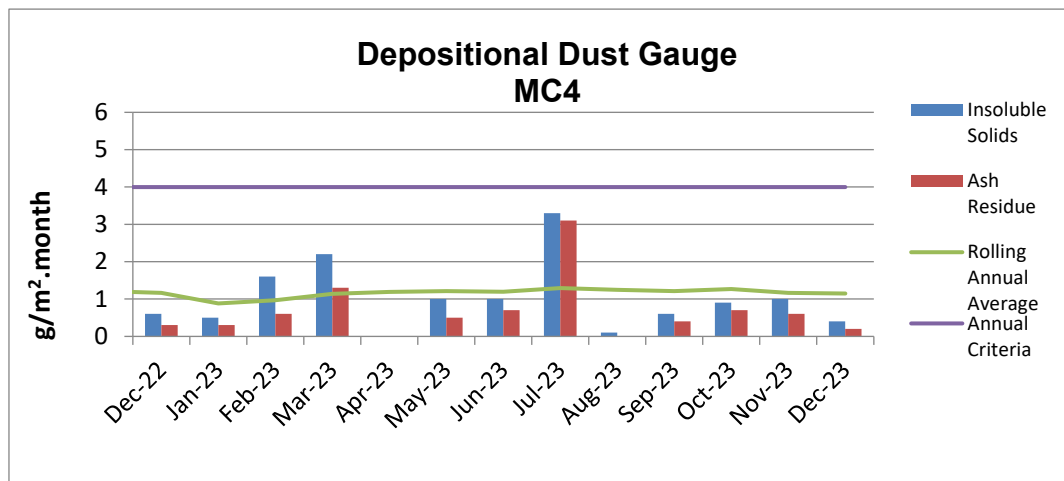
* Blank cells indicate sample periods where the sample has been contaminated and excluded from the results tables due to contaminated material (insect larvae, bird droppings, vegetation etc.).



* Blank cells indicate sample periods where the sample has been contaminated and excluded from the results tables due to contaminated material (insect larvae, bird droppings, vegetation etc.).



* Blank cells indicate sample periods where the sample has been contaminated and excluded from the results tables due to contaminated material (insect larvae, bird droppings, vegetation etc.).

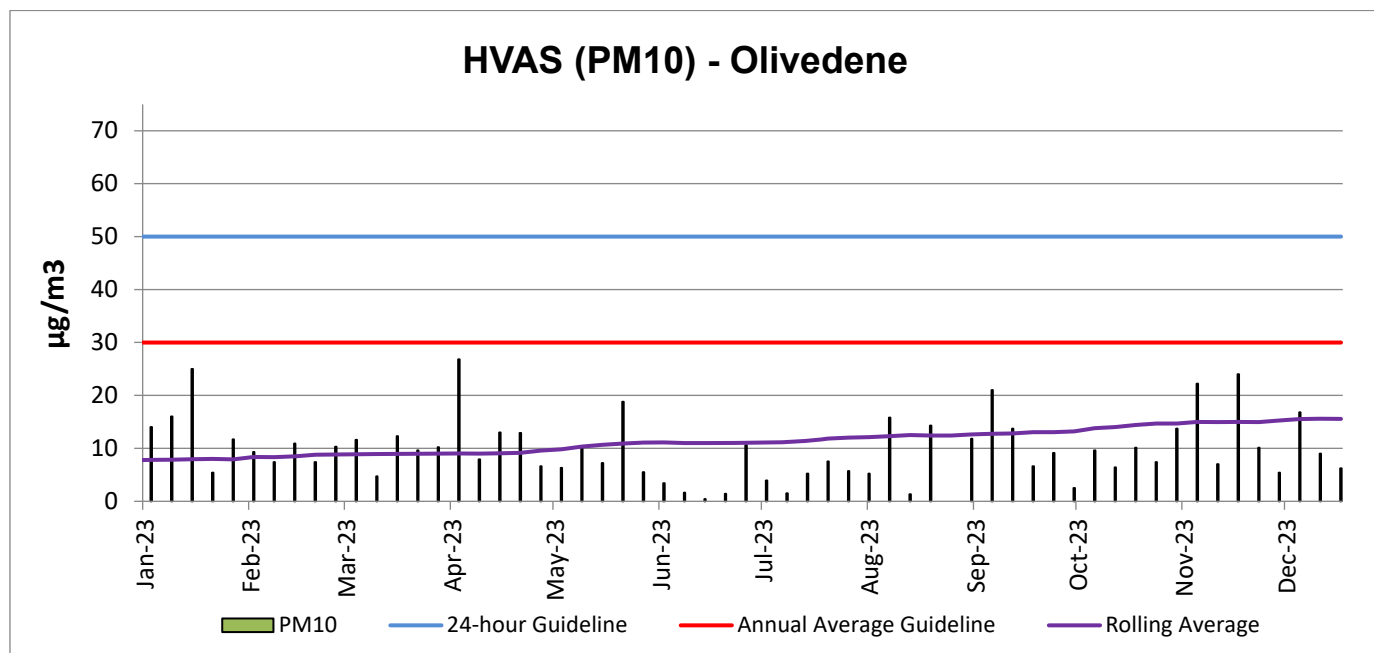


* Blank cells indicate sample periods where the sample has been contaminated and excluded from the results tables due to contaminated material (insect larvae, bird droppings, vegetation etc.).

B. High Volume Air Sampling (HVAS)

The HVAS monitor is located on the property 'Olivedene,' a mine owned property on Therribri Road. During past 12 months, there have been no exceedances of the 24-hour average of 50 $\mu\text{g}/\text{m}^3$.

HVAS PM_{10} Rolling Annual Average as of December was **15.6 $\mu\text{g}/\text{m}^3$** , which is below the Annual Average Guideline of 30 $\mu\text{g}/\text{m}^3$.



C. TEOM - PM10 Results

The annual rolling average for PM10 at the Maules Creek Coal TEOM1 was **11.9 $\mu\text{g}/\text{m}^3$** , which is below the Project Approval annual average criteria of 30 $\mu\text{g}/\text{m}^3$ as shown in the following figure. There were two exceedances of the 24-hour average for Q4 2023, these related to the Pilliga Bushfires.

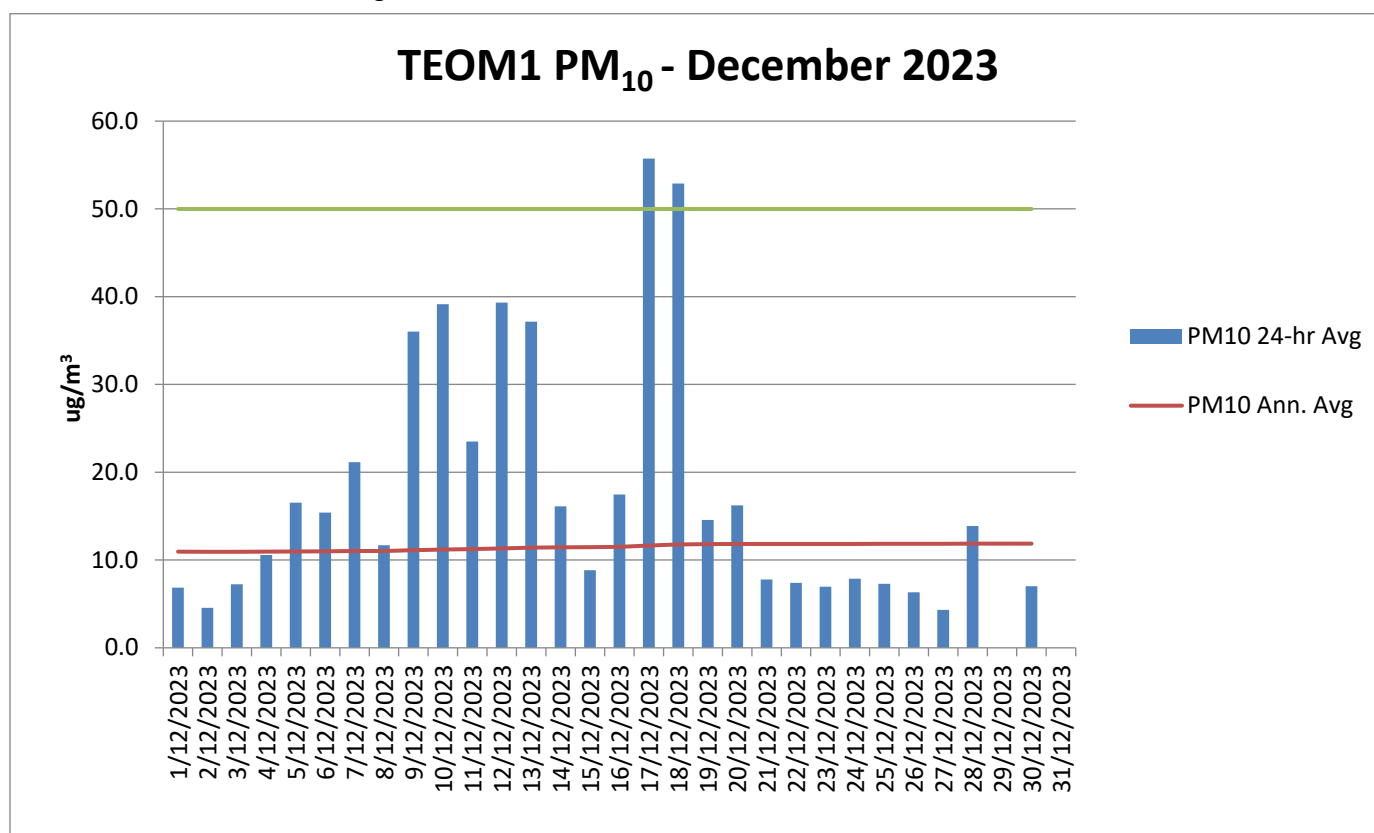


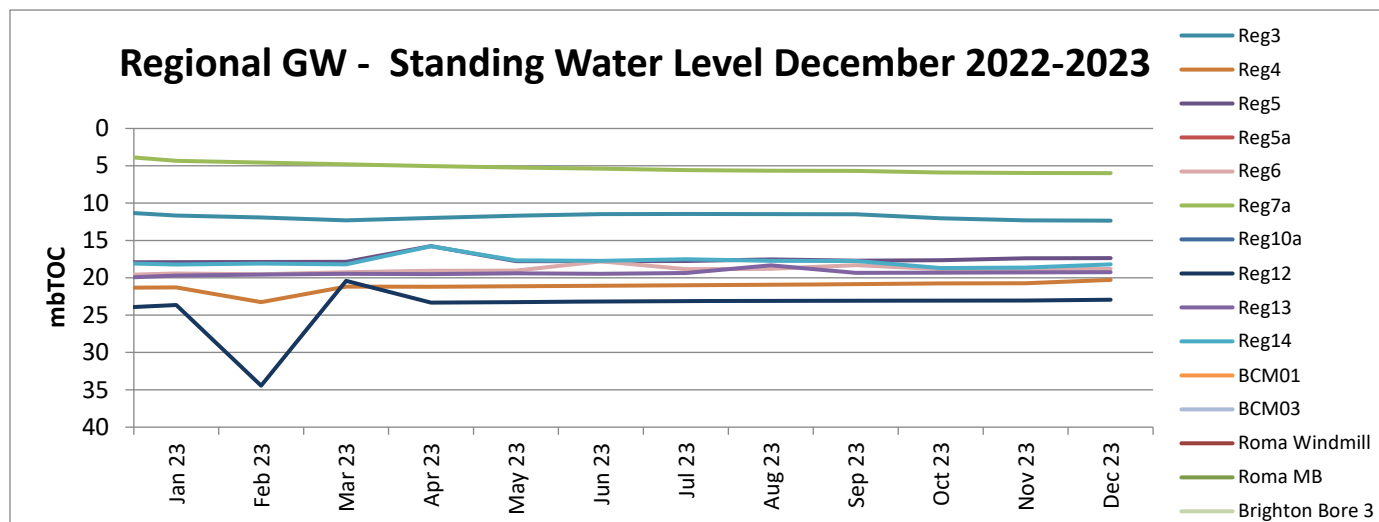
Figure 1 - TEOM Result – Particulate Matter PM₁₀ $\mu\text{g}/\text{m}^3$

* Blank columns indicate sample periods where there was either power outage, maintenance or other related causes.

Water Monitoring

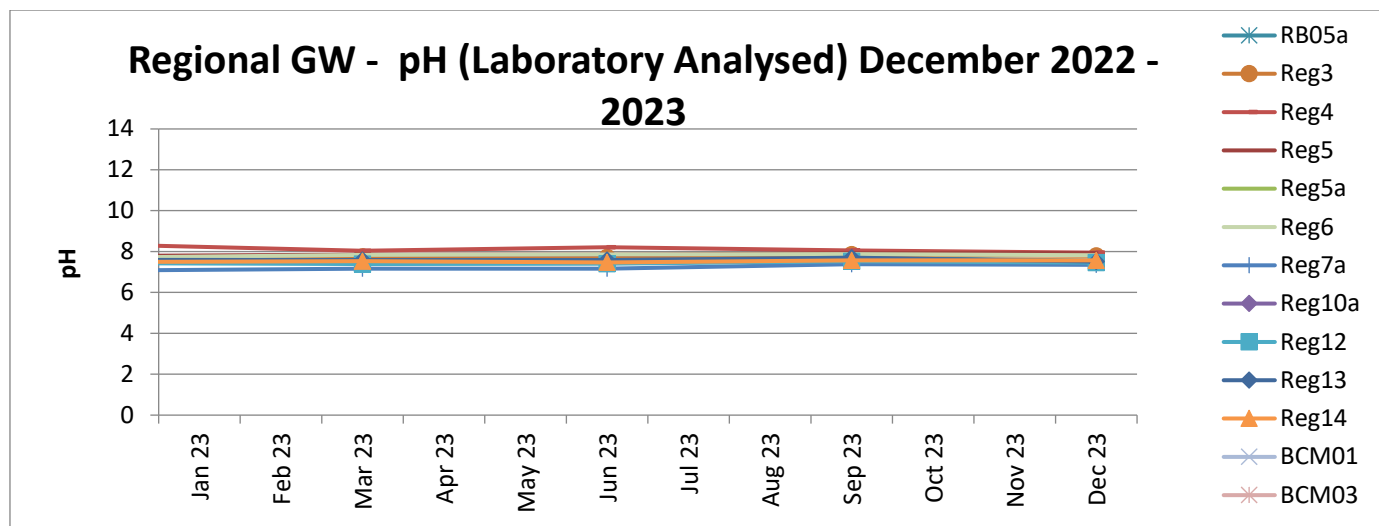
A. Groundwater

Groundwater monitoring results in open standpipe piezometers show levels to be relatively stable. The Regional bores were installed between Q4, 2013 and Q1, 2014. BCM01, BCM03, Reg10 are shallow bores which have remained dry since construction in 2013.



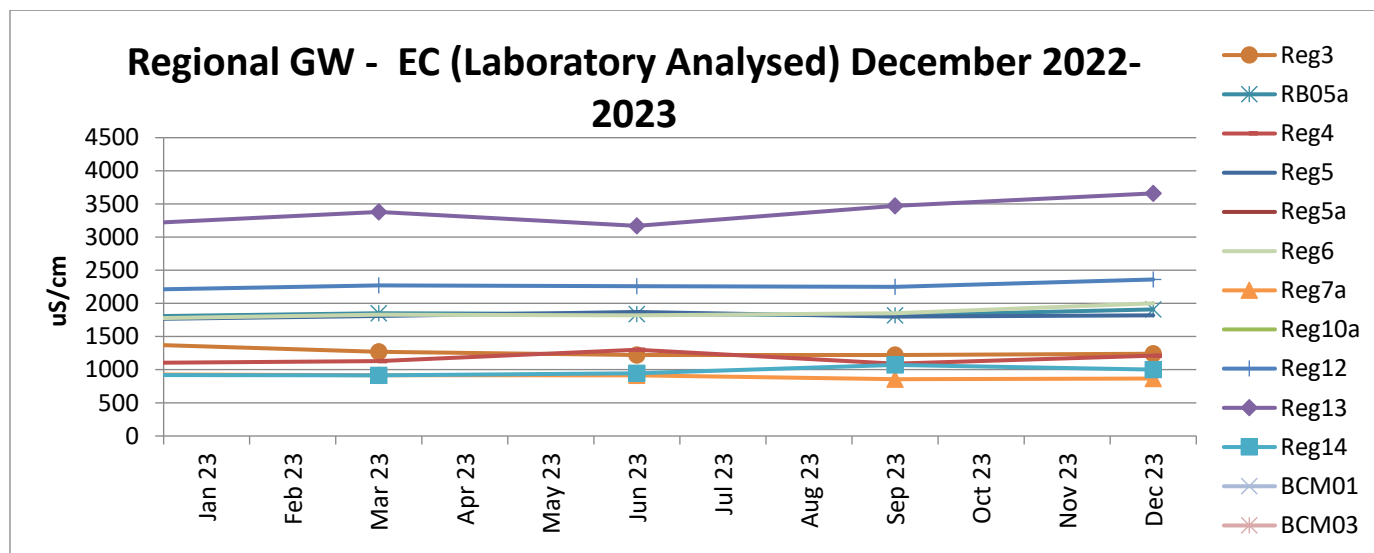
Acidity / Alkalinity (pH)

Over the past twelve months pH readings across the regional bores have remained static with very little fluctuation.



Electrical Conductivity

Laboratory Electrical Conductivity (EC) levels are all within historic groundwater EC range of 500_{µs/cm} to 2,500_{µs/cm}, with the exception of monitoring bore Reg13 which has a historic groundwater EC range of 2,500_{µs/cm} to 4,100_{µs/cm}. Within the last twelve months EC has remained static.

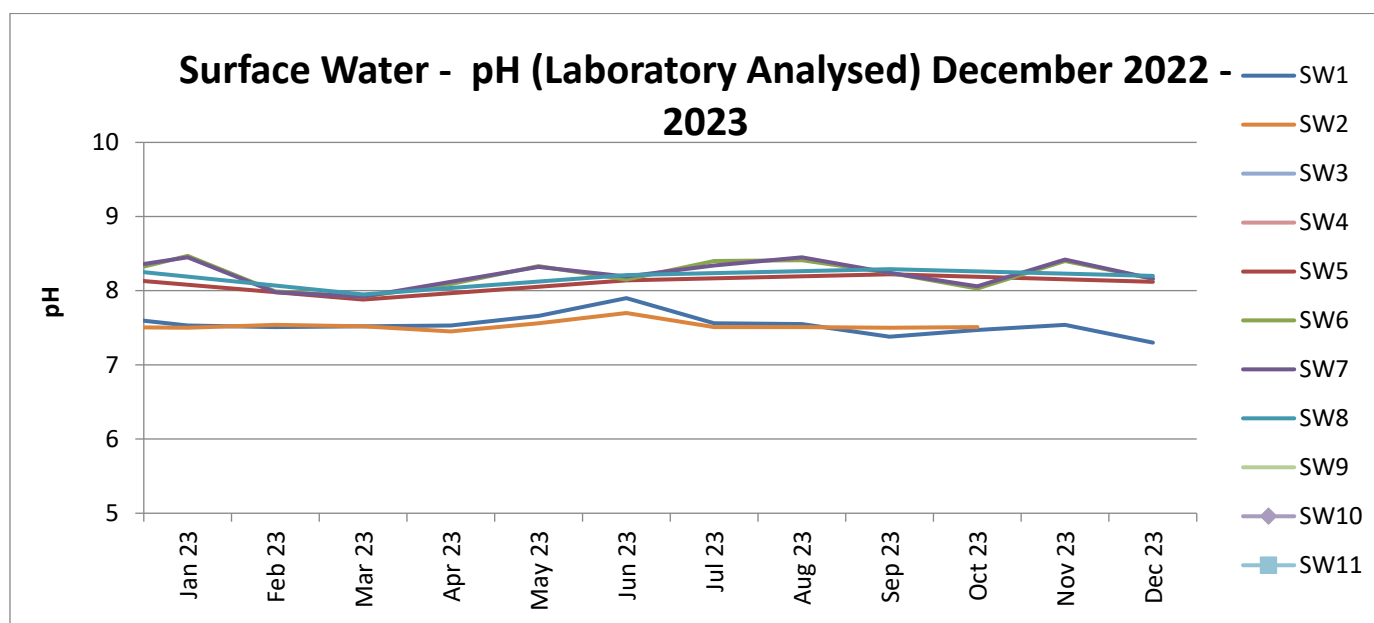


B. Surface Water – Creeks and Rivers

Routine surface water monitoring is conducted in surrounding creeks and rivers on a monthly basis. Results for parameters including pH, EC and Total Suspended Solids (TSS) are shown in the figures below. There are eleven surface water monitoring points, of which a maximum of six sites were able to be sampled during Q4 2023.

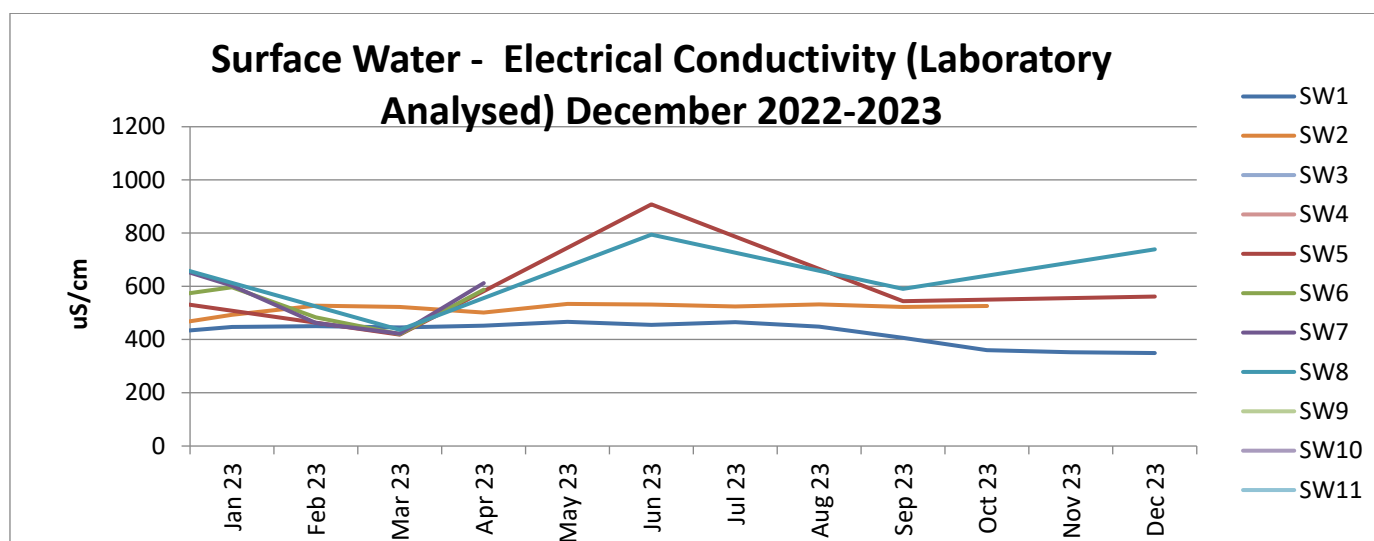
Acidity / Alkalinity (pH)

Monitoring results for pH in creeks and rivers surrounding MCCM are all trending within the ANZECC range for Irrigation, Ecosystem Health and Recreation.



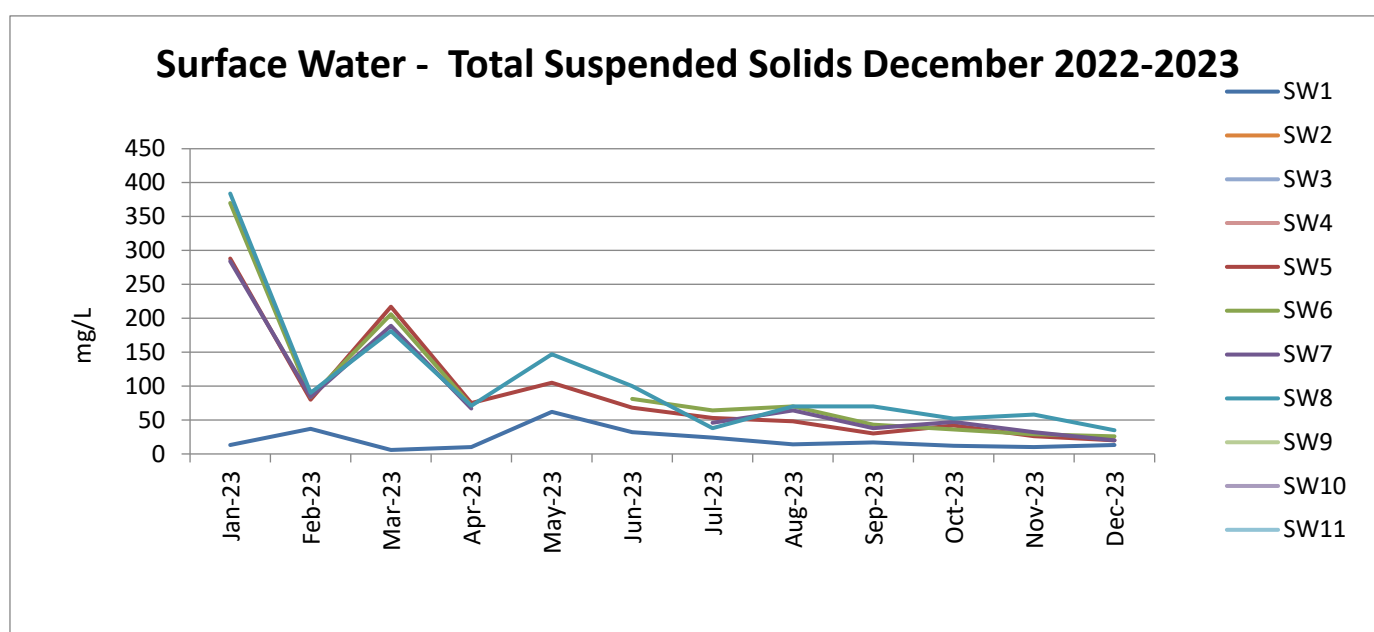
Electrical Conductivity

Surface water EC trends have remained consistent with SW5, SW6, SW7 and SW8 all historically variable. SW5, SW6, SW7 and SW8 are points along the Namoi River which are subject to regulated and variable flow regimes.



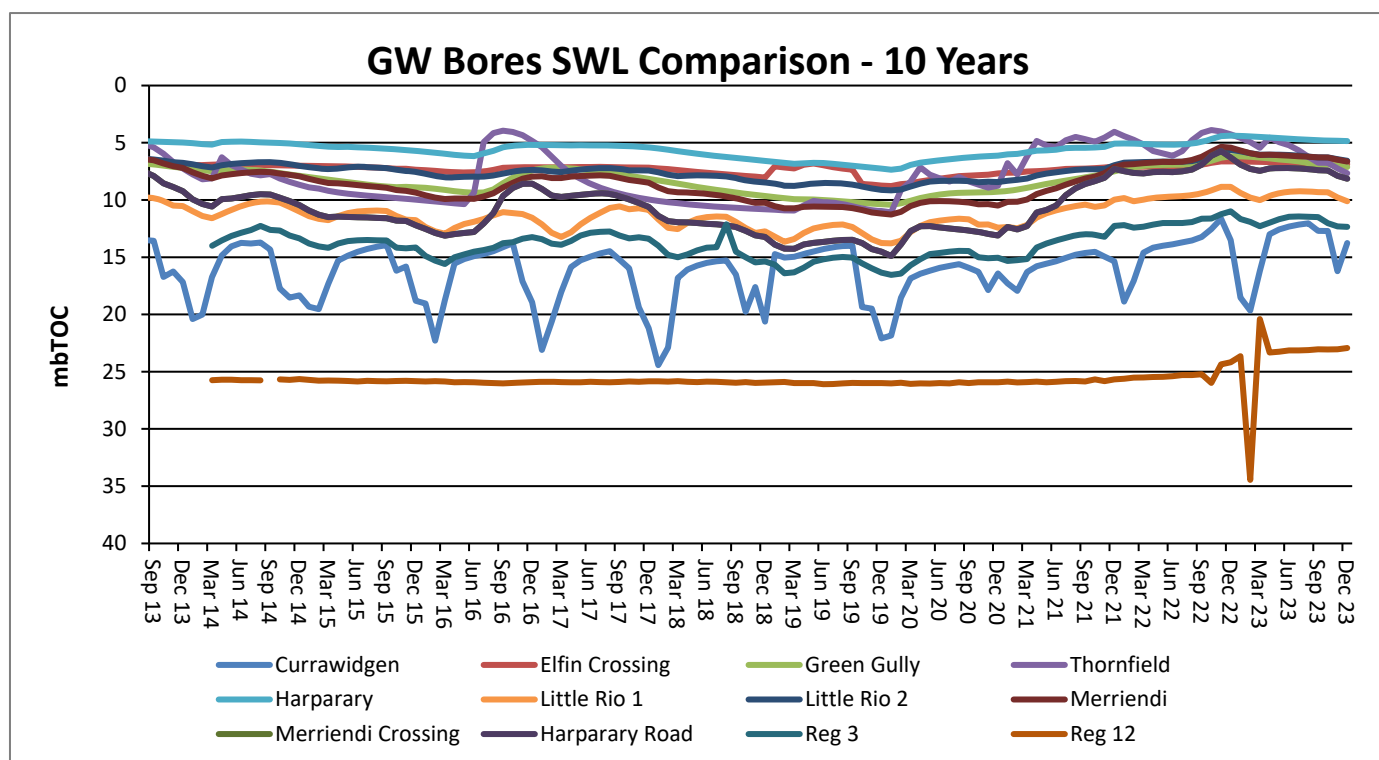
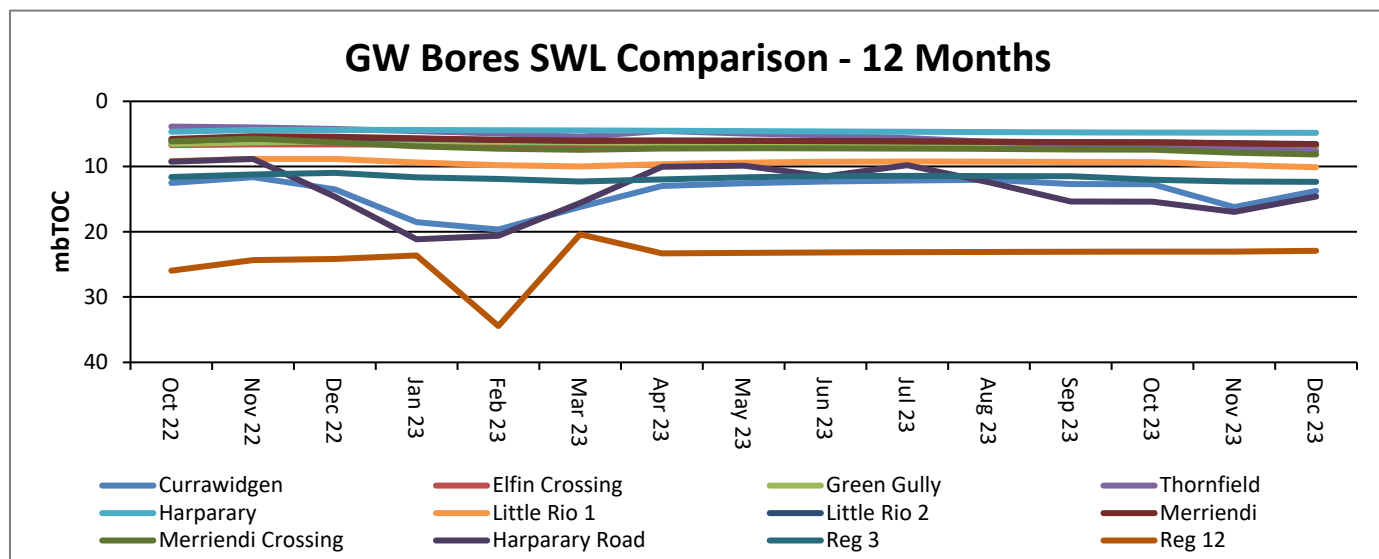
Total Suspended Solids (TSS)

Surface water TSS trends have remained generally consistent with historical results. SW5, SW6, SW7 and SW8 are historically variable as they are located along the Namoi River which is subject to regulated and variable flow regimes. The Q4 results have continued to stabilise on the back of significant rainfall events in Q4 2022 and Q1 2023, as previously mentioned in Q3. This is demonstrated in the graph below.



Regional Groundwater Monitoring

Maules Creek Coal Mine monitors regional bores across the region.



Rehabilitation

Progressive rehabilitation works were completed at MCC, 20.9ha were completed in accordance with the FWP.

Feral Animal Management

The proposed MCC feral animal management control program has been updated to accommodate the increase in feral species across the region. Additional waves of baiting and trapping are to be implemented throughout Q1.

Community Complaints

MCC received two compliant in Q4.

Date received	Method	Category	Nature of Complaint	MCCM Response
6/10/2023	Email	Noise	The EPA received a complaint relating to noise on the night of the 4th October leading into the morning of the 5th October 2023.	MCC reviewed real time monitoring data, operational activities and management measures and provided a response to the agency.
24/12/2023	Phone	Transport	Bus parked in inconvenient location requiring relocation	Bus was relocated immediately.