



**Resources  
Regulator**

**FWP0001783**

# **GUNNEDAH COLLIERY FORWARD PROGRAM**

**Thursday 1 January 2026 to Sunday 31 December 2028**

## Summary

Detail	
<b>Mine</b>	Gunnedah Colliery
<b>Reference</b>	FWP0001783
<b>Forward program commencement date</b>	Thursday 1 January 2026
<b>Forward program end date</b>	Sunday 31 December 2028
<b>Forward program revision (if applicable)</b>	
<b>Contact</b>	Daryl Robinson
<b>Mining leases</b>	CCL 701 (1973), ML 1680 (1992)
<b>Project location</b>	Namoi Mining PTY. LTD.
<b>Date of submission</b>	Friday 27 February 2026
<b>Document URL</b> <small>Security reminder: Please exercise caution before opening external links. If a link appears suspicious, avoid clicking it and report it to the Resources Regulator.</small>	<a href="https://whitehavencoal.com.au/our-business/">https://whitehavencoal.com.au/our-business/</a>

## Important

The department may make the information in your program and any supporting information available for inspection by members of the public, including by publication on its website or by displaying the information at any of its offices. If you consider any part of your program to be confidential, please communicate this to the department via the message function on this submission within the Resources Regulator Portal.

## Three-year forecast - surface disturbance activities

### Project description

CCL701 encompasses the Black Jack Colliery and operations at Melville Open Cut, Springfield, Brickworks, No5, No4 and No2 entries and Underground workings, the Gunnedah Colliery Coal Processing Plant (CPP), a disused tramway and old coal loader, previous exploration areas, and portions of Black Jack Mountain. These sites are located between 5 and 10 kilometres to the southwest of Gunnedah town centre within the New England north-west Region of New South Wales (NSW). Whitehaven has divided the historical mining areas within CCL701 into discrete Closure Management Areas (CMAs). The CMAs adopted for the purpose of this RMP are as follows: CMA 1: Black Jack / Melville Underground. CMA 2: No. 2, No.4 and No.5 Underground. CMA 3: Melville Open Cut. CMA 4: Coal Preparation Plant (CPP). CMA 5: Tramway and Old Coal Loader. CMA 6: Other Lands. CMA 7: Road Corridors. CMA 8: Springfield Rehabilitation Plan Area. CMA 9: Brickworks Opencut Area\*. CMA 10: Melville Opencut Area\*

### Description of surface disturbance activities

#### Exploration activities

No exploration will be undertaken in the next three years.

#### Construction activities

No construction will occur in the next three years.

## Mining schedule

Mining development method and sequencing and general mine features.

No mining will occur in the next three years.

Areas identified for emplacements, the sequencing of emplacements, construction, and management.

No emplacements will be constructed in the FWP term.

Processing infrastructure activities and the location of tailings facilities and schedule for emplacement.

No processing infrastructure or tailings facilities are scheduled for operation in the FWP term.

Waste disposal and materials handling operations.

A licensed waste contractor will remove rubbish from site and dispose of it in a licensed facility.

## Key production milestones

MATERIAL	UNIT	YEAR 1	YEAR 2	YEAR 3
Stripped topsoil (if applicable)	(m <sup>3</sup> )	0	0	0
Rock/overburden	(m <sup>3</sup> )	0	0	0

<b>Ore</b>	(Mt)	0	0	0
<b>Reject material<sup>1</sup></b>	(Mt)	0	0	0
<b>Product</b>	(Mt)	0	0	0

---

<sup>1</sup>This includes coarse rejects, tailings and any other wastes resulting from beneficiation.

## Three-year rehabilitation forecast

### Rehabilitation planning schedule

#### **Rehabilitation planning schedule**

Rehabilitation planning that will occur over the next FWP term includes detailed planning of the remaining demolition and mine entry sealing activities.

#### **Stakeholder consultation**

Stakeholder consultation over the next FWP term will involve liaison with underlying landowners of the mining lease to ensure that rehabilitation is meeting the final land use objectives.

#### **Rehabilitation studies, risk assessments and/or design work**

No further rehabilitation studies are planned for the next FWP term. Risk assessments associated with the planned entry sealing activities will be undertaken and the execution of the work will be overseen by a statutory mine supervisor.

## Rehabilitation research and trials

RRT NUMBER	PROJECT/TRIAL NAME	OBJECTIVE OF TRIAL/PROJECT	METHODOLOGY	EXPECTED DATE OF COMPLETION	STATUS
---------------	--------------------	----------------------------	-------------	--------------------------------	--------

## Rehabilitation maintenance and corrective actions

There are no known rehabilitation performance issues or planned rehabilitation maintenance. Appropriately qualified and experienced weed contractors will be engaged to undertake weed control works across CCL701.

## Rehabilitation schedule

Sealing of the historic mine entries will be completed followed by final seeding of any disturbed areas.

## Completion of rehabilitation

An application for mining rehabilitation completion is likely to be submitted outside of the next FWP term.

## Subsidence remediation for underground operations

No subsidence monitoring is anticipated to be conducted. No subsidence repairs are anticipated to be required in the next FWP term.

## Progressive mining and rehabilitation statistics

### Three-yearly forecast cumulative disturbance and rehabilitation progression

Forecast	UNIT	YEAR 1	YEAR 2	YEAR 3
A1 Total disturbance footprint - surface disturbance	(ha)	8.9	8.9	8.9
O Total active disturbance	(ha)	-486.55	-490.09	-490.09
P Total new area of land proposed for active rehabilitation	(ha)	39.77	43.3	43.3

## Rehabilitation key performance indicators (KPIs)

Forecast	UNIT	YEAR 1	YEAR 2	YEAR 3
O Total new disturbance area during reporting period	(ha)	2.98		
P Total new area of land proposed for rehabilitation during the reporting period	(ha)	39.77	3.54	
Q Annual rehabilitation to disturbance ratio		13.32		

## Attachment 1 - Reporting Definitions

REPORTING CATEGORY	DEFINITION
<p><b>A</b>      <b>Total disturbance footprint - surface disturbance</b></p>	<p>All areas within a mining lease that either have at some point in time or continue to pose a rehabilitation liability due to surface disturbance activities.</p> <p>The total disturbance footprint is the sum of the total active disturbance, decommissioning, landform establishment, growth medium development, ecosystem and land use establishment, ecosystem and land use development and rehabilitation completion (see definitions below).</p> <p>Underground mining operations should not include the footprint of underground mining areas/subsidence management areas in the total disturbance footprint.</p>
<p><b>B</b>      <b>Total active disturbance</b></p>	<p>Includes on-lease exploration areas, stripped areas ahead of mining, infrastructure areas, water management infrastructure, sewage treatment facilities, topsoil stockpile areas, access tracks and haul roads, active mining areas, waste rock emplacements (active/unshaped/in or out-of-pit), tailings dams (active/unshaped/uncapped) and temporary stabilised areas (e.g. areas sown with temporary cover crops for dust mitigation and temporary rehabilitation).</p>
<p><b>C</b>      <b>Rehabilitation - land preparation</b></p>	<p>Includes the sum of all disturbed land within a mining lease that have commenced</p>

REPORTING CATEGORY	DEFINITION
	<p>any, or all, of the following phases of rehabilitation - decommissioning, landform establishment and growth medium development.</p> <p>Refer to the glossary of terms in this document for the definition of these phases of rehabilitation.</p>
<p><b>D</b></p> <p><b>Ecosystem and land use establishment</b></p>	<p>Includes the area which has been seeded/planted with the target vegetation species for the intended final land use. However, vegetation has not matured to a stage where it can be demonstrated that it will be sustainable for the long term and or require only a maintenance regime consistent with target reference/analogue sites.</p> <p>Typically, rehabilitation areas would be in this phase for at least two years (and usually more) before rehabilitation can be classified as being in the ecosystem and land use development phase. This phase does not apply to infrastructure areas that are being retained as part of final land use for the site.</p>
<p><b>O</b></p>	<p>The area of any new active disturbance that will be created during the next three years, as defined under definition A1 (definition A1 Table 5).</p>
<p><b>P</b></p>	<p>The sum of any new rehabilitation to be commenced in the next three years. These areas may be in the phases "Rehabilitation - Land Preparation" or the "Ecosystem &amp; Land Use Establishment" (definitions C &amp; D in Table 5).</p>

**REPORTING CATEGORY**

**DEFINITION**

**Q**

The rehabilitation to disturbance ratio (S / R) indicates how many hectares of new rehabilitation are undertaken for each hectare of land disturbed during the three years. A ratio of 1/1 indicates that the area of new rehabilitation and disturbance in that period are the same.

## Attachment 2 - Definitions

WORD	DEFINITION
<b>Active</b>	In the context of rehabilitation, land associated with mining domains is considered 'active' for the period following disturbance until the commencement of rehabilitation.
<b>Active mining phase of rehabilitation</b>	In the context of rehabilitation, the active mining phase of rehabilitation constitutes the rehabilitation activities undertaken during mining operations such as salvaging and managing soil resources, salvaging habitat resources, and native seed collection. This phase also includes management actions taken during operations to manage risks to rehabilitation and enhance rehabilitation outcomes such as selective handling of waste rock and management of tailings emplacements.
<b>Analogue site</b>	In the context of rehabilitation, an analogue site is a 'reference site' that represents an example of the defining characteristics (such as vegetation composition and structure or agricultural productivity) of the final land use. Characteristics of analogue sites can be assessed to develop the rehabilitation objectives and completion criteria for final land use domains.
<b>Annual rehabilitation report and forward program</b>	As described in the Mining Regulation 2016.
<b>Annual reporting period</b>	As defined in the Mining Regulation 2016.

WORD	DEFINITION
<b>Closure</b>	A whole-of-mine-life process, which typically culminates in the relinquishment of the mining lease. It includes decommissioning and rehabilitation to achieve the approved final land use(s).
<b>Decommissioning</b>	The process of removing mining infrastructure and removing contaminants and hazardous materials.
<b>Decommissioning Phase of Rehabilitation</b>	Activities associated with the removal of mining infrastructure and removal and/or remediation of contaminants and hazardous materials. In the context of the rehabilitation management plan this phase of rehabilitation may also include studies and assessments associated with decommissioning and demolition of infrastructure or works carried out to make safe or 'fit for purpose ' built infrastructure to be retained for future use(s) following lease relinquishment.
<b>Department</b>	Department of Primary Industries and Regional Development.
<b>Disturbance</b>	See Surface Disturbance.
<b>Disturbance area</b>	<p>An area that has been disturbed and that requires rehabilitation.</p> <p>This may include areas such as on-licence exploration areas, stripped areas ahead of mining, infrastructure areas, water management infrastructure, sewage treatment facilities, topsoil stockpile areas, access tracks and haul roads, active mining areas, waste emplacements (active/unshaped/in or out-of-pit), tailings dams (active/unshaped/uncapped), and areas requiring rehabilitation that are temporarily stabilised (i.e. managed to minimise dust generation and/or erosion).</p>

WORD	DEFINITION
<b>Domain</b>	<p>An area (or areas) of the land that has been disturbed by mining and has a specific operational use (mining domain) or specific final land use (final land use domain). Land within a domain typically has similar geochemical and/or geophysical characteristics and therefore requires specific rehabilitation activities to achieve the associated final land use.</p>
<b>Ecosystem and Land Use Development</b>	<p>This phase of rehabilitation consists of the activities to manage maturing rehabilitation areas on a trajectory to achieving the approved rehabilitation objectives and completion criteria.</p> <p>For vegetated land uses this phase may include processes to develop characteristics of functional self-sustaining ecosystems, such as nutrient recycling, vegetation flowering and reproduction, and increasing habitat complexity, and development of a productive, self-sustaining soil profile.</p> <p>This phase of rehabilitation may include specific vegetation management strategies and maintenance such as tree thinning, supplementary plantings and weed management.</p>
<b>Ecosystem and Land Use Establishment</b>	<p>This phase of rehabilitation consists of the processes to establish the approved final land use following construction of the final landform.</p> <p>For vegetated land uses this rehabilitation phase includes establishing the desired vegetation community and implementing land management activities such as weed control. This phase of rehabilitation may also include habitat augmentation such as installation of nest boxes.</p>
<b>Exploration</b>	<p>Has the same meaning as that term under the State Environmental Planning Policy (Mining,</p>

WORD	DEFINITION
	Petroleum Production and Extractive Industries) 2007.
<b>Final landform and rehabilitation plan</b>	As defined in the Mining Regulation 2016.
<b>Final land use</b>	As defined in the Mining Regulation 2016.
<b>Form and way</b>	Means the form and way approved by the Secretary. Approved form and way documents are available on the department's website.
<b>Growth Medium Development</b>	<p>This phase of rehabilitation consists of activities required to establish the physical, chemical and biological components of the substrate required to establish the desired vegetation community (including short lived pioneer species.</p> <p>This phase may include spreading the prepared landform with topsoil and/or subsoil and/or soil substitutes, applying soil ameliorants to enhance the physical, chemical and biological characteristics of the growth media, and actions to minimise loss of growth media due to erosion.</p>
<b>Habitat</b>	Has the same meaning as that term under the Biodiversity Conservation Act 2016 and the Fisheries Management Act 1994 (as relevant).
<b>Indicator</b>	An attribute of the biophysical environment (e.g. pH, topsoil depth, biomass) that can be used to approximate the progression of a biophysical process. It can be measured and audited to demonstrate (and track) the progress of an aspect of rehabilitation towards a desired completion

WORD	DEFINITION
	<p>criterion (i.e. defined end point). It may be aligned to an established protocol and used to evaluate changes in a system.</p>
<b>Land</b>	<p>As defined in the Mining Act 1992.</p>
<b>Landform Establishment</b>	<p>This phase of rehabilitation consists of the processes and activities required to construct the final landform.</p> <p>In addition to profiling the surface of rehabilitation areas to the approved final landform profile this phase may include works to construct surface water drainage features, encapsulate problematic materials such as tailings, and prepare a substrate with the desired physical and chemical characteristics (e.g. rock raking or ameliorating sodic materials).</p>
<b>Large mine</b>	<p>As defined in the Mining Regulation 2016.</p>
<b>Lease holder</b>	<p>The holder of a mining lease.</p>
<b>Life of mine</b>	<p>The timeframe of how long a mine is approved to mine, from commencement to closure.</p>
<b>Mine rehabilitation portal</b>	<p>Means the Resources Regulator's online portal that lease holders must use (via a registered account) to:</p>

WORD	DEFINITION
	<ul style="list-style-type: none"> <li>• upload rehabilitation geographical information system (GIS) spatial data</li> <li>• develop rehabilitation GIS spatial data (using online tracing functions)</li> <li>• generate rehabilitation plans and rehabilitation statistics using the map viewer and Rehabilitation Key Performance Indicator functionalities.</li> </ul> <p>Data submitted to the mine rehabilitation portal is collated in a centralised geodatabase for use by the Resources Regulator to regulate rehabilitation performance of lease holders.</p>
<b>Mining area</b>	As defined in the Mining Act 1992.
<b>Mining domain</b>	A land management unit with a discrete operational function (e.g. overburden emplacement), and therefore similar geophysical characteristics, that will require specific rehabilitation treatments to achieve the final land use(s).
<b>Mining land</b>	As defined in the Mining Act 1992.
<b>Native vegetation</b>	Has the same meaning as that term under section 60B of the Local Land Services Act 2013.
<b>Overburden</b>	Material overlying coal or a mineral deposit.
<b>Performance indicator</b>	An attribute of the biophysical environment (for example pH, slope, topsoil depth, biomass) that can be used to demonstrate achievement of a rehabilitation objective. It can be measured and audited to

WORD	DEFINITION
	<p>demonstrate (and track) the progress of an aspect of rehabilitation towards a desired completion criterion, that is, a defined end point. It may be aligned to an established protocol and used to evaluate changes in a system.</p>
<p><b>Phases of rehabilitation</b></p>	<p>The stages and sequences of actions required to rehabilitate disturbed land to achieve the final land use. The phases of rehabilitation are:</p> <ul style="list-style-type: none"> <li>• active mining</li> <li>• decommissioning</li> <li>• landform Establishment</li> <li>• growth medium development</li> <li>• landform Establishment</li> <li>• ecosystem and land use establishment</li> <li>• ecosystem and land use development</li> </ul>
<p><b>Progressive rehabilitation</b></p>	<p>The progress of rehabilitation towards achieving the approved rehabilitation completion criteria. This may be described in terms of domains, phases, performance indicators and rehabilitation completion criteria.</p>
<p><b>Rehabilitation Completion</b></p>	<p>The final phase of rehabilitation when a rehabilitation area has achieved the approved rehabilitation objectives and rehabilitation completion criteria for the final land use. Rehabilitation areas may be classified as complete when the Resources Regulator has determined in writing that the relevant</p>

WORD	DEFINITION
	rehabilitation obligations have been fulfilled following submission of <i>Form ESF2 Rehabilitation completion and/or review of rehabilitation cost estimate application</i> by the lease holder.
<b>Rehabilitation Completion criteria</b>	As defined in the Mining Regulation 2016.
<b>Rehabilitation cost estimate</b>	As defined in the Mining Regulation 2016.
<b>Rehabilitation management plan</b>	As defined in the Mining Regulation 2016.
<b>Rehabilitation objectives</b>	As defined in the Mining Regulation 2016.
<b>Rehabilitation risk assessment</b>	As defined in the Mining Regulation 2016.
<b>Rehabilitation schedule</b>	The defined timeframes for progressive rehabilitation set out in the forward program.
<b>Relevant stakeholders</b>	<p>Means any persons or bodies who may be affected by the mining operations, including rehabilitation, carried out on the lease land, and includes:</p> <ul style="list-style-type: none"> <li>• the relevant development consent authority</li> <li>• the local council</li> <li>• the relevant landholder(s)</li> <li>• community consultative committee (if required under the development consent) or equivalent</li> </ul>

WORD	DEFINITION
	<p>consultative group</p> <ul style="list-style-type: none"> <li>• affected land holder(s)</li> <li>• government agencies relevant to the final land use</li> <li>• affected infrastructure authorities (electricity, telecommunications, water, pipeline, road, rail authorities)</li> <li>• local Aboriginal communities, and</li> <li>• any other person or body determined by the Minister to be a relevant stakeholder in relation to a mining lease.</li> </ul>
<b>Risk</b>	The effect of uncertainty on objectives. It is measured in terms of consequences and likelihood (AS/NZS ISO 31000:2009).
<b>Secretary</b>	The Secretary of the department.
<b>Security deposit</b>	An amount that a mining lease holder is required to provide and maintain under a mining lease condition, to secure funding for the fulfilment of obligations under the lease (including obligations that may arise in the future).
<b>Surface disturbance</b>	Includes activities that disturb the surface of the mining area, including mining operations, ancillary mining activities and exploration.

WORD	DEFINITION
<b>Tailings</b>	A combination of the fine-grained solid material remaining after the recoverable metals and minerals have been extracted from the mined ore, and any process water <sup>2</sup> .
<b>Waste</b>	Has the same meaning as that term under the <i>Protection of the Environment Operations Act 1997</i> .

---

<sup>2</sup>Commonwealth of Australia (DITR), 2007. Tailings Management.

## **Attachment 3 - Plans**

20260105-1\_FP\_CCL\_2A\_Year1Forecast.pdf

20260105-1\_FP\_CCL\_2B\_Year2Forecast.pdf

20260105-1\_FP\_CCL\_2C\_Year3Forecast.pdf

**LEGEND**

**Disturbance Dec25**

Mining Domain Type

Water Management Area

**Rehabilitation Dec25**

Rehabilitation Phase

Decommissioning

Growth Media Development

Ecosystem and Land Use Establishment

Ecosystem and Land Use Development

**Project Approval Boundary**

Project Approval Boundary

**Current Authorisations**

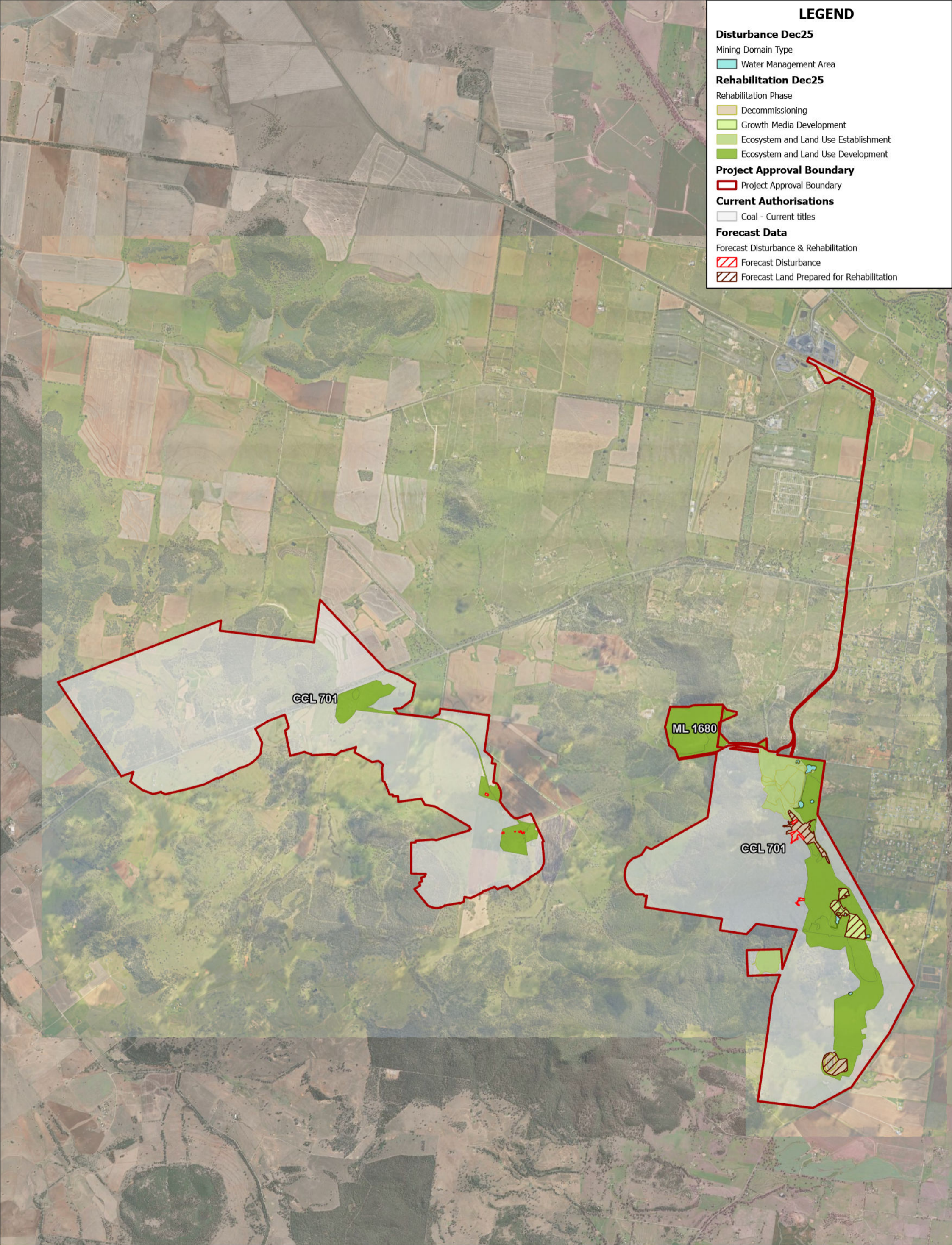
Coal - Current titles

**Forecast Data**

Forecast Disturbance & Rehabilitation

Forecast Disturbance

Forecast Land Prepared for Rehabilitation



# LEGEND

## Disturbance Dec25

Mining Domain Type

Other

Water Management Area

## Rehabilitation Dec25

Rehabilitation Phase

Decommissioning

Ecosystem and Land Use Establishment

Ecosystem and Land Use Development

## Project Approval Boundary

Project Approval Boundary

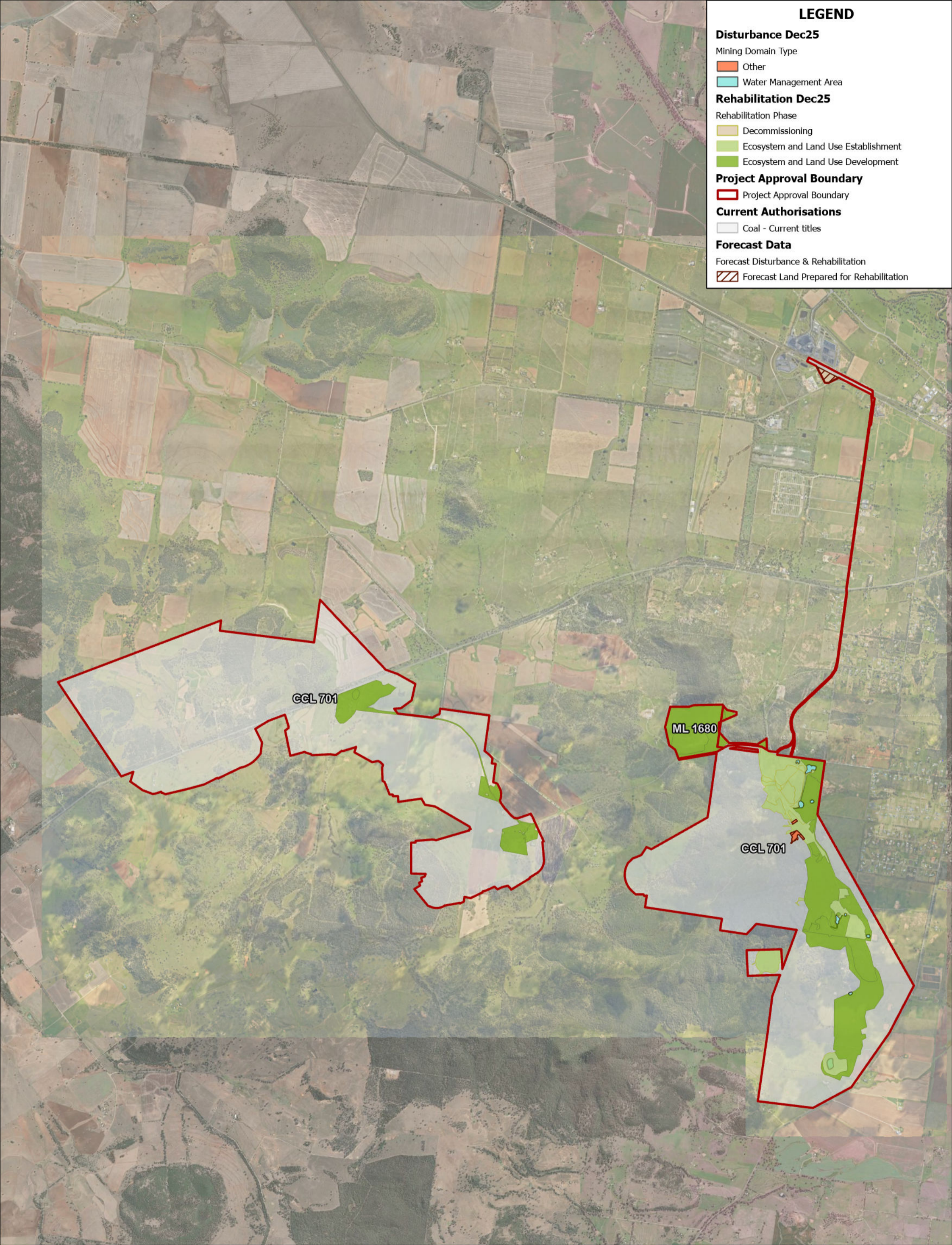
## Current Authorisations

Coal - Current titles

## Forecast Data

Forecast Disturbance & Rehabilitation

Forecast Land Prepared for Rehabilitation



Whitehaven

GIS Team - Brisbane

0 1 2km

Transverse Mercator Projection



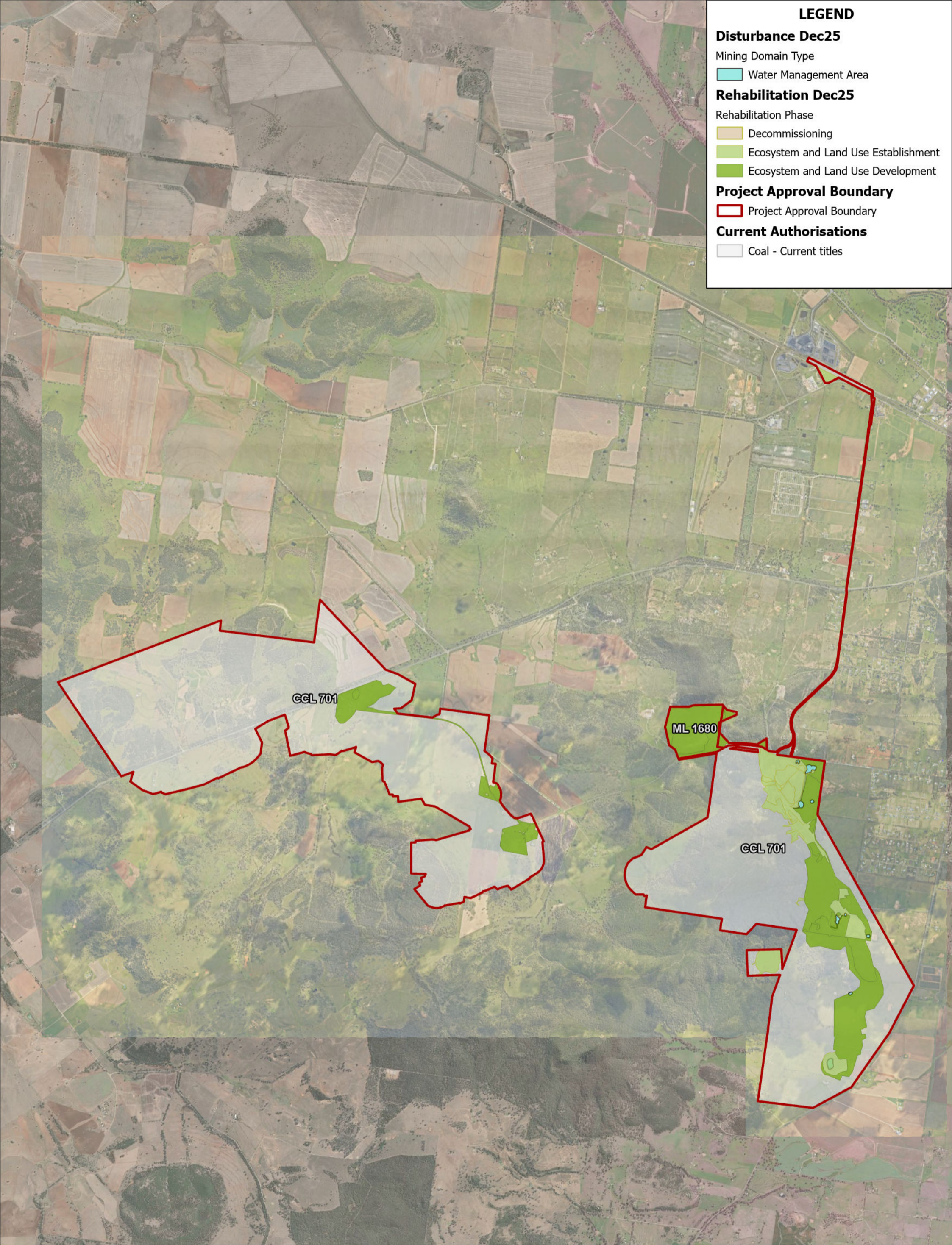
Gunnedah Colliery: Mining and rehabilitation three year forecast  
**Plan 2B: Mining and Rehabilitation – Year 2**  
Submission ID: Yr2 forecast - 11602, Project area boundary - 11506

Drawn: WHC GIS

Date: 27/02/2026

Service Layer Credits: Master Imagery Service Cache: Whitehaven  
Master Imagery Service: Whitehaven  
ESRI Imagery Basemap: Vantor

Filename: 20260105-1\_FP\_CCL\_2B\_Year2Forecast.aprx



**LEGEND**

**Disturbance Dec25**

Mining Domain Type

- Water Management Area

**Rehabilitation Dec25**

Rehabilitation Phase

- Decommissioning
- Ecosystem and Land Use Establishment
- Ecosystem and Land Use Development

**Project Approval Boundary**

- Project Approval Boundary

**Current Authorisations**

- Coal - Current titles

## Rehabilitation Cost Estimate Tool - Mining New South Wales

Whitehaven Coal Mining Limited - Gunnedah Colliery

### RCE Summary

#### SITE REGISTRATION

Complete the following fields prior to calculating the Security Deposit.

Date of Estimate	30-Dec-25	Mine Name	Gunnedah Colliery
Lease(s):	CCL701		
Lease Holder(s):	Whitehaven Coal Mining Limited		
Term of RCE:	31-Dec-26	This is period of time over which the RCE amount will apply.	
Date of last Security Deposit Review:	13-May-25	This is the date of the most recent correspondence from the Department advising of the assessed deposit amount.	
Amount of the last Security Deposit Review:	\$ 9,222,000.00	This is the most recent assessed deposit amount as per the most recent correspondence from the Department (see above).	
Current Security Deposit held by the Department:	\$ 9,222,000.00	This is the current security deposit amount held by the Department.	
List key changes since previous submission:	Earthworks and seeding complete for TSF and near complete for Melville Void		

#### COST SUMMARY

Mining Domain Type	Cost	Comments
<a href="#">Infrastructure Area</a>	\$ 127,556	Majority of rehab works complete
<a href="#">Infrastructure - Mine Entries</a>	\$ 3,745,986	
<a href="#">Beneficiation Facility</a>	\$ 413,679	
<a href="#">Tailings Storage Facilities</a>	\$ 285,002	Tailing area rehabilitation complete
<a href="#">Water Management Area</a>	\$ -	
<a href="#">Overburden Emplacement Area</a>	\$ -	
<a href="#">Active Mining Area (Open Cut Void)</a>	\$ 250,071	Allowance for Melville Void
<a href="#">Underground Mining Areas</a>	\$ -	
<a href="#">Exploration</a>	\$ -	
<b>Sub-total</b>	<b>\$ 4,822,294</b>	
<b>Additional Items</b>	<b>Cost</b>	
<a href="#">Other and Sundry</a>	\$ 576,916	
<b>Sub-total</b>	<b>\$ 576,916</b>	
<b>Totals</b>		
Subtotal - all except Exploration	\$ 5,399,210	
Subtotal - Exploration	\$ -	
<i>Subtotal - all</i>	<b>\$ 5,399,210</b>	
Contingency (Mining)	30% <input type="checkbox"/> User \$ 1,619,763	Enter reason here if contingency <b>greater</b> than default is entered
Contingency (Exploration only)	15% <input type="checkbox"/> \$ -	Enter reason here if contingency <b>greater</b> than default is entered
<b>Contingency Total</b>	<b>\$ 1,619,763</b>	
<b>Grand Total (excluding GST)</b>	<b>\$ 7,018,973</b>	

Contingency for mining activities ok  
Contingency for exploration activities ok