



WHITEHAVEN CHPP – MONTHLY MONITORING SUMMARY

Site Information

EPL No: 3637

EPA Website Link: <http://www.epa.nsw.gov.au/prpoeoapp/ViewPOEOLicence.aspx?DOCID=33514&SYSUID=1&LICID=3637>

Licensee: Whitehaven Coal Mining Limited

Licensee Address: Boggabri Road, Gunnedah NSW 2380

EPL Monitoring Points: See Figure 1 below

Sampling Period: November 2023

Obtained Date: 02nd January 2024

Publication Date: 02nd January 2024

Table 1 - No Pollutant Limits Apply

EPL ID	Pollutant	Units of Measure	Monitoring Frequency	No. of Measurements for the Month	Date Sampled	Date Obtained	Min Value	Mean Value	Median Value	Max or Only Value
3	Solid Particles	g/m ² /month	Continuous	1	16/11/2023	29/11/2023	-	-	-	1.1
11	PM ₁₀ Kendo	µg/m ³	Every 6 days	5	01/11/2023 07/11/2023 13/11/2023 19/11/2023 25/11/2023	11/12/2023 (Last sampled received)	2.2	13.82	13.8	22.6
12	PM ₁₀ Olive View	µg/m ³	Every 6 days	5	01/11/2023 07/11/2023 13/11/2023 19/11/2023 29/11/2023	02/01/2024 (Last sampled received)	3	13.3	15.9	18.3
6	Conductivity	µs/cm	Each overflow event	0	-	-	-	-	-	-
	Oil and Grease	mg/L					-	-	-	-
	Total Organic Carbon	mg/L					-	-	-	-
	Total Suspended Solids	mg/L					-	-	-	-
	pH	pH					-	-	-	-
7	Conductivity	µs/cm	Quarterly	1	01/11/2023	09/11/2023	-	-	-	1270
	Oil and Grease	mg/L					-	-	-	<5
	Total Organic Carbon	mg/L					-	-	-	4



WHITEHAVEN CHPP – MONTHLY MONITORING SUMMARY

EPL ID	Pollutant	Units of Measure	Monitoring Frequency	No. of Measurements for the Month	Date Sampled	Date Obtained	Min Value	Mean Value	Median Value	Max or Only Value
	Total Suspended Solids	mg/L					-	-	-	32
	pH	pH					-	-	-	8.40

Table 2 – Groundwater Monitoring (Quarterly – No Limits apply)

EPL ID	Pollutant	Units of Measure	Monitoring Frequency	No. of Samples for the Period	Date Sampled	Date Obtained	Min Value	Mean Value	Median Value	Max or Only Value
8	Ammonia	mg/L	Quarterly (P1)	1	30/11/2023	07/12/2023	-	-	-	0.06
	Bicarbonate	mg/L					-	-	-	1310
	Calcium	mg/L					-	-	-	52
	Chloride	mg/L					-	-	-	1980
	Conductivity	µs/cm					-	-	-	9750
	Lead	mg/L					-	-	-	<0.001
	Magnesium	mg/L					-	-	-	184
	Nitrate	mg/L					-	-	-	<0.01
	Potassium	mg/L					-	-	-	23
	Sodium	mg/L					-	-	-	2020
	Standing Water Level	m					-	-	-	6.09
	Sulphate	mg/L					-	-	-	1300
pH	pH	-	-	-	7.50					
9	Ammonia	mg/L	Quarterly (P2)	1	30/11/2023	07/12/2023	-	-	-	0.58
	Bicarbonate	mg/L					-	-	-	928
	Calcium	mg/L					-	-	-	229
	Chloride	mg/L					-	-	-	1090



WHITEHAVEN CHPP – MONTHLY MONITORING SUMMARY

EPL ID	Pollutant	Units of Measure	Monitoring Frequency	No. of Samples for the Period	Date Sampled	Date Obtained	Min Value	Mean Value	Median Value	Max or Only Value
	Conductivity	µs/cm					-	-	-	5910
	Lead	mg/L					-	-	-	<0.001
	Magnesium	mg/L					-	-	-	228
	Nitrate	mg/L					-	-	-	0.04
	Potassium	mg/L					-	-	-	109
	Sodium	mg/L					-	-	-	766
	Standing Water Level	M					-	-	-	1.64
	Sulphate	mg/L					-	-	-	715
	pH	pH					-	-	-	7.10
10	Ammonia	mg/L	Quarterly (P3)	1	30/11/2023	07/12/2023	-	-	-	0.61
	Bicarbonate	mg/L					-	-	-	753
	Calcium	mg/L					-	-	-	207
	Chloride	mg/L					-	-	-	1340
	Conductivity	µs/cm					-	-	-	5800
	Lead	mg/L					-	-	-	<0.001
	Magnesium	mg/L					-	-	-	219
	Nitrate	mg/L					-	-	-	0.02
	Potassium	mg/L					-	-	-	63
	Sodium	mg/L					-	-	-	691
	Standing Water Level	M					-	-	-	1.15
	Sulphate	mg/L					-	-	-	249
	pH	pH					-	-	-	7.20



WHITEHAVEN CHPP – MONTHLY MONITORING SUMMARY

Table 3 – Monitoring (Quarterly Noise – Limits Apply)

EPL ID	Date	Measurement Period	Measured levels – CHPP – dB(A)		Limit(s)- dB(A)	Wind speed (m/s)	Observations	(Potential) Non-compliance /breach
			LA1, 1 minute	LAeq, 15 minute				
N1	-	15 mins day	-	N/M	35	1.2 m/s NW	Site Noise: Inaudible Birds 40-61, Aircraft 45, Train 42	No
	-	15 mins evening	-	31	35	1.1 m/s S	Site Noise: Dozer Dog 45-47, Traffic 35-38, Train 57	
	-	15 mins night	-	<25	35	1.1 m/s S	Site Noise: General Activity Train 63, Insects 28-31, Traffic 30-34	
	-	1 min night	25	-	45	1.1 m/s S		

Notes:

dB(A): The overall level of a sound is usually expressed in terms of dBA, which is measured using a sound level meter with an “A-weighting” filter. This is an electronic filter having a frequency response corresponding approximately to that of human hearing.

LAeq, 15 minute: The A-weighted equivalent noise level (basically the average noise level). It is defined as the steady sound level that contains the same amount of acoustical energy as the corresponding time-varying sound, in this instance over a period of 15 minutes.

LA1, 1 minute: The noise level exceeded for 1% of the 15 minute interval.

I/A: When site noise is noted as inaudible (I/A), no site noise was audible at the monitoring location.

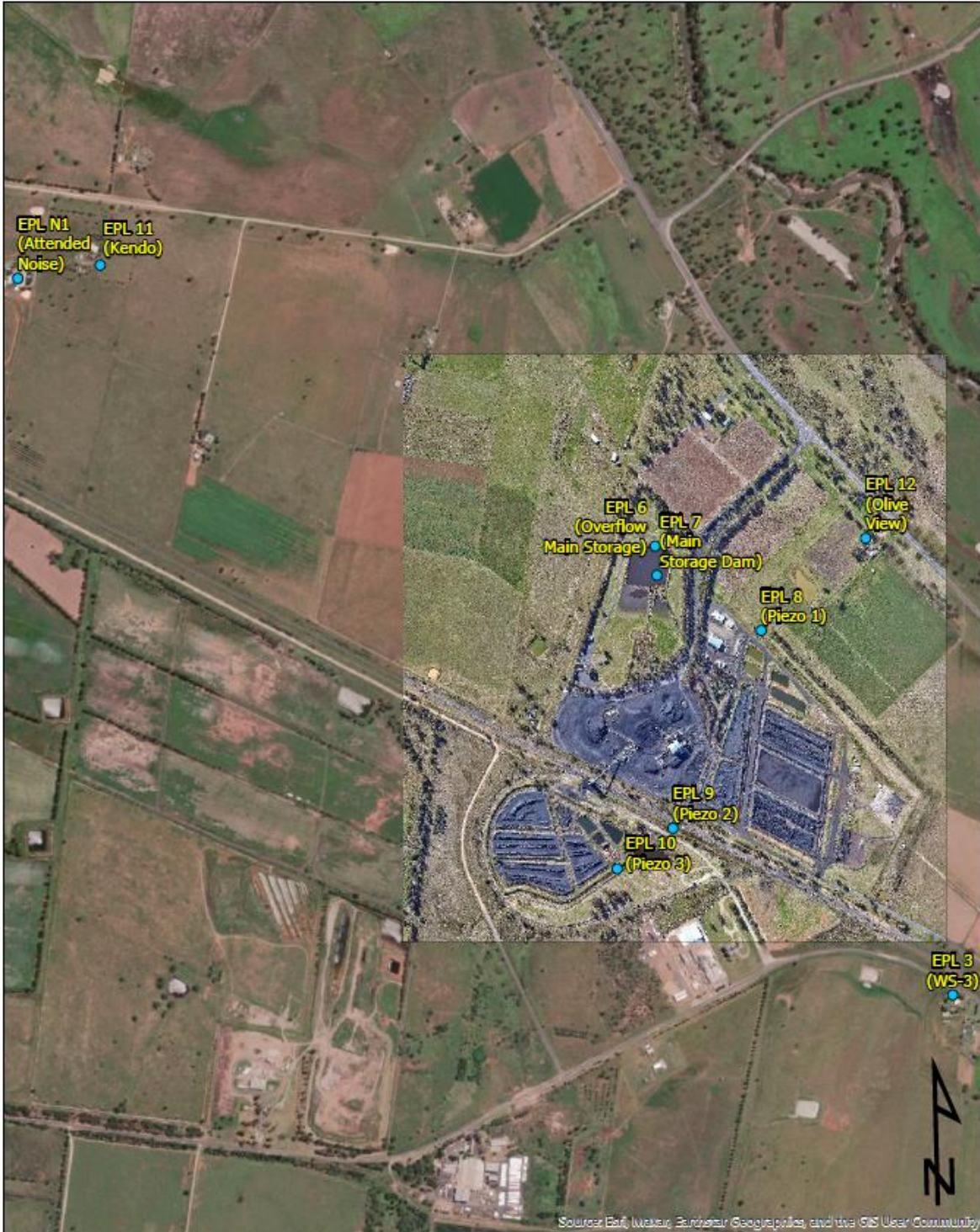
Not Measurable (NM): indicates that some site noise was audible, but indeterminate due to one of the following reasons:

- site noise levels were insignificant and unlikely, in many cases, to be even noticed; or
- site noise levels were masked by another relatively loud noise source, but were estimated to be less than LAeq 30 dB, which is insignificant in terms of any applicable criterion.



WHITEHAVEN COAL

WHITEHAVEN CHPP – MONTHLY MONITORING SUMMARY



 WHITEHAVEN COAL	<p align="center">Figure 1 Gunnedah CHPP EPL3637 Monitoring Locations</p>	<p>0 250 500  Meters</p>
<p>Datum MGA2020 Zone 56 Author O.Hulbert Image Nov-22 Date Jan-23 Size/Scale 1:13000</p>		<p> CHPP_EPL_Sites_Feb23</p>



WHITEHAVEN CHPP – MONTHLY MONITORING SUMMARY

CORRECTION LOG – November 2023

Month of EPL Monitoring	Sample point	Date of original publishing	Date of Correction	Date of Re-publishing	Correction/s made:
November 2023	12	15/12/2023	02/01/2024	02/01/2024	<ul style="list-style-type: none"> • Changed No. of samples for month. Original data: 4, corrected data: 5 • Added sample date 29/11/2023 • Changed mean value. Original data:12.65, corrected Data: 13.3 • Changed median value. Original data: 14.65, corrected Data: 15.9