



WHITEHAVEN CHPP – MONTHLY MONITORING SUMMARY

Site Information

EPL No: 3637

EPA Website Link: <http://www.epa.nsw.gov.au/prpoeoapp/ViewPOEOLicence.aspx?DOCID=33514&SYSUID=1&LICID=3637>

Licensee: Whitehaven Coal Mining Limited

Licensee Address: Boggabri Road, Gunnedah NSW 2380

EPL Monitoring Points: See Figure 1 below

Sampling Period: September 2023

Obtained Date: 12th October 2023

Publication Date: 13th October 2023

Table 1 - No Pollutant Limits Apply

EPL ID	Pollutant	Units of Measure	Monitoring Frequency	No. of Measurements for the Month	Date Sampled	Date Obtained	Min Value	Mean Value	Median Value	Max or Only Value
3	Solid Particles	g/m ² /month	Continuous	1	15/09/2023	12/10/2023	-	-	-	0.8
11	PM ₁₀ Kendo	µg/m ³	Every 6 days	5	02/09/2023 08/09/2023 14/09/2023 20/09/2023 26/09/2023	12/10/2023 (Last sampled received)	4.5	26.6	19.6	45.8
12	PM ₁₀ Olive View	µg/m ³	Every 6 days	5	02/09/2023 08/09/2023 14/09/2023 20/09/2023 26/09/2023	12/10/2023 (Last sampled received)	5.2	10.7	9.5	18.8
6	Conductivity	µs/cm	Each overflow event	0	-	-	-	-	-	-
	Oil and Grease	mg/L					-	-	-	-
	Total Organic Carbon	mg/L					-	-	-	-
	Total Suspended Solids	mg/L					-	-	-	-
	pH	pH					-	-	-	-
7	Conductivity	µs/cm	Quarterly	0	-	-	-	-	-	-
	Oil and Grease	mg/L					-	-	-	-
	Total Organic Carbon	mg/L					-	-	-	-



WHITEHAVEN CHPP – MONTHLY MONITORING SUMMARY

EPL ID	Pollutant	Units of Measure	Monitoring Frequency	No. of Measurements for the Month	Date Sampled	Date Obtained	Min Value	Mean Value	Median Value	Max or Only Value
	Total Suspended Solids	mg/L					-	-	-	-
	pH	pH					-	-	-	-

Table 2 – Groundwater Monitoring (Quarterly – No Limits apply)

EPL ID	Pollutant	Units of Measure	Monitoring Frequency	No. of Samples for the Period	Date Sampled	Date Obtained	Min Value	Mean Value	Median Value	Max or Only Value
8	Ammonia	mg/L	Quarterly (P1)	1	06/09/2023	15/09/2023	-	-	-	0.02
	Bicarbonate	mg/L					-	-	-	1240
	Calcium	mg/L					-	-	-	62
	Chloride	mg/L					-	-	-	1790
	Conductivity	µs/cm					-	-	-	9640
	Lead	mg/L					-	-	-	0.004
	Magnesium	mg/L					-	-	-	193
	Nitrate	mg/L					-	-	-	0.35
	Potassium	mg/L					-	-	-	27
	Sodium	mg/L					-	-	-	2160
	Standing Water Level	m					-	-	-	4.97
	Sulphate	mg/L					-	-	-	1380
pH	pH	-	-	-	7.5					
9	Ammonia	mg/L	Quarterly (P2)	1	06/09/2023	15/09/2023	-	-	-	0.42
	Bicarbonate	mg/L					-	-	-	890
	Calcium	mg/L					-	-	-	277
	Chloride	mg/L					-	-	-	1040



WHITEHAVEN CHPP – MONTHLY MONITORING SUMMARY

EPL ID	Pollutant	Units of Measure	Monitoring Frequency	No. of Samples for the Period	Date Sampled	Date Obtained	Min Value	Mean Value	Median Value	Max or Only Value
	Conductivity	µs/cm					-	-	-	5920
	Lead	mg/L					-	-	-	<0.001
	Magnesium	mg/L					-	-	-	239
	Nitrate	mg/L					-	-	-	0.18
	Potassium	mg/L					-	-	-	125
	Sodium	mg/L					-	-	-	718
	Standing Water Level	m					-	-	-	0.43
	Sulphate	mg/L					-	-	-	629
	pH	pH					-	-	-	7.2
10	Ammonia	mg/L	Quarterly (P3)	1	06/09/2023	15/09/2023	-	-	-	0.05
	Bicarbonate	mg/L					-	-	-	705
	Calcium	mg/L					-	-	-	235
	Chloride	mg/L					-	-	-	1290
	Conductivity	µs/cm					-	-	-	5810
	Lead	mg/L					-	-	-	<0.001
	Magnesium	mg/L					-	-	-	224
	Nitrate	mg/L					-	-	-	66
	Potassium	mg/L					-	-	-	62
	Sodium	mg/L					-	-	-	716
	Standing Water Level	m					-	-	-	0.37
	Sulphate	mg/L					-	-	-	268
	pH	pH					-	-	-	7.1



WHITEHAVEN CHPP – MONTHLY MONITORING SUMMARY

Table 3 – Monitoring (Quarterly Noise – Limits Apply)

EPL ID	Date	Measurement Period	Measured levels – CHPP – dB(A)		Limit(s)- dB(A)	Wind speed (m/s)	Observations	(Potential) Non-compliance /breach
			LA1, 1 minute	LAeq, 15 minute				
N1	14/09/2023	15 mins day	-	N/M	35	2.9m/s East	General site activity barely audible, wind, birds, traffic, aircraft	No
	14/09/2023	15 mins evening	-	30	35	1.6m/s South-East	General site activity 29-32dBA, dogs, insects, traffic, impact	
		15 mins night	-	33	35	2.0m/s East	General site activity, Dozer operations, dogs, and traffic	
		1 min night	38	-	45	2.0m/s East		

Notes:

dB(A): The overall level of a sound is usually expressed in terms of dBA, which is measured using a sound level meter with an “A-weighting” filter. This is an electronic filter having a frequency response corresponding approximately to that of human hearing.

LAeq, 15 minute: The A-weighted equivalent noise level (basically the average noise level). It is defined as the steady sound level that contains the same amount of acoustical energy as the corresponding time-varying sound, in this instance over a period of 15 minutes.

LA1, 1 minute: The noise level exceeded for 1% of the 15 minute interval.

I/A: When site noise is noted as inaudible (I/A), no site noise was audible at the monitoring location.

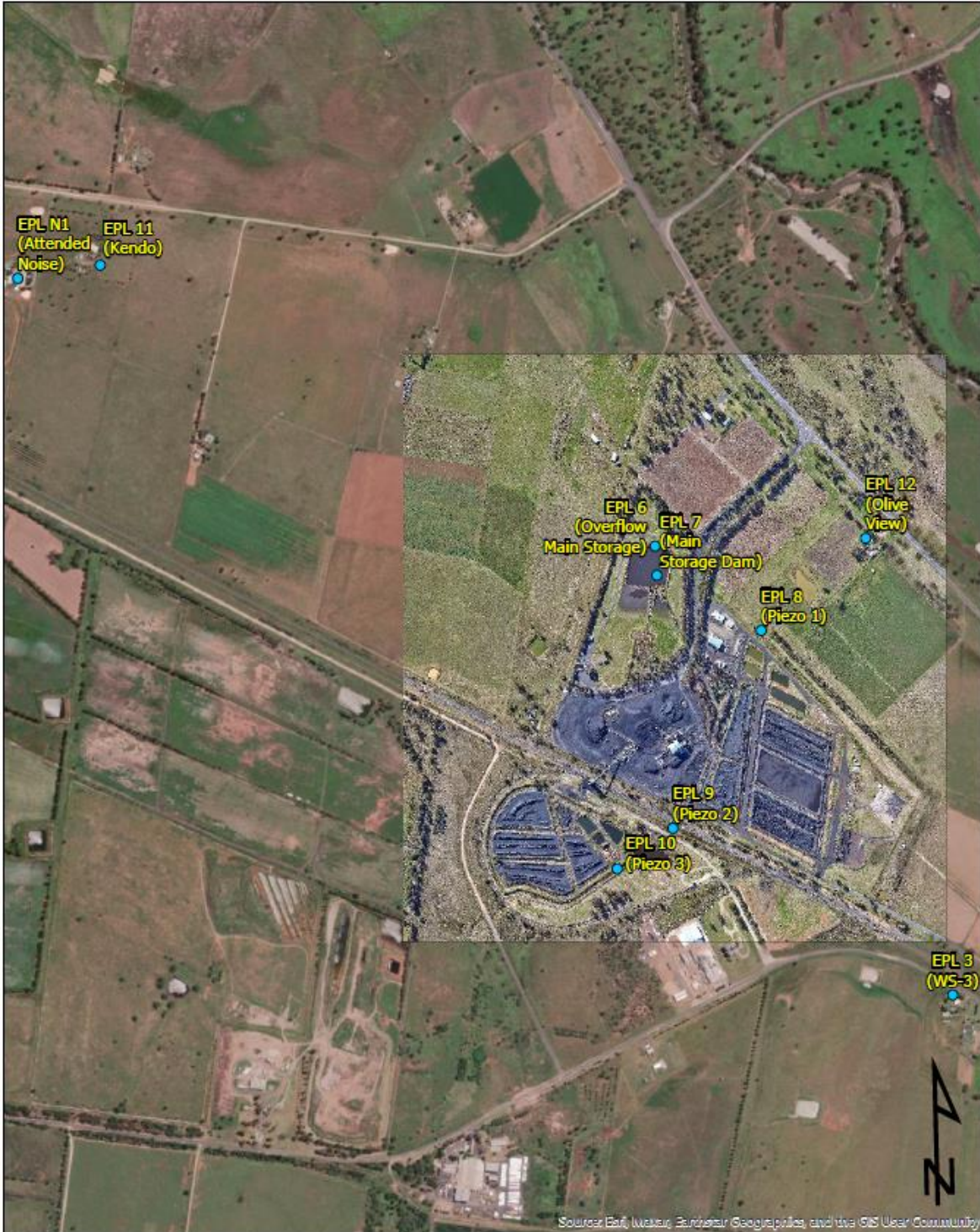
Not Measurable (NM): indicates that some site noise was audible, but indeterminate due to one of the following reasons:

- site noise levels were insignificant and unlikely, in many cases, to be even noticed; or
- site noise levels were masked by another relatively loud noise source, but were estimated to be less than LAeq 30 dB, which is insignificant in terms of any applicable criterion.



WHITEHAVEN COAL

WHITEHAVEN CHPP – MONTHLY MONITORING SUMMARY



 WHITEHAVEN COAL	<p align="center">Figure 1 Gunnedah CHPP EPL3637 Monitoring Locations</p>	<p>0 250 500 ─────────── Meters</p>
<p>Datum MGA2020 Zone 56 Author O.Hulbert Image Nov-22 Date Jan-23 Size/Scale 1:13000</p>		<p>● CHPP_EPL_Sites_Feb23</p>