



WHITEHAVEN CHPP – MONTHLY MONITORING SUMMARY

Site Information

EPL No: 3637

EPA Website Link: <http://www.epa.nsw.gov.au/prpoeoapp/ViewPOEOLicence.aspx?DOCID=33514&SYSUID=1&LICID=3637>

Licensee: Whitehaven Coal Mining Limited

Licensee Address: Boggabri Road, Gunnedah NSW 2380

EPL Monitoring Points: See Figure 1 below

Sampling Period: March 2023

Obtained Date: 21st April 2023

Publication Date: 21st April 2023

Table 1 - No Pollutant Limits Apply

EPL ID	Pollutant	Units of Measure	Monitoring Frequency	No. of Measurements for the Month	Date Sampled	Date Obtained	Min Value	Mean Value	Median Value	Max or Only Value
3	Solid Particles	g/m ² /month	Continuous	1	17/03/2023	21/04/2023	-	-	-	2.3
11	PM ₁₀ Kendo	µg/m ³	Every 6 days	5	06/03/2023 12/03/2023 18/03/2023 24/03/2023 30/03/2023	15/04/2023 (Last sampled received)	5.9	17.4	6.5	50.7
12	PM ₁₀ Olive View	µg/m ³	Every 6 days	5	06/03/2023 12/03/2023 18/03/2023 24/03/2023 30/03/2023	15/04/2023 (Last sampled received)	1.8	6.54	6.3	13
6	Conductivity	µs/cm	Each overflow event	2	25/03/2023 29/03/2023	31/03/2023	714	773	772.5	831
	Oil and Grease	mg/L					<5	<5	<5	<5
	Total Organic Carbon	mg/L					7	9	9	11
	Total Suspended Solids	mg/L					17	25	25	33
	pH	pH					7.35	7.86	7.86	8.36
7	Conductivity	µs/cm	Quarterly	0	-	-	-	-	-	-
	Oil and Grease	mg/L					-	-	-	-
	Total Organic Carbon	mg/L					-	-	-	-



WHITEHAVEN CHPP – MONTHLY MONITORING SUMMARY

EPL ID	Pollutant	Units of Measure	Monitoring Frequency	No. of Measurements for the Month	Date Sampled	Date Obtained	Min Value	Mean Value	Median Value	Max or Only Value
	Total Suspended Solids	mg/L					-	-	-	-
	pH	pH					-	-	-	-

Table 2 – Groundwater Monitoring (Quarterly – No Limits apply)

EPL ID	Pollutant	Units of Measure	Monitoring Frequency	No. of Samples for the Period	Date Sampled	Date Obtained	Min Value	Mean Value	Median Value	Max or Only Value
8	Ammonia	mg/L	Quarterly (P1)	0	-	-	-	-	-	-
	Bicarbonate	mg/L					-	-	-	-
	Calcium	mg/L					-	-	-	-
	Chloride	mg/L					-	-	-	-
	Conductivity	µs/cm					-	-	-	-
	Lead	mg/L					-	-	-	-
	Magnesium	mg/L					-	-	-	-
	Nitrate	mg/L					-	-	-	-
	Potassium	mg/L					-	-	-	-
	Sodium	mg/L					-	-	-	-
	Standing Water Level	m					-	-	-	-
	Sulphate	mg/L					-	-	-	-
	pH	pH					-	-	-	-
9	Ammonia	mg/L	Quarterly (P2)	0	-	-	-	-	-	-
	Bicarbonate	mg/L					-	-	-	-
	Calcium	mg/L					-	-	-	-
	Chloride	mg/L					-	-	-	-



WHITEHAVEN CHPP – MONTHLY MONITORING SUMMARY

EPL ID	Pollutant	Units of Measure	Monitoring Frequency	No. of Samples for the Period	Date Sampled	Date Obtained	Min Value	Mean Value	Median Value	Max or Only Value
	Conductivity	µs/cm					-	-	-	-
	Lead	mg/L					-	-	-	-
	Magnesium	mg/L					-	-	-	-
	Nitrate	mg/L					-	-	-	-
	Potassium	mg/L					-	-	-	-
	Sodium	mg/L					-	-	-	-
	Standing Water Level	m					-	-	-	-
	Sulphate	mg/L					-	-	-	-
	pH	pH					-	-	-	-
10	Ammonia	mg/L	Quarterly (P3)	0	-	-	-	-	-	-
	Bicarbonate	mg/L					-	-	-	-
	Calcium	mg/L					-	-	-	-
	Chloride	mg/L					-	-	-	-
	Conductivity	µs/cm					-	-	-	-
	Lead	mg/L					-	-	-	-
	Magnesium	mg/L					-	-	-	-
	Nitrate	mg/L					-	-	-	-
	Potassium	mg/L					-	-	-	-
	Sodium	mg/L					-	-	-	-
	Standing Water Level	m					-	-	-	-
	Sulphate	mg/L					-	-	-	-
	pH	pH					-	-	-	-



WHITEHAVEN CHPP – MONTHLY MONITORING SUMMARY

Table 3 – Monitoring (Quarterly Noise – Limits Apply)

EPL ID	Date	Measurement Period	Measured levels – CHPP – dB(A)		Limit(s)- dB(A)	Wind speed (m/s)	Observations	(Potential) Non-compliance /breach
			LA1, 1 minute	LAeq, 15 minute				
N1	31/03/2023	15 mins day	-	30	35	Calm	Traffic, birds, dozer operations	No
	30/03/2023	15 mins evening	-	31	35	1.3	Train, insects, traffic dozer engine revs and track slap	
		15 mins night	-	<25	35	1.5	Traffic, insects, animals and train. General site activity faintly audible, onsite horn.	
		1 min night	41	-	45	1.5		

Notes:

dB(A): The overall level of a sound is usually expressed in terms of dBA, which is measured using a sound level meter with an “A-weighting” filter. This is an electronic filter having a frequency response corresponding approximately to that of human hearing.

LAeq, 15 minute: The A-weighted equivalent noise level (basically the average noise level). It is defined as the steady sound level that contains the same amount of acoustical energy as the corresponding time-varying sound, in this instance over a period of 15 minutes.

LA1, 1 minute: The noise level exceeded for 1% of the 15 minute interval.

I/A: When site noise is noted as inaudible (I/A), no site noise was audible at the monitoring location.

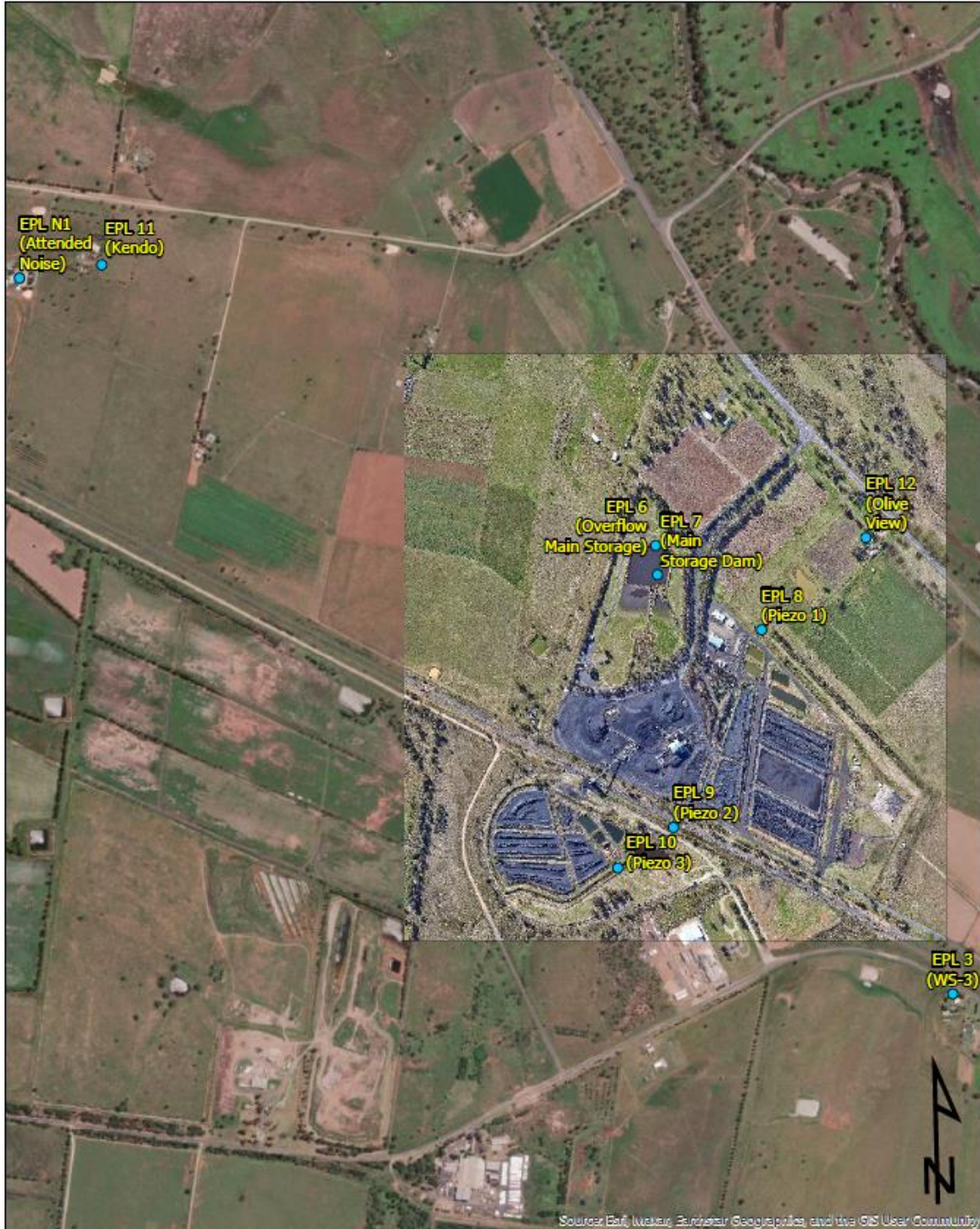
Not Measurable (NM): indicates that some site noise was audible, but indeterminate due to one of the following reasons:

- site noise levels were insignificant and unlikely, in many cases, to be even noticed; or
- site noise levels were masked by another relatively loud noise source, but were estimated to be less than LAeq 30 dB, which is insignificant in terms of any applicable criterion.



WHITEHAVEN COAL

WHITEHAVEN CHPP – MONTHLY MONITORING SUMMARY



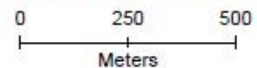
Source: EIT, Water, Earthair Geographics, and the GIS User Community

 **WHITEHAVEN COAL**

Datum MGA2020 Zone 56 Author O.Hulbert

Image Nov-22 Date Jan-23 Size/Scale 1:13000

Figure 1
Gunnedah CHPP EPL3637
Monitoring Locations



● CHPP_EPL_Sites_Feb23