



WHITEHAVEN CHPP – MONTHLY MONITORING SUMMARY

Site Information

EPL No: 3637

EPA Website Link: <http://www.epa.nsw.gov.au/prpoeoapp/ViewPOEOLicence.aspx?DOCID=33514&SYSUID=1&LICID=3637>

Licensee: Whitehaven Coal Mining Limited

Licensee Address: Boggabri Road, Gunnedah NSW 2380

EPL Monitoring Points: See Figure 1 below

Sampling Period: January 2024

Obtained Date: 16th February 2024

Publication Date: 21st February 2024

Table 1 - No Pollutant Limits Apply

| EPL ID | Pollutant | Units of Measure | Monitoring Frequency | No. of Measurements for the Month | Date Sampled | Date Obtained | Min Value | Mean Value | Median Value | Max or Only Value |
|--------|--------------------------------|-------------------------|----------------------|-----------------------------------|--|---------------------------------------|-----------|------------|--------------|-------------------|
| 3 | Solid Particles | g/m ² /month | Continuous | 1 | 17/01/2024 | 16/02/2024 | - | - | - | 11.8 |
| 11 | PM ₁₀ Kendo | µg/m ³ | Every 6 days | 5 | 06/01/2024 12/01/2024 18/01/2024 24/01/2024 30/01/2024 | 09/02/2024 (Last sampled received) | 5.4 | 8.3 | 5.5 | 12.8 |
| 12 | PM ₁₀ Olive View | µg/m ³ | Every 6 days | 5 | 06/01/2024 12/01/2024 18/01/2024 24/01/2024 30/01/2024 | 09/02/2024 (Last sampled received) | 5.5 | 9.76 | 11.6 | 13.0 |
| 6 | Conductivity | µs/cm | Each overflow event | 0 | - | - | - | - | - | - |
| | Oil and Grease | mg/L | | | | | - | - | - | - |
| | Total Organic Carbon | mg/L | | | | | - | - | - | - |
| | Total Suspended Solids | mg/L | | | | | - | - | - | - |
| | pH | pH | | | | | - | - | - | - |
| 7 | Conductivity | µs/cm | Quarterly | 0 | | | - | - | - | - |
| | Oil and Grease | mg/L | | | | | - | - | - | - |
| | Total Organic Carbon | mg/L | | | | | - | - | - | - |



WHITEHAVEN CHPP – MONTHLY MONITORING SUMMARY

| EPL ID | Pollutant | Units of Measure | Monitoring Frequency | No. of Measurements for the Month | Date Sampled | Date Obtained | Min Value | Mean Value | Median Value | Max or Only Value |
|--------|------------------------|------------------|----------------------|-----------------------------------|--------------|---------------|-----------|------------|--------------|-------------------|
| | Total Suspended Solids | mg/L | | | | | - | - | - | - |
| | pH | pH | | | | | - | - | - | - |

Table 2 – Groundwater Monitoring (Quarterly – No Limits apply)

| EPL ID | Pollutant | Units of Measure | Monitoring Frequency | No. of Samples for the Period | Date Sampled | Date Obtained | Min Value | Mean Value | Median Value | Max or Only Value |
|--------|----------------------|------------------|----------------------|-------------------------------|--------------|---------------|-----------|------------|--------------|-------------------|
| 8 | Ammonia | mg/L | Quarterly (P1) | 0 | | | - | - | - | - |
| | Bicarbonate | mg/L | | | | | - | - | - | - |
| | Calcium | mg/L | | | | | - | - | - | - |
| | Chloride | mg/L | | | | | - | - | - | - |
| | Conductivity | µs/cm | | | | | - | - | - | - |
| | Lead | mg/L | | | | | - | - | - | - |
| | Magnesium | mg/L | | | | | - | - | - | - |
| | Nitrate | mg/L | | | | | - | - | - | - |
| | Potassium | mg/L | | | | | - | - | - | - |
| | Sodium | mg/L | | | | | - | - | - | - |
| | Standing Water Level | m | | | | | - | - | - | - |
| | Sulphate | mg/L | | | | | - | - | - | - |
| | pH | pH | | | | | - | - | - | - |
| 9 | Ammonia | mg/L | Quarterly (P2) | 0 | | | - | - | - | - |
| | Bicarbonate | mg/L | | | | | - | - | - | - |
| | Calcium | mg/L | | | | | - | - | - | - |
| | Chloride | mg/L | | | | | - | - | - | - |



WHITEHAVEN COAL

WHITEHAVEN CHPP – MONTHLY MONITORING SUMMARY

| EPL ID | Pollutant | Units of Measure | Monitoring Frequency | No. of Samples for the Period | Date Sampled | Date Obtained | Min Value | Mean Value | Median Value | Max or Only Value |
|--------|----------------------|------------------|----------------------|-------------------------------|--------------|---------------|-----------|------------|--------------|-------------------|
| | Conductivity | µs/cm | | | | | - | - | - | - |
| | Lead | mg/L | | | | | - | - | - | - |
| | Magnesium | mg/L | | | | | - | - | - | - |
| | Nitrate | mg/L | | | | | - | - | - | - |
| | Potassium | mg/L | | | | | - | - | - | - |
| | Sodium | mg/L | | | | | - | - | - | - |
| | Standing Water Level | M | | | | | - | - | - | - |
| | Sulphate | mg/L | | | | | - | - | - | - |
| | pH | pH | | | | | - | - | - | - |
| 10 | Ammonia | mg/L | Quarterly (P3) | 0 | | | - | - | - | - |
| | Bicarbonate | mg/L | | | | | - | - | - | - |
| | Calcium | mg/L | | | | | - | - | - | - |
| | Chloride | mg/L | | | | | - | - | - | - |
| | Conductivity | µs/cm | | | | | - | - | - | - |
| | Lead | mg/L | | | | | - | - | - | - |
| | Magnesium | mg/L | | | | | - | - | - | - |
| | Nitrate | mg/L | | | | | - | - | - | - |
| | Potassium | mg/L | | | | | - | - | - | - |
| | Sodium | mg/L | | | | | - | - | - | - |
| | Standing Water Level | M | | | | | - | - | - | - |
| | Sulphate | mg/L | | | | | - | - | - | - |
| | pH | pH | | | | | - | - | - | - |



WHITEHAVEN CHPP – MONTHLY MONITORING SUMMARY

Table 3 – Monitoring (Quarterly Noise – Limits Apply)

| EPL ID | Date | Measurement Period | Measured levels – CHPP – dB(A) | | Limit(s)- dB(A) | Wind speed (m/s) | Observations | (Potential) Non-compliance /breach |
|--------|------|--------------------|--------------------------------|-----------------|-----------------|------------------|--------------|------------------------------------|
| | | | LA1, 1 minute | LAeq, 15 minute | | | | |
| N1 | - | 15 mins day | - | | 35 | | | |
| | - | 15 mins evening | - | | 35 | | | |
| | - | 15 mins night | - | | 35 | | | |
| | - | 1 min night | | - | 45 | | | |

Notes:

dB(A): The overall level of a sound is usually expressed in terms of dBA, which is measured using a sound level meter with an “A-weighting” filter. This is an electronic filter having a frequency response corresponding approximately to that of human hearing.

LAeq, 15 minute: The A-weighted equivalent noise level (basically the average noise level). It is defined as the steady sound level that contains the same amount of acoustical energy as the corresponding time-varying sound, in this instance over a period of 15 minutes.

LA1, 1 minute: The noise level exceeded for 1% of the 15 minute interval.

I/A: When site noise is noted as inaudible (I/A), no site noise was audible at the monitoring location.

Not Measurable (NM): indicates that some site noise was audible, but indeterminate due to one of the following reasons:


- site noise levels were insignificant and unlikely, in many cases, to be even noticed; or
- site noise levels were masked by another relatively loud noise source, but were estimated to be less than LAeq 30 dB, which is insignificant in terms of any applicable criterion.



WHITEHAVEN COAL

WHITEHAVEN CHPP – MONTHLY MONITORING SUMMARY



| | | |
|---|--|---|
|  WHITEHAVEN COAL | <p align="center">Figure 1 Gunnedah CHPP EPL3637 Monitoring Locations</p> | <p>0 250 500 ————— Meters</p> |
| <p>Datum MGA2020 Zone 56 Author O.Hulbert Image Nov-22 Date Jan-23 Size/Scale 1:13000</p> | | <p>● CHPP_EPL_Sites_Feb23</p> |



WHITEHAVEN CHPP – MONTHLY MONITORING SUMMARY

Site Information

EPL No: 3637

EPA Website Link: <http://www.epa.nsw.gov.au/prpoeoapp/ViewPOEOLicence.aspx?DOCID=33514&SYSUID=1&LICID=3637>

Licensee: Whitehaven Coal Mining Limited

Licensee Address: Boggabri Road, Gunnedah NSW 2380

EPL Monitoring Points: See Figure 1 below

Sampling Period: February 2024

Obtained Date: 19th March 2024

Publication Date: 20th March 2024

Table 1 - No Pollutant Limits Apply

| EPL ID | Pollutant | Units of Measure | Monitoring Frequency | No. of Measurements for the Month | Date Sampled | Date Obtained | Min Value | Mean Value | Median Value | Max or Only Value |
|--------|--------------------------------|-------------------------|----------------------|-----------------------------------|--|---------------------------------------|-----------|------------|--------------|-------------------|
| 3 | Solid Particles | g/m ² /month | Continuous | 1 | 16/02/2024 | 19/03/2024 | - | - | - | 4.5 |
| 11 | PM ₁₀ Kendo | µg/m ³ | Every 6 days | 5 | 05/02/2024 11/02/2024 17/02/2024 23/02/2024 29/02/2024 | 13/03/2024 (Last sampled received) | 3.5 | 12.24 | 6.8 | 35.3 |
| 12 | PM ₁₀ Olive View | µg/m ³ | Every 6 days | 5 | 05/02/2024 11/02/2024 17/02/2024 23/02/2024 29/02/2024 | 13/03/2024 (Last sampled received) | 4.8 | 12.02 | 10.4 | 25.2 |
| 6 | Conductivity | µs/cm | Each overflow event | 0 | - | - | - | - | - | - |
| | Oil and Grease | mg/L | | | | | - | - | - | - |
| | Total Organic Carbon | mg/L | | | | | - | - | - | - |
| | Total Suspended Solids | mg/L | | | | | - | - | - | - |
| | pH | pH | | | | | - | - | - | - |
| 7 | Conductivity | µs/cm | Quarterly | 1 | 05/02/2024 | 14/02/2024 | - | - | - | 1290 |
| | Oil and Grease | mg/L | | | | | - | - | - | <5 |
| | Total Organic Carbon | mg/L | | | | | - | - | - | 4 |



WHITEHAVEN CHPP – MONTHLY MONITORING SUMMARY

| EPL ID | Pollutant | Units of Measure | Monitoring Frequency | No. of Measurements for the Month | Date Sampled | Date Obtained | Min Value | Mean Value | Median Value | Max or Only Value |
|--------|------------------------|------------------|----------------------|-----------------------------------|--------------|---------------|-----------|------------|--------------|-------------------|
| | Total Suspended Solids | mg/L | | | | | - | - | - | 13 |
| | pH | pH | | | | | - | - | - | 8.30 |

Table 2 – Groundwater Monitoring (Quarterly – No Limits apply)

| EPL ID | Pollutant | Units of Measure | Monitoring Frequency | No. of Samples for the Period | Date Sampled | Date Obtained | Min Value | Mean Value | Median Value | Max or Only Value |
|--------|----------------------|------------------|----------------------|-------------------------------|--------------|---------------|-----------|------------|--------------|-------------------|
| 8 | Ammonia | mg/L | Quarterly (P1) | 0 | | | - | - | - | - |
| | Bicarbonate | mg/L | | | | | - | - | - | - |
| | Calcium | mg/L | | | | | - | - | - | - |
| | Chloride | mg/L | | | | | - | - | - | - |
| | Conductivity | µs/cm | | | | | - | - | - | - |
| | Lead | mg/L | | | | | - | - | - | - |
| | Magnesium | mg/L | | | | | - | - | - | - |
| | Nitrate | mg/L | | | | | - | - | - | - |
| | Potassium | mg/L | | | | | - | - | - | - |
| | Sodium | mg/L | | | | | - | - | - | - |
| | Standing Water Level | m | | | | | - | - | - | - |
| | Sulphate | mg/L | | | | | - | - | - | - |
| | pH | pH | | | | | - | - | - | - |
| 9 | Ammonia | mg/L | Quarterly (P2) | 0 | | | - | - | - | - |
| | Bicarbonate | mg/L | | | | | - | - | - | - |
| | Calcium | mg/L | | | | | - | - | - | - |
| | Chloride | mg/L | | | | | - | - | - | - |



WHITEHAVEN COAL

WHITEHAVEN CHPP – MONTHLY MONITORING SUMMARY

| EPL ID | Pollutant | Units of Measure | Monitoring Frequency | No. of Samples for the Period | Date Sampled | Date Obtained | Min Value | Mean Value | Median Value | Max or Only Value |
|--------|----------------------|------------------|----------------------|-------------------------------|--------------|---------------|-----------|------------|--------------|-------------------|
| | Conductivity | µs/cm | | | | | - | - | - | - |
| | Lead | mg/L | | | | | - | - | - | - |
| | Magnesium | mg/L | | | | | - | - | - | - |
| | Nitrate | mg/L | | | | | - | - | - | - |
| | Potassium | mg/L | | | | | - | - | - | - |
| | Sodium | mg/L | | | | | - | - | - | - |
| | Standing Water Level | M | | | | | - | - | - | - |
| | Sulphate | mg/L | | | | | - | - | - | - |
| | pH | pH | | | | | - | - | - | - |
| 10 | Ammonia | mg/L | Quarterly (P3) | 0 | | | - | - | - | - |
| | Bicarbonate | mg/L | | | | | - | - | - | - |
| | Calcium | mg/L | | | | | - | - | - | - |
| | Chloride | mg/L | | | | | - | - | - | - |
| | Conductivity | µs/cm | | | | | - | - | - | - |
| | Lead | mg/L | | | | | - | - | - | - |
| | Magnesium | mg/L | | | | | - | - | - | - |
| | Nitrate | mg/L | | | | | - | - | - | - |
| | Potassium | mg/L | | | | | - | - | - | - |
| | Sodium | mg/L | | | | | - | - | - | - |
| | Standing Water Level | M | | | | | - | - | - | - |
| | Sulphate | mg/L | | | | | - | - | - | - |
| | pH | pH | | | | | - | - | - | - |



WHITEHAVEN CHPP – MONTHLY MONITORING SUMMARY

Table 3 – Monitoring (Quarterly Noise – Limits Apply)

| EPL ID | Date | Measurement Period | Measured levels – CHPP – dB(A) | | Limit(s)- dB(A) | Wind speed (m/s) | Observations | (Potential) Non-compliance /breach |
|--------|------|--------------------|--------------------------------|-----------------|-----------------|------------------|--------------|------------------------------------|
| | | | LA1, 1 minute | LAeq, 15 minute | | | | |
| N1 | - | 15 mins day | - | | 35 | | | |
| | - | 15 mins evening | - | | 35 | | | |
| | - | 15 mins night | - | | 35 | | | |
| | - | 1 min night | | - | 45 | | | |

Notes:

dB(A): The overall level of a sound is usually expressed in terms of dBA, which is measured using a sound level meter with an “A-weighting” filter. This is an electronic filter having a frequency response corresponding approximately to that of human hearing.

LAeq, 15 minute: The A-weighted equivalent noise level (basically the average noise level). It is defined as the steady sound level that contains the same amount of acoustical energy as the corresponding time-varying sound, in this instance over a period of 15 minutes.

LA1, 1 minute: The noise level exceeded for 1% of the 15 minute interval.

I/A: When site noise is noted as inaudible (I/A), no site noise was audible at the monitoring location.

Not Measurable (NM): indicates that some site noise was audible, but indeterminate due to one of the following reasons:


- site noise levels were insignificant and unlikely, in many cases, to be even noticed; or
- site noise levels were masked by another relatively loud noise source, but were estimated to be less than LAeq 30 dB, which is insignificant in terms of any applicable criterion.



WHITEHAVEN COAL

WHITEHAVEN CHPP – MONTHLY MONITORING SUMMARY



| | | |
|---|--|--|
|  WHITEHAVEN COAL | <p align="center">Figure 1 Gunnedah CHPP EPL3637 Monitoring Locations</p> | <p>0 250 500 ———— Meters</p> |
| <p>Datum MGA2020 Zone 56 Author O.Hulbert Image Nov-22 Date Jan-23 Size/Scale 1:13000</p> | | <p>● CHPP_EPL_Sites_Feb23</p> |



WHITEHAVEN CHPP – MONTHLY MONITORING SUMMARY

Site Information

EPL No: 3637

EPA Website Link: <http://www.epa.nsw.gov.au/prpoeoapp/ViewPOEOLicence.aspx?DOCID=33514&SYSUID=1&LICID=3637>

Licensee: Whitehaven Coal Mining Limited

Licensee Address: Boggabri Road, Gunnedah NSW 2380

EPL Monitoring Points: See Figure 1 below

Sampling Period: March 2024

Obtained Date: 16th April 2024

Publication Date: 17th April 2024

Table 1 - No Pollutant Limits Apply

| EPL ID | Pollutant | Units of Measure | Monitoring Frequency | No. of Measurements for the Month | Date Sampled | Date Obtained | Min Value | Mean Value | Median Value | Max or Only Value |
|--------|--------------------------------|-------------------------|----------------------|-----------------------------------|--|---------------------------------------|-----------|------------|--------------|-------------------|
| 3 | Solid Particles | g/m ² /month | Continuous | 1 | 19/03/2024 | 03/04/2024 | - | - | - | 1.1 |
| 11 | PM ₁₀ Kendo | µg/m ³ | Every 6 days | 5 | 06/03/2024 12/03/2024 18/03/2024 24/03/2024 30/03/2024 | 16/04/2024 (Last sampled received) | 4.6 | 9.58 | 9.2 | 14.4 |
| 12 | PM ₁₀ Olive View | µg/m ³ | Every 6 days | 5 | 06/03/2024 12/03/2024 18/03/2024 24/03/2024 30/03/2024 | 16/04/2024 (Last sampled received) | 6.5 | 10.54 | 10.2 | 14.8 |
| 6 | Conductivity | µs/cm | Each overflow event | 0 | - | - | - | - | - | - |
| | Oil and Grease | mg/L | | | | | - | - | - | - |
| | Total Organic Carbon | mg/L | | | | | - | - | - | - |
| | Total Suspended Solids | mg/L | | | | | - | - | - | - |
| | pH | pH | | | | | - | - | - | - |
| 7 | Conductivity | µs/cm | Quarterly | 0 | | | - | - | - | - |
| | Oil and Grease | mg/L | | | | | - | - | - | - |
| | Total Organic Carbon | mg/L | | | | | - | - | - | - |



WHITEHAVEN CHPP – MONTHLY MONITORING SUMMARY

| EPL ID | Pollutant | Units of Measure | Monitoring Frequency | No. of Measurements for the Month | Date Sampled | Date Obtained | Min Value | Mean Value | Median Value | Max or Only Value |
|--------|------------------------|------------------|----------------------|-----------------------------------|--------------|---------------|-----------|------------|--------------|-------------------|
| | Total Suspended Solids | mg/L | | | | | - | - | - | - |
| | pH | pH | | | | | - | - | - | - |

Table 2 – Groundwater Monitoring (Quarterly – No Limits apply)

| EPL ID | Pollutant | Units of Measure | Monitoring Frequency | No. of Samples for the Period | Date Sampled | Date Obtained | Min Value | Mean Value | Median Value | Max or Only Value |
|--------|----------------------|------------------|----------------------|-------------------------------|--------------|---------------|-----------|------------|--------------|-------------------|
| 8 | Ammonia | mg/L | Quarterly (P1) | 1 | 07/03/2024 | 15/03/2024 | - | - | - | 0.04 |
| | Bicarbonate | mg/L | | | | | - | - | - | 1310 |
| | Calcium | mg/L | | | | | - | - | - | 83 |
| | Chloride | mg/L | | | | | - | - | - | 1840 |
| | Conductivity | µs/cm | | | | | - | - | - | 10200 |
| | Lead | mg/L | | | | | - | - | - | 0.002 |
| | Magnesium | mg/L | | | | | - | - | - | 190 |
| | Nitrate | mg/L | | | | | - | - | - | 0.13 |
| | Potassium | mg/L | | | | | - | - | - | 30 |
| | Sodium | mg/L | | | | | - | - | - | 2040 |
| | Standing Water Level | m | | | | | - | - | - | 6.31 |
| | Sulphate | mg/L | | | | | - | - | - | 1190 |
| pH | pH | - | - | - | 7.80 | | | | | |
| 9 | Ammonia | mg/L | Quarterly (P2) | 1 | 07/03/2024 | 15/03/2024 | - | - | - | 1.14 |
| | Bicarbonate | mg/L | | | | | - | - | - | 922 |
| | Calcium | mg/L | | | | | - | - | - | 286 |
| | Chloride | mg/L | | | | | - | - | - | 1020 |



WHITEHAVEN CHPP – MONTHLY MONITORING SUMMARY

| EPL ID | Pollutant | Units of Measure | Monitoring Frequency | No. of Samples for the Period | Date Sampled | Date Obtained | Min Value | Mean Value | Median Value | Max or Only Value |
|--------|----------------------|------------------|----------------------|-------------------------------|--------------|---------------|-----------|------------|--------------|-------------------|
| | Conductivity | µs/cm | | | | | - | - | - | 6280 |
| | Lead | mg/L | | | | | - | - | - | <0.001 |
| | Magnesium | mg/L | | | | | - | - | - | 238 |
| | Nitrate | mg/L | | | | | - | - | - | 0.15 |
| | Potassium | mg/L | | | | | - | - | - | 104 |
| | Sodium | mg/L | | | | | - | - | - | 712 |
| | Standing Water Level | M | | | | | - | - | - | 1.98 |
| | Sulphate | mg/L | | | | | - | - | - | 736 |
| | pH | pH | | | | | - | - | - | 6.27 |
| 10 | Ammonia | mg/L | Quarterly (P3) | 1 | 07/03/2024 | 15/03/2024 | - | - | - | 4.50 |
| | Bicarbonate | mg/L | | | | | - | - | - | 808 |
| | Calcium | mg/L | | | | | - | - | - | 239 |
| | Chloride | mg/L | | | | | - | - | - | 1260 |
| | Conductivity | µs/cm | | | | | - | - | - | 6160 |
| | Lead | mg/L | | | | | - | - | - | <0.001 |
| | Magnesium | mg/L | | | | | - | - | - | 216 |
| | Nitrate | mg/L | | | | | - | - | - | 1.93 |
| | Potassium | mg/L | | | | | - | - | - | 65 |
| | Sodium | mg/L | | | | | - | - | - | 683 |
| | Standing Water Level | M | | | | | - | - | - | 1.32 |
| | Sulphate | mg/L | | | | | - | - | - | 270 |
| | pH | pH | | | | | - | - | - | 7.28 |



WHITEHAVEN CHPP – MONTHLY MONITORING SUMMARY

Table 3 – Monitoring (Quarterly Noise – Limits Apply)

| EPL ID | Date | Measurement Period | Measured levels – CHPP – dB(A) | | Limit(s)- dB(A) | Wind speed (m/s) | Observations | (Potential) Non-compliance /breach |
|--------|------------|--------------------|--------------------------------|------------------------------|-----------------|------------------|---|------------------------------------|
| | | | L _{A1} , 1 minute | L _{Aeq} , 15 minute | | | | |
| N1 | 14/03/2024 | 15 mins day | - | I/A | 35 | 1.8 | Animals 65-70, Traffic 40-46, Aircraft 58, Birds 45-56 | No |
| | 14/03/2024 | 15 mins evening | - | 30 | 35 | 1.1 | Site Noise: Dozer, Insects 40-42, Dogs 48-57, Traffic 30-35 | |
| | | 15 mins night | - | 28 | 35 | Calm | Site Noise: Dozer, Traffic 34-44, Dogs 57-60 | |
| | | 1 min night | 38 | - | 45 | Calm | | |

Notes:

dB(A): The overall level of a sound is usually expressed in terms of dBA, which is measured using a sound level meter with an “A-weighting” filter. This is an electronic filter having a frequency response corresponding approximately to that of human hearing.

L_{Aeq}, 15 minute: The A-weighted equivalent noise level (basically the average noise level). It is defined as the steady sound level that contains the same amount of acoustical energy as the corresponding time-varying sound, in this instance over a period of 15 minutes.

L_{A1}, 1 minute: The noise level exceeded for 1% of the 15 minute interval.

I/A: When site noise is noted as inaudible (I/A), no site noise was audible at the monitoring location.

Not Measurable (NM): indicates that some site noise was audible, but indeterminate due to one of the following reasons:


- site noise levels were insignificant and unlikely, in many cases, to be even noticed; or
- site noise levels were masked by another relatively loud noise source, but were estimated to be less than L_{Aeq} 30 dB, which is insignificant in terms of any applicable criterion.



WHITEHAVEN COAL

WHITEHAVEN CHPP – MONTHLY MONITORING SUMMARY



| | | |
|---|--|--|
|  WHITEHAVEN COAL | <p align="center">Figure 1 Gunnedah CHPP EPL3637 Monitoring Locations</p> | <p>0 250 500 ────────── Meters</p> |
| <p>Datum MGA2020 Zone 56 Author O.Hulbert Image Nov-22 Date Jan-23 Size/Scale 1:13000</p> | | <p>● CHPP_EPL_Sites_Feb23</p> |



WHITEHAVEN CHPP – MONTHLY MONITORING SUMMARY

Site Information

EPL No: 3637

EPA Website Link: <http://www.epa.nsw.gov.au/prpoeoapp/ViewPOEOLicence.aspx?DOCID=33514&SYSUID=1&LICID=3637>

Licensee: Whitehaven Coal Mining Limited

Licensee Address: Boggabri Road, Gunnedah NSW 2380

EPL Monitoring Points: See Figure 1 below

Sampling Period: April 2024

Obtained Date: 14th May 2024

Publication Date: 15th May 2024

Table 1 - No Pollutant Limits Apply

| EPL ID | Pollutant | Units of Measure | Monitoring Frequency | No. of Measurements for the Month | Date Sampled | Date Obtained | Min Value | Mean Value | Median Value | Max or Only Value |
|--------|--------------------------------|-------------------------|----------------------|-----------------------------------|--|---------------------------------------|-----------|------------|--------------|-------------------|
| 3 | Solid Particles | g/m ² /month | Continuous | 1 | 17/04/2024 | 13/05/2024 | - | - | - | 0.8 |
| 11 | PM ₁₀ Kendo | µg/m ³ | Every 6 days | 5 | 05/04/2024 11/04/2024 17/04/2024 23/04/2024 29/04/2024 | 14/05/2024 (Last sampled received) | 3.5 | 15.2 | 18.7 | 26.4 |
| 12 | PM ₁₀ Olive View | µg/m ³ | Every 6 days | 5 | 05/04/2024 11/04/2024 17/04/2024 23/04/2024 29/04/2024 | 14/05/2024 (Last sampled received) | 3.8 | 6.2 | 5.6 | 9.8 |
| 6 | Conductivity | µs/cm | Each overflow event | 0 | - | - | - | - | - | - |
| | Oil and Grease | mg/L | | | | | - | - | - | - |
| | Total Organic Carbon | mg/L | | | | | - | - | - | - |
| | Total Suspended Solids | mg/L | | | | | - | - | - | - |
| | pH | pH | | | | | - | - | - | - |
| 7 | Conductivity | µs/cm | Quarterly | 0 | - | - | - | - | - | - |
| | Oil and Grease | mg/L | | | | | - | - | - | - |
| | Total Organic Carbon | mg/L | | | | | - | - | - | - |



WHITEHAVEN COAL

WHITEHAVEN CHPP – MONTHLY MONITORING SUMMARY

| EPL ID | Pollutant | Units of Measure | Monitoring Frequency | No. of Measurements for the Month | Date Sampled | Date Obtained | Min Value | Mean Value | Median Value | Max or Only Value |
|--------|------------------------|------------------|----------------------|-----------------------------------|--------------|---------------|-----------|------------|--------------|-------------------|
| | Total Suspended Solids | mg/L | | | | | - | - | - | - |
| | pH | pH | | | | | - | - | - | - |

Table 2 – Groundwater Monitoring (Quarterly – No Limits apply)

| EPL ID | Pollutant | Units of Measure | Monitoring Frequency | No. of Samples for the Period | Date Sampled | Date Obtained | Min Value | Mean Value | Median Value | Max or Only Value |
|--------|----------------------|------------------|----------------------|-------------------------------|--------------|---------------|-----------|------------|--------------|-------------------|
| 8 | Ammonia | mg/L | Quarterly (P1) | 0 | - | - | - | - | - | - |
| | Bicarbonate | mg/L | | | | | - | - | - | - |
| | Calcium | mg/L | | | | | - | - | - | - |
| | Chloride | mg/L | | | | | - | - | - | - |
| | Conductivity | µs/cm | | | | | - | - | - | - |
| | Lead | mg/L | | | | | - | - | - | - |
| | Magnesium | mg/L | | | | | - | - | - | - |
| | Nitrate | mg/L | | | | | - | - | - | - |
| | Potassium | mg/L | | | | | - | - | - | - |
| | Sodium | mg/L | | | | | - | - | - | - |
| | Standing Water Level | m | | | | | - | - | - | - |
| | Sulphate | mg/L | | | | | - | - | - | - |
| | pH | pH | | | | | - | - | - | - |
| 9 | Ammonia | mg/L | Quarterly (P2) | 0 | - | - | - | - | - | - |
| | Bicarbonate | mg/L | | | | | - | - | - | - |
| | Calcium | mg/L | | | | | - | - | - | - |
| | Chloride | mg/L | | | | | - | - | - | - |



WHITEHAVEN COAL

WHITEHAVEN CHPP – MONTHLY MONITORING SUMMARY

| EPL ID | Pollutant | Units of Measure | Monitoring Frequency | No. of Samples for the Period | Date Sampled | Date Obtained | Min Value | Mean Value | Median Value | Max or Only Value |
|--------|----------------------|------------------|----------------------|-------------------------------|--------------|---------------|-----------|------------|--------------|-------------------|
| | Conductivity | µs/cm | | | | | - | - | - | - |
| | Lead | mg/L | | | | | - | - | - | - |
| | Magnesium | mg/L | | | | | - | - | - | - |
| | Nitrate | mg/L | | | | | - | - | - | - |
| | Potassium | mg/L | | | | | - | - | - | - |
| | Sodium | mg/L | | | | | - | - | - | - |
| | Standing Water Level | M | | | | | - | - | - | - |
| | Sulphate | mg/L | | | | | - | - | - | - |
| | pH | pH | | | | | - | - | - | - |
| 10 | Ammonia | mg/L | Quarterly (P3) | 0 | - | - | - | - | - | - |
| | Bicarbonate | mg/L | | | | | - | - | - | - |
| | Calcium | mg/L | | | | | - | - | - | - |
| | Chloride | mg/L | | | | | - | - | - | - |
| | Conductivity | µs/cm | | | | | - | - | - | - |
| | Lead | mg/L | | | | | - | - | - | - |
| | Magnesium | mg/L | | | | | - | - | - | - |
| | Nitrate | mg/L | | | | | - | - | - | - |
| | Potassium | mg/L | | | | | - | - | - | - |
| | Sodium | mg/L | | | | | - | - | - | - |
| | Standing Water Level | M | | | | | - | - | - | - |
| | Sulphate | mg/L | | | | | - | - | - | - |
| | pH | pH | | | | | - | - | - | - |



WHITEHAVEN CHPP – MONTHLY MONITORING SUMMARY

Table 3 – Monitoring (Quarterly Noise – Limits Apply)

| EPL ID | Date | Measurement Period | Measured levels – CHPP – dB(A) | | Limit(s)- dB(A) | Wind speed (m/s) | Observations | (Potential) Non-compliance /breach |
|--------|------|--------------------|--------------------------------|------------------------------|-----------------|------------------|--------------|------------------------------------|
| | | | L _{A1} , 1 minute | L _{Aeq} , 15 minute | | | | |
| N1 | - | 15 mins day | - | - | 35 | - | - | - |
| | - | 15 mins evening | - | - | 35 | - | - | |
| | | 15 mins night | - | - | 35 | - | - | |
| | | 1 min night | - | - | 45 | - | - | |

Notes:

dB(A): The overall level of a sound is usually expressed in terms of dBA, which is measured using a sound level meter with an “A-weighting” filter. This is an electronic filter having a frequency response corresponding approximately to that of human hearing.

L_{Aeq}, 15 minute: The A-weighted equivalent noise level (basically the average noise level). It is defined as the steady sound level that contains the same amount of acoustical energy as the corresponding time-varying sound, in this instance over a period of 15 minutes.

L_{A1}, 1 minute: The noise level exceeded for 1% of the 15 minute interval.

I/A: When site noise is noted as inaudible (I/A), no site noise was audible at the monitoring location.

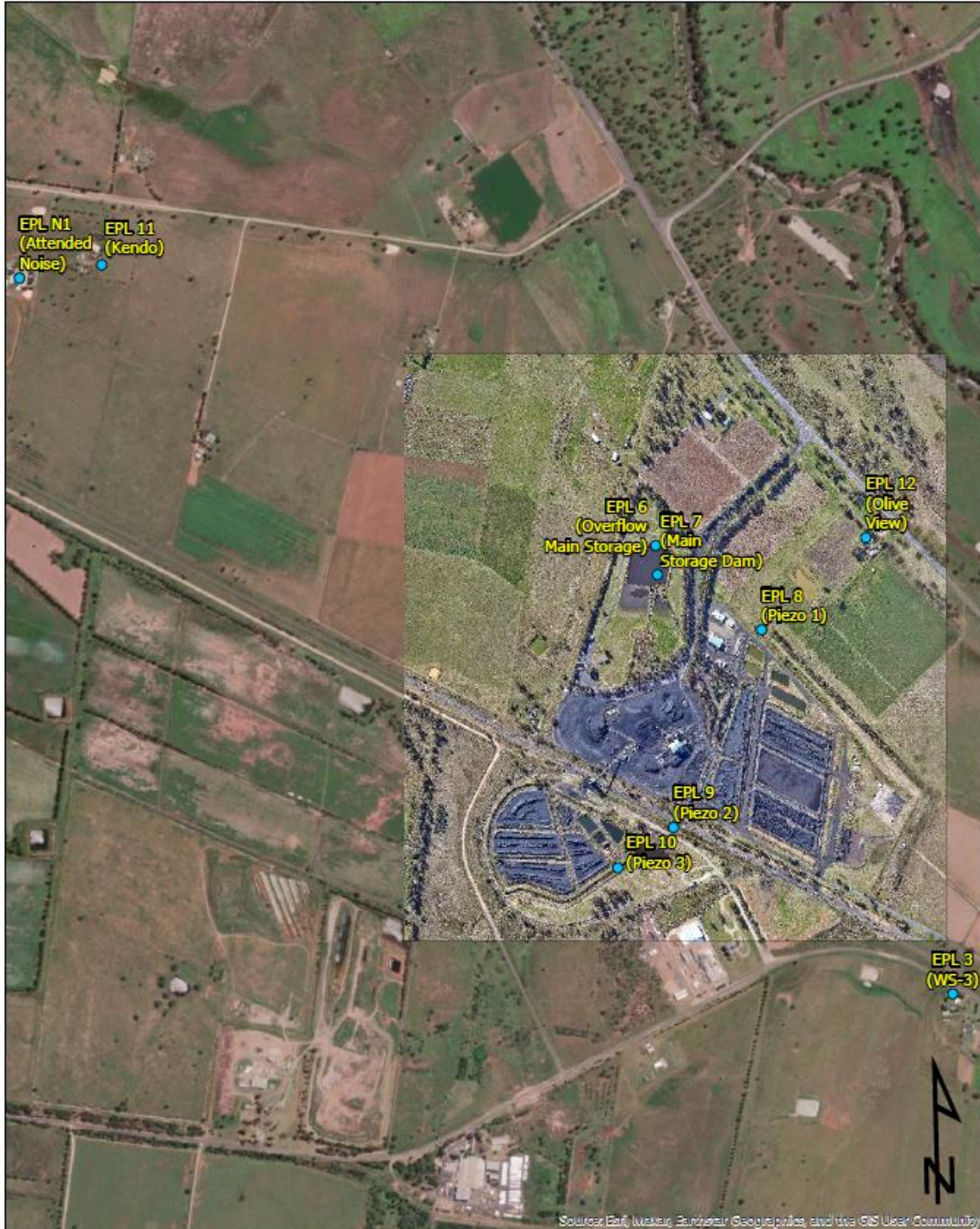
Not Measurable (NM): indicates that some site noise was audible, but indeterminate due to one of the following reasons:

- site noise levels were insignificant and unlikely, in many cases, to be even noticed; or
- site noise levels were masked by another relatively loud noise source, but were estimated to be less than LAeq 30 dB, which is insignificant in terms of any applicable criterion.




WHITEHAVEN COAL

WHITEHAVEN CHPP – MONTHLY MONITORING SUMMARY



Source: EIT, Water, Earthair Geographics, and the GIS User Community

| | | |
|---|--|---|
|  WHITEHAVEN COAL | <p align="center">Figure 1 Gunnedah CHPP EPL3637 Monitoring Locations</p> | <p>0 250 500 ─────────── Meters</p> |
| <p>Datum MGA2020 Zone 56 Author O.Hulbert Image Nov-22 Date Jan-23 Size/Scale 1:13000</p> | | <p>● CHPP_EPL_Sites_Feb23</p> |



WHITEHAVEN CHPP – MONTHLY MONITORING SUMMARY

Site Information

EPL No: 3637

EPA Website Link: <http://www.epa.nsw.gov.au/prpoeoapp/ViewPOEOLicence.aspx?DOCID=33514&SYSUID=1&LICID=3637>

Licensee: Whitehaven Coal Mining Limited

Licensee Address: Boggabri Road, Gunnedah NSW 2380

EPL Monitoring Points: See Figure 1 below

Sampling Period: April 2024

Obtained Date: 12th June 2024

Publication Date: 14th June 2024

Table 1 - No Pollutant Limits Apply

| EPL ID | Pollutant | Units of Measure | Monitoring Frequency | No. of Measurements for the Month | Date Sampled | Date Obtained | Min Value | Mean Value | Median Value | Max or Only Value |
|--------|--------------------------------|-------------------------|----------------------|-----------------------------------|--|---------------------------------------|-----------|------------|--------------|-------------------|
| 3 | Solid Particles | g/m ² /month | Continuous | 1 | 17/05/2024 | 12/06/2024 | - | - | - | 0.8 |
| 11 | PM ₁₀ Kendo | µg/m ³ | Every 6 days | 5 | 05/05/2024 11/05/2024 17/05/2024 23/05/2024 29/05/2024 | 11/06/2024 (Last sampled received) | 1.2 | 18.92 | 14.1 | 45.1 |
| 12 | PM ₁₀ Olive View | µg/m ³ | Every 6 days | 5 | 05/05/2024 11/05/2024 17/05/2024 23/05/2024 29/05/2024 | 11/06/2024 (Last sampled received) | 1.0 | 10.26 | 13.6 | 16.3 |
| 6 | Conductivity | µs/cm | Each overflow event | 0 | - | - | - | - | - | - |
| | Oil and Grease | mg/L | | | | | - | - | - | - |
| | Total Organic Carbon | mg/L | | | | | - | - | - | - |
| | Total Suspended Solids | mg/L | | | | | - | - | - | - |
| | pH | pH | | | | | - | - | - | - |
| 7 | Conductivity | µs/cm | Quarterly | 1 | 07/05/2024 | 15/05/2024 | - | - | - | 1420 |
| | Oil and Grease | mg/L | | | | | - | - | - | <5 |
| | Total Organic Carbon | mg/L | | | | | - | - | - | 3 |



WHITEHAVEN CHPP – MONTHLY MONITORING SUMMARY

| EPL ID | Pollutant | Units of Measure | Monitoring Frequency | No. of Measurements for the Month | Date Sampled | Date Obtained | Min Value | Mean Value | Median Value | Max or Only Value |
|--------|------------------------|------------------|----------------------|-----------------------------------|--------------|---------------|-----------|------------|--------------|-------------------|
| | Total Suspended Solids | mg/L | | | | | - | - | - | 44 |
| | pH | pH | | | | | - | - | - | 8.08 |

Table 2 – Groundwater Monitoring (Quarterly – No Limits apply)

| EPL ID | Pollutant | Units of Measure | Monitoring Frequency | No. of Samples for the Period | Date Sampled | Date Obtained | Min Value | Mean Value | Median Value | Max or Only Value |
|--------|----------------------|------------------|----------------------|-------------------------------|--------------|---------------|-----------|------------|--------------|-------------------|
| 8 | Ammonia | mg/L | Quarterly (P1) | 0 | - | - | - | - | - | - |
| | Bicarbonate | mg/L | | | | | - | - | - | - |
| | Calcium | mg/L | | | | | - | - | - | - |
| | Chloride | mg/L | | | | | - | - | - | - |
| | Conductivity | µs/cm | | | | | - | - | - | - |
| | Lead | mg/L | | | | | - | - | - | - |
| | Magnesium | mg/L | | | | | - | - | - | - |
| | Nitrate | mg/L | | | | | - | - | - | - |
| | Potassium | mg/L | | | | | - | - | - | - |
| | Sodium | mg/L | | | | | - | - | - | - |
| | Standing Water Level | m | | | | | - | - | - | - |
| | Sulphate | mg/L | | | | | - | - | - | - |
| | pH | pH | | | | | - | - | - | - |
| 9 | Ammonia | mg/L | Quarterly (P2) | 0 | - | - | - | - | - | - |
| | Bicarbonate | mg/L | | | | | - | - | - | - |
| | Calcium | mg/L | | | | | - | - | - | - |
| | Chloride | mg/L | | | | | - | - | - | - |



WHITEHAVEN CHPP – MONTHLY MONITORING SUMMARY

| EPL ID | Pollutant | Units of Measure | Monitoring Frequency | No. of Samples for the Period | Date Sampled | Date Obtained | Min Value | Mean Value | Median Value | Max or Only Value |
|--------|----------------------|------------------|----------------------|-------------------------------|--------------|---------------|-----------|------------|--------------|-------------------|
| | Conductivity | µs/cm | | | | | - | - | - | - |
| | Lead | mg/L | | | | | - | - | - | - |
| | Magnesium | mg/L | | | | | - | - | - | - |
| | Nitrate | mg/L | | | | | - | - | - | - |
| | Potassium | mg/L | | | | | - | - | - | - |
| | Sodium | mg/L | | | | | - | - | - | - |
| | Standing Water Level | M | | | | | - | - | - | - |
| | Sulphate | mg/L | | | | | - | - | - | - |
| | pH | pH | | | | | - | - | - | - |
| 10 | Ammonia | mg/L | Quarterly (P3) | 0 | - | - | - | - | - | - |
| | Bicarbonate | mg/L | | | | | - | - | - | - |
| | Calcium | mg/L | | | | | - | - | - | - |
| | Chloride | mg/L | | | | | - | - | - | - |
| | Conductivity | µs/cm | | | | | - | - | - | - |
| | Lead | mg/L | | | | | - | - | - | - |
| | Magnesium | mg/L | | | | | - | - | - | - |
| | Nitrate | mg/L | | | | | - | - | - | - |
| | Potassium | mg/L | | | | | - | - | - | - |
| | Sodium | mg/L | | | | | - | - | - | - |
| | Standing Water Level | M | | | | | - | - | - | - |
| | Sulphate | mg/L | | | | | - | - | - | - |
| | pH | pH | | | | | - | - | - | - |



WHITEHAVEN CHPP – MONTHLY MONITORING SUMMARY

Table 3 – Monitoring (Quarterly Noise – Limits Apply)

| EPL ID | Date | Measurement Period | Measured levels – CHPP – dB(A) | | Limit(s)- dB(A) | Wind speed (m/s) | Observations | (Potential) Non-compliance /breach |
|--------|------|--------------------|--------------------------------|-----------------|-----------------|------------------|--------------|------------------------------------|
| | | | LA1, 1 minute | LAeq, 15 minute | | | | |
| N1 | - | 15 mins day | - | - | 35 | - | - | - |
| | - | 15 mins evening | - | - | 35 | - | - | |
| | | 15 mins night | - | - | 35 | - | - | |
| | | 1 min night | - | - | 45 | - | - | |

Notes:

dB(A): The overall level of a sound is usually expressed in terms of dBA, which is measured using a sound level meter with an “A-weighting” filter. This is an electronic filter having a frequency response corresponding approximately to that of human hearing.

LAeq, 15 minute: The A-weighted equivalent noise level (basically the average noise level). It is defined as the steady sound level that contains the same amount of acoustical energy as the corresponding time-varying sound, in this instance over a period of 15 minutes.

LA1, 1 minute: The noise level exceeded for 1% of the 15 minute interval.

I/A: When site noise is noted as inaudible (I/A), no site noise was audible at the monitoring location.

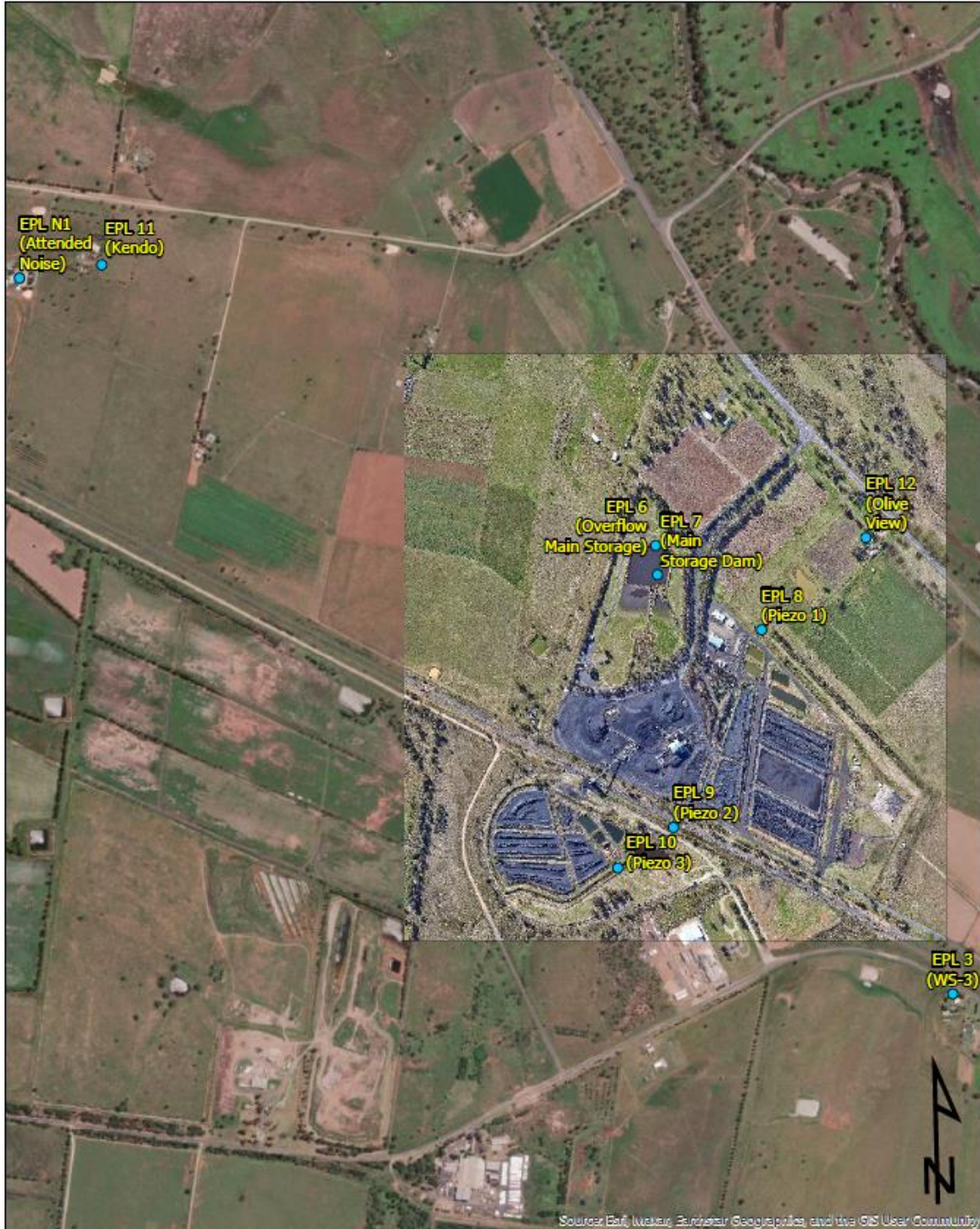
Not Measurable (NM): indicates that some site noise was audible, but indeterminate due to one of the following reasons:


- site noise levels were insignificant and unlikely, in many cases, to be even noticed; or
- site noise levels were masked by another relatively loud noise source, but were estimated to be less than LAeq 30 dB, which is insignificant in terms of any applicable criterion.



WHITEHAVEN COAL

WHITEHAVEN CHPP – MONTHLY MONITORING SUMMARY



| | | |
|---|--|---|
|  WHITEHAVEN COAL | <p align="center">Figure 1 Gunnedah CHPP EPL3637 Monitoring Locations</p> | <p>0 250 500 ——— Meters</p> |
| <p>Datum MGA2020 Zone 56 Author O.Hulbert Image Nov-22 Date Jan-23 Size/Scale 1:13000</p> | | <p>● CHPP_EPL_Sites_Feb23</p> |



WHITEHAVEN CHPP – MONTHLY MONITORING SUMMARY

Site Information

EPL No: 3637

EPA Website Link: <http://www.epa.nsw.gov.au/prpoeoapp/ViewPOEOLicence.aspx?DOCID=33514&SYSUID=1&LICID=3637>

Licensee: Whitehaven Coal Mining Limited

Licensee Address: Boggabri Road, Gunnedah NSW 2380

EPL Monitoring Points: See Figure 1 below

Sampling Period: June 2024

Obtained Date: 17th July 2024

Publication Date: 17th July 2024

Table 1 - No Pollutant Limits Apply

| EPL ID | Pollutant | Units of Measure | Monitoring Frequency | No. of Measurements for the Month | Date Sampled | Date Obtained | Min Value | Mean Value | Median Value | Max or Only Value |
|--------|--------------------------------|-------------------------|----------------------|-----------------------------------|--|---------------------------------------|-----------|------------|--------------|-------------------|
| 3 | Solid Particles | g/m ² /month | Continuous | 1 | 14/06/2024 | 01/07/2024 | - | - | - | 0.2 |
| 11 | PM ₁₀ Kendo | µg/m ³ | Every 6 days | 5 | 04/06/2024 10/06/2024 16/06/2024 22/06/2024 28/06/2024 | 11/07/2024 (Last sampled received) | 2.7 | 11.12 | 5.0 | 37.6 |
| 12 | PM ₁₀ Olive View | µg/m ³ | Every 6 days | 5 | 04/06/2024 10/06/2024 16/06/2024 22/06/2024 28/06/2024 | 11/07/2024 (Last sampled received) | 5.0 | 8.64 | 6.4 | 15.9 |
| 6 | Conductivity | µs/cm | Each overflow event | 0 | - | - | - | - | - | - |
| | Oil and Grease | mg/L | | | | | - | - | - | - |
| | Total Organic Carbon | mg/L | | | | | - | - | - | - |
| | Total Suspended Solids | mg/L | | | | | - | - | - | - |
| | pH | pH | | | | | - | - | - | - |
| 7 | Conductivity | µs/cm | Quarterly | 0 | - | - | - | - | - | - |
| | Oil and Grease | mg/L | | | | | - | - | - | - |
| | Total Organic Carbon | mg/L | | | | | - | - | - | - |



WHITEHAVEN COAL

WHITEHAVEN CHPP – MONTHLY MONITORING SUMMARY

| EPL ID | Pollutant | Units of Measure | Monitoring Frequency | No. of Measurements for the Month | Date Sampled | Date Obtained | Min Value | Mean Value | Median Value | Max or Only Value |
|--------|------------------------|------------------|----------------------|-----------------------------------|--------------|---------------|-----------|------------|--------------|-------------------|
| | Total Suspended Solids | mg/L | | | | | - | - | - | - |
| | pH | pH | | | | | - | - | - | - |

Table 2 – Groundwater Monitoring (Quarterly – No Limits apply)

| EPL ID | Pollutant | Units of Measure | Monitoring Frequency | No. of Samples for the Period | Date Sampled | Date Obtained | Min Value | Mean Value | Median Value | Max or Only Value |
|--------|----------------------|------------------|----------------------|-------------------------------|--------------|---------------|-----------|------------|--------------|-------------------|
| 8 | Ammonia | mg/L | Quarterly (P1) | 0 | - | - | - | - | - | - |
| | Bicarbonate | mg/L | | | | | - | - | - | - |
| | Calcium | mg/L | | | | | - | - | - | - |
| | Chloride | mg/L | | | | | - | - | - | - |
| | Conductivity | µs/cm | | | | | - | - | - | - |
| | Lead | mg/L | | | | | - | - | - | - |
| | Magnesium | mg/L | | | | | - | - | - | - |
| | Nitrate | mg/L | | | | | - | - | - | - |
| | Potassium | mg/L | | | | | - | - | - | - |
| | Sodium | mg/L | | | | | - | - | - | - |
| | Standing Water Level | m | | | | | - | - | - | - |
| | Sulphate | mg/L | | | | | - | - | - | - |
| | pH | pH | | | | | - | - | - | - |
| 9 | Ammonia | mg/L | Quarterly (P2) | 0 | - | - | - | - | - | - |
| | Bicarbonate | mg/L | | | | | - | - | - | - |
| | Calcium | mg/L | | | | | - | - | - | - |
| | Chloride | mg/L | | | | | - | - | - | - |



WHITEHAVEN CHPP – MONTHLY MONITORING SUMMARY

| EPL ID | Pollutant | Units of Measure | Monitoring Frequency | No. of Samples for the Period | Date Sampled | Date Obtained | Min Value | Mean Value | Median Value | Max or Only Value |
|--------|----------------------|------------------|----------------------|-------------------------------|--------------|---------------|-----------|------------|--------------|-------------------|
| | Conductivity | µs/cm | | | | | - | - | - | - |
| | Lead | mg/L | | | | | - | - | - | - |
| | Magnesium | mg/L | | | | | - | - | - | - |
| | Nitrate | mg/L | | | | | - | - | - | - |
| | Potassium | mg/L | | | | | - | - | - | - |
| | Sodium | mg/L | | | | | - | - | - | - |
| | Standing Water Level | M | | | | | - | - | - | - |
| | Sulphate | mg/L | | | | | - | - | - | - |
| | pH | pH | | | | | - | - | - | - |
| 10 | Ammonia | mg/L | Quarterly (P3) | 0 | - | - | - | - | - | - |
| | Bicarbonate | mg/L | | | | | - | - | - | - |
| | Calcium | mg/L | | | | | - | - | - | - |
| | Chloride | mg/L | | | | | - | - | - | - |
| | Conductivity | µs/cm | | | | | - | - | - | - |
| | Lead | mg/L | | | | | - | - | - | - |
| | Magnesium | mg/L | | | | | - | - | - | - |
| | Nitrate | mg/L | | | | | - | - | - | - |
| | Potassium | mg/L | | | | | - | - | - | - |
| | Sodium | mg/L | | | | | - | - | - | - |
| | Standing Water Level | M | | | | | - | - | - | - |
| | Sulphate | mg/L | | | | | - | - | - | - |
| | pH | pH | | | | | - | - | - | - |



WHITEHAVEN CHPP – MONTHLY MONITORING SUMMARY

Table 3 – Monitoring (Quarterly Noise – Limits Apply)

| EPL ID | Date | Measurement Period | Measured levels – CHPP – dB(A) | | Limit(s)- dB(A) | Wind speed (m/s) | Observations | (Potential) Non-compliance /breach |
|--------|------------|--------------------|--------------------------------|-----------------|-----------------|------------------|---|------------------------------------|
| | | | LA1, 1 minute | LAeq, 15 minute | | | | |
| N1 | 06/06/2024 | 15 mins day | - | I/A | 35 | 1.9 | General site activity faintly audible, Animals 52-76, Traffic 30-35, Birds 43-55, Aircraft 53 | No |
| | 06/06/2024 | 15 mins evening | - | I/A | 35 | 0.8 | Traffic 36-47 | |
| | | 15 mins night | - | I/A | 35 | 1.1 | Traffic 44-50, Animals 42-45 | |
| | | 1 min night | I/A | - | 45 | 1.1 | | |

Notes:

dB(A): The overall level of a sound is usually expressed in terms of dBA, which is measured using a sound level meter with an “A-weighting” filter. This is an electronic filter having a frequency response corresponding approximately to that of human hearing.

LAeq, 15 minute: The A-weighted equivalent noise level (basically the average noise level). It is defined as the steady sound level that contains the same amount of acoustical energy as the corresponding time-varying sound, in this instance over a period of 15 minutes.

LA1, 1 minute: The noise level exceeded for 1% of the 15 minute interval.

I/A: When site noise is noted as inaudible (I/A), no site noise was audible at the monitoring location.

Not Measurable (NM): indicates that some site noise was audible, but indeterminate due to one of the following reasons:

- site noise levels were insignificant and unlikely, in many cases, to be even noticed; or
- site noise levels were masked by another relatively loud noise source, but were estimated to be less than LAeq 30 dB, which is insignificant in terms of any applicable criterion.



WHITEHAVEN COAL

WHITEHAVEN CHPP – MONTHLY MONITORING SUMMARY



| | | |
|--|--|---|
|  WHITEHAVEN COAL | <p align="center">Figure 1 Gunnedah CHPP EPL3637 Monitoring Locations</p> | <p>0 250 500  Meters</p> |
| <p>Datum MGA2020 Zone 56 Author O.Hulbert Image Nov-22 Date Jan-23 Size/Scale 1:13000</p> | | <p> CHPP_EPL_Sites_Feb23</p> |



WHITEHAVEN CHPP – MONTHLY MONITORING SUMMARY

Site Information

EPL No: 3637

EPA Website Link: <http://www.epa.nsw.gov.au/prpoeoapp/ViewPOEOLicence.aspx?DOCID=33514&SYSUID=1&LICID=3637>

Licensee: Whitehaven Coal Mining Limited

Licensee Address: Boggabri Road, Gunnedah NSW 2380

EPL Monitoring Points: See Figure 1 below

Sampling Period: July 2024

Obtained Date: 9th August 2024

Publication Date: 19th August 2024

Table 1 - No Pollutant Limits Apply

| EPL ID | Pollutant | Units of Measure | Monitoring Frequency | No. of Measurements for the Month | Date Sampled | Date Obtained | Min Value | Mean Value | Median Value | Max or Only Value |
|--------|--------------------------------|-------------------------|----------------------|-----------------------------------|--|---------------------------------------|-----------|------------|--------------|-------------------|
| 3 | Solid Particles | g/m ² /month | Continuous | 1 | 12/07/2024 | 25/07/2024 | - | - | - | 0.4 |
| 11 | PM ₁₀ Kendo | µg/m ³ | Every 6 days | 5 | 04/07/2024 10/07/2024 16/07/2024 22/07/2024 28/07/2024 | 09/08/2024 (Last sampled received) | 1.7 | 5.34 | 4.0 | 11.3 |
| 12 | PM ₁₀ Olive View | µg/m ³ | Every 6 days | 5 | 04/07/2024 10/07/2024 16/07/2024 22/07/2024 28/07/2024 | 09/08/2024 (Last sampled received) | 2.4 | 5.54 | 6.3 | 8.8 |
| 6 | Conductivity | µs/cm | Each overflow event | 0 | - | - | - | - | - | - |
| | Oil and Grease | mg/L | | | | | - | - | - | - |
| | Total Organic Carbon | mg/L | | | | | - | - | - | - |
| | Total Suspended Solids | mg/L | | | | | - | - | - | - |
| | pH | pH | | | | | - | - | - | - |
| 7 | Conductivity | µs/cm | Quarterly | 0 | - | - | - | - | - | - |
| | Oil and Grease | mg/L | | | | | - | - | - | - |
| | Total Organic Carbon | mg/L | | | | | - | - | - | - |



WHITEHAVEN CHPP – MONTHLY MONITORING SUMMARY

| EPL ID | Pollutant | Units of Measure | Monitoring Frequency | No. of Measurements for the Month | Date Sampled | Date Obtained | Min Value | Mean Value | Median Value | Max or Only Value |
|--------|------------------------|------------------|----------------------|-----------------------------------|--------------|---------------|-----------|------------|--------------|-------------------|
| | Total Suspended Solids | mg/L | | | | | - | - | - | - |
| | pH | pH | | | | | - | - | - | - |

Table 2 – Groundwater Monitoring (Quarterly – No Limits apply)

| EPL ID | Pollutant | Units of Measure | Monitoring Frequency | No. of Samples for the Period | Date Sampled | Date Obtained | Min Value | Mean Value | Median Value | Max or Only Value |
|--------|----------------------|------------------|----------------------|-------------------------------|--------------|---------------|-----------|------------|--------------|-------------------|
| 8 | Ammonia | mg/L | Quarterly (P1) | 1 | 17/07/2024 | 25/07/2024 | - | - | - | 0.22 |
| | Bicarbonate | mg/L | | | | | - | - | - | 1280 |
| | Calcium | mg/L | | | | | - | - | - | 57 |
| | Chloride | mg/L | | | | | - | - | - | 1980 |
| | Conductivity | µs/cm | | | | | - | - | - | 9030 |
| | Lead | mg/L | | | | | - | - | - | <0.001 |
| | Magnesium | mg/L | | | | | - | - | - | 187 |
| | Nitrate | mg/L | | | | | - | - | - | 0.35 |
| | Potassium | mg/L | | | | | - | - | - | 26 |
| | Sodium | mg/L | | | | | - | - | - | 2100 |
| | Standing Water Level | m | | | | | - | - | - | 6.41 |
| | Sulphate | mg/L | | | | | - | - | - | 1480 |
| pH | pH | - | - | - | 7.99 | | | | | |
| 9 | Ammonia | mg/L | Quarterly (P2) | 1 | 17/07/2024 | 25/07/2024 | - | - | - | 0.02 |
| | Bicarbonate | mg/L | | | | | - | - | - | 912 |
| | Calcium | mg/L | | | | | - | - | - | 277 |
| | Chloride | mg/L | | | | | - | - | - | 1160 |



WHITEHAVEN CHPP – MONTHLY MONITORING SUMMARY

| EPL ID | Pollutant | Units of Measure | Monitoring Frequency | No. of Samples for the Period | Date Sampled | Date Obtained | Min Value | Mean Value | Median Value | Max or Only Value |
|--------|----------------------|------------------|----------------------|-------------------------------|--------------|---------------|-----------|------------|--------------|-------------------|
| | Conductivity | µs/cm | | | | | - | - | - | 5610 |
| | Lead | mg/L | | | | | - | - | - | <0.001 |
| | Magnesium | mg/L | | | | | - | - | - | 241 |
| | Nitrate | mg/L | | | | | - | - | - | 0.71 |
| | Potassium | mg/L | | | | | - | - | - | 124 |
| | Sodium | mg/L | | | | | - | - | - | 724 |
| | Standing Water Level | M | | | | | - | - | - | 1.71 |
| | Sulphate | mg/L | | | | | - | - | - | 692 |
| | pH | pH | | | | | - | - | - | 7.51 |
| 10 | Ammonia | mg/L | Quarterly (P3) | 1 | 17/07/2024 | 25/07/2024 | - | - | - | 0.33 |
| | Bicarbonate | mg/L | | | | | - | - | - | 778 |
| | Calcium | mg/L | | | | | - | - | - | 241 |
| | Chloride | mg/L | | | | | - | - | - | 1430 |
| | Conductivity | µs/cm | | | | | - | - | - | 5530 |
| | Lead | mg/L | | | | | - | - | - | <0.001 |
| | Magnesium | mg/L | | | | | - | - | - | 229 |
| | Nitrate | mg/L | | | | | - | - | - | 6.25 |
| | Potassium | mg/L | | | | | - | - | - | 65 |
| | Sodium | mg/L | | | | | - | - | - | 738 |
| | Standing Water Level | M | | | | | - | - | - | 1.29 |
| | Sulphate | mg/L | | | | | - | - | - | 280 |
| | pH | pH | | | | | - | - | - | 7.33 |



WHITEHAVEN CHPP – MONTHLY MONITORING SUMMARY

Table 3 – Monitoring (Quarterly Noise – Limits Apply)

| EPL ID | Date | Measurement Period | Measured levels – CHPP – dB(A) | | Limit(s)- dB(A) | Wind speed (m/s) | Observations | (Potential) Non-compliance /breach |
|--------|------|--------------------|--------------------------------|-----------------|-----------------|------------------|--------------|------------------------------------|
| | | | LA1, 1 minute | LAeq, 15 minute | | | | |
| N1 | - | 15 mins day | - | - | 35 | - | - | - |
| | - | 15 mins evening | - | - | 35 | - | - | |
| | | 15 mins night | - | - | 35 | - | - | |
| | | 1 min night | - | - | 45 | - | - | |

Notes:

dB(A): The overall level of a sound is usually expressed in terms of dBA, which is measured using a sound level meter with an “A-weighting” filter. This is an electronic filter having a frequency response corresponding approximately to that of human hearing.

LAeq, 15 minute: The A-weighted equivalent noise level (basically the average noise level). It is defined as the steady sound level that contains the same amount of acoustical energy as the corresponding time-varying sound, in this instance over a period of 15 minutes.

LA1, 1 minute: The noise level exceeded for 1% of the 15 minute interval.

I/A: When site noise is noted as inaudible (I/A), no site noise was audible at the monitoring location.

Not Measurable (NM): indicates that some site noise was audible, but indeterminate due to one of the following reasons:

- site noise levels were insignificant and unlikely, in many cases, to be even noticed; or
- site noise levels were masked by another relatively loud noise source, but were estimated to be less than LAeq 30 dB, which is insignificant in terms of any applicable criterion.



WHITEHAVEN COAL

WHITEHAVEN CHPP – MONTHLY MONITORING SUMMARY



| | | |
|---|--|---|
|  WHITEHAVEN COAL | <p align="center">Figure 1 Gunnedah CHPP EPL3637 Monitoring Locations</p> | <p>0 250 500 ─────────── Meters</p> |
| <p>Datum MGA2020 Zone 56 Author O.Hulbert Image Nov-22 Date Jan-23 Size/Scale 1:13000</p> | | <p>● CHPP_EPL_Sites_Feb23</p> |



WHITEHAVEN CHPP – MONTHLY MONITORING SUMMARY

Site Information

EPL No: 3637

EPA Website Link: <http://www.epa.nsw.gov.au/prpoeoapp/ViewPOEOLicence.aspx?DOCID=33514&SYSUID=1&LICID=3637>

Licensee: Whitehaven Coal Mining Limited

Licensee Address: Boggabri Road, Gunnedah NSW 2380

EPL Monitoring Points: See Figure 1 below

Sampling Period: August 2024

Obtained Date: 10th September 2024

Publication Date: 18th September 2024

Table 1 - No Pollutant Limits Apply

| EPL ID | Pollutant | Units of Measure | Monitoring Frequency | No. of Measurements for the Month | Date Sampled | Date Obtained | Min Value | Mean Value | Median Value | Max or Only Value |
|--------|--------------------------------|-------------------------|----------------------|-----------------------------------|--|---------------------------------------|-----------|------------|--------------|-------------------|
| 3 | Solid Particles | g/m ² /month | Continuous | 1 | 09/08/2024 | 30/08/2024 | - | - | - | 0.4 |
| 11 | PM ₁₀ Kendo | µg/m ³ | Every 6 days | 5 | 03/08/2024 09/08/2024 15/08/2024 21/08/2024 27/08/2024 | 10/09/2024 (Last sampled received) | 3.1 | 9.82 | 11.1 | 16.6 |
| 12 | PM ₁₀ Olive View | µg/m ³ | Every 6 days | 5 | 03/08/2024 09/08/2024 15/08/2024 21/08/2024 27/08/2024 | 10/09/2024 (Last sampled received) | 4.9 | 11.8 | 9.1 | 22.0 |
| 6 | Conductivity | µs/cm | Each overflow event | 0 | | | - | - | - | - |
| | Oil and Grease | mg/L | | | | | - | - | - | - |
| | Total Organic Carbon | mg/L | | | | | - | - | - | - |
| | Total Suspended Solids | mg/L | | | | | - | - | - | - |
| | pH | pH | | | | | - | - | - | - |
| 7 | Conductivity | µs/cm | Quarterly | 1 | 28/08/2024 | 05/09/2024 | - | - | - | 1850 |
| | Oil and Grease | mg/L | | | | | - | - | - | <5 |
| | Total Organic Carbon | mg/L | | | | | - | - | - | 8 |



WHITEHAVEN CHPP – MONTHLY MONITORING SUMMARY

| EPL ID | Pollutant | Units of Measure | Monitoring Frequency | No. of Measurements for the Month | Date Sampled | Date Obtained | Min Value | Mean Value | Median Value | Max or Only Value |
|--------|------------------------|------------------|----------------------|-----------------------------------|--------------|---------------|-----------|------------|--------------|-------------------|
| | Total Suspended Solids | mg/L | | | | | - | - | - | 31 |
| | pH | pH | | | | | - | - | - | 7.69 |

Table 2 – Groundwater Monitoring (Quarterly – No Limits apply)

| EPL ID | Pollutant | Units of Measure | Monitoring Frequency | No. of Samples for the Period | Date Sampled | Date Obtained | Min Value | Mean Value | Median Value | Max or Only Value |
|--------|----------------------|------------------|----------------------|-------------------------------|--------------|---------------|-----------|------------|--------------|-------------------|
| 8 | Ammonia | mg/L | Quarterly (P1) | 0 | - | - | - | - | - | - |
| | Bicarbonate | mg/L | | | | | - | - | - | - |
| | Calcium | mg/L | | | | | - | - | - | - |
| | Chloride | mg/L | | | | | - | - | - | - |
| | Conductivity | µs/cm | | | | | - | - | - | - |
| | Lead | mg/L | | | | | - | - | - | - |
| | Magnesium | mg/L | | | | | - | - | - | - |
| | Nitrate | mg/L | | | | | - | - | - | - |
| | Potassium | mg/L | | | | | - | - | - | - |
| | Sodium | mg/L | | | | | - | - | - | - |
| | Standing Water Level | m | | | | | - | - | - | - |
| | Sulphate | mg/L | | | | | - | - | - | - |
| | pH | pH | | | | | - | - | - | - |
| 9 | Ammonia | mg/L | Quarterly (P2) | 0 | - | - | - | - | - | - |
| | Bicarbonate | mg/L | | | | | - | - | - | - |
| | Calcium | mg/L | | | | | - | - | - | - |
| | Chloride | mg/L | | | | | - | - | - | - |



WHITEHAVEN CHPP – MONTHLY MONITORING SUMMARY

| EPL ID | Pollutant | Units of Measure | Monitoring Frequency | No. of Samples for the Period | Date Sampled | Date Obtained | Min Value | Mean Value | Median Value | Max or Only Value |
|--------|----------------------|------------------|----------------------|-------------------------------|--------------|---------------|-----------|------------|--------------|-------------------|
| | Conductivity | µs/cm | | | | | - | - | - | - |
| | Lead | mg/L | | | | | - | - | - | - |
| | Magnesium | mg/L | | | | | - | - | - | - |
| | Nitrate | mg/L | | | | | - | - | - | - |
| | Potassium | mg/L | | | | | - | - | - | - |
| | Sodium | mg/L | | | | | - | - | - | - |
| | Standing Water Level | M | | | | | - | - | - | - |
| | Sulphate | mg/L | | | | | - | - | - | - |
| | pH | pH | | | | | - | - | - | - |
| 10 | Ammonia | mg/L | Quarterly (P3) | 0 | - | - | - | - | - | - |
| | Bicarbonate | mg/L | | | | | - | - | - | - |
| | Calcium | mg/L | | | | | - | - | - | - |
| | Chloride | mg/L | | | | | - | - | - | - |
| | Conductivity | µs/cm | | | | | - | - | - | - |
| | Lead | mg/L | | | | | - | - | - | - |
| | Magnesium | mg/L | | | | | - | - | - | - |
| | Nitrate | mg/L | | | | | - | - | - | - |
| | Potassium | mg/L | | | | | - | - | - | - |
| | Sodium | mg/L | | | | | - | - | - | - |
| | Standing Water Level | M | | | | | - | - | - | - |
| | Sulphate | mg/L | | | | | - | - | - | - |
| | pH | pH | | | | | - | - | - | - |



WHITEHAVEN CHPP – MONTHLY MONITORING SUMMARY

Table 3 – Monitoring (Quarterly Noise – Limits Apply)

| EPL ID | Date | Measurement Period | Measured levels – CHPP – dB(A) | | Limit(s)- dB(A) | Wind speed (m/s) | Observations | (Potential) Non-compliance /breach |
|--------|------|--------------------|--------------------------------|-----------------|-----------------|------------------|--------------|------------------------------------|
| | | | LA1, 1 minute | LAeq, 15 minute | | | | |
| N1 | - | 15 mins day | - | - | 35 | - | - | - |
| | - | 15 mins evening | - | - | 35 | - | - | |
| | | 15 mins night | - | - | 35 | - | - | |
| | | 1 min night | - | - | 45 | - | - | |

Notes:

dB(A): The overall level of a sound is usually expressed in terms of dBA, which is measured using a sound level meter with an “A-weighting” filter. This is an electronic filter having a frequency response corresponding approximately to that of human hearing.

LAeq, 15 minute: The A-weighted equivalent noise level (basically the average noise level). It is defined as the steady sound level that contains the same amount of acoustical energy as the corresponding time-varying sound, in this instance over a period of 15 minutes.

LA1, 1 minute: The noise level exceeded for 1% of the 15 minute interval.

I/A: When site noise is noted as inaudible (I/A), no site noise was audible at the monitoring location.

Not Measurable (NM): indicates that some site noise was audible, but indeterminate due to one of the following reasons:

- site noise levels were insignificant and unlikely, in many cases, to be even noticed; or
- site noise levels were masked by another relatively loud noise source, but were estimated to be less than LAeq 30 dB, which is insignificant in terms of any applicable criterion.



WHITEHAVEN COAL

WHITEHAVEN CHPP – MONTHLY MONITORING SUMMARY



| | | |
|---|--|---|
|  WHITEHAVEN COAL | <p align="center">Figure 1 Gunnedah CHPP EPL3637 Monitoring Locations</p> | <p>0 250 500 ─────────── Meters</p> |
| <p>Datum MGA2020 Zone 56 Author O.Hulbert Image Nov-22 Date Jan-23 Size/Scale 1:13000</p> | | <p>● CHPP_EPL_Sites_Feb23</p> |



WHITEHAVEN CHPP – MONTHLY MONITORING SUMMARY

Site Information

EPL No: 3637

EPA Website Link: <http://www.epa.nsw.gov.au/prpoeoapp/ViewPOEOLicence.aspx?DOCID=33514&SYSUID=1&LICID=3637>

Licensee: Whitehaven Coal Mining Limited

Licensee Address: Boggabri Road, Gunnedah NSW 2380

EPL Monitoring Points: See Figure 1 below

Sampling Period: September 2024

Obtained Date: 09th October 2024

Publication Date: 16th October 2024

Table 1 - No Pollutant Limits Apply

| EPL ID | Pollutant | Units of Measure | Monitoring Frequency | No. of Measurements for the Month | Date Sampled | Date Obtained | Min Value | Mean Value | Median Value | Max or Only Value |
|--------|--------------------------------|-------------------------|----------------------|-----------------------------------|--|---------------------------------------|-----------|------------|--------------|-------------------|
| 3 | Solid Particles | g/m ² /month | Continuous | 1 | 09/09/2024 | 23/09/2024 | - | - | - | 0.6 |
| 11 | PM ₁₀ Kendo | µg/m ³ | Every 6 days | 5 | 02/09/2024 08/09/2024 14/09/2024 20/09/2024 26/09/2024 | 09/10/2024 (Last sampled received) | 6.1 | 11.56 | 12.5 | 15.6 |
| 12 | PM ₁₀ Olive View | µg/m ³ | Every 6 days | 5 | 02/09/2024 08/09/2024 14/09/2024 20/09/2024 26/09/2024 | 09/10/2024 (Last sampled received) | 3.8 | 11.38 | 11.7 | 16.1 |
| 6 | Conductivity | µs/cm | Each overflow event | 0 | - | - | - | - | - | - |
| | Oil and Grease | mg/L | | | | | - | - | - | - |
| | Total Organic Carbon | mg/L | | | | | - | - | - | - |
| | Total Suspended Solids | mg/L | | | | | - | - | - | - |
| | pH | pH | | | | | - | - | - | - |
| 7 | Conductivity | µs/cm | Quarterly | 0 | - | - | - | - | - | - |
| | Oil and Grease | mg/L | | | | | - | - | - | - |
| | Total Organic Carbon | mg/L | | | | | - | - | - | - |



WHITEHAVEN CHPP – MONTHLY MONITORING SUMMARY

| EPL ID | Pollutant | Units of Measure | Monitoring Frequency | No. of Measurements for the Month | Date Sampled | Date Obtained | Min Value | Mean Value | Median Value | Max or Only Value |
|--------|------------------------|------------------|----------------------|-----------------------------------|--------------|---------------|-----------|------------|--------------|-------------------|
| | Total Suspended Solids | mg/L | | | | | - | - | - | - |
| | pH | pH | | | | | - | - | - | - |

Table 2 – Groundwater Monitoring (Quarterly – No Limits apply)

| EPL ID | Pollutant | Units of Measure | Monitoring Frequency | No. of Samples for the Period | Date Sampled | Date Obtained | Min Value | Mean Value | Median Value | Max or Only Value |
|--------|----------------------|------------------|----------------------|-------------------------------|--------------|---------------|-----------|------------|--------------|-------------------|
| 8 | Ammonia | mg/L | Quarterly (P1) | 1 | 06/09/2024 | 17/09/2024 | - | - | - | 0.85 |
| | Bicarbonate | mg/L | | | | | - | - | - | 1280 |
| | Calcium | mg/L | | | | | - | - | - | 46 |
| | Chloride | mg/L | | | | | - | - | - | 1900 |
| | Conductivity | µs/cm | | | | | - | - | - | 9730 |
| | Lead | mg/L | | | | | - | - | - | <0.001 |
| | Magnesium | mg/L | | | | | - | - | - | 182 |
| | Nitrate | mg/L | | | | | - | - | - | 0.33 |
| | Potassium | mg/L | | | | | - | - | - | 24 |
| | Sodium | mg/L | | | | | - | - | - | 2060 |
| | Standing Water Level | m | | | | | - | - | - | 6.45 |
| | Sulphate | mg/L | | | | | - | - | - | 1340 |
| pH | pH | - | - | - | 8.08 | | | | | |
| 9 | Ammonia | mg/L | Quarterly (P2) | 1 | 06/09/2024 | 17/09/2024 | - | - | - | 0.86 |
| | Bicarbonate | mg/L | | | | | - | - | - | 993 |
| | Calcium | mg/L | | | | | - | - | - | 183 |
| | Chloride | mg/L | | | | | - | - | - | 1090 |



WHITEHAVEN CHPP – MONTHLY MONITORING SUMMARY

| EPL ID | Pollutant | Units of Measure | Monitoring Frequency | No. of Samples for the Period | Date Sampled | Date Obtained | Min Value | Mean Value | Median Value | Max or Only Value |
|--------|----------------------|------------------|----------------------|-------------------------------|--------------|---------------|-----------|------------|--------------|-------------------|
| | Conductivity | µs/cm | | | | | - | - | - | 5690 |
| | Lead | mg/L | | | | | - | - | - | <0.001 |
| | Magnesium | mg/L | | | | | - | - | - | 227 |
| | Nitrate | mg/L | | | | | - | - | - | 0.06 |
| | Potassium | mg/L | | | | | - | - | - | 121 |
| | Sodium | mg/L | | | | | - | - | - | 689 |
| | Standing Water Level | M | | | | | - | - | - | 1.63 |
| | Sulphate | mg/L | | | | | - | - | - | 679 |
| | pH | pH | | | | | - | - | - | 7.34 |
| 10 | Ammonia | mg/L | Quarterly (P3) | 1 | 06/09/2024 | 17/09/2024 | - | - | - | 0.11 |
| | Bicarbonate | mg/L | | | | | - | - | - | 765 |
| | Calcium | mg/L | | | | | - | - | - | 166 |
| | Chloride | mg/L | | | | | - | - | - | 1370 |
| | Conductivity | µs/cm | | | | | - | - | - | 5830 |
| | Lead | mg/L | | | | | - | - | - | <0.001 |
| | Magnesium | mg/L | | | | | - | - | - | 218 |
| | Nitrate | mg/L | | | | | - | - | - | 10.9 |
| | Potassium | mg/L | | | | | - | - | - | 61 |
| | Sodium | mg/L | | | | | - | - | - | 699 |
| | Standing Water Level | M | | | | | - | - | - | 1.16 |
| | Sulphate | mg/L | | | | | - | - | - | 253 |
| | pH | pH | | | | | - | - | - | 7.30 |



WHITEHAVEN CHPP – MONTHLY MONITORING SUMMARY

Table 3 – Monitoring (Quarterly Noise – Limits Apply)

| EPL ID | Date | Measurement Period | Measured levels – CHPP – dB(A) | | Limit(s)- dB(A) | Wind speed (m/s) | Observations | (Potential) Non-compliance /breach |
|--------|------------|--------------------|--------------------------------|-----------------|-----------------|------------------|---|------------------------------------|
| | | | LA1, 1 minute | LAeq, 15 minute | | | | |
| N1 | 05/09/2024 | 15 mins day | - | I/A | 35 | 2.8 | Site Related Noise Inaudible Wind 40-46, Traffic 35-43, Birds 61 | No |
| | 05/09/2024 | 15 mins evening | - | N/M | 35 | Calm | General site activity faintly audible, Traffic 35-42, Insects 44-46 | |
| | | 15 mins night | - | 30 | 35 | Calm | Dozer operations 30-33, General site activity 27-30, Insects 43-46, Traffic 35-51 | |
| | | 1 min night | 41 | - | 45 | Calm | | |

Notes:

dB(A): The overall level of a sound is usually expressed in terms of dBA, which is measured using a sound level meter with an “A-weighting” filter. This is an electronic filter having a frequency response corresponding approximately to that of human hearing.

LAeq, 15 minute: The A-weighted equivalent noise level (basically the average noise level). It is defined as the steady sound level that contains the same amount of acoustical energy as the corresponding time-varying sound, in this instance over a period of 15 minutes.

LA1, 1 minute: The noise level exceeded for 1% of the 15 minute interval.

I/A: When site noise is noted as inaudible (I/A), no site noise was audible at the monitoring location.

Not Measurable (NM): indicates that some site noise was audible, but indeterminate due to one of the following reasons:

- site noise levels were insignificant and unlikely, in many cases, to be even noticed; or
- site noise levels were masked by another relatively loud noise source, but were estimated to be less than LAeq 30 dB, which is insignificant in terms of any applicable criterion.



WHITEHAVEN COAL

WHITEHAVEN CHPP – MONTHLY MONITORING SUMMARY



| | | |
|---|--|---|
|  WHITEHAVEN COAL | <p align="center">Figure 1 Gunnedah CHPP EPL3637 Monitoring Locations</p> | <p>0 250 500 ─────────── Meters</p> |
| <p>Datum MGA2020 Zone 56 Author O.Hulbert Image Nov-22 Date Jan-23 Size/Scale 1:13000</p> | | <p>● CHPP_EPL_Sites_Feb23</p> |



WHITEHAVEN CHPP – MONTHLY MONITORING SUMMARY

Site Information

EPL No: 3637

EPA Website Link: <http://www.epa.nsw.gov.au/prpoeoapp/ViewPOEOLicence.aspx?DOCID=33514&SYSUID=1&LICID=3637>

Licensee: Whitehaven Coal Mining Limited

Licensee Address: Boggabri Road, Gunnedah NSW 2380

EPL Monitoring Points: See Figure 1 below

Sampling Period: October 2024

Obtained Date: 07th November 2024

Publication Date: 13th November 2024

Table 1 - No Pollutant Limits Apply

| EPL ID | Pollutant | Units of Measure | Monitoring Frequency | No. of Measurements for the Month | Date Sampled | Date Obtained | Min Value | Mean Value | Median Value | Max or Only Value |
|--------|--------------------------------|-------------------------|----------------------|-----------------------------------|--|---------------------------------------|-----------|------------|--------------|-------------------|
| 3 | Solid Particles | g/m ² /month | Continuous | 1 | 04/10/2024 | 31/10/2024 | - | - | - | 0.5 |
| 11 | PM ₁₀ Kendo | µg/m ³ | Every 6 days | 5 | 02/10/2024 08/10/2024 14/10/2024 20/10/2024 26/10/2024 | 07/11/2024 (Last sampled received) | 6.8 | 12.42 | 9.2 | 26.1 |
| 12 | PM ₁₀ Olive View | µg/m ³ | Every 6 days | 5 | 02/10/2024 08/10/2024 14/10/2024 20/10/2024 26/10/2024 | 07/11/2024 (Last sampled received) | 5.0 | 9.74 | 9.4 | 17.2 |
| 6 | Conductivity | µs/cm | Each overflow event | 0 | - | - | - | - | - | - |
| | Oil and Grease | mg/L | | | | | - | - | - | - |
| | Total Organic Carbon | mg/L | | | | | - | - | - | - |
| | Total Suspended Solids | mg/L | | | | | - | - | - | - |
| | pH | pH | | | | | - | - | - | - |
| 7 | Conductivity | µs/cm | Quarterly | 0 | - | - | - | - | - | - |
| | Oil and Grease | mg/L | | | | | - | - | - | - |
| | Total Organic Carbon | mg/L | | | | | - | - | - | - |



WHITEHAVEN CHPP – MONTHLY MONITORING SUMMARY

| EPL ID | Pollutant | Units of Measure | Monitoring Frequency | No. of Measurements for the Month | Date Sampled | Date Obtained | Min Value | Mean Value | Median Value | Max or Only Value |
|--------|------------------------|------------------|----------------------|-----------------------------------|--------------|---------------|-----------|------------|--------------|-------------------|
| | Total Suspended Solids | mg/L | | | | | - | - | - | - |
| | pH | pH | | | | | - | - | - | - |

Table 2 – Groundwater Monitoring (Quarterly – No Limits apply)

| EPL ID | Pollutant | Units of Measure | Monitoring Frequency | No. of Samples for the Period | Date Sampled | Date Obtained | Min Value | Mean Value | Median Value | Max or Only Value |
|--------|----------------------|------------------|----------------------|-------------------------------|--------------|---------------|-----------|------------|--------------|-------------------|
| 8 | Ammonia | mg/L | Quarterly (P1) | 0 | - | - | - | - | - | - |
| | Bicarbonate | mg/L | | | | | - | - | - | - |
| | Calcium | mg/L | | | | | - | - | - | - |
| | Chloride | mg/L | | | | | - | - | - | - |
| | Conductivity | µs/cm | | | | | - | - | - | - |
| | Lead | mg/L | | | | | - | - | - | - |
| | Magnesium | mg/L | | | | | - | - | - | - |
| | Nitrate | mg/L | | | | | - | - | - | - |
| | Potassium | mg/L | | | | | - | - | - | - |
| | Sodium | mg/L | | | | | - | - | - | - |
| | Standing Water Level | m | | | | | - | - | - | - |
| | Sulphate | mg/L | | | | | - | - | - | - |
| | pH | pH | | | | | - | - | - | - |
| 9 | Ammonia | mg/L | Quarterly (P2) | 0 | - | - | - | - | - | - |
| | Bicarbonate | mg/L | | | | | - | - | - | - |
| | Calcium | mg/L | | | | | - | - | - | - |
| | Chloride | mg/L | | | | | - | - | - | - |



WHITEHAVEN CHPP – MONTHLY MONITORING SUMMARY

| EPL ID | Pollutant | Units of Measure | Monitoring Frequency | No. of Samples for the Period | Date Sampled | Date Obtained | Min Value | Mean Value | Median Value | Max or Only Value |
|--------|----------------------|------------------|----------------------|-------------------------------|--------------|---------------|-----------|------------|--------------|-------------------|
| | Conductivity | µs/cm | | | | | - | - | - | - |
| | Lead | mg/L | | | | | - | - | - | - |
| | Magnesium | mg/L | | | | | - | - | - | - |
| | Nitrate | mg/L | | | | | - | - | - | - |
| | Potassium | mg/L | | | | | - | - | - | - |
| | Sodium | mg/L | | | | | - | - | - | - |
| | Standing Water Level | M | | | | | - | - | - | - |
| | Sulphate | mg/L | | | | | - | - | - | - |
| | pH | pH | | | | | - | - | - | - |
| 10 | Ammonia | mg/L | Quarterly (P3) | 0 | - | - | - | - | - | - |
| | Bicarbonate | mg/L | | | | | - | - | - | - |
| | Calcium | mg/L | | | | | - | - | - | - |
| | Chloride | mg/L | | | | | - | - | - | - |
| | Conductivity | µs/cm | | | | | - | - | - | - |
| | Lead | mg/L | | | | | - | - | - | - |
| | Magnesium | mg/L | | | | | - | - | - | - |
| | Nitrate | mg/L | | | | | - | - | - | - |
| | Potassium | mg/L | | | | | - | - | - | - |
| | Sodium | mg/L | | | | | - | - | - | - |
| | Standing Water Level | M | | | | | - | - | - | - |
| | Sulphate | mg/L | | | | | - | - | - | - |
| | pH | pH | | | | | - | - | - | - |



WHITEHAVEN CHPP – MONTHLY MONITORING SUMMARY

Table 3 – Monitoring (Quarterly Noise – Limits Apply)

| EPL ID | Date | Measurement Period | Measured levels – CHPP – dB(A) | | Limit(s)- dB(A) | Wind speed (m/s) | Observations | (Potential) Non-compliance /breach |
|--------|------------|--------------------|--------------------------------|-----------------|-----------------|------------------|--------------|------------------------------------|
| | | | LA1, 1 minute | LAeq, 15 minute | | | | |
| N1 | 05/09/2024 | 15 mins day | - | - | 35 | - | - | - |
| | 05/09/2024 | 15 mins evening | - | - | 35 | - | - | |
| | | 15 mins night | - | - | 35 | - | - | |
| | | 1 min night | - | - | 45 | - | - | |

Notes:

dB(A): The overall level of a sound is usually expressed in terms of dBA, which is measured using a sound level meter with an “A-weighting” filter. This is an electronic filter having a frequency response corresponding approximately to that of human hearing.

LAeq, 15 minute: The A-weighted equivalent noise level (basically the average noise level). It is defined as the steady sound level that contains the same amount of acoustical energy as the corresponding time-varying sound, in this instance over a period of 15 minutes.

LA1, 1 minute: The noise level exceeded for 1% of the 15 minute interval.

I/A: When site noise is noted as inaudible (I/A), no site noise was audible at the monitoring location.

Not Measurable (NM): indicates that some site noise was audible, but indeterminate due to one of the following reasons:

- site noise levels were insignificant and unlikely, in many cases, to be even noticed; or
- site noise levels were masked by another relatively loud noise source, but were estimated to be less than LAeq 30 dB, which is insignificant in terms of any applicable criterion.



WHITEHAVEN COAL

WHITEHAVEN CHPP – MONTHLY MONITORING SUMMARY



| | | |
|---|--|---|
|  WHITEHAVEN COAL | <p align="center">Figure 1 Gunnedah CHPP EPL3637 Monitoring Locations</p> | <p>0 250 500 ─────────── Meters</p> |
| <p>Datum MGA2020 Zone 56 Author O.Hulbert Image Nov-22 Date Jan-23 Size/Scale 1:13000</p> | | <p>● CHPP_EPL_Sites_Feb23</p> |



WHITEHAVEN CHPP – MONTHLY MONITORING SUMMARY

Site Information

EPL No: 3637

EPA Website Link: <http://www.epa.nsw.gov.au/prpoeoapp/ViewPOEOLicence.aspx?DOCID=33514&SYSUID=1&LICID=3637>

Licensee: Whitehaven Coal Mining Limited

Licensee Address: Boggabri Road, Gunnedah NSW 2380

EPL Monitoring Points: See Figure 1 below

Sampling Period: November 2024

Obtained Date: 09th December 2024

Publication Date: 11th December 2024

Table 1 - No Pollutant Limits Apply

| EPL ID | Pollutant | Units of Measure | Monitoring Frequency | No. of Measurements for the Month | Date Sampled | Date Obtained | Min Value | Mean Value | Median Value | Max or Only Value |
|--------|--------------------------------|-------------------------|----------------------|-----------------------------------|--|---------------------------------------|-----------|------------|--------------|-------------------|
| 3 | Solid Particles | g/m ² /month | Continuous | 1 | 05/11/2024 | 06/12/2024 | - | - | - | 1.3 |
| 11 | PM ₁₀ Kendo | µg/m ³ | Every 6 days | 5 | 01/11/2024 07/11/2024 13/11/2024 19/11/2024 25/11/2024 | 07/11/2024 (Last sampled received) | 8.5 | 17.46 | 14.6 | 30.0 |
| 12 | PM ₁₀ Olive View | µg/m ³ | Every 6 days | 5 | 01/11/2024 07/11/2024 13/11/2024 19/11/2024 25/11/2024 | 07/11/2024 (Last sampled received) | 9.5 | 19.26 | 15.8 | 29.2 |
| 6 | Conductivity | µs/cm | Each overflow event | 0 | | | - | - | - | - |
| | Oil and Grease | mg/L | | | | | - | - | - | - |
| | Total Organic Carbon | mg/L | | | | | - | - | - | - |
| | Total Suspended Solids | mg/L | | | | | - | - | - | - |
| | pH | pH | | | | | - | - | - | - |
| 7 | Conductivity | µs/cm | Quarterly | 1 | 19/11/2024 | 29/11/2024 | - | - | - | 1850 |
| | Oil and Grease | mg/L | | | | | - | - | - | <5 |
| | Total Organic Carbon | mg/L | | | | | - | - | - | 19 |



WHITEHAVEN CHPP – MONTHLY MONITORING SUMMARY

| EPL ID | Pollutant | Units of Measure | Monitoring Frequency | No. of Measurements for the Month | Date Sampled | Date Obtained | Min Value | Mean Value | Median Value | Max or Only Value |
|--------|------------------------|------------------|----------------------|-----------------------------------|--------------|---------------|-----------|------------|--------------|-------------------|
| | Total Suspended Solids | mg/L | | | | | - | - | - | 66 |
| | pH | pH | | | | | - | - | - | 8.18 |

Table 2 – Groundwater Monitoring (Quarterly – No Limits apply)

| EPL ID | Pollutant | Units of Measure | Monitoring Frequency | No. of Samples for the Period | Date Sampled | Date Obtained | Min Value | Mean Value | Median Value | Max or Only Value |
|--------|----------------------|------------------|----------------------|-------------------------------|--------------|---------------|-----------|------------|--------------|-------------------|
| 8 | Ammonia | mg/L | Quarterly (P1) | 0 | - | - | - | - | - | - |
| | Bicarbonate | mg/L | | | | | - | - | - | - |
| | Calcium | mg/L | | | | | - | - | - | - |
| | Chloride | mg/L | | | | | - | - | - | - |
| | Conductivity | µs/cm | | | | | - | - | - | - |
| | Lead | mg/L | | | | | - | - | - | - |
| | Magnesium | mg/L | | | | | - | - | - | - |
| | Nitrate | mg/L | | | | | - | - | - | - |
| | Potassium | mg/L | | | | | - | - | - | - |
| | Sodium | mg/L | | | | | - | - | - | - |
| | Standing Water Level | m | | | | | - | - | - | - |
| | Sulphate | mg/L | | | | | - | - | - | - |
| | pH | pH | | | | | - | - | - | - |
| 9 | Ammonia | mg/L | Quarterly (P2) | 0 | - | - | - | - | - | - |
| | Bicarbonate | mg/L | | | | | - | - | - | - |
| | Calcium | mg/L | | | | | - | - | - | - |
| | Chloride | mg/L | | | | | - | - | - | - |



WHITEHAVEN CHPP – MONTHLY MONITORING SUMMARY

| EPL ID | Pollutant | Units of Measure | Monitoring Frequency | No. of Samples for the Period | Date Sampled | Date Obtained | Min Value | Mean Value | Median Value | Max or Only Value |
|--------|----------------------|------------------|----------------------|-------------------------------|--------------|---------------|-----------|------------|--------------|-------------------|
| | Conductivity | µs/cm | | | | | - | - | - | - |
| | Lead | mg/L | | | | | - | - | - | - |
| | Magnesium | mg/L | | | | | - | - | - | - |
| | Nitrate | mg/L | | | | | - | - | - | - |
| | Potassium | mg/L | | | | | - | - | - | - |
| | Sodium | mg/L | | | | | - | - | - | - |
| | Standing Water Level | M | | | | | - | - | - | - |
| | Sulphate | mg/L | | | | | - | - | - | - |
| | pH | pH | | | | | - | - | - | - |
| 10 | Ammonia | mg/L | Quarterly (P3) | 0 | - | - | - | - | - | - |
| | Bicarbonate | mg/L | | | | | - | - | - | - |
| | Calcium | mg/L | | | | | - | - | - | - |
| | Chloride | mg/L | | | | | - | - | - | - |
| | Conductivity | µs/cm | | | | | - | - | - | - |
| | Lead | mg/L | | | | | - | - | - | - |
| | Magnesium | mg/L | | | | | - | - | - | - |
| | Nitrate | mg/L | | | | | - | - | - | - |
| | Potassium | mg/L | | | | | - | - | - | - |
| | Sodium | mg/L | | | | | - | - | - | - |
| | Standing Water Level | M | | | | | - | - | - | - |
| | Sulphate | mg/L | | | | | - | - | - | - |
| | pH | pH | | | | | - | - | - | - |



WHITEHAVEN CHPP – MONTHLY MONITORING SUMMARY

Table 3 – Monitoring (Quarterly Noise – Limits Apply)

| EPL ID | Date | Measurement Period | Measured levels – CHPP – dB(A) | | Limit(s)- dB(A) | Wind speed (m/s) | Observations | (Potential) Non-compliance /breach |
|--------|------------|--------------------|--------------------------------|-----------------|-----------------|------------------|--------------|------------------------------------|
| | | | LA1, 1 minute | LAeq, 15 minute | | | | |
| N1 | 05/09/2024 | 15 mins day | - | - | 35 | - | - | - |
| | 05/09/2024 | 15 mins evening | - | - | 35 | - | - | |
| | | 15 mins night | - | - | 35 | - | - | |
| | | 1 min night | - | - | 45 | - | - | |

Notes:

dB(A): The overall level of a sound is usually expressed in terms of dBA, which is measured using a sound level meter with an “A-weighting” filter. This is an electronic filter having a frequency response corresponding approximately to that of human hearing.

LAeq, 15 minute: The A-weighted equivalent noise level (basically the average noise level). It is defined as the steady sound level that contains the same amount of acoustical energy as the corresponding time-varying sound, in this instance over a period of 15 minutes.

LA1, 1 minute: The noise level exceeded for 1% of the 15 minute interval.

I/A: When site noise is noted as inaudible (I/A), no site noise was audible at the monitoring location.

Not Measurable (NM): indicates that some site noise was audible, but indeterminate due to one of the following reasons:

- site noise levels were insignificant and unlikely, in many cases, to be even noticed; or
- site noise levels were masked by another relatively loud noise source, but were estimated to be less than LAeq 30 dB, which is insignificant in terms of any applicable criterion.



WHITEHAVEN CHPP – MONTHLY MONITORING SUMMARY



Source: Earth, Water, and Air Geographics, and the GIS User Community


 **WHITEHAVEN COAL**

Datum MGA2020 Zone 56 Author O.Hulbert

Image Nov-22 Date Jan-23 Size/Scale 1:13000

Figure 1
Gunnedah CHPP EPL3637
Monitoring Locations

0 250 500
 Meters

 CHPP_EPL_Sites_Feb23



WHITEHAVEN CHPP – MONTHLY MONITORING SUMMARY

Site Information

EPL No: 3637

EPA Website Link: <http://www.epa.nsw.gov.au/prpoeoapp/ViewPOEOLicence.aspx?DOCID=33514&SYSUID=1&LICID=3637>

Licensee: Whitehaven Coal Mining Limited

Licensee Address: Boggabri Road, Gunnedah NSW 2380

EPL Monitoring Points: See Figure 1 below

Sampling Period: December 2024

Obtained Date: 14th January 2025

Publication Date: 16th January 2025

Table 1 - No Pollutant Limits Apply

| EPL ID | Pollutant | Units of Measure | Monitoring Frequency | No. of Measurements for the Month | Date Sampled | Date Obtained | Min Value | Mean Value | Median Value | Max or Only Value |
|--------|--------------------------------|-------------------------|----------------------|-----------------------------------|--|---------------------------------------|-----------|------------|--------------|-------------------|
| 3 | Solid Particles | g/m ² /month | Continuous | 1 | 06/12/2024 | 13/01/2025 | - | - | - | 2.3 |
| 11 | PM ₁₀ Kendo | µg/m ³ | Every 6 days | 6 | 01/12/2024 07/12/2024 13/12/2024 19/12/2024 25/12/2024 31/12/2024 | 14/01/2025 (Last sampled received) | 7.2 | 12.96 | 12.15 | 24.4 |
| 12 | PM ₁₀ Olive View | µg/m ³ | Every 6 days | 6 | 01/12/2024 07/12/2024 13/12/2024 19/12/2024 25/12/2024 31/12/2024 | 14/01/2025 (Last sampled received) | 10.4 | 15.32 | 13.65 | 26.6 |
| 6 | Conductivity | µs/cm | Each overflow event | 0 | - | - | - | - | - | - |
| | Oil and Grease | mg/L | | | | | - | - | - | - |
| | Total Organic Carbon | mg/L | | | | | - | - | - | - |
| | Total Suspended Solids | mg/L | | | | | - | - | - | - |
| | pH | pH | | | | | - | - | - | - |
| 7 | Conductivity | µs/cm | Quarterly | - | - | - | - | - | - | - |
| | Oil and Grease | mg/L | | | | | - | - | - | - |



WHITEHAVEN CHPP – MONTHLY MONITORING SUMMARY

| EPL ID | Pollutant | Units of Measure | Monitoring Frequency | No. of Measurements for the Month | Date Sampled | Date Obtained | Min Value | Mean Value | Median Value | Max or Only Value |
|--------|------------------------|------------------|----------------------|-----------------------------------|--------------|---------------|-----------|------------|--------------|-------------------|
| | Total Organic Carbon | mg/L | | | | | - | - | - | - |
| | Total Suspended Solids | mg/L | | | | | - | - | - | - |
| | pH | pH | | | | | - | - | - | - |

Table 2 – Groundwater Monitoring (Quarterly – No Limits apply)

| EPL ID | Pollutant | Units of Measure | Monitoring Frequency | No. of Samples for the Period | Date Sampled | Date Obtained | Min Value | Mean Value | Median Value | Max or Only Value |
|--------|----------------------|------------------|----------------------|-------------------------------|--------------|---------------|-----------|------------|--------------|-------------------|
| 8 | Ammonia | mg/L | Quarterly (P1) | 1 | 04/12/2024 | 12/12/2024 | - | - | - | <0.01 |
| | Bicarbonate | mg/L | | | | | - | - | - | 1310 |
| | Calcium | mg/L | | | | | - | - | - | 65 |
| | Chloride | mg/L | | | | | - | - | - | 2320 |
| | Conductivity | µs/cm | | | | | - | - | - | 10200 |
| | Lead | mg/L | | | | | - | - | - | <0.001 |
| | Magnesium | mg/L | | | | | - | - | - | 185 |
| | Nitrate | mg/L | | | | | - | - | - | 0.44 |
| | Potassium | mg/L | | | | | - | - | - | 26 |
| | Sodium | mg/L | | | | | - | - | - | 2090 |
| | Standing Water Level | m | | | | | - | - | - | 6.58 |
| | Sulphate | mg/L | | | | | - | - | - | 1560 |
| pH | pH | - | - | - | 7.82 | | | | | |
| 9 | Ammonia | mg/L | Quarterly (P2) | 1 | 04/12/2024 | 12/12/2024 | - | - | - | 2.04 |
| | Bicarbonate | mg/L | | | | | - | - | - | 910 |
| | Calcium | mg/L | | | | | - | - | - | 284 |



WHITEHAVEN CHPP – MONTHLY MONITORING SUMMARY

| EPL ID | Pollutant | Units of Measure | Monitoring Frequency | No. of Samples for the Period | Date Sampled | Date Obtained | Min Value | Mean Value | Median Value | Max or Only Value |
|--------|----------------------|------------------|----------------------|-------------------------------|--------------|---------------|-----------|------------|--------------|-------------------|
| | Chloride | mg/L | | | | | - | - | - | 1080 |
| | Conductivity | µs/cm | | | | | - | - | - | 5950 |
| | Lead | mg/L | | | | | - | - | - | <0.001 |
| | Magnesium | mg/L | | | | | - | - | - | 222 |
| | Nitrate | mg/L | | | | | - | - | - | 0.11 |
| | Potassium | mg/L | | | | | - | - | - | 115 |
| | Sodium | mg/L | | | | | - | - | - | 670 |
| | Standing Water Level | M | | | | | - | - | - | 1.80 |
| | Sulphate | mg/L | | | | | - | - | - | 620 |
| | pH | pH | | | | | - | - | - | 6.97 |
| 10 | Ammonia | mg/L | Quarterly (P3) | 1 | 04/12/2024 | 12/12/2024 | - | - | - | 0.23 |
| | Bicarbonate | mg/L | | | | | - | - | - | 748 |
| | Calcium | mg/L | | | | | - | - | - | 248 |
| | Chloride | mg/L | | | | | - | - | - | 1390 |
| | Conductivity | µs/cm | | | | | - | - | - | 6030 |
| | Lead | mg/L | | | | | - | - | - | <0.001 |
| | Magnesium | mg/L | | | | | - | - | - | 216 |
| | Nitrate | mg/L | | | | | - | - | - | 12.9 |
| | Potassium | mg/L | | | | | - | - | - | 59 |
| | Sodium | mg/L | | | | | - | - | - | 690 |
| | Standing Water Level | M | | | | | - | - | - | 1.24 |
| | Sulphate | mg/L | | | | | - | - | - | 290 |
| | pH | pH | | | | | - | - | - | 6.90 |



WHITEHAVEN CHPP – MONTHLY MONITORING SUMMARY

Table 3 – Monitoring (Quarterly Noise – Limits Apply)

| EPL ID | Date | Measurement Period | Measured levels – CHPP – dB(A) | | Limit(s)- dB(A) | Wind speed (m/s) | Observations | (Potential) Non-compliance /breach |
|--------|------------|--------------------|--------------------------------|-----------------|-----------------|------------------|--|------------------------------------|
| | | | LA1, 1 minute | LAeq, 15 minute | | | | |
| N1 | 02/12/2024 | 15 mins day | - | NM | 35 | 0.9 | operations faintly audible Traffic 40-44, Animals 48-54 Birds 50-69 | No |
| | 02/12/2024 | 15 mins evening | - | 34 | 35 | 0.4 | Insects 42-45, Traffic 38-42, Animals 52-55 Train horn 44-55 Dozer operations 33 General site activity 30-32 | |
| | | 15 mins night | - | 28 | 35 | 1.2 | Traffic 40-50, Insects 42-47, General site activity 25-30, Dozer operations 30-32 | |
| | | 1 min night | 32 | - | 45 | | | |

Notes:

dB(A): The overall level of a sound is usually expressed in terms of dBA, which is measured using a sound level meter with an “A-weighting” filter. This is an electronic filter having a frequency response corresponding approximately to that of human hearing.

LAeq, 15 minute: The A-weighted equivalent noise level (basically the average noise level). It is defined as the steady sound level that contains the same amount of acoustical energy as the corresponding time-varying sound, in this instance over a period of 15 minutes.

LA1, 1 minute: The noise level exceeded for 1% of the 15 minute interval.

I/A: When site noise is noted as inaudible (I/A), no site noise was audible at the monitoring location.

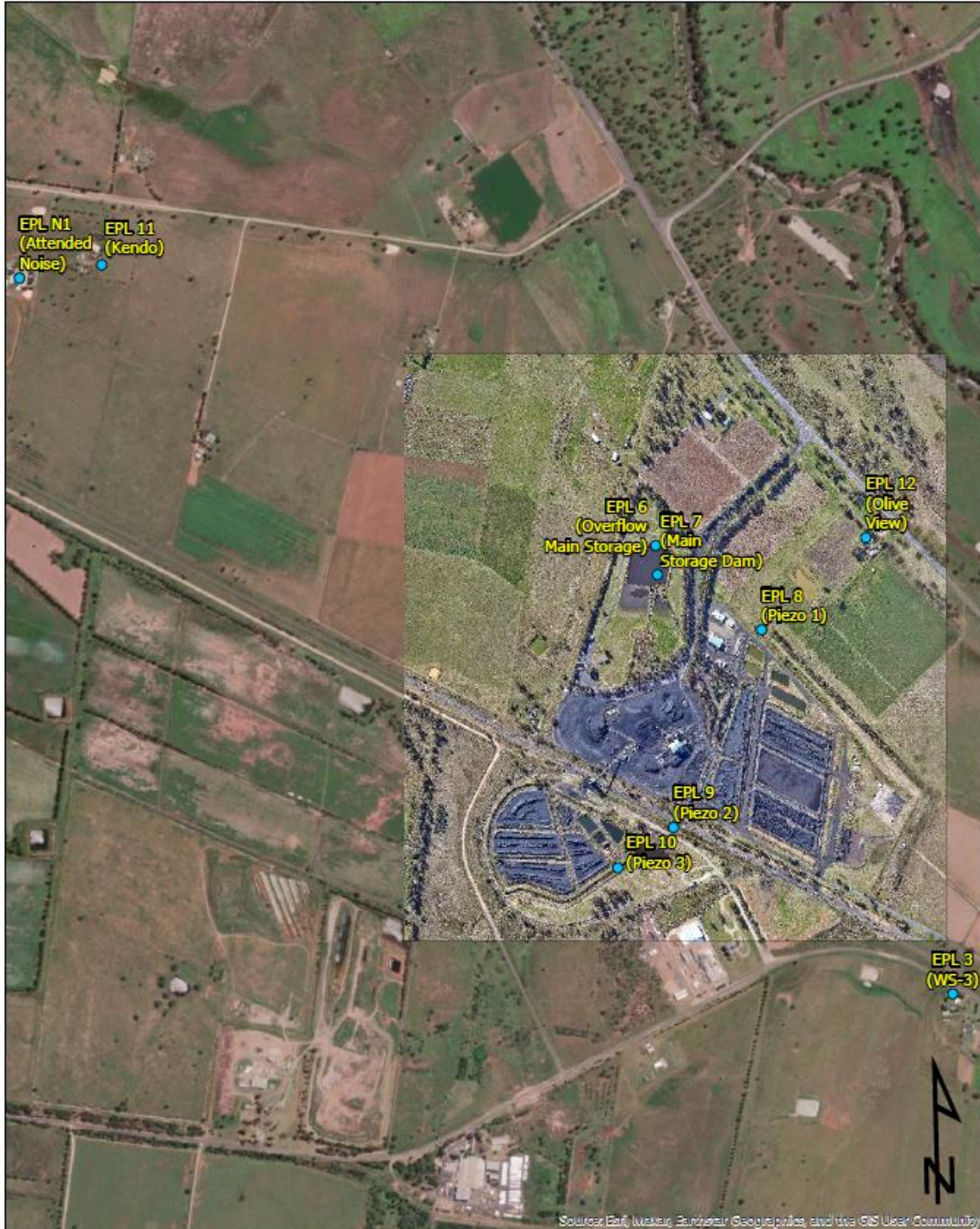
Not Measurable (NM): indicates that some site noise was audible, but indeterminate due to one of the following reasons:

- site noise levels were insignificant and unlikely, in many cases, to be even noticed; or
- site noise levels were masked by another relatively loud noise source, but were estimated to be less than LAeq 30 dB, which is insignificant in terms of any applicable criterion.



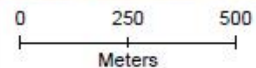
WHITEHAVEN COAL

WHITEHAVEN CHPP – MONTHLY MONITORING SUMMARY




WHITEHAVEN COAL
 Datum MGA2020 Zone 56 Author O.Hulbert
 Image Nov-22 Date Jan-23 Size/Scale 1:13000

Figure 1
Gunnedah CHPP EPL3637
Monitoring Locations



● CHPP_EPL_Sites_Feb23