



## WHITEHAVEN CHPP – MONTHLY MONITORING SUMMARY

### Site Information

EPL No: 3637

EPA Website Link: <http://www.epa.nsw.gov.au/prpoeoapp/ViewPOEOLicence.aspx?DOCID=33514&SYSUID=1&LICID=3637>

Licensee: Whitehaven Coal Mining Limited

Licensee Address: Boggabri Road, Gunnedah NSW 2380

EPL Monitoring Points: See Figure 1 below

Sampling Period: January 2021

Obtained Date: 10 February 2021

Publication Date: 18 February 2021

Table 1 - No Pollutant Limits Apply

EPL ID	Pollutant	Units of Measure	Monitoring Frequency	No. of Measurements for the Month	Date Sampled	Date Obtained	Min Value	Mean Value	Median Value	Max or Only Value
3	Solid Particles	g/m <sup>2</sup> /month	Continuous	1	15/01/21	1/02/21	-	-	-	1.6
11	PM <sub>10</sub>	µg/m <sup>3</sup>	Every 6 days	5	Various	10/02/21	4.9	14.9	13.9	24.7
12	PM <sub>10</sub>	µg/m <sup>3</sup>	Every 6 days	5	Various	10/02/21	4.9	12.04	13.9	20.2
6	Conductivity	µs/cm	Each overflow event	0	-	-	-	-	-	-
	Oil and Grease	mg/L		0	-	-	-	-	-	-
	Total Organic Carbon	mg/L		0	-	-	-	-	-	-
	Total Suspended Solids	mg/L		0	-	-	-	-	-	-
	pH	pH		0	-	-	-	-	-	-
7	Conductivity	µs/cm	Quarterly	0	-	-	-	-	-	-
	Oil and Grease	mg/L					-	-	-	-
	Total Organic Carbon	mg/L					-	-	-	-
	Total Suspended Solids	mg/L					-	-	-	-
	pH	pH					-	-	-	-



## WHITEHAVEN CHPP – MONTHLY MONITORING SUMMARY

Table 2 – Groundwater Monitoring (Quarterly – No Limits apply)

EPL ID	Pollutant	Units of Measure	Monitoring Frequency	No. of Samples for the Period	Date Sampled	Date Obtained	Min Value	Mean Value	Median Value	Max or Only Value
8	Ammonia	mg/L	Quarterly	0	-	-	-	-	-	-
	Bicarbonate	mg/L					-	-	-	-
	Calcium	mg/L					-	-	-	-
	Chloride	mg/L					-	-	-	-
	Conductivity	µs/cm					-	-	-	-
	Lead	mg/L					-	-	-	-
	Magnesium	mg/L					-	-	-	-
	Nitrate	mg/L					-	-	-	-
	Potassium	mg/L					-	-	-	-
	Sodium	mg/L					-	-	-	-
	Standing Water Level	m					-	-	-	-
	Sulphate	mg/L					-	-	-	-
pH	pH	-	-	-	-					
9	Ammonia	mg/L	Quarterly	0	-	-	-	-	-	-
	Bicarbonate	mg/L					-	-	-	-
	Calcium	mg/L					-	-	-	-
	Chloride	mg/L					-	-	-	-
	Conductivity	µs/cm					-	-	-	-
	Lead	mg/L					-	-	-	-
	Magnesium	mg/L					-	-	-	-
	Nitrate	mg/L					-	-	-	-



### WHITEHAVEN CHPP – MONTHLY MONITORING SUMMARY

EPL ID	Pollutant	Units of Measure	Monitoring Frequency	No. of Samples for the Period	Date Sampled	Date Obtained	Min Value	Mean Value	Median Value	Max or Only Value
	Potassium	mg/L					-	-	-	-
	Sodium	mg/L					-	-	-	-
	Standing Water Level	m					-	-	-	-
	Sulphate	mg/L					-	-	-	-
	pH	pH					-	-	-	-
10	Ammonia	mg/L	Quarterly	0	-	-	-	-	-	-
	Bicarbonate	mg/L					-	-	-	-
	Calcium	mg/L					-	-	-	-
	Chloride	mg/L					-	-	-	-
	Conductivity	µs/cm					-	-	-	-
	Lead	mg/L					-	-	-	-
	Magnesium	mg/L					-	-	-	-
	Nitrate	mg/L					-	-	-	-
	Potassium	mg/L					-	-	-	-
	Sodium	mg/L					-	-	-	-
	Standing Water Level	m					-	-	-	-
	Sulphate	mg/L					-	-	-	-
	pH	pH					-	-	-	-



## WHITEHAVEN CHPP – MONTHLY MONITORING SUMMARY

Table 3 – Monitoring (Quarterly Noise – Limits Apply)

EPL ID	Date	Measurement Period	Measured levels – CHPP – dB(A)		Limit(s)- dB(A)	Wind speed (m/s)	Observations	(Potential) Non-compliance /breach
			L <sub>A1</sub> , 1 minute	L <sub>Aeq</sub> , 15 minute				
N1	-	15 mins day	-					
		15 mins evening	-					
		15 mins night	-					
		1 min night		-				

**Notes:**

**dB(A):** The overall level of a sound is usually expressed in terms of dBA, which is measured using a sound level meter with an “A-weighting” filter. This is an electronic filter having a frequency response corresponding approximately to that of human hearing.

**L<sub>Aeq</sub>, 15 minute:** The A-weighted equivalent noise level (basically the average noise level). It is defined as the steady sound level that contains the same amount of acoustical energy as the corresponding time-varying sound, in this instance over a period of 15 minutes.

**L<sub>A1</sub>, 1 minute:** The noise level exceeded for 1% of the 15 minute interval.

**I/A:** When site noise is noted as inaudible (I/A), no site noise was audible at the monitoring location.

**Not Measurable (NM):** indicates that some site noise was audible, but indeterminate due to one of the following reasons:

- site noise levels were insignificant and unlikely, in many cases, to be even noticed; or
- site noise levels were masked by another relatively loud noise source, but were estimated to be less than LAeq 30 dB, which is insignificant in terms of any applicable criterion.



# WHITEHAVEN COAL

## WHITEHAVEN CHPP – MONTHLY MONITORING SUMMARY

Figure 1 – EPL 3637 Monitoring Locations





## WHITEHAVEN CHPP – MONTHLY MONITORING SUMMARY

### Site Information

EPL No: 3637

EPA Website Link: <http://www.epa.nsw.gov.au/prpoeoapp/ViewPOEOLicence.aspx?DOCID=33514&SYSUID=1&LICID=3637>

Licensee: Whitehaven Coal Mining Limited

Licensee Address: Boggabri Road, Gunnedah NSW 2380

EPL Monitoring Points: See Figure 1 below

Sampling Period: February 2021

Obtained Date: 10 March 2021

Publication Date: 12 March 2021

**Table 1 - No Pollutant Limits Apply**

EPL ID	Pollutant	Units of Measure	Monitoring Frequency	No. of Measurements for the Month	Date Sampled	Date Obtained	Min Value	Mean Value	Median Value	Max or Only Value
3	Solid Particles	g/m <sup>2</sup> /month	Continuous	1	16/02/21	23/02/21	-	-	-	1.3
11	PM <sub>10</sub>	µg/m <sup>3</sup>	Every 6 days	5	Various	5/03/21	5.2	8.3	8.5	12.3
12	PM <sub>10</sub>	µg/m <sup>3</sup>	Every 6 days	5	Various	5/03/21	3.4	6.6	7.1	9.3
6	Conductivity	µs/cm	Each overflow event	0	-	-	-	-	-	-
	Oil and Grease	mg/L		0	-	-	-	-	-	-
	Total Organic Carbon	mg/L		0	-	-	-	-	-	-
	Total Suspended Solids	mg/L		0	-	-	-	-	-	-
	pH	pH		0	-	-	-	-	-	-
7	Conductivity	µs/cm	Quarterly	1	1/02/21	9/02/21	-	-	-	1300
	Oil and Grease	mg/L					-	-	-	<5
	Total Organic Carbon	mg/L					-	-	-	4
	Total Suspended Solids	mg/L					-	-	-	20
	pH	pH					-	-	-	8.05



## WHITEHAVEN CHPP – MONTHLY MONITORING SUMMARY

Table 2 – Groundwater Monitoring (Quarterly – No Limits apply)

EPL ID	Pollutant	Units of Measure	Monitoring Frequency	No. of Samples for the Period	Date Sampled	Date Obtained	Min Value	Mean Value	Median Value	Max or Only Value
8	Ammonia	mg/L	Quarterly	0	-	-	-	-	-	-
	Bicarbonate	mg/L					-	-	-	-
	Calcium	mg/L					-	-	-	-
	Chloride	mg/L					-	-	-	-
	Conductivity	µs/cm					-	-	-	-
	Lead	mg/L					-	-	-	-
	Magnesium	mg/L					-	-	-	-
	Nitrate	mg/L					-	-	-	-
	Potassium	mg/L					-	-	-	-
	Sodium	mg/L					-	-	-	-
	Standing Water Level	m					-	-	-	-
	Sulphate	mg/L					-	-	-	-
pH	pH	-	-	-	-					
9	Ammonia	mg/L	Quarterly	0	-	-	-	-	-	-
	Bicarbonate	mg/L					-	-	-	-
	Calcium	mg/L					-	-	-	-
	Chloride	mg/L					-	-	-	-
	Conductivity	µs/cm					-	-	-	-
	Lead	mg/L					-	-	-	-
	Magnesium	mg/L					-	-	-	-
	Nitrate	mg/L					-	-	-	-



### WHITEHAVEN CHPP – MONTHLY MONITORING SUMMARY

EPL ID	Pollutant	Units of Measure	Monitoring Frequency	No. of Samples for the Period	Date Sampled	Date Obtained	Min Value	Mean Value	Median Value	Max or Only Value
	Potassium	mg/L					-	-	-	-
	Sodium	mg/L					-	-	-	-
	Standing Water Level	m					-	-	-	-
	Sulphate	mg/L					-	-	-	-
	pH	pH					-	-	-	-
10	Ammonia	mg/L	Quarterly	0	-	-	-	-	-	-
	Bicarbonate	mg/L					-	-	-	-
	Calcium	mg/L					-	-	-	-
	Chloride	mg/L					-	-	-	-
	Conductivity	µs/cm					-	-	-	-
	Lead	mg/L					-	-	-	-
	Magnesium	mg/L					-	-	-	-
	Nitrate	mg/L					-	-	-	-
	Potassium	mg/L					-	-	-	-
	Sodium	mg/L					-	-	-	-
	Standing Water Level	m					-	-	-	-
	Sulphate	mg/L					-	-	-	-
	pH	pH					-	-	-	-





## WHITEHAVEN CHPP – MONTHLY MONITORING SUMMARY

Table 3 – Monitoring (Quarterly Noise – Limits Apply)

EPL ID	Date	Measurement Period	Measured levels – CHPP – dB(A)		Limit(s)- dB(A)	Wind speed (m/s)	Observations	(Potential) Non-compliance /breach
			L <sub>A1</sub> , 1 minute	L <sub>Aeq</sub> , 15 minute				
N1	23/02/21	15 mins day	-	N/M	35	0.9	Onsite engine revs faintly audible	No
		15 mins evening	-	N/M	35	6.0	Dozer operations barely audible	
		15 mins night	-	I/A	35	5.8	Inaudible	
	25/03/21	1 min night	N/M	-	45	1.8	General activity faintly audible	

Notes:

**dB(A):** The overall level of a sound is usually expressed in terms of dBA, which is measured using a sound level meter with an “A-weighting” filter. This is an electronic filter having a frequency response corresponding approximately to that of human hearing.

**L<sub>Aeq</sub>, 15 minute:** The A-weighted equivalent noise level (basically the average noise level). It is defined as the steady sound level that contains the same amount of acoustical energy as the corresponding time-varying sound, in this instance over a period of 15 minutes.

**L<sub>A1</sub>, 1 minute:** The noise level exceeded for 1% of the 15 minute interval.

**I/A:** When site noise is noted as inaudible (I/A), no site noise was audible at the monitoring location.

**Not Measurable (NM):** indicates that some site noise was audible, but indeterminate due to one of the following reasons:

- site noise levels were insignificant and unlikely, in many cases, to be even noticed; or
- site noise levels were masked by another relatively loud noise source, but were estimated to be less than L<sub>Aeq</sub> 30 dB, which is insignificant in terms of any applicable criterion.



# WHITEHAVEN COAL

## WHITEHAVEN CHPP – MONTHLY MONITORING SUMMARY

Figure 1 – EPL 3637 Monitoring Locations





## WHITEHAVEN CHPP – MONTHLY MONITORING SUMMARY

### Site Information

**EPL No:** 3637

**EPA Website Link:** <http://www.epa.nsw.gov.au/prpoeoapp/ViewPOEOLicence.aspx?DOCID=33514&SYSUID=1&LICID=3637>

**Licensee:** Whitehaven Coal Mining Limited

**Licensee Address:** Boggabri Road, Gunnedah NSW 2380

**EPL Monitoring Points:** See Figure 1 below

**Sampling Period:** March 2021

**Obtained Date:** 21 April 2021

**Publication Date:** 22 April 2021

**Table 1 - No Pollutant Limits Apply**

EPL ID	Pollutant	Units of Measure	Monitoring Frequency	No. of Measurements for the Month	Date Sampled	Date Obtained	Min Value	Mean Value	Median Value	Max or Only Value
3	Solid Particles	g/m <sup>2</sup> /month	Continuous	1	17/04/21	21/04/21	-	-	-	2.9
11	PM <sub>10</sub>	µg/m <sup>3</sup>	Every 6 days	5	Various	21/04/21	1.8	8.44	9.1	15.2
12	PM <sub>10</sub>	µg/m <sup>3</sup>	Every 6 days	5	Various	21/04/21	1.9	7.46	6.7	14.5
6	Conductivity	µs/cm	Each overflow event	0	-	-	-	-	-	-
	Oil and Grease	mg/L		0	-	-	-	-	-	-
	Total Organic Carbon	mg/L		0	-	-	-	-	-	-
	Total Suspended Solids	mg/L		0	-	-	-	-	-	-
	pH	pH		0	-	-	-	-	-	-
7	Conductivity	µs/cm	Quarterly	0	-	-	-	-	-	-
	Oil and Grease	mg/L					-	-	-	-
	Total Organic Carbon	mg/L					-	-	-	-
	Total Suspended Solids	mg/L					-	-	-	-
	pH	pH					-	-	-	-



## WHITEHAVEN CHPP – MONTHLY MONITORING SUMMARY

Table 2 – Groundwater Monitoring (Quarterly – No Limits apply)

EPL ID	Pollutant	Units of Measure	Monitoring Frequency	No. of Samples for the Period	Date Sampled	Date Obtained	Min Value	Mean Value	Median Value	Max or Only Value
8	Ammonia	mg/L	Quarterly	1	17/03/21	25/03/21	-	-	-	0.5
	Bicarbonate	mg/L					-	-	-	1400
	Calcium	mg/L					-	-	-	32
	Chloride	mg/L					-	-	-	2180
	Conductivity	µs/cm					-	-	-	10100
	Lead	mg/L					-	-	-	0.002
	Magnesium	mg/L					-	-	-	179
	Nitrate	mg/L					-	-	-	0.96
	Potassium	mg/L					-	-	-	26
	Sodium	mg/L					-	-	-	2060
	Standing Water Level	m					-	-	-	7.6
	Sulphate	mg/L					-	-	-	1520
pH	pH	-	-	-	7.7					
9	Ammonia	mg/L	Quarterly	1	17/03/21	25/03/21	-	-	-	0.7
	Bicarbonate	mg/L					-	-	-	709
	Calcium	mg/L					-	-	-	164
	Chloride	mg/L					-	-	-	1040
	Conductivity	µs/cm					-	-	-	5700
	Lead	mg/L					-	-	-	<0.001
	Magnesium	mg/L					-	-	-	213
	Nitrate	mg/L					-	-	-	0.36



### WHITEHAVEN CHPP – MONTHLY MONITORING SUMMARY

EPL ID	Pollutant	Units of Measure	Monitoring Frequency	No. of Samples for the Period	Date Sampled	Date Obtained	Min Value	Mean Value	Median Value	Max or Only Value
	Potassium	mg/L					-	-	-	126
	Sodium	mg/L					-	-	-	681
	Standing Water Level	m					-	-	-	1.0
	Sulphate	mg/L					-	-	-	1520
	pH	pH					-	-	-	7.6
10	Ammonia	mg/L	Quarterly	1	17/03/21	25/03/21	-	-	-	8.1
	Bicarbonate	mg/L					-	-	-	812
	Calcium	mg/L					-	-	-	182
	Chloride	mg/L					-	-	-	1460
	Conductivity	µs/cm					-	-	-	5950
	Lead	mg/L					-	-	-	<0.001
	Magnesium	mg/L					-	-	-	212
	Nitrate	mg/L					-	-	-	<0.01
	Potassium	mg/L					-	-	-	68
	Sodium	mg/L					-	-	-	714
	Standing Water Level	m					-	-	-	1.2
	Sulphate	mg/L					-	-	-	231
	pH	pH					-	-	-	7.4



## WHITEHAVEN CHPP – MONTHLY MONITORING SUMMARY

Table 3 – Monitoring (Quarterly Noise – Limits Apply)

EPL ID	Date	Measurement Period	Measured levels – CHPP – dB(A)		Limit(s)- dB(A)	Wind speed (m/s)	Observations	(Potential) Non-compliance /breach
			LA1, 1 minute	LAeq, 15 minute				
N1	-	15 mins day	-				-	-
		15 mins evening	-					
		15 mins night	-					
		1 min night		-				

**Notes:**

**dB(A):** The overall level of a sound is usually expressed in terms of dBA, which is measured using a sound level meter with an “A-weighting” filter. This is an electronic filter having a frequency response

corresponding approximately to that of human hearing.

**LAeq, 15 minute:** The A-weighted equivalent noise level (basically the average noise level). It is defined as the steady sound level that contains the same amount of acoustical energy as the corresponding time-varying sound, in this instance over a period of 15 minutes.

**LA1, 1 minute:** The noise level exceeded for 1% of the 15 minute interval.

**I/A:** When site noise is noted as inaudible (I/A), no site noise was audible at the monitoring location.

**Not Measurable (NM):** indicates that some site noise was audible, but indeterminate due to one of the following reasons:

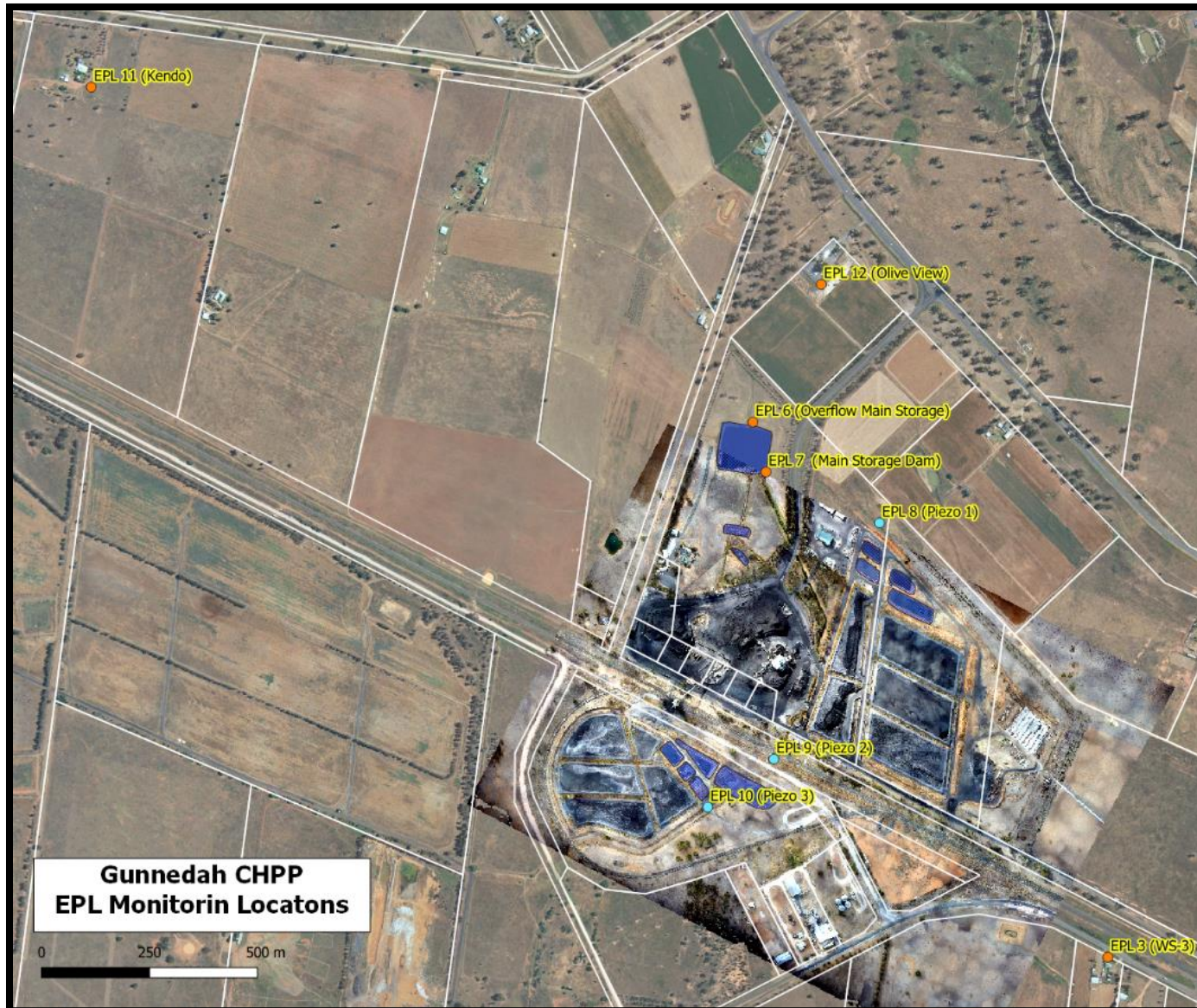
- site noise levels were insignificant and unlikely, in many cases, to be even noticed; or
- site noise levels were masked by another relatively loud noise source, but were estimated to be less than LAeq 30 dB, which is insignificant in terms of any applicable criterion.



# WHITEHAVEN COAL

## WHITEHAVEN CHPP – MONTHLY MONITORING SUMMARY

Figure 1 – EPL 3637 Monitoring Locations





## WHITEHAVEN CHPP – MONTHLY MONITORING SUMMARY

### Site Information

**EPL No:** 3637

**EPA Website Link:** <http://www.epa.nsw.gov.au/prpoeoapp/ViewPOEOLicence.aspx?DOCID=33514&SYSUID=1&LICID=3637>

**Licensee:** Whitehaven Coal Mining Limited

**Licensee Address:** Boggabri Road, Gunnedah NSW 2380

**EPL Monitoring Points:** See Figure 1 below

**Sampling Period:** April 2021

**Obtained Date:** 25 May 2021

**Publication Date:** 27 May 2021

**Table 1 - No Pollutant Limits Apply**

EPL ID	Pollutant	Units of Measure	Monitoring Frequency	No. of Measurements for the Month	Date Sampled	Date Obtained	Min Value	Mean Value	Median Value	Max or Only Value
3	Solid Particles	g/m <sup>2</sup> /month	Continuous	1	15/04/21	27/04/21	-	-	-	2.8
11	PM <sub>10</sub>	µg/m <sup>3</sup>	Every 6 days	5	Various	25/05/21	18.5	29.8	25.8	45.9
12	PM <sub>10</sub>	µg/m <sup>3</sup>	Every 6 days	5	Various	25/05/21	6.0	12.9	12.3	18.3
6	Conductivity	µs/cm	Each overflow event	0	-	-	-	-	-	-
	Oil and Grease	mg/L		0	-	-	-	-	-	-
	Total Organic Carbon	mg/L		0	-	-	-	-	-	-
	Total Suspended Solids	mg/L		0	-	-	-	-	-	-
	pH	pH		0	-	-	-	-	-	-
7	Conductivity	µs/cm	Quarterly	0			-	-	-	-
	Oil and Grease	mg/L					-	-	-	-
	Total Organic Carbon	mg/L					-	-	-	-
	Total Suspended Solids	mg/L					-	-	-	-
	pH	pH					-	-	-	-





## WHITEHAVEN CHPP – MONTHLY MONITORING SUMMARY

Table 2 – Groundwater Monitoring (Quarterly – No Limits apply)

EPL ID	Pollutant	Units of Measure	Monitoring Frequency	No. of Samples for the Period	Date Sampled	Date Obtained	Min Value	Mean Value	Median Value	Max or Only Value
8	Ammonia	mg/L	Quarterly	0	-	-	-	-	-	-
	Bicarbonate	mg/L					-	-	-	-
	Calcium	mg/L					-	-	-	-
	Chloride	mg/L					-	-	-	-
	Conductivity	µs/cm					-	-	-	-
	Lead	mg/L					-	-	-	-
	Magnesium	mg/L					-	-	-	-
	Nitrate	mg/L					-	-	-	-
	Potassium	mg/L					-	-	-	-
	Sodium	mg/L					-	-	-	-
	Standing Water Level	m					-	-	-	-
	Sulphate	mg/L					-	-	-	-
pH	pH	-	-	-	-					
9	Ammonia	mg/L	Quarterly	0	-	-	-	-	-	-
	Bicarbonate	mg/L					-	-	-	-
	Calcium	mg/L					-	-	-	-
	Chloride	mg/L					-	-	-	-
	Conductivity	µs/cm					-	-	-	-
	Lead	mg/L					-	-	-	-
	Magnesium	mg/L					-	-	-	-
	Nitrate	mg/L					-	-	-	-



### WHITEHAVEN CHPP – MONTHLY MONITORING SUMMARY

EPL ID	Pollutant	Units of Measure	Monitoring Frequency	No. of Samples for the Period	Date Sampled	Date Obtained	Min Value	Mean Value	Median Value	Max or Only Value
	Potassium	mg/L					-	-	-	-
	Sodium	mg/L					-	-	-	-
	Standing Water Level	m					-	-	-	-
	Sulphate	mg/L					-	-	-	-
	pH	pH					-	-	-	-
10	Ammonia	mg/L	Quarterly	0	-	-	-	-	-	-
	Bicarbonate	mg/L					-	-	-	-
	Calcium	mg/L					-	-	-	-
	Chloride	mg/L					-	-	-	-
	Conductivity	µs/cm					-	-	-	-
	Lead	mg/L					-	-	-	-
	Magnesium	mg/L					-	-	-	-
	Nitrate	mg/L					-	-	-	-
	Potassium	mg/L					-	-	-	-
	Sodium	mg/L					-	-	-	-
	Standing Water Level	m					-	-	-	-
	Sulphate	mg/L					-	-	-	-
	pH	pH					-	-	-	-



## WHITEHAVEN CHPP – MONTHLY MONITORING SUMMARY

Table 3 – Monitoring (Quarterly Noise – Limits Apply)

EPL ID	Date	Measurement Period	Measured levels – CHPP – dB(A)		Limit(s)- dB(A)	Wind speed (m/s)	Observations	(Potential) Non-compliance /breach
			LA1, 1 minute	LAeq, 15 minute				
N1	-	15 mins day	-				-	-
		15 mins evening	-					
		15 mins night	-					
		1 min night		-				

**Notes:**

**dB(A):** The overall level of a sound is usually expressed in terms of dBA, which is measured using a sound level meter with an “A-weighting” filter. This is an electronic filter having a frequency response corresponding approximately to that of human hearing.

**LAeq, 15 minute:** The A-weighted equivalent noise level (basically the average noise level). It is defined as the steady sound level that contains the same amount of acoustical energy as the corresponding time-varying sound, in this instance over a period of 15 minutes.

**LA1, 1 minute:** The noise level exceeded for 1% of the 15 minute interval.

**I/A:** When site noise is noted as inaudible (I/A), no site noise was audible at the monitoring location.

**Not Measurable (NM):** indicates that some site noise was audible, but indeterminate due to one of the following reasons:

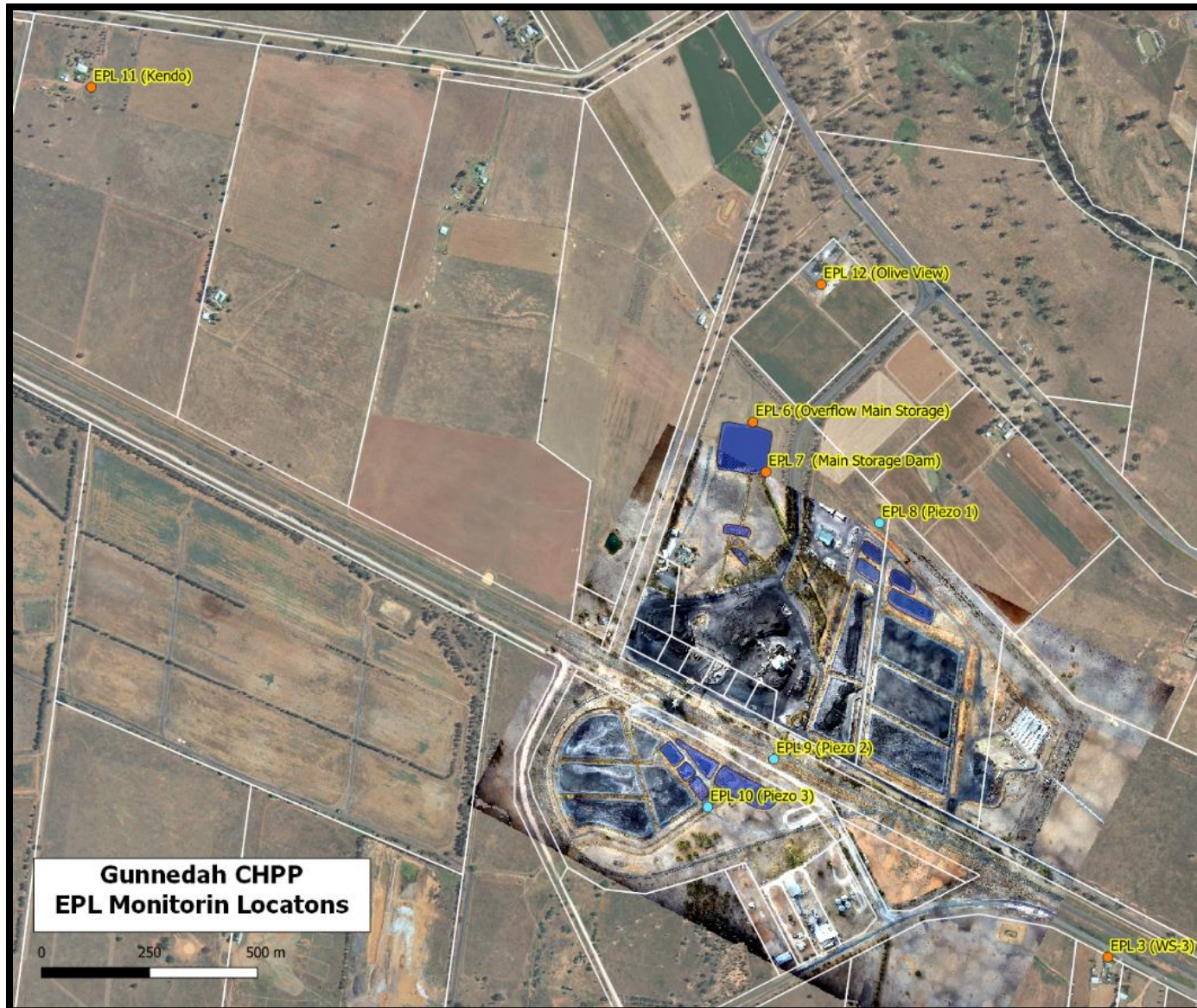
- site noise levels were insignificant and unlikely, in many cases, to be even noticed; or
- site noise levels were masked by another relatively loud noise source, but were estimated to be less than LAeq 30 dB, which is insignificant in terms of any applicable criterion.



# WHITEHAVEN COAL

## WHITEHAVEN CHPP – MONTHLY MONITORING SUMMARY

Figure 1 – EPL 3637 Monitoring Locations





## WHITEHAVEN CHPP – MONTHLY MONITORING SUMMARY

### Site Information

**EPL No:** 3637

**EPA Website Link:** <http://www.epa.nsw.gov.au/prpoeoapp/ViewPOEOLicence.aspx?DOCID=33514&SYSUID=1&LICID=3637>

**Licensee:** Whitehaven Coal Mining Limited

**Licensee Address:** Boggabri Road, Gunnedah NSW 2380

**EPL Monitoring Points:** See Figure 1 below

**Sampling Period:** May 2021

**Obtained Date:** 24 June 2021

**Publication Date:** 25 June 2021

**Table 1 - No Pollutant Limits Apply**

EPL ID	Pollutant	Units of Measure	Monitoring Frequency	No. of Measurements for the Month	Date Sampled	Date Obtained	Min Value	Mean Value	Median Value	Max or Only Value
3	Solid Particles	g/m <sup>2</sup> /month	Continuous	1	17/05/21	01/06/21	-	-	-	1.7
11	PM <sub>10</sub>	µg/m <sup>3</sup>	Every 6 days	5	Various	24/06/21	3.7	13.7	9.6	38.7
12	PM <sub>10</sub>	µg/m <sup>3</sup>	Every 6 days	5	Various	24/06/21	2.8	6.2	6.0	9.8
6	Conductivity	µs/cm	Each overflow event	0	-	-	-	-	-	-
	Oil and Grease	mg/L		0	-	-	-	-	-	-
	Total Organic Carbon	mg/L		0	-	-	-	-	-	-
	Total Suspended Solids	mg/L		0	-	-	-	-	-	-
	pH	pH		0	-	-	-	-	-	-
7	Conductivity	µs/cm	Quarterly	1	3/05/21	11/05/21	-	-	-	1770
	Oil and Grease	mg/L					-	-	-	<5
	Total Organic Carbon	mg/L					-	-	-	<1
	Total Suspended Solids	mg/L					-	-	-	23
	pH	pH					-	-	-	7.70



## WHITEHAVEN CHPP – MONTHLY MONITORING SUMMARY

Table 2 – Groundwater Monitoring (Quarterly – No Limits apply)

EPL ID	Pollutant	Units of Measure	Monitoring Frequency	No. of Samples for the Period	Date Sampled	Date Obtained	Min Value	Mean Value	Median Value	Max or Only Value
8	Ammonia	mg/L	Quarterly	0	-	-	-	-	-	-
	Bicarbonate	mg/L					-	-	-	-
	Calcium	mg/L					-	-	-	-
	Chloride	mg/L					-	-	-	-
	Conductivity	µs/cm					-	-	-	-
	Lead	mg/L					-	-	-	-
	Magnesium	mg/L					-	-	-	-
	Nitrate	mg/L					-	-	-	-
	Potassium	mg/L					-	-	-	-
	Sodium	mg/L					-	-	-	-
	Standing Water Level	m					-	-	-	-
	Sulphate	mg/L					-	-	-	-
pH	pH	-	-	-	-					
9	Ammonia	mg/L	Quarterly	0	-	-	-	-	-	-
	Bicarbonate	mg/L					-	-	-	-
	Calcium	mg/L					-	-	-	-
	Chloride	mg/L					-	-	-	-
	Conductivity	µs/cm					-	-	-	-
	Lead	mg/L					-	-	-	-
	Magnesium	mg/L					-	-	-	-
	Nitrate	mg/L					-	-	-	-



### WHITEHAVEN CHPP – MONTHLY MONITORING SUMMARY

EPL ID	Pollutant	Units of Measure	Monitoring Frequency	No. of Samples for the Period	Date Sampled	Date Obtained	Min Value	Mean Value	Median Value	Max or Only Value
	Potassium	mg/L					-	-	-	-
	Sodium	mg/L					-	-	-	-
	Standing Water Level	M					-	-	-	-
	Sulphate	mg/L					-	-	-	-
	pH	pH					-	-	-	-
10	Ammonia	mg/L	Quarterly	1			-	-	-	-
	Bicarbonate	mg/L					-	-	-	-
	Calcium	mg/L					-	-	-	-
	Chloride	mg/L					-	-	-	-
	Conductivity	µs/cm					-	-	-	-
	Lead	mg/L					-	-	-	-
	Magnesium	mg/L					-	-	-	-
	Nitrate	mg/L					-	-	-	-
	Potassium	mg/L					-	-	-	-
	Sodium	mg/L					-	-	-	-
	Standing Water Level	m					-	-	-	-
	Sulphate	mg/L					-	-	-	-
	pH	pH					-	-	-	-



## WHITEHAVEN CHPP – MONTHLY MONITORING SUMMARY

Table 3 – Monitoring (Quarterly Noise – Limits Apply)

EPL ID	Date	Measurement Period	Measured levels – CHPP – dB(A)		Limit(s)- dB(A)	Wind speed (m/s)	Observations	(Potential) Non-compliance /breach
			LA1, 1 minute	LAeq, 15 minute				
N1	-	15 mins day	-				-	-
		15 mins evening	-					
		15 mins night	-					
		1 min night		-				

**Notes:**

**dB(A):** The overall level of a sound is usually expressed in terms of dBA, which is measured using a sound level meter with an “A-weighting” filter. This is an electronic filter having a frequency response corresponding approximately to that of human hearing.

**LAeq, 15 minute:** The A-weighted equivalent noise level (basically the average noise level). It is defined as the steady sound level that contains the same amount of acoustical energy as the corresponding time-varying sound, in this instance over a period of 15 minutes.

**LA1, 1 minute:** The noise level exceeded for 1% of the 15 minute interval.

**I/A:** When site noise is noted as inaudible (I/A), no site noise was audible at the monitoring location.

**Not Measurable (NM):** indicates that some site noise was audible, but indeterminate due to one of the following reasons:

- site noise levels were insignificant and unlikely, in many cases, to be even noticed; or
- site noise levels were masked by another relatively loud noise source, but were estimated to be less than LAeq 30 dB, which is insignificant in terms of any applicable criterion.

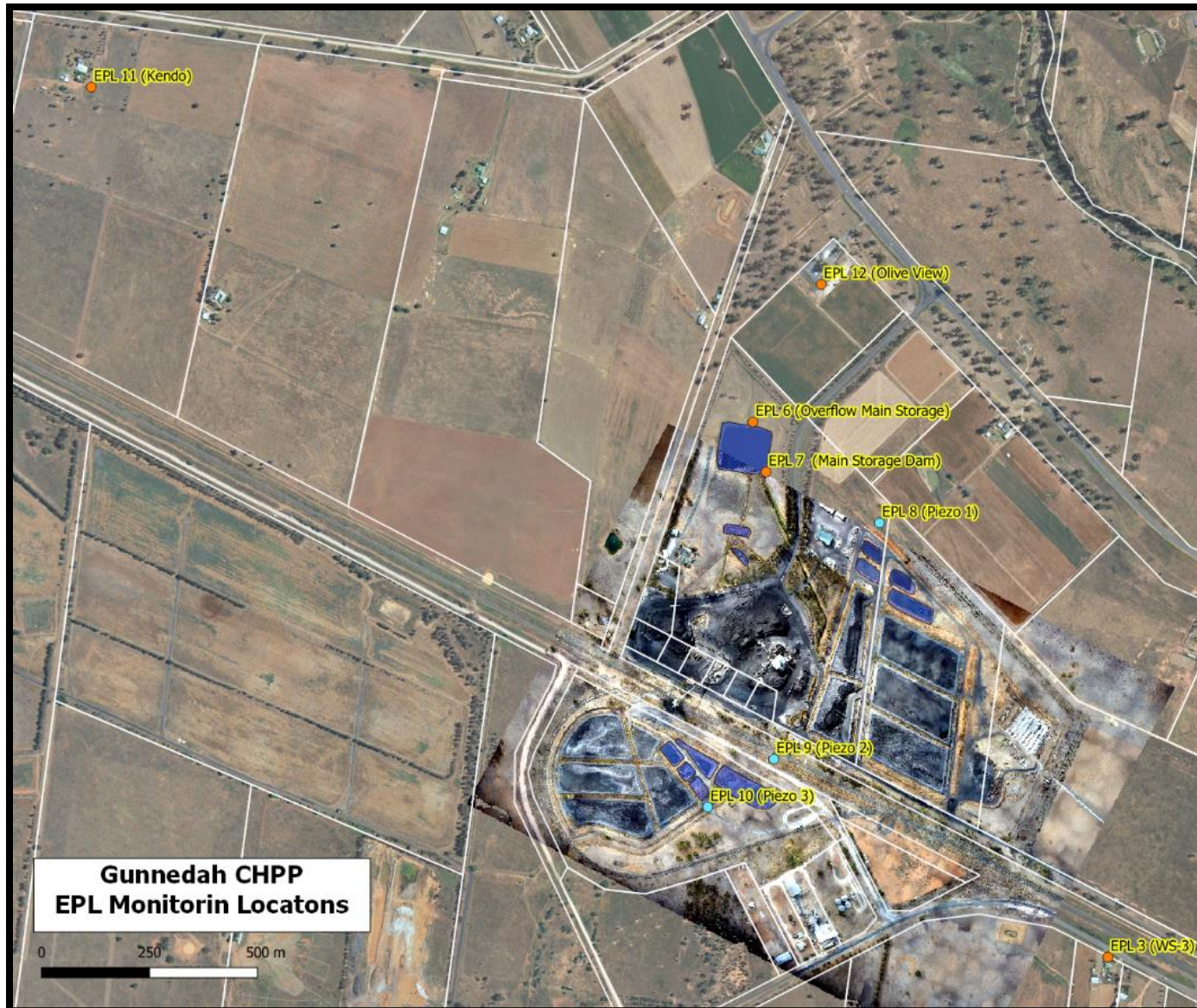




# WHITEHAVEN COAL

## WHITEHAVEN CHPP – MONTHLY MONITORING SUMMARY

Figure 1 – EPL 3637 Monitoring Locations





## WHITEHAVEN CHPP – MONTHLY MONITORING SUMMARY

### Site Information

**EPL No:** 3637

**EPA Website Link:** <http://www.epa.nsw.gov.au/prpoeoapp/ViewPOEOLicence.aspx?DOCID=33514&SYSUID=1&LICID=3637>

**Licensee:** Whitehaven Coal Mining Limited

**Licensee Address:** Boggabri Road, Gunnedah NSW 2380

**EPL Monitoring Points:** See Figure 1 below

**Sampling Period:** June 2021

**Obtained Date:** 23 July 2021 (noise monitoring data received)

**Publication Date:** 28 July 2021

**Table 1 - No Pollutant Limits Apply**

EPL ID	Pollutant	Units of Measure	Monitoring Frequency	No. of Measurements for the Month	Date Sampled	Date Obtained	Min Value	Mean Value	Median Value	Max or Only Value
3	Solid Particles	g/m <sup>2</sup> /month	Continuous	1	16/06/21	6/07/21	-	-	-	0.1
11	PM <sub>10</sub>	µg/m <sup>3</sup>	Every 6 days	5	Various	8/07/21	0.6	11.4	2.4	44
12	PM <sub>10</sub>	µg/m <sup>3</sup>	Every 6 days	5	Various	8/07/21	1.1	6.2	2.5	19.1
6	Conductivity	µs/cm	Each overflow event	0	-	-	-	-	-	-
	Oil and Grease	mg/L		0	-	-	-	-	-	-
	Total Organic Carbon	mg/L		0	-	-	-	-	-	-
	Total Suspended Solids	mg/L		0	-	-	-	-	-	-
	pH	pH		0	-	-	-	-	-	-
7	Conductivity	µs/cm	Quarterly	0	-	-	-	-	-	-
	Oil and Grease	mg/L					-	-	-	-
	Total Organic Carbon	mg/L					-	-	-	-
	Total Suspended Solids	mg/L					-	-	-	-
	pH	pH					-	-	-	-



## WHITEHAVEN CHPP – MONTHLY MONITORING SUMMARY

Table 2 – Groundwater Monitoring (Quarterly – No Limits apply)

EPL ID	Pollutant	Units of Measure	Monitoring Frequency	No. of Samples for the Period	Date Sampled	Date Obtained	Min Value	Mean Value	Median Value	Max or Only Value
8	Ammonia	mg/L	Quarterly	1	7/06/21	16/06/21	-	-	-	1.38
	Bicarbonate	mg/L					-	-	-	1340
	Calcium	mg/L					-	-	-	61
	Chloride	mg/L					-	-	-	2250
	Conductivity	µs/cm					-	-	-	9520
	Lead	mg/L					-	-	-	0.003
	Magnesium	mg/L					-	-	-	199
	Nitrate	mg/L					-	-	-	0.73
	Potassium	mg/L					-	-	-	28
	Sodium	mg/L					-	-	-	2160
	Standing Water Level	m					-	-	-	8.48
	Sulphate	mg/L					-	-	-	1360
pH	pH	-	-	-	7.7					
9	Ammonia	mg/L	Quarterly	1	7/06/21	16/06/21	-	-	-	0.06
	Bicarbonate	mg/L					-	-	-	705
	Calcium	mg/L					-	-	-	185
	Chloride	mg/L					-	-	-	1170
	Conductivity	µs/cm					-	-	-	5640
	Lead	mg/L					-	-	-	0.001
	Magnesium	mg/L					-	-	-	240
	Nitrate	mg/L					-	-	-	2.62



### WHITEHAVEN CHPP – MONTHLY MONITORING SUMMARY

EPL ID	Pollutant	Units of Measure	Monitoring Frequency	No. of Samples for the Period	Date Sampled	Date Obtained	Min Value	Mean Value	Median Value	Max or Only Value
	Potassium	mg/L					-	-	-	131
	Sodium	mg/L					-	-	-	717
	Standing Water Level	M					-	-	-	1.80
	Sulphate	mg/L					-	-	-	721
	pH	pH					-	-	-	7.6
10	Ammonia	mg/L	Quarterly	1	7/06/21	16/06/21	-	-	-	5.86
	Bicarbonate	mg/L					-	-	-	816
	Calcium	mg/L					-	-	-	200
	Chloride	mg/L					-	-	-	1420
	Conductivity	µs/cm					-	-	-	5610
	Lead	mg/L					-	-	-	0.002
	Magnesium	mg/L					-	-	-	224
	Nitrate	mg/L					-	-	-	<0.01
	Potassium	mg/L					-	-	-	68
	Sodium	mg/L					-	-	-	721
	Standing Water Level	m					-	-	-	1.61
	Sulphate	mg/L					-	-	-	246
	pH	pH					-	-	-	7.5

## WHITEHAVEN CHPP – MONTHLY MONITORING SUMMARY

Table 3 – Monitoring (Quarterly Noise – Limits Apply)

EPL ID	Date	Measurement Period	Measured levels – CHPP – dB(A)		Limit(s)- dB(A)	Wind speed (m/s)	Observations	(Potential) Non-compliance /breach
			LA1, 1 minute	L <sub>Aeq</sub> , 15 minute				
N1	26/06/21	15 mins day	-	I/A	35	1.8 m/s ESE	-	No
		15 mins evening	-	NM	35	0.6 m/s ENE		
		15 mins night	-	32	35	1.6 m/s E		
		1 min night	38	-	45	1.6 m/s E		

**Notes:**

**dB(A):** The overall level of a sound is usually expressed in terms of dBA, which is measured using a sound level meter with an “A-weighting” filter. This is an electronic filter having a frequency response corresponding approximately to that of human hearing.

**L<sub>Aeq</sub>, 15 minute:** The A-weighted equivalent noise level (basically the average noise level). It is defined as the steady sound level that contains the same amount of acoustical energy as the corresponding time-varying sound, in this instance over a period of 15 minutes.

**LA1, 1 minute:** The noise level exceeded for 1% of the 15 minute interval.

**I/A:** When site noise is noted as inaudible (I/A), no site noise was audible at the monitoring location.

**Not Measurable (NM):** indicates that some site noise was audible, but indeterminate due to one of the following reasons:

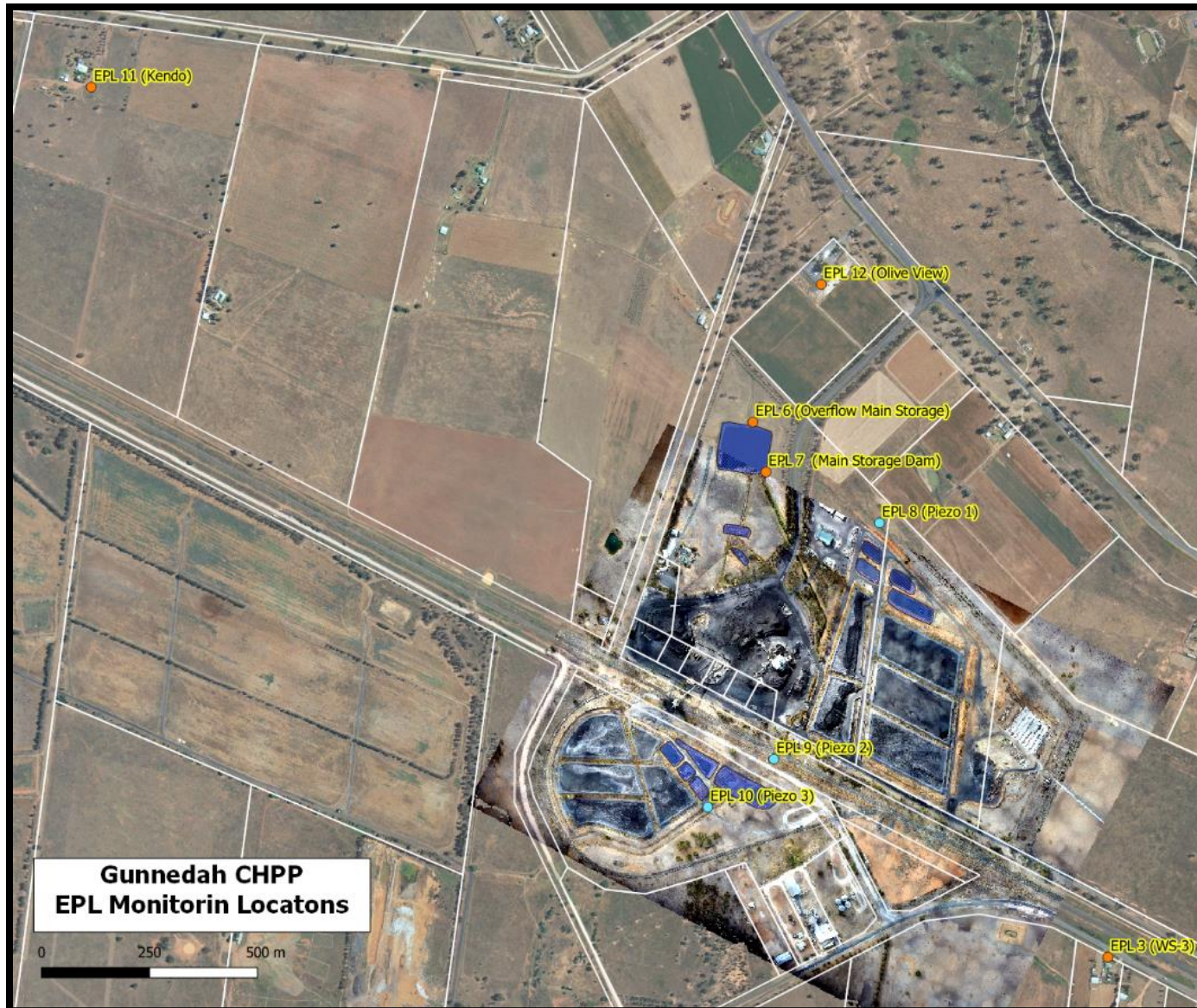
- site noise levels were insignificant and unlikely, in many cases, to be even noticed; or
- site noise levels were masked by another relatively loud noise source, but were estimated to be less than LAeq 30 dB, which is insignificant in terms of any applicable criterion.



# WHITEHAVEN COAL

## WHITEHAVEN CHPP – MONTHLY MONITORING SUMMARY

Figure 1 – EPL 3637 Monitoring Locations





## WHITEHAVEN CHPP – MONTHLY MONITORING SUMMARY

### Site Information

EPL No: 3637

EPA Website Link: <http://www.epa.nsw.gov.au/prpoeoapp/ViewPOEOLicence.aspx?DOCID=33514&SYSUID=1&LICID=3637>

Licensee: Whitehaven Coal Mining Limited

Licensee Address: Boggabri Road, Gunnedah NSW 2380

EPL Monitoring Points: See Figure 1 below

Sampling Period: July 2021

Obtained Date: 23 August

Publication Date: 23 August 2021

**Table 1 - No Pollutant Limits Apply**

EPL ID	Pollutant	Units of Measure	Monitoring Frequency	No. of Measurements for the Month	Date Sampled	Date Obtained	Min Value	Mean Value	Median Value	Max or Only Value
3	Solid Particles	g/m <sup>2</sup> /month	Continuous	1	16/07/21	1/08/21	-	-	-	0.5
11	PM <sub>10</sub>	µg/m <sup>3</sup>	Every 6 days	5	Various	23/08/21	0.6	6.02	6.0	14.5
12	PM <sub>10</sub>	µg/m <sup>3</sup>	Every 6 days	5	Various	23/08/221	1.9	5.6	6.5	7.7
6	Conductivity	µs/cm	Each overflow event	0	-	-	-	-	-	-
	Oil and Grease	mg/L		0	-	-	-	-	-	-
	Total Organic Carbon	mg/L		0	-	-	-	-	-	-
	Total Suspended Solids	mg/L		0	-	-	-	-	-	-
	pH	pH		0	-	-	-	-	-	-
7	Conductivity	µs/cm	Quarterly	0	-	-	-	-	-	-
	Oil and Grease	mg/L					-	-	-	-
	Total Organic Carbon	mg/L					-	-	-	-
	Total Suspended Solids	mg/L					-	-	-	-
	pH	pH					-	-	-	-



## WHITEHAVEN CHPP – MONTHLY MONITORING SUMMARY

Table 2 – Groundwater Monitoring (Quarterly – No Limits apply)

EPL ID	Pollutant	Units of Measure	Monitoring Frequency	No. of Samples for the Period	Date Sampled	Date Obtained	Min Value	Mean Value	Median Value	Max or Only Value
8	Ammonia	mg/L	Quarterly	0	-	-	-	-	-	-
	Bicarbonate	mg/L					-	-	-	-
	Calcium	mg/L					-	-	-	-
	Chloride	mg/L					-	-	-	-
	Conductivity	µs/cm					-	-	-	-
	Lead	mg/L					-	-	-	-
	Magnesium	mg/L					-	-	-	-
	Nitrate	mg/L					-	-	-	-
	Potassium	mg/L					-	-	-	-
	Sodium	mg/L					-	-	-	-
	Standing Water Level	m					-	-	-	-
	Sulphate	mg/L					-	-	-	-
pH	pH	-	-	-	-					
9	Ammonia	mg/L	Quarterly	0	-	-	-	-	-	-
	Bicarbonate	mg/L					-	-	-	-
	Calcium	mg/L					-	-	-	-
	Chloride	mg/L					-	-	-	-
	Conductivity	µs/cm					-	-	-	-
	Lead	mg/L					-	-	-	-
	Magnesium	mg/L					-	-	-	-
	Nitrate	mg/L					-	-	-	-





# WHITEHAVEN COAL

## WHITEHAVEN CHPP – MONTHLY MONITORING SUMMARY

EPL ID	Pollutant	Units of Measure	Monitoring Frequency	No. of Samples for the Period	Date Sampled	Date Obtained	Min Value	Mean Value	Median Value	Max or Only Value
	Potassium	mg/L					--	-	-	-
	Sodium	mg/L					-	-	-	-
	Standing Water Level	M					-	-	-	-
	Sulphate	mg/L					-	-	-	-
	pH	pH					-	-	-	-
10	Ammonia	mg/L	Quarterly	0	-	-	-	-	-	-
	Bicarbonate	mg/L					-	-	-	-
	Calcium	mg/L					-	-	-	-
	Chloride	mg/L					-	-	-	-
	Conductivity	µs/cm					-	-	-	-
	Lead	mg/L					-	-	-	-
	Magnesium	mg/L					-	-	-	-
	Nitrate	mg/L					-	-	-	-
	Potassium	mg/L					-	-	-	-
	Sodium	mg/L					-	-	-	-
	Standing Water Level	m					-	-	-	-
	Sulphate	mg/L					-	-	-	-
	pH	pH					-	-	-	-



## WHITEHAVEN CHPP – MONTHLY MONITORING SUMMARY

Table 3 – Monitoring (Quarterly Noise – Limits Apply)

EPL ID	Date	Measurement Period	Measured levels – CHPP – dB(A)		Limit(s)- dB(A)	Wind speed (m/s)	Observations	(Potential) Non-compliance /breach
			LA1, 1 minute	LAeq, 15 minute				
N1	-	15 mins day	-		35		-	-
		15 mins evening	-		35			
		15 mins night	-		35			
		1 min night		-	45			

**Notes:**

**dB(A):** The overall level of a sound is usually expressed in terms of dBA, which is measured using a sound level meter with an “A-weighting” filter. This is an electronic filter having a frequency response corresponding approximately to that of human hearing.

**LAeq, 15 minute:** The A-weighted equivalent noise level (basically the average noise level). It is defined as the steady sound level that contains the same amount of acoustical energy as the corresponding time-varying sound, in this instance over a period of 15 minutes.

**LA1, 1 minute:** The noise level exceeded for 1% of the 15 minute interval.

**I/A:** When site noise is noted as inaudible (I/A), no site noise was audible at the monitoring location.

**Not Measurable (NM):** indicates that some site noise was audible, but indeterminate due to one of the following reasons:

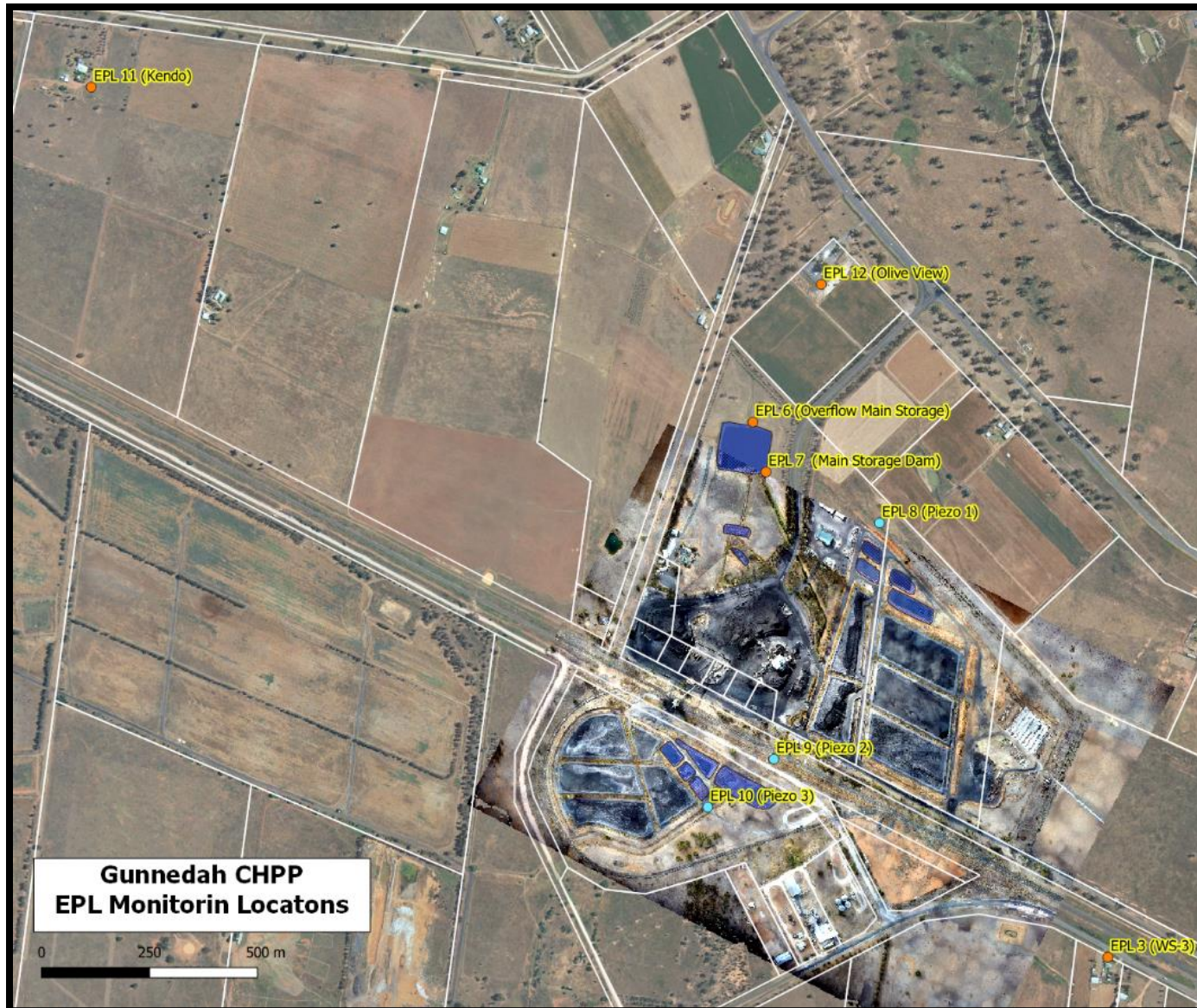
- site noise levels were insignificant and unlikely, in many cases, to be even noticed; or
- site noise levels were masked by another relatively loud noise source, but were estimated to be less than LAeq 30 dB, which is insignificant in terms of any applicable criterion.



# WHITEHAVEN COAL

## WHITEHAVEN CHPP – MONTHLY MONITORING SUMMARY

Figure 1 – EPL 3637 Monitoring Locations





## WHITEHAVEN CHPP – MONTHLY MONITORING SUMMARY

### Site Information

**EPL No:** 3637

**EPA Website Link:** <http://www.epa.nsw.gov.au/prpoeoapp/ViewPOEOLicence.aspx?DOCID=33514&SYSUID=1&LICID=3637>

**Licensee:** Whitehaven Coal Mining Limited

**Licensee Address:** Boggabri Road, Gunnedah NSW 2380

**EPL Monitoring Points:** See Figure 1 below

**Sampling Period:** August 2021

**Obtained Date:** 22 September 2021

**Publication Date:** 22 September 2021

**Table 1 - No Pollutant Limits Apply**

EPL ID	Pollutant	Units of Measure	Monitoring Frequency	No. of Measurements for the Month	Date Sampled	Date Obtained	Min Value	Mean Value	Median Value	Max or Only Value
3	Solid Particles	g/m <sup>2</sup> /month	Continuous	1	17/08/21	17/08/21	-	-	-	0.12
11	PM <sub>10</sub>	µg/m <sup>3</sup>	Every 6 days	6	Various	22/09/21	2.9	7.3	19.3	30.4
12	PM <sub>10</sub>	µg/m <sup>3</sup>	Every 6 days	6	Various	22/09/21	3.3	18.3	8.05	11.1
6	Conductivity	µs/cm	Each overflow event	0	-	-	-	-	-	-
	Oil and Grease	mg/L		0	-	-	-	-	-	-
	Total Organic Carbon	mg/L		0	-	-	-	-	-	-
	Total Suspended Solids	mg/L		0	-	-	-	-	-	-
	pH	pH		0	-	-	-	-	-	-
7	Conductivity	µs/cm	Quarterly	1	11/08/21	11/08/21	-	-	-	1460
	Oil and Grease	mg/L					-	-	-	<5
	Total Organic Carbon	mg/L					-	-	-	3
	Total Suspended Solids	mg/L					-	-	-	14
	pH	pH					-	-	-	8.4



## WHITEHAVEN CHPP – MONTHLY MONITORING SUMMARY

Table 2 – Groundwater Monitoring (Quarterly – No Limits apply)

EPL ID	Pollutant	Units of Measure	Monitoring Frequency	No. of Samples for the Period	Date Sampled	Date Obtained	Min Value	Mean Value	Median Value	Max or Only Value
8	Ammonia	mg/L	Quarterly	0	-	-	-	-	-	-
	Bicarbonate	mg/L					-	-	-	-
	Calcium	mg/L					-	-	-	-
	Chloride	mg/L					-	-	-	-
	Conductivity	µs/cm					-	-	-	-
	Lead	mg/L					-	-	-	-
	Magnesium	mg/L					-	-	-	-
	Nitrate	mg/L					-	-	-	-
	Potassium	mg/L					-	-	-	-
	Sodium	mg/L					-	-	-	-
	Standing Water Level	m					-	-	-	-
	Sulphate	mg/L					-	-	-	-
pH	pH	-	-	-	-					
9	Ammonia	mg/L	Quarterly	0	-	-	-	-	-	-
	Bicarbonate	mg/L					-	-	-	-
	Calcium	mg/L					-	-	-	-
	Chloride	mg/L					-	-	-	-
	Conductivity	µs/cm					-	-	-	-
	Lead	mg/L					-	-	-	-
	Magnesium	mg/L					-	-	-	-
	Nitrate	mg/L					-	-	-	-



# WHITEHAVEN COAL

## WHITEHAVEN CHPP – MONTHLY MONITORING SUMMARY

EPL ID	Pollutant	Units of Measure	Monitoring Frequency	No. of Samples for the Period	Date Sampled	Date Obtained	Min Value	Mean Value	Median Value	Max or Only Value
	Potassium	mg/L					--	-	-	-
	Sodium	mg/L					-	-	-	-
	Standing Water Level	M					-	-	-	-
	Sulphate	mg/L					-	-	-	-
	pH	pH					-	-	-	-
10	Ammonia	mg/L	Quarterly	0	-	-	-	-	-	-
	Bicarbonate	mg/L					-	-	-	-
	Calcium	mg/L					-	-	-	-
	Chloride	mg/L					-	-	-	-
	Conductivity	µs/cm					-	-	-	-
	Lead	mg/L					-	-	-	-
	Magnesium	mg/L					-	-	-	-
	Nitrate	mg/L					-	-	-	-
	Potassium	mg/L					-	-	-	-
	Sodium	mg/L					-	-	-	-
	Standing Water Level	m					-	-	-	-
	Sulphate	mg/L					-	-	-	-
	pH	pH					-	-	-	-



## WHITEHAVEN CHPP – MONTHLY MONITORING SUMMARY

Table 3 – Monitoring (Quarterly Noise – Limits Apply)

EPL ID	Date	Measurement Period	Measured levels – CHPP – dB(A)		Limit(s)- dB(A)	Wind speed (m/s)	Observations	(Potential) Non-compliance /breach
			LA1, 1 minute	LAeq, 15 minute				
N1	-	15 mins day	-		35		-	-
		15 mins evening	-		35			
		15 mins night	-		35			
		1 min night		-	45			

**Notes:**

**dB(A):** The overall level of a sound is usually expressed in terms of dBA, which is measured using a sound level meter with an “A-weighting” filter. This is an electronic filter having a frequency response corresponding approximately to that of human hearing.

**LAeq, 15 minute:** The A-weighted equivalent noise level (basically the average noise level). It is defined as the steady sound level that contains the same amount of acoustical energy as the corresponding time-varying sound, in this instance over a period of 15 minutes.

**LA1, 1 minute:** The noise level exceeded for 1% of the 15 minute interval.

**I/A:** When site noise is noted as inaudible (I/A), no site noise was audible at the monitoring location.

**Not Measurable (NM):** indicates that some site noise was audible, but indeterminate due to one of the following reasons:

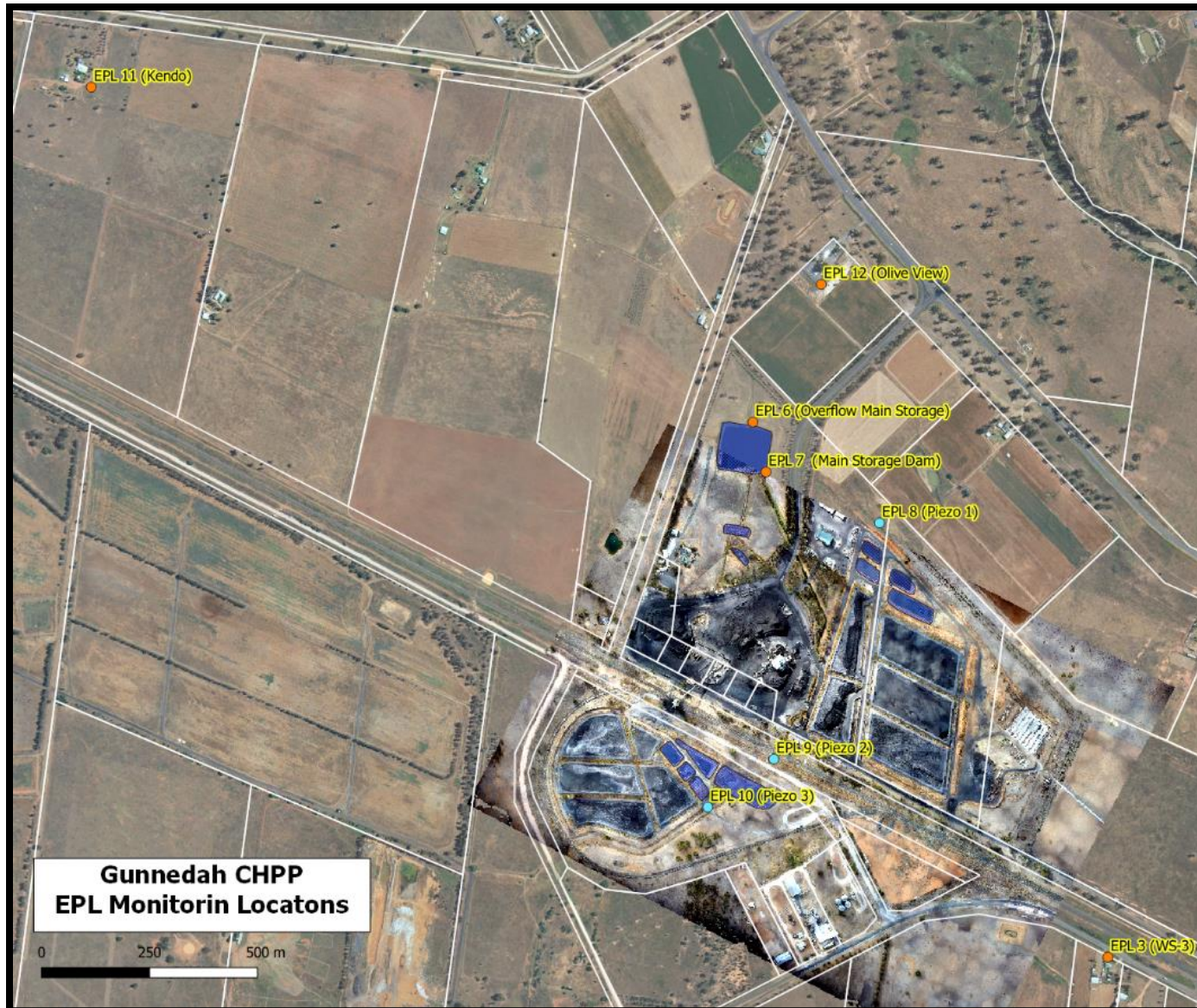
- site noise levels were insignificant and unlikely, in many cases, to be even noticed; or
- site noise levels were masked by another relatively loud noise source, but were estimated to be less than LAeq 30 dB, which is insignificant in terms of any applicable criterion.



# WHITEHAVEN COAL

## WHITEHAVEN CHPP – MONTHLY MONITORING SUMMARY

Figure 1 – EPL 3637 Monitoring Locations







## WHITEHAVEN CHPP – MONTHLY MONITORING SUMMARY

### Site Information

**EPL No:** 3637

**EPA Website Link:** <http://www.epa.nsw.gov.au/prpoeoapp/ViewPOEOLicence.aspx?DOCID=33514&SYSUID=1&LICID=3637>

**Licensee:** Whitehaven Coal Mining Limited

**Licensee Address:** Boggabri Road, Gunnedah NSW 2380

**EPL Monitoring Points:** See Figure 1 below

**Sampling Period:** September 2021

**Obtained Date:** 19 October 2021

**Publication Date:** 25 October 2021

**Table 1 - No Pollutant Limits Apply**

EPL ID	Pollutant	Units of Measure	Monitoring Frequency	No. of Measurements for the Month	Date Sampled	Date Obtained	Min Value	Mean Value	Median Value	Max or Only Value
3	Solid Particles	g/m <sup>2</sup> /month	Continuous	1	16/09/21	06/10/21	-	-	-	0.25
11	PM <sub>10</sub>	µg/m <sup>3</sup>	Every 6 days	6	Various	19/10/21	1.3	19.4	18.3	39.8
12	PM <sub>10</sub>	µg/m <sup>3</sup>	Every 6 days	6	Various	19/10/21	1.6	8.1	8.2	12.5
6	Conductivity	µs/cm	Each overflow event	0	-	-	-	-	-	-
	Oil and Grease	mg/L		0	-	-	-	-	-	-
	Total Organic Carbon	mg/L		0	-	-	-	-	-	-
	Total Suspended Solids	mg/L		0	-	-	-	-	-	-
	pH	pH		0	-	-	-	-	-	-
7	Conductivity	µs/cm	Quarterly	0	-	-	-	-	-	-
	Oil and Grease	mg/L					-	-	-	-
	Total Organic Carbon	mg/L					-	-	-	-
	Total Suspended Solids	mg/L					-	-	-	-
	pH	pH					-	-	-	-



## WHITEHAVEN CHPP – MONTHLY MONITORING SUMMARY

Table 2 – Groundwater Monitoring (Quarterly – No Limits apply)

EPL ID	Pollutant	Units of Measure	Monitoring Frequency	No. of Samples for the Period	Date Sampled	Date Obtained	Min Value	Mean Value	Median Value	Max or Only Value
8	Ammonia	mg/L	Quarterly	1	6/09/21	20/09/21	-	-	-	0.7
	Bicarbonate	mg/L					-	-	-	1400
	Calcium	mg/L					-	-	-	60
	Chloride	mg/L					-	-	-	2090
	Conductivity	µs/cm					-	-	-	8930
	Lead	mg/L					-	-	-	0.002
	Magnesium	mg/L					-	-	-	174
	Nitrate	mg/L					-	-	-	0.64
	Potassium	mg/L					-	-	-	24
	Sodium	mg/L					-	-	-	2040
	Standing Water Level	m					-	-	-	8.09
	Sulphate	mg/L					-	-	-	1300
pH	pH	-	-	-	7.8					
9	Ammonia	mg/L	Quarterly	1	6/09/21	20/09/21	-	-	-	0.01
	Bicarbonate	mg/L					-	-	-	840
	Calcium	mg/L					-	-	-	196
	Chloride	mg/L					-	-	-	1070
	Conductivity	µs/cm					-	-	-	5740
	Lead	mg/L					-	-	-	0.001
	Magnesium	mg/L					-	-	-	209
	Nitrate	mg/L					-	-	-	1.4



### WHITEHAVEN CHPP – MONTHLY MONITORING SUMMARY

EPL ID	Pollutant	Units of Measure	Monitoring Frequency	No. of Samples for the Period	Date Sampled	Date Obtained	Min Value	Mean Value	Median Value	Max or Only Value
	Potassium	mg/L					--	-	-	110
	Sodium	mg/L					-	-	-	556
	Standing Water Level	M					-	-	-	1.52
	Sulphate	mg/L					-	-	-	674
	pH	pH					-	-	-	7.7
10	Ammonia	mg/L	Quarterly	1	6/09/21	20/09/21	-	-	-	1.9
	Bicarbonate	mg/L					-	-	-	809
	Calcium	mg/L					-	-	-	195
	Chloride	mg/L					-	-	-	1330
	Conductivity	µs/cm					-	-	-	5710
	Lead	mg/L					-	-	-	0.002
	Magnesium	mg/L					-	-	-	204
	Nitrate	mg/L					-	-	-	1.4
	Potassium	mg/L					-	-	-	58
	Sodium	mg/L					-	-	-	671
	Standing Water Level	m					-	-	-	1.13
	Sulphate	mg/L					-	-	-	254
	pH	pH					-	-	-	7.6



## WHITEHAVEN CHPP – MONTHLY MONITORING SUMMARY

Table 3 – Monitoring (Quarterly Noise – Limits Apply)

EPL ID	Date	Measurement Period	Measured levels – CHPP – dB(A)		Limit(s)- dB(A)	Wind speed (m/s)	Observations	(Potential) Non-compliance /breach
			L <sub>A1</sub> , 1 minute	L <sub>Aeq</sub> , 15 minute				
N1	22/09/21	15 mins day	-	I/A	35	0.8 m/s NE	Site inaudible	No
		15 mins evening	-	30	35	0.9 m/s W/WSW	General activity 27-30 Engine revs 30-33	
		15 mins night	-	<25	35	Calm	General activity 20-25	
		1 min night	25	-	45	Calm		

Notes:

**dB(A):** The overall level of a sound is usually expressed in terms of dBA, which is measured using a sound level meter with an “A-weighting” filter. This is an electronic filter having a frequency response corresponding approximately to that of human hearing.

**L<sub>Aeq</sub>, 15 minute:** The A-weighted equivalent noise level (basically the average noise level). It is defined as the steady sound level that contains the same amount of acoustical energy as the corresponding time-varying sound, in this instance over a period of 15 minutes.

**L<sub>A1</sub>, 1 minute:** The noise level exceeded for 1% of the 15 minute interval.

**I/A:** When site noise is noted as inaudible (I/A), no site noise was audible at the monitoring location.

**Not Measurable (NM):** indicates that some site noise was audible, but indeterminate due to one of the following reasons:

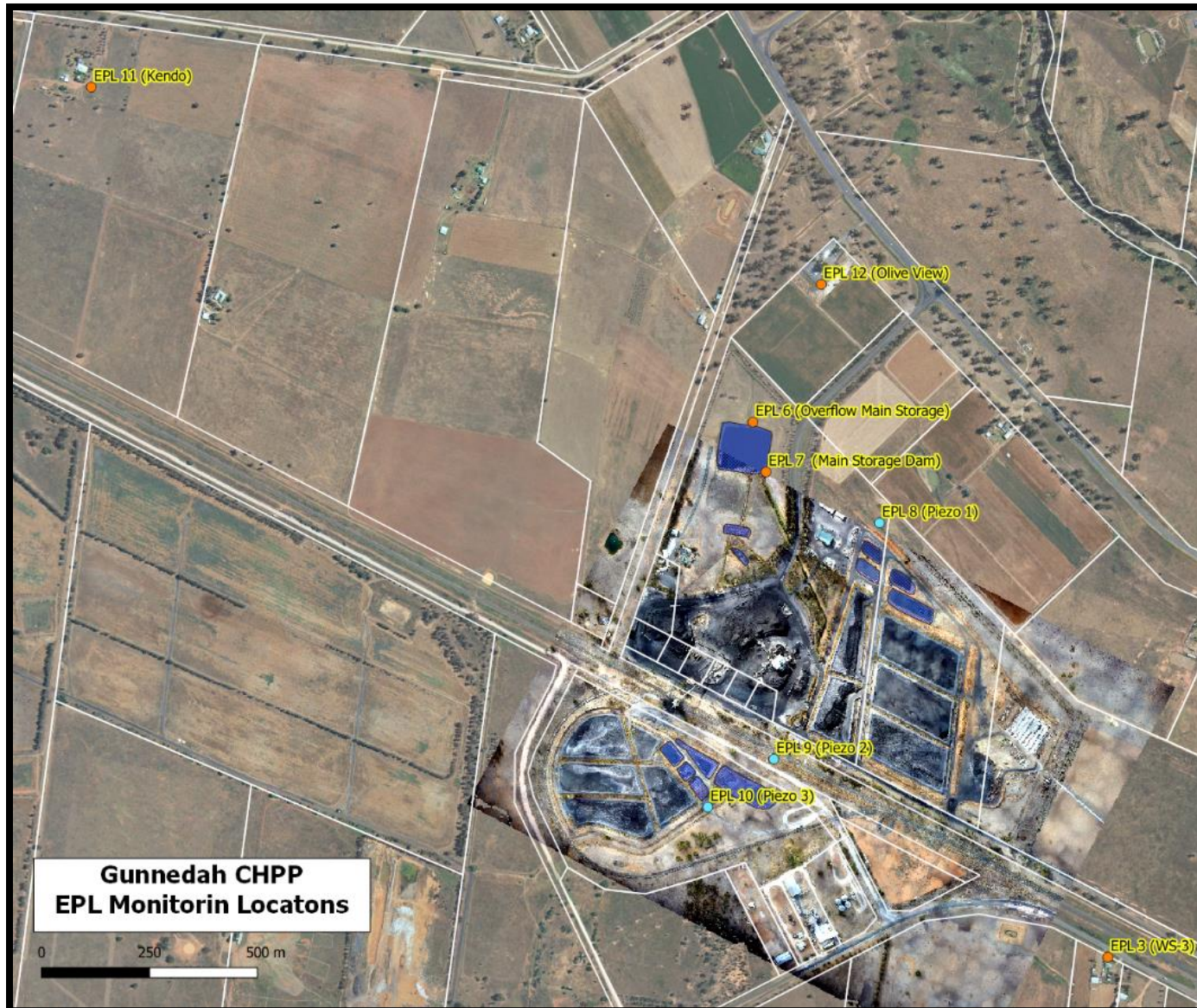
- site noise levels were insignificant and unlikely, in many cases, to be even noticed; or
- site noise levels were masked by another relatively loud noise source, but were estimated to be less than L<sub>Aeq</sub> 30 dB, which is insignificant in terms of any applicable criterion.



# WHITEHAVEN COAL

## WHITEHAVEN CHPP – MONTHLY MONITORING SUMMARY

Figure 1 – EPL 3637 Monitoring Locations





## WHITEHAVEN CHPP – MONTHLY MONITORING SUMMARY

### Site Information

**EPL No:** 3637

**EPA Website Link:** <http://www.epa.nsw.gov.au/prpoeoapp/ViewPOEOLicence.aspx?DOCID=33514&SYSUID=1&LICID=3637>

**Licensee:** Whitehaven Coal Mining Limited

**Licensee Address:** Boggabri Road, Gunnedah NSW 2380

**EPL Monitoring Points:** See Figure 1 below

**Sampling Period:** October 2021

**Obtained Date:** 12 November 2021

**Publication Date:** 17 November 2021

**Table 1 - No Pollutant Limits Apply**

EPL ID	Pollutant	Units of Measure	Monitoring Frequency	No. of Measurements for the Month	Date Sampled	Date Obtained	Min Value	Mean Value	Median Value	Max or Only Value
3	Solid Particles	g/m <sup>2</sup> /month	Continuous	1	18/10/21	25/10/2021	-	-	-	0.53
11	PM <sub>10</sub>	µg/m <sup>3</sup>	Every 6 days	5	Various	12/11/2021	8.9	16.6	17.7	23.4
12	PM <sub>10</sub>	µg/m <sup>3</sup>	Every 6 days	5	Various	12/11/2021	0.7	7.5	8.8	10.1
6	Conductivity	µs/cm	Each overflow event	0	-	-	-	-	-	-
	Oil and Grease	mg/L		0	-	-	-	-	-	-
	Total Organic Carbon	mg/L		0	-	-	-	-	-	-
	Total Suspended Solids	mg/L		0	-	-	-	-	-	-
	pH	pH		0	-	-	-	-	-	-
7	Conductivity	µs/cm	Quarterly	0	-	-	-	-	-	-
	Oil and Grease	mg/L					-	-	-	-
	Total Organic Carbon	mg/L					-	-	-	-
	Total Suspended Solids	mg/L					-	-	-	-
	pH	pH					-	-	-	-



## WHITEHAVEN CHPP – MONTHLY MONITORING SUMMARY

Table 2 – Groundwater Monitoring (Quarterly – No Limits apply)

EPL ID	Pollutant	Units of Measure	Monitoring Frequency	No. of Samples for the Period	Date Sampled	Date Obtained	Min Value	Mean Value	Median Value	Max or Only Value
8	Ammonia	mg/L	Quarterly	0			-	-	-	-
	Bicarbonate	mg/L					-	-	-	-
	Calcium	mg/L					-	-	-	-
	Chloride	mg/L					-	-	-	-
	Conductivity	µs/cm					-	-	-	-
	Lead	mg/L					-	-	-	-
	Magnesium	mg/L					-	-	-	-
	Nitrate	mg/L					-	-	-	-
	Potassium	mg/L					-	-	-	-
	Sodium	mg/L					-	-	-	-
	Standing Water Level	m					-	-	-	-
	Sulphate	mg/L					-	-	-	-
pH	pH	-	-	-	-					
9	Ammonia	mg/L	Quarterly	0			-	-	-	-
	Bicarbonate	mg/L					-	-	-	-
	Calcium	mg/L					-	-	-	-
	Chloride	mg/L					-	-	-	-
	Conductivity	µs/cm					-	-	-	-
	Lead	mg/L					-	-	-	-
	Magnesium	mg/L					-	-	-	-
	Nitrate	mg/L					-	-	-	-



### WHITEHAVEN CHPP – MONTHLY MONITORING SUMMARY

EPL ID	Pollutant	Units of Measure	Monitoring Frequency	No. of Samples for the Period	Date Sampled	Date Obtained	Min Value	Mean Value	Median Value	Max or Only Value
	Potassium	mg/L					--	-	-	-
	Sodium	mg/L					-	-	-	-
	Standing Water Level	M					-	-	-	-
	Sulphate	mg/L					-	-	-	-
	pH	pH					-	-	-	-
10	Ammonia	mg/L	Quarterly	0			-	-	-	-
	Bicarbonate	mg/L					-	-	-	-
	Calcium	mg/L					-	-	-	-
	Chloride	mg/L					-	-	-	-
	Conductivity	µs/cm					-	-	-	-
	Lead	mg/L					-	-	-	-
	Magnesium	mg/L					-	-	-	-
	Nitrate	mg/L					-	-	-	-
	Potassium	mg/L					-	-	-	-
	Sodium	mg/L					-	-	-	-
	Standing Water Level	m					-	-	-	-
	Sulphate	mg/L					-	-	-	-
	pH	pH					-	-	-	-





## WHITEHAVEN CHPP – MONTHLY MONITORING SUMMARY

Table 3 – Monitoring (Quarterly Noise – Limits Apply)

EPL ID	Date	Measurement Period	Measured levels – CHPP – dB(A)		Limit(s)- dB(A)	Wind speed (m/s)	(Potential) Non-compliance /breach
			LA1, 1 minute	LAeq, 15 minute			
N1	-	15 mins day	-		35		
		15 mins evening	-		35		
		15 mins night	-		35		
		1 min night		-	45		

**Notes:**

**dB(A):** The overall level of a sound is usually expressed in terms of dBA, which is measured using a sound level meter with an “A-weighting” filter. This is an electronic filter having a frequency response corresponding approximately to that of human hearing.

**LAeq, 15 minute:** The A-weighted equivalent noise level (basically the average noise level). It is defined as the steady sound level that contains the same amount of acoustical energy as the corresponding time-varying sound, in this instance over a period of 15 minutes.

**LA1, 1 minute:** The noise level exceeded for 1% of the 15 minute interval.

**I/A:** When site noise is noted as inaudible (I/A), no site noise was audible at the monitoring location.

**Not Measurable (NM):** indicates that some site noise was audible, but indeterminate due to one of the following reasons:

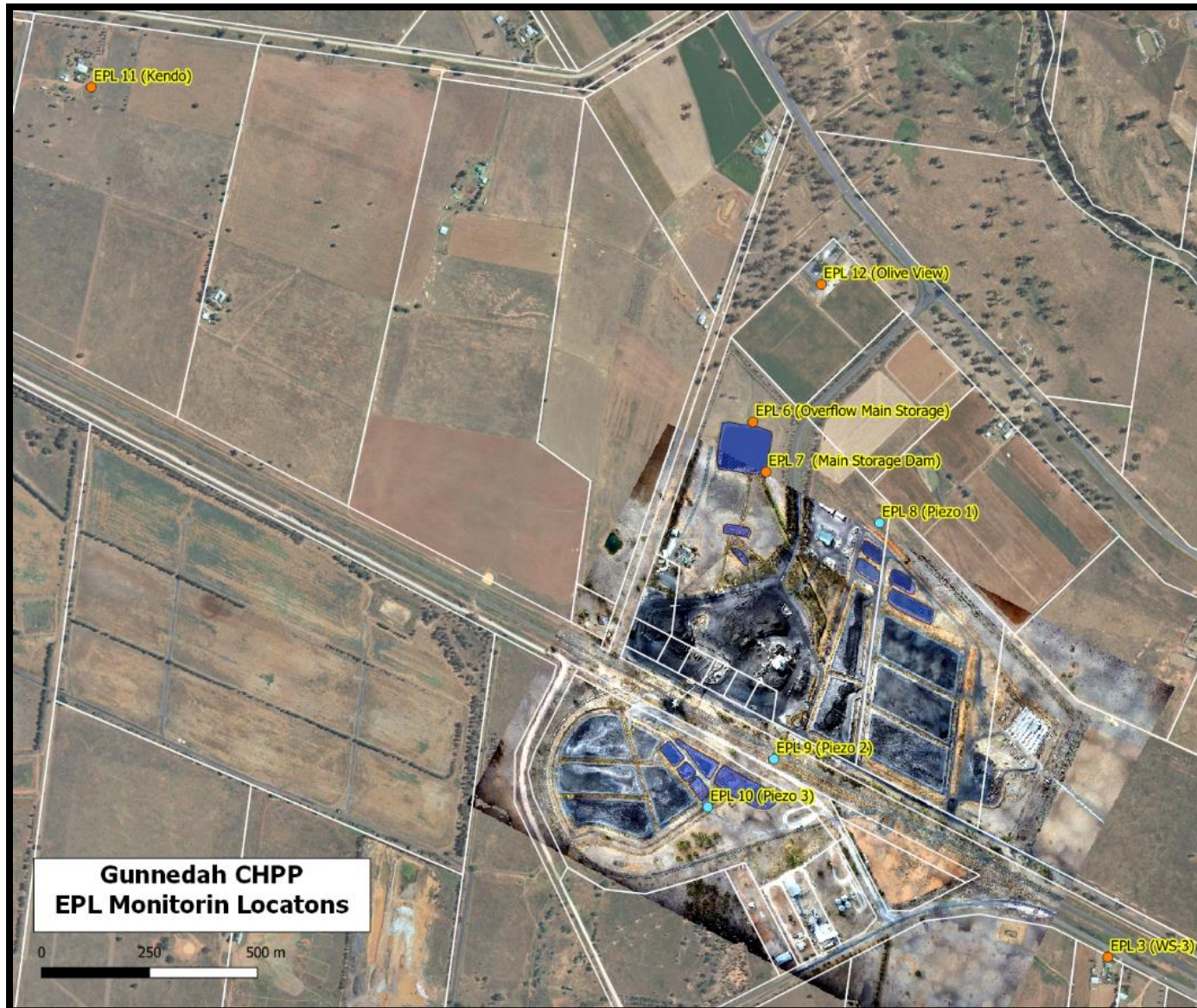
- site noise levels were insignificant and unlikely, in many cases, to be even noticed; or
- site noise levels were masked by another relatively loud noise source, but were estimated to be less than LAeq 30 dB, which is insignificant in terms of any applicable criterion.



# WHITEHAVEN COAL

## WHITEHAVEN CHPP – MONTHLY MONITORING SUMMARY

Figure 1 – EPL 3637 Monitoring Locations





## WHITEHAVEN CHPP – MONTHLY MONITORING SUMMARY

### Site Information

**EPL No:** 3637

**EPA Website Link:** <http://www.epa.nsw.gov.au/prpoeoapp/ViewPOEOLicence.aspx?DOCID=33514&SYSUID=1&LICID=3637>

**Licensee:** Whitehaven Coal Mining Limited

**Licensee Address:** Boggabri Road, Gunnedah NSW 2380

**EPL Monitoring Points:** See Figure 1 below

**Sampling Period:** November 2021

**Obtained Date:** 20 December 2021

**Publication Date:** 22 December 2021

**Table 1 - No Pollutant Limits Apply**

EPL ID	Pollutant	Units of Measure	Monitoring Frequency	No. of Measurements for the Month	Date Sampled	Date Obtained	Min Value	Mean Value	Median Value	Max or Only Value
3	Solid Particles	g/m <sup>2</sup> /month	Continuous	1	18/11/21	20/12/2021	-	-	-	0.2
11	PM <sub>10</sub>	µg/m <sup>3</sup>	Every 6 days	5	Various	13/12/21	3.5	26.6	4.7	36.4
12	PM <sub>10</sub>	µg/m <sup>3</sup>	Every 6 days	5	Various	13/12/21	0.5	5.0	4.8	7.9
6	Conductivity	µs/cm	Each overflow event	0	-	-	-	-	-	-
	Oil and Grease	mg/L		0	-	-	-	-	-	-
	Total Organic Carbon	mg/L		0	-	-	-	-	-	-
	Total Suspended Solids	mg/L		0	-	-	-	-	-	-
	pH	pH		0	-	-	-	-	-	-
7	Conductivity	µs/cm	Quarterly	0	-	-	-	-	-	-
	Oil and Grease	mg/L					-	-	-	-
	Total Organic Carbon	mg/L					-	-	-	-
	Total Suspended Solids	mg/L					-	-	-	-
	pH	pH					-	-	-	-



## WHITEHAVEN CHPP – MONTHLY MONITORING SUMMARY

Table 2 – Groundwater Monitoring (Quarterly – No Limits apply)

EPL ID	Pollutant	Units of Measure	Monitoring Frequency	No. of Samples for the Period	Date Sampled	Date Obtained	Min Value	Mean Value	Median Value	Max or Only Value
8	Ammonia	mg/L	Quarterly	0			-	-	-	-
	Bicarbonate	mg/L					-	-	-	-
	Calcium	mg/L					-	-	-	-
	Chloride	mg/L					-	-	-	-
	Conductivity	µs/cm					-	-	-	-
	Lead	mg/L					-	-	-	-
	Magnesium	mg/L					-	-	-	-
	Nitrate	mg/L					-	-	-	-
	Potassium	mg/L					-	-	-	-
	Sodium	mg/L					-	-	-	-
	Standing Water Level	m					-	-	-	-
	Sulphate	mg/L					-	-	-	-
pH	pH	-	-	-	-					
9	Ammonia	mg/L	Quarterly	0			-	-	-	-
	Bicarbonate	mg/L					-	-	-	-
	Calcium	mg/L					-	-	-	-
	Chloride	mg/L					-	-	-	-
	Conductivity	µs/cm					-	-	-	-
	Lead	mg/L					-	-	-	-
	Magnesium	mg/L					-	-	-	-
	Nitrate	mg/L					-	-	-	-



### WHITEHAVEN CHPP – MONTHLY MONITORING SUMMARY

EPL ID	Pollutant	Units of Measure	Monitoring Frequency	No. of Samples for the Period	Date Sampled	Date Obtained	Min Value	Mean Value	Median Value	Max or Only Value
	Potassium	mg/L					--	-	-	-
	Sodium	mg/L					-	-	-	-
	Standing Water Level	M					-	-	-	-
	Sulphate	mg/L					-	-	-	-
	pH	pH					-	-	-	-
10	Ammonia	mg/L	Quarterly	0			-	-	-	-
	Bicarbonate	mg/L					-	-	-	-
	Calcium	mg/L					-	-	-	-
	Chloride	mg/L					-	-	-	-
	Conductivity	µs/cm					-	-	-	-
	Lead	mg/L					-	-	-	-
	Magnesium	mg/L					-	-	-	-
	Nitrate	mg/L					-	-	-	-
	Potassium	mg/L					-	-	-	-
	Sodium	mg/L					-	-	-	-
	Standing Water Level	m					-	-	-	-
	Sulphate	mg/L					-	-	-	-
	pH	pH					-	-	-	-



## WHITEHAVEN CHPP – MONTHLY MONITORING SUMMARY

Table 3 – Monitoring (Quarterly Noise – Limits Apply)

EPL ID	Date	Measurement Period	Measured levels – CHPP – dB(A)		Limit(s)- dB(A)	Wind speed (m/s)	(Potential) Non-compliance /breach
			LA1, 1 minute	LAeq, 15 minute			
N1	-	15 mins day	-		35		
		15 mins evening	-		35		
		15 mins night	-		35		
		1 min night		-	45		

**Notes:**

**dB(A):** The overall level of a sound is usually expressed in terms of dBA, which is measured using a sound level meter with an “A-weighting” filter. This is an electronic filter having a frequency response corresponding approximately to that of human hearing.

**LAeq, 15 minute:** The A-weighted equivalent noise level (basically the average noise level). It is defined as the steady sound level that contains the same amount of acoustical energy as the corresponding time-varying sound, in this instance over a period of 15 minutes.

**LA1, 1 minute:** The noise level exceeded for 1% of the 15 minute interval.

**I/A:** When site noise is noted as inaudible (I/A), no site noise was audible at the monitoring location.

**Not Measurable (NM):** indicates that some site noise was audible, but indeterminate due to one of the following reasons:

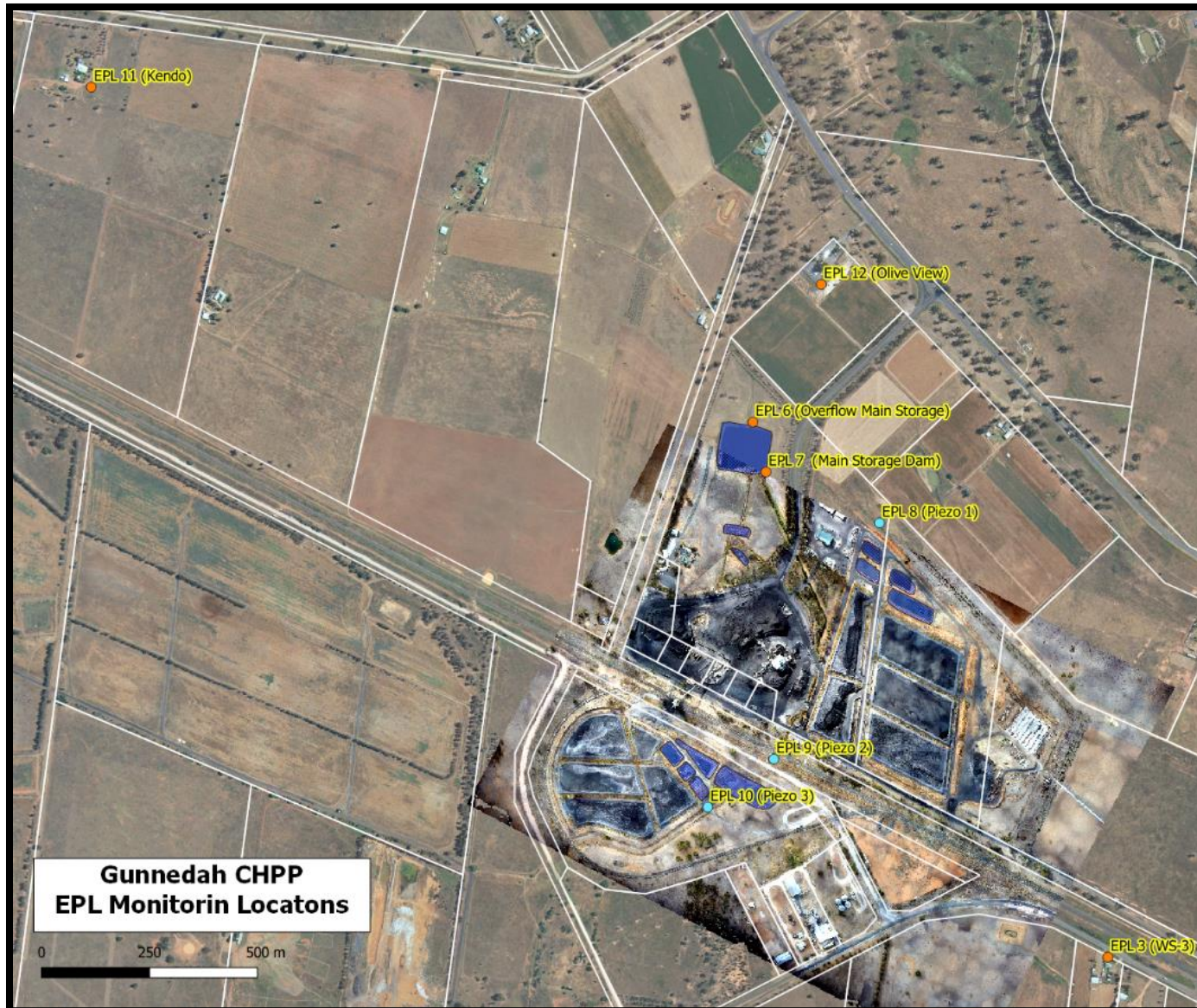
- site noise levels were insignificant and unlikely, in many cases, to be even noticed; or
- site noise levels were masked by another relatively loud noise source, but were estimated to be less than LAeq 30 dB, which is insignificant in terms of any applicable criterion.



# WHITEHAVEN COAL

## WHITEHAVEN CHPP – MONTHLY MONITORING SUMMARY

Figure 1 – EPL 3637 Monitoring Locations





## WHITEHAVEN CHPP – MONTHLY MONITORING SUMMARY

### Site Information

EPL No: 3637

EPA Website Link: <http://www.epa.nsw.gov.au/prpoeoapp/ViewPOEOLicence.aspx?DOCID=33514&SYSUID=1&LICID=3637>

Licensee: Whitehaven Coal Mining Limited

Licensee Address: Boggabri Road, Gunnedah NSW 2380

EPL Monitoring Points: See Figure 1 below

Sampling Period: December 2021

Obtained Date: 16 January 2022

Publication Date: 24 January 2022

**Table 1 - No Pollutant Limits Apply**

EPL ID	Pollutant	Units of Measure	Monitoring Frequency	No. of Measurements for the Month	Date Sampled	Date Obtained	Min Value	Mean Value	Median Value	Max or Only Value
3	Solid Particles	g/m <sup>2</sup> /month	Continuous	1	16/12/21	30/12/21	-	-	-	0.66
11	PM <sub>10</sub>	µg/m <sup>3</sup>	Every 6 days	5	Various	17/01/22	3.6	9.6	4.5	26.3
12	PM <sub>10</sub>	µg/m <sup>3</sup>	Every 6 days	5	Various	17/01/22	3.0	5.8	5.4	10.6
6	Conductivity	µs/cm	Each overflow event	0	-	-	-	-	-	-
	Oil and Grease	mg/L		0	-	-	-	-	-	-
	Total Organic Carbon	mg/L		0	-	-	-	-	-	-
	Total Suspended Solids	mg/L		0	-	-	-	-	-	-
	pH	pH		0	-	-	-	-	-	-
7	Conductivity	µs/cm	Quarterly	1	9/12/2021	21/12/2021	-	-	-	1180
	Oil and Grease	mg/L					-	-	-	<5
	Total Organic Carbon	mg/L					-	-	-	9
	Total Suspended Solids	mg/L					-	-	-	18





## WHITEHAVEN CHPP – MONTHLY MONITORING SUMMARY

EPL ID	Pollutant	Units of Measure	Monitoring Frequency	No. of Measurements for the Month	Date Sampled	Date Obtained	Min Value	Mean Value	Median Value	Max or Only Value
	pH	pH					-	-	-	8.3

Table 2 – Groundwater Monitoring (Quarterly – No Limits apply)

EPL ID	Pollutant	Units of Measure	Monitoring Frequency	No. of Samples for the Period	Date Sampled	Date Obtained	Min Value	Mean Value	Median Value	Max or Only Value
8	Ammonia	mg/L	Quarterly	1	9/12/21	23/12/21	-	-	-	0.04
	Bicarbonate	mg/L					-	-	-	1140
	Calcium	mg/L					-	-	-	66
	Chloride	mg/L					-	-	-	2180
	Conductivity	µs/cm					-	-	-	9670
	Lead	mg/L					-	-	-	0.001
	Magnesium	mg/L					-	-	-	186
	Nitrate	mg/L					-	-	-	2.14
	Potassium	mg/L					-	-	-	28
	Sodium	mg/L					-	-	-	2120
	Standing Water Level	m					-	-	-	5.26
	Sulphate	mg/L					-	-	-	1410
pH	pH	-	-	-	7.7					
9	Ammonia	mg/L	Quarterly	1	9/12/21	23/12/21	-	-	-	0.08
	Bicarbonate	mg/L					-	-	-	697
	Calcium	mg/L					-	-	-	232



### WHITEHAVEN CHPP – MONTHLY MONITORING SUMMARY

EPL ID	Pollutant	Units of Measure	Monitoring Frequency	No. of Samples for the Period	Date Sampled	Date Obtained	Min Value	Mean Value	Median Value	Max or Only Value
	Chloride	mg/L					-	-	-	1180
	Conductivity	µs/cm					-	-	-	5890
	Lead	mg/L					-	-	-	0.001
	Magnesium	mg/L					-	-	-	229
	Nitrate	mg/L					-	-	-	1.15
	Potassium	mg/L					--	-	-	119
	Sodium	mg/L					-	-	-	695
	Standing Water Level	M					-	-	-	1.03
	Sulphate	mg/L					-	-	-	699
	pH	pH					-	-	-	7.4
10	Ammonia	mg/L	Quarterly	1	9/12/21	23/12/21	-	-	-	0.06
	Bicarbonate	mg/L					-	-	-	647
	Calcium	mg/L					-	-	-	208
	Chloride	mg/L					-	-	-	1470
	Conductivity	µs/cm					-	-	-	5950
	Lead	mg/L					-	-	-	0.001
	Magnesium	mg/L					-	-	-	216
	Nitrate	mg/L					-	-	-	3.04
	Potassium	mg/L					-	-	-	64
	Sodium	mg/L					-	-	-	703
	Standing Water Level	m					-	-	-	0.72
	Sulphate	mg/L					-	-	-	274
	pH	pH					-	-	-	7.3



## WHITEHAVEN CHPP – MONTHLY MONITORING SUMMARY

**Table 3 – Monitoring (Quarterly Noise – Limits Apply)**

EPL ID	Date	Measurement Period	Measured levels – CHPP – dB(A)		Limit(s)- dB(A)	Wind speed (m/s)	Comments	(Potential) Non-compliance /breach
			L <sub>A1</sub> , 1 minute	L <sub>Aeq</sub> , 15 minute				
N1	14/12/21	15 mins day	-	N/M	35	1.8	CHPP barely audible	No
		15 mins evening	-	30	35	2.5	-	
		15 mins night	-	31	35	2.4	-	
		1 min night	35	-	45	2.4	-	

Notes:

**dB(A):** The overall level of a sound is usually expressed in terms of dBA, which is measured using a sound level meter with an “A-weighting” filter. This is an electronic filter having a frequency response corresponding approximately to that of human hearing.

**L<sub>Aeq</sub>, 15 minute:** The A-weighted equivalent noise level (basically the average noise level). It is defined as the steady sound level that contains the same amount of acoustical energy as the corresponding time-varying sound, in this instance over a period of 15 minutes.

**L<sub>A1</sub>, 1 minute:** The noise level exceeded for 1% of the 15 minute interval.

**I/A:** When site noise is noted as inaudible (I/A), no site noise was audible at the monitoring location.

**Not Measurable (NM):** indicates that some site noise was audible, but indeterminate due to one of the following reasons:

- site noise levels were insignificant and unlikely, in many cases, to be even noticed; or
- site noise levels were masked by another relatively loud noise source, but were estimated to be less than L<sub>Aeq</sub> 30 dB, which is insignificant in terms of any applicable criterion.

## WHITEHAVEN CHPP – MONTHLY MONITORING SUMMARY

Figure 1 – EPL 3637 Monitoring Locations

