



## WHITEHAVEN CHPP – MONTHLY MONITORING SUMMARY

### Site Information

EPL No: 3637

EPA Website Link: <http://www.environment.nsw.gov.au/prpoeoapp/ViewPOEOLicence.aspx?DOCID=29173&SYSUID=1&LICID=3637>

Licensee: Whitehaven Coal Mining Limited

Licensee Address: Boggabri Road, Gunnedah NSW 2380

EPL Monitoring Points: See Figure 1 below

Sampling Period: April 2012

Publication Date: 22<sup>nd</sup> June 2012 (re-published 16<sup>th</sup> August 2012)

**Table 1 - No Pollutant Limits Apply**

EPL ID	Pollutant	Units of Measure	Monitoring Frequency	No. of Measurements for the Month	Date Sampled	Date Obtained	Min Value	Mean Value	Median Value	Max or Only Value
1	Solid Particles	g/m <sup>2</sup> /month	Continuous	1	18/4/12	27/4/12	-	-	-	1.5
2	Solid Particles	g/m <sup>2</sup> /month	Continuous	1	18/4/12	27/4/12	-	-	-	1.4
3	Solid Particles	g/m <sup>2</sup> /month	Continuous	1	18/4/12	27/4/12	-	-	-	2.0
4	Solid Particles	g/m <sup>2</sup> /month	Continuous	1	18/4/12	27/4/12	-	-	-	1.0
5	Solid Particles	g/m <sup>2</sup> /month	Continuous	1	18/4/12	27/4/12	-	-	-	1.2
	PM <sub>10</sub>	µg/m <sup>3</sup>	Every 6 days	5	Various	8/5/12	5.8	10.8	9	16.9
6	Conductivity	ms/cm	Each overflow event	0	-	-	-	-	-	-
	Oil and Grease	mg/L		0	-	-	-	-	-	-
	Total Organic Carbon	mg/L		0	-	-	-	-	-	-
	Total Suspended Solids	mg/L		0	-	-	-	-	-	-
	pH	pH		0	-	-	-	-	-	-
7	Conductivity	ms/cm	Quarterly	0	-	-	-	-	-	-
	Oil and Grease	mg/L		0	-	-	-	-	-	-
	Total Organic Carbon	mg/L		0	-	-	-	-	-	-
	Total Suspended Solids	mg/L		0	-	-	-	-	-	-
	pH	pH		0	-	-	-	-	-	-



**WHITEHAVEN CHPP – MONTHLY MONITORING SUMMARY**

Table 2 – Monitoring (Quarterly – No Limits apply)

EPL ID	Pollutant	Units of Measure	Monitoring Frequency	No. of Samples for the Period	Date Sampled	Date Obtained	Min Value	Mean Value	Median Value	Max Value
8	Ammonia	mg/L	Quarterly	0	-	-	-	-	-	-
	Bicarbonate	mg/L		0	-	-	-	-	-	-
	Calcium	mg/L		0	-	-	-	-	-	-
	Chloride	mg/L		0	-	-	-	-	-	-
	Conductivity	µs/cm		0	-	-	-	-	-	-
	Lead	mg/L		0	-	-	-	-	-	-
	Magnesium	mg/L		0	-	-	-	-	-	-
	Nitrate	mg/L		0	-	-	-	-	-	-
	Potassium	mg/L		0	-	-	-	-	-	-
	Sodium	mg/L		0	-	-	-	-	-	-
	Standing Water Level	m		0	-	-	-	-	-	-
	Sulphate	mg/L		0	-	-	-	-	-	-
	pH	pH		0	-	-	-	-	-	-
9	Ammonia	mg/L	Quarterly	0	-	-	-	-	-	-
	Bicarbonate	mg/L		0	-	-	-	-	-	-
	Calcium	mg/L		0	-	-	-	-	-	-
	Chloride	mg/L		0	-	-	-	-	-	-
	Conductivity	µs/cm		0	-	-	-	-	-	-
	Lead	mg/L		0	-	-	-	-	-	-
	Magnesium	mg/L		0	-	-	-	-	-	-
	Nitrate	mg/L		0	-	-	-	-	-	-
	Potassium	mg/L		0	-	-	-	-	-	-
	Sodium	mg/L		0	-	-	-	-	-	-
	Standing Water Level	m		0	-	-	-	-	-	-
	Sulphate	mg/L		0	-	-	-	-	-	-
	pH	pH		0	-	-	-	-	-	-



**WHITEHAVEN CHPP – MONTHLY MONITORING SUMMARY**

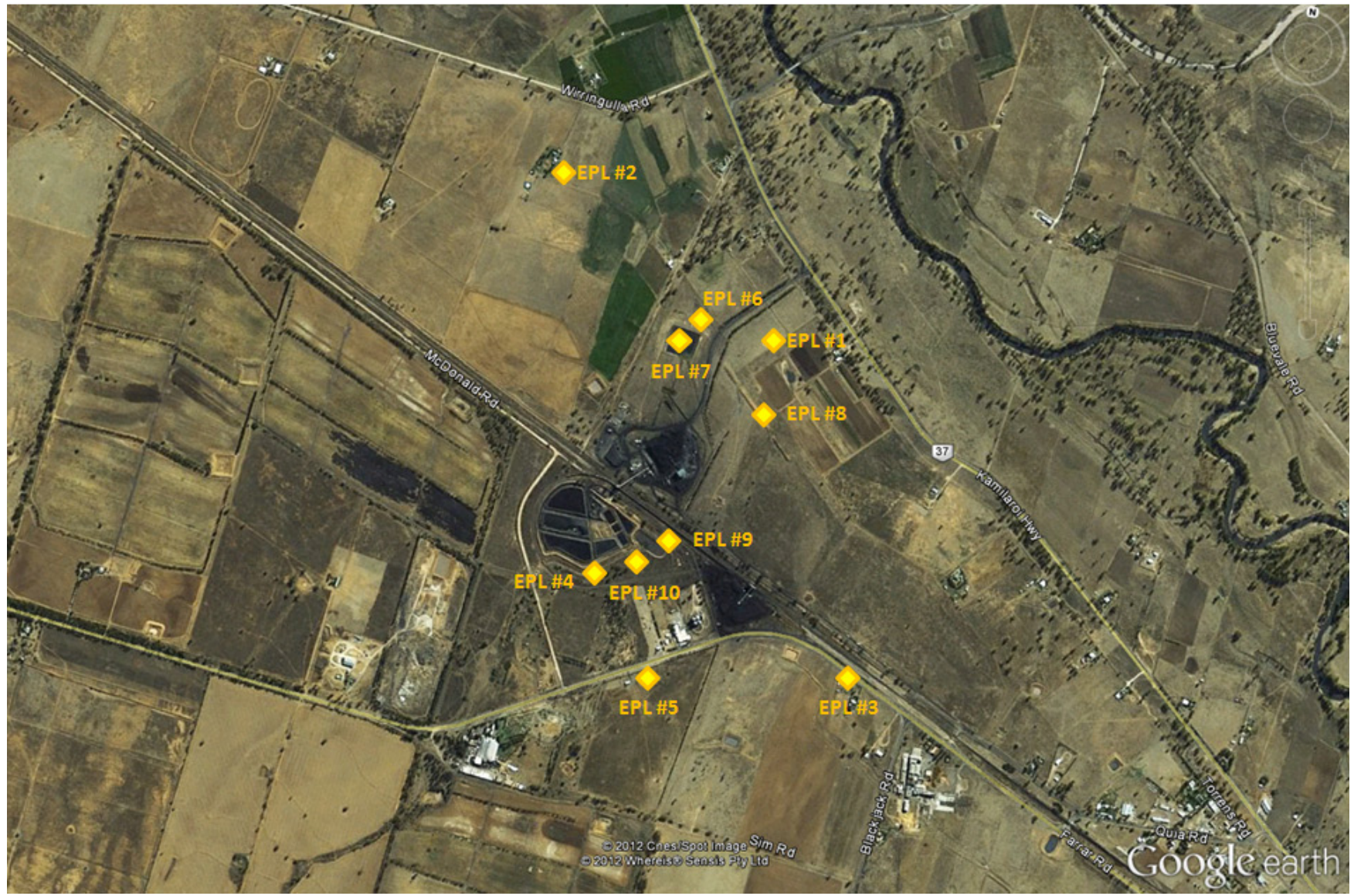
10	Ammonia	mg/L	Quarterly	0	-	-	-	-	-	-	
	Bicarbonate	mg/L		0	-	-	-	-	-	-	-
	Calcium	mg/L		0	-	-	-	-	-	-	-
	Chloride	mg/L		0	-	-	-	-	-	-	-
	Conductivity	µs/cm		0	-	-	-	-	-	-	-
	Lead	mg/L		0	-	-	-	-	-	-	-
	Magnesium	mg/L		0	-	-	-	-	-	-	-
	Nitrate	mg/L		0	-	-	-	-	-	-	-
	Potassium	mg/L		0	-	-	-	-	-	-	-
	Sodium	mg/L		0	-	-	-	-	-	-	-
	Standing Water Level	m		0	-	-	-	-	-	-	-
	Sulphate	mg/L		0	-	-	-	-	-	-	-
	pH	pH		0	-	-	-	-	-	-	-

**Table 3 – Monitoring (Quarterly Noise – Limits Apply)**

EPL ID	Date	Start Time	Measurement Period	Measured levels – All sources – dB(A)		Limit(s)	Weather	Observations	(Potential) Non-compliance /breach
				L <sub>A1, 1</sub> Minute	L <sub>Aeq, 15</sub> Minute				
N1	27/4/12	2:52pm	15 minutes		50	<b>Day - 38</b>	Calm	Traffic (50), birds (38), <b>CHPP (22)</b>	No
	27/4/12	6:39pm	15 minutes		51	<b>Evening - 37</b>	Calm	Traffic (49), insects (47), <b>CHPP (37)</b>	No
	27/4/12	10:05pm	15 minutes		44	<b>Night - 35</b>	Calm	Traffic (44), <b>CHPP (33)</b>	No
	27/4/12	10:05pm	15 minutes	37		<b>Night - 45</b>	Calm		No

**WHITEHAVEN CHPP – MONTHLY MONITORING SUMMARY**

Figure 1 – EPL 3637 Monitoring Locations





**WHITEHAVEN CHPP – MONTHLY MONITORING SUMMARY**
**Site Information**

EPL No: 3637

EPA Website Link: <http://www.environment.nsw.gov.au/prpoeoapp/ViewPOEOLicence.aspx?DOCID=29173&SYSUID=1&LICID=3637>

Licensee: Whitehaven Coal Mining Limited

Licensee Address: Boggabri Road, Gunnedah NSW 2380

EPL Monitoring Points: See Figure 1 below

Sampling Period: May 2012

Publication Date: 22<sup>nd</sup> June 2012 (re-published 16<sup>th</sup> August 2012)

**Table 1 - No Pollutant Limits Apply**

EPL ID	Pollutant	Units of Measure	Monitoring Frequency	No. of Measurements for the Month	Date Sampled	Date Obtained	Min Value	Mean Value	Median Value	Max or Only Value
1	Solid Particles	g/m <sup>2</sup> /month	Continuous	1	18/5/12	29/5/12	-	-	-	2.8
2	Solid Particles	g/m <sup>2</sup> /month	Continuous	1	18/5/12	29/5/12	-	-	-	0.6
3	Solid Particles	g/m <sup>2</sup> /month	Continuous	1	18/5/12	29/5/12	-	-	-	0.6
4	Solid Particles	g/m <sup>2</sup> /month	Continuous	1	18/5/12	29/5/12	-	-	-	0.6
5	Solid Particles	g/m <sup>2</sup> /month	Continuous	1	18/5/12	29/5/12	-	-	-	1.6
	PM <sub>10</sub>	µg/m <sup>3</sup>	Every 6 days	5	Various	8/6/12	1.2	8.34	8.4	16.8
6	Conductivity	ms/cm	Each overflow event	0	-	-	-	-	-	-
	Oil and Grease	mg/L		0	-	-	-	-	-	-
	Total Organic Carbon	mg/L		0	-	-	-	-	-	-
	Total Suspended Solids	mg/L		0	-	-	-	-	-	-
	pH	pH		0	-	-	-	-	-	-
7	Conductivity	ms/cm	Quarterly	1	1/5/12	14/5/12	1420	1420	1420	1420
	Oil and Grease	mg/L		1	1/5/12	14/5/12	<5	<5	<5	<5
	Total Organic Carbon	mg/L		1	1/5/12	14/5/12	5	5	5	5
	Total Suspended Solids	mg/L		1	1/5/12	14/5/12	31	31	31	31
	pH	pH		1	1/5/12	14/5/12	8.16	8.16	8.16	8.16



**WHITEHAVEN CHPP – MONTHLY MONITORING SUMMARY**

**Table 2 – Monitoring (Quarterly – No Limits apply)**

EPL ID	Pollutant	Units of Measure	Monitoring Frequency	No. of Samples for the Period	Date Sampled	Date Obtained	Min Value	Mean Value	Median Value	Max Value
8	Ammonia	mg/L	Quarterly	1	24/5/12	1/6/12	<0.01	<0.01	<0.01	<0.01
	Bicarbonate	mg/L		1	24/5/12	1/6/12	1350	1350	1350	1350
	Calcium	mg/L		1	24/5/12	1/6/12	28	28	28	28
	Chloride	mg/L		1	24/5/12	1/6/12	1240	1240	1240	1240
	Conductivity	µs/cm		1	24/5/12	1/6/12	6810	6810	6810	6810
	Lead	mg/L		1	24/5/12	1/6/12	0.002	0.002	0.002	0.002
	Magnesium	mg/L		1	24/5/12	1/6/12	101	101	101	101
	Nitrate	mg/L		1	24/5/12	1/6/12	0.19	0.19	0.19	0.19
	Potassium	mg/L		1	24/5/12	1/6/12	23	23	23	23
	Sodium	mg/L		1	24/5/12	1/6/12	1480	1480	1480	1480
	Standing Water Level	m		1	24/5/12	1/6/12	5.11	5.11	5.11	5.11
	Sulphate	mg/L		1	24/5/12	1/6/12	595	595	595	595
pH	pH	1	24/5/12	1/6/12	7.93	7.93	7.93	7.93		
9	Ammonia	mg/L	Quarterly	1	24/5/12	1/6/12	0.02	0.02	0.02	0.02
	Bicarbonate	mg/L		1	24/5/12	1/6/12	776	776	776	776
	Calcium	mg/L		1	24/5/12	1/6/12	222	222	222	222
	Chloride	mg/L		1	24/5/12	1/6/12	1230	1230	1230	1230
	Conductivity	µs/cm		1	24/5/12	1/6/12	5960	5960	5960	5960
	Lead	mg/L		1	24/5/12	1/6/12	0.004	0.004	0.004	0.004
	Magnesium	mg/L		1	24/5/12	1/6/12	253	253	253	253
	Nitrate	mg/L		1	24/5/12	1/6/12	0.62	0.62	0.62	0.62
	Potassium	mg/L		1	24/5/12	1/6/12	131	131	131	131
	Sodium	mg/L		1	24/5/12	1/6/12	770	770	770	770
	Standing Water Level	m		1	24/5/12	1/6/12	0.68	0.68	0.68	0.68
	Sulphate	mg/L		1	24/5/12	1/6/12	735	735	735	735
pH	pH	1	24/5/12	1/6/12	7.66	7.66	7.66	7.66		



**WHITEHAVEN CHPP – MONTHLY MONITORING SUMMARY**

10	Ammonia	mg/L	Quarterly	1	24/5/12	1/6/12	0.07	0.07	0.07	0.07
	Bicarbonate	mg/L		1	24/5/12	1/6/12	698	698	698	698
	Calcium	mg/L		1	24/5/12	1/6/12	189	189	189	189
	Chloride	mg/L		1	24/5/12	1/6/12	1430	1430	1430	1430
	Conductivity	µs/cm		1	24/5/12	1/6/12	5800	5800	5800	5800
	Lead	mg/L		1	24/5/12	1/6/12	0.004	0.004	0.004	0.004
	Magnesium	mg/L		1	24/5/12	1/6/12	221	221	221	221
	Nitrate	mg/L		1	24/5/12	1/6/12	12.3	12.3	12.3	12.3
	Potassium	mg/L		1	24/5/12	1/6/12	66	66	66	66
	Sodium	mg/L		1	24/5/12	1/6/12	744	744	744	744
	Standing Water Level	m		1	24/5/12	1/6/12	0.43	0.43	0.43	0.43
	Sulphate	mg/L		1	24/5/12	1/6/12	252	252	252	252
	pH	pH		1	24/5/12	1/6/12	7.69	7.69	7.69	7.69

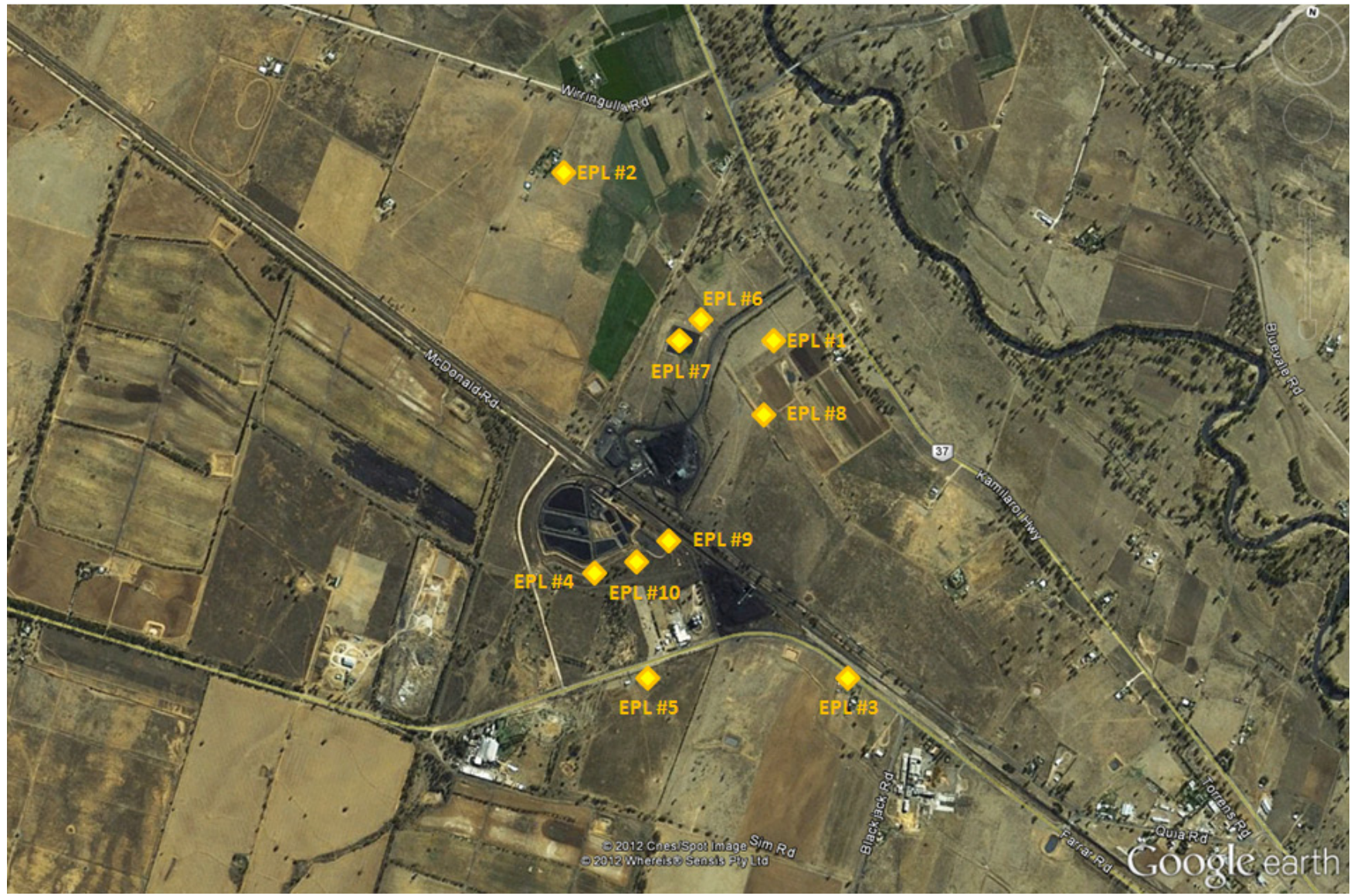
**Table 3 – Monitoring (Quarterly Noise – Limits Apply)**

EPL ID	Date	Start Time	Measurement Period	Measured levels – All sources – dB(A)		Limit(s)	Weather	Observations	(Potential) Non-compliance /breach
				L <sub>A1, 1</sub> Minute	L <sub>Aeq, 15</sub> Minute				
N1	-	-	-		-	Day - 38	-	No monitoring this month	-
	-	-	-		-	Evening - 37	-	No monitoring this month	-
	-	-	-		-	Night - 35	-	No monitoring this month	-
	-	-	-	-		Night - 45	-	No monitoring this month	-



**WHITEHAVEN CHPP – MONTHLY MONITORING SUMMARY**

Figure 1 – EPL 3637 Monitoring Locations







## WHITEHAVEN CHPP – MONTHLY MONITORING SUMMARY

### Site Information

EPL No: 3637

EPA Website Link: <http://www.environment.nsw.gov.au/prpoeoapp/ViewPOEOLicence.aspx?DOCID=29173&SYSUID=1&LICID=3637>

Licensee: Whitehaven Coal Mining Limited

Licensee Address: Boggabri Road, Gunnedah NSW 2380

EPL Monitoring Points: See Figure 1 below

Sampling Period: June 2012

Publication Date: 24<sup>th</sup> July 2012 (re-published 16<sup>th</sup> August 2012)

**Table 1 - No Pollutant Limits Apply**

EPL ID	Pollutant	Units of Measure	Monitoring Frequency	No. of Measurements for the Month	Date Sampled	Date Obtained	Min Value	Mean Value	Median Value	Max or Only Value
1	Solid Particles	g/m <sup>2</sup> /month	Continuous	1	19/6/12	29/6/12	-	-	-	8.5
2	Solid Particles	g/m <sup>2</sup> /month	Continuous	1	19/6/12	29/6/12	-	-	-	1.9
3	Solid Particles	g/m <sup>2</sup> /month	Continuous	1	19/6/12	29/6/12	-	-	-	1.1
4	Solid Particles	g/m <sup>2</sup> /month	Continuous	1	19/6/12	29/6/12	-	-	-	0.9
5	Solid Particles	g/m <sup>2</sup> /month	Continuous	1	19/6/12	29/6/12	-	-	-	1.2
	PM <sub>10</sub>	µg/m <sup>3</sup>	Every 6 days	5	Various	10/7/12	6.0	8.1	7.6	12.6
6	Conductivity	ms/cm	Each overflow event	0	-	-	-	-	-	-
	Oil and Grease	mg/L		0	-	-	-	-	-	-
	Total Organic Carbon	mg/L		0	-	-	-	-	-	-
	Total Suspended Solids	mg/L		0	-	-	-	-	-	-
	pH	pH		0	-	-	-	-	-	-
7	Conductivity	ms/cm	Quarterly	0	-	-	-	-	-	-
	Oil and Grease	mg/L		0	-	-	-	-	-	-
	Total Organic Carbon	mg/L		0	-	-	-	-	-	-
	Total Suspended Solids	mg/L		0	-	-	-	-	-	-
	pH	pH		0	-	-	-	-	-	-



**WHITEHAVEN CHPP – MONTHLY MONITORING SUMMARY**

**Table 2 – Monitoring (Quarterly – No Limits apply)**

EPL ID	Pollutant	Units of Measure	Monitoring Frequency	No. of Samples for the Period	Date Sampled	Date Obtained	Min Value	Mean Value	Median Value	Max Value
8	Ammonia	mg/L	Quarterly	0	-	-	-	-	-	-
	Bicarbonate	mg/L		0	-	-	-	-	-	-
	Calcium	mg/L		0	-	-	-	-	-	-
	Chloride	mg/L		0	-	-	-	-	-	-
	Conductivity	µs/cm		0	-	-	-	-	-	-
	Lead	mg/L		0	-	-	-	-	-	-
	Magnesium	mg/L		0	-	-	-	-	-	-
	Nitrate	mg/L		0	-	-	-	-	-	-
	Potassium	mg/L		0	-	-	-	-	-	-
	Sodium	mg/L		0	-	-	-	-	-	-
	Standing Water Level	m		0	-	-	-	-	-	-
	Sulphate	mg/L		0	-	-	-	-	-	-
	pH	pH		0	-	-	-	-	-	-
9	Ammonia	mg/L	Quarterly	0	-	-	-	-	-	-
	Bicarbonate	mg/L		0	-	-	-	-	-	-
	Calcium	mg/L		0	-	-	-	-	-	-
	Chloride	mg/L		0	-	-	-	-	-	-
	Conductivity	µs/cm		0	-	-	-	-	-	-
	Lead	mg/L		0	-	-	-	-	-	-
	Magnesium	mg/L		0	-	-	-	-	-	-
	Nitrate	mg/L		0	-	-	-	-	-	-
	Potassium	mg/L		0	-	-	-	-	-	-
	Sodium	mg/L		0	-	-	-	-	-	-
	Standing Water Level	m		0	-	-	-	-	-	-
	Sulphate	mg/L		0	-	-	-	-	-	-
	pH	pH		0	-	-	-	-	-	-



**WHITEHAVEN CHPP – MONTHLY MONITORING SUMMARY**

10	Ammonia	mg/L	Quarterly	0	-	-	-	-	-	-	
	Bicarbonate	mg/L		0	-	-	-	-	-	-	-
	Calcium	mg/L		0	-	-	-	-	-	-	-
	Chloride	mg/L		0	-	-	-	-	-	-	-
	Conductivity	µs/cm		1	-	-	-	-	-	-	-
	Lead	mg/L		0	-	-	-	-	-	-	-
	Magnesium	mg/L		0	-	-	-	-	-	-	-
	Nitrate	mg/L		0	-	-	-	-	-	-	-
	Potassium	mg/L		0	-	-	-	-	-	-	-
	Sodium	mg/L		0	-	-	-	-	-	-	-
	Standing Water Level	m		0	-	-	-	-	-	-	-
	Sulphate	mg/L		0	-	-	-	-	-	-	-
	pH	pH		0	-	-	-	-	-	-	-

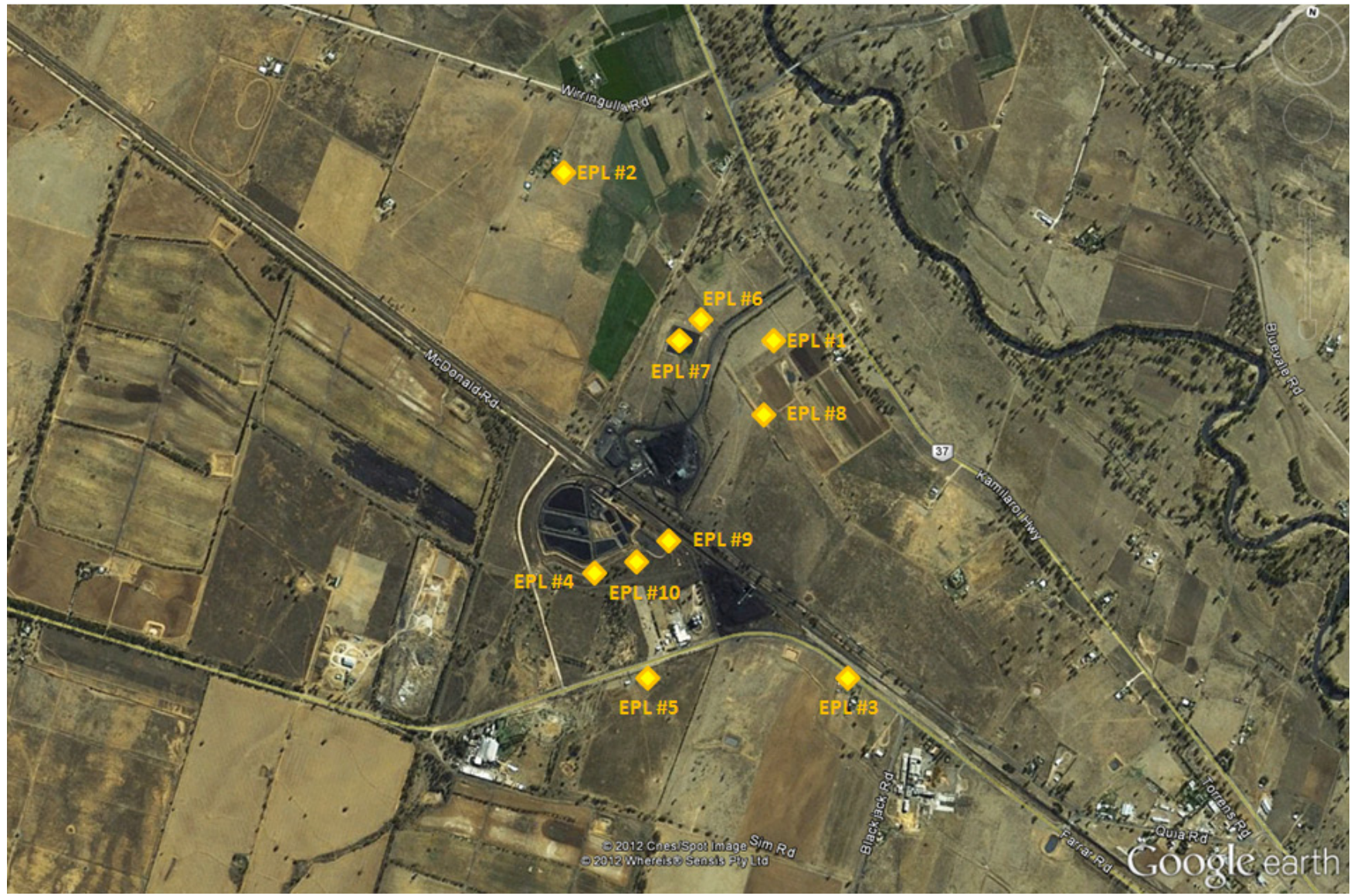
**Table 3 – Monitoring (Quarterly Noise – Limits Apply)**

EPL ID	Date	Start Time	Measurement Period	Measured levels – All sources – dB(A)		Limit(s)	Weather	Observations	(Potential) Non-compliance /breach
				L <sub>A1, 1</sub> Minute	L <sub>Aeq, 15</sub> Minute				
N1	-	-	-		-	Day - 38	-	No monitoring this month	-
	-	-	-		-	Evening - 37	-	No monitoring this month	-
	-	-	-		-	Night - 35	-	No monitoring this month	-
	-	-	-	-		Night - 45	-	No monitoring this month	-



**WHITEHAVEN CHPP – MONTHLY MONITORING SUMMARY**

Figure 1 – EPL 3637 Monitoring Locations





## WHITEHAVEN CHPP – MONTHLY MONITORING SUMMARY

### Site Information

EPL No: 3637

EPA Website Link: <http://www.environment.nsw.gov.au/prpoeoapp/ViewPOEOLicence.aspx?DOCID=29173&SYSUID=1&LICID=3637>

Licensee: Whitehaven Coal Mining Limited

Licensee Address: Boggabri Road, Gunnedah NSW 2380

EPL Monitoring Points: See Figure 1 below

Sampling Period: July 2012

Publication Date: 16<sup>th</sup> August 2012

**Table 1 - No Pollutant Limits Apply**

EPL ID	Pollutant	Units of Measure	Monitoring Frequency	No. of Measurements for the Month	Date Sampled	Date Obtained	Min Value	Mean Value	Median Value	Max or Only Value
1	Solid Particles	g/m <sup>2</sup> /month	Continuous	1	20/7/12	27/7/12	-	-	-	2.9
2	Solid Particles	g/m <sup>2</sup> /month	Continuous	1	20/7/12	27/7/12	-	-	-	0.9
3	Solid Particles	g/m <sup>2</sup> /month	Continuous	1	20/7/12	27/7/12	-	-	-	1.0
4	Solid Particles	g/m <sup>2</sup> /month	Continuous	1	20/7/12	27/7/12	-	-	-	0.6
5	Solid Particles	g/m <sup>2</sup> /month	Continuous	1	20/7/12	27/7/12	-	-	-	19.1
	PM <sub>10</sub>	µg/m <sup>3</sup>	Every 6 days	6	Various	14/8/12	6.3	9.63	9.6	14.1
6	Conductivity	ms/cm	Each overflow event	0	-	-	-	-	-	-
	Oil and Grease	mg/L		0	-	-	-	-	-	-
	Total Organic Carbon	mg/L		0	-	-	-	-	-	-
	Total Suspended Solids	mg/L		0	-	-	-	-	-	-
	pH	pH		0	-	-	-	-	-	-
7	Conductivity	ms/cm	Quarterly	0	-	-	-	-	-	-
	Oil and Grease	mg/L		0	-	-	-	-	-	-
	Total Organic Carbon	mg/L		0	-	-	-	-	-	-
	Total Suspended Solids	mg/L		0	-	-	-	-	-	-
	pH	pH		0	-	-	-	-	-	-



**WHITEHAVEN CHPP – MONTHLY MONITORING SUMMARY**

Table 2 – Monitoring (Quarterly – No Limits apply)

EPL ID	Pollutant	Units of Measure	Monitoring Frequency	No. of Samples for the Period	Date Sampled	Date Obtained	Min Value	Mean Value	Median Value	Max Value
8	Ammonia	mg/L	Quarterly	0	-	-	-	-	-	-
	Bicarbonate	mg/L		0	-	-	-	-	-	-
	Calcium	mg/L		0	-	-	-	-	-	-
	Chloride	mg/L		0	-	-	-	-	-	-
	Conductivity	µs/cm		0	-	-	-	-	-	-
	Lead	mg/L		0	-	-	-	-	-	-
	Magnesium	mg/L		0	-	-	-	-	-	-
	Nitrate	mg/L		0	-	-	-	-	-	-
	Potassium	mg/L		0	-	-	-	-	-	-
	Sodium	mg/L		0	-	-	-	-	-	-
	Standing Water Level	m		0	-	-	-	-	-	-
	Sulphate	mg/L		0	-	-	-	-	-	-
	pH	pH		0	-	-	-	-	-	-
9	Ammonia	mg/L	Quarterly	0	-	-	-	-	-	-
	Bicarbonate	mg/L		0	-	-	-	-	-	-
	Calcium	mg/L		0	-	-	-	-	-	-
	Chloride	mg/L		0	-	-	-	-	-	-
	Conductivity	µs/cm		0	-	-	-	-	-	-
	Lead	mg/L		0	-	-	-	-	-	-
	Magnesium	mg/L		0	-	-	-	-	-	-
	Nitrate	mg/L		0	-	-	-	-	-	-
	Potassium	mg/L		0	-	-	-	-	-	-
	Sodium	mg/L		0	-	-	-	-	-	-
	Standing Water Level	m		0	-	-	-	-	-	-
	Sulphate	mg/L		0	-	-	-	-	-	-
	pH	pH		0	-	-	-	-	-	-



**WHITEHAVEN CHPP – MONTHLY MONITORING SUMMARY**

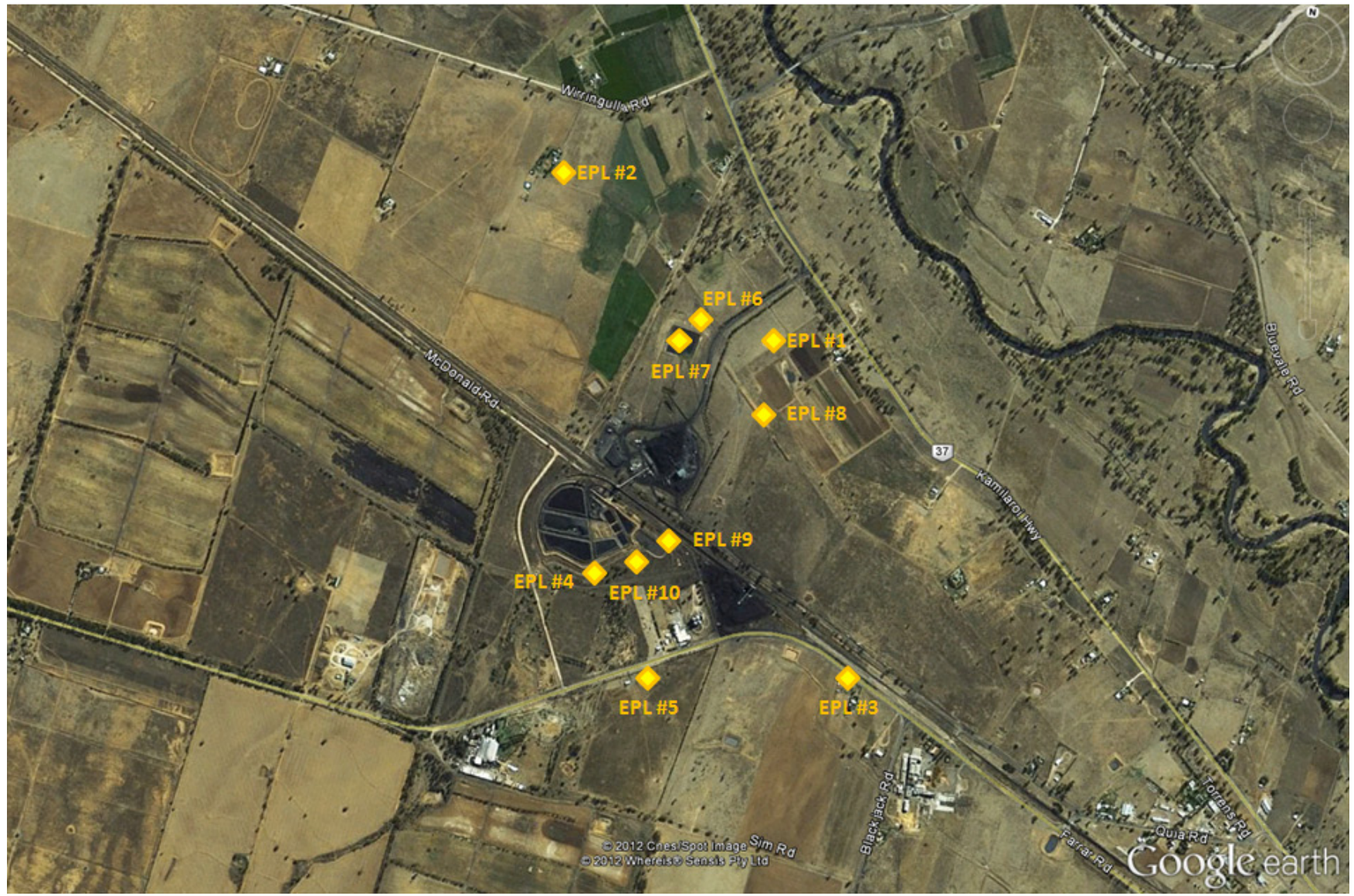
10	Ammonia	mg/L	Quarterly	0	-	-	-	-	-	-	
	Bicarbonate	mg/L		0	-	-	-	-	-	-	-
	Calcium	mg/L		0	-	-	-	-	-	-	-
	Chloride	mg/L		0	-	-	-	-	-	-	-
	Conductivity	µs/cm		0	-	-	-	-	-	-	-
	Lead	mg/L		0	-	-	-	-	-	-	-
	Magnesium	mg/L		0	-	-	-	-	-	-	-
	Nitrate	mg/L		0	-	-	-	-	-	-	-
	Potassium	mg/L		0	-	-	-	-	-	-	-
	Sodium	mg/L		0	-	-	-	-	-	-	-
	Standing Water Level	m		0	-	-	-	-	-	-	-
	Sulphate	mg/L		0	-	-	-	-	-	-	-
	pH	pH		0	-	-	-	-	-	-	-

**Table 3 – Monitoring (Quarterly Noise – Limits Apply)**

EPL ID	Date	Start Time	Measurement Period	Measured levels – All sources – dB(A)		Limit(s)	Weather	Observations	(Potential) Non-compliance /breach
				L <sub>A1, 1</sub> Minute	L <sub>Aeq, 15</sub> Minute				
N1	-	-	-		-	Day - 38	-	No monitoring this month	-
	-	-	-		-	Evening - 37	-	No monitoring this month	-
	-	-	-		-	Night - 35	-	No monitoring this month	-
	-	-	-	-		Night - 45	-	No monitoring this month	-

**WHITEHAVEN CHPP – MONTHLY MONITORING SUMMARY**

Figure 1 – EPL 3637 Monitoring Locations



**WHITEHAVEN CHPP – MONTHLY MONITORING SUMMARY**
**Site Information**

EPL No: 3637

 EPA Website Link: <http://www.environment.nsw.gov.au/prpoeoapp/ViewPOEOLicence.aspx?DOCID=29173&SYSUID=1&LICID=3637>

Licensee: Whitehaven Coal Mining Limited

Licensee Address: Boggabri Road, Gunnedah NSW 2380

EPL Monitoring Points: See Figure 1 below

Sampling Period: August 2012

 Publication Date: 14<sup>th</sup> September 2012

**Table 1 - No Pollutant Limits Apply**

EPL ID	Pollutant	Units of Measure	Monitoring Frequency	No. of Measurements for the Month	Date Sampled	Date Obtained	Min Value	Mean Value	Median Value	Max or Only Value
1	Solid Particles	g/m <sup>2</sup> /month	Continuous	1	20/8/12	27/8/12	-	-	-	2.7
2	Solid Particles	g/m <sup>2</sup> /month	Continuous	1	20/8/12	27/8/12	-	-	-	0.8
3	Solid Particles	g/m <sup>2</sup> /month	Continuous	1	20/8/12	27/8/12	-	-	-	1.0
4	Solid Particles	g/m <sup>2</sup> /month	Continuous	1	20/8/12	27/8/12	-	-	-	0.7
5	Solid Particles	g/m <sup>2</sup> /month	Continuous	1	20/8/12	27/8/12	-	-	-	43.3
	PM <sub>10</sub>	µg/m <sup>3</sup>	Every 6 days	5	Various	13/9/12	8.9	13.98	12.7	22.1
6	Conductivity	ms/cm	Each overflow event	0	-	-	-	-	-	-
	Oil and Grease	mg/L		0	-	-	-	-	-	-
	Total Organic Carbon	mg/L		0	-	-	-	-	-	-
	Total Suspended Solids	mg/L		0	-	-	-	-	-	-
	pH	pH		0	-	-	-	-	-	-
7	Conductivity	ms/cm	Quarterly	1	1/8/12	7/8/12	-	-	-	1560
	Oil and Grease	mg/L		1	1/8/12	7/8/12	-	-	-	<5
	Total Organic Carbon	mg/L		1	1/8/12	7/8/12	-	-	-	6
	Total Suspended Solids	mg/L		1	1/8/12	7/8/12	-	-	-	24
	pH	pH		1	1/8/12	7/8/12	-	-	-	8.28





**WHITEHAVEN CHPP – MONTHLY MONITORING SUMMARY**

Table 2 – Monitoring (Quarterly – No Limits apply)

EPL ID	Pollutant	Units of Measure	Monitoring Frequency	No. of Samples for the Period	Date Sampled	Date Obtained	Min Value	Mean Value	Median Value	Max Value
8	Ammonia	mg/L	Quarterly	0	-	-	-	-	-	-
	Bicarbonate	mg/L		0	-	-	-	-	-	-
	Calcium	mg/L		0	-	-	-	-	-	-
	Chloride	mg/L		0	-	-	-	-	-	-
	Conductivity	µs/cm		0	-	-	-	-	-	-
	Lead	mg/L		0	-	-	-	-	-	-
	Magnesium	mg/L		0	-	-	-	-	-	-
	Nitrate	mg/L		0	-	-	-	-	-	-
	Potassium	mg/L		0	-	-	-	-	-	-
	Sodium	mg/L		0	-	-	-	-	-	-
	Standing Water Level	m		0	-	-	-	-	-	-
	Sulphate	mg/L		0	-	-	-	-	-	-
	pH	pH		0	-	-	-	-	-	-
9	Ammonia	mg/L	Quarterly	0	-	-	-	-	-	-
	Bicarbonate	mg/L		0	-	-	-	-	-	-
	Calcium	mg/L		0	-	-	-	-	-	-
	Chloride	mg/L		0	-	-	-	-	-	-
	Conductivity	µs/cm		0	-	-	-	-	-	-
	Lead	mg/L		0	-	-	-	-	-	-
	Magnesium	mg/L		0	-	-	-	-	-	-
	Nitrate	mg/L		0	-	-	-	-	-	-
	Potassium	mg/L		0	-	-	-	-	-	-
	Sodium	mg/L		0	-	-	-	-	-	-
	Standing Water Level	m		0	-	-	-	-	-	-
	Sulphate	mg/L		0	-	-	-	-	-	-
	pH	pH		0	-	-	-	-	-	-



## WHITEHAVEN CHPP – MONTHLY MONITORING SUMMARY

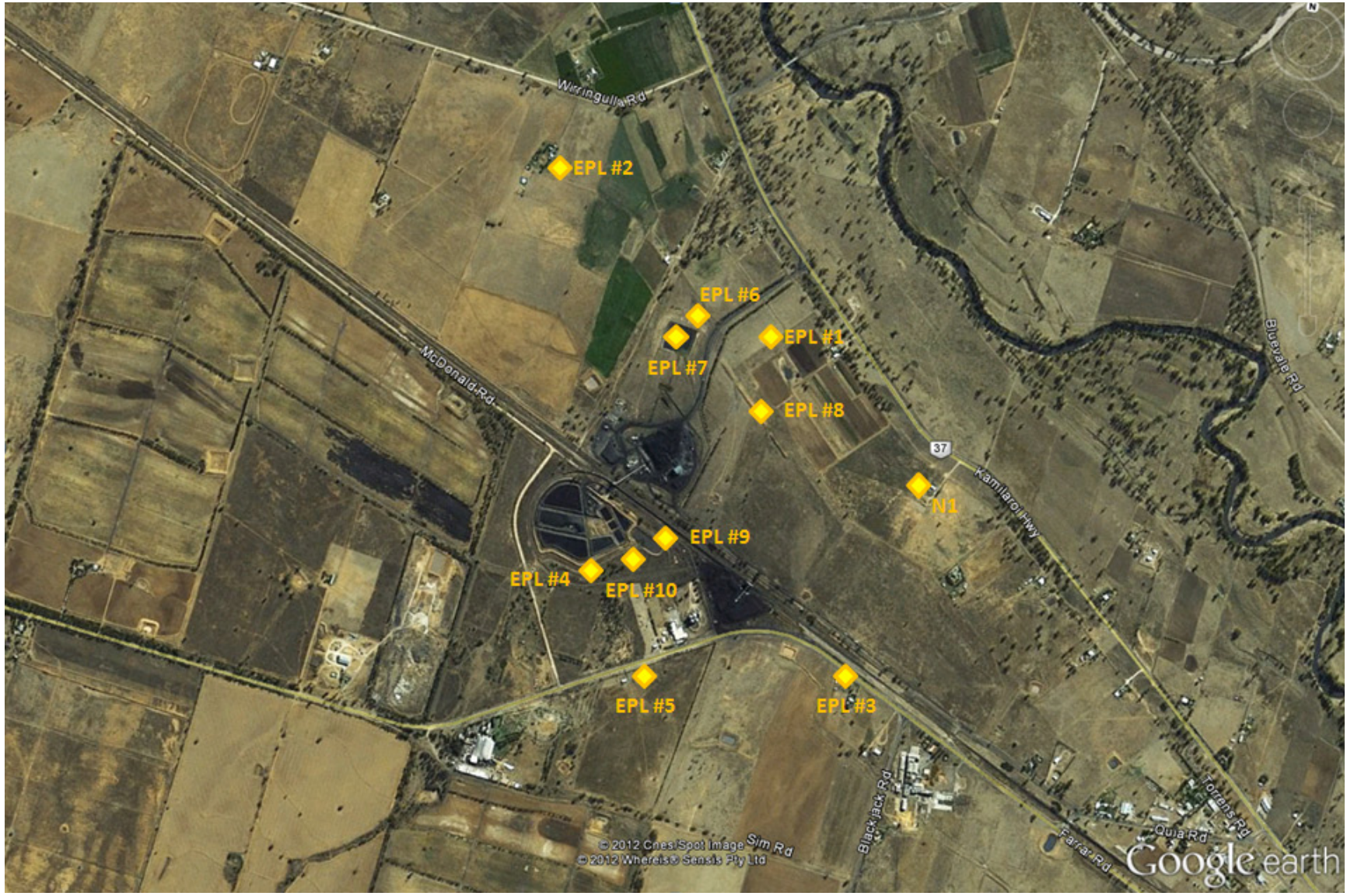
10	Ammonia	mg/L	Quarterly	0	-	-	-	-	-	-	
	Bicarbonate	mg/L		0	-	-	-	-	-	-	-
	Calcium	mg/L		0	-	-	-	-	-	-	-
	Chloride	mg/L		0	-	-	-	-	-	-	-
	Conductivity	µs/cm		0	-	-	-	-	-	-	-
	Lead	mg/L		0	-	-	-	-	-	-	-
	Magnesium	mg/L		0	-	-	-	-	-	-	-
	Nitrate	mg/L		0	-	-	-	-	-	-	-
	Potassium	mg/L		0	-	-	-	-	-	-	-
	Sodium	mg/L		0	-	-	-	-	-	-	-
	Standing Water Level	m		0	-	-	-	-	-	-	-
	Sulphate	mg/L		0	-	-	-	-	-	-	-
	pH	pH		0	-	-	-	-	-	-	-

Table 3 – Monitoring (Quarterly Noise – Limits Apply)

EPL ID	Date	Start Time	Measurement Period	Measured levels – All sources – dB(A)		Limit(s)	Weather	Observations	(Potential) Non-compliance /breach
				L <sub>A1, 1</sub> Minute	L <sub>Aeq, 15</sub> Minute				
N1	7/8/12	4:34pm	15 minutes		50	Day - 38	0.5m/s NNW	Traffic (50), birds (46), CHPP (36)	No
	7/8/12	9:41pm	15 minutes		51	Evening - 37	Calm	Traffic (49), insects (47), CHPP (45)	Yes
	7/8/12	11:58pm	15 minutes		47	Night - 35	Calm	Traffic (47), CHPP (43)	Yes
	7/8/12	11:58pm	15 minutes	47		Night - 45	Calm	CHPP (44)	No

**WHITEHAVEN CHPP – MONTHLY MONITORING SUMMARY**

Figure 1 – EPL 3637 Monitoring Locations



**WHITEHAVEN CHPP – MONTHLY MONITORING SUMMARY**
**Site Information**

EPL No: 3637

EPA Website Link: <http://www.environment.nsw.gov.au/prpoeoapp/ViewPOEOLicence.aspx?DOCID=29173&SYSUID=1&LICID=3637>

Licensee: Whitehaven Coal Mining Limited

Licensee Address: Boggabri Road, Gunnedah NSW 2380

EPL Monitoring Points: See Figure 1 below

Sampling Period: September 2012

Publication Date: 23<sup>rd</sup> October 2012

**Table 1 - No Pollutant Limits Apply**

EPL ID	Pollutant	Units of Measure	Monitoring Frequency	No. of Measurements for the Month	Date Sampled	Date Obtained	Min Value	Mean Value	Median Value	Max or Only Value
1	Solid Particles	g/m <sup>2</sup> /month	Continuous	1	19/9/12	2/10/12	-	-	-	2.4
2	Solid Particles	g/m <sup>2</sup> /month	Continuous	1	19/9/12	2/10/12	-	-	-	0.6
3	Solid Particles	g/m <sup>2</sup> /month	Continuous	1	19/9/12	2/10/12	-	-	-	1.3
4	Solid Particles	g/m <sup>2</sup> /month	Continuous	1	19/9/12	2/10/12	-	-	-	1.2
5	Solid Particles	g/m <sup>2</sup> /month	Continuous	1	19/9/12	2/10/12	-	-	-	NR*
	PM <sub>10</sub>	µg/m <sup>3</sup>	Every 6 days	5	Various	16/10/12	8.8	24.26	28.1	37.7
6	Conductivity	ms/cm	Each overflow event	0	-	-	-	-	-	-
	Oil and Grease	mg/L		0	-	-	-	-	-	-
	Total Organic Carbon	mg/L		0	-	-	-	-	-	-
	Total Suspended Solids	mg/L		0	-	-	-	-	-	-
	pH	pH		0	-	-	-	-	-	-
7	Conductivity	ms/cm	Quarterly	0	-	-	-	-	-	-
	Oil and Grease	mg/L		0	-	-	-	-	-	-
	Total Organic Carbon	mg/L		0	-	-	-	-	-	-
	Total Suspended Solids	mg/L		0	-	-	-	-	-	-
	pH	pH		0	-	-	-	-	-	-

\* Laboratory unable to analyse due to excessive contamination (bird droppings). EPA notified.





**WHITEHAVEN CHPP – MONTHLY MONITORING SUMMARY**

**Table 2 – Monitoring (Quarterly – No Limits apply)**

EPL ID	Pollutant	Units of Measure	Monitoring Frequency	No. of Samples for the Period	Date Sampled	Date Obtained	Min Value	Mean Value	Median Value	Max or Only Value
8	Ammonia	mg/L	Quarterly	1	19/9/12	27/9/12	-	-	-	<0.01
	Bicarbonate	mg/L		1	19/9/12	27/9/12	-	-	-	1300
	Calcium	mg/L		1	19/9/12	27/9/12	-	-	-	27
	Chloride	mg/L		1	19/9/12	27/9/12	-	-	-	1350
	Conductivity	µs/cm		1	19/9/12	27/9/12	-	-	-	7020
	Lead	mg/L		1	19/9/12	27/9/12	-	-	-	0.005
	Magnesium	mg/L		1	19/9/12	27/9/12	-	-	-	97
	Nitrate	mg/L		1	19/9/12	27/9/12	-	-	-	0.23
	Potassium	mg/L		1	19/9/12	27/9/12	-	-	-	20
	Sodium	mg/L		1	19/9/12	27/9/12	-	-	-	1450
	Standing Water Level	m		1	19/9/12	27/9/12	-	-	-	6.04
	Sulphate	mg/L		1	19/9/12	27/9/12	-	-	-	613
pH	pH	1	19/9/12	27/9/12	-	-	-	7.82		
9	Ammonia	mg/L	Quarterly	1	19/9/12	27/9/12	-	-	-	<0.01
	Bicarbonate	mg/L		1	19/9/12	27/9/12	-	-	-	837
	Calcium	mg/L		1	19/9/12	27/9/12	-	-	-	259
	Chloride	mg/L		1	19/9/12	27/9/12	-	-	-	1330
	Conductivity	µs/cm		1	19/9/12	27/9/12	-	-	-	6180
	Lead	mg/L		1	19/9/12	27/9/12	-	-	-	0.007
	Magnesium	mg/L		1	19/9/12	27/9/12	-	-	-	232
	Nitrate	mg/L		1	19/9/12	27/9/12	-	-	-	0.03
	Potassium	mg/L		1	19/9/12	27/9/12	-	-	-	115
	Sodium	mg/L		1	19/9/12	27/9/12	-	-	-	719
	Standing Water Level	m		1	19/9/12	27/9/12	-	-	-	1.38
	Sulphate	mg/L		1	19/9/12	27/9/12	-	-	-	772
pH	pH	1	19/9/12	27/9/12	-	-	-	7.13		



**WHITEHAVEN CHPP – MONTHLY MONITORING SUMMARY**

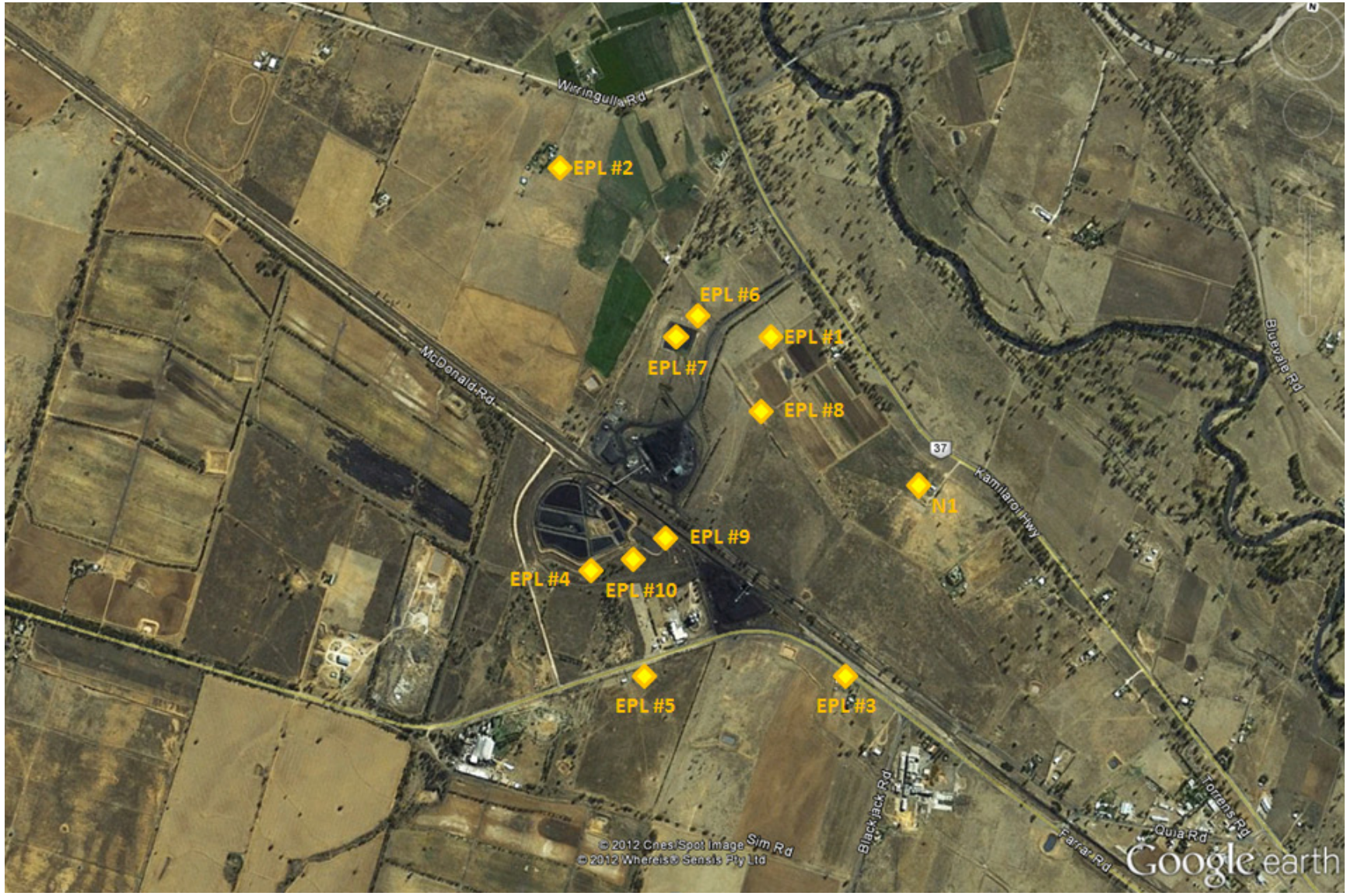
10	Ammonia	mg/L	Quarterly	1	19/9/12	27/9/12	-	-	-	<0.01
	Bicarbonate	mg/L		1	19/9/12	27/9/12	-	-	-	696
	Calcium	mg/L		1	19/9/12	27/9/12	-	-	-	203
	Chloride	mg/L		1	19/9/12	27/9/12	-	-	-	1610
	Conductivity	µs/cm		1	19/9/12	27/9/12	-	-	-	6010
	Lead	mg/L		1	19/9/12	27/9/12	-	-	-	0.005
	Magnesium	mg/L		1	19/9/12	27/9/12	-	-	-	209
	Nitrate	mg/L		1	19/9/12	27/9/12	-	-	-	12.8
	Potassium	mg/L		1	19/9/12	27/9/12	-	-	-	61
	Sodium	mg/L		1	19/9/12	27/9/12	-	-	-	741
	Standing Water Level	m		1	19/9/12	27/9/12	-	-	-	0.8
	Sulphate	mg/L		1	19/9/12	27/9/12	-	-	-	269
	pH	pH		1	19/9/12	27/9/12	-	-	-	7.52

**Table 3 – Monitoring (Quarterly Noise – Limits Apply)**

EPL ID	Date	Start Time	Measurement Period	Measured levels – All sources – dB(A)		Limit(s)	Weather	Observations	(Potential) Non-compliance /breach
				L <sub>A1, 1</sub> Minute	L <sub>Aeq, 15</sub> Minute				
N1	-	-	-		-	Day - 38	-	No monitoring this month	-
	-	-	-		-	Evening - 37	-	No monitoring this month	-
	-	-	-		-	Night - 35	-	No monitoring this month	-
	-	-	-	-		Night - 45	-	No monitoring this month	-

**WHITEHAVEN CHPP – MONTHLY MONITORING SUMMARY**

Figure 1 – EPL 3637 Monitoring Locations







## WHITEHAVEN CHPP – MONTHLY MONITORING SUMMARY

### Site Information

EPL No: 3637

EPA Website Link: <http://www.environment.nsw.gov.au/prpoeoapp/ViewPOEOLicence.aspx?DOCID=29173&SYSUID=1&LICID=3637>

Licensee: Whitehaven Coal Mining Limited

Licensee Address: Boggabri Road, Gunnedah NSW 2380

EPL Monitoring Points: See Figure 1 below

Sampling Period: October 2012

Publication Date: 21<sup>st</sup> November 2012

Table 1 - No Pollutant Limits Apply

EPL ID	Pollutant	Units of Measure	Monitoring Frequency	No. of Measurements for the Month	Date Sampled	Date Obtained	Min Value	Mean Value	Median Value	Max or Only Value
1	Solid Particles	g/m <sup>2</sup> /month	Continuous	1	19/10/12	31/10/12	-	-	-	2.2
2	Solid Particles	g/m <sup>2</sup> /month	Continuous	1	19/10/12	31/10/12	-	-	-	0.5
3	Solid Particles	g/m <sup>2</sup> /month	Continuous	1	19/10/12	31/10/12	-	-	-	0.7
4	Solid Particles	g/m <sup>2</sup> /month	Continuous	1	19/10/12	31/10/12	-	-	-	4.1
5	Solid Particles	g/m <sup>2</sup> /month	Continuous	1	19/10/12	31/10/12	-	-	-	7.2
	PM <sub>10</sub>	µg/m <sup>3</sup>	Every 6 days	5	Various	12/11/12	10.0	22.76	24.9	38.4
6	Conductivity	ms/cm	Each overflow event	0	-	-	-	-	-	-
	Oil and Grease	mg/L		0	-	-	-	-	-	-
	Total Organic Carbon	mg/L		0	-	-	-	-	-	-
	Total Suspended Solids	mg/L		0	-	-	-	-	-	-
	pH	pH		0	-	-	-	-	-	-
7	Conductivity	ms/cm	Quarterly	0	-	-	-	-	-	-
	Oil and Grease	mg/L		0	-	-	-	-	-	-
	Total Organic Carbon	mg/L		0	-	-	-	-	-	-
	Total Suspended Solids	mg/L		0	-	-	-	-	-	-
	pH	pH		0	-	-	-	-	-	-





**WHITEHAVEN CHPP – MONTHLY MONITORING SUMMARY**

Table 2 – Monitoring (Quarterly – No Limits apply)

EPL ID	Pollutant	Units of Measure	Monitoring Frequency	No. of Samples for the Period	Date Sampled	Date Obtained	Min Value	Mean Value	Median Value	Max or Only Value
8	Ammonia	mg/L	Quarterly	0	-	-	-	-	-	-
	Bicarbonate	mg/L		0	-	-	-	-	-	-
	Calcium	mg/L		0	-	-	-	-	-	-
	Chloride	mg/L		0	-	-	-	-	-	-
	Conductivity	µs/cm		0	-	-	-	-	-	-
	Lead	mg/L		0	-	-	-	-	-	-
	Magnesium	mg/L		0	-	-	-	-	-	-
	Nitrate	mg/L		0	-	-	-	-	-	-
	Potassium	mg/L		0	-	-	-	-	-	-
	Sodium	mg/L		0	-	-	-	-	-	-
	Standing Water Level	m		0	-	-	-	-	-	-
	Sulphate	mg/L		0	-	-	-	-	-	-
pH	pH	0	-	-	-	-	-	-	-	
9	Ammonia	mg/L	Quarterly	0	-	-	-	-	-	-
	Bicarbonate	mg/L		0	-	-	-	-	-	-
	Calcium	mg/L		0	-	-	-	-	-	-
	Chloride	mg/L		0	-	-	-	-	-	-
	Conductivity	µs/cm		0	-	-	-	-	-	-
	Lead	mg/L		0	-	-	-	-	-	-
	Magnesium	mg/L		0	-	-	-	-	-	-
	Nitrate	mg/L		0	-	-	-	-	-	-
	Potassium	mg/L		0	-	-	-	-	-	-
	Sodium	mg/L		0	-	-	-	-	-	-
	Standing Water Level	m		0	-	-	-	-	-	-
	Sulphate	mg/L		0	-	-	-	-	-	-
pH	pH	0	-	-	-	-	-	-	-	
10	Ammonia	mg/L	Quarterly	0	-	-	-	-	-	-



**WHITEHAVEN CHPP – MONTHLY MONITORING SUMMARY**

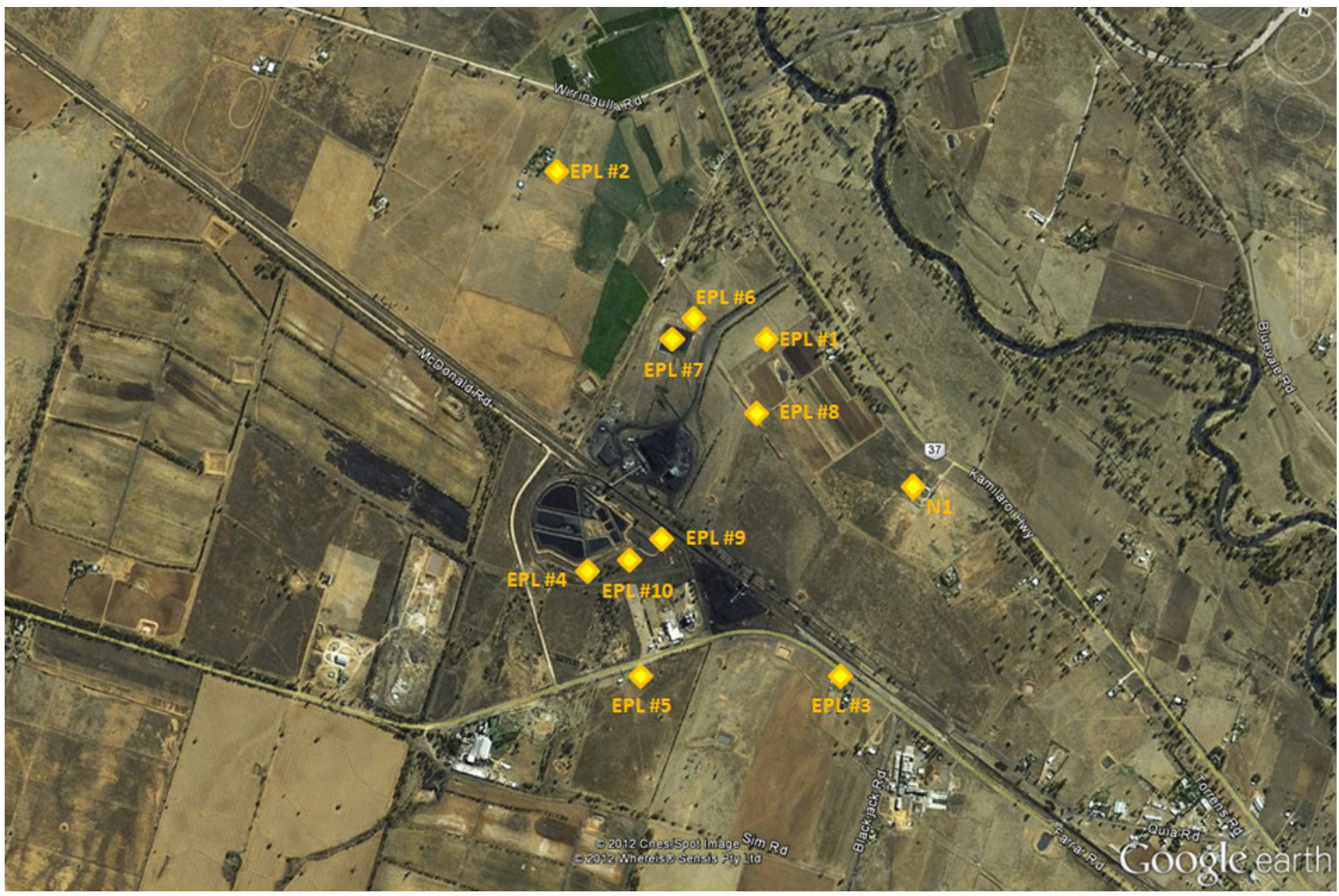
	Bicarbonate	mg/L		0	-	-	-	-	-	-
	Calcium	mg/L		0	-	-	-	-	-	-
	Chloride	mg/L		0	-	-	-	-	-	-
	Conductivity	µs/cm		0	-	-	-	-	-	-
	Lead	mg/L		0	-	-	-	-	-	-
	Magnesium	mg/L		0	-	-	-	-	-	-
	Nitrate	mg/L		0	-	-	-	-	-	-
	Potassium	mg/L		0	-	-	-	-	-	-
	Sodium	mg/L		0	-	-	-	-	-	-
	Standing Water Level	m		0	-	-	-	-	-	-
	Sulphate	mg/L		0	-	-	-	-	-	-
	pH	pH		0	-	-	-	-	-	-

**Table 3 – Monitoring (Quarterly Noise – Limits Apply)**

EPL ID	Date	Start Time	Measurement Period	Measured levels – All sources – dB(A)		Limit(s)	Weather	Observations	(Potential) Non-compliance /breach
				L <sub>A1, 1</sub> Minute	L <sub>Aeq, 15</sub> Minute				
N1	-	-	-		-	Day - 38	-	No monitoring this month	-
	-	-	-		-	Evening - 37	-	No monitoring this month	-
	-	-	-		-	Night - 35	-	No monitoring this month	-
	-	-	-	-		Night - 45	-	No monitoring this month	-

**Figure 1 – EPL 3637 Monitoring Locations**

**WHITEHAVEN CHPP – MONTHLY MONITORING SUMMARY**



**WHITEHAVEN CHPP – MONTHLY MONITORING SUMMARY**
**Site Information**

EPL No: 3637

EPA Website Link: <http://www.environment.nsw.gov.au/prpoeoapp/ViewPOEOLicence.aspx?DOCID=29173&SYSUID=1&LICID=3637>

Licensee: Whitehaven Coal Mining Limited

Licensee Address: Boggabri Road, Gunnedah NSW 2380

EPL Monitoring Points: See Figure 1 below

Sampling Period: November 2012

Publication Date: 18<sup>th</sup> December 2012

**Table 1 - No Pollutant Limits Apply**

EPL ID	Pollutant	Units of Measure	Monitoring Frequency	No. of Measurements for the Month	Date Sampled	Date Obtained	Min Value	Mean Value	Median Value	Max or Only Value
1	Solid Particles	g/m <sup>2</sup> /month	Continuous	1	20/11/12	27/11/12	-	-	-	7.9
2	Solid Particles	g/m <sup>2</sup> /month	Continuous	1	20/11/12	27/11/12	-	-	-	0.8
3	Solid Particles	g/m <sup>2</sup> /month	Continuous	1	20/11/12	27/11/12	-	-	-	1.5
4	Solid Particles	g/m <sup>2</sup> /month	Continuous	1	20/11/12	27/11/12	-	-	-	1.5
5	Solid Particles	g/m <sup>2</sup> /month	Continuous	1	20/11/12	27/11/12	-	-	-	8.5
	PM <sub>10</sub>	µg/m <sup>3</sup>	Every 6 days	5	Various	12/12/12	8.2	19.56	19	37.9
6	Conductivity	ms/cm	Each overflow event	0	-	-	-	-	-	-
	Oil and Grease	mg/L		0	-	-	-	-	-	-
	Total Organic Carbon	mg/L		0	-	-	-	-	-	-
	Total Suspended Solids	mg/L		0	-	-	-	-	-	-
	pH	pH		0	-	-	-	-	-	-
7	Conductivity	ms/cm	Quarterly	1	-	-	-	-	-	2230
	Oil and Grease	mg/L		1	-	-	-	-	-	<5
	Total Organic Carbon	mg/L		1	-	-	-	-	-	4
	Total Suspended Solids	mg/L		1	-	-	-	-	-	16
	pH	pH		1	-	-	-	-	-	8.53





## WHITEHAVEN CHPP – MONTHLY MONITORING SUMMARY

Table 2 – Monitoring (Quarterly – No Limits apply)

EPL ID	Pollutant	Units of Measure	Monitoring Frequency	No. of Samples for the Period	Date Sampled	Date Obtained	Min Value	Mean Value	Median Value	Max or Only Value
8	Ammonia	mg/L	Quarterly	1	28/11/12	6/12/12	-	-	-	0.03
	Bicarbonate	mg/L		1	28/11/12	6/12/12	-	-	-	1310
	Calcium	mg/L		1	28/11/12	6/12/12	-	-	-	31
	Chloride	mg/L		1	28/11/12	6/12/12	-	-	-	1210
	Conductivity	µs/cm		1	28/11/12	6/12/12	-	-	-	7330
	Lead	mg/L		1	28/11/12	6/12/12	-	-	-	0.006
	Magnesium	mg/L		1	28/11/12	6/12/12	-	-	-	106
	Nitrate	mg/L		1	28/11/12	6/12/12	-	-	-	0.41
	Potassium	mg/L		1	28/11/12	6/12/12	-	-	-	22
	Sodium	mg/L		1	28/11/12	6/12/12	-	-	-	1480
	Standing Water Level	m		1	28/11/12	6/12/12	-	-	-	6.29
	Sulphate	mg/L		1	28/11/12	6/12/12	-	-	-	611
pH	pH	1	28/11/12	6/12/12	-	-	-	8.32		
9	Ammonia	mg/L	Quarterly	1	28/11/12	6/12/12	-	-	-	<0.01
	Bicarbonate	mg/L		1	28/11/12	6/12/12	-	-	-	796
	Calcium	mg/L		1	28/11/12	6/12/12	-	-	-	261
	Chloride	mg/L		1	28/11/12	6/12/12	-	-	-	1240
	Conductivity	µs/cm		1	28/11/12	6/12/12	-	-	-	6370
	Lead	mg/L		1	28/11/12	6/12/12	-	-	-	0.003
	Magnesium	mg/L		1	28/11/12	6/12/12	-	-	-	245
	Nitrate	mg/L		1	28/11/12	6/12/12	-	-	-	0.24
	Potassium	mg/L		1	28/11/12	6/12/12	-	-	-	117
	Sodium	mg/L		1	28/11/12	6/12/12	-	-	-	748
	Standing Water Level	m		1	28/11/12	6/12/12	-	-	-	1.84
	Sulphate	mg/L		1	28/11/12	6/12/12	-	-	-	634
pH	pH	1	28/11/12	6/12/12	-	-	-	7.54		
10	Ammonia	mg/L	Quarterly	1	28/11/12	6/12/12	-	-	-	0.03



## WHITEHAVEN CHPP – MONTHLY MONITORING SUMMARY

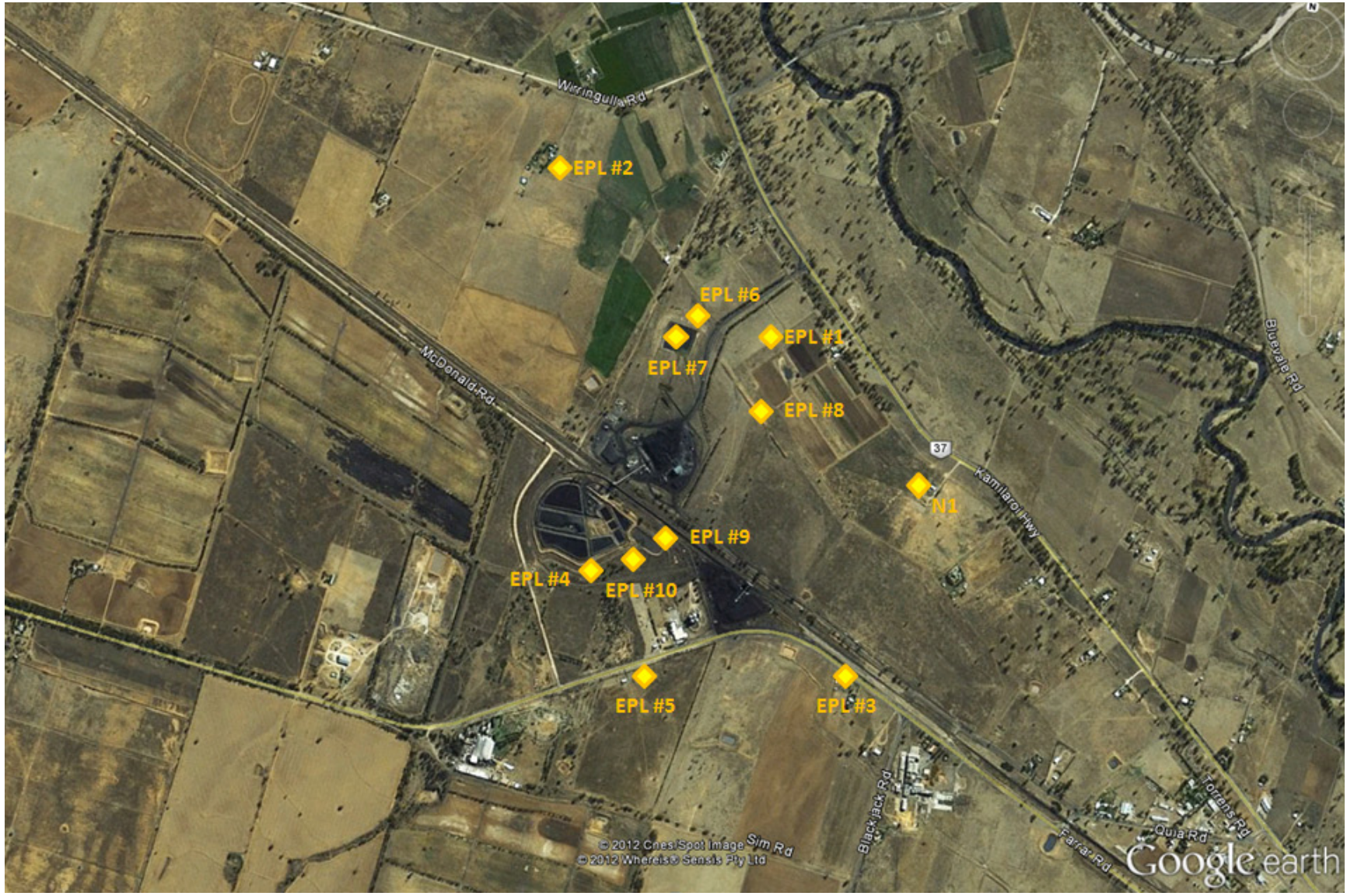
Bicarbonate	mg/L	1	28/11/12	6/12/12	-	-	-	692
Calcium	mg/L	1	28/11/12	6/12/12	-	-	-	212
Chloride	mg/L	1	28/11/12	6/12/12	-	-	-	1400
Conductivity	µs/cm	1	28/11/12	6/12/12	-	-	-	6250
Lead	mg/L	1	28/11/12	6/12/12	-	-	-	0.002
Magnesium	mg/L	1	28/11/12	6/12/12	-	-	-	222
Nitrate	mg/L	1	28/11/12	6/12/12	-	-	-	12.5
Potassium	mg/L	1	28/11/12	6/12/12	-	-	-	64
Sodium	mg/L	1	28/11/12	6/12/12	-	-	-	734
Standing Water Level	m	1	28/11/12	6/12/12	-	-	-	1.03
Sulphate	mg/L	1	28/11/12	6/12/12	-	-	-	264
pH	pH	1	28/11/12	6/12/12	-	-	-	7.50

Table 3 – Monitoring (Quarterly Noise – Limits Apply)

EPL ID	Date	Start Time	Measurement Period	Measured levels – All sources – dB(A)		Limit(s)	Weather	Observations	(Potential) Non-compliance /breach
				L <sub>A1, 1</sub> Minute	L <sub>Aeq, 15</sub> Minute				
N1	-	-	-		-	Day - 38	-	No monitoring this month	-
	-	-	-		-	Evening - 37	-	No monitoring this month	-
	-	-	-		-	Night - 35	-	No monitoring this month	-
	-	-	-	-		Night - 45	-	No monitoring this month	-

**WHITEHAVEN CHPP – MONTHLY MONITORING SUMMARY**

Figure 1 – EPL 3637 Monitoring Locations







## WHITEHAVEN CHPP – MONTHLY MONITORING SUMMARY

### Site Information

EPL No: 3637

EPA Website Link: <http://www.environment.nsw.gov.au/prpoeoapp/ViewPOEOLicence.aspx?DOCID=29173&SYSUID=1&LICID=3637>

Licensee: Whitehaven Coal Mining Limited

Licensee Address: Boggabri Road, Gunnedah NSW 2380

EPL Monitoring Points: See Figure 1 below

Sampling Period: December 2012

Publication Date: 11<sup>th</sup> January 2013

Table 1 - No Pollutant Limits Apply

EPL ID	Pollutant	Units of Measure	Monitoring Frequency	No. of Measurements for the Month	Date Sampled	Date Obtained	Min Value	Mean Value	Median Value	Max or Only Value
1	Solid Particles	g/m <sup>2</sup> /month	Continuous	1	21/12/12	3/1/13	-	-	-	1.8
2	Solid Particles	g/m <sup>2</sup> /month	Continuous	1	21/12/12	3/1/13	-	-	-	1.9
3	Solid Particles	g/m <sup>2</sup> /month	Continuous	1	21/12/12	3/1/13	-	-	-	2.3
4	Solid Particles	g/m <sup>2</sup> /month	Continuous	1	21/12/12	3/1/13	-	-	-	2.8
5	Solid Particles	g/m <sup>2</sup> /month	Continuous	1	21/12/12	3/1/13	-	-	-	4.9
	PM <sub>10</sub>	µg/m <sup>3</sup>	Every 6 days	5	Various	10/01/13	1.0	10.64	10.8	16.2
6	Conductivity	ms/cm	Each overflow event	0	-	-	-	-	-	-
	Oil and Grease	mg/L		0	-	-	-	-	-	-
	Total Organic Carbon	mg/L		0	-	-	-	-	-	-
	Total Suspended Solids	mg/L		0	-	-	-	-	-	-
	pH	pH		0	-	-	-	-	-	-
7	Conductivity	ms/cm	Quarterly	0	-	-	-	-	-	-
	Oil and Grease	mg/L		0	-	-	-	-	-	-
	Total Organic Carbon	mg/L		0	-	-	-	-	-	-
	Total Suspended Solids	mg/L		0	-	-	-	-	-	-
	pH	pH		0	-	-	-	-	-	-





**WHITEHAVEN CHPP – MONTHLY MONITORING SUMMARY**

Table 2 – Monitoring (Quarterly – No Limits apply)

EPL ID	Pollutant	Units of Measure	Monitoring Frequency	No. of Samples for the Period	Date Sampled	Date Obtained	Min Value	Mean Value	Median Value	Max or Only Value
8	Ammonia	mg/L	Quarterly	0	-	-	-	-	-	-
	Bicarbonate	mg/L		0	-	-	-	-	-	-
	Calcium	mg/L		0	-	-	-	-	-	-
	Chloride	mg/L		0	-	-	-	-	-	-
	Conductivity	µs/cm		0	-	-	-	-	-	-
	Lead	mg/L		0	-	-	-	-	-	-
	Magnesium	mg/L		0	-	-	-	-	-	-
	Nitrate	mg/L		0	-	-	-	-	-	-
	Potassium	mg/L		0	-	-	-	-	-	-
	Sodium	mg/L		0	-	-	-	-	-	-
	Standing Water Level	m		0	-	-	-	-	-	-
	Sulphate	mg/L		0	-	-	-	-	-	-
pH	pH	0	-	-	-	-	-	-		
9	Ammonia	mg/L	Quarterly	0	-	-	-	-	-	-
	Bicarbonate	mg/L		0	-	-	-	-	-	-
	Calcium	mg/L		0	-	-	-	-	-	-
	Chloride	mg/L		0	-	-	-	-	-	-
	Conductivity	µs/cm		0	-	-	-	-	-	-
	Lead	mg/L		0	-	-	-	-	-	-
	Magnesium	mg/L		0	-	-	-	-	-	-
	Nitrate	mg/L		0	-	-	-	-	-	-
	Potassium	mg/L		0	-	-	-	-	-	-
	Sodium	mg/L		0	-	-	-	-	-	-
	Standing Water Level	m		0	-	-	-	-	-	-
	Sulphate	mg/L		0	-	-	-	-	-	-
pH	pH	0	-	-	-	-	-	-		
10	Ammonia	mg/L	Quarterly	0	-	-	-	-	-	-



## WHITEHAVEN CHPP – MONTHLY MONITORING SUMMARY

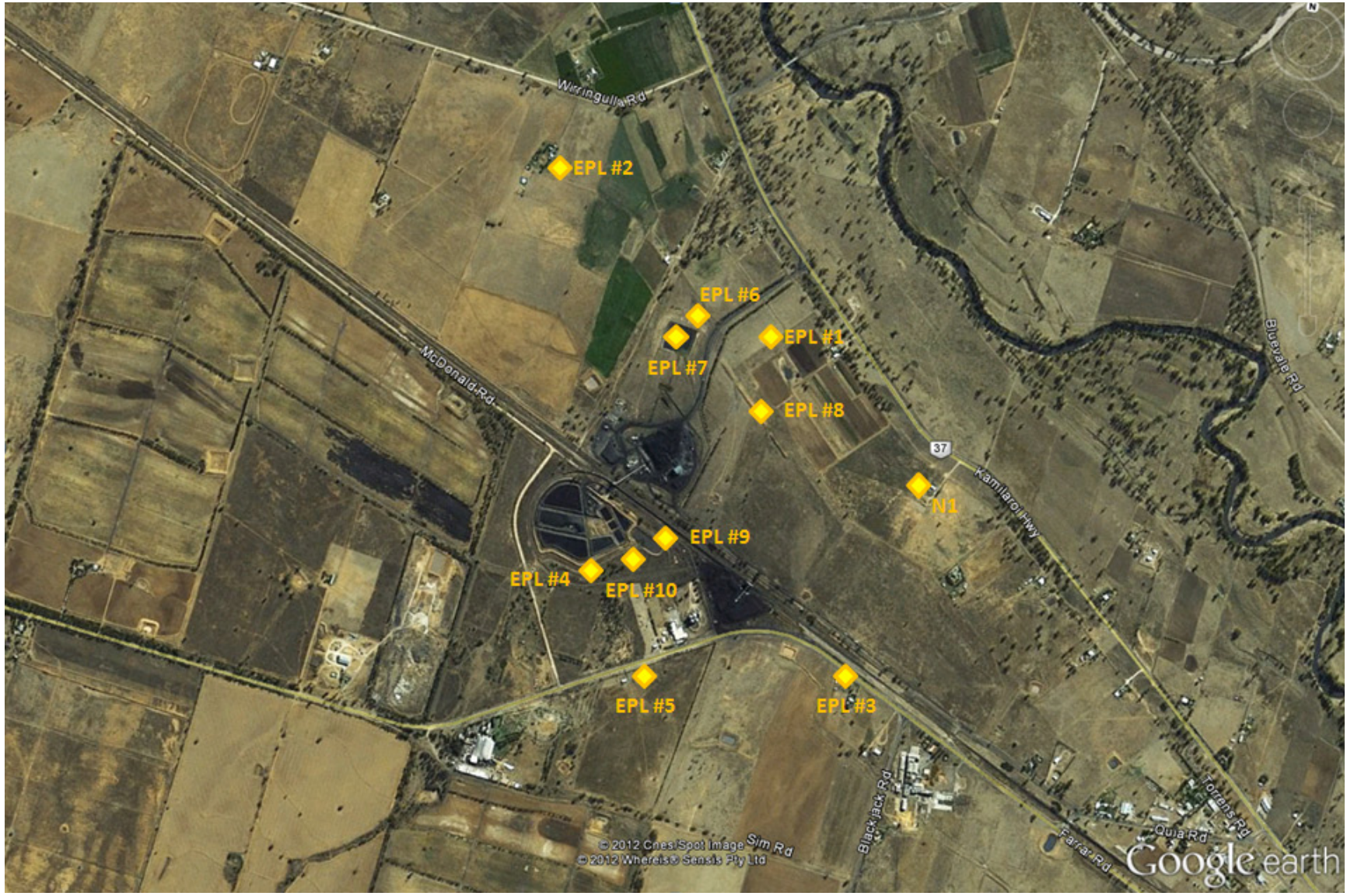
Bicarbonate	mg/L	0	-	-	-	-	-	-
Calcium	mg/L	0	-	-	-	-	-	-
Chloride	mg/L	0	-	-	-	-	-	-
Conductivity	µs/cm	0	-	-	-	-	-	-
Lead	mg/L	0	-	-	-	-	-	-
Magnesium	mg/L	0	-	-	-	-	-	-
Nitrate	mg/L	0	-	-	-	-	-	-
Potassium	mg/L	0	-	-	-	-	-	-
Sodium	mg/L	0	-	-	-	-	-	-
Standing Water Level	m	0	-	-	-	-	-	-
Sulphate	mg/L	0	-	-	-	-	-	-
pH	pH	0	-	-	-	-	-	-

Table 3 – Monitoring (Quarterly Noise – Limits Apply)

EPL ID	Date	Start Time	Measurement Period	Measured levels – All sources – dB(A)		Limit(s)	Weather (wind speed/°)	Observations	(Potential) Non-compliance /breach
				L <sub>A1, 1</sub> Minute	L <sub>Aeq, 15</sub> Minute				
N1	14/12/12	11:07am	15 minutes		58	Day - 38	1.8m/s, 249	Traffic (58), birds & insects (45), CHPP (30)	No
	13/12/12	6:17pm	15 minutes		52	Evening - 37	2.6m/s, 133	Traffic (52), birds (35), CHPP inaudible	No
	14/12/12	12:53am	15 minutes		55	Night - 35	2.0m/s, 64	Traffic (55), insects (40), CHPP barely audible	No
	14/12/12	12:53am	15 minutes	55		Night - 45	2.0m/s, 64	CHPP barely audible	No

**WHITEHAVEN CHPP – MONTHLY MONITORING SUMMARY**

Figure 1 – EPL 3637 Monitoring Locations





**WHITEHAVEN COAL**

**WHITEHAVEN CHPP – MONTHLY MONITORING SUMMARY  
CORRECTION LOG**

**Site Information**

**EPL No:** 3637

**EPA Website Link:** <http://www.environment.nsw.gov.au/prpoeoapp/ViewPOEOLicence.aspx?DOCID=29173&SYSUID=1&LICID=3637>

**Licensee:** Whitehaven Coal Mining Limited

**Licensee Address:** Boggabri Road, Gunnedah NSW 2380

**EPL Monitoring Points:** See Figure 1 below

<b>Sample Point</b>	<b>Sample Date</b>	<b>Original Data</b>	<b>Corrected Data</b>	<b>Date Corrected</b>	<b>Date Originally Published</b>	<b>Reason</b>
5	18/4/12	1.0	1.2	16/8/12	22/6/12	Reporting error
5	18/5/12	1.4	1.6	16/8/12	22/6/12	Reporting error
5	19/6/12	3.1	1.2	16/8/12	24/7/12	Reporting error





# WHITEHAVEN COAL

## WHITEHAVEN CHPP – MONTHLY MONITORING SUMMARY CORRECTION LOG

Figure 1 – EPL 3637 Monitoring Locations

