

Vickery Extension Project CCC

Date: Wednesday 11 May 2022, 12 – 1:20pm

Venue: Gunnedah Town Boardroom

Attendees	
Community members Barry Thomson Narrabri Council Michelle Henry – Strategic Planner Cr Catherine Redding Gunnedah Shire Council Cr Rob Hooke Wade Hudson – Senior Development Officer	Whitehaven Coal Darren Swain – Community Relations Manager Tony Dwyer – Group Manager, Approvals and Environment Mark Stevens – Executive General Manager Olivia Hulbert – Environmental Officer Rehabilitation & Closed Mines Grant McIlveen Independent Chair Professor Roberta Ryan Minute taker Georgia Peters
Apologies Mark Stevens is available for the first hour of the meeting only Keith Blanch Steven O'Donoghue	

Item	Description	Action
1	Welcome and introductions	
	RR introduces everyone present and introduces GP as the minute taker.	
2	Minutes and actions	
	No additional items are added to today's agenda.	
3	Update on the project – DS, TD & OH	
	<p>DS, TD and OH provide an update on the project through a presentation. Some key points are noted below, the full presentation will be attached to the minutes.</p> <p>MS says that the project is at the stage before development. Rail is under design while the preconstruction works have started with geotechnical works. The team have been mobilised for two weeks.</p> <p>There has been work on cultural heritage and biodiversity and these have been fenced off in certain</p>	DS to provide the presentations for the minutes.

	<p>areas to prevent people from entering. There is 30km of fencing completed to demarcate those areas.</p> <p>MS continues that exploration started on 3rd April and will take approximately 16 weeks.</p> <p>RH notes that the rail corridor is in early design phase and asks if there will be consultation with landowners given that the rail corridor is designed to go through controversial areas.</p> <p>MS says that once the development progresses there will be consultation with landowners. He notes that a landowner reached out a couple of weeks ago who they offered to meet. They are more than happy to consult with them.</p> <p>MS speaks to the design status with maps and illustrations modelling the projected appearance.</p> <p>GM asks about the proximity of this to the river.</p> <p>MS indicates where the trucks will come from on the pit on the 3D Mine Infrastructure Area map – they will come through the roadway on the top of slide 14. The tire bay is also shown on slide 14 where the trucks are depicted.</p> <p>GM asks if this is on the eastern side of the washery.</p> <p>MS confirms that it is.</p> <p>TD speaks to the secondary approval status. The majority of the plans have been approved with three outstanding:</p> <ul style="list-style-type: none"> • Traffic management plan • Biodiversity plan • Water management plan <p>For the biodiversity plan and traffic management plan, they only need to address minor comments from the Department. At this stage the water management plan requires the most work. They are at the review stage for this document.</p> <p>All three of these plans are required prior to construction, which is some way in the future. They</p>	
--	--	--

	<p>are sorting out the documentation approval ahead of time.</p> <p>MS notes that the commencement of development triggers the next payment cycle.</p> <p>RR asks about the SIA and about water management issues raised.</p> <p>TD says that the project approval stipulates what needs to go into the water management plan. Some of the key items that are required include:</p> <ul style="list-style-type: none"> • A description of the water management infrastructure • Triggered Action Response Plan (TARP) levels • How much a dam can fill before they have to empty it. <p>TD speaks to reporting and compliance. They underwent and submitted the Exploration Mining Plan to the NSW Resources Regulator in November. They have since commenced the works.</p> <p>They received a non-compliance, and they got a penalty. This was about not completing the rehabilitation of historical boreholes. They have to fill these holes with grout and remove the surface materials around the holes. The exploration team had done everything that was required other than grout these holes</p> <p>CR asks how far back historical holes are?</p> <p>TD says that whether Whitehaven drill the holes or not, they are responsible. It goes back to how long there has been exploration activities in the area from previous Proponents. He notes that it is difficult to find these holes.</p> <p>MS says that the holes are not open, they are capped.</p> <p>TD says that it is important to fill them to ensure there isn't ongoing interaction between different levels in the ground.</p> <p>TD speaks to air quality and explains the use of dust deposition bottles. It is a monitoring method which is</p>	
--	---	--

	<p>being phased out and replaced with more accurate monitoring. The annual average for various sites is included on slide 17. A limitation of using dust deposition bottles is that it's very coarse and you cannot ascertain the source of the dust. This does not apply in this case though.</p> <p>TD continues about the groundwater monitoring network. Intense rain events have caused problems. Some of the river sites shown on slide 19 were not sampled because of safety concerns.</p> <p>CR asks how often they do these sampling events?</p> <p>OH and TD reply that they do these when there has been a big amount of rainfall i.e. 38.4 mm of rain in 5 days.</p> <p>DS discusses donations to the community including to childcare centers. There weren't any health-related donations.</p> <p>DS says that SMEC is developing the Vickery Construction Social Impact Management Plan (SIMP) and they would be seeking feedback from the CCC on this</p> <p>DS says that Kurrumbede is now listed on the State Heritage Register. Whitehaven has always committed to maintaining this site. There will be a process where they will need to consider the State Heritage Register Listing requirements which make clear the direction on how to maintain it. The builder is lined up and has completed the heritage induction. Maintenance works are ready, they just need people to do it. It can be difficult to get tradies.</p> <p>The next Kurrumbede Open Day is possibly Saturday the 3rd September. This is tentative at the moment.</p> <p>GM asks if this new Heritage status will make development conditions stricter?</p> <p>DS says it won't change anything since they had to meet certain requirements anyway in accordance with the Vickery Project Approval. By the next CCC</p>	
--	---	--

	<p>there will be a curtilage area noted by Heritage Council.</p> <p>DS also notes that Heritage NSW has proposed a curtilage area however at this stage haven't seen the final version. This curtilage plan doesn't exist yet however the area is expected to sit outside of project approval area.</p> <p>TD says that the importance of the curtilage is that it determines the area that the requirements of the listing apply.</p> <p>TD provides an update regarding Namoi River Bridge. Whitehaven took an action to assist in determining the ownership/responsibility of a historic bridge over the river. Since the last meeting they made an application to the Council to obtain historical approval documentation and Council has provided this. From this documentation, Whitehaven has found that the condition requiring removal and rehabilitation of the bridge would have been triggered in October 2020.</p> <p>GM asks if the Planning Department could find the original permission for the bridge to be built?</p> <p>TD says that it would have originally been approved through local government with a DA. This DA would have had an equivalent requirement in it, which was amended in 2001 to have a requirement to move into the Authority. It was issued to a private individual who is responsible for this.</p> <p>MH clarifies that this responsibility doesn't transfer with the land?</p> <p>MS confirms that this responsibility does not transfer with the land.</p> <p>GM asks MS and RH what happens if this individual has just walked away from the bridge.</p> <p>TD says the next step is the State Government following up with that individual.</p> <p>RR suggests that the regulatory authority is the Department of Planning.</p>	
--	---	--

	<p>TD says that the current entity will be the modern version of the body that issued it.</p> <p>TD says that they can share their information to DPE to follow up with the relevant authority to then reach out to the private individual.</p> <p>RR asks for questions.</p> <p>Mark leaves the meeting.</p>	
4	Update from Whitehaven: company plans	
	<p>DS says they have approval from State and Federal governments and are waiting on Board approval. This work will be informed by the Geotech work currently underway, which will inform the design work. There is a process that is about 12 months away.</p> <p>TD says that they will complete a Definitive Feasibility Study (DFS).</p>	
5	CCC matters	
	<p>Additional community members are to be sourced for this CCC.</p>	<p>RR to arrange a process for sourcing additional community members for the CCC once the company has decided whether to progress</p>
6	AOB	
	<p>RR asks for more questions or matters arising.</p> <p>GM flags that residents are asking about the VPA offer to the Shire. He notes that \$850,000 was offered for the construction of the retirement village and \$750,000 was offered for the showground. He asks CR if those funds are still there.</p> <p>CR confirms that it is still there.</p> <p>GM asks if they are still committed to providing that money? In town they were concerned that they were not going to receive that money.</p> <p>CR notes that those funds will not come in all at once.</p> <p>GM asks if Council has a timeframe for when this money comes in.</p>	

	<p>CR says that once the funds come into Council for a given project, this triggers the beginning of discussions with various groups. However, the timing of when those funds come in is something they do not know.</p> <p>GM asks whether, at the commencement of mining, the \$3.2 million will be there?</p> <p>CR says that it comes over a matter of years.</p> <p>DS adds that this hasn't been signed into stone.</p> <p>TD says they have determined the conditions as described.</p> <p>GM asks if they have a guarantee from the Shire that they will stay in Boggabri? CR says yes.</p> <p>RH says that he has received inquiries from a local committee about the likelihood of fly-in fly-out programs.</p> <p>DS says that all options will need to be considered however continue to look for local employees.</p> <p>RH says that Gunnedah has housing that is being upgraded by December that will need to be accounted for if there is fly-in fly-out programs.</p> <p>CR asks if there has been any talk of using autonomous vehicles at Vickery?</p> <p>TS says that it has been considered. They are not sure of the exact timeframe for this program or when this decision will be made. If it is successful, it is something that business will consider.</p> <p>The next meeting will be organized in line with major milestones.</p>	
7	Next meeting	
	TBD – approximately 3 months.	

Vickery – Canyon Coal Mine

Community Consultative Committee Meeting

May 2022



WHITEHAVEN COAL

Canyon Coal Mine

Environmental Monitoring

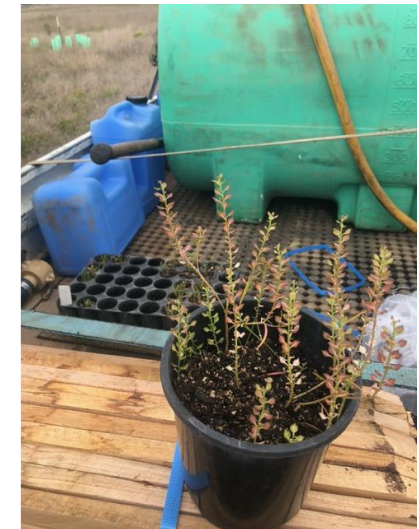
- Biodiversity
- Air quality
- Groundwater
- Surface water



WHITEHAVEN COAL

Biodiversity Management

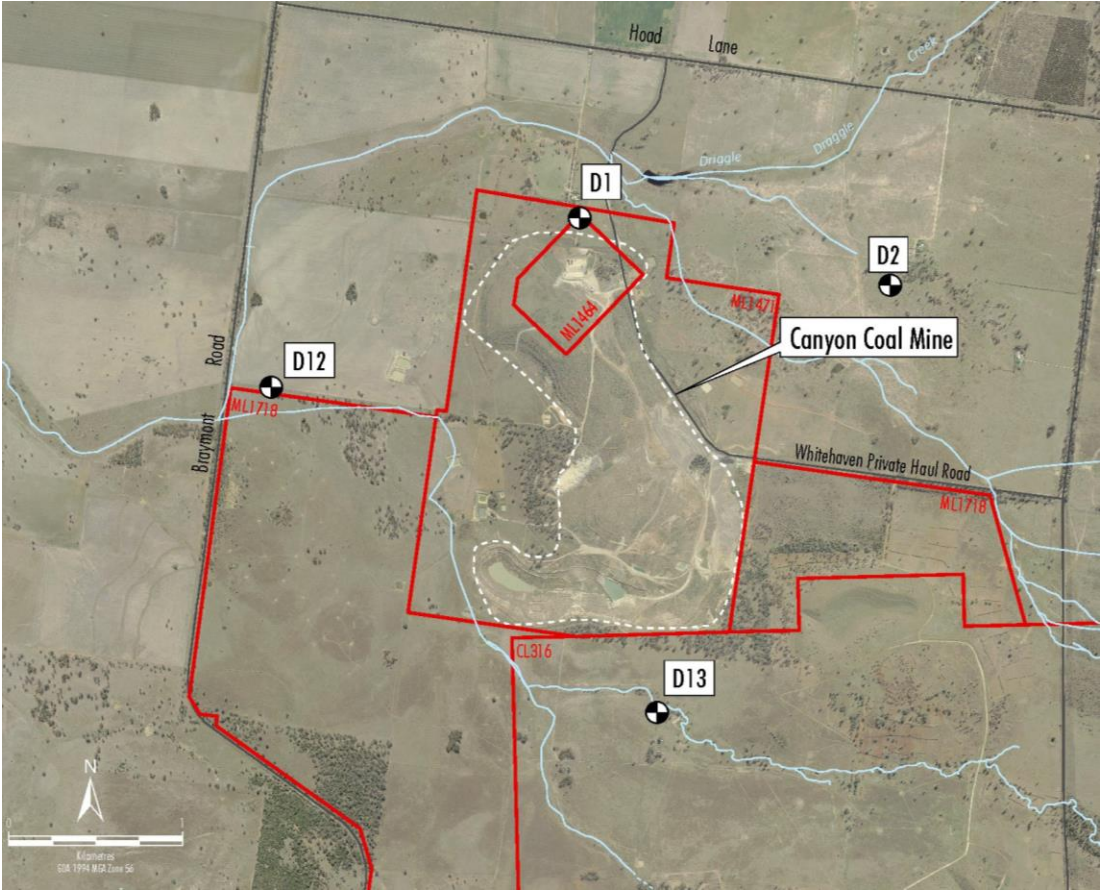
- Winged Peppergrass Threatened Flora Management – A total of 216 seedlings grown from seed collected onsite were planted plus 1,000 seeds were direct seeded all within the Protection Area in September 2021 as part of the Translocation & Restoration Program.
- Pest Animal Monitoring – FY22 Q2 (August to November 2021) indicates that foxes and pigs were in medium to high abundance.
- Pest Animal Management – FY22 Q2 (December 2021) resulted in 58 Foxes baited and 5 Feral Pig trapped on associated Offset properties.
- Pest Animal Monitoring – FY22 Q3 (December 2021 to February 2022) indicates that foxes and pigs were in medium to high abundance.
- Pest Animal Management – FY22 Q3 (March 2022) resulted in 77 Foxes baited and 24 Feral Pig trapped on associated Offset properties.



Air Quality

Depositional Dust Monitoring - Project Approval and Air Quality Management Plan

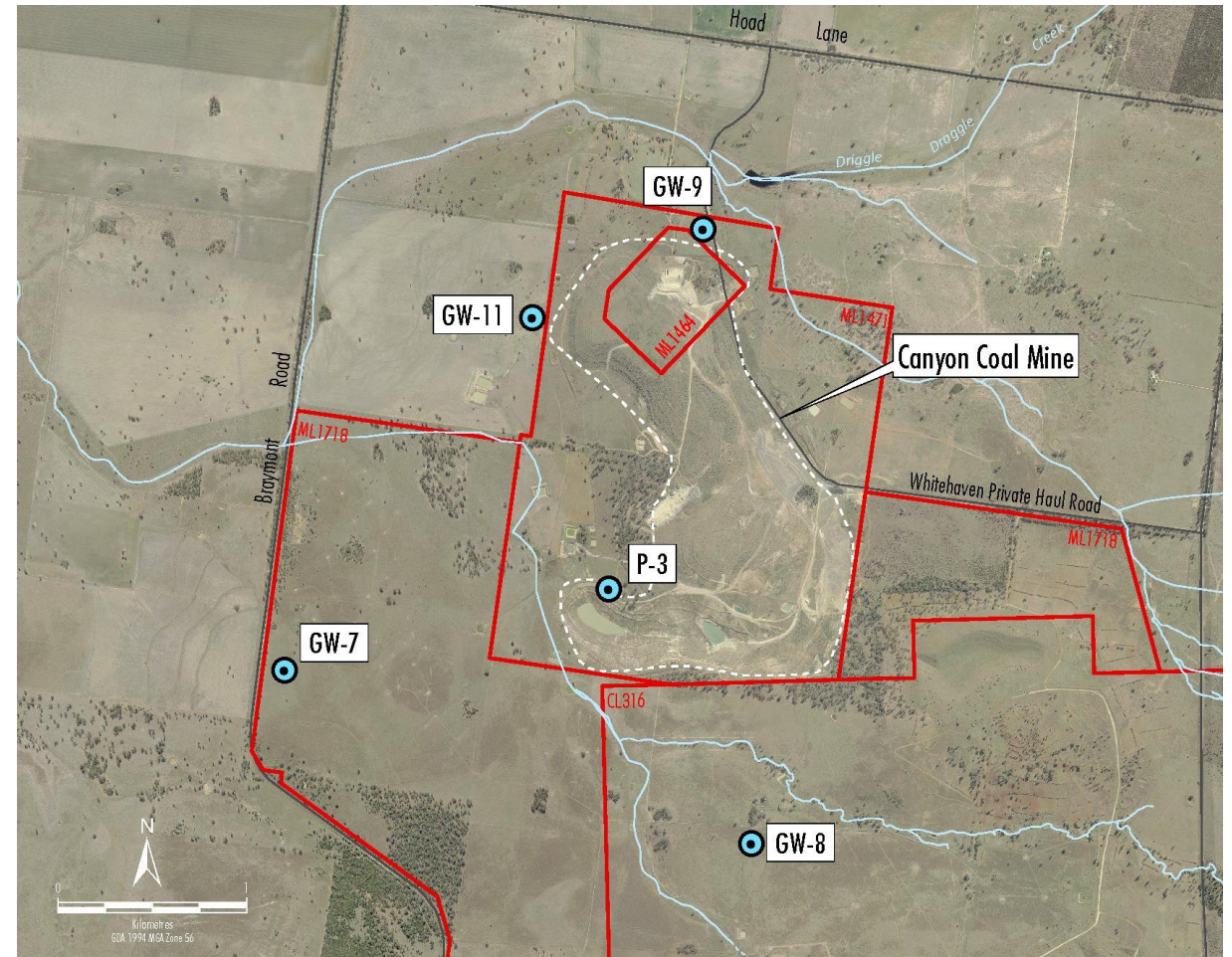
Depositional Dust (12-month insoluble matter results in g/m2/month)		
Site	Annual Average	Guideline
D1	1.18	Annual average to be below 4
D2	1.39	
D12	1.57	
D13	3.71	



Groundwater

Monitoring as per Project Approval and Water Management Plan

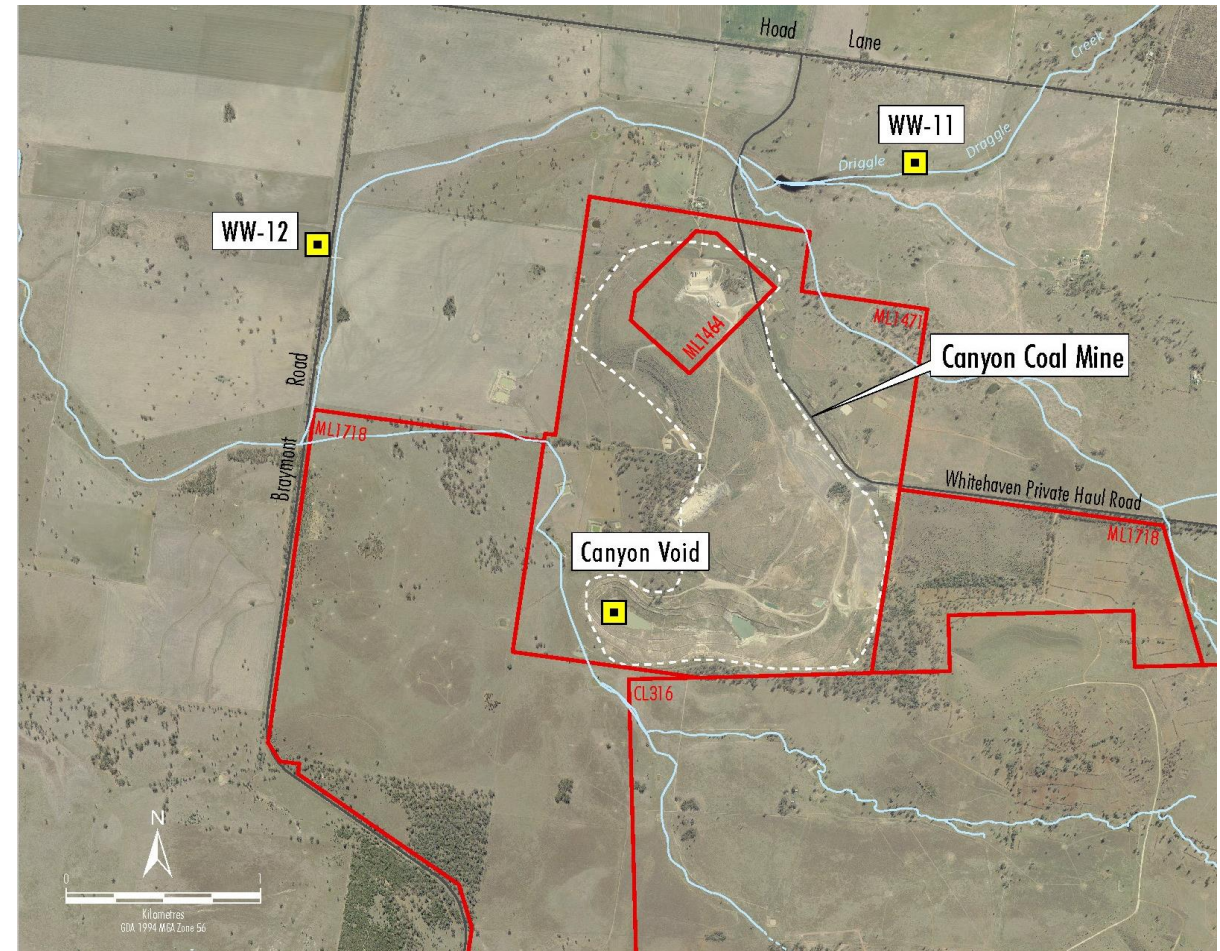
- All sites standing water level monitored approximately every 6 months.
- Sites GW-11 and P-3 have water quality assessed every six months to review temporal trends. The results remain generally consistent in quality since the last CCC Meeting.
- There has been an increase in ground water level in response to rainfall.



Surface Water

Monitoring as per Project Approval and Water Management Plan

- On average, the site received 110.2 mm of rain each month since the last CCC meeting. The highest rainfall was in November with 246.6 mm at the site weather station.
- No monitoring was undertaken as no discharge occurred.
- Canyon Void water levels and quality are monitored on a 6 monthly basis. Water level and quality is generally consistent since the last CCC Meeting.
- pH, TSS, Oil & grease results consistent, and EC decreased.



Reporting and Compliance Summary

- The Independent Environmental Audit (IEA) was completed in 2022. The IEA is undertaken every three (3) years.
- The IEA Report and associated response to the audit recommendations are available on the Whitehaven Coal website, or via hard copy on request.
- The Annual Review report for calendar year 2021 was submitted to relevant regulatory agencies. A copy is available on the Whitehaven Coal website, or via hard copy on request.

Complaints


No complaints received


<https://whitehavencoal.com.au/our-business/our-assets/canyon-mine/>

Contacts

Canyon Mine

Contact us via our community hotline or email for more information, to provide feedback or to lodge a complaint.

 1800 WHAVEN (1800 942 836)

 CANYONPROJECT@WHITEHAVENCOAL.COM.AU

Vickery Coal Mine

Design status

Secondary Approval Status

Environmental Monitoring

- Biodiversity
- Air quality
- Groundwater
- Surface water

Kurrumbede Update

Namoi River Bridge



WHITEHAVEN COAL

Design Status

Approval Conditions:

- Notification provided to DPE 31/03 that the project has 'commenced of development'.

Update on CHPP:

- Coal Preparation Plant is fully engineered.
- Undertaking Feasibility Study Engineering for the materials handling system (crushing, conveyors, bins and transfers).

Update on MIA:

- Consultants are progressing the engineering for the Mine Infrastructure Area (MIA).

Update on Rail:

- Consultants are developing the design for the Rail.
- Ongoing works with ARTC for Mainline connection and Signaling design.
- Ongoing works with TfNSW for Kamilaroi Highway bridge works.

Design Status

Geotechnical investigation works:

- Started on 28th April 2022 and will take approximately 10 weeks.
- Pre geotech works include: Ecology & Culture Heritage walk downs; Survey / Fencing works;
- Scope of geotech works includes approximately 200 test locations comprising of test pits, boreholes and CPT's (Cone Penetration Tests).
- As of 1st May 2022 98 test pits, 12 CPT's and 5 boreholes have been completed and reinstated.

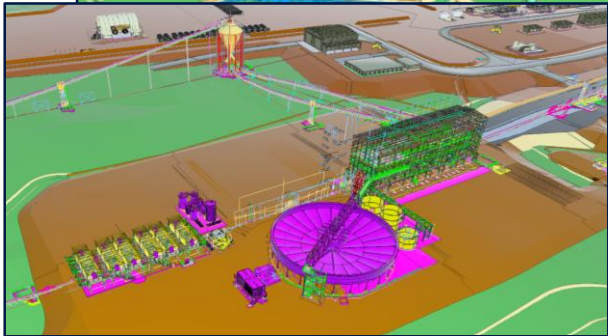


Exploration Drilling Program works:

- Started on 3rd April 2022 and will take approximately 16 weeks.
- Scope of works includes approximately 51 boreholes ranging in depth from 90m to 150m.
- As of 1st May 2022 8 holes have been drilled.



Design Status



Design Status

3D Model – Coal Handling and Processing Plant (CHPP)



Design Status

3D Model – Mine Infrastructure Area (MIA)



Secondary Approval Status

Update on Approvals – Specifically Named Management Plans:

Environmental Management Plan		Status	Approved prior to	
Environmental Management Strategy	EMS	Approved	Construction	
Blast Management Plan	BIMP	Approved	Any blasting	
Waste Management Plan	WMP	Approved	Construction	
Aboriginal Cultural Heritage Management Plan	ACHMP	Approved	Construction	
Historic Heritage Management Plan	HHMP	Approved	Construction	
Koala Management Plan	KPoM	Approved	Construction	
Noise Management Plan	NMP	Approved	Construction	
Bushfire Management Plan	BuMP	Approved	Operations	
Traffic Management Plan	TMP	Feedback from TfNSW required by DPE received.	Construction	
Biodiversity Management Plan	BoMP	Addressing further DPE minor comment	Construction	
Air Quality & Green House Gases Management Plan	AQGGMP	Approved	Construction	
Water Management Plan	WMP	Review commenced.	Construction	

Reporting and Compliance Summary

- The Annual Review report for calendar year 2021 was submitted to DPE and other regulatory agencies as required by the Project Approval (SSD 5000). A copy is available on the Whitehaven Coal website, or via hard copy on request.
- An Exploration Mining Operation Plan (EMOP), required under CL316, was submitted to the NSW Resources Regulator in November 2021 and approved in January 2022 for exploration drilling activity.
- The Vickery Coal Mine received a penalty notice from the NSW Resources Regulator in Q1 of 2022 for incomplete rehabilitation of some historical bore holes. The VCM assisted the Resources Regulator in their review and have commenced rehabilitation of the outstanding boreholes.

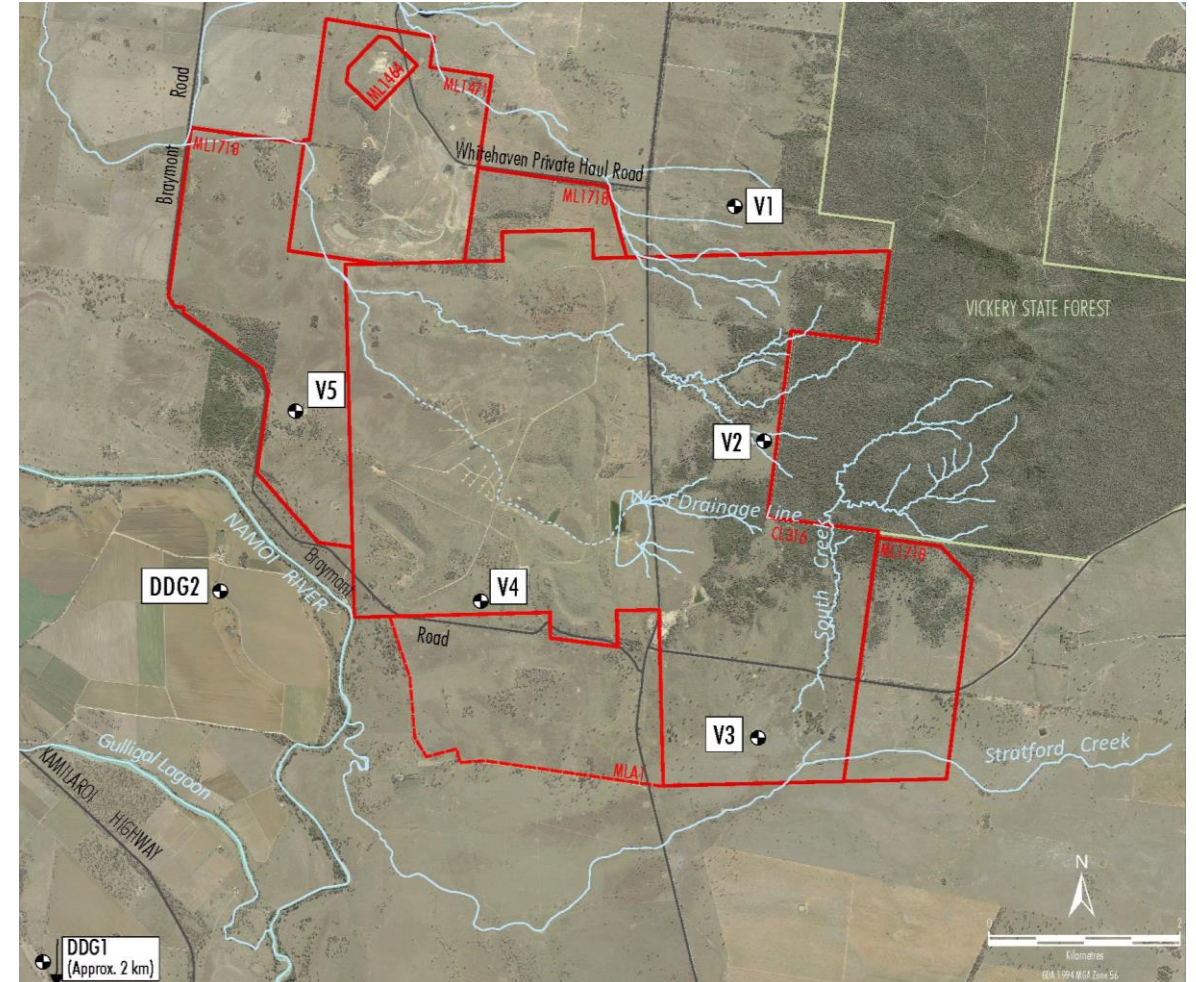
Air Quality

Depositional Dust monitoring as per Project Approval

Depositional Dust (12-month insoluble matter results in g/m2/month)		
Site	Annual Average	Guideline
DG1	3.39	Annual average to be below 4
DG2	1.36	
V1	4.21	
V2	0.99	
V3	2.36	
V4	0.96	
V5	1.76	

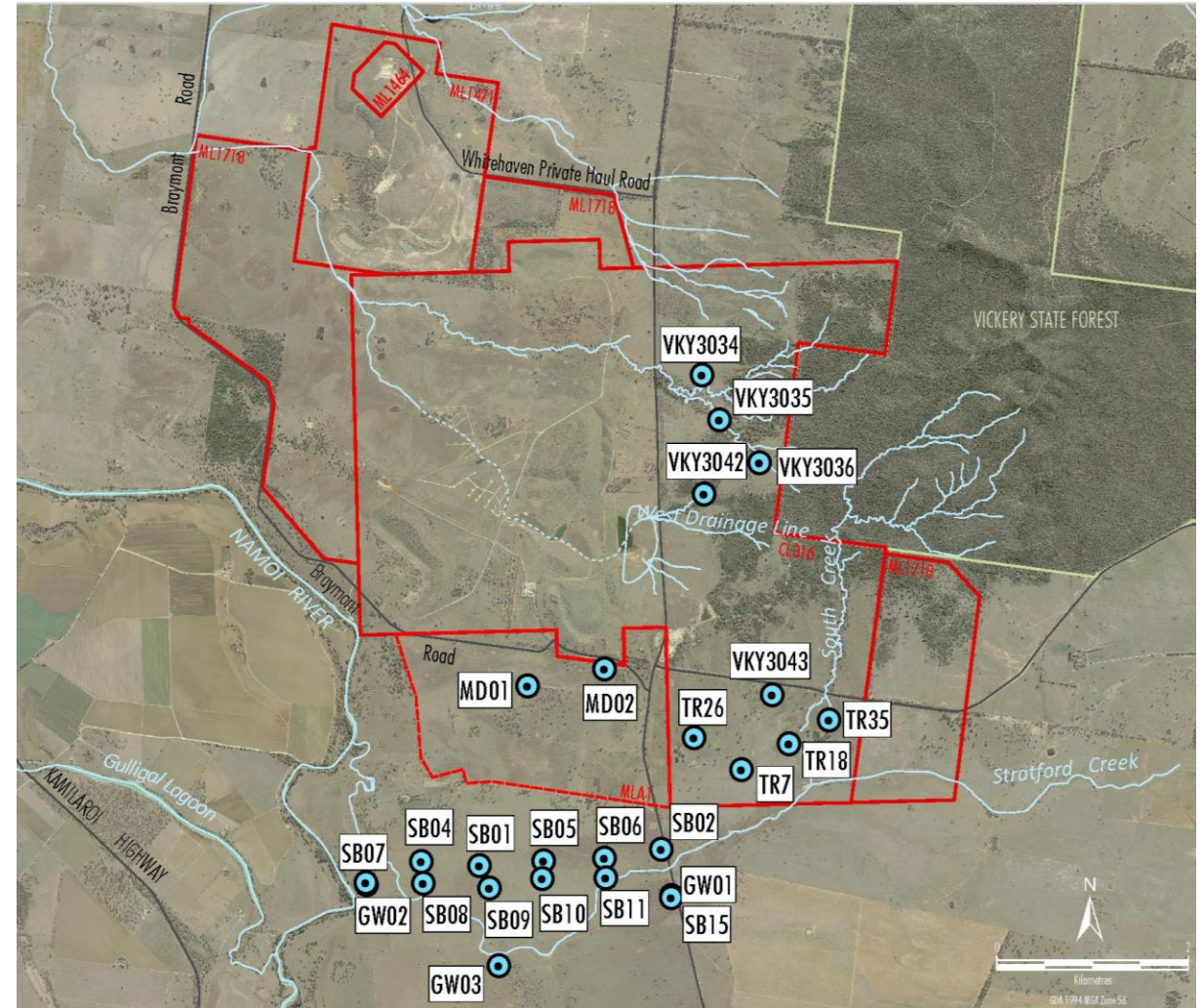
Dust emissions are not a result of the development.

- DG1 results affected by slashing and cropping around the gauge.
- Located on Whitehaven owned property.



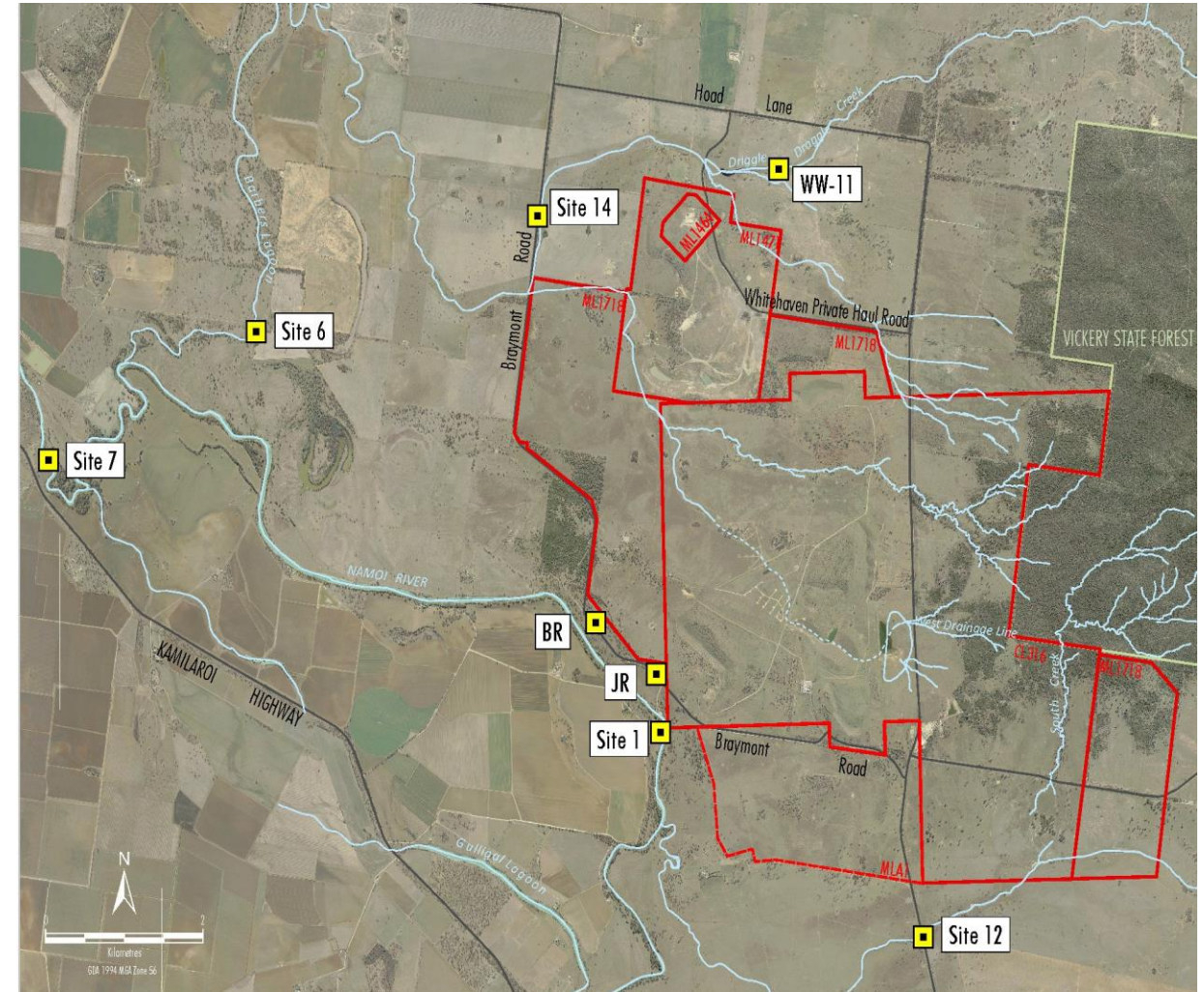
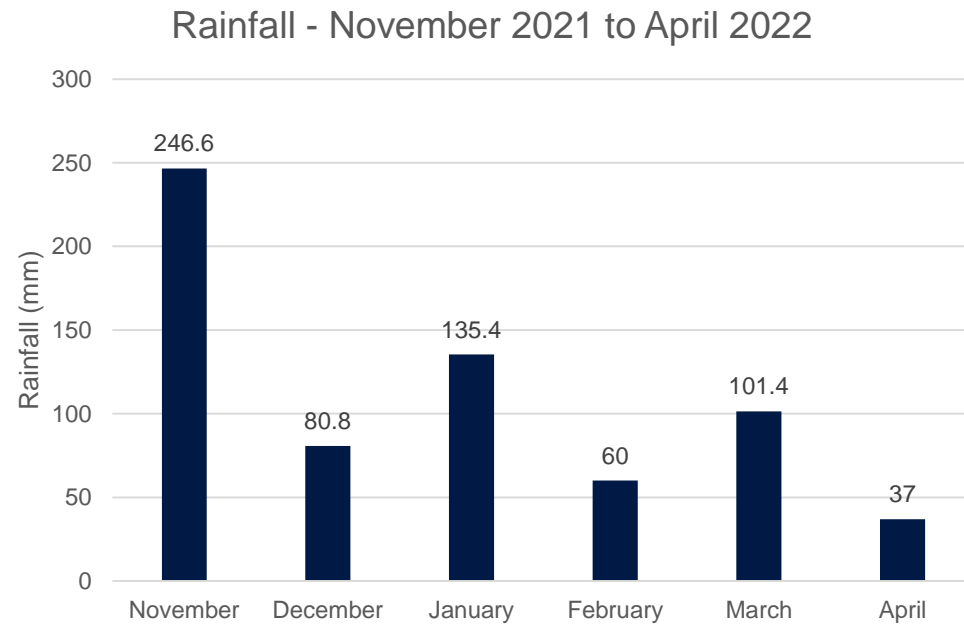
Groundwater

- Groundwater levels at 25 standpipe locations were recorded in January 2022 and again in April 2022.
- Results showed generally consistent levels since the last CCC Meeting.



Surface Water

- Surface water flow occurred since the last CCC meeting through a number of rain events.
- Water sampling was not undertaken in the Namoi River due to restricted access during the flood.



Complaints


No complaints received. A local Landholder however was concerned environmental monitoring is not currently in place for the pre-construction geotech works for the Project. These works are minor in nature and short in duration and are separate to the Construction works which are more significant in nature and longer in duration and require formal monitoring in accordance with the approved Noise Management Plan.


<https://whitehavencoal.com.au/our-business/our-assets/vickery-extension-project/>

Contacts

Vickery Extension Project

Contact us via email or our community hotline for more information, to provide feedback or to lodge a complaint.

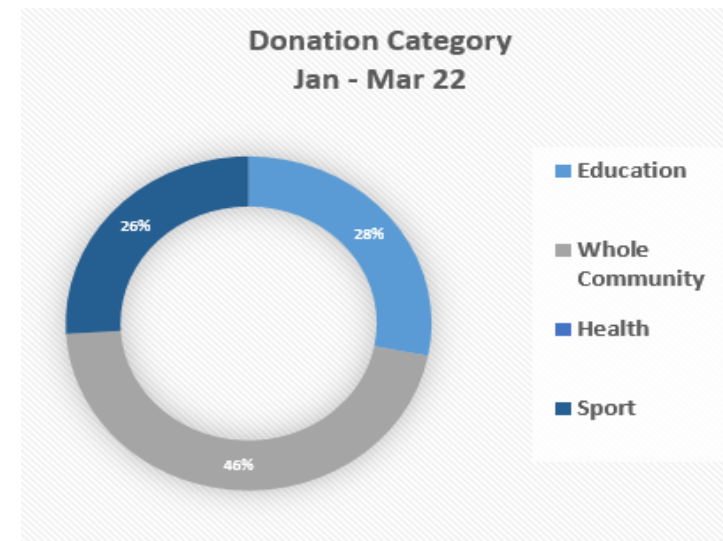
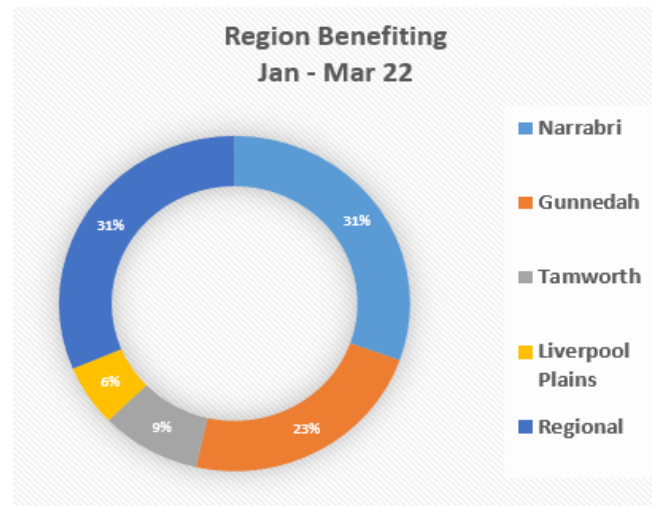
 1800 WHAVEN (1800 942 836)

 VICKERYFEEDBACK@WHITEHAVENCOAL.COM.AU

ALL CONTACTS →

Community

- Whitehaven continues to support the local Community with donations and sponsorships.
- More information on Sponsorships and Donations can be found at:
 - <https://whitehavencoal.com.au/sustainability/community/donations-sponsorships/>
- Donations for Jan – Mar 2022 almost \$198,000 spent in the local community.
- Highlights - over \$50,904 to Westpac Rescue Helicopter (matching Employee donations), \$10,000 to Country Education Foundation Namoi and \$6,500 to Nurruby Boggabri Community Childcare Centre & Preschool, \$6,000 to Boggabri Lions Club, \$5,000 to Currabubula Preschool etc.



Vickery Construction Social Impact Management Plan (SIMP)

- Vickery SIMP is required to be submitted to the Secretary within six months of commencement of development under consent SSD 7480 being triggered.
- SMEC have been engaged to compile the Vickery Construction SIMP document and will be engaging and looking for input and feedback from the Community, Councils and the Vickery CCC Members in its development over the next couple of months.

Kurrumbede

Kurrumbede SHR listing:

- On the 28 April 2022 the Minister for Environment and Heritage directed the listing of Kurrumbede Homestead Complex on the State Heritage Register. WHC were advised on the 6 May 2022 that the Kurrumbede Complex had been listed. No change to WHC's approach as the ongoing maintenance of Kurrumbede has been committed to previously.

https://gazette.legislation.nsw.gov.au/so/download.w3p?id=Gazette_2022_2022-196.pdf

A Heritage Induction as required by the Heritage Management Plan is in place and maintenance works have been scheduled.

The next Kurrumbede Open Day is expected later on in the year possibly 3 September.



Namoi River Bridge

Whitehaven made application to Council to obtain historic approval documentation.

Documentation indicates that:-

- Authority to operate and maintain the bridge was established with a private individual in 2001,
- A condition of the Authority was for the private individual to remove the bridge and rehabilitate the banks of the Namoi River upon cessation of the Authority,
- The Authority ceased in October 2020.



Thank you

www.whitehavencoal.com.au



WHITEHAVEN COAL